

 کریستان

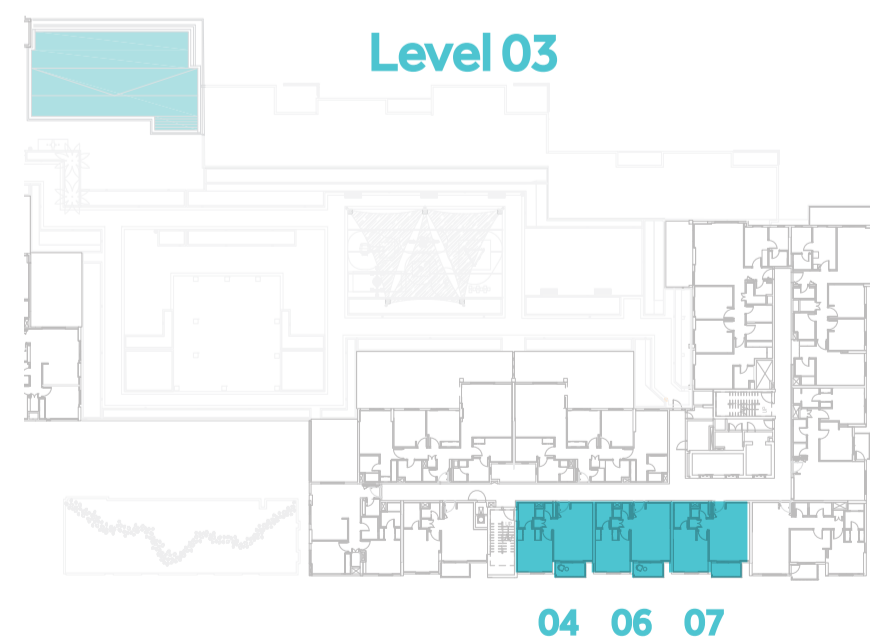
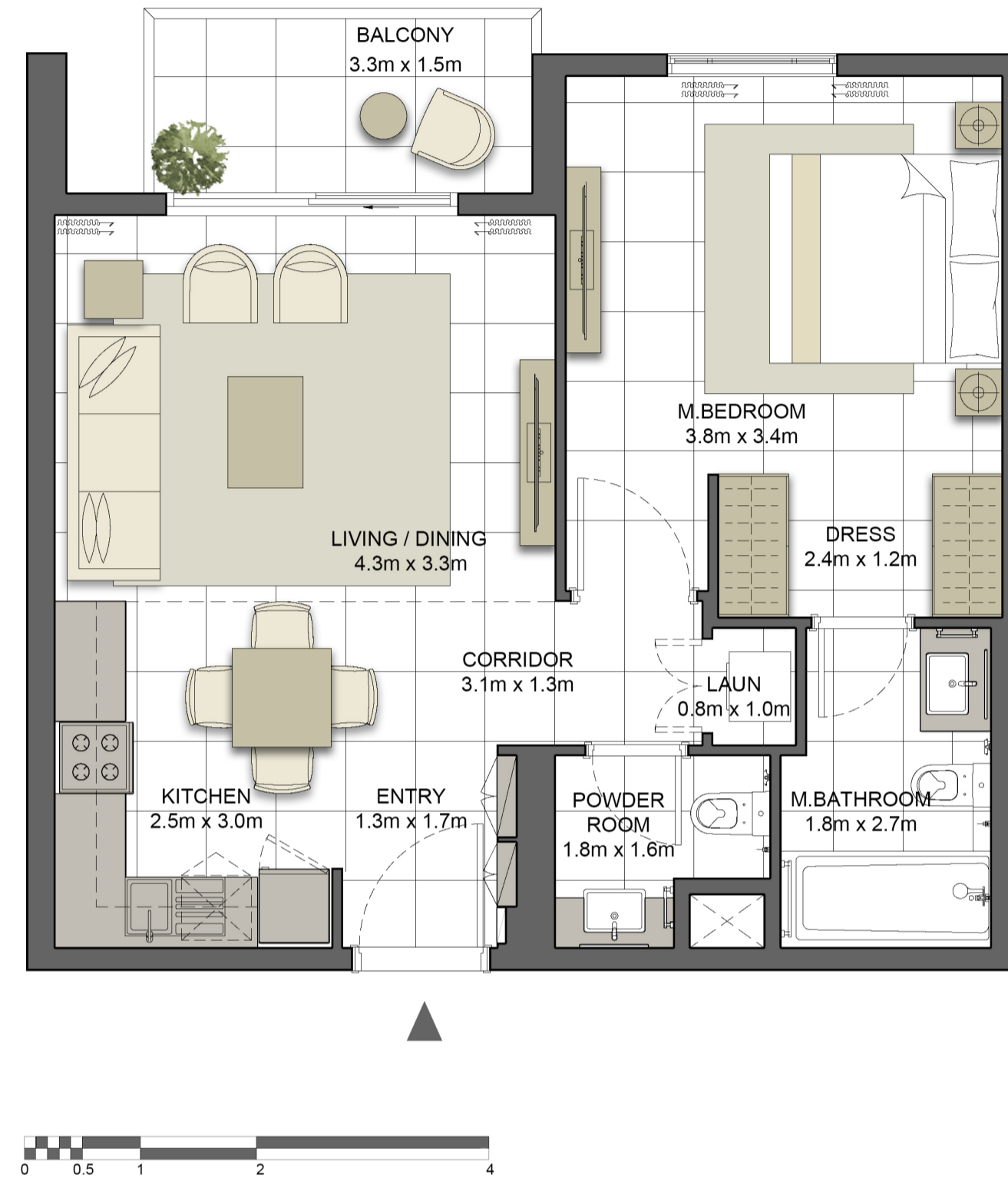
**CRYSTAL RESIDENCES**

**TOWER 2**

# کریستان

## CRYSTAL RESIDENCES TWO

BUILDING	CRYSTAL TWO
1BEDROOM	TYPE 1A-1
UNIT NO.	304, 306, 307, 404, 406, 407, 504, 506, 507, 604, 606, 607, 704, 706, 707, 804, 806, 807, 904, 906, 907, 1004, 1006, 1007, 1104, 1106, 1107, 1203, 1205, 1206
SUITE AREA	61.6 m <sup>2</sup> / 662.8 ft <sup>2</sup>
BALCONY AREA	4.8 m <sup>2</sup> / 51.2 ft <sup>2</sup>
TOTAL AREA	66.3 m <sup>2</sup> / 714.1 ft <sup>2</sup>



جزيرة مريم  
MARYAM ISLAND

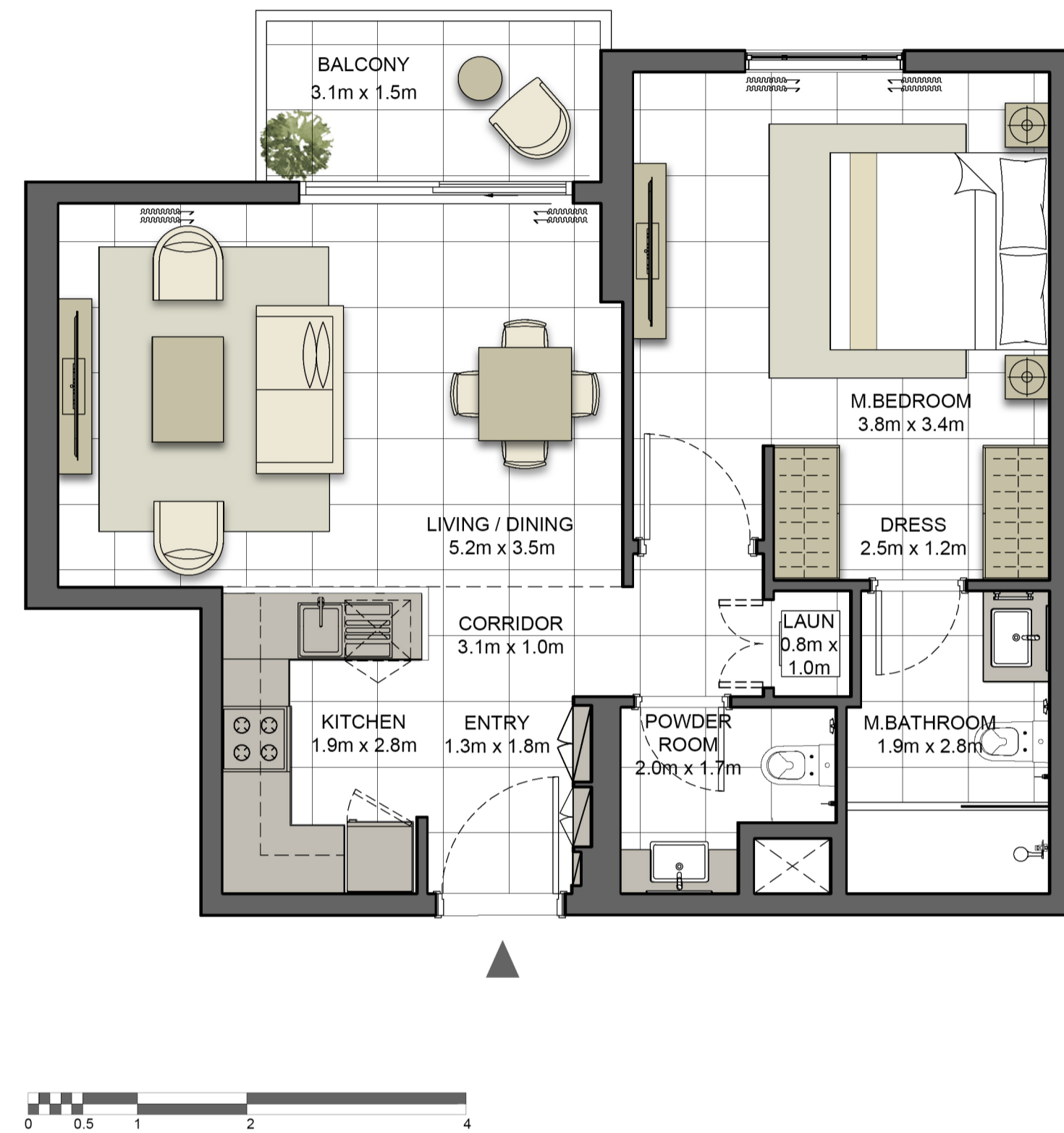
### Disclaimer:

1. All room dimensions are measured to structural elements and exclude all finishes and construction tolerances. 2. All dimensions have been provided by our consultant architects. 3. All materials, dimensions and drawings are approximate. Information is subject to change without notice. 4. Actual suite area may vary from the stated area. Drawings not to scale. The developer reserves the right to make revisions. 5. Calculation of suite area is measured as the area bounded by the centre line of the demising or partition walls separating one unit from another unit, the exterior face of all exterior walls, and the exterior face of the corridor wall enclosing the adjoining unit. 6. Calculation of balcony area is measured as the area bounded by the centre line of the demising or partition walls separating one unit from another unit, the outmost face of the enclosing guard and the external face of the unit adjoining the balcony. 7. The units are measured at typical floor in the building. Columns may vary in size depending on the floor level.

# کریستان

## CRYSTAL RESIDENCES TWO

BUILDING	CRYSTAL TWO
1 BEDROOM	TYPE 1B-1
UNIT NO.	303, 403, 503, 603, 703, 803, 903, 1003, 1103, 1202
SUITE AREA	63.5 m <sup>2</sup> / 683.8 ft <sup>2</sup>
BALCONY AREA	4.6 m <sup>2</sup> / 49.3 ft <sup>2</sup>
TOTAL AREA	68.1 m <sup>2</sup> / 733.1 ft <sup>2</sup>



جزيرة مريم  
MARYAM ISLAND

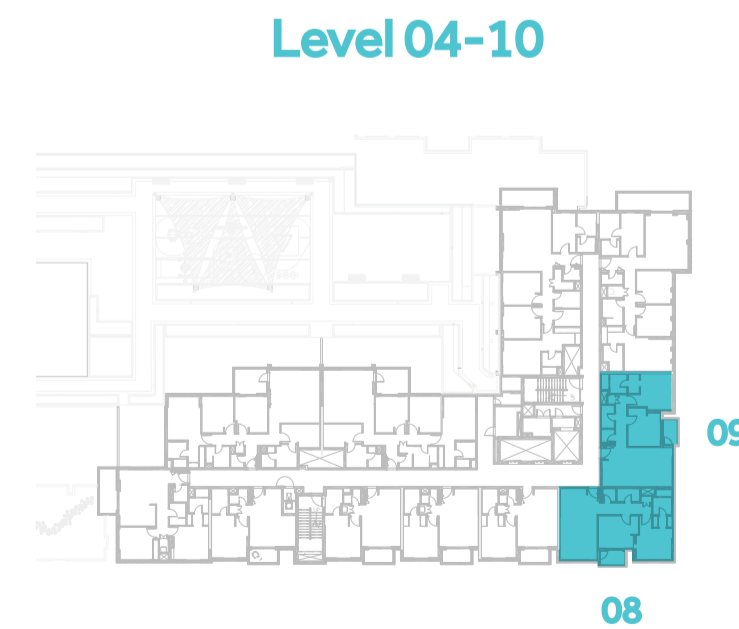
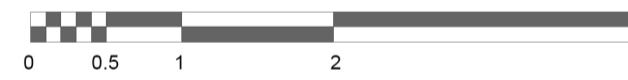
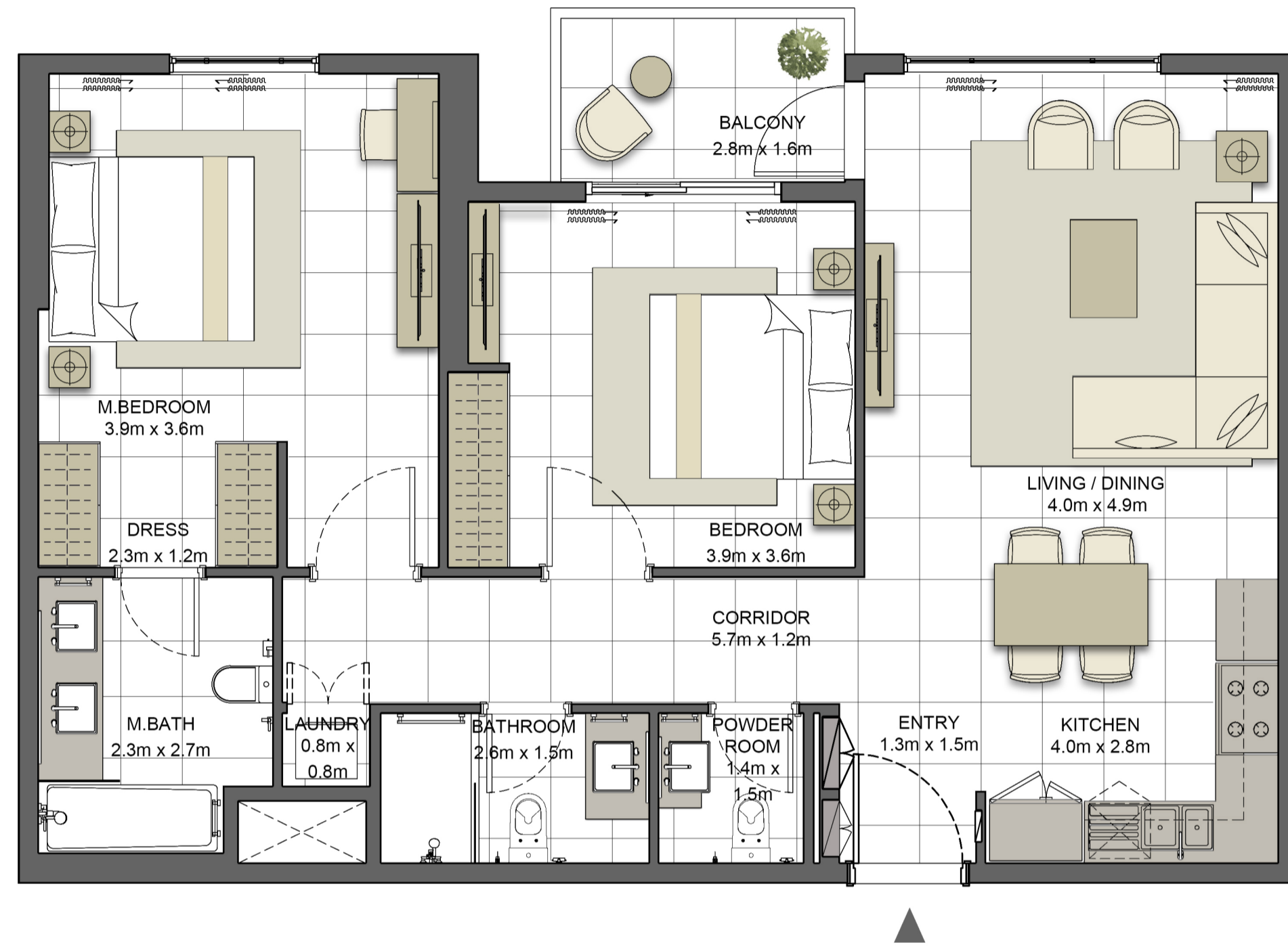
### Disclaimer:

1. All room dimensions are measured to structural elements and exclude all finishes and construction tolerances. 2. All dimensions have been provided by our consultant architects. 3. All materials, dimensions and drawings are approximate. Information is subject to change without notice. 4. Actual suite area may vary from the stated area. Drawings not to scale. The developer reserves the right to make revisions. 5. Calculation of suite area is measured as the area bounded by the centre line of the demising or partition walls separating one unit from another unit, the exterior face of all exterior walls, and the exterior face of the corridor wall enclosing the adjoining unit. 6. Calculation of balcony area is measured as the area bounded by the centre line of the demising or partition walls separating one unit from another unit, the outmost face of the enclosing guard and the external face of the unit adjoining the balcony. 7. The units are measured at typical floor in the building. Columns may vary in size depending on the floor level.

# کریستان

## CRYSTAL RESIDENCES TWO

BUILDING	CRYSTAL TWO
2 BEDROOM	TYPE 2A-2
UNIT NO.	308, 309, 408, 409, 508, 509, 608, 609, 708, 709, 808, 809, 908, 909, 1008, 1009, 1108, 1109, 1208, 1209
SUITE AREA	95.5 m <sup>2</sup> / 1027.5 ft <sup>2</sup>
BALCONY AREA	4.5 m <sup>2</sup> / 47.9 ft <sup>2</sup>
TOTAL AREA	99.9 m <sup>2</sup> / 1075.4 ft <sup>2</sup>



جزيرة مريم  
MARYAM ISLAND

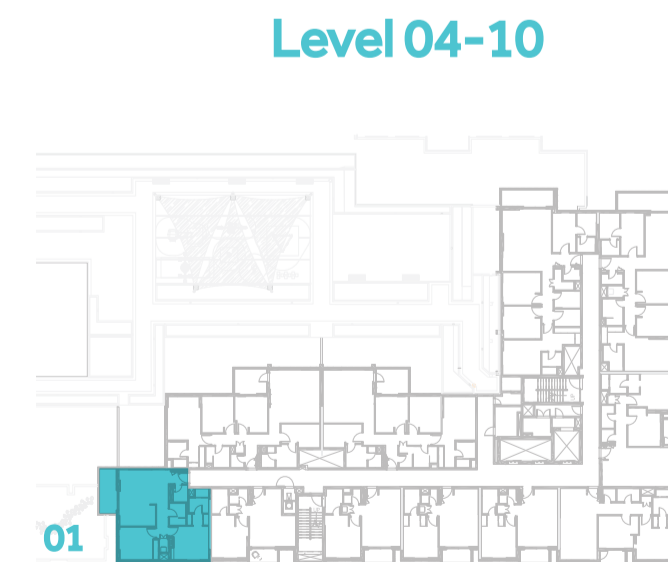
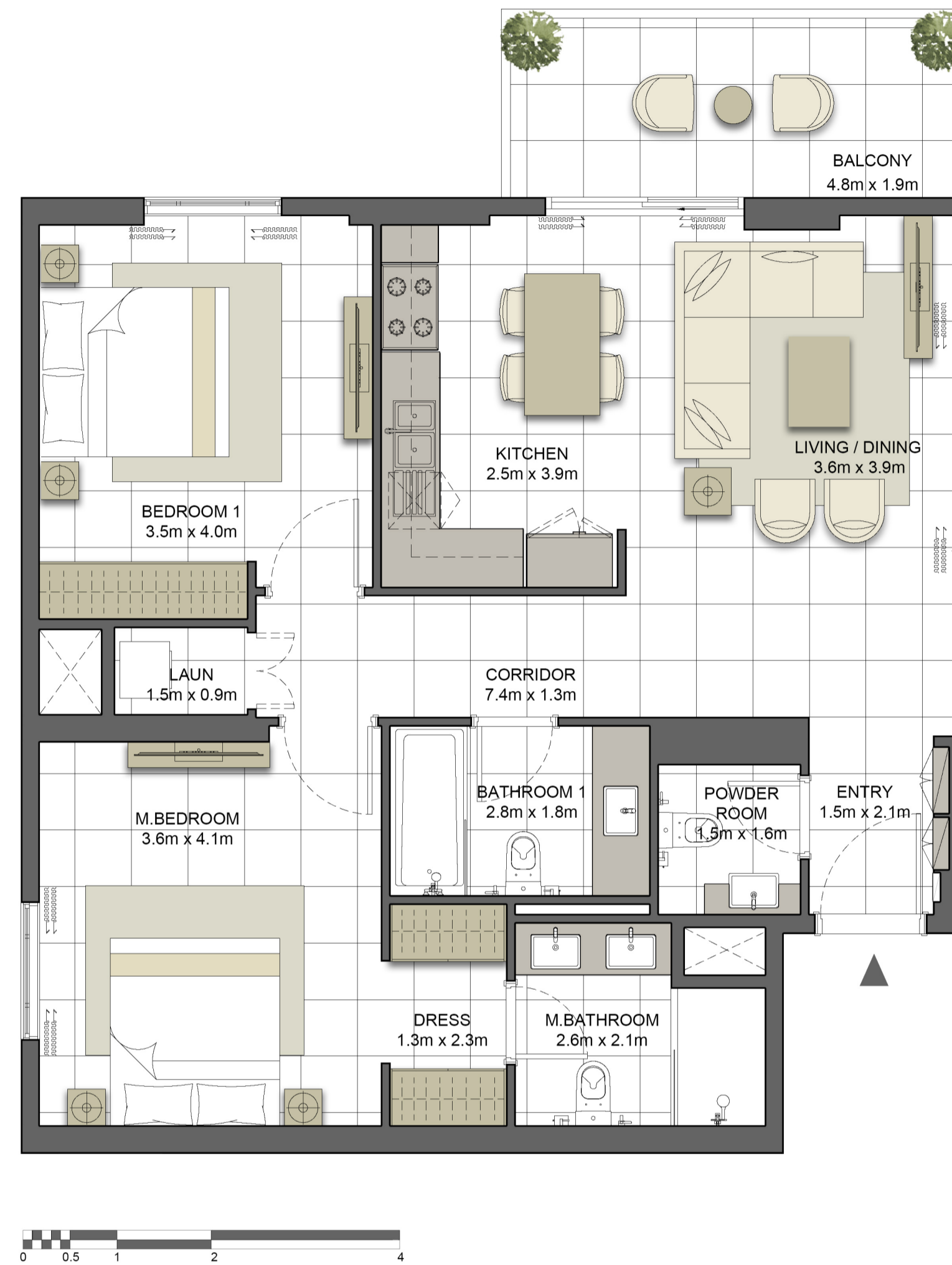
### Disclaimer:

1. All room dimensions are measured to structural elements and exclude all finishes and construction tolerances. 2. All dimensions have been provided by our consultant architects. 3. All materials, dimensions and drawings are approximate. Information is subject to change without notice. 4. Actual suite area may vary from the stated area. Drawings not to scale. The developer reserves the right to make revisions. 5. Calculation of suite area is measured as the area bounded by the centre line of the demising or partition walls separating one unit from another unit, the exterior face of all exterior walls, and the exterior face of the corridor wall enclosing the adjoining unit. 6. Calculation of balcony area is measured as the area bounded by the centre line of the demising or partition walls separating one unit from another unit, the outmost face of the enclosing guard and the external face of the unit adjoining the balcony. 7. The units are measured at typical floor in the building. Columns may vary in size depending on the floor level.

# کریستان

## CRYSTAL RESIDENCES TWO

BUILDING	CRYSTAL TWO
2 BEDROOM	TYPE 2C-1
UNIT NO.	401, 501, 601, 701, 801, 901, 1001, 1101, 1201
SUITE AREA	96.4 m <sup>2</sup> / 1037.1 ft <sup>2</sup>
BALCONY AREA	9.1 m <sup>2</sup> / 98.1 ft <sup>2</sup>
TOTAL AREA	105.5 m <sup>2</sup> / 1135.2 ft <sup>2</sup>



**Disclaimer:**

1. All room dimensions are measured to structural elements and exclude all finishes and construction tolerances. 2. All dimensions have been provided by our consultant architects. 3. All materials, dimensions and drawings are approximate. Information is subject to change without notice. 4. Actual suite area may vary from the stated area. Drawings not to scale. The developer reserves the right to make revisions. 5. Calculation of suite area is measured as the area bounded by the centre line of the demising or partition walls separating one unit from another unit, the exterior face of all exterior walls, and the exterior face of the corridor wall enclosing the adjoining unit. 6. Calculation of balcony area is measured as the area bounded by the centre line of the demising or partition walls separating one unit from another unit, the outmost face of the enclosing guard and the external face of the unit adjoining the balcony. 7. The units are measured at typical floor in the building. Columns may vary in size depending on the floor level.

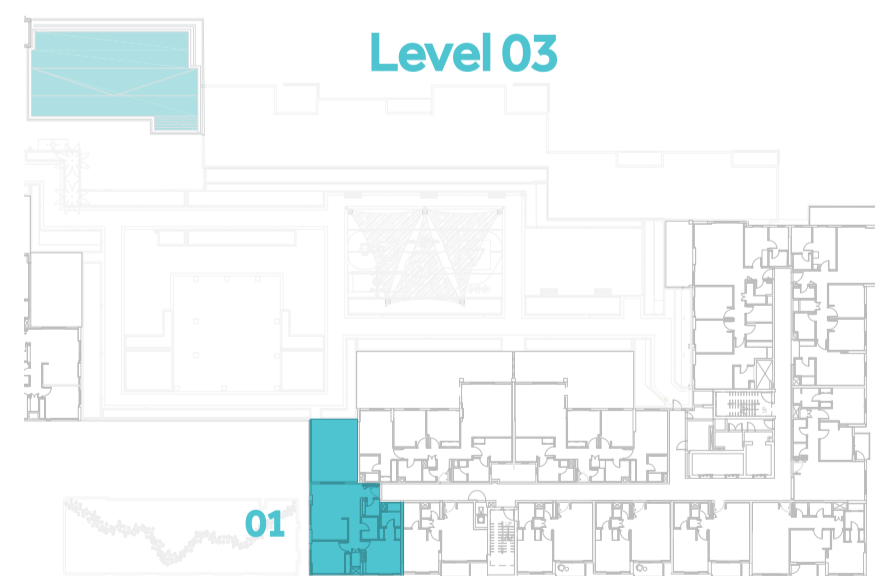
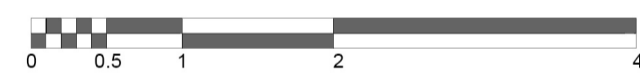


جزيرة مريم  
MARYAM ISLAND

# کریستان

## CRYSTAL RESIDENCES TWO

BUILDING	CRYSTAL TWO
2 BEDROOM	TYPE 2C
UNIT NO.	301
SUITE AREA	96.4 m <sup>2</sup> / 1037.4 ft <sup>2</sup>
TERRACE AREA	33.9 m <sup>2</sup> / 365.0 ft <sup>2</sup>
TOTAL AREA	130.3 m <sup>2</sup> / 1402.4 ft <sup>2</sup>



**Disclaimer:**

1. All room dimensions are measured to structural elements and exclude all finishes and construction tolerances. 2. All dimensions have been provided by our consultant architects. 3. All materials, dimensions and drawings are approximate. Information is subject to change without notice. 4. Actual suite area may vary from the stated area. Drawings not to scale. The developer reserves the right to make revisions. 5. Calculation of suite area is measured as the area bounded by the centre line of the demising or partition walls separating one unit from another unit, the exterior face of all exterior walls, and the exterior face of the corridor wall enclosing the adjoining unit. 6. Calculation of balcony area is measured as the area bounded by the centre line of the demising or partition walls separating one unit from another unit, the outmost face of the enclosing guard and the external face of the unit adjoining the balcony. 7. The units are measured at typical floor in the building. Columns may vary in size depending on the floor level.

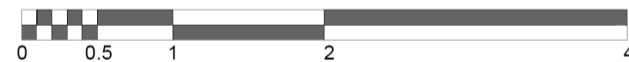


جزيرة مريم  
MARYAM ISLAND

# کریستان

## CRYSTAL RESIDENCES TWO

BUILDING	CRYSTAL TWO
3 BEDROOM +MAID	TYPE 3A
UNIT NO.	302
SUITE AREA	147.6 m <sup>2</sup> / 1588.2 ft <sup>2</sup>
COVERED TERRACE AREA	10.4 m <sup>2</sup> / 111.9 ft <sup>2</sup>
TERRACE AREA	77.4 m <sup>2</sup> / 832.7 ft <sup>2</sup>
TOTAL AREA	235.3 m <sup>2</sup> / 2532.9 ft <sup>2</sup>



### Disclaimer:

1. All room dimensions are measured to structural elements and exclude all finishes and construction tolerances. 2. All dimensions have been provided by our consultant architects. 3. All materials, dimensions and drawings are approximate. Information is subject to change without notice. 4. Actual suite area may vary from the stated area. Drawings not to scale. The developer reserves the right to make revisions. 5. Calculation of suite area is measured as the area bounded by the centre line of the demising or partition walls separating one unit from another unit, the exterior face of all exterior walls, and the exterior face of the corridor wall enclosing the adjoining unit. 6. Calculation of balcony area is measured as the area bounded by the centre line of the demising or partition walls separating one unit from another unit, the outmost face of the enclosing guard and the external face of the unit adjoining the balcony. 7. The units are measured at typical floor in the building. Columns may vary in size depending on the floor level.

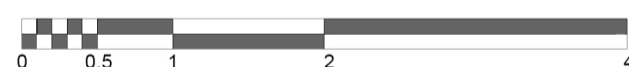


جزيرة مريم  
MARYAM ISLAND

# کریستان

## CRYSTAL RESIDENCES TWO

BUILDING	CRYSTAL TWO
3 BEDROOM +MAID	TYPE 3A-2
UNIT NO.	305
SUITE AREA	147.4 m <sup>2</sup> / 1587.0 ft <sup>2</sup>
COVERED TERRACE AREA	10.4 m <sup>2</sup> / 111.9 ft <sup>2</sup>
TERRACE AREA	52.8 m <sup>2</sup> / 567.9 ft <sup>2</sup>
TOTAL AREA	210.6 m <sup>2</sup> / 2266.9 ft <sup>2</sup>



Level 03



Level 04-10



Level 11



Level 12



**Disclaimer:**

1. All room dimensions are measured to structural elements and exclude all finishes and construction tolerances. 2. All dimensions have been provided by our consultant architects. 3. All materials, dimensions and drawings are approximate. Information is subject to change without notice. 4. Actual suite area may vary from the stated area. Drawings not to scale. The developer reserves the right to make revisions. 5. Calculation of suite area is measured as the area bounded by the centre line of the demising or partition walls separating one unit from another unit, the exterior face of all exterior walls, and the exterior face of the corridor wall enclosing the adjoining unit. 6. Calculation of balcony area is measured as the area bounded by the centre line of the demising or partition walls separating one unit from another unit, the outmost face of the enclosing guard and the external face of the unit adjoining the balcony. 7. The units are measured at typical floor in the building. Columns may vary in size depending on the floor level.



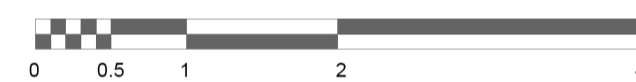
جزيرة مريم  
MARYAM ISLAND



# کریستان

## CRYSTAL RESIDENCES TWO

BUILDING	CRYSTAL TWO
3 BEDROOM +MAID	TYPE 3A-3
UNIT NO.	402, 502, 602, 702, 802, 902, 1002
SUITE AREA	147.5 m <sup>2</sup> / 1587.7 ft <sup>2</sup>
BALCONY AREA	9.8 m <sup>2</sup> / 105.1 ft <sup>2</sup>
TOTAL AREA	157.3 m <sup>2</sup> / 1692.7 ft <sup>2</sup>



Level 03



Level 04-10



Level 11



Level 12



**Disclaimer:**

1. All room dimensions are measured to structural elements and exclude all finishes and construction tolerances. 2. All dimensions have been provided by our consultant architects. 3. All materials, dimensions and drawings are approximate. Information is subject to change without notice. 4. Actual suite area may vary from the stated area. Drawings not to scale. The developer reserves the right to make revisions. 5. Calculation of suite area is measured as the area bounded by the centre line of the demising or partition walls separating one unit from another unit, the exterior face of all exterior walls, and the exterior face of the corridor wall enclosing the adjoining unit. 6. Calculation of balcony area is measured as the area bounded by the centre line of the demising or partition walls separating one unit from another unit, the outmost face of the enclosing guard and the external face of the unit adjoining the balcony. 7. The units are measured at typical floor in the building. Columns may vary in size depending on the floor level.



جزيرة مريم  
MARYAM ISLAND

# کریستان

## CRYSTAL RESIDENCES TWO

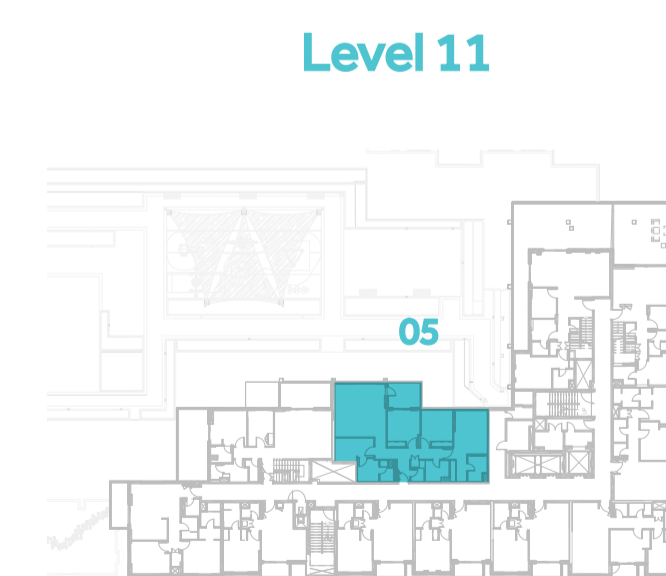
BUILDING	CRYSTAL TWO
3 BEDROOM +MAID	TYPE 3A-4
UNIT NO.	405, 505, 605, 705, 805, 905, 1005, 1105, 1205
SUITE AREA	147.2 m <sup>2</sup> / 1584.0 ft <sup>2</sup>
BALCONY AREA	9.8 m <sup>2</sup> / 105.1 ft <sup>2</sup>
TOTAL AREA	156.9 m <sup>2</sup> / 1689.1 ft <sup>2</sup>



Level 03



Level 04-10



Level 11



Level 12



جزيرة مريم  
MARYAM ISLAND

### Disclaimer:

1. All room dimensions are measured to structural elements and exclude all finishes and construction tolerances. 2. All dimensions have been provided by our consultant architects. 3. All materials, dimensions and drawings are approximate. Information is subject to change without notice. 4. Actual suite area may vary from the stated area. Drawings not to scale. The developer reserves the right to make revisions. 5. Calculation of suite area is measured as the area bounded by the centre line of the demising or partition walls separating one unit from another unit, the exterior face of all exterior walls, and the exterior face of the corridor wall enclosing the adjoining unit. 6. Calculation of balcony area is measured as the area bounded by the centre line of the demising or partition walls separating one unit from another unit, the outmost face of the enclosing guard and the external face of the unit adjoining the balcony. 7. The units are measured at typical floor in the building. Columns may vary in size depending on the floor level.

BUILDING	<b>CRYSTAL TWO</b>
3 BEDROOM +MAID	<b>TYPE 3C</b>
UNIT NO.	<b>310, 410, 510, 610, 710, 810, 910, 1010</b>
SUITE AREA	<b>152.5 m<sup>2</sup> / 1641.7 ft<sup>2</sup></b>
BALCONY AREA	<b>15.1 m<sup>2</sup> / 162.4 ft<sup>2</sup></b>
TOTAL AREA	<b>167.6 m<sup>2</sup> / 1804.1 ft<sup>2</sup></b>



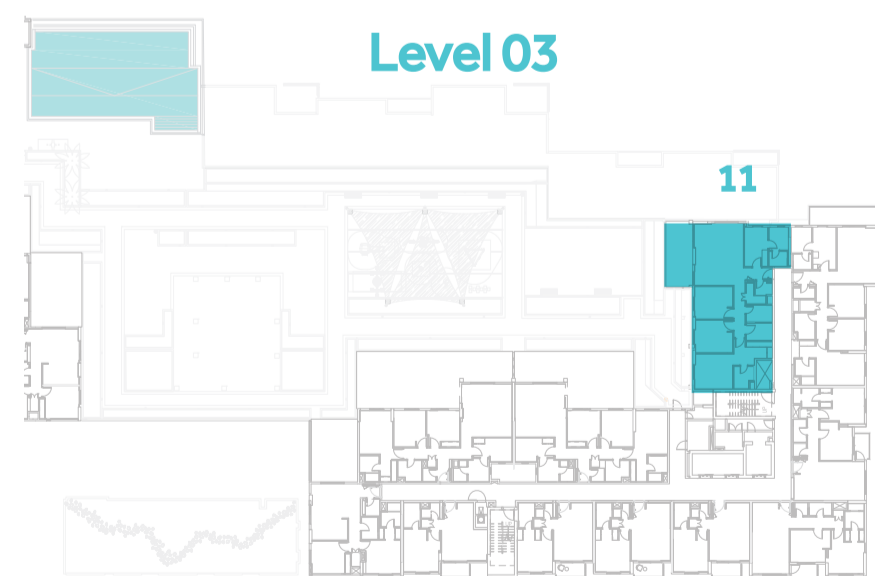
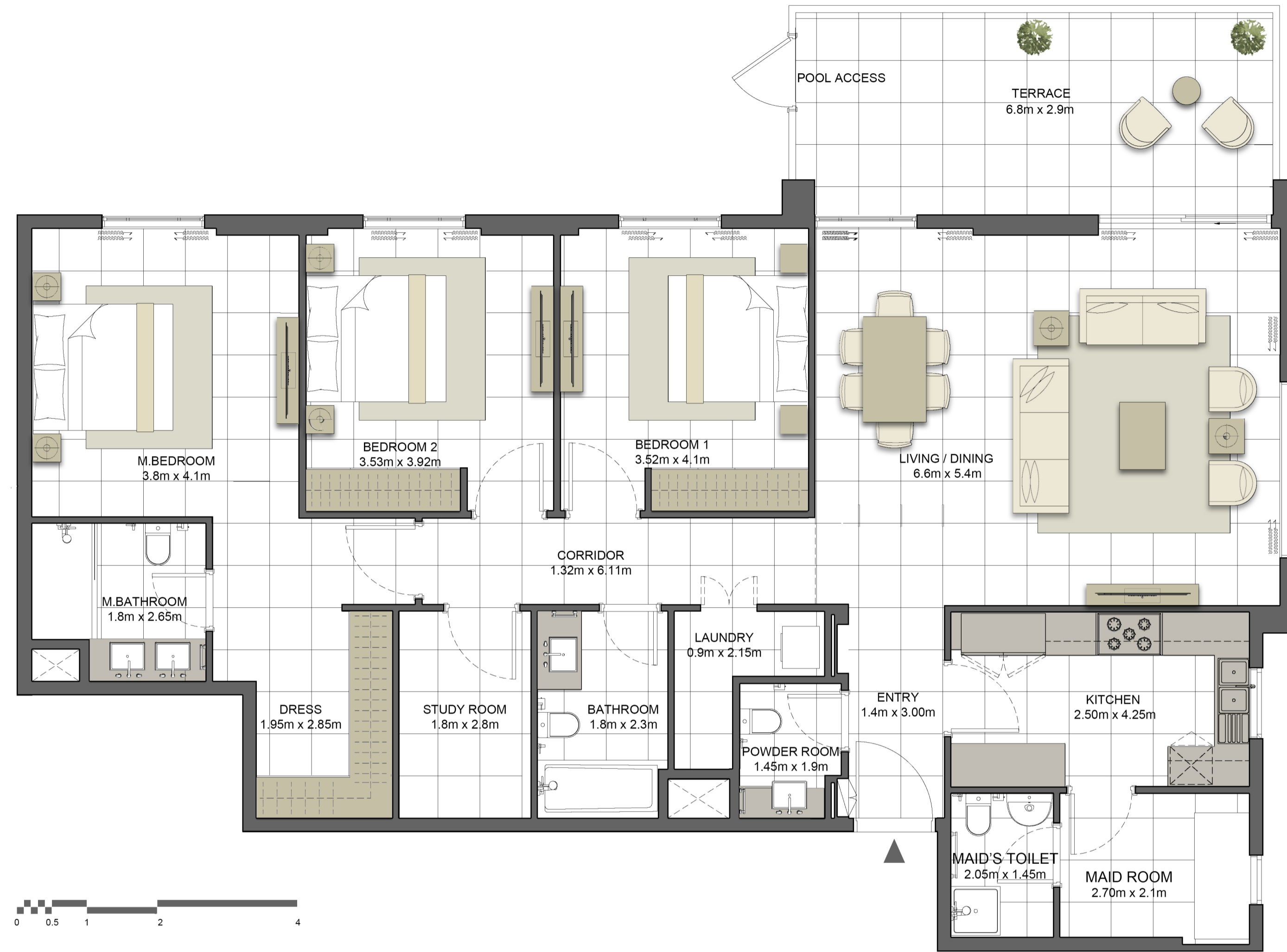
**Disclaimer:**

1. All room dimensions are measured to structural elements and exclude all finishes and construction tolerances. 2. All dimensions have been provided by our consultant architects. 3. All materials, dimensions and drawings are approximate. Information is subject to change without notice. 4. Actual suite area may vary from the stated area. Drawings not to scale. The developer reserves the right to make revisions. 5. Calculation of suite area is measured as the area bounded by the centre line of the demising or partition walls separating one unit from another unit, the exterior face of all exterior walls, and the exterior face of the corridor wall enclosing the adjoining unit. 6. Calculation of balcony area is measured as the area bounded by the centre line of the demising or partition walls separating one unit from another unit, the outmost face of the enclosing guard and the external face of the unit adjoining the balcony. 7. The units are measured at typical floor in the building. Columns may vary in size depending on the floor level.

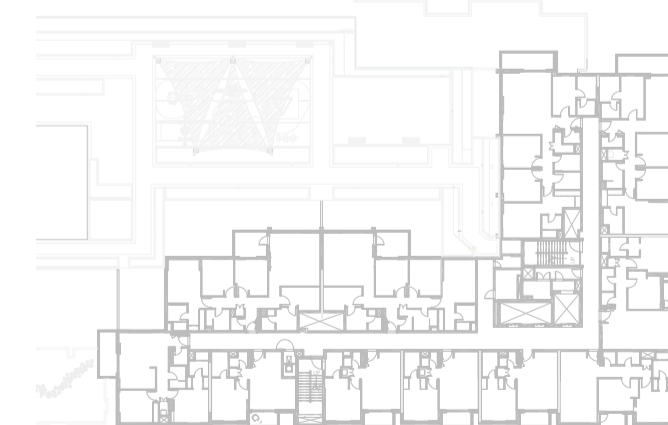
# کریستان

## CRYSTAL RESIDENCES TWO

BUILDING	CRYSTAL TWO
3 BEDROOM +MAID+STUDY	TYPE 3D
UNIT NO.	311
SUITE AREA	160.6 m <sup>2</sup> / 1729 ft <sup>2</sup>
BALCONY AREA	20.6 m <sup>2</sup> / 221.5 ft <sup>2</sup>
TOTAL AREA	181.2 m <sup>2</sup> / 1950.5 ft <sup>2</sup>



Level 03



Level 04-10



Level 11



Level 12



### Disclaimer:

1. All room dimensions are measured to structural elements and exclude all finishes and construction tolerances. 2. All dimensions have been provided by our consultant architects. 3. All materials, dimensions and drawings are approximate. Information is subject to change without notice. 4. Actual suite area may vary from the stated area. Drawings not to scale. The developer reserves the right to make revisions. 5. Calculation of suite area is measured as the area bounded by the centre line of the demising or partition walls separating one unit from another unit, the exterior face of all exterior walls, and the exterior face of the corridor wall enclosing the adjoining unit. 6. Calculation of balcony area is measured as the area bounded by the centre line of the demising or partition walls separating one unit from another unit, the outmost face of the enclosing guard and the external face of the unit adjoining the balcony. 7. The units are measured at typical floor in the building. Columns may vary in size depending on the floor level.

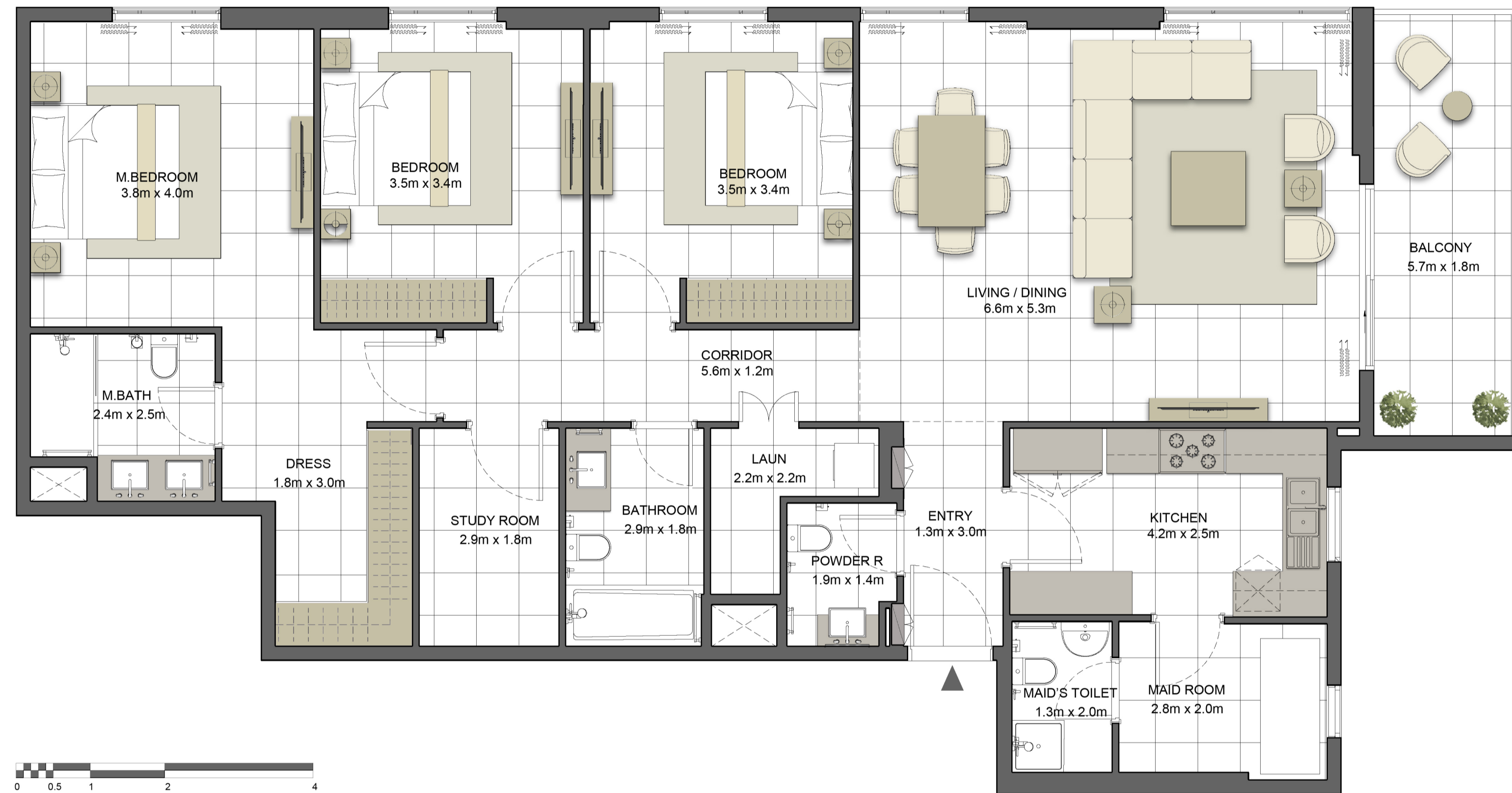


جزيرة مريم  
MARYAM ISLAND

# کریستان

## CRYSTAL RESIDENCES TWO

BUILDING	CRYSTAL TWO
3 BEDROOM +MAID+STUDY	TYPE 3E
UNIT NO.	411, 511, 611, 711, 811, 911, 1011
SUITE AREA	160.7 m <sup>2</sup> / 1730.1 ft <sup>2</sup>
BALCONY AREA	10.5 m <sup>2</sup> / 112.8 ft <sup>2</sup>
TOTAL AREA	171.2 m <sup>2</sup> / 1842.9 ft <sup>2</sup>



Level 03



Level 04-10



Level 11



Level 12



**Disclaimer:**

1. All room dimensions are measured to structural elements and exclude all finishes and construction tolerances. 2. All dimensions have been provided by our consultant architects. 3. All materials, dimensions and drawings are approximate. Information is subject to change without notice. 4. Actual suite area may vary from the stated area. Drawings not to scale. The developer reserves the right to make revisions. 5. Calculation of suite area is measured as the area bounded by the centre line of the demising or partition walls separating one unit from another unit, the exterior face of all exterior walls, and the exterior face of the corridor wall enclosing the adjoining unit. 6. Calculation of balcony area is measured as the area bounded by the centre line of the demising or partition walls separating one unit from another unit, the outmost face of the enclosing guard and the external face of the unit adjoining the balcony. 7. The units are measured at typical floor in the building. Columns may vary in size depending on the floor level.

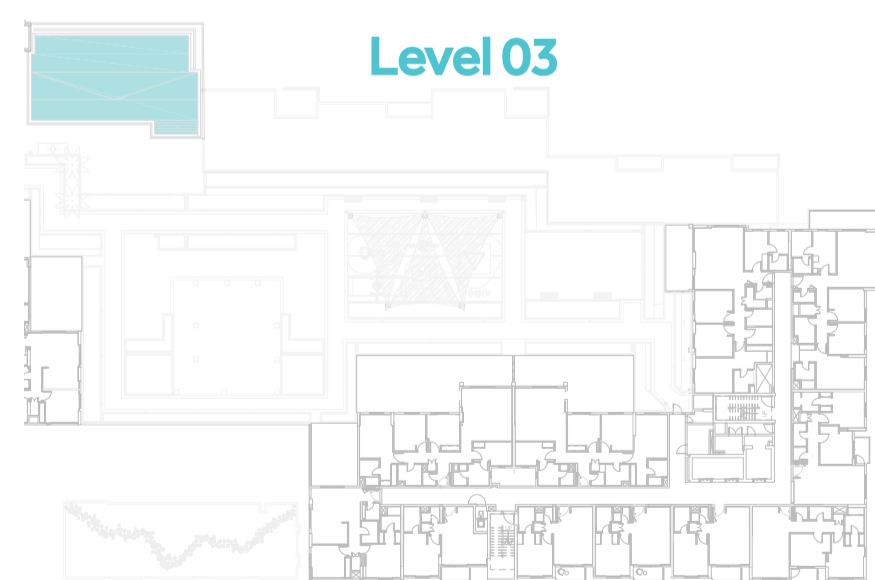


جزيرة مريم  
MARYAM ISLAND

# کریستان

## CRYSTAL RESIDENCES TWO

BUILDING	CRYSTAL TWO
4 BEDROOM +MAID	TYPE 4D-A1
UNIT NO.	1110
SUITE AREA	194.8 m <sup>2</sup> / 2097.1 ft <sup>2</sup>
BALCONY AREA	13.6 m <sup>2</sup> / 146.7 ft <sup>2</sup>
TERRACE AREA	66.3 m <sup>2</sup> / 713.3 ft <sup>2</sup>
TOTAL AREA	274.7 m <sup>2</sup> / 2957.2 ft <sup>2</sup>



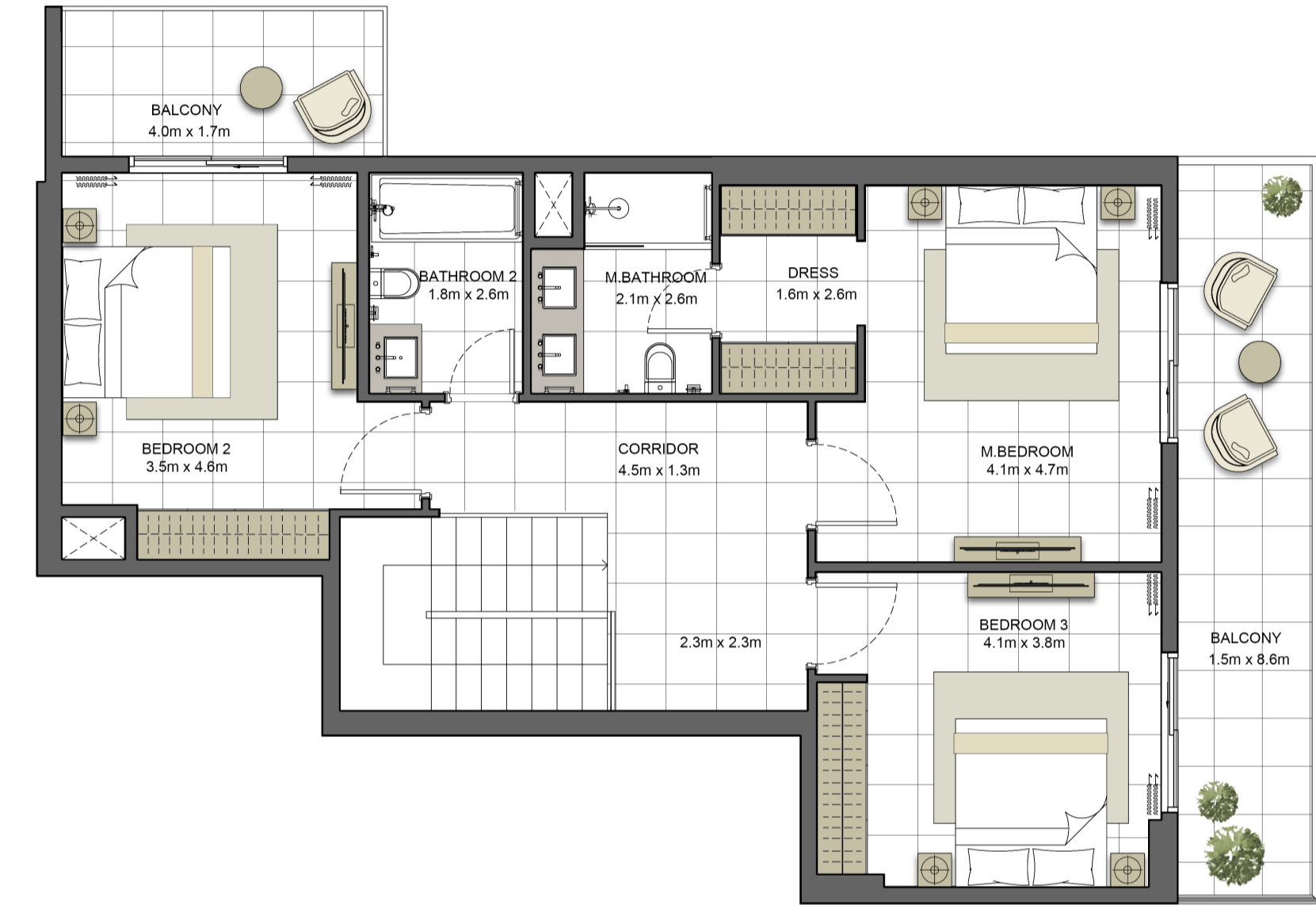
### Disclaimer:

1. All room dimensions are measured to structural elements and exclude all finishes and construction tolerances. 2. All dimensions have been provided by our consultant architects. 3. All materials, dimensions and drawings are approximate. Information is subject to change without notice. 4. Actual suite area may vary from the stated area. Drawings not to scale. The developer reserves the right to make revisions. 5. Calculation of suite area is measured as the area bounded by the centre line of the demising or partition walls separating one unit from another unit, the exterior face of all exterior walls, and the exterior face of the corridor wall enclosing the adjoining unit. 6. Calculation of balcony area is measured as the area bounded by the centre line of the demising or partition walls separating one unit from another unit, the outmost face of the enclosing guard and the external face of the unit adjoining the balcony. 7. The units are measured at typical floor in the building. Columns may vary in size depending on the floor level.



جزيرة مريم  
MARYAM ISLAND

BUILDING	<b>CRYSTAL TWO</b>
4 BEDROOM +MAID	<b>TYPE 4D-B1</b>
UNIT NO.	<b>1111</b>
SUITE AREA	<b>214.0 m<sup>2</sup> / 2303.5 ft<sup>2</sup></b>
BALCONY AREA	<b>20.6 m<sup>2</sup> / 222.1 ft<sup>2</sup></b>
TERRACE AREA	<b>71.6 m<sup>2</sup> / 770.9 ft<sup>2</sup></b>
TOTAL AREA	<b>306.3 m<sup>2</sup> / 3296.4 ft<sup>2</sup></b>



Level 03



Level 04-10



Level 11



Level 12

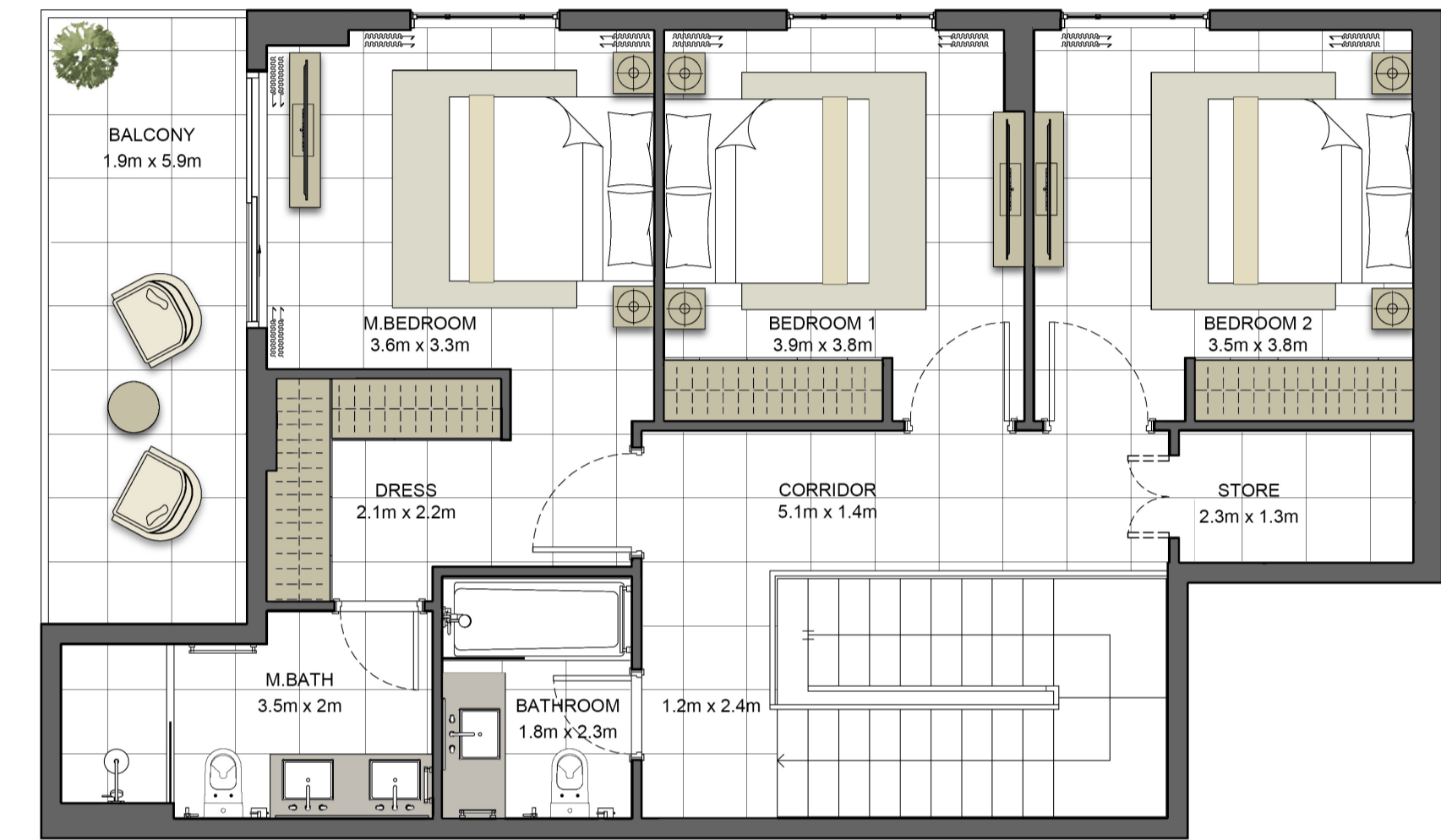
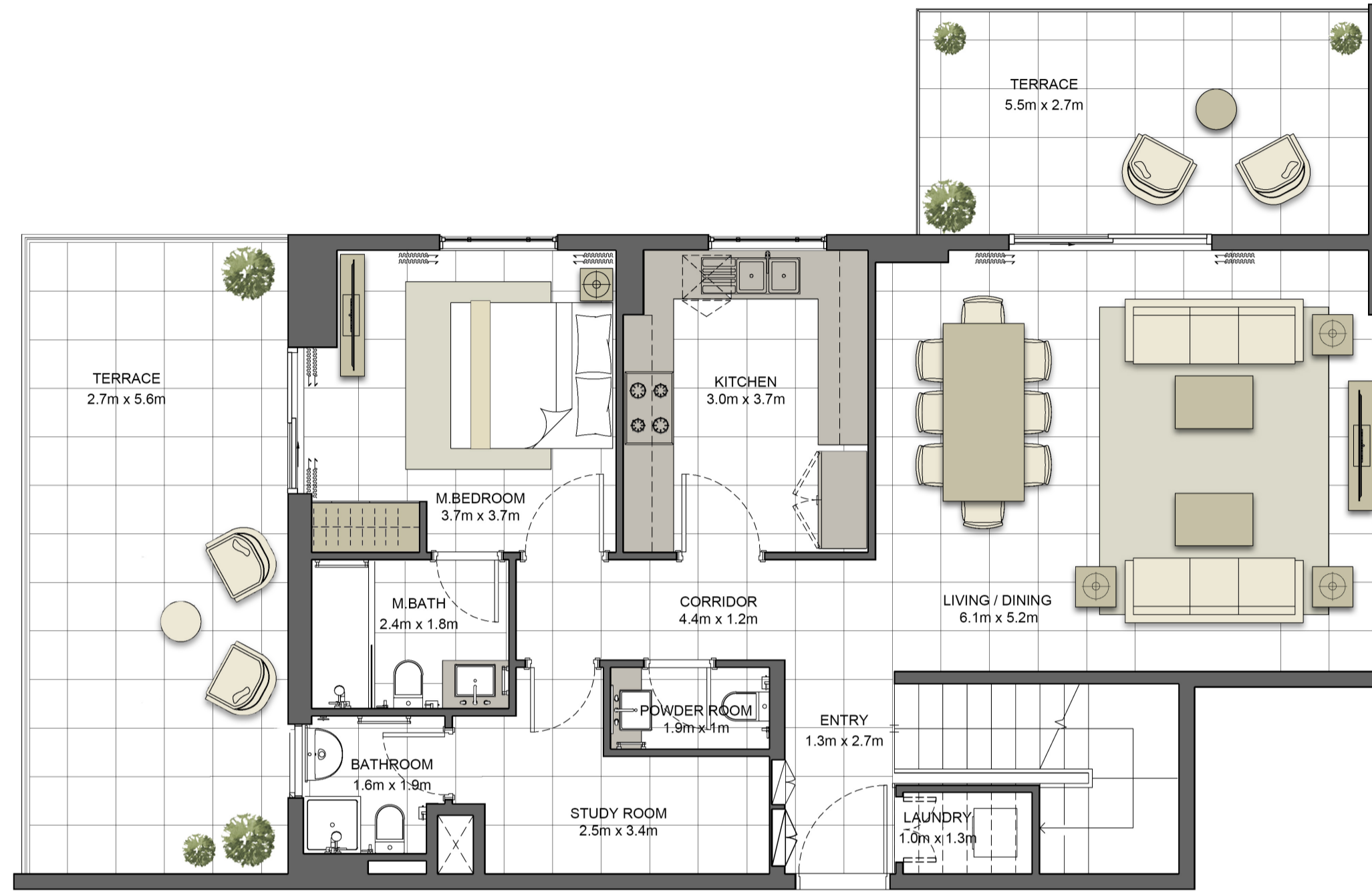


**Disclaimer:**

1. All room dimensions are measured to structural elements and exclude all finishes and construction tolerances. 2. All dimensions have been provided by our consultant architects. 3. All materials, dimensions and drawings are approximate. Information is subject to change without notice. 4. Actual suite area may vary from the stated area. Drawings not to scale. The developer reserves the right to make revisions. 5. Calculation of suite area is measured as the area bounded by the centre line of the demising or partition walls separating one unit from another unit, the exterior face of all exterior walls, and the exterior face of the corridor wall enclosing the adjoining unit. 6. Calculation of balcony area is measured as the area bounded by the centre line of the demising or partition walls separating one unit from another unit, the outmost face of the enclosing guard and the external face of the unit adjoining the balcony. 7. The units are measured at typical floor in the building. Columns may vary in size depending on the floor level.

## CRYSTAL RESIDENCES TWO

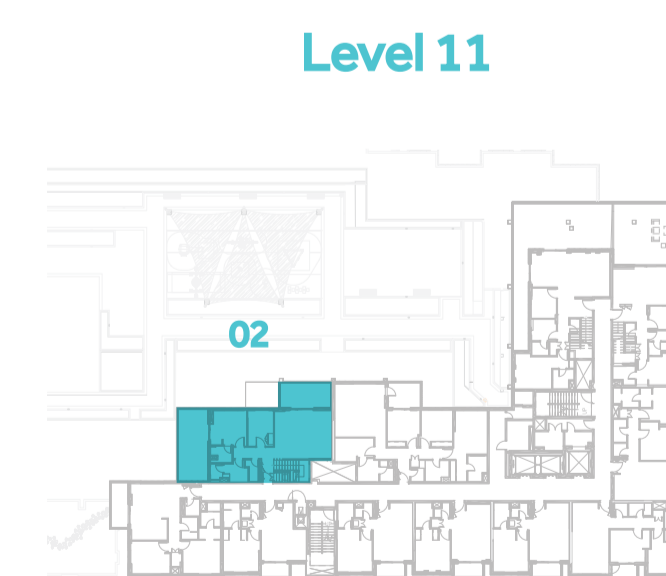
BUILDING	CRYSTAL TWO
4 BEDROOM +MAID	TYPE 4D-C1
UNIT NO.	1102
SUITE AREA	195.2 m <sup>2</sup> / 2101.2 ft <sup>2</sup>
BALCONY AREA	9.8 m <sup>2</sup> / 105.5 ft <sup>2</sup>
TERRACE AREA	40.9 m <sup>2</sup> / 440.2 ft <sup>2</sup>
TOTAL AREA	245.9 m <sup>2</sup> / 2647.0 ft <sup>2</sup>



Level 03



Level 04-10



Level 11



Level 12



Disclaimer:

1. All room dimensions are measured to structural elements and exclude all finishes and construction tolerances. 2. All dimensions have been provided by our consultant architects. 3. All materials, dimensions and drawings are approximate. Information is subject to change without notice. 4. Actual suite area may vary from the stated area. Drawings not to scale. The developer reserves the right to make revisions. 5. Calculation of suite area is measured as the area bounded by the centre line of the demising or partition walls separating one unit from another unit, the exterior face of all exterior walls, and the exterior face of the corridor wall enclosing the adjoining unit. 6. Calculation of balcony area is measured as the area bounded by the centre line of the demising or partition walls separating one unit from another unit, the outmost face of the enclosing guard and the external face of the unit adjoining the balcony. 7. The units are measured at typical floor in the building. Columns may vary in size depending on the floor level.