

CREEKSIDER18



DUBAI CREEK
HARBOUR

EMAAR

DUBAI CREEK HARBOUR

Dubai Creek Harbour is an ultra-modern and stylish neighbourhood situated along the historic Dubai Creek.

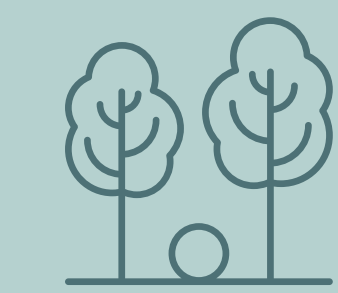
Designed with pedestrian-friendly streets, Dubai Creek Harbour offers convenient connections between the neighbourhood centre and a viable mix of retail, business, recreation, parks, open spaces, and community facilities, all within walking distance.



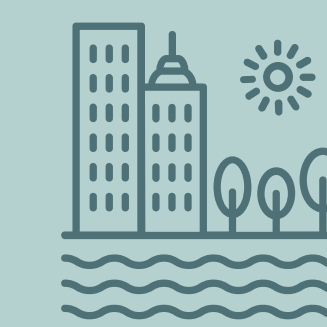
CREEK ISLAND

Creek Island in Dubai Creek Harbour is a one-of-a-kind waterfront destination offering residents the very best of lavish island living.

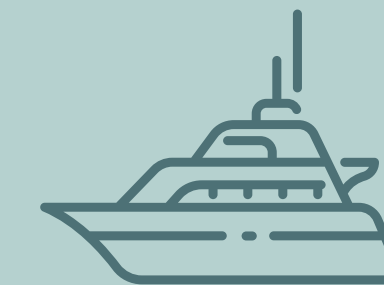
Set against the backdrop of Dubai's awe-inspiring skyline and the natural beauty of the historic creek, Creek Island is home to a world of outstanding leisure, retail, dining and recreational venues and amenities.



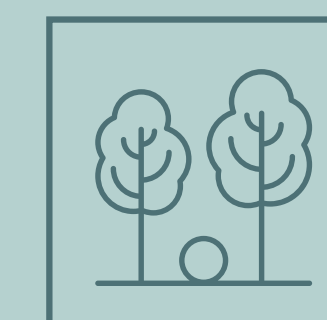
CENTRAL PARK



CREEK MARINA & WATERFRONT PROMENADE



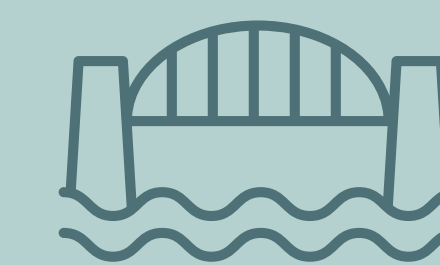
CREEK MARINA YACHT CLUB



BREATH-TAKING VIEWS OF THE WATERFRONT & CENTRAL PARK



WORLD-CLASS DINING & RETAIL DESTINATIONS



VIDA CREEK HARBOUR & ADDRESS HARBOUR POINT





CREEKSIDE 18

Extending into the heart of Dubai Creek, the stunning Creekside 18 towers elegantly preside over this lush, palm-tree-lined waterfront setting in Dubai Creek Harbour. Home to a plethora of vibrant leisure, retail, dining, entertainment, and recreational options, this thriving community provides a glamorous, urban atmosphere for residents and visitors to enjoy every day.

A NEW
Sophisticated
WAY OF LIFE

AT THE HEART OF CREEK ISLAND



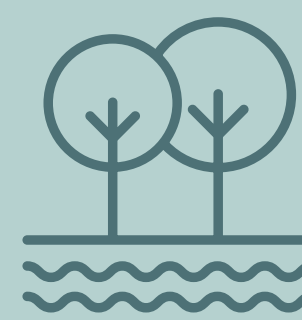
15 MINUTES

drive to Dubai International Airport



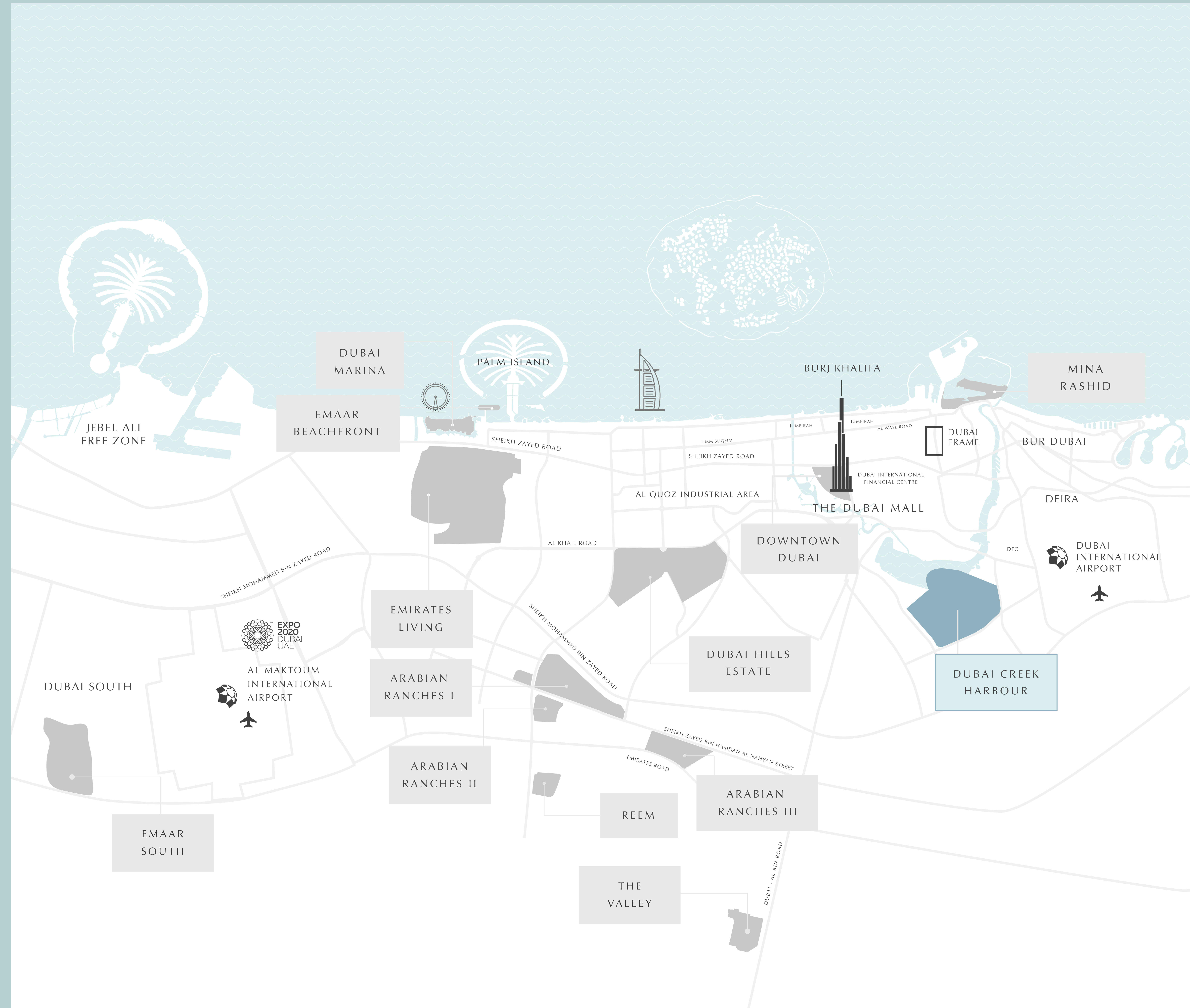
10 MINUTES

drive to Downtown Dubai



5 MINUTES

drive to Ras Al Khor Wildlife Sanctuary





ENDLESS POSSIBILITIES

Soaring high above the iconic creek, Creekside 18 is home to more than 450 dazzling one, two, three and four-bedroom glass-fronted apartments, all with spacious outdoor balconies from which to savour the incredible views.



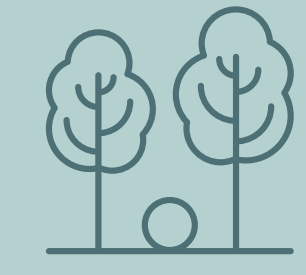
CREEKSIDE 18

INFINITE STYLE & SOPHISTICATION

A unique blend of contemporary style and local charm, every Creekside 18 residence reflects an ambience of understated elegance. The one, two, three and four-bedroom luxury apartments showcase spectacular waterfront views, set against the iconic backdrop of the inimitable city skyline.

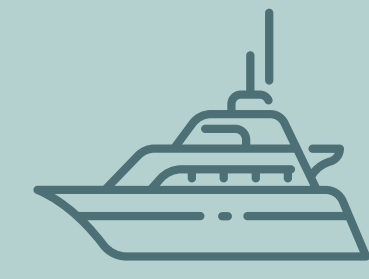


A THRIVING COMMUNITY



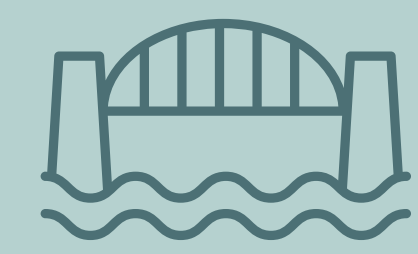
2 MINUTES

walk to Central Park



3 MINUTES

walk to Creek Marina



5 MINUTES

walk to Vida Creek Harbour





The interiors of the spacious apartments mirror Creekside 18's refined, modern design, accentuated by a unique blend of contemporary, understated style and local touches.

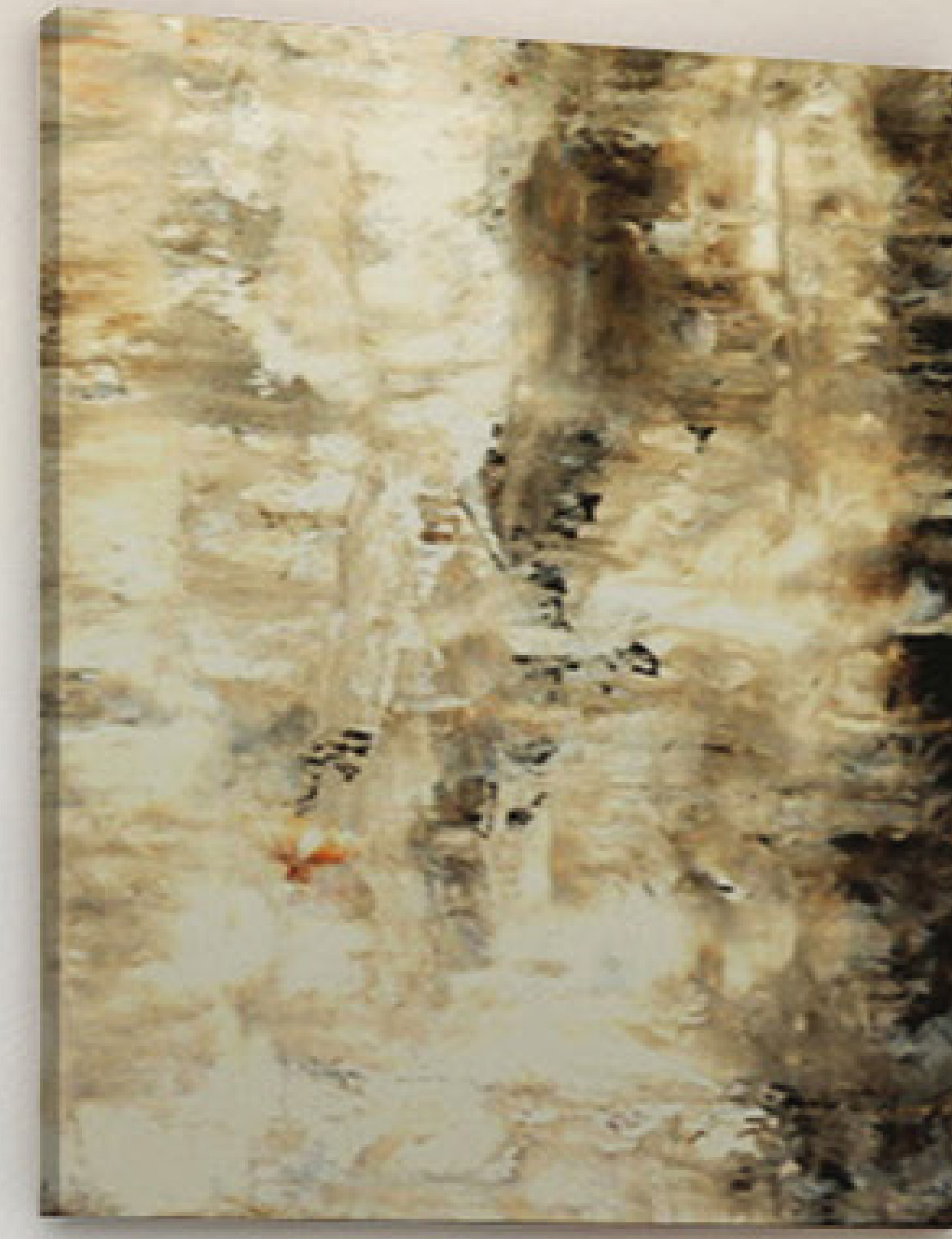
WHERE *Style*
& COMFORT
WORK IN HARMONY

INTELLIGENT DESIGN FOR SPACIOUS LIVING

Stunning floor-to-ceiling windows frame the wonderful views across the creek and flood the apartments with natural light.



Stylish
INTERIORS FOR A
SOPHISTICATED LIFESTYLE





SEIZE EVERY MOMENT

Creekside 18 apartments come with dedicated parking and a convenient drop-off zone that connects directly to the main lobby. Serene swimming pools and intimately positioned sun loungers invite you to make the most of the afternoon sun, while a fully equipped gym, barbecue stations and kids' play areas are perfect for spending treasured time with friends and loved ones.

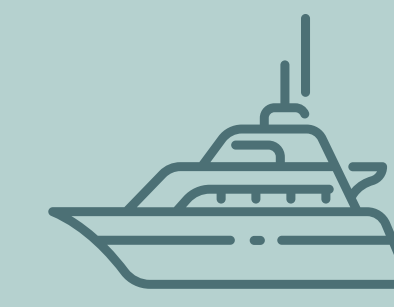
- Squash Court
- Temperature-Controlled Swimming Pools
- Start-of-the-Art Gym
- Extensive Selection of Retail & Dining Options
- Children's Play Areas
- Exquisitely Landscaped Podium

18



CREEK MARINA

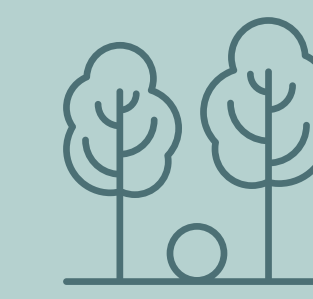
Find the perfect balance between urban life and waterfront tranquility at Creek Marina.



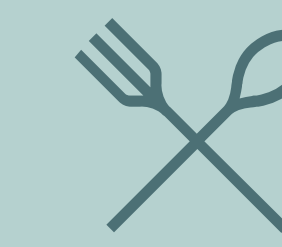
CREEK MARINA
YACHT CLUB



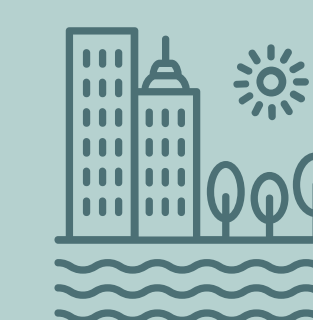
INTERACTIVE
ART INSTALLATIONS



NEAR
CENTRAL PARK



GOURMET
DINING OPTIONS



WATERFRONT
PROMENADE



WI-FI
HOTSPOTS

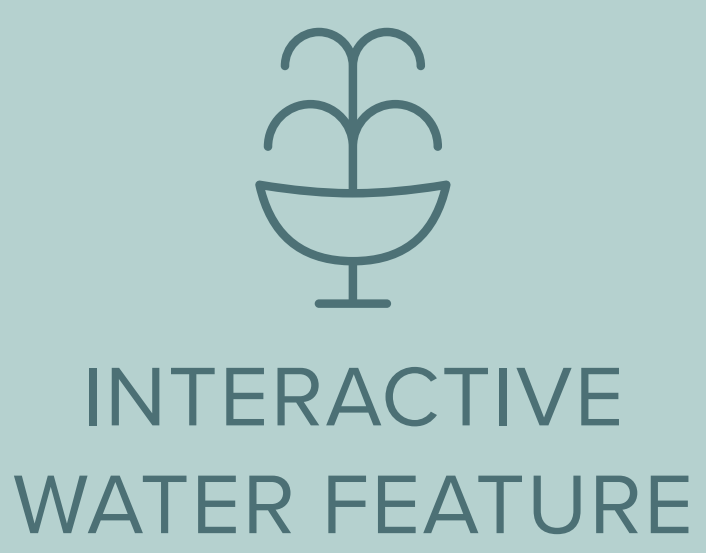


CENTRAL PARK

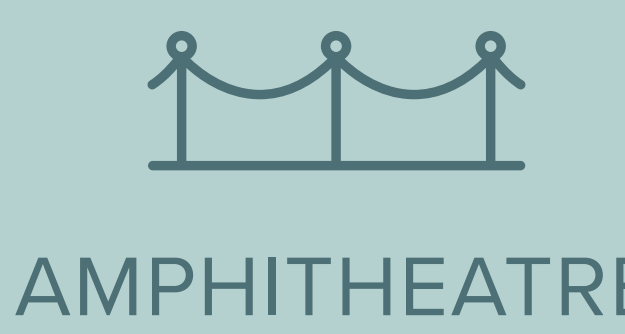
Central Park is the focal point of future-ready island living. Surrounded by Creek Island's breath-taking, contemporary, residential buildings – Central Park offers residents a tranquil retreat for relaxation, world-class amenities for enjoyment, and wide-open spaces for boundless recreation.



VERDANT
OPEN SPACES



INTERACTIVE
WATER FEATURE



AMPHITHEATRE



PICTURESQUE
DESERT GARDEN



KIDS' PLAYGROUND
& GAMES AREA



FITNESS PLAZA
& SKATE PARK



WHY *Invest* IN DUBAI

- 20 MN Expected Annual Visitors by 2025
 - Home to Over 200 Nationalities
- Competitive Residential Real Estate Prices
 - Over 3 MN Residents
 - Home to Expo 2020
- One of The Most Secure Cities for Value Gains through Property Investment

EMAAR

GLOBAL LIFESTYLE DEVELOPER

An undisputed leader in the global real estate market, Emaar has grown over the years to become the largest real estate developer outside of mainland China. You will be investing with one of the most-loved brands in the world.*

MARKET CAP

AED

21BN

FY 2020

REVENUE

AED

19.7BN

FY 2020

NET PROFIT

AED

2.6BN

FY 2020

RESIDENTIAL UNITS
DELIVERED

72,000+

UNITS UNDER
CONSTRUCTION

38,000+

CONTACT US

For more information on CREEKSIDE 18 AT DUBAI CREEK HARBOUR
please call 800 36227 (UAE) / +971 4 366 1688 (International)
or talk to our Property Advisor directly at +971 4888 8844 from 9 AM to 7 PM (GST), Sunday - Thursday.
Visit our online sales centre at emaar.com or any of our Sales Centres across the UAE.

DUBAI

Emaar Sales Centre | Downtown Dubai
9:30 AM to 10:00 PM, Sunday - Friday | From 1:00 PM to 7:00 PM, Saturday

Dubai Hills Estate Sales Pavilion | Umm Suqeim Road
Dubai Creek Harbour Sales Pavilion | Ras Al Khor
9:30 AM to 10:00 PM, Sunday - Friday | From 1:00 PM to 7:00 PM, Saturday

ABU DHABI

Emaar Sales Centre | Al Nahda Tower, Ground Floor, 4th Street, Corniche, Al Muroor Road
9:30 AM to 10:00 PM, Sunday - Friday | Closed, Saturday

DUBAI CREEK
HARBOUR

EMAAR