

ملتقى

DUBAI



الواقية

DUBAI

The Tree of Life

Sometimes in real estate, luxury can be
a cosmetic and seductive veneer.
A bit of a soulless cliché.

We passionately feel it should be something more.

Something organic and vivid. Mysterious and
unique. Imaginative and all-enveloping. Something
that truly enriches your soul and well-being.



THE MAIN FACADE VIEW FROM THE CANAL

Location

Peace, views and tranquility - are the key words of Eywa.

The residential building **Eywa** will be built in the Business Bay area on the shore of the main water channel of the city, the Dubai Water Canal.

The uniqueness of the site lies in the fact that in this place the canal significantly expands, forming a huge lagoon with piers, and there opens a great view of Burj Khalifa and Downtown. On the one side of the building there is the canal and a pedestrian promenade and on the other side a quiet servitude street.

The combination of magnificent views of the water and Downtown with the Burj Khalifa, the peacefulness of this meditative place and 10-minute proximity to the sea and the best restaurants are the unique competitive advantages of the location of **Eywa**.



عيفا
DUBAI

A new revolutionary generation of the XXI century buildings!

Imagine if the building were a living being, with its own energy system, the main and only task of which was to serve its inhabitants, connect them with the outside world, fill them with positive energy and help them to achieve their life goals protecting them from any harmful external influence!



BY R.EVOLUTION

Eywa is such a building, a building-guardian that creates new unique opportunities for development and inspires the lifestyle of its residents!

THE MAIN FACADE, PODIUM LEVELS

BY R.EVOLUTION

عاشق
DUBAI



THE MAIN FACADE, PODIUM LEVELS

عقوى
DUBAI

Architecture
of Eywa is a
symbiosis of the
symbolic Banyan
tree and the
inspiration of
the Hallelujah
mountains from
the movie
Avatar.



THE MAIN FACADE VIEW FROM THE CANAL

عَیْوَا
DUBAI

The Tree of Life

Open round columns, intertwining branches and trunks personify the **Banyan tree**, the “*world tree*” and the “*tree of life*”, whose branches support our world and whose roots spread down into the underworld, a symbol of the constantly renewing and reviving world, an inexhaustible source of life. It emerges from a seed, grows, creates its own world, its own life. It is a symbol of order and harmony.

Strikingly unique from your very first glimpse, Eywa instantly evokes a glorious Tree of Life. An organic canopy of branches, an enticing weave of roots, a living breathing building that represents timeless wisdom and enduring growth.



THE MAIN FACADE VIEW FROM THE CANAL

Eywa is a living breathing organism that interacts at all levels, through all the senses, both inside and outside.



Eywa
DUBAI

The wild luxury of the unique life experience!

In the XXI century the possession of a luxurious thing should become not an end in itself, but a means of developing yourself and your loved ones, in a sense, a manifesto of your vision of life.

Eywa is a choice that combines investments in the well-being of yourself and your loved ones, proximity to nature and the fullness of urban life in the heart of the city!



THE MAIN ENTRANCE

Eywa
DUBAI

Soft lines of nature

There are many spots to simply relax and enjoy nature in Eywa. The rustle of plants' leaves and the soothing music of waterfalls create the effect of being in the moment "here and now" as in the most important moment in our life.



BY R.EVOLUTION

Eywa is the luxury
of the unique
life experience!
We call it
“WILD LUXURY”!

THE GROUND FLOOR GARDEN

عشاق

DUBAI

Our Priorities are:
well-being and health,
energy efficiency and
sustainability, unity with
nature and community.



- Leed Platinum Certification
- Well Platinum Certification
- Wiredscore Platinum Certification
- HealthProTech System
- Use of the ancient knowledge of Vāstu-Śastras to enhance the well-being of residents
- Prime location
- Intellectual Development design approach
- State-of-art technologies



EYWA Platinum Certifications

We are proud to call EYWA's apartments 'branded' apartments in the true sense of this term.

Very many developers label their apartments as "branded". However, in our opinion 'branded apartments' are not those that merely have a brand name, 'branded apartments' are not only a luxurious eye candy, but also a symbol of the highest quality repeatedly confirmed by independent institutions, whose evidence cannot be forged.



LEED Certification (Leadership in Energy and Environmental Design) is the most widely used green building rating system in the world.

To achieve LEED certification, a project earns points by adhering to prerequisites and credits that address carbon, energy, water, waste, transportation, materials, health and indoor environmental quality. Projects go through a verification and review process by GBCI and are awarded points that correspond to a level of LEED certification: Certified (40-49 points), Silver (50-59 points), Gold (60-79 points) and Platinum (80+ points).

LEED certified buildings save money, improve efficiency, lower carbon emissions and create healthier places for people. LEED is a holistic system that doesn't simply focus on one element of a building such as energy, water or health, rather it looks at the big picture factoring in all of the critical elements that work together to create the best building possible. The goal of LEED is to create better buildings that:

- Reduce contribution to global climate change
- Enhance individual human health
- Protect and restore water resources
- Protect and enhance biodiversity and ecosystem services
- Promote sustainable and regenerative material cycles
- Enhance community quality of life.



WELL Certification is managed and administered by the International WELL Building Institute (IWBI), a public benefit corporation whose mission is to improve human health and wellbeing through the built environment. The WELL certification process involves a Documentation Review step similar to LEED certification, along with an on-site Performance Verification.

WELL Certified spaces and WELL Compliant core and shell developments can help create a built environment that improves the nutrition, fitness, mood, and sleep patterns.

The WELL Building Standard is all about monitoring the impact of the built environment on human health and wellness. It should be noted that WELL and LEED complement each other, or one can say that WELL takes off where LEED signs off. While LEED is more about becoming energy/resource efficient and saving on utility bills, WELL motivates you to want to better your surroundings to live a healthier lifestyle.

WELL Building Standard measures attributes of buildings that impact occupant health by looking at seven factors, or

Core Concepts:

Air - Polluted air is the number one environmental cause of premature mortality worldwide.. WELL establishes requirements in buildings that promote clean air and reduce or minimize the sources of indoor air pollution.

Water - WELL promotes safe and clean water through the implementation of proper filtration techniques and regular testing.

Nourishment - WELL requires the availability of fresh and wholesome food, limits highly-processed ingredients and supports mindful eating.

Light - WELL provides illumination guidelines that minimize disruption to the body's circadian system, enhance productivity and support good sleep quality.

Fitness - Physical inactivity is highly prevalent worldwide. WELL promotes the integration of physical activity into everyday life by providing opportunities and support for an active lifestyle and discouraging sedentary behaviors.

Comfort - WELL considers thermal, acoustic, ergonomic, and olfactory comfort to optimize indoor working environments.

Mind - Various environmental characteristics can have direct impacts on mental health and well-being, such as housing, crowding, noise, indoor air quality and light. WELL optimizes cognitive and emotional health through design, technology, and treatment strategies.

Spaces can become WELL certified by achieving a defined score in each of the above mentioned seven 'Core Concept' categories. WELL certification includes the submission of project documentation and onsite audit, which can result in the award of a Silver, Gold or Platinum standard.




WiredScore sets the global standard for technology in the built world through certification and education, evaluates, improves, benchmarks and promotes digital connectivity and smart technology in homes and offices on a global scale, ensuring that buildings provide a best-in-class infrastructure that businesses and individuals require to thrive.

WiredScore certification assesses, certifies, and promotes digital connectivity and smart technology in homes, offices, and neighborhoods globally.

WiredScore's highest-awarded mark proves that a building meets exceptional standards for the quality of its wired infrastructure, resilience, and wireless network. To achieve Platinum status, a building must achieve a predefined credit level or more during the assessment process.


7 Sense Special Approach Application in Eywa

Taste




Pleasant surprises for residents, such as specially selected exclusive kinds of coffee, some treats made from natural ingredients, in the Club House and the Main Hall. The Chef's Table at the restaurant at Eywa's Apartment, where you can pre-order your favorite dishes prepared to your taste and with ingredients purchased from your list.

Smell



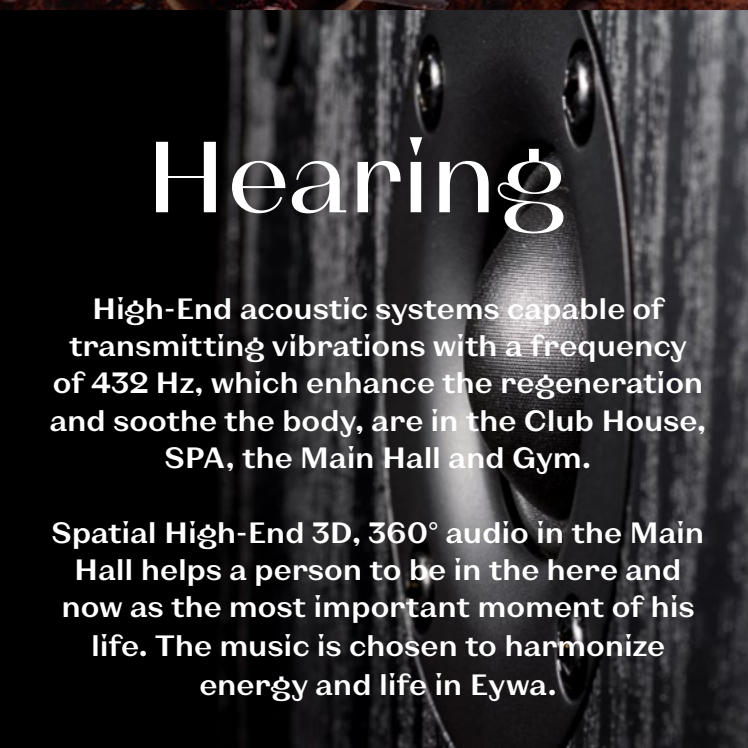
The air in the public places is saturated with the aroma of the Bali jungles (*ylang-ylang, jasmine, champak*) - a special fragrance created specifically for Eywa on the basis of essential oils. Blooming throughout the year trees and shrubs fill the air with a delicate aroma.

Touch



Natural rough surfaces both in interior design and in architecture, including crystals, which are recommended not only to admire, but also to touch.

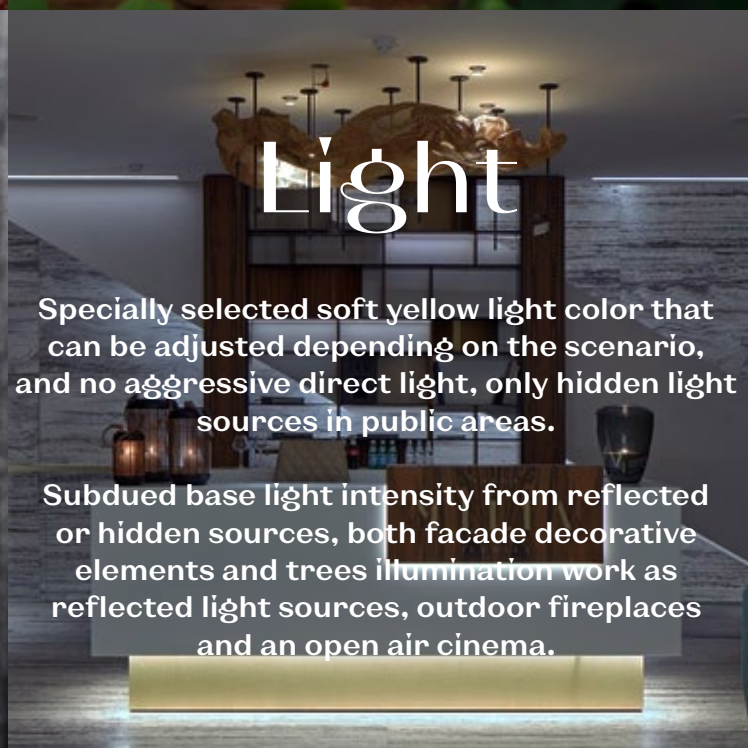
Hearing



High-End acoustic systems capable of transmitting vibrations with a frequency of 432 Hz, which enhance the regeneration and soothe the body, are in the Club House, SPA, the Main Hall and Gym.

Spatial High-End 3D, 360° audio in the Main Hall helps a person to be in the here and now as the most important moment of his life. The music is chosen to harmonize energy and life in Eywa.


Light



Specially selected soft yellow light color that can be adjusted depending on the scenario, and no aggressive direct light, only hidden light sources in public areas.

Subdued base light intensity from reflected or hidden sources, both facade decorative elements and trees illumination work as reflected light sources, outdoor fireplaces and an open air cinema.

Equilibrium



Flying art objects in the atrium of the Main Hall, flying trees on the facade, waterfalls - on the facade and in some apartments, flying dining areas on the terraces in the apartments with stunning views.

Aromas Of Nature

Specially selected year-round flowering shrubs and trees are planted on the territory and placed on private terraces and in public spaces to fill the air with a subtle and exquisite aroma of nature.



Jasmin



Champak



Adenium



Gardenia



Frangipani

All 5 elements of nature

- Stone, Fire, Tree, Water & Air,
help to create a healthy
holistic environment
for a successful person.

Air

Eywa is saturated with air thanks to its 7.5-meter ceilings in the main hall, 4.4-meter ceilings in the restaurant and other facilities and 3.4-meter ceilings in the apartments, special air purification filters; specially selected aromas of natural oils sprayed in public places; air conditioning

Water

Stunning waterfall at the entrance and in some apartments, 4 swimming pools on the first floor terrace, a 2 x 3 m swimming pool in each apartment, water structuring filters with crystals

Fire

An open fire in the main hall, and a totem place for tribal gatherings by an open fire on the first floor terrace of - 1400-1500 sqm, in the restaurant and in the Club House.

Tree

The building - a Banyan tree. Flying trees and flourishing gardens in each apartment. A plethora of green plants and trees in the public areas inside and outside.

Stone

Floors, natural stone wall cladding inside and outside, a 105 m high energy pyramid of crystals throughout the building, special stones and crystal gardens in public areas, a floating Japanese stone garden.



عنا
DUBAI

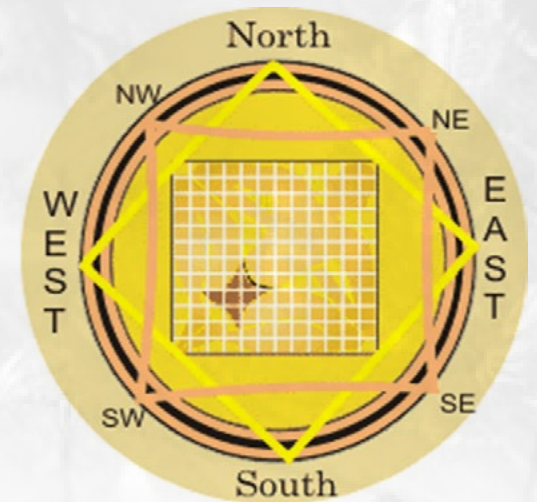
Ancient knowlege

For the first time in the last 2000 years in the history of modern development, using the knowledge of the heritage of mankind, including experiences of Vāstu-Śastras, and the ancient knowledge of the human energy structure, the house is transformed into a welfare energy generator to maintain and improve physical and intellectual health with the help of the system of crystals and other means installed in the house, in its frame and design from the foundation to the roof.

Eywa
DUBAI

BY R.EVOLUTION

Eywa is not only a place for a happy life, but also a place to make clean and well-considered decisions and solutions in life and business. All questions and all answers are already present in the universe, and the task of the Eywa energy system is to enable you to connect to this space of endless possibilities.



This system allows:

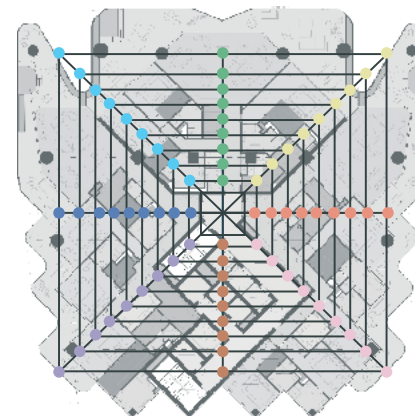
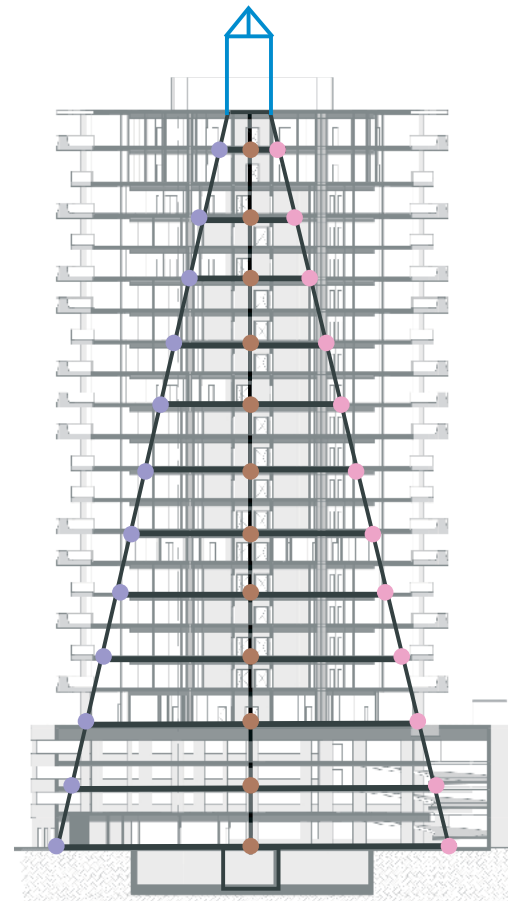
- to fill the building with energy,
- to clean the space from the dark manifestations of human nature,
- to reduce conflict,
- to increase concentration and ability to solve mental tasks,
- to harmonize the space for a happy life,
- to promote the development of mental and physical abilities, especially in children.



The Energy Stone System

According to the recommendations of the specialists of Vāstu-Śastras 162 crystals corresponding to cardinal directions are placed throughout the building to filter and purify negative, aggressive energy, to attract and enhance positive energy, to harmonise the space for a happy, healthy and wealthy life!

The main energy system of Eywa is composed of 108 crystals. The arrangement of 96 stones (8 on each floor of the building starting with the basement to the upper roof terrace) forms a pyramid at the top of which there is a huge rock crystal with Sri Yantra carved on top of it. Huge 11 crystal geodes are placed on the first floor in Eywa's Apartment No 1 and in the Main Hall, and 54 crystals enhancing the functions of each space - in public premises.



Location Of Stones

- The North-West** - selenite
- The North** - green jade, malachite, green quartz
- The North-East** - yellow amber, yellow tourmaline
- The West** - black agate, black onyx, labrador, lapis lazuli
- The South** - red agate, red jasper, cornelian
- The East** - red tourmaline, red quartz, red amber
- The South-East** - rock crystal, rose quartz, white quartz
- The South-West** - amethyst
- The central part** is left free for the flow of divine energy.

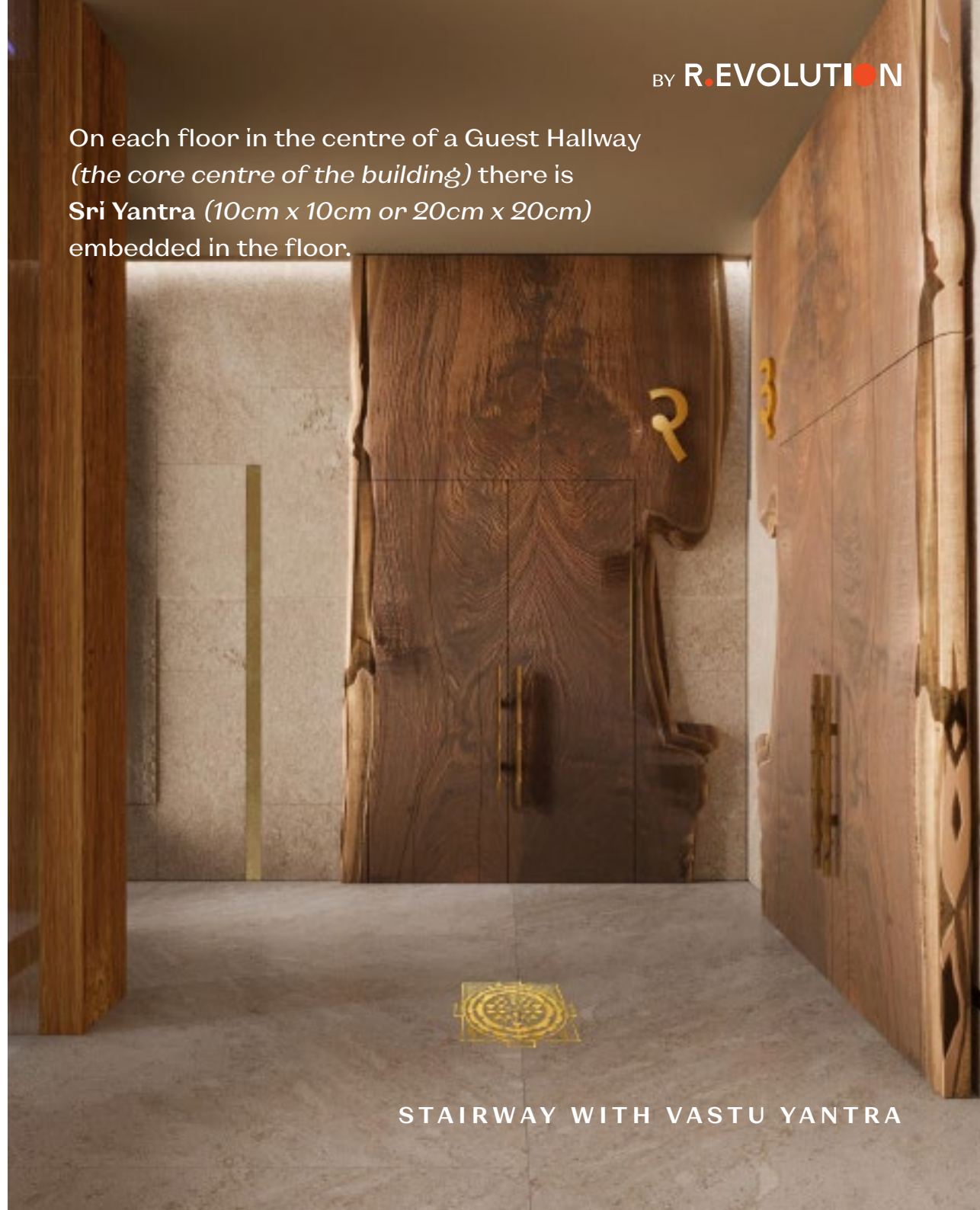
Ancient knowlege & modern technologies

To balance the energy of space and correct defects at the energy level: to correct disturbances, filter and shield negative energies and generate and amplify positive ones, **Vāstu-Śastras** have been using Yantras for thousands of years.

Yantras are composed of complex geometric elements that form a single whole to become a source of subtle favourable vibrations, and when properly placed affect the quality of vital energy.

From the basement to the upper roof terrace, on every floor, we place special yantras according to the recommendations of Vāstu-Śastras specialists to filter and harmonize energies, thereby ensuring the influx of positive divine energy into our home.

On each floor in the centre of a Guest Hallway (the core centre of the building) there is Sri Yantra (10cm x 10cm or 20cm x 20cm) embedded in the floor.



STAIRWAY WITH VASTU YANTRA

Eywa
DUBAI

'Wild Luxury' Of Eywa Apartments

Eywa is a choice that combines proximity to nature and the fullness of urban life in the heart of the city!

For R.evolution, Eywa is a living being filled with the positive energy of its creators and future inhabitants. Rituality in the service and implementation of the philosophy and mission of the company in Eywa will create unique opportunities in the lives of its future inhabitants.



Eyeza

DUBAI

Waterfalls

Each apartment is equipped with a private swimming pool on a spacious terrace, a garden with trees and greenery and a waterfall (on the upper floors, on the lower floors as an option), which the residents can turn on and off and enjoy the soothing sound of falling water and stunning views at the canal, the Downtown and Burj Khalifa.



BY R.EVOLUTION

THE FACADE WATERFALL

“Look deep into nature, and then you will understand everything better.”

- ALBERT EINSTEIN

BY R.EVOLUTION

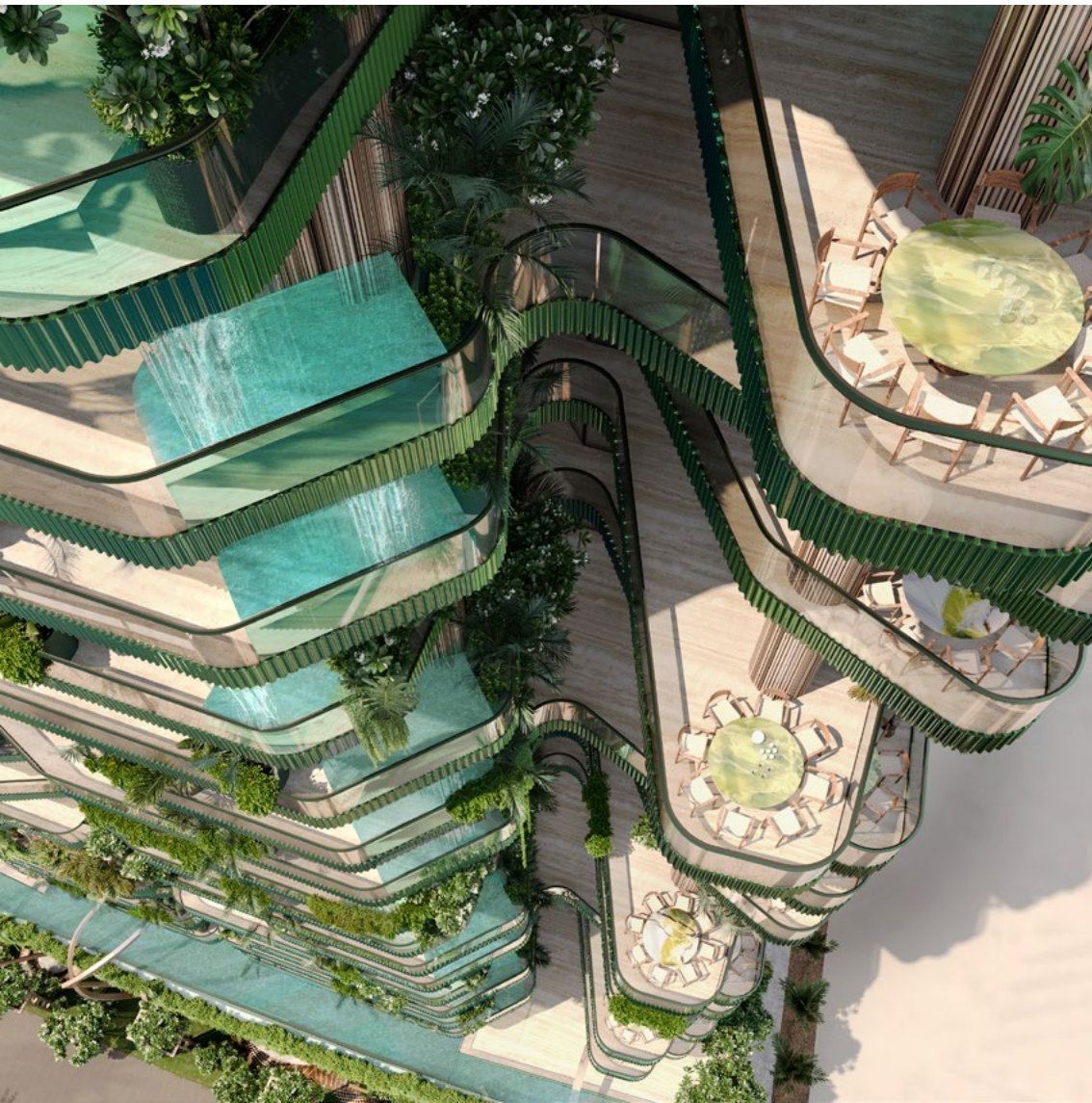
Stunning nest-inspired design of a tea house with breathtaking views over Dubai skyline. The place for the best moments with family, meditation and goal setting and making the right decisions.

UPPER FLOOR APARTMENT TERRACES

Apartment Terraces



A soaring dining area and hammocks
on the terraces in the apartments.



AN APARTMENT TERRACE

Flying Trees

Each apartment will have 2-3 flying trees and luxurious greenery on the terrace.

Using an automatic irrigation and fertilizer supply system, a service company will centrally handle all maintenance of the trees in the amount necessary for the plants.



An Apartment Living Room



An Apartment Living Room



An Apartment Show Kitchen



An Apartment Terrace



An Apartment Bedroom



An Apartment Bedroom



An Apartment Bathroom



Eywa
DUBAI

Eywa is a - well-being generator!

Vāstu-Śastras helps us make our lives better and enhances wealth, health, prosperity and happiness.

A house in which energy and all elements of nature are balanced fills a person with harmony and positive energy, contributing to the happiness, well-being and success of its inhabitants.

To harmonize our home, we began to apply the knowledge of *Vāstu-Śastras* even at the stage of laying the foundation.



BY R.EVOLUTION

THE FACADE WATERFALL

The Main Entrance

A stunning waterfall near the entrance, lots of greenery in the lobby, and a floating 2m x 4m mirror help to block the aggressive energy of the south from entering the building.

There is a huge black tourmaline in the western part of the hall.



- Powerful protective function (it is called an energy shield);
- Detox from negative thoughts and energy as an environment space, and the owners and all who interact with it;
- Strong anti-stress and relaxing effect; Maximum grounding.

Black Tourmaline





Emira
DUBAI

THE MAIN LOBBY HALL

The Main Hall

Crossing the threshold of Eywa, you find yourself in another reality, a reality filled with love for all living beings and nature.

An open fire is in the middle of the Main Hall, on the right and on the left in between the woody “trunks” of the banyan tree and on its branches there is a library. Several groups of soft furniture and cosy armchairs are there to enjoy your time with a book or relax while listening to enveloping music chosen to harmonize energy and life in Eywa.

Spatial High-End 3D, 360° audio helps a person to be in the here and now as the most important moment of his life. The air is saturated with the aroma of the Bali jungles (*ylang-ylang, jasmine, champac*) - a special fragrance created specifically for Eywa on the basis of essential oils.

In the evenings visual images from special projectors enliven the 7.5-meter walls with bookshelves and banyan trees in the main hall.



BY R.EVOLUTION

The atmosphere of relaxation and unity with nature is designed to unite the inhabitants of Eywa, to help them interconnect their inner world and the world around them.



Eywa

DUBAI BY REVOLUTION

The Northern Entrance

The Northern Entrance to the building has a plethora of light and air, many flourishing flowers and bushes and is decorated with a huge green jade and/or malachite.



Green Jade

- means happy, wealthy and healthy life;
- brings luck;
- has hot nature;
- has powerful masculine energy;



Malachite

- provides the plethora of energy;
- protects the body from evil spirits;
- blows away and clears a clouded mind, allowing it to have a clear vision;
- guards against impurities;
- is a spiritual intensifier.



Eywa

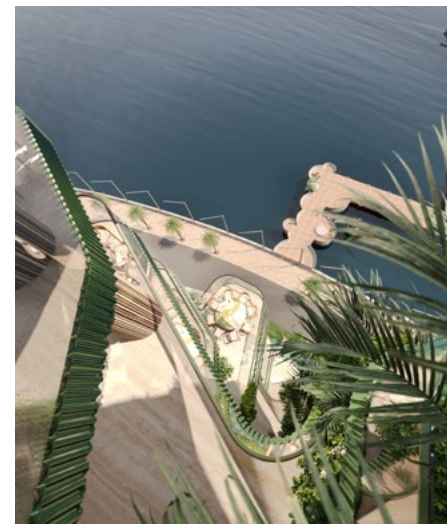
DUBAI

The motto of Eywa:

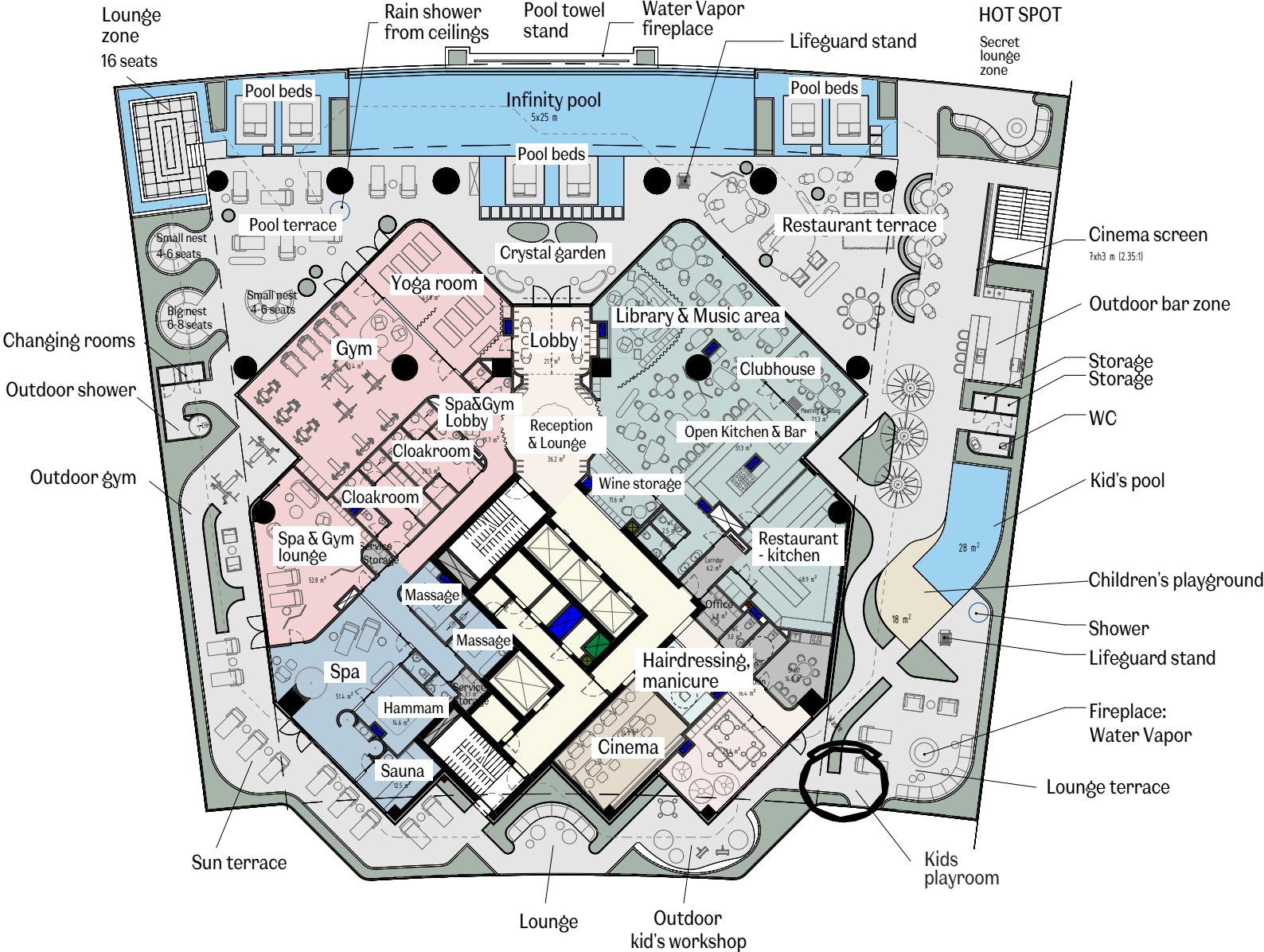
*“I see you!
I hear you!
I feel you!”.*

Our Eywa has everything you need for every day - a restaurant and a winery, spa, a library, a hairdresser, gym, an open-air and indoor cinema, a children’s club and a playground, office and conference rooms, a 5G network inside the building, a 25 m infinity -pool, “floating” art objects in the atrium, “flying” trees and waterfalls, 24/7 concierge service and only for our residents a motor boat at the pier.

Without being distracted by routine daily activities, you will be able to enjoy life and achieve success devoting much more time to yourself, your family and your business.



The Plan Of the Community Floor



Eywa Community Terraces

4 swimming pools, tribal meeting places with open fire, children's playground, open-air cinema, sunbathing areas and a meditation room are organized according to the recommendations of the specialists of **Vastu Sastra**.

BY



In the north and north-west of the open-air terrace will be placed amazing fireplaces (*backlit water vapor - complete imitation of fire*) surrounded by water to enjoy stunning views of Burj-Khalifa in the evening.

Community Floor

Eywa invites!

The design of SPA and gym, ClubHouse and open terraces of common use is united by one idea: The entire floor is a spacious, homely and cozy apartment for a large family of all Eywa residents.

Be at home in Apartment No 1!



Community Floor Terraces

According to the recommendations of the specialists of *Vāstu-Śāstras* there will be placed either huge geodes of particular stones or planted crystal gardens in special places to balance and harmonise the energy and well-being of the home and its inhabitants.

Selenit

- brings clarity and vision;
- is highly spiritual;
- dissolves obstacles and blocks;
- helps shed anxiety and worry;
- radiates peace and provides protection for energetic fields and space.



Community Floor Terraces



Community Floor Terraces



Community Floor Terraces



Community Floor Terraces



Community Floor Terraces



Community Floor Terraces



عَیْوَا
DUBAI

Club House & Restaurant

A place for the residents of Eywa to socialize, a place where you can invite your friends, having compiled with the personal menu from your own or ordered high-quality products beforehand. This place will have everything the way you like it and the personnel will know about all your preferences.

Winery

A special technologically correct storage for wine that you choose yourself.

In the Club-House there is an opportunity to play billiards, board games or just relax in the bar.



BY R.EVOLUTION



CLUB HOUSE AND RESTAURANT



CLUB HOUSE AND RESTAURANT



CLUB HOUSE AND RESTAURANT, OPEN KITCHEN

Offices

Equipped to the highest standards of the IT industry, 3 multifunctional rooms can be used as office-conference rooms, as well as rooms for private meetings or dinners.

Stones of the mental trinity



Fluorite

- bring high concentration;
- encourage to express and declare oneself;
- help to have an unconventional view of the situation;
- sharpen the mind;
- help to find solutions in challenging situations;
- inspire confidence.



Pyrite



Calcite



Spa

Relax in our state-of-the-art SPA with ice and salt rooms, sauna and Turkish bath, multiple jacuzzis and swimming pools. Specially equipped rooms for individual massages and facial and body treatments will also be available upon request.



- nurtures calmness and contemplation;
- helps with sleep;
- eases anxiety;
- provides balance and patience;
- works on emotional and spiritual levels;
- boosts the immune system;
- sweeps away negativity.

Amethyst



Rose Quartz

- encourages self-love;
- deepens all kinds of relationships;
- helps heal emotional wounds;
- encourages connection.



The best stones to be used in the area of relaxation and rest are rose quartz and amethyst.





Open-Air & Indoor Cinemas



There are two cinemas at your disposal: an indoor one for 12 people and an open-air one on an open terrace with a beautiful view of the canal, Downtown and Burj Khalifa.

Library in the Main Hall & Club House

VIDEO

Emira
DUBAI

A real library with 2500 books is being created as a collection of books and knowledge recommended for the preservation of humanity and for humanity.

عشاق
DUBAI

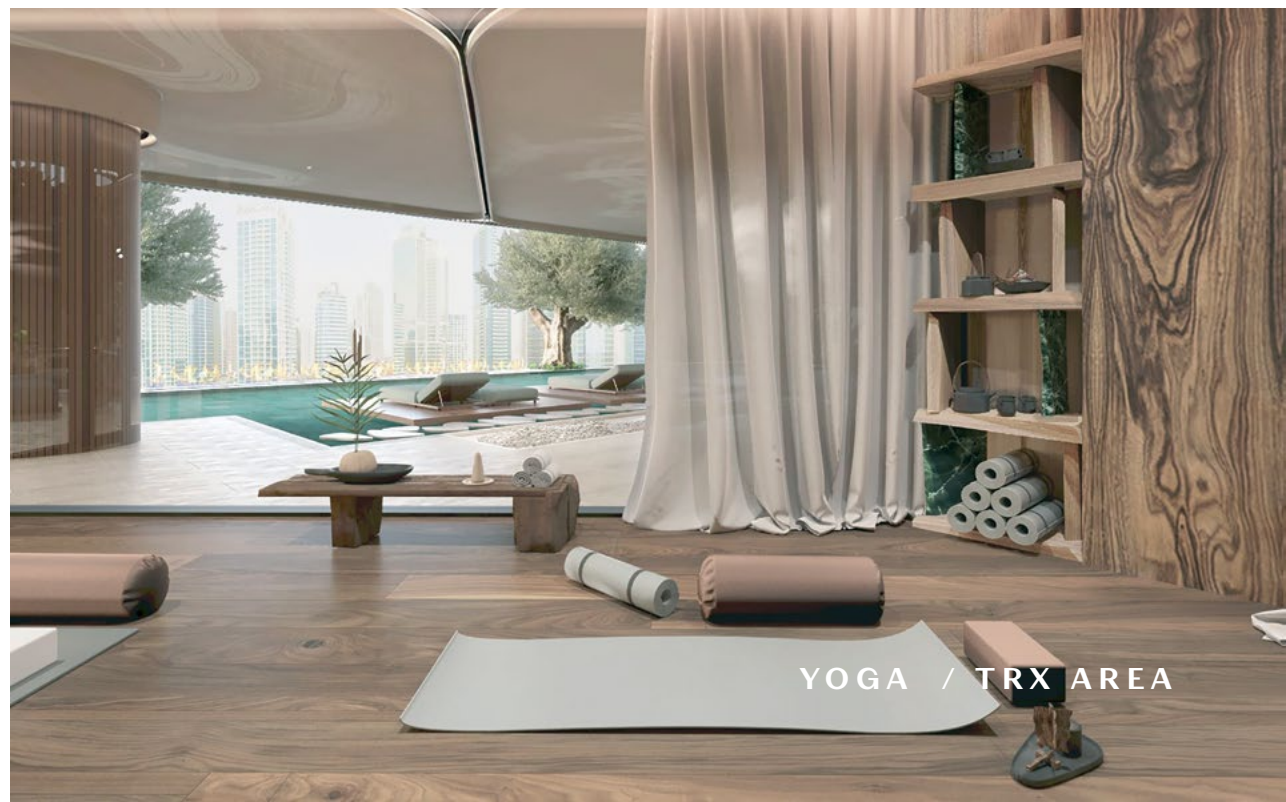
Fitness Club & Yoga Studio

Our fitness club has everything you need: a gym, equipped with the latest technology, a complete set of treadmills, bikes and multistations from Techno-Gym to work out your physical body from Cardio to Body level.

A special room for gymnastics, yoga, TRX and CrossFit classes.



GYM AREA



YOGA / TRX AREA



Children's Playground & A Playroom

On the terrace near the Club House there is a children's playground with sun protection and a playroom with many toys and games for children of all ages. Available upon request, a highly professional animation team will never let your children get bored in our playground, equipped to suit the needs and wishes of each child.

There will be the possibility of organizing various work classes and facilities to educate and entertain your children.



PLAYGROUND

Children's Playroom



Parking

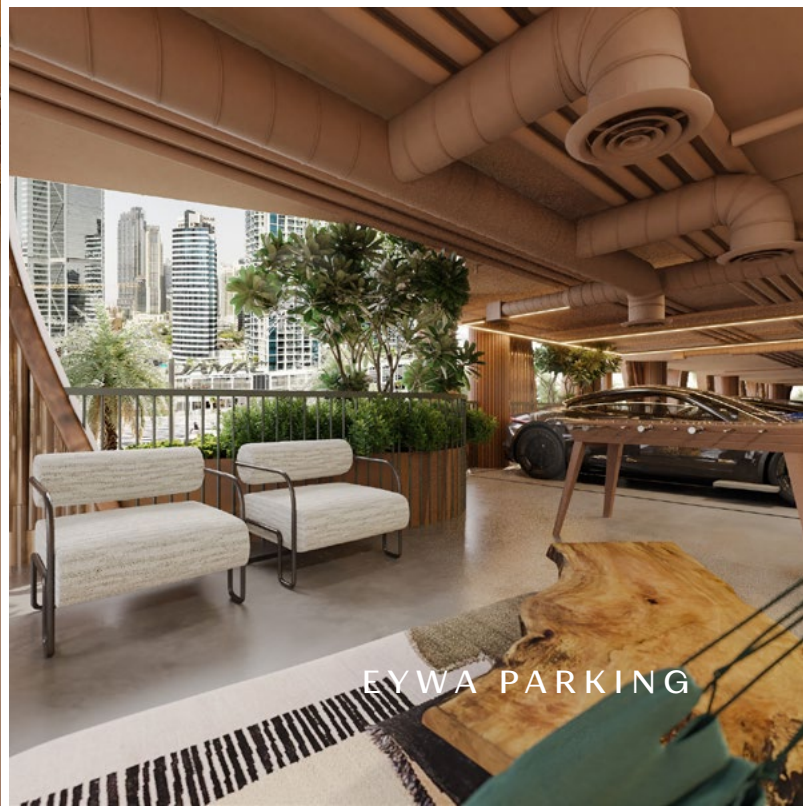
BY R.EVOLUTION



The 4-level car park is a symbiosis of nature and homely atmosphere, like the home of Ikrans from the movie 'Avatar'.

Views of the surrounding greenery and water, groups of home furniture placed in the parking lot create a feeling that is completely non-standard for this type of space.

EYWA PARKING



Pier

The motorboat will take the resident to any of the 3 beach clubs that Eywa has agreements with.

Inspiration



عاشق

DUBAI

A beautiful promenade with a wonderful view is ideal for both morning jogging and evening walks along the water canal.

BY REVOLUTION



PROMENADE

Crystal Planting & Soaring Japanese Stone Garden

Crystal planting is the placing of a crystal, or a group of crystals, into an environment to negate negative energies, clear karmic imprints or cleanse, realign and strengthen an area or habitat, thus bringing about healing to the Earth and her inhabitants.

Each and every connection empowers the energy of the cairn and also brings peace and healing at a personal level.



EYWA COMMUNITY FLOOR TERRACES





Health is a human right and our number one priority.

The most modern energy efficiency solutions for buildings will be used. Especially in the HVAC segments.

Prioritizing health and safety in a post-COVID-19 world, R.evolution has developed a specialized health protection program: **HealthProTech**.

HealthProTech is a set of measures intended to keep a high healthy level of the building residents and to minimize any possibility of a respiratory infection outbreak in our specific environment.

- Lifts controlled with personal electronic keys to minimize physical contact;
- Smartphone App for door access and lift control;
- Special air filters (in the main ventilation system) that purify, fill with oxygen and ionize the air;
- And special water filters that clean from chemical and other additives and impurities and enrich with necessary substances and minerals, bringing water to the level of its ideal composition, thus solving one of the main problems of Dubai - the quality of air and water; and special filters with crystals that structure the water. <https://alphaomegawater.org/>

Energy Efficiency & Sustainability

The water already used by residents will be collected, purified and used for watering plants and various technical needs.

- Heat pumps will be used to cool the air in buildings. This will help to significantly reduce energy consumption, thereby reducing air pollution and carbon dioxide emissions into the atmosphere.
- Solar panels will be installed on all roof surfaces and some parts of the façade elements. The energy generated by solar panels will provide a significant portion of the electricity needs in the building. These solutions optimize both financial costs and create additional profitability for the project.
- Additional thermal insulation and temperature-retaining facade glass system will be used to meet the LEED and WELL Platinum requirements.

The Plans of Apartments

4 apartments per floor

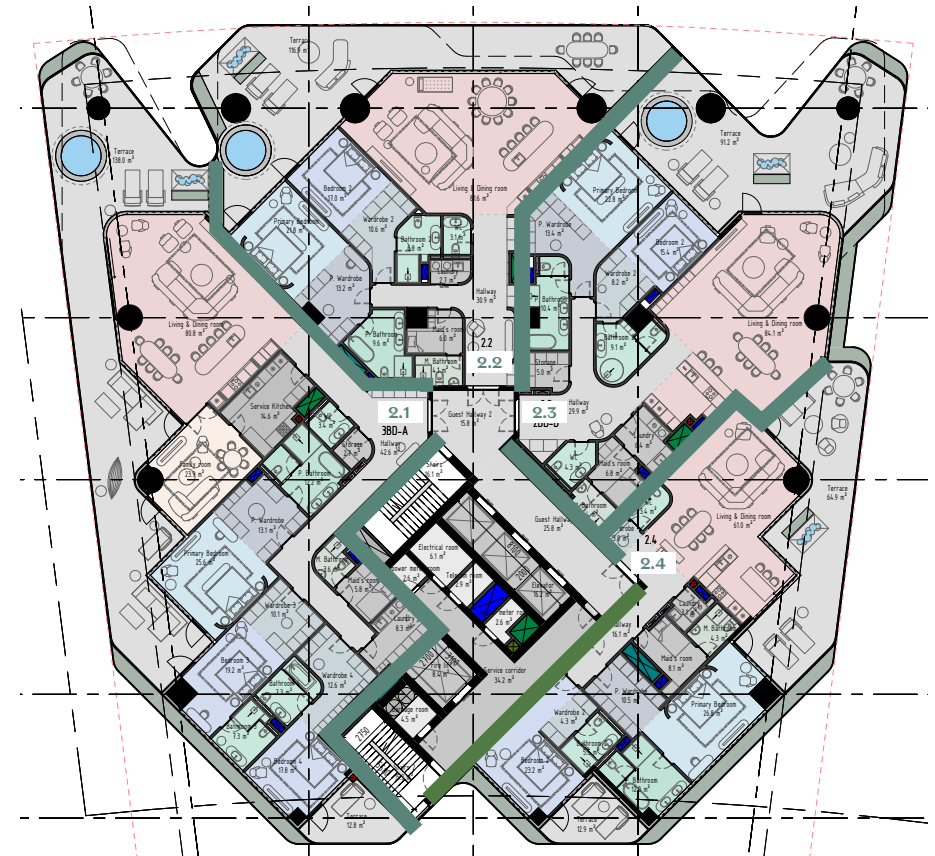
Floorplate levels 2 & 3

Experience luxury living on a pinnacle of exclusivity, just 48 iconic residences with exquisite details and a sumptuous material palette.

Apartment Features:

- ✓ Luxurious finishing with natural materials;
- ✓ Mesmerising views of a huge lagoon of the Dubai Water Canal and skyline;
- ✓ A terrace with a swimming pool in each apartment;
- ✓ A personal waterfall in selected apartments;
- ✓ Branded show kitchens from the best manufacturers;
- ✓ In-built exclusive wardrobes;
- ✓ Exquisite furnished bathrooms;
- ✓ Choice of 3 packages of luxury designer furniture;*
- ✓ The opportunity to choose furniture personally.*
- ✓ Recommendations of Vastu Shastra specialists on the design and selection of crystals in an apartment to improve the well-being of the family;*
- ✓ Terrace gardening, including trees. Centralized control of watering and care;
- ✓ Special centralized filters with water structuring crystals. <https://alphaomegawater.org/>.

*at extra charge.



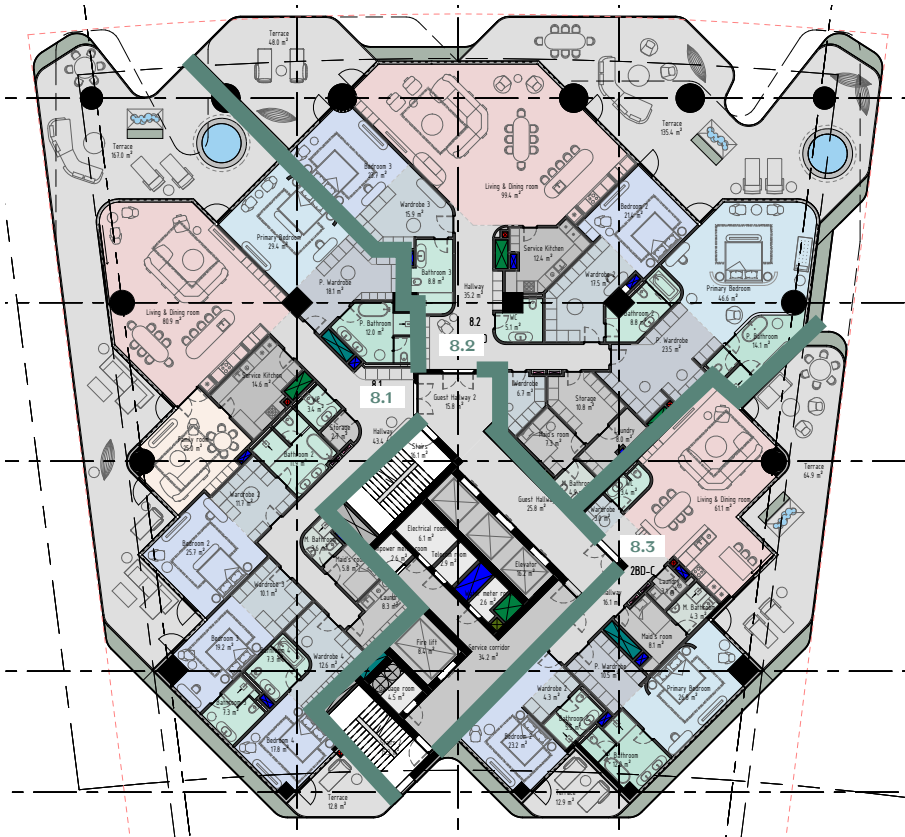
Apartment	Internal area	Terraces	Total
2.1	343 m ²	154 m ²	497 m ²
2.2	227 m ²	121 m ²	348 m ²
2.3	242 m ²	95 m ²	337 m ²
2.4	205 m ²	79 m ²	284 m ²

عقود

DUBAI

3 apartments per floor

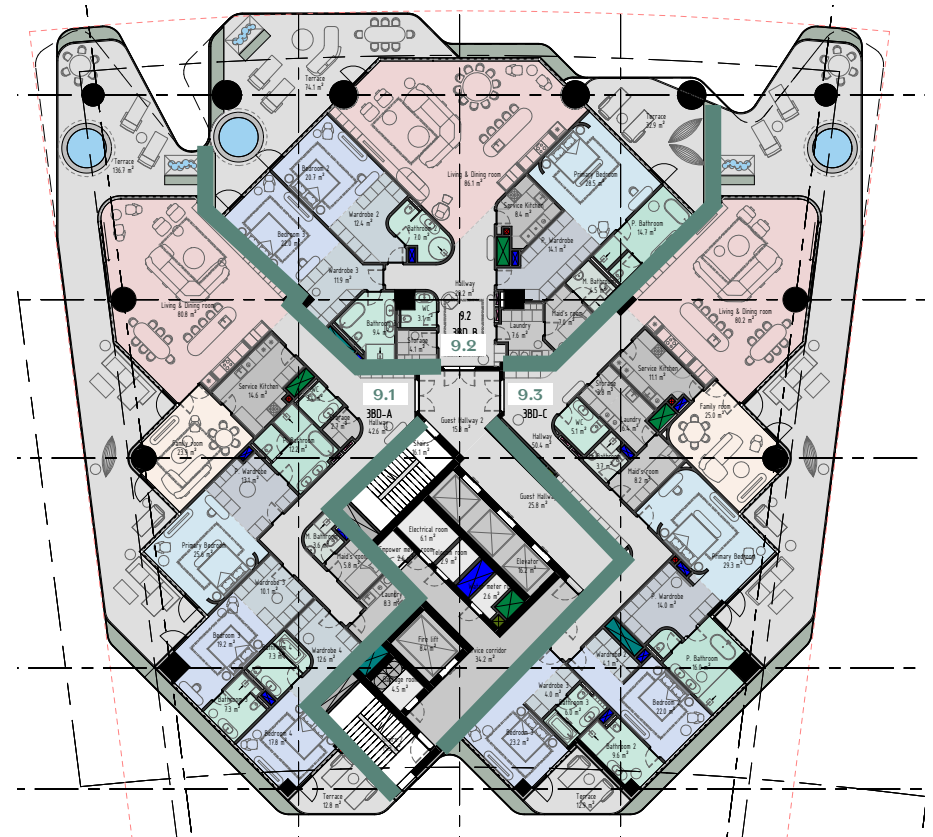
Floorplate levels 4, 5, 6, 7, 8



Apartment	Internal area	Terraces	Total
8.1	409 m ²	185 m ²	594 m ²
8.2	403 m ²	189 m ²	592 m ²
8.3	205 m ²	79 m ²	284 m ²

3 apartments per floor

Floorplate levels 9, 10, 11, 12, 13



Apartment	Internal area	Terraces	Total
9.1	342 m ²	152 m ²	494 m ²
9.2	317 m ²	112 m ²	429 m ²
9.4	257 m ²	157 m ²	414 m ²

Eyeza

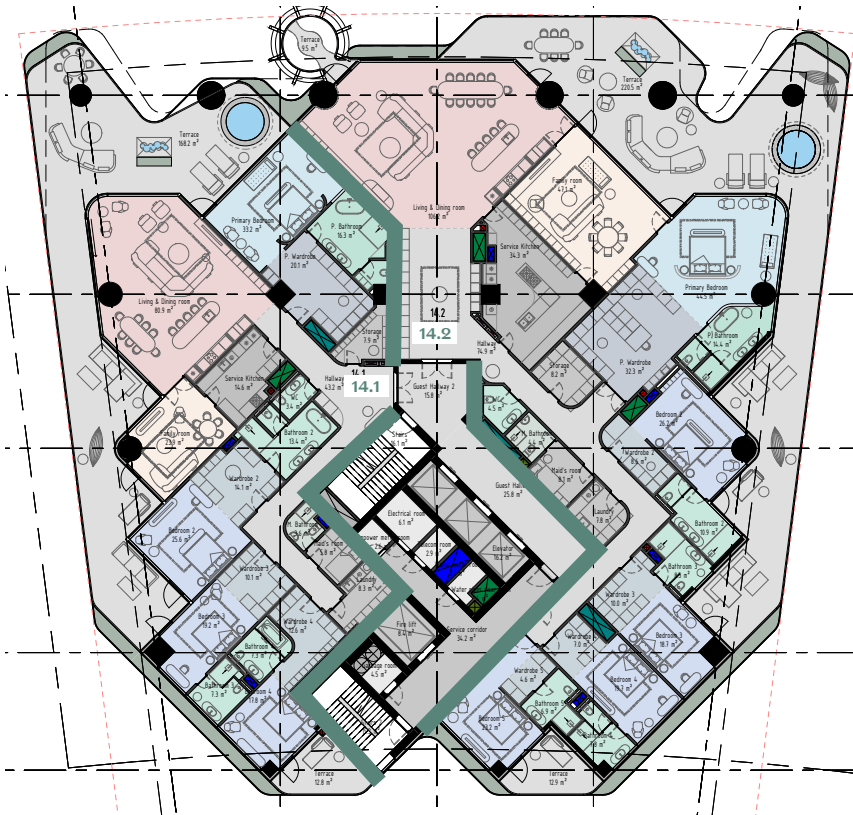
DUBAI

2 apartments per floor

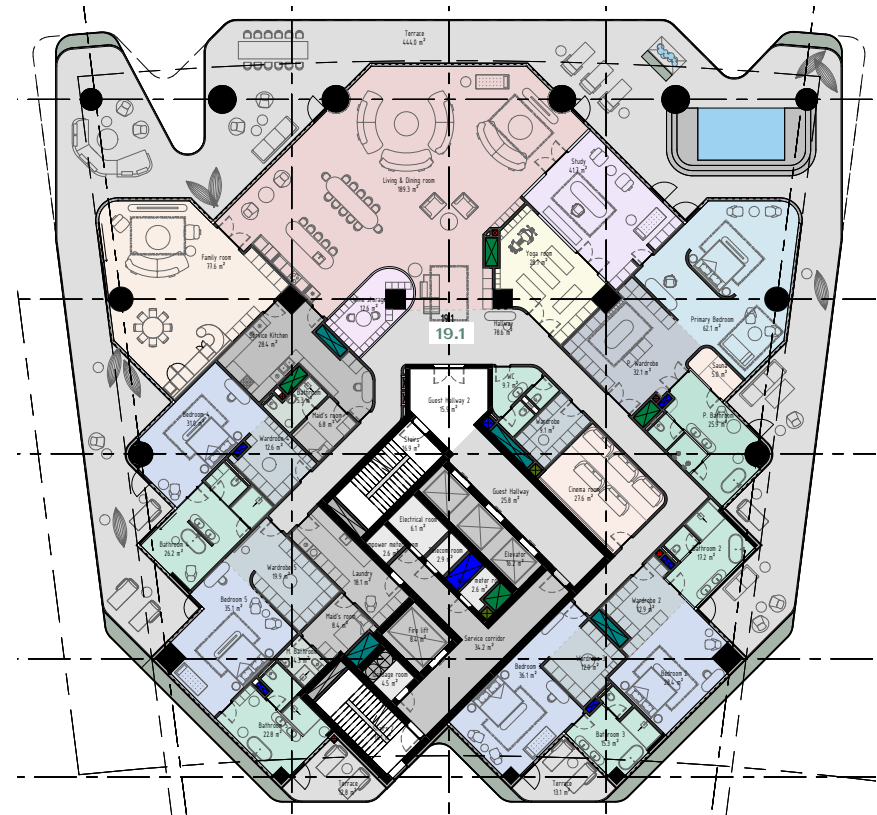
Floorplate levels 14, 15, 16, 17

Penthouse

Floorplate levels 18 & 19



Apartment	Internal area	Terraces	Total
14.1	428 m ²	185 m ²	613 m ²
14.2	591 m ²	250 m ²	841 m ²



Apartment	Internal area	Terraces	Total
19.1	1020 m ²	482 m ²	1502 m ²

R.EVOLUTION

REAL ESTATE DEVELOPMENT

- Founded in 1999
- DD & Development > 250,000 sqm
- In Development - 100,000sqm
- Largest Single Development Project - EUR 270 million
- Number of employees >60
- **Headquarters:**
Dubai, The UAE

Offices:

Rīga, Latvia
Barcelona, Spain
Berlin, Germany

International Award Winners



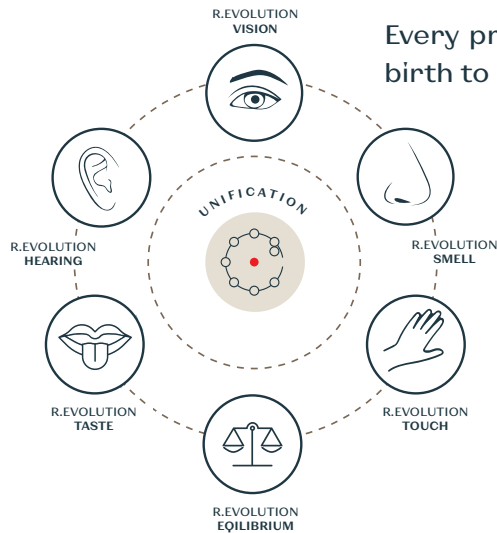
Mission

To create a universe filled with awareness and gratitude, joy and an opportunity for development and enhancement of the potential of people and companies, using ancient knowledge of human nature and the latest achievements of the modern technocratic world.

HOFT, INNER YARD, FAÇADE OF A NEW-BUILD
DEVELOPED BY R.EVOLUTION

Special Approach

In **5** dimensions with **7** senses

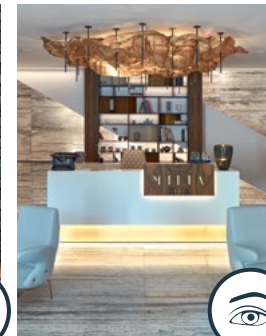
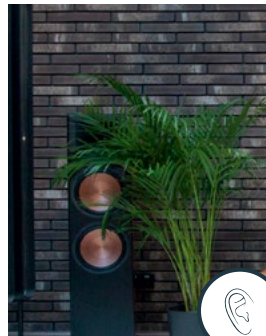
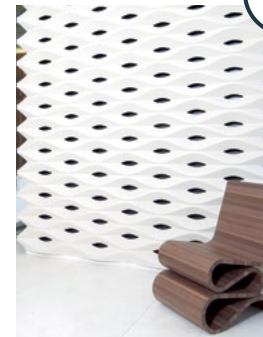
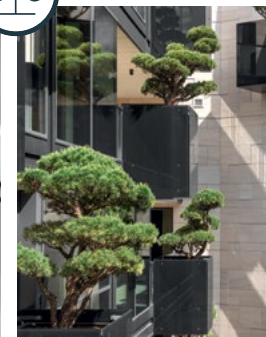
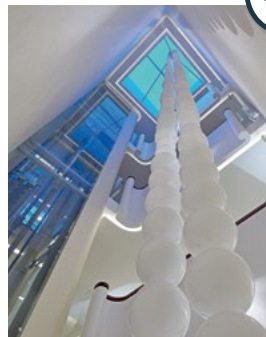
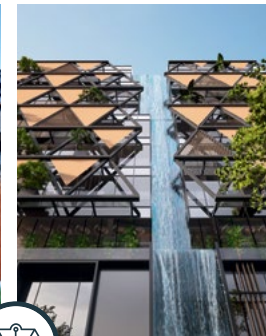
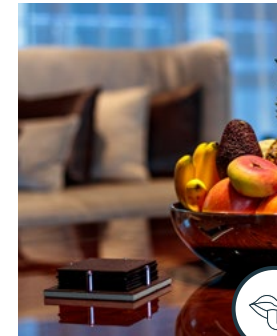


Every project of ours has its own unique details that give birth to its character and promote its profitability.

Both inside and outside of our buildings we work on the sensorial experience directly influencing the main physical senses:

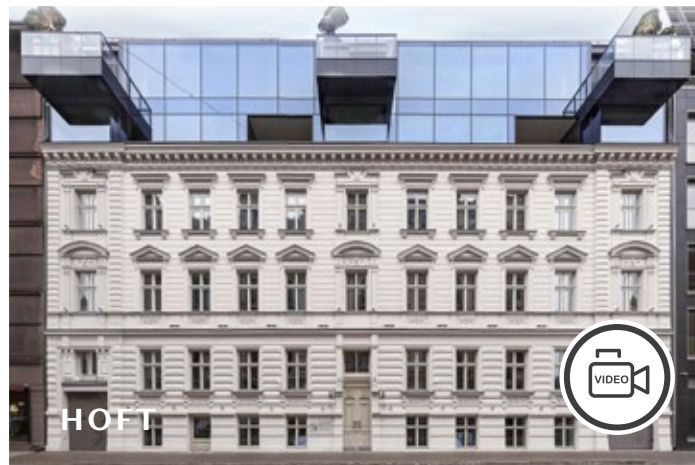
UNIFICATION - a unique sense of R.evolution that helps us to unify all 6 senses and 5 elements of nature into a sacred single unique integrity in relation to each construction with which R.evolution works.

As a rule, development takes place in 4 dimensions - 3 physical and 1 time. Developing architectural and ideologically relevant and in demand projects, R.evolution creates in 5 dimensions - we add our personal 5th Dimension, which explains the philosophy of the approach of R.evolution to the restoration of existing buildings and the creation of new ones.



The 5th Dimension is a Dimension beyond Time and Space; it is an illusory dimension created by everyone in their mind, it is 'Maya' - an illusion based on personal assessments and perceptions of life, desires and dreams, imagination and views. It is everywhere. To feel it, to subtly understand how one or another target audience thinks and feels here and there is vitally important. This understanding helps us to create a property that will be in demand and will contribute to the development of both the architecture of the city and the artistic taste of its inhabitants giving future generations a worthy example.

Developed by R.EVOLUTION



Developed by R.EVOLUTION

