



VERDANA III





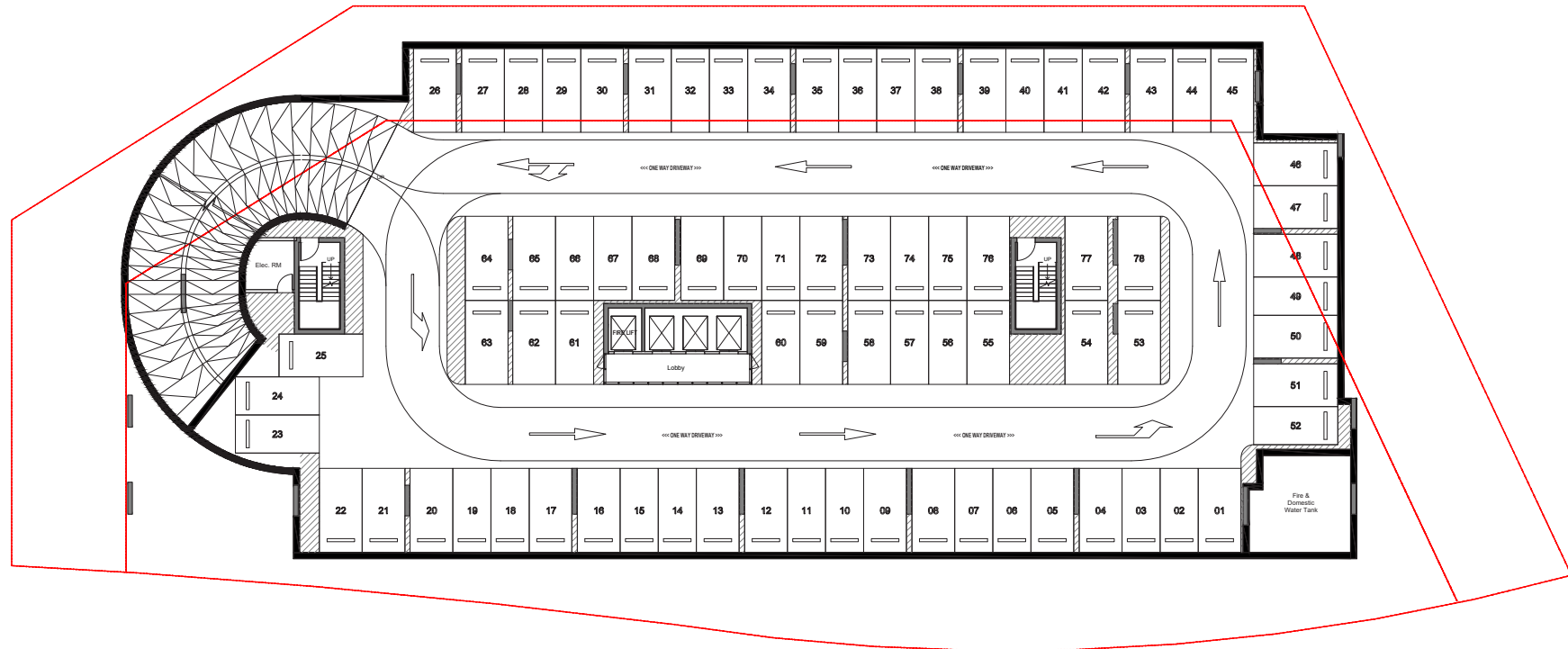
# FLOOR PLANS

All drawings and dimensions are approximate. Drawings are not to scale and are subject to change without notice. The developer reserves the right to make revisions. The units are measured at typical floors in the building and columns may vary in size depending on the floor level. The furnishing and accessories shown are for representation only. The availability, length and width of the balcony varies depending on which floor and which orientation the unit is located within the building. There will be slight differences in the internal areas between the same unit types depending on the shaft sizes that go through the units.

# VERDANA

## BASEMENT 02

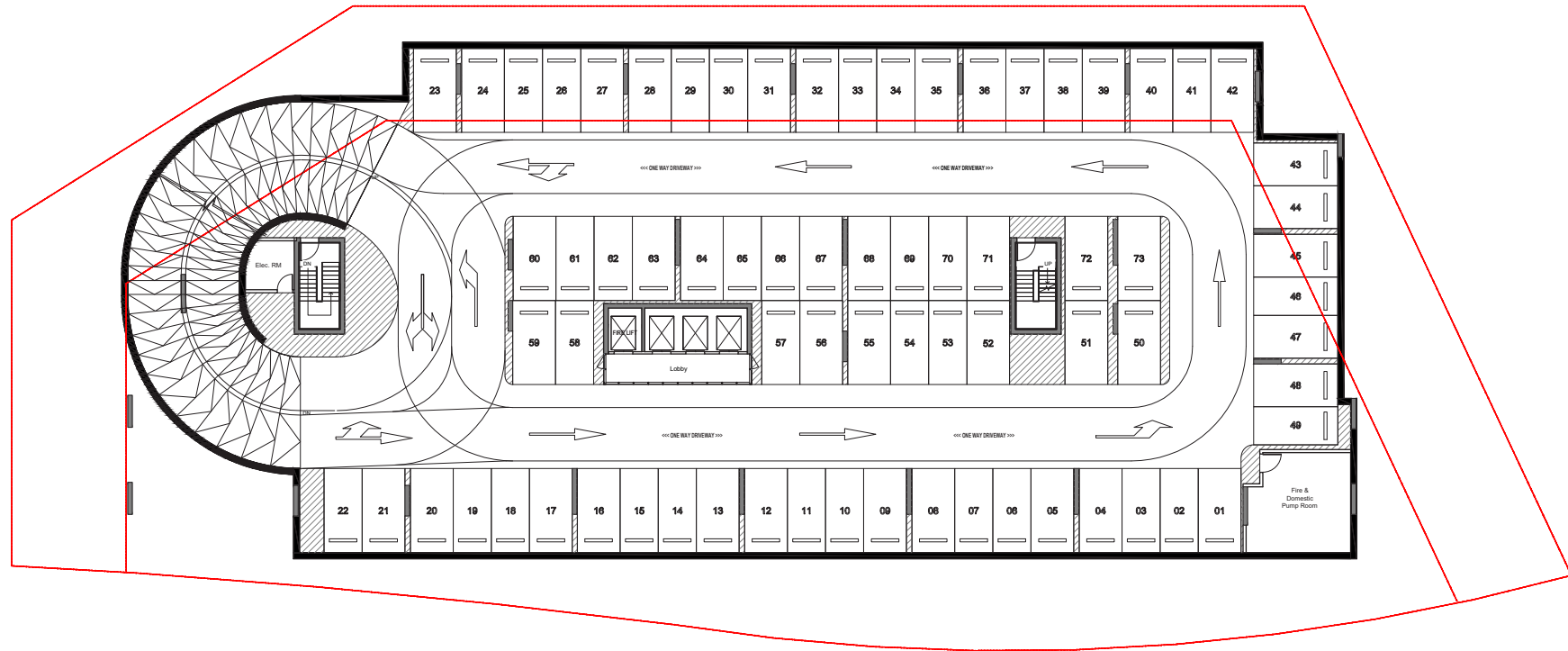
● J1B ● 1B ● 2B ● 3B ● 4B



# VERDANA

## BASEMENT 01

- J1B
- 1B
- 2B
- 3B
- 4B



# VERDANA

## GROUND FLOOR

- J1B
- 1B
- 2B
- 3B
- 4B



# VERDANA

## PODIUM FLOOR

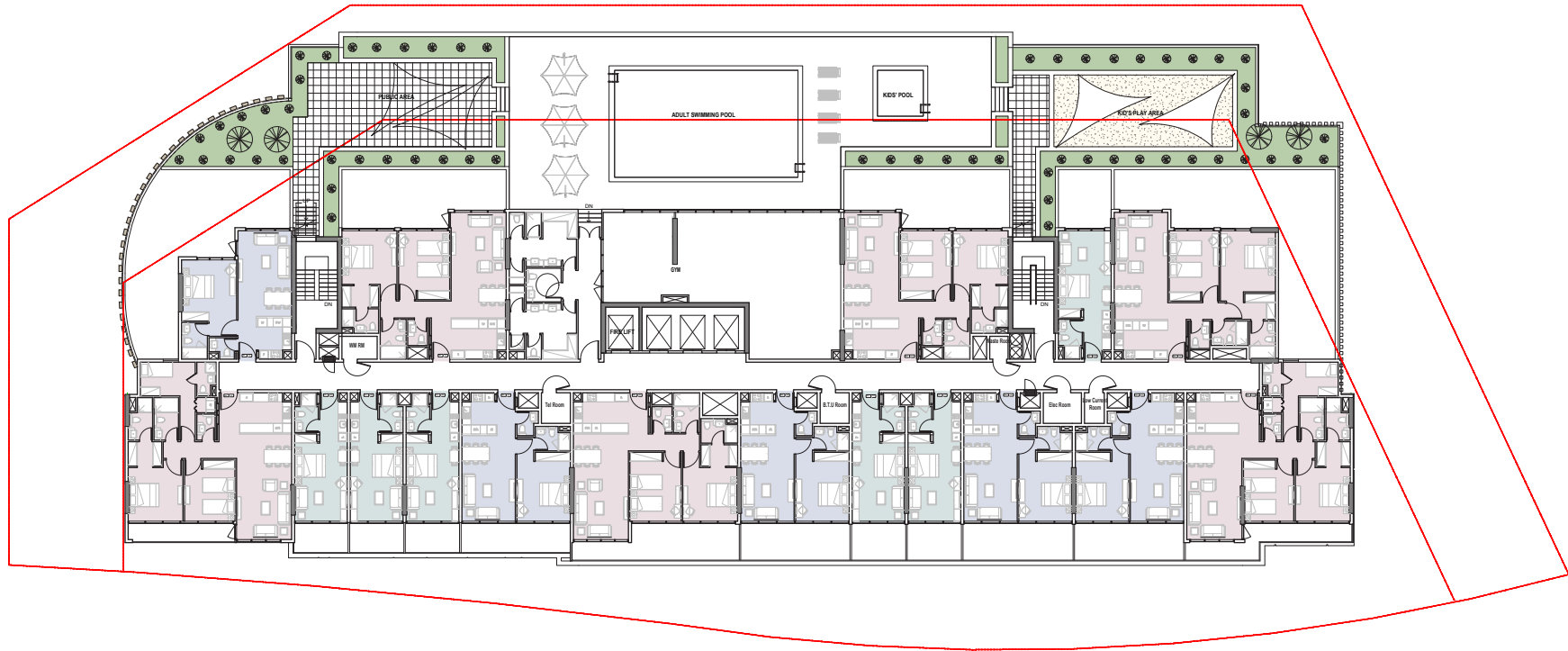
- J1B
- 1B
- 2B
- 3B
- 4B



# VERDANA

## FIRST FLOOR

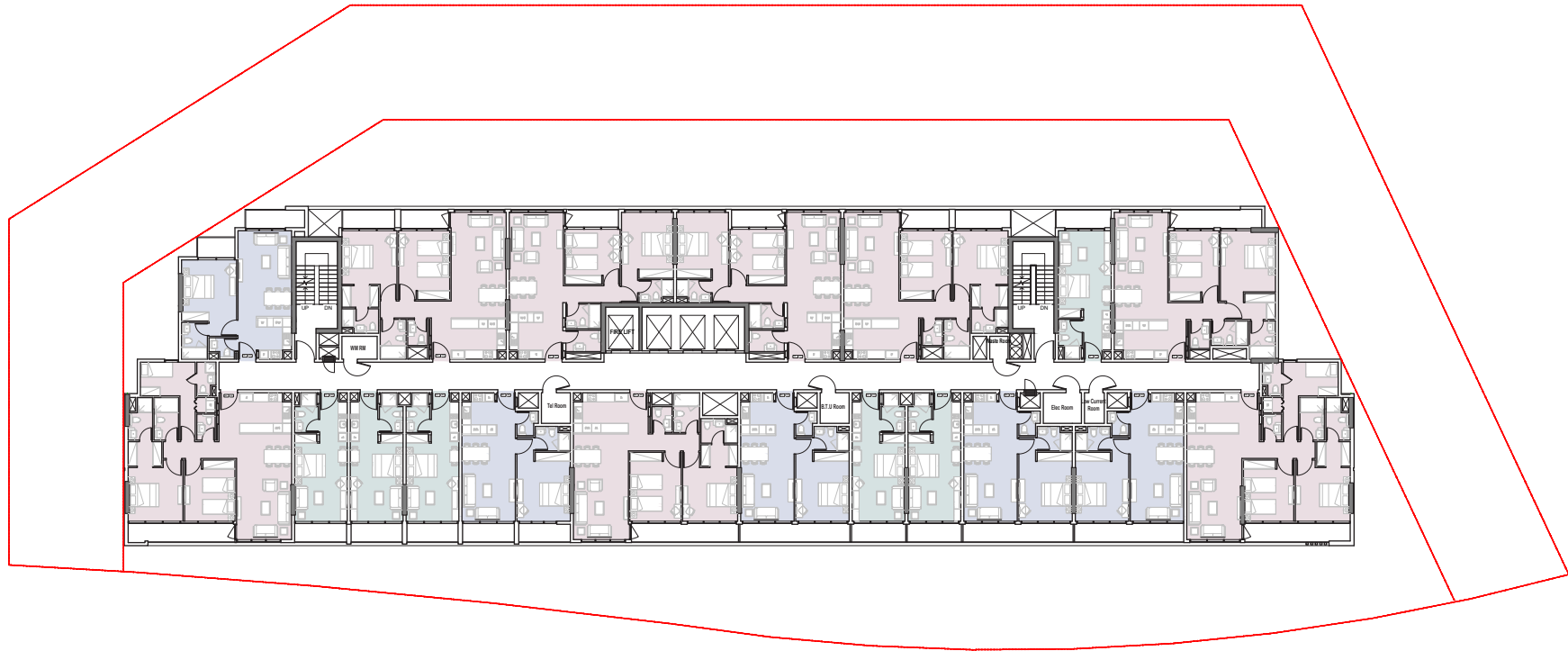
● J1B ● 1B ● 2B ● 3B ● 4B



# VERDANA

## 2<sup>nd</sup> TO 8<sup>th</sup> & 10<sup>th</sup> FLOOR

● J1B ● 1B ● 2B ● 3B ● 4B





# VERDANA

## 9<sup>th</sup> FLOOR

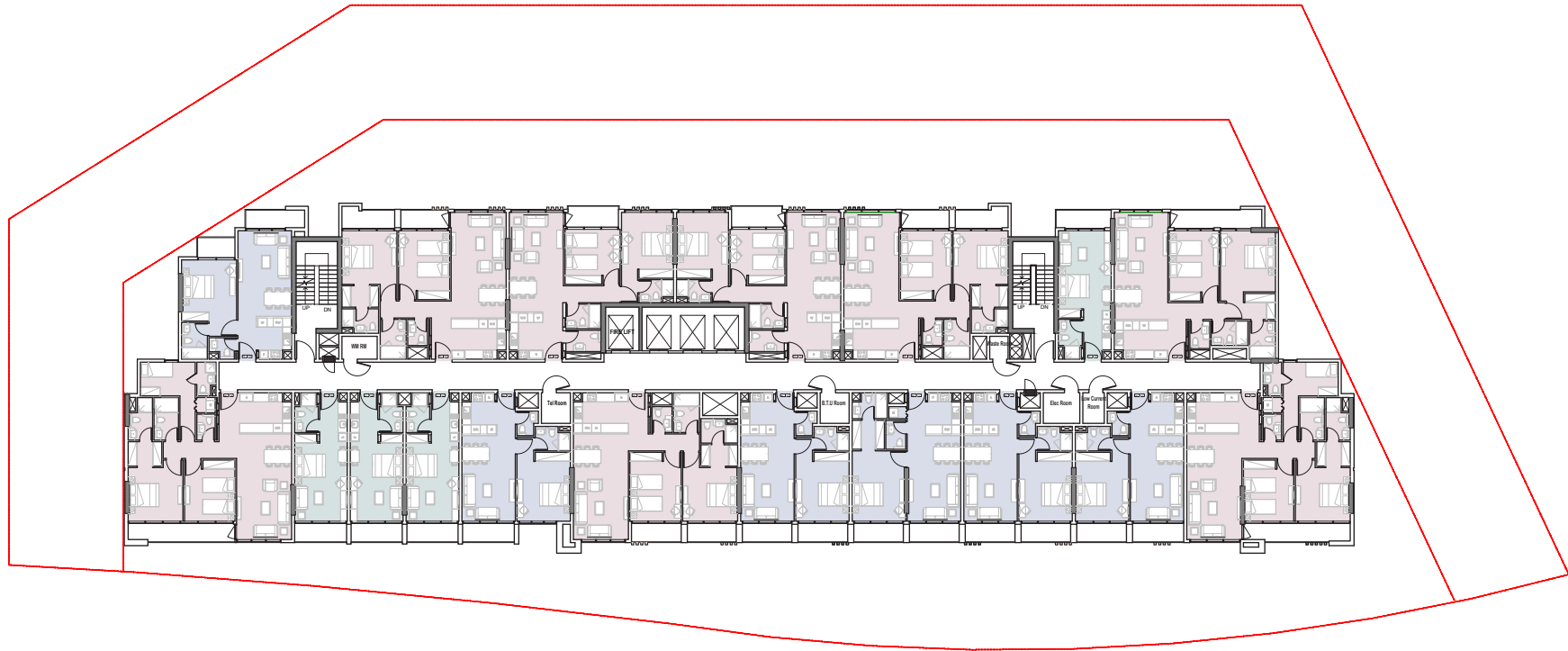
● J1B ● 1B ● 2B ● 3B ● 4B

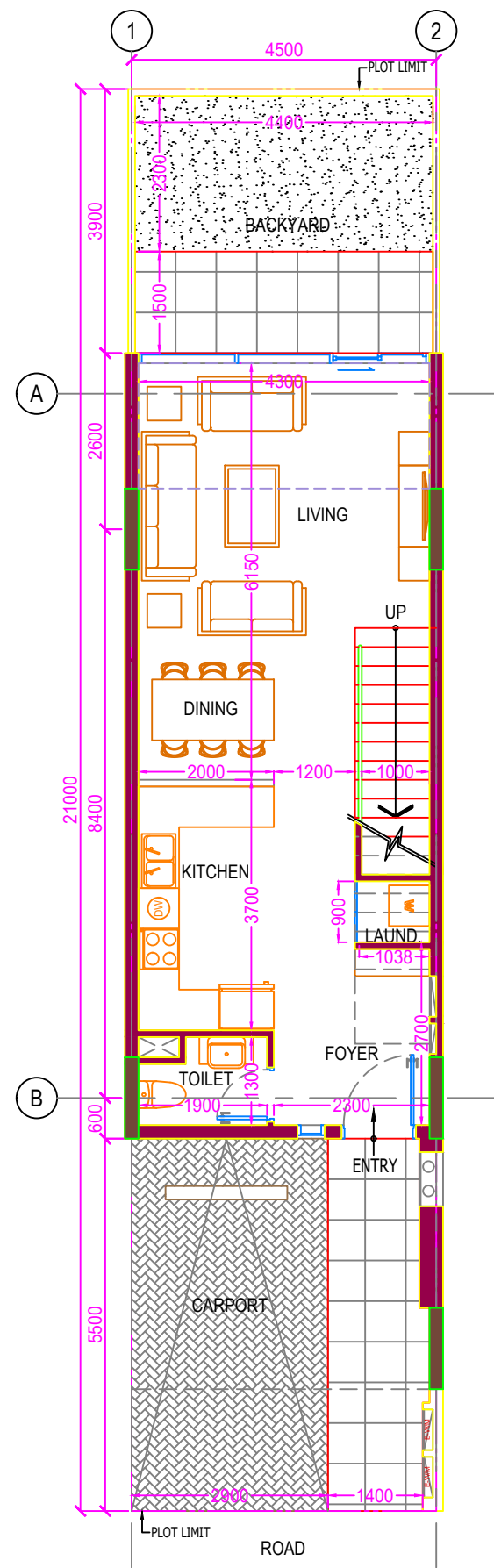


# VERDANA

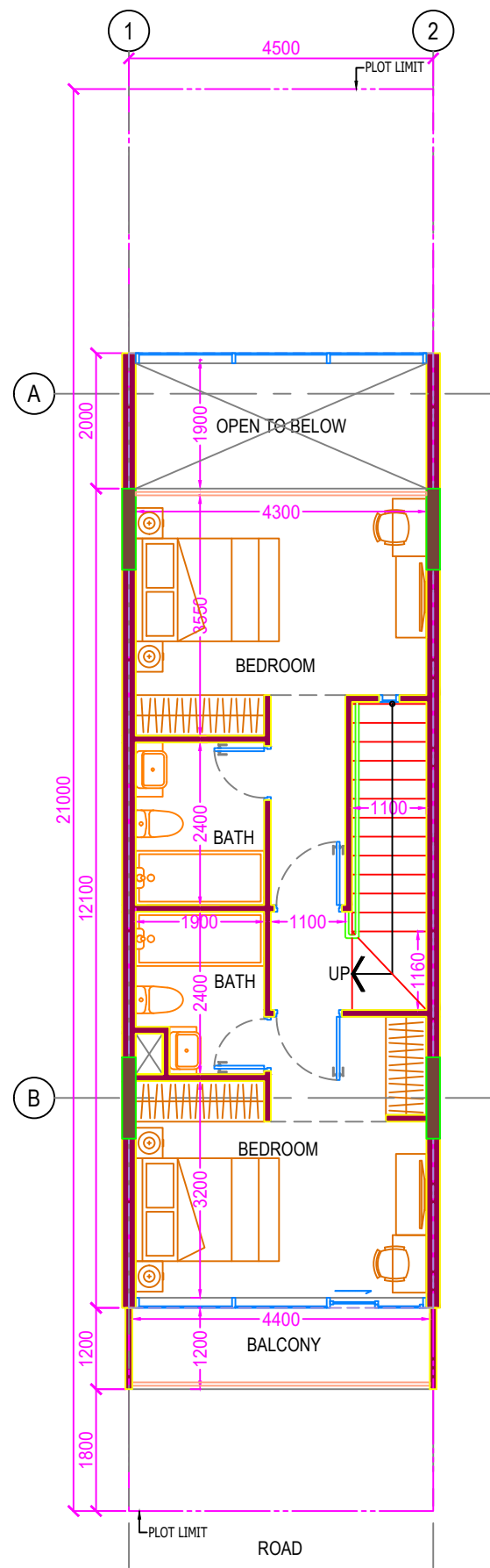
## 11<sup>th</sup> TO 15<sup>th</sup> FLOOR

● J1B ● 1B ● 2B ● 3B ● 4B

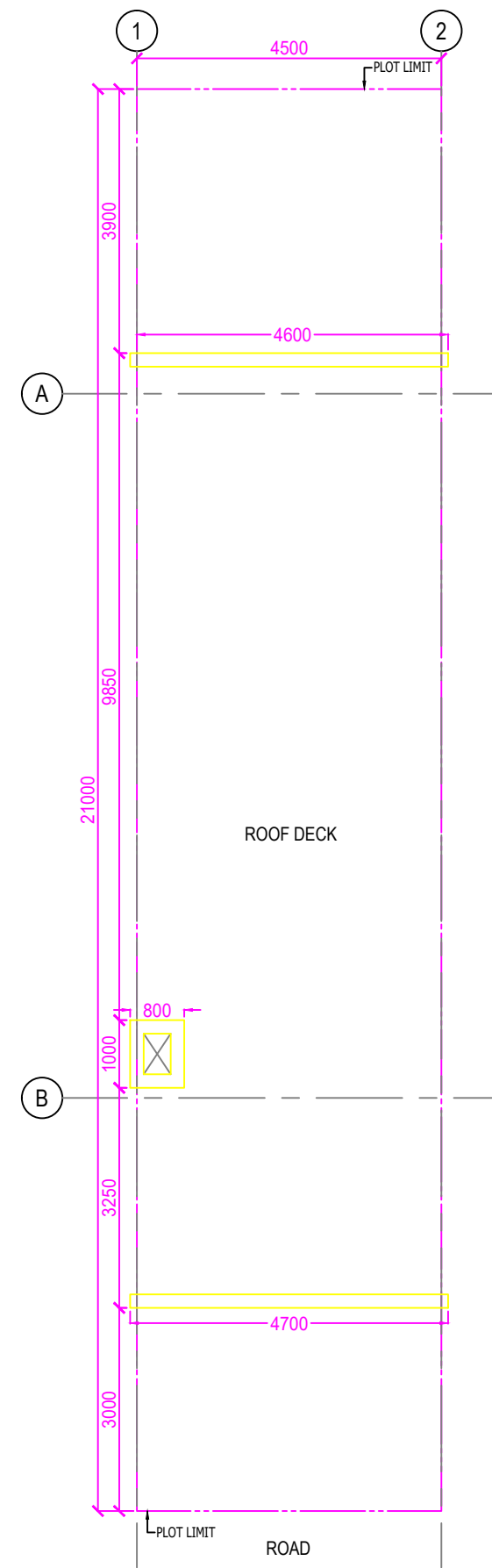




GROUND FLOOR

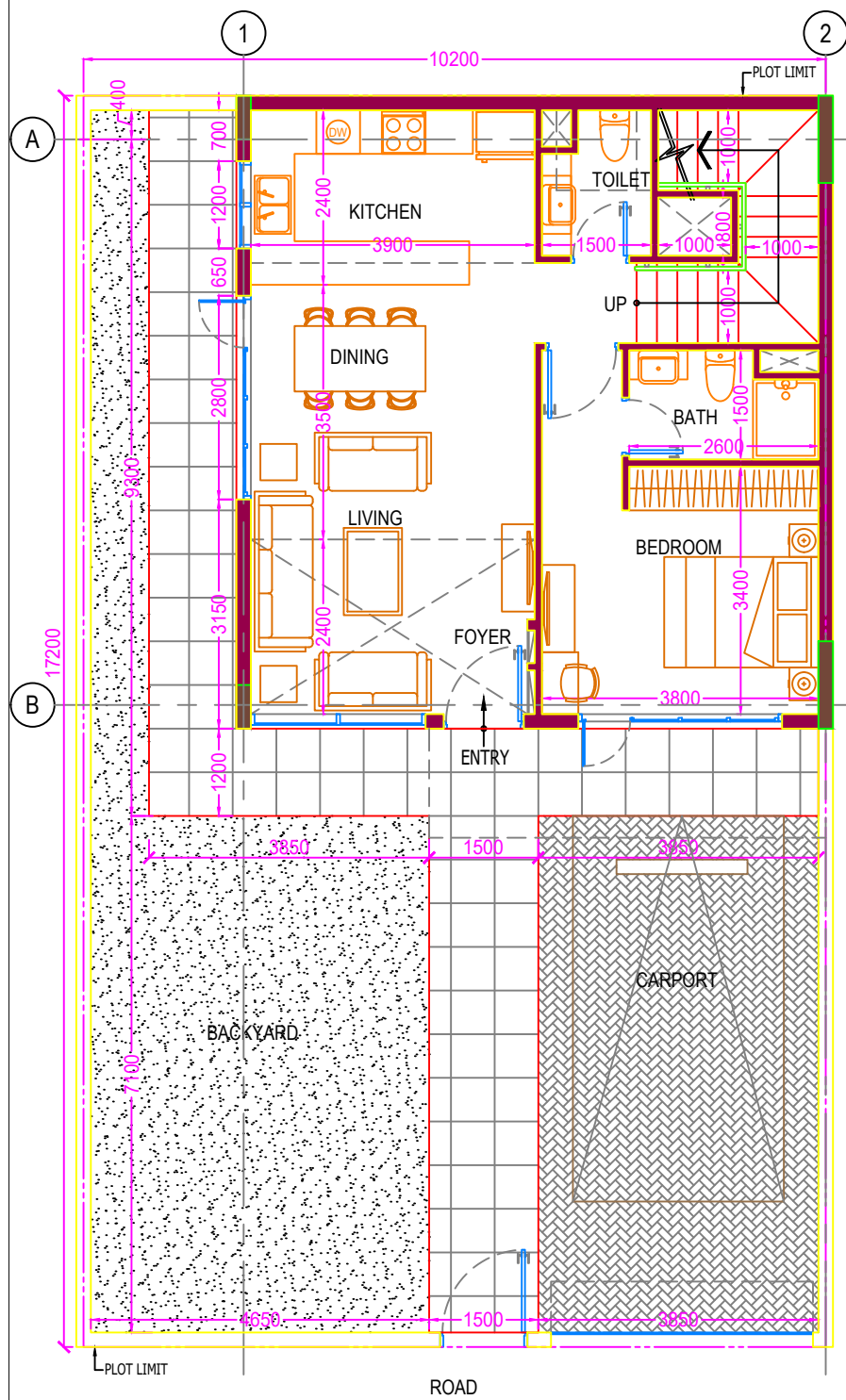


1ST FLOOR

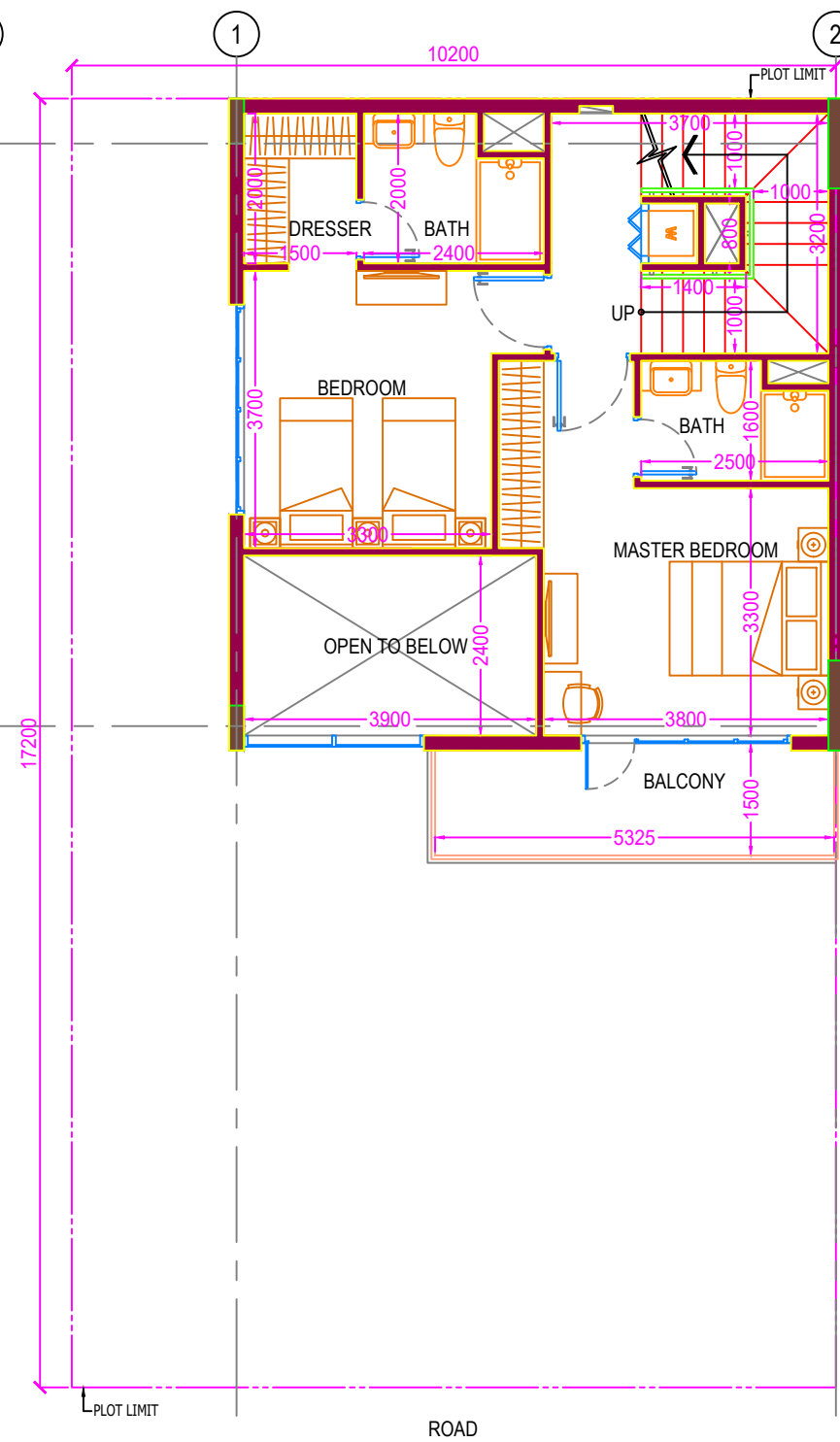


ROOF FLOOR

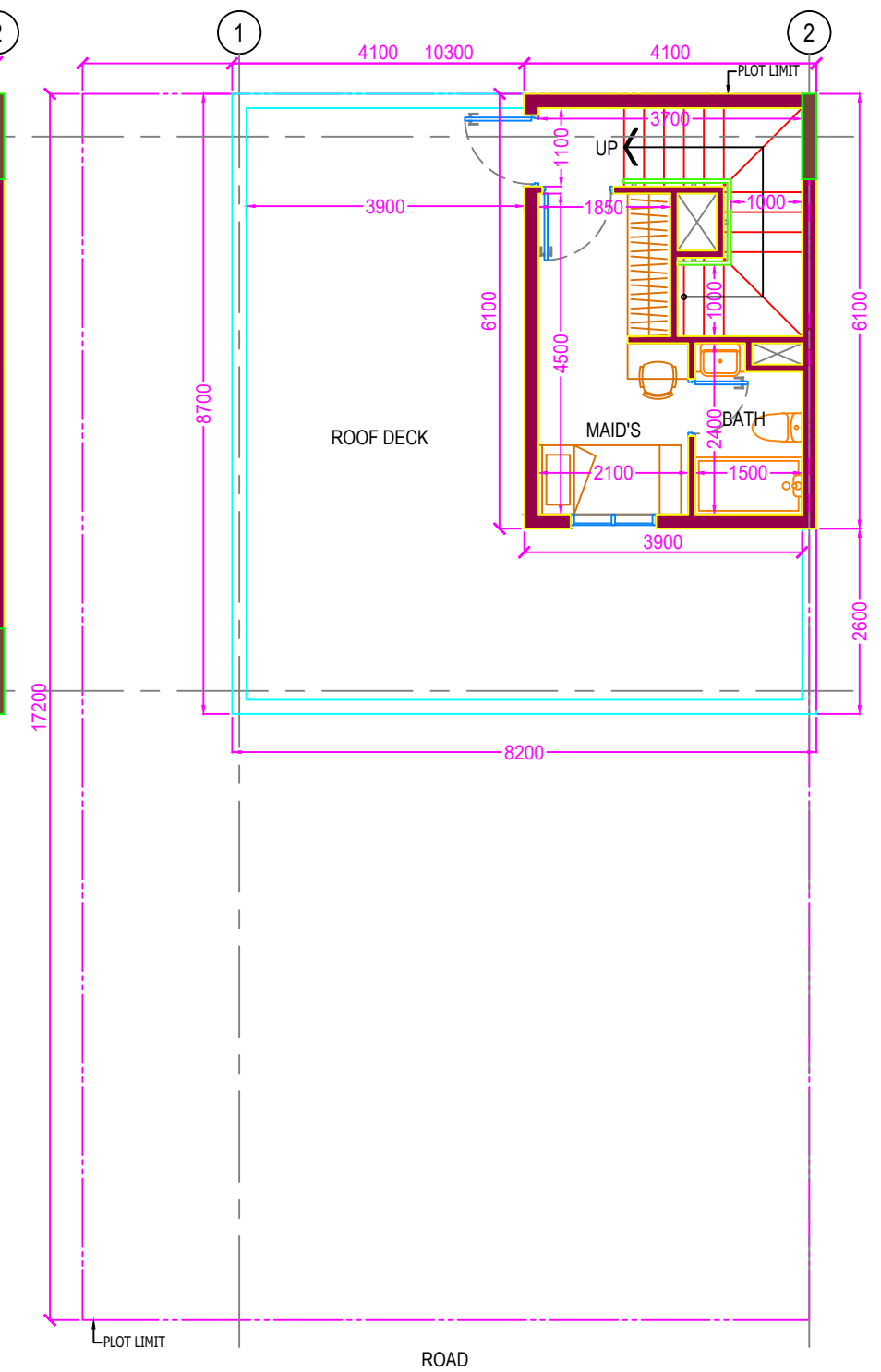
<b>TWO BEDROOM TOWNHOUSE</b>
Construction Area: 123.87 sq.m.
GFA (Internal Area): 107.28 sq.m.
Plot Area (Average): 99.4 sq.m.



GROUND FLOOR

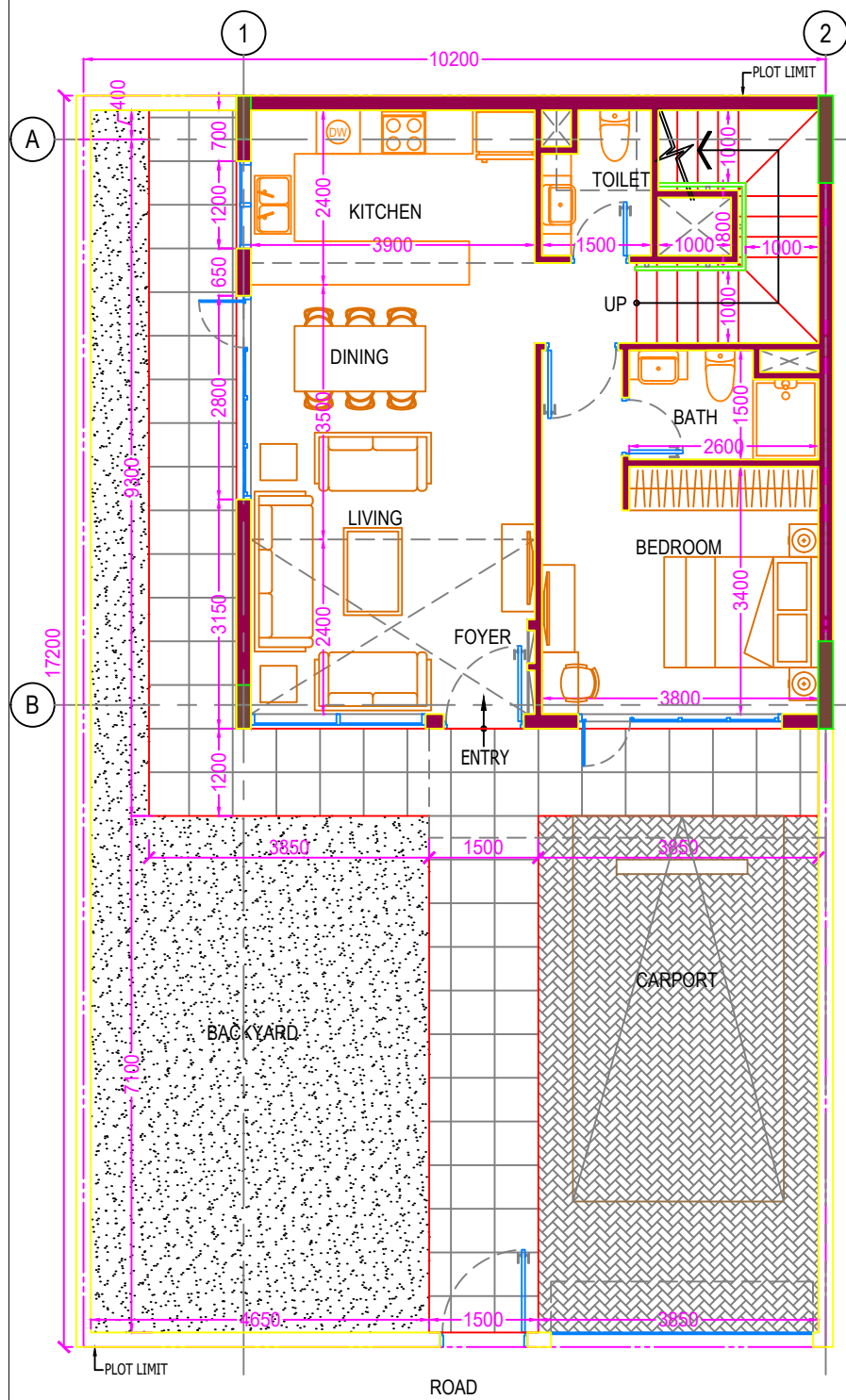


1ST FLOOR

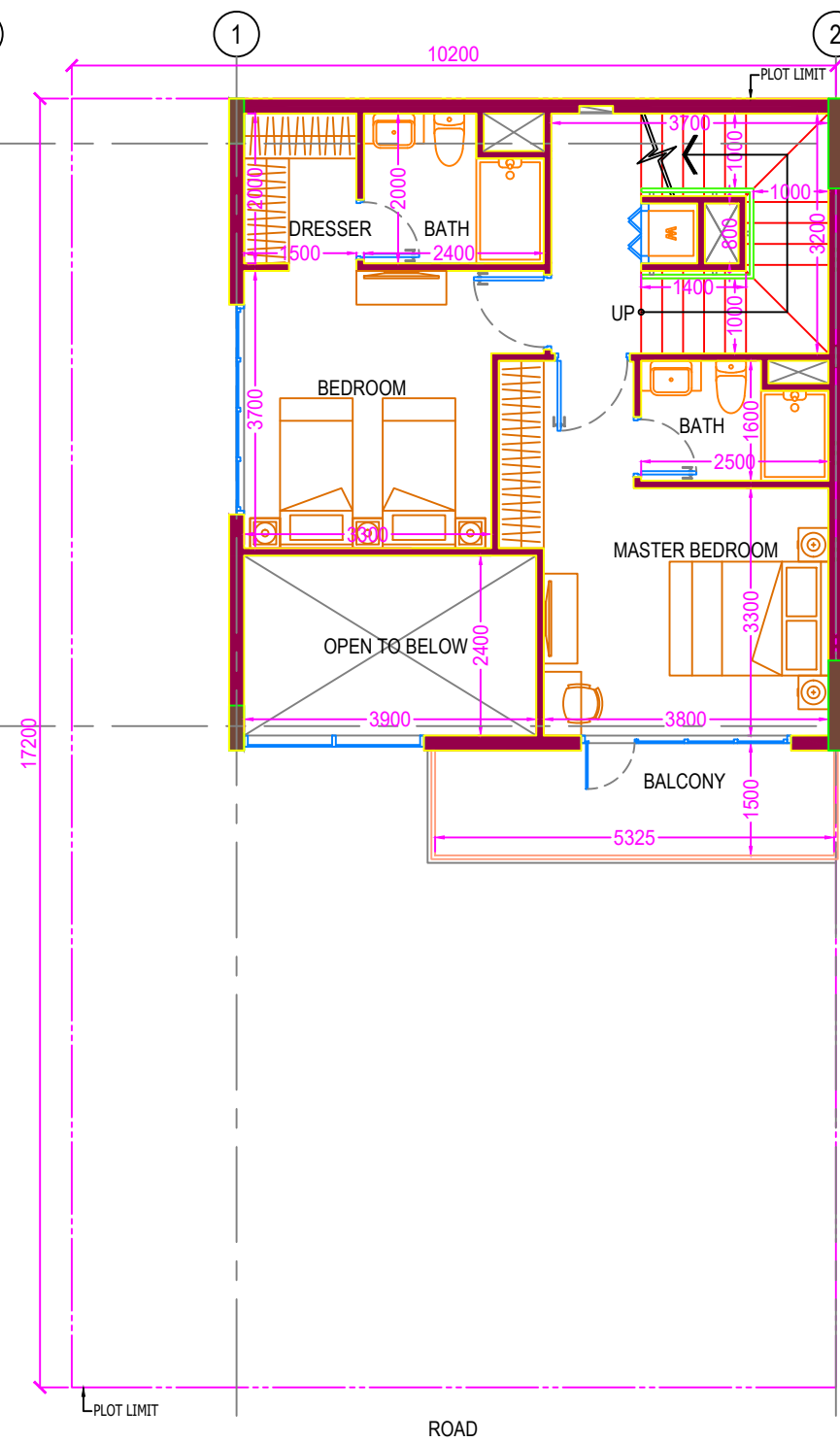


2ND FLOOR

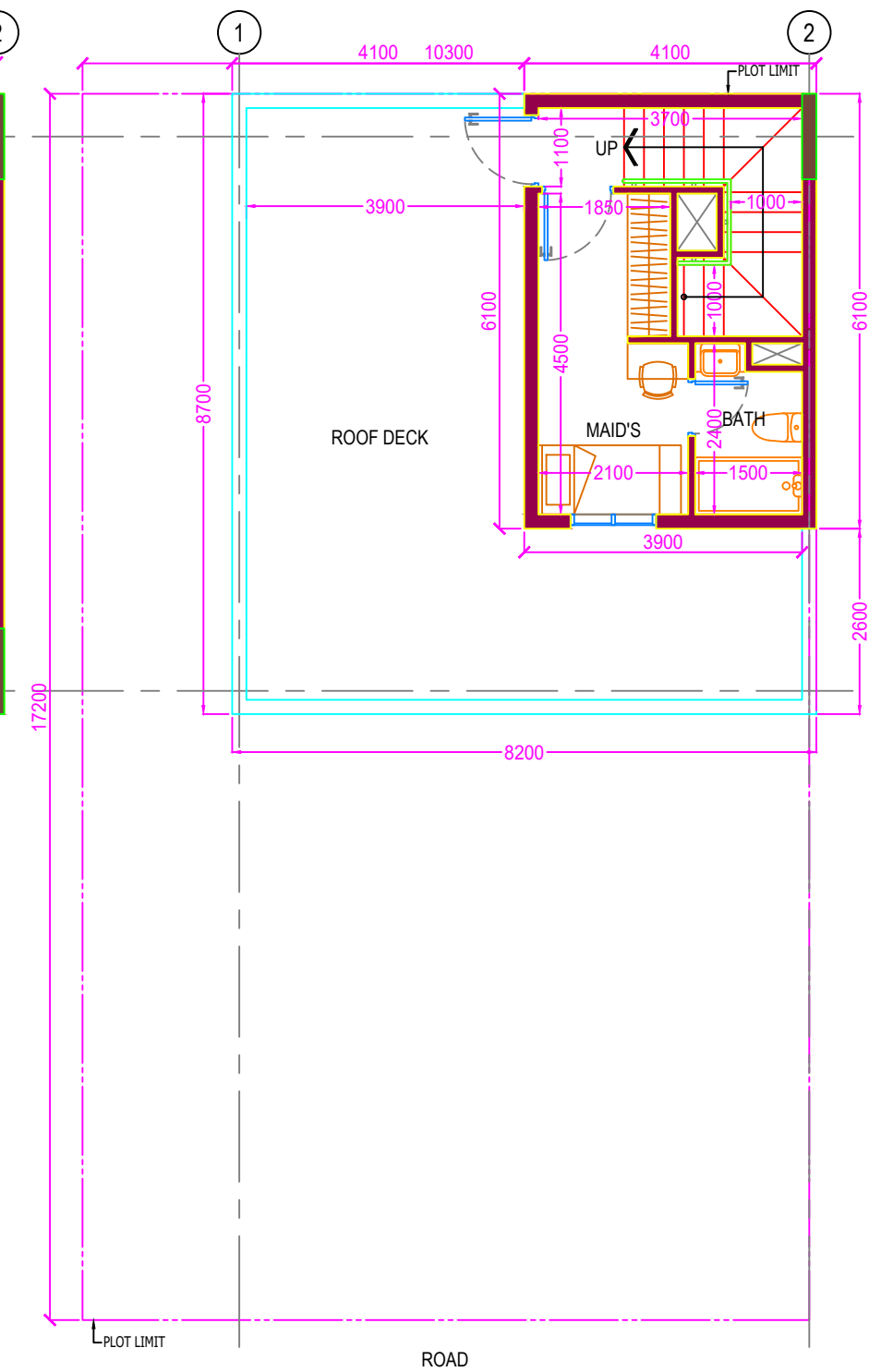
<b>THREE BEDROOM TOWNHOUSE-A</b>
Construction Area: 161.86 sq.m.
GFA (Internal Area): 153.09 sq.m.
Plot Area (Average): 209.89 sq.m.



GROUND FLOOR

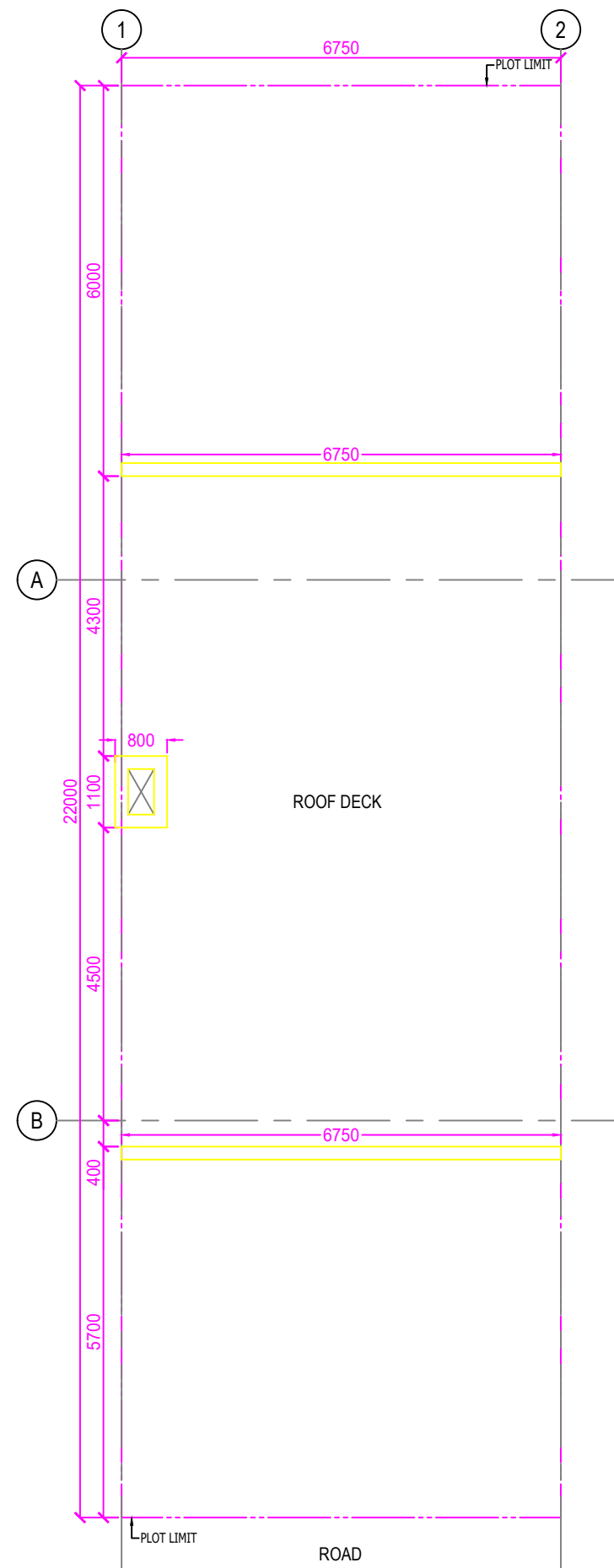
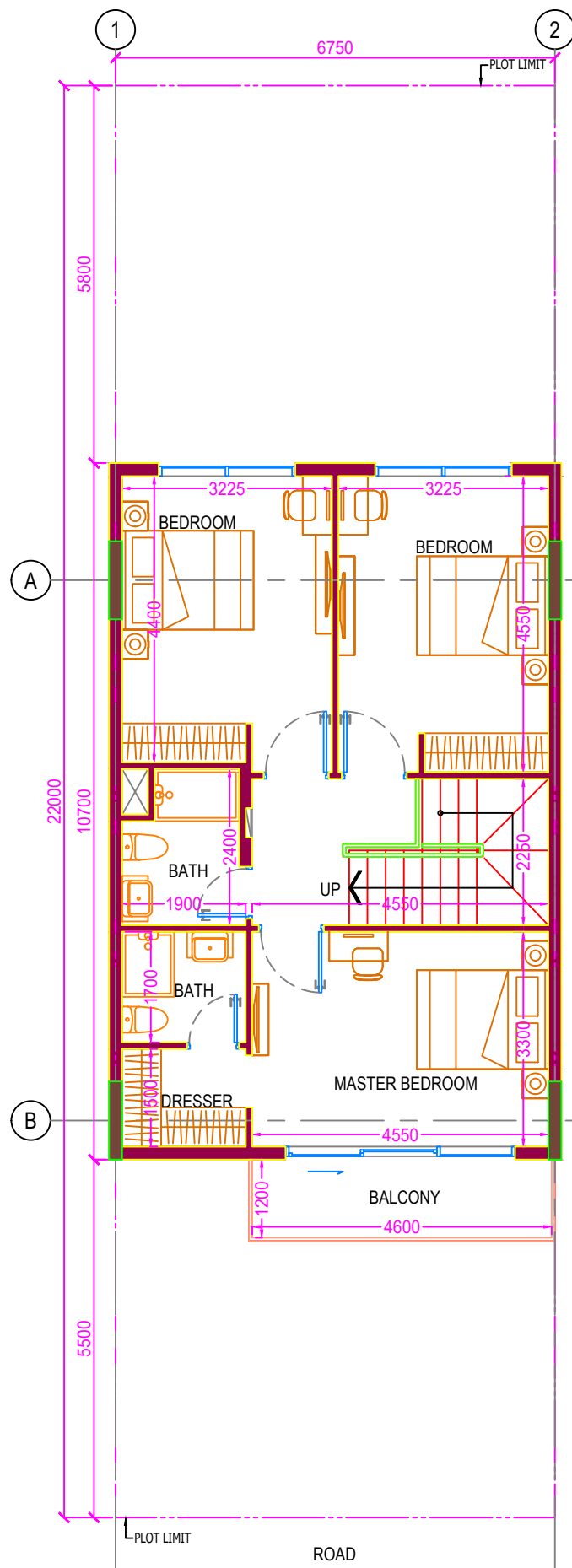
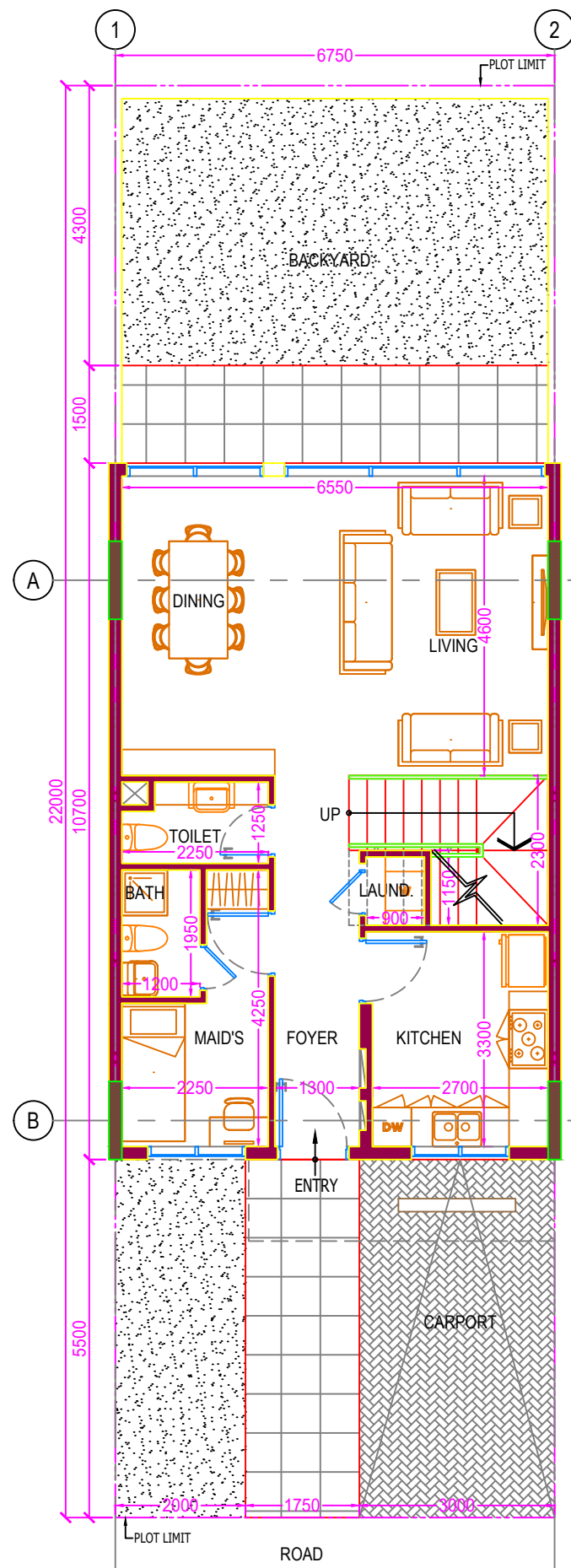


1ST FLOOR

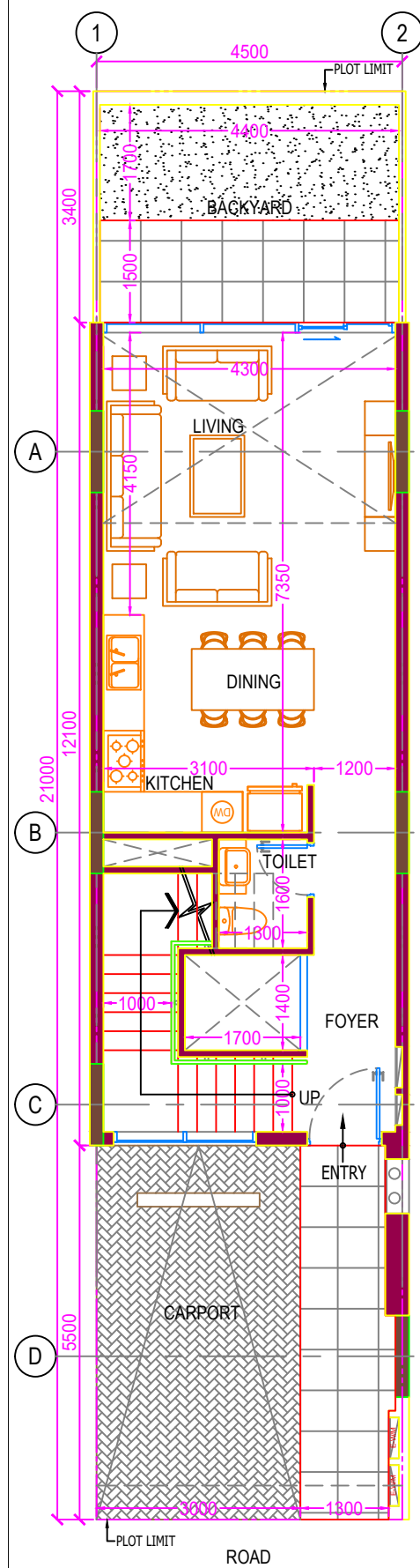


2ND FLOOR

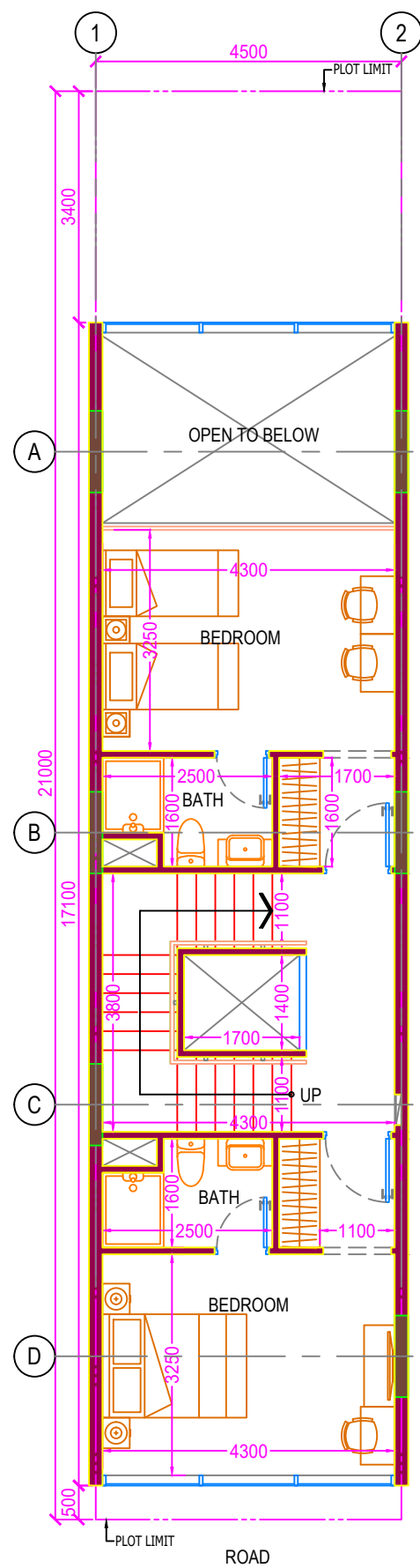
<b>THREE BEDROOM TOWNHOUSE-A</b>
Construction Area: 161.86 sq.m.
GFA (Internal Area): 153.09 sq.m.
Plot Area (Average): 209.89 sq.m.



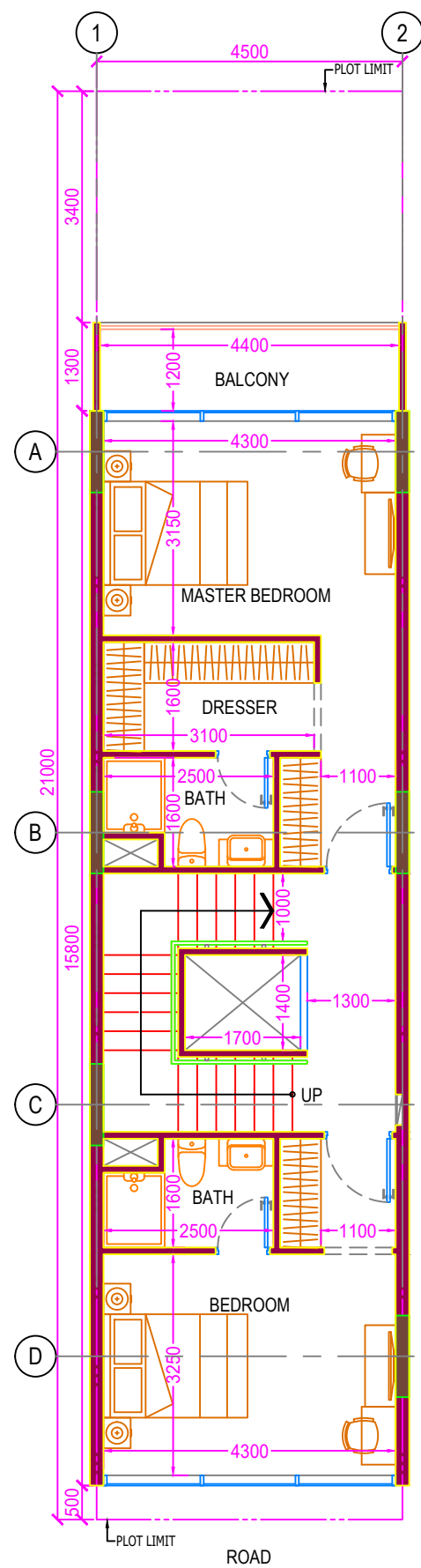
<b>THREE BEDROOM TOWNHOUSE-B</b>
Construction Area: 149.68 sq.m.
GFA (Internal Area): 144.03 sq.m.
Plot Area (Average): 151.57 sq.m.



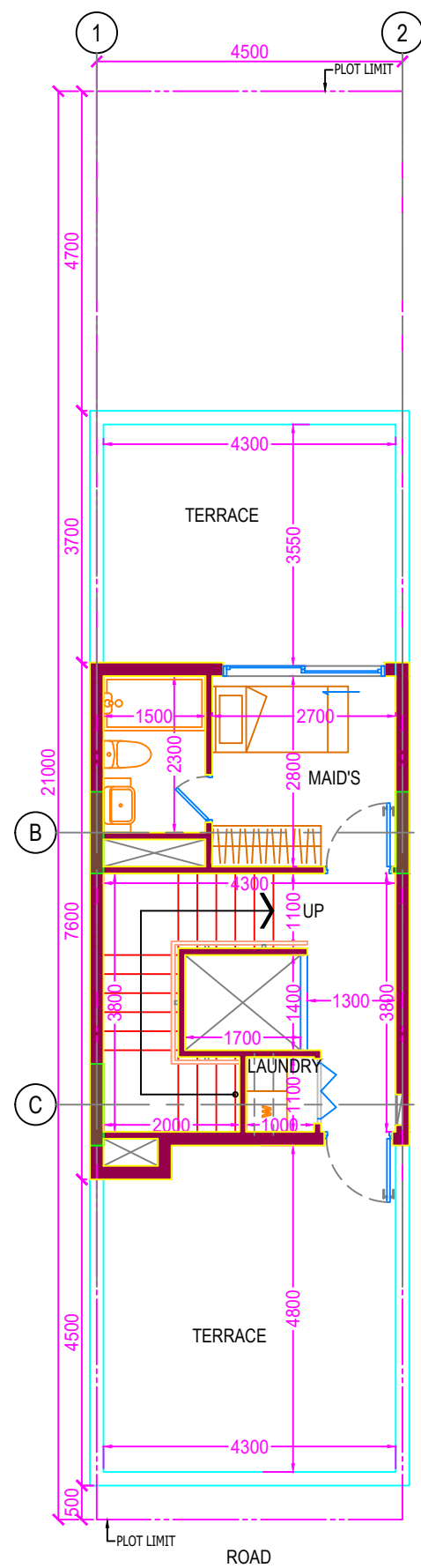
GROUND FLOOR



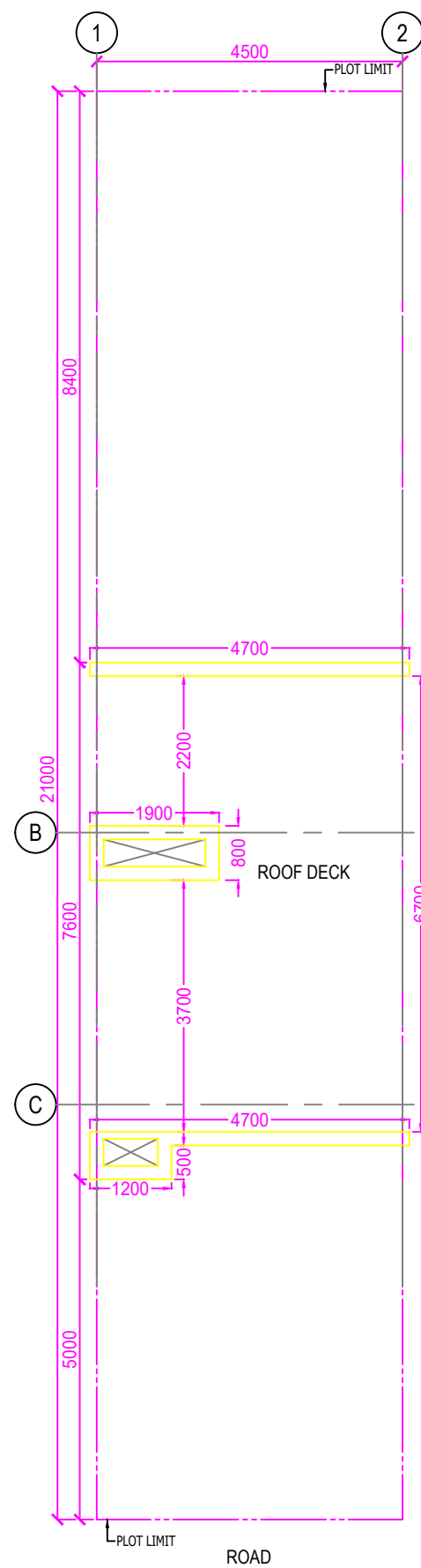
1ST FLOOR



2ND FLOOR

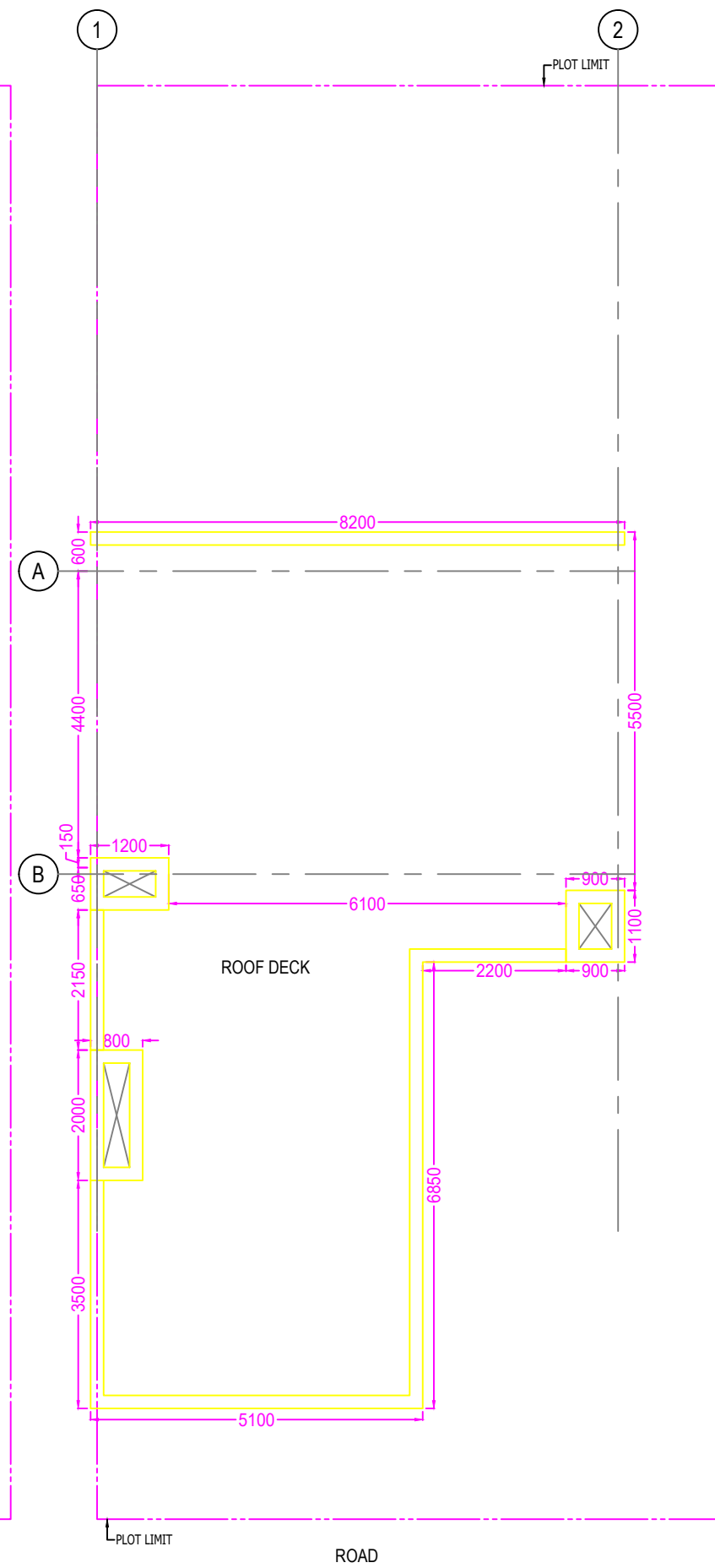
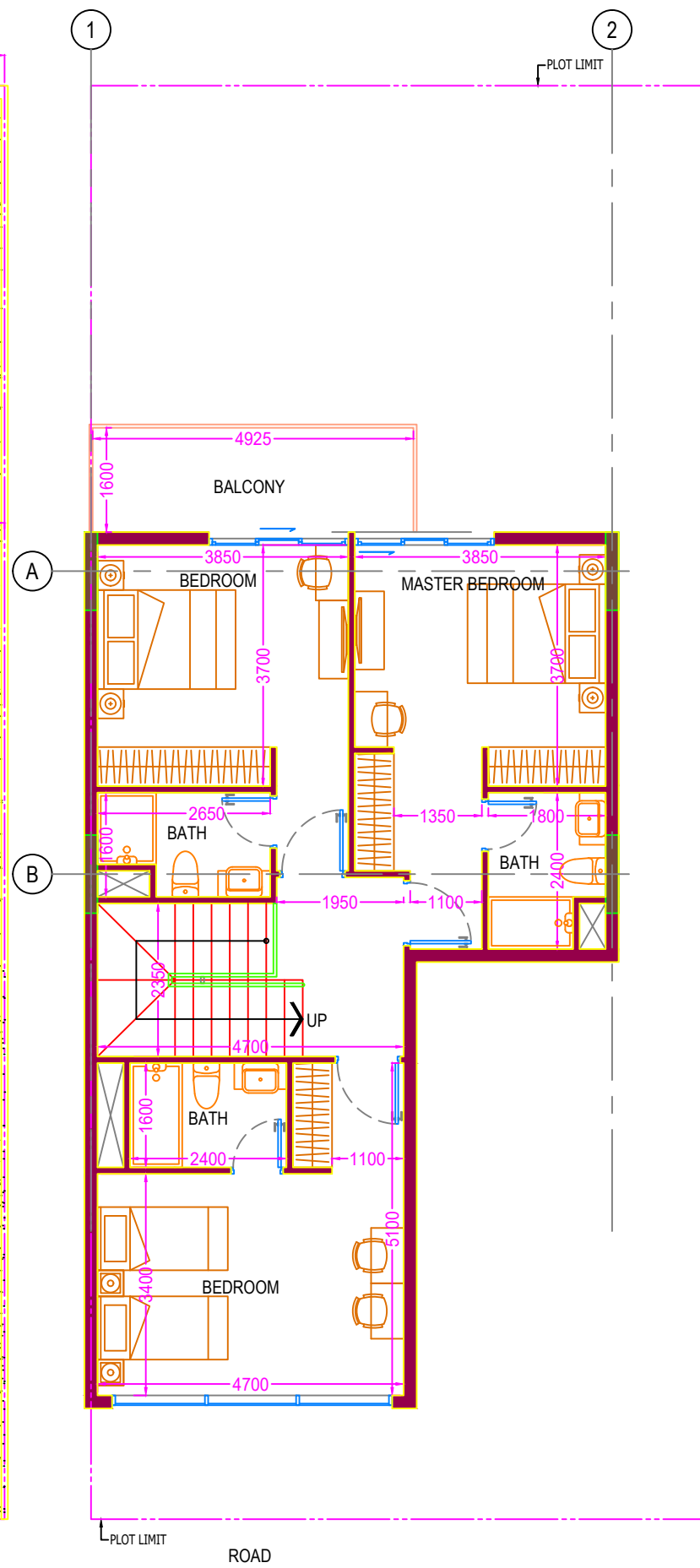
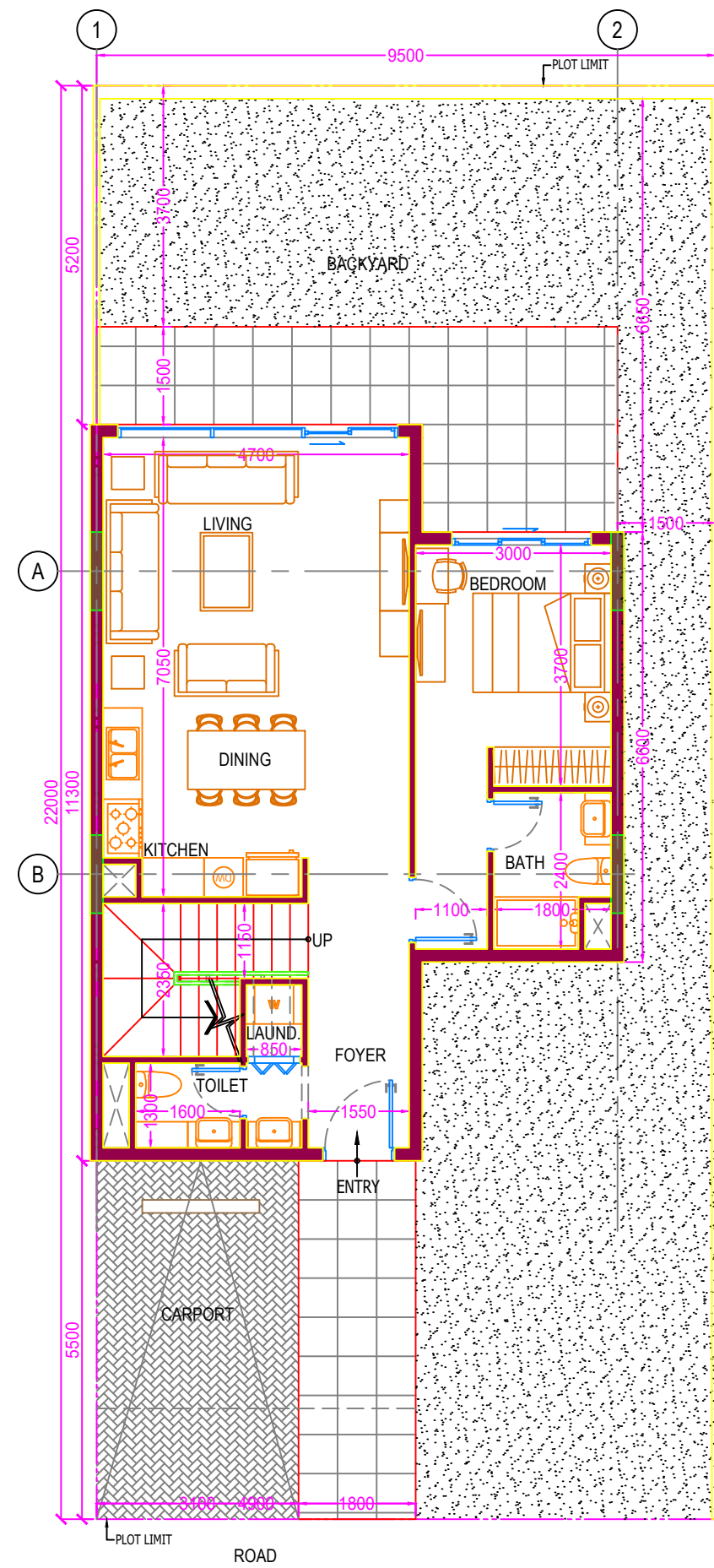


3RD FLOOR



ROOF FLOOR

<b>FOUR BEDROOM TOWNHOUSE-A</b>
Construction Area: 235.48 sq.m.
GFA (Internal Area): 212.98 sq.m.
Plot Area (Average): 103.90 sq.m.



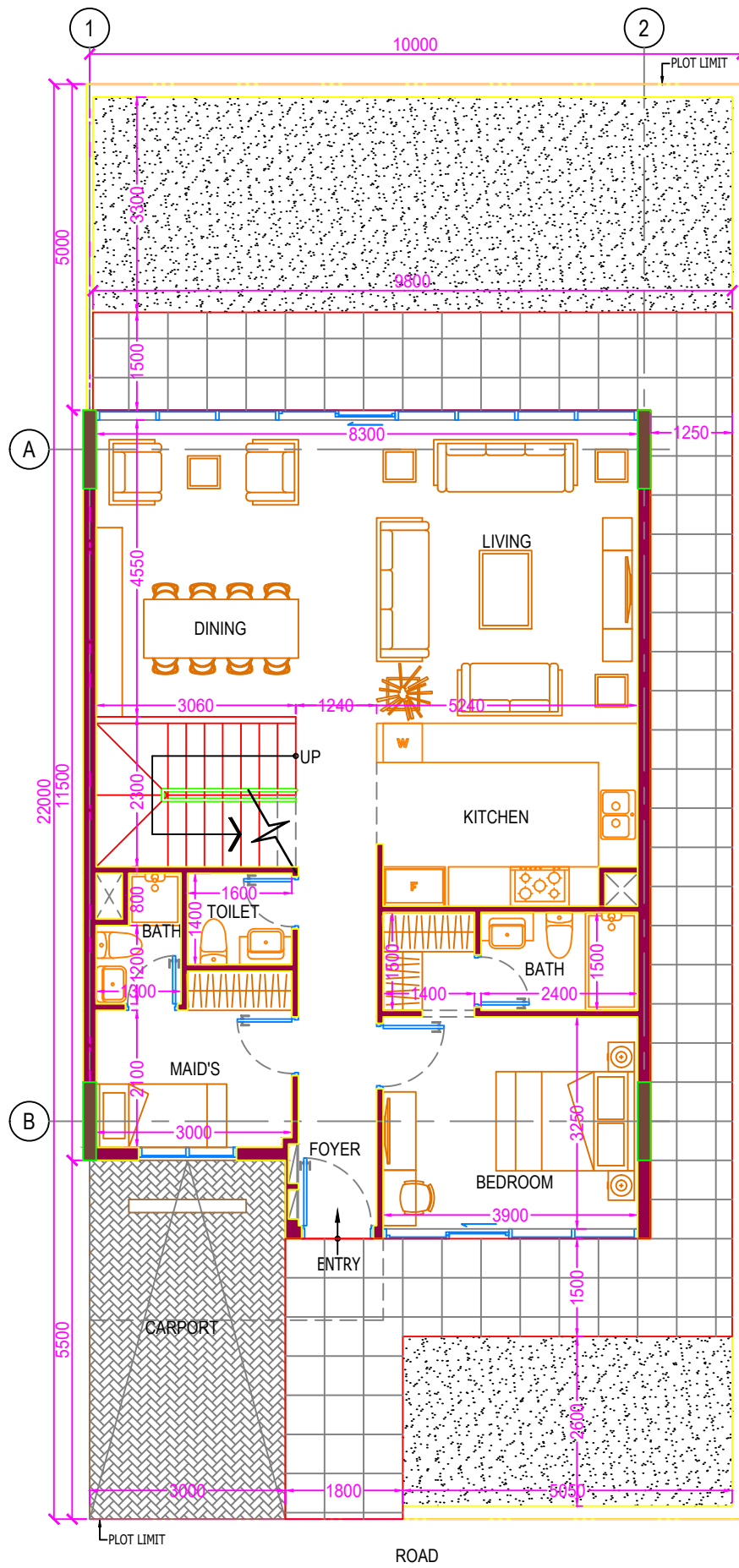
GROUND FLOOR

1ST FLOOR

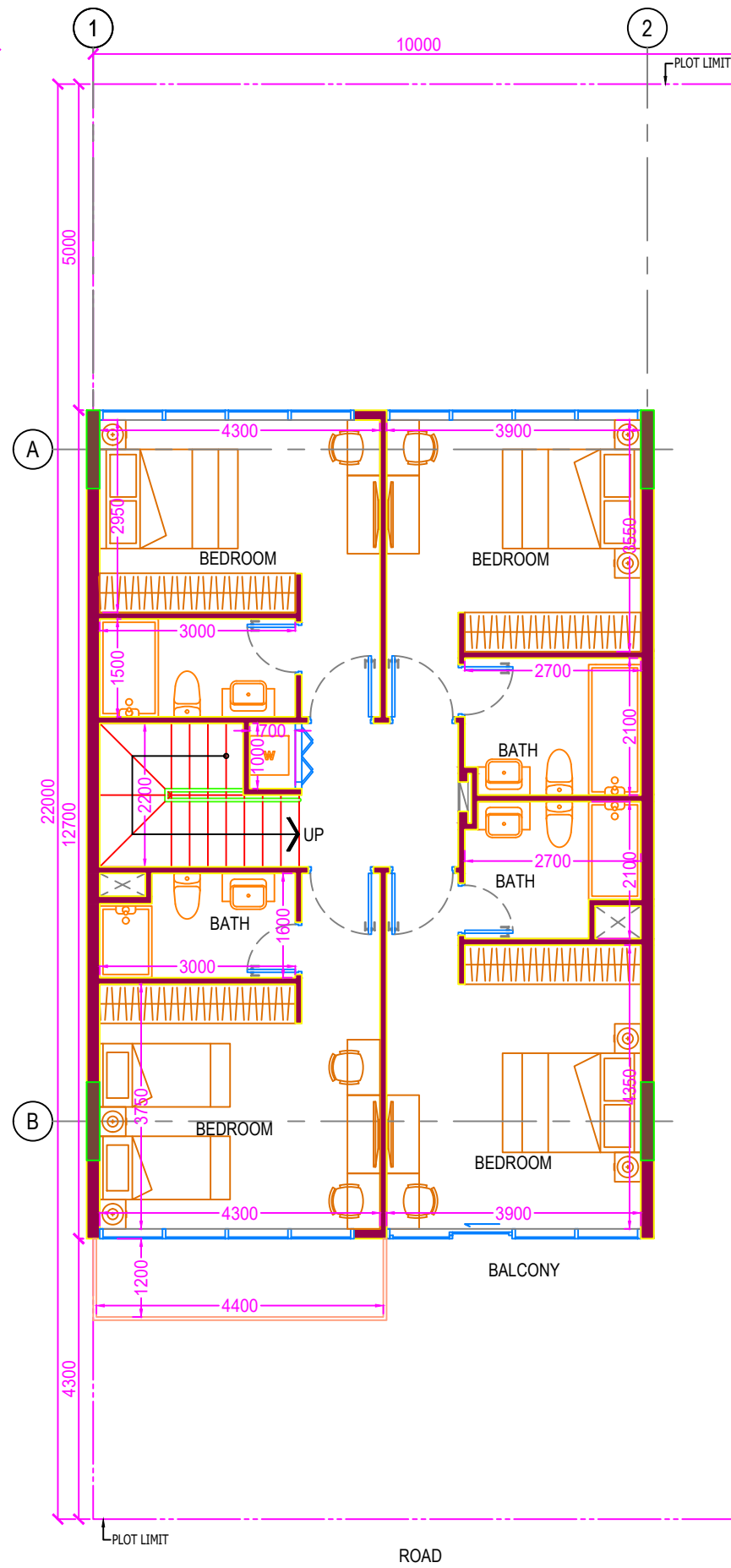
ROOF FLOOR

<b>FOUR BEDROOM TOWNHOUSE-B</b>
Construction Area: 180.01 sq.m.
GFA (Internal Area): 161.39sq.m.
Plot Area (Average): 223.92 sq.m.

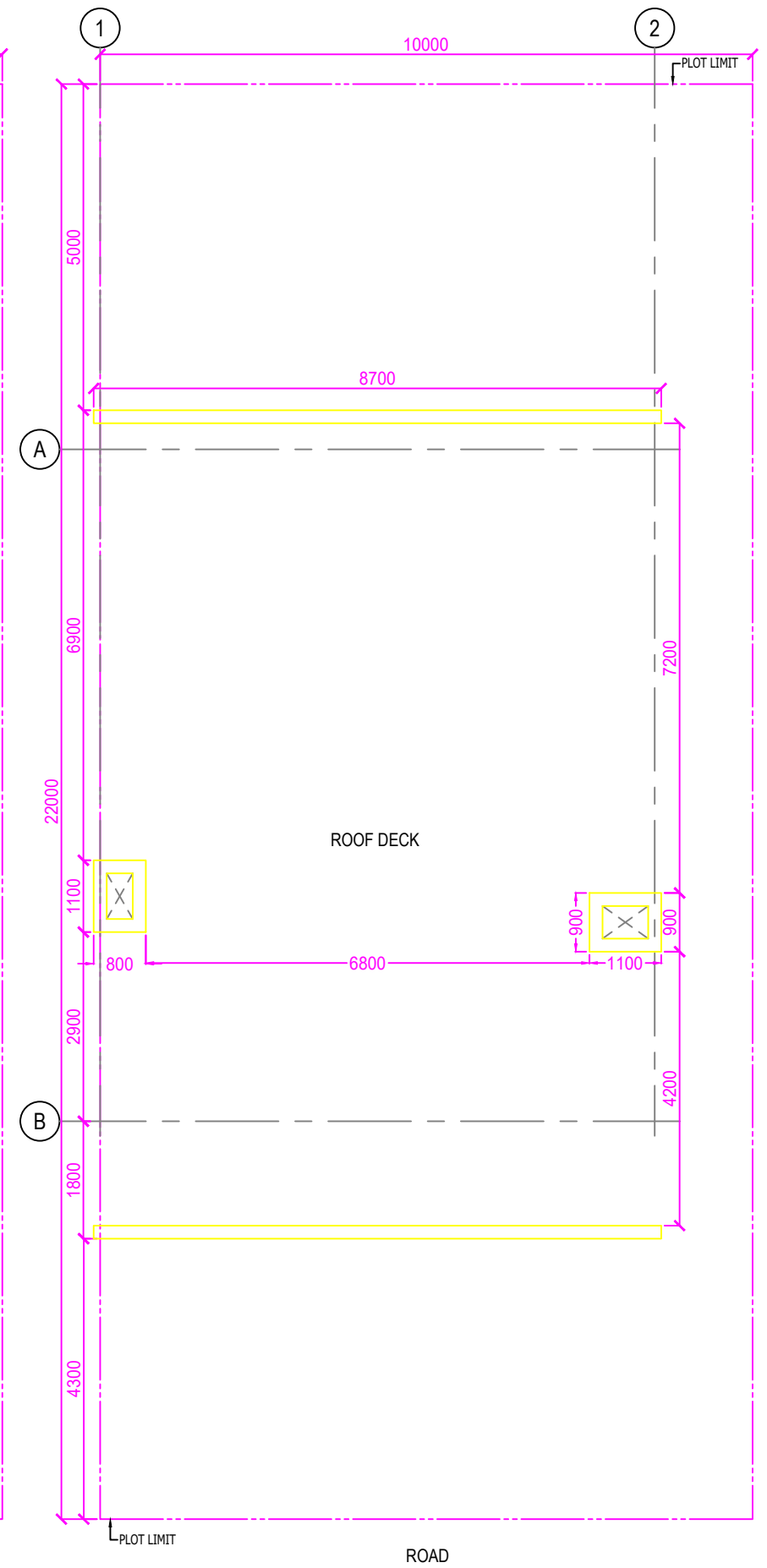




GROUND FLOOR



1ST FLOOR



ROOF FLOOR

<b>FIVE BEDROOM TOWNHOUSE</b>
Construction Area: 222.37 sq.m.
GFA (Internal Area): 213.71 sq.m.
Plot Area (Average): sq.m.