

99 PARKPLACE

BY **TABEER**
Developments

Live Beyond

Table of Contents

Dubai	06	The Amenities	48
Jumeirah Village Circle	10	Project Details	74
99 PARKPLACE	18	Floor Plans	76
The Residences	32	Tabeer Developments	84
Interiors	36		

A woman with long dark hair, wearing a white long-sleeved dress with a black belt, is walking through a lush, green garden. She is looking to her right. The garden is filled with various plants, including large green leaves and small yellow flowers. The scene is captured in a cinematic style with soft lighting.

Beyond *Expectations*

Welcome to a space where premium living isn't just a dream or limited to an inner circle, it's a way of life.

Here, extraordinary is a state of being. It is about being yourself, going that extra mile to be original in what you do, where you live, and how you express yourself.

Join us in this journey where every step, every laugh, and every shared moment brings joy, beyond expectations.



United
Arab Emirates

DUBAI

Beyond *Comparison*



From the world's tallest building to the world's safest city, Dubai continuously pushes boundaries, always staying at the forefront of lifestyle and innovation.

- Strategic Location
- Investor Friendly Policies
- Tax-free Economy
- Golden Visa
- One of the World's Safest Cities
- World-class Infrastructure
- Quality of Life
- State-of-the-art Education & Healthcare
- The Cleanest City in the World *
- Most Desirable Global Destination for Expats **

* Dubai has maintained its number one rank as the cleanest city in the world for the third consecutive year, according to the Global Power City Index (GPCI) issued by Japan's Mori Memorial Foundation.

** Dubai topped the wish lists of an incredible 60 countries in Remity study 'The cities the world wants to move to'





*Jumeirah
Village
Circle*



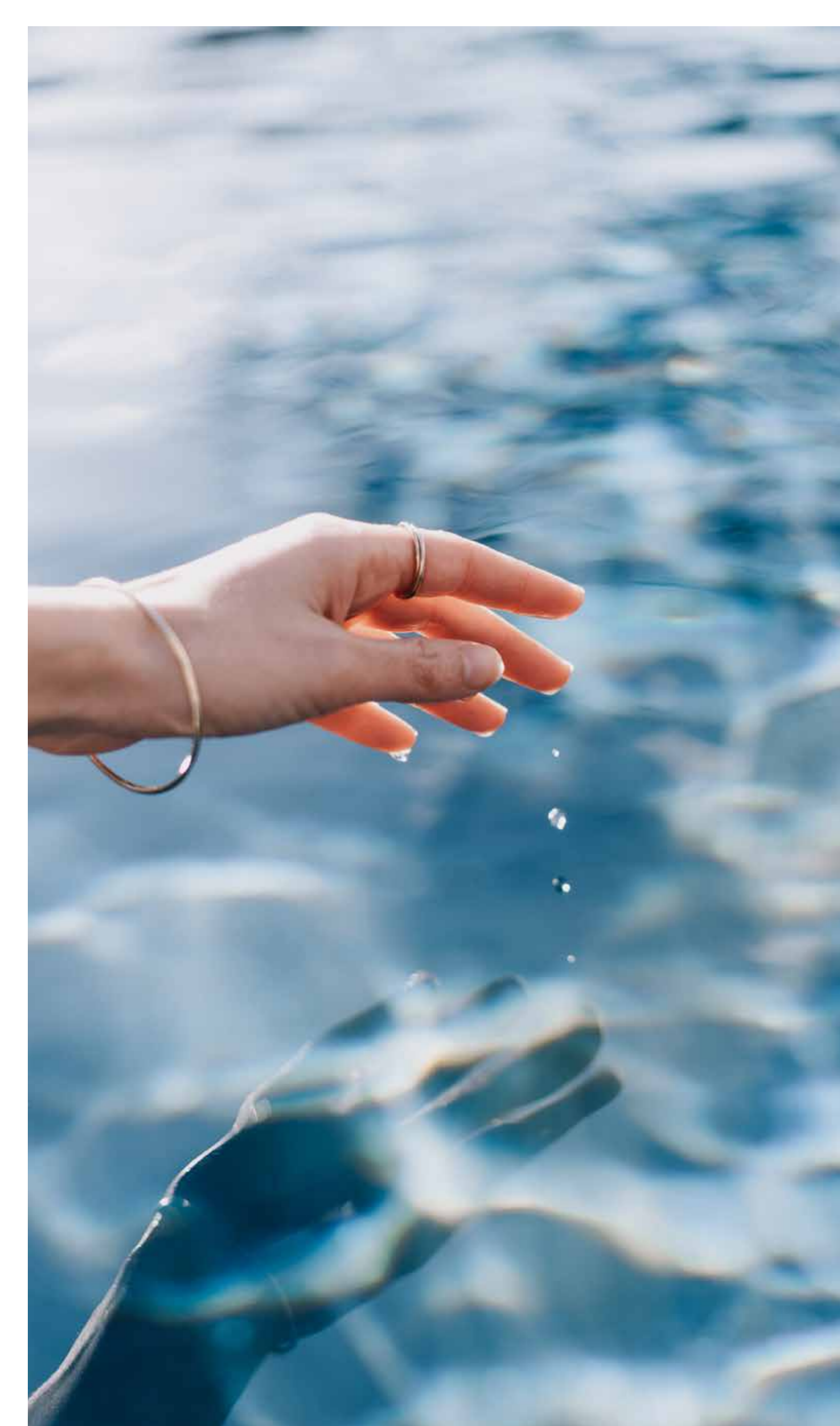


Beyond *Imagination*

Jumeirah Village Circle (JVC) is a beautiful, self-contained environment with all the modern facilities of a city in a tranquil village setting. Planned and designed to nurture holistic living, JVC is a perfect location for families and couples alike.

With the upcoming expansion of Hessa Street, from two to four in each direction, JVC will become a hub with even better accessibility, enhancing connectivity for residents and visitors alike.

Dotted with parks, gardens, sports fields, schools, and mosques throughout the community, living in JVC is a harmonious blend of nature, recreation, education, and cultural enrichment.



Premium living

Upscale living in Dubai's premium neighbourhood at an affordable cost.

The perfect family-first retreat

Discover a variety of choices for work, play, and life. From parks to playgrounds, cafes, and restaurants, this is the perfect spot.

Close to nature

Embrace yourself in the shades of nature in a community designed with parks, gardens and a lot of landscaped areas.

A sense of community

Plan play dates or a bbq get-togethers with your loved ones. With communal spaces and activities, you always have time to be in touch.

Close to everything

Strategically located and connected to all the hotspots, 99 PARKPLACE provides easy access to everything great that Dubai has to offer.

Retail, leisure and lifestyle

A city within the city, find shopping malls, supermarkets, and healthcare facilities close to 99 PARKPLACE.

Live at
the center



Healthcare

- 5 mins. to Aster Clinic
- 8 mins. to Life Medical Center
- 15 mins. to Mediclinic Parkview

Explore

- 10 mins. to Dubai Miracle Garden
- 15 mins. to Jebel Ali Race Course
- 20 mins. to Dubai Marina
- 20 mins. to Palm Jumeirah

Schools

- 5 mins. to Chubby Cheeks Nursery
- 7 mins. to JSS International School
- 10 mins. to Dubai Heights Academy
- 10 mins. to GEMS Founders School

Shopping

- 05 mins. to Circle Mall
- 10 mins. to Springs Souk
- 12 mins. to Dubai Hills Mall

Travel

- 30 mins. to Dubai Airport
- 30 mins to Al Maktoum Airport

An architectural rendering of a modern building facade. The building features a prominent, curved, cantilevered upper level and a large glass curtain wall. The sky is a clear, bright blue. The text '99 PARKPLACE' is overlaid in white on the right side of the image.

99 PARKPLACE



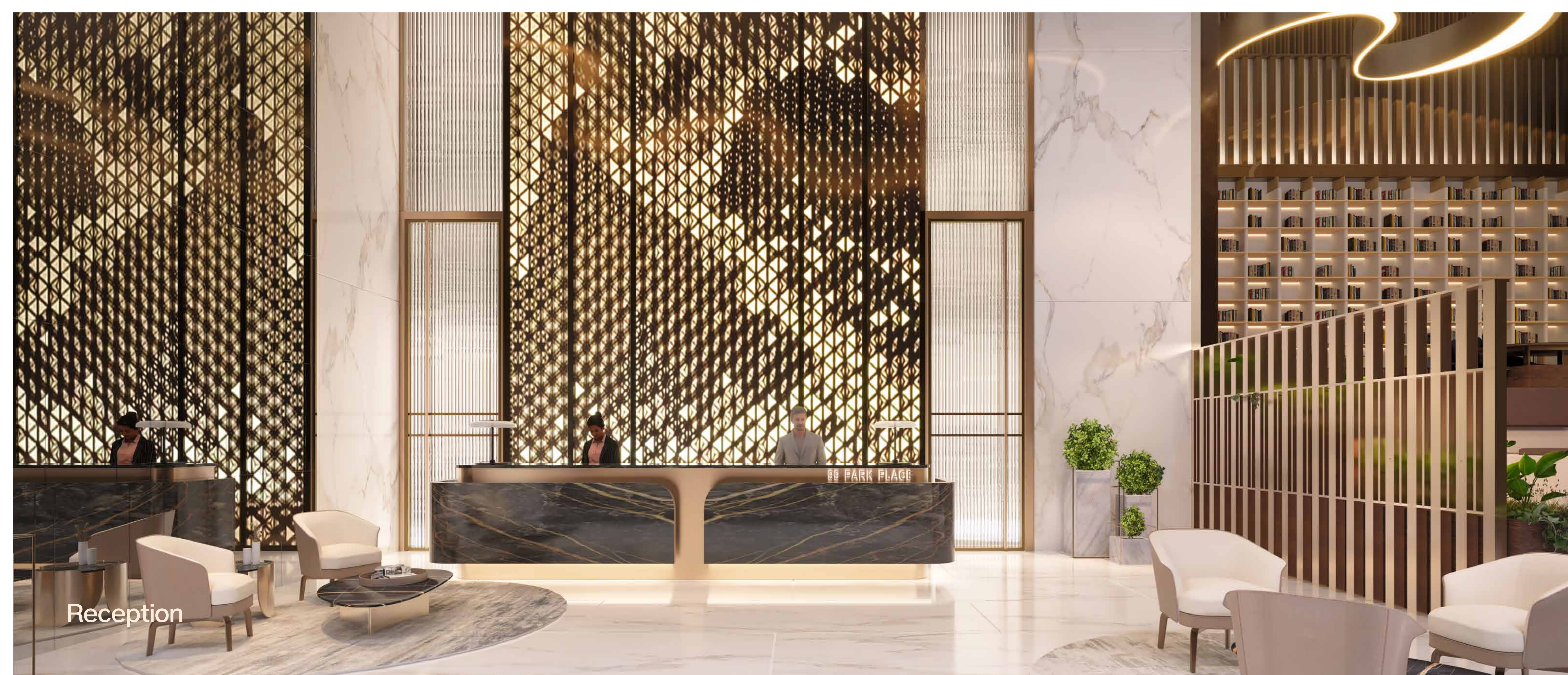
Beyond Words

Welcome to the definition of luxury done just right. Here, your aspirations for refined living are not only met but embraced wholeheartedly.

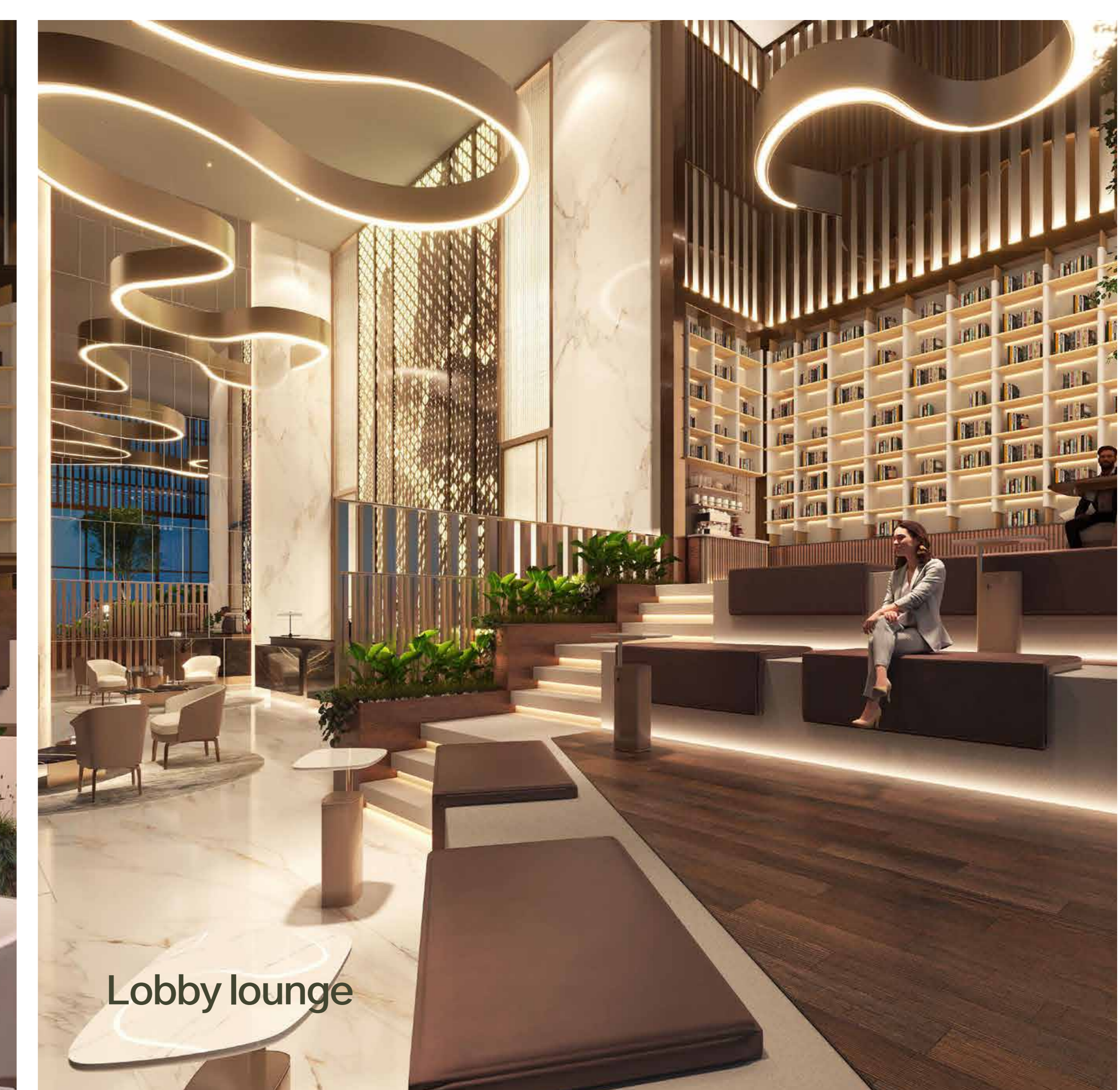
99 PARKPLACE is a collection of 99 residences designed to reflect sophistication and functionality.

From the beautiful elevation to aesthetic interiors to expertly curated amenities, everything at 99 PARKPLACE exudes exclusivity and charm.





Reception



Lobby lounge



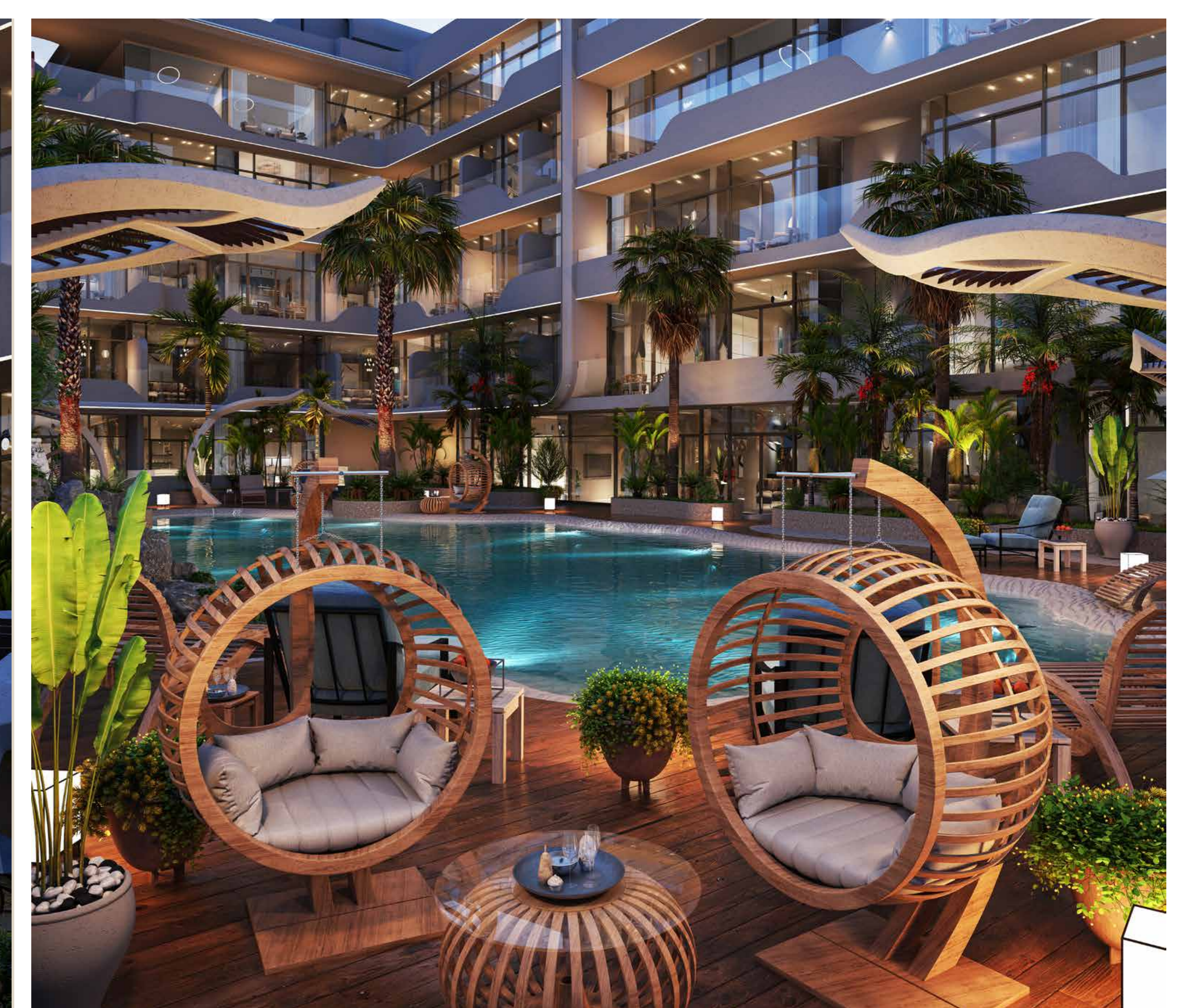
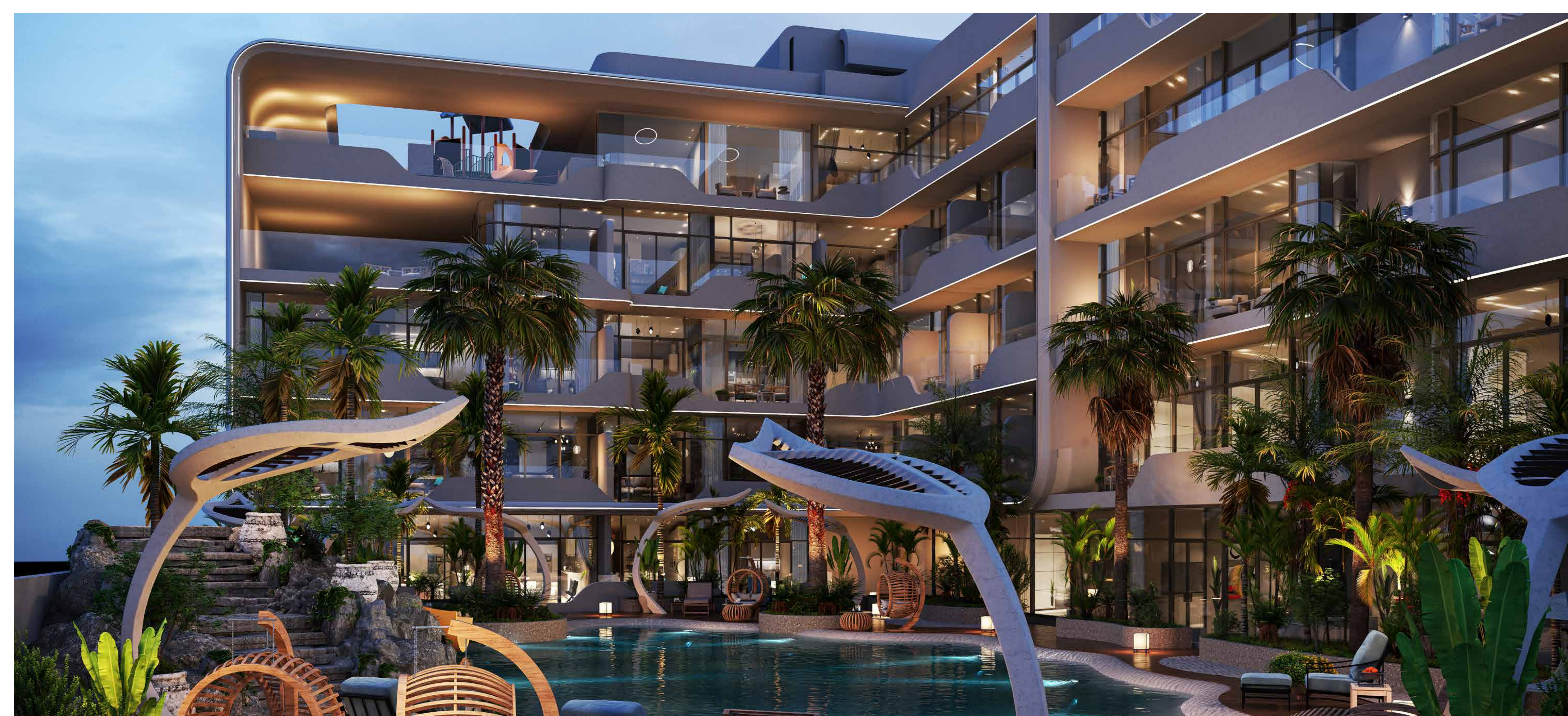
Lift lobby

Beyond *Measure*

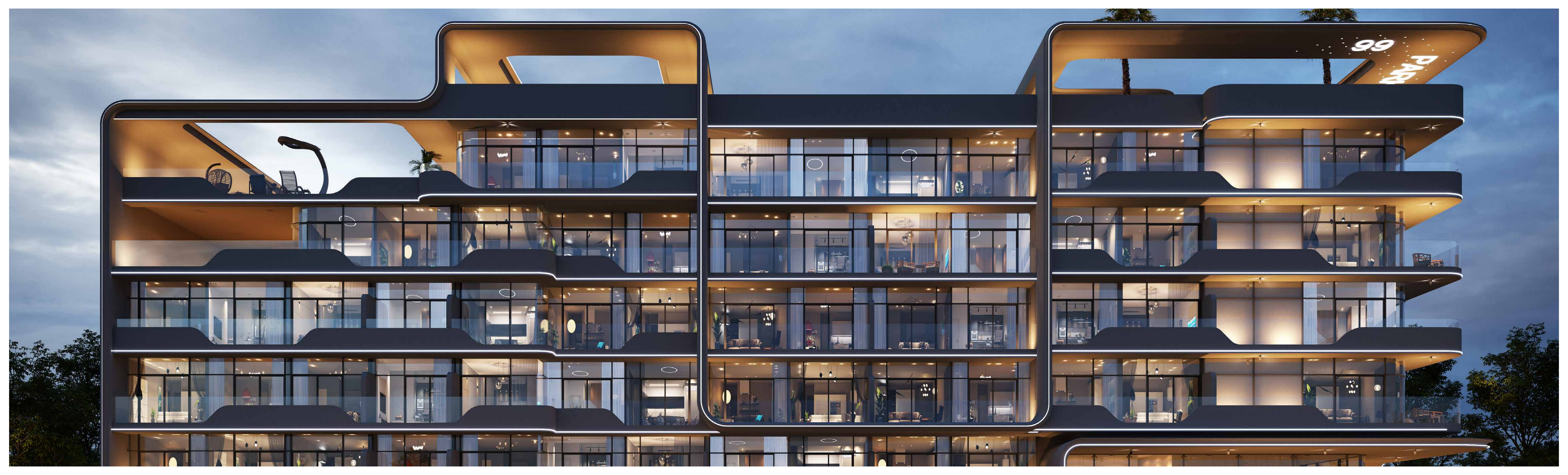


Beyond square footage, at 99 PARKPLACE you will find a life crafted for your well-being.

Luxury isn't just an aesthetic, neither is it bound by particular places or measured by a specific value. It's about how every detail enhances your everyday experience. Step into a world where thoughtful design and attention to detail transforms living.

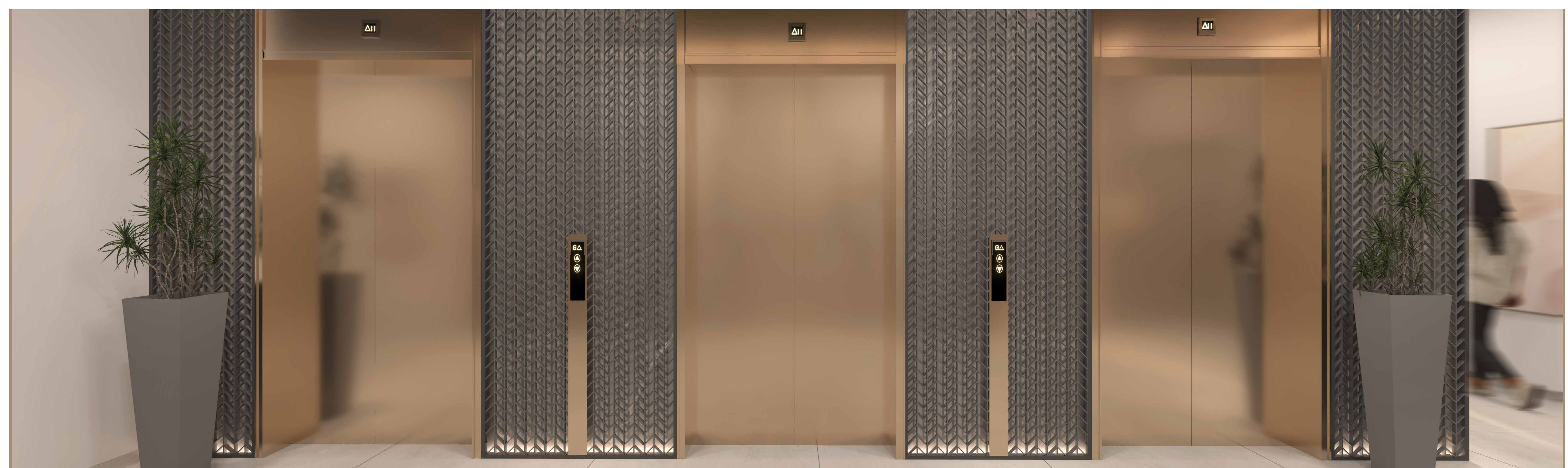


The *Residences*



The Interiors





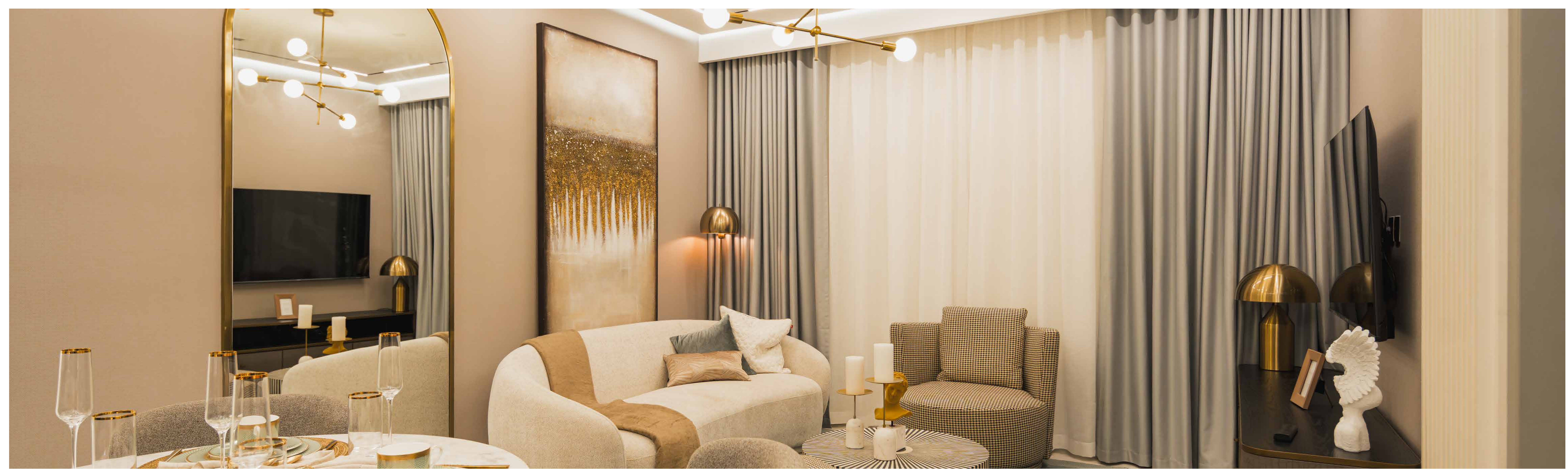


Beyond the *Usual*

Choose from multiple
layout options.

From spacious living area
to the choice of a private
plunge pool or balcony,
find your perfect residence
at 99 PARKPLACE.





A close-up photograph of a woman with dark hair, seen in profile, smelling a large white flower. The background is softly blurred, showing more greenery and flowers.

Beyond *Question*

We believe that a home should feel like the perfect fit from the first moment you see it. That's why we have curated every detail, ensuring that your first impression is one of warmth, comfort, and undeniable connection.

We have brought in unique features like the iconic floor-to-ceiling tiles raising the bar, an island countertop table in the kitchen, and stylish European-branded appliances.

Spacious sizes

Walk-in wardrobes

Floor-to-ceiling windows

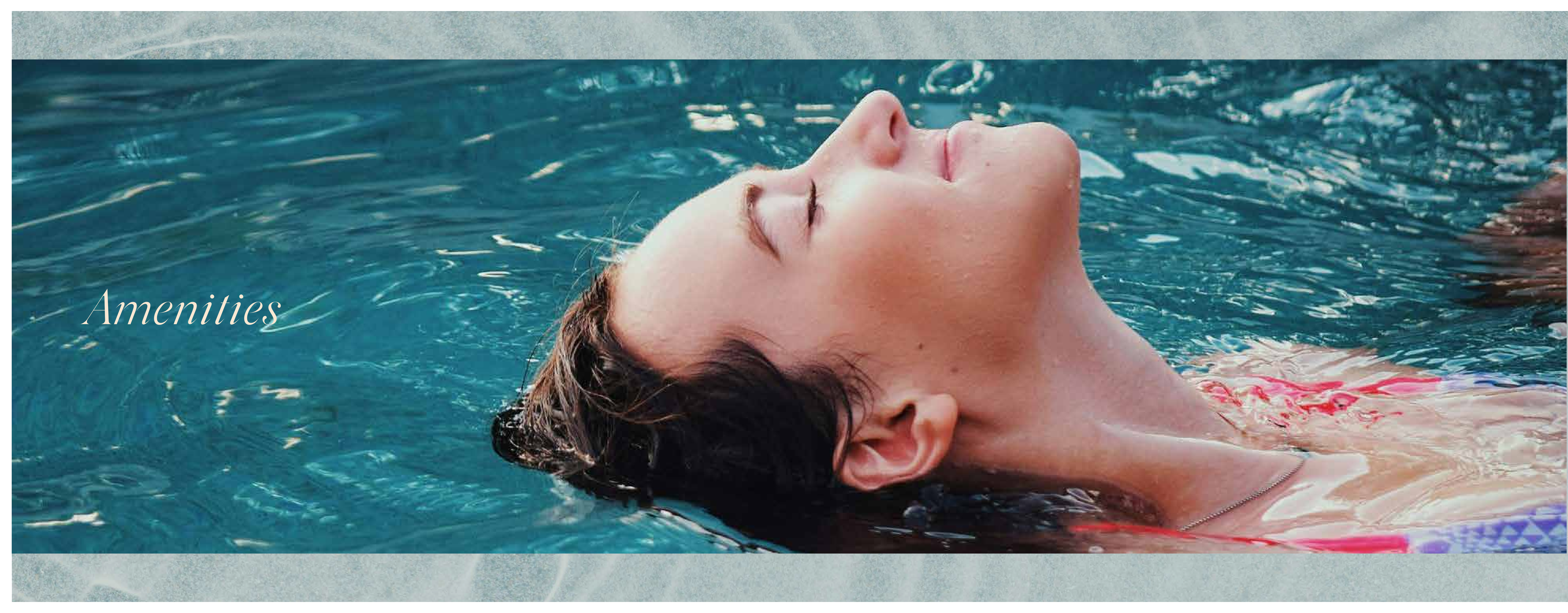
Full balcony access

Fully-fitted kitchen with appliances

Smart home system







Amenities

Be it moments of solitude or joy of togetherness, at 99 PARKPLACE you will find the perfect experience to elevate all your moods.

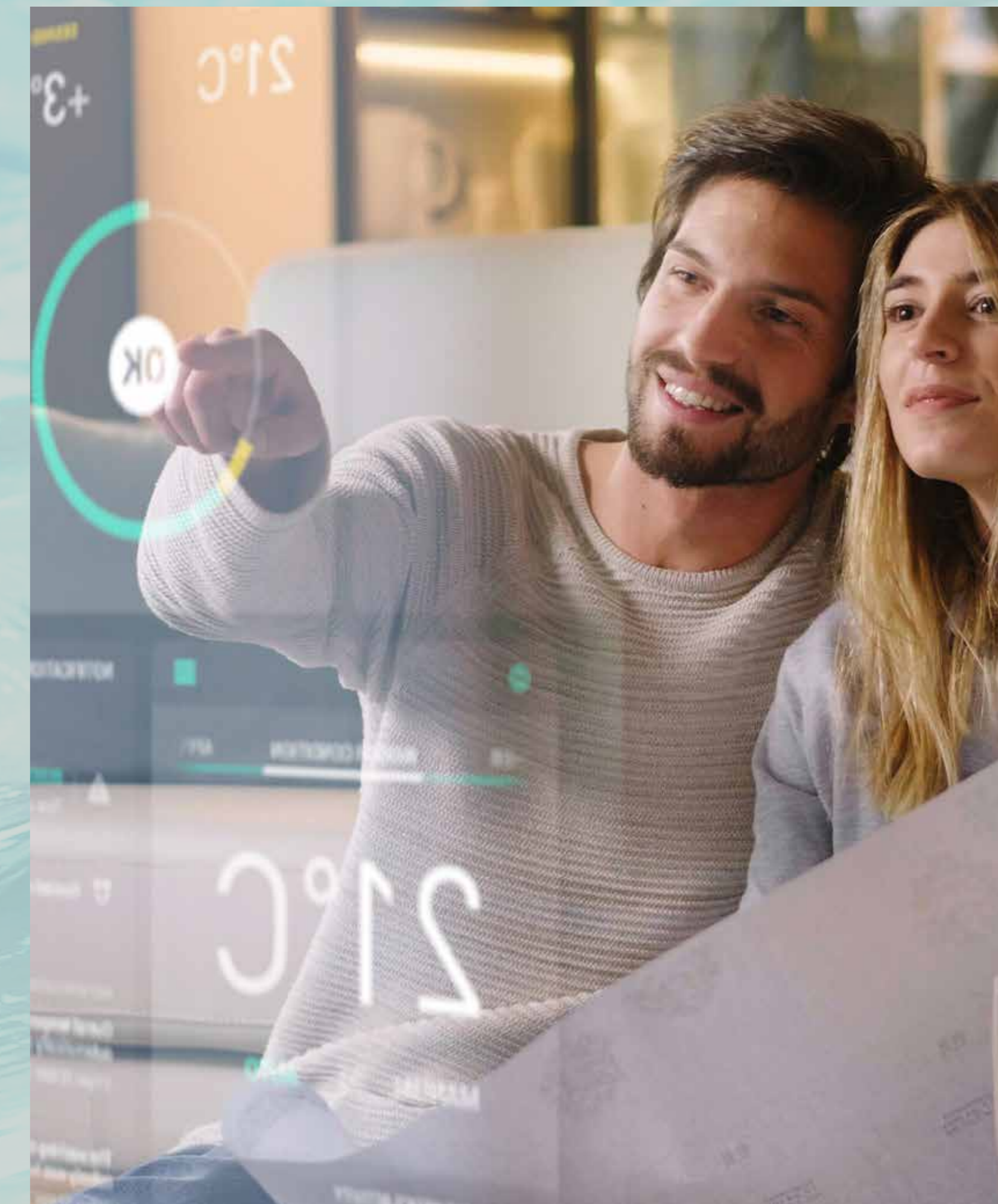
Enter in *Style*

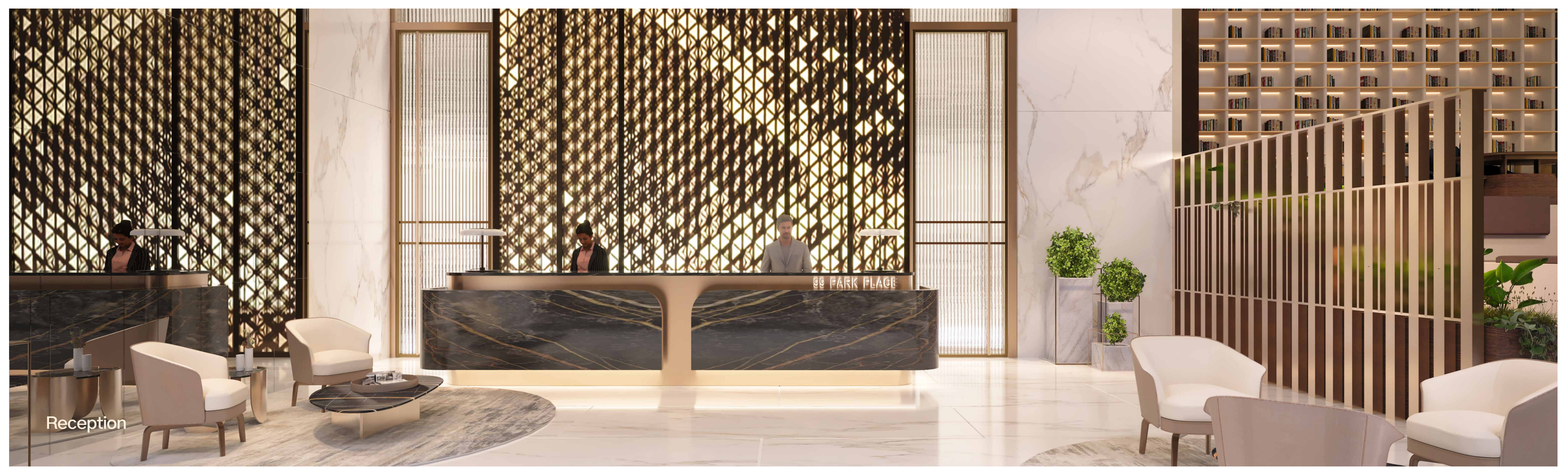


Walk into your home, at any time knowing you will be received warmly. Enjoy amenities like concierge, wellness centre, and more, tailored to elevate your living experience.

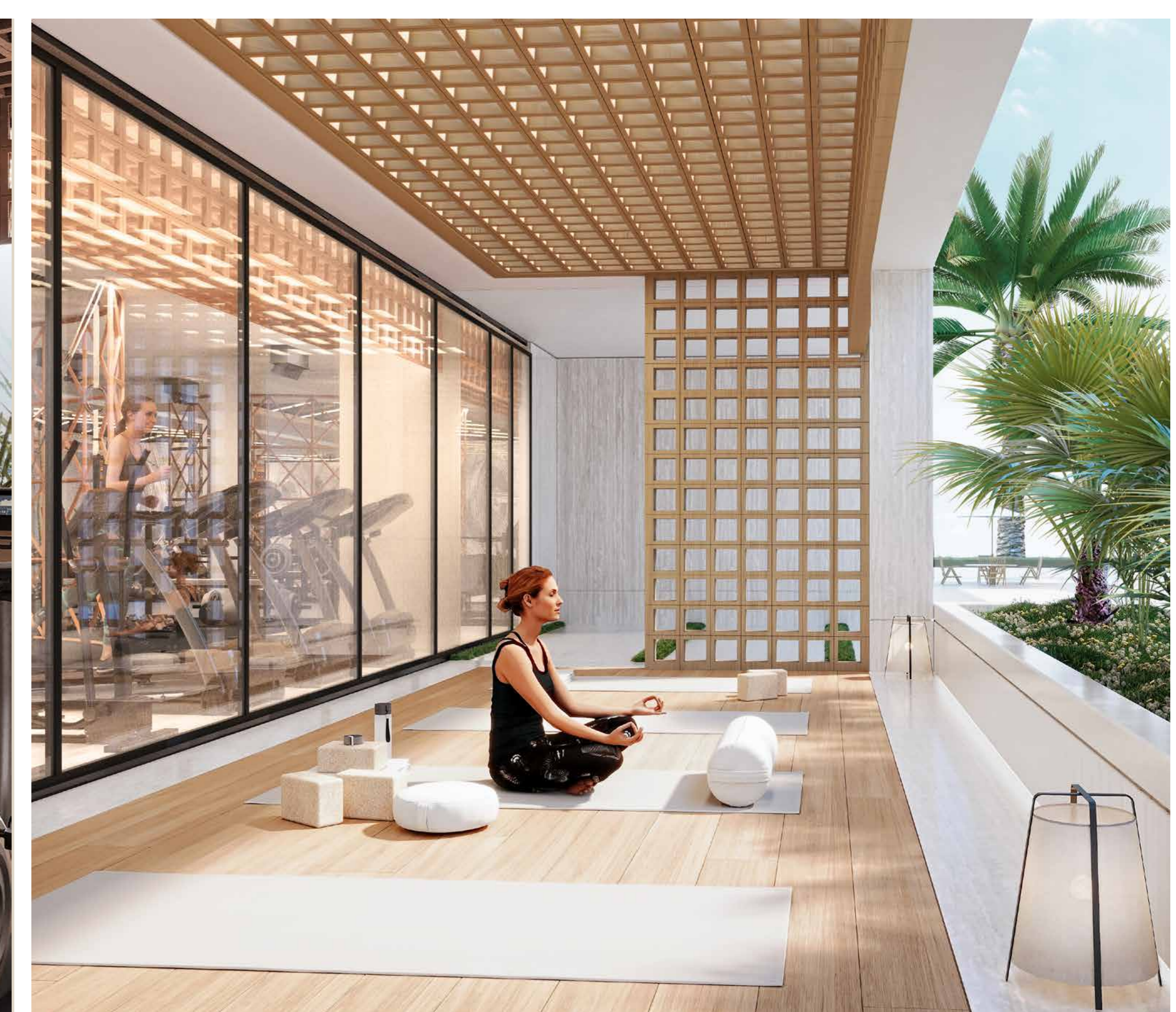
Interior Amenities

- 24/7 concierge
- European-branded appliances
- Wellness centre
- Smart-home automation
- Lobby lounge
- Business center



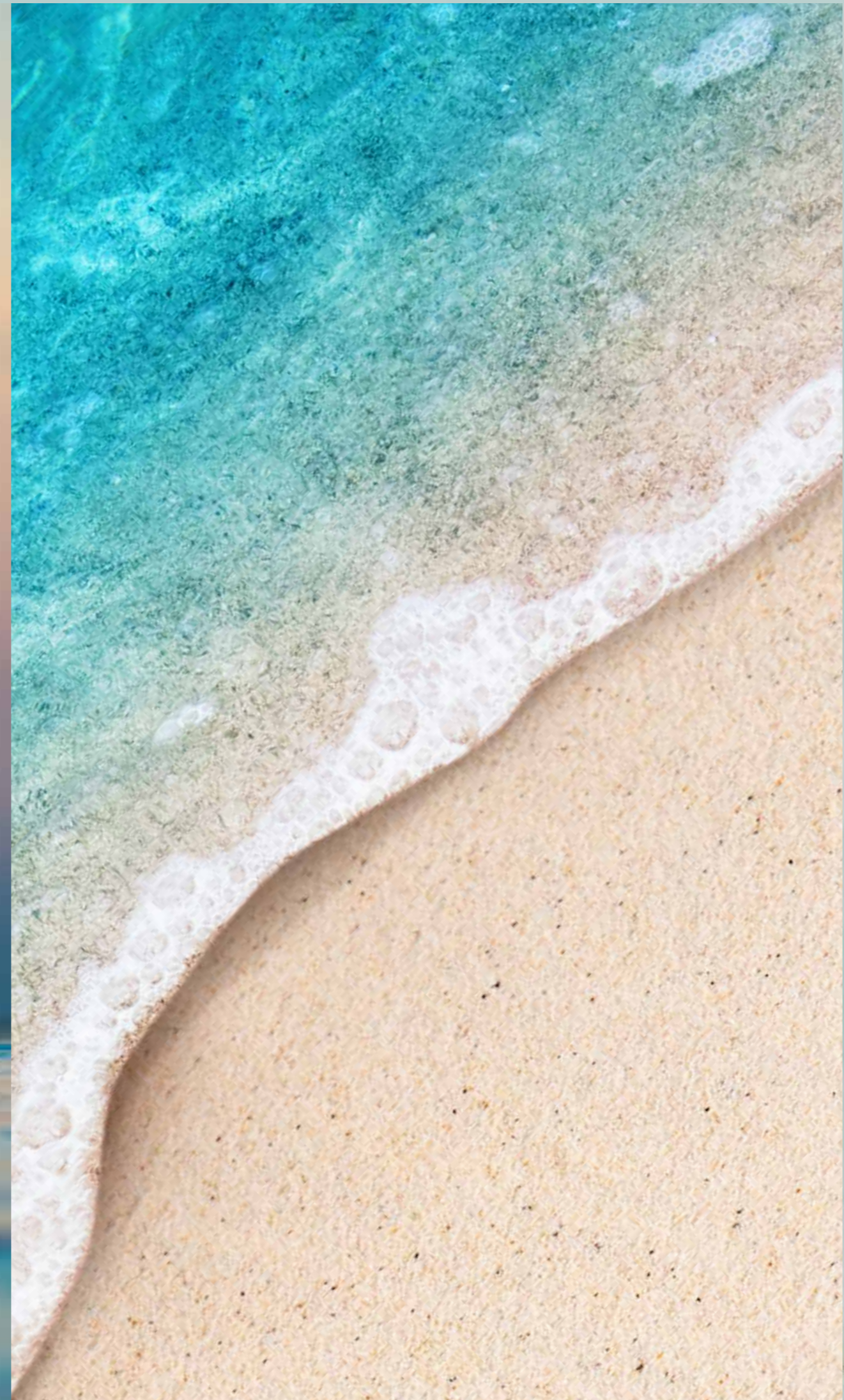


Reception





Make a Splash



The unique elevation of 99 PARKPLACE comes with exciting amenities at the podium.

Enjoy the energy of a beach-style swimming pool for the whole family. Or simply sit back, relax and soak up the sun.

Lesuire Deck Amenities

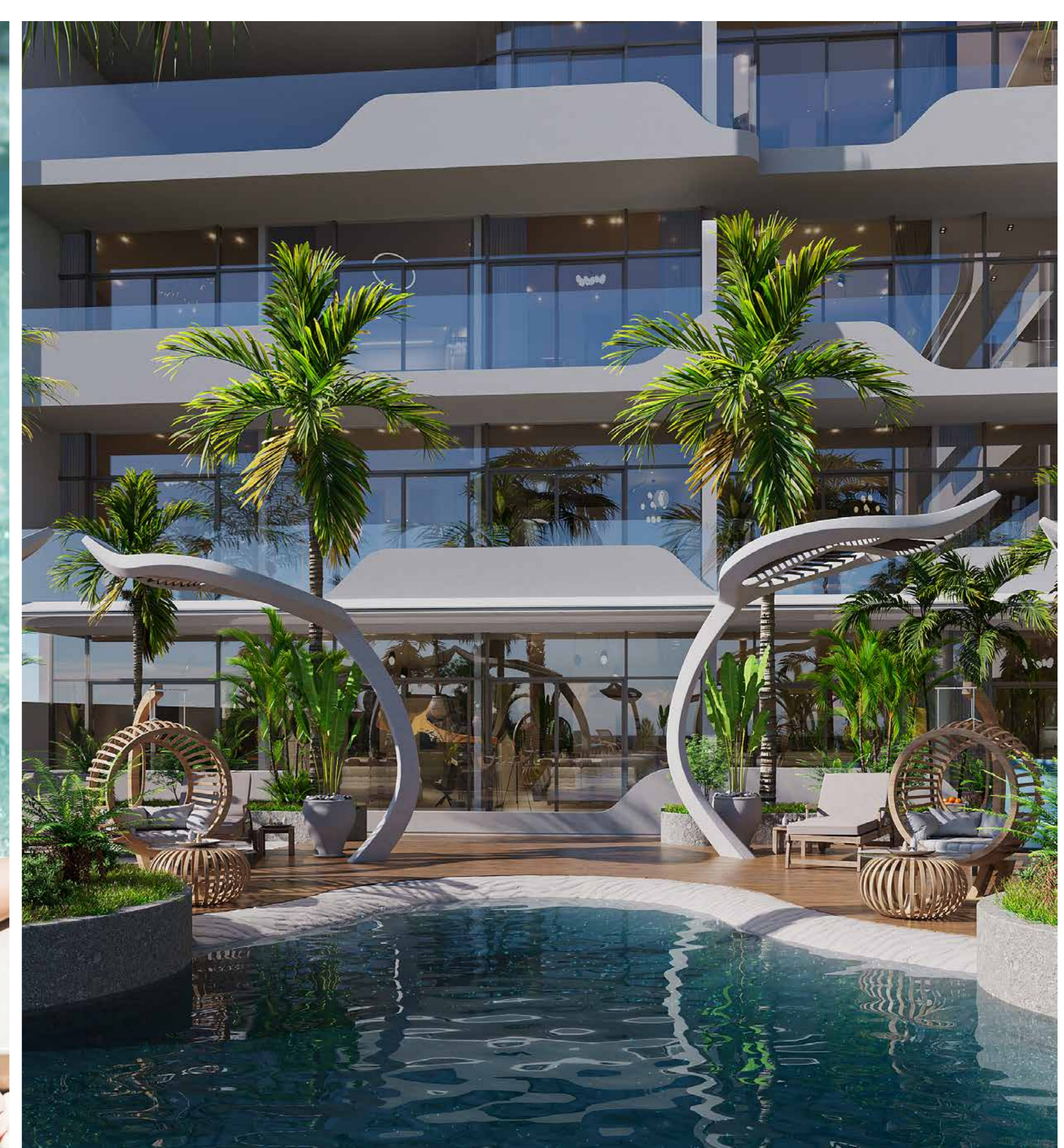
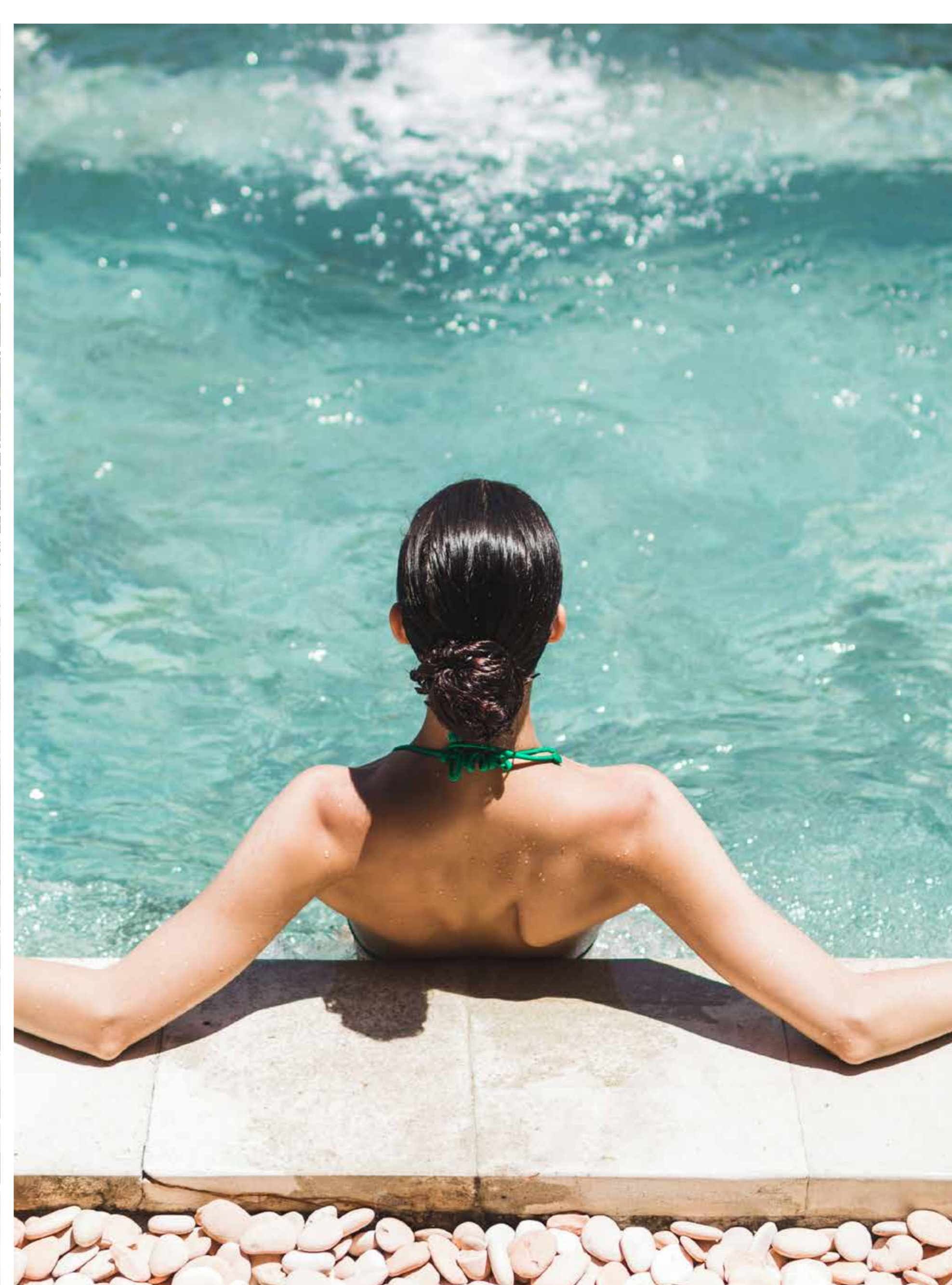
- Beach-style swimming pool
- Kids water park
- Jacuzzi

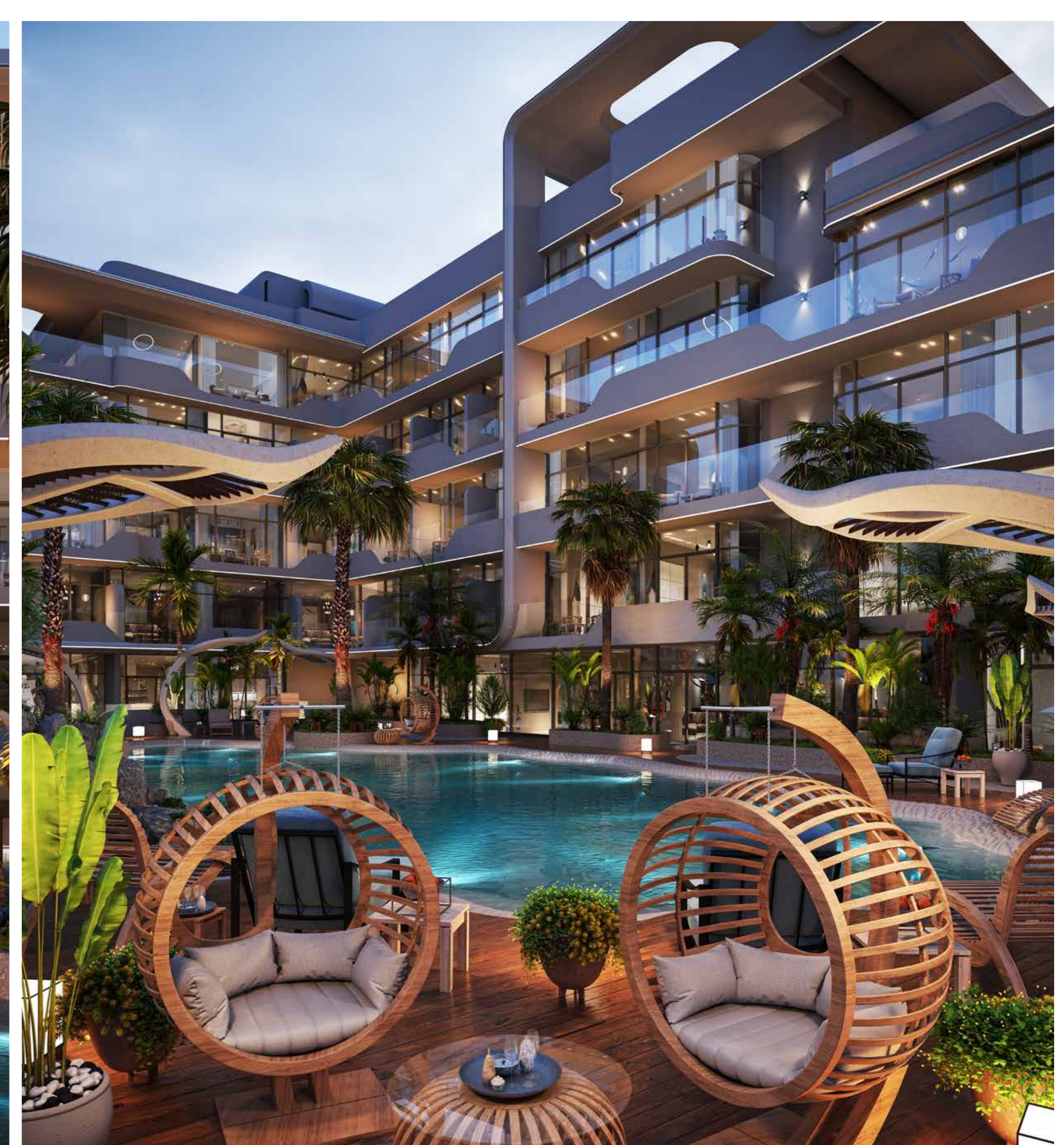




Lobby

TABEER
Developments







Level *Up*



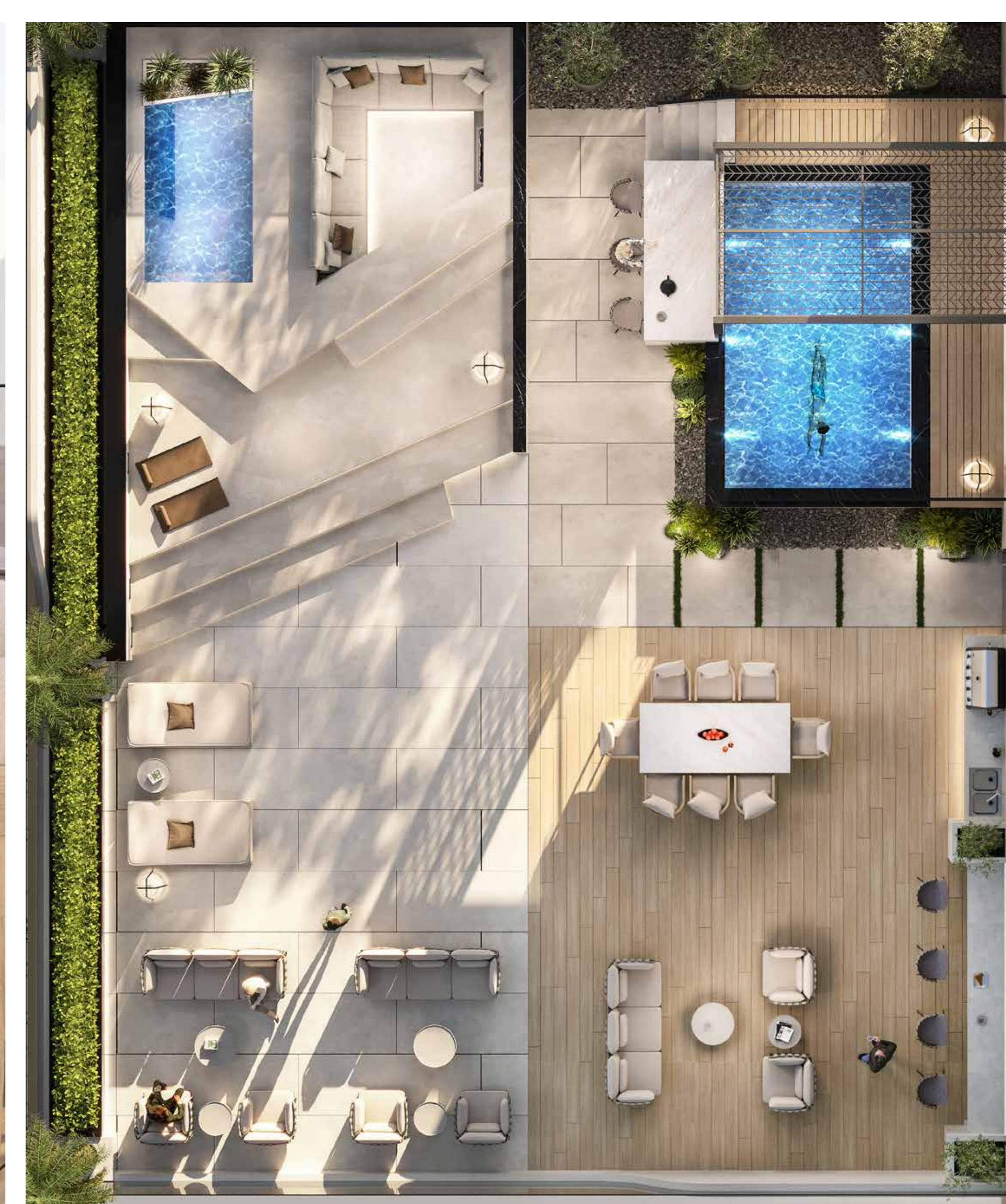
Life at 99 PARKPLACE gets better at every level.

Kick back and enjoy a movie at the rooftop cinema, or unwind in the plunge pool facing the sky.

Sky Deck Amenities

- Rooftop cinema
- Rooftop pool
- Kids play area
- BBQ area







Rooftop pool



Rooftop pool

Let your story
begin here...

Where you live is an expression of your vision. 99 PARKPLACE is a statement about your taste, your appreciation for the finer things, and your desire for a life that is exquisite, exceptional, and elite.

Step in, and let your story begin.

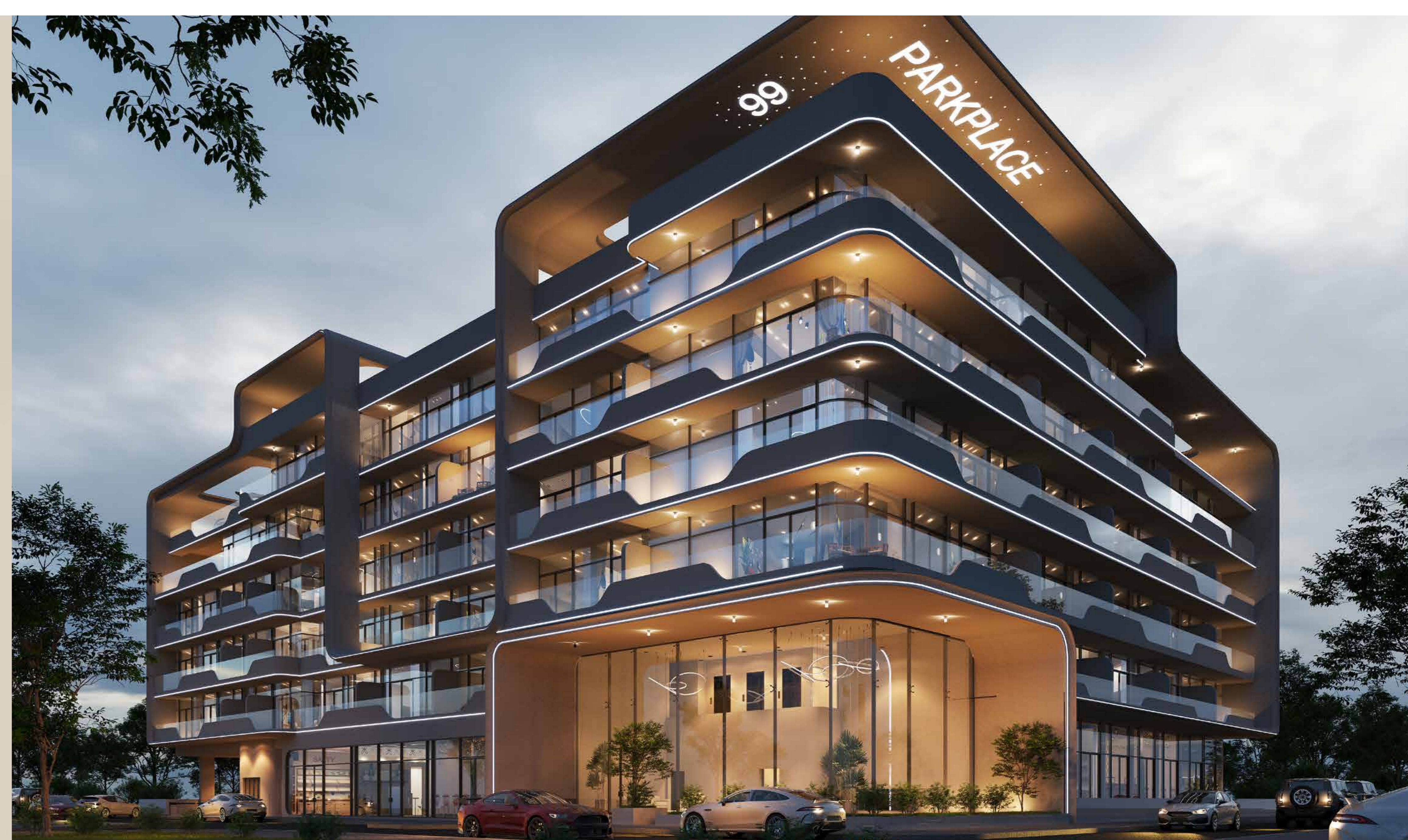


Project *Details*

A collection of apartment residences with designer interiors, fully equipped kitchens, and exceptional amenities.

PROJECT NAME	99 PARKPLACE
PROJECT TYPE	Residential Apartments
UNITS	99
LOCATION	Jumeirah Village Circle, Dubai
COMPLETION	December 2025

UNIT TYPES	NO. OF UNITS	SIZES (SQ.FT)
Studio Residences	43 Units	416–518
1 Bedroom + Study	14 Units	850–1,037
1 Bedroom	26 Units	737–1,037
2 Bedroom+ study	9 Units	1,288–1,504
2 Bedroom +study +plunge pool	7 Units	1,358–2,196



A close-up photograph of several large, vibrant green leaves, likely from a tropical plant like a Philodendfon. The leaves are covered in numerous small, glistening water droplets, suggesting a recent rain or mist. The lighting is soft, highlighting the texture of the leaf surfaces and the veins. The composition is a horizontal strip, with the text 'Floor Plans' overlaid on the left side.

Floor Plans



Studio Apartment

Second Floor 220

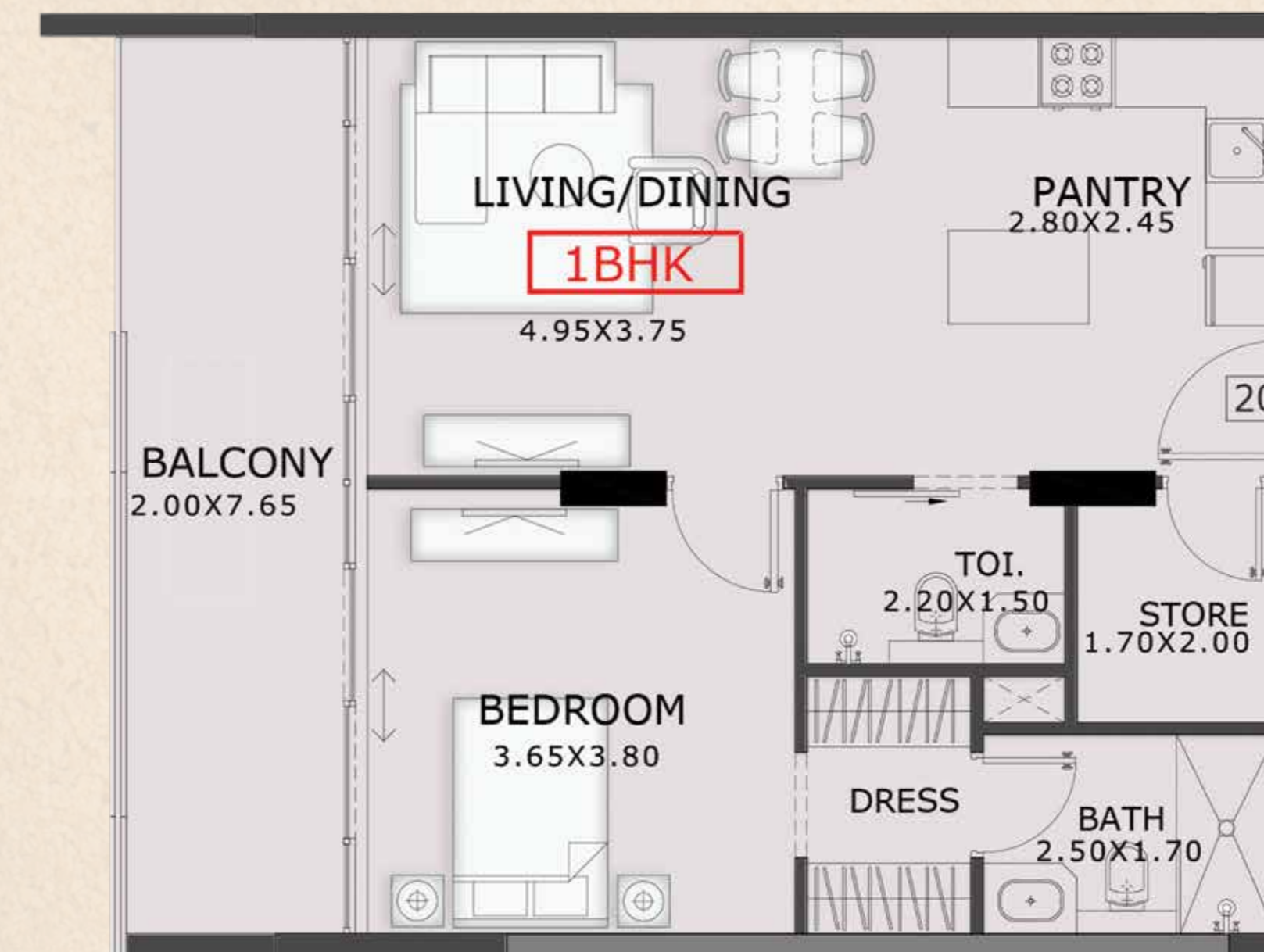
Suite Area	352 SQ.FT.
Terrace/Balcony	64 SQ.FT.
<hr/>	
Total Saleable Area	416 SQ.FT.



Disclaimer: All pictures, plans, layouts, information, data and details included in this brochure are indicative only may change at any time up to the final 'as built' status in accordance with the final designs of the project, regulatory approvals and planning permissions.

1 Bedroom Apartment

Second Floor 201



Suite Area	672 SQ.FT.
Terrace/Balcony	171 SQ.FT.
<hr/>	
Total Saleable Area	843 SQ.FT.



Disclaimer: All pictures, plans, layouts, information, data and details included in this brochure are indicative only may change at any time up to the final 'as built' status in accordance with the final designs of the project, regulatory approvals and planning permissions.



1 Bedroom Apartment

Second Floor 210

Suite Area	610 SQ.FT.
Terrace/Balcony	127 SQ.FT.
Total Saleable Area	737 SQ.FT.



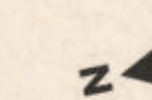
Disclaimer: All pictures, plans, layouts, information, data and details included in this brochure are indicative only may change at any time up to the final 'as built' status in accordance with the final designs of the project, regulatory approvals and planning permissions.



2 Bedroom Apartment

Third Floor 315

Suite Area	1107 SQ.FT.
Terrace/Balcony	193 SQ.FT.
Total Saleable Area	1300 SQ.FT.



Disclaimer: All pictures, plans, layouts, information, data and details included in this brochure are indicative only may change at any time up to the final 'as built' status in accordance with the final designs of the project, regulatory approvals and planning permissions.



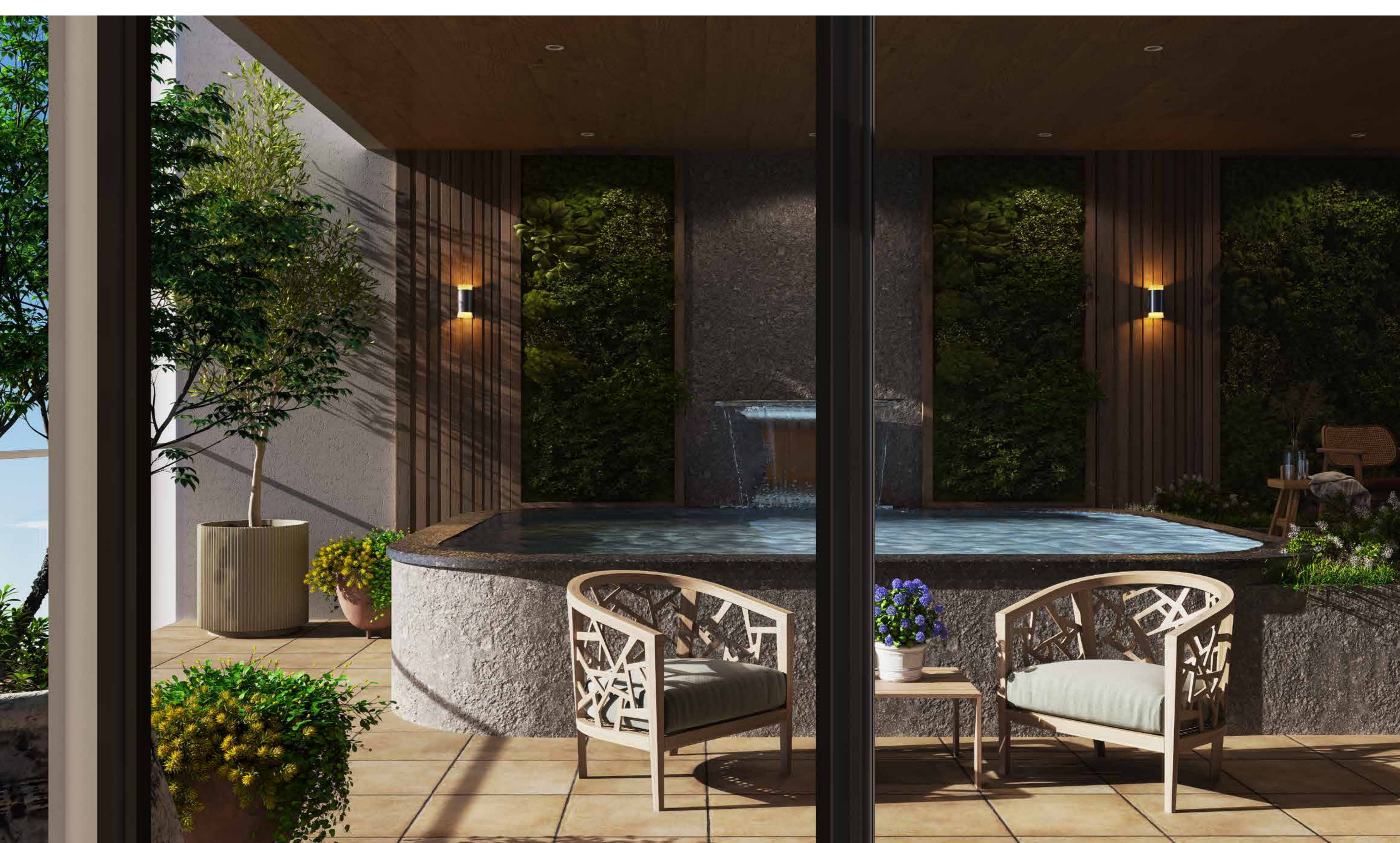
2 Bedroom Apartment

Fourth Floor 411

Suite Area	1101 SQ.FT.
Terrace/Balcony	1049 SQ.FT.
Total Saleable Area	2150 SQ.FT.



Disclaimer: All pictures, plans, layouts, information, data and details included in this brochure are indicative only may change at any time up to the final 'as built' status in accordance with the final designs of the project, regulatory approvals and planning permissions.





TABEER
Developments

Bringing
affordable luxury
to Dubai.

Welcome to Tabeer Developments, where a decade of expertise has sculpted our reputation as one of Dubai's premier property developers since 2014.

Since our inception, we have specialized in the creation of high-quality, affordable residential spaces, and setting new standards for superior living experiences.

Tabeer, meaning "interpretation" in Arabic, encapsulates our mission to transform the dreams and aspirations of our clients into tangible, extraordinary living spaces. Each development reflects our dedication to sustainable design, artistic expression, and groundbreaking ideas.

Our Portfolio



48 PARKSIDE



V2 TOWER



TABEER 1 – WARSAN VILLAGE



DRAGON VIEWS