

KETURAH

RESERVE

WELCOME TO KETURAH RESERVE TRANSFORMATIONAL LIVING
THROUGH THE DESIGN OF SPACE

Mohammed Bin Rashid City District 7 (MBR7)
25.2048° N, 55.2708° E

KETURAH RESERVE

BIO LIVING
DESIGN PROCESS

WELCOME TO KETURAH RESERVE

A transformational living through the design of space

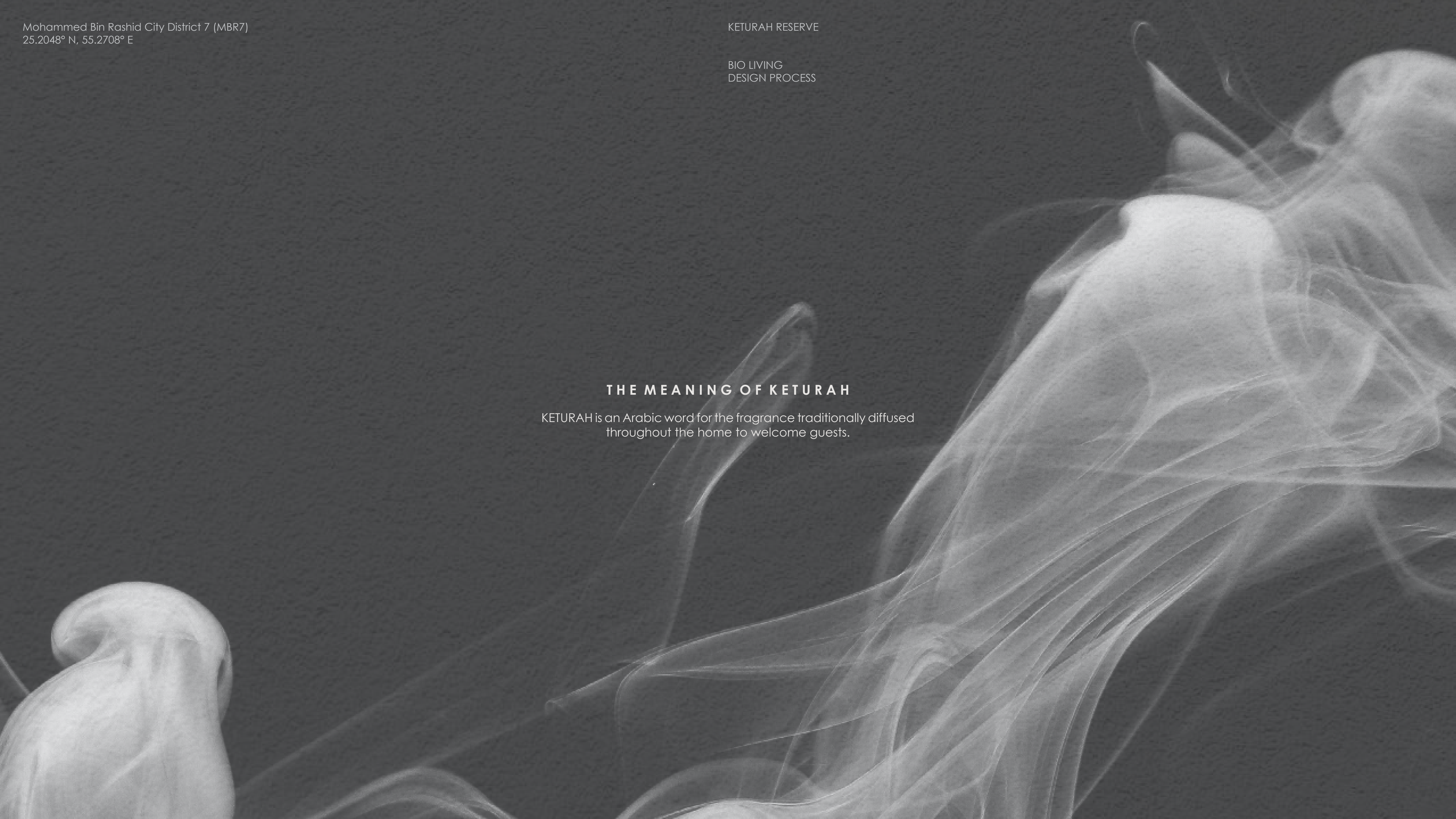
Mohammed Bin Rashid City District 7 (MBR7)
25.2048° N, 55.2708° E

KETURAH RESERVE

BIO LIVING
DESIGN PROCESS

THE MEANING OF KETURAH

KETURAH is an Arabic word for the fragrance traditionally diffused throughout the home to welcome guests.



PORTFOLIO

KETURAH RESERVE

BIO LIVING
DESIGN PROCESS

THE BRIEF

keturah Reserve

Meydan

Dubai

Keturah Reserve at Meydan

DESIGN CONCEPT

Master Plan

Plots Details

Mohammed Bin Rashid City District 7 (MBR7)
25.2048° N, 55.2708° E

KETURAH RESERVE

BIO LIVING
DESIGN PROCESS

THE MESSAGE

"Keturah Reserve is uniquely conceived and designed.

Each detail has been crafted with care to elevate and enrich the lives of every generation of our residents.

Our vision is for Keturah Reserve residents to be the happiest, best fulfilled people in Dubai."

Talal M. Al Gaddah
Founder and CEO



THE BRIEF

Dubai is the capital of innovation, one of the most dynamic and exciting cities in the world.

Equally, Keturah Reserve at Meydan is the most innovative and exciting New Luxury development in Dubai, with a brand-new concept, transformational living through the design of space.



All room sizes and floor plans measurements are approximate and may vary per unit. Floor plans and unit features are preliminary and proposed only. Developer reserves the right to modify, revise, change or withdraw any or all of same in its sole and absolute discretion and without notice. All furnishings, finishes, appliances, counters, soffits, floor coverings and other matters of detail, including, without limitation, items of finish and decoration are conceptual only and are not necessarily included in each Unit. Consult your Agreement and the Prospectus for details. © 2017 [Company Name]

KETURAH RESERVE, NEW LUXURY

New Luxury is raw and silent. It elevates and empowers, evoking the profound emotional well-being of mind and body through the design of interior, exterior and personal space. It connects residents with the surrounding nature through Bio Living.



All room sizes and floor plans measurements are approximate and may vary per unit. Floor plans and unit features are preliminary and proposed only. Developer reserves the right to modify, revise, change or withdraw any or all of same in its sole and absolute discretion and without prior notice. Depictions of furnishings, finishes, appliances, counters, soffits, floor coverings and other matters of detail, including, without limitation, items of finish and decoration are conceptual only and are not necessarily included in each Unit. Consult your Agreement and the Prospect us for items included with your Unit.



BIO LIVING AT KETURAH RESERVE

Bio Living is inspired by Biophilic Design, the concept of creating architecture and interiors to enable residents to connect with the surrounding nature. All five human senses are engaged by nature, improving physical and mental well-being and adding real value to residents' lives. Bio Living respects all life forms, flora, fauna and human.

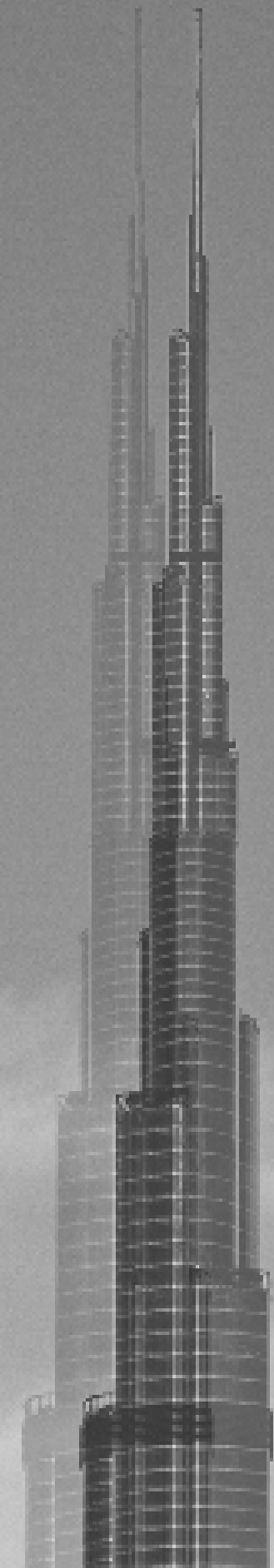


All room sizes and floor plans measurements are approximate and may vary per unit. Floor plans and unit features are preliminary and proposed only. Developer reserves the right to modify, revise, change or withdraw any or all of same in its sole and absolute discretion and without prior notice. Depictions of furnishings, finishes, appliances, counters, soffits, floor coverings and other matters of detail, including, without limitation, items of finish and decoration are conceptual only and are not necessarily included in each Unit. Consult your Agreement and the Prospectus for items included with your Unit.

WHY DUBAI?

Dubai is the City of the Future, one of the most exciting, inspirational and successful cities in the world, the global headquarters of crypto currency in DMCC.

Its thriving expat community of over 200 nationalities comprises 80% of the population. Dubai is a pioneer for future urban living with sustainable development an integral part of its Green 2040 Vision.

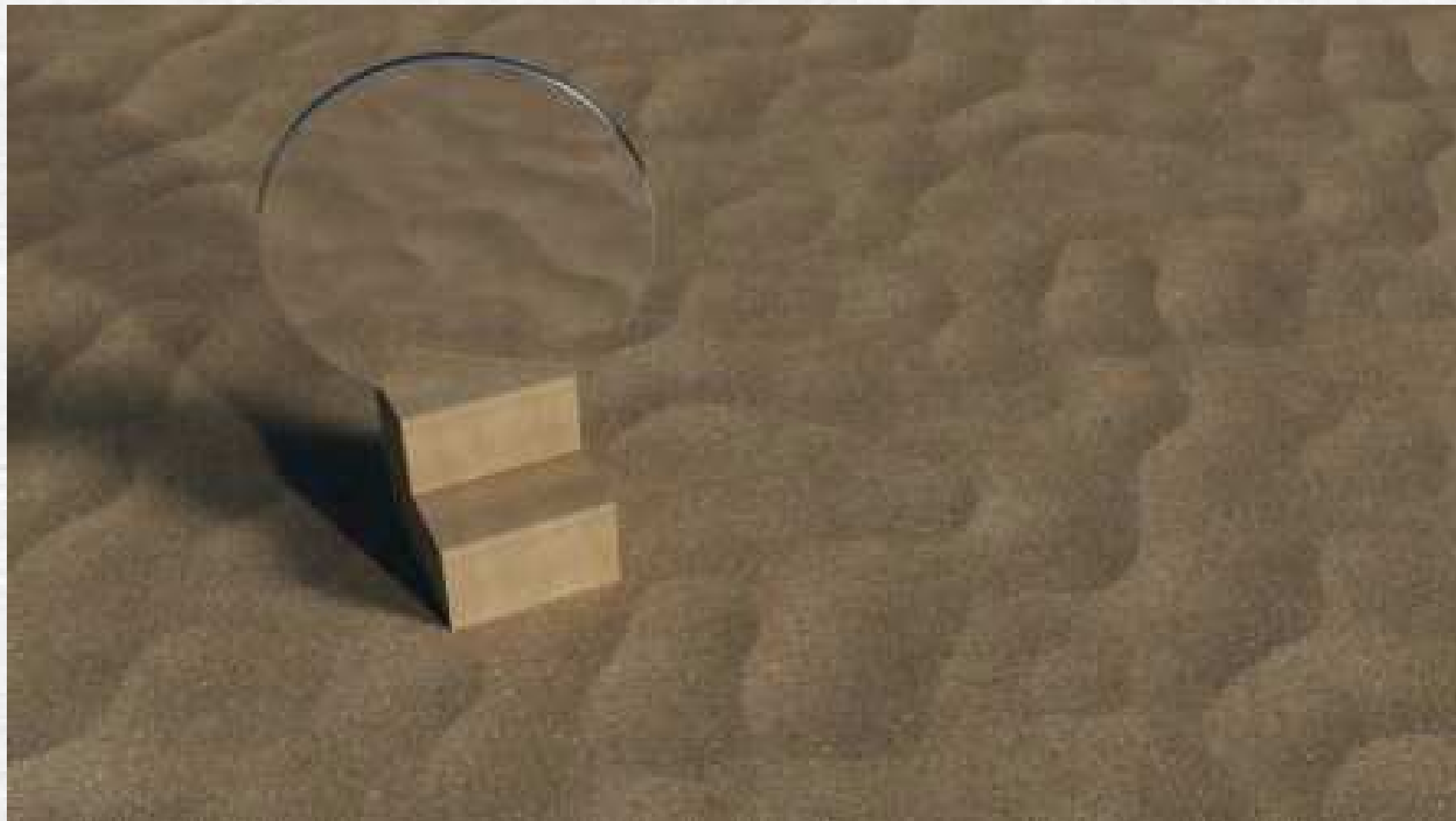


THE MEYDAN STORY

Meydan is an Arabic word for an open, urban space for public discussion that traces its origin to the Ottoman Empire.

Keturah Reserve at Meydan is one of Dubai's most exclusive addresses. Meydan is a new sustainable and environmentally friendly development owned by His Highness Sheikh Mohammed bin Rashid Al Maktoum.

It encloses the world-renowned Meydan Racecourse and Grandstand, home of the Dubai World Cup horse racing event.



KETURAH RESERVE AT MEYDAN

Keturah Reserve is uniquely located at Meydan, the only residential development in Dubai with a direct 7-minute link to Downtown, with four separate exits onto the city's main thoroughfares.

1. KETURAH RESERVE BY MAG
2. MAG LOGISTICS
3. MAG 318
4. BURJ KHALIFA
5. DUBAI WATER CANAL
6. MEYDAN ONE MALL
7. MEYDAN GRANDSTAND
8. MEYDAN GOLF COURSE
9. EMIRATES FINANCIAL TOWERS BY MAG
10. DUBAI DESIGN DISTRICT
11. DUBAI SANCTUARY
12. AL AIN / DUBAI HIGHWAY
13. AL KHAIL HIGHWAY
14. AL MEYDAN ROAD
15. SHEIKH ZAYED ROAD
16. ETIHAD RAIL MAIN STATION



ACCESSIBILITY

- Dubai International Airport, 21 minutes
- Downtown, 7 minutes
- DIFC Financial Center, 12 minutes
- Business Bay, 15 minutes
- Dubai Design District, 15 minutes
- The Beach, 20 minutes
- Blue Waters, 30 minutes

ART AND CULTURE

- Museum of The Future, 20 minutes
- Dubai Public Library, 25 minutes
- OliOli® - Experiential Play Museum for Kids, 20 minutes
- Butterfly Garden, 30 minutes
- Alserkal Avenue, 20 minutes

MALLS

- Dubai Mall, 20 minutes
- Dubai Hills Mall, 15 minutes
- Meydan One Mall, 15 minutes

EDUCATION

- Gems-Willington-Private School, 17 minutes
- The English College, 15 minutes
- Dubai International Private School, 17 minutes
- Hartland International School Dubai, 16 minutes
- Swiss International Scientific School, 15 minutes

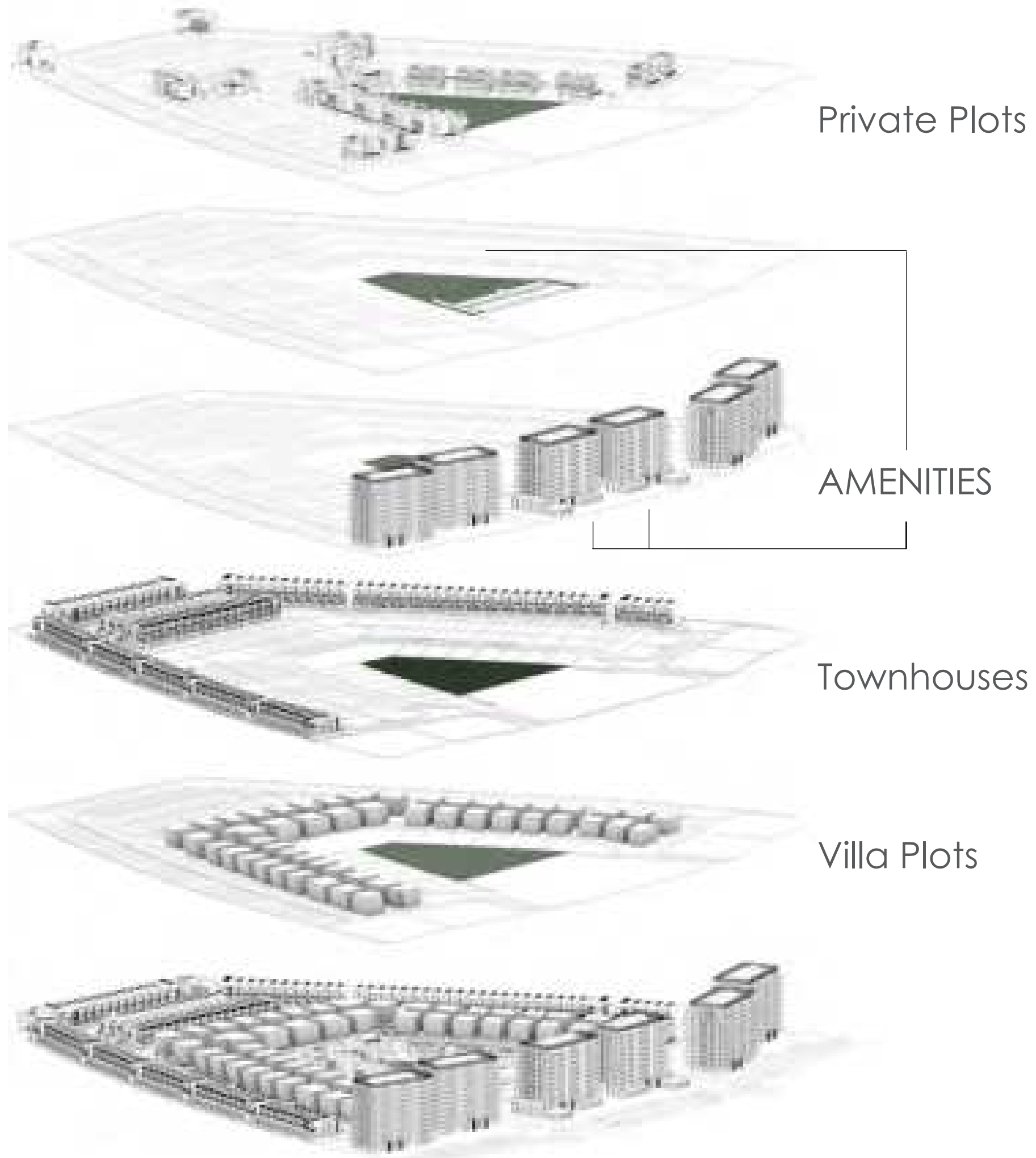
HEALTHCARE

- Medcare Hospital, 15 minutes
- Emirates Hosp. Clinics, 17 minutes
- Mediclinic City Hospital, 19 minutes
- American Hospital Dubai, 19 minutes
- King's College Hospital, 9 minutes

GOLF CLUBS

- Meydan Golf, 10 minutes
- Dubai Hills Golf Club, 15 minutes
- Emirates Golf Club, 24 minutes





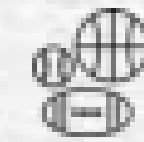
KETURAH RESERVE

DESIGNED FOR EVERY GENERATION

Every resident, women, men and children of all ages will find their perfect niche in Keturah Reserve.

DESIGNED FOR ALL LIFE SPECIES

Keturah Reserve is landscaped with indigenous trees and plants that need little water to thrive in the local climate, attracting birds, animals and insects.



SPORTS

- GYM
- Cross Fit
- Tennis
- Football
- Swimming
- Basketball
- Handball
- Squash
- Martial Arts
- Padel Tennis
- Studios
- Gymnastics
- Shooting
- Fencing



SUPPLEMENTARY SERVICES

- 18+ Roof Pool
- Family & Kids Pool
- Ladies Pool
- Sauna & SPA
- Family Lounges
- Cinema
- Nursery
- Clinic
- Kids Park
- Green Areas
- Jogging Tracks
- Co-Working Stations
- Gaming & VR Areas



FOOD & BEVERAGE

- Restaurants
- Kiosks
- Juice Bars



CULTURAL

- Art School for kids & adults

KETURAH RESERVE

BIO LIVING
DESIGN PROCESS

PAYMENT IN CRYPTO CURRENCY

Keturah Reserve offers buyers the option of buying their property in crypto currency.

Accepted currencies:

- USDT
- Bitcoin-BTC
- Ethereum-ETH
- USDC
- Ripple-XRP
- Litecoin-LTC
- Bitcoin Cash -BCH
- Chainlink-Link
- Uniswap-UNI
- Compound-COMP
- Chiliz-CHZ
- Fantom Token-FTM
- AAVE
- Avalanche-AVAX
- Maker-MKR
- Yearn Finance-YFI
- Polygon-MATIC
- Sandbox-SAND
- Stellar Lumens-XLM
- EOSIO-EOS

The Keturah Reserve Payment Plan

20%	Date of Purchase
30%	After 90 days
5%	After 180 days
5%	After 270 days
10%	After 360 days
5%	After 450 days
10%	After 540 days
5%	After 630 days
10%	After 720 days