



بارك فيو
PARK VIEW
الريم | AL REEM

WHERE COMFORT MEETS
elegance

PARK VIEW
پارک فیو



TABLE OF CONTENT

02

Abu Dhabi

03

The Developer

04

Al Reem Island

05

Park View

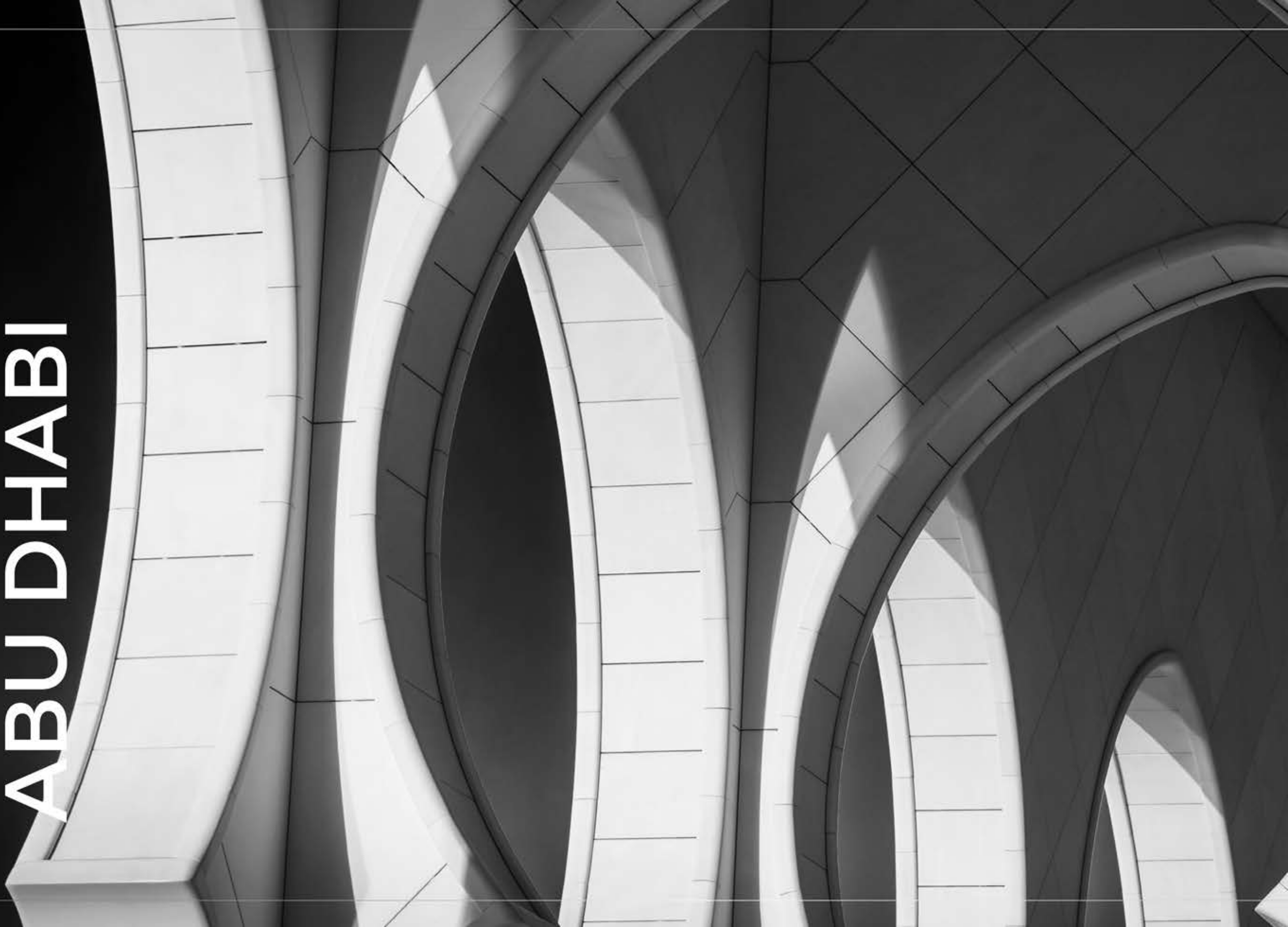
06

Location

07

Payment Plan

ABOUT ABU DHABI



The capital of the UAE, where happiness is the essence of the lifestyle, Abu Dhabi is a world-leading destination that offers an integrated lifestyle with a unique blend of modernity and long-standing local heritage, giving you a true sense of warmth and hospitality.

This friendly city is an address of excellence, inspiring and exciting the world with rapid development and prosperous economic growth that propels the lifestyle. This enchanting city houses major cultural and religious landmarks such as the Sheikh Zayed Grand Mosque, Emirates Palace, Al Etihad Towers and the Louvre Museum in Saadiyat. It also offers a variety of events, arts, and hosts entertainment destinations such as Ferrari World, Yas Waterworld, and Warner Brothers. The unique characteristics of the city combine to make Abu Dhabi the preferred place to work and live.

The project is carefully designed to reflect the detailed economic plan of the Abu Dhabi Vision 2030, which has created robust opportunities for the private sector to participate and join in shaping a bright future and sustainable economic development for the Emirate of Abu Dhabi.

THE DEVELOPER



MESAB LIMITED

Mesab has found a strong foundation and a safe haven to lay its future development plans in Abu Dhabi. Established in February 2015, Mesab Limited is a licensed sub-developer of municipal affairs in the Emirate of Abu Dhabi that specializes in building and developing real estate and community developments. Mesab has a team of highly skilled real estate developers committed to success and quality to build the most successful and profitable real estate projects with a high return of investment.

Honesty, Commitment, Integrity and Innovation: These are the core values that Mesab is based upon. With these foundational values, they have built a trusted reputation and strong relationships with their partners and clients. With the launch of the new Park View Tower, Mesab is reviving the concept of real estate development at the highest level.

LIFE ON
AL REEM ISLAND



A high-end cosmopolitan address

Al Reem Island gives you the opportunity to live in an integrated community with some of the most important health, educational and entertainment options in the region. Every home has stunning views of the most beautiful landscapes incorporating the waterfront of Reem Island, the urban skyline, mangrove forests, and charming canals. Life on Al Reem offers you a refined lifestyle and a unique, modern experience.

پارک فیلو
PARK VIEW
الریم | AL REEM



WHERE COMFORT MEETS
elegance

Park View located in the heart of Shams Abu Dhabi, Park View Tower is an elegant building with a modern design of thirty-five residential floors. The building's 128 apartments offer comprehensive and sophisticated living with units ranging from two to three bedroom apartments and duplexes with high quality finishing that offers maximum comfort. The elegant design of Park View Tower and the architectural vision ensured the greatest possible light, providing charming views and the intelligent use of space to meet the needs of all residents.

The tower features a luxurious entrance, excellent lighting and unique design, panoramic lifts and spacious terraces overlooking the most beautiful landscape around Reem Island such as the central park, canal, and mangrove forests. The tower is strategically located in the center of the island and features many of the finest amenities including a tropical swimming pool, a creative play area, a panoramic gym, Jacuzzi and sauna.



Stimulate your senses

Park view living evokes the feeling of calmness,
positivity, and happiness.





Invigorate all

your senses on a thrill filled adventure
with your family

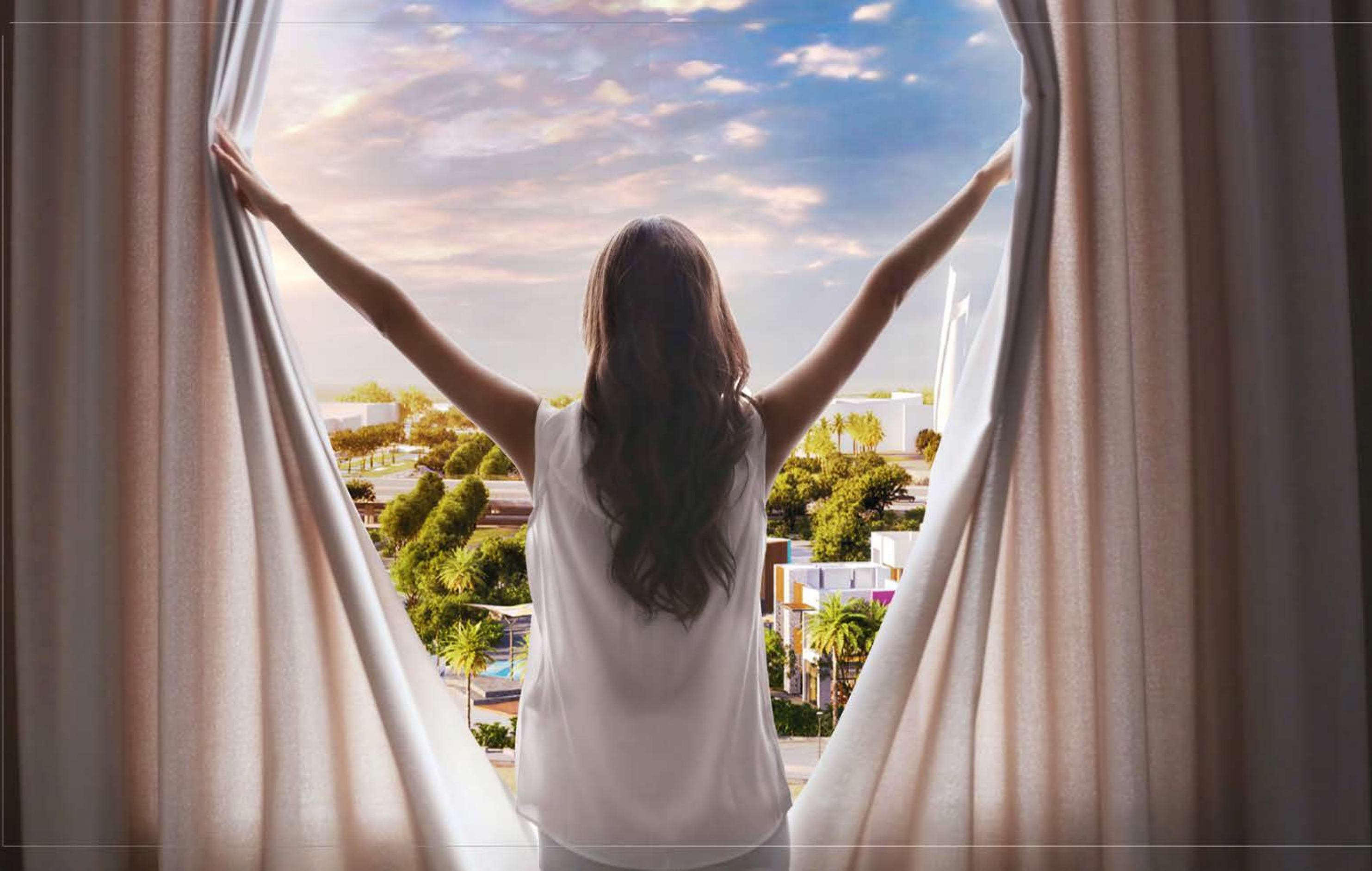




Collaborate

A healthy lifestyle that provokes happiness and a place to get together and collaborate with like-minded families.







THE VIEWS

The views from your terrace are something to behold, where the sun beams from every angle, recharging you with positive energy while enjoying the serene ambiance of nature.

Green Lushes

Al Reem Island is where residents of Park View live in a relaxed environment that simultaneously caters to an active lifestyle. The green veranda, luxury facilities, and cheerful feel is the perfect place to help your family settle, creating memories and inspiring relationships in a new community.







you cannot walk
a straight line
WITHOUT
a heart prepared
to follow

9



Behold Internal Bliss

Messab has captured a sense of calm and comfort in homes with spacious interiors, floor-to-ceiling windows, and expansive balconies that together allow plenty of sunlight to brighten your home.

Each home is distinguished by a double-wide wooden entrance, walls with built-in cabinets, marble kitchens and bathrooms, and bedrooms containing storage space and their own private bathroom. Rest assured that your new home is equipped with everything you need to live in luxury.





AL MARYAH ISLAND

THE GALLERIA

ROSEWOOD ABU DHABI

CLEVELAND CLINIC ABU DHABI

ABU DHABI MALL

BEACH ROTANA HOTEL

MARINA SQUARE

MANGROVES

REPTON SCHOOL

ABDULRAHMAN CENTRAL PARK

UNION NATIONAL BANK

CITY OF LIGHTS

SUN&SKY TOWERS

SIAMS BOUTIK

GATE TOWERS

REPTON SCHOOL

SORBONNE ABU DHABI UNIVERSITY

MARINA

15
MINUTES

Louvre Museum

10
MINUTES

Abu Dhabi
Downtown

20
MINUTES

Saadiyat Beach

6
MINUTES

Abu Dhabi Mall

9
MINUTES

Galleria Mall

8
MINUTES

Reem Mall

9
MINUTES

Cleveland Clinic

6
MINUTES

Paris Sorbonne
University

10%
Down Payment

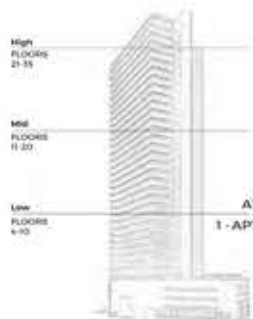
90%
Handover
June 2019



BEDROOM TYPE A1



Internal Size	131.57 M ² 1,416 sq.ft
Balcony Size	28 M ² 301 sq.ft
Total Size	160 M ² 1,718 sq.ft
Bedroom	2
Bathroom	4
View	Park & Mangrove
Maidroom	1



Key Plan



Disclaimer : Note that the floor plan was produced prior to the completion of construction and is indicative only and not to scale. Changes may be made during the development and areas, fittings, finishes and specifications are subject to change without notice in accordance with the provision of the Contract of Sale. The furniture depicted is not included with any sale and should not be taken to indicate the final positions of power points, TV connections etc. Prospective purchasers must rely on their own enquiries from time to time. Bulkheads necessary for services and structure are not depicted.



Explore Comfort in a Spacious
2+Maid Master Bedrooms Apartment

TYPE A1
4TH Floor

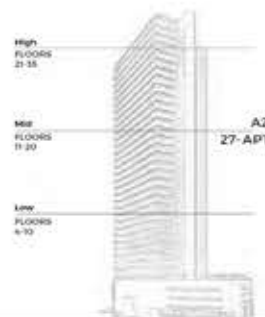
A premium 2 master bedroom layout located on the podium of the tower, overlooking the facilities with a rich blend of sophisticated tones evoking the feeling of comfort, with an open spacious terrace overlooking a stunning view of the mangrove, swimming pool, Reem central park & access to full facilities.



BEDROOM TYPE A2



Internal Size	132 M ² 1,421 Sq.ft
Balcony Size	28 M ² 301 Sq.ft
Total Size	160M ² 1,722 Sq.ft
Bedroom	2
Bathroom	4
View	Park & Mangrove
Maidroom	1



Disclaimer : Note that this floor plan was produced prior to the completion of construction and is indicative only and not to scale. Changes may be made during the development and areas, fittings, finishes and specifications are subject to change without notice in accordance with the provision of the Contract of Sale. The furniture depicted is not included with any sale and should not be taken to indicate the final positions of power points, TV connections etc. Prospective purchasers must rely on their own enquiries from time to time. Bulkheads necessary for services and structure are not depicted.

PARK VIEW
AL REEM
TYPE A2
5TH - 31ST



Live in Luxury and active environment

TYPE A2
5TH - 31ST Floor

Experience class in a relaxed, luxury, active environment in this 2+Maid Master Bedrooms apartment overlooking the sea, while making memories that last a lifetime. In addition to a supremely comfortable living area overlooking the mangroves, a spacious dining area, and lavish spacious terraces.

بارك فيو
PARK VIEW
AL REEM | الريم



BEDROOM TYPE A3



Internal Size	120M ² 1,292 Sq.ft
Balcony Size	25 M ² 269 Sq.ft
Total Size	145 M ² 1,561 Sq.ft
Bedroom	2
Bathroom	3
View	Park & Sea
Maidroom	0



Disclaimer : Note that this floor plan was produced prior to the completion of construction and is indicative only and not to scale. Changes may be made during the development and areas, fittings, finishes and specifications are subject to change without notice in accordance with the provision of the Contract of Sale. The furniture depicted is not included with any sale and should not be taken to indicate the final positions of power points, TV connections etc. Prospective purchasers must rely on their own enquiries from time to time. Bulkheads necessary for services and structure are not depicted.

PARK VIEW
AL REEM
TYPE A3
5TH - 31ST



Enjoy Stunning Views from your
2 Master Bedrooms Apartment

TYPE A3
5TH - 31ST Floor

A Touch of luxury. A dash of convenience and a whole lot of perfection make this ideal home. From your spacious terrace. Get energized by watching sparkling water overlooking the sea & canal directly from bedroom

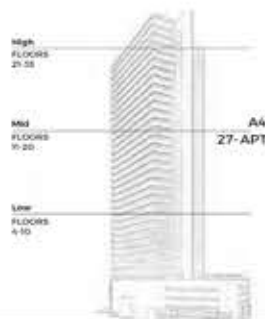




BEDROOM TYPE A4



Internal Size	88 M ² 944 Sq.ft
Balcony Size	21 M ² 226 Sq.ft
Total Size	109 M ² 1,170 Sq.ft
Bedroom	2
Bathroom	3
View	Community & Sea
Maidroom	0



Disclaimer : Note that this floor plan was produced prior to the completion of construction and is indicative only and not to scale. Changes may be made during the development and areas, fittings, finishes and specifications are subject to change without notice in accordance with the provision of the Contract of Sale. The furniture depicted is not included with any sale and should not be taken to indicate the final positions of power points, TV connections etc. Prospective purchasers must rely on their own enquiries from time to time. Bulkheads necessary for services and structure are not depicted.



Redefine Serenity. Luxury
Sea Breeze Apartment.

TYPE A4
5TH - 31ST Floor

Elegant home boasts a spacious balcony connecting the internal space overlooking the sea & canal with the vibrant and dynamic surroundings. Rejoice in the fresh breeze of the sea air from your bedroom and the transcendent blue of the majestic sky

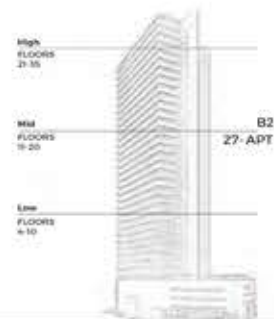


3

BEDROOM
TYPE B2



Internal Size	202 M ² 2,176 Sq.ft
2 Balcony Size	103 M ² 1,103 Sq.ft
Total Size	305 M ² 3,279 Sq.ft
Bedroom	3
Bathroom	5
View	Park & Mangrove
Maidroom	1



Key Plan



Disclaimer : Note that this floor plan was produced prior to the completion of construction and is indicative only and not to scale. Changes may be made during the development and areas, fittings, finishes and specifications are subject to change without notice in accordance with the provision of the Contract of Sale. The furniture depicted is not included with any sale and should not be taken to indicate the final positions of power points, TV connections etc. Prospective purchasers must rely on their own enquiries from time to time. Bulkheads necessary for services and structure are not depicted.

PARK VIEW
AL REEM
TYPE B2
5TH - 31ST



Recreate your lifestyle

TYPE B2
5TH - 31ST Floor

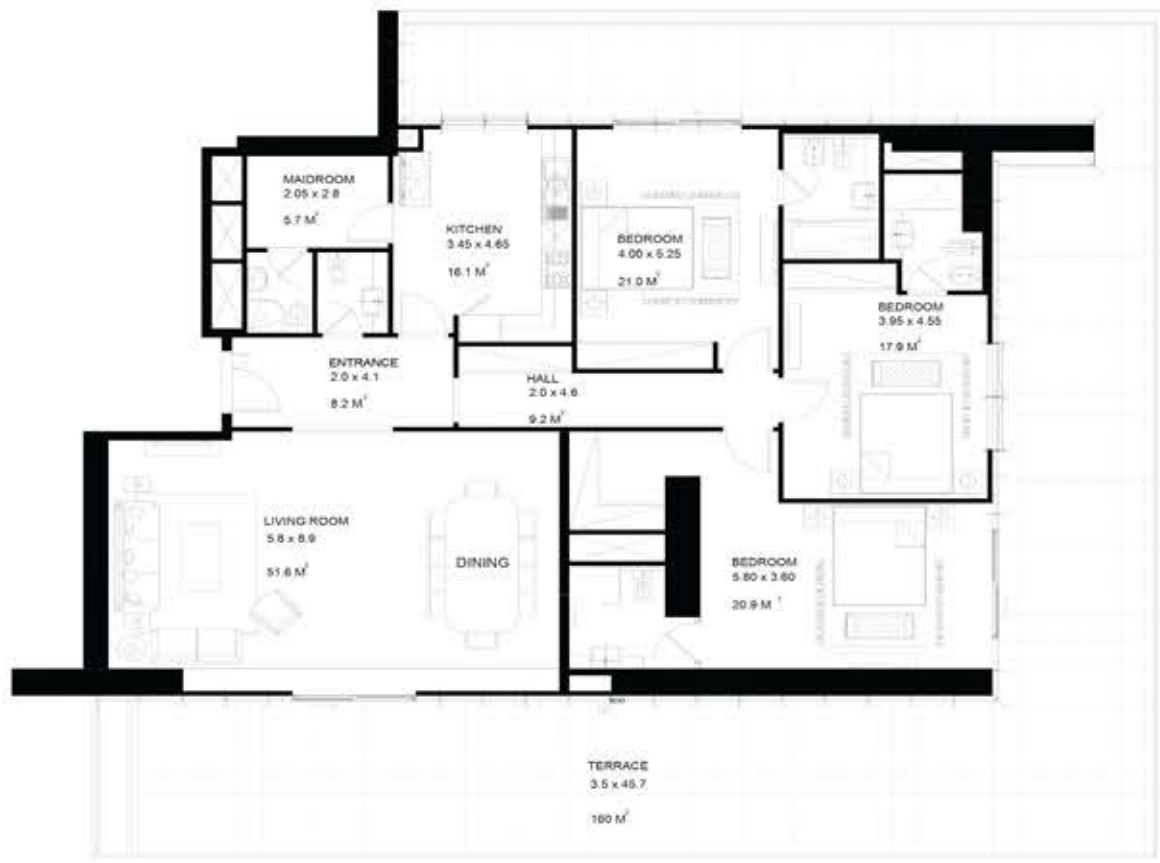
Indulge in a luxurious high-end apartment. extraordinary environment with the best views featuring 3 bedrooms. while enjoying sea and mangrove. Al Reem Park, Shams Abu Dhabi views from your spacious two big terraces surrounding your home.



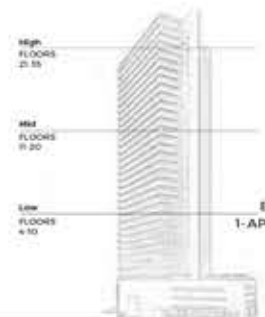


3

BEDROOM
TYPE B1



Internal Size	188 M² 2,027 Sq.ft
Balcony Size	160 M² 1,722 Sq.ft
Total Size	348 M² 3,749 Sq.ft
Bedroom	3
Bathroom	5
View	Park & Mangrove
Maidroom	1



Disclaimer : Note that this floor plan was produced prior to the completion of construction and is indicative only and not to scale. Changes may be made during the development and areas, fittings, finishes and specifications are subject to change without notice in accordance with the provision of the Contract of Sale. The furniture depicted is not included with any sale and should not be taken to indicate the final positions of power points, TV connections etc. Prospective purchasers must rely on their own enquiries from time to time. Bulkheads necessary for services and structure are not depicted.



Follow the market's new concept ! Stimulate your senses in a 3+Maid Master Bedrooms apartment with breathtaking Mangrove, Al Reem Park, Facilities, & AD Gate district.

TYPE B1
4TH Floor

A 3+ Maid bedroom apartment located on the podium will Create a healthy lifestyle that stimulate your family's sense of wellbeing. With spacious terraces that offers scenic views of the mangrove forest. The urban skyline, and AD District. As well as enjoying an exquisite and tranquil views of your landscaped garden.



