

Floorplans & Specifications

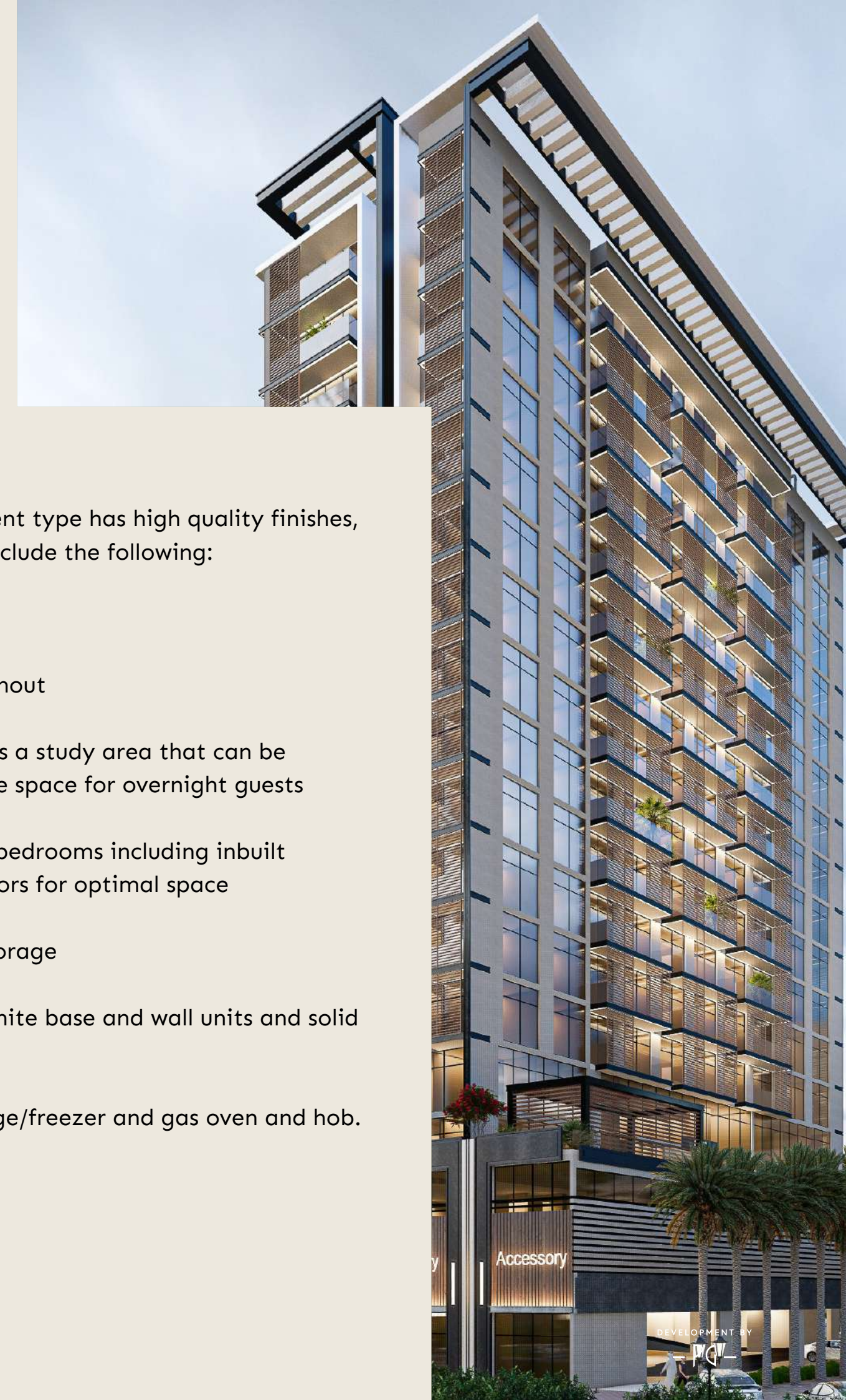
At PG ONE at Al Furjan, we have paid meticulous attention to detail in designing your new home, ensuring it meets the highest standards. You can have peace of mind knowing that your new residence is not only comfortable and liveable but also a solid investment. We've taken care to create a space that provides both a cozy living environment and long-term value.

Apartment types

- > 3-Bedroom duplex apartments with private elevator, pool and garden
- > 2 Bedroom
- > 1 Bedroom
- > Studio

Every part of each apartment type has high quality finishes, fittings and features that include the following:

- > Neutral elegant palette
- > Ceramic floor tiles throughout
- > Apartment type A includes a study area that can be transformed into a private space for overnight guests
- > Integrated storage in all bedrooms including inbuilt wardrobes with sliding doors for optimal space
- > Bathrooms with inbuilt storage
- > Kitchen with handleless white base and wall units and solid counter top
- > Inbuilt washer/dryer, fridge/freezer and gas oven and hob.



Apartment (3BHK) – 101

3 Bedroom Duplex (lower floor)

FLOORPLAN

- > Duplex garden apartments
- > Family living over 2 floors
- > Open plan living and dining area
- > 3 x ensuite double bedrooms
- > Separate kitchen & laundry
- > Guest bathroom
- > Maid's quarters with independent bathroom
- > Private garden with pool
- > Private elevator

UNIT AREA

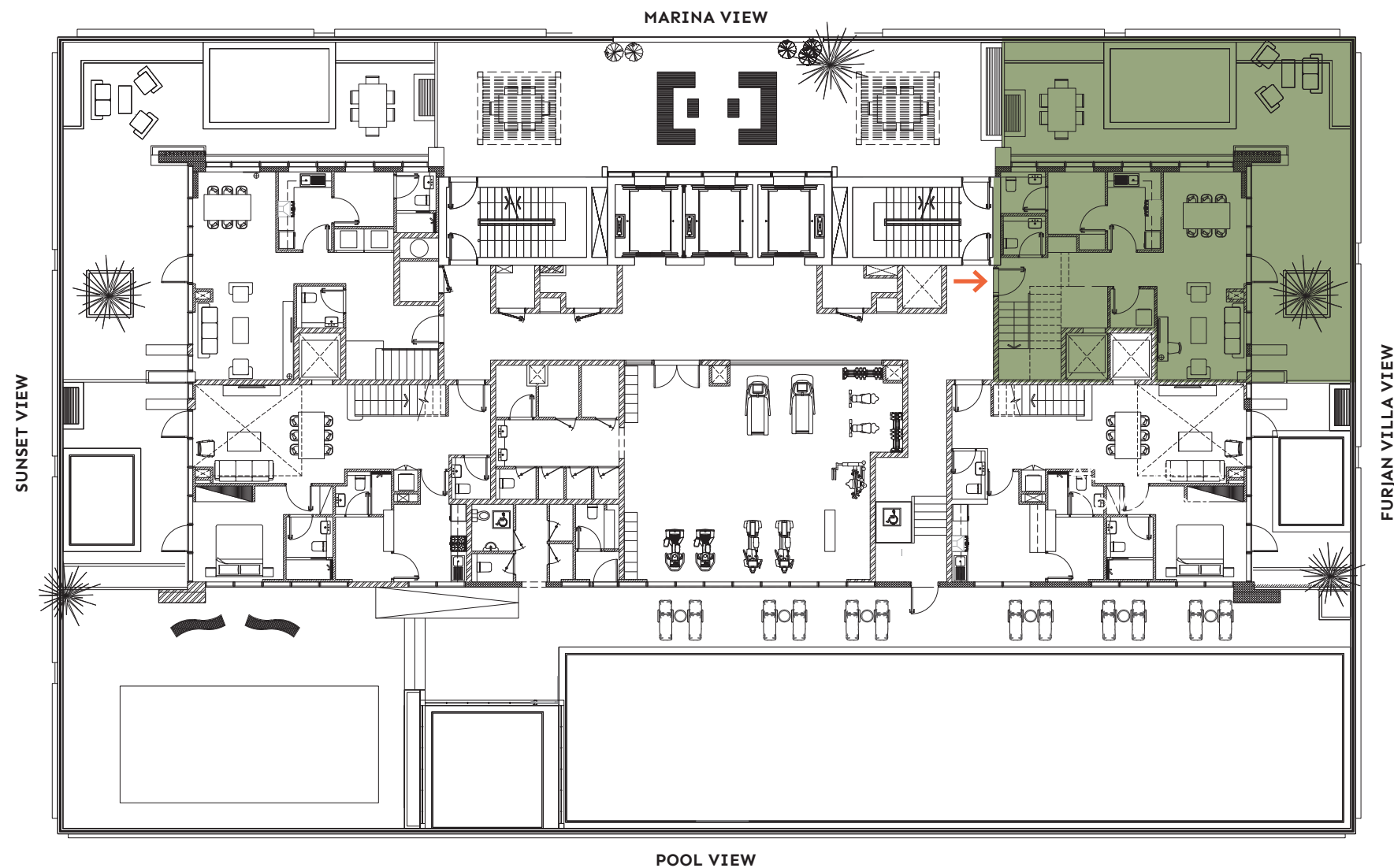
Suite Area 1758.82 sqft
Private Garden Area 1061.32 sqft

TOTAL AREA 2820.14 sqft



UPPER FLOOR
(SEE NEXT PAGE)

TYPICAL FLOORPLAN – LOWER FLOOR



DISCLAIMER: Drawings are provided by our consultants. All dimensions, features and amenities are approximate at time of printing. Actual area may vary from stated area. The developer reserves the right to make revisions to the Floorplans and any features, materials and dimensions mentioned without further notice.

Apartment (3BHK) – 101

3 Bedroom Duplex (upper floor)

FLOORPLAN

- > Duplex garden apartments
- > Family living over 2 floors
- > Open plan living and dining area
- > 3 x ensuite double bedrooms
- > Separate kitchen & laundry
- > Guest bathroom
- > Maid's quarters with independent bathroom
- > Private garden with pool
- > Private elevator

UNIT AREA

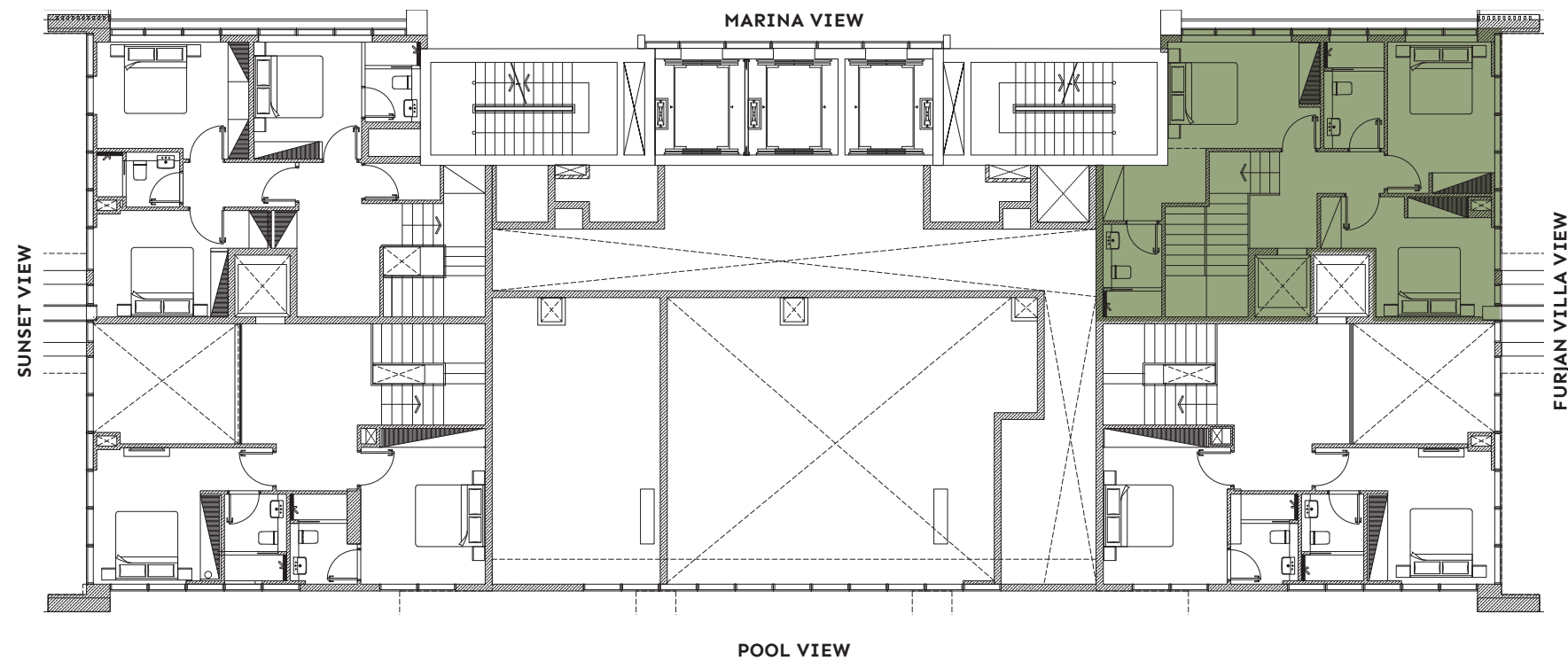
Suite Area 1758.82 sqft
Private Garden Area 1061.32 sqft

TOTAL AREA 2820.14 sqft



LOWER FLOORPLAN
(SEE PREVIOUS PAGE)

TYPICAL FLOORPLAN – UPPER FLOOR



Apartment (3BHK) – 102

3 Bedroom Duplex (lower floor)

FLOORPLAN

- > Duplex garden apartments
- > Family living over 2 floors
- > Open plan living and dining area
- > 3 x ensuite double bedrooms
- > Separate kitchen & laundry
- > Guest bathroom
- > Maid's quarters with independent bathroom
- > Private garden with pool
- > Private elevator

UNIT AREA

Suite Area 1854.08 sqft

Private Garden Area 343.91 sqft

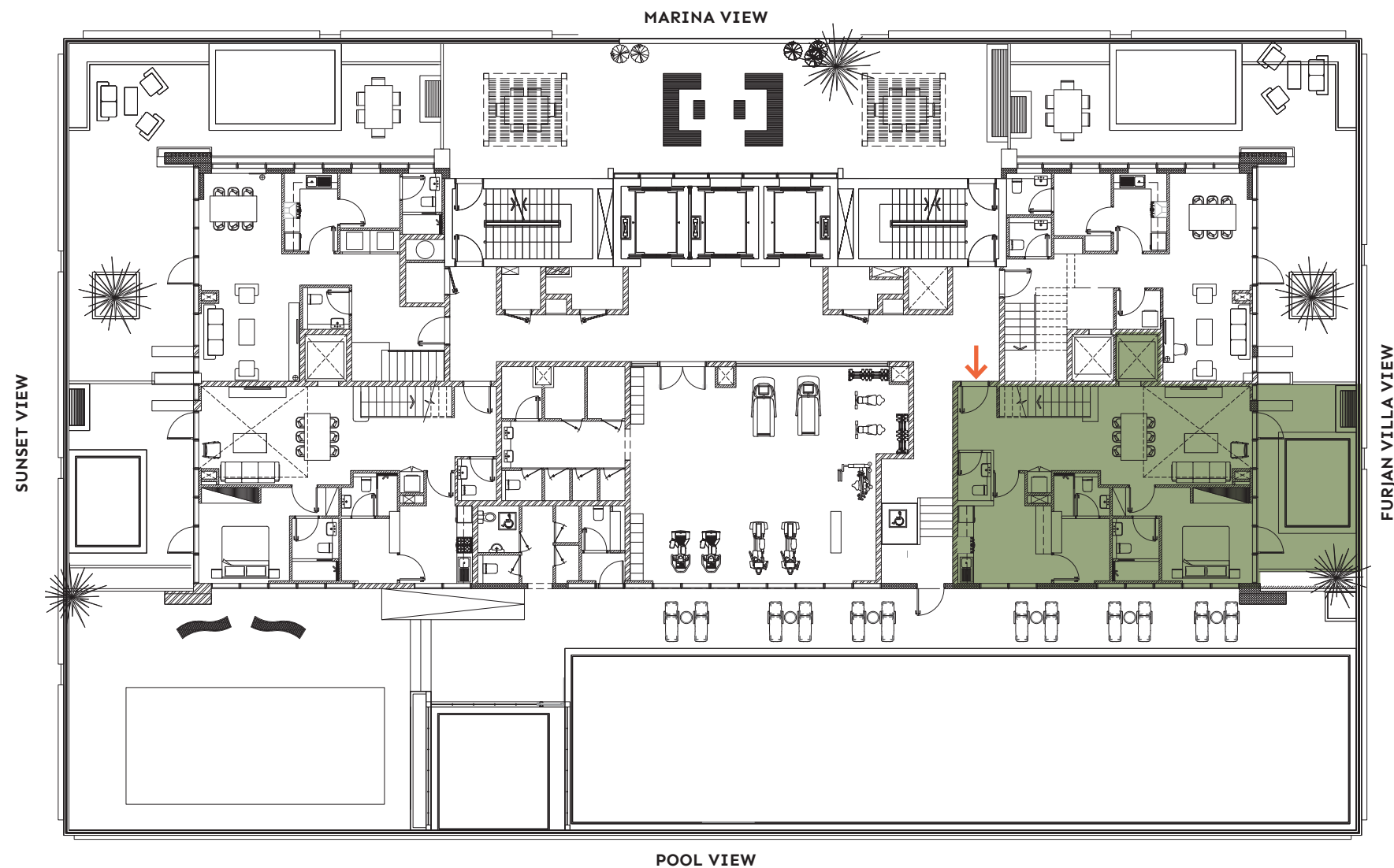
TOTAL AREA

2197.99 sqft



UPPER FLOOR
(SEE NEXT PAGE)

TYPICAL FLOORPLAN – LOWER FLOOR



DISCLAIMER: Drawings are provided by our consultants. All dimensions, features and amenities are approximate at time of printing. Actual area may vary from stated area. The developer reserves the right to make revisions to the Floorplans and any features, materials and dimensions mentioned without further notice.

DEVELOPMENT BY

- PG -

Apartment (3BHK) – 102

3 Bedroom Duplex (upper floor)

FLOORPLAN

- > Duplex garden apartments
- > Family living over 2 floors
- > Open plan living and dining area
- > 3 x ensuite double bedrooms
- > Separate kitchen
- > Guest bathroom
- > Maid's quarters with independent bathroom
- > Private garden with pool
- > Private elevator

UNIT AREA

Suite Area 1854.08 sqft

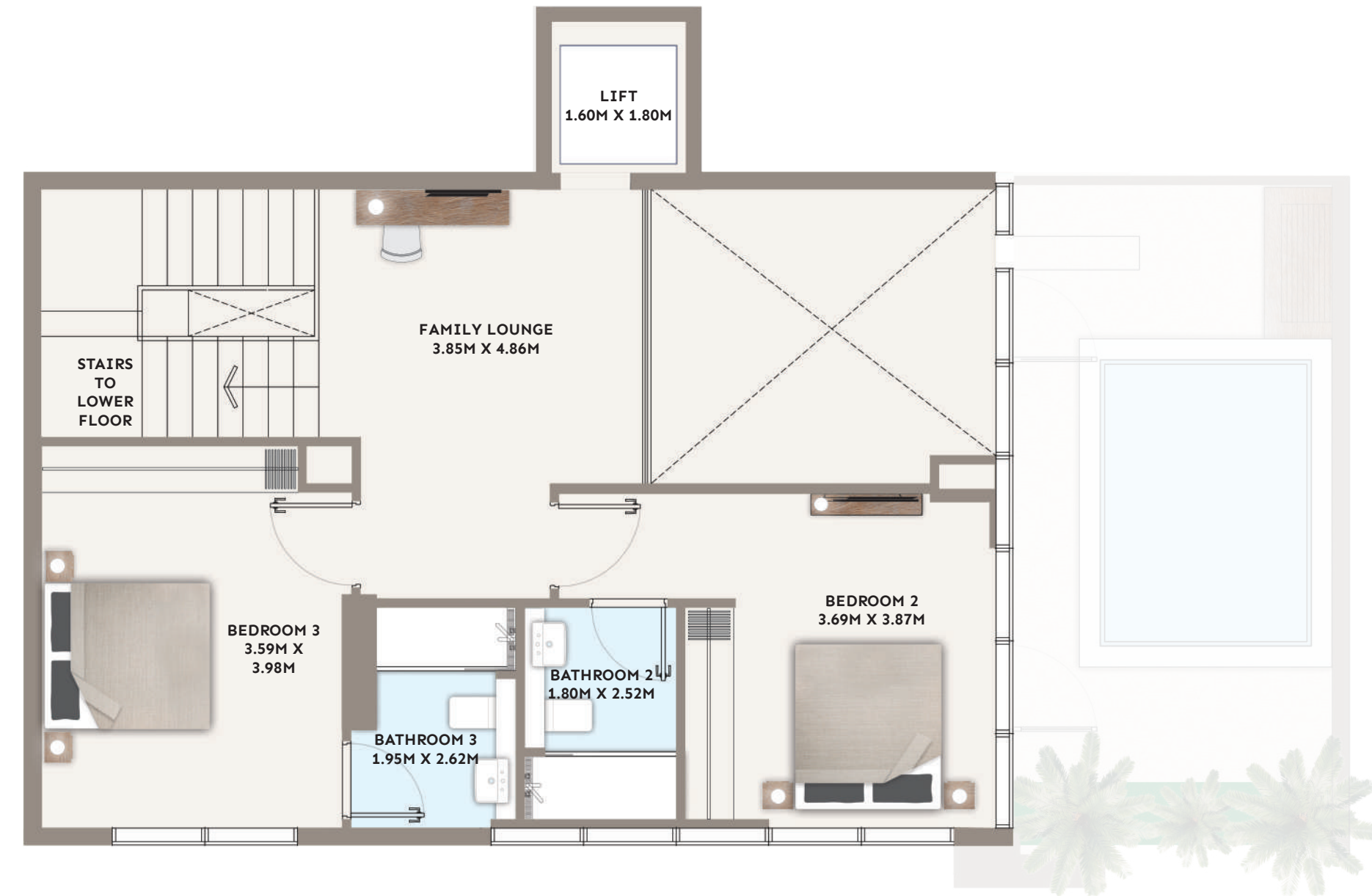
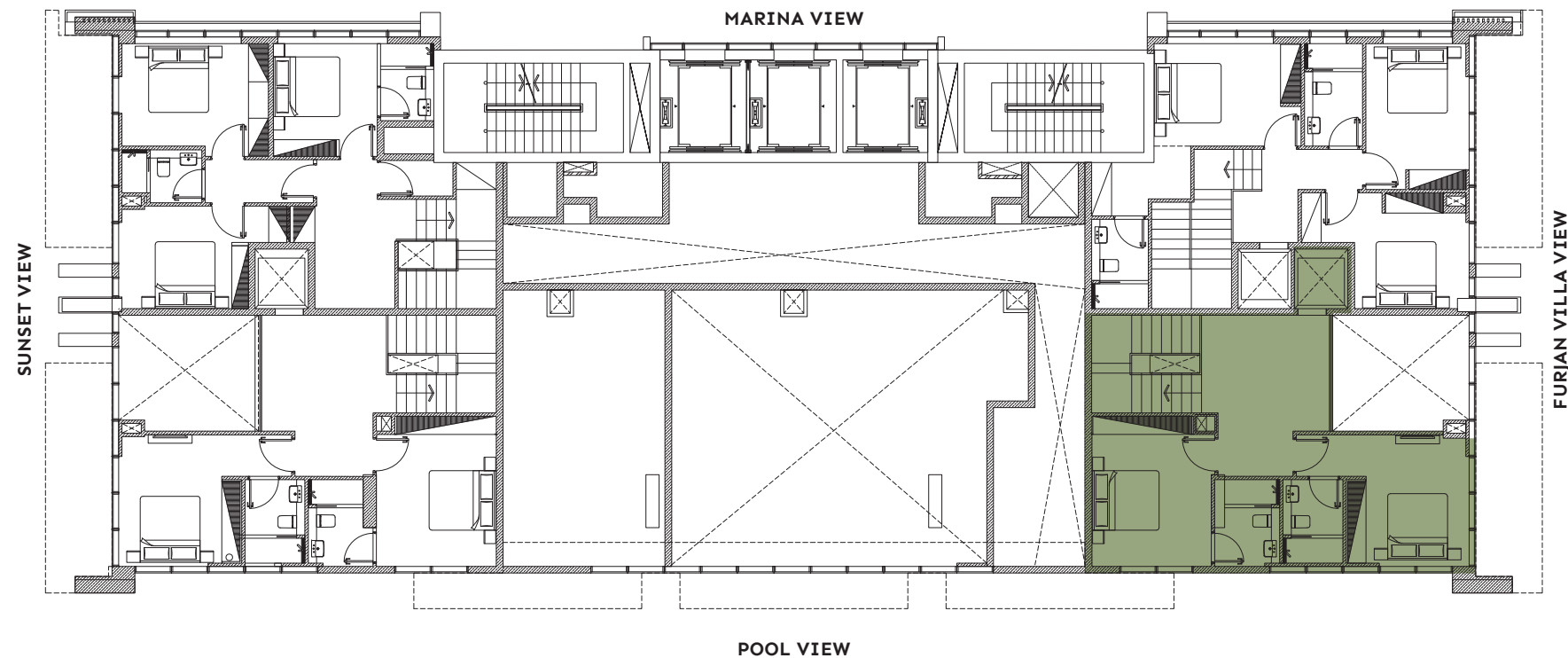
Private Garden Area 343.91 sqft

TOTAL AREA 2197.99 sqft



LOWER FLOOR
(SEE PREVIOUS PAGE)

TYPICAL FLOORPLAN – UPPER FLOOR



Apartment (3BHK) – 103

3 Bedroom Duplex (lower floor)

FLOORPLAN

- > Duplex garden apartments
- > Family living over 2 floors
- > Open plan living and dining area
- > 3 x ensuite double bedrooms
- > Separate kitchen & laundry
- > Guest bathroom
- > Maid's quarters with independent bathroom
- > Private garden with pool
- > Private elevator

UNIT AREA

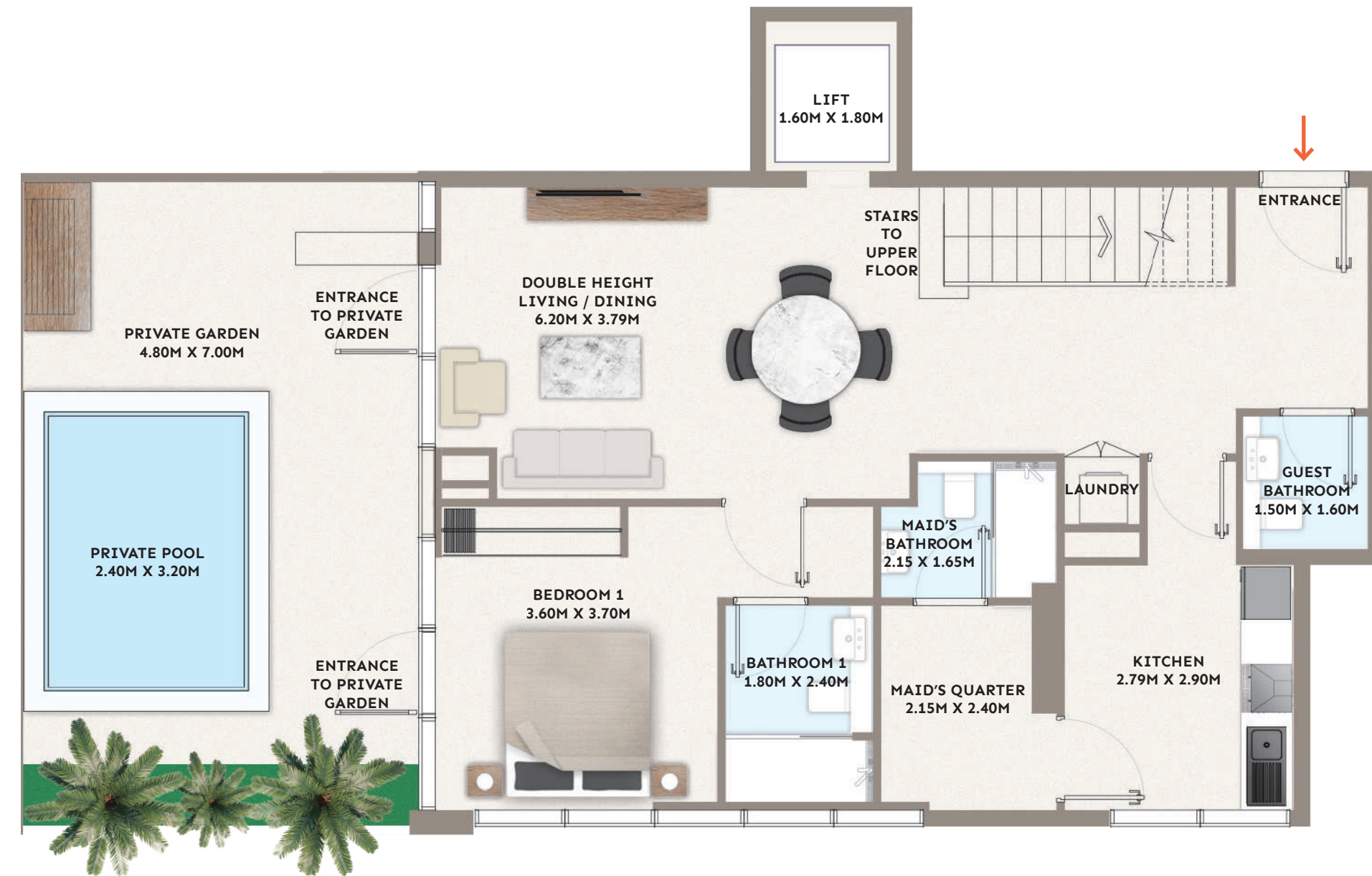
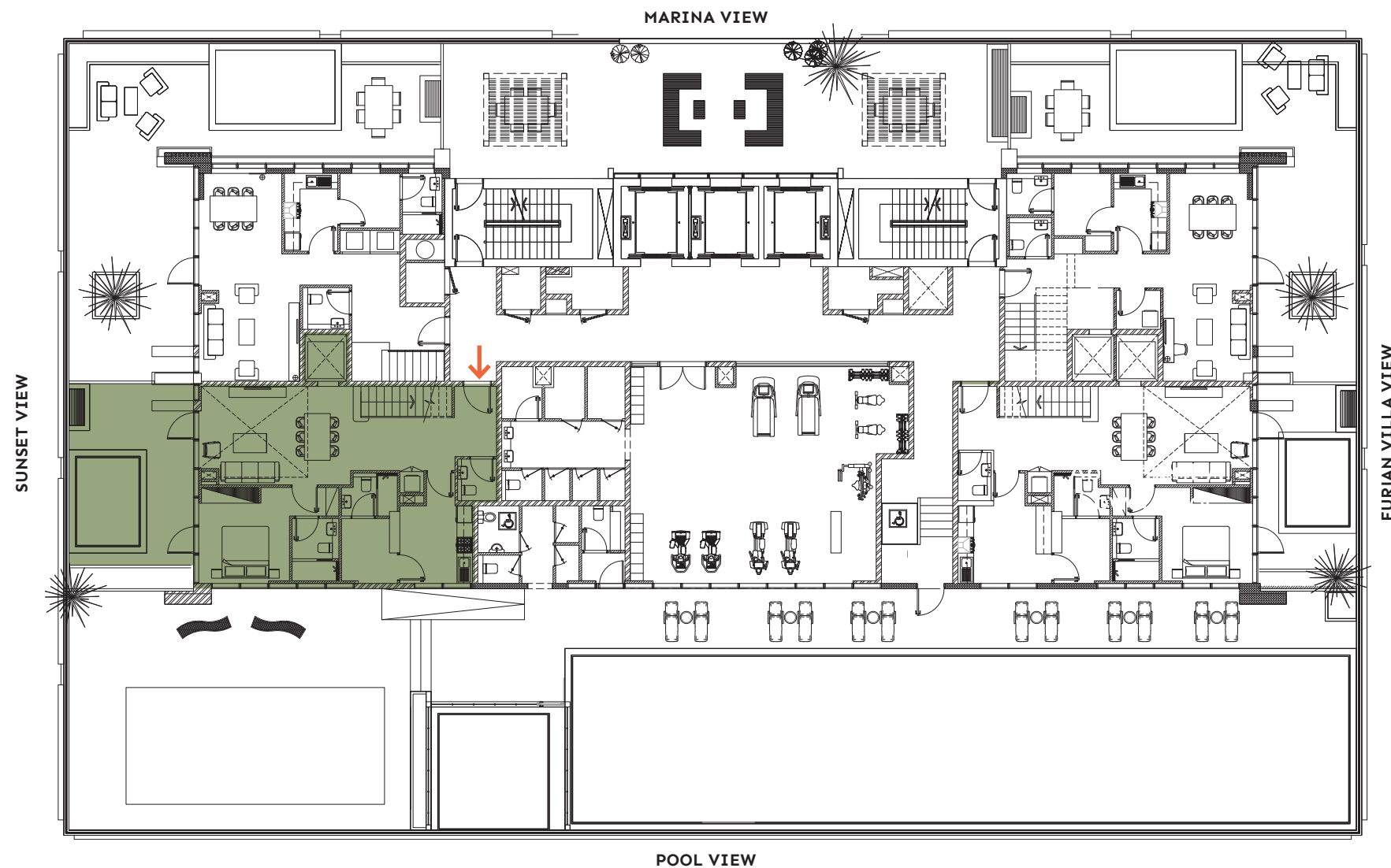
Suite Area 1831.16 sqft
Private Garden Area 431.20 sqft

TOTAL AREA 2262.36 sqft



UPPER FLOOR
(SEE NEXT PAGE)

TYPICAL FLOORPLAN – LOWER FLOOR



DISCLAIMER: Drawings are provided by our consultants. All dimensions, features and amenities are approximate at time of printing. Actual area may vary from stated area. The developer reserves the right to make revisions to the Floorplans and any features, materials and dimensions mentioned without further notice.

DEVELOPMENT BY

- PG -

Apartment (3BHK) – 103

3 Bedroom Duplex (upper floor)

FLOORPLAN

- > Duplex garden apartments
- > Family living over 2 floors
- > Open plan living and dining area
- > 3 x ensuite double bedrooms
- > Separate kitchen & laundry
- > Guest bathroom
- > Maid's quarters with independent bathroom
- > Private garden with pool
- > Private elevator

UNIT AREA

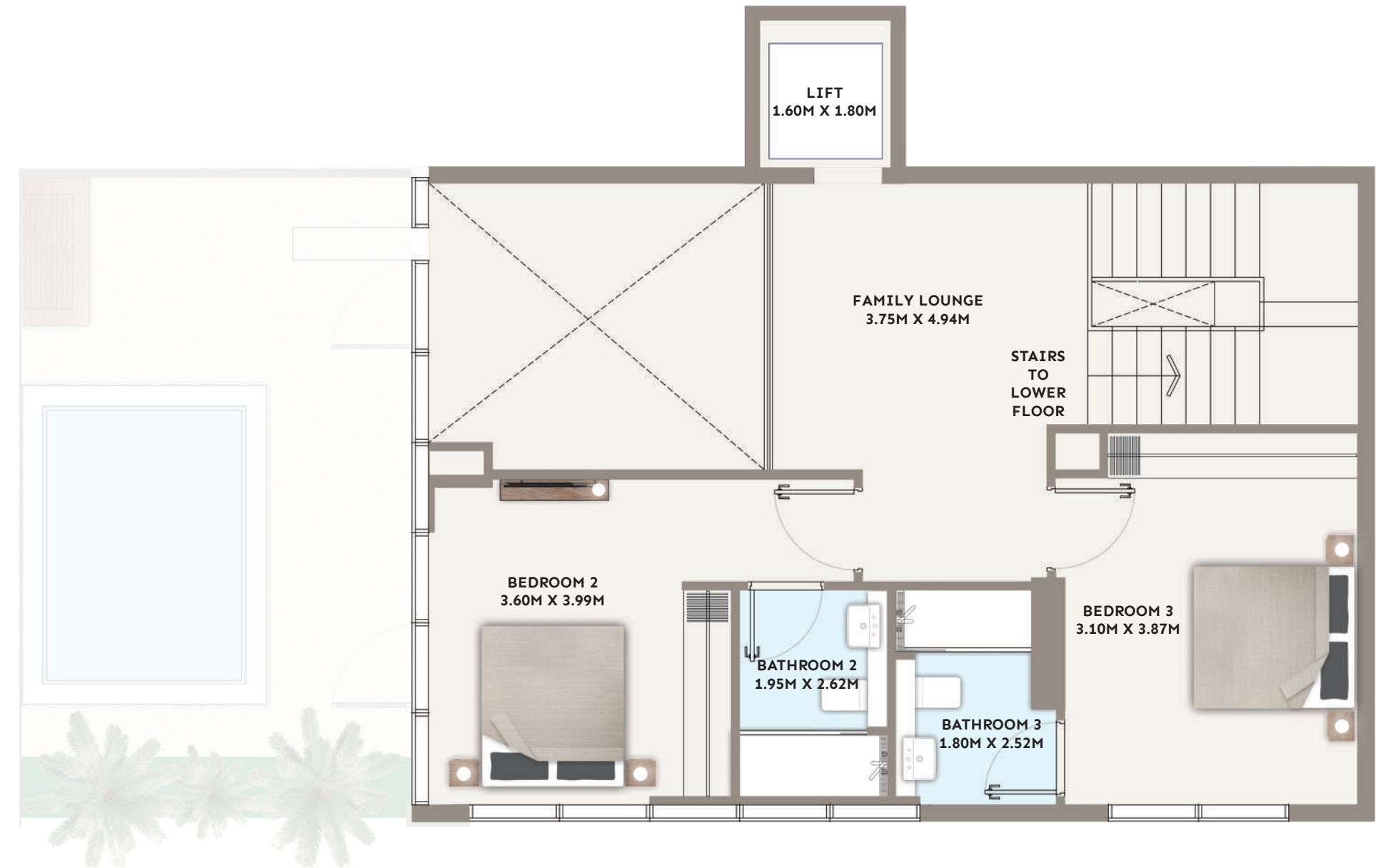
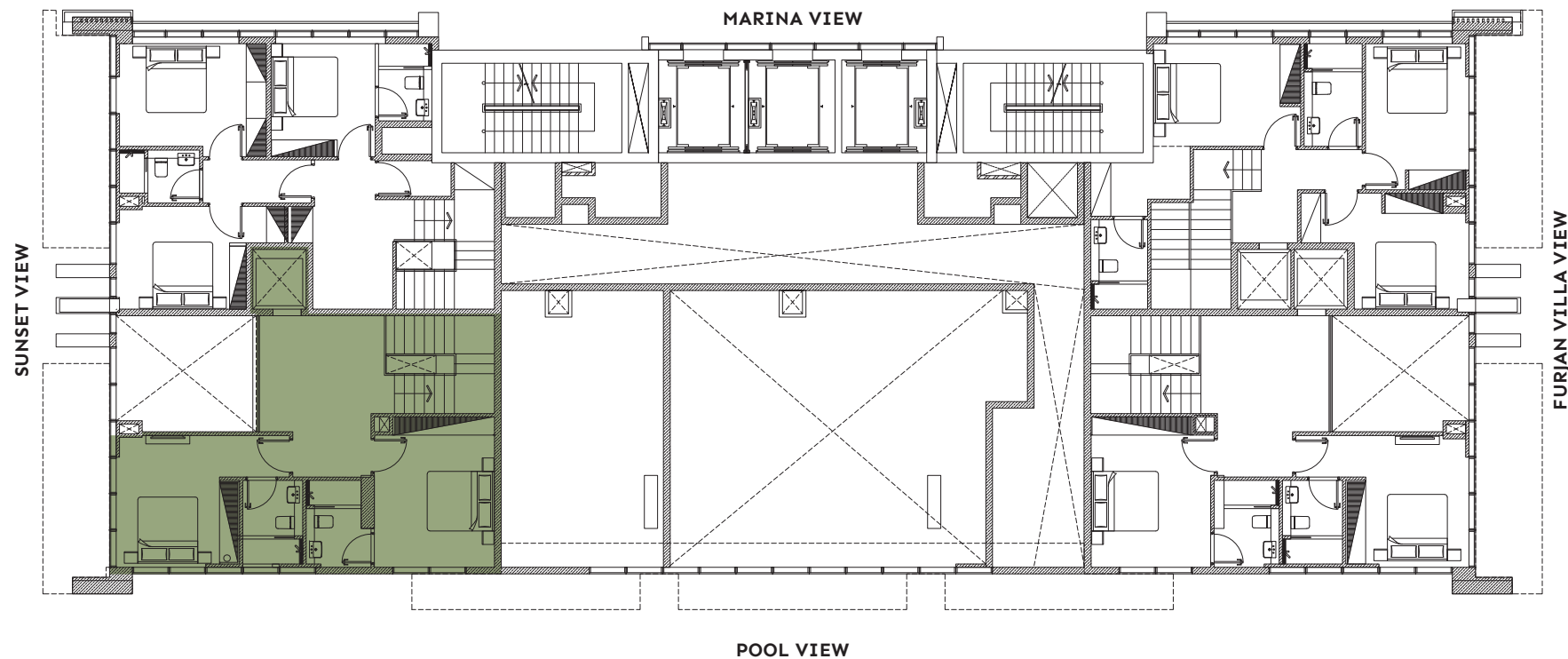
Suite Area 1831.16 sqft
Private Garden Area 431.20 sqft

TOTAL AREA 2262.36 sqft



LOWER FLOOR
(SEE PREVIOUS PAGE)

TYPICAL FLOORPLAN – UPPER FLOOR



LIFT
1.60M X 1.80M

FAMILY LOUNGE
3.75M X 4.94M

STAIRS
TO
LOWER
FLOOR

BEDROOM 2
3.60M X 3.99M

BATHROOM 2
1.95M X 2.62M

BATHROOM 3
1.80M X 2.52M

BEDROOM 3
3.10M X 3.87M



Apartment (3BHK) – 104

3 Bedroom Duplex (lower floor)

FLOORPLAN

- > Duplex garden apartments
- > Family living over 2 floors
- > Open plan living and dining area
- > 3 x ensuite double bedrooms
- > Separate kitchen & laundry
- > Guest bathroom
- > Maid's quarters with independent bathroom
- > Private garden with pool

UNIT AREA

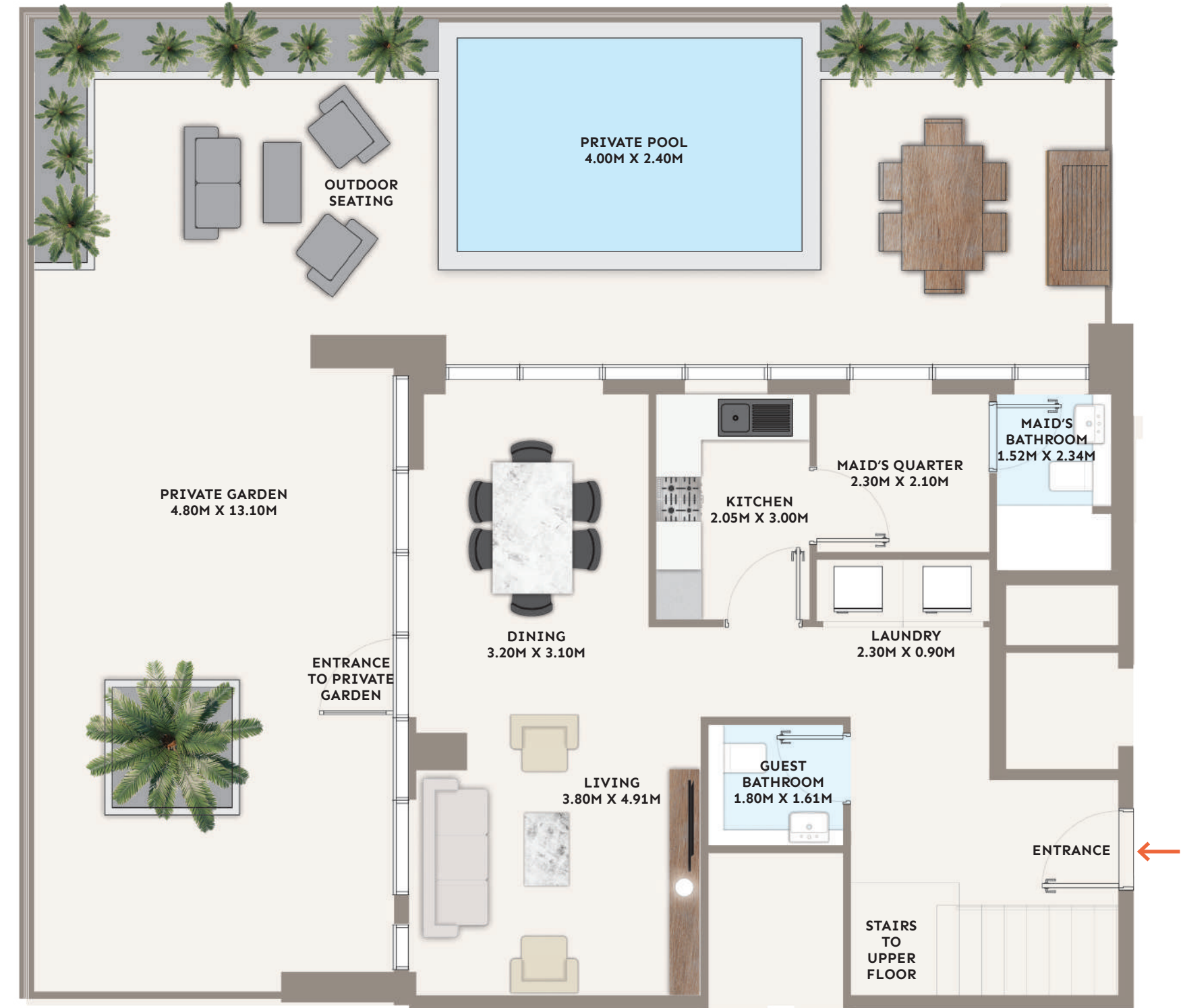
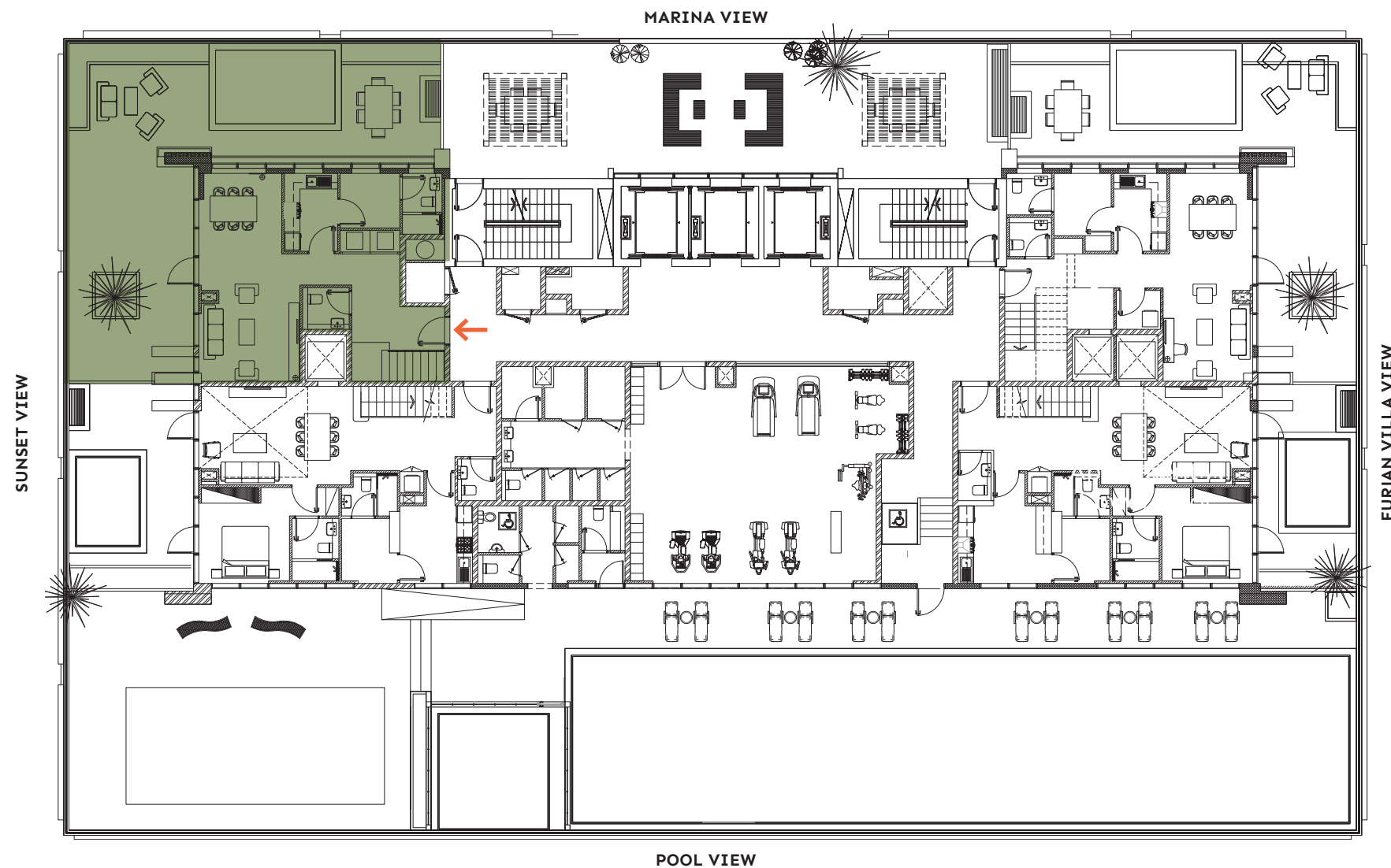
Suite Area 1685.20 sqft
Private Garden Area 1201.79 sqft

TOTAL AREA 2886.99 sqft



UPPER FLOOR
(SEE NEXT PAGE)

TYPICAL FLOORPLAN – LOWER FLOOR



DISCLAIMER: Drawings are provided by our consultants. All dimensions, features and amenities are approximate at time of printing. Actual area may vary from stated area. The developer reserves the right to make revisions to the Floorplans and any features, materials and dimensions mentioned without further notice.

DEVELOPMENT BY

- PG -

Apartment (3BHK) – 104

3 Bedroom Duplex (upper floor)

FLOORPLAN

- > Duplex garden apartments
- > Family living over 2 floors
- > Open plan living and dining area
- > 3 x ensuite double bedrooms
- > Separate kitchen & laundry
- > Guest bathroom
- > Maid's quarters with independent bathroom
- > Private garden with pool

UNIT AREA

Suite Area 1685.20 sqft

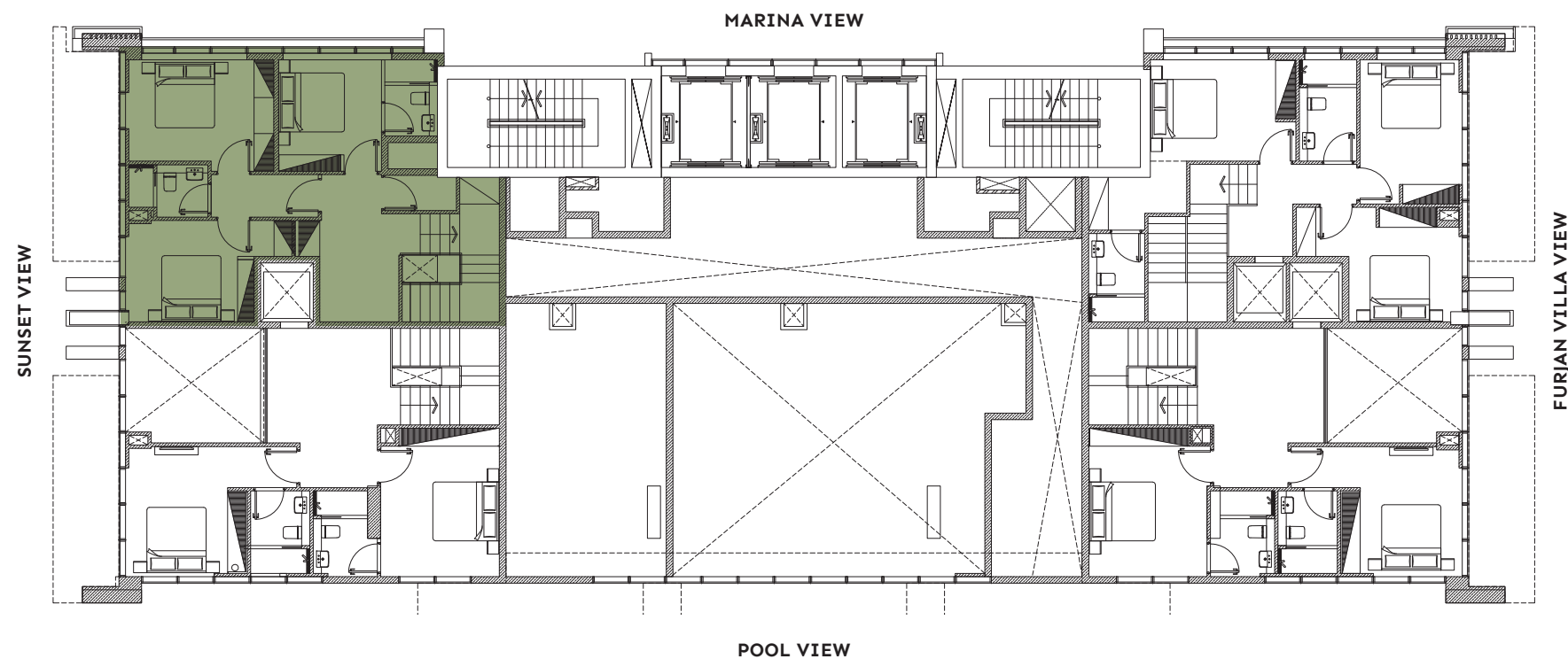
Private Garden Area 1201.79 sqft

TOTAL AREA 2886.99 sqft



LOWER FLOORPLAN
(SEE PREVIOUS PAGE)

TYPICAL FLOORPLAN – UPPER FLOOR



Apartment H

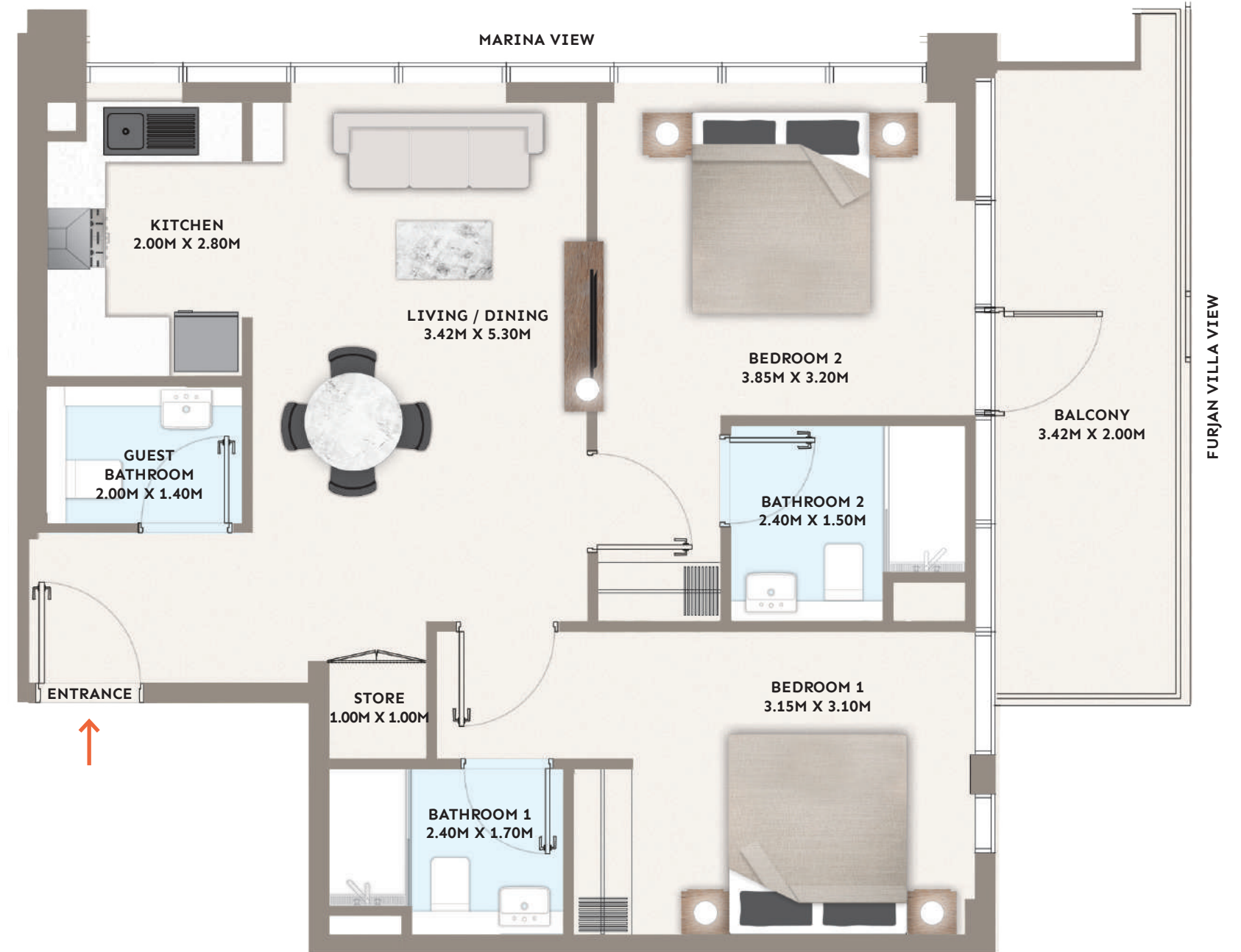
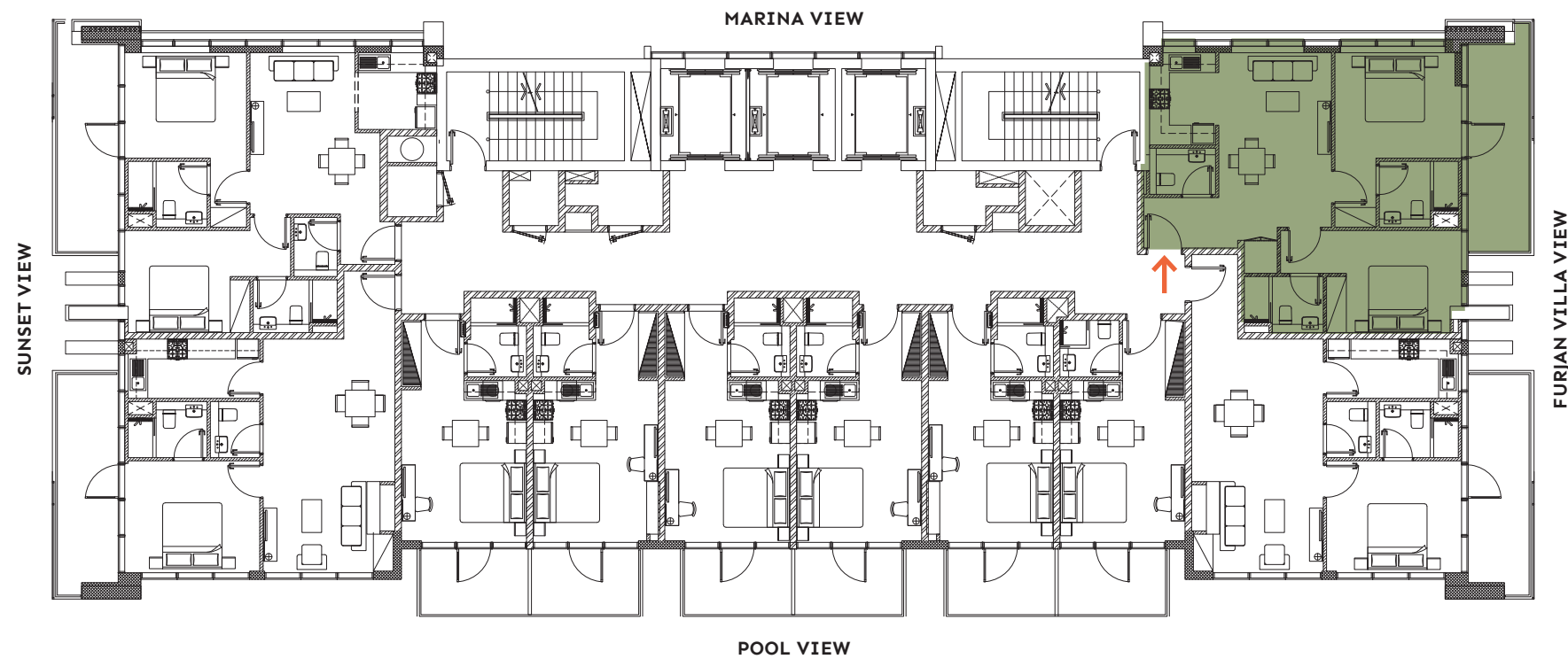
2 Bedroom (2 to 14 Floor)

FLOORPLAN

- > Marina & Furjan Villa view
- > Open plan living and dining area
- > Master bedroom with ensuite
- > Second bedroom with ensuite
- > Kitchen
- > Guest bathroom
- > Spacious balcony

UNIT AREA	
Suite Area	837.65 sqft
Balcony Area	148.22 sqft
TOTAL AREA	985.87 sqft

TYPICAL FLOORPLAN



Apartment I

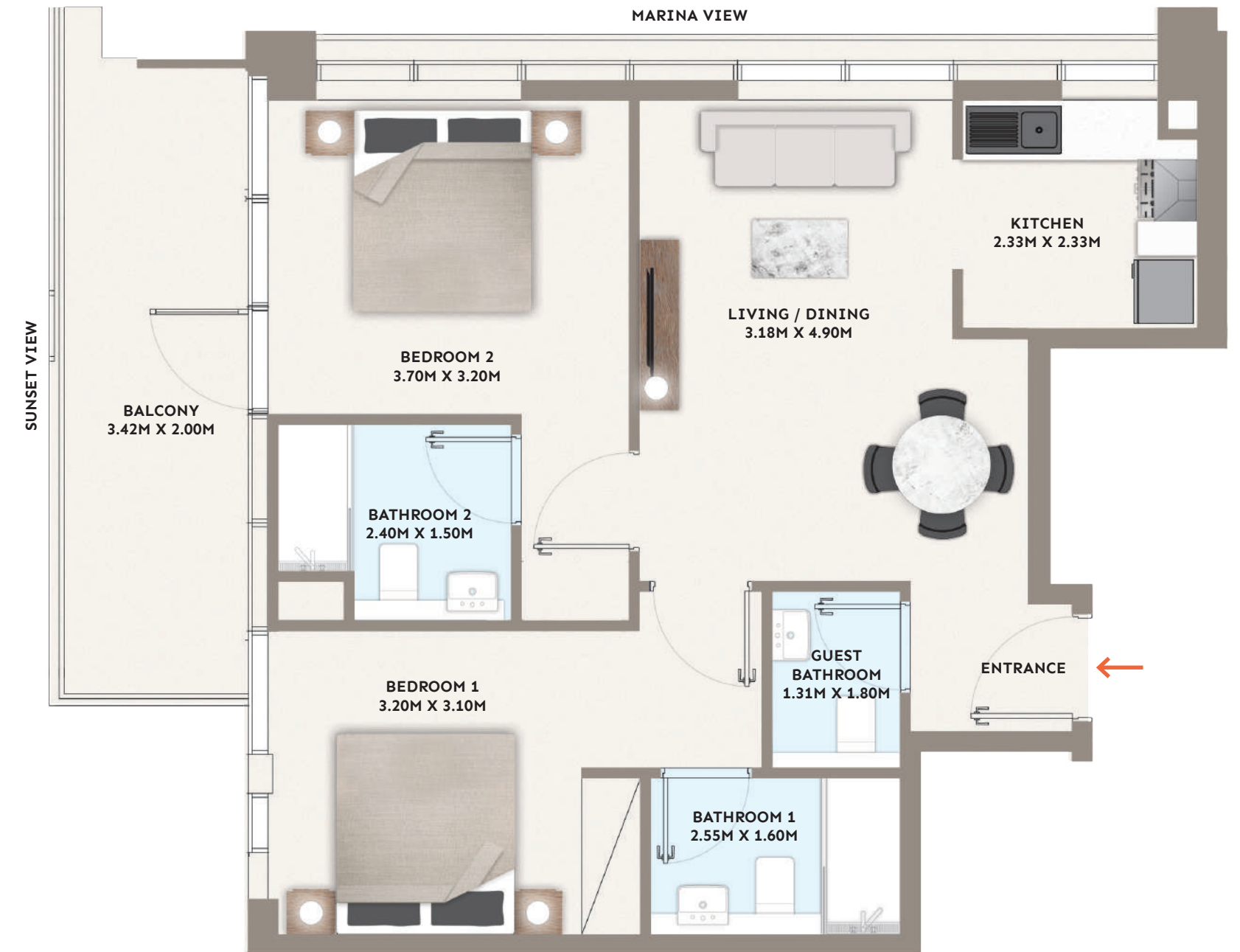
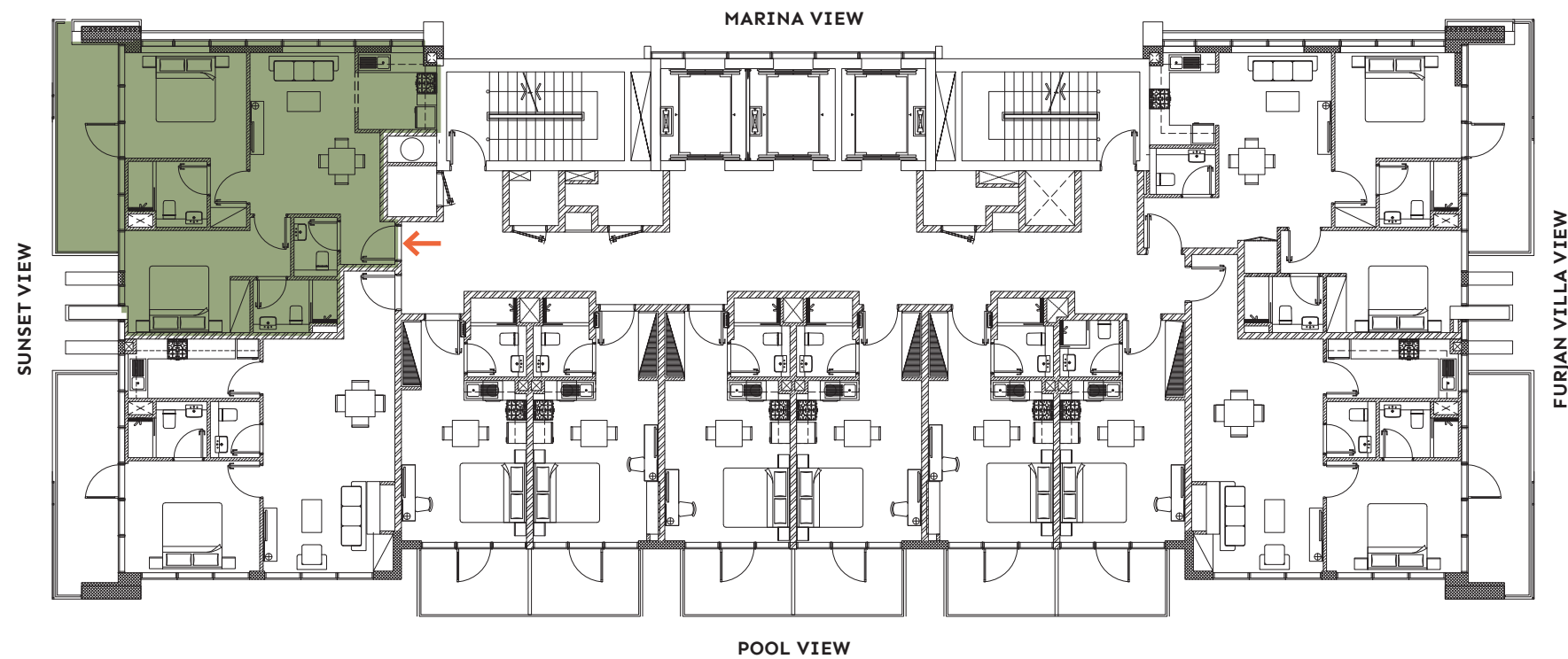
2 Bedroom (2 to 14 Floor)

FLOORPLAN

- > Marina & sunset view
- > Open plan living and dining area
- > Master bedroom with ensuite
- > Second bedroom with ensuite
- > Kitchen
- > Guest bathroom
- > Spacious balcony

UNIT AREA	
Suite Area	774.36 sqft
Balcony Area	148.22 sqft
TOTAL AREA	922.57 sqft

TYPICAL FLOORPLAN



Apartment D

1 Bedroom (2 to 14 Floor)

FLOORPLAN

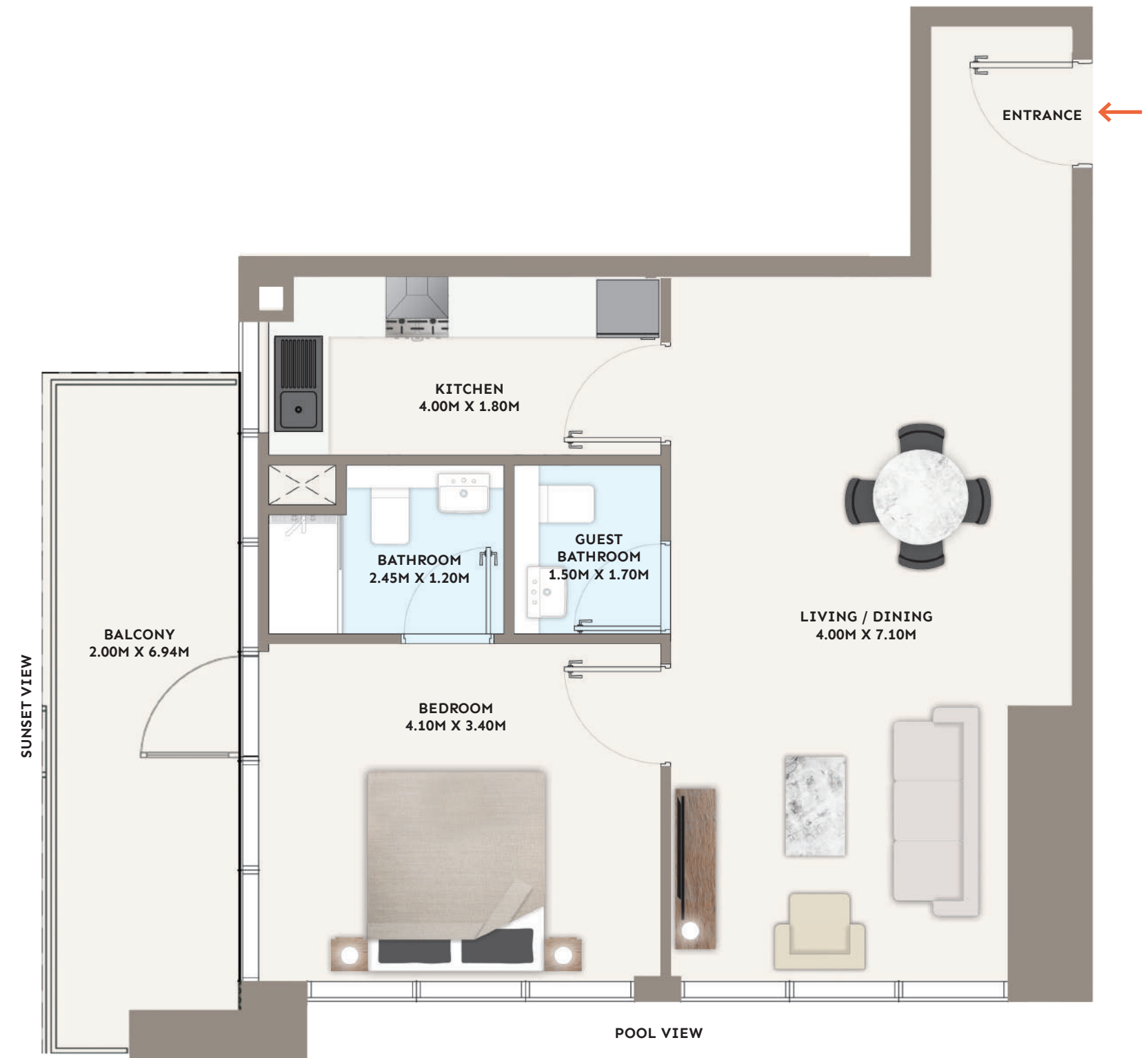
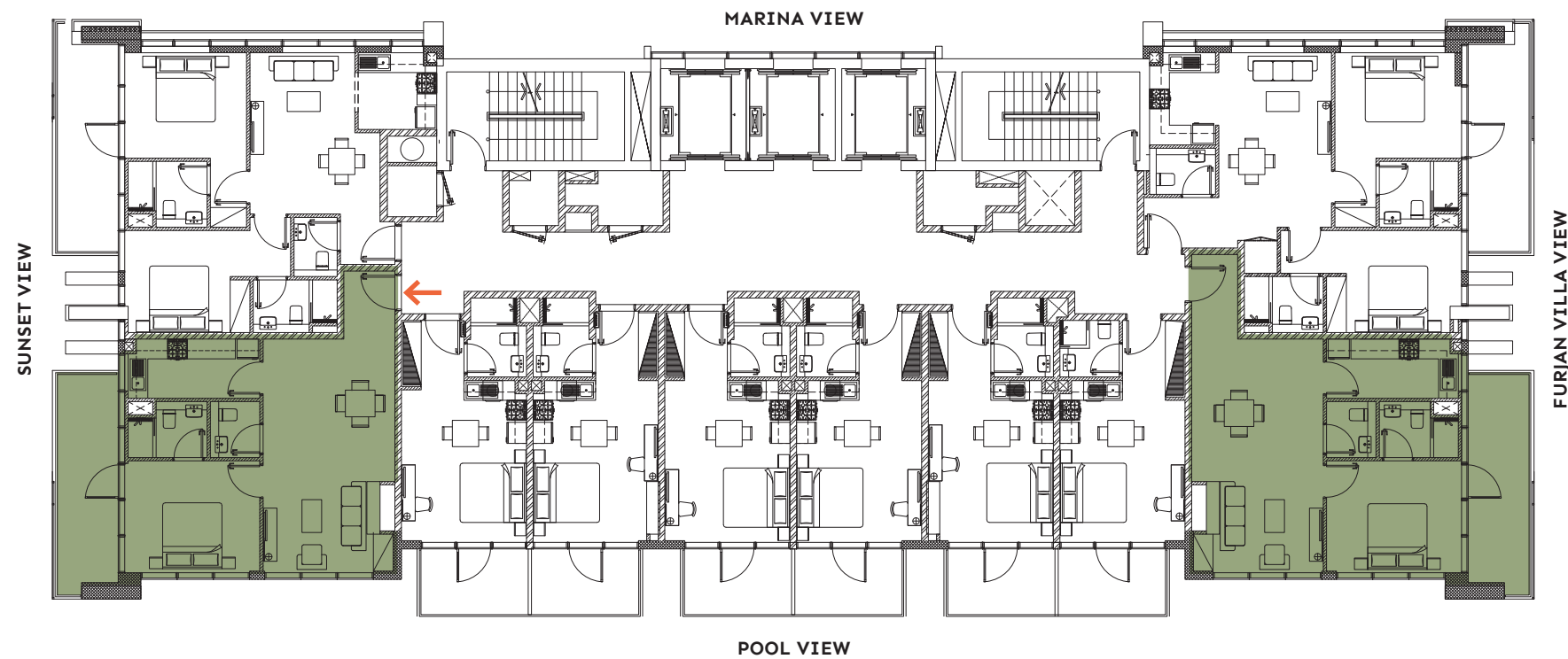
- > Sunset, pool & Furjan villa view
- > Open plan living and dining area
- > Master bedroom with ensuite
- > Separate kitchen
- > Guest bathroom
- > Spacious balcony

UNIT AREA

Suite Area 693.20 sqft
Balcony Area 141.65 sqft

TOTAL AREA 834.85 sqft

TYPICAL FLOORPLAN



Apartment E

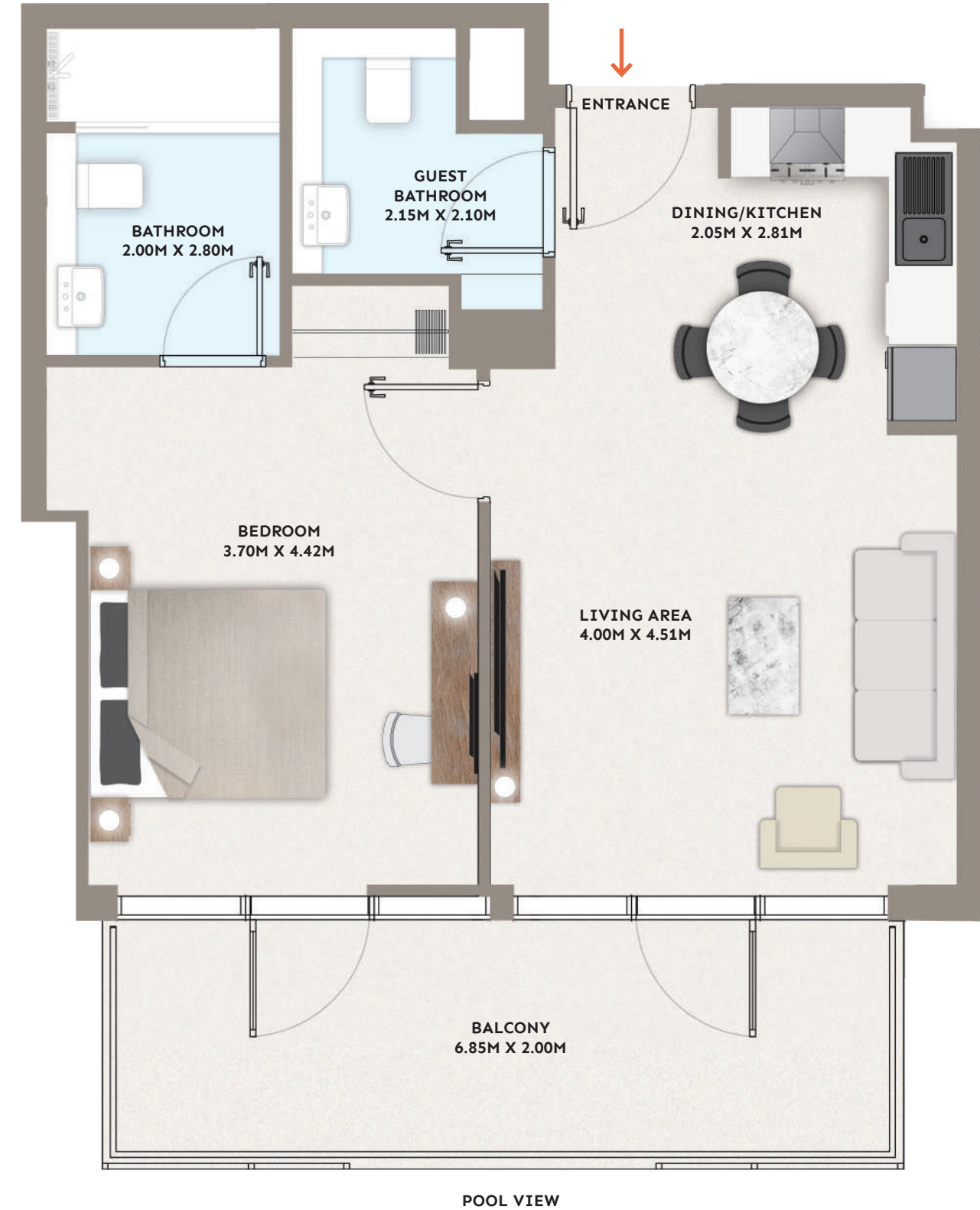
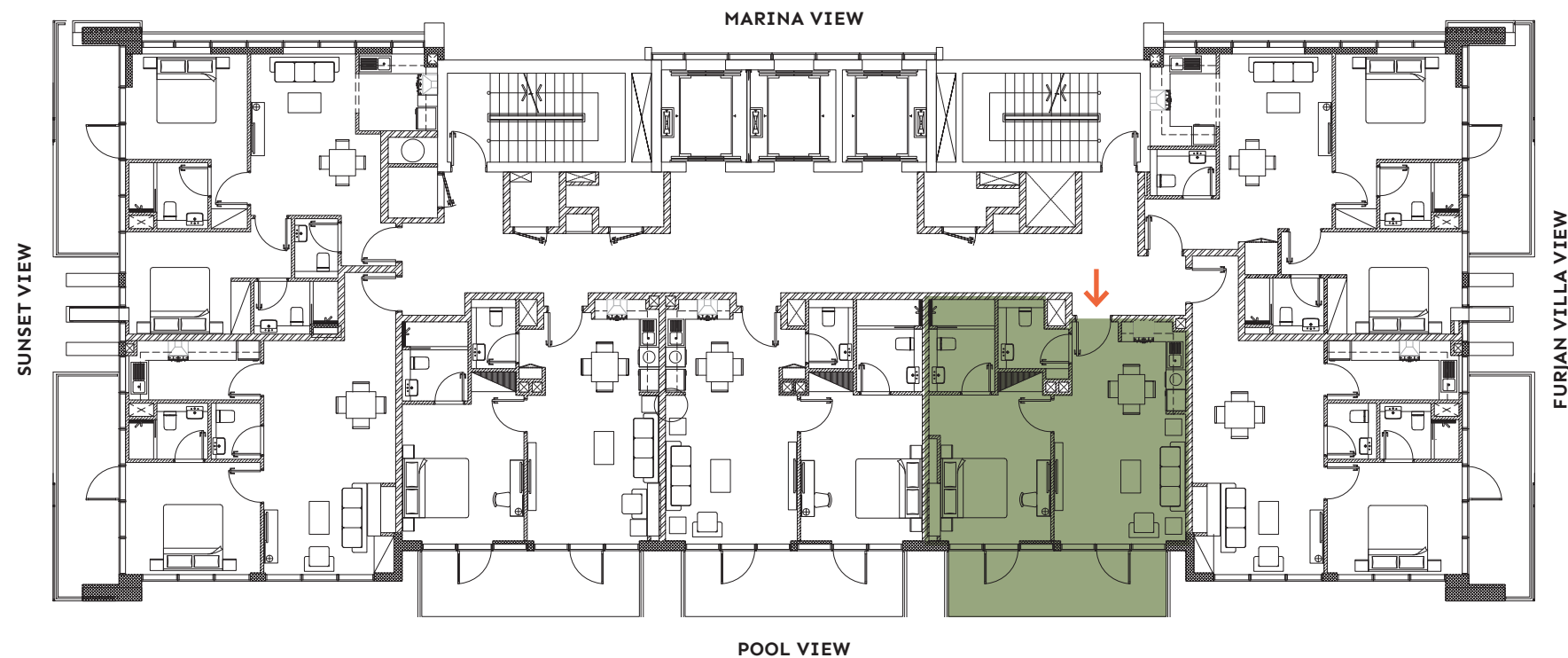
1 Bedroom (8th to 14th Floor)

FLOORPLAN

- > Pool view
- > Open plan living and dining area
- > Master bedroom with ensuite
- > Kitchen
- > Guest bathroom
- > Spacious balcony

UNIT AREA	
Suite Area	618.17 sqft
Balcony Area	146.82 sqft
TOTAL AREA	764.99 sqft

TYPICAL FLOORPLAN



DISCLAIMER: Drawings are provided by our consultants. All dimensions, features and amenities are approximate at time of printing. Actual area may vary from stated area. The developer reserves the right to make revisions to the Floorplans and any features, materials and dimensions mentioned without further notice.

DEVELOPMENT BY

- PG -

Apartment F

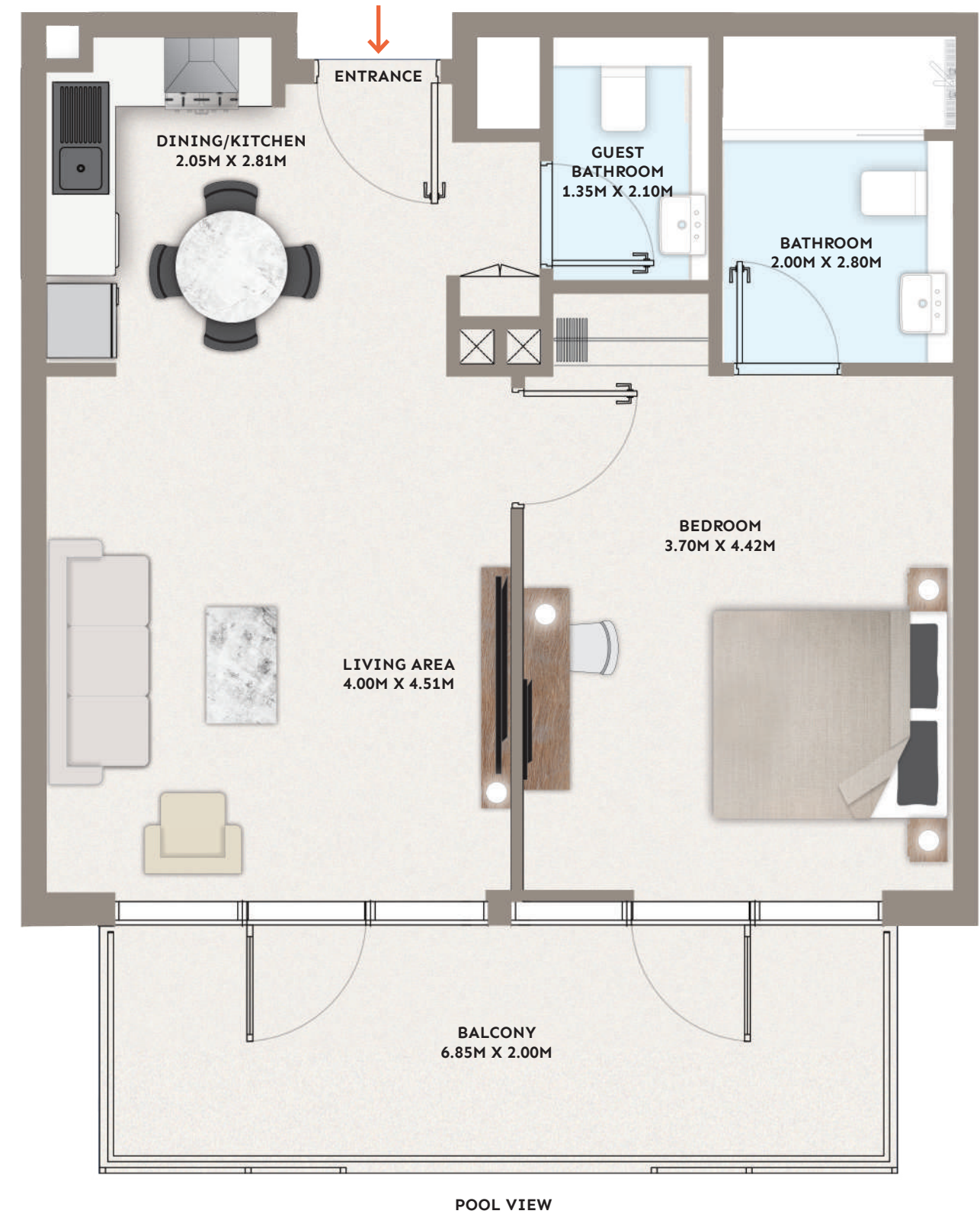
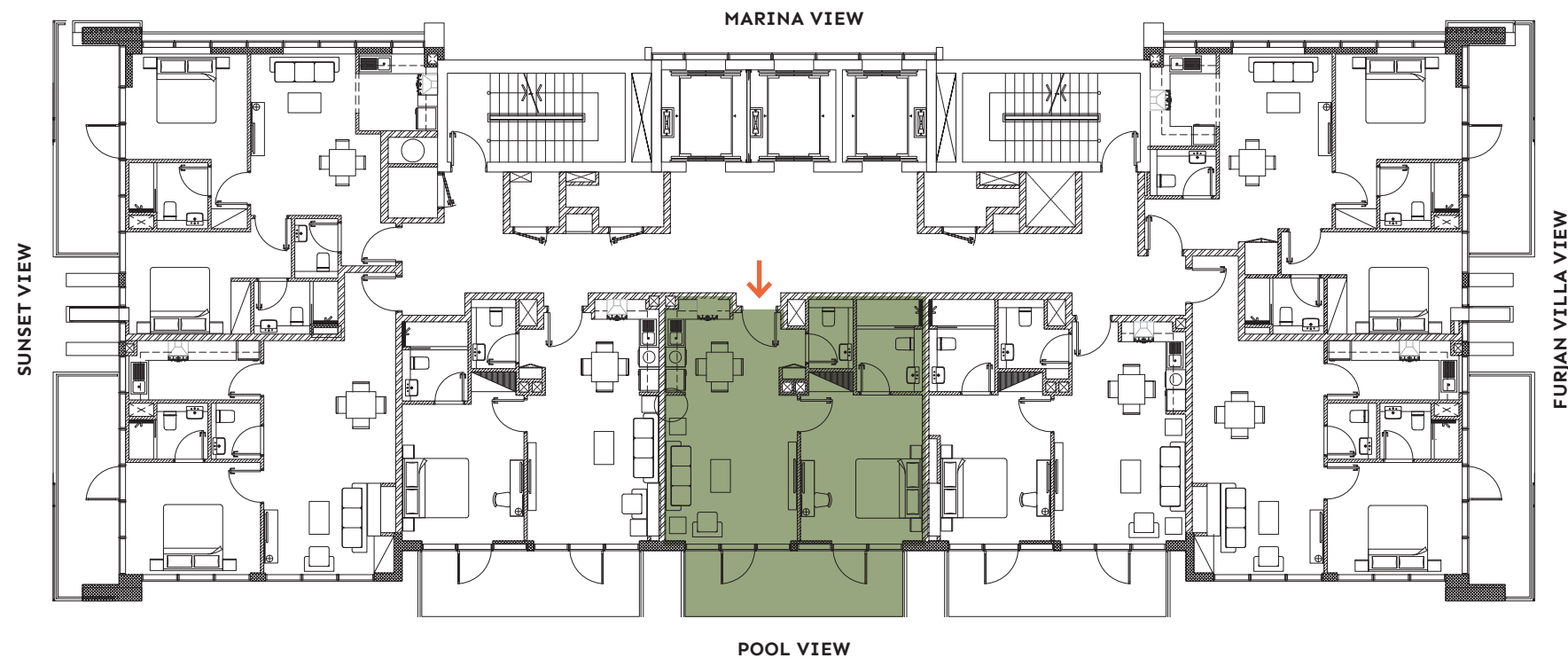
1 Bedroom (8th to 14th Floor)

FLOORPLAN

- > Pool view
- > Open plan living and dining area
- > Master bedroom with ensuite
- > Kitchen
- > Guest bathroom
- > Spacious balcony

UNIT AREA	
Suite Area	650.00 sqft
Balcony Area	146.82 sqft
TOTAL AREA	797.82 sqft

TYPICAL FLOORPLAN



DISCLAIMER: Drawings are provided by our consultants. All dimensions, features and amenities are approximate at time of printing. Actual area may vary from stated area. The developer reserves the right to make revisions to the Floorplans and any features, materials and dimensions mentioned without further notice.

DEVELOPMENT BY

- PG -

Apartment G

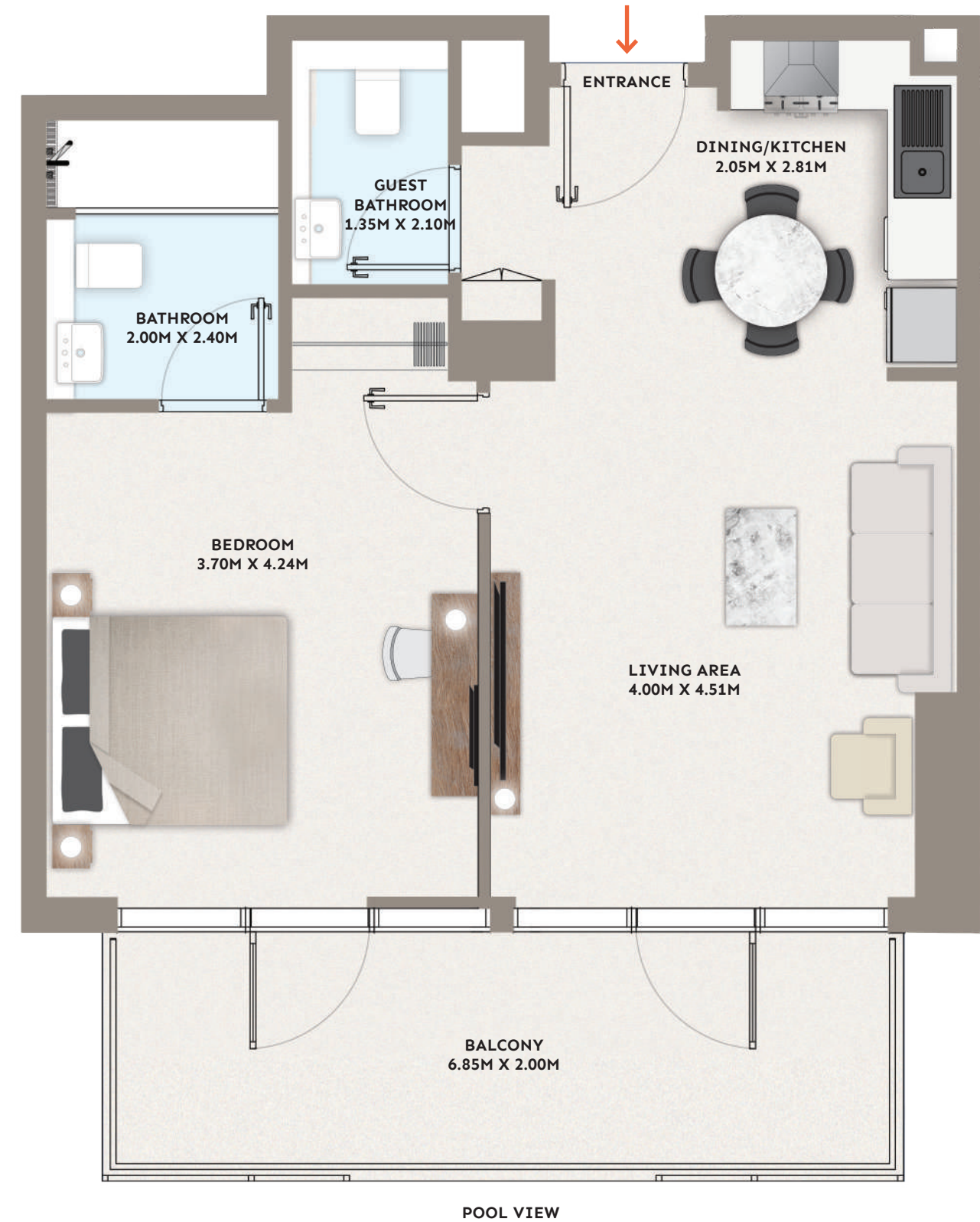
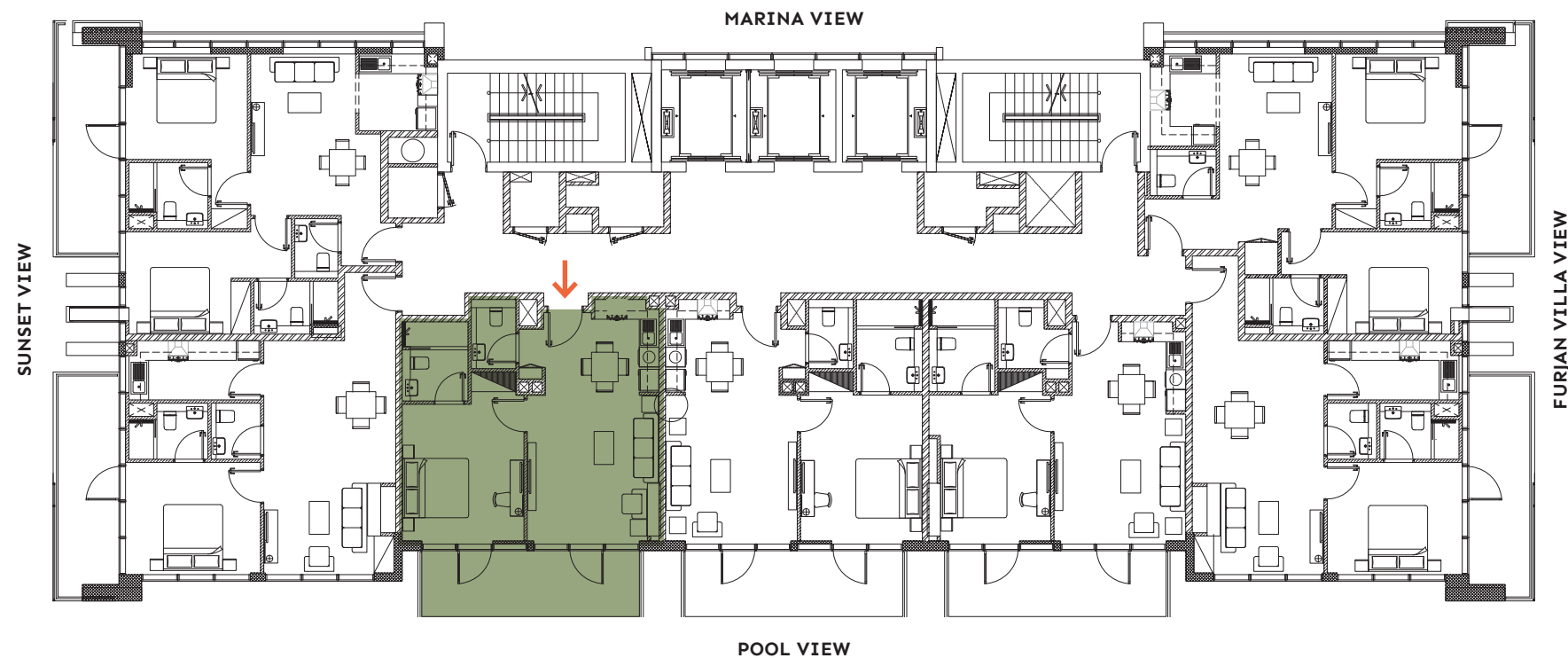
1 Bedroom (8th to 14th Floor)

FLOORPLAN

- > Pool view
- > Open plan living and dining area
- > Master bedroom with ensuite
- > Kitchen
- > Guest bathroom
- > Spacious balcony

UNIT AREA	
Suite Area	622.80 sqft
Balcony Area	146.82 sqft
TOTAL AREA	769.62 sqft

TYPICAL FLOORPLAN



DISCLAIMER: Drawings are provided by our consultants. All dimensions, features and amenities are approximate at time of printing. Actual area may vary from stated area. The developer reserves the right to make revisions to the Floorplans and any features, materials and dimensions mentioned without further notice.

DEVELOPMENT BY

- PG -

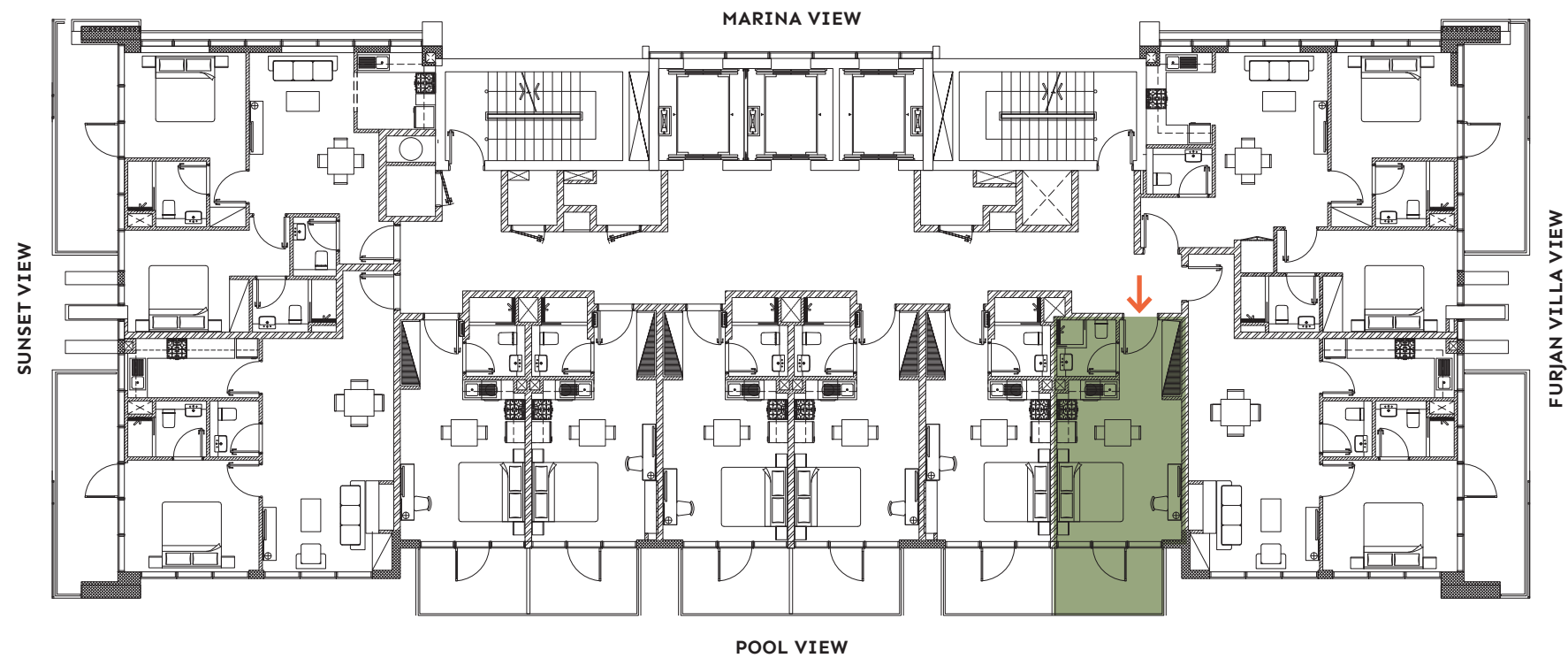
Studio Apartment A (2nd to 7th Floor)

FLOORPLAN

- > Pool view
- > Open plan living and dining area
- > Kitchen
- > Bathroom
- > Spacious balcony

UNIT AREA	
Suite Area	299.56 sqft
Balcony Area	73.41 sqft
TOTAL AREA	372.97 sqft

TYPICAL FLOORPLAN



DISCLAIMER: Drawings are provided by our consultants. All dimensions, features and amenities are approximate at time of printing. Actual area may vary from stated area. The developer reserves the right to make revisions to the Floorplans and any features, materials and dimensions mentioned without further notice.

DEVELOPMENT BY

- PG -

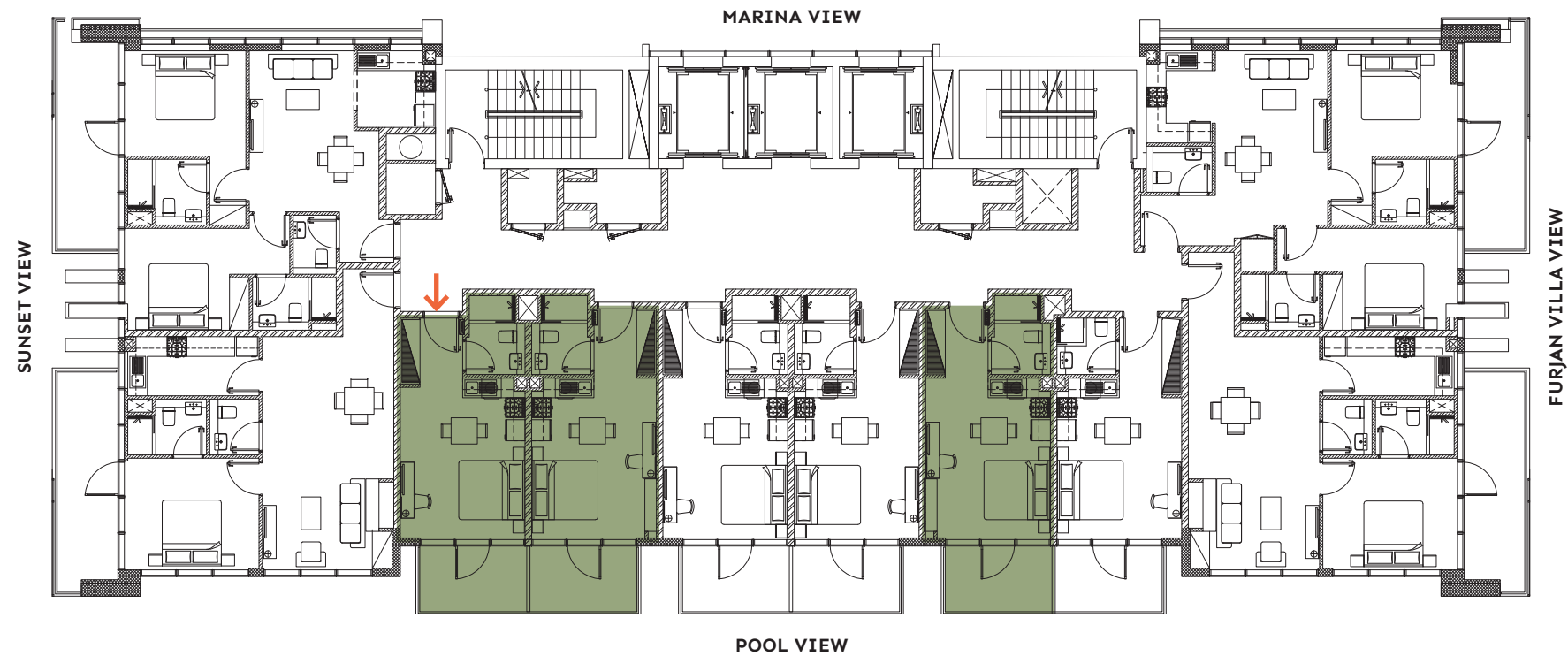
Studio Apartment B (2nd to 7th Floor)

FLOORPLAN

- > Pool view
- > Open plan living and dining area
- > Kitchen
- > Bathroom
- > Spacious balcony

UNIT AREA	
Suite Area	312.37 sqft
Balcony Area	73.41 sqft
TOTAL AREA	385.78 sqft

TYPICAL FLOORPLAN



DISCLAIMER: Drawings are provided by our consultants. All dimensions, features and amenities are approximate at time of printing. Actual area may vary from stated area. The developer reserves the right to make revisions to the Floorplans and any features, materials and dimensions mentioned without further notice.

DEVELOPMENT BY

- PG -

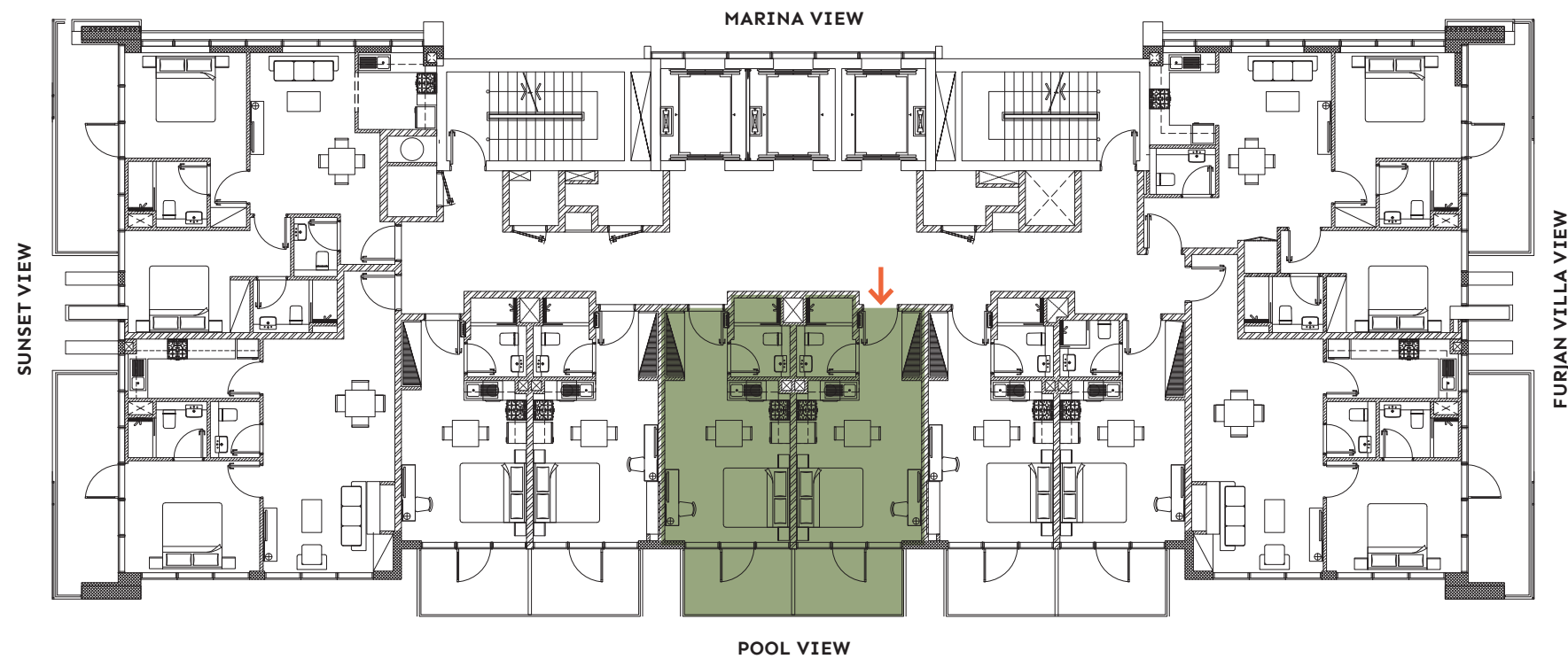
Studio Apartment C (2nd to 7th Floor)

FLOORPLAN

- > Pool view
- > Open plan living and dining area
- > Kitchen
- > Bathroom
- > Spacious balcony

UNIT AREA	
Suite Area	320.98 sqft
Balcony Area	73.41 sqft
TOTAL AREA	394.39 sqft

TYPICAL FLOORPLAN



DISCLAIMER: Drawings are provided by our consultants. All dimensions, features and amenities are approximate at time of printing. Actual area may vary from stated area. The developer reserves the right to make revisions to the Floorplans and any features, materials and dimensions mentioned without further notice.

DEVELOPMENT BY

- PG -