

# SEASIDE

BY PRESTIGE ONE



PRESTIGE ONE

# WAVE HELLO TO LUXURY

Enjoy the ultimate experience of island living in the city  
at Seaside by Prestige One, the latest residential development in  
Dubai Islands.





INTRODUCING  
SEASIDE



Seaside by Prestige One offers an exclusive retreat that harmonises the luxuries of urban living with the serene ambience of island life.

Designed with sophistication, each residence boasts floor-to-ceiling windows and expansive balconies that invite the surrounding seascape into every home.

The architecture features a modern design, with clean lines and a tiered structure that allows for privacy while accentuating the panoramic views.

LIFE BETWEEN THE CITY  
AND THE SEA



SEA THE  
PEAK OF LUXURY



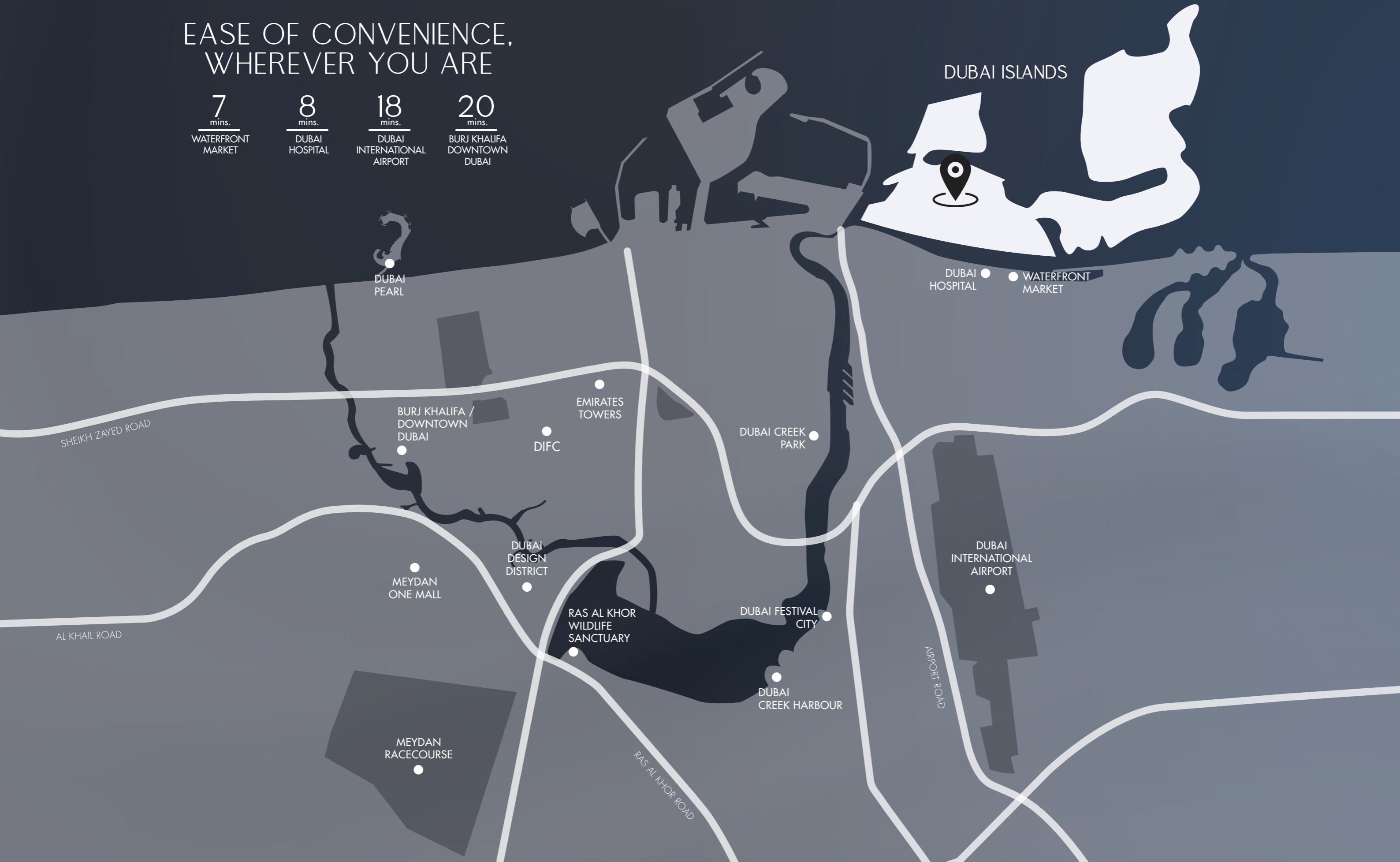
# EASE OF CONVENIENCE, WHEREVER YOU ARE

**7**  
mins.  
WATERFRONT  
MARKET

**8**  
mins.  
DUBAI  
HOSPITAL

**18**  
mins.  
DUBAI  
INTERNATIONAL  
AIRPORT

**20**  
mins.  
BURJ KHALIFA  
DOWNTOWN  
DUBAI



DUBAI ISLANDS

DUBAI  
PEARL

DUBAI  
HOSPITAL

WATERFRONT  
MARKET

SHEIKH ZAYED ROAD

BURJ KHALIFA /  
DOWNTOWN  
DUBAI

EMIRATES  
TOWERS

DIFC

DUBAI CREEK  
PARK

AL KHAIL ROAD

MEYDAN  
ONE MALL

DUBAI  
DESIGN  
DISTRICT

RAS AL KHOR  
WILDLIFE  
SANCTUARY

DUBAI FESTIVAL  
CITY

DUBAI  
INTERNATIONAL  
AIRPORT

DUBAI  
CREEK HARBOUR

AIRPORT ROAD

MEYDAN  
RACECOURSE

RAS AL KHOR ROAD

# SEASIDE

5 mins.

CENTARA MIRAGE BEACH RESORT

5 mins.

RIU PALACE DUBAI ISLAND

1 mins.

DUBAI ISLANDS MALL

6 mins.

DUBAI ISLANDS BEACH

5 mins.

SOUQ AL MARFA

7 mins.

DUBAI ISLANDS MARINA



SOON TO RISE  
IN THE HEART OF DUBAI ISLANDS

# LEVEL CONIGURATION



ROOFTOP

RESIDENCES

PODIUM / 1<sup>st</sup> FLOOR

CAR PARK

GROUND FLOOR / RETAIL





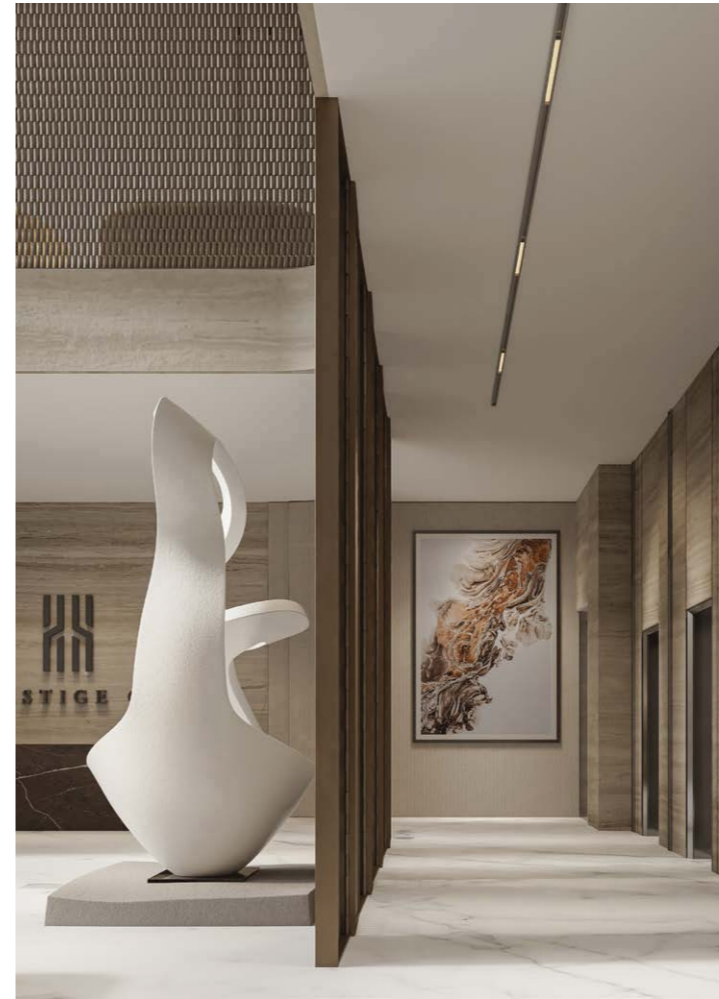
Seaside by Prestige One takes luxury living to the next level. Each aspect of the building is designed to elevate your experience of comfort and sophistication.



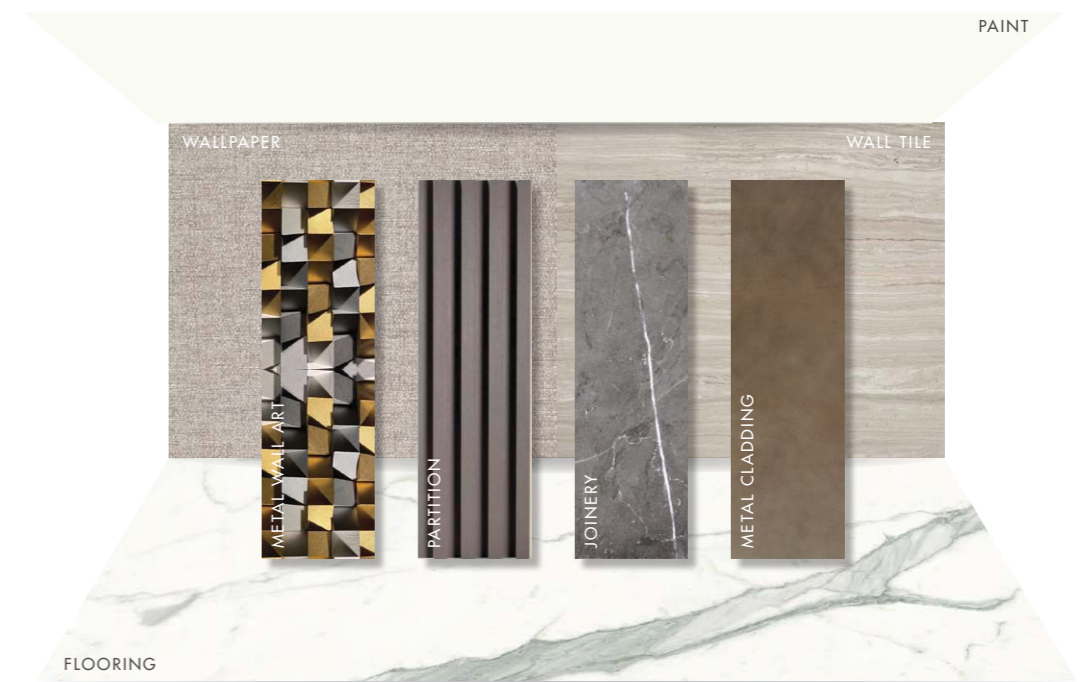
WELCOME  
TO YOUR NEW HAVEN



Embrace the serenity of Seaside by Prestige One's lobby, a space thoughtfully designed to be your sanctuary from the moment you arrive.



ENTRANCE LOBBY | LOBBY LIFT CORRIDOR





TYPICAL LIFT LOBBY AND CORRIDOR





FIVE-STAR RESORT AMBIENCE  
INSIDE YOUR HOME

# EXCLUSIVE AMENITIES

Seaside by Prestige One presents a suite of refined amenities for an elevated waterfront living experience.



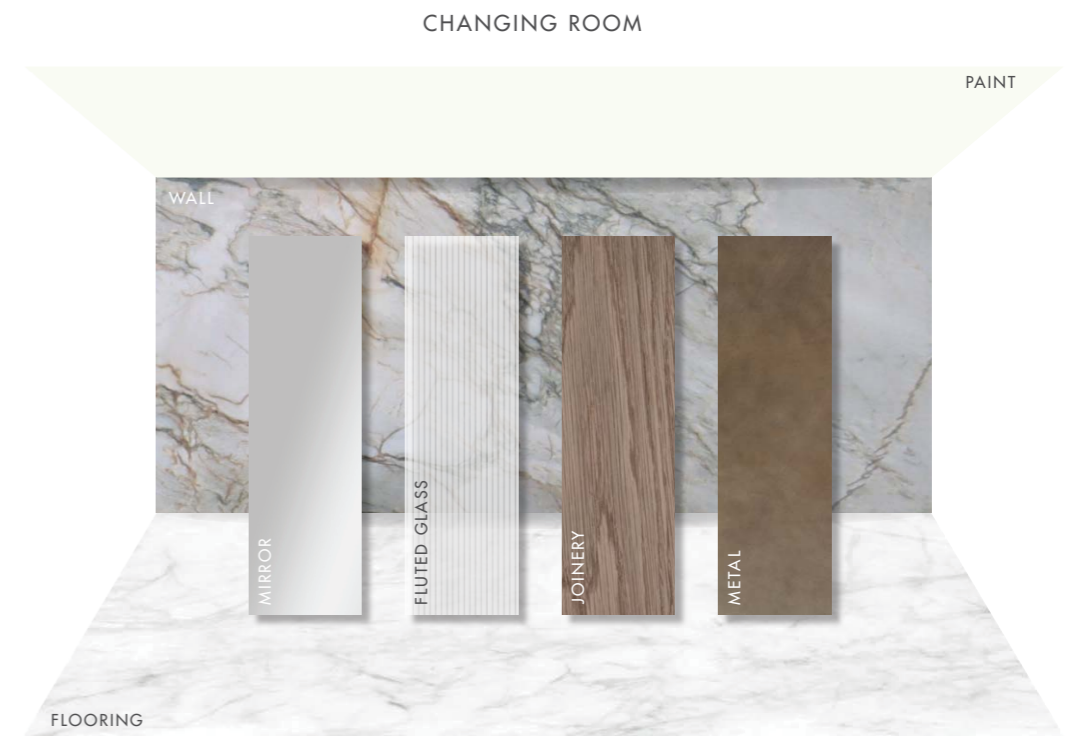


MINI PUTT GOLF



STAY ACTIVE, WITH A VIEW







# YOUR PERSONAL LIVING SPACE, REFINED LIVING WITH GRACE



KITCHEN ISLANDS  
FOR 1, 2, AND 3BR



SMART HOME  
SYSTEM



BUILT-IN  
APPLIANCES

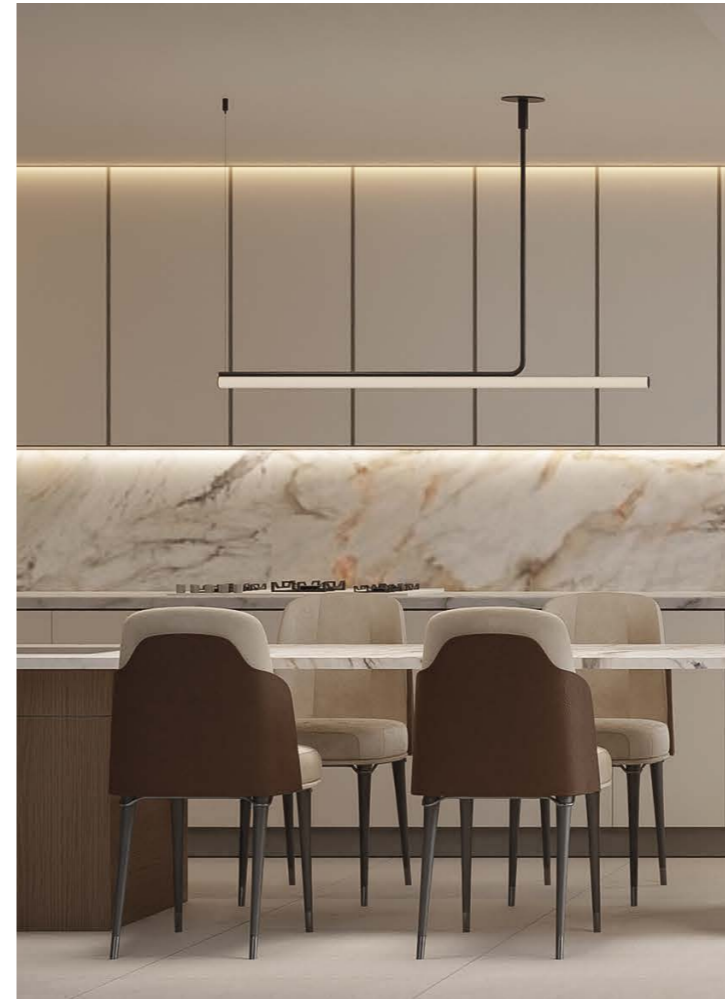


SOUNDPROOF  
UNITS

A BEDROOM THAT SUITS  
EVERY COMFORT AND STYLE



SEASIDE  
BY PRESTIGE ONE



APARTMENTS



PRESTIGE & EXCLUSIVE APARTMENTS

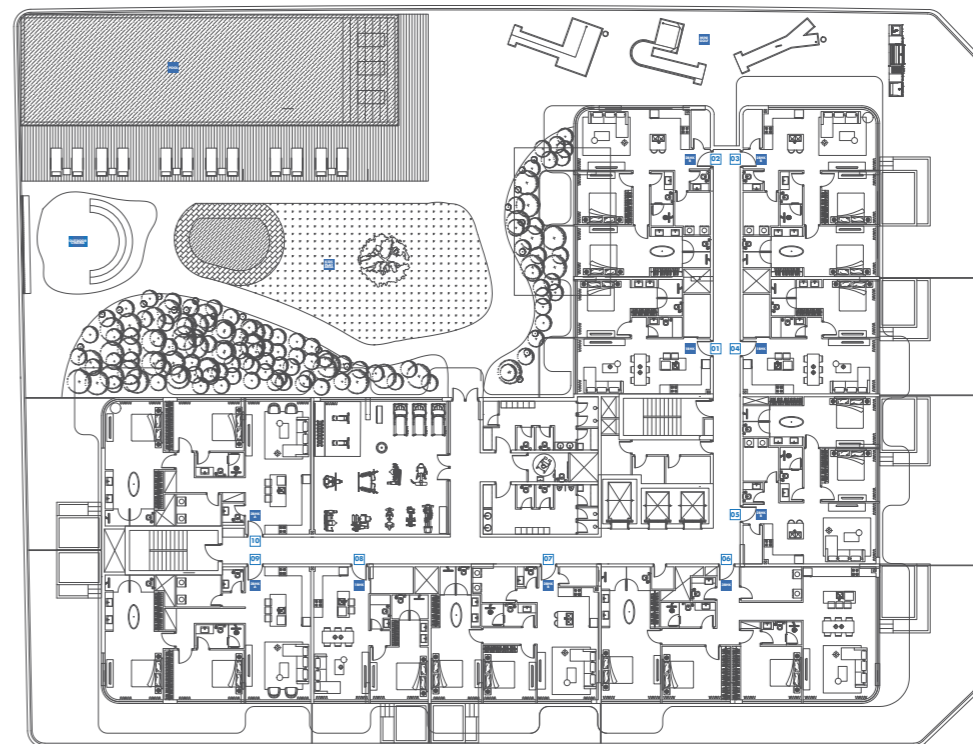


WELCOME HOME TO  
SEASIDE BY PRESTIGE ONE

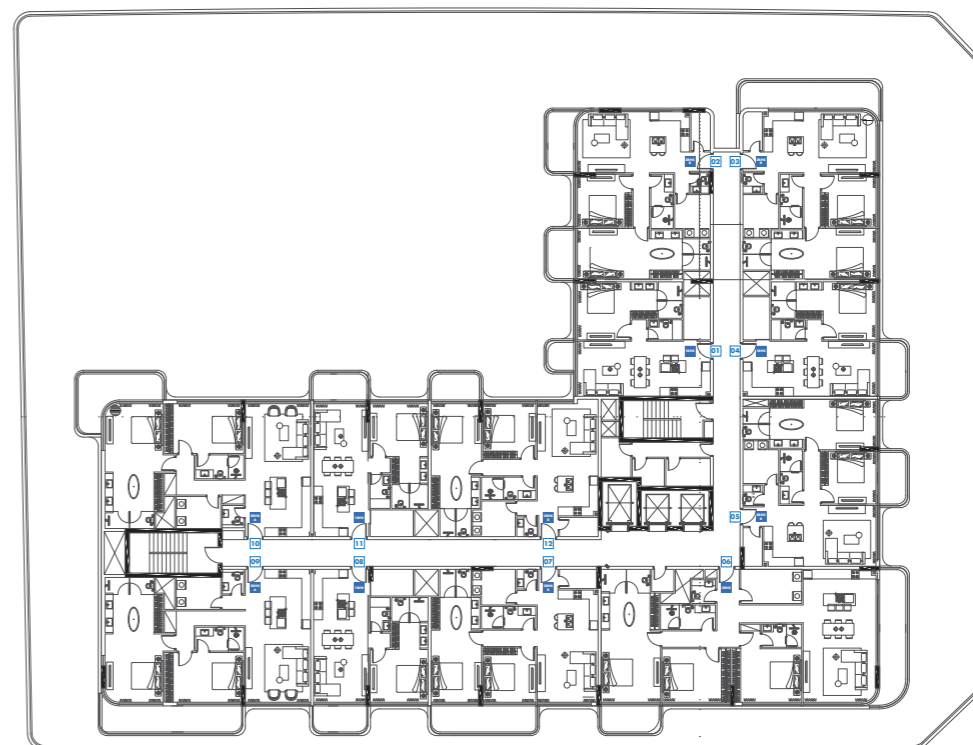


# TYPICAL FLOOR PLANS

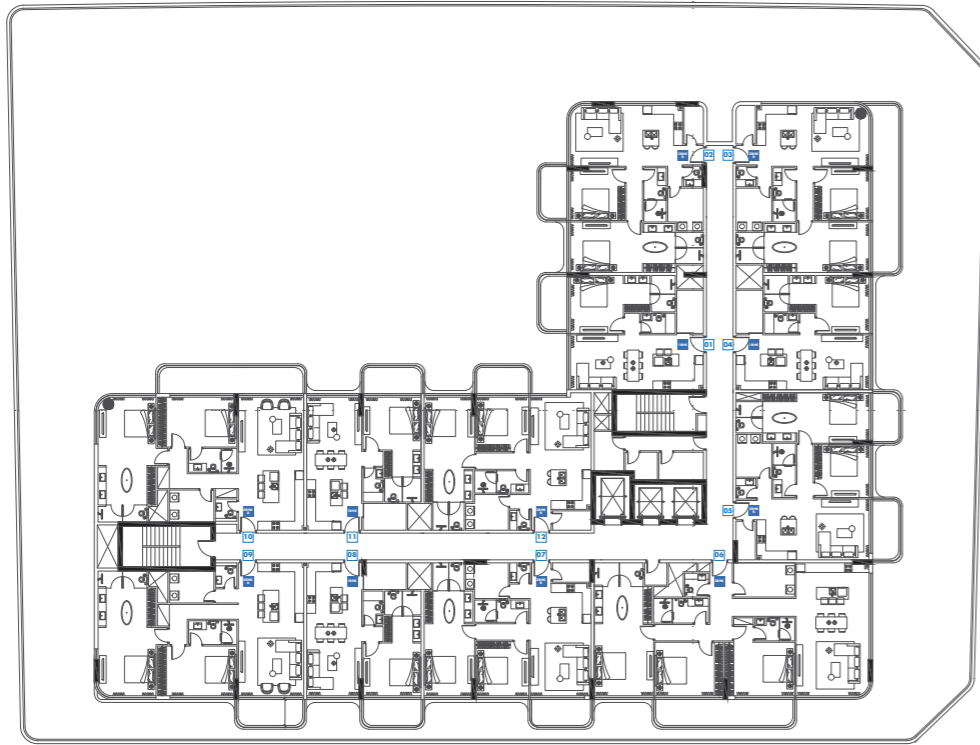
FIRST FLOOR | AMENITIES



2<sup>nd</sup>, 4<sup>th</sup>, 6<sup>th</sup>, 8<sup>th</sup> & 10<sup>th</sup> FLOORS



3<sup>rd</sup>, 5<sup>th</sup>, 7<sup>th</sup> & 9<sup>th</sup> FLOORS



APARTMENTS

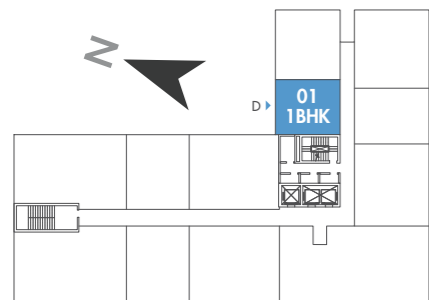
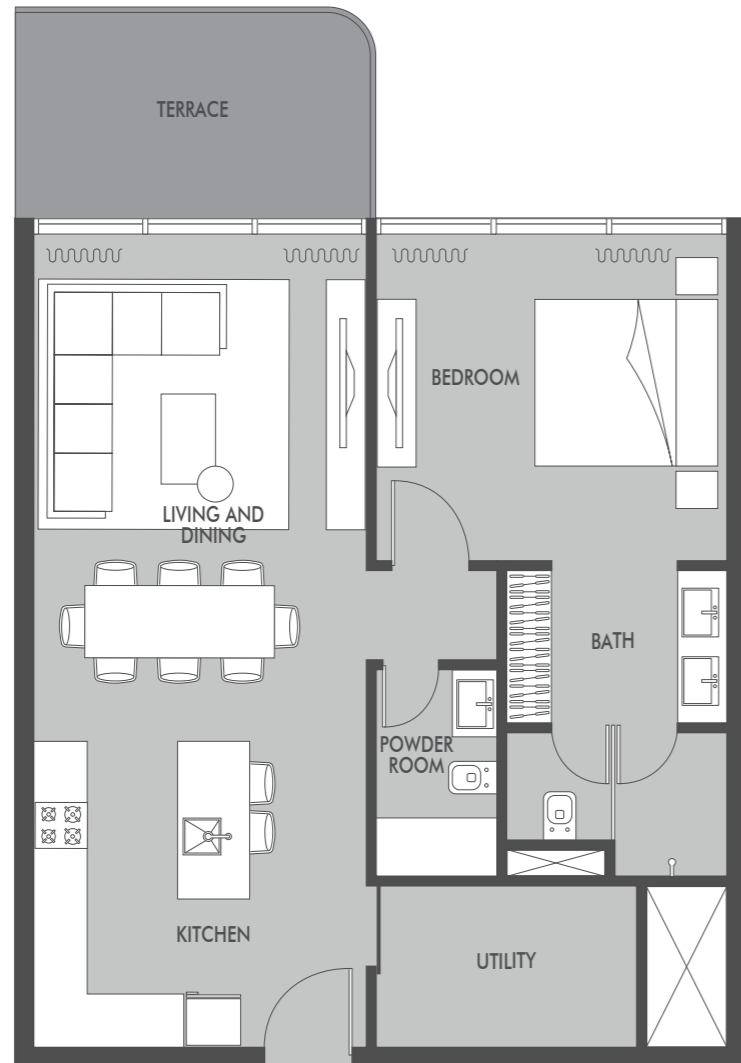


FIRST FLOOR

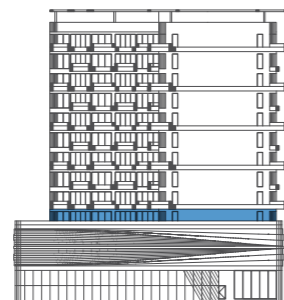
# 1-BEDROOM

# SEASIDE

BY PRESTIGE ONE



FIRST FLOOR



ELEVATION D

APARTMENT AREA  
775.00 SQ.FT.

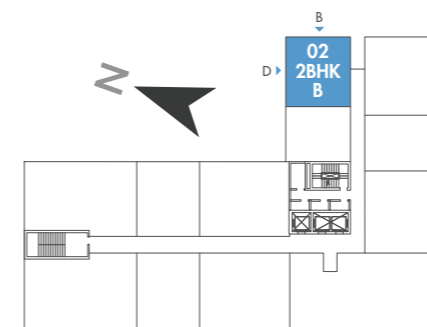
TERRACE AREA  
107.60 SQ.FT.

TOTAL AREA  
882.60 SQ.FT.

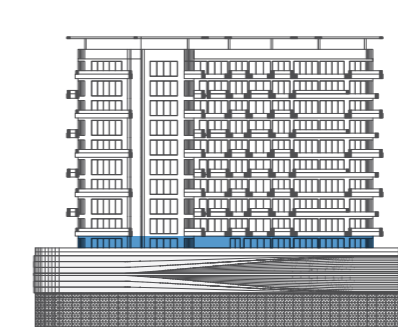
# 2-BEDROOM TYPE B

# SEASIDE

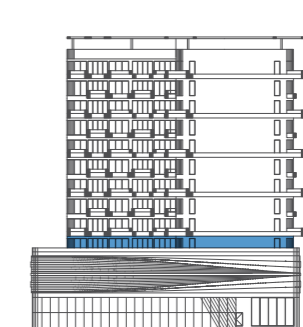
BY PRESTIGE ONE



FIRST FLOOR



ELEVATION B



ELEVATION D

APARTMENT AREA  
1162.00 SQ.FT.

TERRACE AREA  
96.90 SQ.FT.

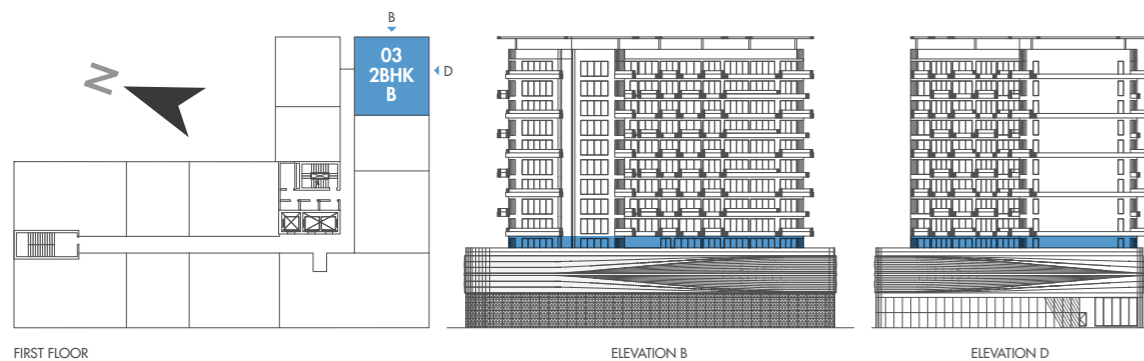
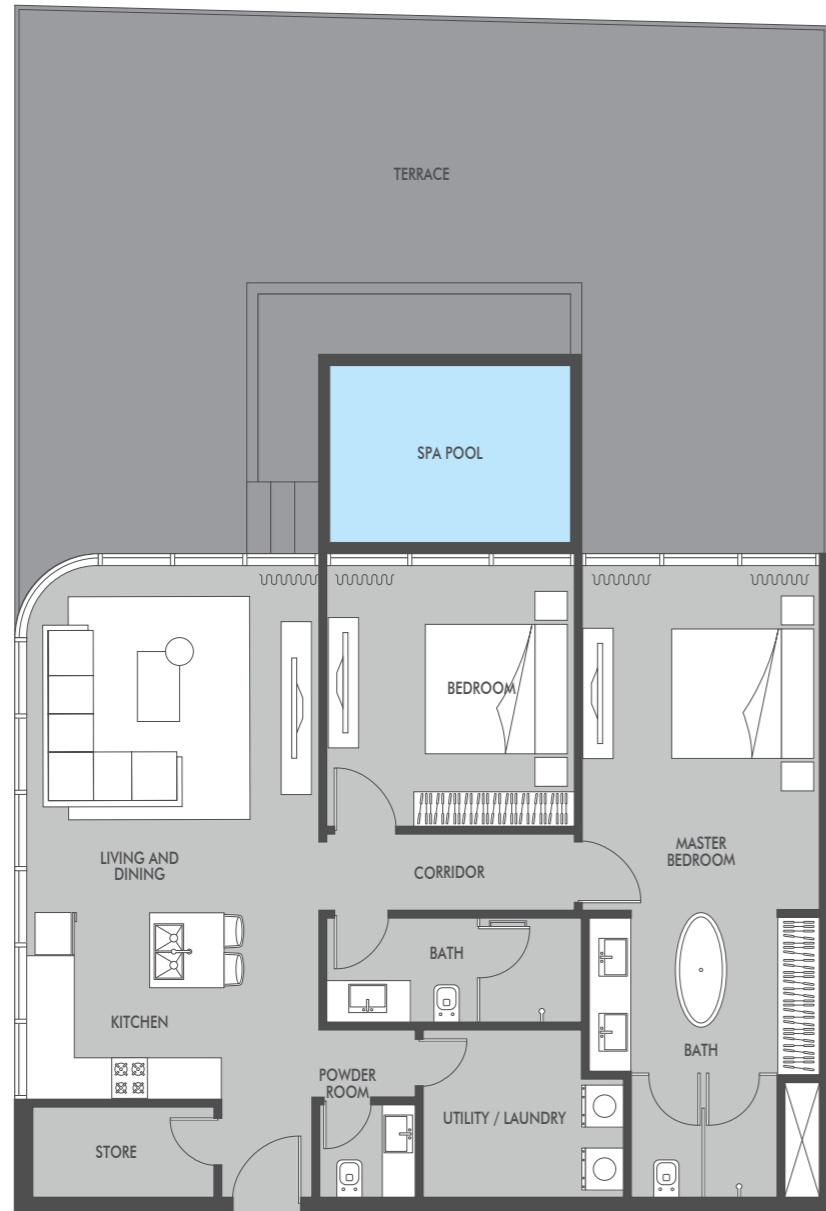
TOTAL AREA  
1258.90 SQ.FT.



# 2-BEDROOM TYPE B

# SEASIDE

BY PRESTIGE ONE



APARTMENT AREA  
1162.00 SQ.FT.

TERRACE AREA  
968.80 SQ.FT.

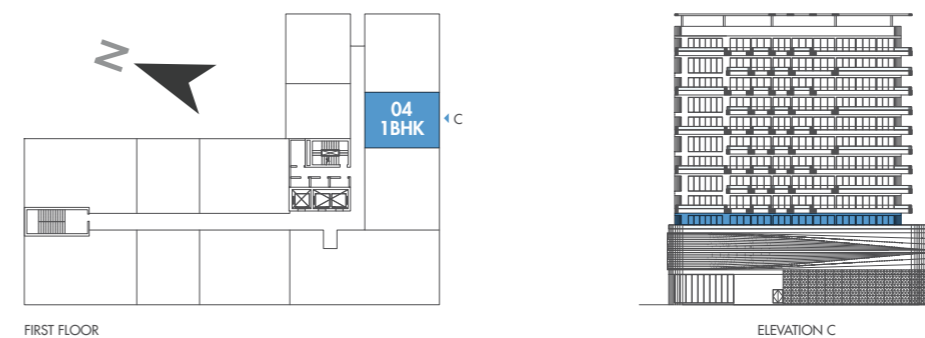
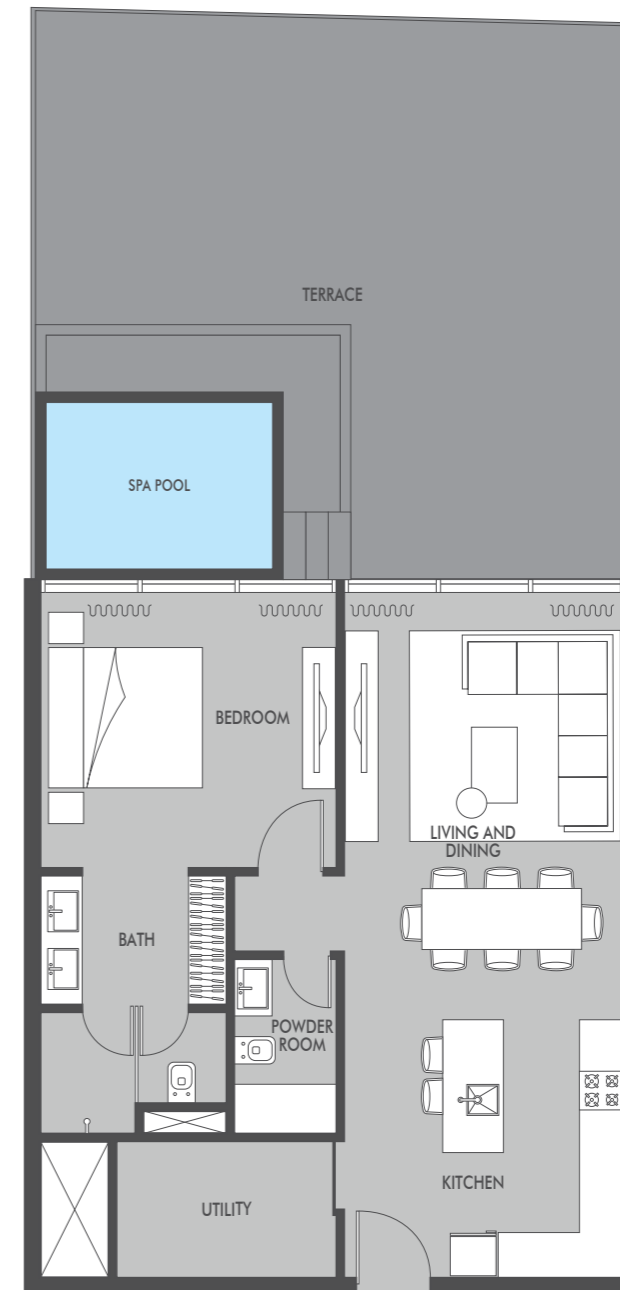
TOTAL AREA  
2130.80 SQ.FT.

All drawings and dimensions are approximate. Drawings are not to scale and are subject to change without notice. The developer reserves the right to make revisions. The units are measured at typical floor in the building and columns may vary in size depending on the floor level. The furnishings and accessories shown are for representation only. The length and width of the Unit and balcony varies depending on which floor and which orientation the unit is located within the building to comply with the building authority regulations. Apartment unit sizes may vary. Actual unit sizes will be reflected on the Sales and Purchase Agreement.

# 1-BEDROOM

# SEASIDE

BY PRESTIGE ONE



APARTMENT AREA  
775.00 SQ.FT.

TERRACE AREA  
635.00 SQ.FT.

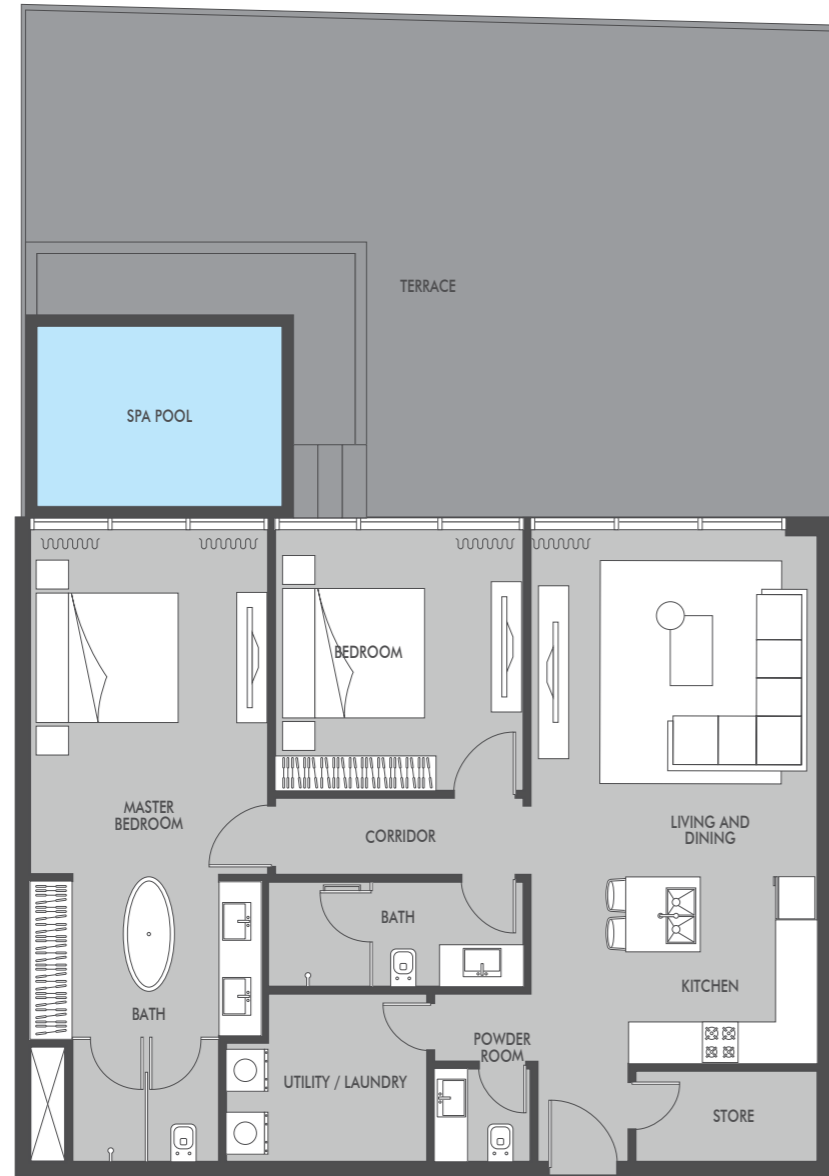
TOTAL AREA  
1410.00 SQ.FT.

All drawings and dimensions are approximate. Drawings are not to scale and are subject to change without notice. The developer reserves the right to make revisions. The units are measured at typical floor in the building and columns may vary in size depending on the floor level. The furnishings and accessories shown are for representation only. The length and width of the Unit and balcony varies depending on which floor and which orientation the unit is located within the building to comply with the building authority regulations. Apartment unit sizes may vary. Actual unit sizes will be reflected on the Sales and Purchase Agreement.

# 2-BEDROOM TYPE B

# SEASIDE

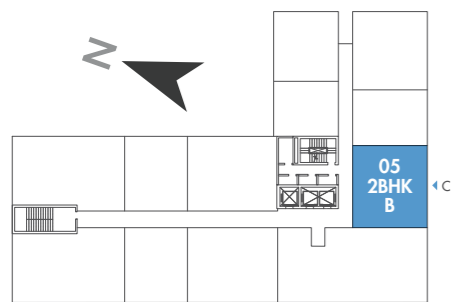
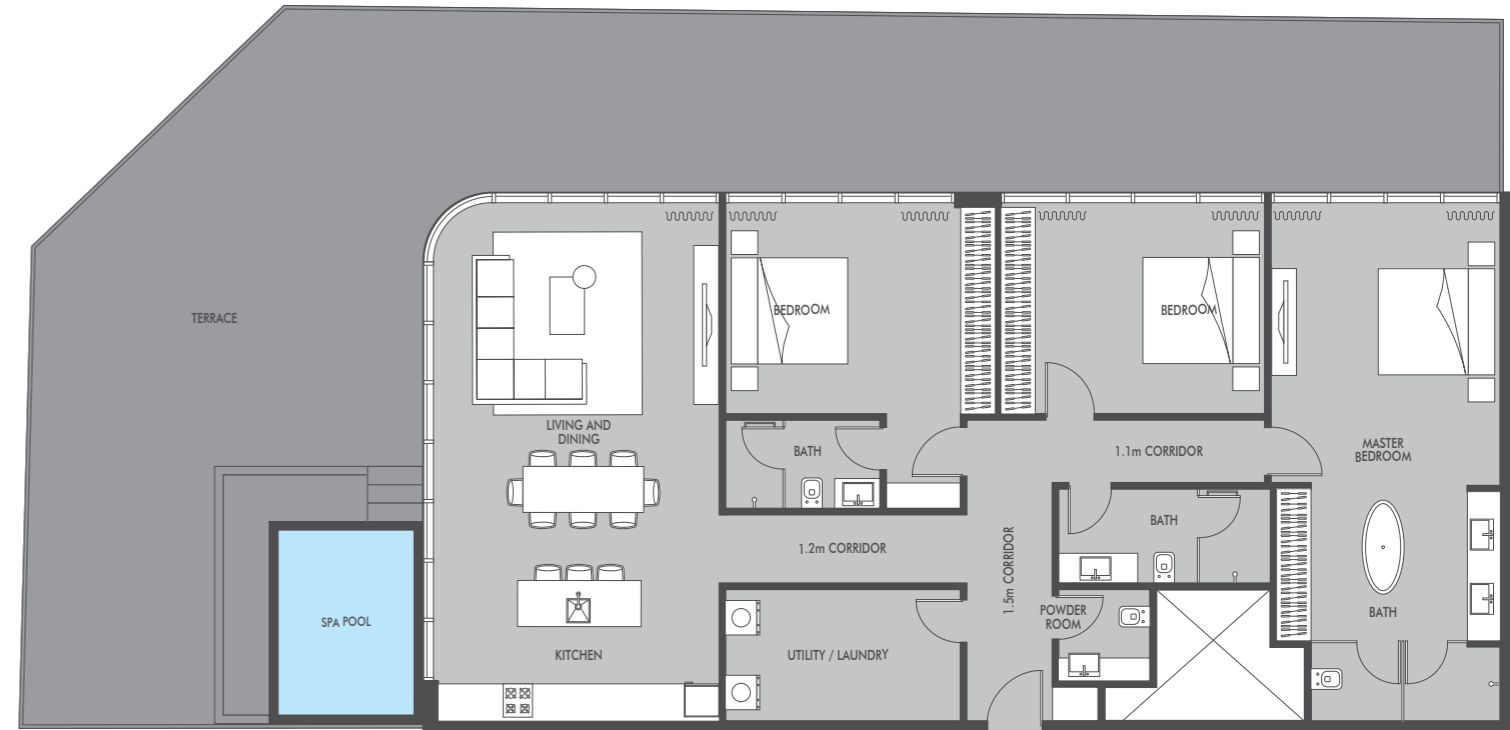
BY PRESTIGE ONE



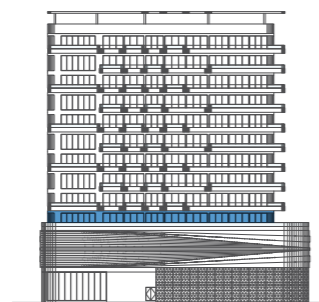
# 3-BEDROOM

# SEASIDE

BY PRESTIGE ONE



FIRST FLOOR

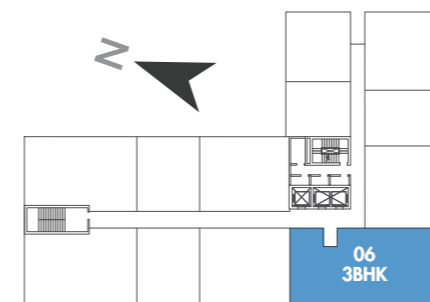


ELEVATION C

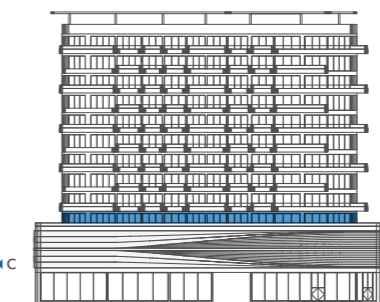
APARTMENT AREA  
1152.00 SQ.FT.

TERRACE AREA  
882.60 SQ.FT.

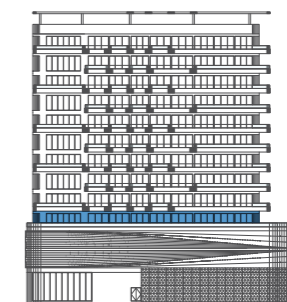
TOTAL AREA  
2034.60 SQ.FT.



FIRST FLOOR



ELEVATION A



ELEVATION C

APARTMENT AREA  
1829.80 SQ.FT.

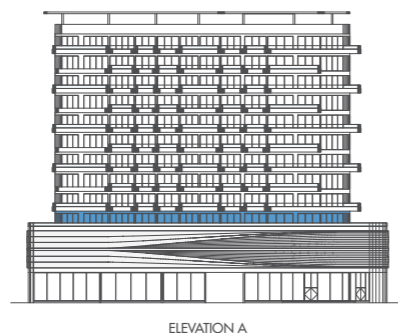
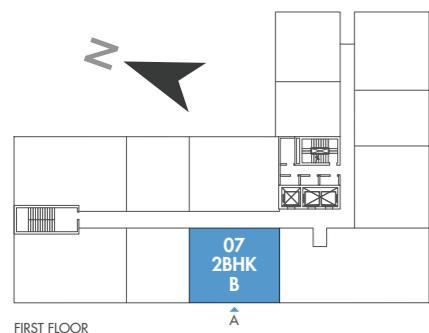
TERRACE AREA  
1474.70 SQ.FT.

TOTAL AREA  
3304.50 SQ.FT.

# 2-BEDROOM TYPE B

# SEASIDE

BY PRESTIGE ONE



APARTMENT AREA  
1152.00 SQ.FT.

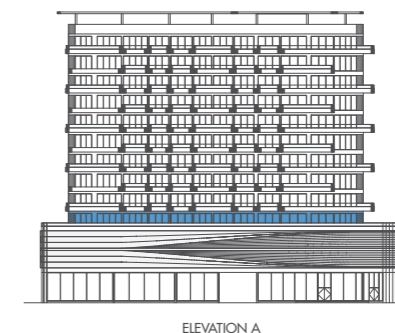
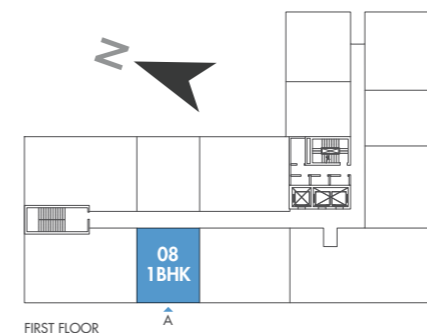
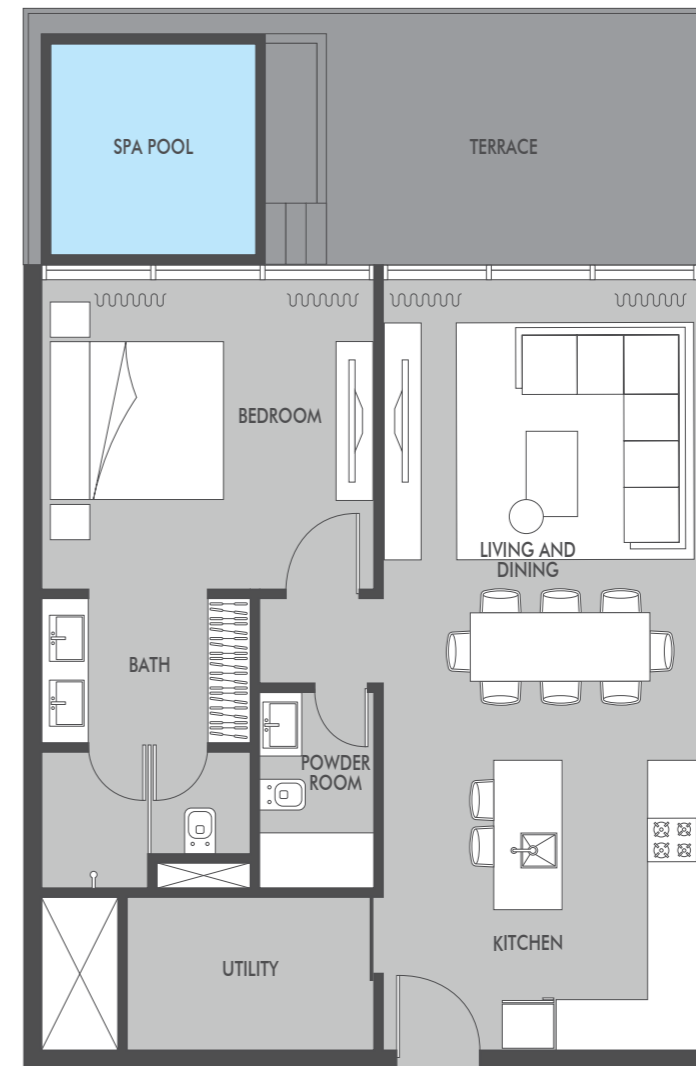
TERRACE AREA  
376.70 SQ.FT.

TOTAL AREA  
1528.70 SQ.FT.

# 1-BEDROOM

# SEASIDE

BY PRESTIGE ONE



APARTMENT AREA  
775.00 SQ.FT.

TERRACE AREA  
258.30 SQ.FT.

TOTAL AREA  
1033.30 SQ.FT.

# 2-BEDROOM TYPE A

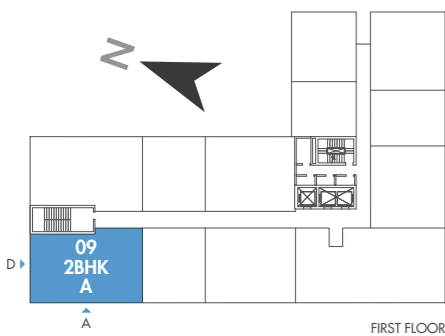
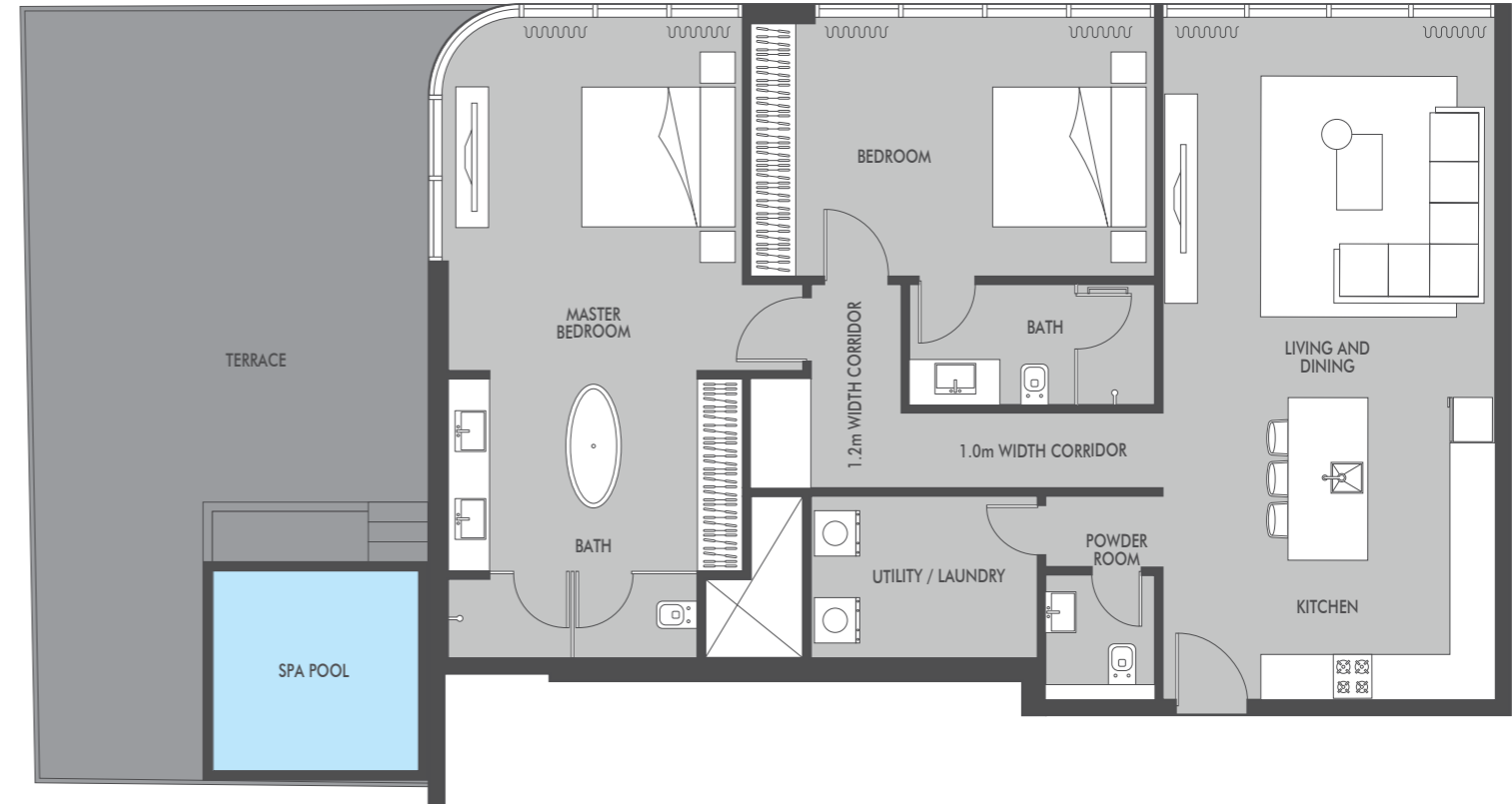
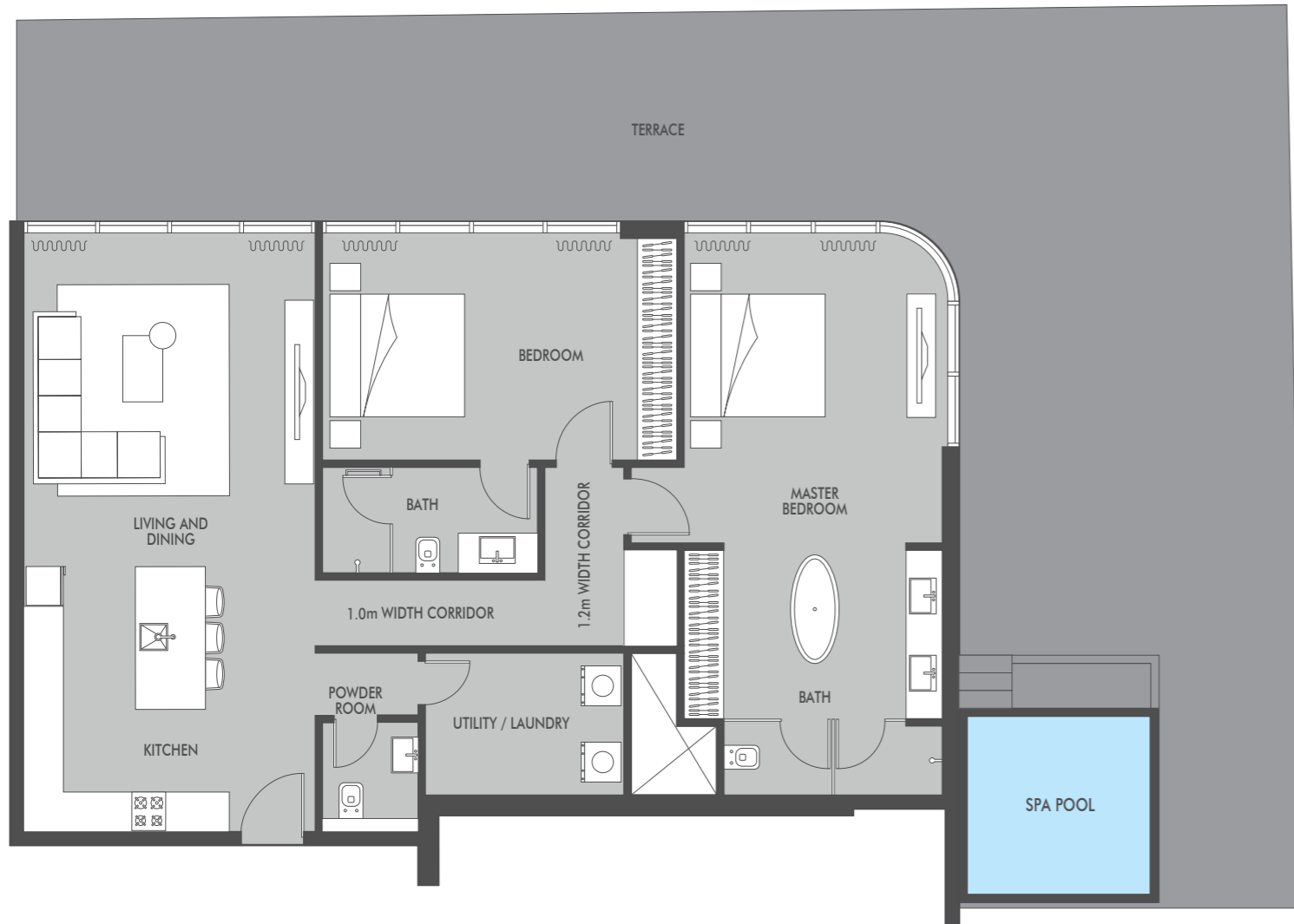
# SEASIDE

BY PRESTIGE ONE

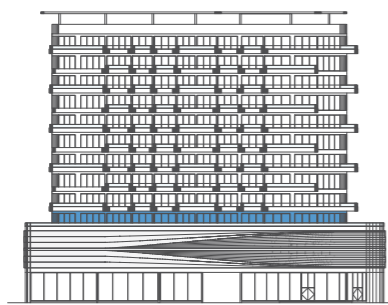
# 2-BEDROOM TYPE A

# SEASIDE

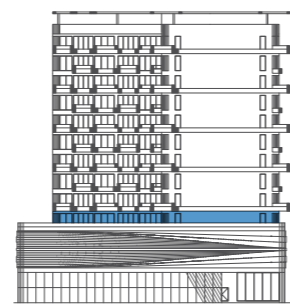
BY PRESTIGE ONE



FIRST FLOOR



ELEVATION A

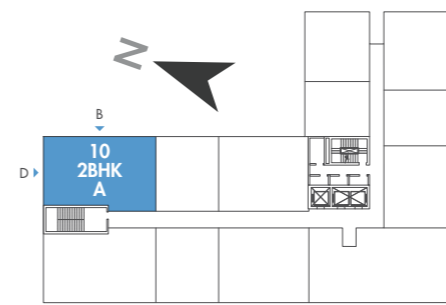


ELEVATION D

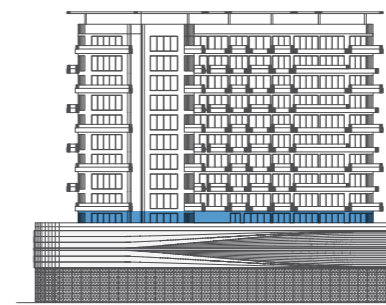
APARTMENT AREA  
1356.00 SQ.FT.

TERRACE AREA  
1216.30 SQ.FT.

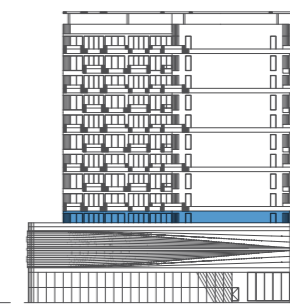
TOTAL AREA  
2572.30 SQ.FT.



FIRST FLOOR



ELEVATION B



ELEVATION D

APARTMENT AREA  
1346.00 SQ.FT.

TERRACE AREA  
592.00 SQ.FT.

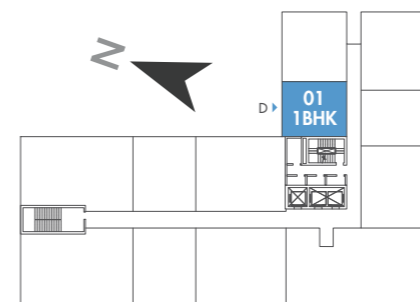
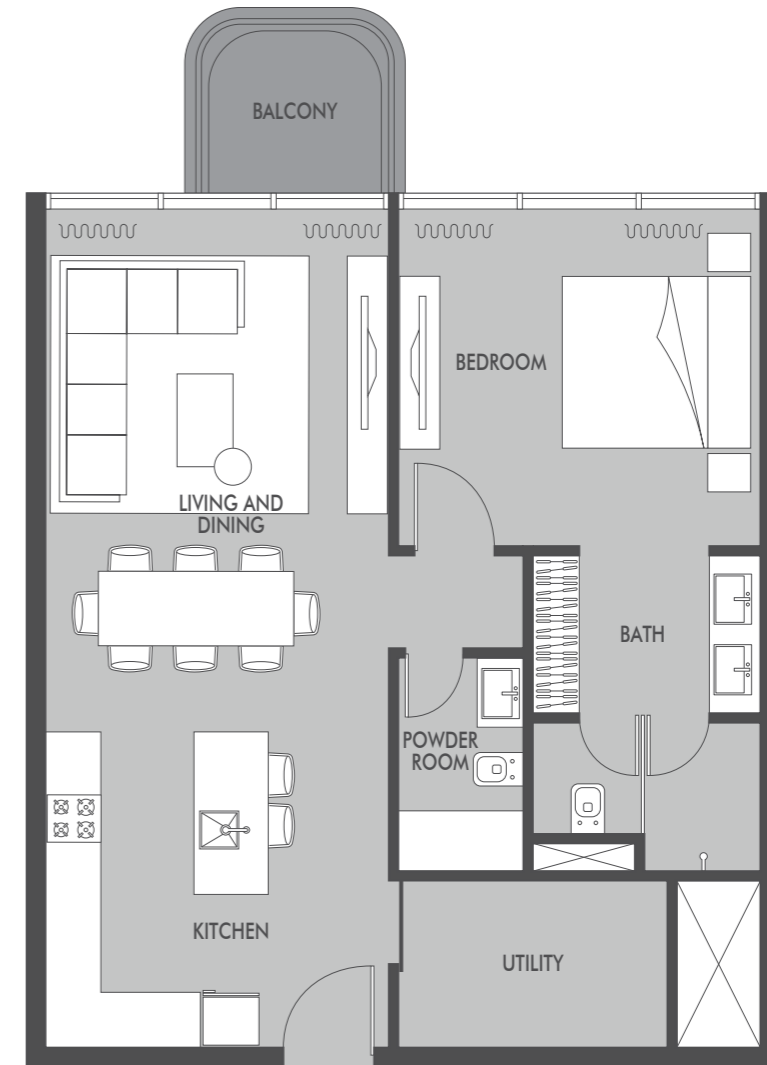
TOTAL AREA  
1938.00 SQ.FT.

# 1-BEDROOM

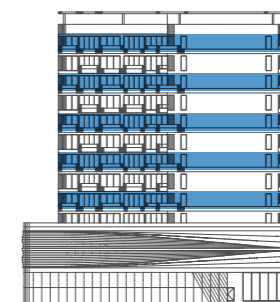
# SEASIDE

BY PRESTIGE ONE

2<sup>nd</sup> | 4<sup>th</sup> | 6<sup>th</sup> | 8<sup>th</sup> | 10<sup>th</sup>  
FLOORS



2<sup>nd</sup>, 4<sup>th</sup>, 6<sup>th</sup>, 8<sup>th</sup> & 10<sup>th</sup> FLOORS



ELEVATION D

APARTMENT AREA  
775.00 SQ.FT.

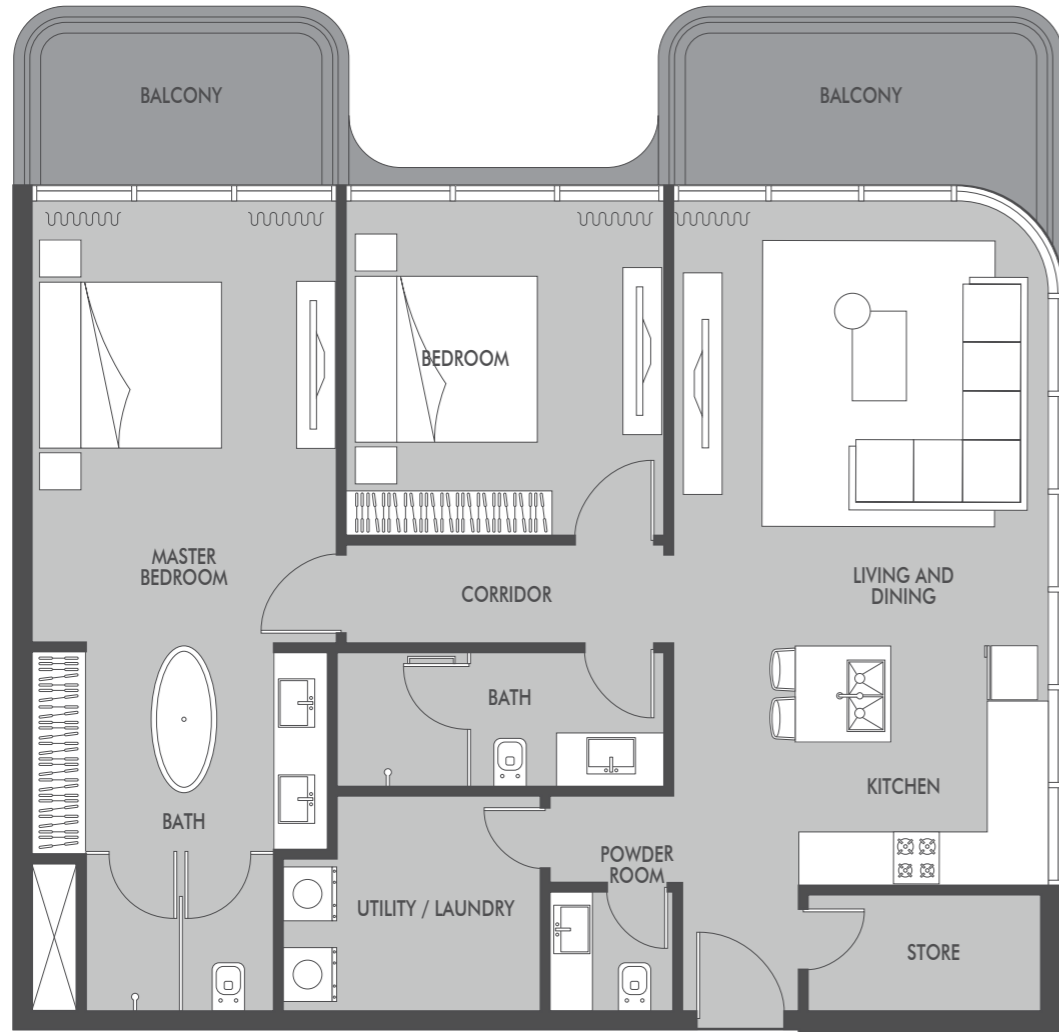
TERRACE AREA  
53.80 SQ.FT.

TOTAL AREA  
828.80 SQ.FT.

# 2-BEDROOM TYPE B

# SEASIDE

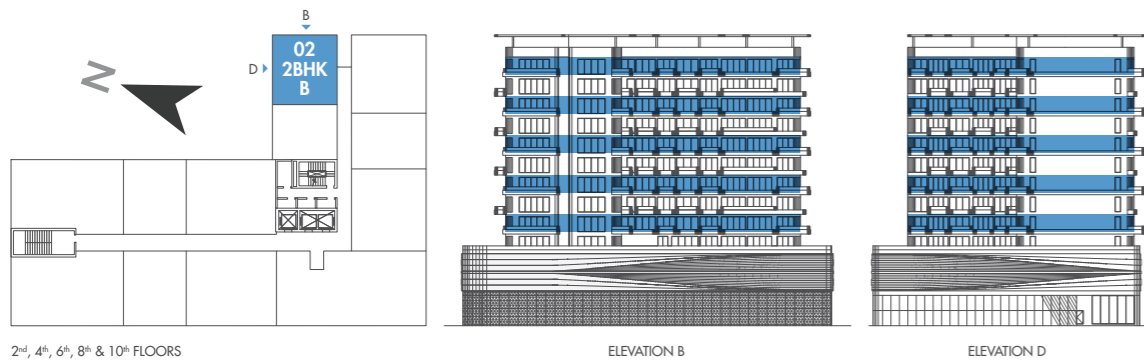
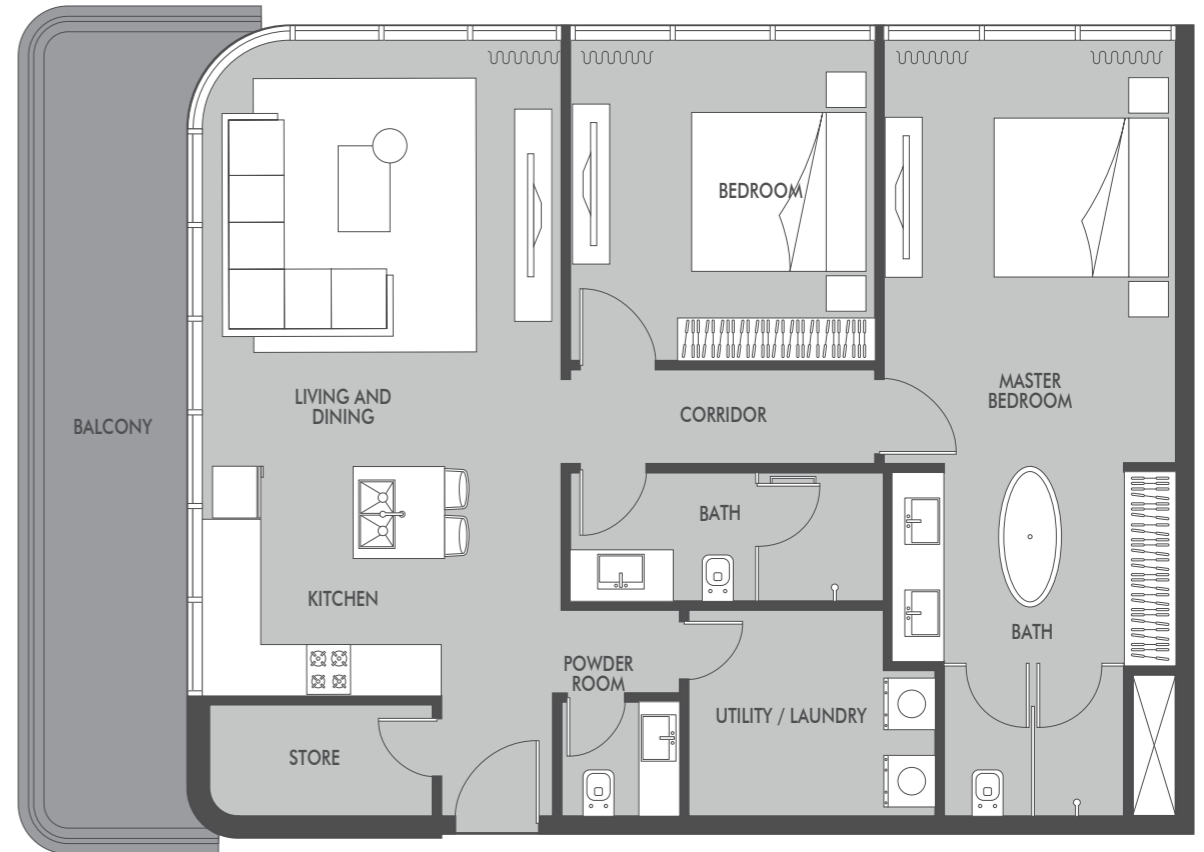
BY PRESTIGE ONE



# 2-BEDROOM TYPE B

# SEASIDE

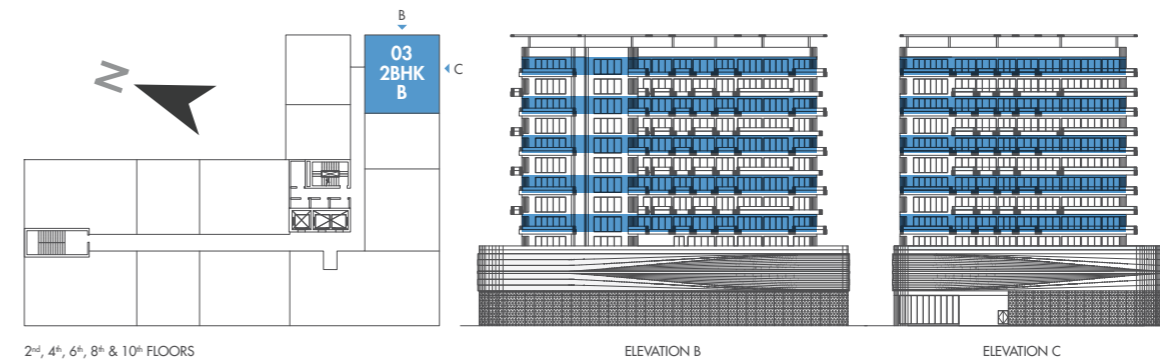
BY PRESTIGE ONE



APARTMENT AREA  
1162.00 SQ.FT.

TERRACE AREA  
182.90 SQ.FT.

TOTAL AREA  
1344.90 SQ.FT.



APARTMENT AREA  
1162.00 SQ.FT.

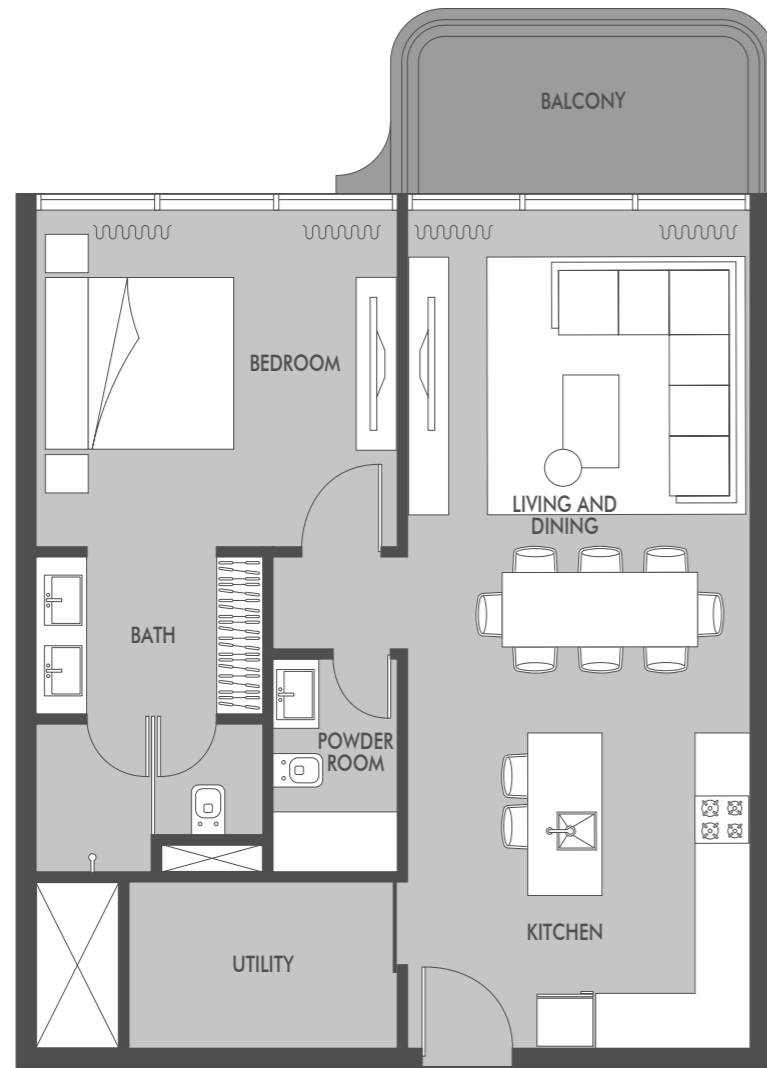
TERRACE AREA  
215.30 SQ.FT.

TOTAL AREA  
1377.30 SQ.FT.

# 1-BEDROOM

# SEASIDE

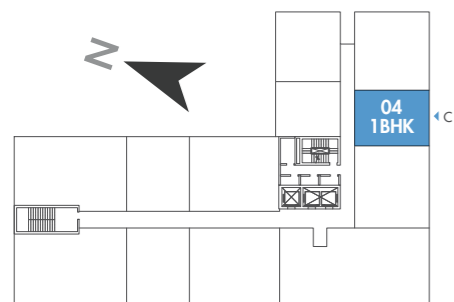
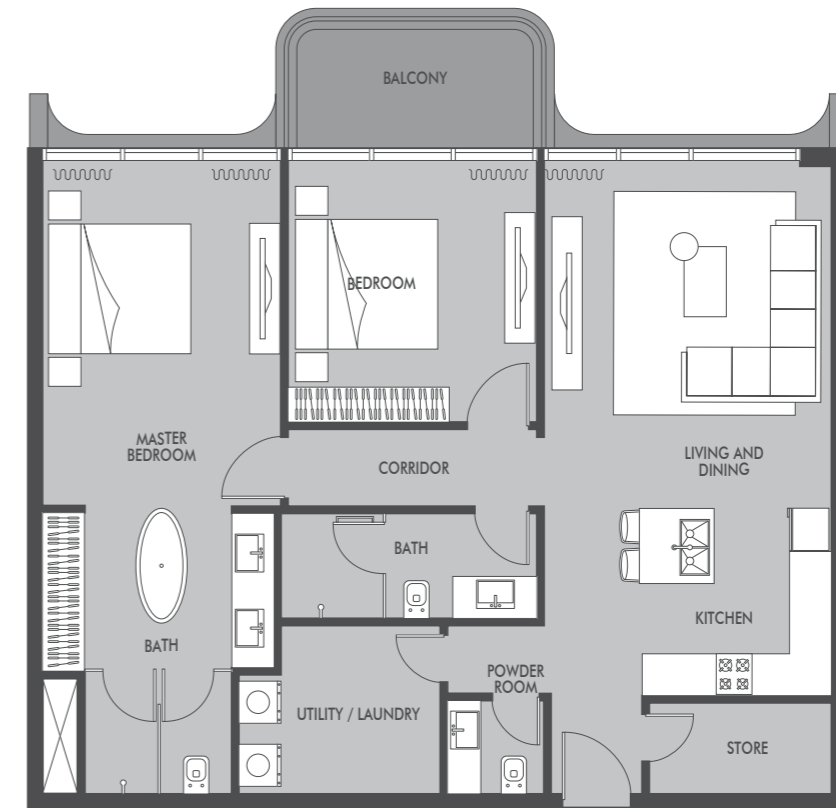
BY PRESTIGE ONE



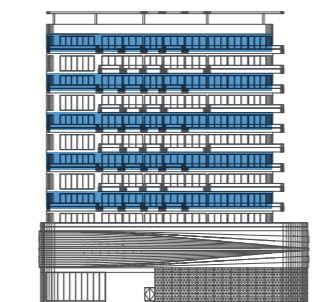
# 2-BEDROOM TYPE B

# SEASIDE

BY PRESTIGE ONE



2<sup>nd</sup>, 4<sup>th</sup>, 6<sup>th</sup>, 8<sup>th</sup> & 10<sup>th</sup> FLOORS

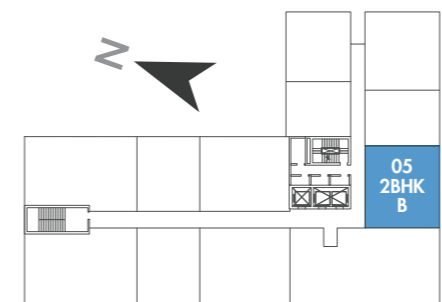


ELEVATION C

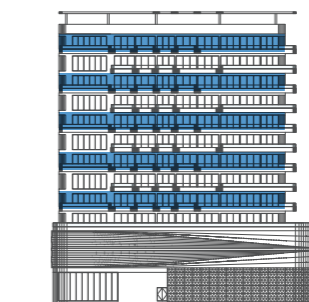
APARTMENT AREA  
775.00 SQ.FT.

TERRACE AREA  
86.10 SQ.FT.

TOTAL AREA  
861.10 SQ.FT.



2<sup>nd</sup>, 4<sup>th</sup>, 6<sup>th</sup>, 8<sup>th</sup> & 10<sup>th</sup> FLOORS



ELEVATION C

APARTMENT AREA  
1152.00 SQ.FT.

TERRACE AREA  
86.10 SQ.FT.

TOTAL AREA  
1238.10 SQ.FT.

# 3-BEDROOM

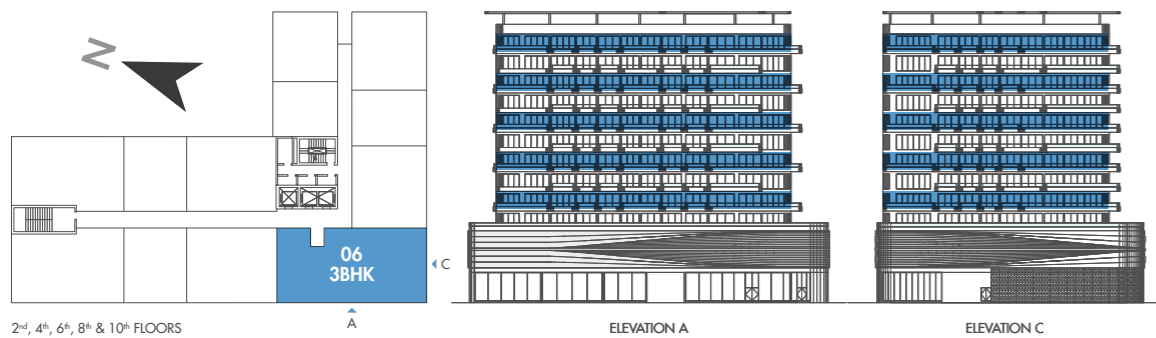
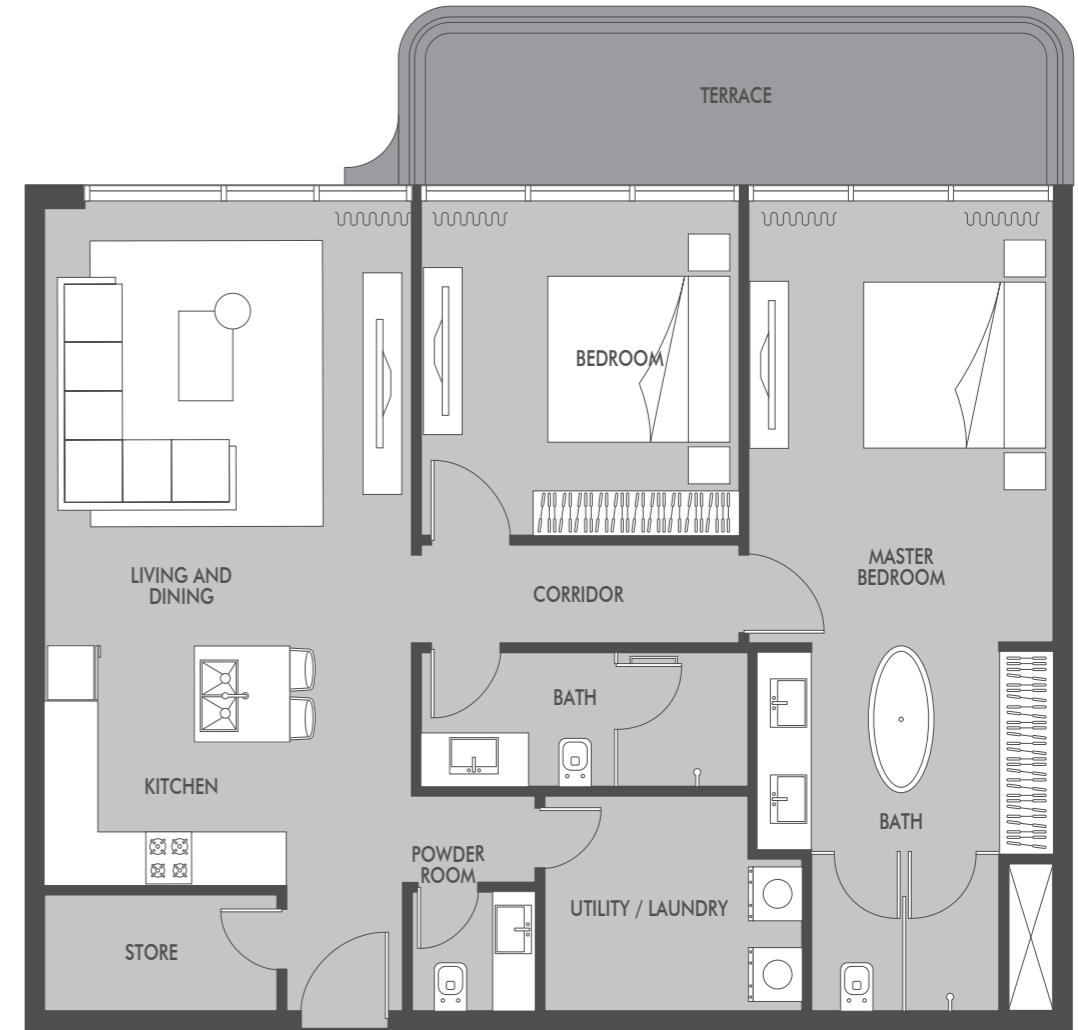
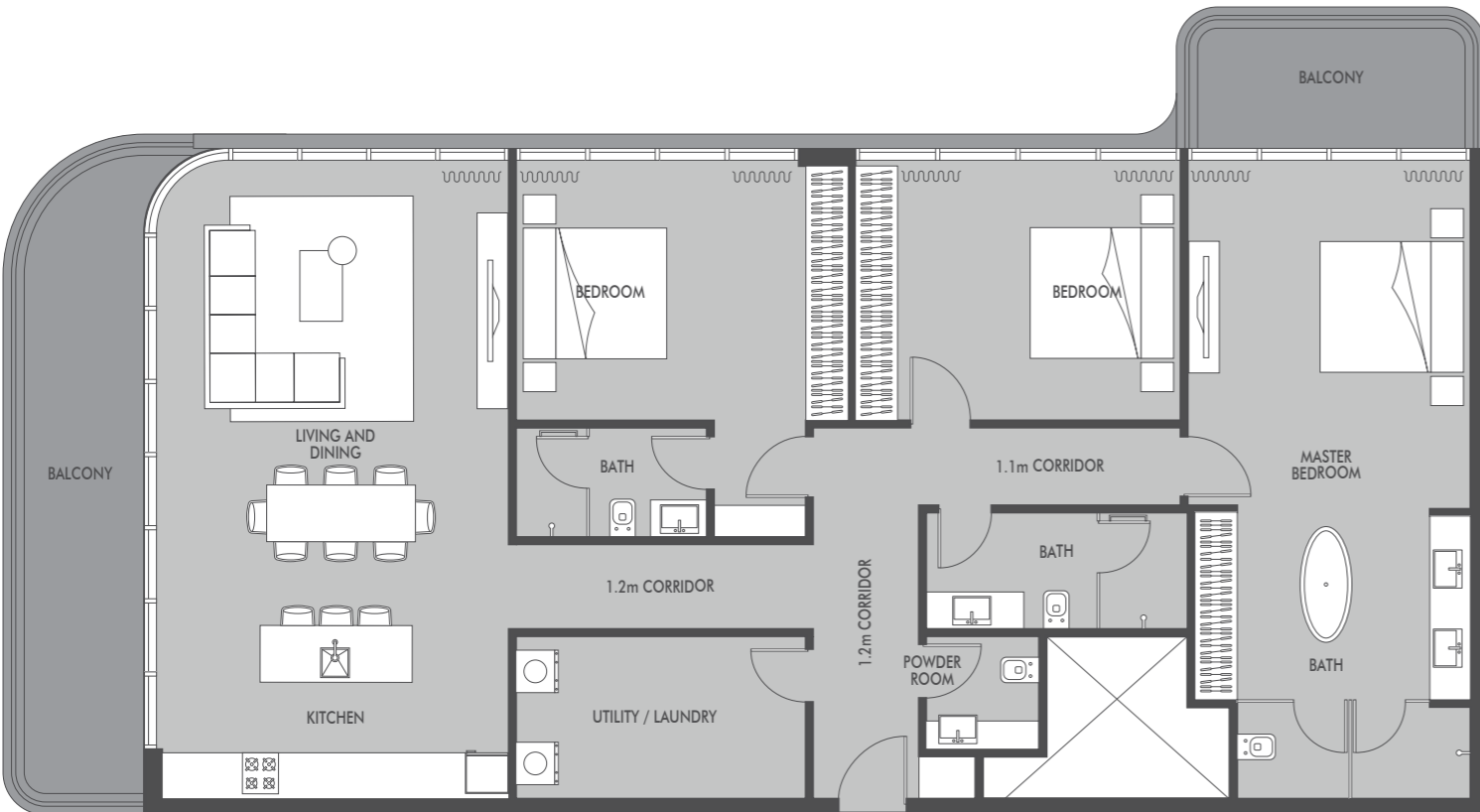
# SEASIDE

BY PRESTIGE ONE

# 2-BEDROOM TYPE B

# SEASIDE

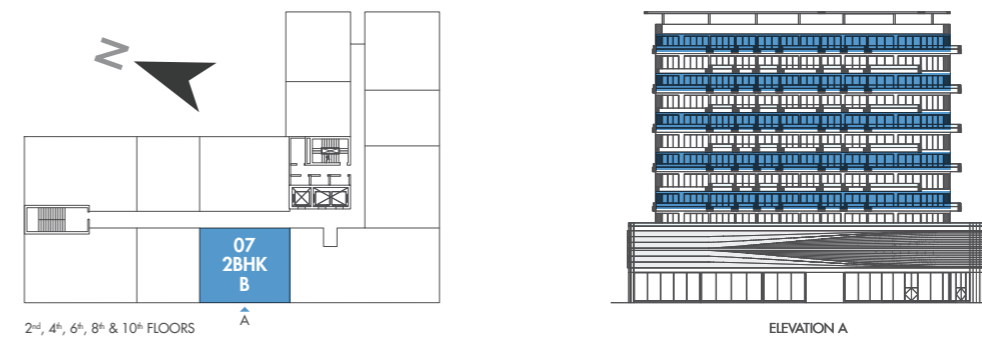
BY PRESTIGE ONE



APARTMENT AREA  
1829.80 SQ.FT.

TERRACE AREA  
290.60 SQ.FT.

TOTAL AREA  
2120.40 SQ.FT.



APARTMENT AREA  
1152.00 SQ.FT.

TERRACE AREA  
161.50 SQ.FT.

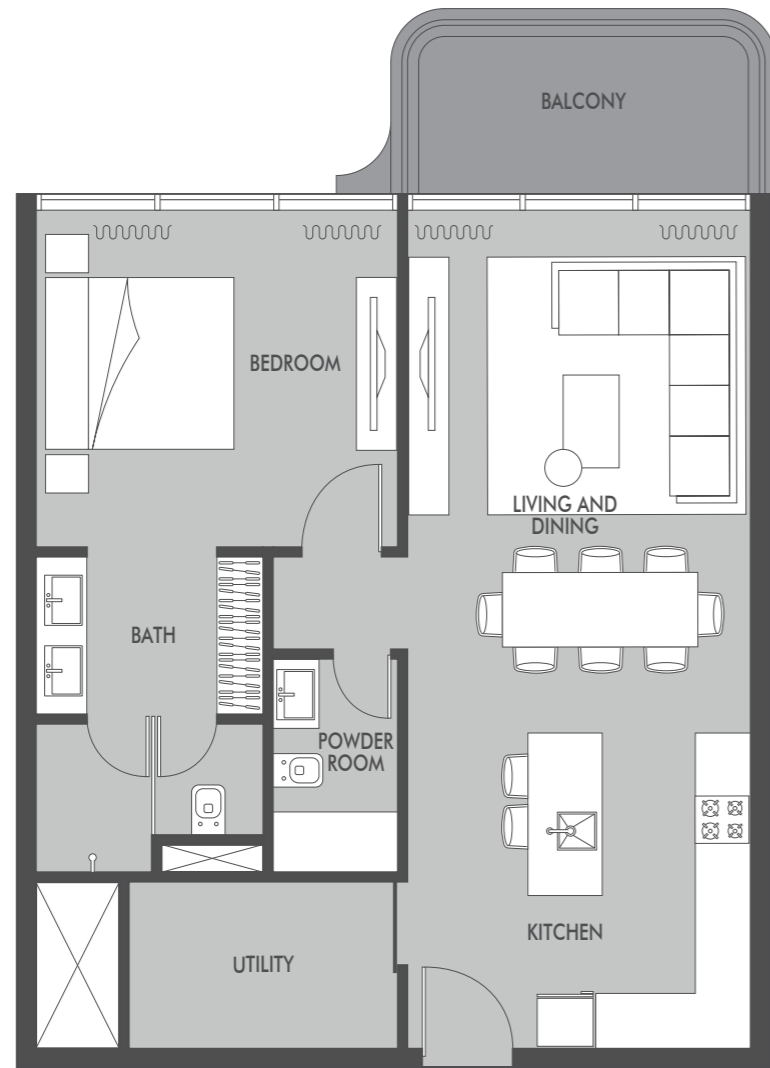
TOTAL AREA  
1313.50 SQ.FT.



# 1-BEDROOM

# SEASIDE

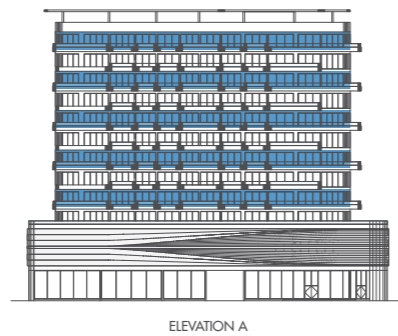
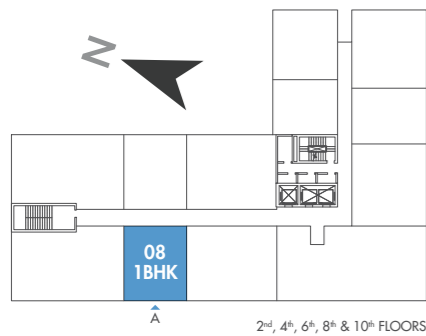
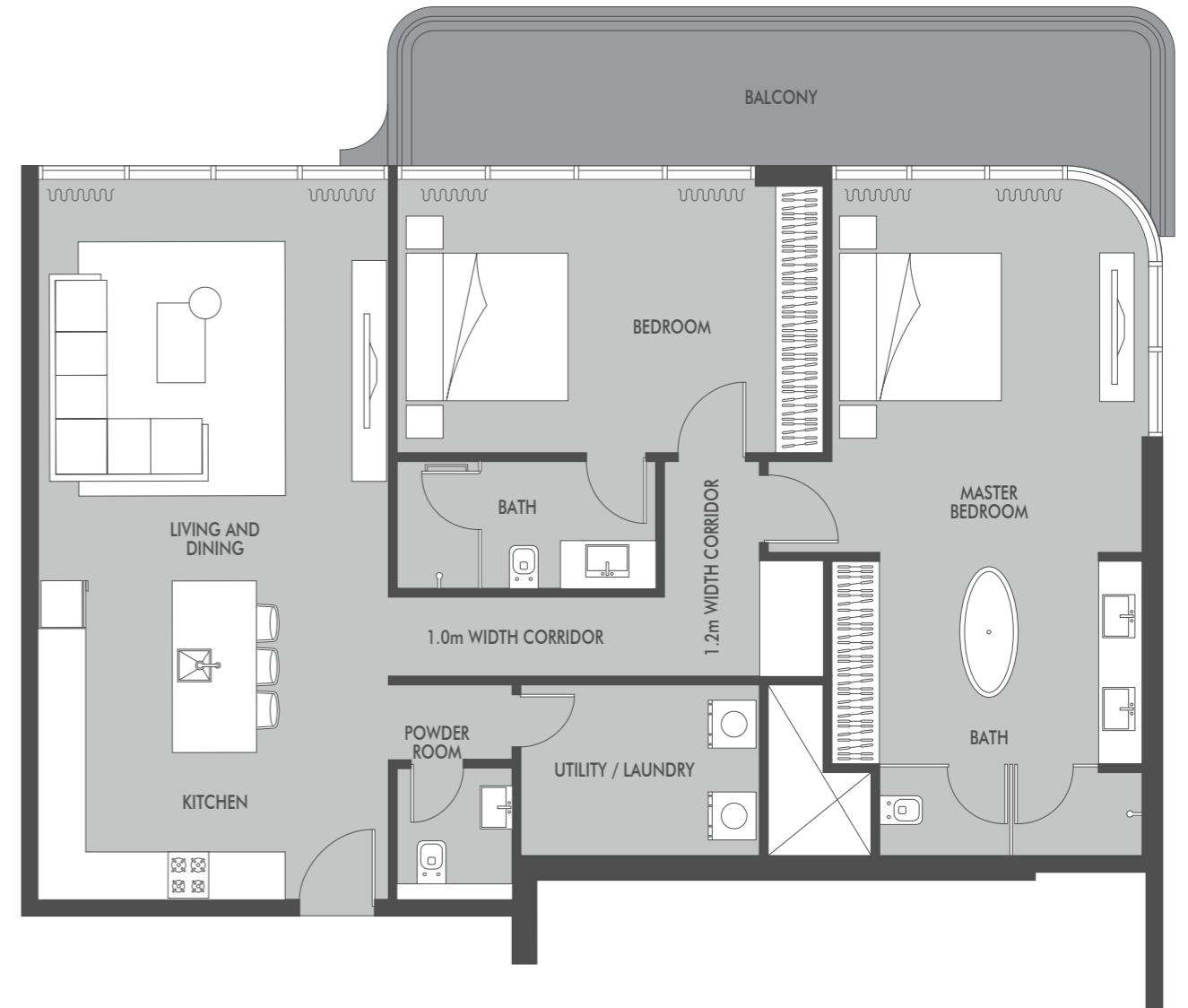
BY PRESTIGE ONE



# 2-BEDROOM TYPE A

# SEASIDE

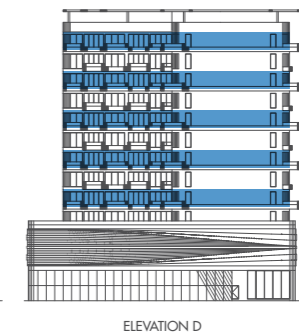
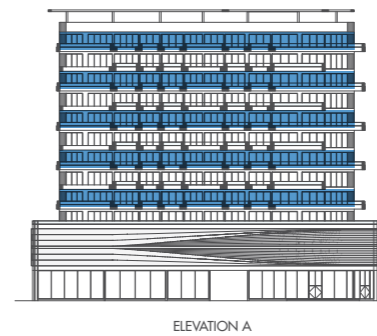
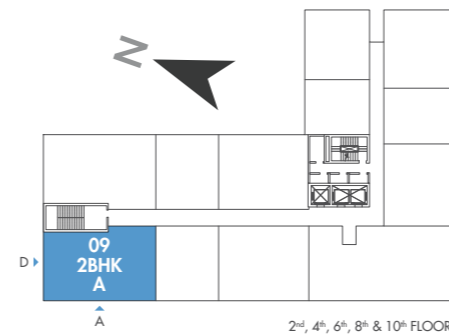
BY PRESTIGE ONE



APARTMENT AREA  
775.00 SQ.FT.

TERRACE AREA  
86.10 SQ.FT.

TOTAL AREA  
861.10 SQ.FT.



APARTMENT AREA  
1356.00 SQ.FT.

TERRACE AREA  
215.30 SQ.FT.

TOTAL AREA  
1571.30 SQ.FT.

# 2-BEDROOM TYPE A

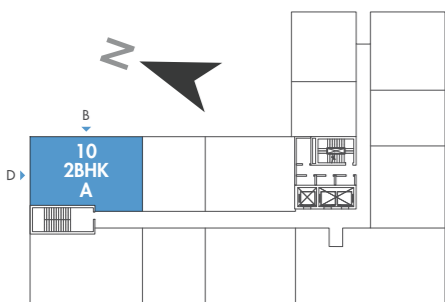
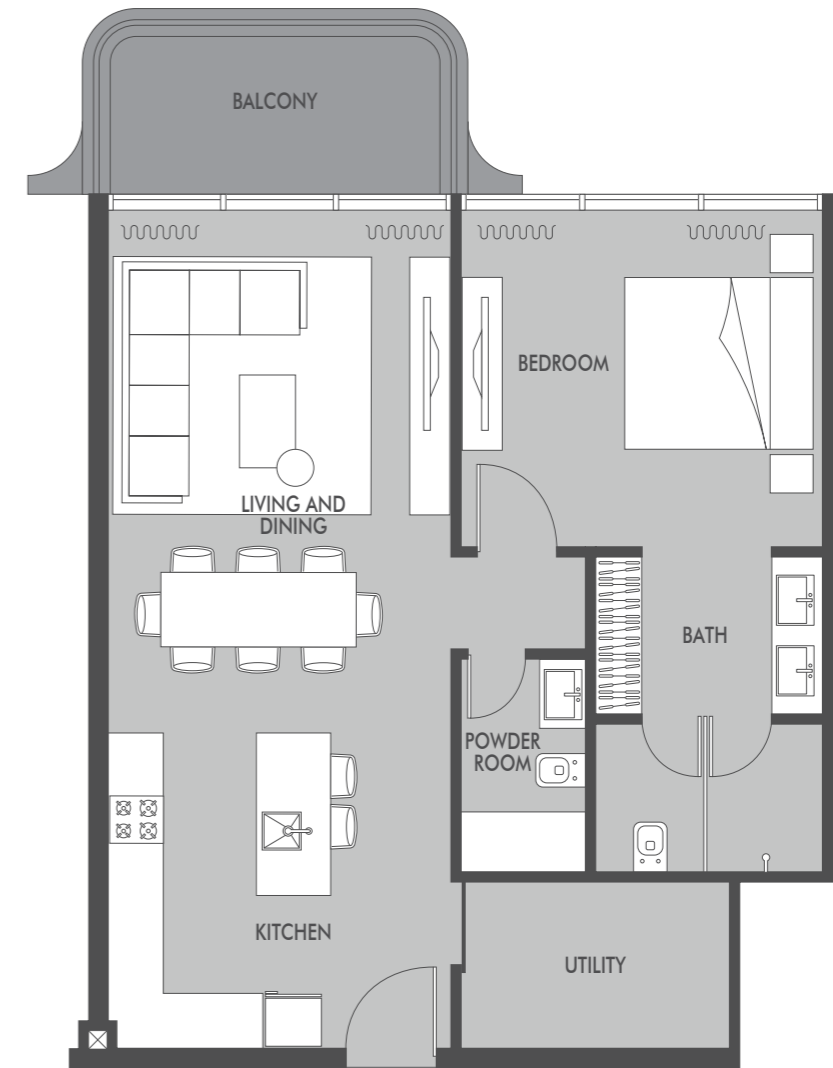
# SEASIDE

BY PRESTIGE ONE

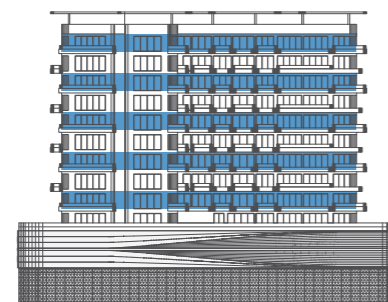
# 1-BEDROOM

# SEASIDE

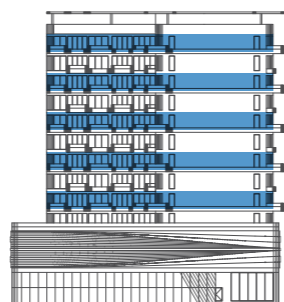
BY PRESTIGE ONE



2<sup>nd</sup>, 4<sup>th</sup>, 6<sup>th</sup>, 8<sup>th</sup> & 10<sup>th</sup> FLOORS



ELEVATION B

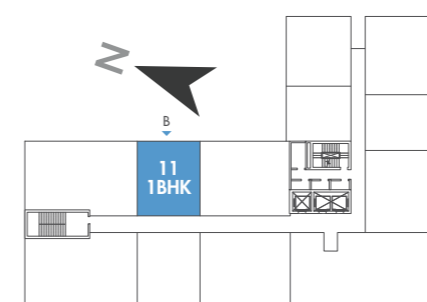


ELEVATION D

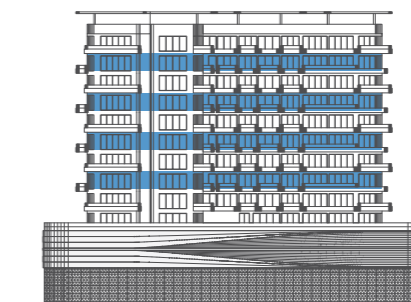
APARTMENT AREA  
1346.00 SQ.FT.

TERRACE AREA  
182.90 SQ.FT.

TOTAL AREA  
1528.90 SQ.FT.



3<sup>rd</sup>, 5<sup>th</sup>, 7<sup>th</sup> & 9<sup>th</sup> FLOORS



ELEVATION B

APARTMENT AREA  
775.00 SQ.FT.

TERRACE AREA  
86.10 SQ.FT.

TOTAL AREA  
861.10 SQ.FT.

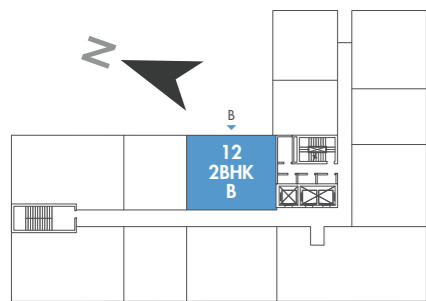
# 2-BEDROOM TYPE B

# SEASIDE

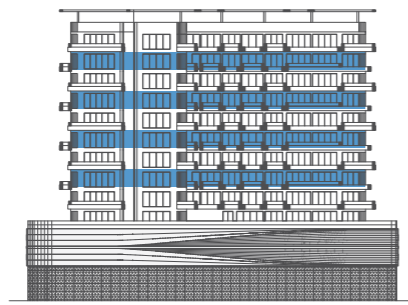
BY PRESTIGE ONE



3<sup>rd</sup> | 5<sup>th</sup> | 7<sup>th</sup> | 9<sup>th</sup>  
FLOORS



3<sup>rd</sup>, 5<sup>th</sup>, 7<sup>th</sup> & 9<sup>th</sup> FLOORS



ELEVATION B

APARTMENT AREA  
1152.00 SQ.FT.

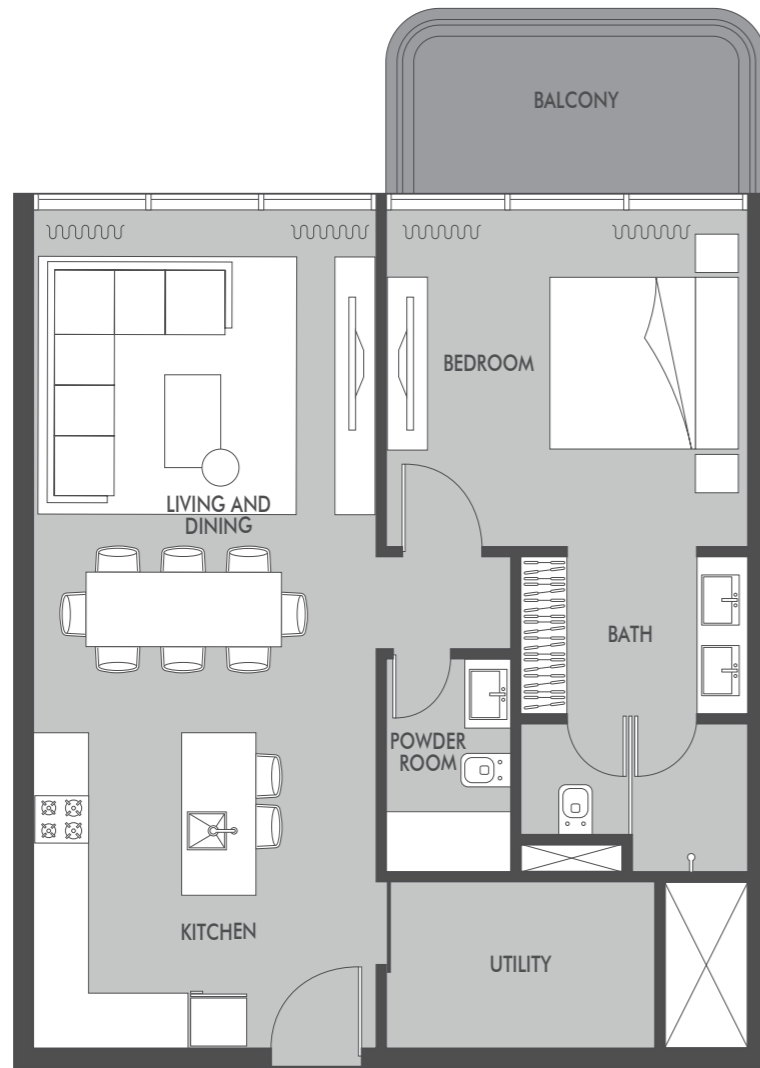
TERRACE AREA  
75.30 SQ.FT.

TOTAL AREA  
1227.30 SQ.FT.

# 1-BEDROOM

# SEASIDE

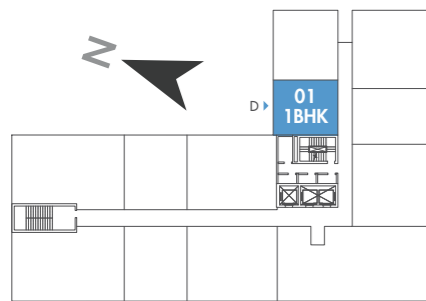
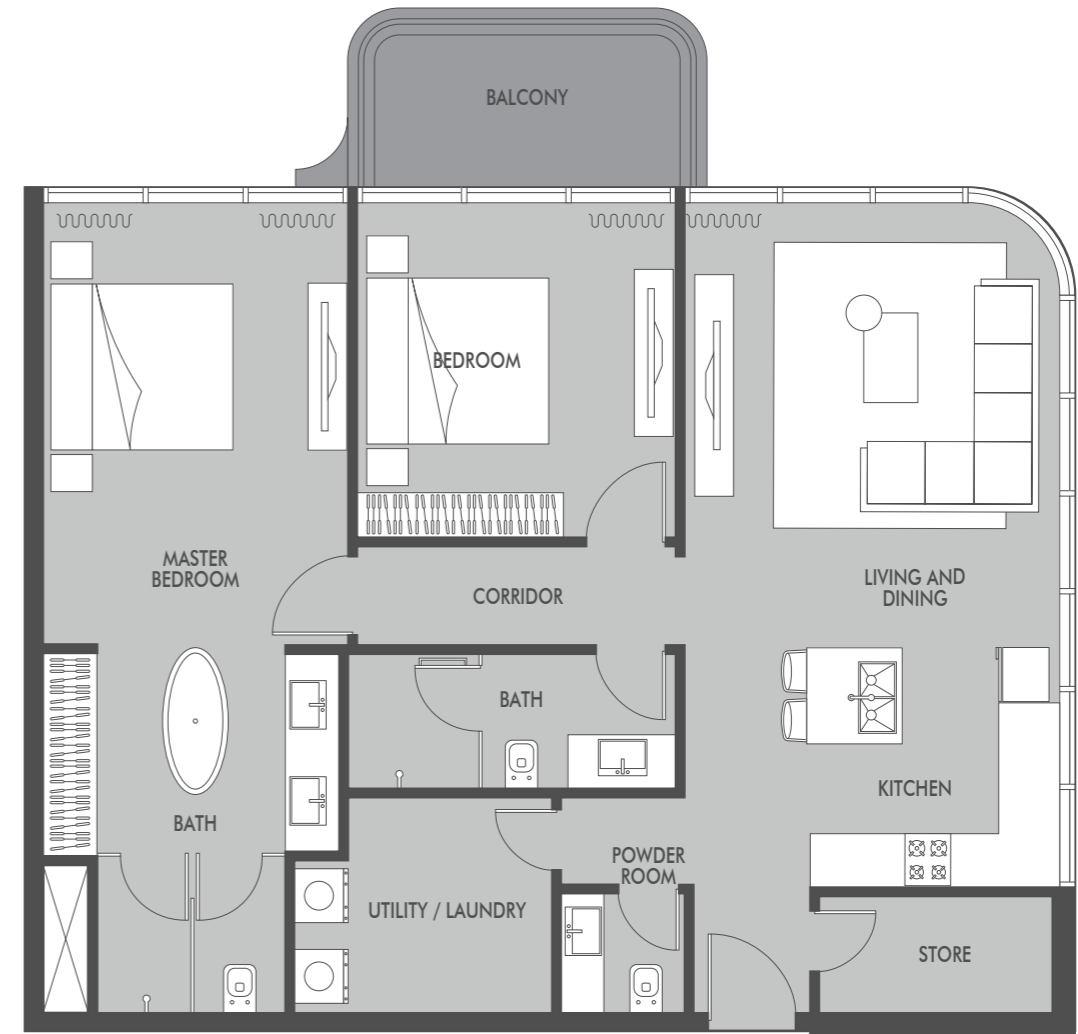
BY PRESTIGE ONE



# 2-BEDROOM TYPE B

# SEASIDE

BY PRESTIGE ONE



3<sup>rd</sup>, 5<sup>th</sup>, 7<sup>th</sup> & 9<sup>th</sup> FLOORS

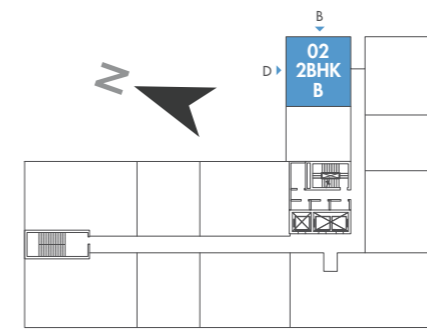


ELEVATION D

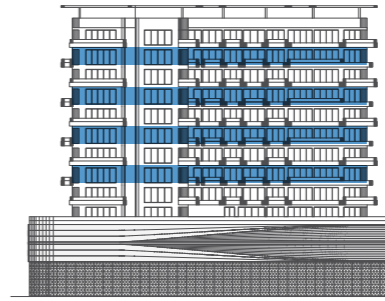
APARTMENT AREA  
775.00 SQ.FT.

TERRACE AREA  
86.10 SQ.FT.

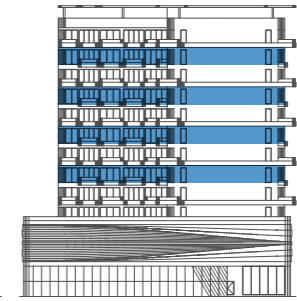
TOTAL AREA  
861.10 SQ.FT.



3<sup>rd</sup>, 5<sup>th</sup>, 7<sup>th</sup> & 9<sup>th</sup> FLOORS



ELEVATION B



ELEVATION D

APARTMENT AREA  
1162.00 SQ.FT.

TERRACE AREA  
86.10 SQ.FT.

TOTAL AREA  
1248.10 SQ.FT.

# 2-BEDROOM TYPE B

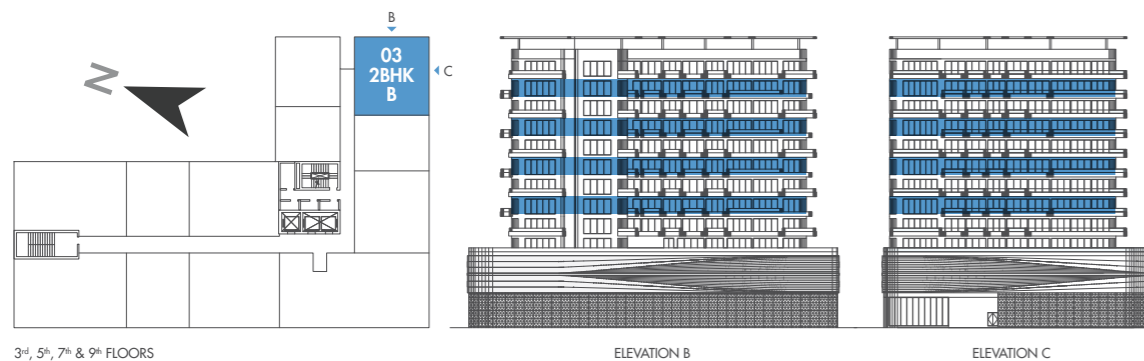
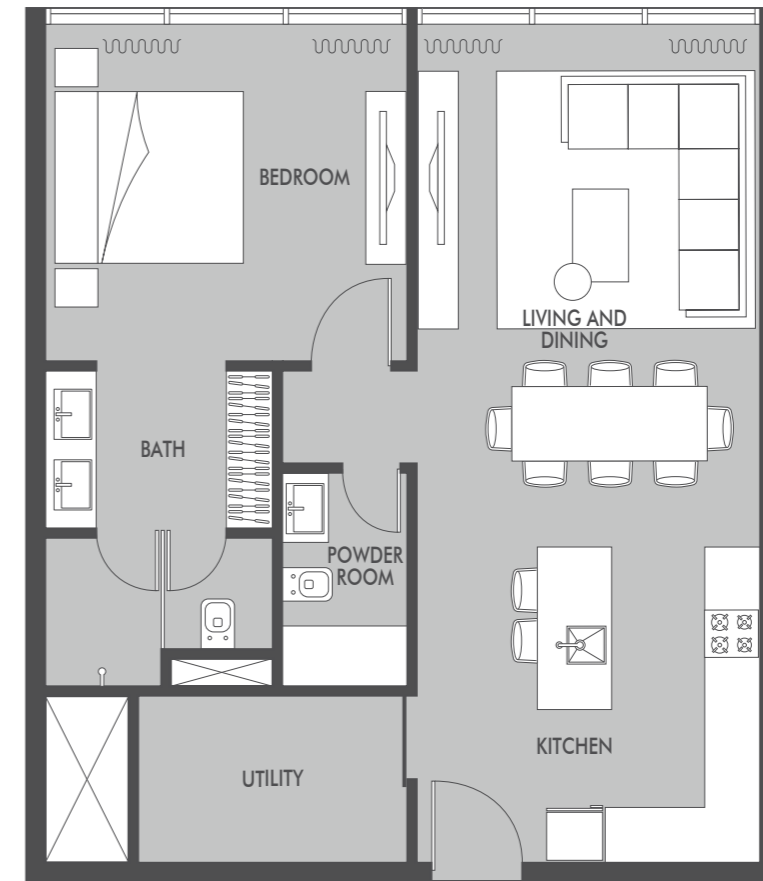
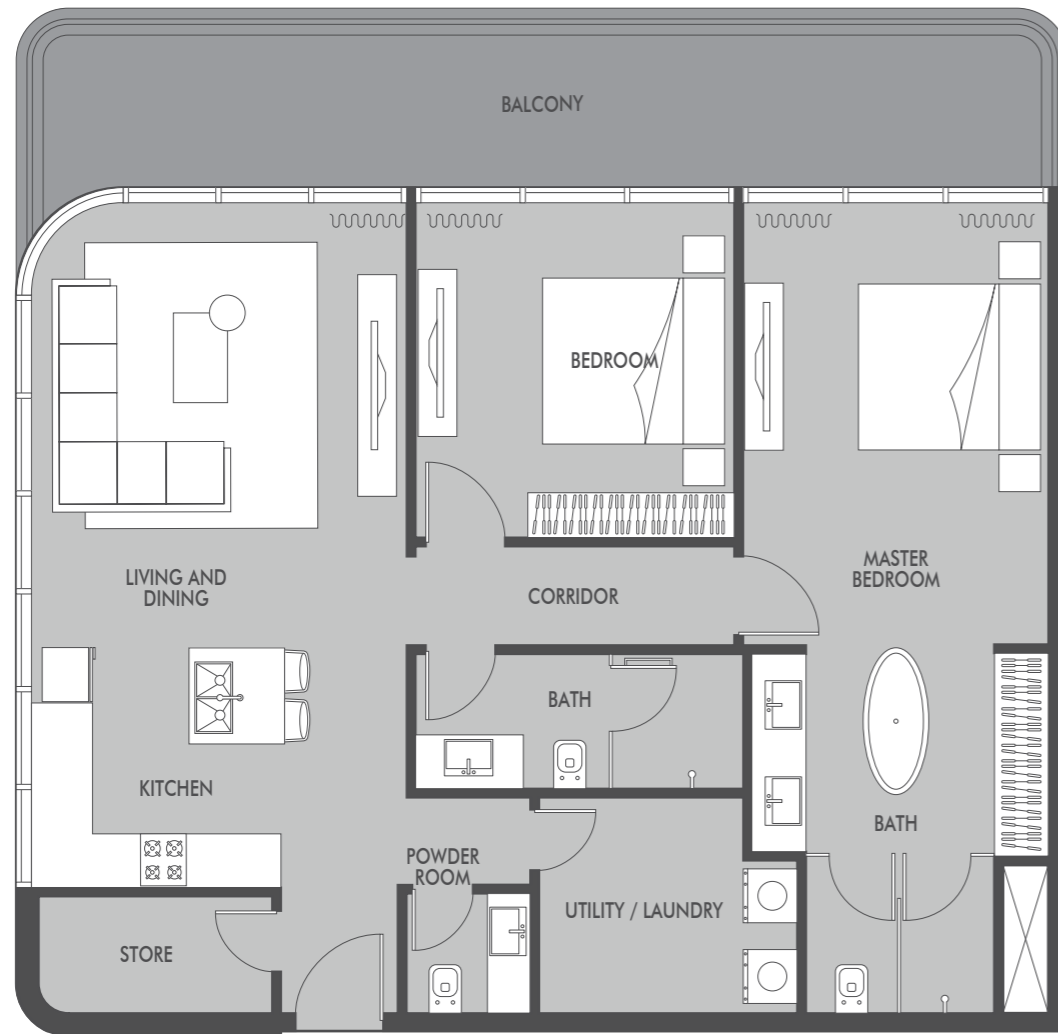
# SEASIDE

BY PRESTIGE ONE

# 1-BEDROOM

# SEASIDE

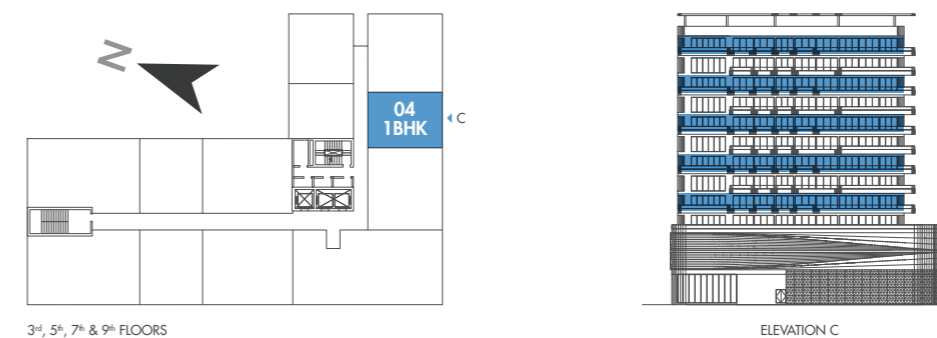
BY PRESTIGE ONE



APARTMENT AREA  
1162.00 SQ.FT.

TERRACE AREA  
258.30 SQ.FT.

TOTAL AREA  
1420.30 SQ.FT.



APARTMENT AREA  
775.00 SQ.FT.

TERRACE AREA  
(none)

TOTAL AREA  
775.00 SQ.FT.

# 2-BEDROOM TYPE B

# SEASIDE

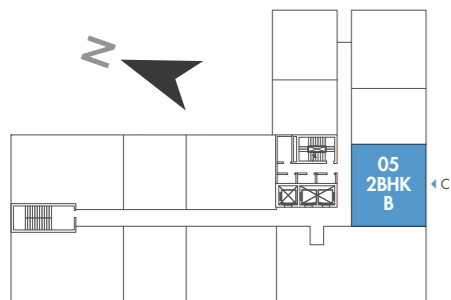
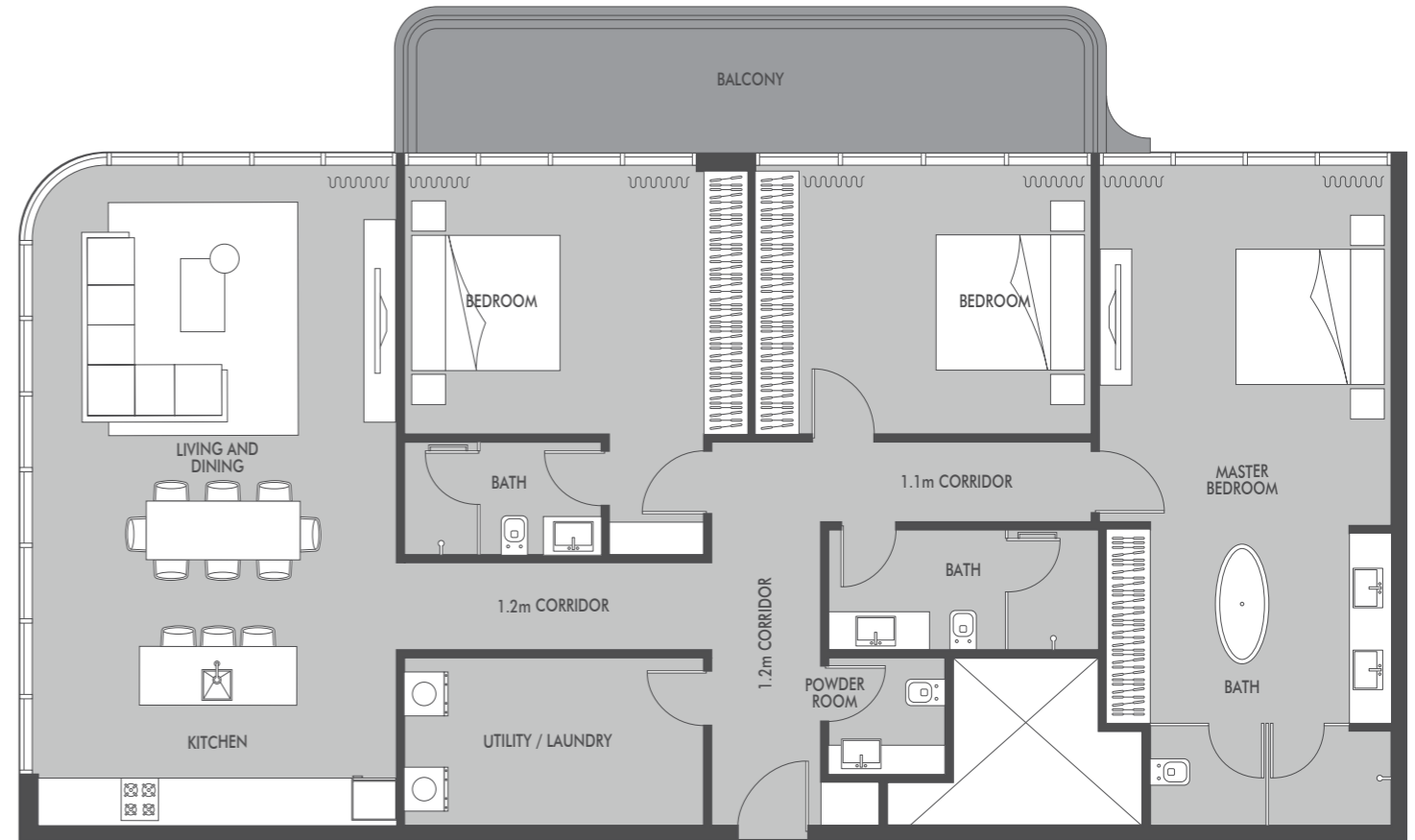
BY PRESTIGE ONE



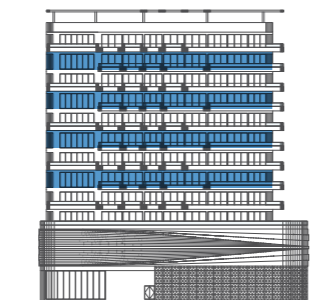
# 3-BEDROOM

# SEASIDE

BY PRESTIGE ONE



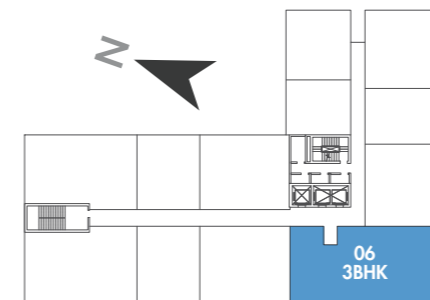
3<sup>rd</sup>, 5<sup>th</sup>, 7<sup>th</sup> & 9<sup>th</sup> FLOORS



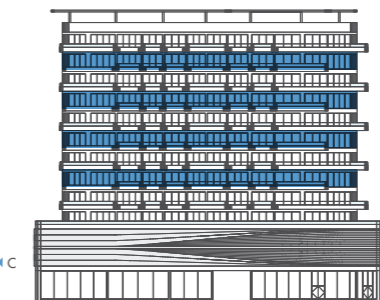
APARTMENT AREA  
1152.00 SQ.FT.

TERRACE AREA  
172.20 SQ.FT.

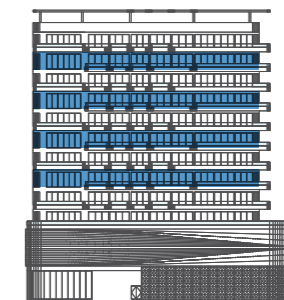
TOTAL AREA  
1324.20 SQ.FT.



2<sup>nd</sup>, 4<sup>th</sup>, 6<sup>th</sup>, 8<sup>th</sup> & 10<sup>th</sup> FLOORS



ELEVATION A



ELEVATION C

APARTMENT AREA  
1829.80 SQ.FT.

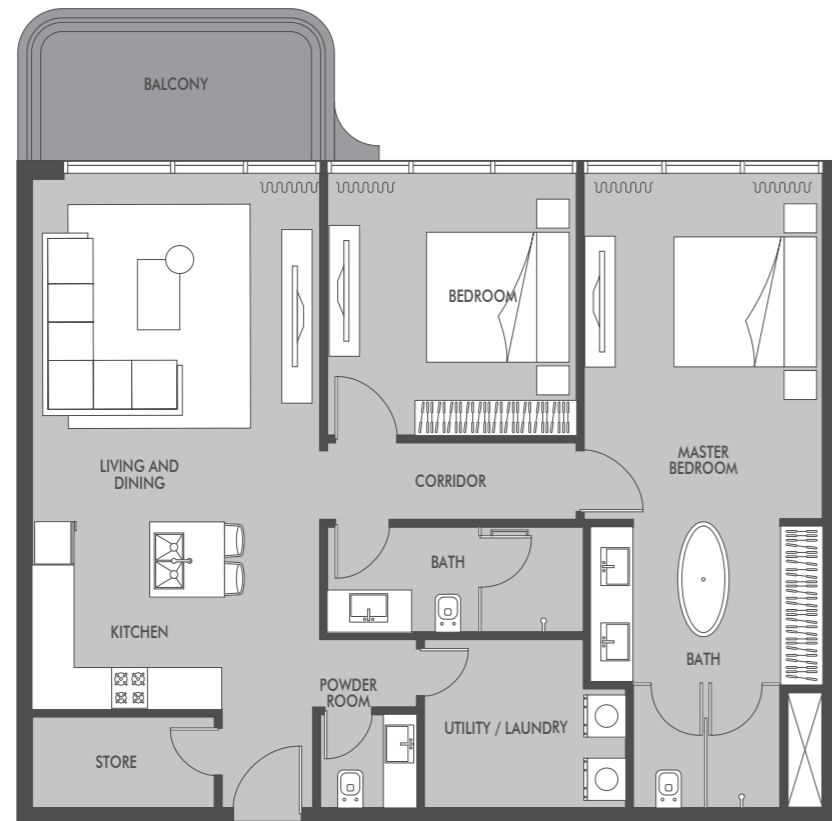
TERRACE AREA  
204.50 SQ.FT.

TOTAL AREA  
2034.30 SQ.FT.

# 2-BEDROOM TYPE B

# SEASIDE

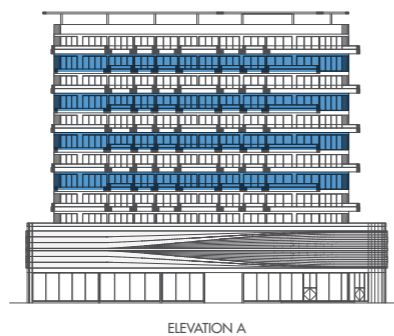
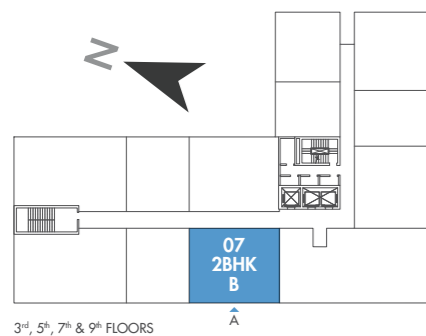
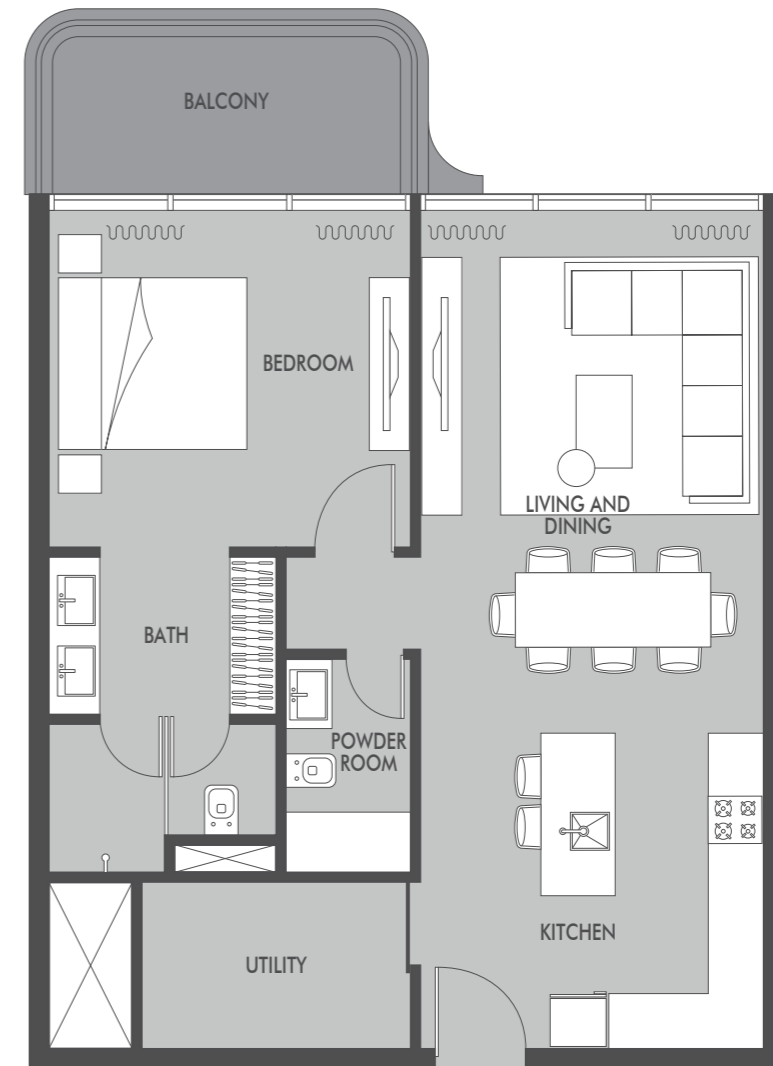
BY PRESTIGE ONE



# 1-BEDROOM

# SEASIDE

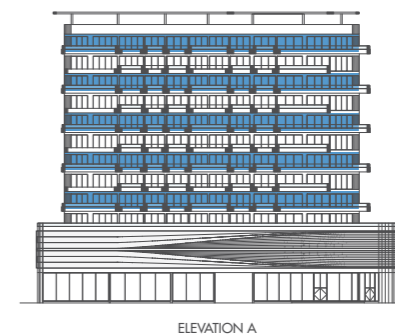
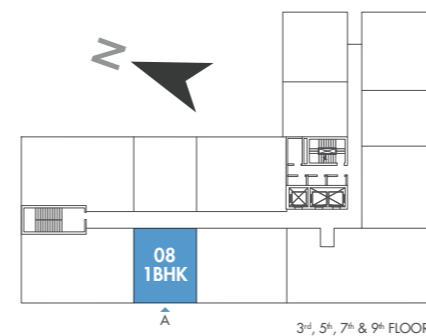
BY PRESTIGE ONE



APARTMENT AREA  
1152.00 SQ.FT.

TERRACE AREA  
96.90 SQ.FT.

TOTAL AREA  
1248.90 SQ.FT.



APARTMENT AREA  
775.00 SQ.FT.

TERRACE AREA  
96.90 SQ.FT.

TOTAL AREA  
871.90 SQ.FT.

# 2-BEDROOM TYPE A

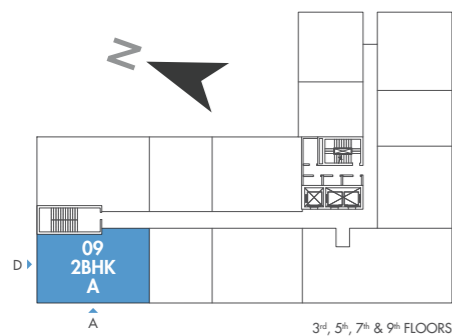
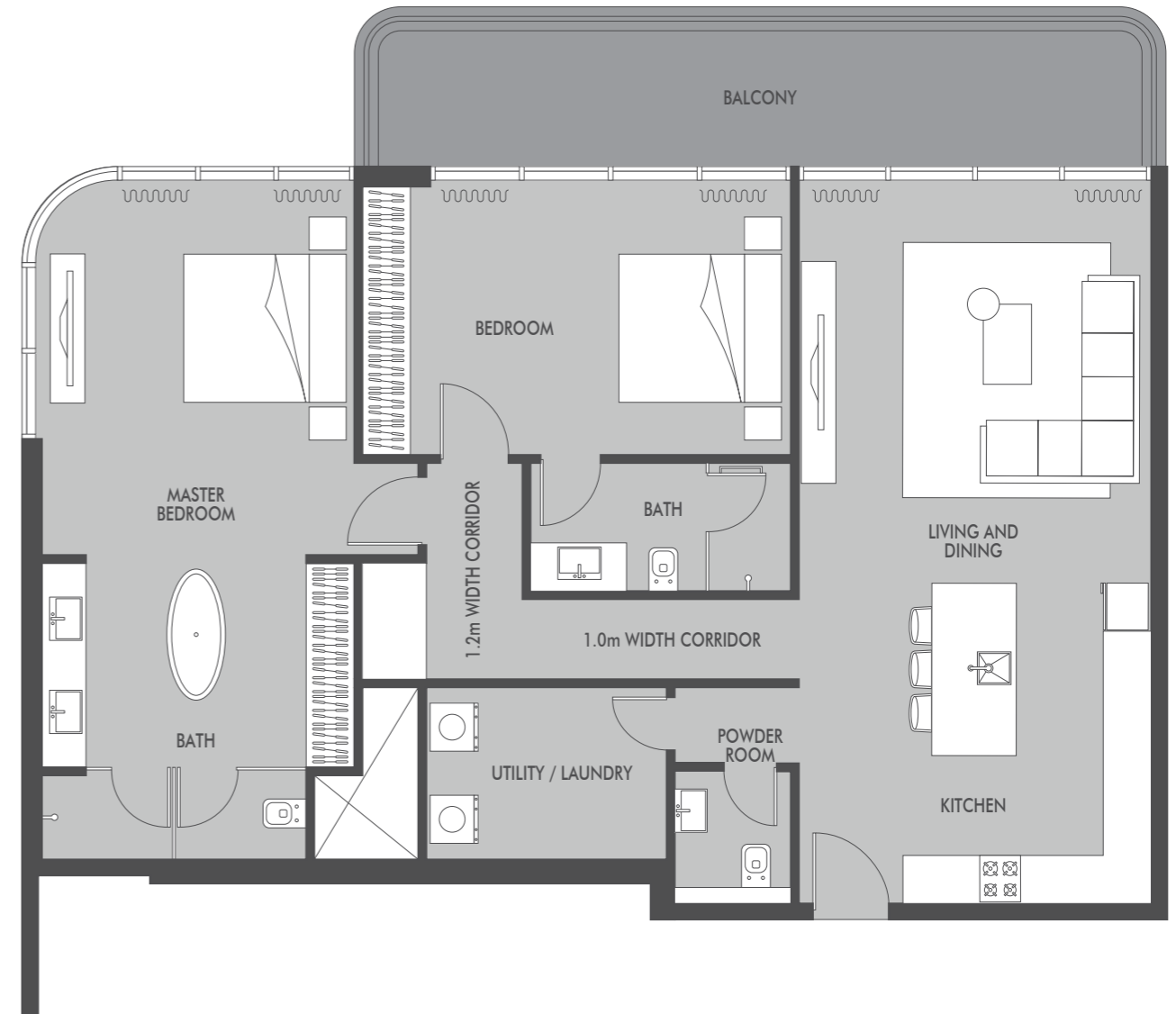
# SEASIDE

BY PRESTIGE ONE

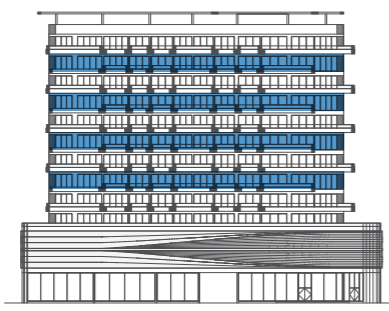
# 2-BEDROOM TYPE A

# SEASIDE

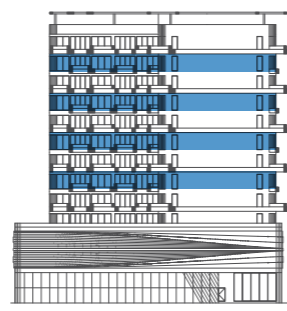
BY PRESTIGE ONE



3<sup>rd</sup>, 5<sup>th</sup>, 7<sup>th</sup> & 9<sup>th</sup> FLOORS



ELEVATION A

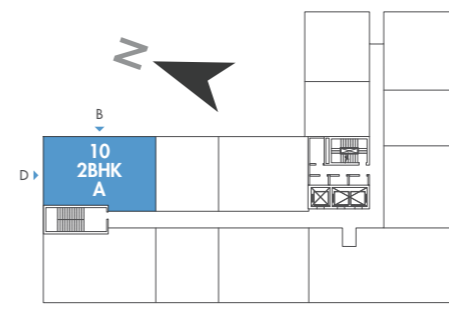


ELEVATION D

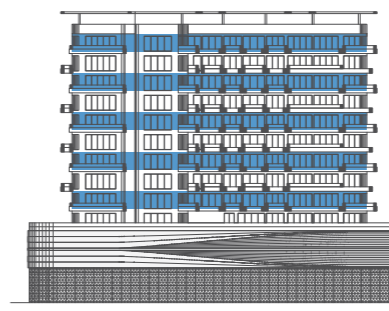
APARTMENT AREA  
1356.00 SQ.FT.

TERRACE AREA  
107.60 SQ.FT.

TOTAL AREA  
1463.60 SQ.FT.



3<sup>rd</sup>, 5<sup>th</sup>, 7<sup>th</sup> & 9<sup>th</sup> FLOORS



ELEVATION B



ELEVATION D

APARTMENT AREA  
1346.00 SQ.FT.

TERRACE AREA  
215.30 SQ.FT.

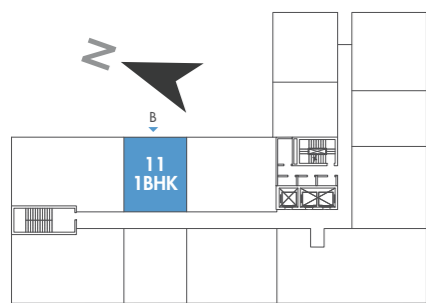
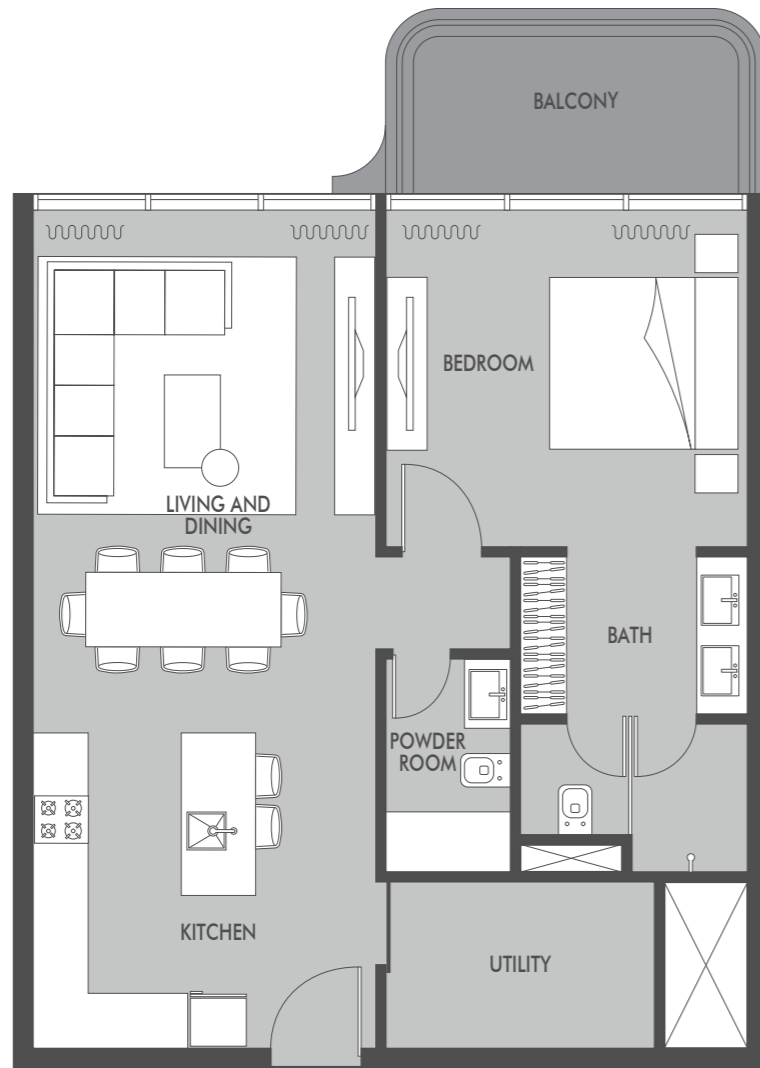
TOTAL AREA  
1561.30 SQ.FT.



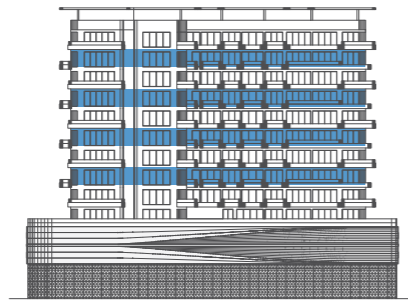
# 1-BEDROOM

# SEASIDE

BY PRESTIGE ONE



3<sup>rd</sup>, 5<sup>th</sup>, 7<sup>th</sup> & 9<sup>th</sup> FLOORS



ELEVATION B

APARTMENT AREA  
775.00 SQ.FT.

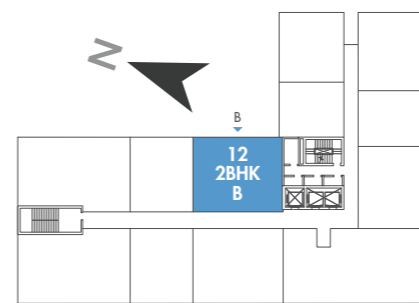
TERRACE AREA  
96.90 SQ.FT.

TOTAL AREA  
871.90 SQ.FT.

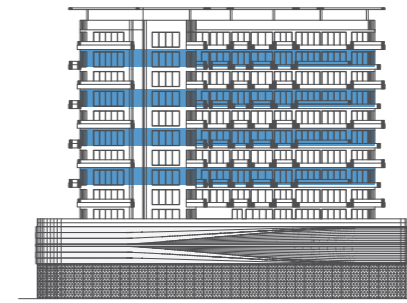
# 2-BEDROOM TYPE B

# SEASIDE

BY PRESTIGE ONE



3<sup>rd</sup>, 5<sup>th</sup>, 7<sup>th</sup> & 9<sup>th</sup> FLOORS



ELEVATION B

APARTMENT AREA  
1152.00 SQ.FT.

TERRACE AREA  
86.10 SQ.FT.

TOTAL AREA  
1238.10 SQ.FT.



## PRESTIGE ONE

Prestige One Developments brings a fresh and innovative approach to property development in Dubai.

Since 2007, Prestige has been an influential force in the city's real estate landscape - generating multi-billion dollar investments.

At the core of Prestige One Developments' philosophy lie the cardinal principles of integrity, transparency, and an unwavering dedication to exceptional service and delivery.

With a reputation built upon a foundation of trust and excellence, Prestige One Developments continues to redefine the standards of luxury living, shaping the future of urban sophistication.