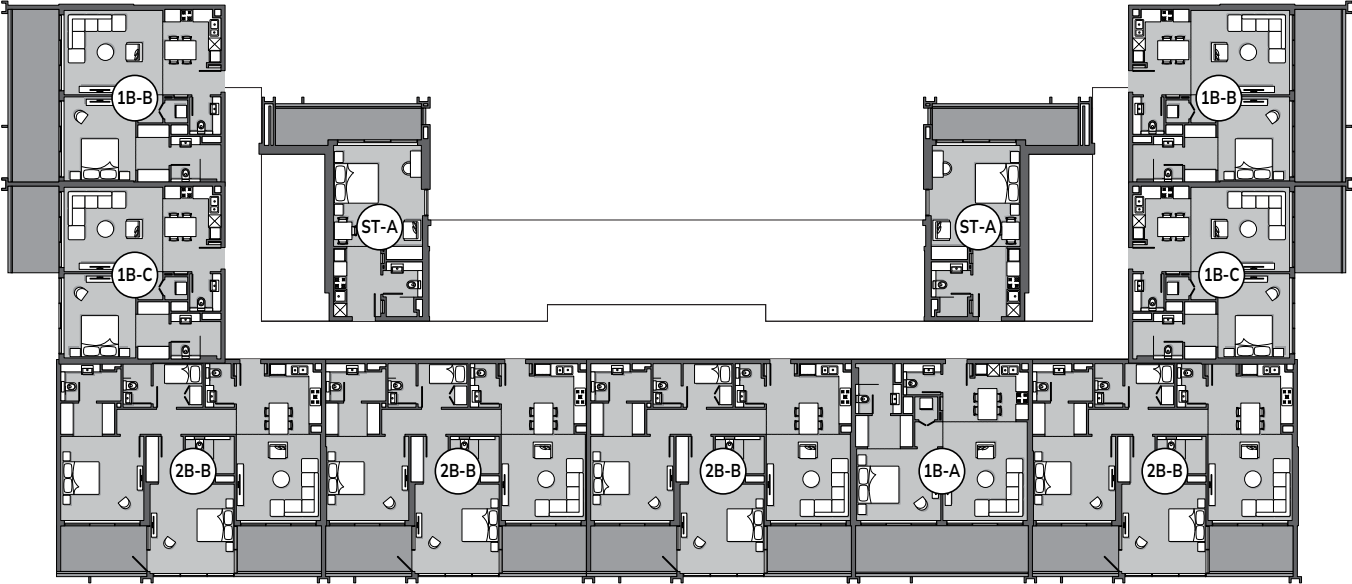


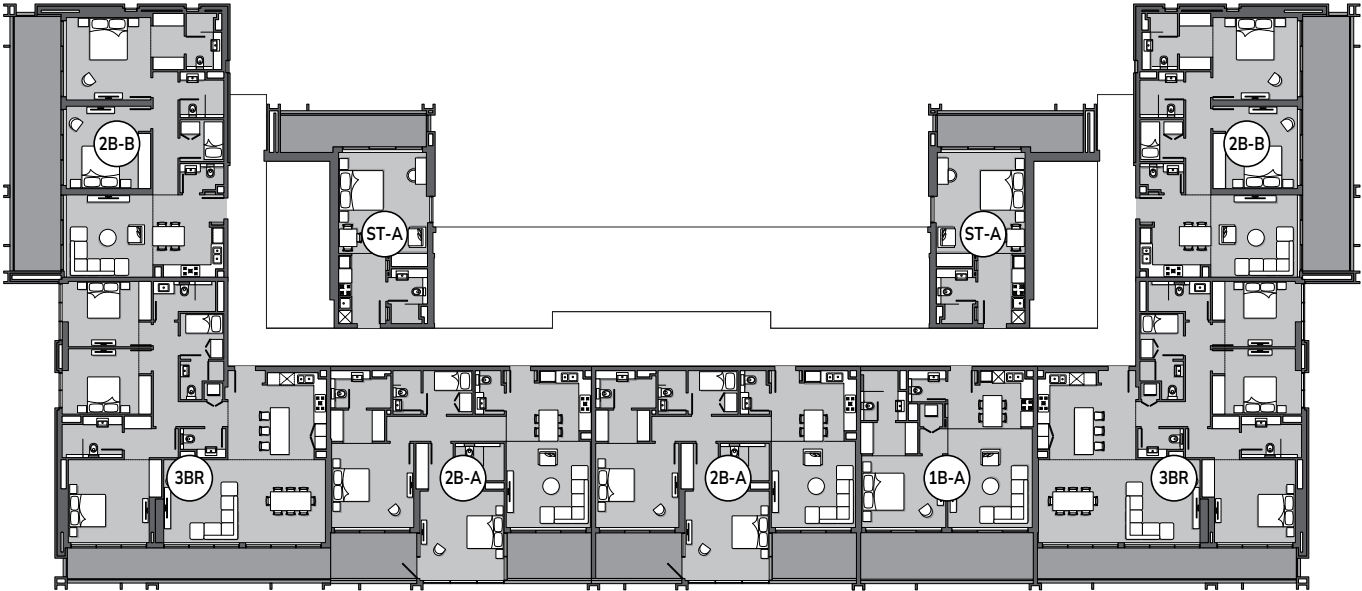
# TYPICAL FLOOR PLAN

1<sup>st</sup> to 7<sup>th</sup> floor



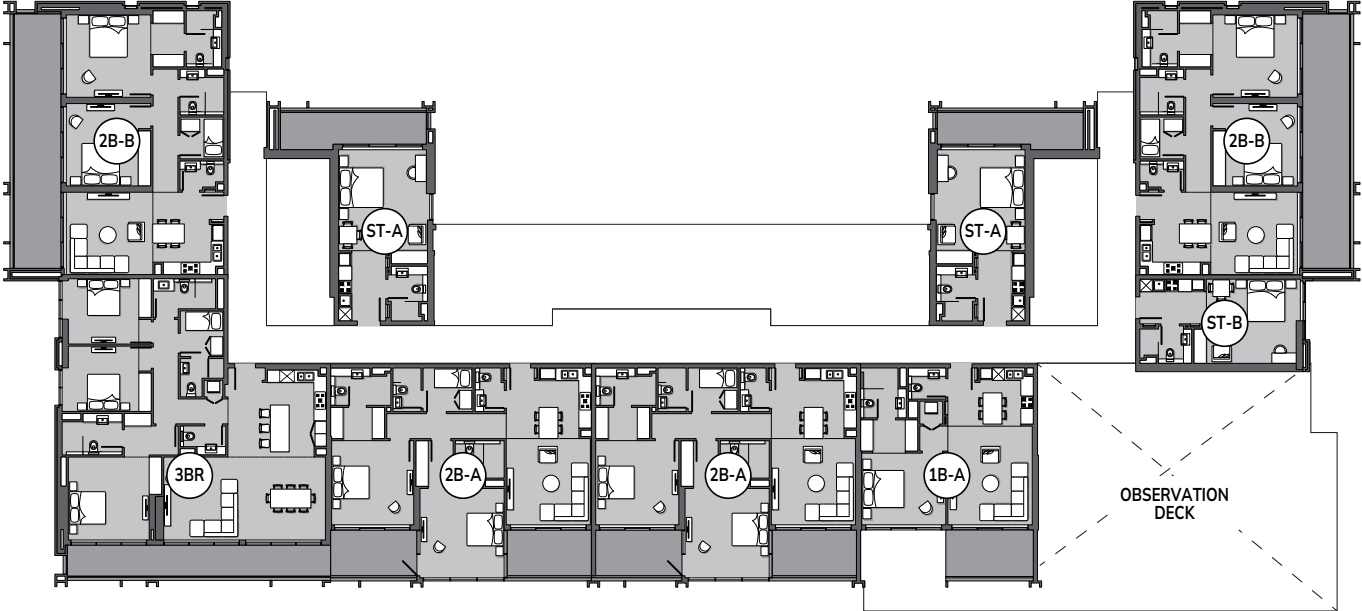
# TYPICAL FLOOR PLAN

8<sup>th</sup>, 9<sup>th</sup>, 13<sup>th</sup> & 14<sup>th</sup> floor

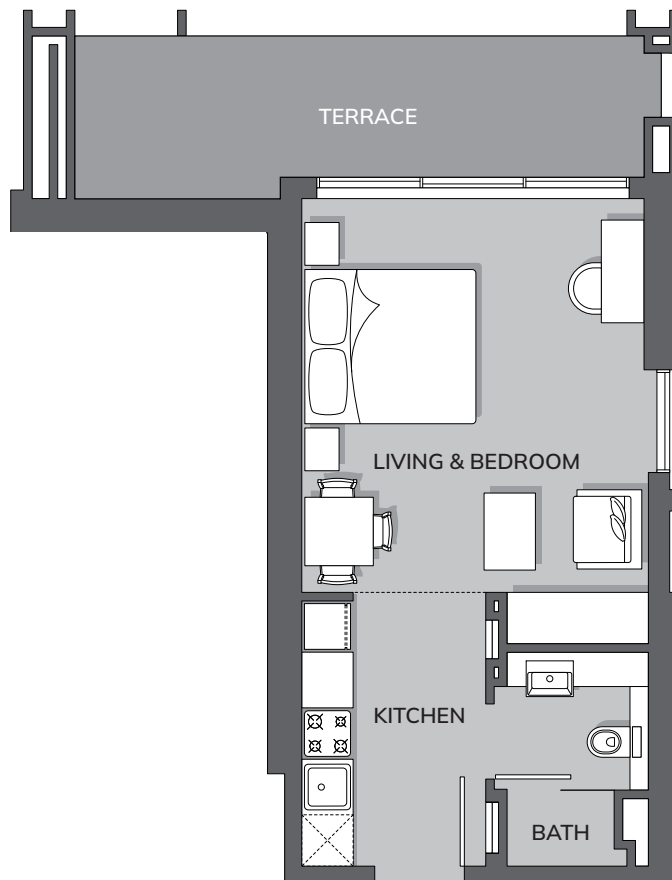


# TYPICAL FLOOR PLAN

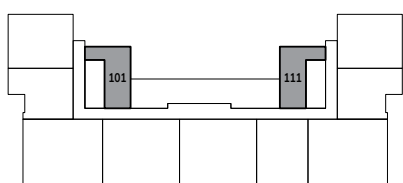
10<sup>th</sup>, 11<sup>th</sup> & 12<sup>th</sup> floor



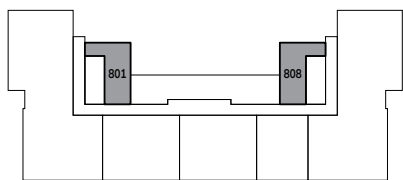
# STUDIO, TYPE A



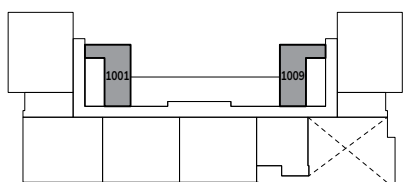
■ Internal Area   ■ External Area



(1<sup>st</sup> to 14<sup>th</sup> floor)



(8<sup>th</sup>, 9<sup>th</sup>, 13<sup>th</sup> & 14<sup>th</sup> floor)

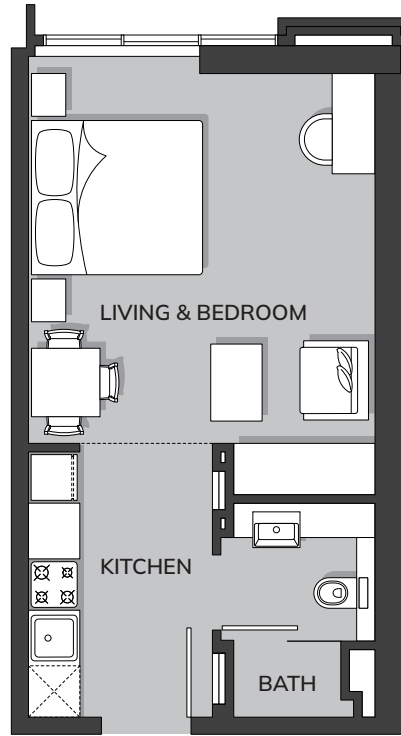


(10<sup>th</sup>, 11<sup>th</sup> & 12<sup>th</sup> floor)

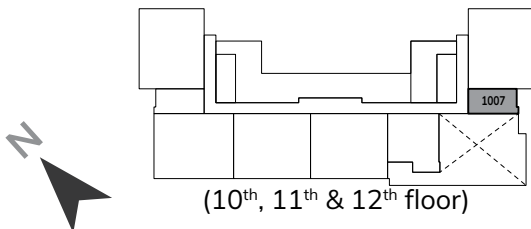
**Total Area: 45.98 m<sup>2</sup> (494.92 ft<sup>2</sup>)**



# STUDIO, TYPE B

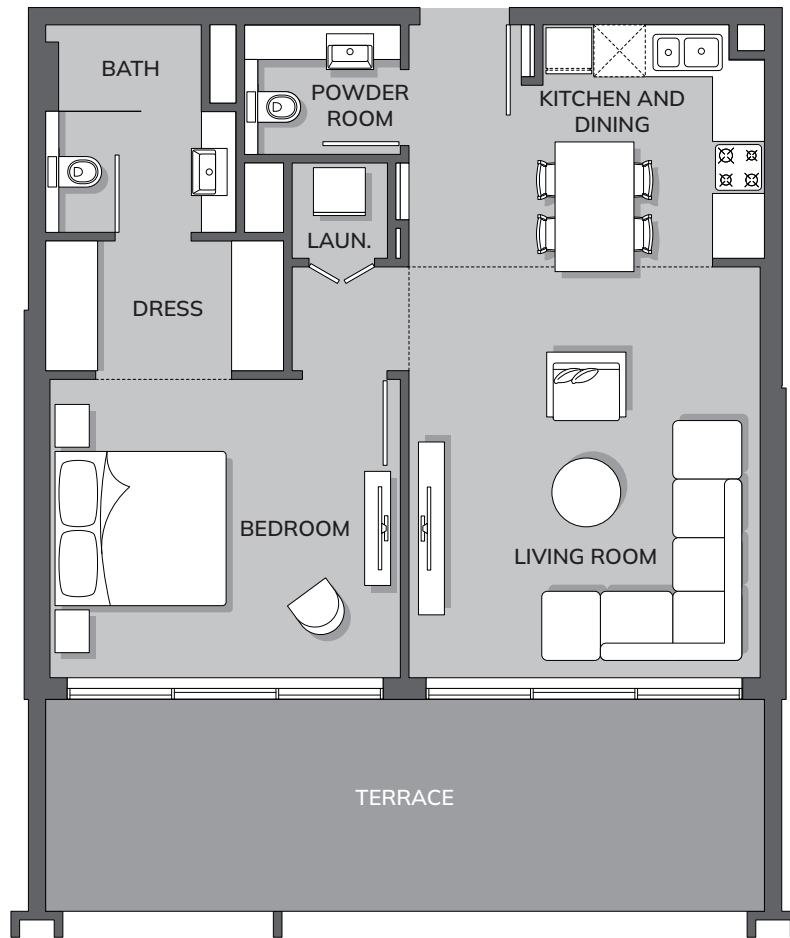


Internal Area External Area

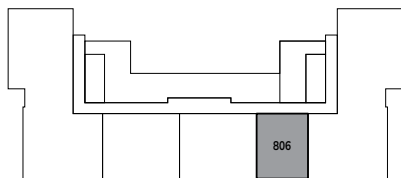


Total Area: 34.07 m<sup>2</sup> (366.7 ft<sup>2</sup>)

# 1 - BEDROOM, TYPE A



Internal Area External Area



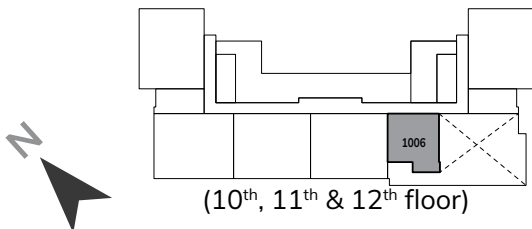
(2<sup>nd</sup> to 9<sup>th</sup>, 13<sup>th</sup> & 14<sup>th</sup> floor)

Total Area: 85.37 m<sup>2</sup> (918.92 ft<sup>2</sup>)

# 1 - BEDROOM, TYPE A 1006

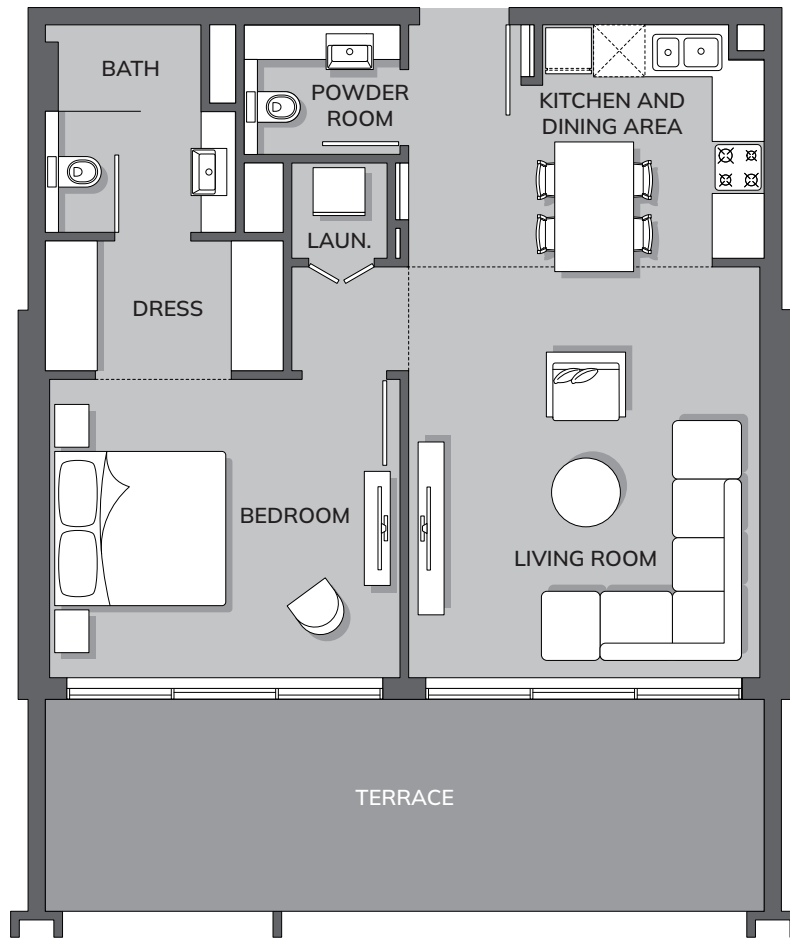


■ Internal Area    ■ External Area

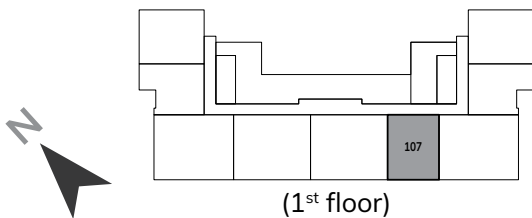


Total Area: 75.41 m<sup>2</sup> (811.71 ft<sup>2</sup>)

# 1 - BEDROOM, TYPE A 107



■ Internal Area    ■ External Area

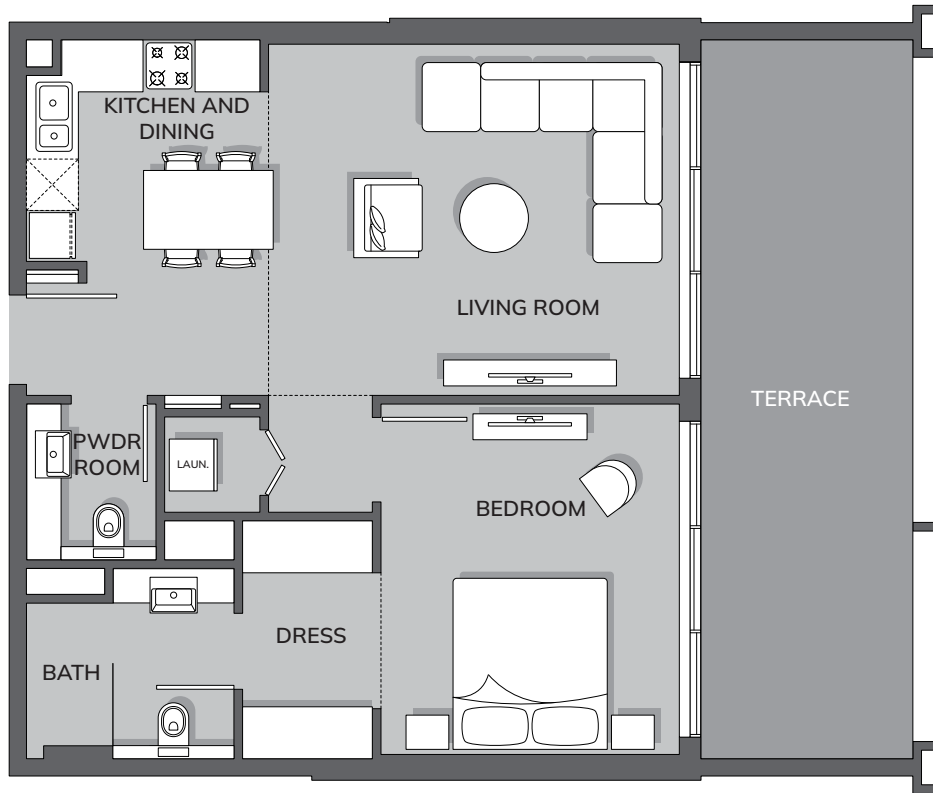


**Total Area: 98.98 m<sup>2</sup> (1065.21 ft<sup>2</sup>)**

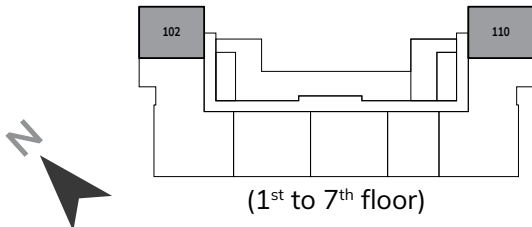
All drawings and dimensions are approximate. Drawings are not to scale and are subject to change without notice. The developer reserves the right to make revisions. The units are measured at typical floor in the building and columns may vary in size depending on the floor level. The furnishings and accessories shown are for representation only. The length and width of the Unit and balcony varies depending on which floor and which orientation the unit is located within the building to comply with the building authority regulations. Apartment unit sizes may vary. Actual unit sizes will be reflected on the Sales and Purchase Agreement.



# 1 - BEDROOM, TYPE B 110

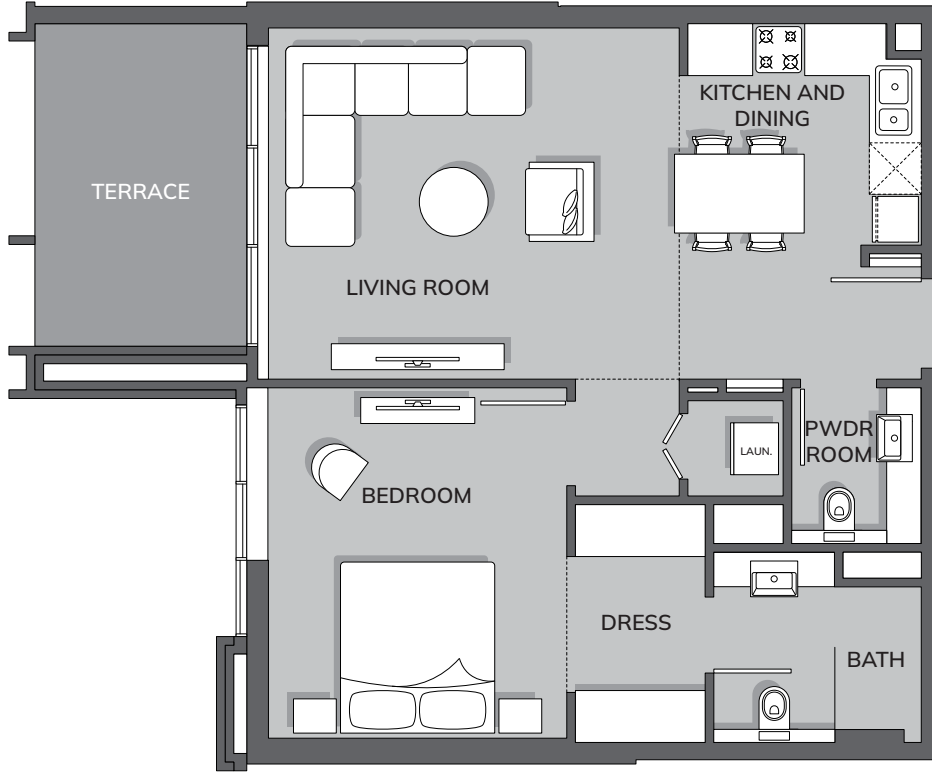


■ Internal Area    ■ External Area

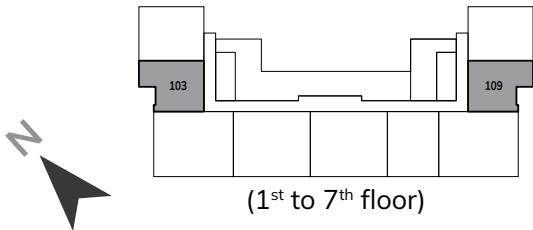


Total Area: 85.37 m<sup>2</sup> (918.92 ft<sup>2</sup>)

# 1 - BEDROOM, TYPE C 103



■ Internal Area    ■ External Area



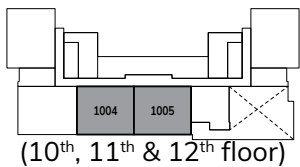
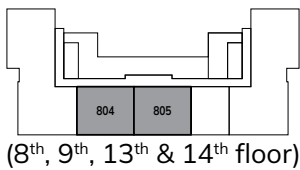
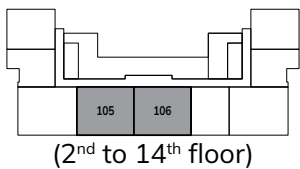
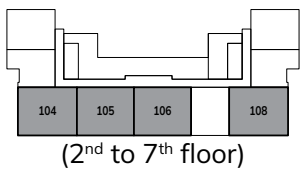
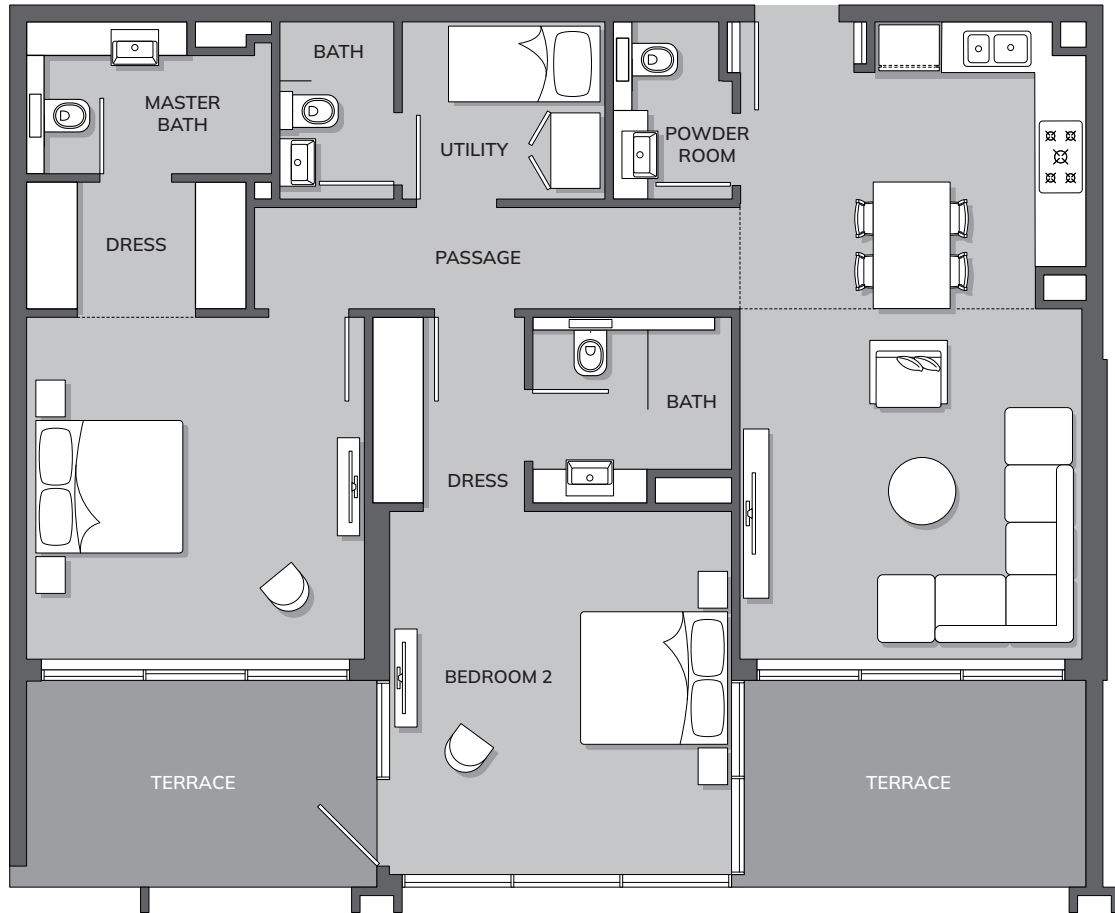
**Total Area: 75.41 m<sup>2</sup> (811.71 ft<sup>2</sup>)**

All drawings and dimensions are approximate. Drawings are not to scale and are subject to change without notice. The developer reserves the right to make revisions. The units are measured at typical floor in the building and columns may vary in size depending on the floor level. The furnishings and accessories shown are for representation only. The length and width of the Unit and balcony varies depending on which floor and which orientation the unit is located within the building to comply with the building authority regulations. Apartment unit sizes may vary. Actual unit sizes will be reflected on the Sales and Purchase Agreement.

# 2 - BEDROOM, TYPE A



VISTA  
BY PRESTIGE ONE  
DEVELOPMENTS

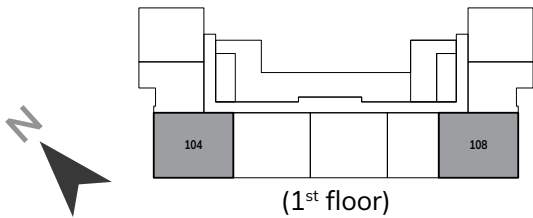


Internal Area External Area

Total Area: 129.08 m<sup>2</sup> (1,389.42 ft<sup>2</sup>)

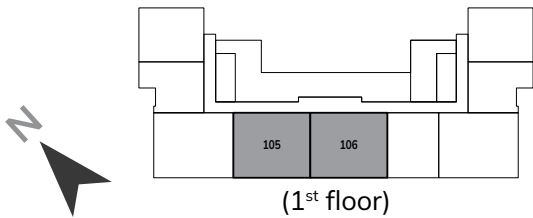
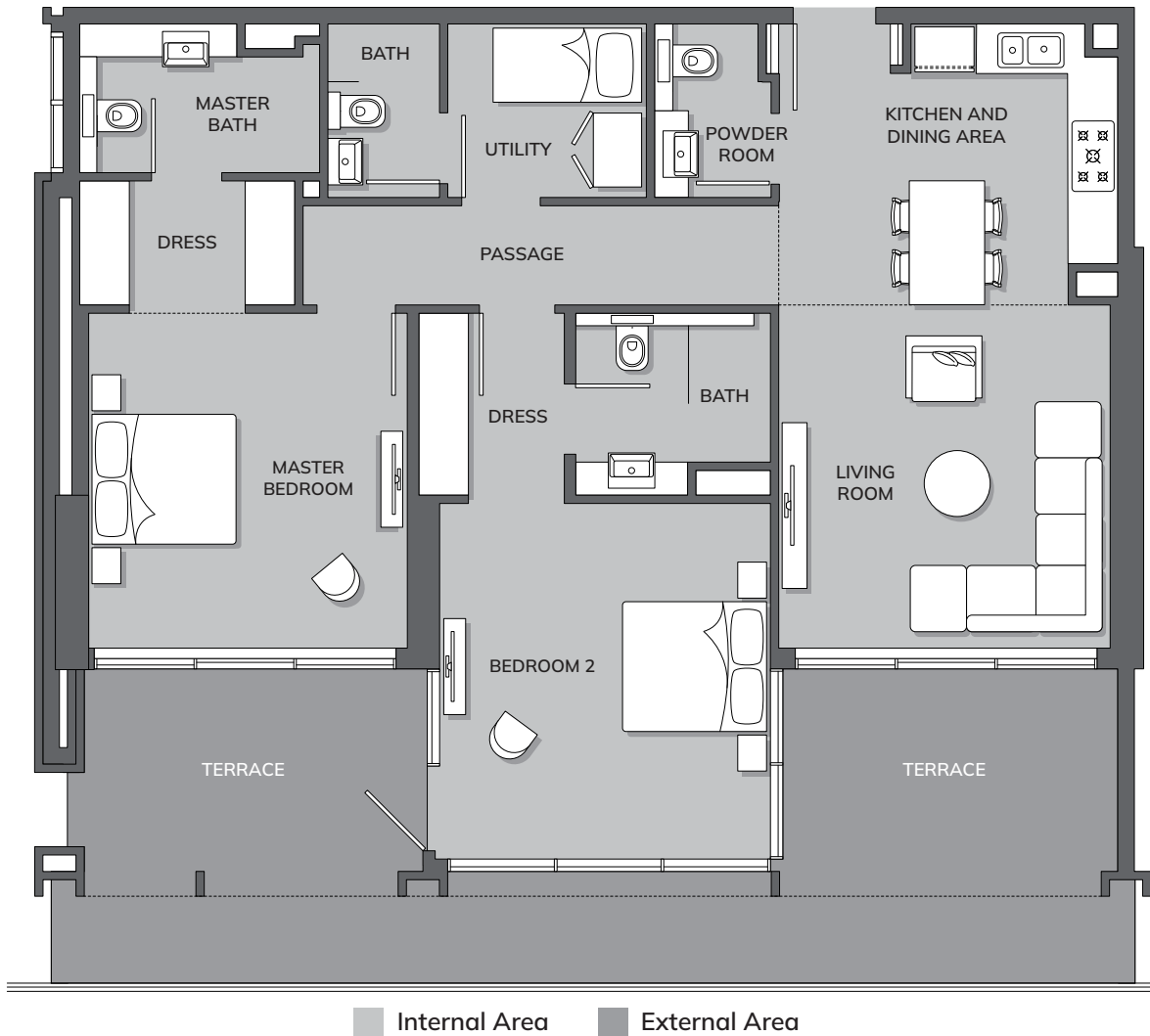


# 2 - BEDROOM, TYPE A 104



**Total Area: 149.84 m<sup>2</sup> (1612.88 ft<sup>2</sup>)**

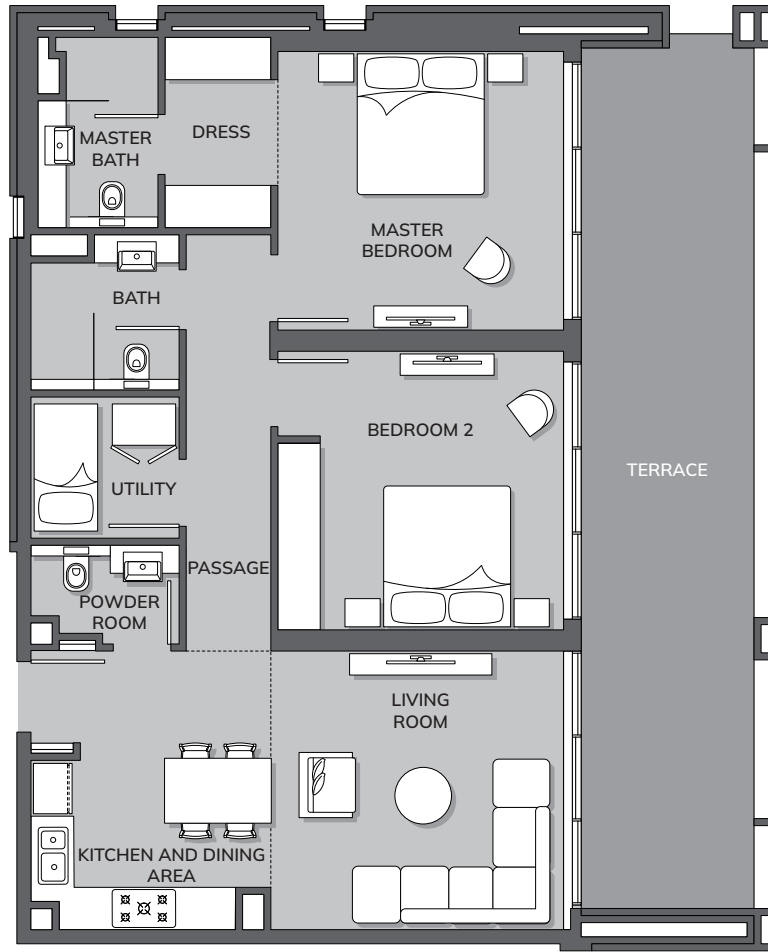
# 2 - BEDROOM, TYPE A 105



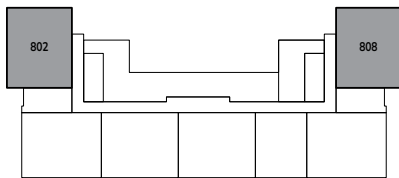
**Total Area: 148.69 m<sup>2</sup> (1600.50 ft<sup>2</sup>)**

All drawings and dimensions are approximate. Drawings are not to scale and are subject to change without notice. The developer reserves the right to make revisions. The units are measured at typical floor in the building and columns may vary in size depending on the floor level. The furnishings and accessories shown are for representation only. The length and width of the Unit and balcony varies depending on which floor and which orientation the unit is located within the building to comply with the building authority regulations. Apartment unit sizes may vary. Actual unit sizes will be reflected on the Sales and Purchase Agreement.

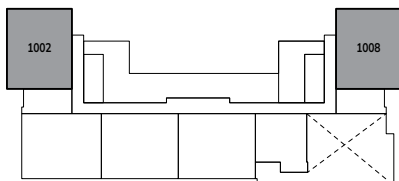
# 2 - BEDROOM, TYPE B



■ Internal Area    ■ External Area



(8<sup>th</sup>, 9<sup>th</sup>, 13<sup>th</sup> & 14<sup>th</sup> floor)



(10<sup>th</sup>, 11<sup>th</sup> & 12<sup>th</sup> floor)

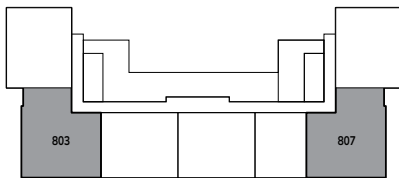


**Total Area: 121.48 m<sup>2</sup> (1,382.21 ft<sup>2</sup>)**

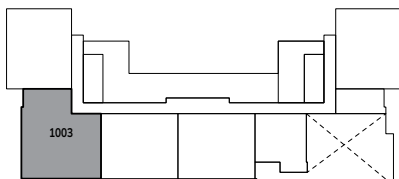
# 3 - B E D R O O M



■ Internal Area    ■ External Area



(8<sup>th</sup>, 9<sup>th</sup>, 13<sup>th</sup> & 14<sup>th</sup> floor)



(10<sup>th</sup>, 11<sup>th</sup> & 12<sup>th</sup> floor)



**Total Area: 163.22 m<sup>2</sup> (1,756.90 ft<sup>2</sup>)**

All drawings and dimensions are approximate. Drawings are not to scale and are subject to change without notice. The developer reserves the right to make revisions. The units are measured at typical floor in the building and columns may vary in size depending on the floor level. The furnishings and accessories shown are for representation only. The length and width of the Unit and balcony varies depending on which floor and which orientation the unit is located within the building to comply with the building authority regulations. Apartment unit sizes may vary. Actual unit sizes will be reflected on the Sales and Purchase Agreement.