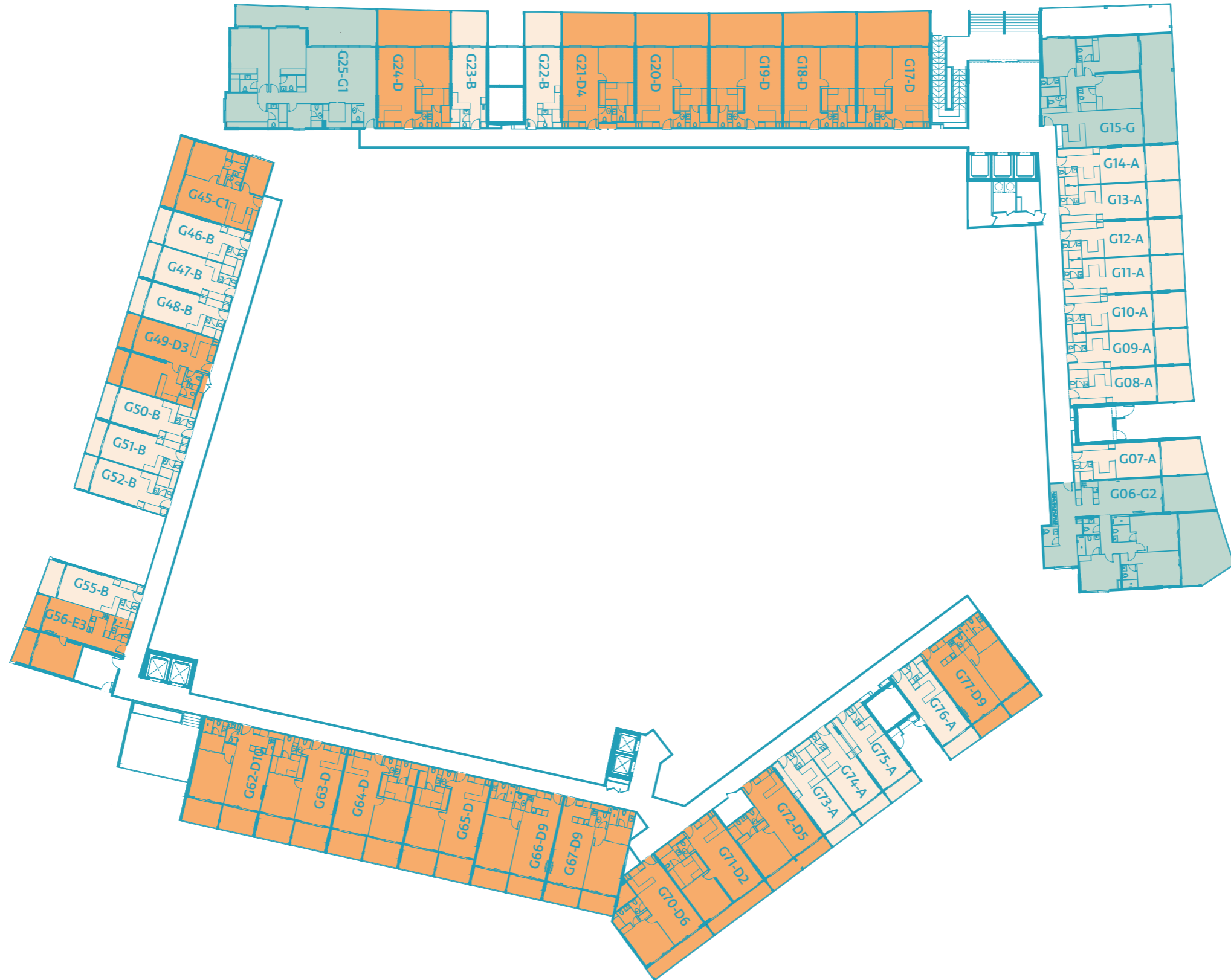
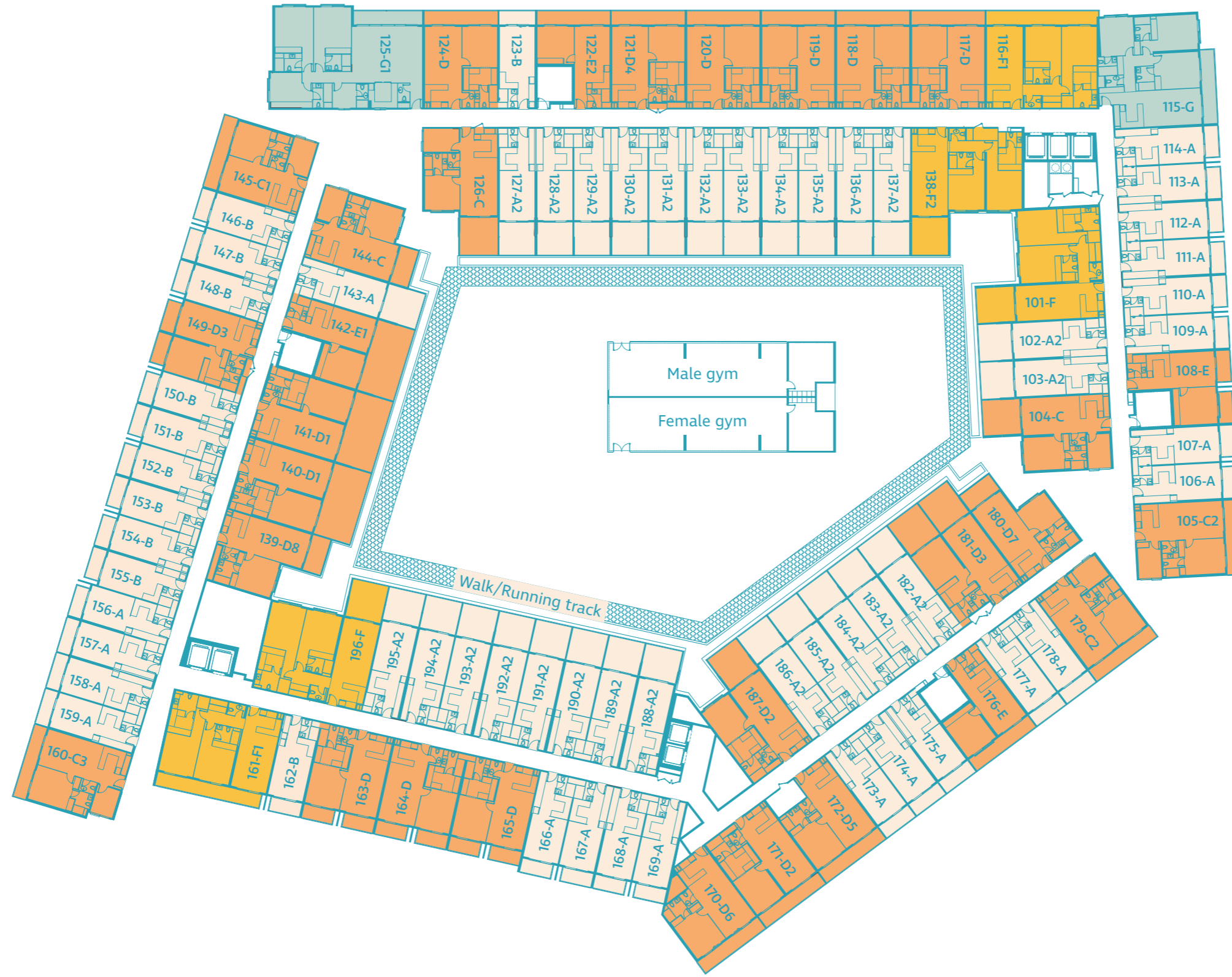


ground floor



- STUDIO APARTMENT
- ONE BEDROOM APARTMENT
- THREE BEDROOM APARTMENT

first floor



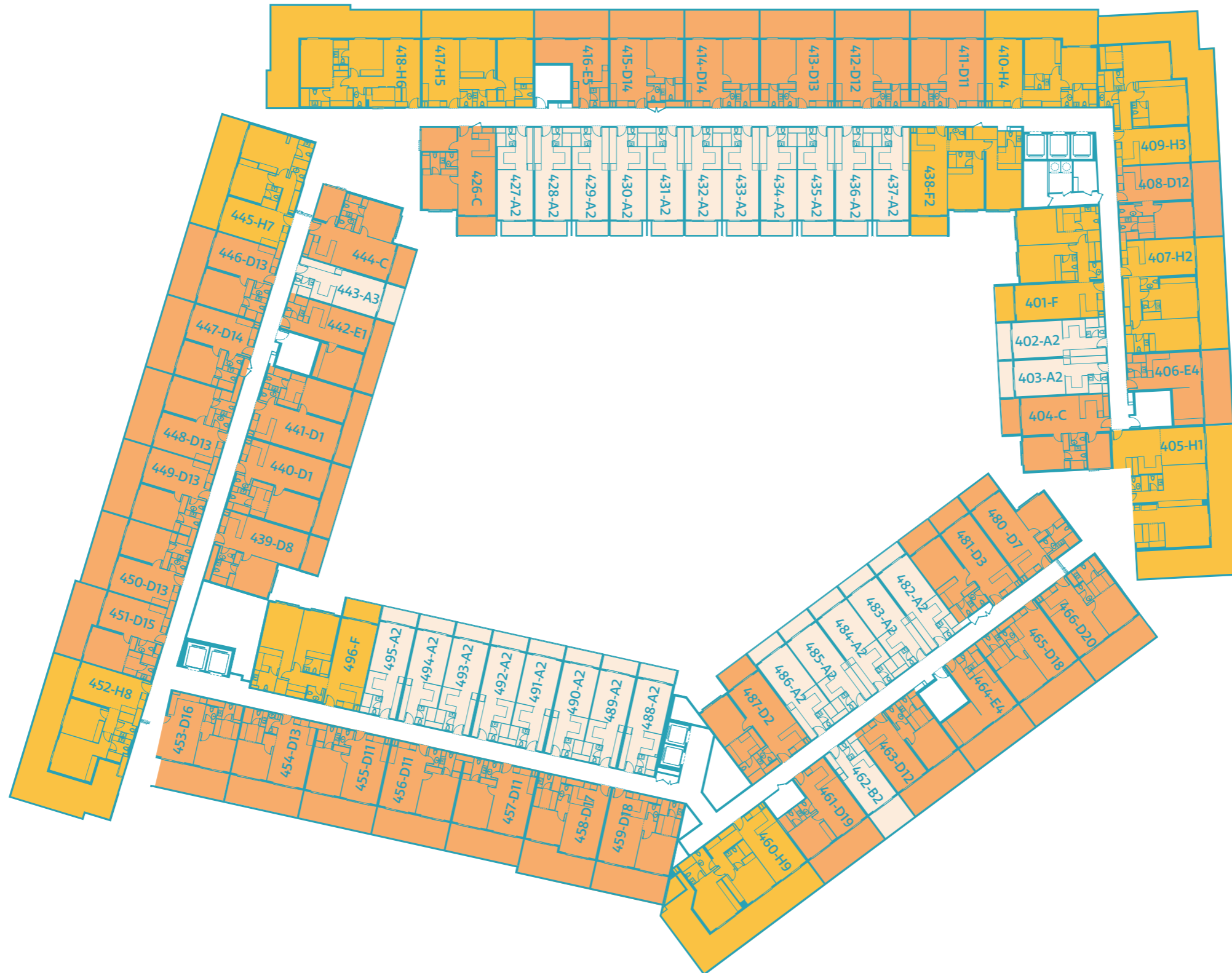
- STUDIO APARTMENT
- ONE BEDROOM APARTMENT
- TWO BEDROOM APARTMENT
- THREE BEDROOM APARTMENT




typical residential floor
(second floor to third floor)



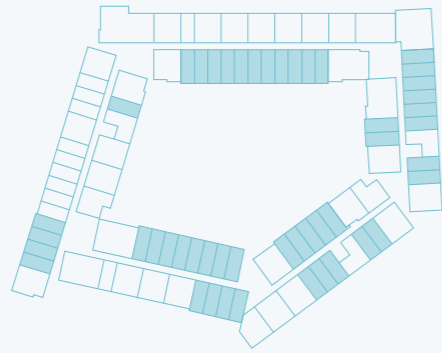
- STUDIO APARTMENT
- ONE BEDROOM APARTMENT
- TWO BEDROOM APARTMENT
- THREE BEDROOM APARTMENT

fourth floor



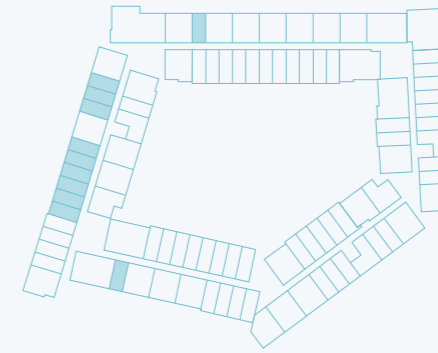
| | |
|---|-----------------------|
|  | STUDIO APARTMENT |
|  | ONE BEDROOM APARTMENT |
|  | TWO BEDROOM APARTMENT |

Studio Apartment TYPE A

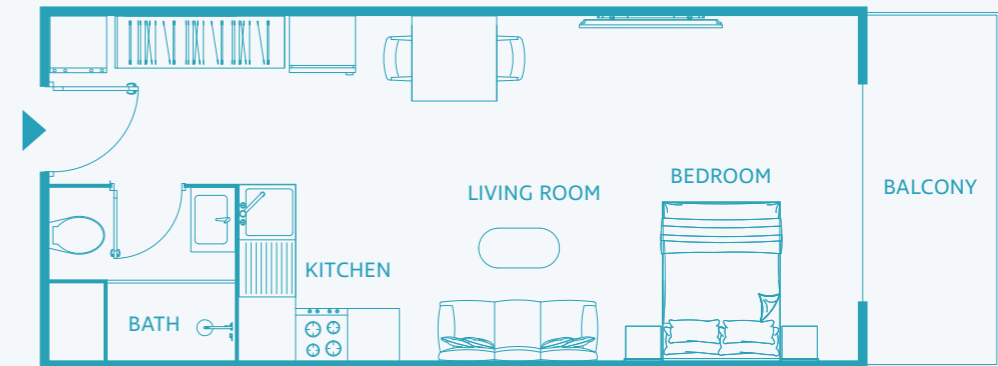
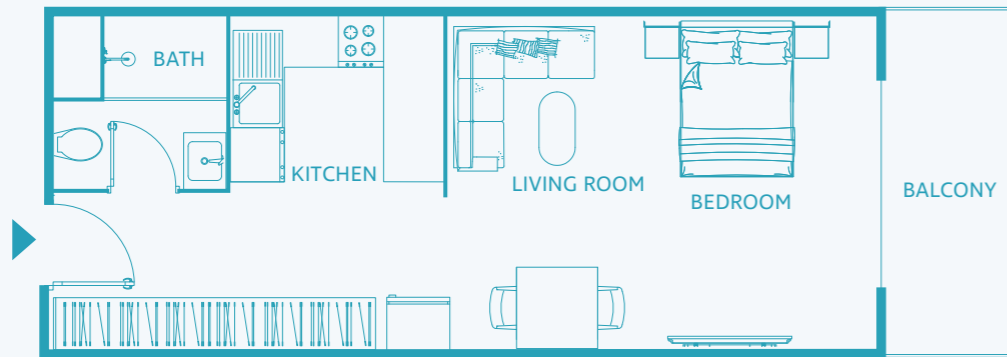


UNIT SIZE: from 436 to 577 SQFT

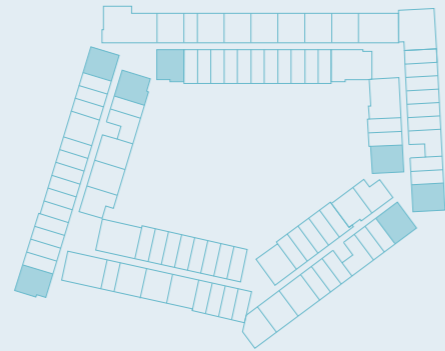
Studio Apartment TYPE B



UNIT SIZE: from 414 to 713 SQFT

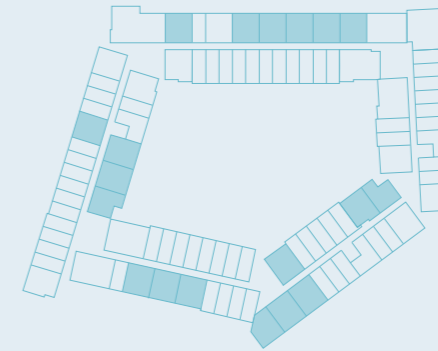


One Bedroom Apartment TYPE C

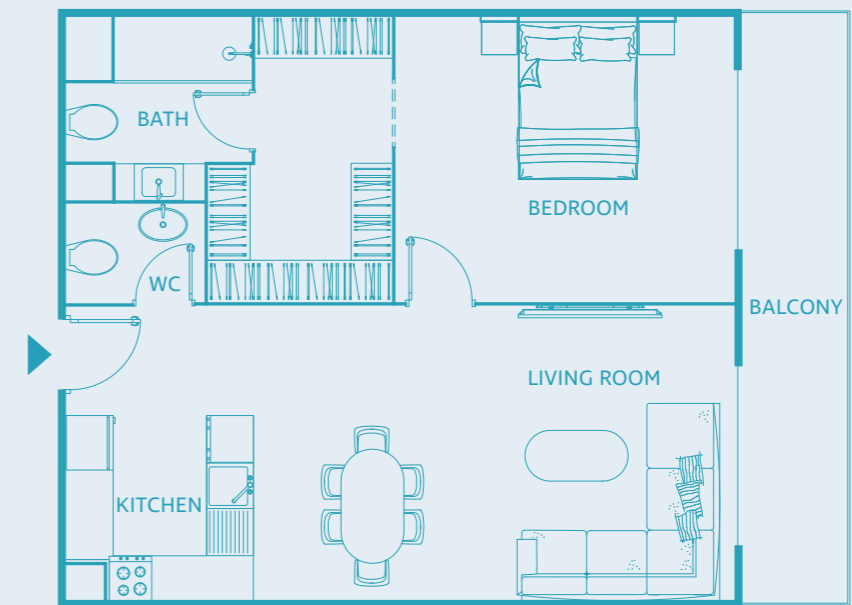
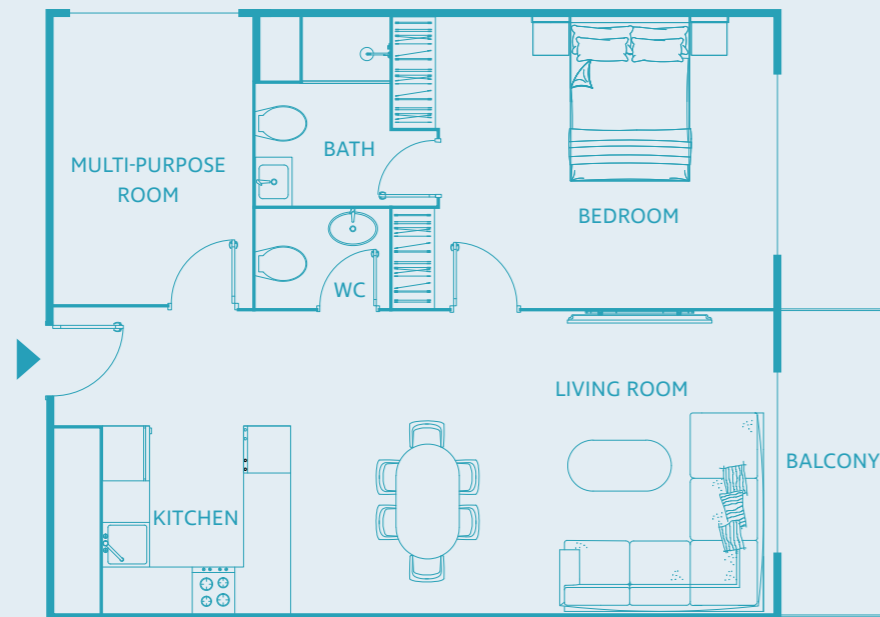


UNIT SIZE: from 827 to 926 SQFT

One Bedroom Apartment TYPE D

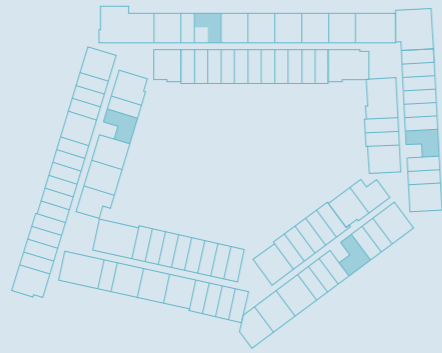


UNIT SIZE: from 727 to 1102 SQFT

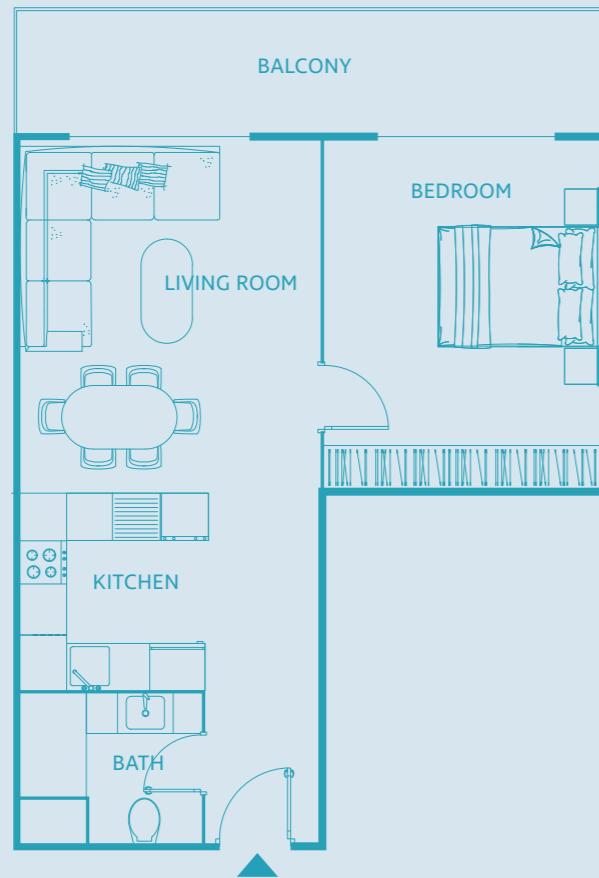


One Bedroom Apartment

TYPE E

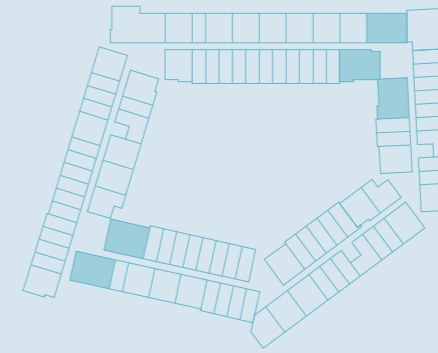


UNIT SIZE: from 662 to 920 SQFT



Two Bedroom Apartment

TYPE F

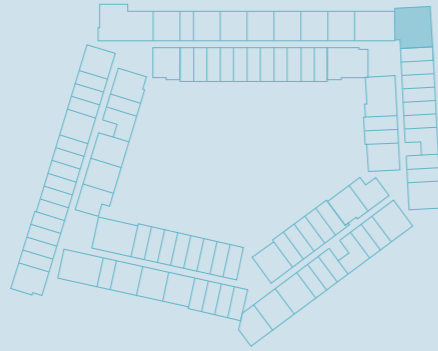


UNIT SIZE: from 1138 to 1309 SQFT

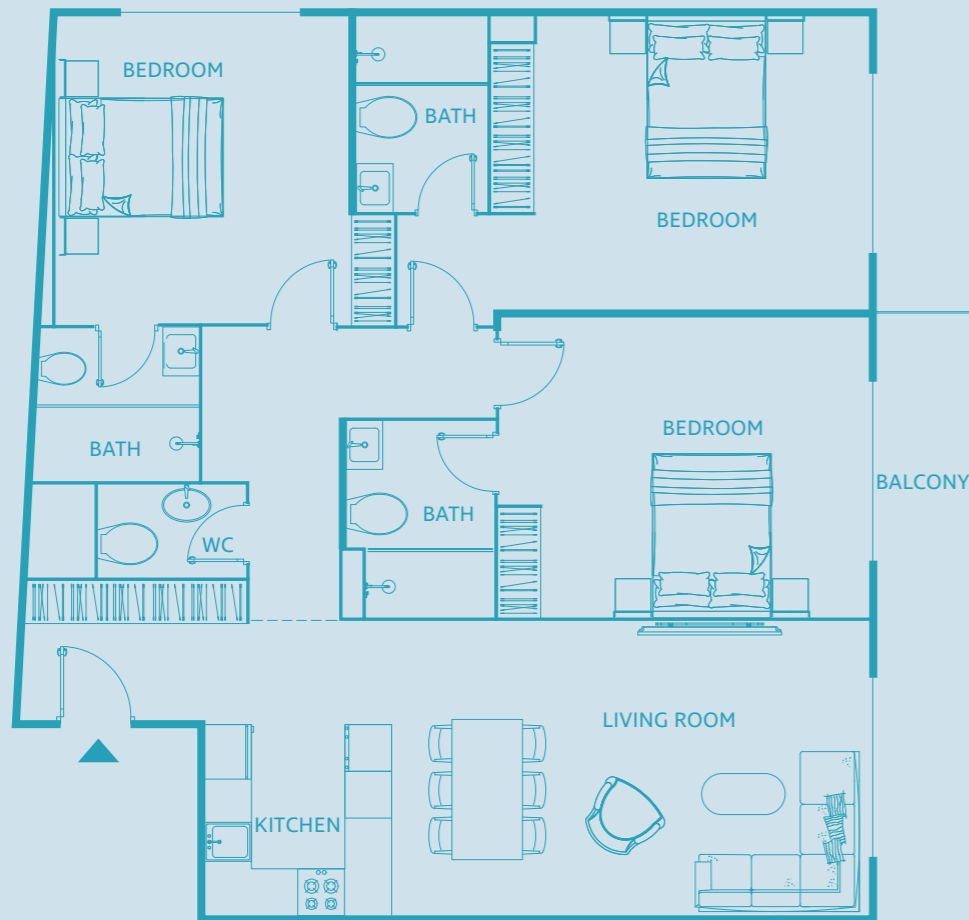


Three Bedroom Apartment

TYPE G

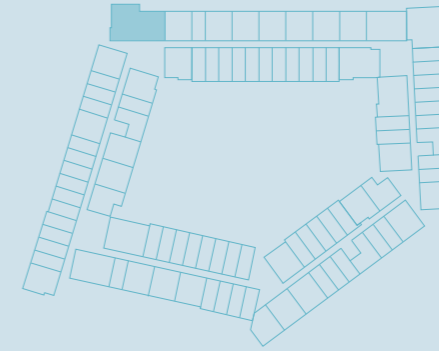


UNIT SIZE: from 1399 to 1715 SQFT



Three Bedroom Apartment

TYPE G1



UNIT SIZE: from 1756 to 2145 SQFT

