

AMALI

VILLA
Amaya

IN A WORLD OF EXCESS, WE CONJURE

sophistication

IN A TIME OF CHAOS, WE CELEBRATE

harmony

IN A REALM OF DESIRE, WE ARE THE

hope



VILLA
Amaya

IN OUR HANDS, LUXURY BECOMES CLAY,
MOLDED, BENT AND GIVEN NEW PURPOSE.
FASHIONED TO FIT YOU LIKE A GLOVE.

AMAYA AT A GLANCE

14,686 SQ FT

PLOT

5

BEDROOMS

14,573 SQ FT

BUA

5

ENSUITE BATHROOMS

DESIGN

B8
ARCHITECTURE

FROND M, PALM JUMEIRAH

PRICE ON REQUEST

PAYMENT PLAN

30%

ON BOOKING

30%

DURING CONSTRUCTION

40%

ON HANDOVER
JUNE 2024

GROUND FLOOR

FORMAL LIVING ROOM

FORMAL DINING ROOM

SHOW KITCHEN

BAR WITH OPEN DINING SPACE &

FAMILY LIVING

OFFICE

HOME CINEMA

GUEST BEDROOM + ENSUITE BATHROOM

GRAND FOYER

PANORAMIC LIFT

POWDER ROOM

CLOSED PARKING FOR TWO CARS

STAFF AREA:

DIRTY KITCHEN / LAUNDRY / BOH / 2 SEPARATE STAFF
BEDROOMS + ENSUITE BATHROOMS

OUTDOORS:

BARBECUE / OUTDOOR LIVING & / DECKING SUNBED
AREAS / INFINITY POOL / HOT TUB / CHILLOUT DECK
/ POOL SHOWER / PONDS & WATER FEATURES

FIRST FLOOR

PRIMARY BEDROOM (ENSUITE BATHROOM)

PRIMARY BEDROOM WALK-IN CLOSET

THREE BEDROOMS (ENSUITE BATHROOMS)

FAMILY LIVING ROOM

STUDY

GYM

TERRACES

ROOFTOP

BARBECUE

OUTDOOR LIVING & DINING AREAS

HOT TUB

MEP

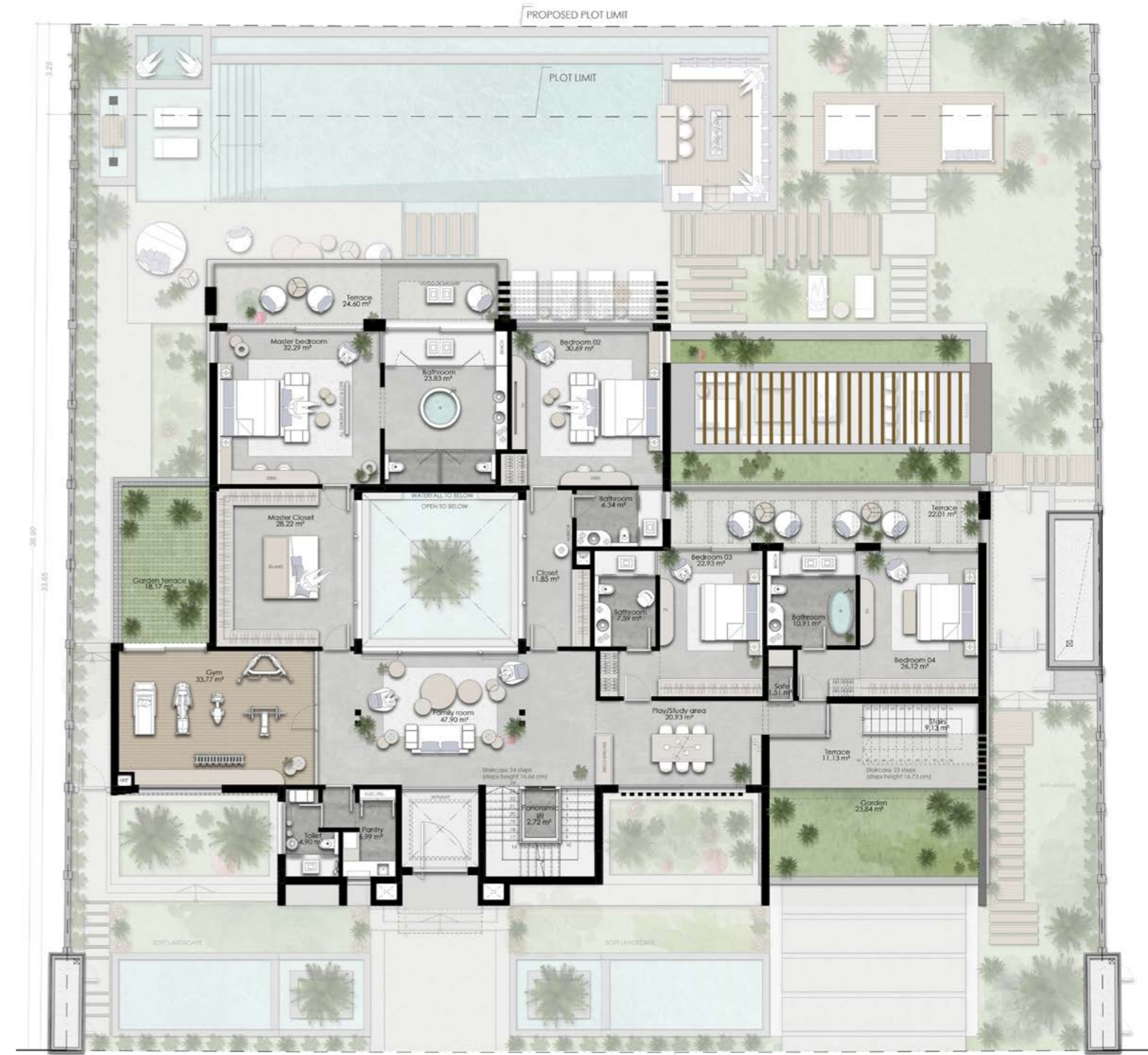


FLOOR PLANS



FLOOR TYPE	GROUND FLOOR	FIRST FLOOR	ROOF FLOOR	TOTAL AREA
SQ.FT	6,283	5,152	3,137	14,573
SQ.M	583.75	478.65	291.51	1,353.91

GROUND FLOOR



FLOOR TYPE	GROUND FLOOR	FIRST FLOOR	ROOF FLOOR	TOTAL AREA
SQ.FT	6,283	5,152	3,137	14,573
SQ.M	583.75	478.65	291.51	1,353.91

FIRST FLOOR

FLOOR PLANS



FLOOR TYPE	GROUND FLOOR	FIRST FLOOR	ROOF FLOOR	TOTAL AREA
SQ.FT	6,283	5,152	3,137	14,573
SQ.M	583.75	478.65	291.51	1,353.91

ROOF FLOOR

AMALI REDEFINES LUXURY LIVING,
ONE DREAM AT A TIME.

VILLA
Amaya





JUST AS THE SEA IS HER OWN SYMPHONY,
NATURE, HOME TO HER OWN MASTERPIECE,
EACH ODYSSEY, ITS OWN AUTHOR OF WONDER,
VILLA AMAYA IS THE ARTIST...AND THE MUSE.





KISSED BY THE SEA, CARESSSED BY HER BREEZE,
BATHED IN THE SUN AND STARS LIES A SANCTUARY
YOU CAN CALL YOUR OWN. AN OLIVE TREE-SCENTED
EDEN ON THE SHORE OF PALM JUMEIRAH, INFUSED
WITH TIMELESS, HEARTFELT PHILOSOPHIES,
AESTHETICS TO LAST FOREVER AND VIEWS TO
CAPTIVATE EVERY SINGLE DAY.





AMALI



MINUTES FROM THE MAINLAND, VILLA AMAYA
COMPLEMENTS ITS GORGEOUS ENVIRONMENT WITH
CLEAN LINES, SHAPES AND SUNSHINE-ENTICING
WINDOWS.

ITS FAÇADE IS A DISTINCTIVE PALETTE OF LIGHT
AND DARK STONE, RISING BEHIND SOFT FOUNTAINS
AND SWAYING PALMS.

AMALI

AMALI





Á



AMALI





AMALI

I AM CONVINCED
THAT THERE CAN
BE LUXURY IN
SIMPLICITY.

Jil Sander

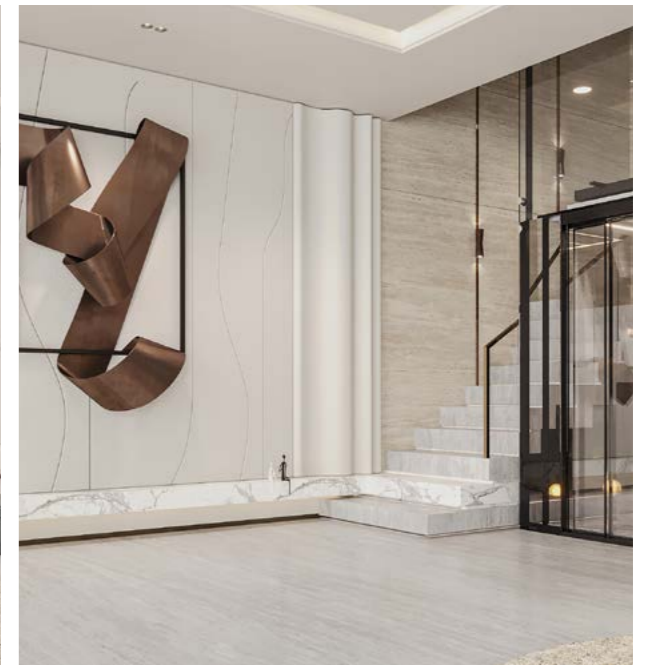
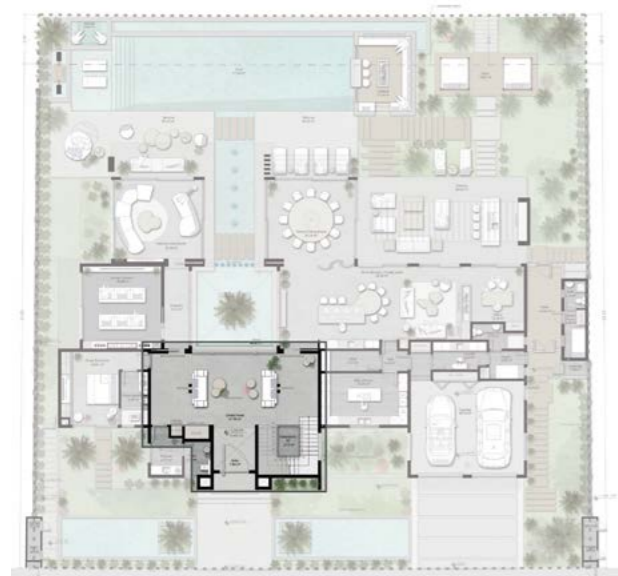
GROUND FLOOR

ENTRANCE HALL OPTION 1

MATERIAL HIGHLIGHTS

- 1. TRAVERTINE MARBLE FLOORING
- 2. CALACATTA MARBLE
- 3. PLAIN LIGHT OAK WOOD
- 4. OFF-WHITE FLUTTED WALL PANEL
- 5. BRONZE METAL
- 6. MINOTTI ROGER SOFAS
- 7. MINOTTI WEST POUF
- 8. ROCHE BOBOIS AMOR LES CONTEMPORAINES LAMP
- 9. RUGGI GALLOTI & RADICE RUG
- 10. CONNUBIA CALLIGARIS MIRO MIRRORS

LOCATION GROUND FLOOR



INTERIOR DESIGN FEATURES



BOOMA DARK PENDANT LAMP



ARTICA MANOOI PENDANT LAMP



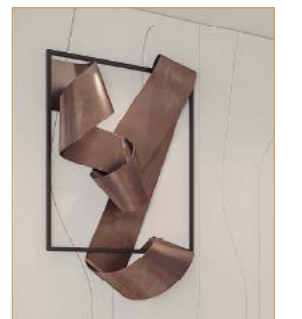
MINI FORMS SODA GLASS TABLE



BEARBRICK ERIC HAZE



PANZERI HILOW LINE



BOOMA DARK PENDANT LAMP







ART IS NOT
A LUXURY,
BUT A
NECESSITY.

Rebecca West

AMALI









AMALI

THE SEA, ONCE IT CASTS
ITS SPELL, HOLDS ONE IN
ITS NET OF WONDER FOREVER.

Jacques Yves Cousteau



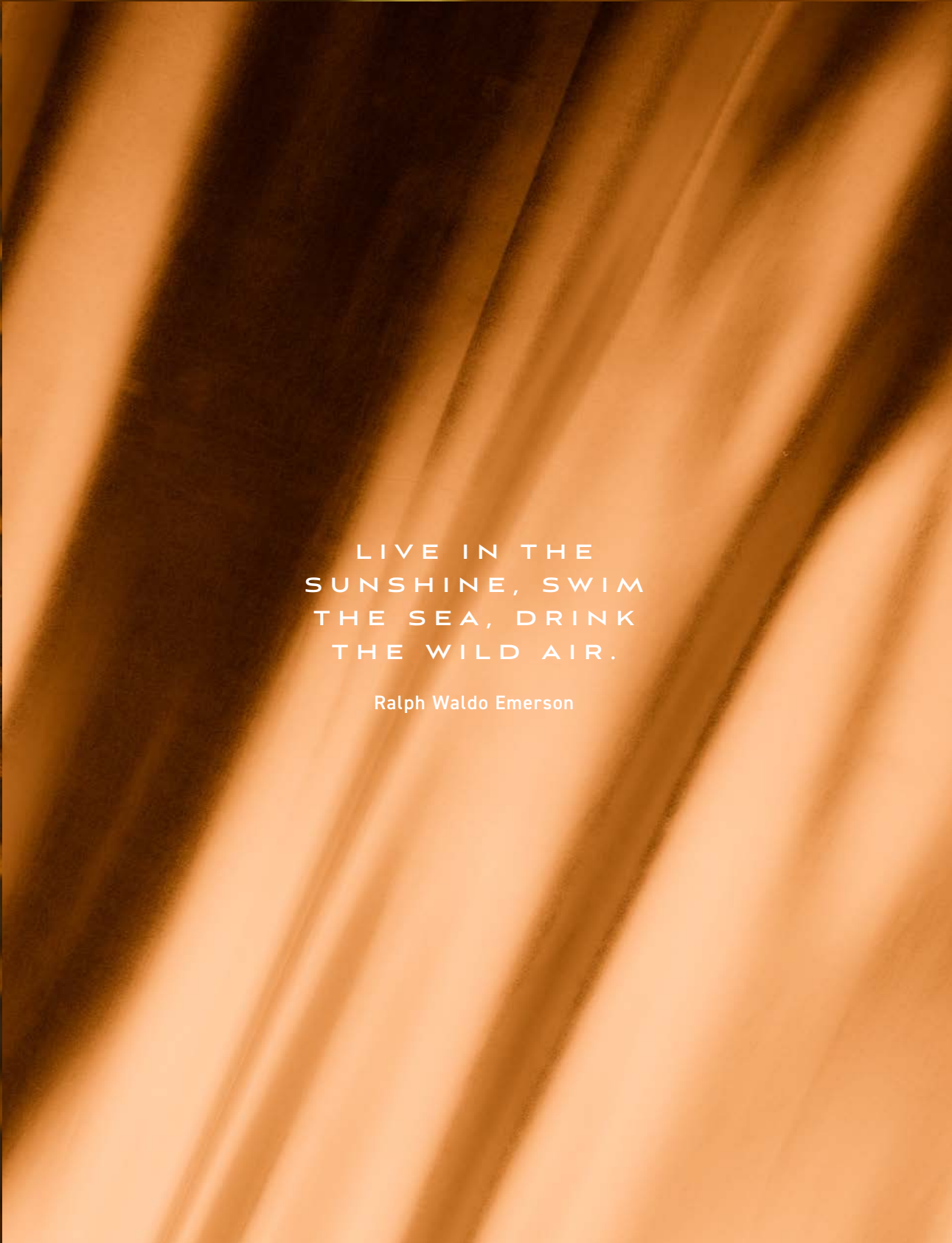
KISSED BY THE SEA, CARESSED BY
HER BREEZE, BATHED IN THE SUN AND
STARS LIES A SANCTUARY YOU CAN
CALL YOUR OWN.

AN OLIVE TREE-SCENTED EDEN ON
THE SHORE OF PALM JUMEIRAH,
INFUSED WITH TIMELESS, HEARTFELT
PHILOSOPHIES, AESTHETICS TO LAST
FOREVER AND VIEWS TO CAPTIVATE
EVERY SINGLE DAY.

AMALI

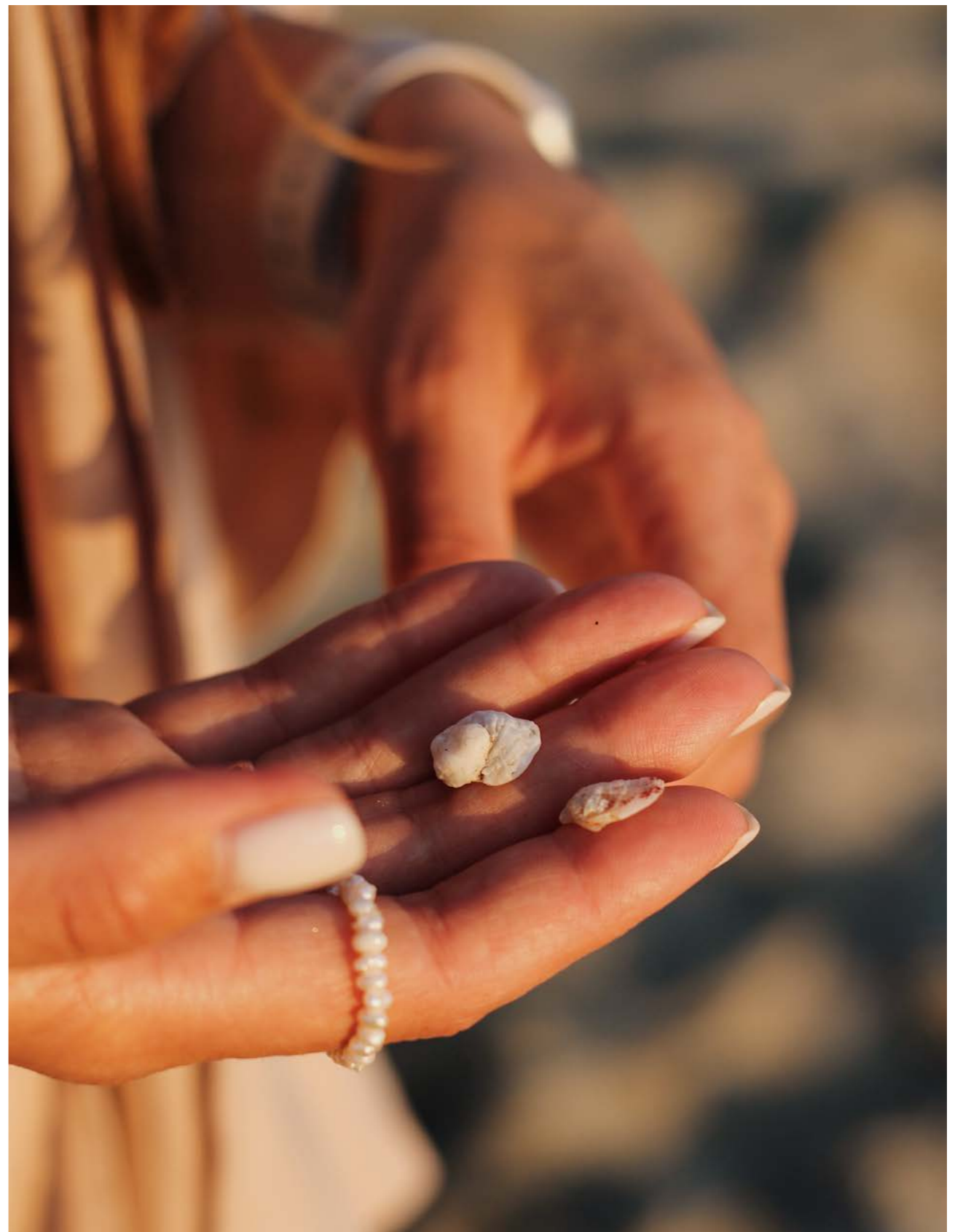






LIVE IN THE
SUNSHINE, SWIM
THE SEA, DRINK
THE WILD AIR.

Ralph Waldo Emerson



AMALI





AMALIPROPERTIES.COM