

PRINCESS SUITE - A



	SQM From - To	SQFT From - To
ROOM AREA	55.18 - 61.83	593.96 - 665.54
COMMON AREA	12.4 - 22.56	133.47 - 242.8
TERRACE	6.8 - 50.95	73.19 - 548.42
TOTAL AREA	74.37 - 135.34	800.62 - 1456.79

PRINCESS SUITE - B



	SQM	SQFT
ROOM AREA	74.03	796.86
COMMON AREA	17.33	186.54
TERRACE	12.60	135.63
TOTAL AREA	103.96	1119.03

PRINCESS SUITE - C



	SQM	SQFT
ROOM AREA	82.14	884.15
COMMON AREA	17.79	191.49
TERRACE	6.8	73.19
TOTAL AREA	106.73	1148.83

PRINCESS SUITE - D



	SQM	SQFT
ROOM AREA	88.07	947.98
COMMON AREA	20.81	223.997
TERRACE	15.98	172.00
TOTAL AREA	124.86	1343.98

QUEEN SUITE - A



 1 |
  2 |
  2 |
  1 |
  1

Certain rooms will have a terrace while others will have a marine garden.

	SQM	SQFT
ROOM AREA	123.08	1324.83
COMMON AREA	42.93	462.09
MARINE GARDEN	91.57	985.65
TOTAL AREA	257.6	2772.57

QUEEN SUITE - B



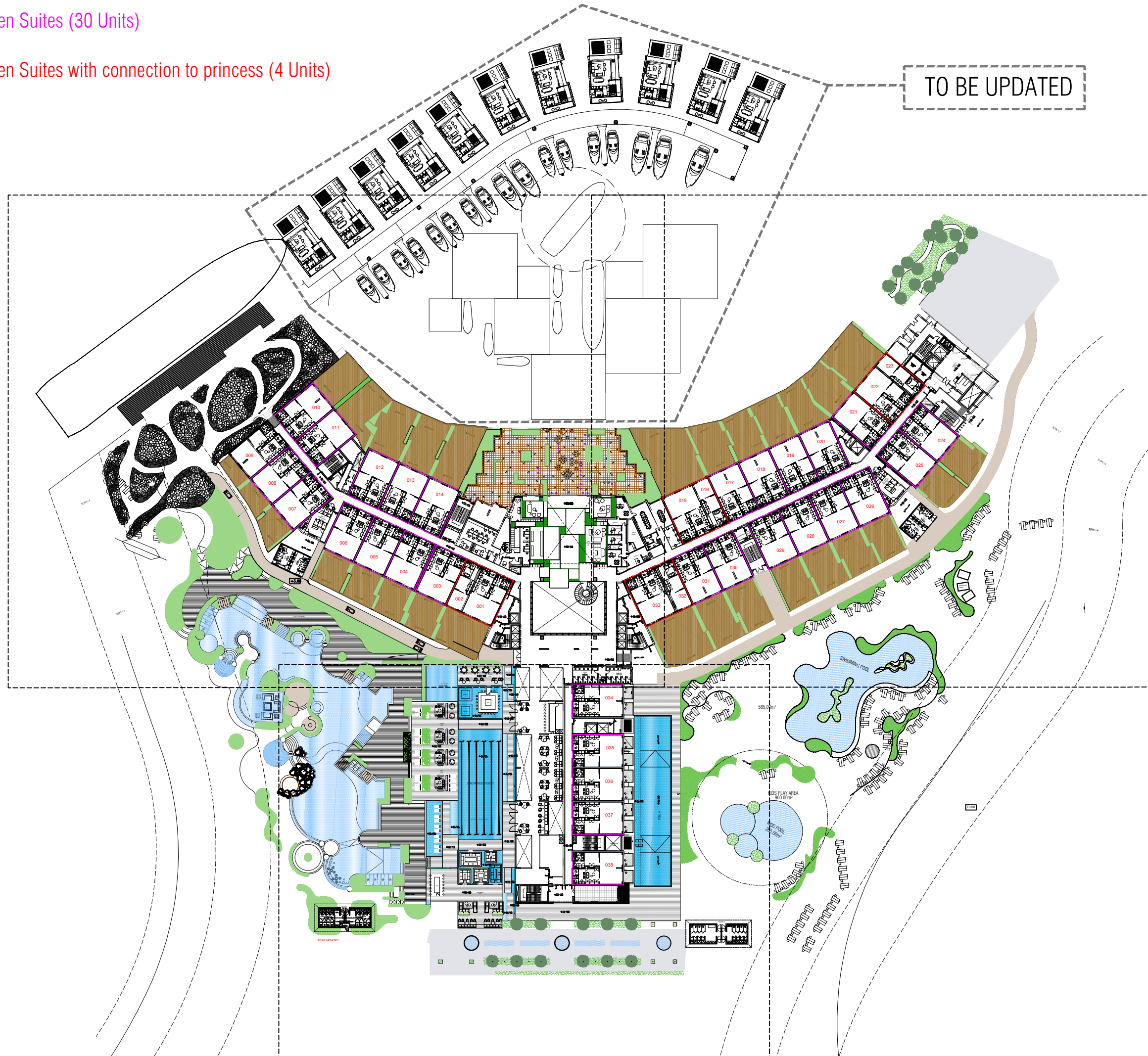
 1 |
  2 |
  2 |
  1 |
  3

	SQM	SQFT
ROOM AREA	133.46	1436.56
COMMON AREA	30.77	331.20
TERRACE	20.40	219.58
TOTAL AREA	184.63	1987.34

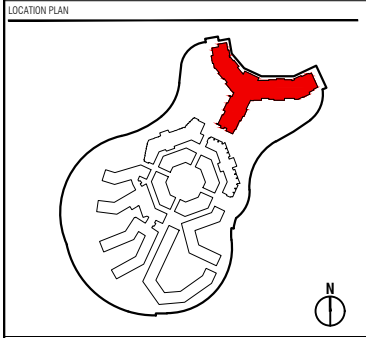
Queen Suites (30 Units)

Queen Suites with connection to princess (4 Units)

TO BE UPDATED



IN PROGRESS



DISCLAIMER

1. THIS DRAWING HAS BEEN PREPARED FOR THE USE OF THOSE. IT MAY NOT BE USED, MODIFIED, REPRODUCED OR RELIED UPON BY THIRD PARTIES, EXCEPT AS AGREED BY THOSE OR AS REQUIRED BY LAW.
2. THOSE ACCEPTS NO RESPONSIBILITY, AND DENIES ANY LIABILITY WHATSOEVER, TO ANY PARTY THAT USES OR RELIES ON THIS DRAWING WITHOUT THOSE'S EXPRESS WRITTEN CONSENT.
3. DO NOT SCALE THIS DOCUMENT. ALL MEASUREMENTS MUST BE OBTAINED FROM THE STATED DIMENSIONS. MEASUREMENT SCALING OF THIS DRAWING SHALL ONLY BE PERMITTED IN ITS DIGITAL FORM. IN CASE OF DISCREPANCY, MEASUREMENT OF BIGGER SCALE DRAWINGS PREVAILS.
4. PROJECT MANAGERS, SUPERVISORS & CONTRACTORS TO CHECK AND VERIFY ALL LEVELS, DATUMS AND DIMENSIONS ON SITE AND SHALL REPORT ANY DISCREPANCIES OR OMISSIONS TO THE DESIGN OFFICE PRIOR TO START OF WORK & DURING THE CONSTRUCTION PHASE.

REVISIONS

REV	DATE	REVISION DETAILS	BY
00			

DRAWING NOTES

1. ALL THE DRAWINGS TO BE VERIFIED BY THE STRUCTURAL MEP AND CIVIL DEFENSE APPOINTED ENGINEER. THE DRAWINGS HAS TO BE INTEND AS ARCHITECTURAL DRAWINGS ONLY.
2. SHOP DRAWINGS TO BE DEVELOP BY THE CONTRACTOR AND APPROVED BY THE PROJECT MANAGER.
3. THIS DRAWING HAS TO BE CONSIDERED AS TYPICAL DIMENSION AND CONDITIONS MIGHT CHANGE IN SIMILAR AREA OR IN RELATION TO SITE CONDITION. THE PROJECT MANAGER HAS TO VERIFY ALL THE DIMENSIONS AND NOTIFY VARIATIONS IF ANY.

OWNER / DEVELOPER

THOE LIMITED
Arenco Tower, 20th Floor
Dubai Media City, Dubai
United Arab Emirates
PO Box 126732
T +971 4 818 1481
www.THOE.com

MAIN CONTRACTOR

JK
BAUEN
P.O. Box 126732, Arenco Tower, 20th Floor, Dubai Media City, Dubai, UAE
T: +971 4 818 1481 | F: +971 4 454 2310
www.jkbauen.ae | office@jkbauen.ae

MAIN CONSULTANT

TFH
Free hand
ENGINEERING CONSULTANCY

P.O.Box 88969, Dubai, U.A.E.
AL NAHDA1-SUHAIL1 BUILDING-OFFICE NO.1402
Tel: (9714) 2618664, Fax: (9714) 2618665
EMAIL: TFH2020@YAHOO.COM

PROJECT

TW-EU-E13
THE HEART OF EUROPE
DUBAI

DRAWING TITLE

GROUND FLOOR PLAN
PROPOSAL DESIGN

ISSUE STATUS

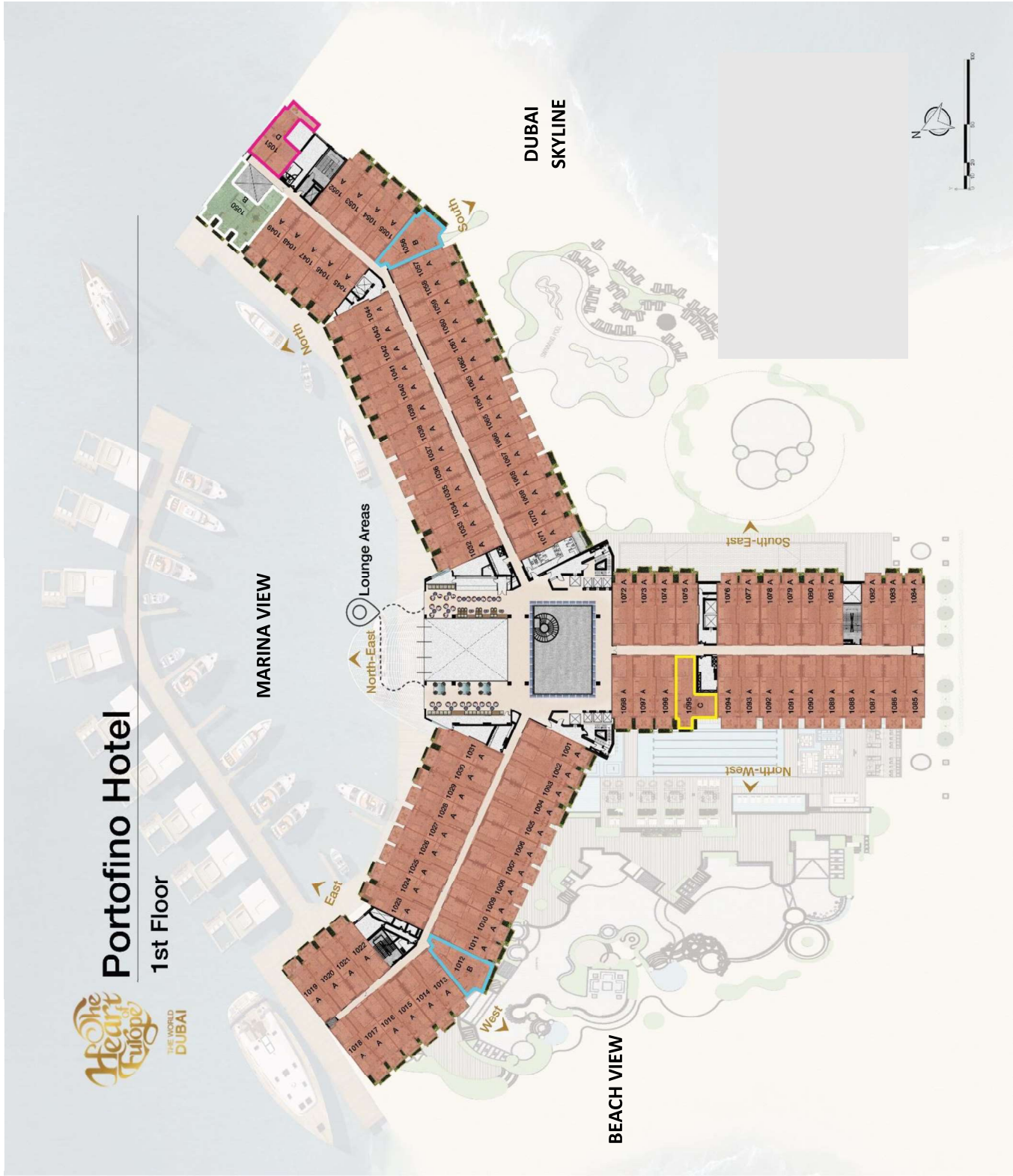
FINAL DESIGN	
Drawn:	Checked:
Designert:	Approved:
Date: 10-01-2019	Scale: 1:500
Drawing Number: THOE-E13-A-A102	Revision: 01



THE MARRIOTT
DUBAI

Portofino Hotel

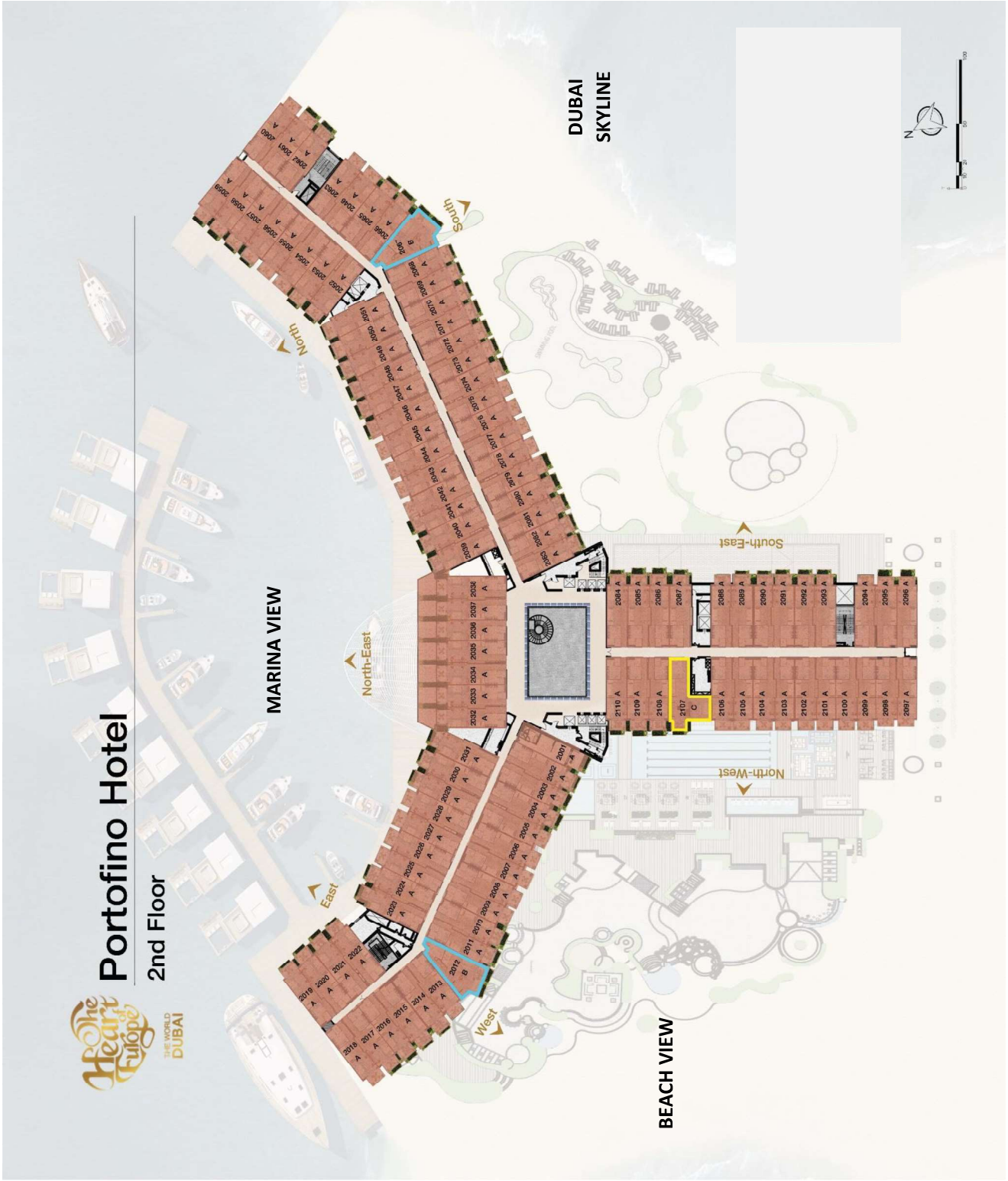
1st Floor





Portofino Hotel

2nd Floor



MARINA VIEW

DUBAI SKYLINE

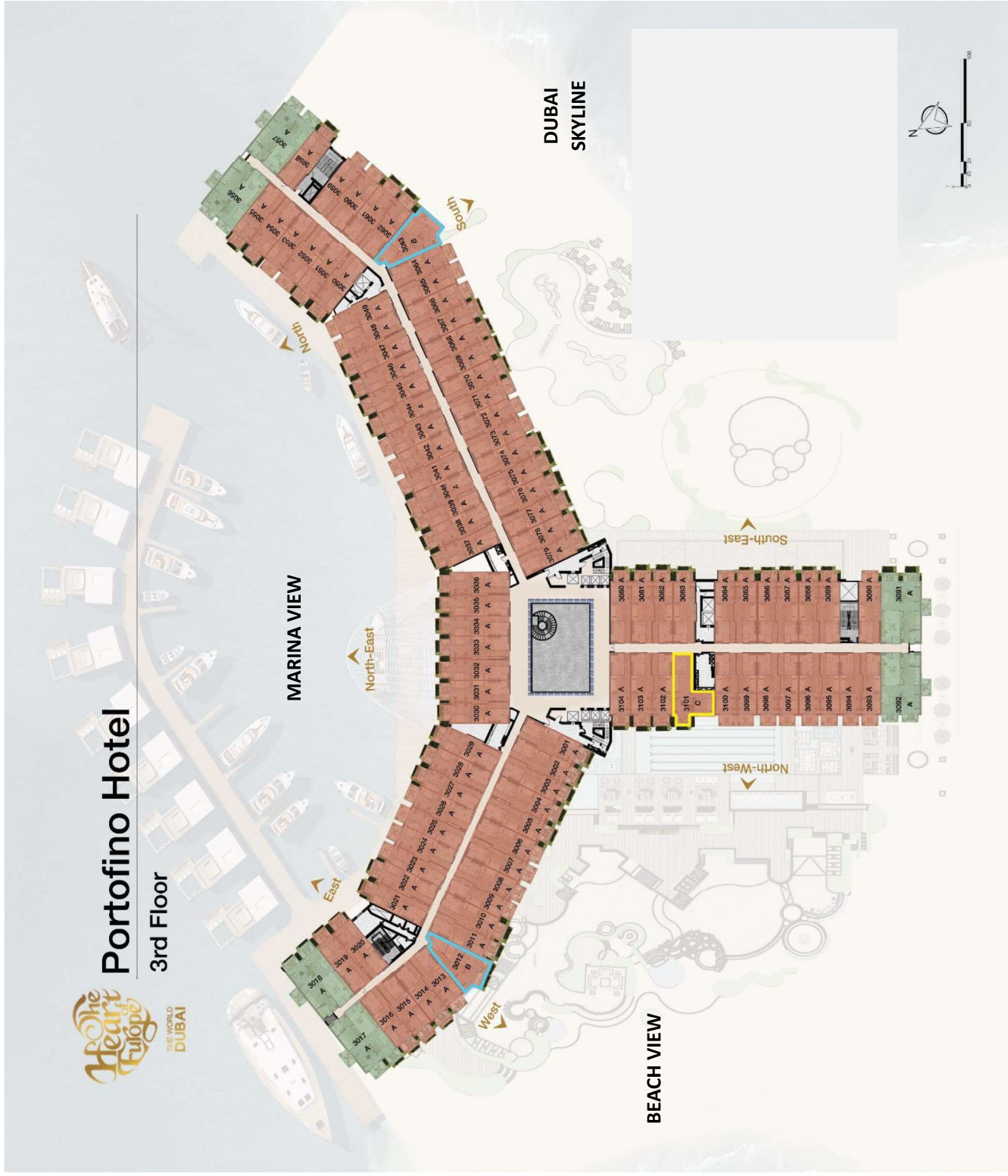
BEACH VIEW





Portofino Hotel

3rd Floor



DUBAI
SKYLINE

MARINA VIEW

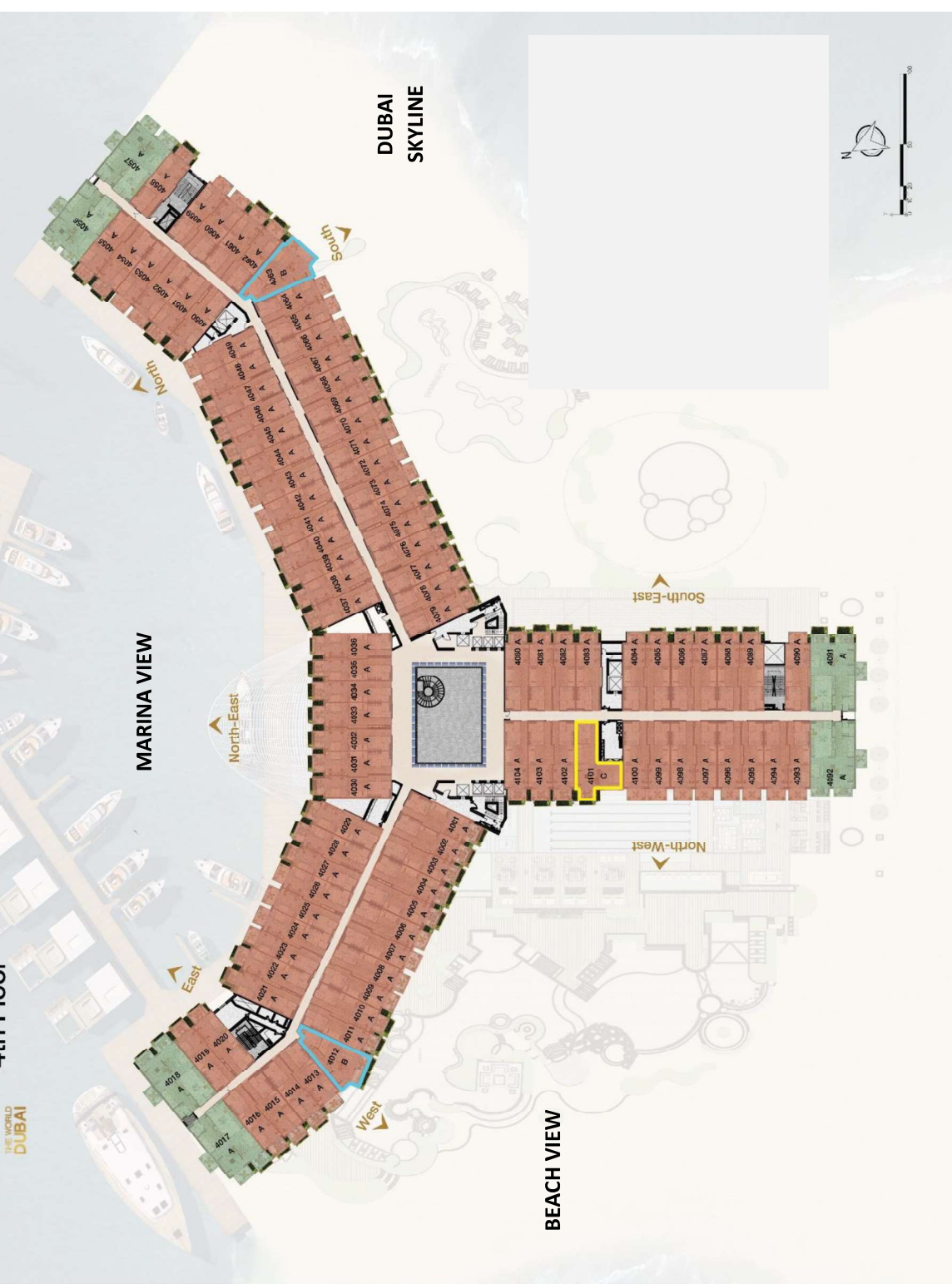
BEACH VIEW





Portofino Hotel

4th Floor



MARINA VIEW

DUBAI SKYLINE

BEACH VIEW

