

بن غاطي ايفوري
BINGHATTI IVORY



In the heart of Dubai's vibrant real estate landscape, Binghatti stands as a testament to architectural ingenuity and unwavering commitment to excellence. As a distinguished Emirati property brand, Binghatti has carved a niche for itself by creating iconic landmarks that redefine the skyline. The brand's diverse portfolio caters to a wide spectrum of discerning clientele, offering projects that range from accessible elegance to ultra-high-end luxury. Binghatti's signature design DNA, meticulously woven into each development, sets it apart on the global stage. With over 60 projects valued at more than AED 40 billion, Binghatti is a leading privately held developer in the UAE. The company's impressive track record, including the successful delivery of 20,000 units prior to 2024, underscores its dedication to crafting exceptional living spaces. Through groundbreaking collaborations with prestigious luxury brands such as BUGATTI, Mercedes-Benz, and Jacob & Co., Binghatti continues to push boundaries and set new benchmarks in the world of branded real estate.

On the plains of dreams...

A place reveals itself somewhere between rarity and beauty...

Where elegance finds its rarest expression.

Ivory, a sanctuary formed from threads of timelessness and artistry...

A place where the essence of scarcity becomes the revelry of taste.

Here, the walls utter of journeys...

Where charm and tradition unfold in the allure of modernity.

Every space within Ivory is the key to an intrepid life....

Where past discovers present.

Equally, every detail echoes naturally.

A testament to a life lived in grace and timelessness.

Ivory is an ode to the collector, the curator, the pioneering ones...

Who seek out beauty in its most cherished form.

A place to awaken to the elegant, the extraordinary...

A place to feel time stand still...

Ivory : Discover in awe that which is most sought-after.

A wide-angle photograph of the Dubai skyline at sunset. The sky is a mix of soft pinks, oranges, and yellows. The water in the foreground is calm, reflecting the colors of the sky. The Burj Khalifa is the tallest building in the center, and the Burj Al Arab is on the left. Other skyscrapers are visible in the background.

Profoundly Rare Exclusivity

In the vibrant heart of Dubai, a sanctuary awaits.
Ivory offers a realm of curated living, meticulously designed
to inspire and elevate.

*Elegance's
Rarest Expression*



About the Project

01

Design Details

02

Floor Plans

03



QUITI

EOUTI

ME



About the Project





Binghatti Ivory

Architectural elements, each echoing journeys and discoveries, create spaces of harmonious revelation and refined beauty. Ivory's façade, a testament to modern elegance, seamlessly blends enduring materials into a contemporary form.



Boundless in Al Jaddaf

Ivory's prime location in Al Jaddaf places you at the crossroads of Dubai's vibrant energy and serene artistry. Connected to the city's pulse yet offering a tranquil escape. Imagine awakening to panoramic views of the iconic Burj Khalifa, the majestic Dubai Frame, and the ever-evolving Al Khail Road, each a testament to boundless ambition and human ingenuity.



Inspiration Forged from Intrepid Exploration

Ivory embodies a vision of curated living, a home where scarcity transforms into celebration. It's a testament to a life lived in grace and timeless pursuit.





بن غاطي
BINGHATTI

بن غاطي
BINGHATTI



Project Facts

PROPERTY TYPE

Residential & Retail

PLOT AREA

3088.32 SQ.M / 33242.00 SQFT

DESCRIPTION

2B + G + 3P +20 Residential Floors + Roof

NUMBER OF UNITS

Studio Apartment - 76

1 Bedroom Apartment - 177

2 Bedroom Apartment - 78

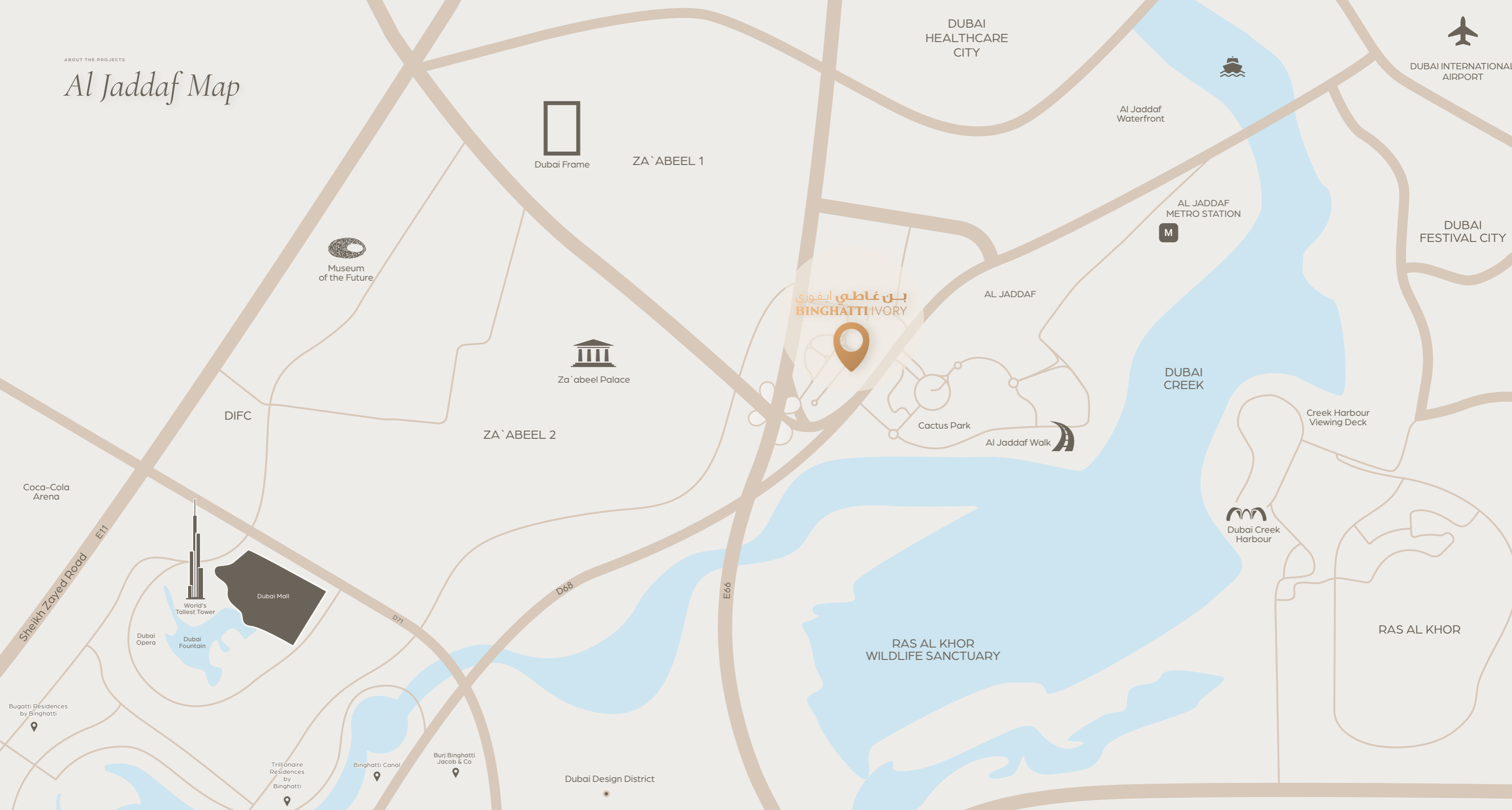
TOTAL UNITS

Residential units - 331

Shop (Ground Floor) - 01

ABOUT THE PROJECTS

Al Jaddaf Map



Burj Khalifa & Downtown Dubai
3-5 MINUTES



Dubai Opera
3-5 MINUTES



The Dubai Mall
3-5 MINUTES



Dubai Design District
5-8 MINUTES



Meydan Racecourse
5-10 MINUTES



Ras Al Khor Wildlife Sanctuary
5-10 MINUTES



Museum of the Future
4-6 MINUTES



Dubai Frame
4-6 MINUTES



Al Jaddaf Walk
2-3 MINUTES

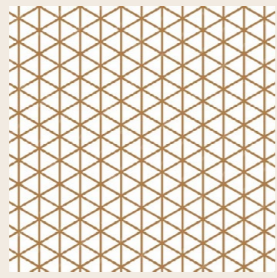


Details

Design 02

Material Lists

Lobby Materials



Metal Mesh



Travertine



Copper





بـنـيـنـيـنـي
BINGHATTI





DESIGN DETAILS

DESIGN DETAILS

Material Lists

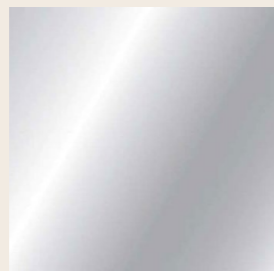
Apartment Materials



Wood Porcelain



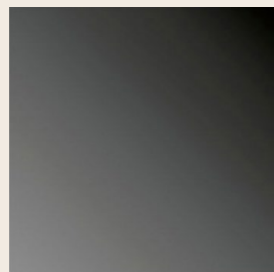
Brushed Brass



Mirror



Tan Oak Wood



Black Tinted Glass







Material Lists

Bathroom Materials



Exotic Green Porcelain



Tan Oak Wood



Travertine







Floor Plans

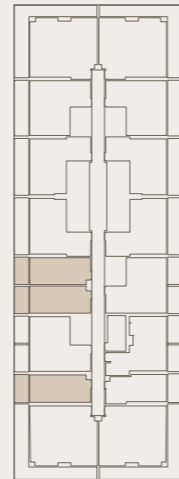
03

*A Harbour for the
Discerning Explorer*



Studio

Isometric View



AREA	SQ.M	SQ.FT
SUITE AREA	35.13 m ²	378.14 ft ²
BALCONY AREA	8.87 m ²	95.48 ft ²
TOTAL UNITE AREA	44.00 m ²	473.61 ft ²

Disclaimer: 1. All room dimensions are measured to structural elements and exclude wall finishes and construction tolerances. 2. All dimensions have been provided by our consultant architects. 3. All materials, dimensions and drawings are approximate. Information is subject to change without notice. 4. Actual suite area may vary from the stated area. Drawings not to scale. The developer reserves the right to make revisions. 5. Calculation of suite area is measured as the area bounded by the centre line of demising or partition walls separating one unit from another unit, the exterior face of all exterior walls, and the exterior face of the corridor wall enclosing the adjoining unit. 6. Calculation of balcony area is measured as the area bounded by the centre line of demising or partition walls separating one unit from another unit, the outmost face of the enclosing guard and the external face of the adjoining balcony. 7. The units are measured at typical floor in the building. Columns may vary in size depending on the floor level. 8. For each unit type, unit sizes and details might be slightly different. Please refer to the sales and purchase agreement for the actual size of each specific unit.



*Unwavering Craftsmanship
and Sustainability*



*A Meticulous
Material Palette*



*Reimagined for the
Intrepid Spirit*



*Embark on a Journey of
Timeless Discovery*





بن غاطي
BINGHATTI