

Studio



The Floorplans **STUDIO**

The developer reserves the right to make revisions. All the measurements and drawings are approximate. This information is subject to change without notice. Do not scale drawings. Artistic renderings, landscaping and images are for illustrative purposes only and are subject to change without notice. March 2021.

Typical
One Bedroom



Typical Corner
One Bedroom



The Floorplans **1 BEDROOM**

The developer reserves the right to make revisions. All the measurements and drawings are approximate. This information is subject to change without notice. Do not scale drawings. Artistic renderings, landscaping and images are for illustrative purposes only and are subject to change without notice. March 2021.

Two Bedroom - Type A



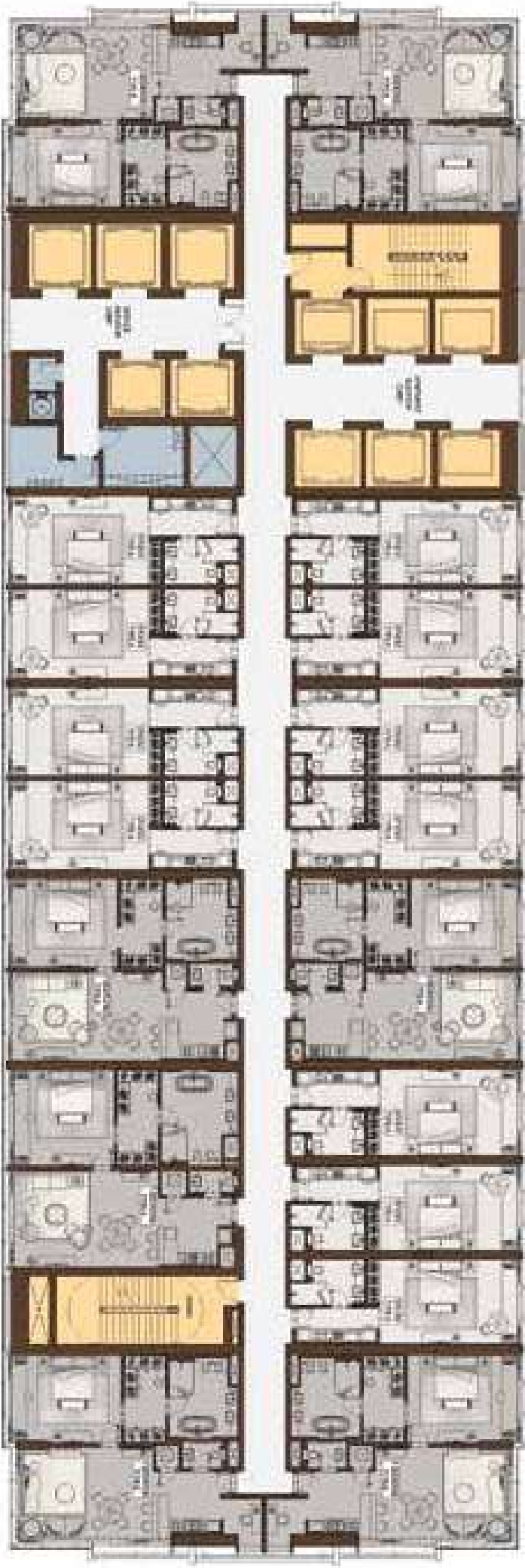
Two Bedroom - Type B



The Floorplans **2 BEDROOM**

The developer reserves the right to make revisions. All the measurements and drawings are approximate. This information is subject to change without notice. Do not scale drawings. Artistic renderings, landscaping and images are for illustrative purposes only and are subject to change without notice. March 2021.

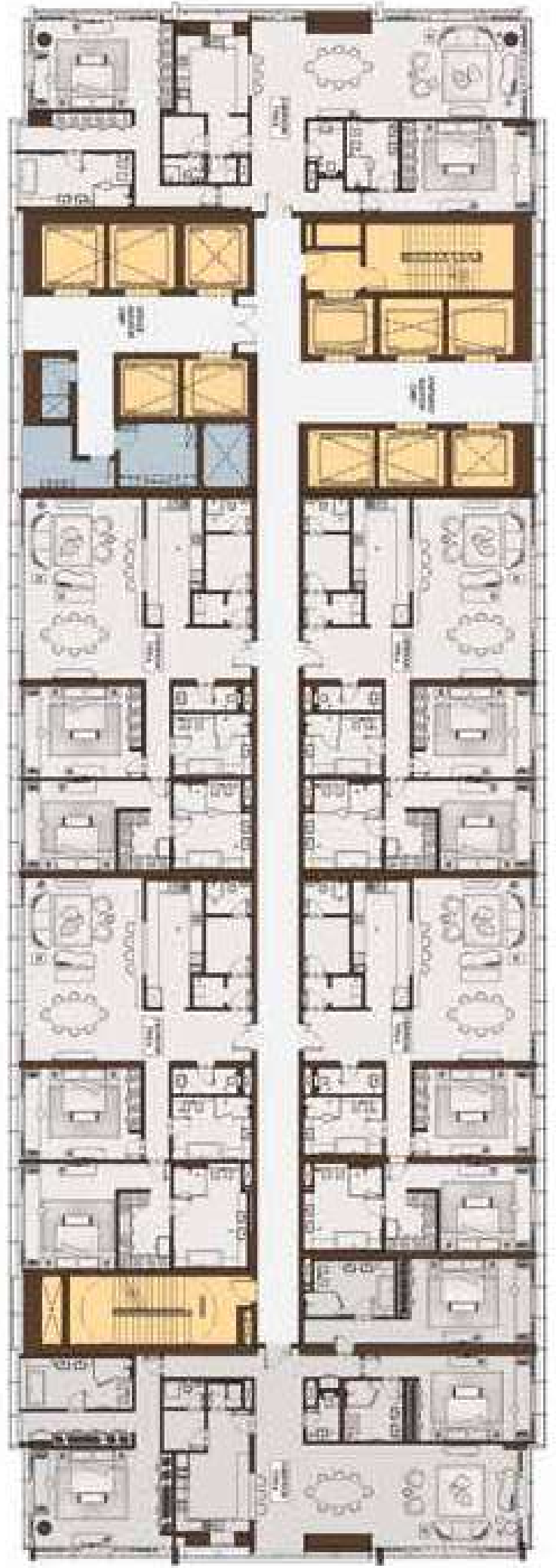
ATLANTIS VIEW



WEST - DUBAI MARINA VIEW

CITY VIEW

ATLANTIS VIEW



EAST - BURJ AL ARAB VIEW

CITY VIEW

- STUDIO/2 BEDROOM
- 1 BEDROOM/3 BEDROOM
- COMMON AREA
- STAIRS / ELEVATORS

Sample Key Plans