

# THE AUTOGRAPH

BY GREEN GROUP

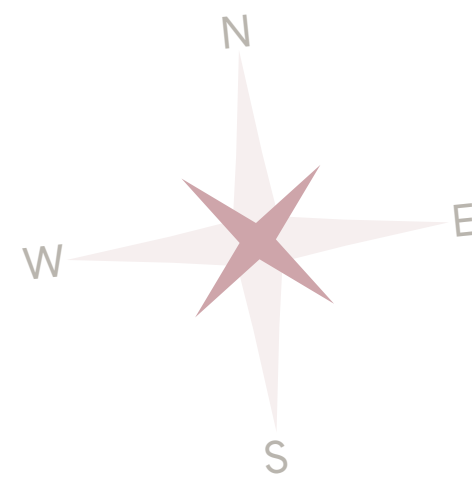
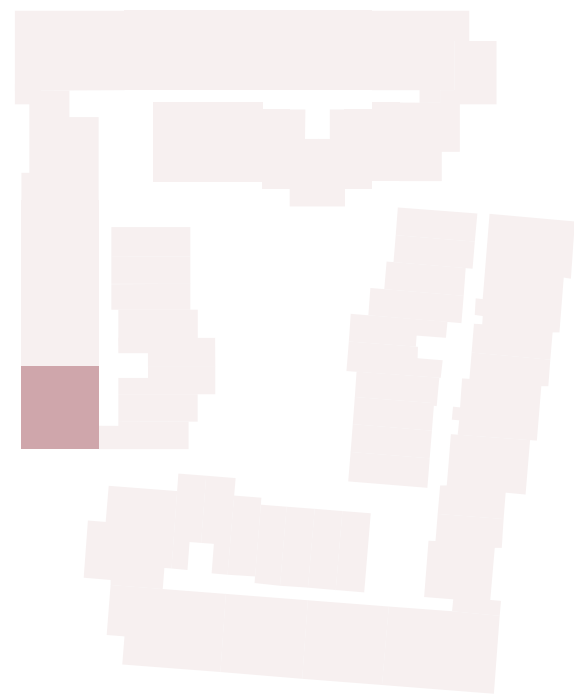
## TWO BEDROOM PENTHOUSE

N - 4 - Terrace Home - 09  
FOURTH FLOOR

### COMMUNITY

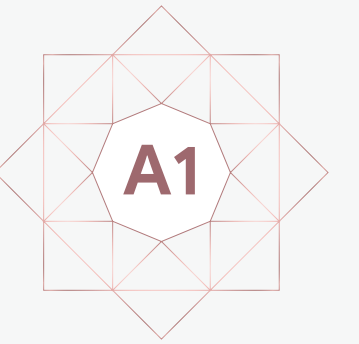
Suite	851 SQF	79.10 SQM
Terrace	549 SQF	51.03 SQM
Total Area	1,401 SQF	130.13 SQM

KEYPLAN



#### DISCLAIMER

All drawings and dimensions are approximate. Drawings are not to scale and are subject to change without notice. The developer reserves the right to make revisions. The units are taken from the typical floor of the building and columns may vary in size depending on the floor level. The furnishings and accessories shown are for representation only. The length and width of the unit and balcony varies depending on which floor and which orientation the unit is located within the building to comply with the building authority regulations.



# THE AUTOGRAPH

BY GREEN GROUP

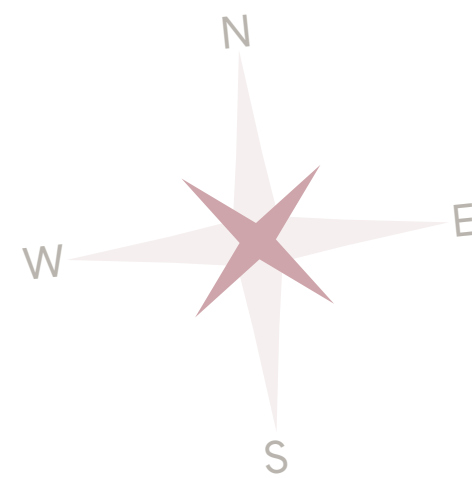
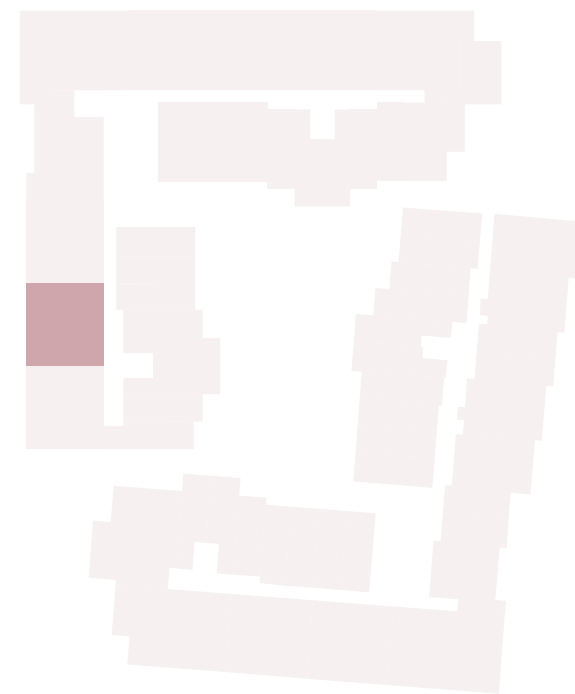
## TWO BEDROOM PENTHOUSE

N - 4 - Terrace Home - 10  
FOURTH FLOOR

### COMMUNITY

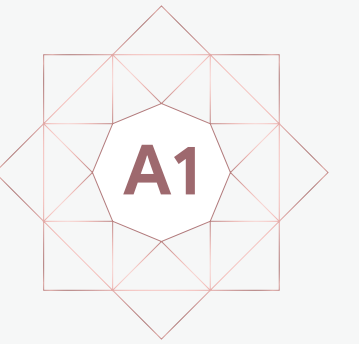
Suite	849 SQF	78.90 SQM
Terrace	520 SQF	48.35 SQM
Total Area	1,370 SQF	127.25 SQM

KEYPLAN



#### DISCLAIMER

All drawings and dimensions are approximate. Drawings are not to scale and are subject to change without notice. The developer reserves the right to make revisions. The units are taken from the typical floor of the building and columns may vary in size depending on the floor level. The furnishings and accessories shown are for representation only. The length and width of the unit and balcony varies depending on which floor and which orientation the unit is located within the building to comply with the building authority regulations.



# THE AUTOGRAPH

BY GREEN GROUP

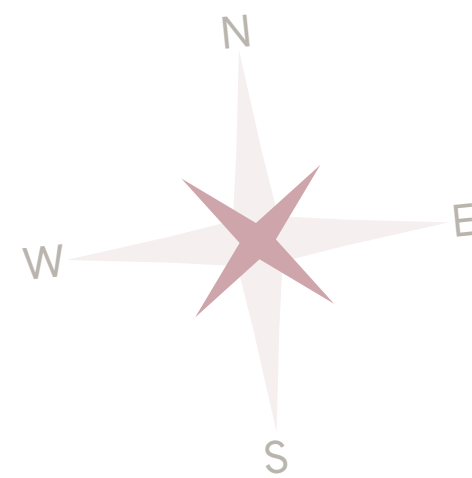
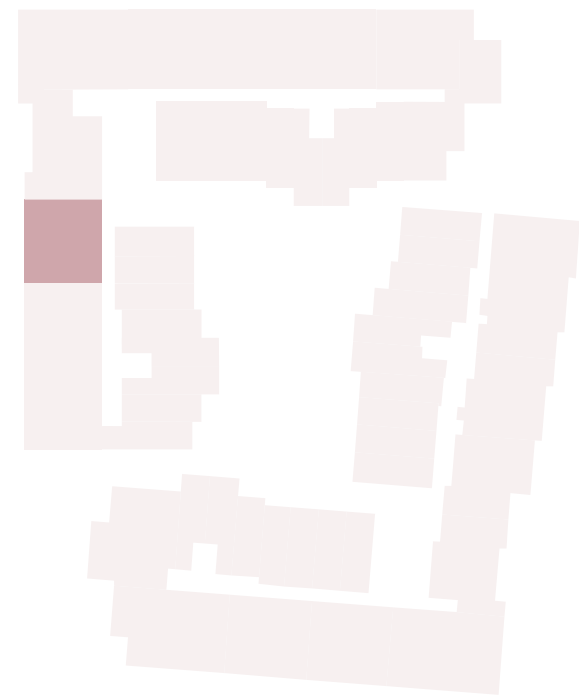
## TWO BEDROOM PENTHOUSE

N - 4 - Terrace Home - 11  
FOURTH FLOOR

### COMMUNITY

Suite	847 SQF	78.7 SQM
Terrace	524 SQF	48.7 SQM
Total Area	1,371 SQF	127.4 SQM

KEYPLAN



#### DISCLAIMER

All drawings and dimensions are approximate. Drawings are not to scale and are subject to change without notice. The developer reserves the right to make revisions. The units are taken from the typical floor of the building and columns may vary in size depending on the floor level. The furnishings and accessories shown are for representation only. The length and width of the unit and balcony varies depending on which floor and which orientation the unit is located within the building to comply with the building authority regulations.



# THE AUTOGRAPH

BY GREEN GROUP

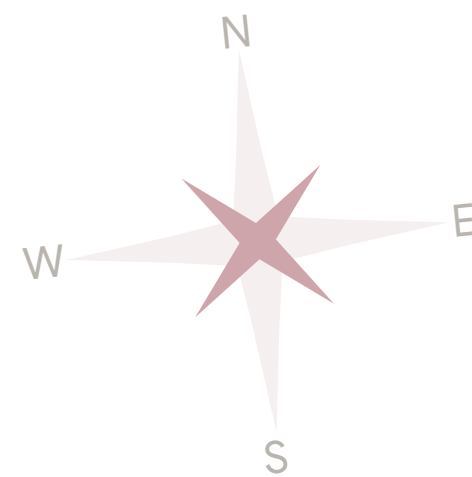
## TWO BEDROOM PENTHOUSE

N - 4 - Terrace Home - 12  
FOURTH FLOOR

### COMMUNITY

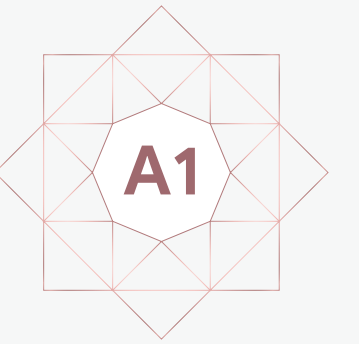
Suite	851 SQF	79.0 SQM
Terrace	718 SQF	66.7 SQM
Total Area	1,569 SQF	145.7 SQM

KEYPLAN



#### DISCLAIMER

All drawings and dimensions are approximate. Drawings are not to scale and are subject to change without notice. The developer reserves the right to make revisions. The units are taken from the typical floor of the building and columns may vary in size depending on the floor level. The furnishings and accessories shown are for representation only. The length and width of the unit and balcony varies depending on which floor and which orientation the unit is located within the building to comply with the building authority regulations.



# THE AUTOGRAPH

BY GREEN GROUP

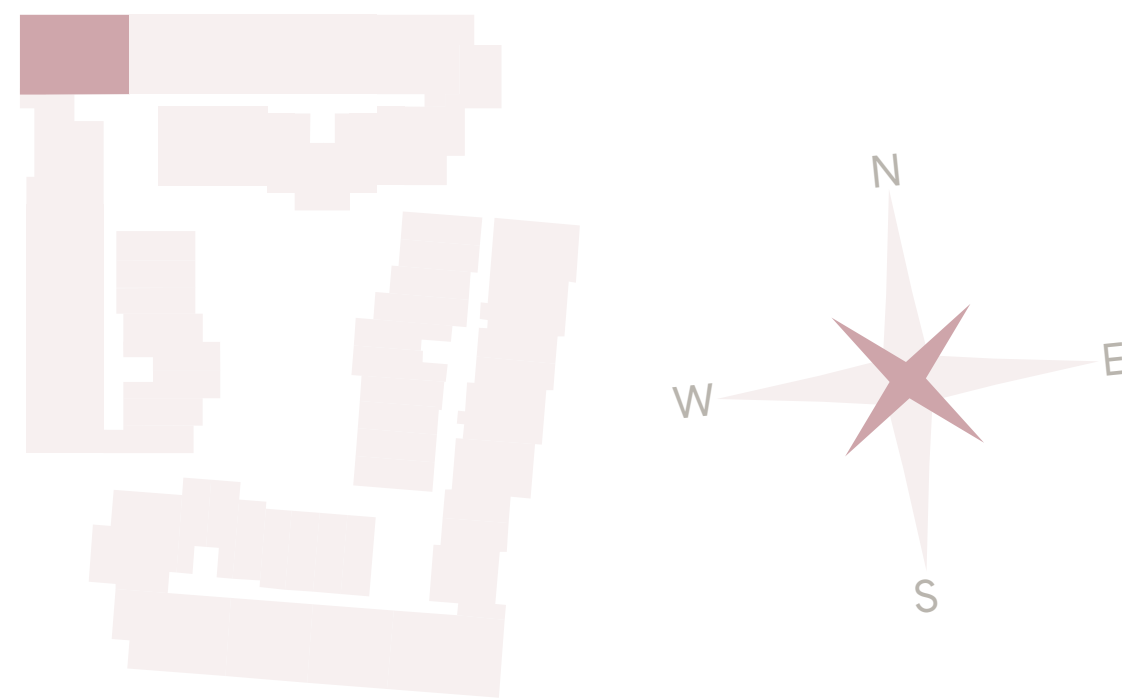
## TWO BEDROOM PENTHOUSE

N - 4 - Terrace Home - 13  
FOURTH FLOOR

### COMMUNITY

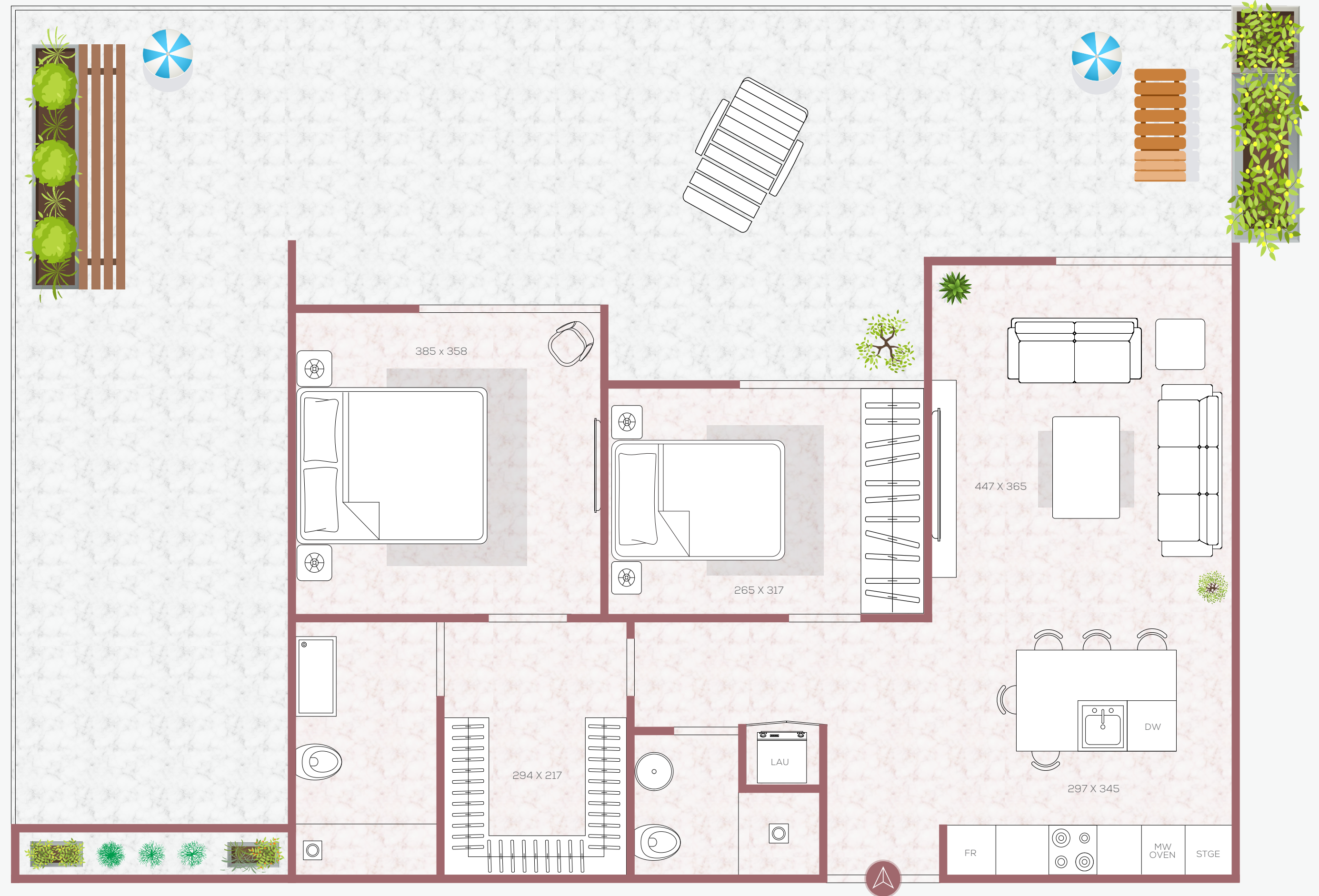
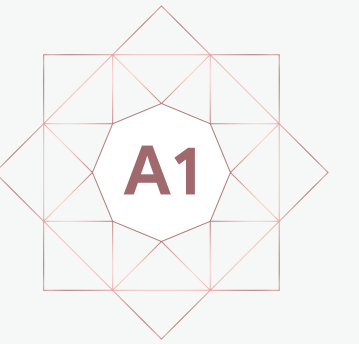
Suite	869 SQF	80.7 SQM
Terrace	996 SQF	92.5 SQM
Total Area	1,865 SQF	173.25 SQM

KEYPLAN



#### DISCLAIMER

All drawings and dimensions are approximate. Drawings are not to scale and are subject to change without notice. The developer reserves the right to make revisions. The units are taken from the typical floor of the building and columns may vary in size depending on the floor level. The furnishings and accessories shown are for representation only. The length and width of the unit and balcony varies depending on which floor and which orientation the unit is located within the building to comply with the building authority regulations.



# THE AUTOGRAPH

BY GREEN GROUP

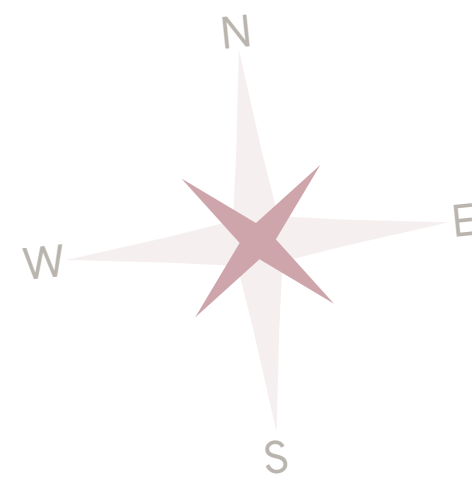
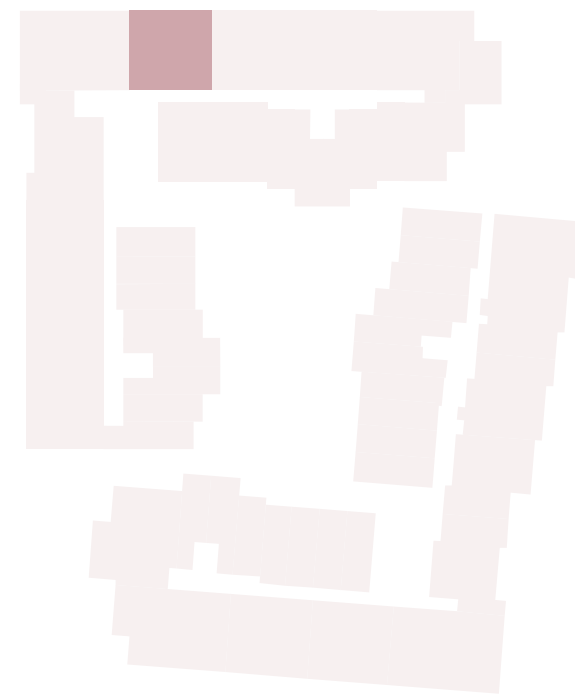
## TWO BEDROOM PENTHOUSE

N - 4 - Terrace Home - 14  
FOURTH FLOOR

### COMMUNITY

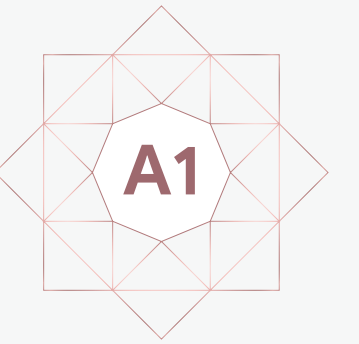
Suite	856 SQF	79.57 SQM
Terrace	538 SQF	49.95 SQM
Total Area	1,394 SQF	129.52 SQM

KEYPLAN



#### DISCLAIMER

All drawings and dimensions are approximate. Drawings are not to scale and are subject to change without notice. The developer reserves the right to make revisions. The units are taken from the typical floor of the building and columns may vary in size depending on the floor level. The furnishings and accessories shown are for representation only. The length and width of the unit and balcony varies depending on which floor and which orientation the unit is located within the building to comply with the building authority regulations.



# THE AUTOGRAPH

BY GREEN GROUP

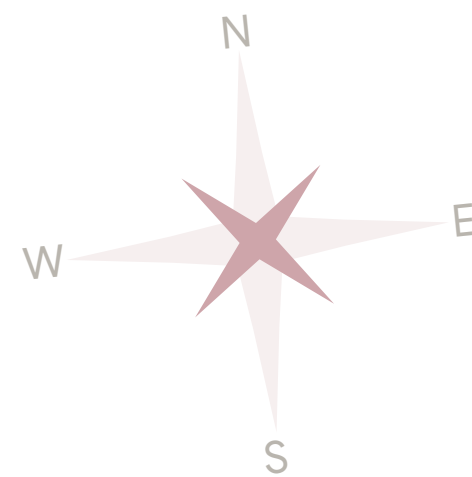
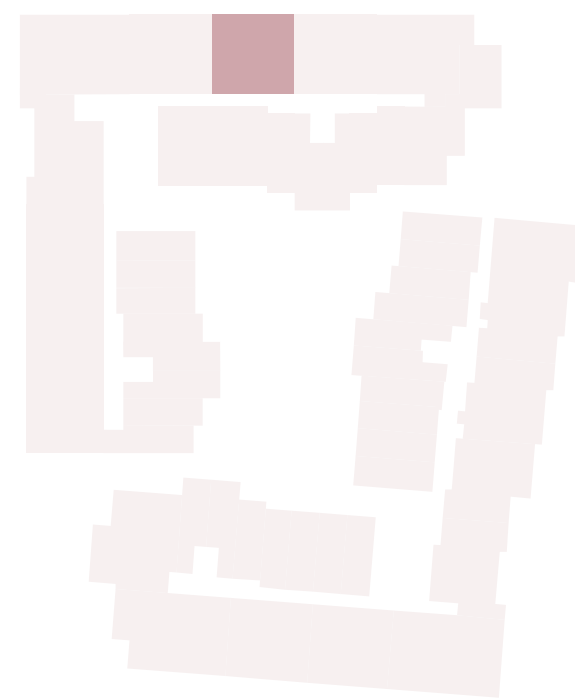
## TWO BEDROOM PENTHOUSE

N - 4 - Terrace Home - 15  
FOURTH FLOOR

### COMMUNITY

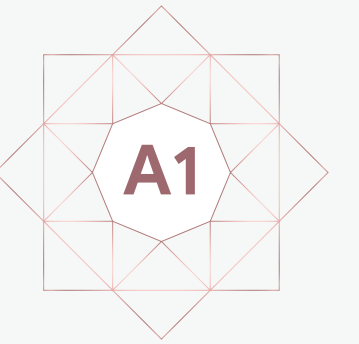
Suite	856 SQF	79.57 SQM
Terrace	528 SQF	49.03 SQM
Total Area	1,384 SQF	128.60 SQM

KEYPLAN



#### DISCLAIMER

All drawings and dimensions are approximate. Drawings are not to scale and are subject to change without notice. The developer reserves the right to make revisions. The units are taken from the typical floor of the building and columns may vary in size depending on the floor level. The furnishings and accessories shown are for representation only. The length and width of the unit and balcony varies depending on which floor and which orientation the unit is located within the building to comply with the building authority regulations.



# THE AUTOGRAPH

BY GREEN GROUP

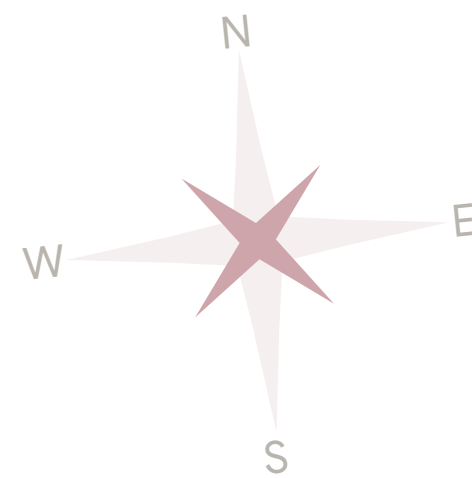
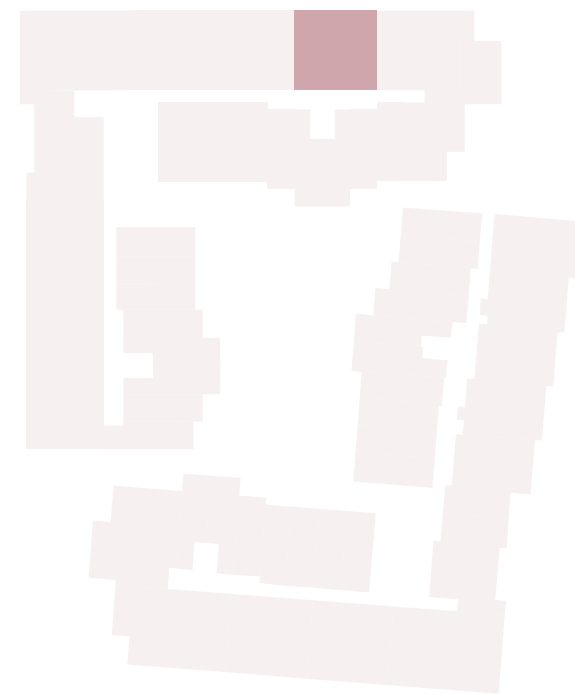
## TWO BEDROOM PENTHOUSE

N - 4 - Terrace Home - 16  
FOURTH FLOOR

### COMMUNITY

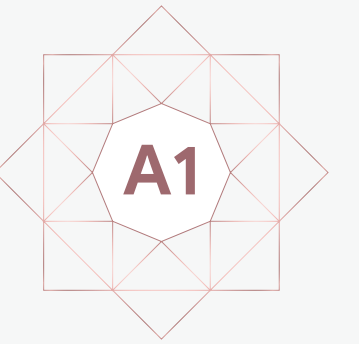
Suite	857 SQF	79.61 SQM
Terrace	537 SQF	49.91 SQM
Total Area	1,394 SQF	129.52 SQM

KEYPLAN



#### DISCLAIMER

All drawings and dimensions are approximate. Drawings are not to scale and are subject to change without notice. The developer reserves the right to make revisions. The units are taken from the typical floor of the building and columns may vary in size depending on the floor level. The furnishings and accessories shown are for representation only. The length and width of the unit and balcony varies depending on which floor and which orientation the unit is located within the building to comply with the building authority regulations.





# THE AUTOGRAPH

BY GREEN GROUP

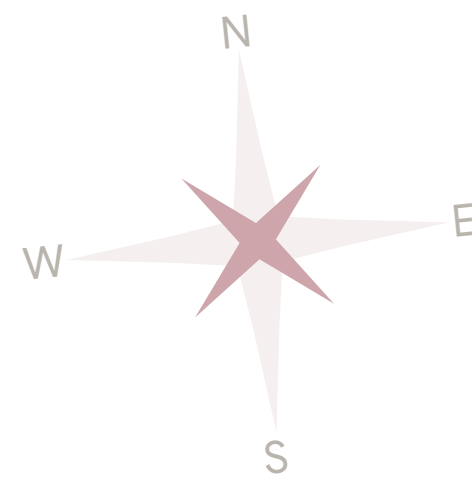
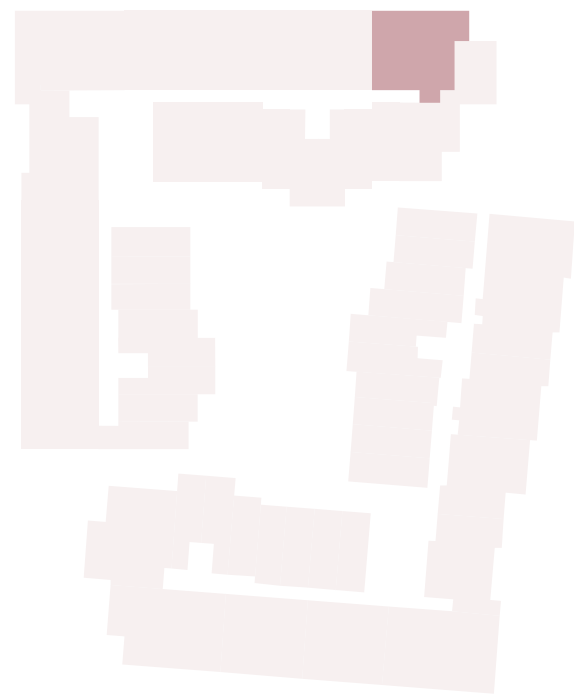
## TWO BEDROOM PENTHOUSE

N - 4 - Terrace Home - 17  
FOURTH FLOOR

### COMMUNITY

Suite	924 SQF	85.8 SQM
Terrace	598 SQF	55.5 SQM
Total Area	1,521 SQF	141.3 SQM

#### KEYPLAN



#### DISCLAIMER

All drawings and dimensions are approximate. Drawings are not to scale and are subject to change without notice. The developer reserves the right to make revisions. The units are taken from the typical floor of the building and columns may vary in size depending on the floor level. The furnishings and accessories shown are for representation only. The length and width of the unit and balcony varies depending on which floor and which orientation the unit is located within the building to comply with the building authority regulations.



# THE AUTOGRAPH

BY GREEN GROUP

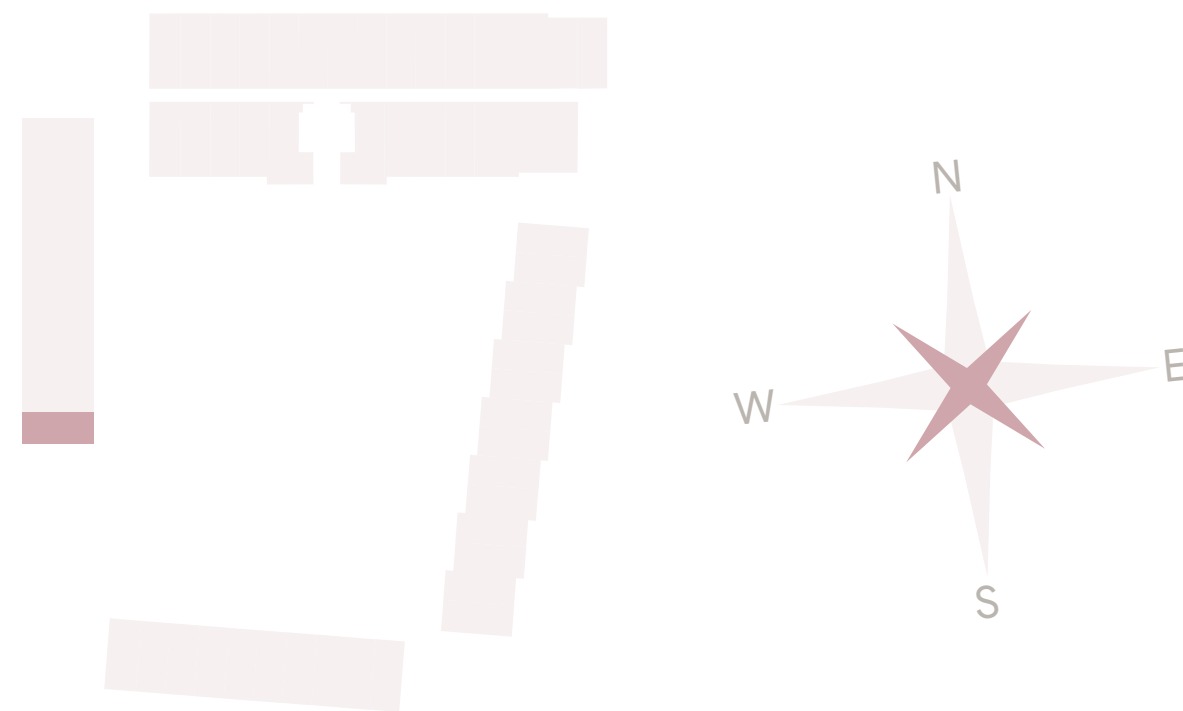
## DESIGNER SUITE

N - G - GARDEN HOME - 1  
GROUND FLOOR

### COMMUNITY

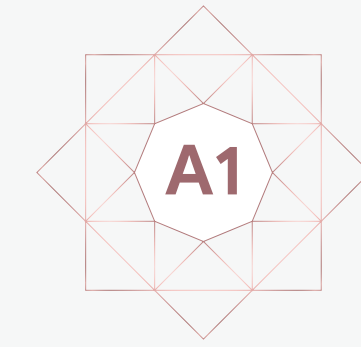
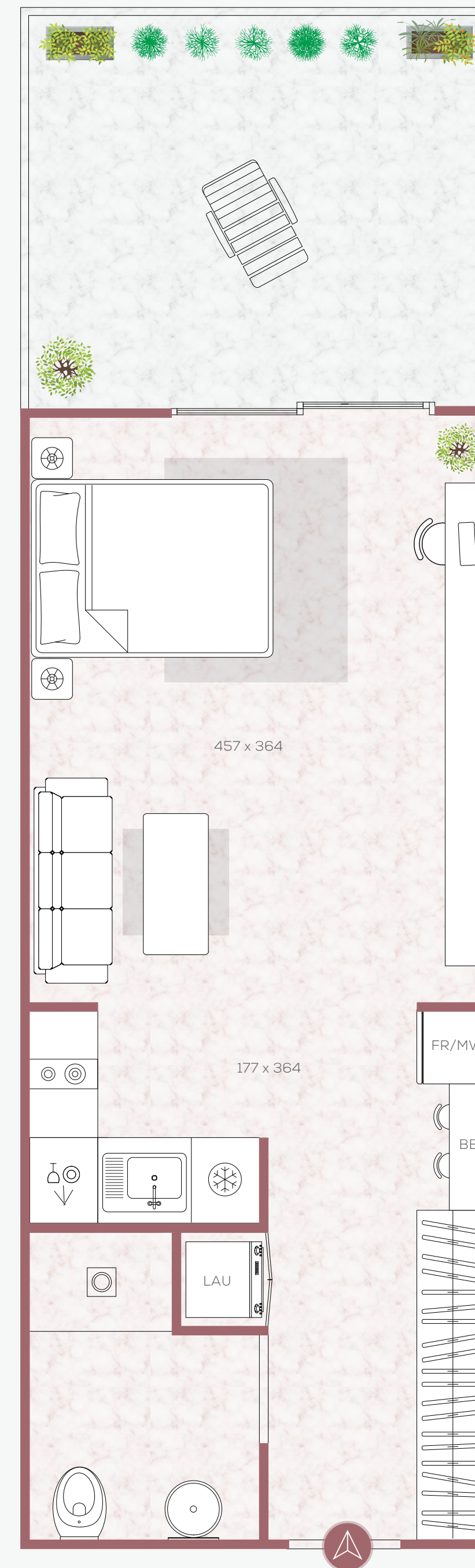
Suite	383 SQF	35.61 SQM
Terrace	128 SQF	11.93 SQM
Total Area	512 SQF	47.54 SQM

#### KEYPLAN



#### DISCLAIMER

All drawings and dimensions are approximate. Drawings are not to scale and are subject to change without notice. The developer reserves the right to make revisions. The units are taken from the typical floor of the building and columns may vary in size depending on the floor level. The furnishings and accessories shown are for representation only. The length and width of the unit and balcony varies depending on which floor and which orientation the unit is located within the building to comply with the building authority regulations.



# THE AUTOGRAPH

BY GREEN GROUP

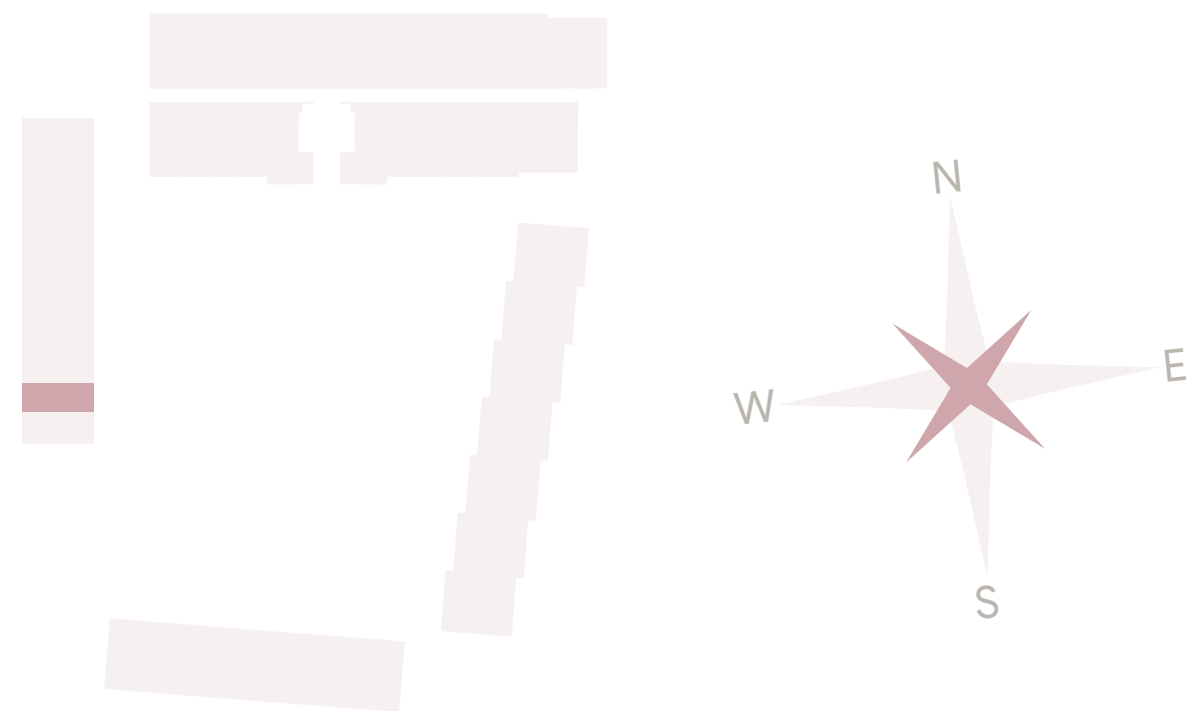
## DESIGNER SUITE

N - G - GARDEN HOME - 2  
GROUND FLOOR

### COMMUNITY

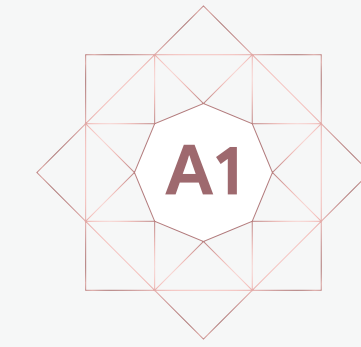
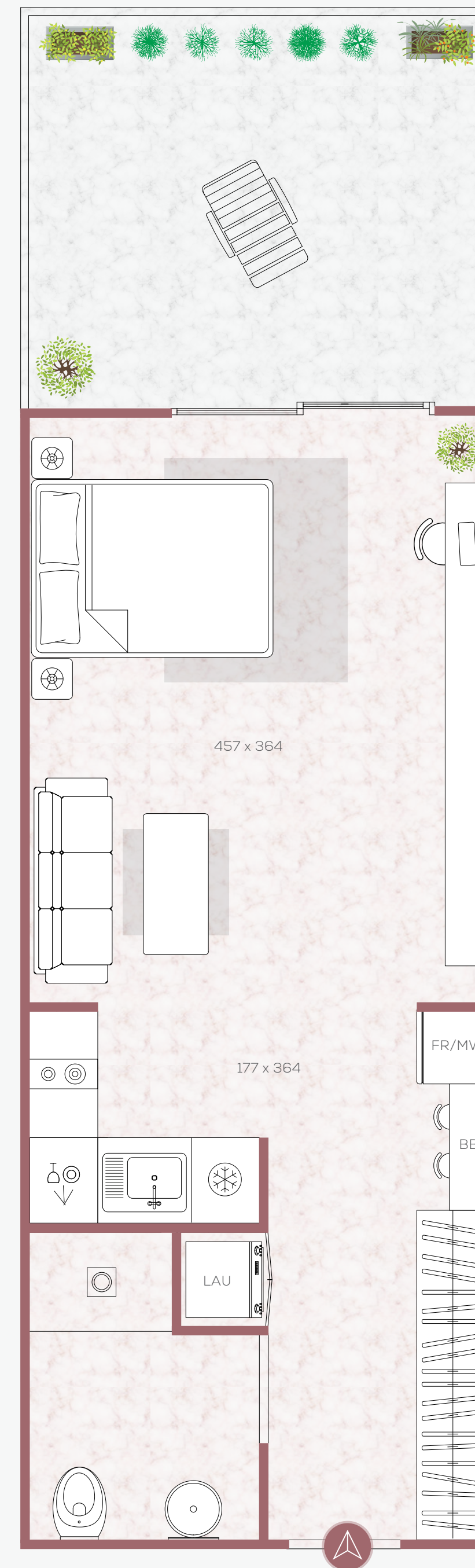
Suite	381 SQF	35.35 SQM
Terrace	139 SQF	12.89 SQM
Total Area	519 SQF	48.24 SQM

#### KEYPLAN



#### DISCLAIMER

All drawings and dimensions are approximate. Drawings are not to scale and are subject to change without notice. The developer reserves the right to make revisions. The units are taken from the typical floor of the building and columns may vary in size depending on the floor level. The furnishings and accessories shown are for representation only. The length and width of the unit and balcony varies depending on which floor and which orientation the unit is located within the building to comply with the building authority regulations.



# THE AUTOGRAPH

BY GREEN GROUP

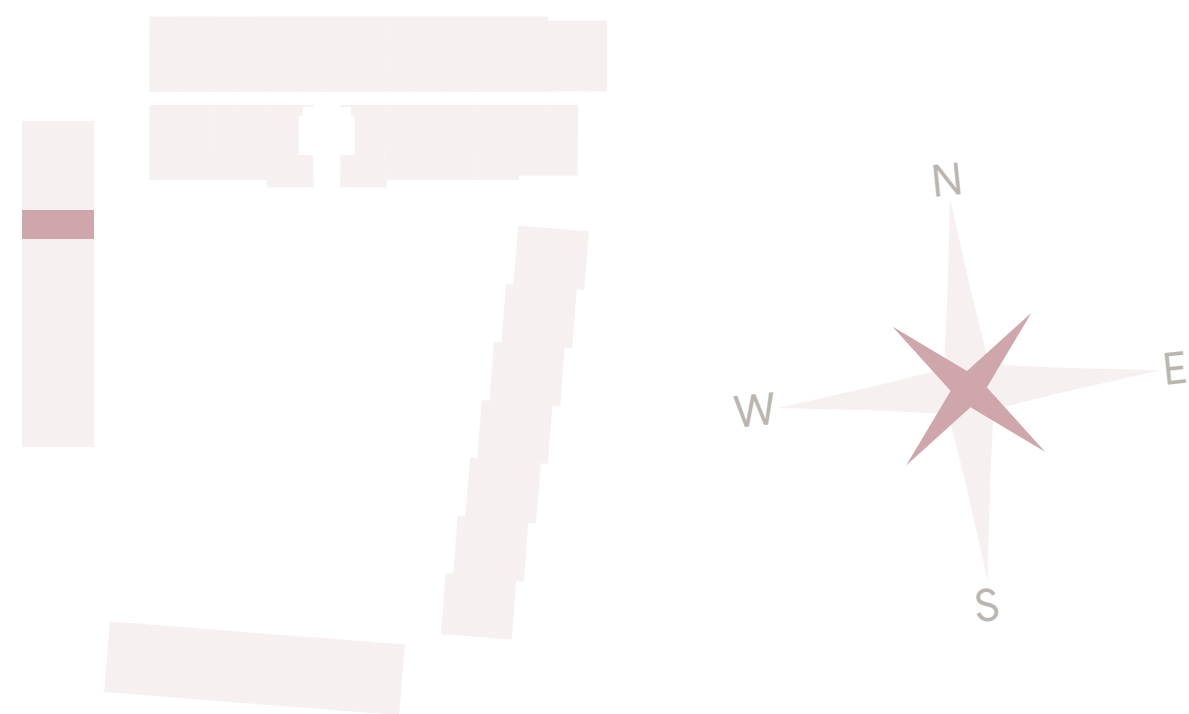
## DESIGNER SUITE

N - G - GARDEN HOME - 8  
GROUND FLOOR

### COMMUNITY

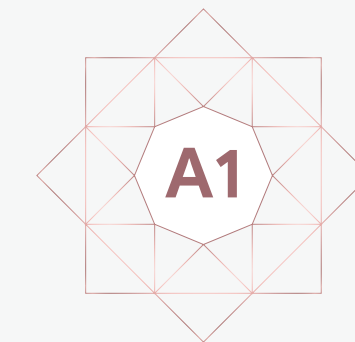
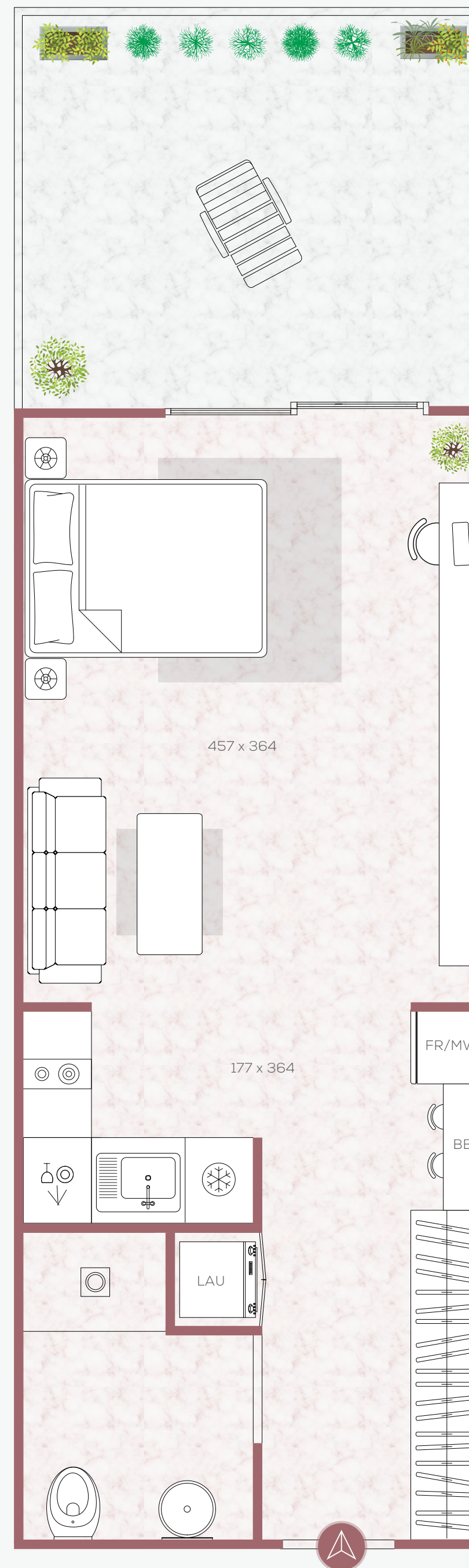
Suite	380 SQF	35.30 SQM
Terrace	173 SQF	16.09 SQM
Total Area	553 SQF	51.39 SQM

KEYPLAN



#### DISCLAIMER

All drawings and dimensions are approximate. Drawings are not to scale and are subject to change without notice. The developer reserves the right to make revisions. The units are taken from the typical floor of the building and columns may vary in size depending on the floor level. The furnishings and accessories shown are for representation only. The length and width of the unit and balcony varies depending on which floor and which orientation the unit is located within the building to comply with the building authority regulations.



# THE AUTOGRAPH

BY GREEN GROUP

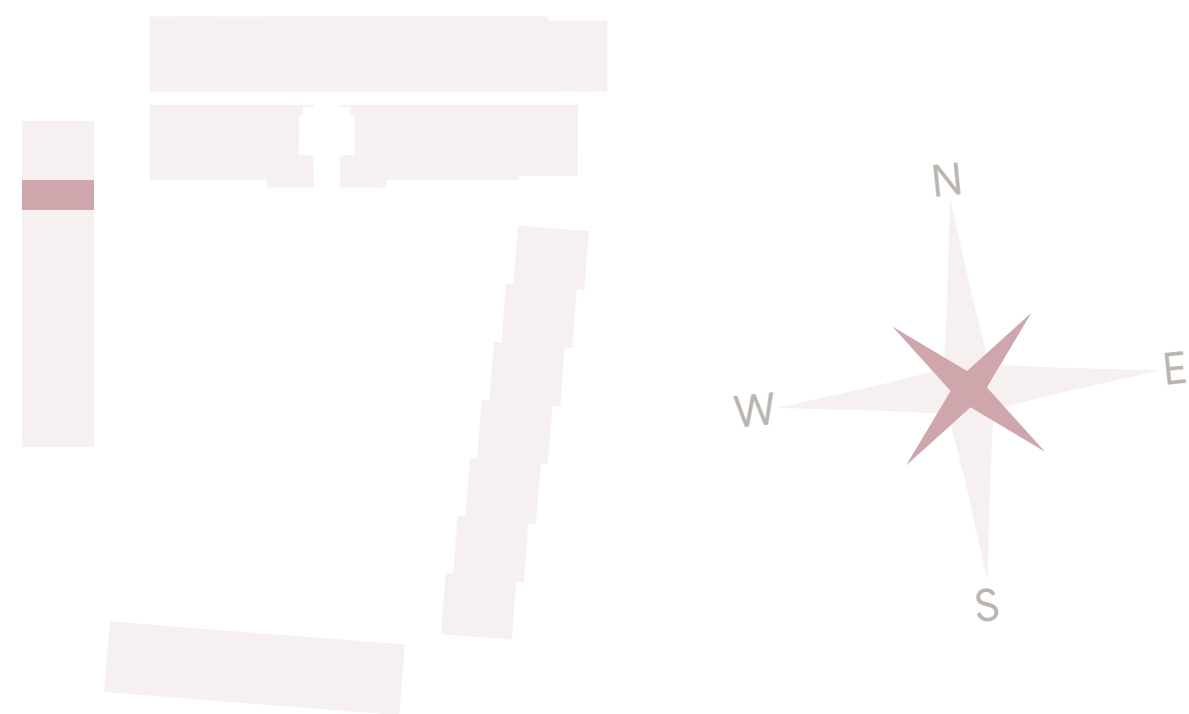
## DESIGNER SUITE

N - G - GARDEN HOME - 9  
GROUND FLOOR

### COMMUNITY

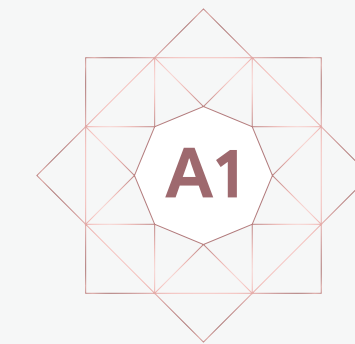
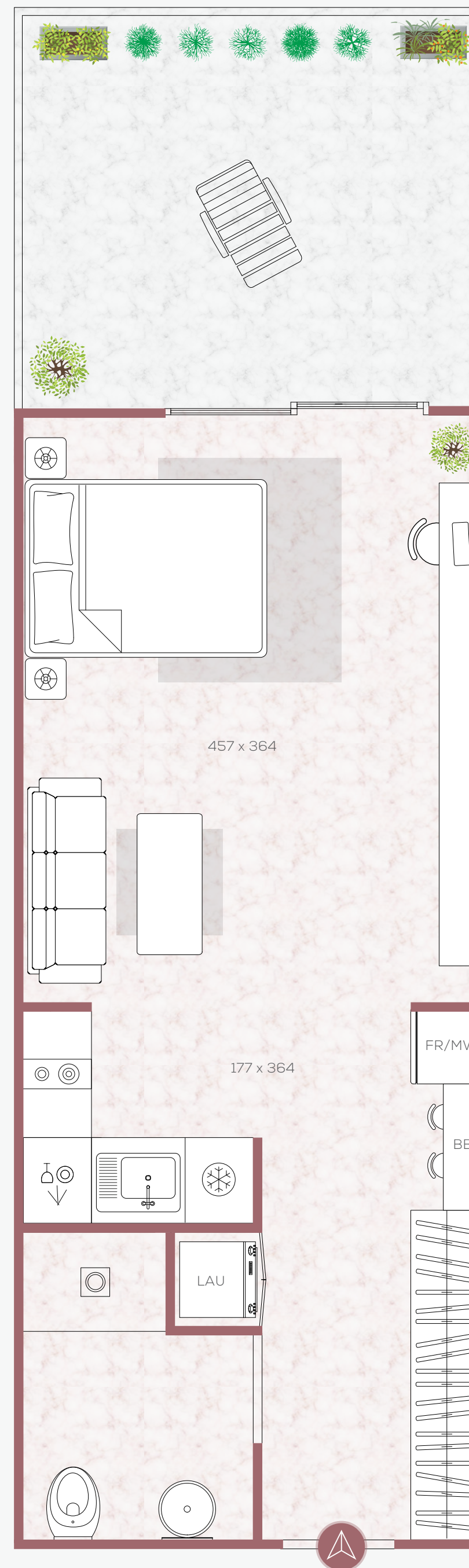
Suite	381 SQF	35.35 SQM
Terrace	185 SQF	17.18 SQM
Total Area	565 SQF	52.53 SQM

KEYPLAN



#### DISCLAIMER

All drawings and dimensions are approximate. Drawings are not to scale and are subject to change without notice. The developer reserves the right to make revisions. The units are taken from the typical floor of the building and columns may vary in size depending on the floor level. The furnishings and accessories shown are for representation only. The length and width of the unit and balcony varies depending on which floor and which orientation the unit is located within the building to comply with the building authority regulations.



# THE AUTOGRAPH

BY GREEN GROUP

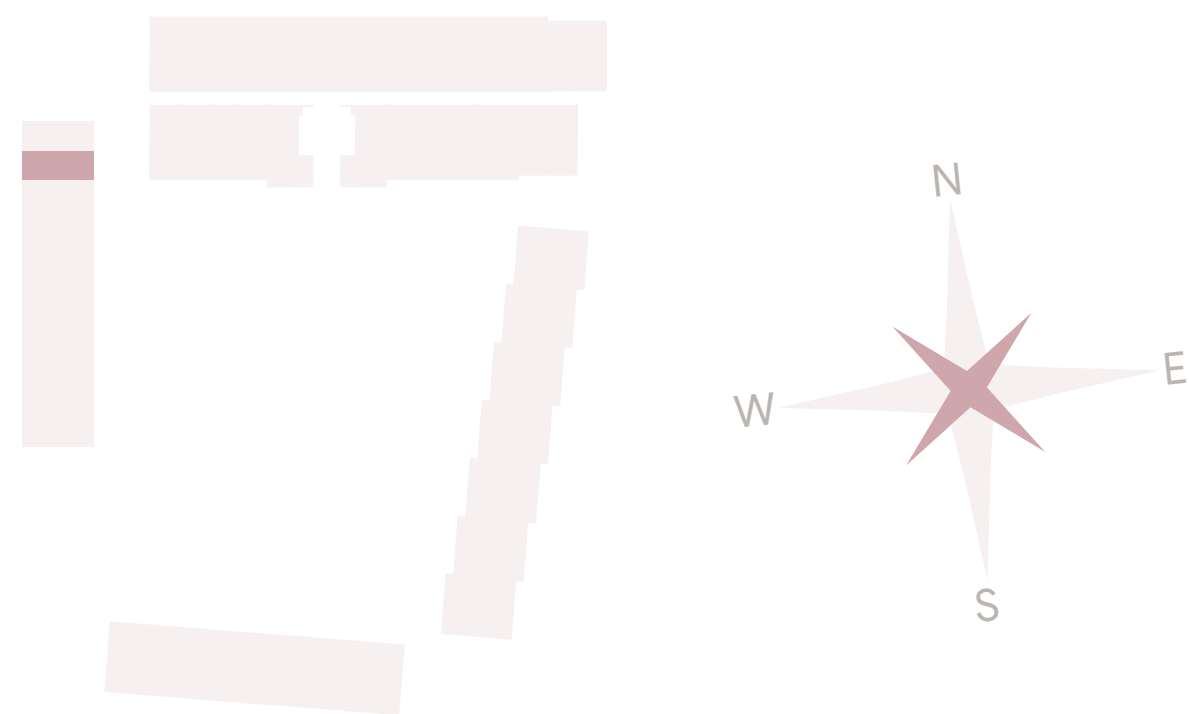
## DESIGNER SUITE

N - G - GARDEN HOME - 10  
GROUND FLOOR

### COMMUNITY

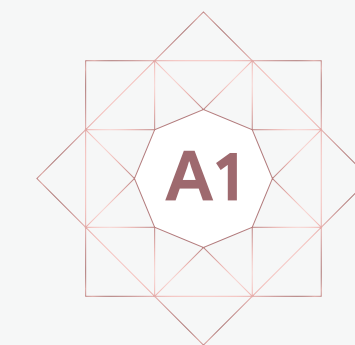
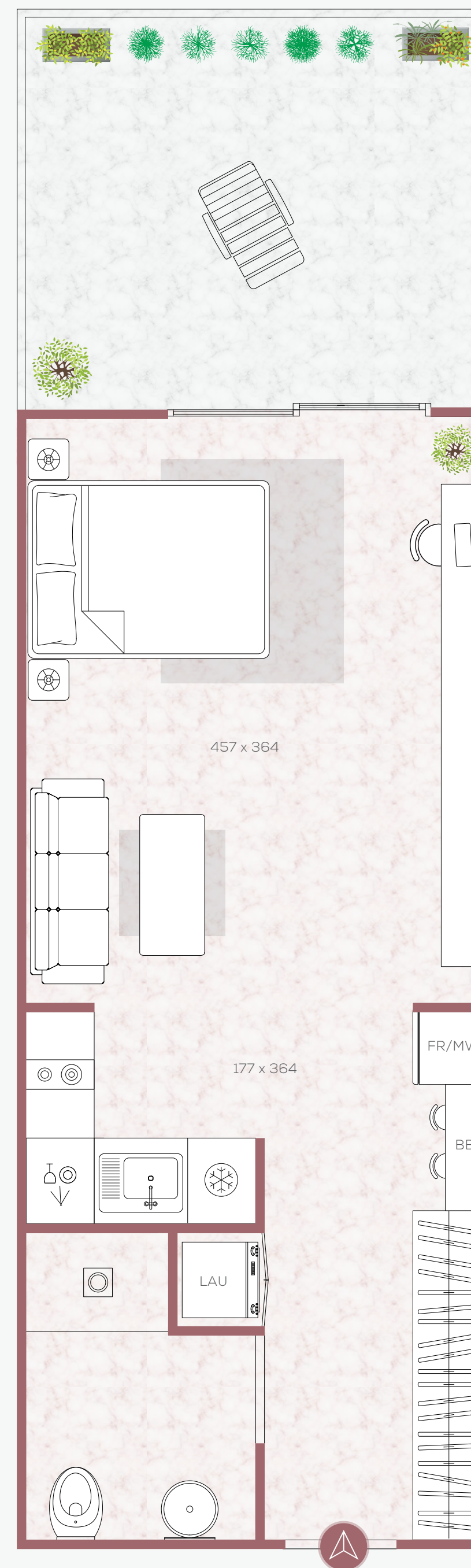
Suite	381 SQF	35.35 SQM
Terrace	166 SQF	15.42 SQM
Total Area	546 SQF	50.77 SQM

#### KEYPLAN



#### DISCLAIMER

All drawings and dimensions are approximate. Drawings are not to scale and are subject to change without notice. The developer reserves the right to make revisions. The units are taken from the typical floor of the building and columns may vary in size depending on the floor level. The furnishings and accessories shown are for representation only. The length and width of the unit and balcony varies depending on which floor and which orientation the unit is located within the building to comply with the building authority regulations.



# THE AUTOGRAPH

BY GREEN GROUP

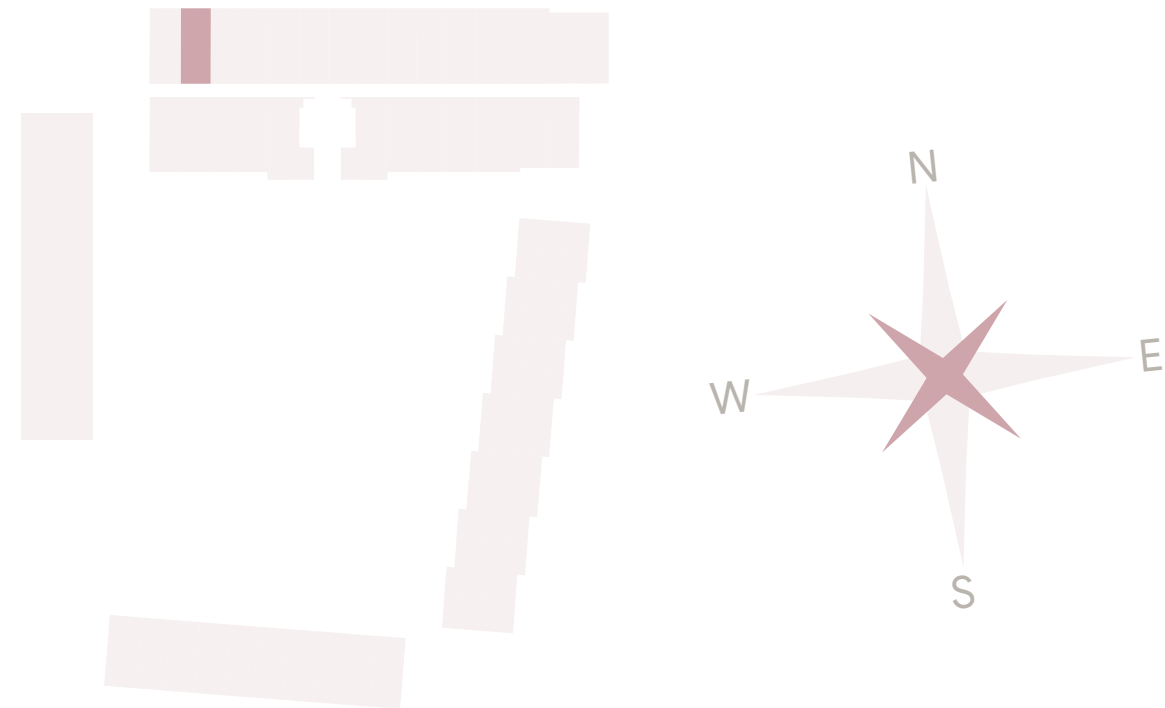
## ONE BEDROOM TOWNHOUSE

N - G - GARDEN HOME - 13  
GROUND FLOOR

### COMMUNITY

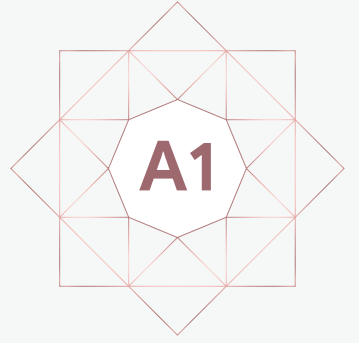
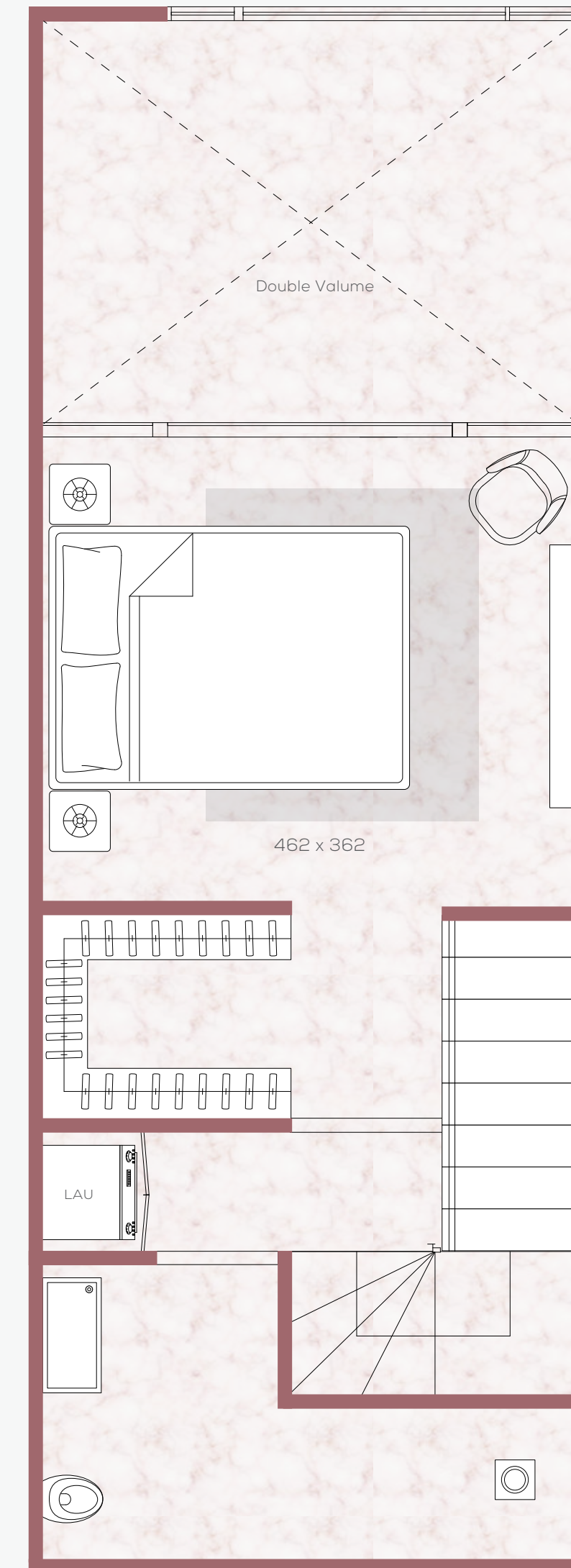
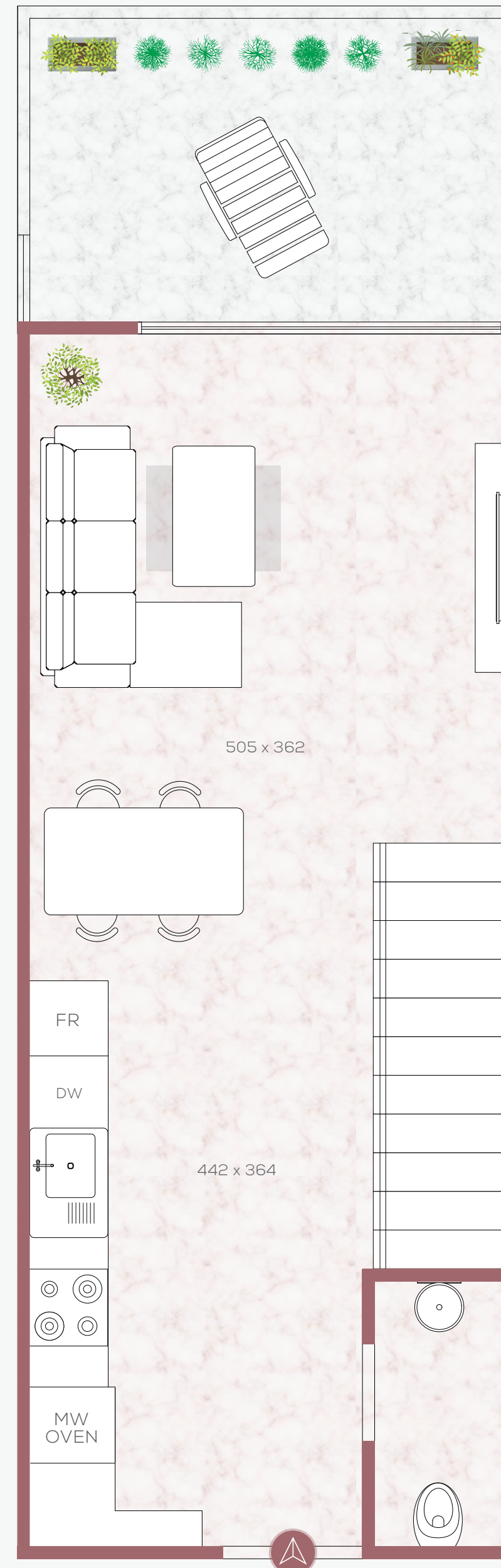
Suite	741 SQF	68.82 SQM
Terrace	112 SQF	10.45 SQM
Total Area	853 SQF	79.27 SQM

### KEYPLAN



### DISCLAIMER

All drawings and dimensions are approximate. Drawings are not to scale and are subject to change without notice. The developer reserves the right to make revisions. The units are taken from the typical floor of the building and columns may vary in size depending on the floor level. The furnishings and accessories shown are for representation only. The length and width of the unit and balcony varies depending on which floor and which orientation the unit is located within the building to comply with the building authority regulations.



# THE AUTOGRAPH

BY GREEN GROUP

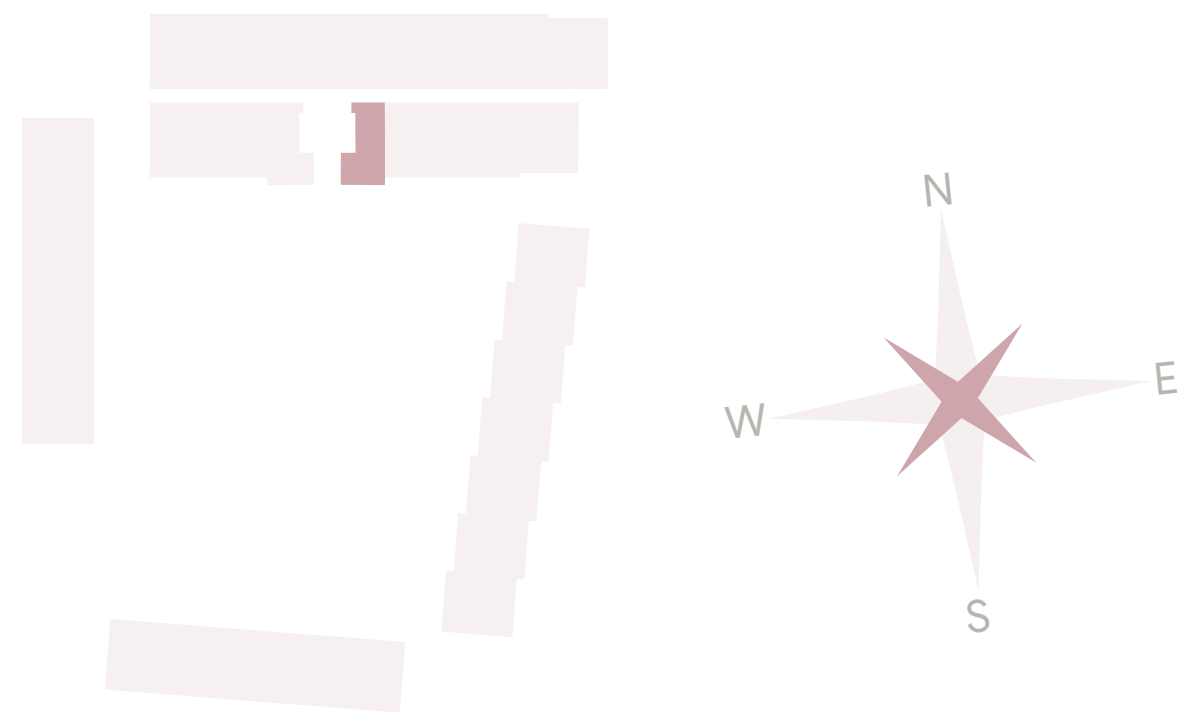
## TWO BEDROOM SKY VILLA

N - G - Garden Home - 33  
GROUND FLOOR

### WALK IN POOL

Suite	1,153 SQF	107.1 SQM
Terrace	246 SQF	22.81 SQM
Total Area	1,398 SQF	129.9 SQM

#### KEYPLAN



#### DISCLAIMER

All drawings and dimensions are approximate. Drawings are not to scale and are subject to change without notice. The developer reserves the right to make revisions. The units are taken from the typical floor of the building and columns may vary in size depending on the floor level. The furnishings and accessories shown are for representation only. The length and width of the unit and balcony varies depending on which floor and which orientation the unit is located within the building to comply with the building authority regulations.





# THE AUTOGRAPH

BY GREEN GROUP

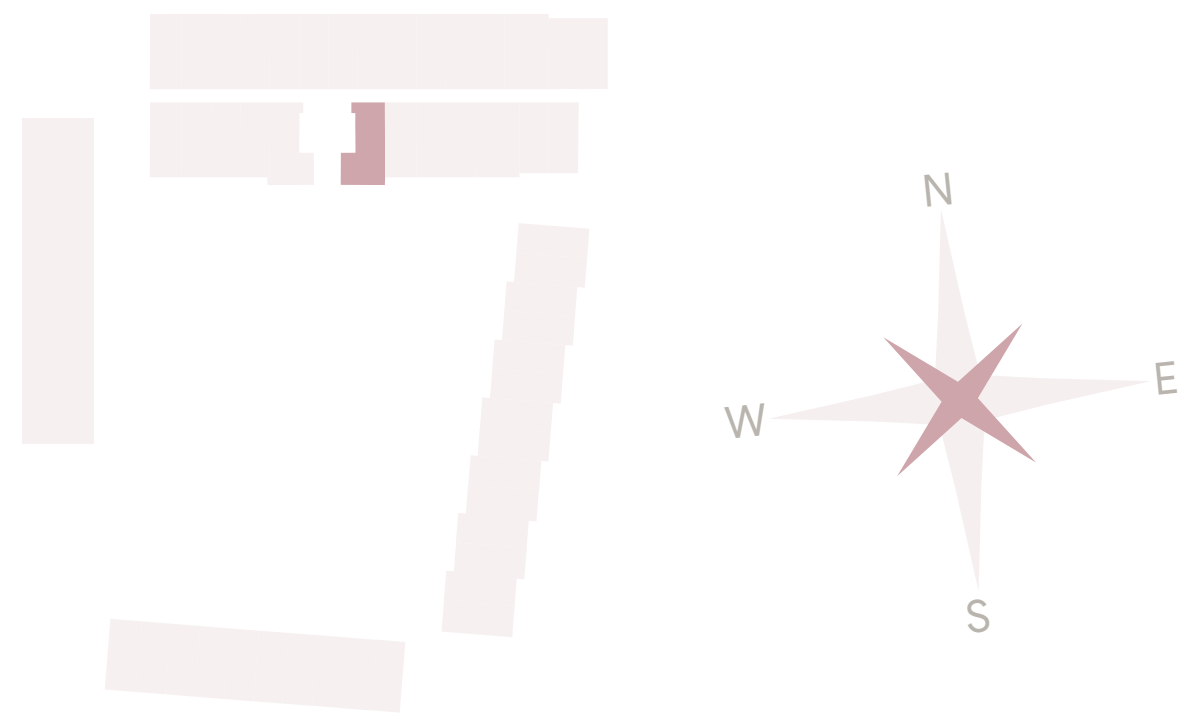
## TWO BEDROOM SKY VILLA

N - G - Garden Home - 33  
GROUND FLOOR

### WALK IN POOL

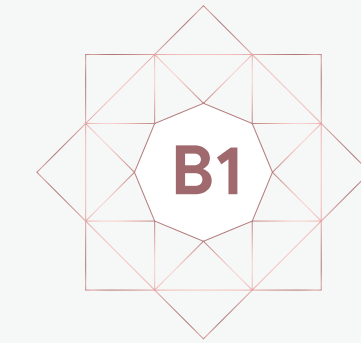
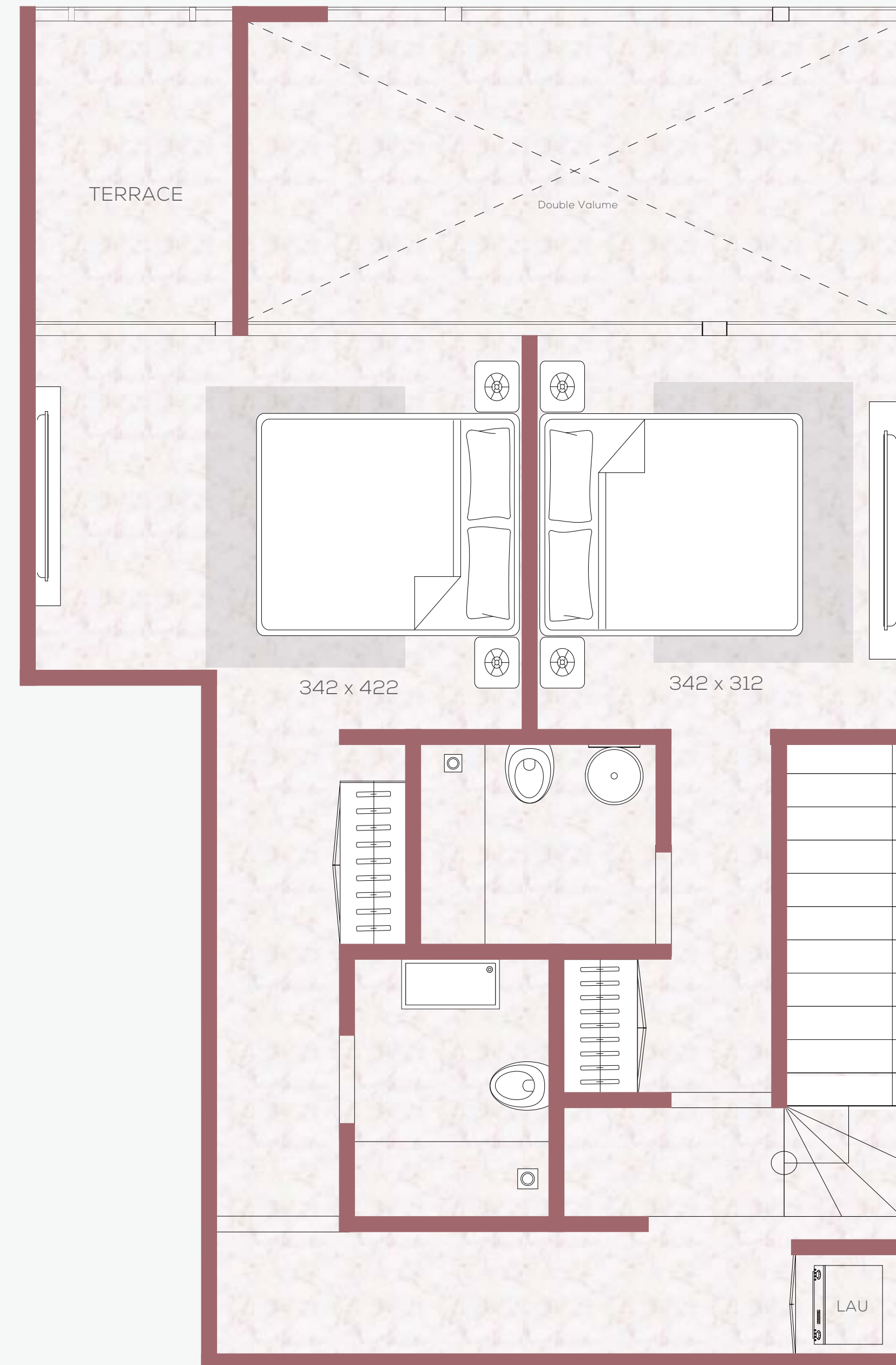
Suite	1,153 SQF	107.1 SQM
Terrace	246 SQF	22.81 SQM
Total Area	1,398 SQF	129.9 SQM

#### KEYPLAN



#### DISCLAIMER

All drawings and dimensions are approximate. Drawings are not to scale and are subject to change without notice. The developer reserves the right to make revisions. The units are taken from the typical floor of the building and columns may vary in size depending on the floor level. The furnishings and accessories shown are for representation only. The length and width of the unit and balcony varies depending on which floor and which orientation the unit is located within the building to comply with the building authority regulations.



# THE AUTOGRAPH

BY GREEN GROUP

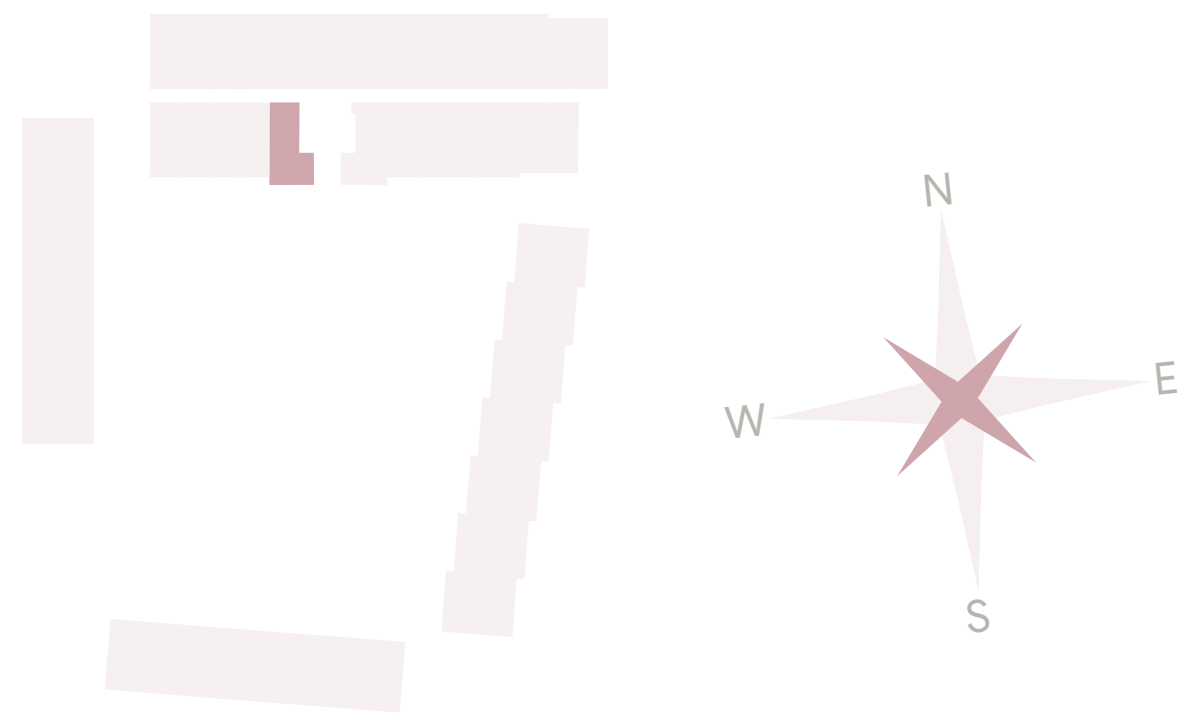
## TWO BEDROOM SKY VILLA

N - G - Garden Home - 34  
GROUND FLOOR

### WALK IN POOL

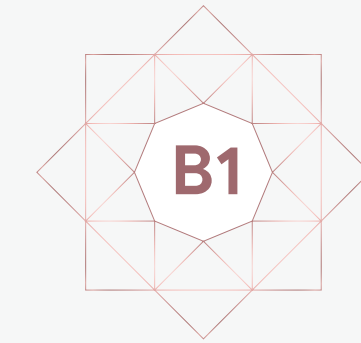
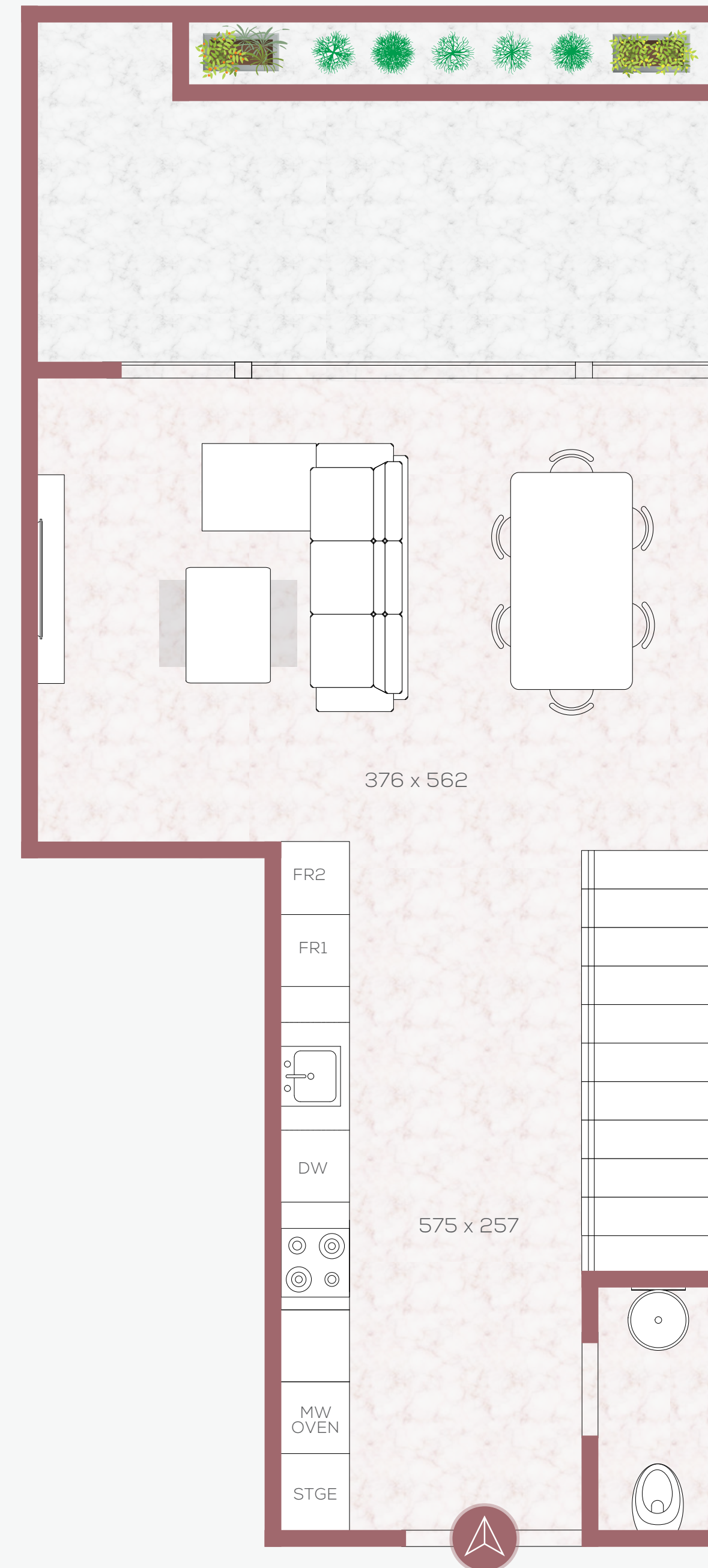
Suite	1,153 SQF	107.1 SQM
Terrace	246 SQF	22.8 SQM
Total Area	1,399 SQF	129.9 SQM

### KEYPLAN



### DISCLAIMER

All drawings and dimensions are approximate. Drawings are not to scale and are subject to change without notice. The developer reserves the right to make revisions. The units are taken from the typical floor of the building and columns may vary in size depending on the floor level. The furnishings and accessories shown are for representation only. The length and width of the unit and balcony varies depending on which floor and which orientation the unit is located within the building to comply with the building authority regulations.



# THE AUTOGRAPH

BY GREEN GROUP

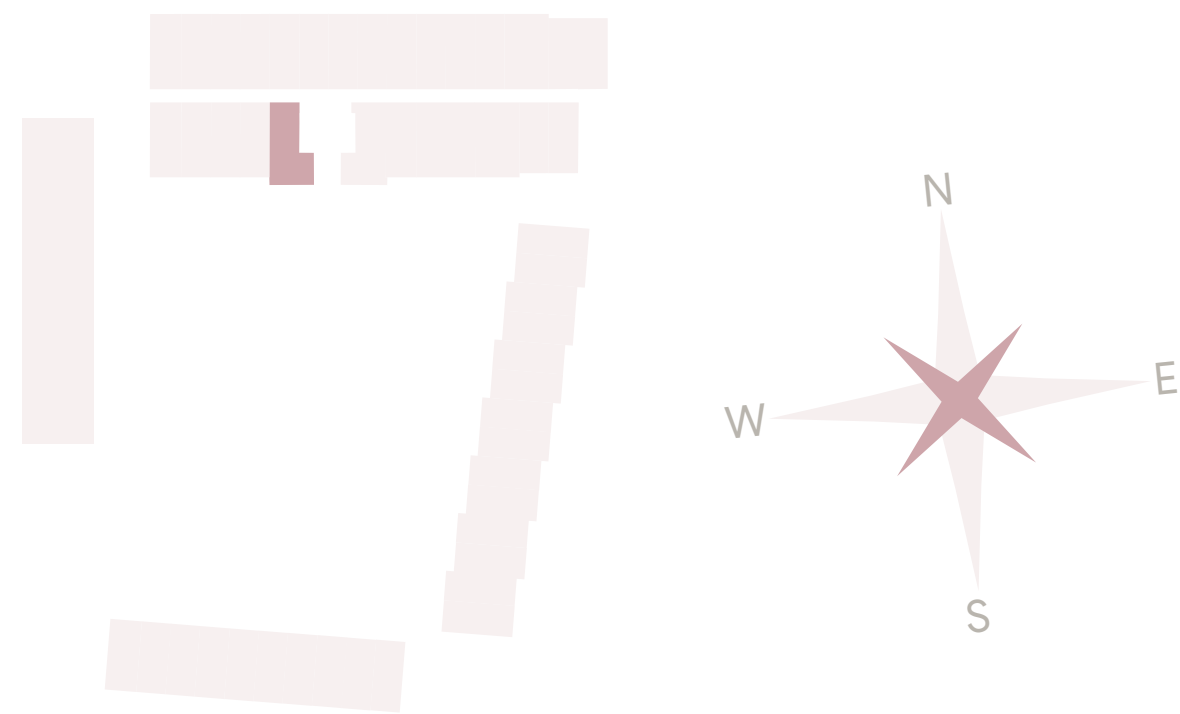
## TWO BEDROOM SKY VILLA

N - G - Garden Home - 34  
GROUND FLOOR

### WALK IN POOL

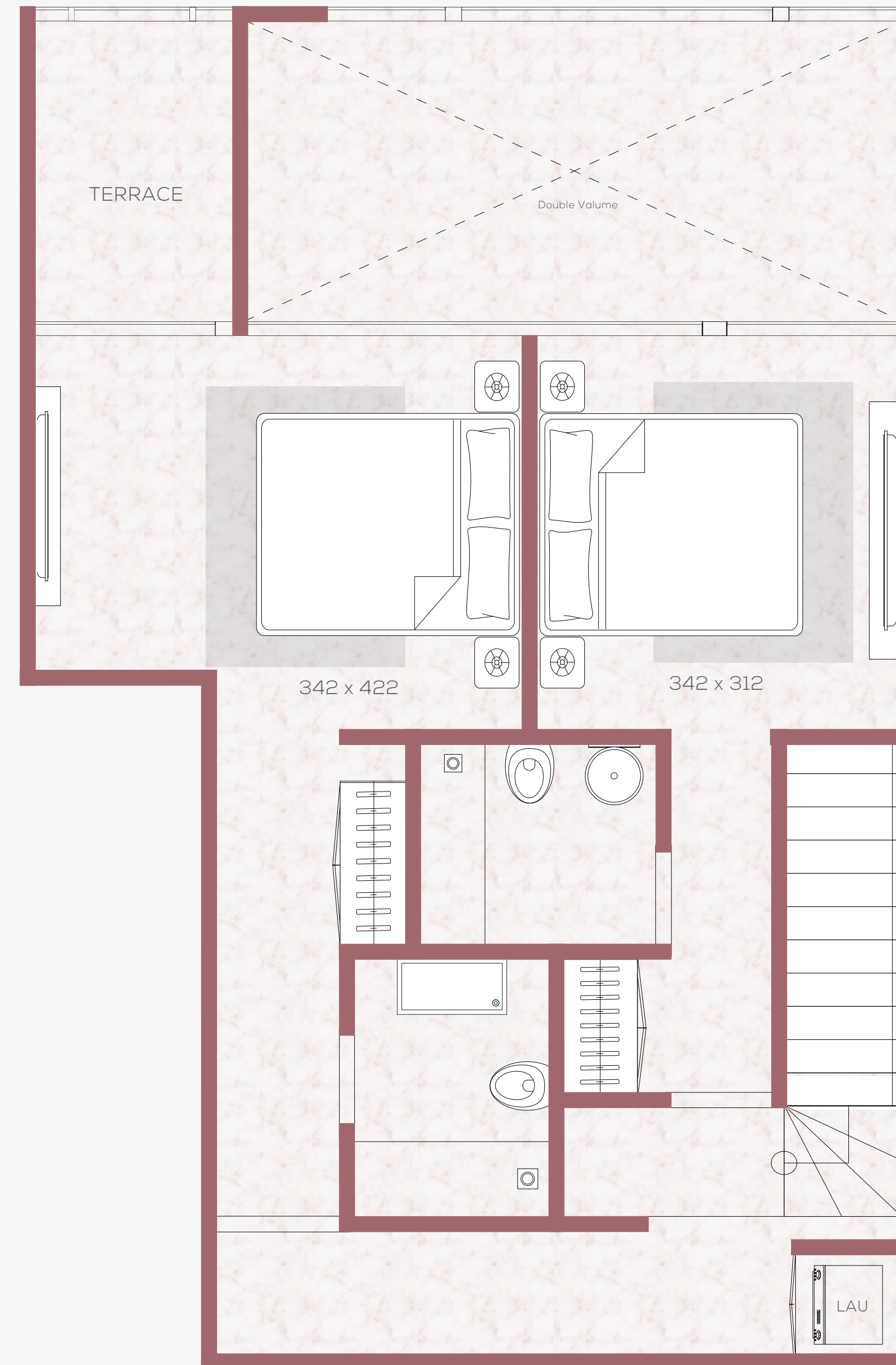
Suite	1,153 SQF	107.1 SQM
Terrace	246 SQF	22.8 SQM
Total Area	1,399 SQF	129.9 SQM

#### KEYPLAN



#### DISCLAIMER

All drawings and dimensions are approximate. Drawings are not to scale and are subject to change without notice. The developer reserves the right to make revisions. The units are taken from the typical floor of the building and columns may vary in size depending on the floor level. The furnishings and accessories shown are for representation only. The length and width of the unit and balcony varies depending on which floor and which orientation the unit is located within the building to comply with the building authority regulations.



# THE AUTOGRAPH

BY GREEN GROUP

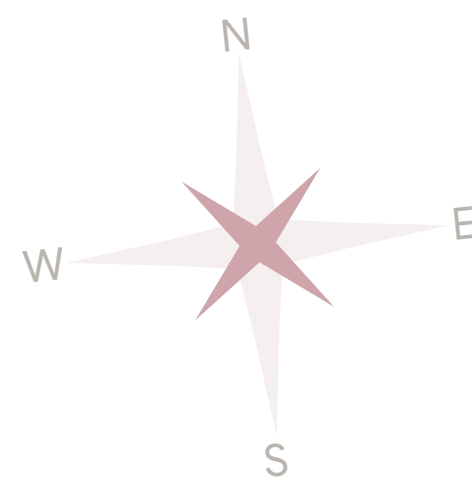
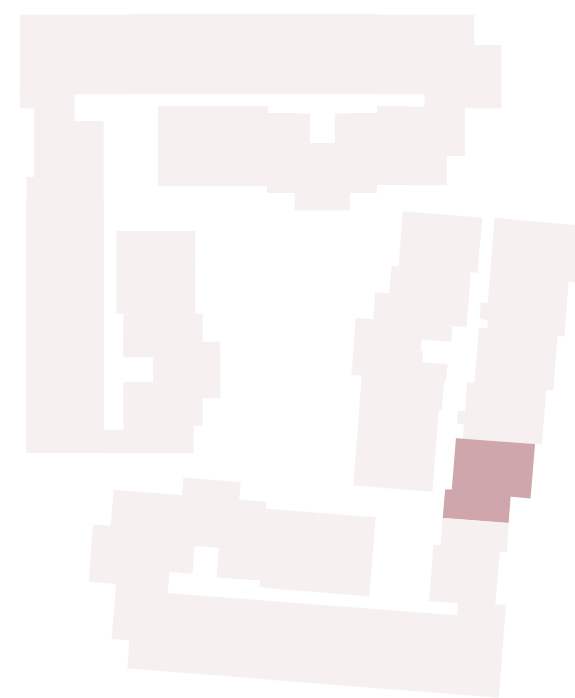
## TWO BEDROOM PENTHOUSE

S - 4 - Terrace Home - 13  
FOURTH FLOOR

### PARK

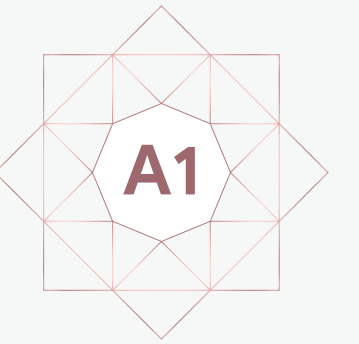
Suite	850 SQF	79.00 SQM
Terrace	458 SQF	42.53 SQM
Total Area	1,308 SQF	121.53 SQM

KEYPLAN



#### DISCLAIMER

All drawings and dimensions are approximate. Drawings are not to scale and are subject to change without notice. The developer reserves the right to make revisions. The units are taken from the typical floor of the building and columns may vary in size depending on the floor level. The furnishings and accessories shown are for representation only. The length and width of the unit and balcony varies depending on which floor and which orientation the unit is located within the building to comply with the building authority regulations.



# THE AUTOGRAPH

BY GREEN GROUP

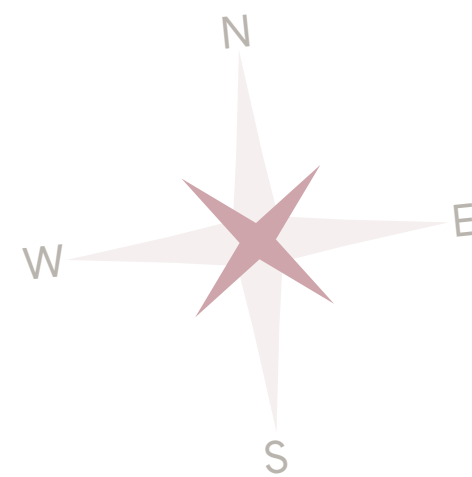
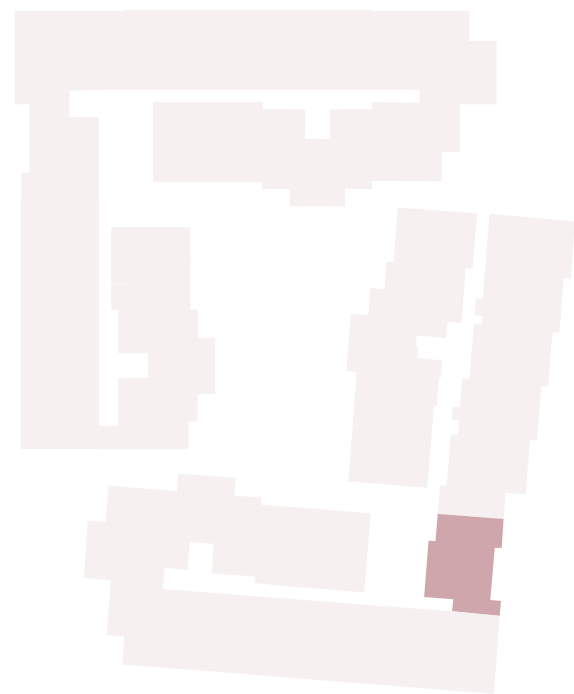
## TWO BEDROOM PENTHOUSE

S - 4 - Terrace Home - 14  
FOURTH FLOOR

### PARK

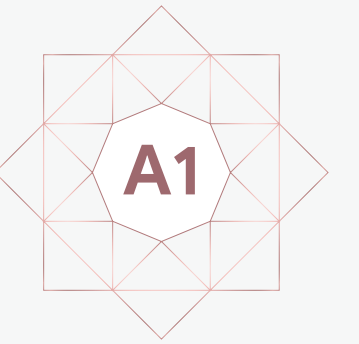
Suite	837 SQF	77.79 SQM
Terrace	468 SQF	43.44 SQM
Total Area	1,305 SQF	121.23 SQM

KEYPLAN



#### DISCLAIMER

All drawings and dimensions are approximate. Drawings are not to scale and are subject to change without notice. The developer reserves the right to make revisions. The units are taken from the typical floor of the building and columns may vary in size depending on the floor level. The furnishings and accessories shown are for representation only. The length and width of the unit and balcony varies depending on which floor and which orientation the unit is located within the building to comply with the building authority regulations.



# THE AUTOGRAPH

BY GREEN GROUP

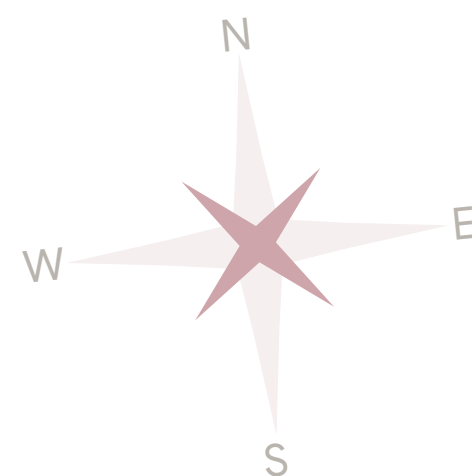
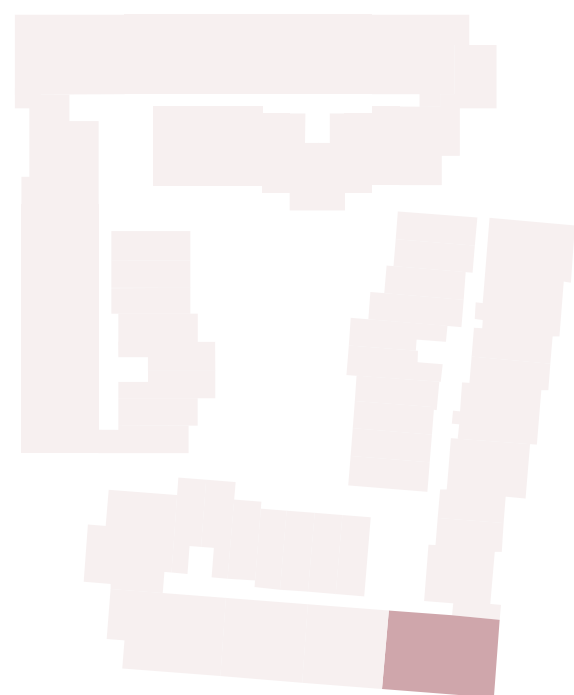
## TWO BEDROOM PENTHOUSE

S - 4 - Terrace Home - 15  
FOURTH FLOOR

### PARK & COMMUNITY

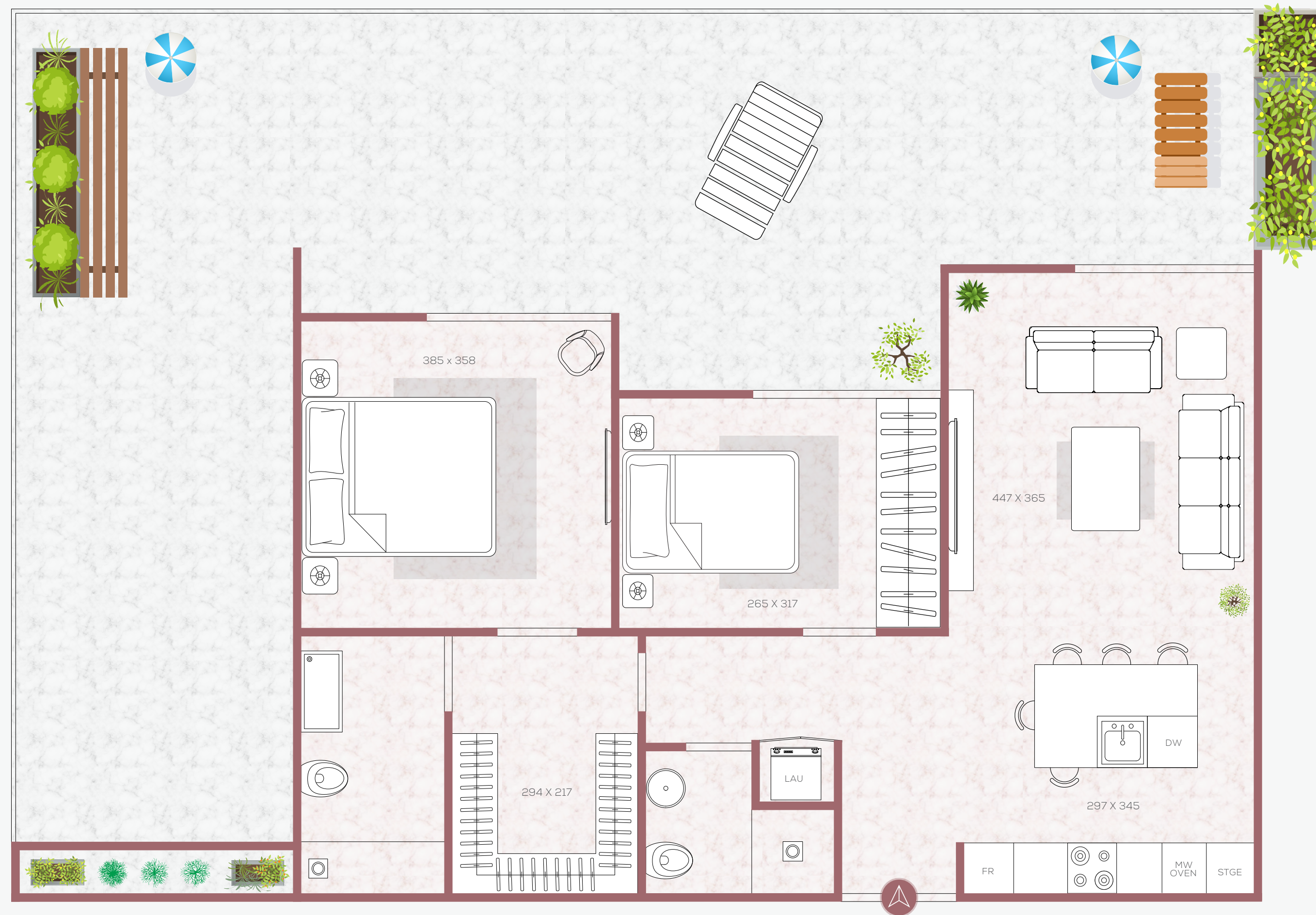
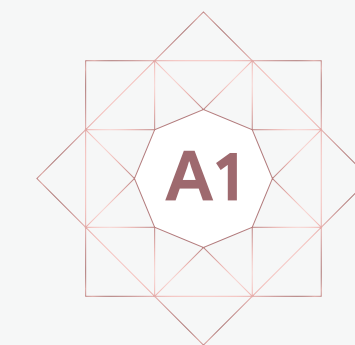
Suite	860 SQF	79.89 SQM
Terrace	988 SQF	91.76 SQM
Total Area	1,848 SQF	171.65 SQM

KEYPLAN



#### DISCLAIMER

All drawings and dimensions are approximate. Drawings are not to scale and are subject to change without notice. The developer reserves the right to make revisions. The units are taken from the typical floor of the building and columns may vary in size depending on the floor level. The furnishings and accessories shown are for representation only. The length and width of the unit and balcony varies depending on which floor and which orientation the unit is located within the building to comply with the building authority regulations.



# THE AUTOGRAPH

BY GREEN GROUP

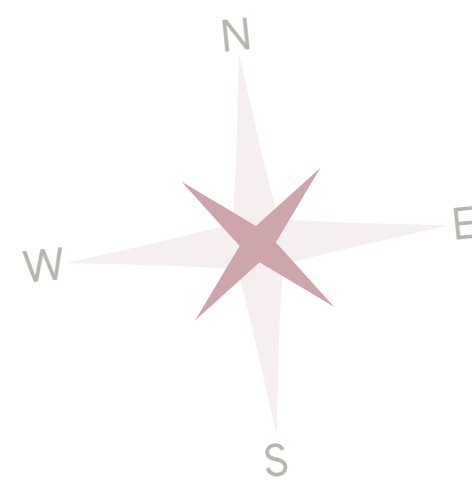
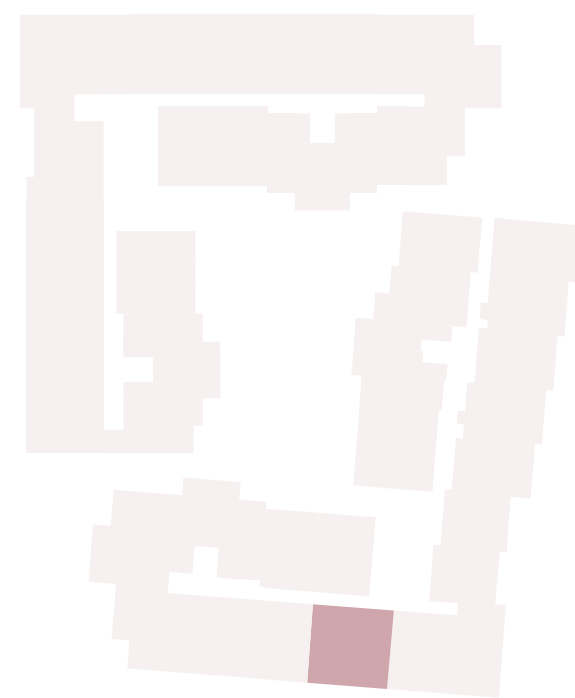
## TWO BEDROOM PENTHOUSE

S - 4 - Terrace Home - 16  
FOURTH FLOOR

### COMMUNITY

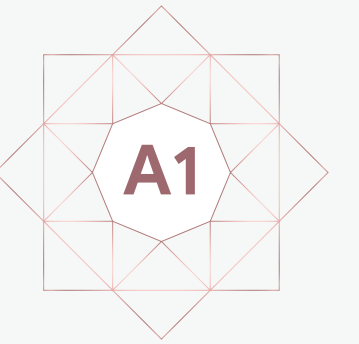
Suite	857 SQF	79.64 SQM
Terrace	514 SQF	47.79 SQM
Total Area	1,372 SQF	127.43 SQM

KEYPLAN



#### DISCLAIMER

All drawings and dimensions are approximate. Drawings are not to scale and are subject to change without notice. The developer reserves the right to make revisions. The units are taken from the typical floor of the building and columns may vary in size depending on the floor level. The furnishings and accessories shown are for representation only. The length and width of the unit and balcony varies depending on which floor and which orientation the unit is located within the building to comply with the building authority regulations.



# THE AUTOGRAPH

BY GREEN GROUP

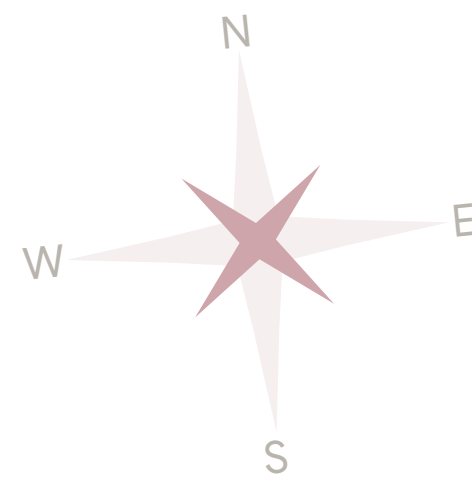
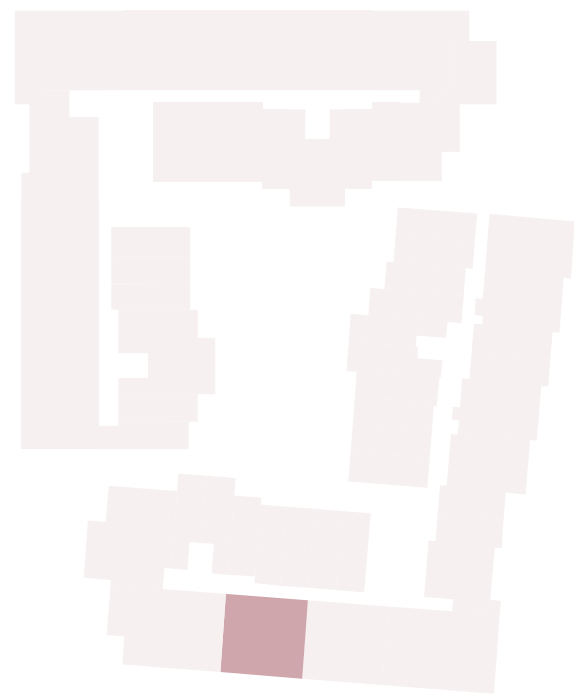
## TWO BEDROOM PENTHOUSE

S - 4 - Terrace Home - 17  
FOURTH FLOOR

### COMMUNITY

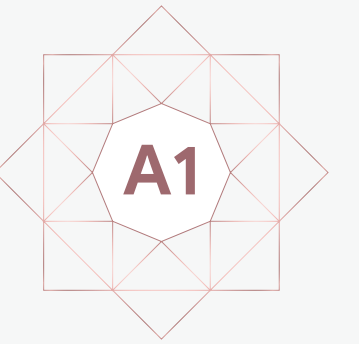
Suite	857 SQF	79.66 SQM
Terrace	519 SQF	48.22 SQM
Total Area	1,376 SQF	127.88 SQM

KEYPLAN



#### DISCLAIMER

All drawings and dimensions are approximate. Drawings are not to scale and are subject to change without notice. The developer reserves the right to make revisions. The units are taken from the typical floor of the building and columns may vary in size depending on the floor level. The furnishings and accessories shown are for representation only. The length and width of the unit and balcony varies depending on which floor and which orientation the unit is located within the building to comply with the building authority regulations.





# THE AUTOGRAPH

BY GREEN GROUP

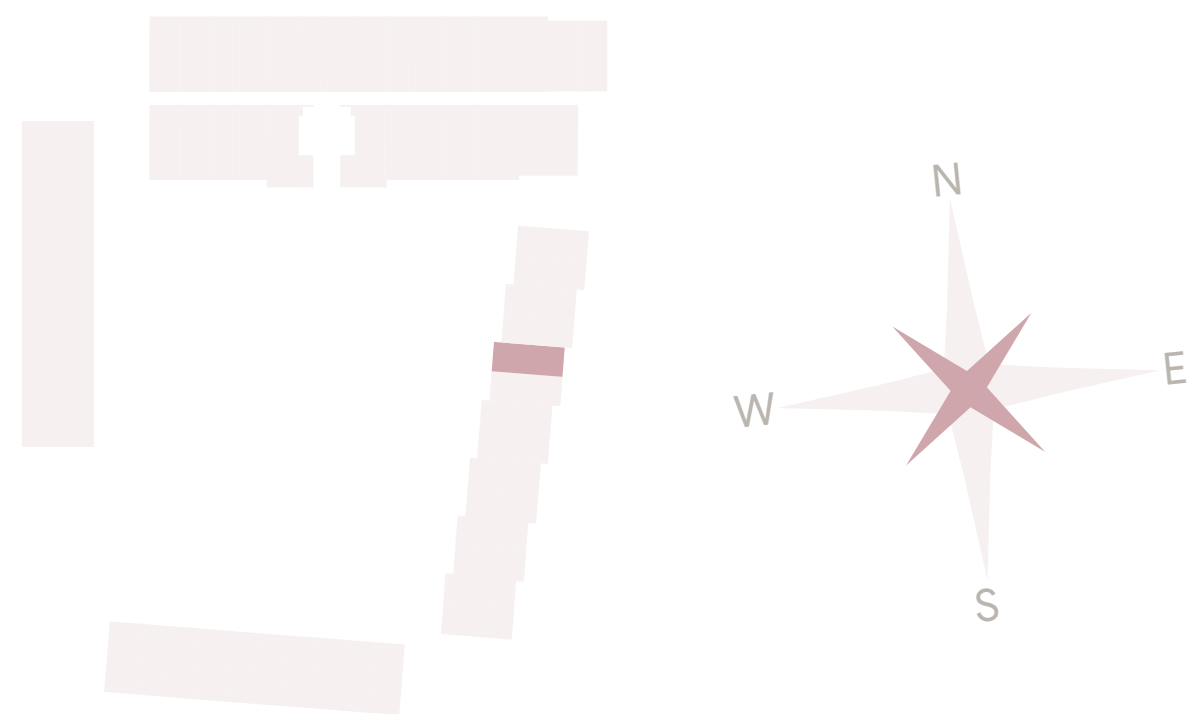
## DESIGNER SUITE

S - G - GARDEN HOME - 5  
GROUND FLOOR

### COMMUNITY

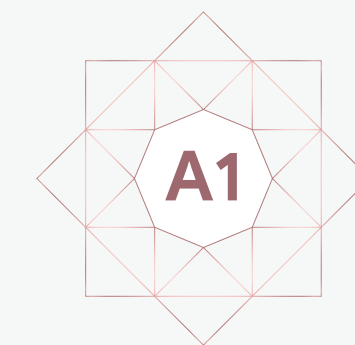
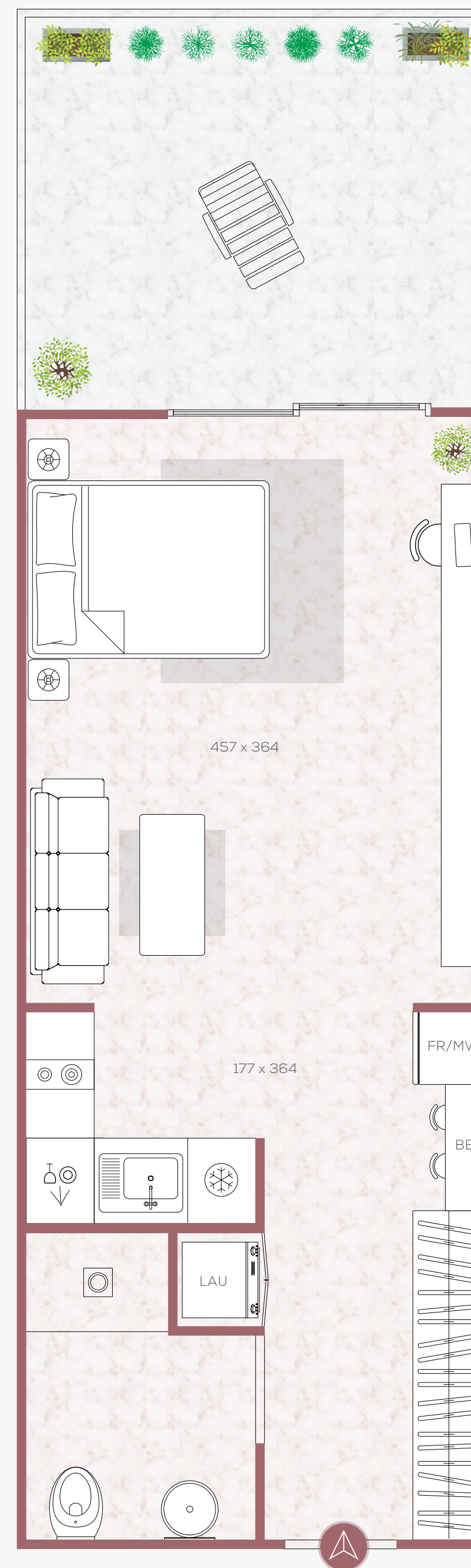
Suite	380 SQF	35.34 SQM
Terrace	182 SQF	16.89 SQM
Total Area	562 SQF	52.23 SQM

#### KEYPLAN



#### DISCLAIMER

All drawings and dimensions are approximate. Drawings are not to scale and are subject to change without notice. The developer reserves the right to make revisions. The units are taken from the typical floor of the building and columns may vary in size depending on the floor level. The furnishings and accessories shown are for representation only. The length and width of the unit and balcony varies depending on which floor and which orientation the unit is located within the building to comply with the building authority regulations.



# THE AUTOGRAPH

BY GREEN GROUP

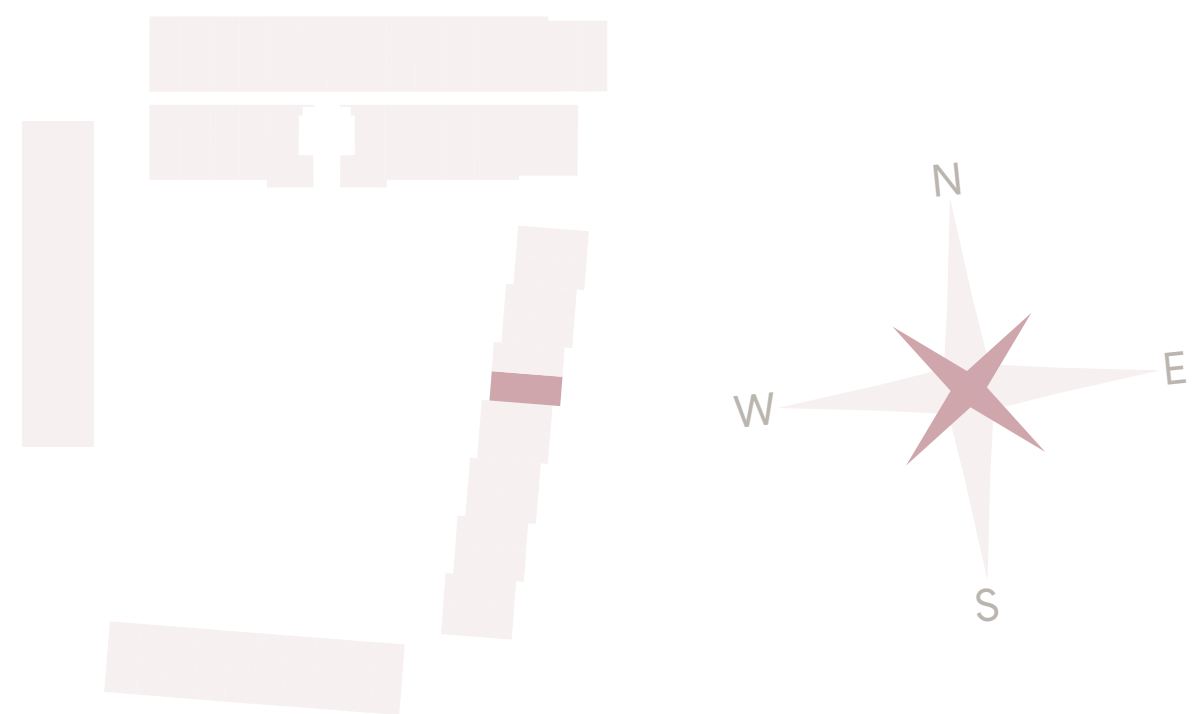
## DESIGNER SUITE

S - G - GARDEN HOME - 6  
GROUND FLOOR

### COMMUNITY

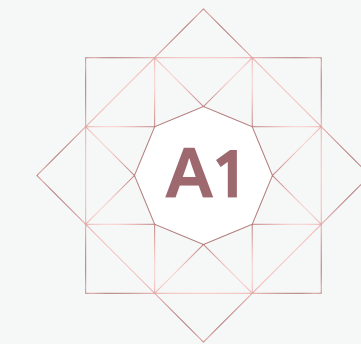
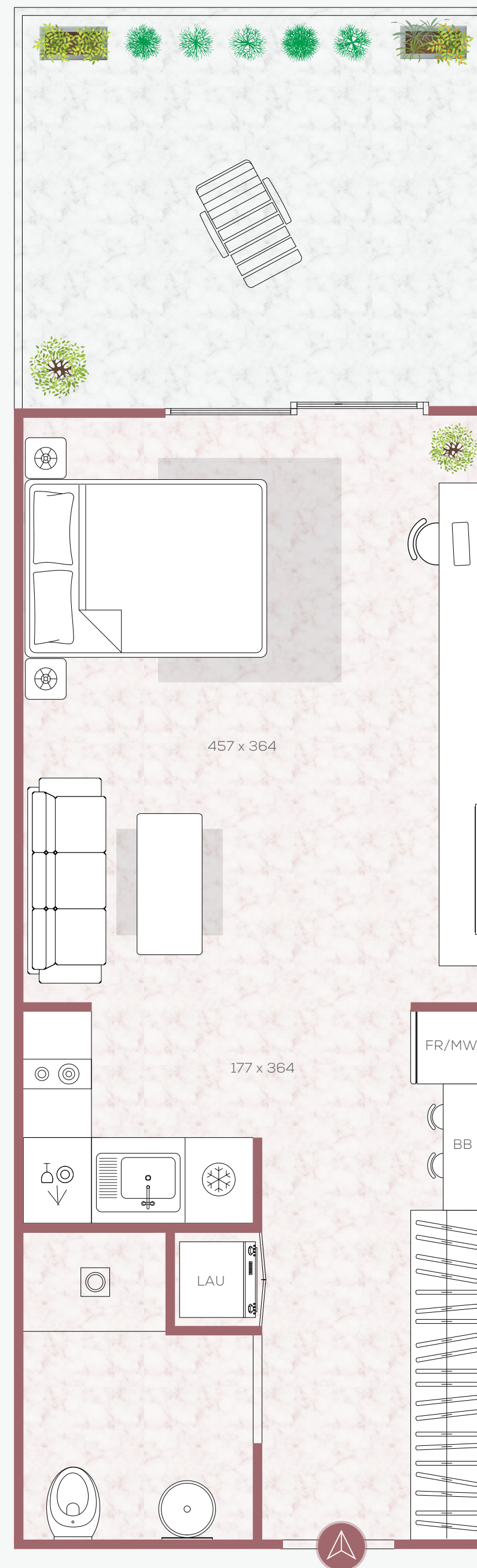
Suite	381 SQF	35.36 SQM
Terrace	172 SQF	16.02 SQM
Total Area	553 SQF	51.38 SQM

#### KEYPLAN



#### DISCLAIMER

All drawings and dimensions are approximate. Drawings are not to scale and are subject to change without notice. The developer reserves the right to make revisions. The units are taken from the typical floor of the building and columns may vary in size depending on the floor level. The furnishings and accessories shown are for representation only. The length and width of the unit and balcony varies depending on which floor and which orientation the unit is located within the building to comply with the building authority regulations.



# THE AUTOGRAPH

BY GREEN GROUP

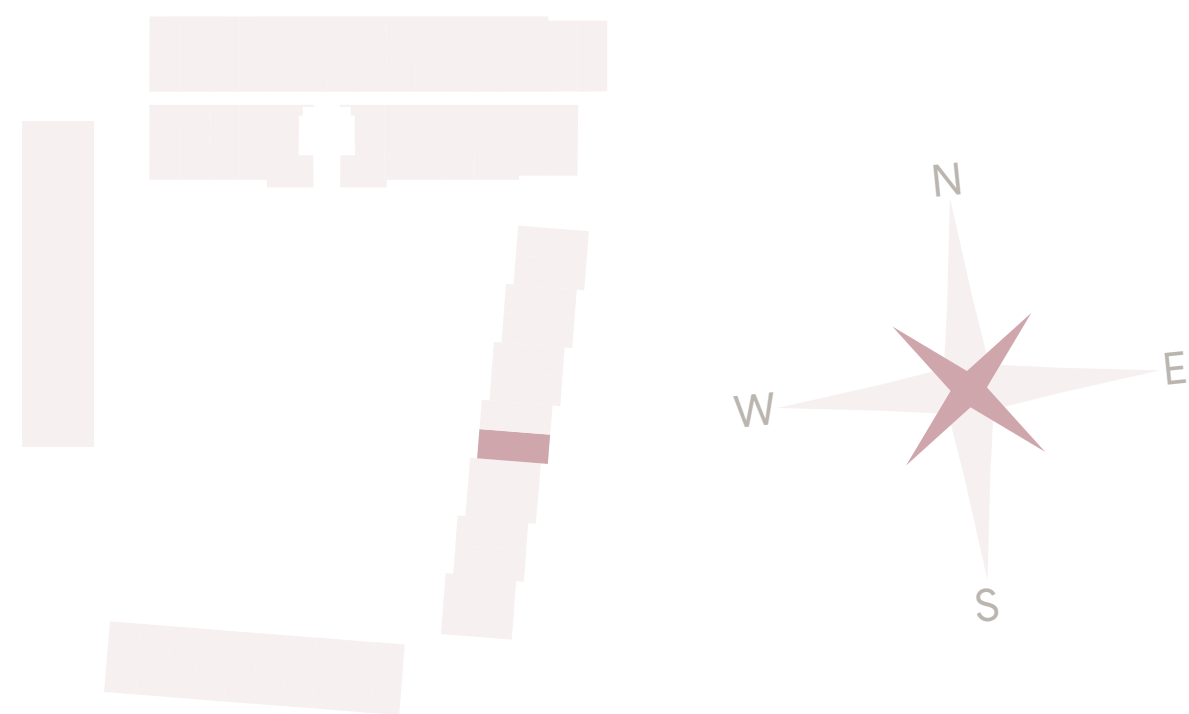
## DESIGNER SUITE

S - G - GARDEN HOME - 8  
GROUND FLOOR

### COMMUNITY

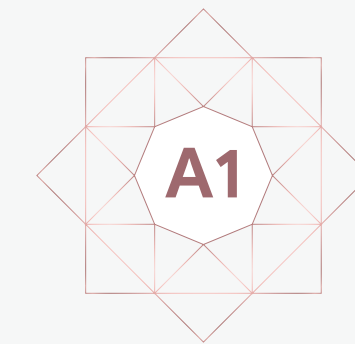
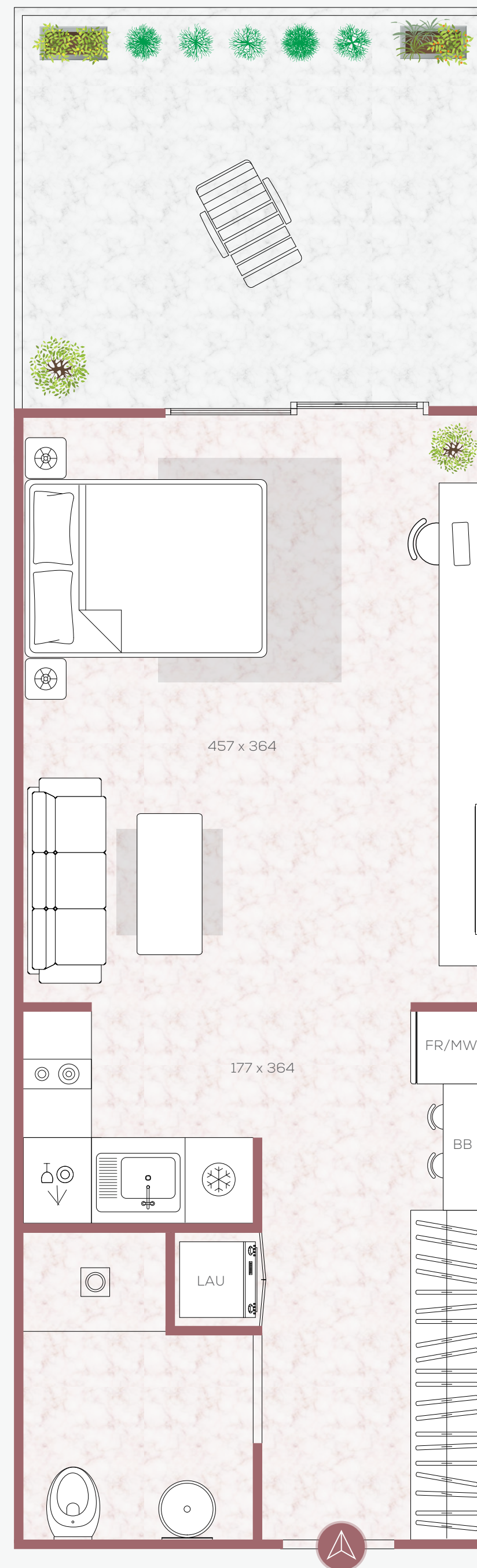
Suite	381 SQF	35.36 SQM
Terrace	184 SQF	17.13 SQM
Total Area	565 SQF	52.49 SQM

#### KEYPLAN



#### DISCLAIMER

All drawings and dimensions are approximate. Drawings are not to scale and are subject to change without notice. The developer reserves the right to make revisions. The units are taken from the typical floor of the building and columns may vary in size depending on the floor level. The furnishings and accessories shown are for representation only. The length and width of the unit and balcony varies depending on which floor and which orientation the unit is located within the building to comply with the building authority regulations.



# THE AUTOGRAPH

BY GREEN GROUP

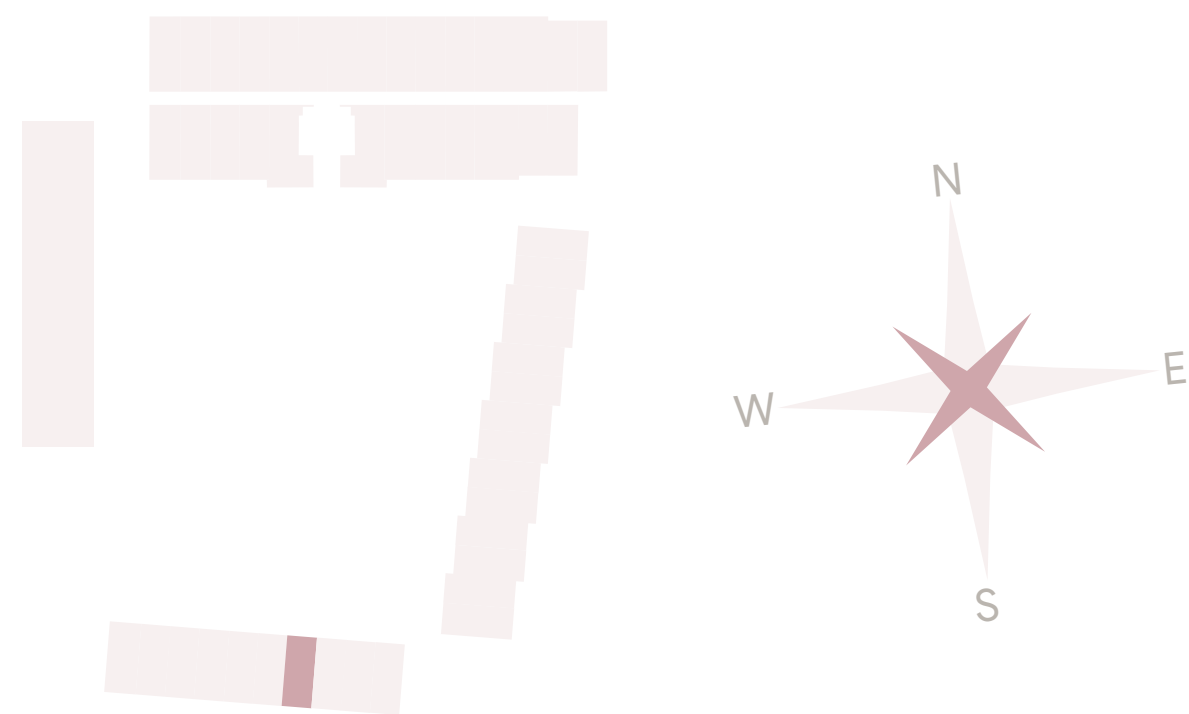
## DESIGNER SUITE

S - G - GARDEN HOME - 18  
GROUND FLOOR

### COMMUNITY

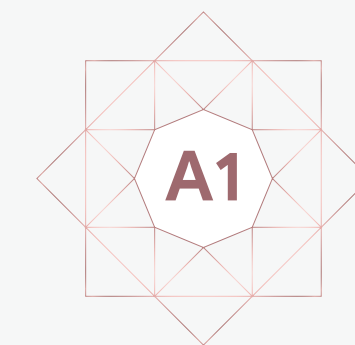
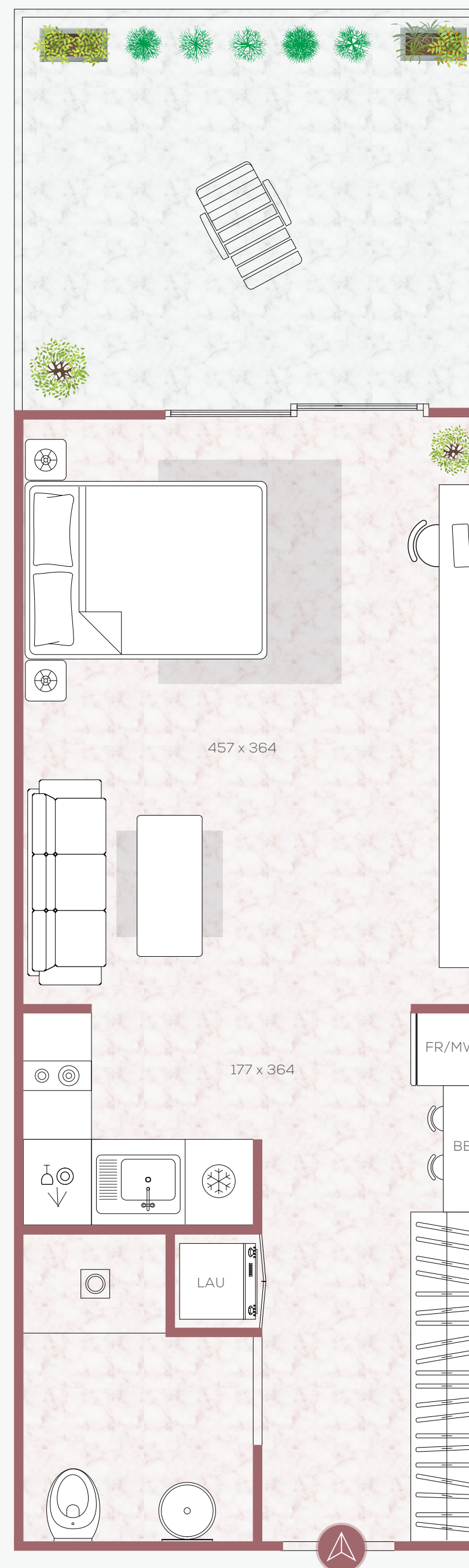
Suite	381 SQF	35.35 SQM
Terrace	115 SQF	10.65 SQM
Total Area	495 SQF	46.00 SQM

#### KEYPLAN



#### DISCLAIMER

All drawings and dimensions are approximate. Drawings are not to scale and are subject to change without notice. The developer reserves the right to make revisions. The units are taken from the typical floor of the building and columns may vary in size depending on the floor level. The furnishings and accessories shown are for representation only. The length and width of the unit and balcony varies depending on which floor and which orientation the unit is located within the building to comply with the building authority regulations.



# THE AUTOGRAPH

BY GREEN GROUP

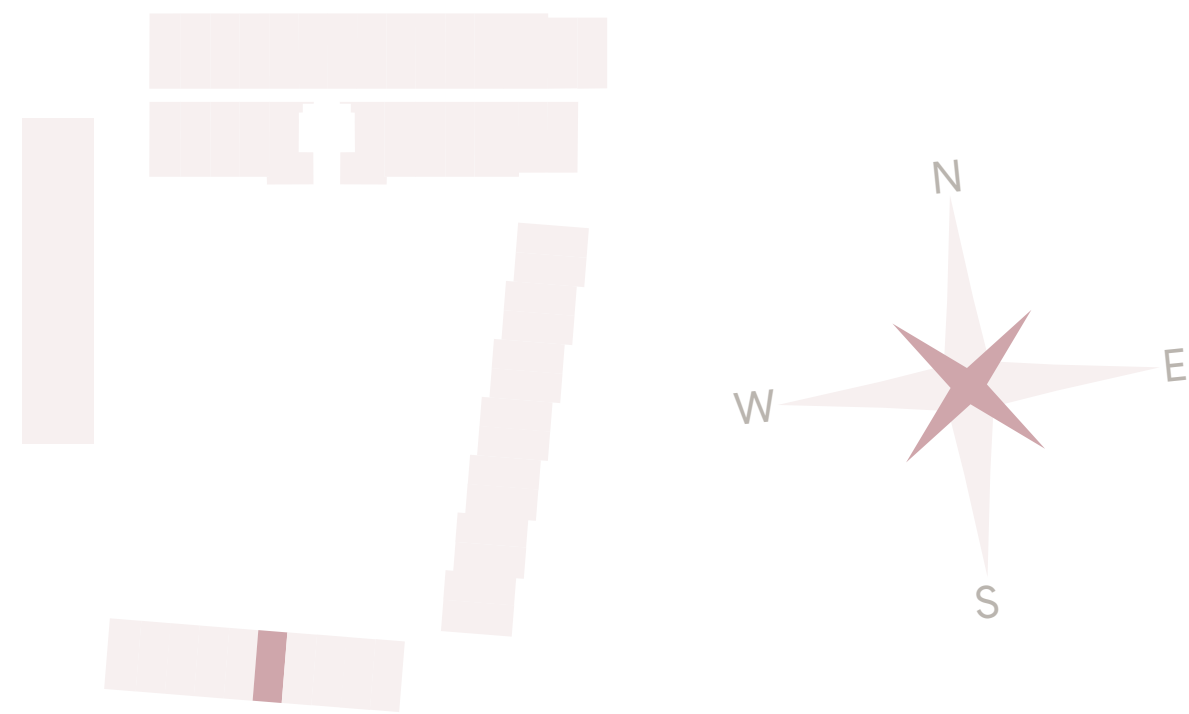
## DESIGNER SUITE

S - G - GARDEN HOME - 19  
GROUND FLOOR

### COMMUNITY

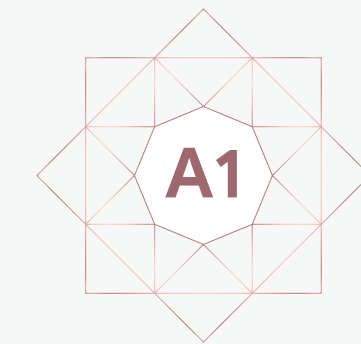
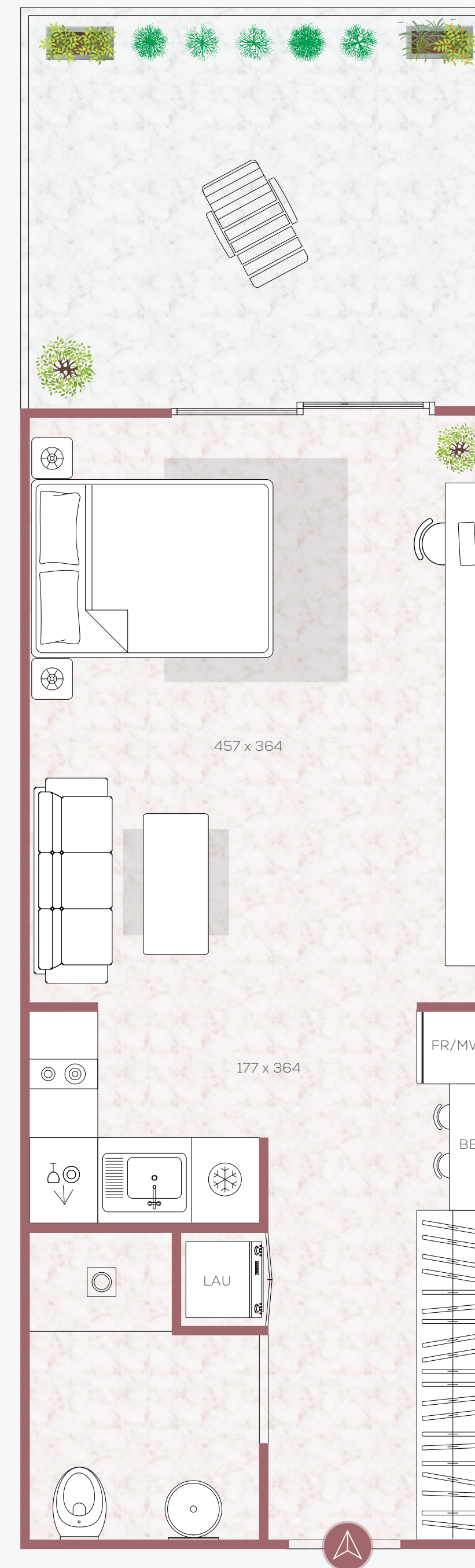
Suite	378 SQF	35.14 SQM
Terrace	113 SQF	10.51 SQM
Total Area	491 SQF	45.65 SQM

#### KEYPLAN



#### DISCLAIMER

All drawings and dimensions are approximate. Drawings are not to scale and are subject to change without notice. The developer reserves the right to make revisions. The units are taken from the typical floor of the building and columns may vary in size depending on the floor level. The furnishings and accessories shown are for representation only. The length and width of the unit and balcony varies depending on which floor and which orientation the unit is located within the building to comply with the building authority regulations.



# THE AUTOGRAPH

BY GREEN GROUP

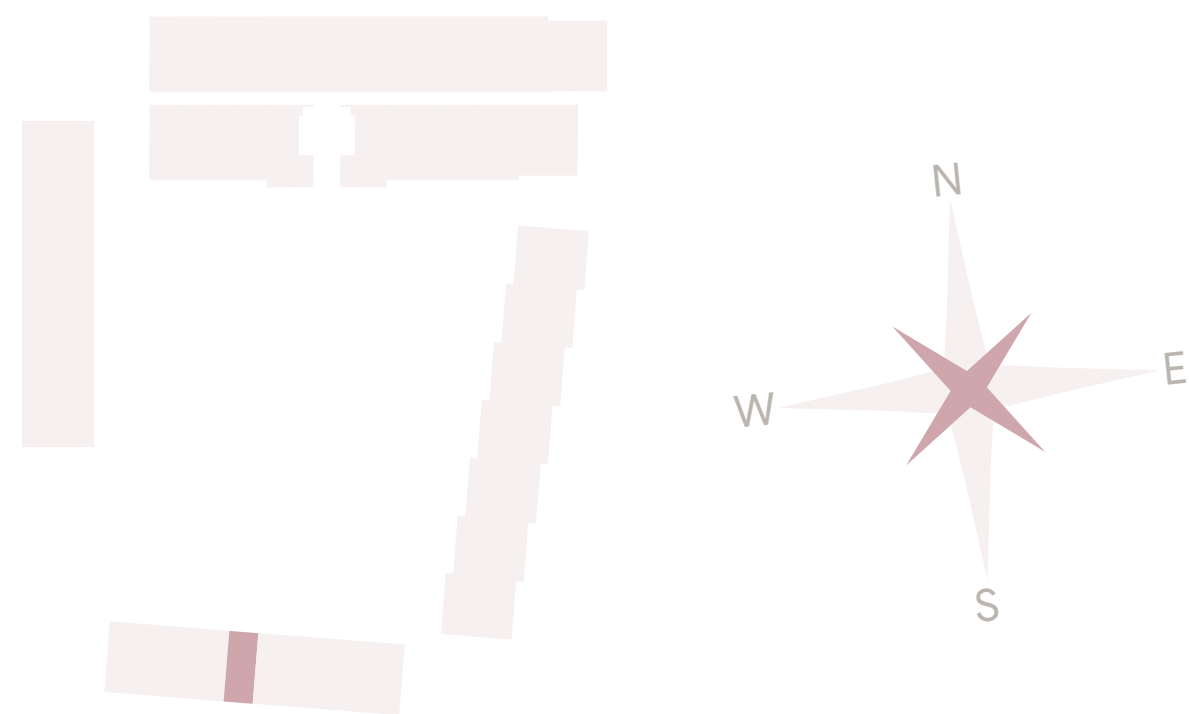
## DESIGNER SUITE

S - G - GARDEN HOME - 20  
GROUND FLOOR

### COMMUNITY

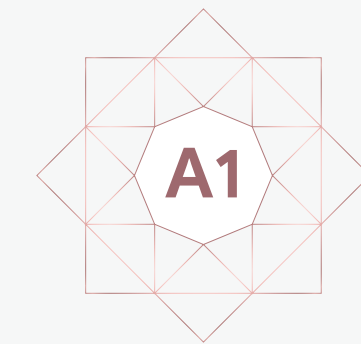
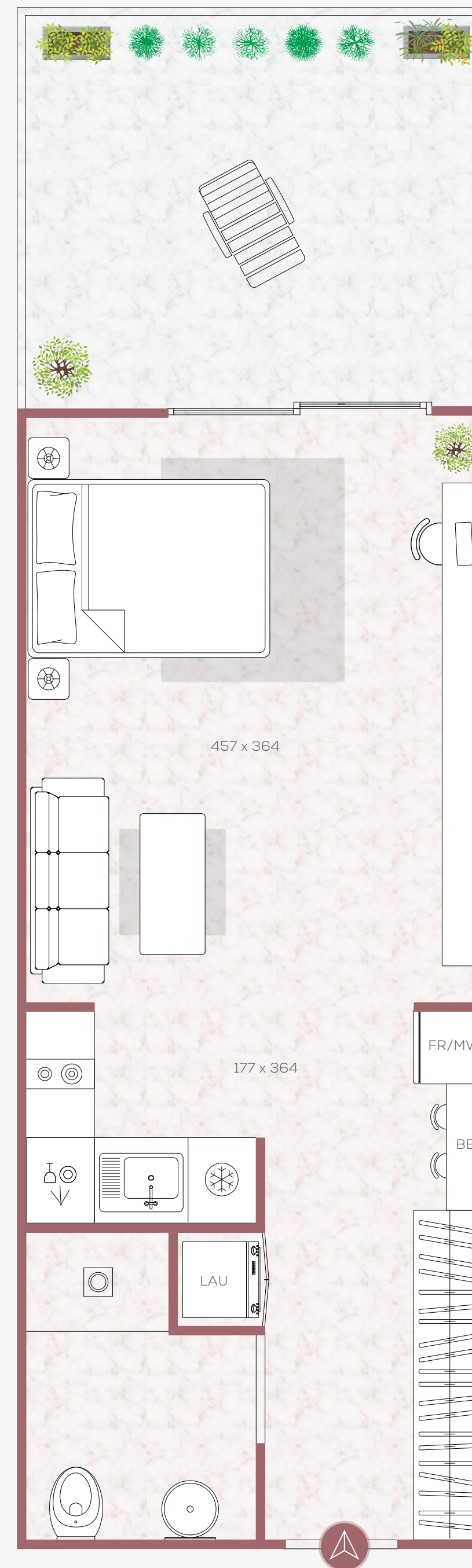
Suite	381 SQF	35.35 SQM
Terrace	115 SQF	10.64 SQM
Total Area	495 SQF	45.99 SQM

#### KEYPLAN



#### DISCLAIMER

All drawings and dimensions are approximate. Drawings are not to scale and are subject to change without notice. The developer reserves the right to make revisions. The units are taken from the typical floor of the building and columns may vary in size depending on the floor level. The furnishings and accessories shown are for representation only. The length and width of the unit and balcony varies depending on which floor and which orientation the unit is located within the building to comply with the building authority regulations.



# THE AUTOGRAPH

BY GREEN GROUP

## DESIGNER SUITE

S - G - GARDEN HOME - 23  
GROUND FLOOR

### COMMUNITY

Suite	381 SQF	35.41 SQM
Terrace	112 SQF	10.36 SQM
Total Area	493 SQF	45.77 SQM

#### KEYPLAN



#### DISCLAIMER

All drawings and dimensions are approximate. Drawings are not to scale and are subject to change without notice. The developer reserves the right to make revisions. The units are taken from the typical floor of the building and columns may vary in size depending on the floor level. The furnishings and accessories shown are for representation only. The length and width of the unit and balcony varies depending on which floor and which orientation the unit is located within the building to comply with the building authority regulations.

