



*Parkwood*  
Residences

Floors:

B + G + 5 + R



Developer's:

Arabian Gulf Properties & Refine

Completion Date:

Q3 2025



-  Palm Jumeirah - 15 min
-  Dubai Marina - 15 min
-  Downtown Dubai - 20 min
-  Maktoum International Airport - 20 min
-  Dubai International Airport - 30 min




Parkwood  
Residences

 MAKTOUM INTERNATIONAL AIRPORT

 DUBAI INTERNATIONAL AIRPORT



JSS INTERNATIONAL SCHOOL

  
*Parkwood*  
Residences

CIRCLE MALL

FIVE JUMEIRAH VILLAGE

LADYBIRD EARLY LEARNING CENTRE

SPINNEY'S

Community Park

Community Park

Community Park

DISTRICT 10

Sabar Park JVC

Park

Village Circle Park

Community Park

DISTRICT 11

Community Park

JVC Castle Park

Community Park

DISTRICT 14

Community Park

Park

Park

Community Park

JVC Park

DISTRICT 17

Community Park

Community Park

Community Park

DISTRICT 12

Community Park

Community Park

SHEIKH MOHAMMAD



  
*Parkwood*  
Residences





refine



refine



refine





refine



refine



refine



refine

# Unit Types

Studio Average Size  
**496 SQFT**

1 Bedroom Average Size  
**876 SQFT**

2 Bedroom Average Size  
**1,294 SQFT**

3 Bedroom Average Size  
**1,628 SQFT**

3 Bedroom Duplex Average Size  
**2,888 SQFT**



refine

---

# Price Range

---

Starting from  
**630K - 2.17M**

Payment Plan  
2 Year Post Completion



refine

# 2 Year Post Completion Payment Plan

Instalment	Milestone	Instalment Collection %	Total Collection %
1st	Down Payment	10%	10%
2nd	After 3 months	10%	20%
3rd	After 6 months	5%	25%
4th	After 9 months	5%	30%
5th	After 12 months	5%	35%
6th	On Completion	15%	50%
7th	5 Month After	10%	60%
8th	10 Month After	10%	70%
9th	15 Month After	10%	80%
10th	20 Month After	10%	90%
14th	<b>24 Month After</b>	10%	100%

# Key Selling Points

Community Style  
Family Living

Smart Homes with  
Scavolini Luxury  
Kitchen Cabinets

Close to Parks,  
Schools & Malls

15 Minutes away  
from Dubai Marina

20 Minutes away from  
Al Maktoum  
International Airport

2 Year Post Completion  
Payment Plan  
50% Till Completion  
50% Post Completion



---

*How to book your apartment*

# Reservation

---

1. Clients Passport Copy
2. Signed CIF, with correct customer details, valid email address and phone number to issue the receipt/s
3. AED 30k EOI required to book units

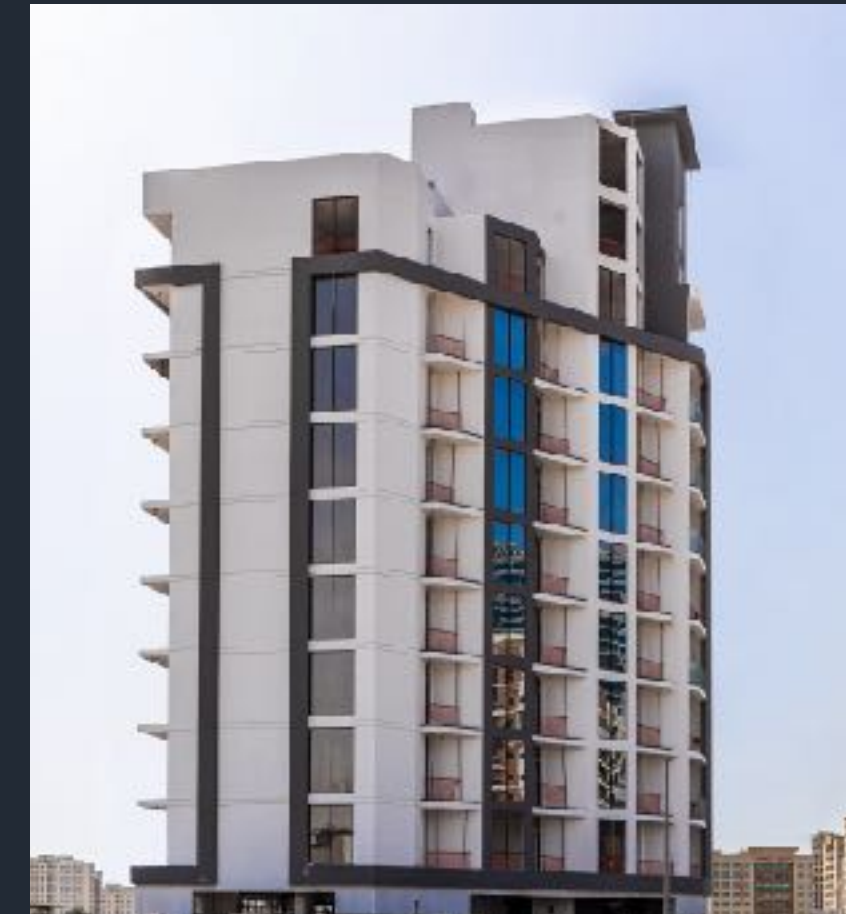
**Note:** Limited Offer





Arabian Gulf Properties is a leading property developer in the United Arab Emirates with impeccable track record, it has proven its brilliance with constructing a wide range of developments that include schools, hotels and mixed-use developments, including the iconic AG Tower in Business Bay Dubai with total investment of 700 million Dirhams.

## TRACK RECORD



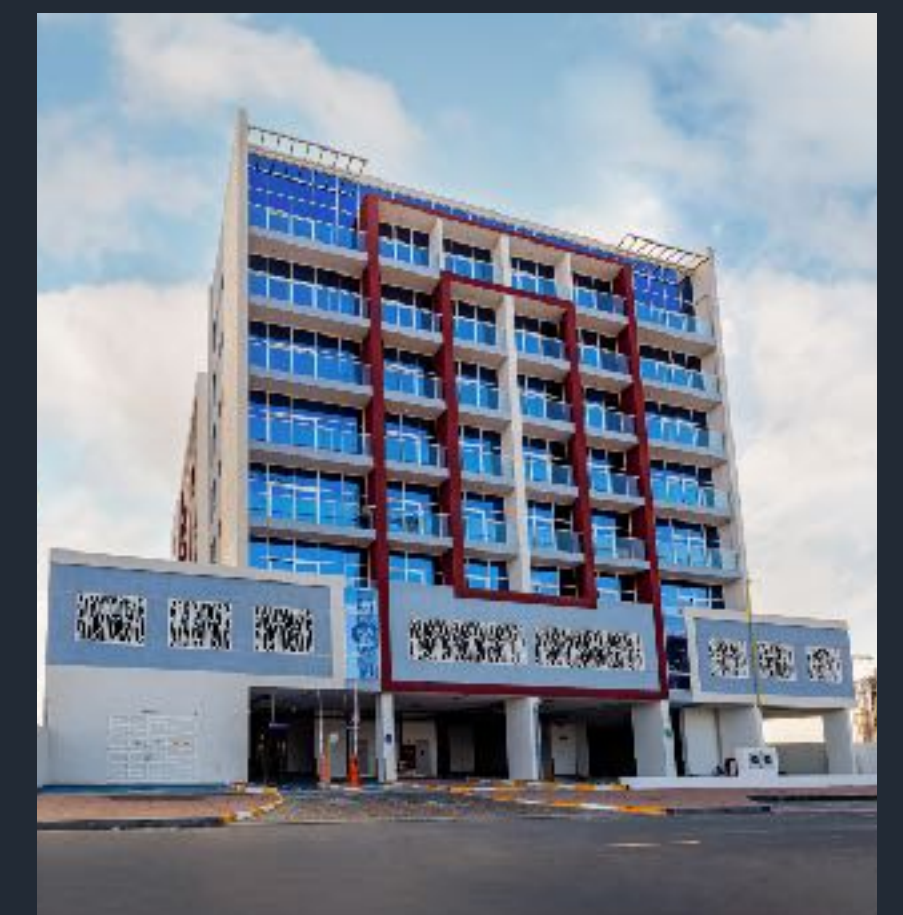
EDISON HOUSE



AG TOWER



AG RESIDENCES



K1

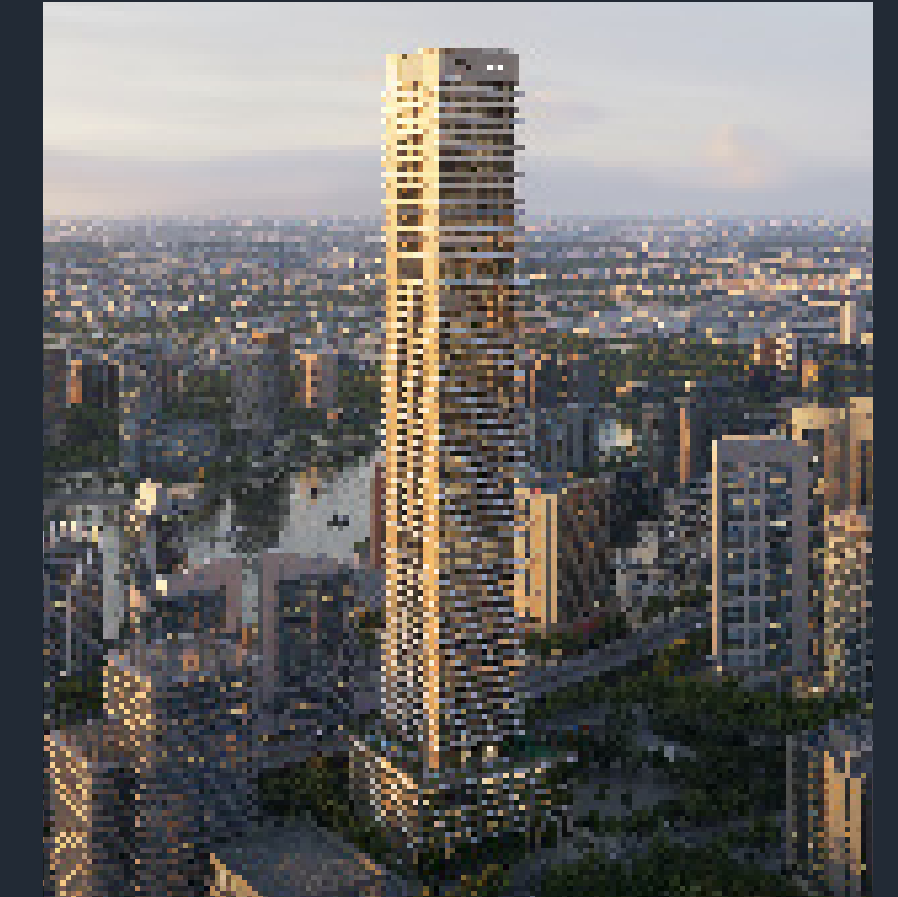
# refine

Refine is a renowned development management company backed by a group of highly accomplished real estate developers and experts, with 80 years and 10,000+ units combined development experience. Refine represents the best of all members, striving to excel and relentlessly pursue excellence, providing innovative solutions and refined products for its customers.

## TRACK RECORD



EDISON HOUSE



ST. REGIS



J ONE



MILLENNIUM BINGHATTI  
RESIDENCE

Thank You & Happy Selling



refine