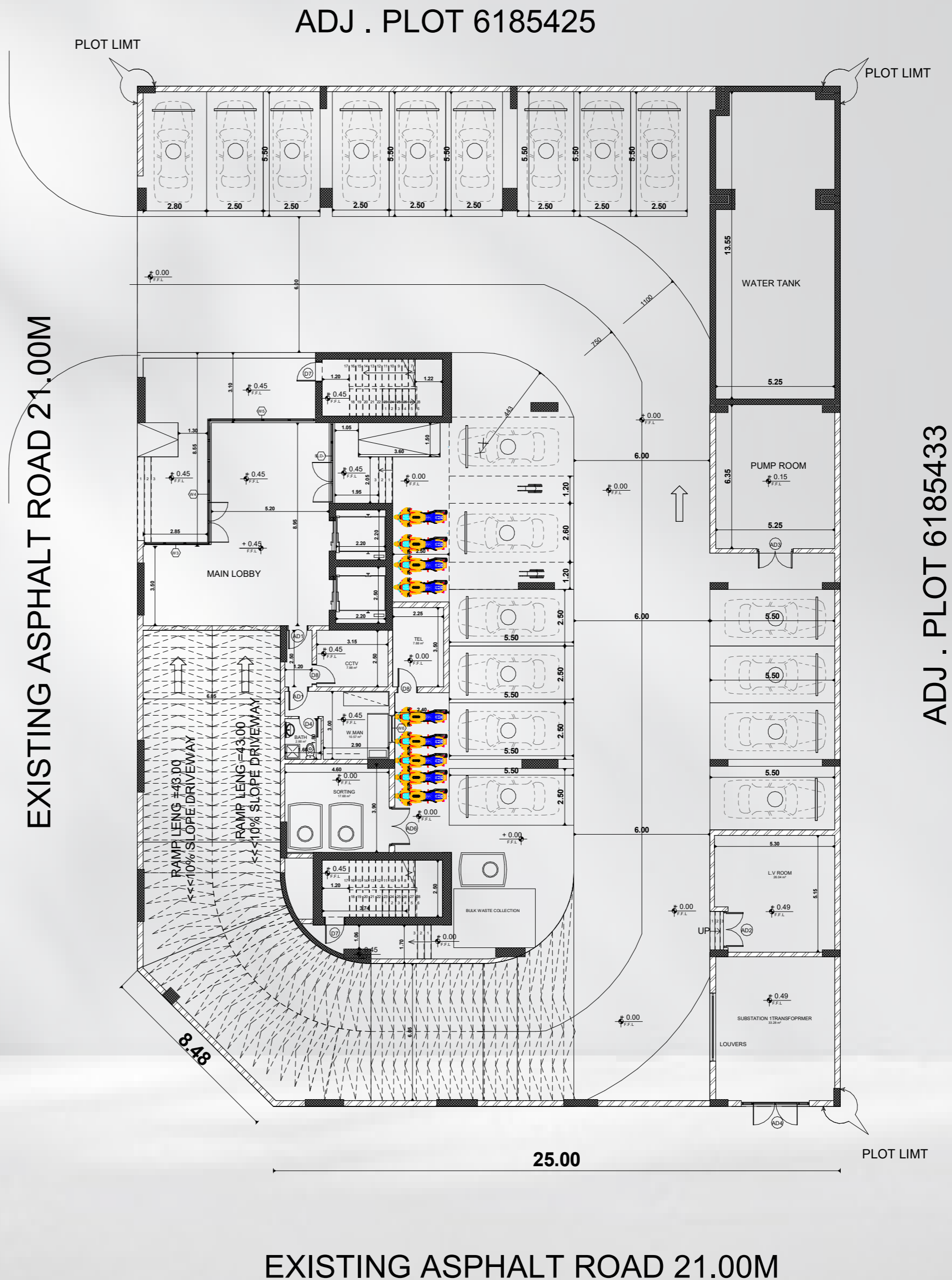


GROUND FLOOR

The ground floor consists of 19 parking spaces, as well as more than 10 bicycle parking spaces. Additionally, it features a main entrance to the building, along with a reception area, seating, and a reception desk. The building also includes various amenities. There are 2 elevators and stairs. The total area of the ground floor is 1180 sq.m.



FIRST FLOOR

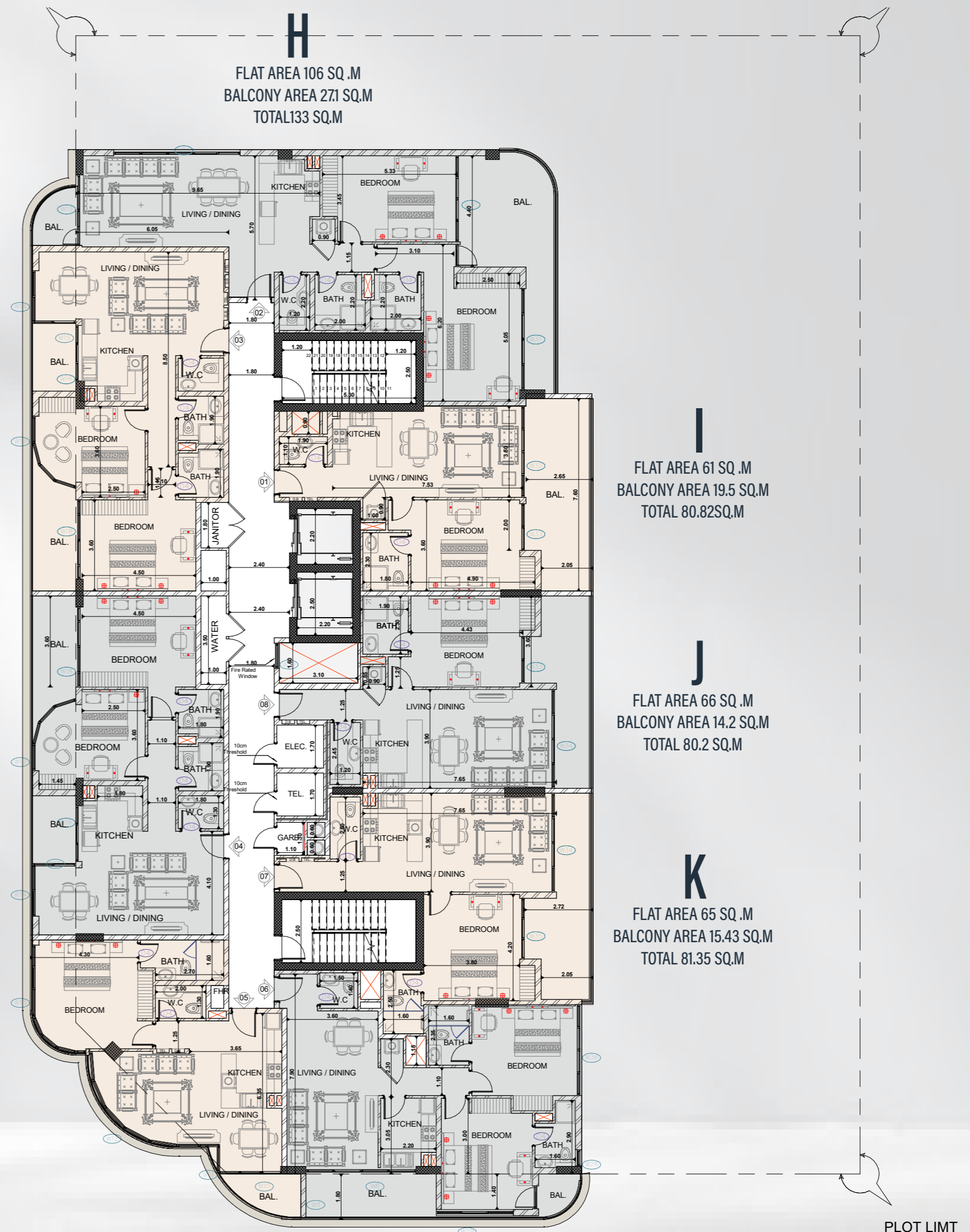
The first floor consists of 8 apartments: four one-bedroom apartments and four two-bedroom apartments. The floor plans are labeled as (A-B-C-D-E-F-G). The total area of the first floor is 1451 sq. m.



The second, fourth, and sixth floor

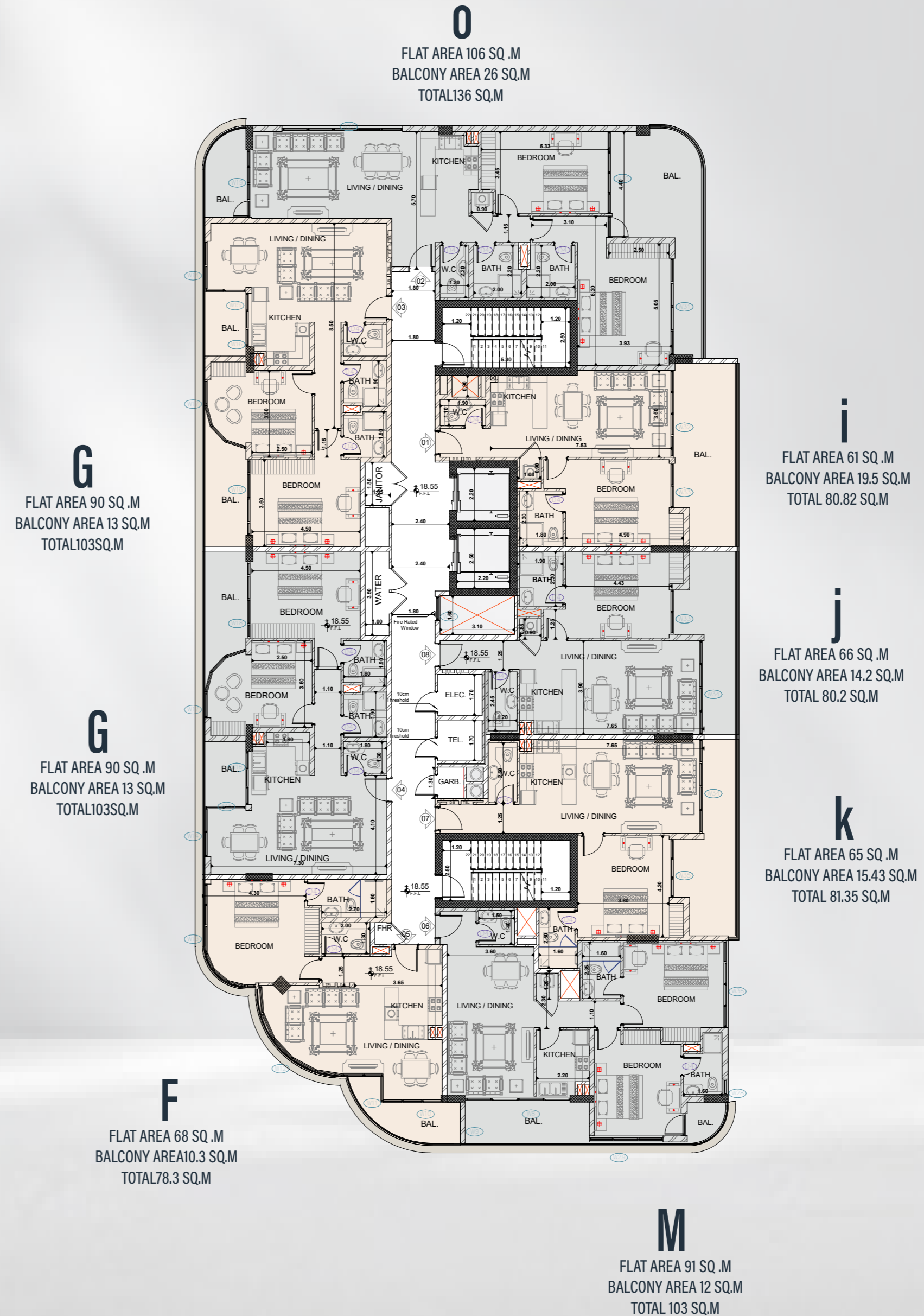
The 2, 4, and 6 floors consist of 8 apartments: four 1 bedroom apartments and four 2 bedroom apartments.

The floor plans are labeled as H, I, J, K, M, N, G. Each floor has a total area of 860 sq.m.



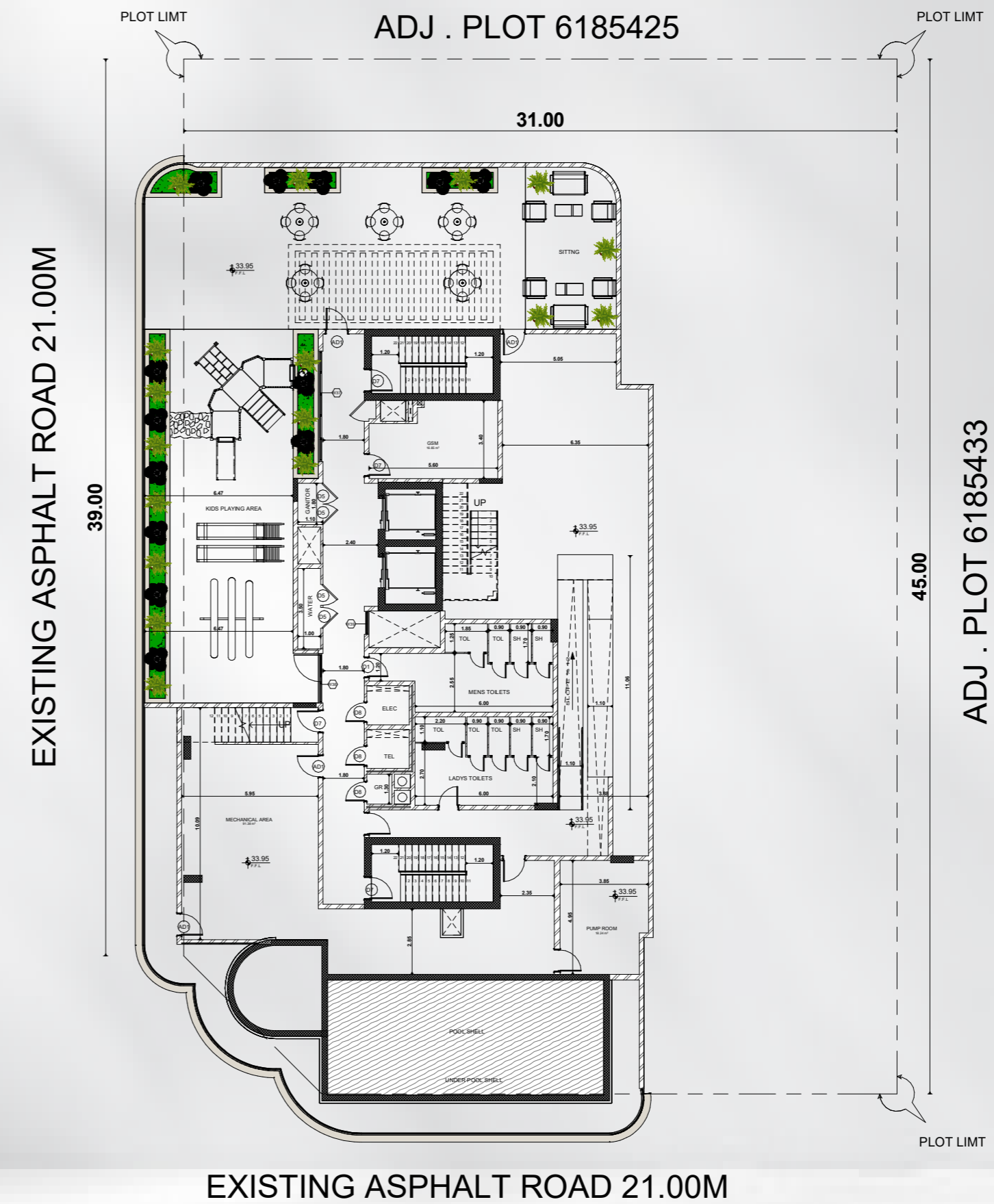
The third, and fifth floor

The 3 to 5 floors consist of 8 apartments:
four 1 bedroom apartments and four
2 bedroom apartments. The floor area is
865 SQ.M. The apartment models are
labeled O, I, J, K, M, F, G.



THE ROOF

The roof consists of a building pool, as well as a children's pool with private shaded seating by the pool. Additionally, there is a children's play area with shaded seating, private pool bathrooms, and seating areas. The roof area spans 874 sq.m.



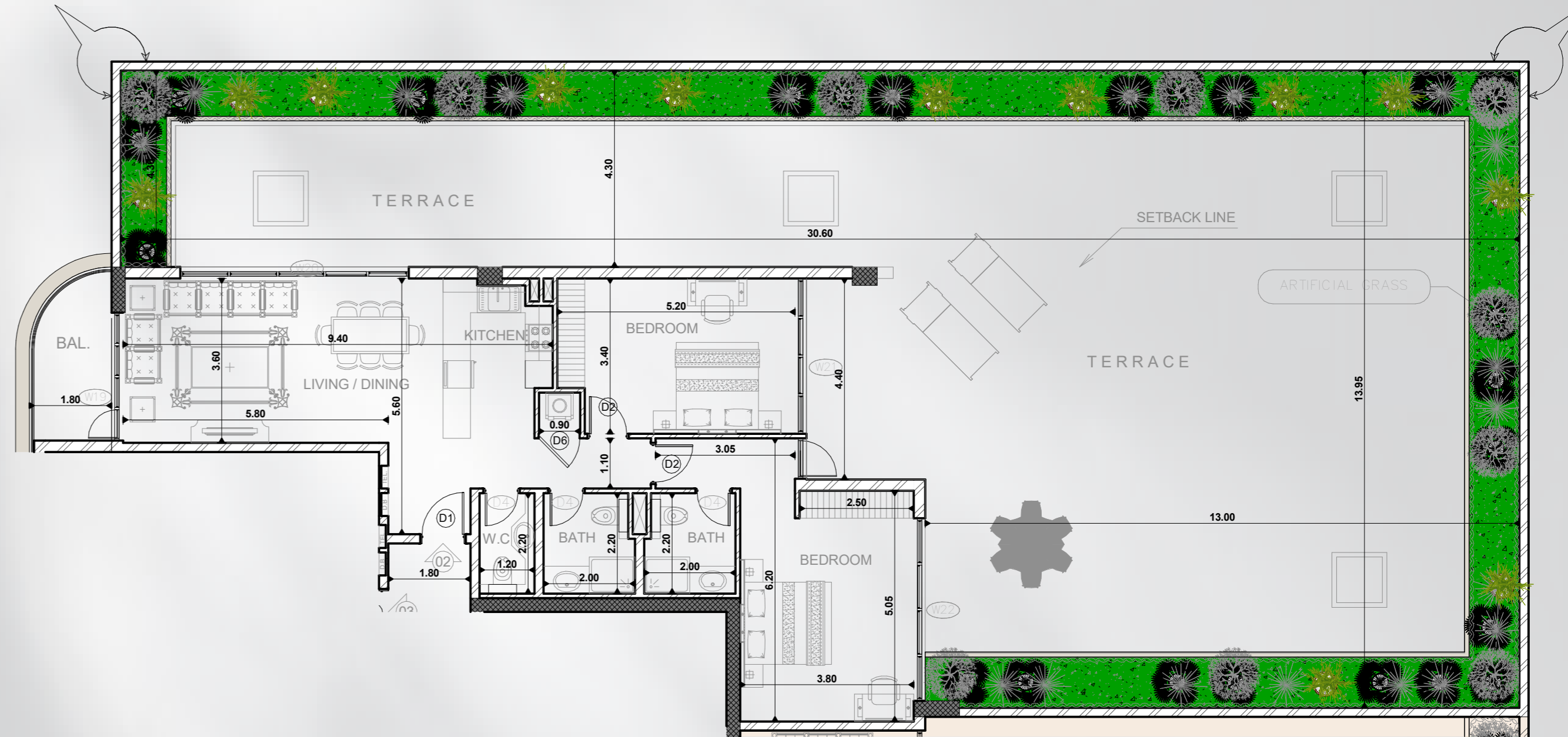
MODEL: A

The A model consists of 2 bedrooms and a living room with a street view.

FLAT AREA 106 SQ.M

BALCONY AREA 287 SQ.M

TOTAL 393 SQ.M



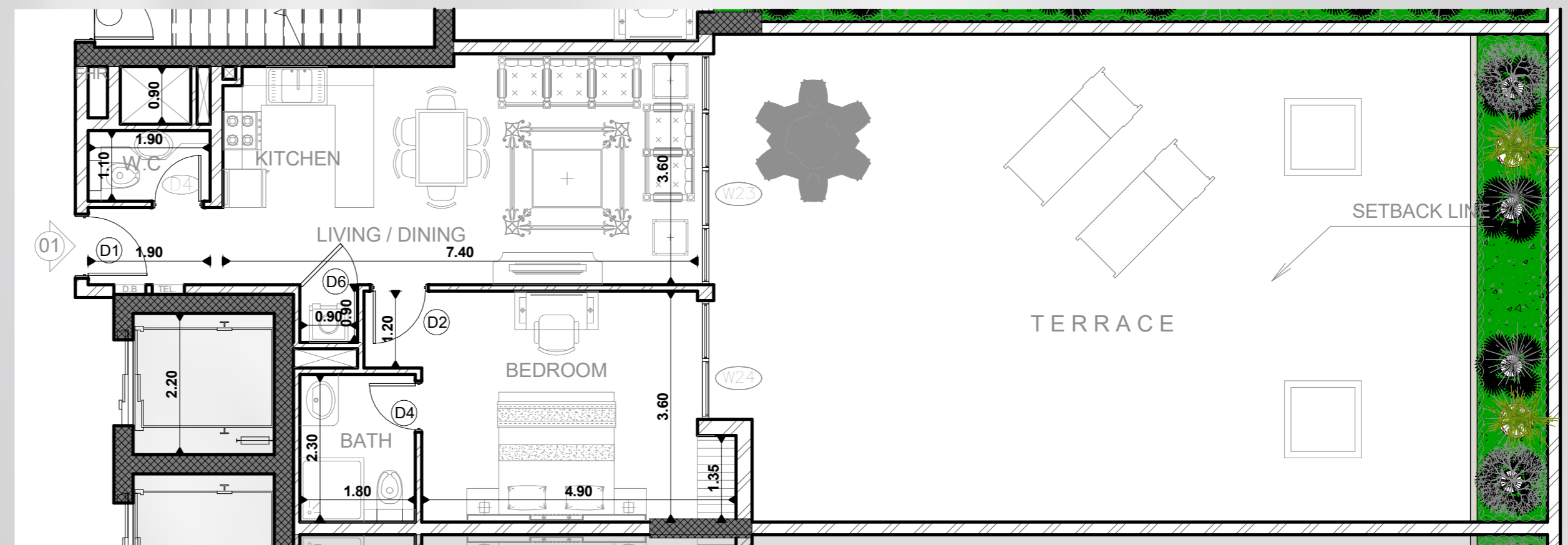
MODEL: B

The B model consists of 1 bedroom and a living room with a street view.

FLAT AREA 61 SQ.M

BALCONY AREA 101 SQ.M

TOTAL 161 SQ.M



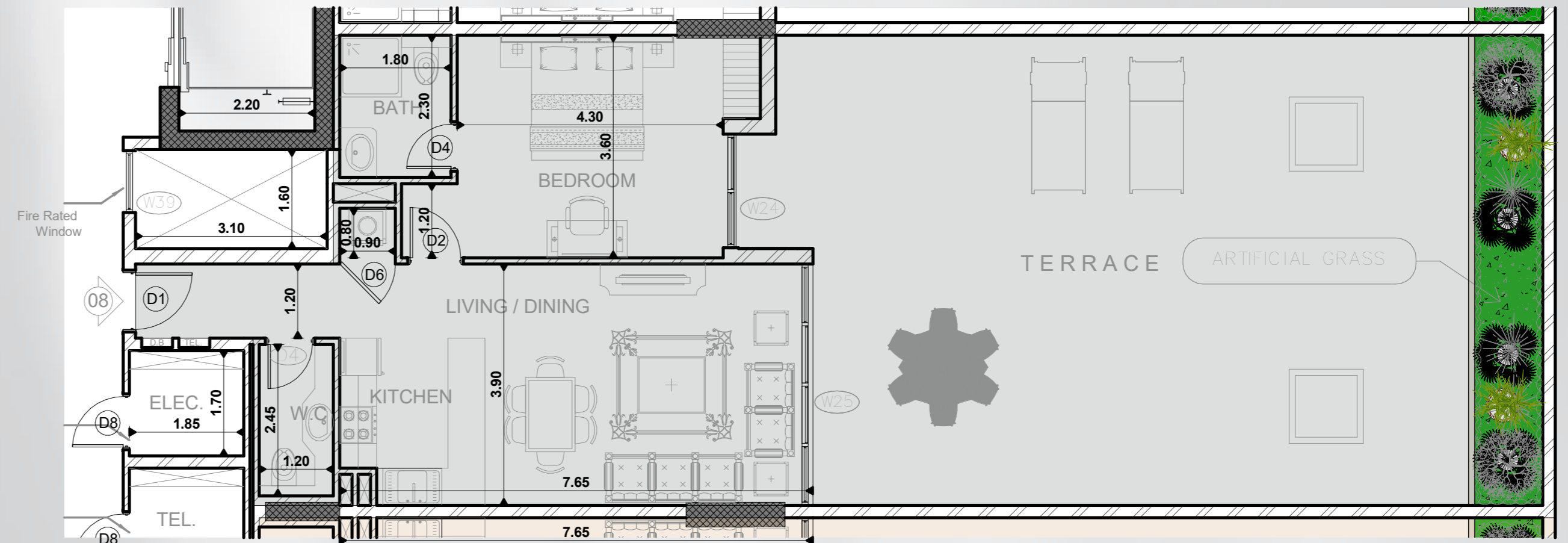
MODEL: C

The B model consists of 1 bedroom and a living room with a street view.

FLAT AREA 66SQ .M

BALCONY AREA 96.8SQ.M

TOTAL 162.9 SQ.M



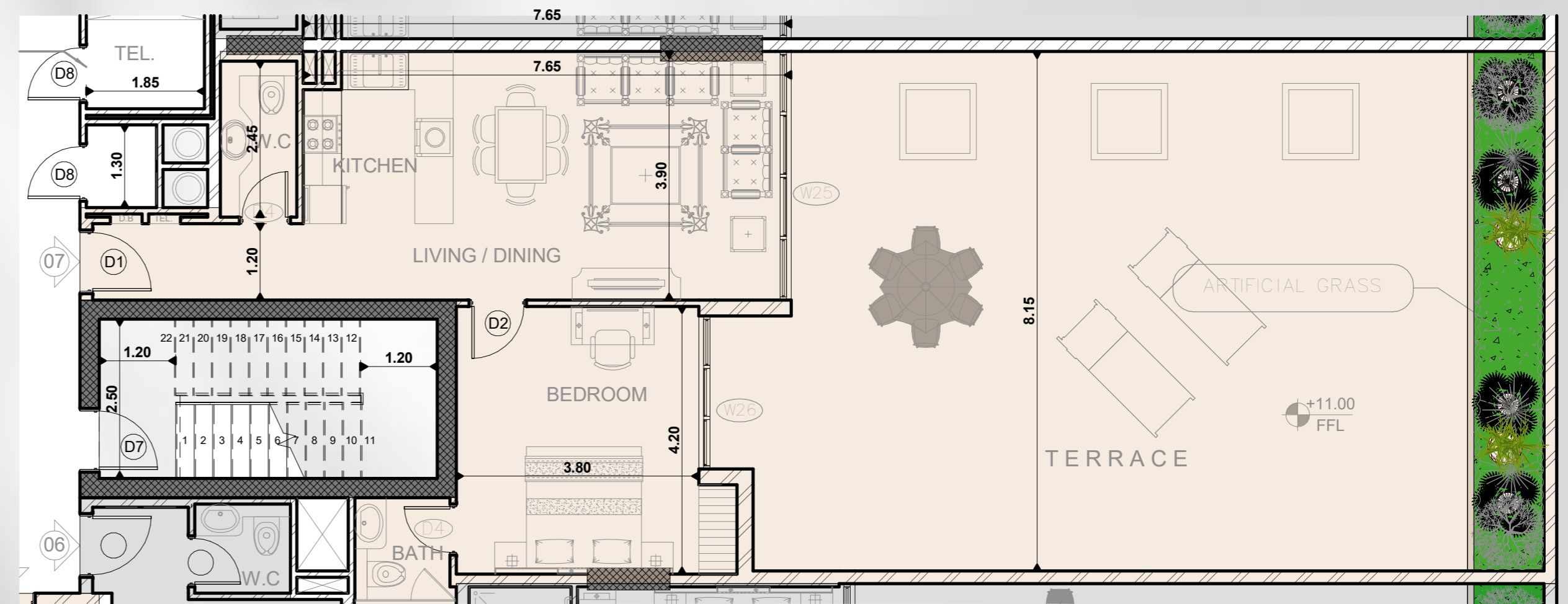
MODEL: D

The B model consists of 1 bedroom and a living room with a street view.

FLAT AREA 65 SQ.M

BALCONY AREA 103 SQ.M

TOTAL 169 SQ.M



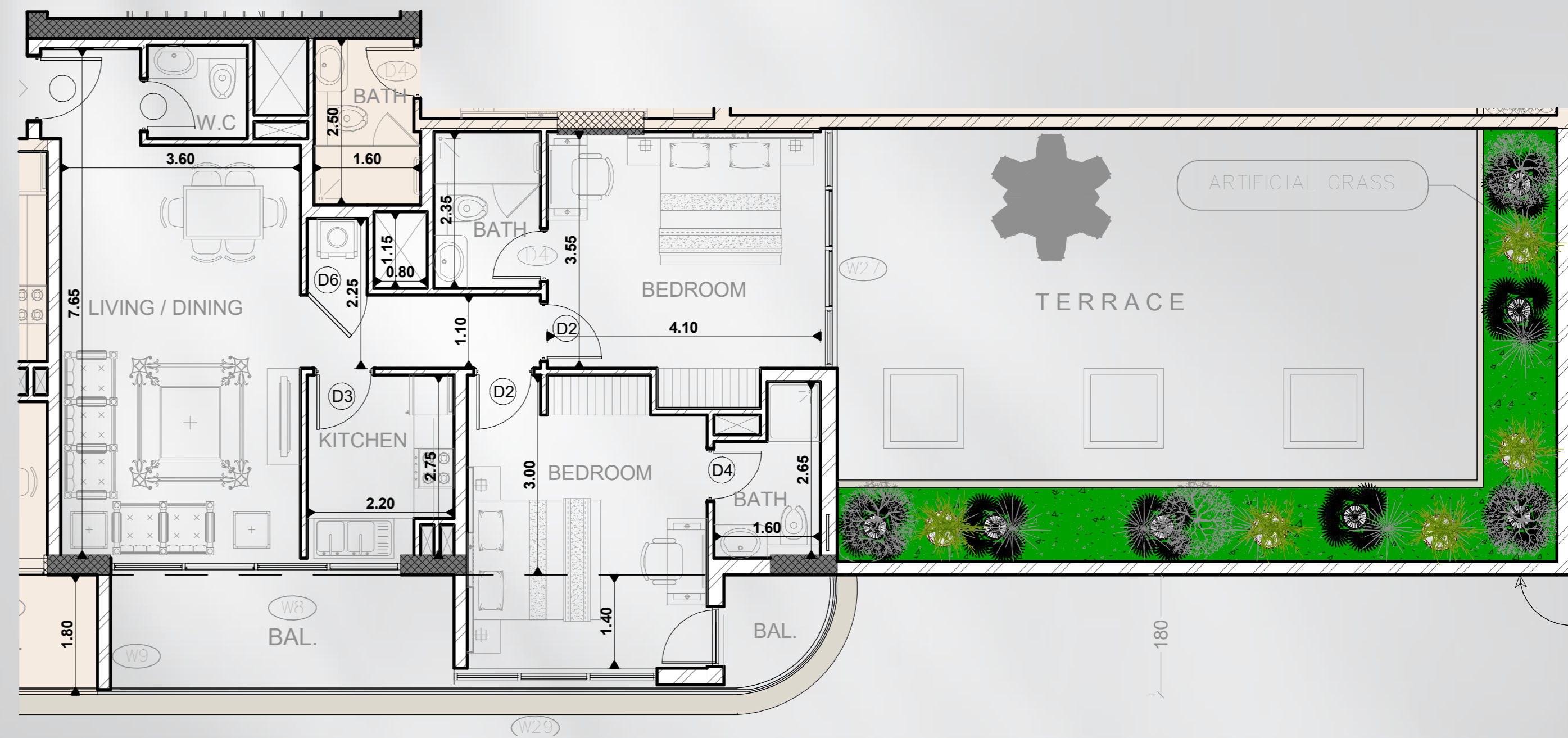
MODEL: E

The A model consists of 2 bedrooms and a living room with a street view.

FLAT AREA 91 SQ.M

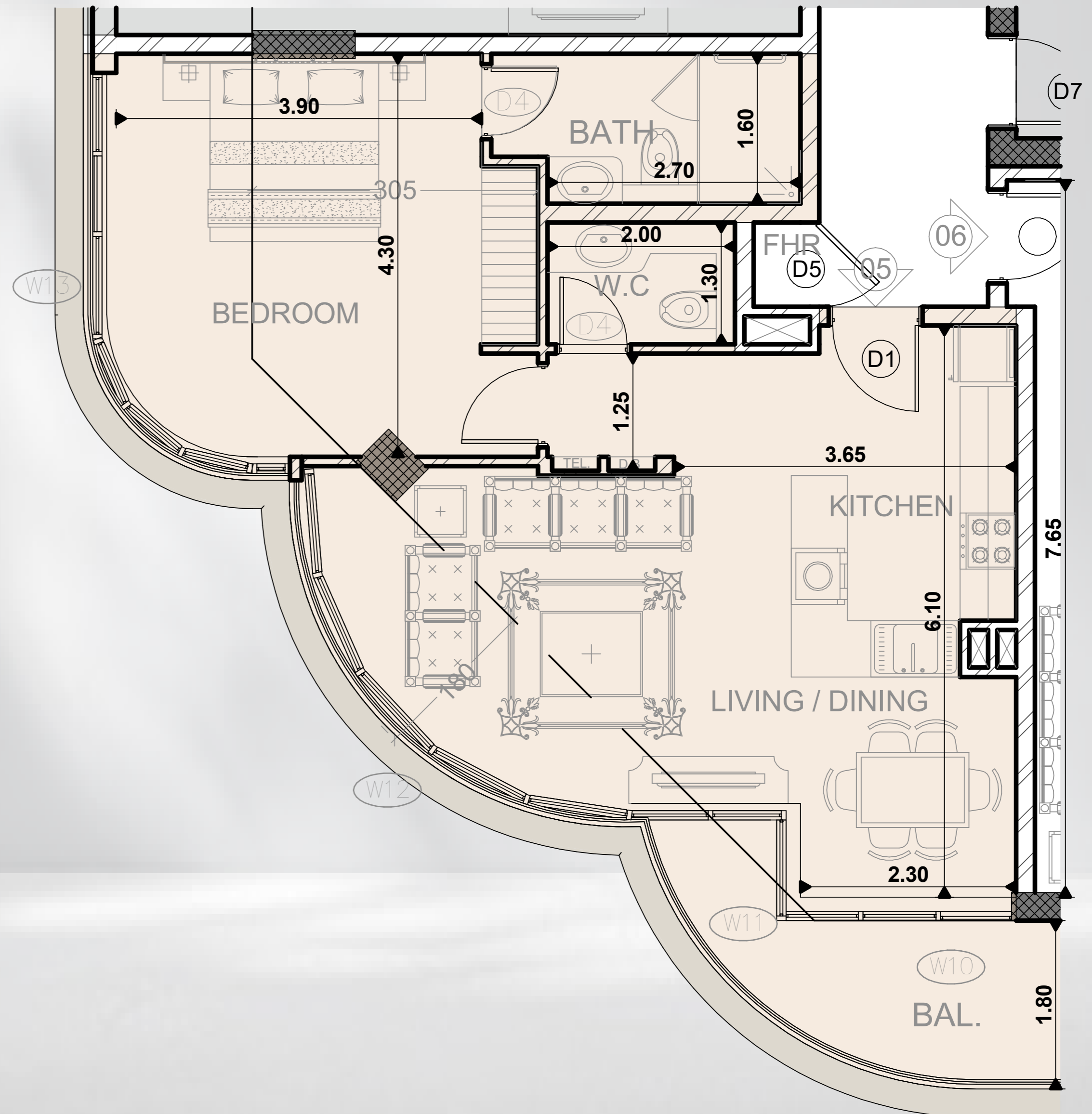
BALCONY AREA 86.7 SQ.M

TOTAL 177 SQ.M



MODEL: F

The B model consists of 1 bedroom and a living room with a street view.
FLAT AREA 68 SQ.M
BALCONY AREA 10.3 SQ.M
TOTAL 78.3 SQ.M



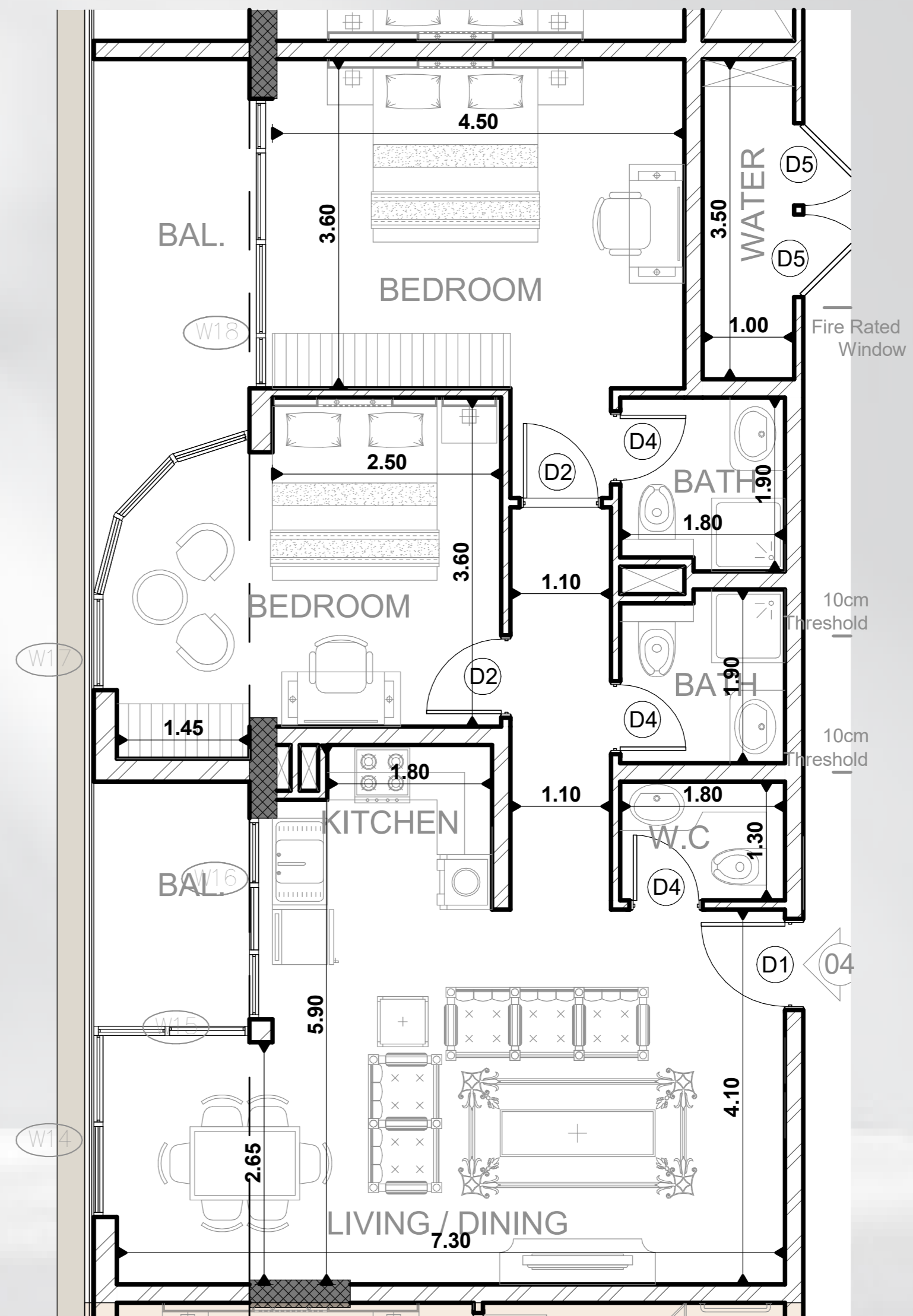
MODEL: G

The B model consists of 2 bedrooms and a living room with a street view.

FLAT AREA 90 SQ.M

BALCONY AREA 13 SQ.M

TOTAL 103 SQ.M



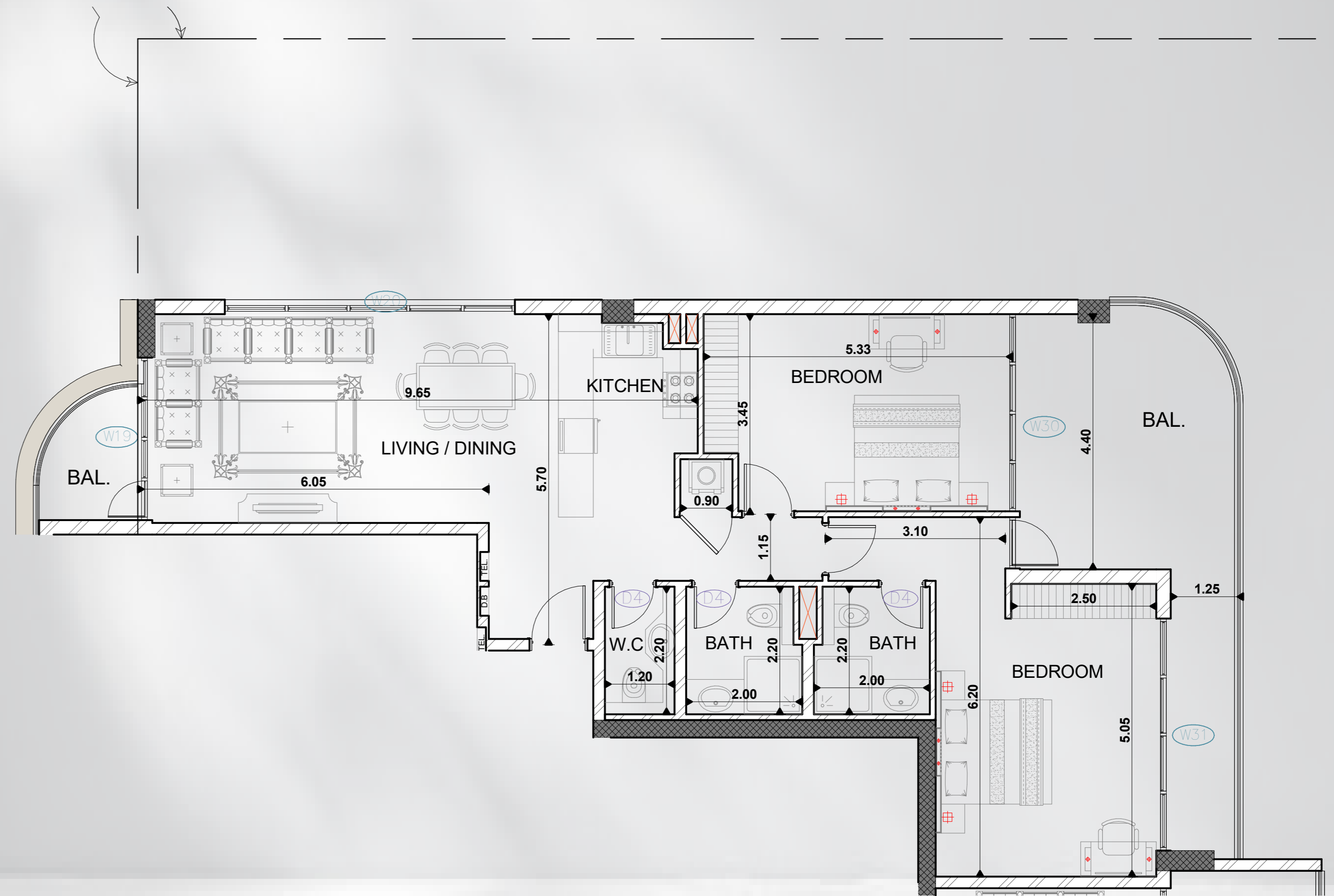
MODEL: H

The B model consists of 2 bedrooms and a living room with a street view.

FLAT AREA 106 SQ.M

BALCONY AREA 27 SQ.M

TOTAL 133 SQ.M



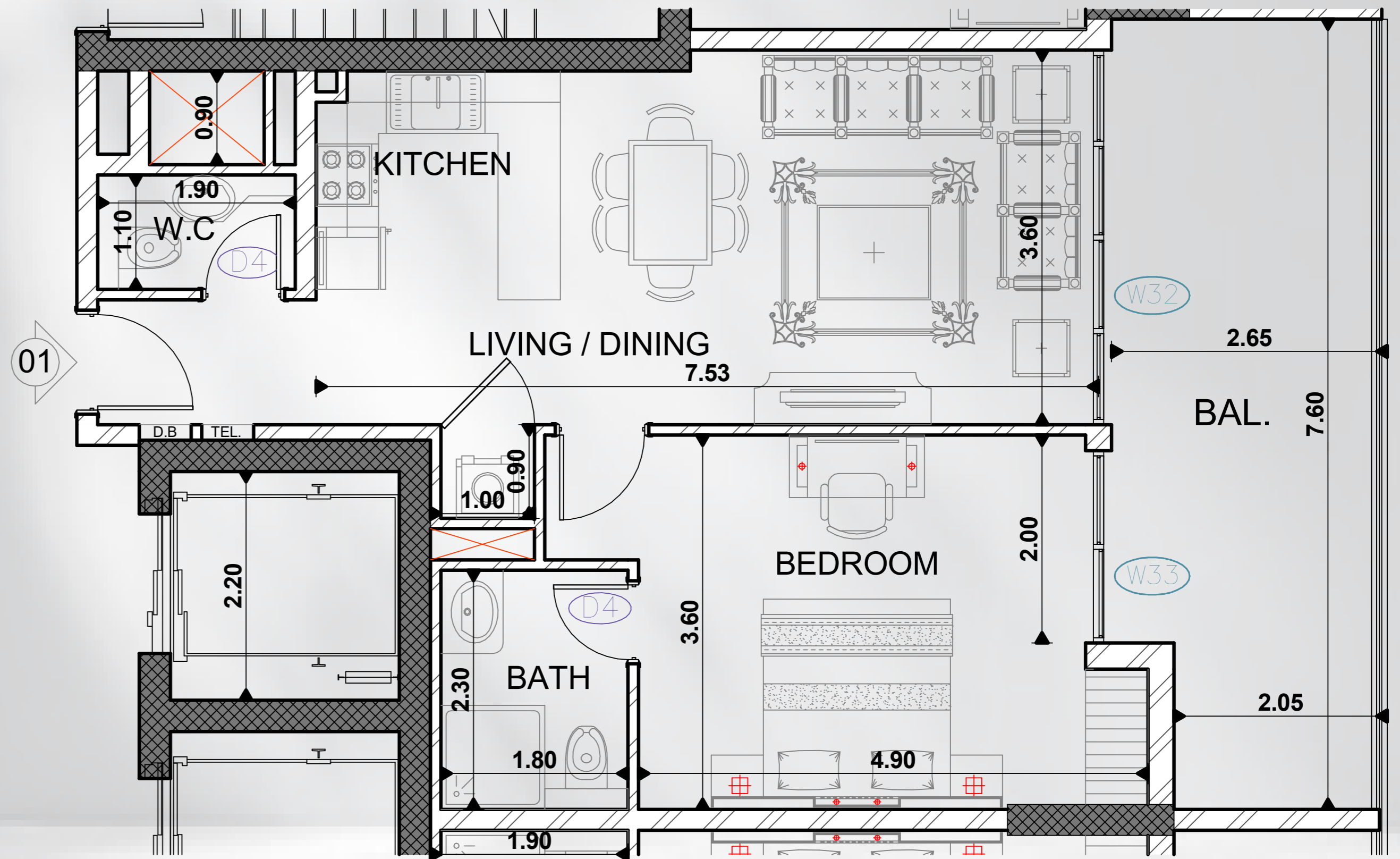
MODEL: I

The A model consists of 1 bedroom and a living room with a street view.

FLAT AREA 61 SQ.M

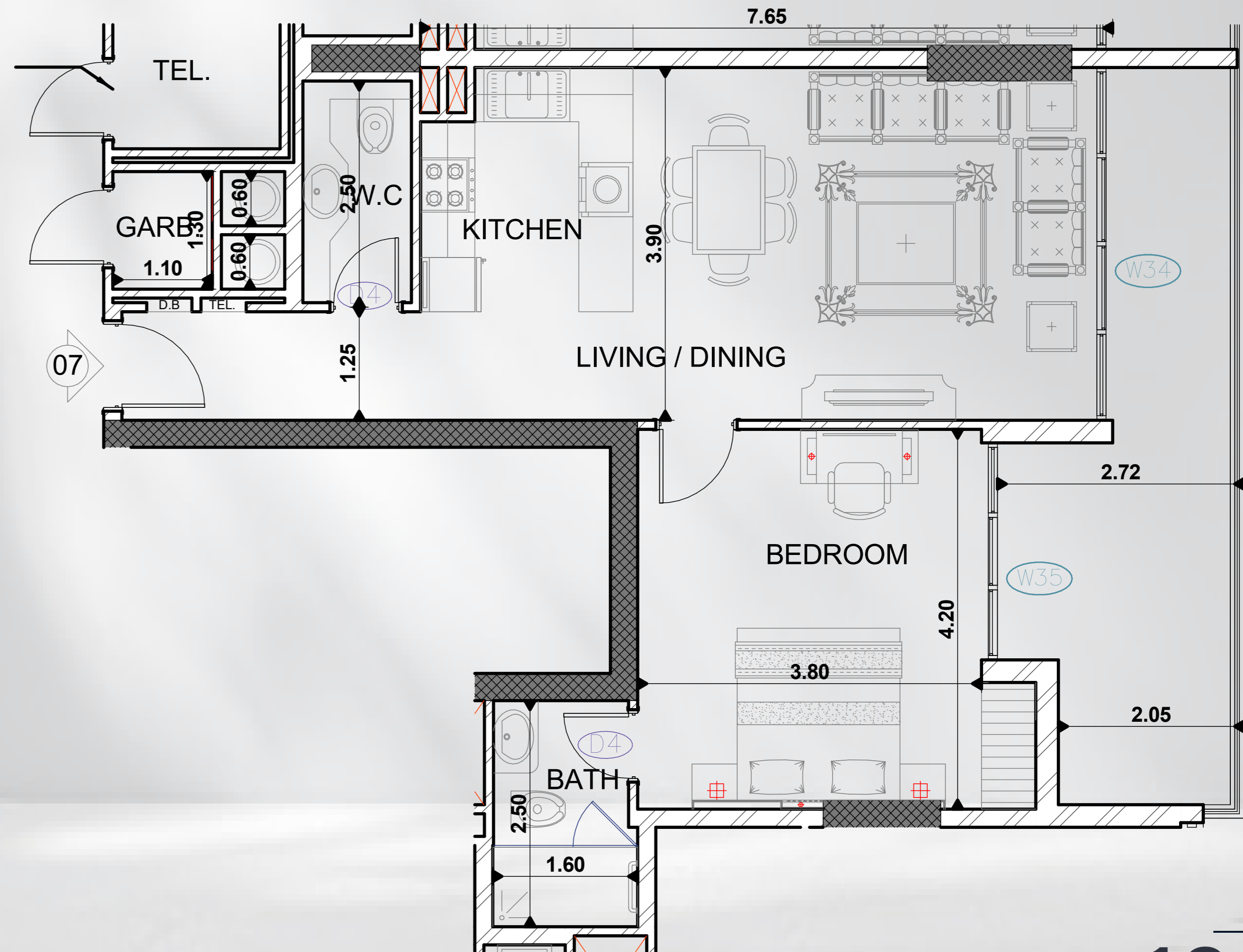
BALCONY AREA 19.5 SQ.M

TOTAL 80.82 SQ.M



MODEL: K

The B model consists of 1 bedroom and
a living room with a street view.
FLAT AREA 651 SQ.M
BALCONY AREA 15.43 SQ.M
TOTAL 81.35 SQ.M



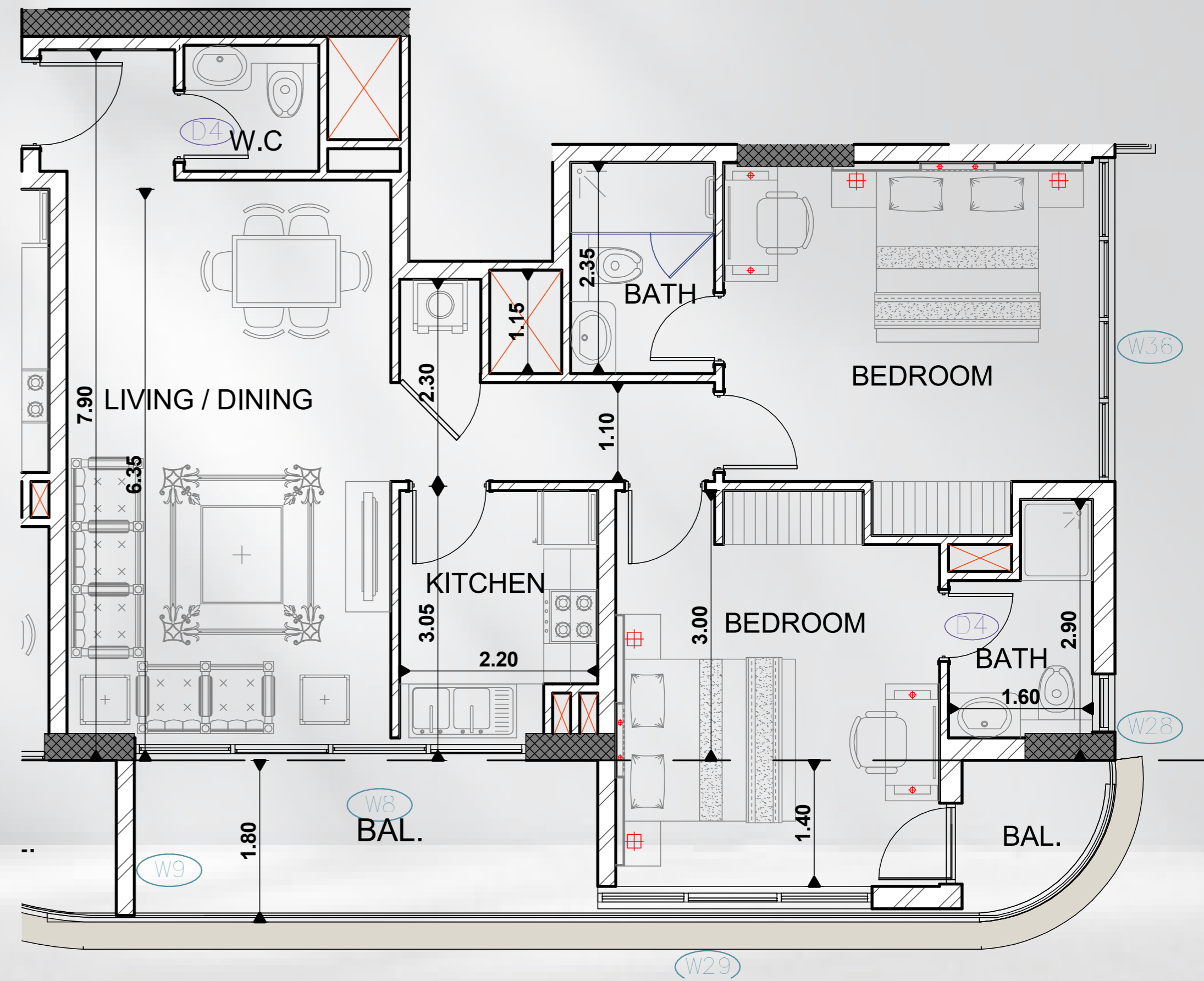
MODEL: M

The B model consists of 2 bedrooms and a living room with a street view.

FLAT AREA 91 SQ.M

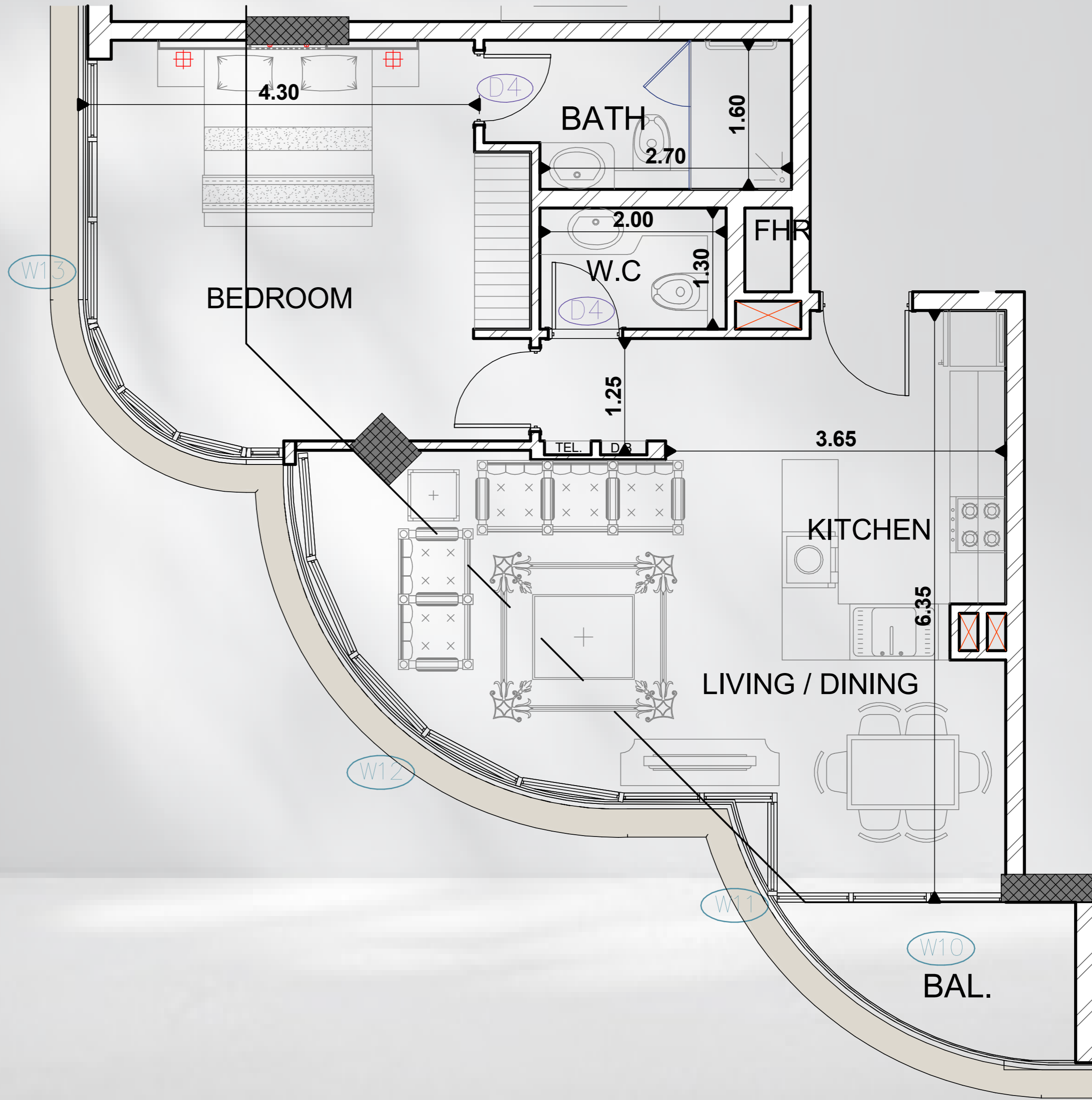
BALCONY AREA 12 SQ.M

TOTAL 103 SQ.M



MODEL:N

The A model consists of 1 bedroom and a living room with a street view.
FLAT AREA 68 SQ.M
BALCONY AREA 7.5 SQ.M
TOTAL 75.5 SQ.M



MODEL:0

The B model consists of 2 bedrooms and
a living room with a street view.
FLAT AREA 106 SQ.M
BALCONY AREA 26 SQ.M
TOTAL 136 SQ.M

