

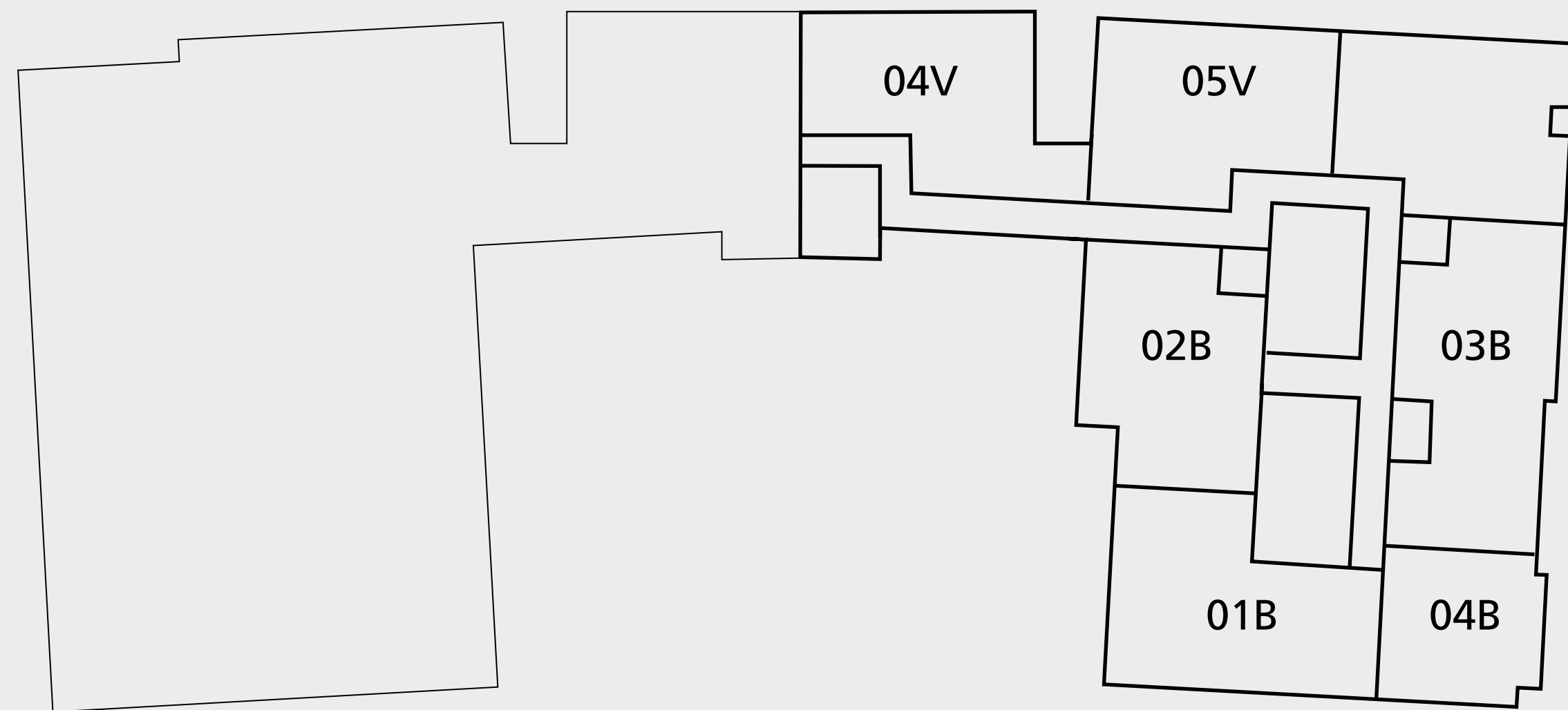
DAR AL ARKAN PAGANI TOWER

FLOOR 1

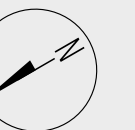
- LAYOUT PLAN -

All pictures, plans, layouts, information, data and details included in this brochure are indicative only and may change at any time up to the final 'as built' status in accordance with final designs of the project, regulatory approvals and planning permissions. All accessories and interior finishes such as wallpaper, chandeliers, furniture, electronics, white goods, curtains, hard and soft landscaping, pavements, features, gym, swimming pool(s) and other elements displayed in the brochure, or within the show apartment or between the plot boundary and the unit, are not part of the unit and are shown for illustrative purposes only.

DUBAI CANAL

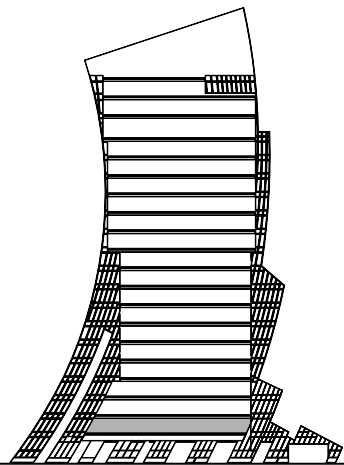


BURJ KHALIFA



2 BEDROOMS

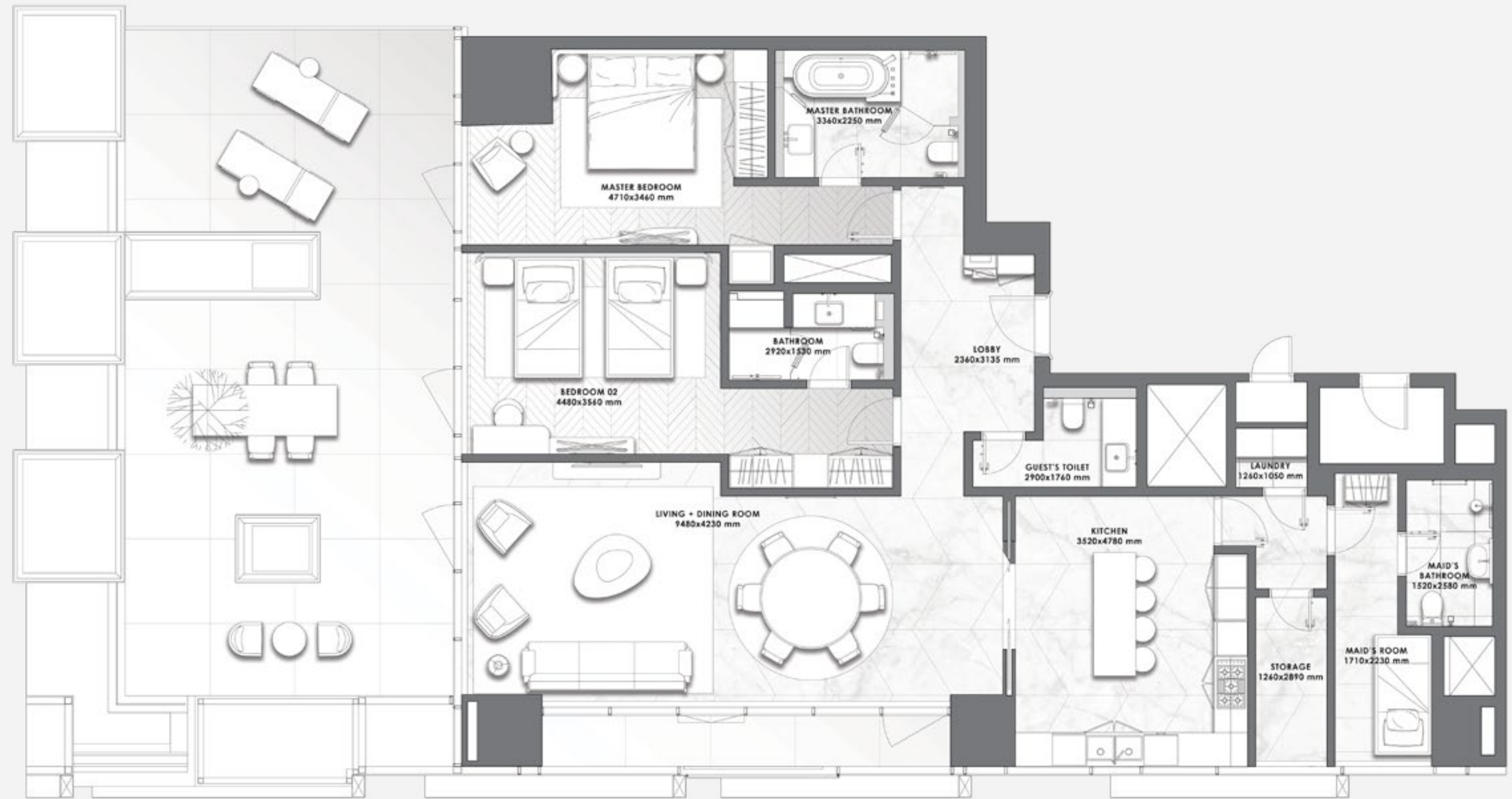
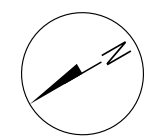
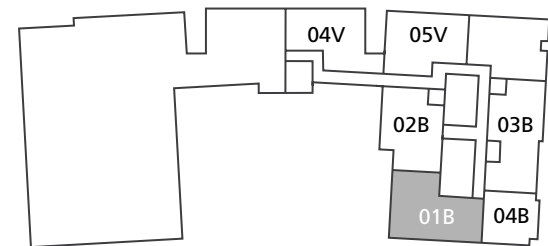
– 01 SERIES –



FLOOR

1

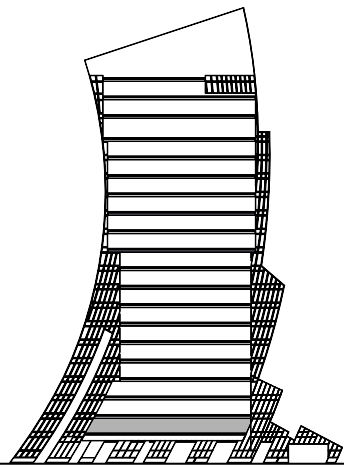
Suite Area	1,739.77 sq.ft.
Balcony Area	797.50 sq.ft.
Total Area	2,537.27 sq.ft.



All pictures, plans, layouts, information, data and details included in this brochure are indicative only and may change at any time up to the final 'as built' status in accordance with final designs of the project, regulatory approvals and planning permissions. All accessories and interior finishes such as wallpaper, chandeliers, furniture, electronics, white goods, curtains, hard and soft landscaping, pavements, features, gym, swimming pool(s) and other elements displayed in the brochure, or within the show apartment or between the plot boundary and the unit, are not part of the unit and are shown for illustrative purposes only.

2 BEDROOMS

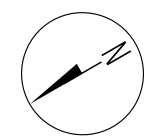
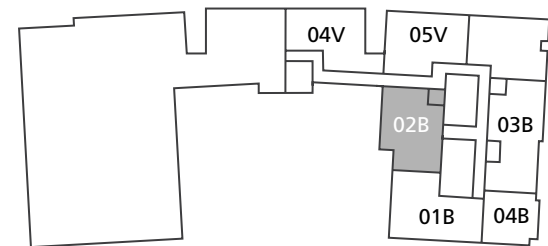
– 02 SERIES –



FLOOR

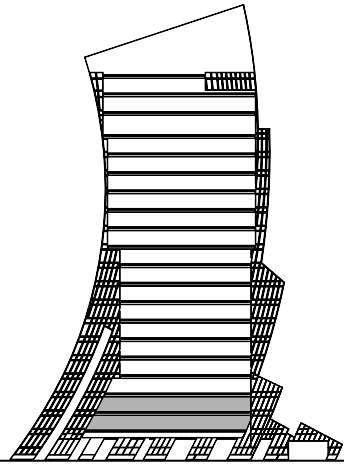
1

Suite Area	1,701.56 sq.ft.
Balcony Area	608.05 sq.ft.
Total Area	2,309.61 sq.ft.



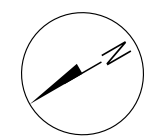
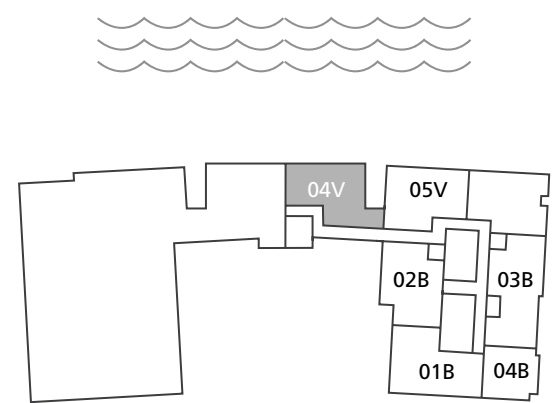
All pictures, plans, layouts, information, data and details included in this brochure are indicative only and may change at any time up to the final 'as built' status in accordance with final designs of the project, regulatory approvals and planning permissions. All accessories and interior finishes such as wallpaper, chandeliers, furniture, electronics, white goods, curtains, hard and soft landscaping, pavements, features, gym, swimming pool(s) and other elements displayed in the brochure, or within the show apartment or between the plot boundary and the unit, are not part of the unit and are shown for illustrative purposes only.

4 BEDROOMS
 DUPLEX
 - 04 SERIES -



FLOORS
 1 & 2

Suite Area	3,083 sq.ft.
Balcony Area	1,278 sq.ft.
Total Area	4,362 sq.ft.



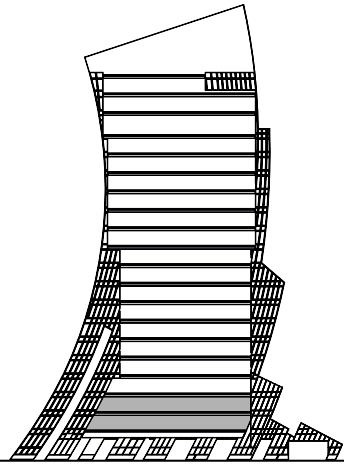
LOWER LEVEL



UPPERLEVEL

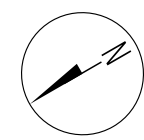
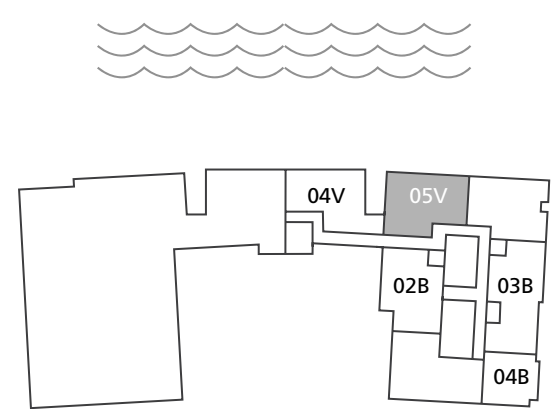
All pictures, plans, layouts, information, data and details included in this brochure are indicative only and may change at any time up to the final 'as built' status in accordance with final designs of the project, regulatory approvals and planning permissions. All accessories and interior finishes such as wallpaper, chandeliers, furniture, electronics, white goods, curtains, hard and soft landscaping, pavements, features, gym, swimming pool(s) and other elements displayed in the brochure, or within the show apartment or between the plot boundary and the unit, are not part of the unit and are shown for illustrative purposes only.

3 BEDROOMS DUPLEX - 05 SERIES -



FLOORS 1 & 2

Suite Area	3,258 sq.ft.
Balcony Area	1,311 sq.ft.
Total Area	4,569 sq.ft.



LOWER LEVEL



UPPERLEVEL

All pictures, plans, layouts, information, data and details included in this brochure are indicative only and may change at any time up to the final 'as built' status in accordance with final designs of the project, regulatory approvals and planning permissions. All accessories and interior finishes such as wallpaper, chandeliers, furniture, electronics, white goods, curtains, hard and soft landscaping, pavements, features, gym, swimming pool(s) and other elements displayed in the brochure, or within the show apartment or between the plot boundary and the unit, are not part of the unit and are shown for illustrative purposes only.

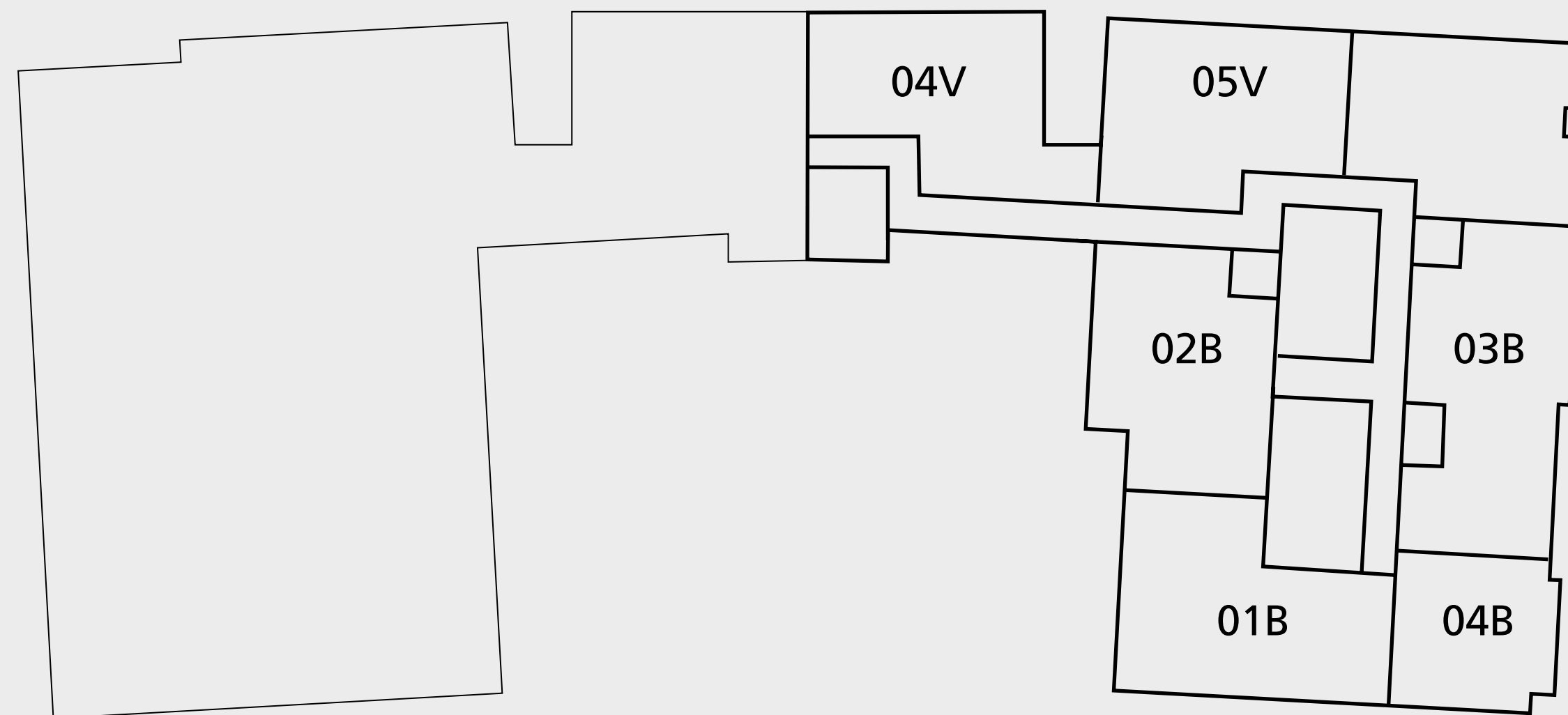
DAR AL ARKAN PAGANI TOWER

FLOOR 2

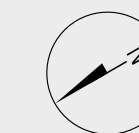
- LAYOUT PLAN -

All pictures, plans, layouts, information, data and details included in this brochure are indicative only and may change at any time up to the final 'as built' status in accordance with final designs of the project, regulatory approvals and planning permissions. All accessories and interior finishes such as wallpaper, chandeliers, furniture, electronics, white goods, curtains, hard and soft landscaping, pavements, features, gym, swimming pool(s) and other elements displayed in the brochure, or within the show apartment or between the plot boundary and the unit, are not part of the unit and are shown for illustrative purposes only.

DUBAI CANAL

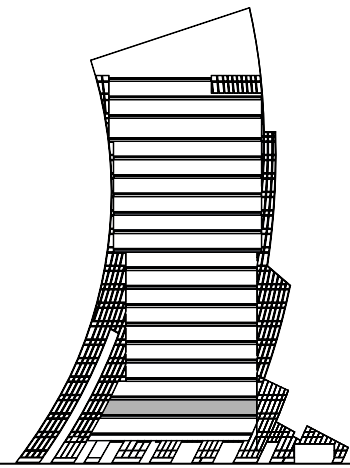


BURJ KHALIFA



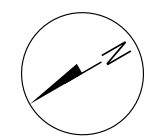
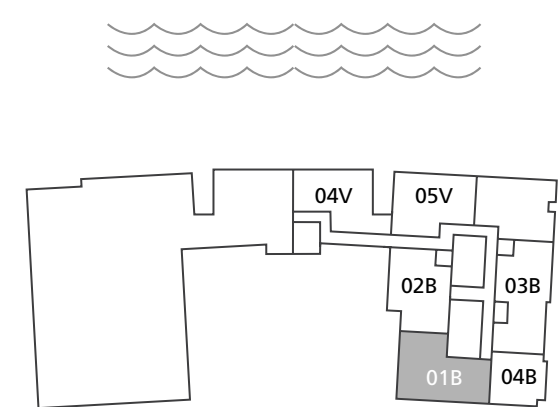
2 BEDROOMS

– 01 SERIES –



FLOOR 2

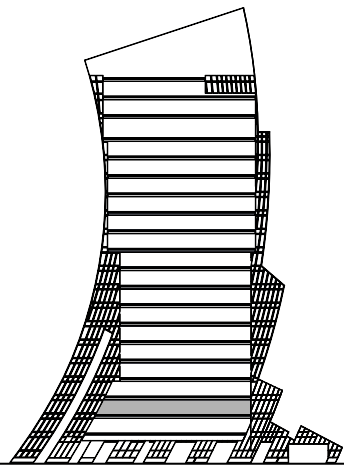
Suite Area	1,562 sq.ft.
Balcony Area	412 sq.ft.
Total Area	1,975 sq.ft.



All pictures, plans, layouts, information, data and details included in this brochure are indicative only and may change at any time up to the final 'as built' status in accordance with final designs of the project, regulatory approvals and planning permissions. All accessories and interior finishes such as wallpaper, chandeliers, furniture, electronics, white goods, curtains, hard and soft landscaping, pavements, features, gym, swimming pool(s) and other elements displayed in the brochure, or within the show apartment or between the plot boundary and the unit, are not part of the unit and are shown for illustrative purposes only.

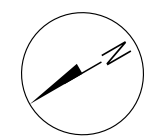
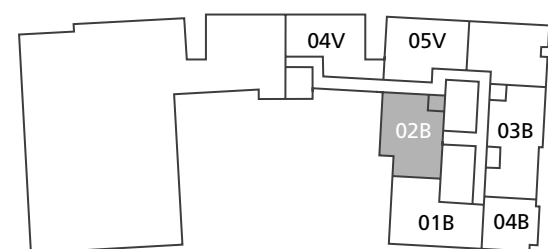
2 BEDROOMS

– 02 SERIES –



FLOOR 2

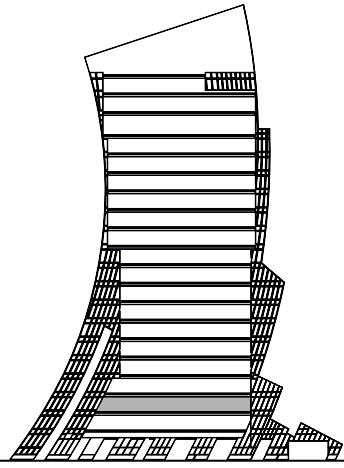
Suite Area	1,710.17 sq.ft.
Balcony Area	137.89 sq.ft.
Total Area	1,848.06 sq.ft.



All pictures, plans, layouts, information, data and details included in this brochure are indicative only and may change at any time up to the final 'as built' status in accordance with final designs of the project, regulatory approvals and planning permissions. All accessories and interior finishes such as wallpaper, chandeliers, furniture, electronics, white goods, curtains, hard and soft landscaping, pavements, features, gym, swimming pool(s) and other elements displayed in the brochure, or within the show apartment or between the plot boundary and the unit, are not part of the unit and are shown for illustrative purposes only.

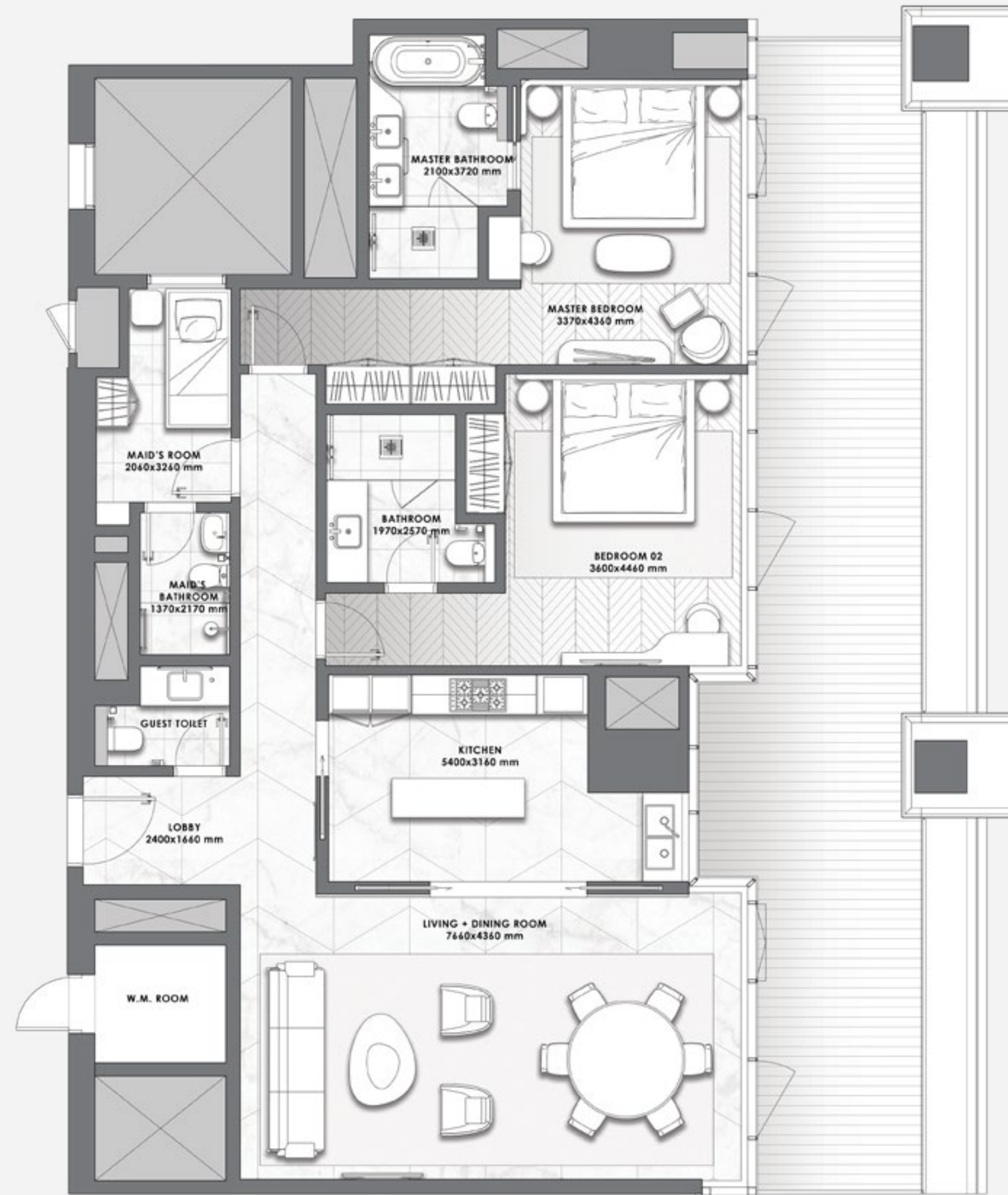
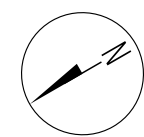
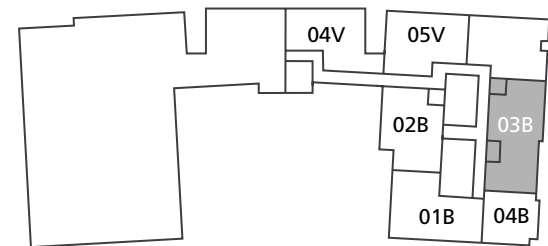
2 BEDROOMS

– 03 SERIES –



FLOOR 2

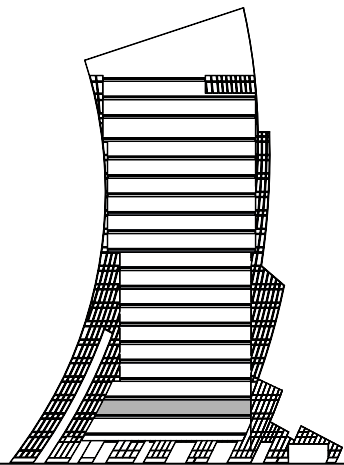
Suite Area	1,575.62 sq.ft.
Balcony Area	508.59 sq.ft.
Total Area	2,084.21 sq.ft.



All pictures, plans, layouts, information, data and details included in this brochure are indicative only and may change at any time up to the final 'as built' status in accordance with final designs of the project, regulatory approvals and planning permissions. All accessories and interior finishes such as wallpaper, chandeliers, furniture, electronics, white goods, curtains, hard and soft landscaping, pavements, features, gym, swimming pool(s) and other elements displayed in the brochure, or within the show apartment or between the plot boundary and the unit, are not part of the unit and are shown for illustrative purposes only.

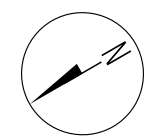
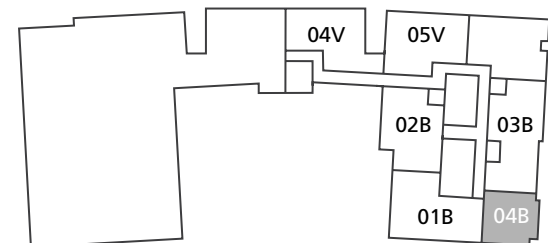
2 BEDROOMS

– 04 SERIES –



FLOOR 2

Suite Area	1,473.58 sq.ft.
Balcony Area	384.38 sq.ft.
Total Area	1,857.96 sq.ft.



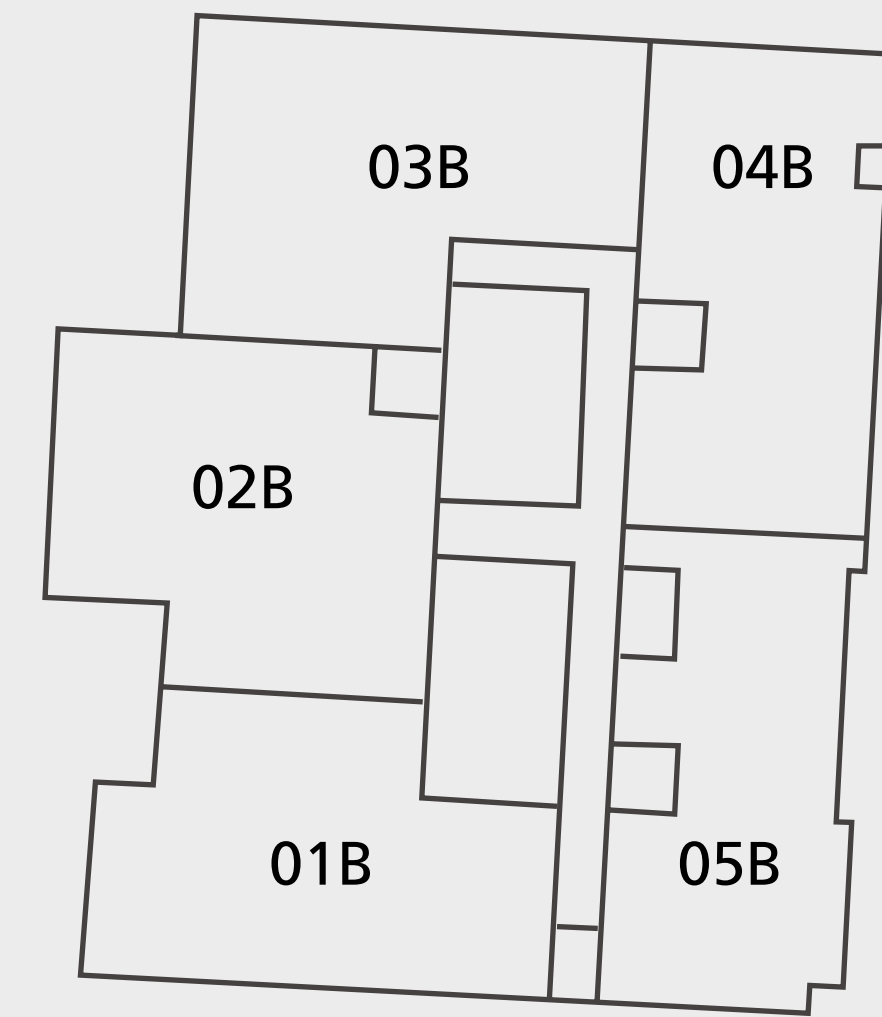
All pictures, plans, layouts, information, data and details included in this brochure are indicative only and may change at any time up to the final 'as built' status in accordance with final designs of the project, regulatory approvals and planning permissions. All accessories and interior finishes such as wallpaper, chandeliers, furniture, electronics, white goods, curtains, hard and soft landscaping, pavements, features, gym, swimming pool(s) and other elements displayed in the brochure, or within the show apartment or between the plot boundary and the unit, are not part of the unit and are shown for illustrative purposes only.

DAR AL ARKAN PAGANI TOWER

FLOORS 3 – 10

- LAYOUT PLAN -

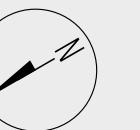
DUBAI CANAL



All pictures, plans, layouts, information, data and details included in this brochure are indicative only and may change at any time up to the final 'as built' status in accordance with final designs of the project, regulatory approvals and planning permissions. All accessories and interior finishes such as wallpaper, chandeliers, furniture, electronics, white goods, curtains, hard and soft landscaping, pavements, features, gym, swimming pool(s) and other elements displayed in the brochure, or within the show apartment or between the plot boundary and the unit, are not part of the unit and are shown for illustrative purposes only.

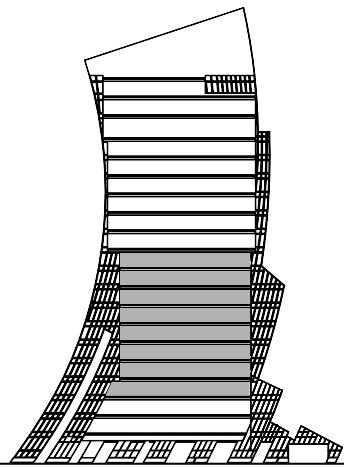


BURJ KHALIFA



2 BEDROOMS

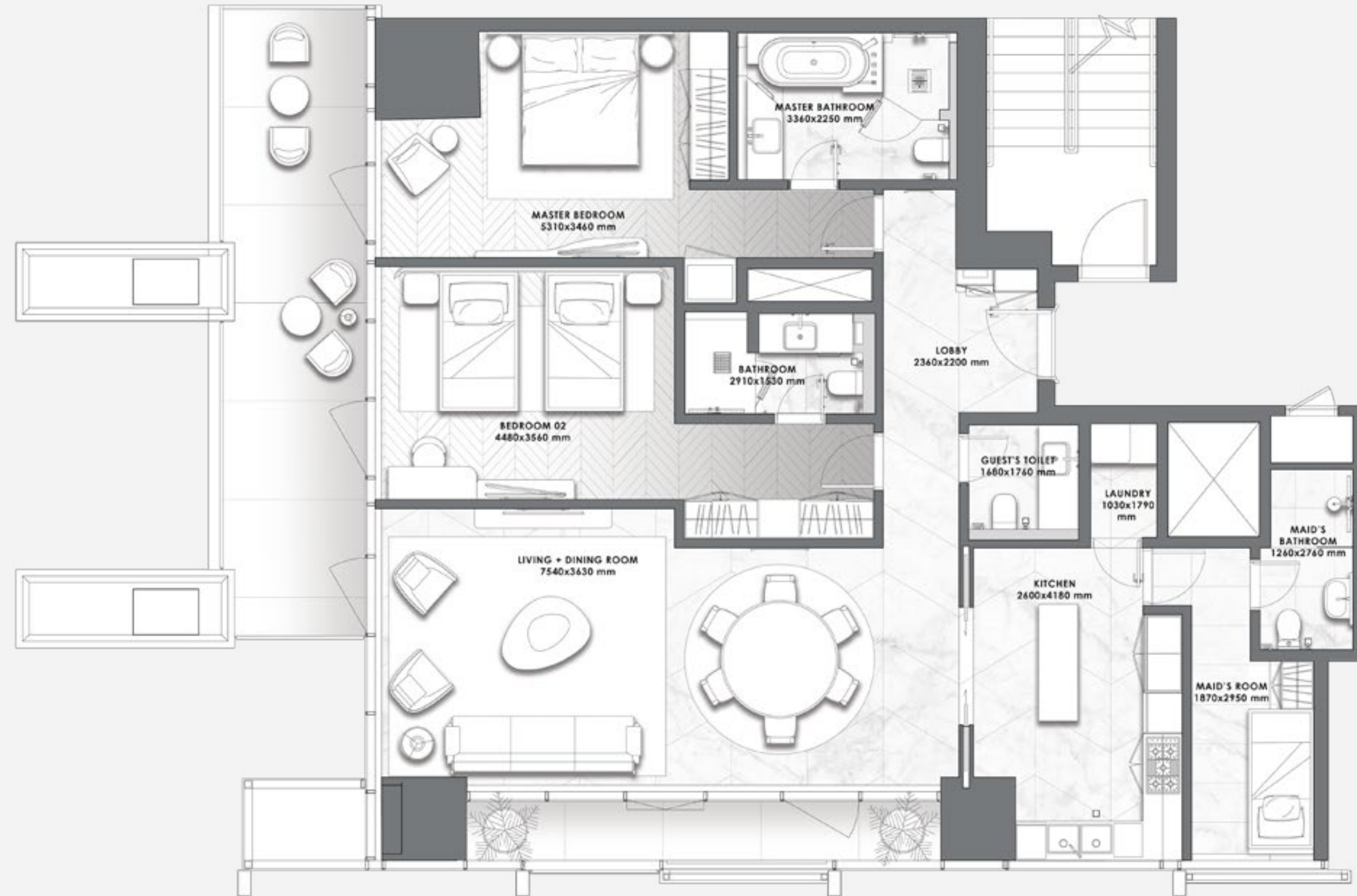
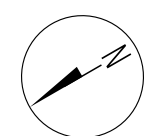
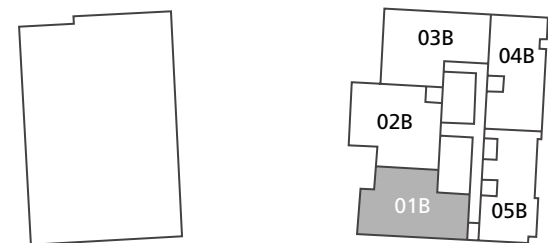
– 01 SERIES –



FLOORS

3 to 10

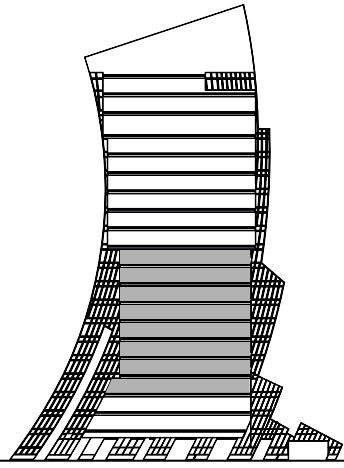
Suite Area	1,575 - 1,579 sq.ft.
Balcony Area	209 - 360 sq.ft.
Total Area	1,784 - 1,937 sq.ft.



All pictures, plans, layouts, information, data and details included in this brochure are indicative only and may change at any time up to the final 'as built' status in accordance with final designs of the project, regulatory approvals and planning permissions. All accessories and interior finishes such as wallpaper, chandeliers, furniture, electronics, white goods, curtains, hard and soft landscaping, pavements, features, gym, swimming pool(s) and other elements displayed in the brochure, or within the show apartment or between the plot boundary and the unit, are not part of the unit and are shown for illustrative purposes only.

2 BEDROOMS

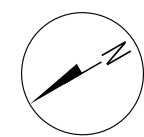
– 02 SERIES –



FLOORS

3 to 10

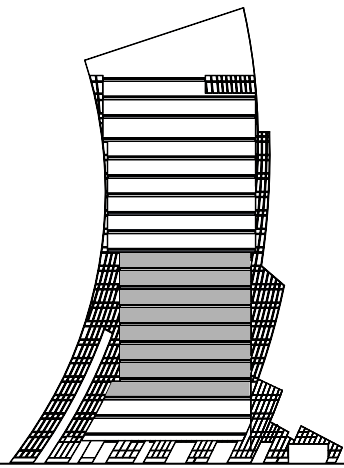
Suite Area	1,712 - 1,715 sq.ft.
Balcony Area	210 - 435 sq.ft.
Total Area	1,921 - 2,149 sq.ft.



All pictures, plans, layouts, information, data and details included in this brochure are indicative only and may change at any time up to the final 'as built' status in accordance with final designs of the project, regulatory approvals and planning permissions. All accessories and interior finishes such as wallpaper, chandeliers, furniture, electronics, white goods, curtains, hard and soft landscaping, pavements, features, gym, swimming pool(s) and other elements displayed in the brochure, or within the show apartment or between the plot boundary and the unit, are not part of the unit and are shown for illustrative purposes only.

3 BEDROOMS

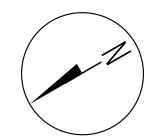
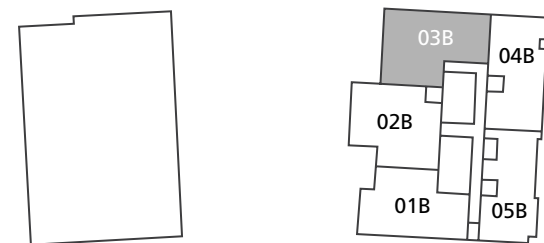
– 03 SERIES –



FLOORS

3 to 10

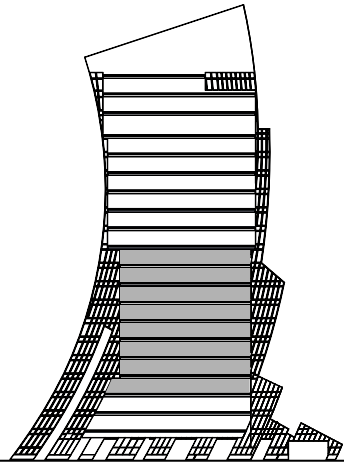
Suite Area	2,105 - 2,187 sq.ft.
Balcony Area	473 - 732 sq.ft.
Total Area	2,658 - 2,919 sq.ft.



All pictures, plans, layouts, information, data and details included in this brochure are indicative only and may change at any time up to the final 'as built' status in accordance with final designs of the project, regulatory approvals and planning permissions. All accessories and interior finishes such as wallpaper, chandeliers, furniture, electronics, white goods, curtains, hard and soft landscaping, pavements, features, gym, swimming pool(s) and other elements displayed in the brochure, or within the show apartment or between the plot boundary and the unit, are not part of the unit and are shown for illustrative purposes only.

4 BEDROOMS

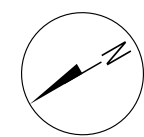
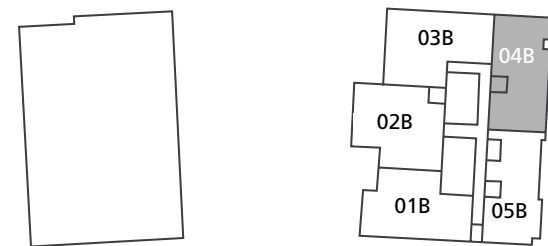
– 04 SERIES –



FLOORS

3 to 10

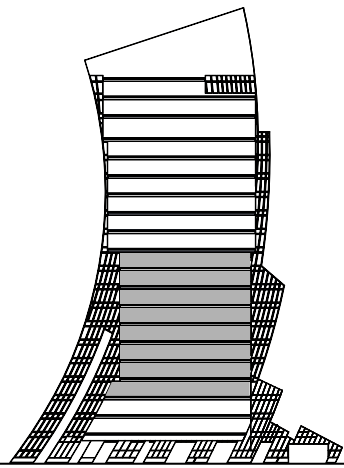
Suite Area	2,074 - 2,079 sq.ft.
Balcony Area	650 - 762 sq.ft.
Total Area	2,729 - 2,836 sq.ft.



All pictures, plans, layouts, information, data and details included in this brochure are indicative only and may change at any time up to the final 'as built' status in accordance with final designs of the project, regulatory approvals and planning permissions. All accessories and interior finishes such as wallpaper, chandeliers, furniture, electronics, white goods, curtains, hard and soft landscaping, pavements, features, gym, swimming pool(s) and other elements displayed in the brochure, or within the show apartment or between the plot boundary and the unit, are not part of the unit and are shown for illustrative purposes only.

3 BEDROOMS

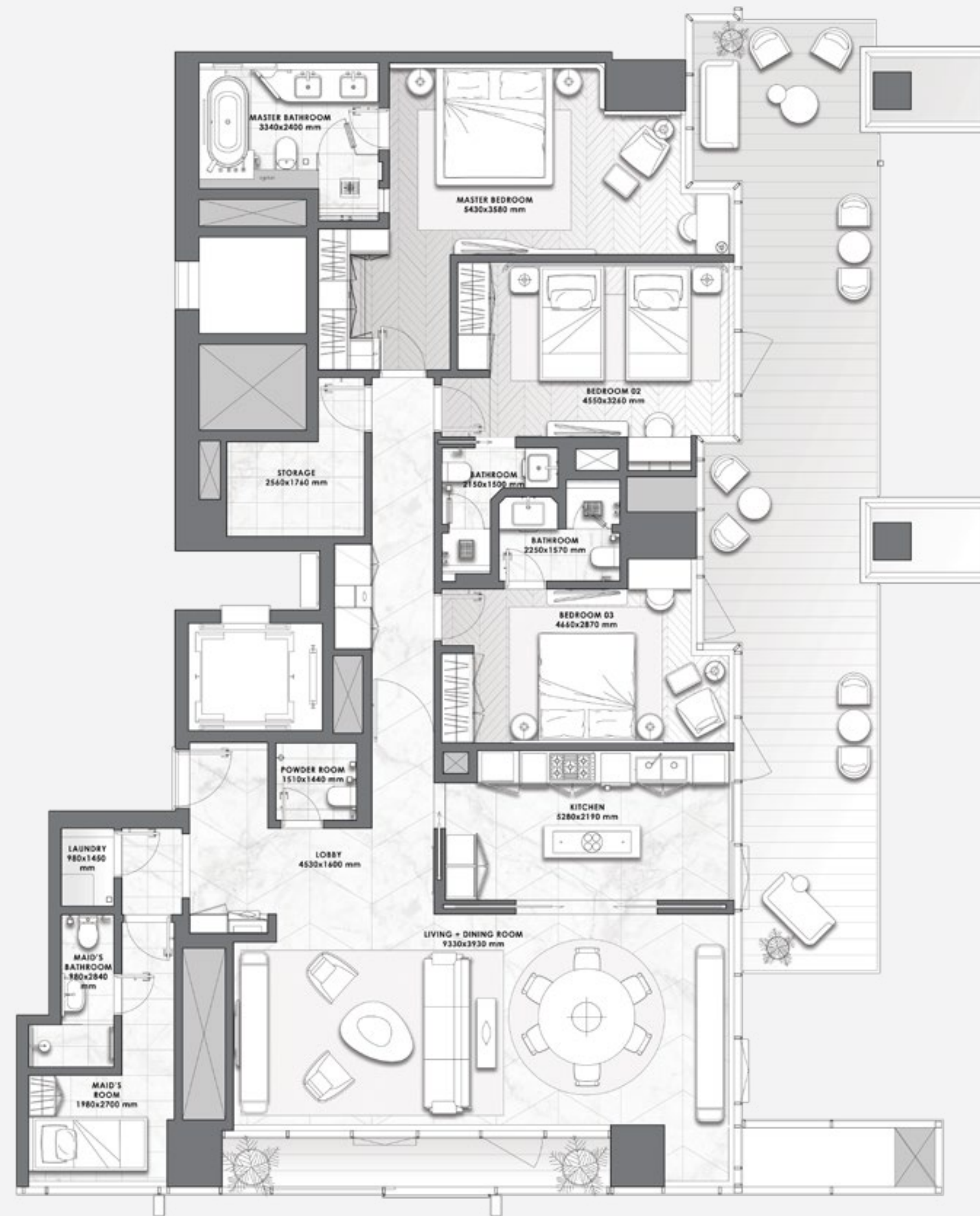
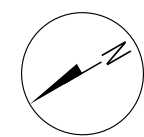
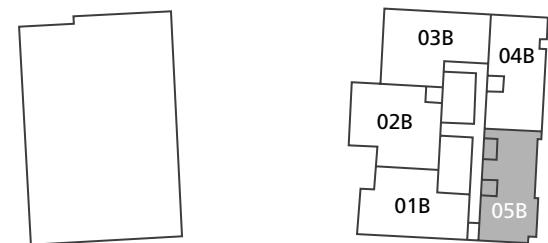
– 05 SERIES –



FLOORS

3 to 10

Suite Area	2,125 - 2,135 sq.ft.
Balcony Area	627 - 630 sq.ft.
Total Area	2,752 - 2,765 sq.ft.



All pictures, plans, layouts, information, data and details included in this brochure are indicative only and may change at any time up to the final 'as built' status in accordance with final designs of the project, regulatory approvals and planning permissions. All accessories and interior finishes such as wallpaper, chandeliers, furniture, electronics, white goods, curtains, hard and soft landscaping, pavements, features, gym, swimming pool(s) and other elements displayed in the brochure, or within the show apartment or between the plot boundary and the unit, are not part of the unit and are shown for illustrative purposes only.

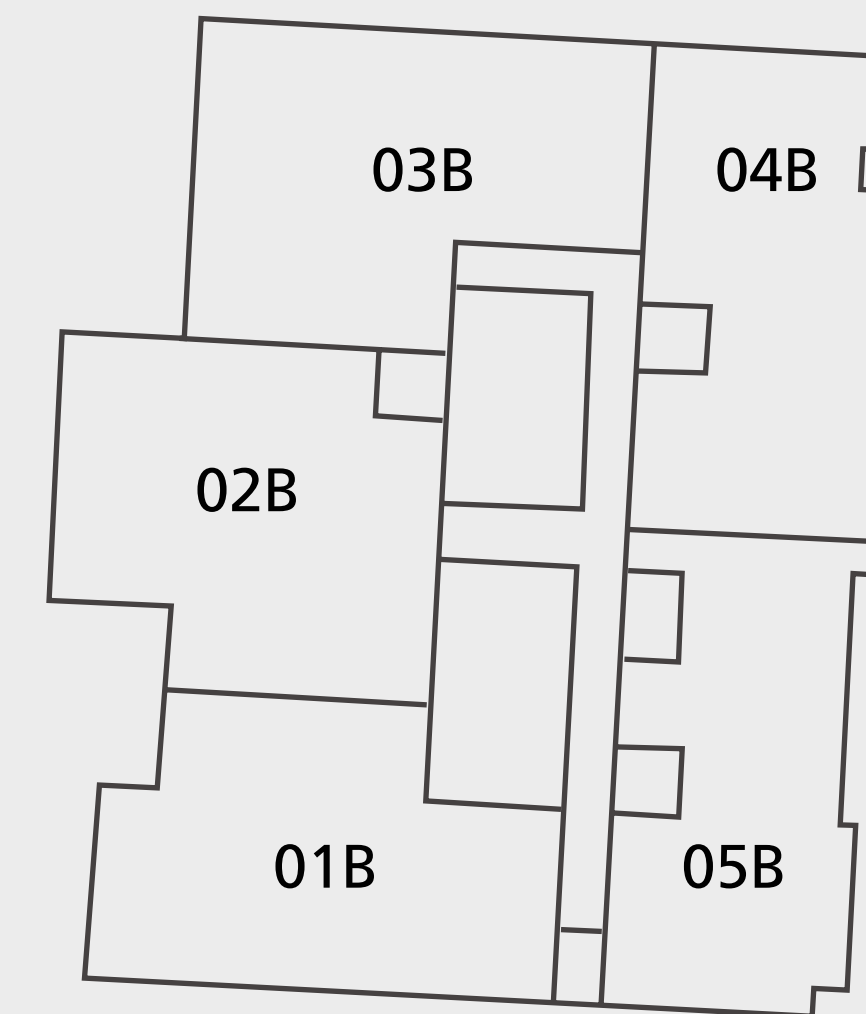
DAR AL ARKAN PAGANI TOWER

FLOORS 11 – 16

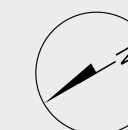
- LAYOUT PLAN -

All pictures, plans, layouts, information, data and details included in this brochure are indicative only and may change at any time up to the final 'as built' status in accordance with final designs of the project, regulatory approvals and planning permissions. All accessories and interior finishes such as wallpaper, chandeliers, furniture, electronics, white goods, curtains, hard and soft landscaping, pavements, features, gym, swimming pool(s) and other elements displayed in the brochure, or within the show apartment or between the plot boundary and the unit, are not part of the unit and are shown for illustrative purposes only.

DUBAI CANAL

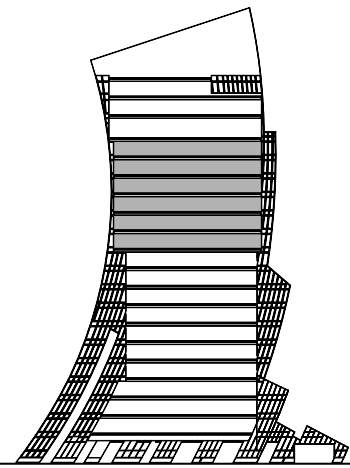


BURJ KHALIFA



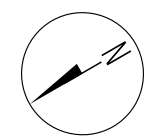
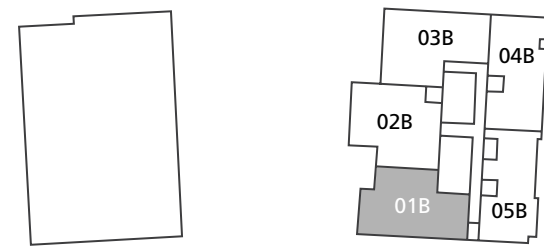
2 BEDROOMS

– 01 SERIES –



FLOORS
11 to 16

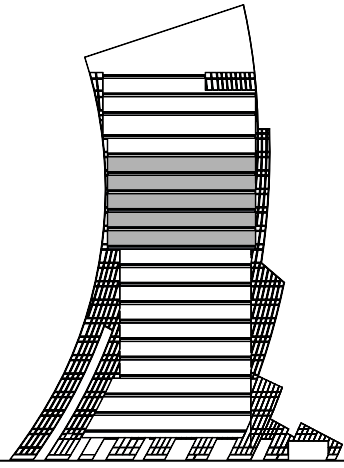
Suite Area	1,829 - 1,852 sq.ft.
Balcony Area	171 - 257 sq.ft.
Total Area	2,023 - 2,101 sq.ft.



All pictures, plans, layouts, information, data and details included in this brochure are indicative only and may change at any time up to the final 'as built' status in accordance with final designs of the project, regulatory approvals and planning permissions. All accessories and interior finishes such as wallpaper, chandeliers, furniture, electronics, white goods, curtains, hard and soft landscaping, pavements, features, gym, swimming pool(s) and other elements displayed in the brochure, or within the show apartment or between the plot boundary and the unit, are not part of the unit and are shown for illustrative purposes only.

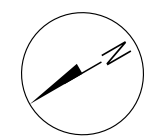
2 BEDROOMS

– 02 SERIES –



FLOORS
11 to 15

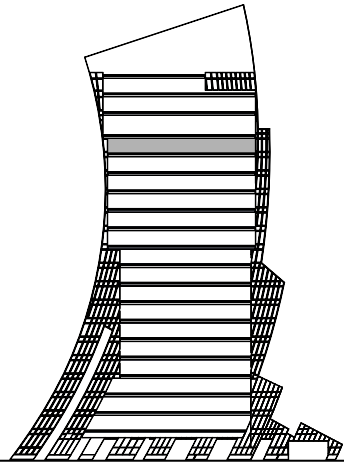
Suite Area	1,898 sq.ft.
Balcony Area	44 - 198 sq.ft.
Total Area	1,942 - 2,097 sq.ft.



All pictures, plans, layouts, information, data and details included in this brochure are indicative only and may change at any time up to the final 'as built' status in accordance with final designs of the project, regulatory approvals and planning permissions. All accessories and interior finishes such as wallpaper, chandeliers, furniture, electronics, white goods, curtains, hard and soft landscaping, pavements, features, gym, swimming pool(s) and other elements displayed in the brochure, or within the show apartment or between the plot boundary and the unit, are not part of the unit and are shown for illustrative purposes only.

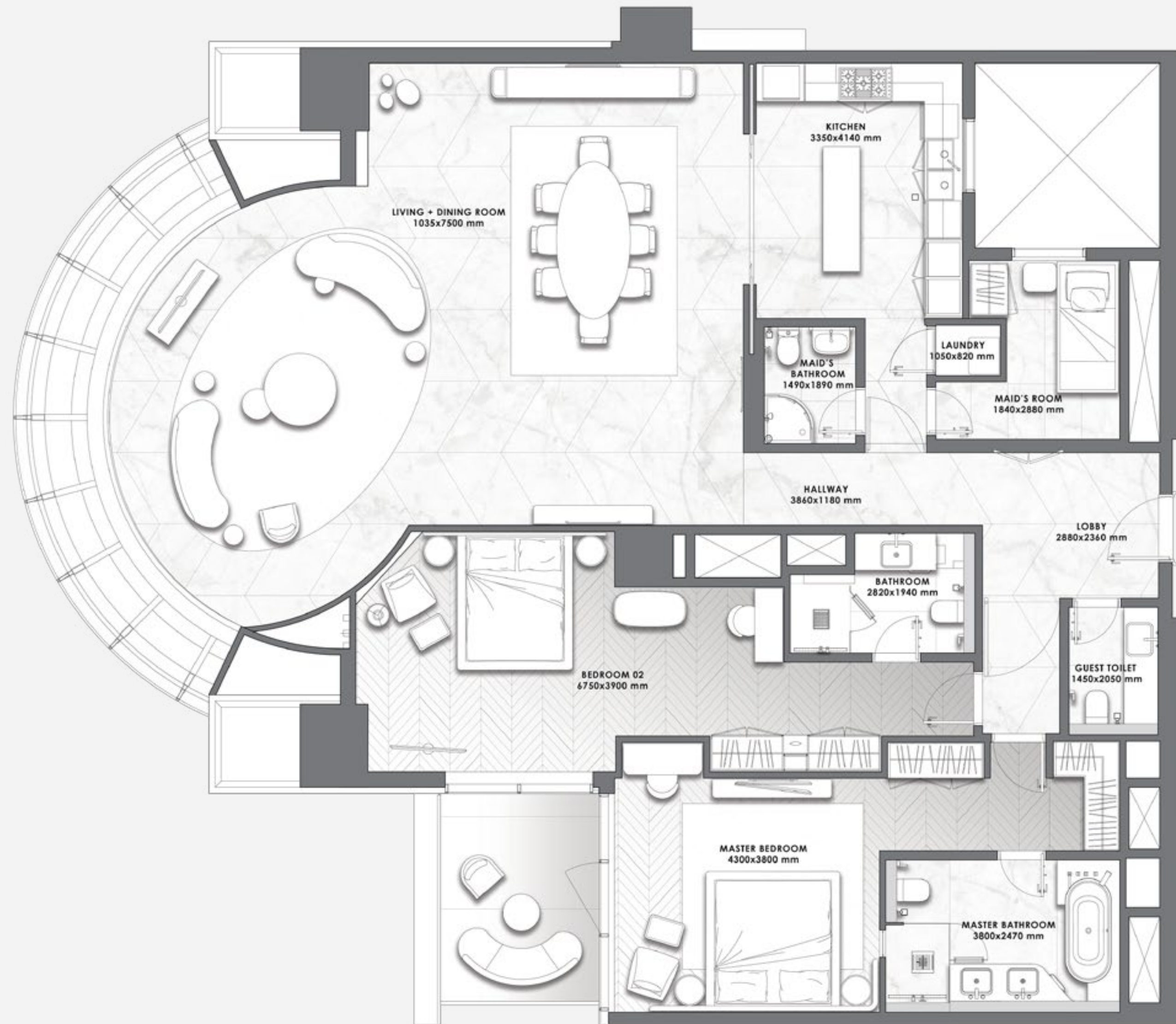
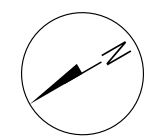
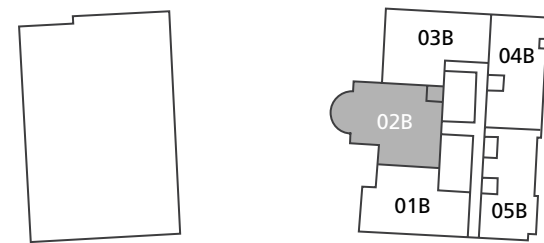
2 BEDROOMS

– 02 SERIES –



FLOOR 16

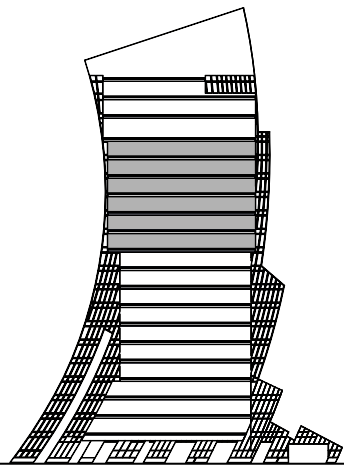
Suite Area	2,123.83 sq.ft.
Balcony Area	96.44 sq.ft.
Total Area	2,220.27 sq.ft.



All pictures, plans, layouts, information, data and details included in this brochure are indicative only and may change at any time up to the final 'as built' status in accordance with final designs of the project, regulatory approvals and planning permissions. All accessories and interior finishes such as wallpaper, chandeliers, furniture, electronics, white goods, curtains, hard and soft landscaping, pavements, features, gym, swimming pool(s) and other elements displayed in the brochure, or within the show apartment or between the plot boundary and the unit, are not part of the unit and are shown for illustrative purposes only.

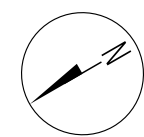
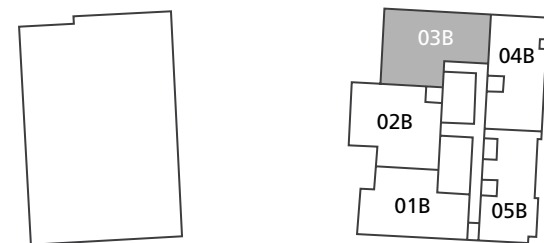
3 BEDROOMS

– 03 SERIES –



FLOORS
11 to 16

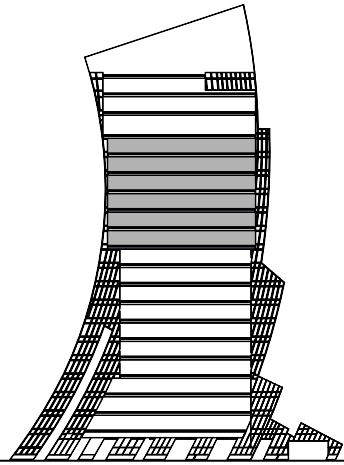
Suite Area	2,100 - 2,209 sq.ft.
Balcony Area	464 - 656 sq.ft.
Total Area	2,571 - 2,850 sq.ft.



All pictures, plans, layouts, information, data and details included in this brochure are indicative only and may change at any time up to the final 'as built' status in accordance with final designs of the project, regulatory approvals and planning permissions. All accessories and interior finishes such as wallpaper, chandeliers, furniture, electronics, white goods, curtains, hard and soft landscaping, pavements, features, gym, swimming pool(s) and other elements displayed in the brochure, or within the show apartment or between the plot boundary and the unit, are not part of the unit and are shown for illustrative purposes only.

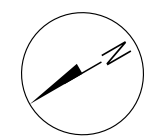
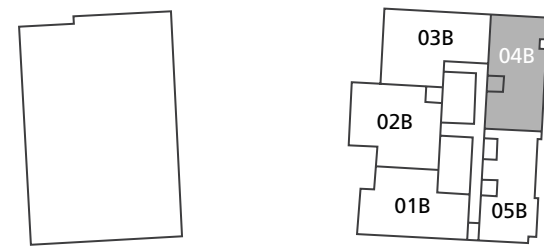
4 BEDROOMS

– 04 SERIES –



FLOORS
11 to 16

Suite Area	2,327 - 2,332 sq.ft.
Balcony Area	523 - 569 sq.ft.
Total Area	2,819 - 2,898 sq.ft.

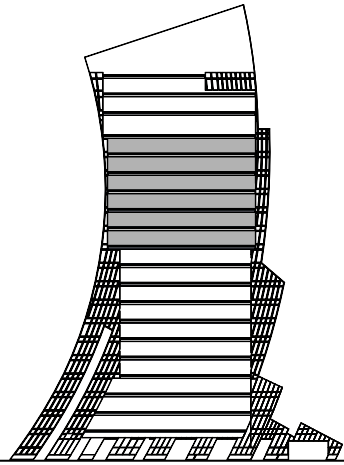


All pictures, plans, layouts, information, data and details included in this brochure are indicative only and may change at any time up to the final 'as built' status in accordance with final designs of the project, regulatory approvals and planning permissions. All accessories and interior finishes such as wallpaper, chandeliers, furniture, electronics, white goods, curtains, hard and soft landscaping, pavements, features, gym, swimming pool(s) and other elements displayed in the brochure, or within the show apartment or between the plot boundary and the unit, are not part of the unit and are shown for illustrative purposes only.



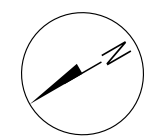
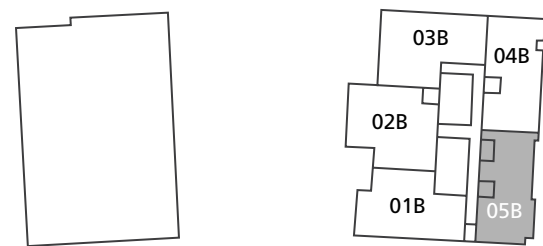
3 BEDROOMS

– 05 SERIES –

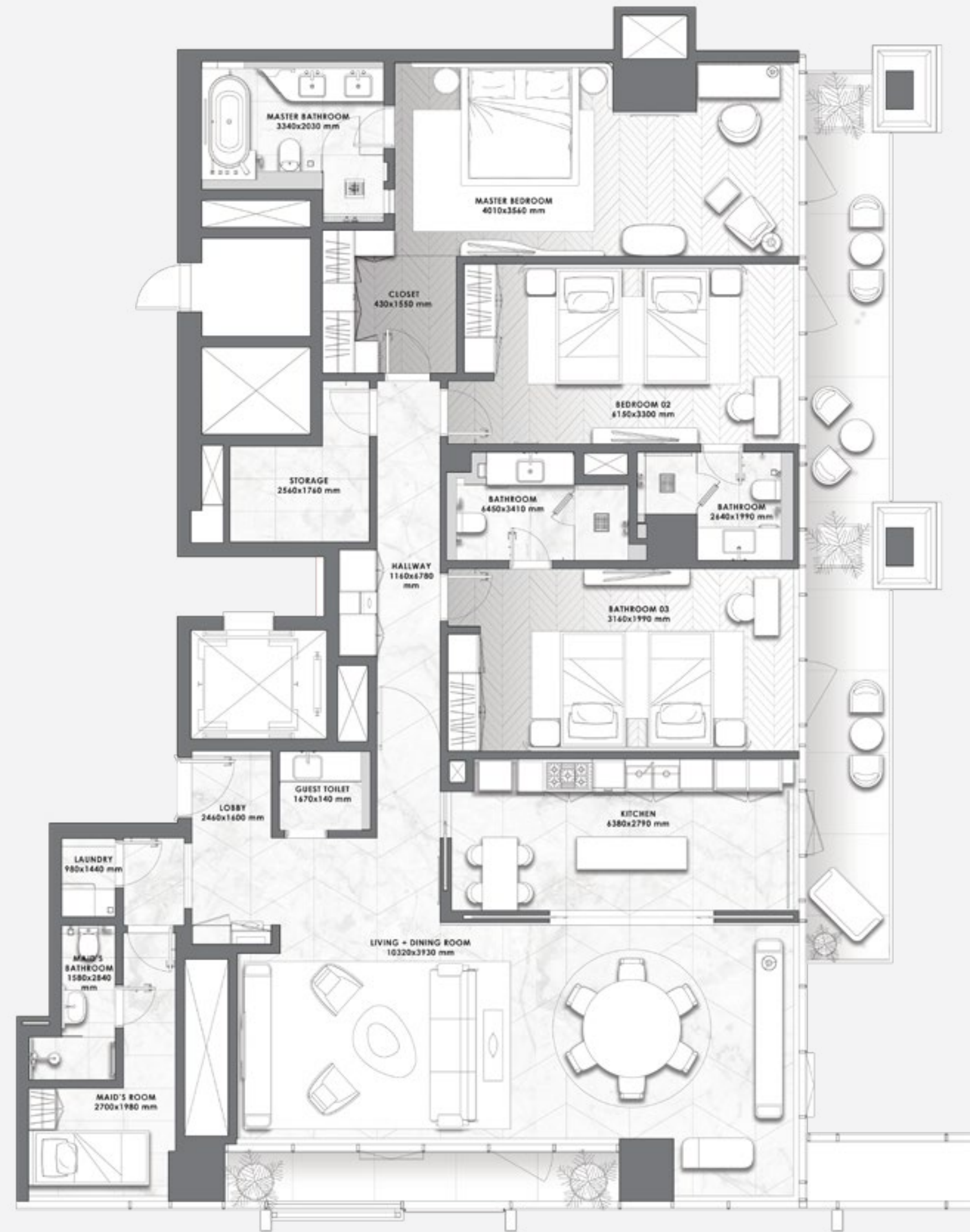


FLOORS
11 to 16

Suite Area	2,401.75 - 2,412.95 sq.ft.
Balcony Area	364.36 - 364.90 sq.ft.
Total Area	2,766.11 - 2,777.84 sq.ft.



All pictures, plans, layouts, information, data and details included in this brochure are indicative only and may change at any time up to the final 'as built' status in accordance with final designs of the project, regulatory approvals and planning permissions. All accessories and interior finishes such as wallpaper, chandeliers, furniture, electronics, white goods, curtains, hard and soft landscaping, pavements, features, gym, swimming pool(s) and other elements displayed in the brochure, or within the show apartment or between the plot boundary and the unit, are not part of the unit and are shown for illustrative purposes only.

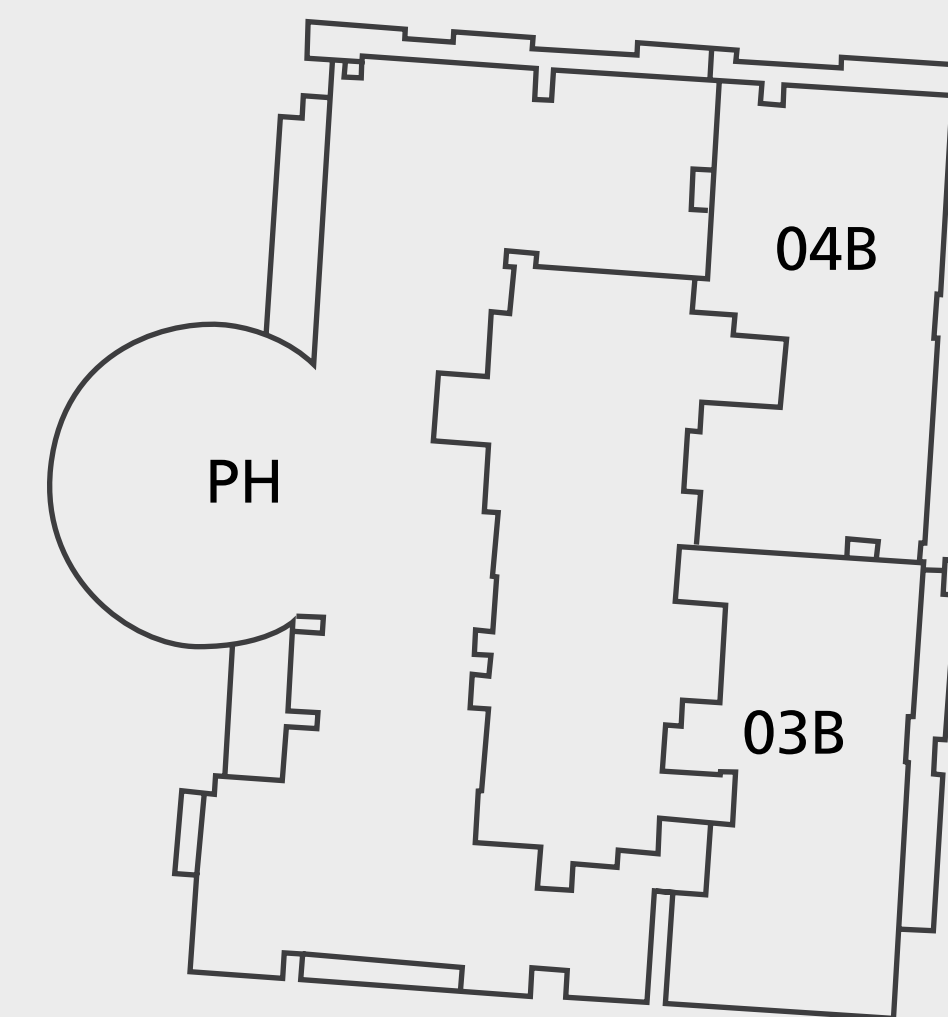


DAR AL ARKAN PAGANI TOWER

FLOOR 17

- LAYOUT PLAN -

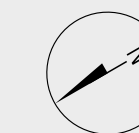
DUBAI CANAL



All pictures, plans, layouts, information, data and details included in this brochure are indicative only and may change at any time up to the final 'as built' status in accordance with final designs of the project, regulatory approvals and planning permissions. All accessories and interior finishes such as wallpaper, chandeliers, furniture, electronics, white goods, curtains, hard and soft landscaping, pavements, features, gym, swimming pool(s) and other elements displayed in the brochure, or within the show apartment or between the plot boundary and the unit, are not part of the unit and are shown for illustrative purposes only.

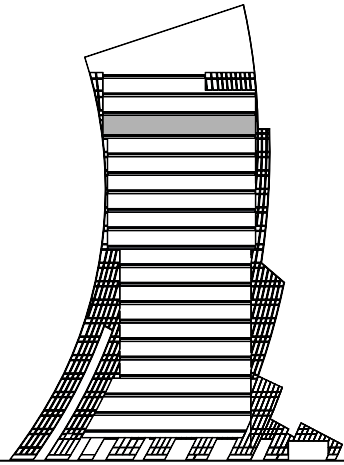


BURJ KHALIFA



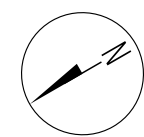
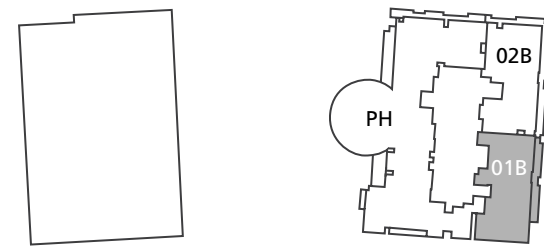
3 BEDROOMS

– 01 SERIES –

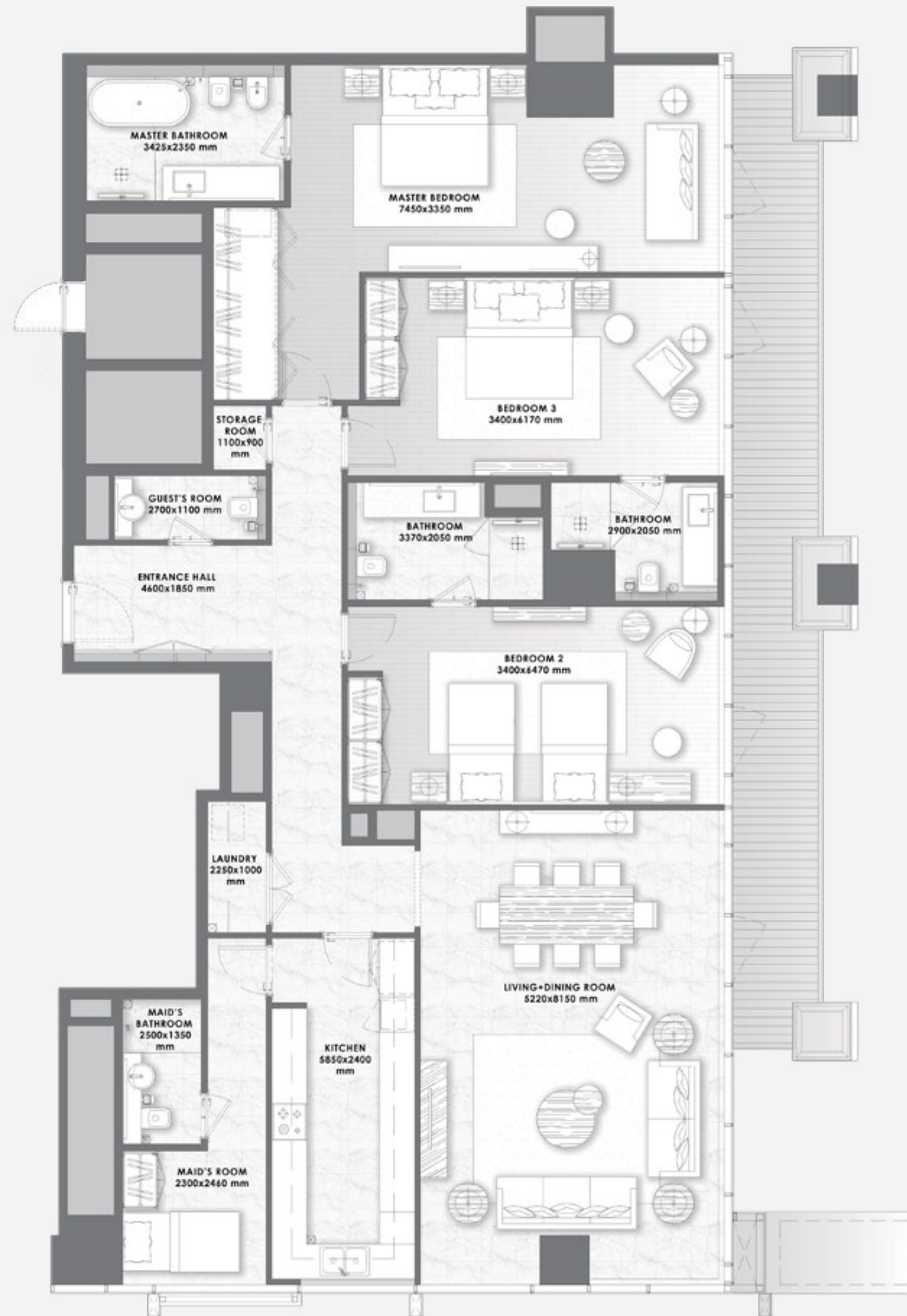


FLOOR 17

Suite Area	2,243.31 sq.ft.
Balcony Area	269.74 sq.ft.
Total Area	2,513.05 sq.ft.

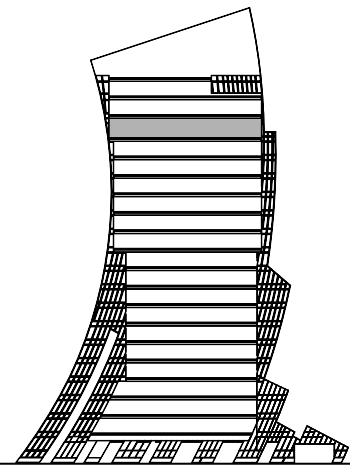


All pictures, plans, layouts, information, data and details included in this brochure are indicative only and may change at any time up to the final 'as built' status in accordance with final designs of the project, regulatory approvals and planning permissions. All accessories and interior finishes such as wallpaper, chandeliers, furniture, electronics, white goods, curtains, hard and soft landscaping, pavements, features, gym, swimming pool(s) and other elements displayed in the brochure, or within the show apartment or between the plot boundary and the unit, are not part of the unit and are shown for illustrative purposes only.



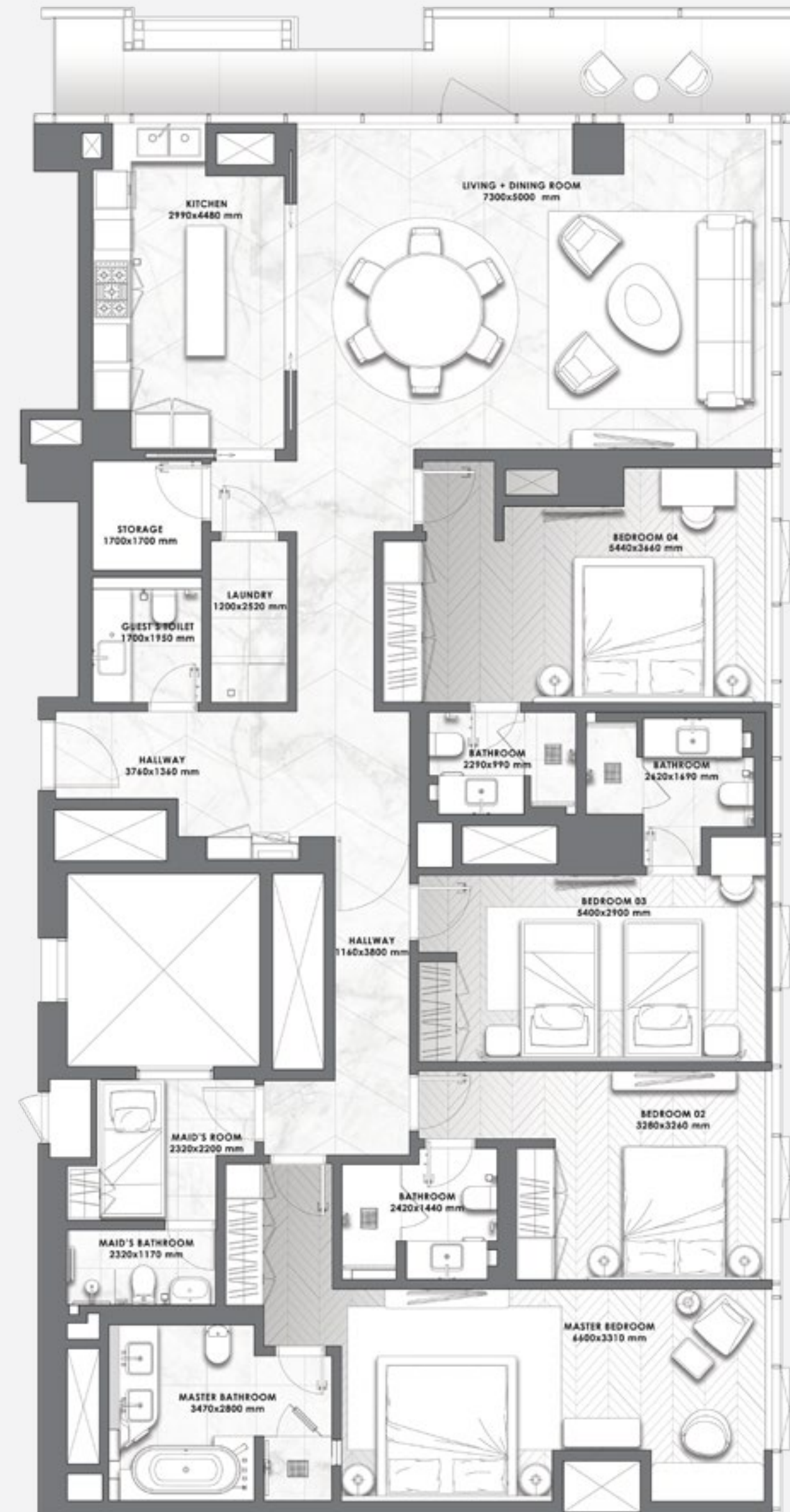
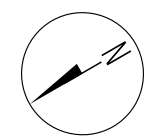
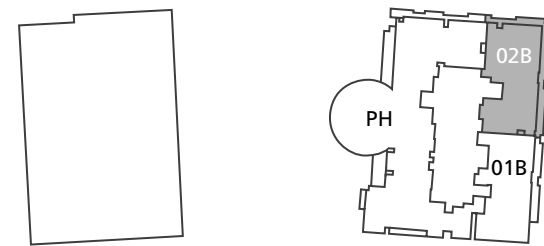
4 BEDROOMS

– 02 SERIES –



FLOOR 17

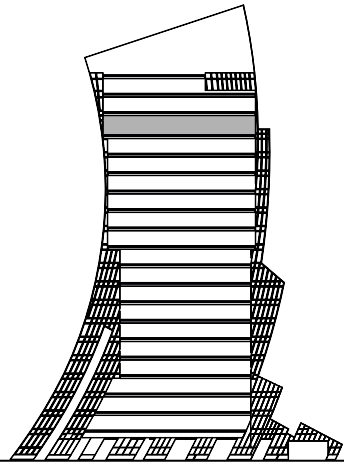
Suite Area	2,349 sq.ft.
Balcony Area	520 sq.ft.
Total Area	2,869 sq.ft.



All pictures, plans, layouts, information, data and details included in this brochure are indicative only and may change at any time up to the final 'as built' status in accordance with final designs of the project, regulatory approvals and planning permissions. All accessories and interior finishes such as wallpaper, chandeliers, furniture, electronics, white goods, curtains, hard and soft landscaping, pavements, features, gym, swimming pool(s) and other elements displayed in the brochure, or within the show apartment or between the plot boundary and the unit, are not part of the unit and are shown for illustrative purposes only.

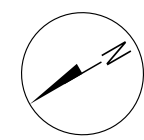
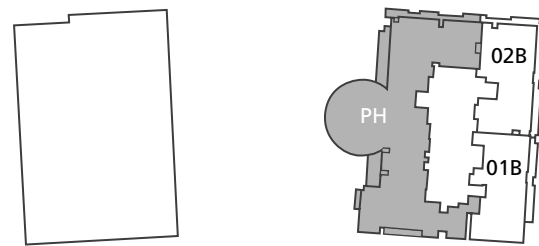
THE PENTHOUSE

- OPTION 1 -

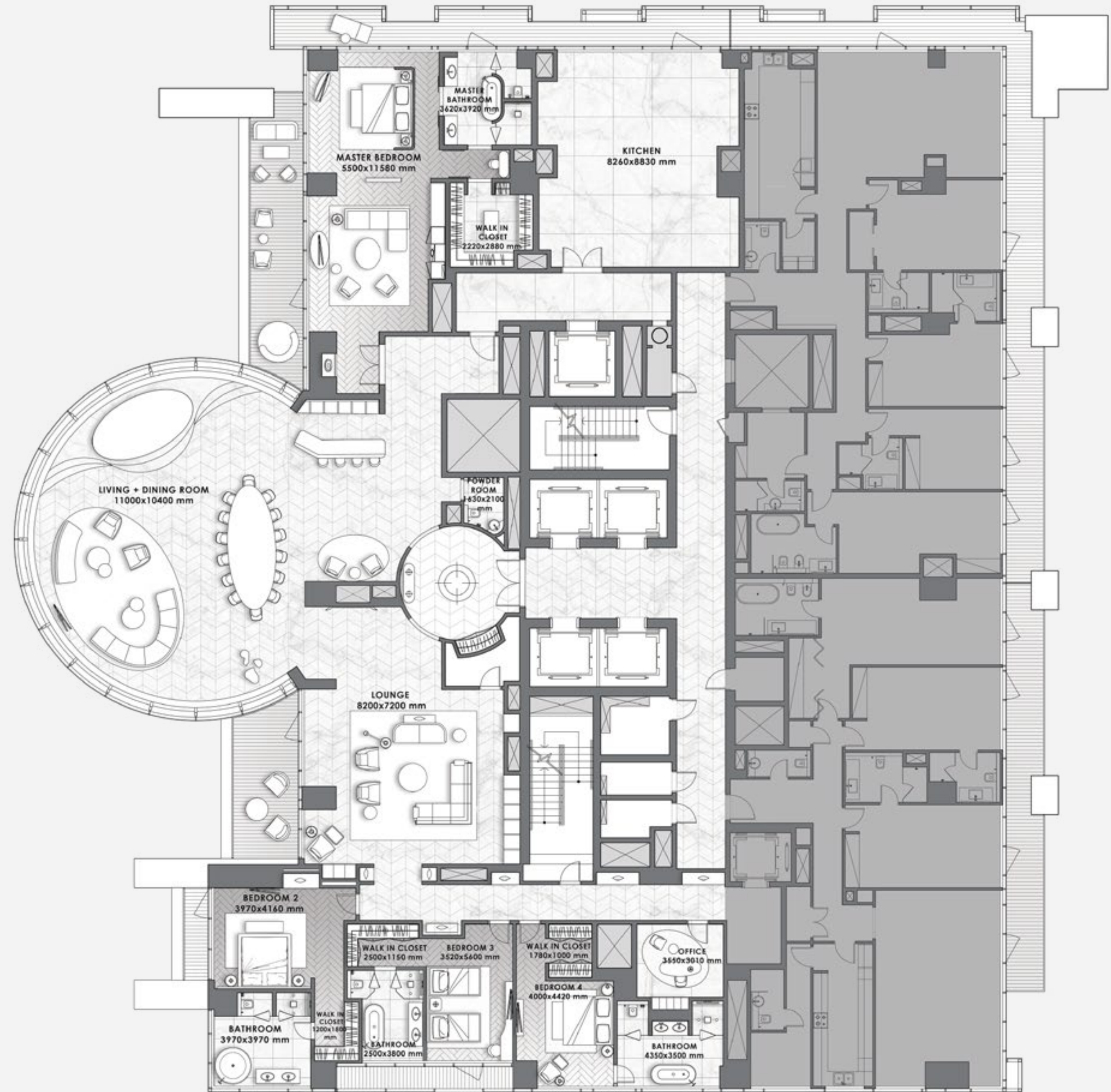


FLOOR
17

Suite Area	7,357.35 sq.ft.
Balcony Area	849.70 sq.ft.
Total Area	8,207.05 sq.ft.

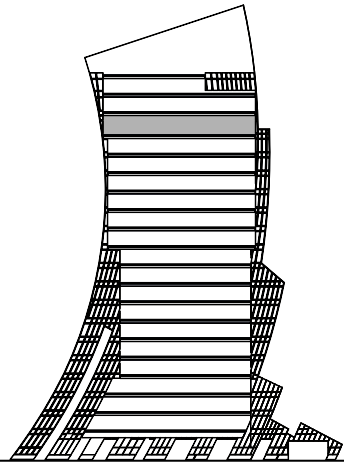


All pictures, plans, layouts, information, data and details included in this brochure are indicative only and may change at any time up to the final 'as built' status in accordance with final designs of the project, regulatory approvals and planning permissions. All accessories and interior finishes such as wallpaper, chandeliers, furniture, electronics, white goods, curtains, hard and soft landscaping, pavements, features, gym, swimming pool(s) and other elements displayed in the brochure, or within the show apartment or between the plot boundary and the unit, are not part of the unit and are shown for illustrative purposes only.



THE PENTHOUSE

- OPTION 2 -

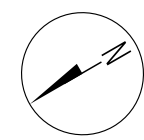
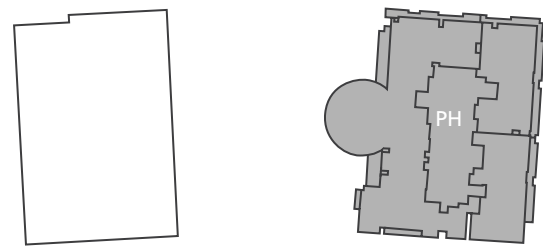


FLOOR
17

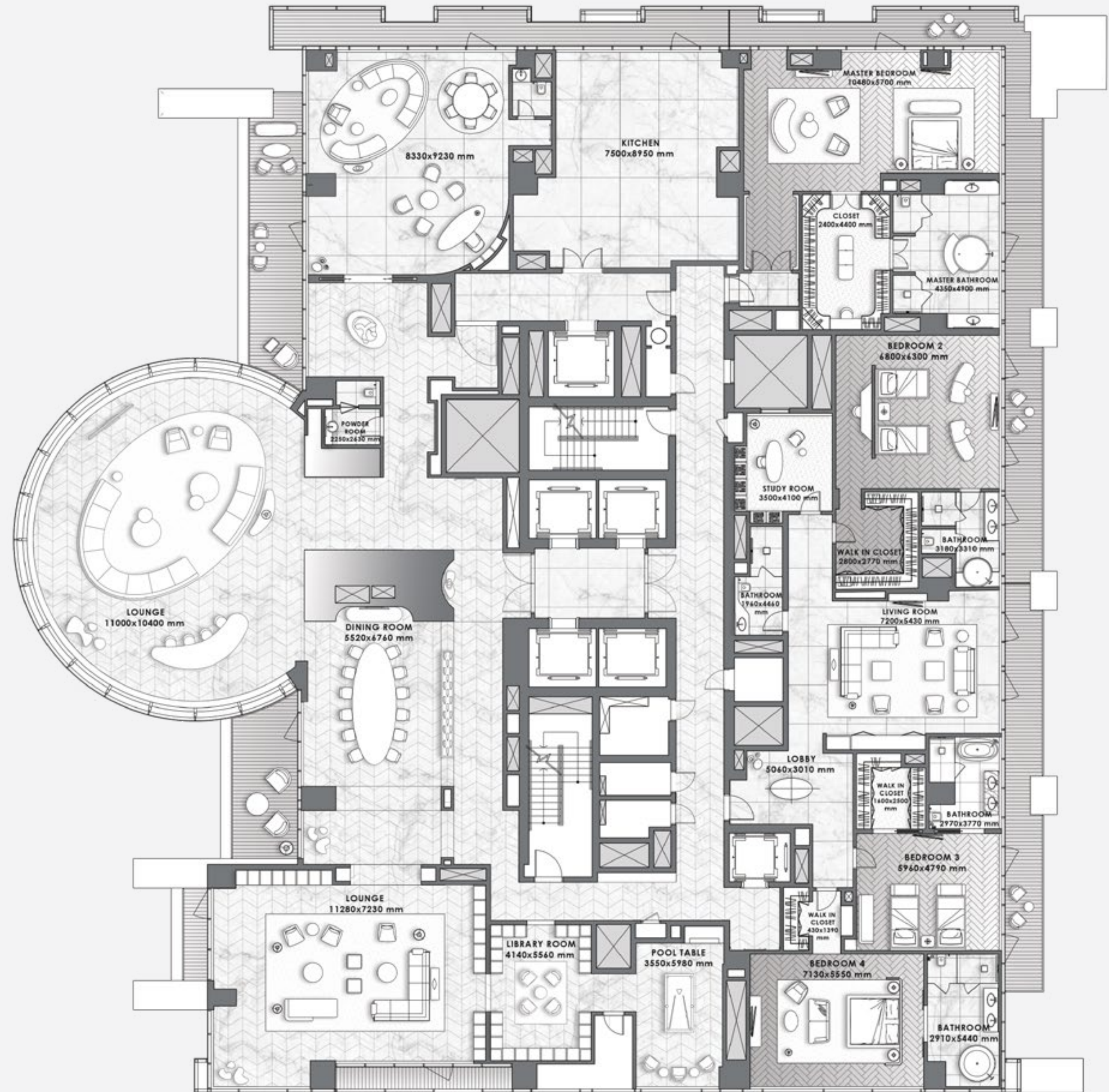
Suite Area 14,428 sq.ft.

Balcony Area

Total Area 14,428 sq.ft.



All pictures, plans, layouts, information, data and details included in this brochure are indicative only and may change at any time up to the final 'as built' status in accordance with final designs of the project, regulatory approvals and planning permissions. All accessories and interior finishes such as wallpaper, chandeliers, furniture, electronics, white goods, curtains, hard and soft landscaping, pavements, features, gym, swimming pool(s) and other elements displayed in the brochure, or within the show apartment or between the plot boundary and the unit, are not part of the unit and are shown for illustrative purposes only.

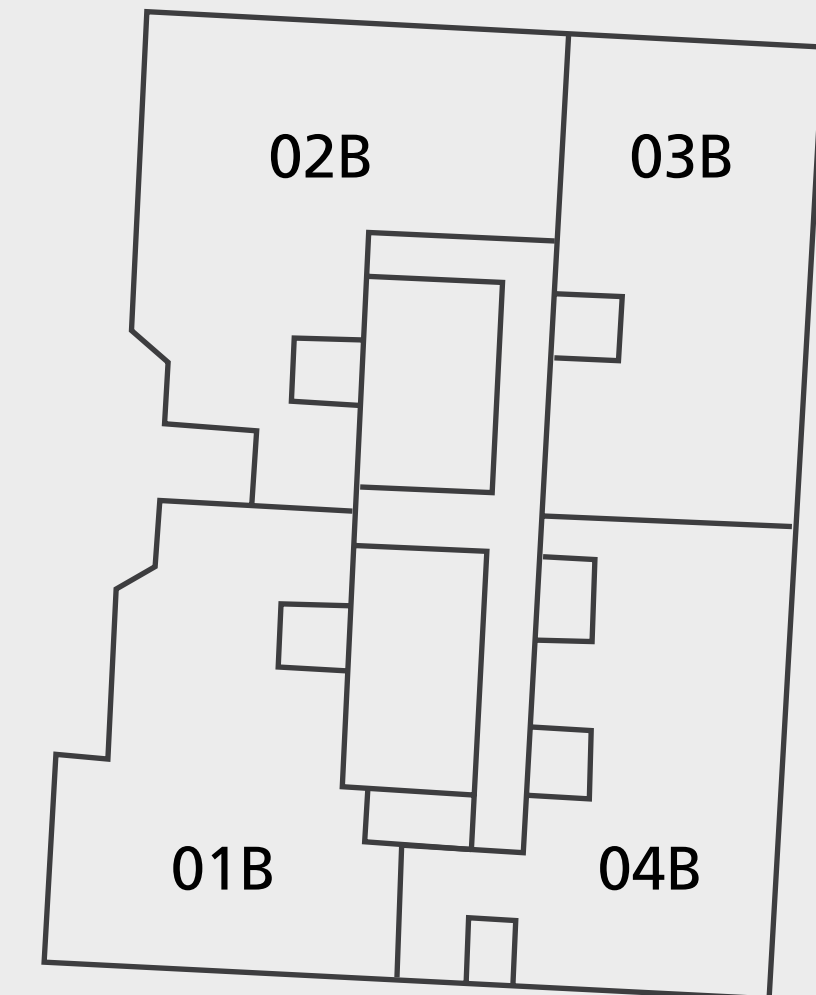


DAR AL ARKAN PAGANI TOWER

FLOOR 18

- LAYOUT PLAN -

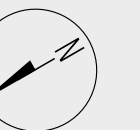
DUBAI CANAL



All pictures, plans, layouts, information, data and details included in this brochure are indicative only and may change at any time up to the final 'as built' status in accordance with final designs of the project, regulatory approvals and planning permissions. All accessories and interior finishes such as wallpaper, chandeliers, furniture, electronics, white goods, curtains, hard and soft landscaping, pavements, features, gym, swimming pool(s) and other elements displayed in the brochure, or within the show apartment or between the plot boundary and the unit, are not part of the unit and are shown for illustrative purposes only.

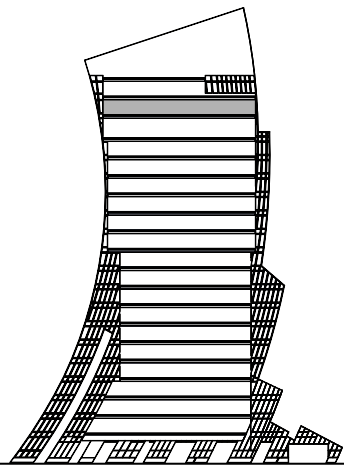


BURJ KHALIFA



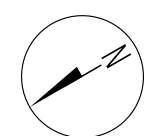
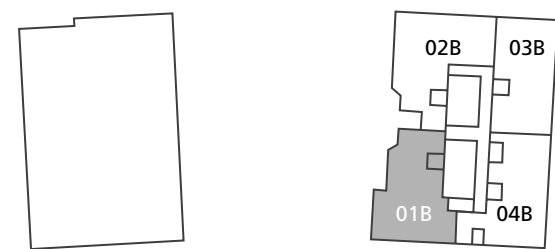
4 BEDROOMS

– 01 SERIES –

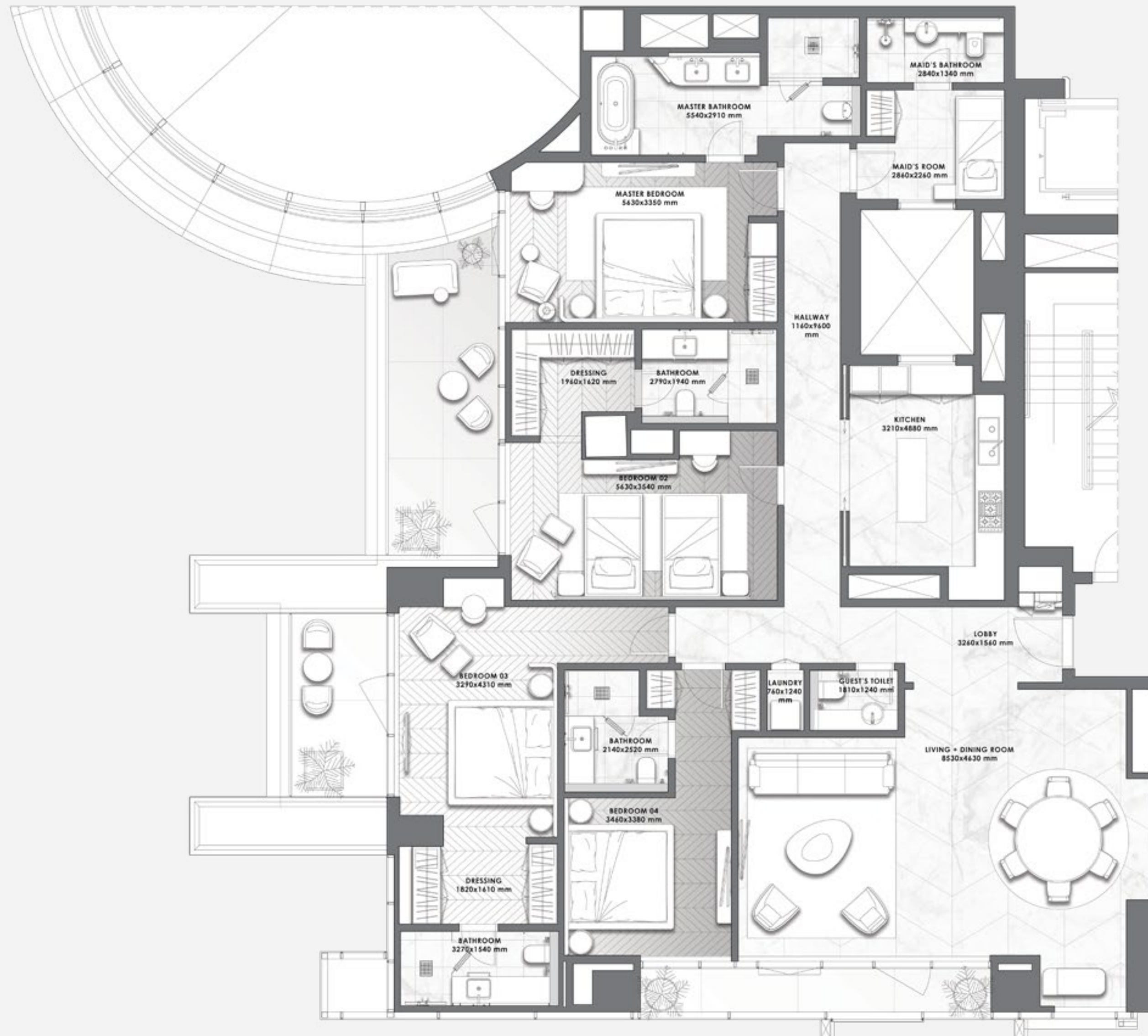


FLOOR 18

Suite Area	2,503.15 sq.ft.
Balcony Area	359.08 sq.ft.
Total Area	2,862.23 sq.ft.

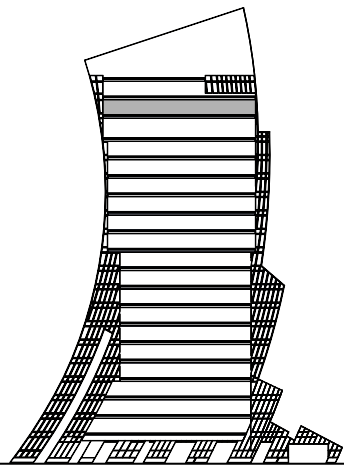


All pictures, plans, layouts, information, data and details included in this brochure are indicative only and may change at any time up to the final 'as built' status in accordance with final designs of the project, regulatory approvals and planning permissions. All accessories and interior finishes such as wallpaper, chandeliers, furniture, electronics, white goods, curtains, hard and soft landscaping, pavements, features, gym, swimming pool(s) and other elements displayed in the brochure, or within the show apartment or between the plot boundary and the unit, are not part of the unit and are shown for illustrative purposes only.



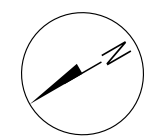
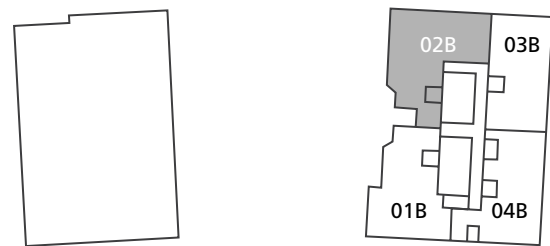
4 BEDROOMS

– 02 SERIES –

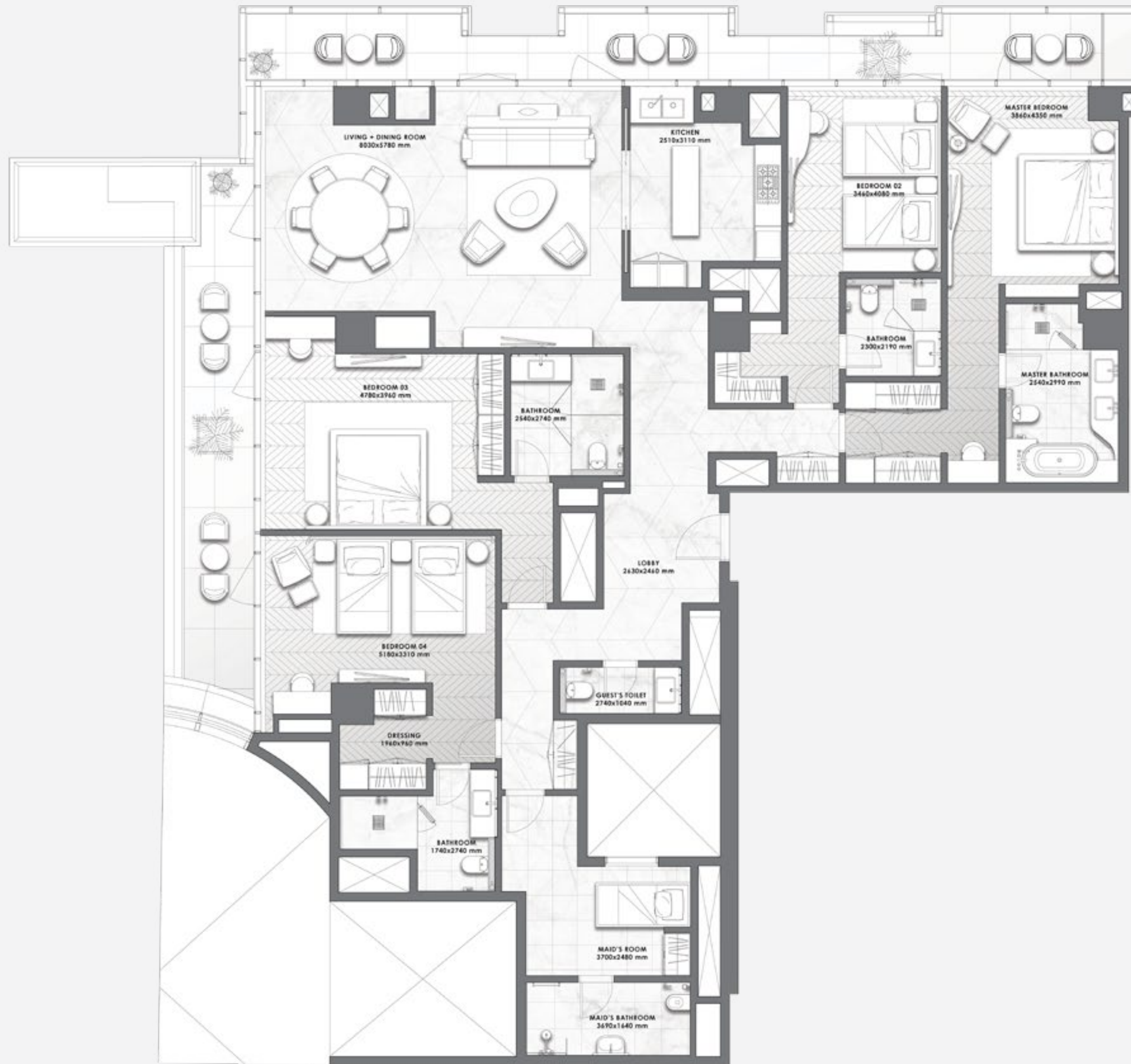


FLOOR 18

Suite Area	2,835.54 sq.ft.
Balcony Area	491.26 sq.ft.
Total Area	3,326.80 sq.ft.

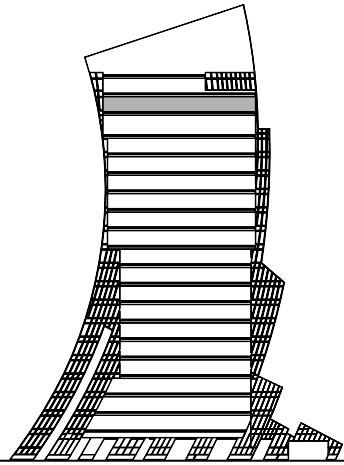


All pictures, plans, layouts, information, data and details included in this brochure are indicative only and may change at any time up to the final 'as built' status in accordance with final designs of the project, regulatory approvals and planning permissions. All accessories and interior finishes such as wallpaper, chandeliers, furniture, electronics, white goods, curtains, hard and soft landscaping, pavements, features, gym, swimming pool(s) and other elements displayed in the brochure, or within the show apartment or between the plot boundary and the unit, are not part of the unit and are shown for illustrative purposes only.



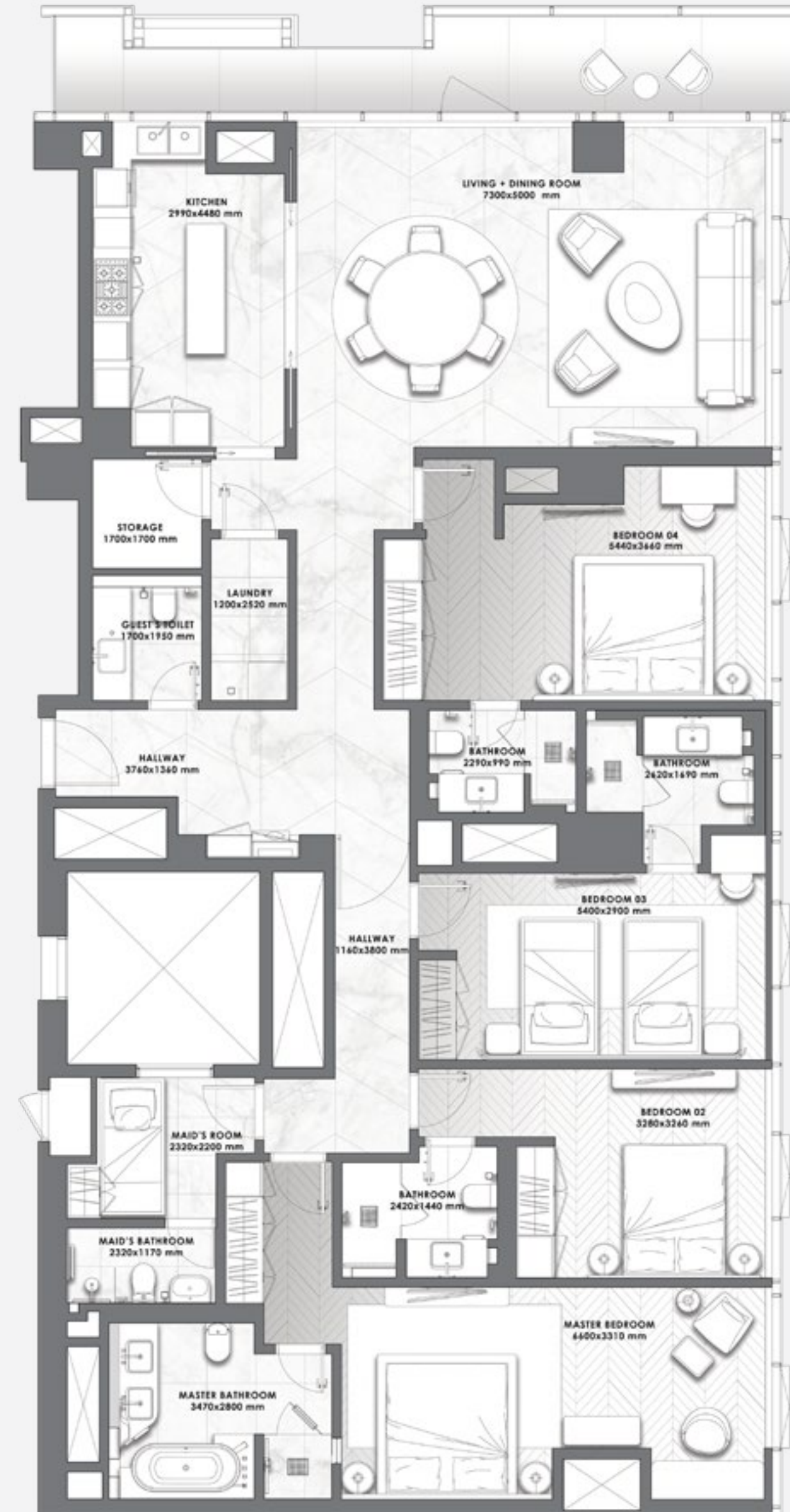
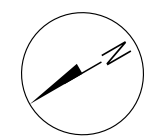
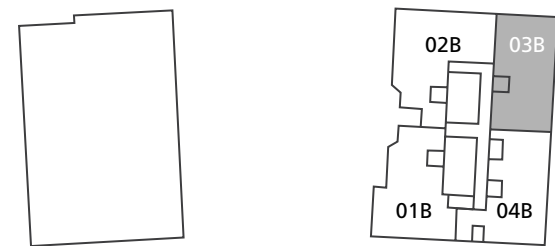
4 BEDROOMS

– 03 SERIES –



FLOOR 18

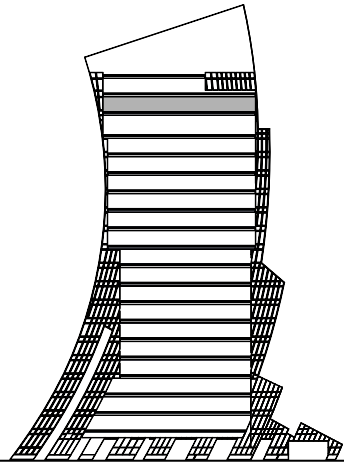
Suite Area	2,349 sq.ft.
Balcony Area	166 sq.ft.
Total Area	2,515 sq.ft.



All pictures, plans, layouts, information, data and details included in this brochure are indicative only and may change at any time up to the final 'as built' status in accordance with final designs of the project, regulatory approvals and planning permissions. All accessories and interior finishes such as wallpaper, chandeliers, furniture, electronics, white goods, curtains, hard and soft landscaping, pavements, features, gym, swimming pool(s) and other elements displayed in the brochure, or within the show apartment or between the plot boundary and the unit, are not part of the unit and are shown for illustrative purposes only.

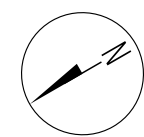
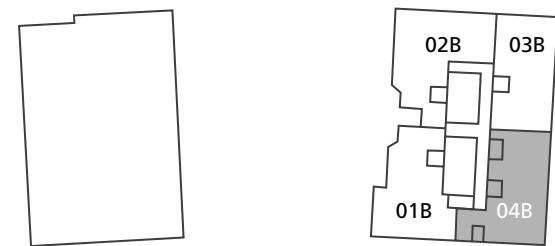
4 BEDROOMS

– 04 SERIES –



FLOOR 18

Suite Area	2,578.49 sq.ft.
Balcony Area	89.66 sq.ft.
Total Area	2,668.16 sq.ft.



All pictures, plans, layouts, information, data and details included in this brochure are indicative only and may change at any time up to the final 'as built' status in accordance with final designs of the project, regulatory approvals and planning permissions. All accessories and interior finishes such as wallpaper, chandeliers, furniture, electronics, white goods, curtains, hard and soft landscaping, pavements, features, gym, swimming pool(s) and other elements displayed in the brochure, or within the show apartment or between the plot boundary and the unit, are not part of the unit and are shown for illustrative purposes only.

