

DUBAI CREEK HARBOUR

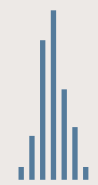
CREEK BEACH

GROVE

EMAAR

The World of Tomorrow

Dubai Creek Harbour is at the heart of our bold new vision for Dubai. The eight square kilometre waterfront destination is bound to push the frontiers of architecture, design and quality of life.



10 mins from
Burj Khalifa



40 mins from Al
Maktoum Int'l Airport

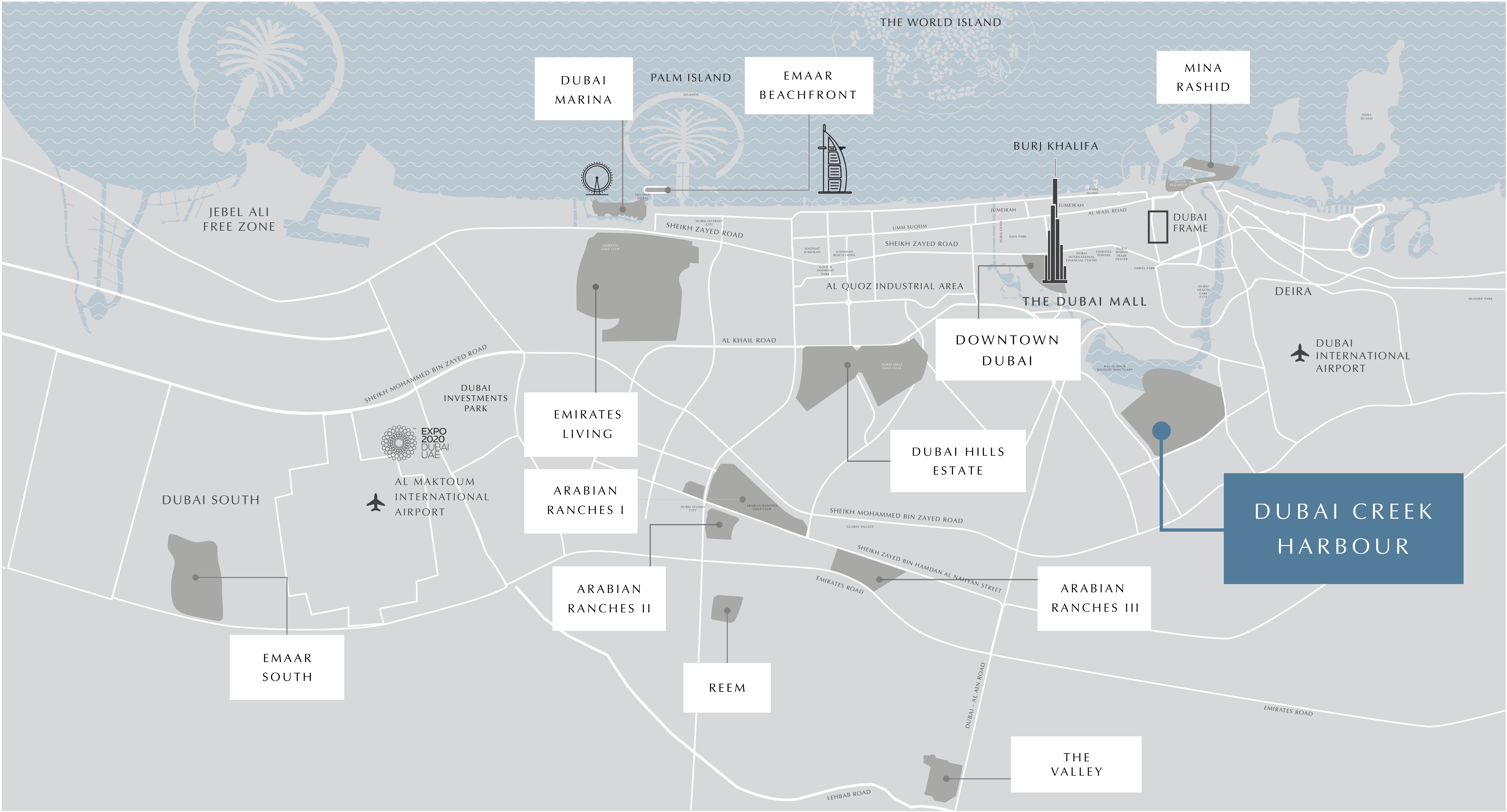


Wildlife Sanctuary
Home Of Pink Flamingos



15 mins from
Dubai Int'l Airport





DUBAI MARINA

EMAAR BEACHFRONT

MINA RASHID

DOWNTOWN DUBAI

DUBAI CREEK HARBOUR

ARABIAN RANCHES I

ARABIAN RANCHES II

ARABIAN RANCHES III

EMAAR SOUTH

REEM

THE VALLEY

EMIRATES LIVING

DUBAI HILLS ESTATE

DUBAI SOUTH

EXPO 2020 DUBAI UAE
AL MAKTOUM INTERNATIONAL AIRPORT

DUBAI INVESTMENTS PARK

THE DUBAI MALL

DUBAI INTERNATIONAL AIRPORT

DEIRA

AL QUOZ INDUSTRIAL AREA

DUBAI FRAME

BURJ KHALIFA

PALM ISLAND

THE WORLD ISLAND

JEBEL ALI FREE ZONE



Creek Beach

Creek Beach is Dubai's first-of-its-kind urban beach in the middle of Dubai Creek Harbour. This metropolitan city provides a unique lifestyle experience not found anywhere else in

Dubai located along the historic Dubai Creek. Stretching along the glimmering canal that runs between the island and mainland, Creek Beach is conceived to afford you the ultimate family-friendly retreat. From 300 metres of pristine white sands to the infinity pool and spectacular sunset views, this is paradise reborn.



GROVE

At Creek Beach

Exceptional location, outstanding design and an eclectic lifestyle are skillfully combined at Grove to create an innovative residential project.

Consisting of five elegant buildings, Grove offers the perfect homes away from the buzz of the city, benefiting from the pedestrian-friendly environment that distinguishes Creek Beach. It also boasts convenient connectivity to the wider city through a dedicated metro station and an efficient road network.

Destination Location



300-Metre Beach



Breathtaking Sunset Views



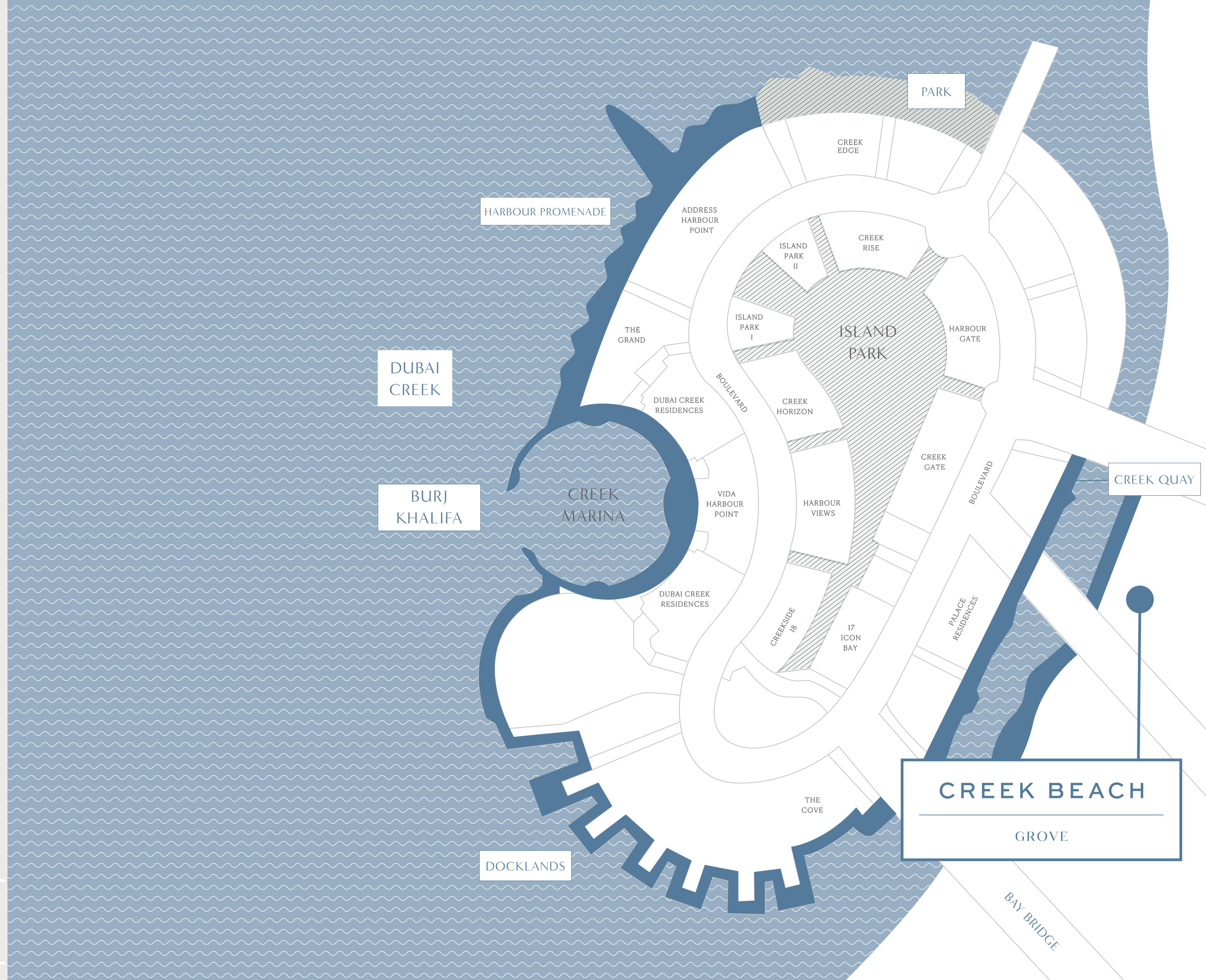
5 Min From Creek Marina Yacht Club



Licensed Bars & Restaurants



Dining At The Waterfront
Vida Hotel





Elegantly Urban

Grove exemplifies structural quality, contemporary design, elegant interiors, and outstanding location, all harmoniously balanced to resonate with those who value a sophisticated urban edge to waterfront living.

Shape your happy life in this cluster of five elegantly designed buildings surrounding a bustling inner plaza, right in the heart of Creek Beach.



When Efficiency Meets Individuality

At GROVE, every aspect of your lifestyle is curated to nurture your best self. Apartments are cleverly engineered to maximise the light-flooded living area with the utmost feel of bliss and serenity.

Each apartment is a flawless canvas for home styling, with materials, textures and finishes to evoke a uniquely modern city vibe.



Live, work, play, and watch your family grow. Happily, together.



Attention To Detail

With a carefully configured blend of style, symmetry and spaciousness, Grove offers six facade styles.

The facades synchronize in perfect harmony by using the same materials in different sizes and patterns while keeping the colour palette unified.





Refined Homes for Every Lifestyle

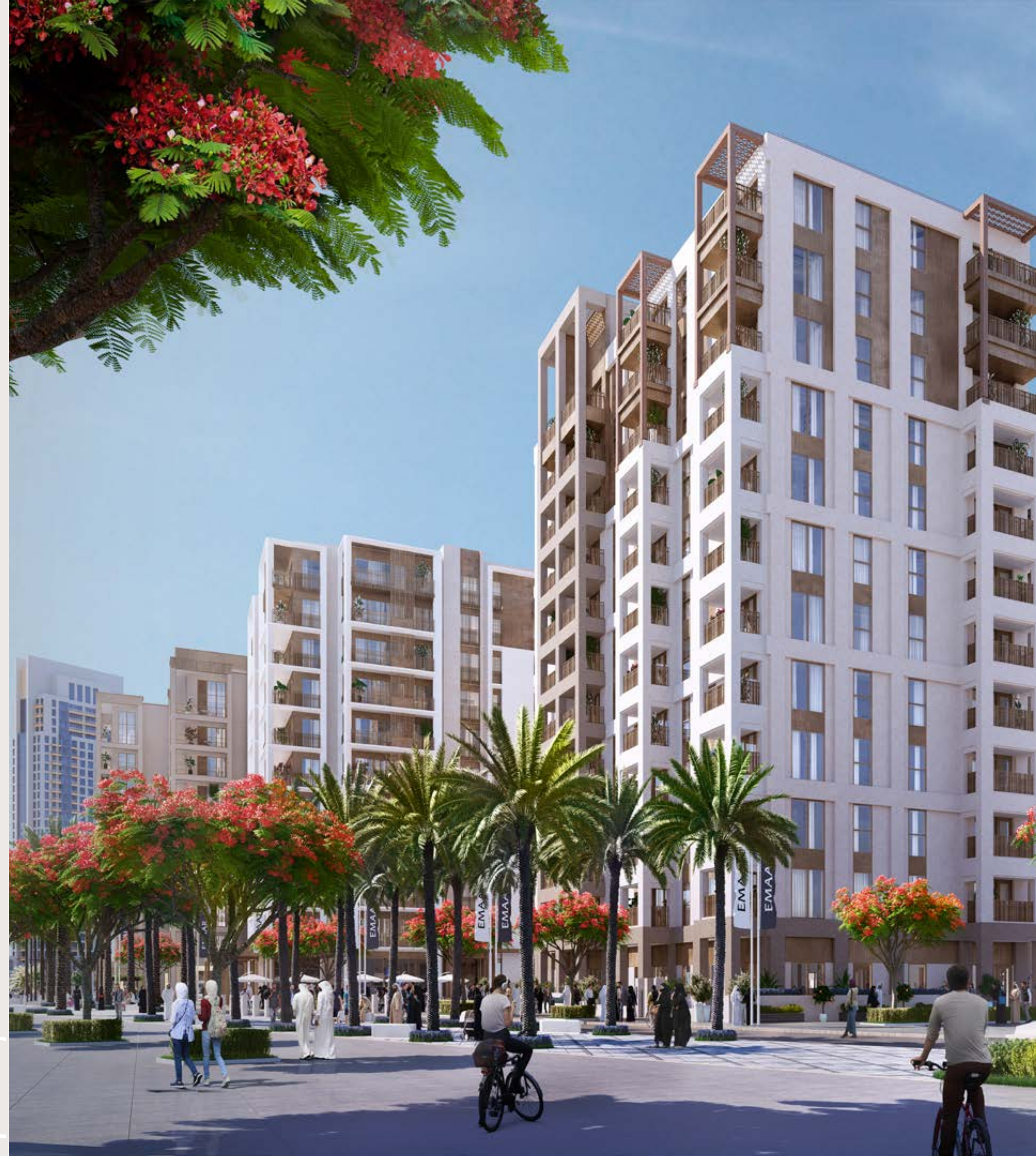
The refined sense of contemporary residences shapes Grove's unique character with a minimalistic aesthetic.

Choose your perfect retreat from a selection of 1, 2 and 3-bedroom residences overlooking the courtyard and the green plazas. Or opt for a sumptuous 4-bedroom penthouse with direct views of the waterfront canal.

Penthouse Perfection

Light-filled living rooms, spacious bedrooms,
impressive views over the creek canal and the
promise of unforgettable moments of relaxation.

Welcome to your penthouse luxury retreat at Grove.



The Perfect Match Combining City Accessibility With Waterfront Living





Outstanding Amenities

At GROVE, an unmatched lifestyle awaits you with a host of amenities and spaces where you can rejuvenate, escape, unwind, connect or indulge.



Community Pool & Kids Pool*



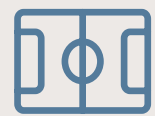
Barbecue Facilities



Fully-Equipped Gym*



Outdoor Play Area



Multi-Purpose Room



Town Centre



Nearby Shopping

The Art of Harmoniously Balanced Surroundings



Global Lifestyle Developer

A leader in the global real estate market, EMAAR has grown over the years to become the largest real estate developer outside of China. You will be investing with one of the best-regarded brands in the world*.

MARKET CAP

AED
21BN

FY 2020

REVENUE

AED
19.7BN

FY 2020

NET PROFIT

AED
2.6BN

FY 2020

RESIDENTIAL UNITS DELIVERED

72,000+

UNITS UNDER CONSTRUCTION

38,000+

*Source: Euromonitor International 2018 report

