

U N V E I L

Y O U R

E X Q U I S I T E

S A N C T U A R Y



SYMBOLIC ALPHA



Division of **SPEEDEXGROUP**

B U I L D I N G
A L E G A C Y
T R A N S F O R M I N G
T H E F U T U R E

Speedex Group, a Dubai-based conglomerate, has been shaping the wholesale and retail industry since 1991. From a small hardware store, it grew into one of the leading import and export businesses in the UAE. The company expanded into DIY retail, advanced agriculture, and boutique real estate development.

Explore a world where innovation, sustainability, and quality intersect. Speedex Group's unwavering commitment to empowering communities and their relentless pursuit of excellence make them a trailblazer in the UAE's wholesale and retail industry. Embrace their values and join them on the journey toward a brighter future.

*Your signature,
Your sanctuary,
Your symbolic home*





S Y M B O L I C A L P A

Welcome to Project Symbolic Alpha, a modern residential community that redefines comfortable living. Discover our exclusively designed 1BHK and 2.5BHK apartments, ideal for families and young professionals seeking upscale living.

At Symbolic Alpha, we prioritize our residents' needs and quality of life. Inspired by beehives, our development features amenities promoting relaxation, wellness, and social interaction. Our standout feature, a temperature-controlled swimming pool, offers refreshing dips on hot summer days. Enjoy our multi-purpose court, EV charging station, yoga garden, and energy-efficient appliances, minimizing our environmental impact. Embrace a harmonious and sustainable lifestyle at Project Symbolic Alpha.

A S U B T L E
F A C A D E T H A T
E M B R A C E S
S I M P L I C I T Y





SYMBOLIC
ALPHA



↑ 5

A W E - I N S P I R I N G

A R R I V A L

S O C I A L I Z E
W I T H
F L A I R

Step into a world of grandeur where every detail is meticulously crafted. From the luminous, inviting living rooms that exude warmth and comfort to the captivating, imaginative spaces that inspire creativity and escape, our luxurious offerings redefine extravagance.



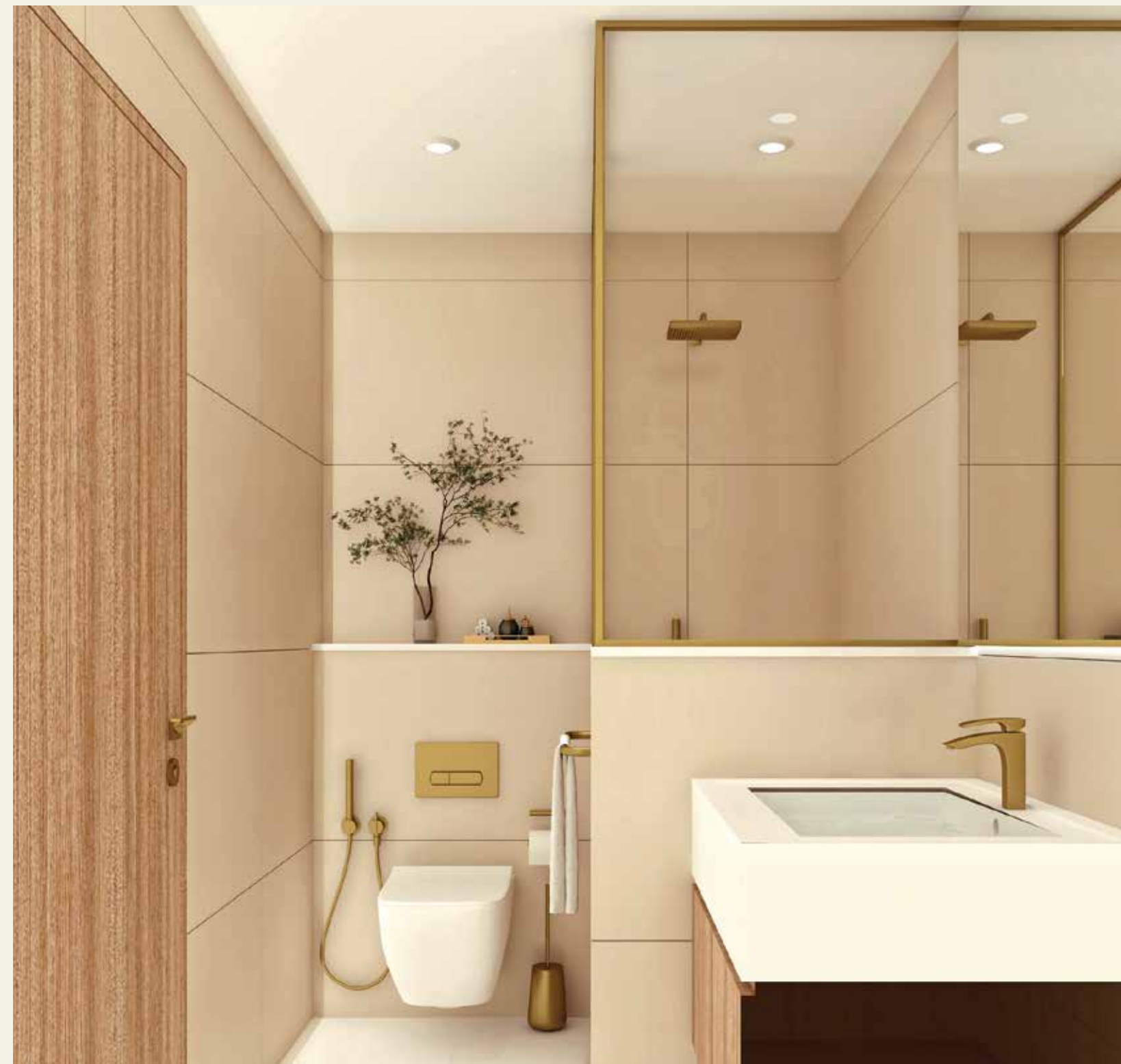


Discover our thoughtfully designed 1BHK and 2.5BHK apartments, tailored to meet your needs. Impeccable fixtures and meticulous attention to detail create stylish and functional living spaces. Embrace community living with vibrant communal areas fostering connection and inclusivity.

C R A F T E D
F O R
Y O U R
C O M F O R T







D E T E R M I N E D
T O C R E A T E
A S U S T A I N A B L E
L E G A C Y

Your gateway to a sustainable world.

Symbolic developments is committed to a sustainable future. Our buildings incorporate renewable energy, sustainable materials, and water-conserving designs. We prioritize waste reduction and recycling while continually assessing our environmental impact.

As responsible corporate citizens, we embrace our duty to the planet and future generations. Sustainability is at the core of our vision. Join us in shaping a brighter tomorrow, where every brick carries the essence of responsible stewardship.





I M M E R S E I N
B L I S S , S Y M B O L I C ' S
T E M P E R A T U R E
H A V E N

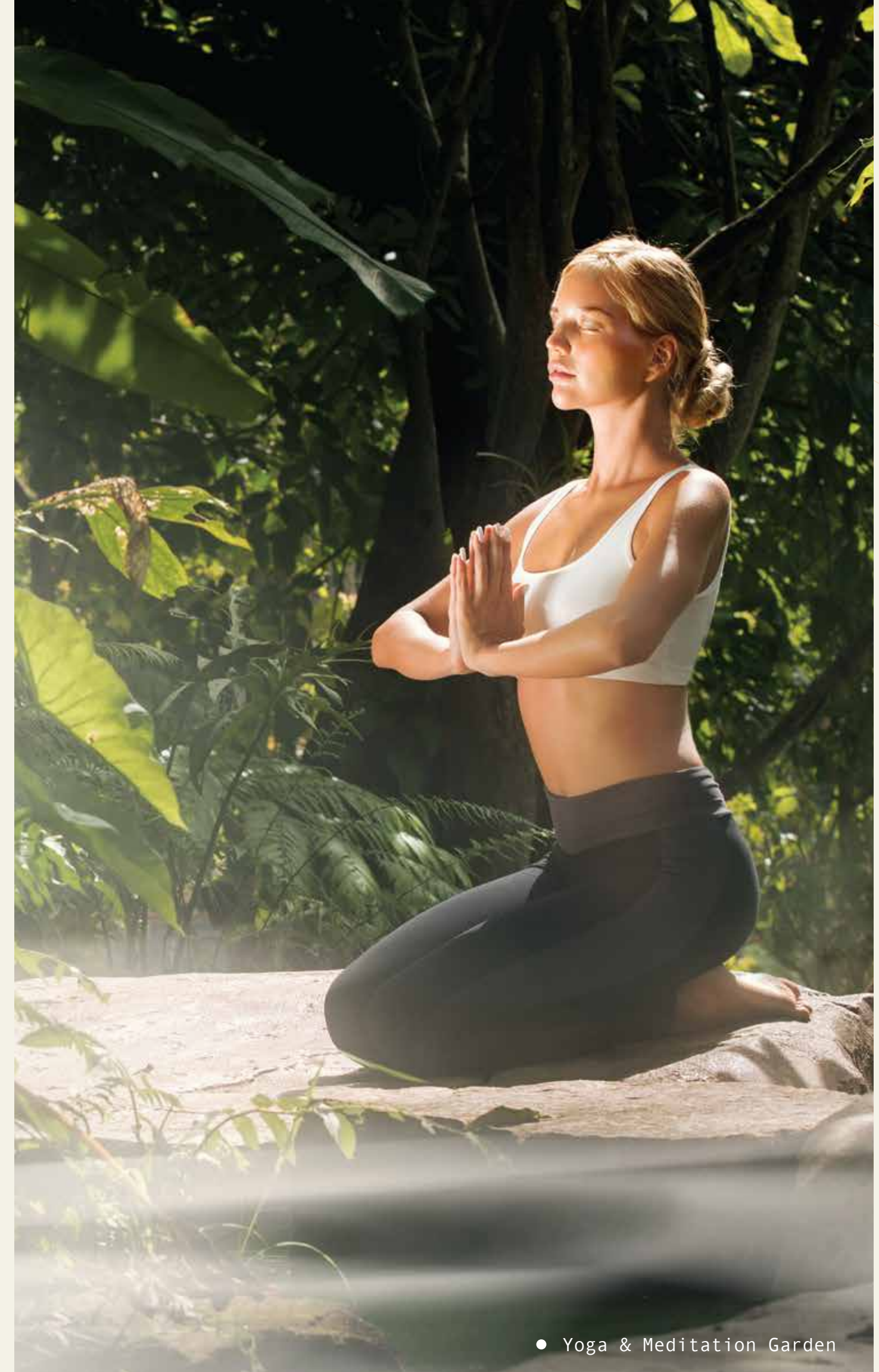
Imagine gliding through crystal-clear waters, caressed by the perfect temperature that remains blissfully constant, inviting you for a refreshing dip no matter the season. Feel the gentle embrace of the water as you embark on a leisurely swim or power through invigorating laps to keep your body and mind in perfect harmony.



● Jogging Track

Nestled amidst verdant landscapes and breathtaking scenery, our track invites you to stroll or sprint, immersing yourself in nature's embrace. Tailored to accommodate beginners and seasoned athletes alike, it's the ultimate haven for daily workouts and invigorating breezes.

S T R I D E
I N
S T Y L E



● Yoga & Meditation Garden

N U R T U R E
Y O U R
I N N E R
Z E N

Awaken Serenity in our Sacred Yoga and Meditation Garden. Embark on a transformative journey to rejuvenate mind, body, and spirit.



● Kids Pool

L I T T L E
S P L A S H E R S '
P A R A D I S E

A separate kid's pool, located next to our main swimming pool, with shallow depths and fun water play equipment. Parents can relax while their little ones create unforgettable memories in a fun and safe environment.

J E T S
O F
J O Y

Escape the strains of everyday life as you immerse yourself in this therapeutic retreat. Whether you seek relief for tired muscles or crave a blissful social gathering, our jacuzzi is the idyllic destination to find repose and rejuvenation.



● Jacuzzi



● EV Charging Station

At Symbolic Alpha, we go the extra mile with electric vehicle charging stations. Encouraging eco-conscious living, conveniently located on-site for residents to charge their cars. Join us in reducing our carbon footprint and embracing a cleaner, greener future.

E M B R A C E
T H E
E L E C T R I C

R E V O L U T I O N



W H I S P E R S
O F P E A C E

Relax beneath shady trees, find solace in a book, or cherish heartfelt conversations on inviting outdoor benches. Revel in the breathtaking beauty of our landscape garden.

● Landscape Garden and Outdoor Seating Area



R E J U V E N A T E
Y O U R
B O D Y

Elevate your fitness at our state-of-the-art Health Club designed for all residents. With a mixed gender gym, premium equipment, and convenient lockers, it's the ideal place to stay healthy. Enjoy shared amenities like showers, and changing rooms, ensuring a comfortable and enjoyable workout experience for everyone.

B A S K

I N

B L I S S

Designed for those who seek the warmth of sunrays, this inviting open-air space provides a cozy retreat to unwind and recharge. Whether you're lost in a captivating book, enjoying delightful picnics with friends, or simply savoring the peaceful surroundings, our sun deck area is your perfect sanctuary for relaxation.



● Kids Play Area

Experience boundless play at our safe and engaging kids' area. Discover a wonderland designed to nurture growth and laughter. With swings, slides, climbing frames, and ample seating, it's a sanctuary for quality family moments, creating cherished memories that will last a lifetime.

F O S T E R I N G
C H I L D H O O D
J O Y



● BBQ Area

F I R E
U P
T H E
F L A V O U R

Savor unforgettable outdoor feasts in our vibrant BBQ haven. Gather with friends and family, indulge in culinary adventures, and create cherished memories in our picturesque, inviting space.



TYPICAL FLOOR PLAN (1ST - 8TH FLOOR)



* Disclaimer: All design, features, amenities, materials, dimensions, layout drawings are approximate and subject to change without notice; Actual area of the Unit may vary from the stated area, drawings not to scale; Developer reserves the right to make revisions to comply with any Applicable Law or the requirements of any Relevant Authority; For actual sizes please refer the Unit's Sales Purchase Agreement.

APARTMENT 01



Type 1 - 1BHK			
TYPE	Suite (Sq. ft)	Balcony (Sq. ft)	Total (Sq. ft)
AREA	574.37	141.44	715.81
APT NO.	P01. 101, 201, 301, 401, 501, 601, 701, 801		

☒ Service Shaft

APARTMENT 02



Type 2 - 1BHK			
TYPE	Suite (Sq. ft)	Balcony (Sq. ft)	Total (Sq. ft)
AREA	574.37	141.44	715.81
APT NO.	P02. 102, 202, 302, 402, 502, 602, 702, 802		

☒ Service Shaft

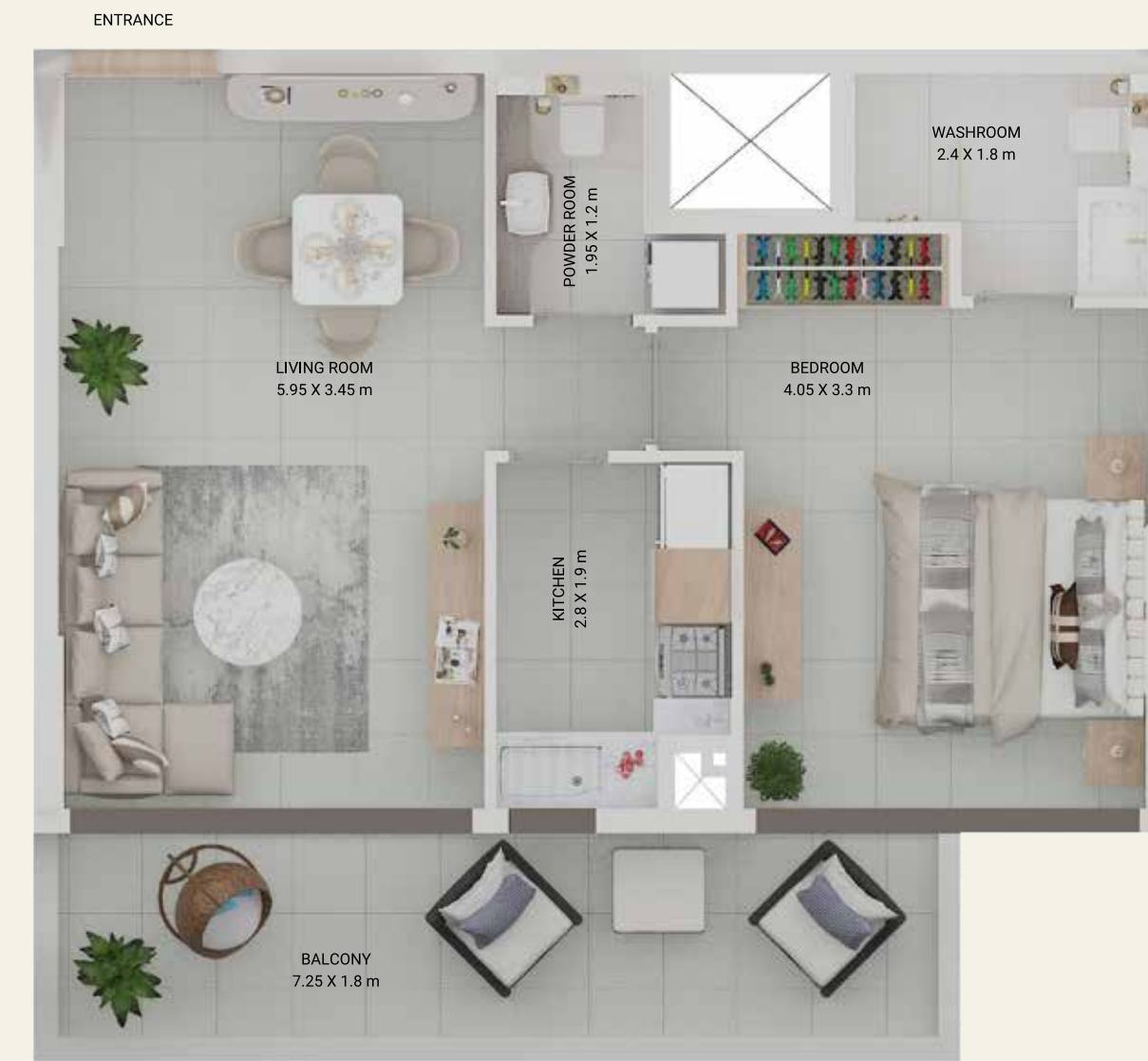
APARTMENT 03



Type 3 - 1BHK			
TYPE	Suite (Sq. ft)	Balcony (Sq. ft)	Total (Sq. ft)
AREA	574.37	246.93	821.29
APT NO.	P03, 103, 203, 303, 403, 503, 603, 703, 803		

☒ Service Shaft

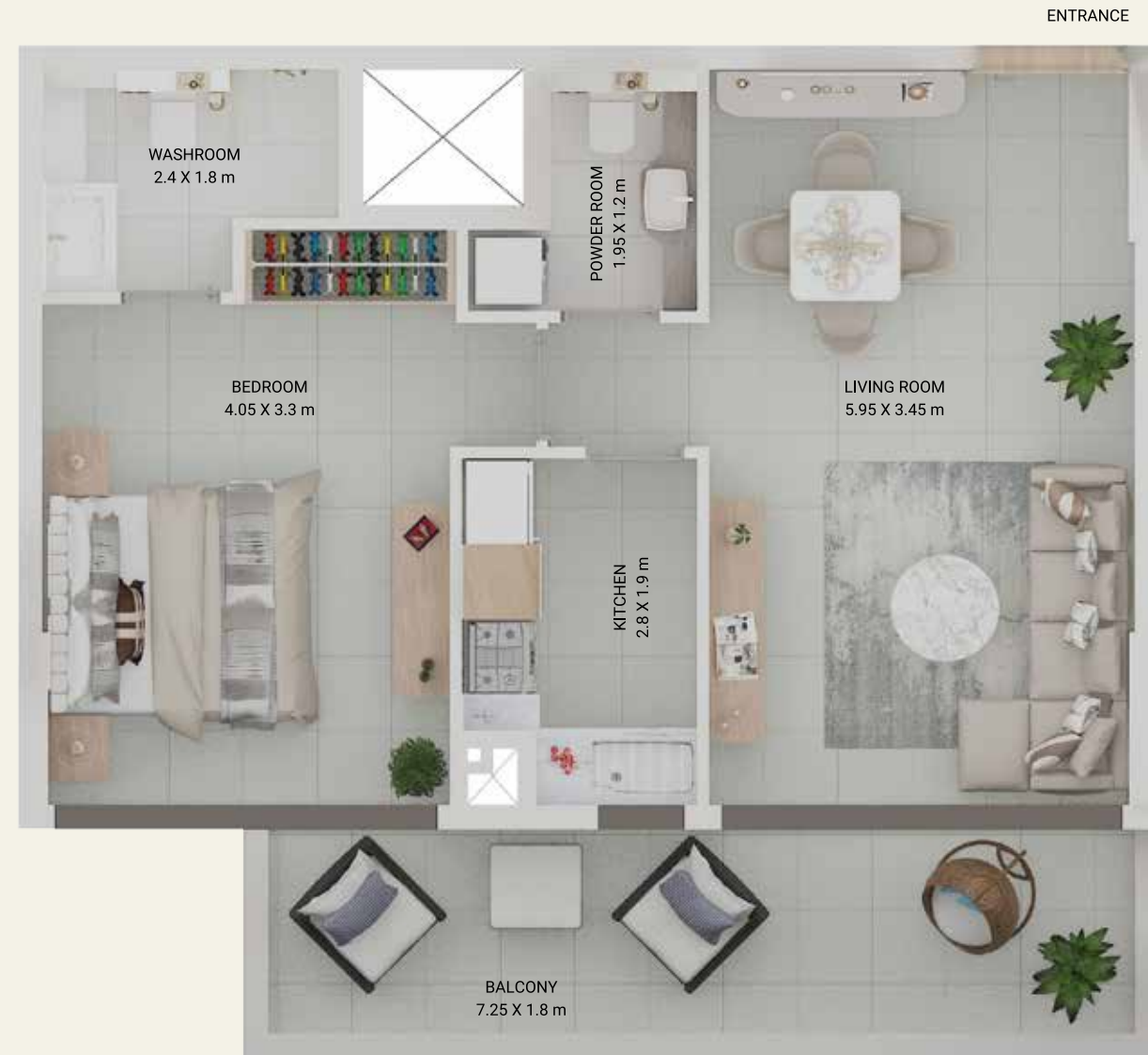
APARTMENT 04



Type 4 - 1BHK			
TYPE	Suite (Sq. ft)	Balcony (Sq. ft)	Total (Sq. ft)
AREA	574.37	141.44	715.81
APT NO.	P04, 104, 204, 304, 404, 504, 604, 704, 804		

☒ Service Shaft

APARTMENT 05



Type 5 - 1BHK			
TYPE	Suite (Sq. ft)	Balcony (Sq. ft)	Total (Sq. ft)
AREA	574.37	141.44	715.81
APT NO.	P05, 105, 205, 305, 405, 505, 605, 705, 805		

⊗ Service Shaft

APARTMENT 06



Type 6 - 1BHK			
TYPE	Suite (Sq. ft)	Balcony (Sq. ft)	Total (Sq. ft)
AREA	574.37	141.44	715.81
APT NO.	P06, 106, 206, 306, 406, 506, 606, 706, 806		

⊗ Service Shaft

APARTMENT 07



Type 7 - 1BHK			
TYPE	Suite (Sq. ft)	Balcony (Sq. ft)	Total (Sq. ft)
AREA	574.37	216.25	790.62
APT NO.	P07, 107, 207, 307, 407, 507, 607, 707, 807		

⊗ Service Shaft

APARTMENT 08



Type 1 - 2 BHK			
TYPE	Suite (Sq. ft)	Balcony (Sq. ft)	Total (Sq. ft)
AREA	870.48	271.04	1141.52
APT NO.	108, 208, 308, 408, 508, 608, 708, 808		

⊗ Service Shaft

APARTMENT 09



Type 2 - 2 BHK			
TYPE	Suite (Sq. ft)	Balcony (Sq. ft)	Total (Sq. ft)
AREA	871.24	193.21	1064.45
APT NO.	P08, 108, 209, 309, 409, 509, 609, 709, 809		

⊗ Service Shaft

APARTMENT 10



TYPE 3 - 2 BHK			
TYPE	Suite (Sq. ft)	Balcony (Sq. ft)	Total (Sq. ft)
AREA	886.85	308.5	1195.34
APT NO.	P09, 110, 210, 310, 410, 510, 610, 710, 810		

⊗ Service Shaft

APARTMENT 11



TYPE 3 - 2 BHK			
TYPE	Suite (Sq. ft)	Balcony (Sq. ft)	Total (Sq. ft)
AREA	886.85	308.5	1195.34
APT NO.	P09, 110, 210, 310, 410, 510, 610, 710, 810		

☒ Service Shaft

LIWAN ATTRACTIONS

MALLS

- Silicon Central Mall 10 Mins
- Dubai Outlet Mall 15 Mins
- Dubai Mall 15 Mins

MOTORWAYS

- Dubai-Al Ain Road 09 Mins
- Sheikh Mohammed Bin Zayed Road 08 Mins
- Sheikh Zayed Road 15 Mins

MEDICAL

COMMUNITY

- Medicure Polyclinic Silicon Oasis 10 Mins
- Nad Al Sheba Health Cente 17 Mins
- HMS Mirdif Hospital 18 Mins

ATTRACTIONS

- Global Village 15 Mins
- Dubai Butterfly Garden 15 Mins
- IMG World 09 Mins

COMMUNITY

PARKS

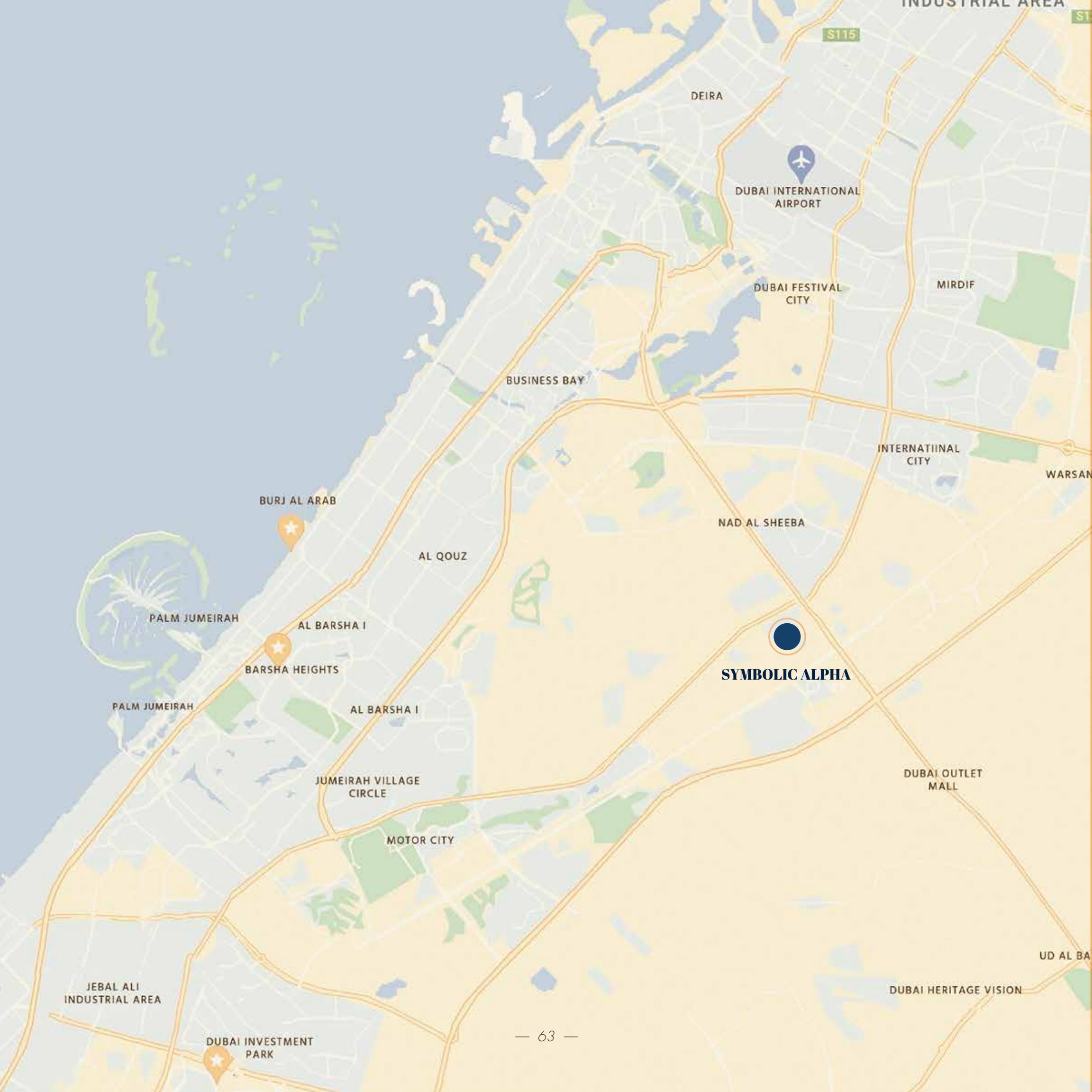
- Liwan Lake Garden 03 Mins
- Mazaya Residents Park North 03 Mins
- Silicon Oasis Community Parks 10 Mins

SCHOOLS

- Toddlers International Nursery 11 Mins
- British Orchard Nursery 03 Mins
- Gems WSO 10 Mins

AIRPORTS

- Dubai International Airport 18 Mins
- Al Maktoum International Airport (DWC) 25 Mins
- Sharjah International Airport 29 Mins



O U R
L O C A T I O N

Welcome to a remarkable property situated in a prime location, marked by its desirable address at LIWAAN. Nestled in this sought-after neighborhood, this property offers an extraordinary opportunity to indulge in a lifestyle that seamlessly combines convenience, beauty, and tranquility.

