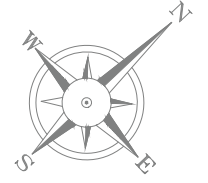


FIRST FLOOR PLAN

- STUDIO
- 1 BEDROOM
- 2 BEDROOM



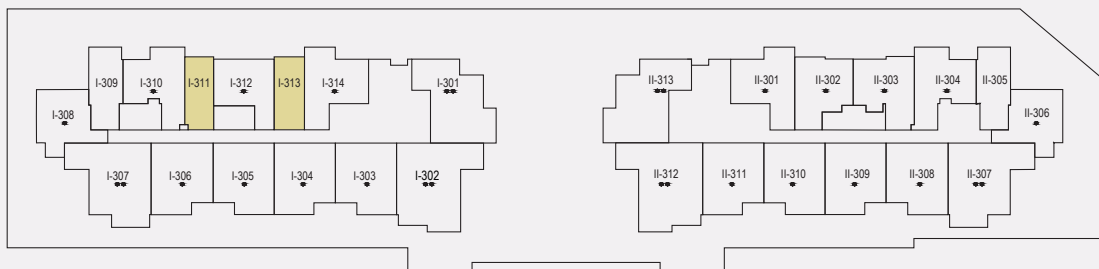
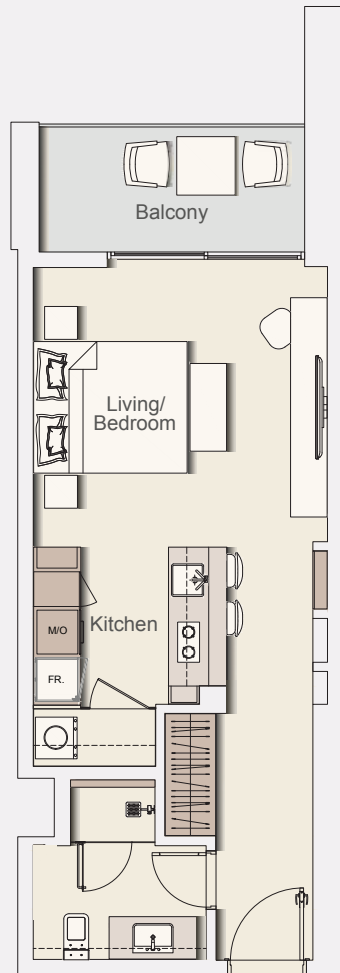


TYPICAL FLOOR PLAN



Typical apartment type

STUDIO-TYPE A



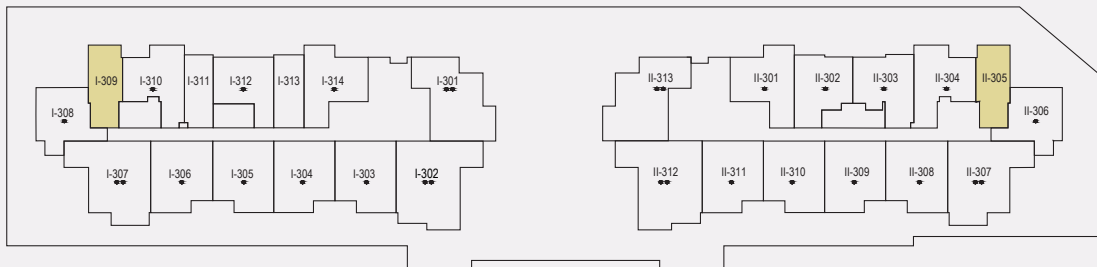
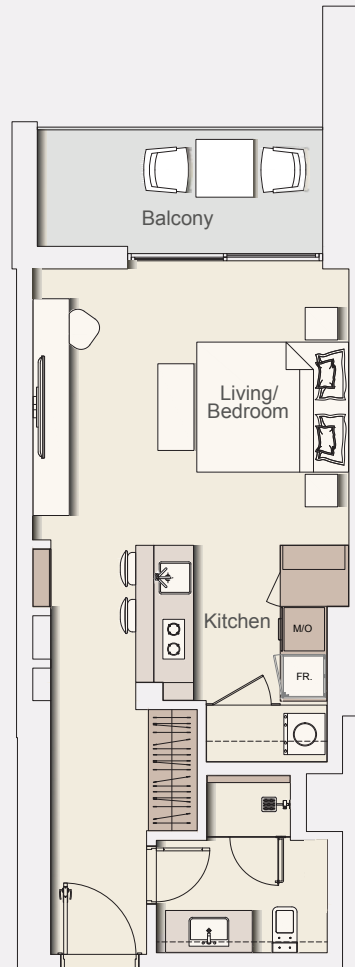
Typical Floor Plan from 2nd to 12th floor.

Internal Living Area	439.27 sq.ft.
Outdoor Living Area	77.93 sq.ft.
Total Living Area	517.21 sq.ft.

All drawings and dimensions are approximate. Drawings are not to scale and are subject to change without notice. The developer reserves the right to make revisions. The units are measured at typical floor in the building and columns may vary in size depending on the floor level. The furnishings and accessories shown are for representation only. The length and width of the Unit and balcony varies depending on which floor and which orientation the unit is located within the building to comply with the building authority regulations.

Typical apartment type

STUDIO-TYPE B



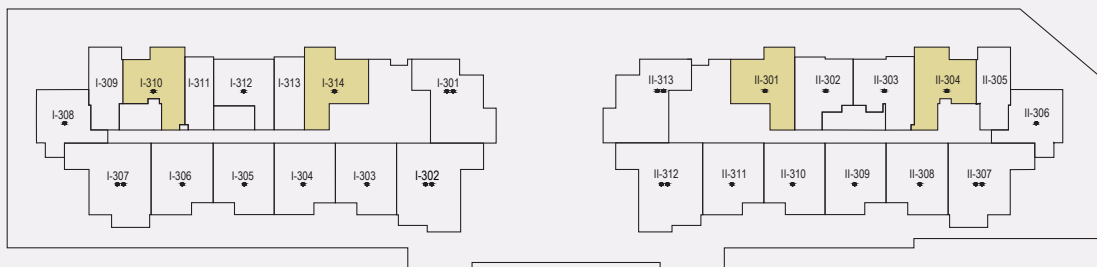
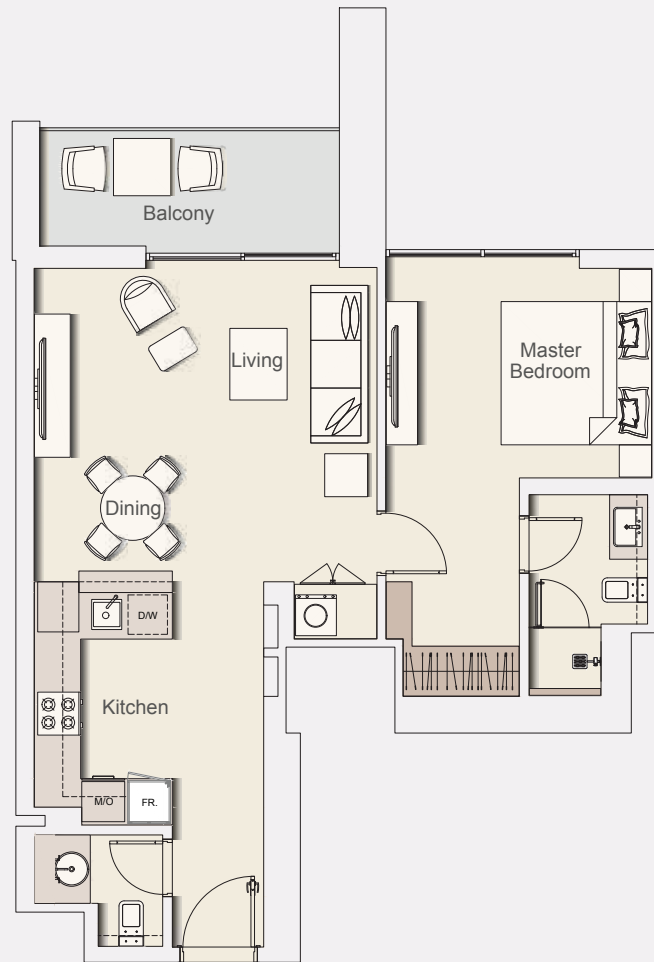
Typical Floor Plan from 2nd to 12th floor.

Internal Living Area	455.96 sq.ft.
Outdoor Living Area	84.17 sq.ft.
Total Living Area	540.13 sq.ft.

All drawings and dimensions are approximate. Drawings are not to scale and are subject to change without notice. The developer reserves the right to make revisions. The units are measured at typical floor in the building and columns may vary in size depending on the floor level. The furnishings and accessories shown are for representation only. The length and width of the Unit and balcony varies depending on which floor and which orientation the unit is located within the building to comply with the building authority regulations.

Typical apartment type

1 BR-TYPE A



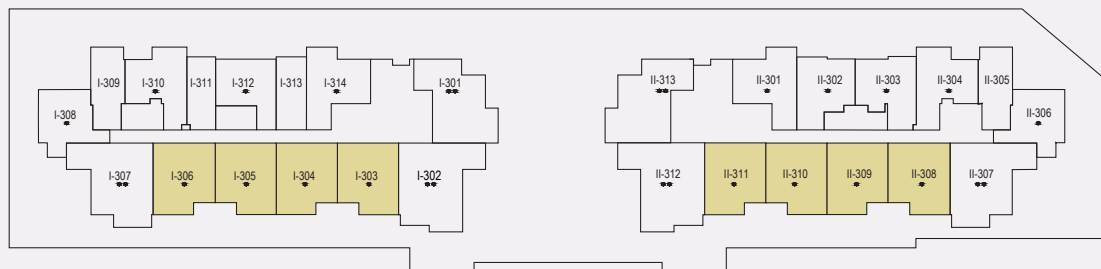
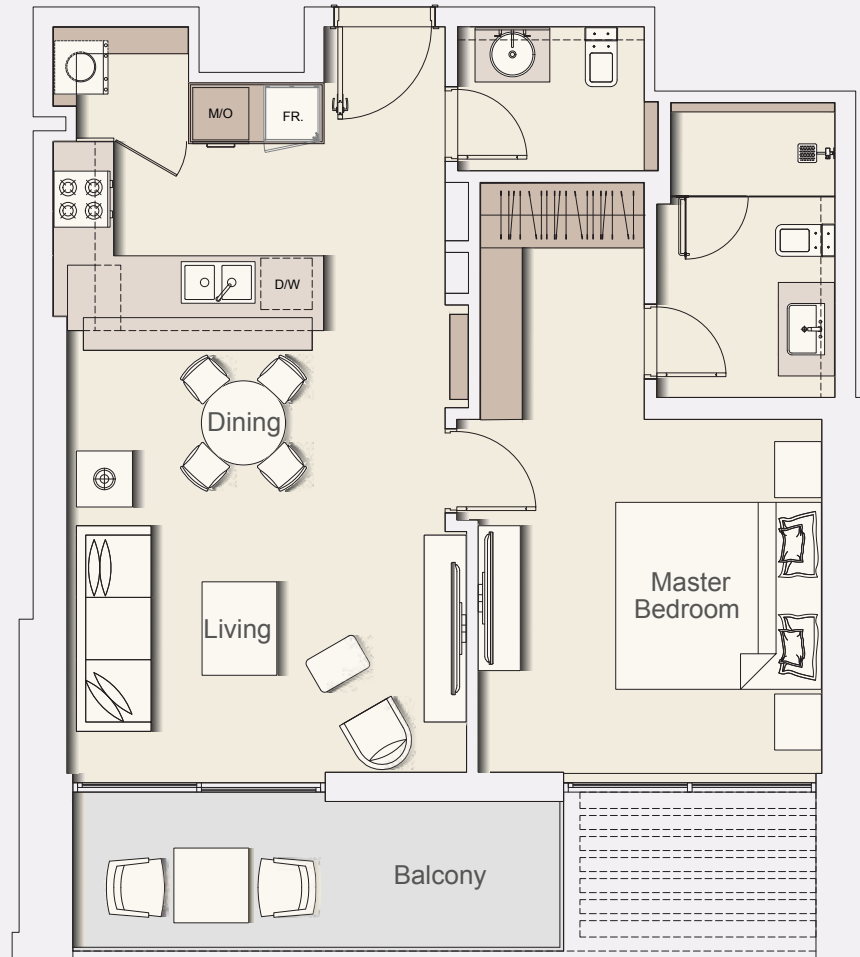
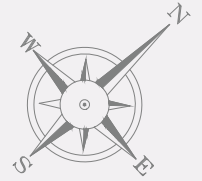
Typical Floor Plan from 2nd to 12th floor.

Internal Living Area	697.93 sq.ft.
Outdoor Living Area	88.59 sq.ft.
Total Living Area	786.52 sq.ft.

All drawings and dimensions are approximate. Drawings are not to scale and are subject to change without notice. The developer reserves the right to make revisions. The units are measured at typical floor in the building and columns may vary in size depending on the floor level. The furnishings and accessories shown are for representation only. The length and width of the Unit and balcony varies depending on which floor and which orientation the unit is located within the building to comply with the building authority regulations.

Typical apartment type

1 BR-TYPE B



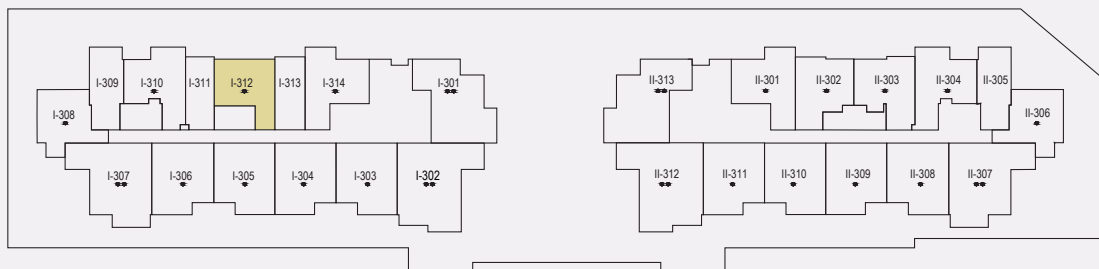
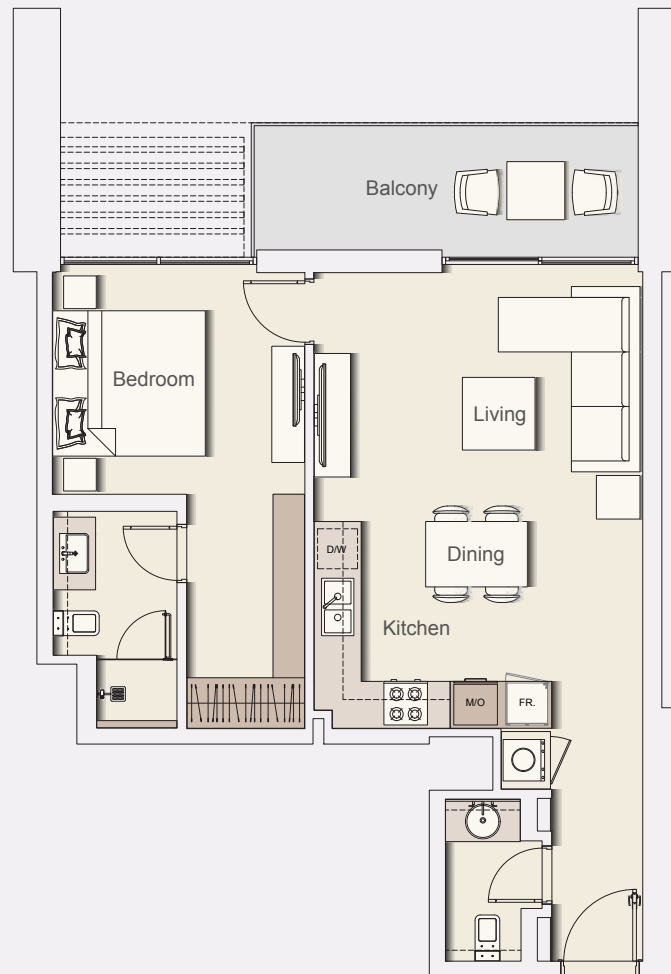
Typical Floor Plan from 2nd to 12th floor.

Internal Living Area	731.73 sq.ft.
Outdoor Living Area	100.21 sq.ft.
Total Living Area	831.94 sq.ft.

All drawings and dimensions are approximate. Drawings are not to scale and are subject to change without notice. The developer reserves the right to make revisions. The units are measured at typical floor in the building and columns may vary in size depending on the floor level. The furnishings and accessories shown are for representation only. The length and width of the Unit and balcony varies depending on which floor and which orientation the unit is located within the building to comply with the building authority regulations.

Typical apartment type

1 BR-TYPE C



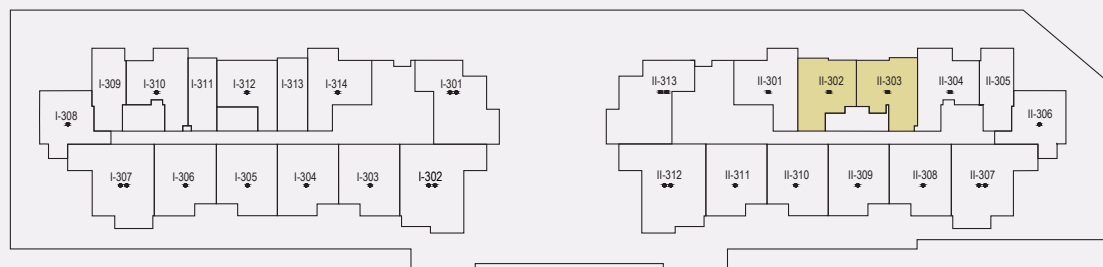
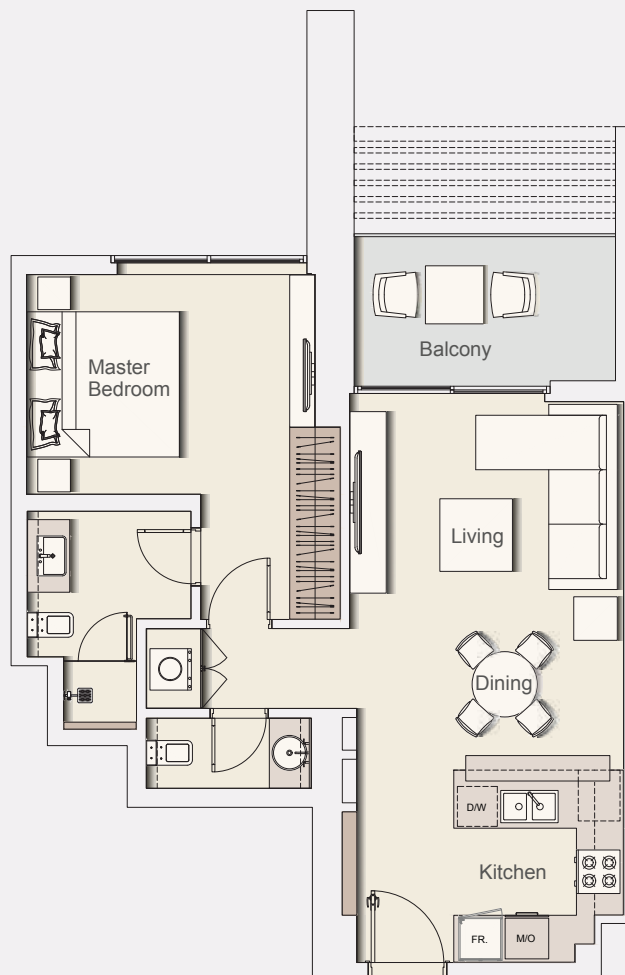
Typical Floor Plan from 2nd to 12th floor.

Internal Living Area	673.17 sq.ft.
Outdoor Living Area	102.15 sq.ft.
Total Living Area	775.32 sq.ft.

All drawings and dimensions are approximate. Drawings are not to scale and are subject to change without notice. The developer reserves the right to make revisions. The units are measured at typical floor in the building and columns may vary in size depending on the floor level. The furnishings and accessories shown are for representation only. The length and width of the Unit and balcony varies depending on which floor and which orientation the unit is located within the building to comply with the building authority regulations.

Typical apartment type

1 BR-TYPE D



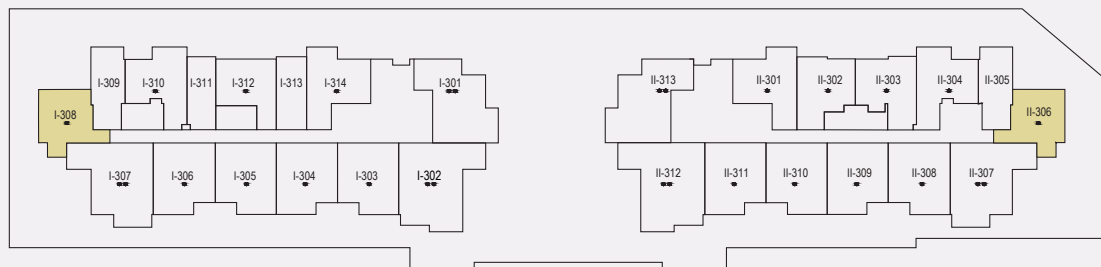
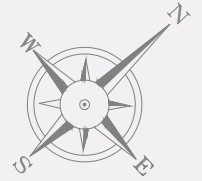
Typical Floor Plan from 2nd to 12th floor.

Internal Living Area	673.60 sq.ft.
Outdoor Living Area	90.52 sq.ft.
Total Living Area	764.13 sq.ft.

All drawings and dimensions are approximate. Drawings are not to scale and are subject to change without notice. The developer reserves the right to make revisions. The units are measured at typical floor in the building and columns may vary in size depending on the floor level. The furnishings and accessories shown are for representation only. The length and width of the Unit and balcony varies depending on which floor and which orientation the unit is located within the building to comply with the building authority regulations.

Typical apartment type

1 BR-TYPE E



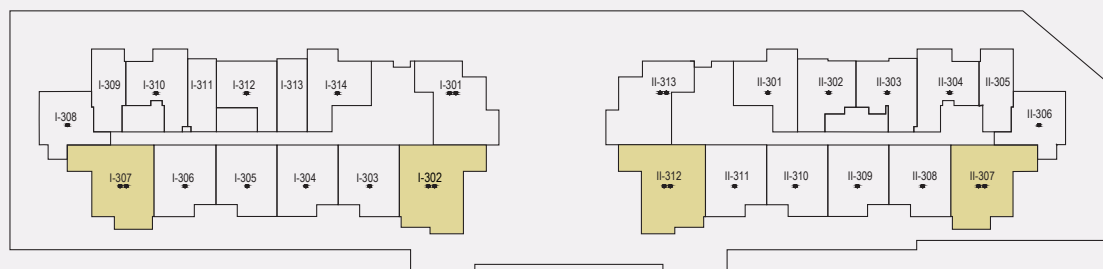
Typical Floor Plan from 2nd to 12th floor.

Internal Living Area	651.32 sq.ft.
Outdoor Living Area	55.00 sq.ft.
Total Living Area	706.33 sq.ft.

All drawings and dimensions are approximate. Drawings are not to scale and are subject to change without notice. The developer reserves the right to make revisions. The units are measured at typical floor in the building and columns may vary in size depending on the floor level. The furnishings and accessories shown are for representation only. The length and width of the Unit and balcony varies depending on which floor and which orientation the unit is located within the building to comply with the building authority regulations.

Typical apartment type

2 BR-TYPE A



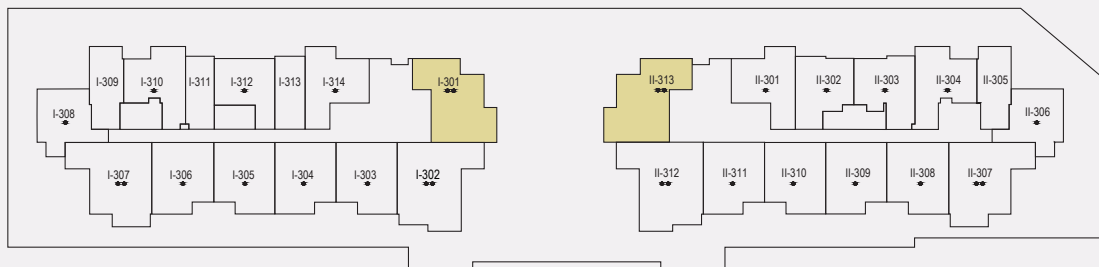
Typical Floor Plan from 2nd to 12th floor.

Internal Living Area	1037.64 sq.ft.
Outdoor Living Area	105.27 sq.ft.
Total Living Area	1142.91 sq.ft.

All drawings and dimensions are approximate. Drawings are not to scale and are subject to change without notice. The developer reserves the right to make revisions. The units are measured at typical floor in the building and columns may vary in size depending on the floor level. The furnishings and accessories shown are for representation only. The length and width of the Unit and balcony varies depending on which floor and which orientation the unit is located within the building to comply with the building authority regulations.

Typical apartment type

2 BR-TYPE B



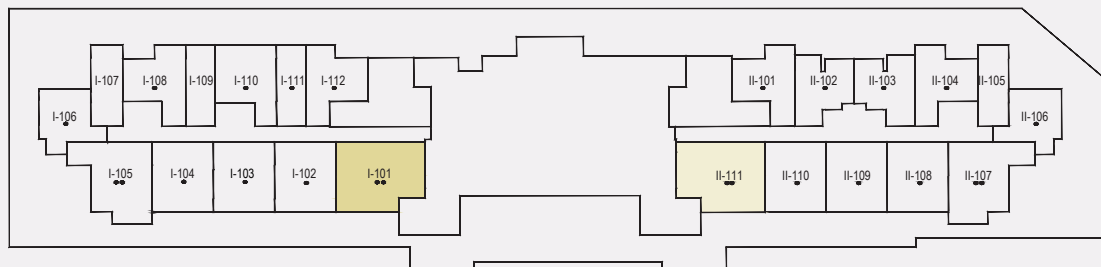
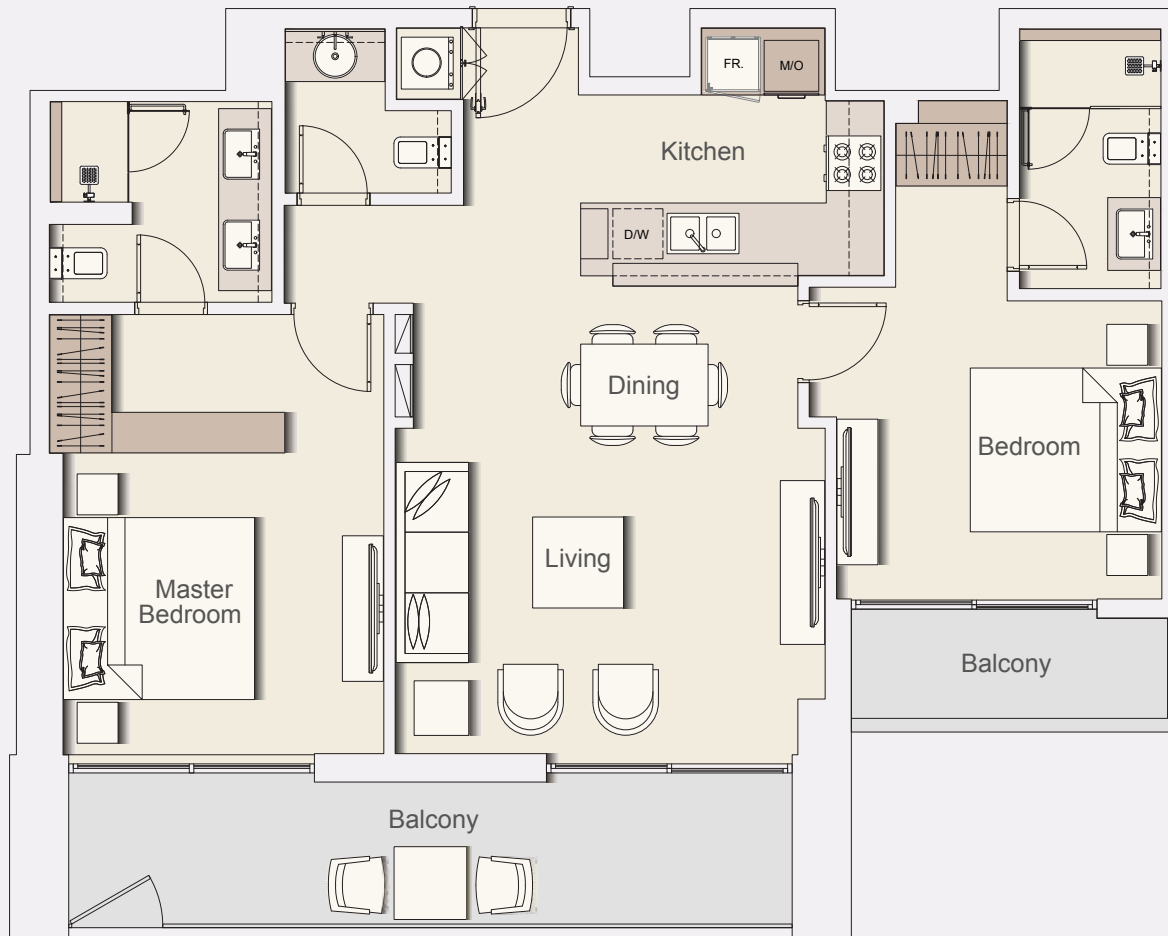
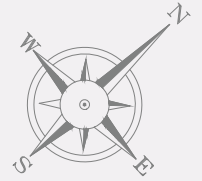
Typical Floor Plan from 2nd to 12th floor.

Internal Living Area	957.02 sq.ft.
Outdoor Living Area	93.00 sq.ft.
Total Living Area	1050.02 sq.ft.

All drawings and dimensions are approximate. Drawings are not to scale and are subject to change without notice. The developer reserves the right to make revisions. The units are measured at typical floor in the building and columns may vary in size depending on the floor level. The furnishings and accessories shown are for representation only. The length and width of the Unit and balcony varies depending on which floor and which orientation the unit is located within the building to comply with the building authority regulations.

Typical apartment type

2 BR-TYPE C



Internal Living Area	999.75 sq.ft.
Outdoor Living Area	157.26 sq.ft.
Total Living Area	1157.01 sq.ft.

All drawings and dimensions are approximate. Drawings are not to scale and are subject to change without notice. The developer reserves the right to make revisions. The units are measured at typical floor in the building and columns may vary in size depending on the floor level. The furnishings and accessories shown are for representation only. The length and width of the Unit and balcony varies depending on which floor and which orientation the unit is located within the building to comply with the building authority regulations.