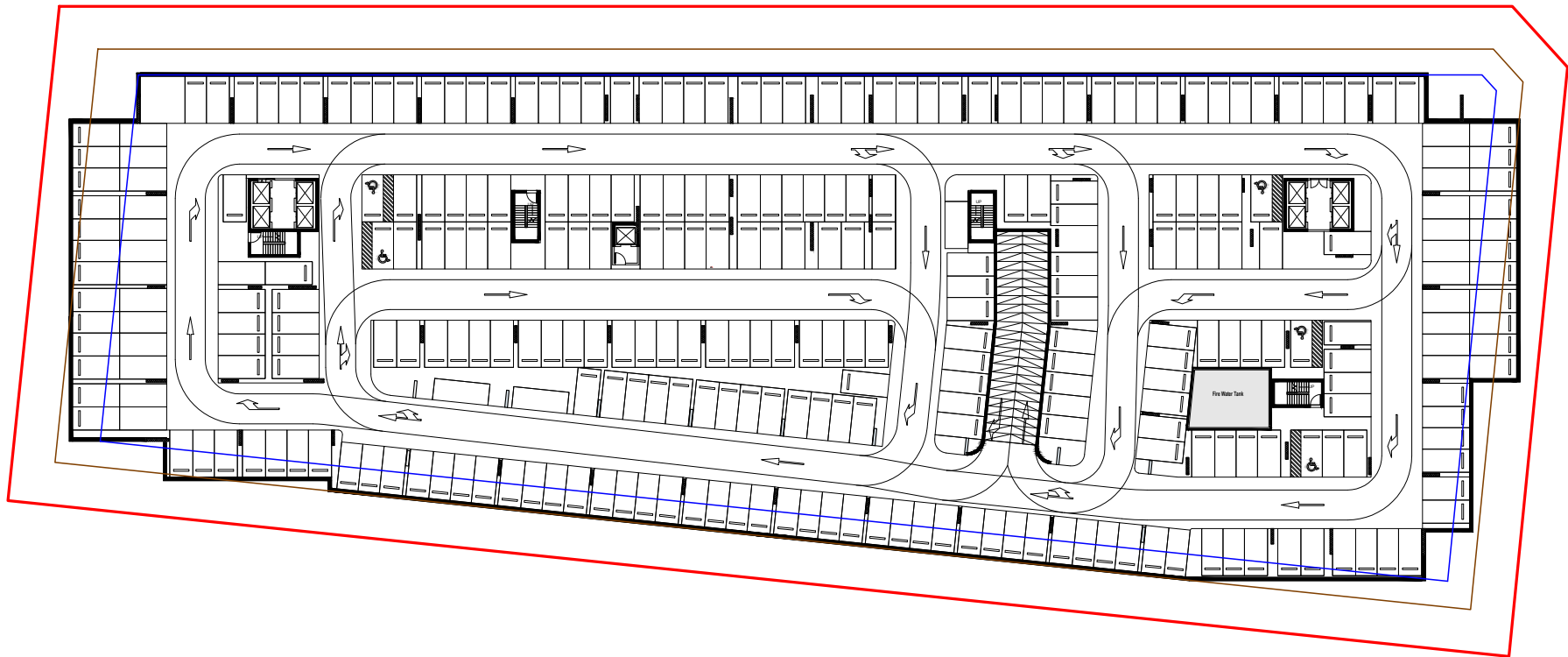


---

# SELINA BAY

## BASEMENT 02 FLOOR PLAN

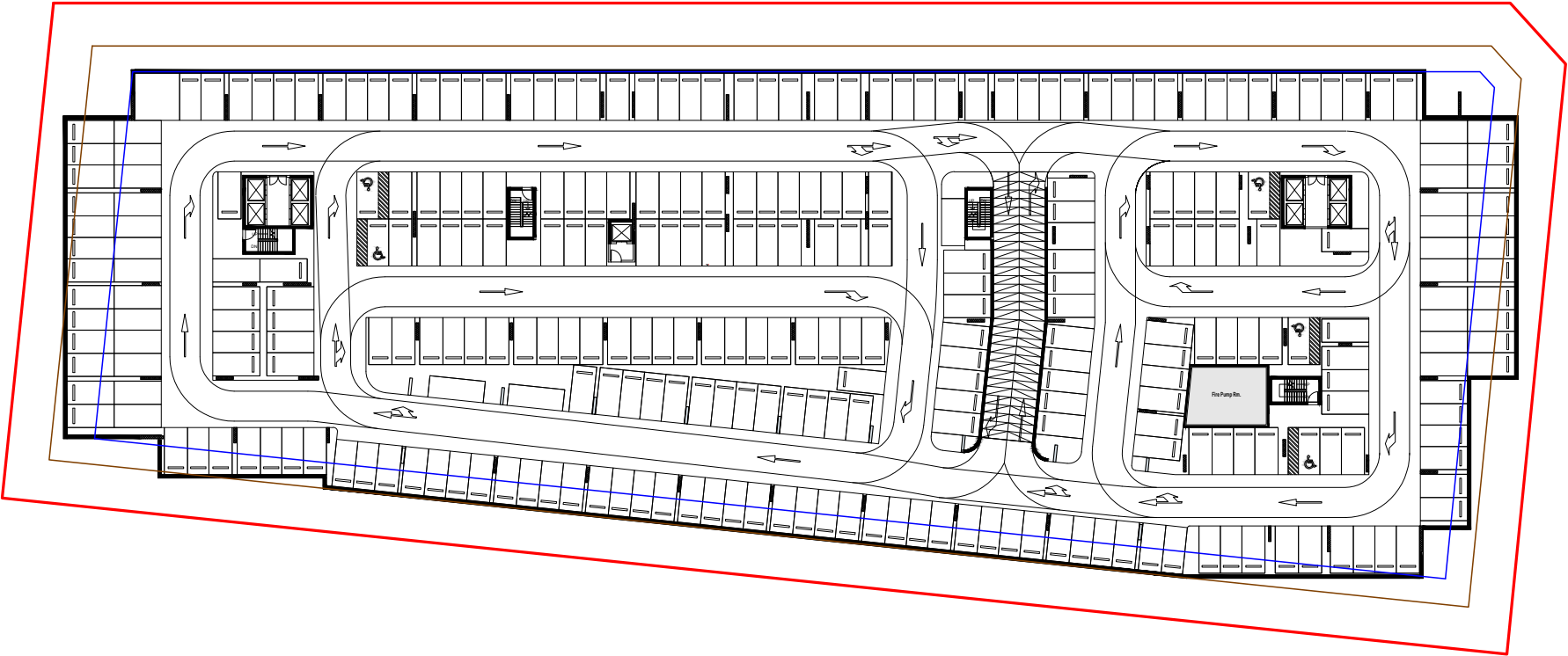
○ 11B ○ 1B ○ 2B ○ 3B ○ 4B



# SELINA BAY

## BASEMENT 01 FLOOR PLAN

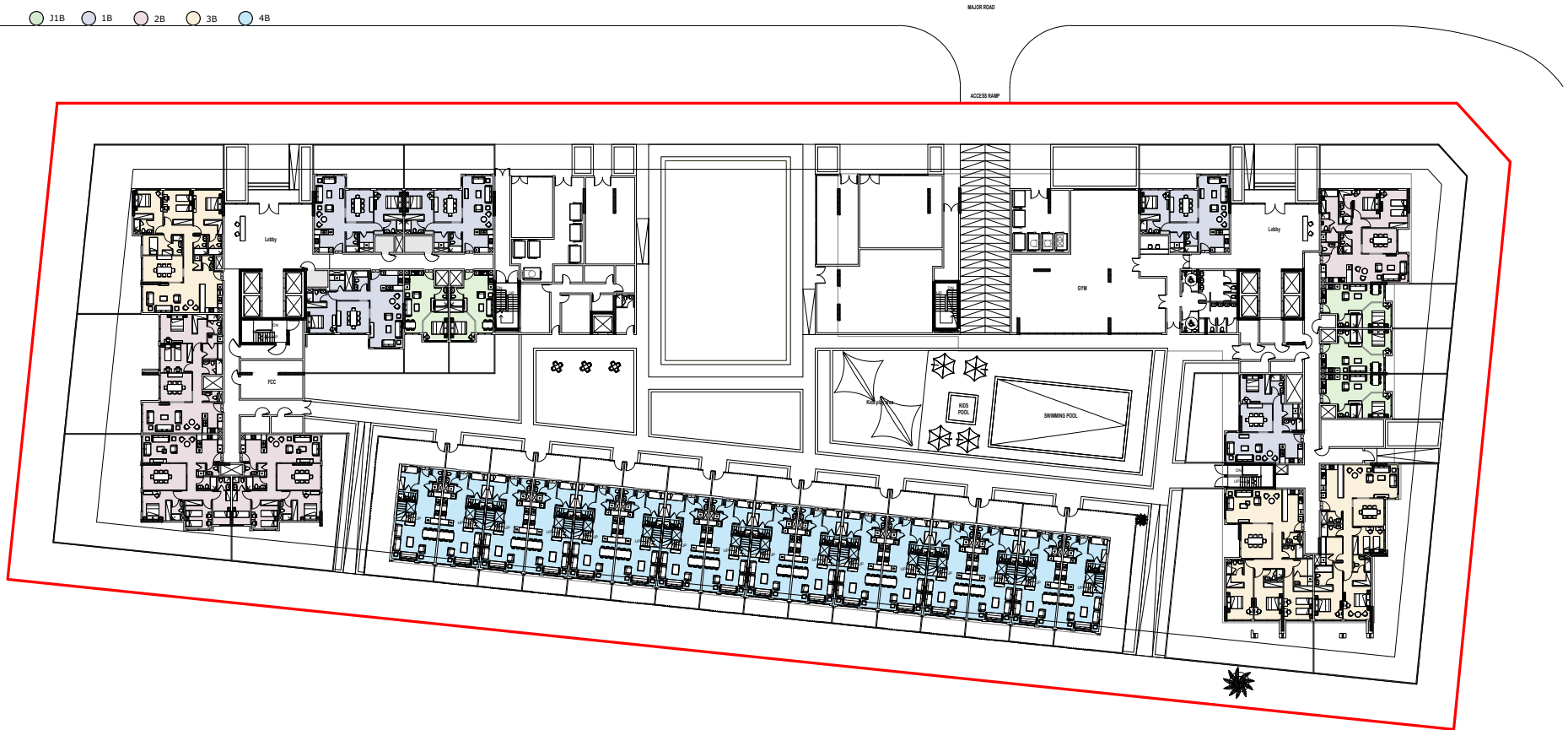
● 11B ● 1B ● 2B ● 3B ● 4B



# SELINA BAY

## GROUND FLOOR PLAN

● 11B ● 1B ● 2B ● 3B ● 4B



---

# SELINA BAY

## FIRST FLOOR PLAN

○ 11B ○ 1B ○ 2B ○ 3B ○ 4B



---

# SELINA BAY

TYPICAL 2<sup>nd</sup> to 14<sup>th</sup>

- 11B
- 1B
- 2B
- 3B
- 4B

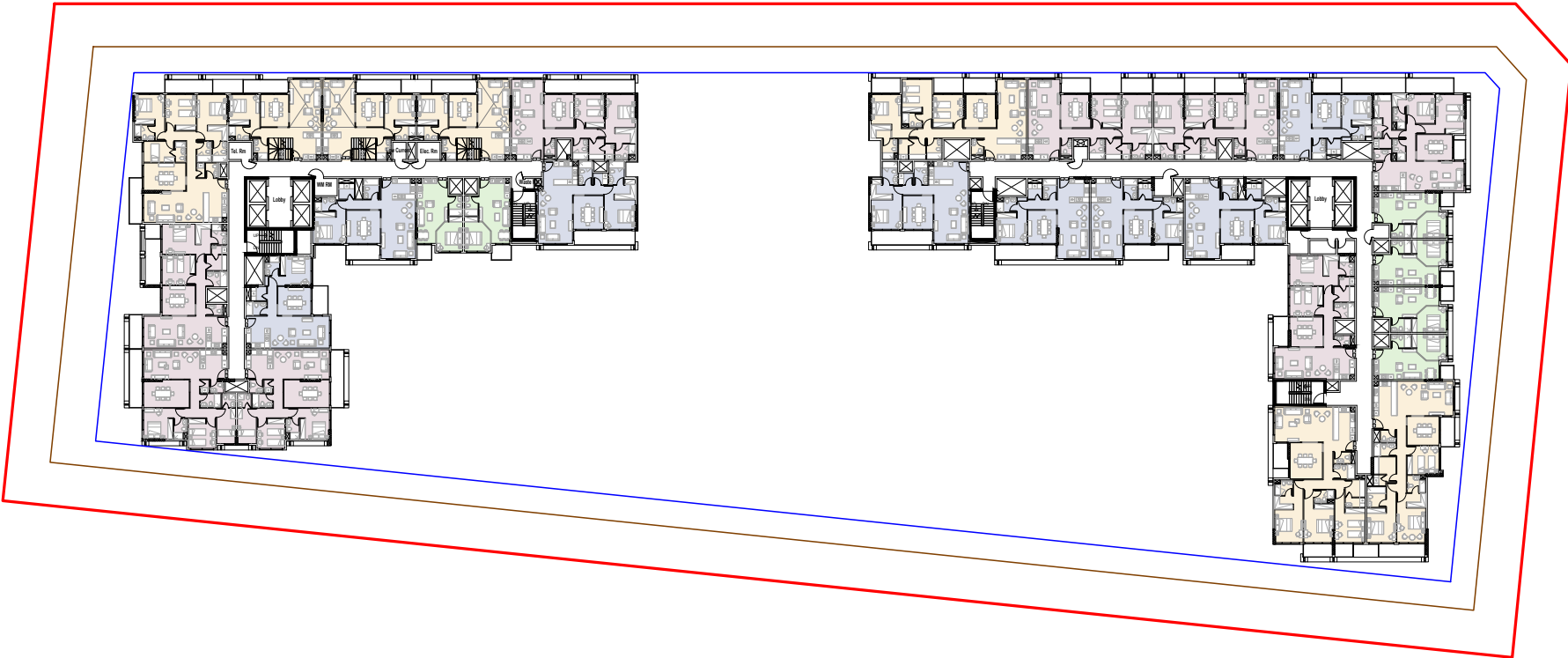


---

# SELINA BAY

## TYPICAL 15<sup>th</sup>

- 11B
- 1B
- 2B
- 3B
- 4B

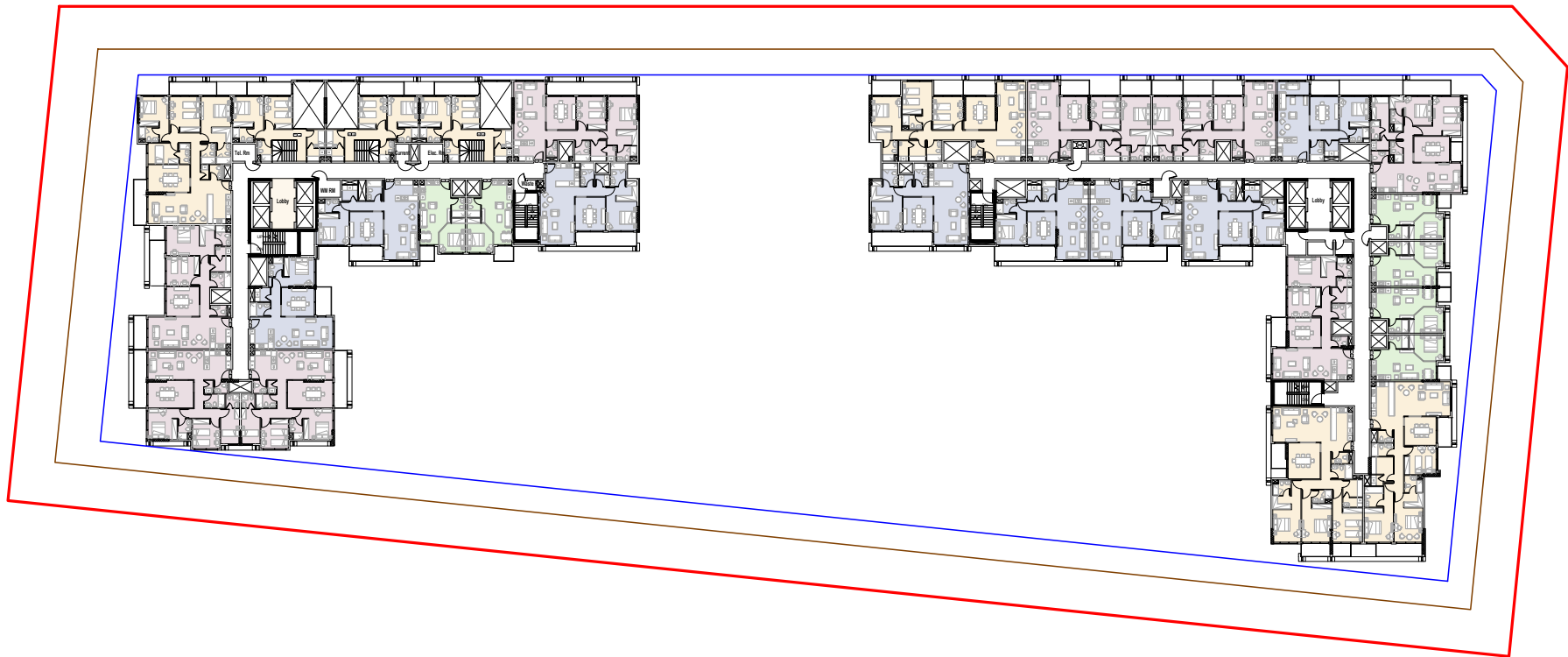


---

# SELINA BAY

## TYPICAL 16<sup>th</sup>

○ 11B ○ 1B ○ 2B ○ 3B ○ 4B

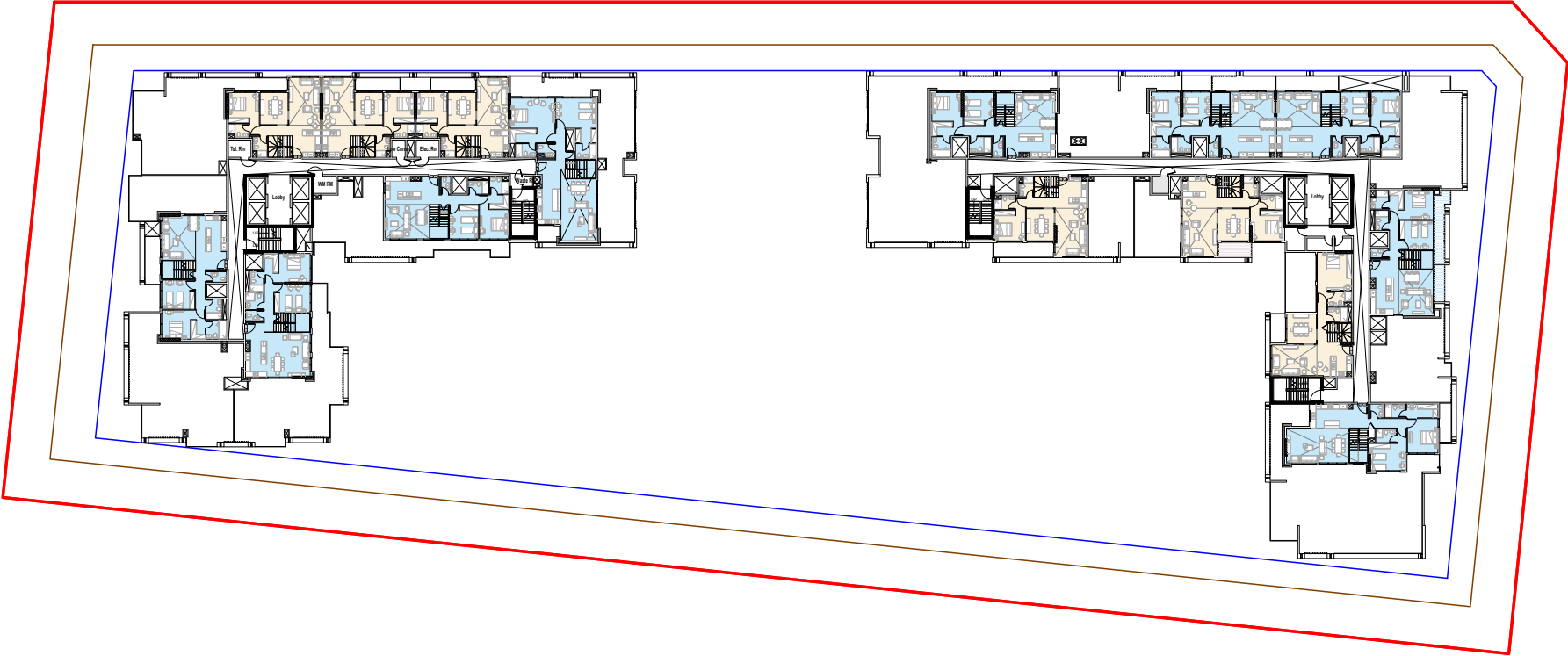


---

# SELINA BAY

## TYPICAL 17<sup>th</sup>

- 11B
- 1B
- 2B
- 3B
- 4B



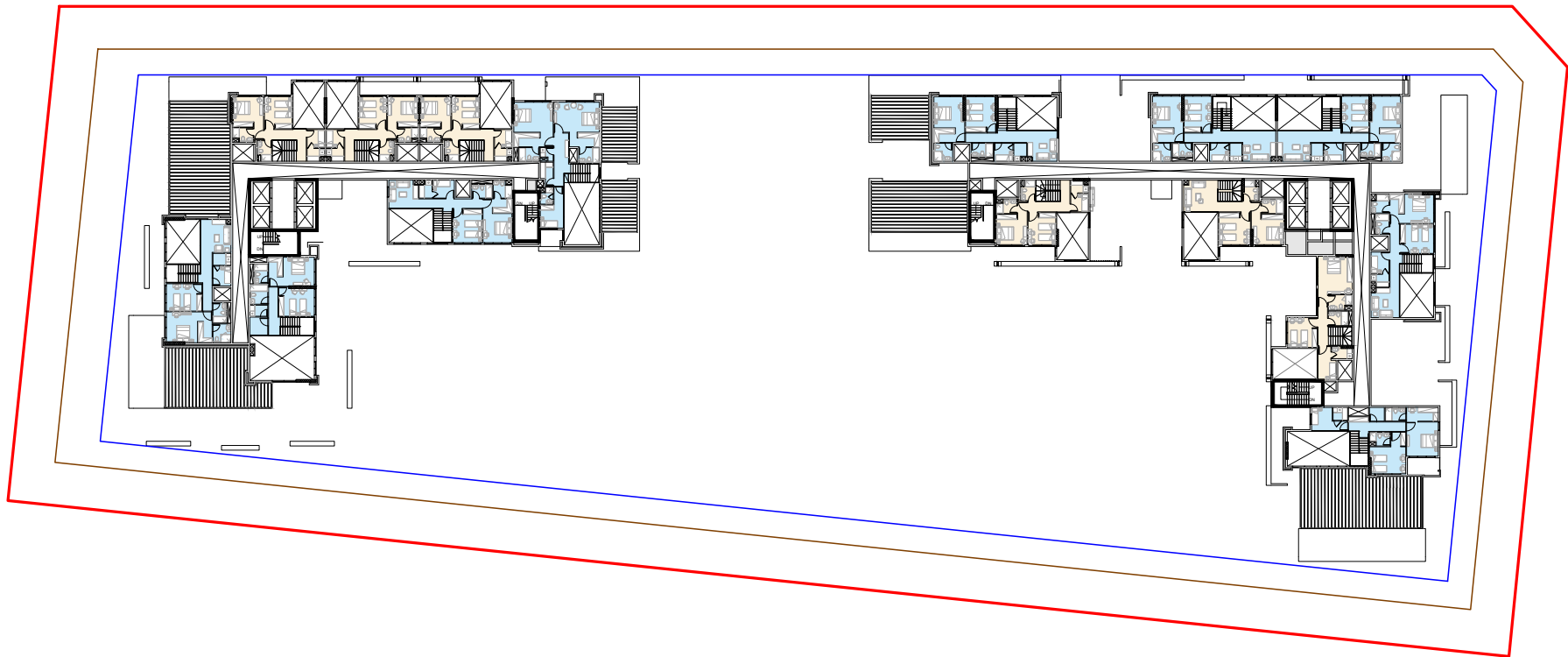


---

# SELINA BAY

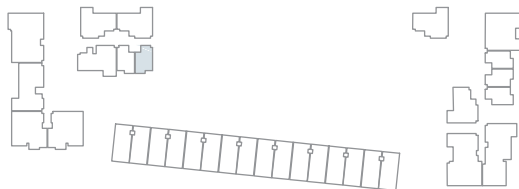
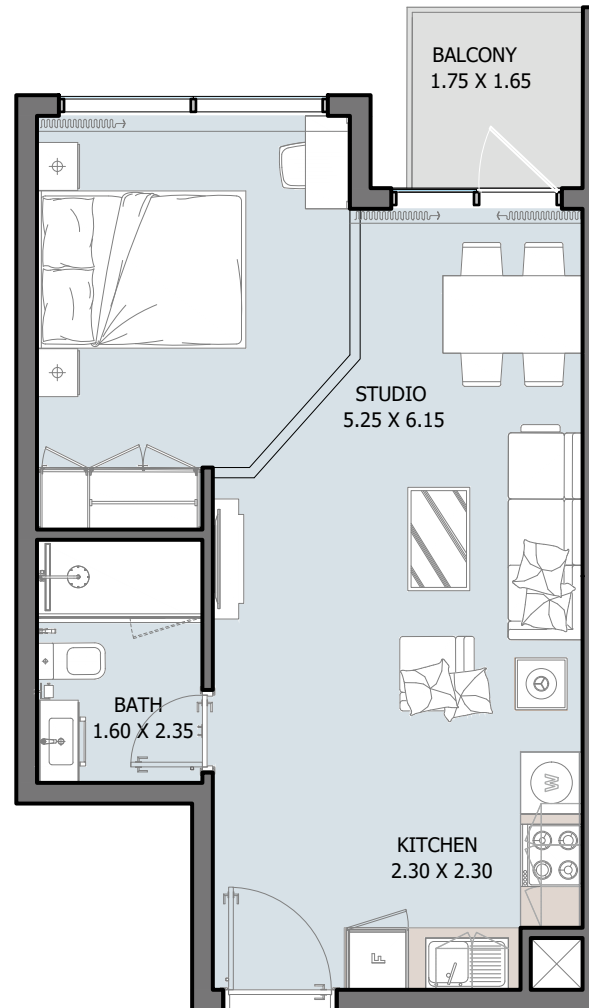
## TYPICAL 18<sup>th</sup>

○ 11B ○ 1B ○ 2B ○ 3B ○ 4B



# ST

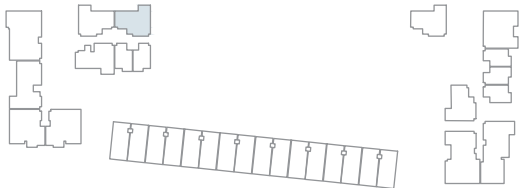
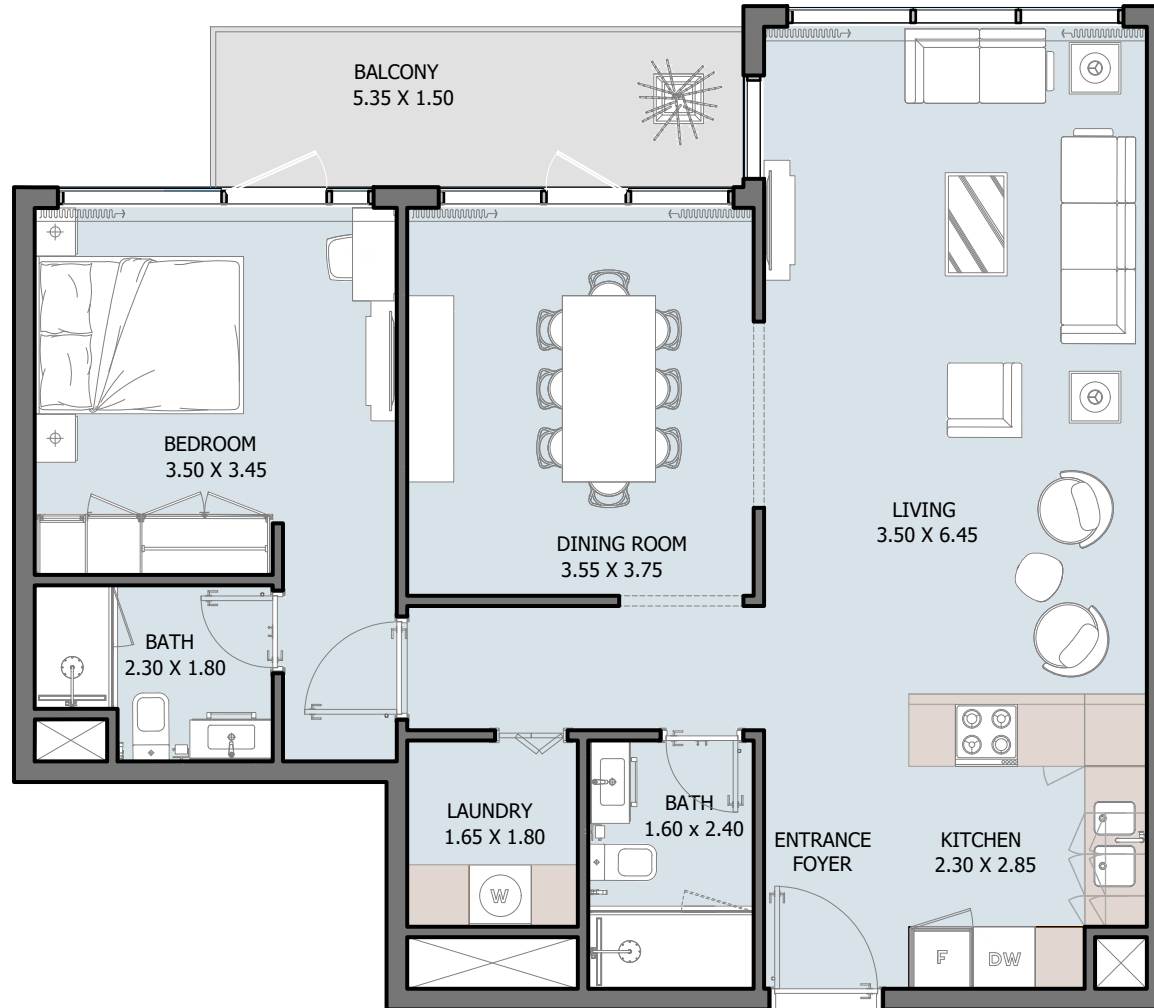
From Ground to 16<sup>th</sup> Floor



Internal Area	417.53 to 421.51 sq.ft
Outdoor Area	25.83 to 444.87 sq.ft
Total Area	447.13 to 863.59 sq.ft

# 1B | Type A

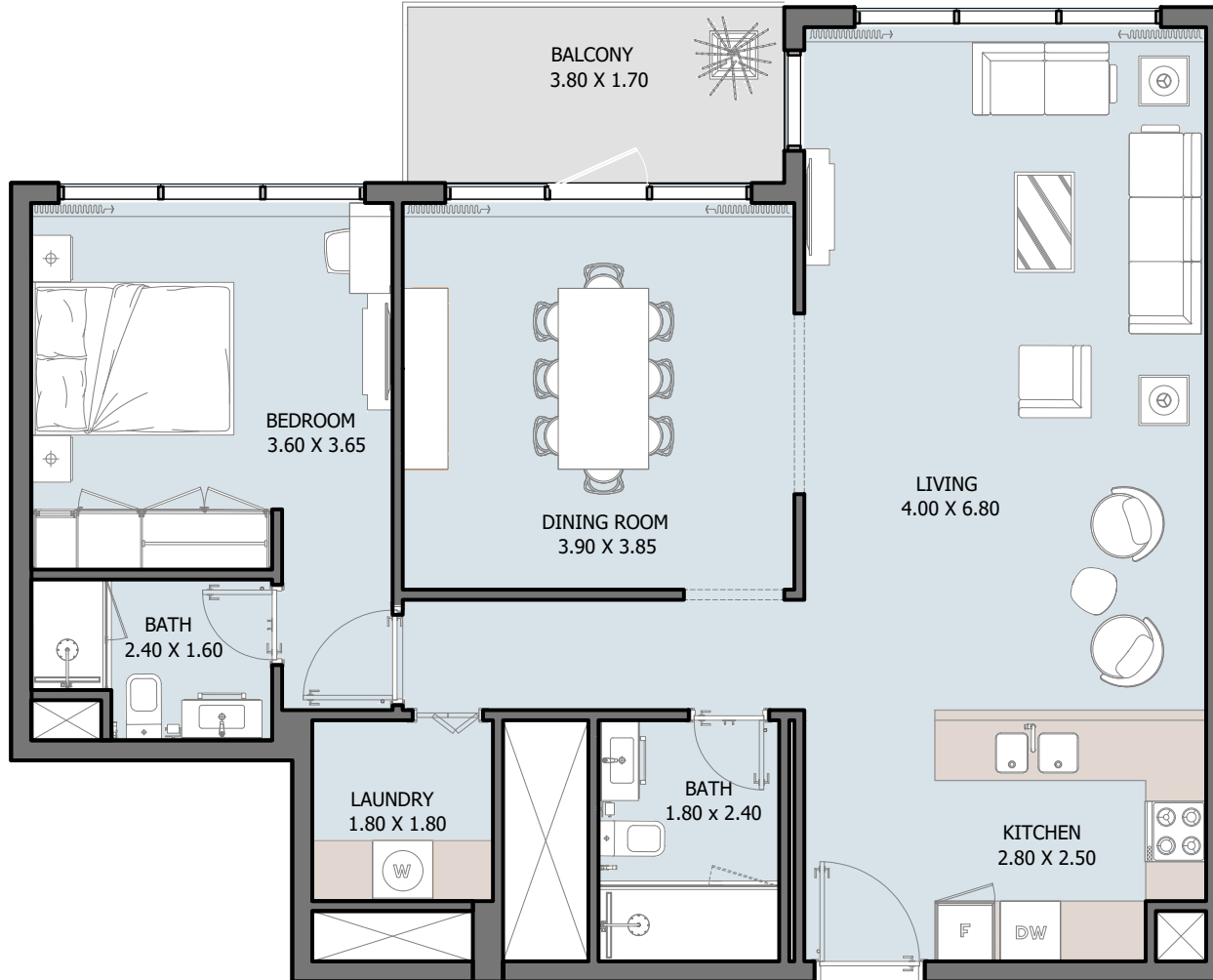
From Ground to 16<sup>th</sup> Floor



Internal Area	832.16 to 858.64 sq.ft
Outdoor Area	60.39 to 610.42 sq.ft
Total Area	905.78 to 1442.58 sq.ft

# 1B | Type B

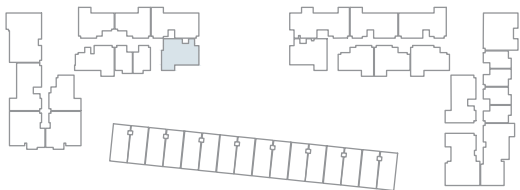
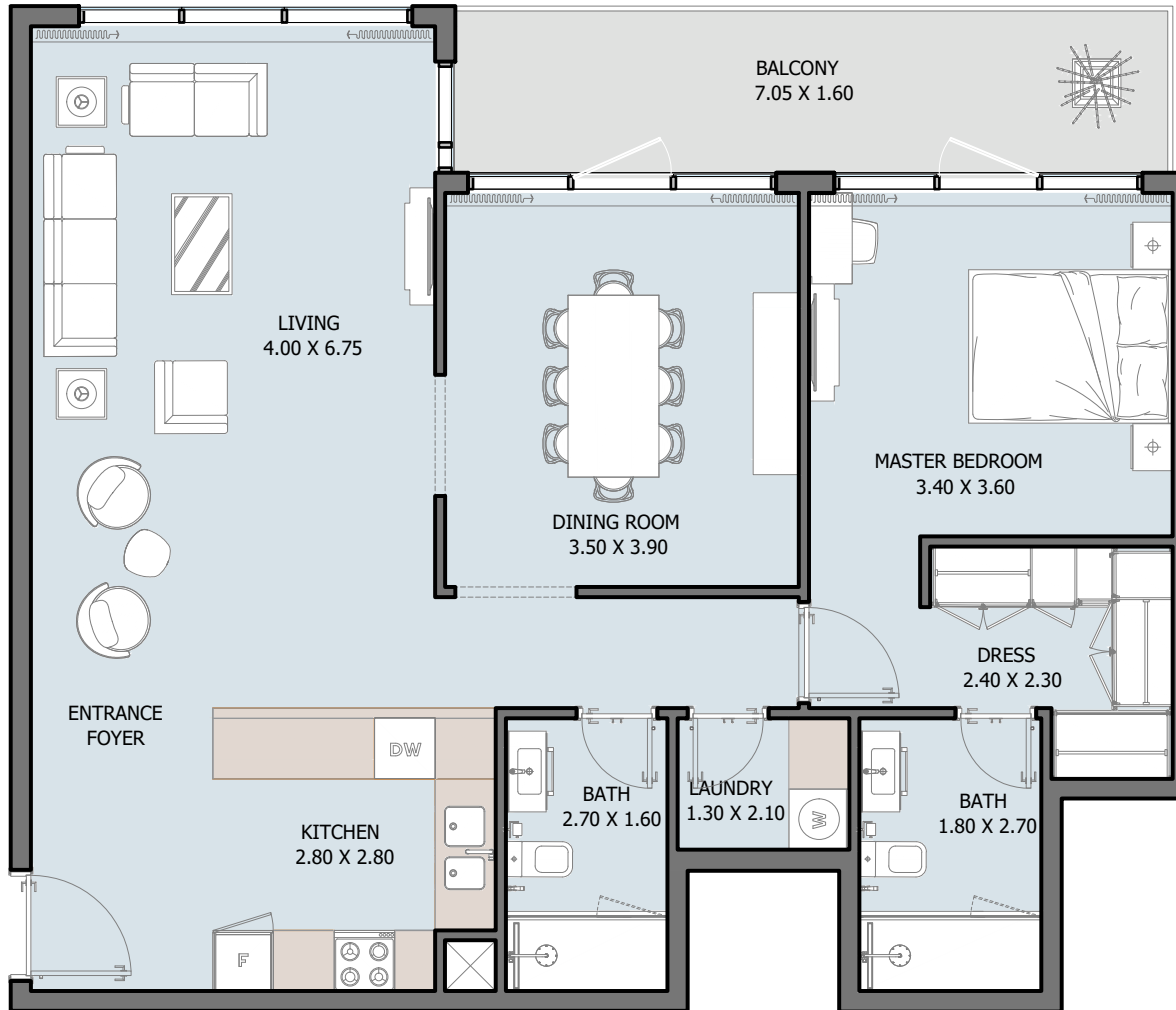
From Ground to 16<sup>th</sup> Floor



Internal Area	912.03 to 923 sq.ft
Outdoor Area	69.53 to 520.54 sq.ft
Total Area	981.56 to 1436.55 sq.ft

# 1B | Type C

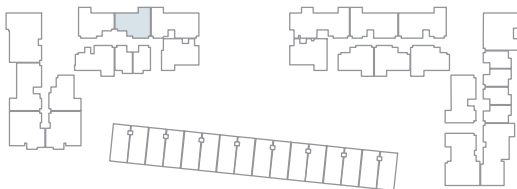
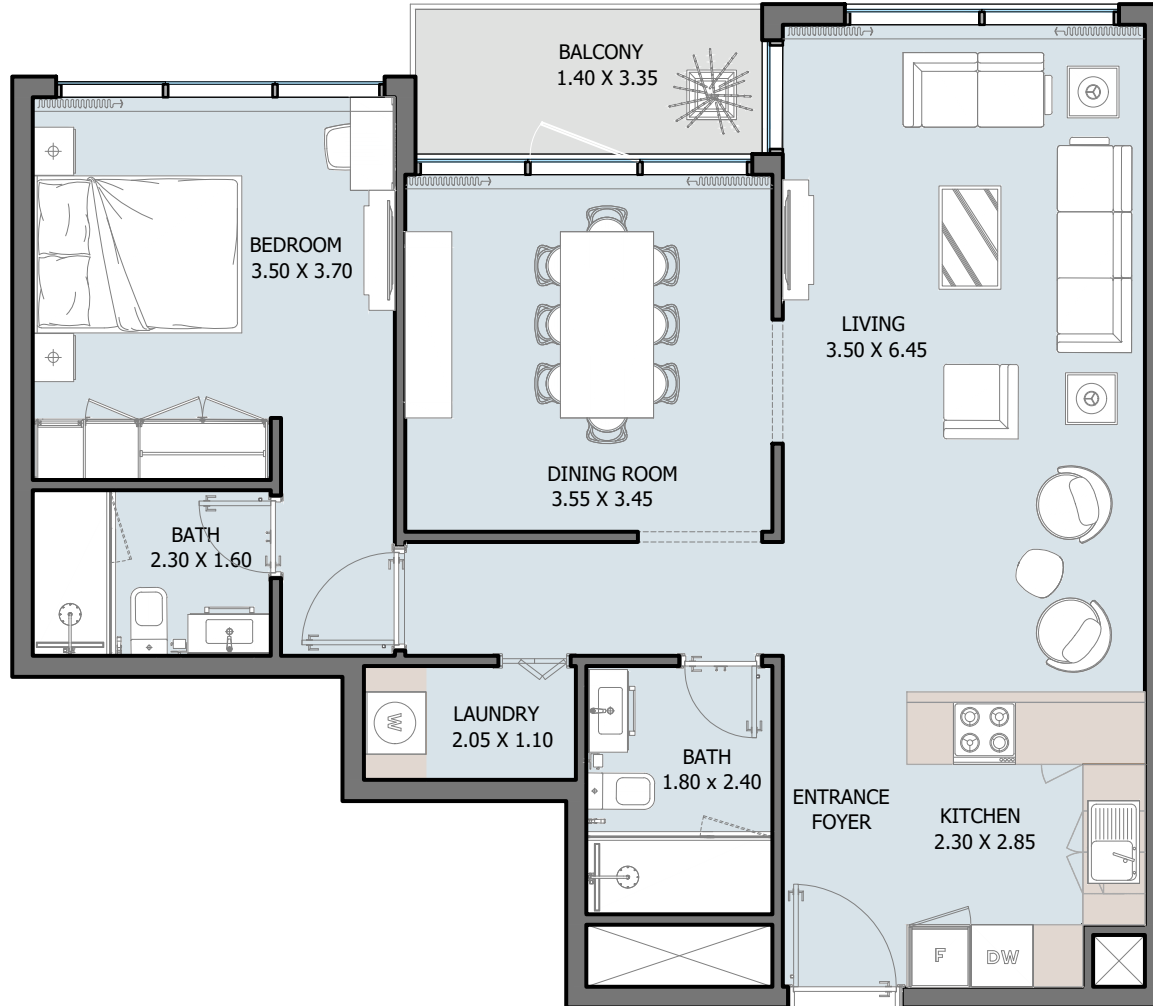
From Ground to 16<sup>th</sup> Floor



Internal Area	953.47 to 976.50 sq.ft
Outdoor Area	121.42 to 125.18 sq.ft
Total Area	1074.88 to 1097.92 sq.ft

# 1B | Type D

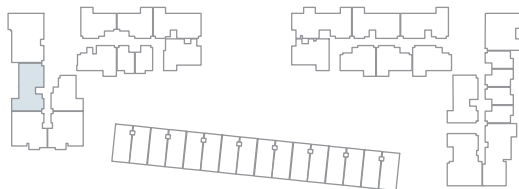
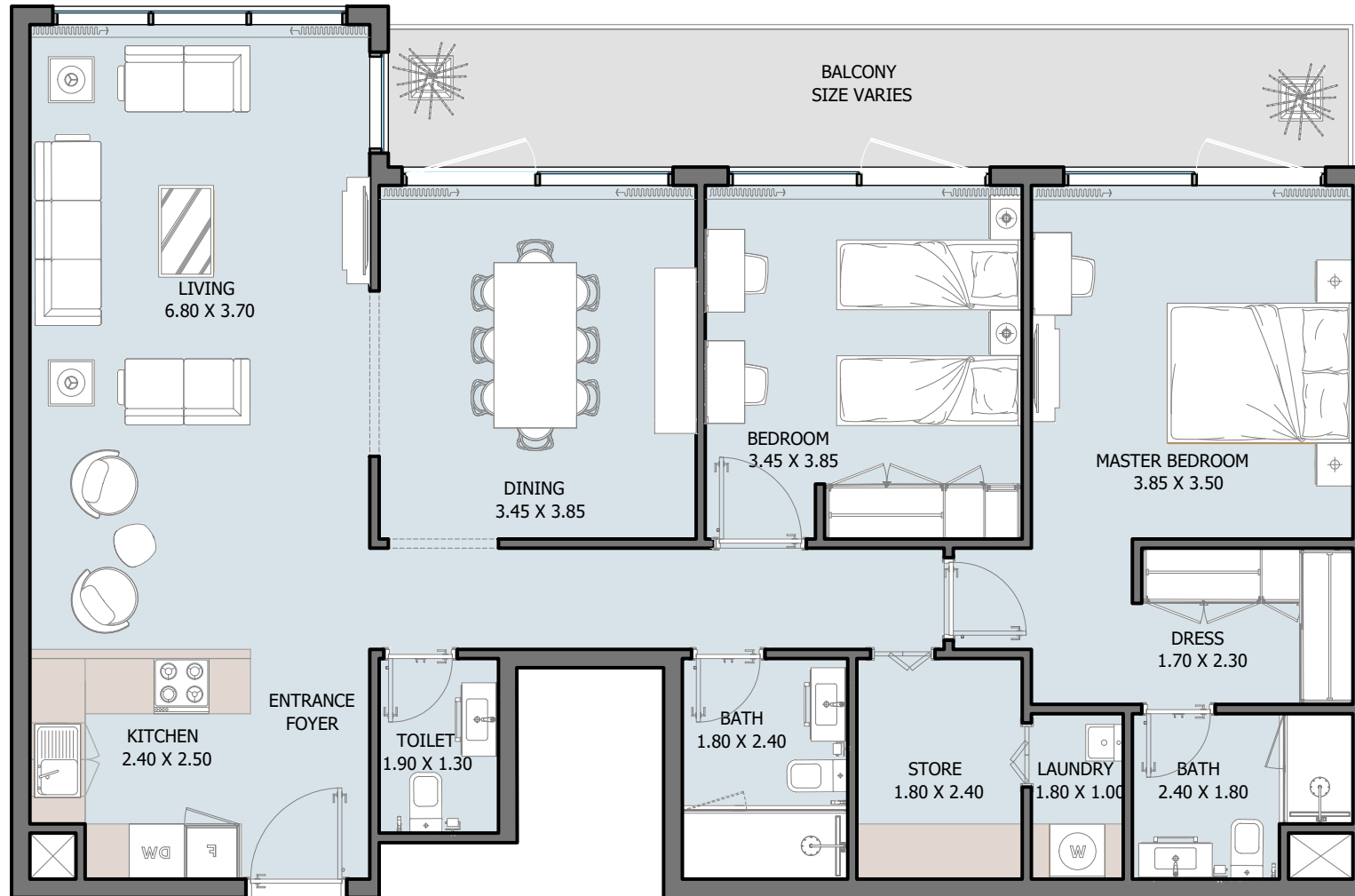
10<sup>th</sup> Floor



Internal Area	819.67 sq.ft
Outdoor Area	43.27 to 50.48 sq.ft
Total Area	862.94 to 870.15 sq.ft

# 2B | Type A

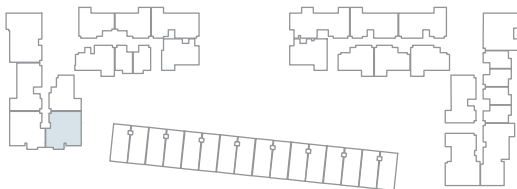
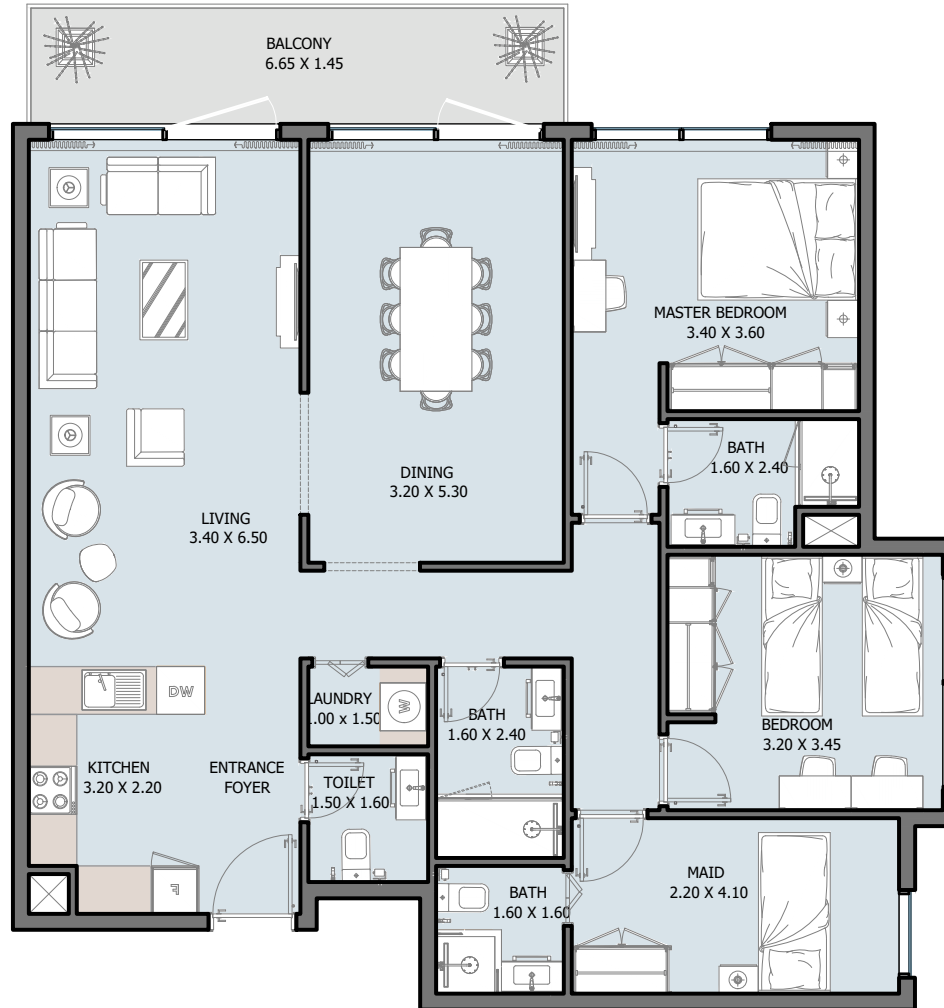
From Ground to 16<sup>th</sup> Floor



Internal Area	1169.28 to 1193.50 sq.ft
Outdoor Area	62.22 to 1548.39 sq.ft
Total Area	1233 to 2735 sq.ft

# 2B | Type B

From Ground to 16<sup>th</sup> Floor

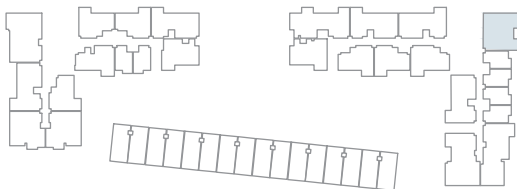
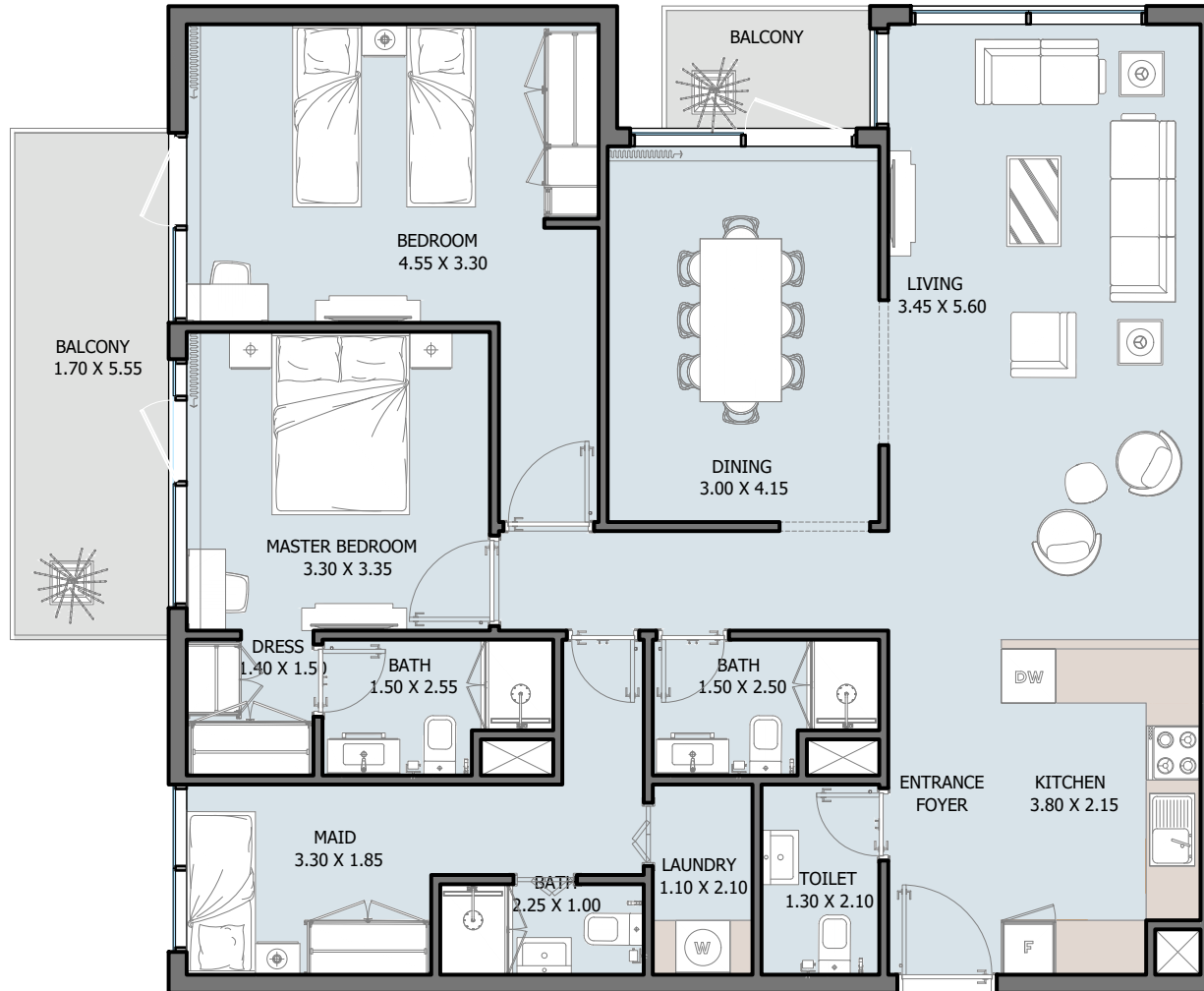


Internal Area	1172.51 to 1182.95 sq.ft
Outdoor Area	104.19 to 1874.75 sq.ft
Total Area	1278.54 to 3047.26 sq.ft



# 2B | Type C

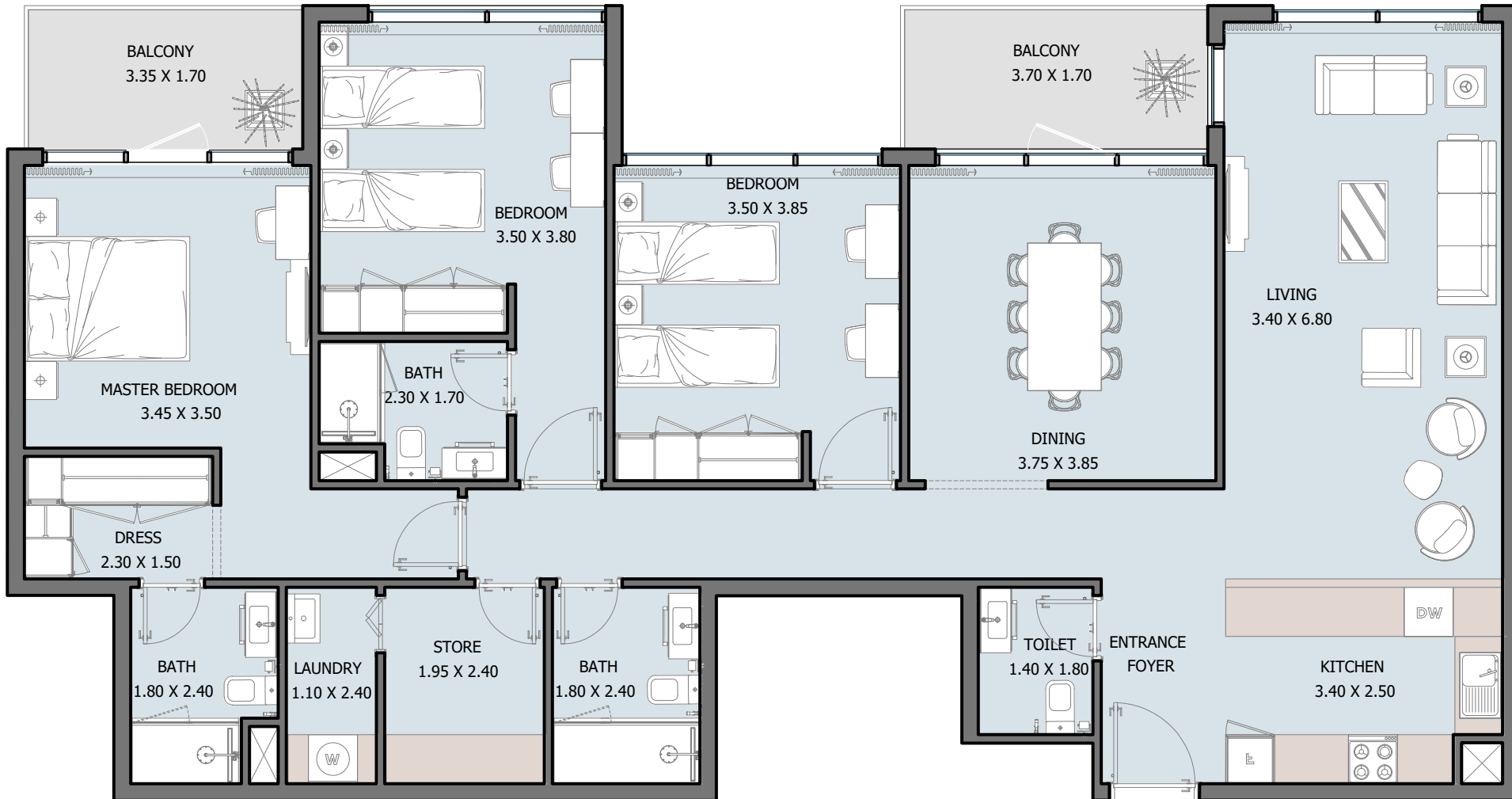
From Ground to 16<sup>th</sup> Floor



Internal Area	1207.06 to 1211.58 to sq.ft
Outdoor Area	133.04 to 1744.94 sq.ft
Total Area	1343.55 to 2952 sq.ft

# 3B | Type A

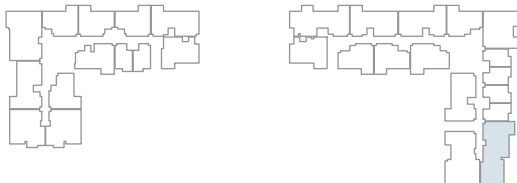
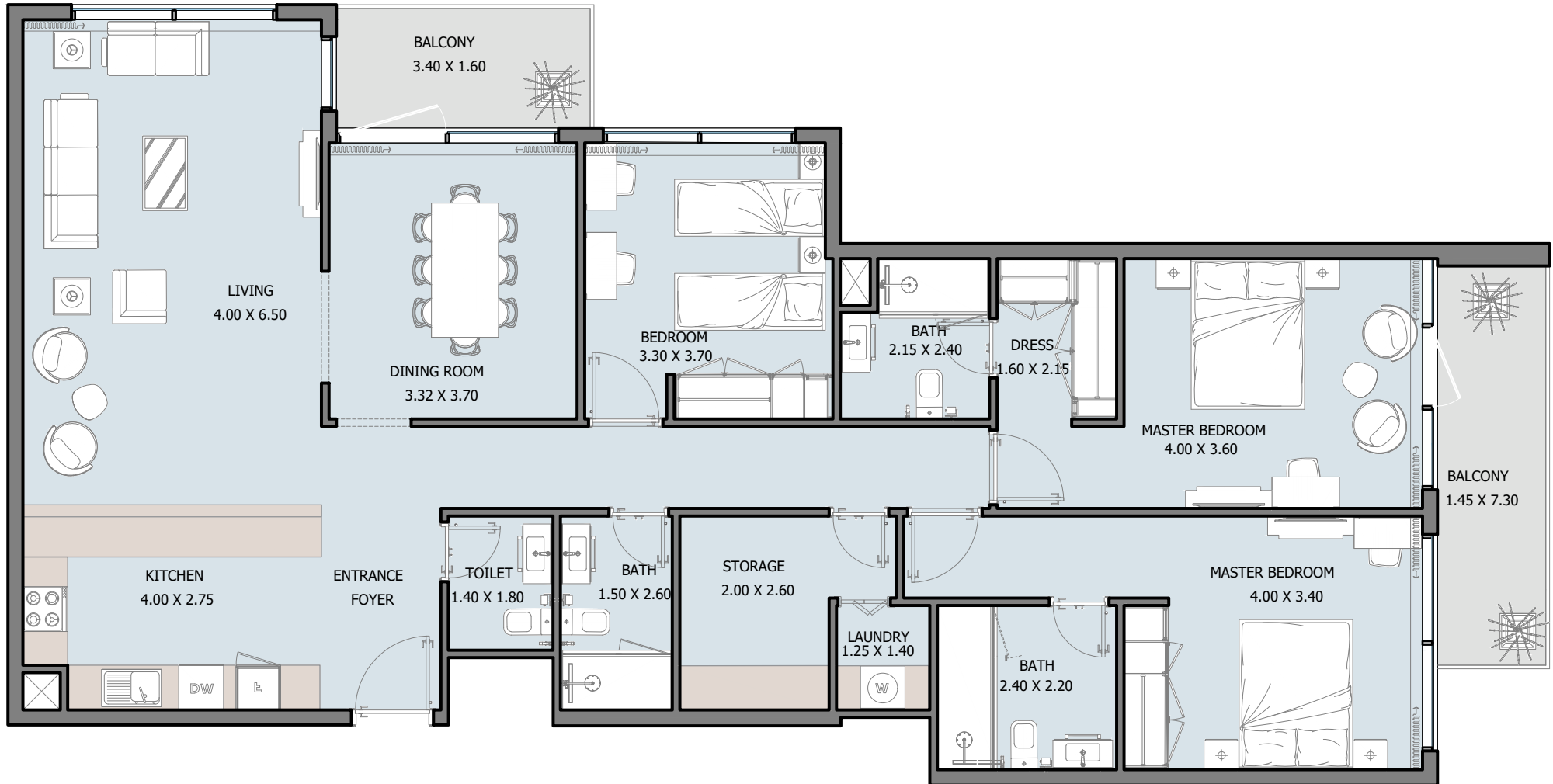
From 1<sup>st</sup> to 16<sup>th</sup> Floor



Internal Area	1457.54 to 1518.46 sq.ft
Outdoor Area	128.95 to 166.30 sq.ft
Total Area	1586.49 to 1684.77 sq.ft

# 3B | Type B

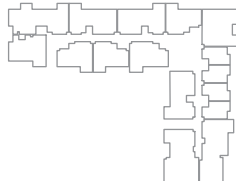
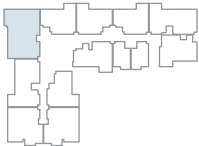
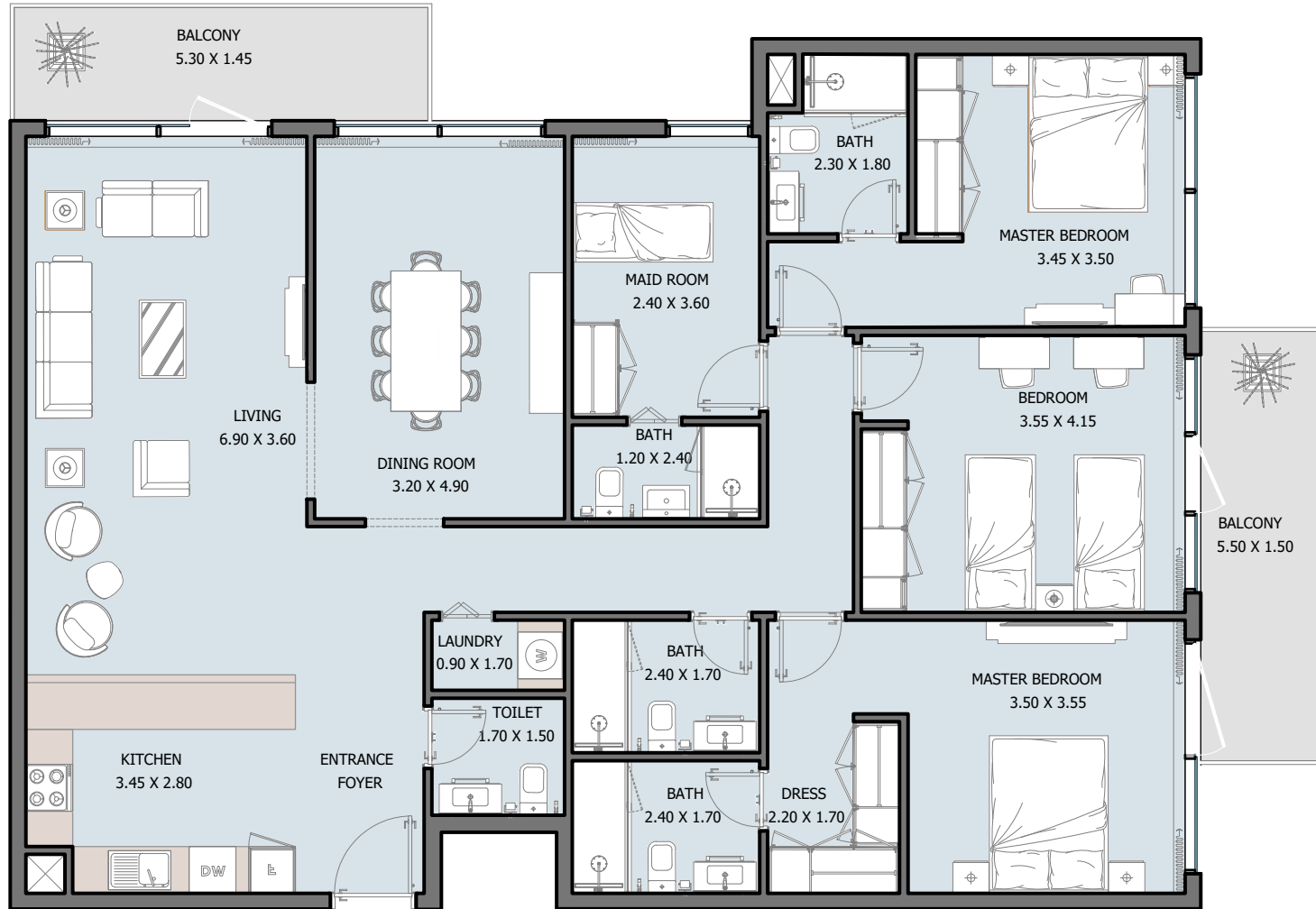
From Ground to 16<sup>th</sup> Floor



Internal Area	1505.22 to 1515.56 sq.ft
Outdoor Area	142.08 to 2108.97 sq.ft
Total Area	1656.89 to 3614.19 sq.ft

# 3B | Type C

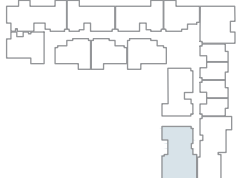
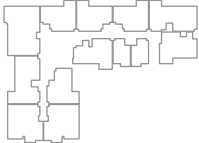
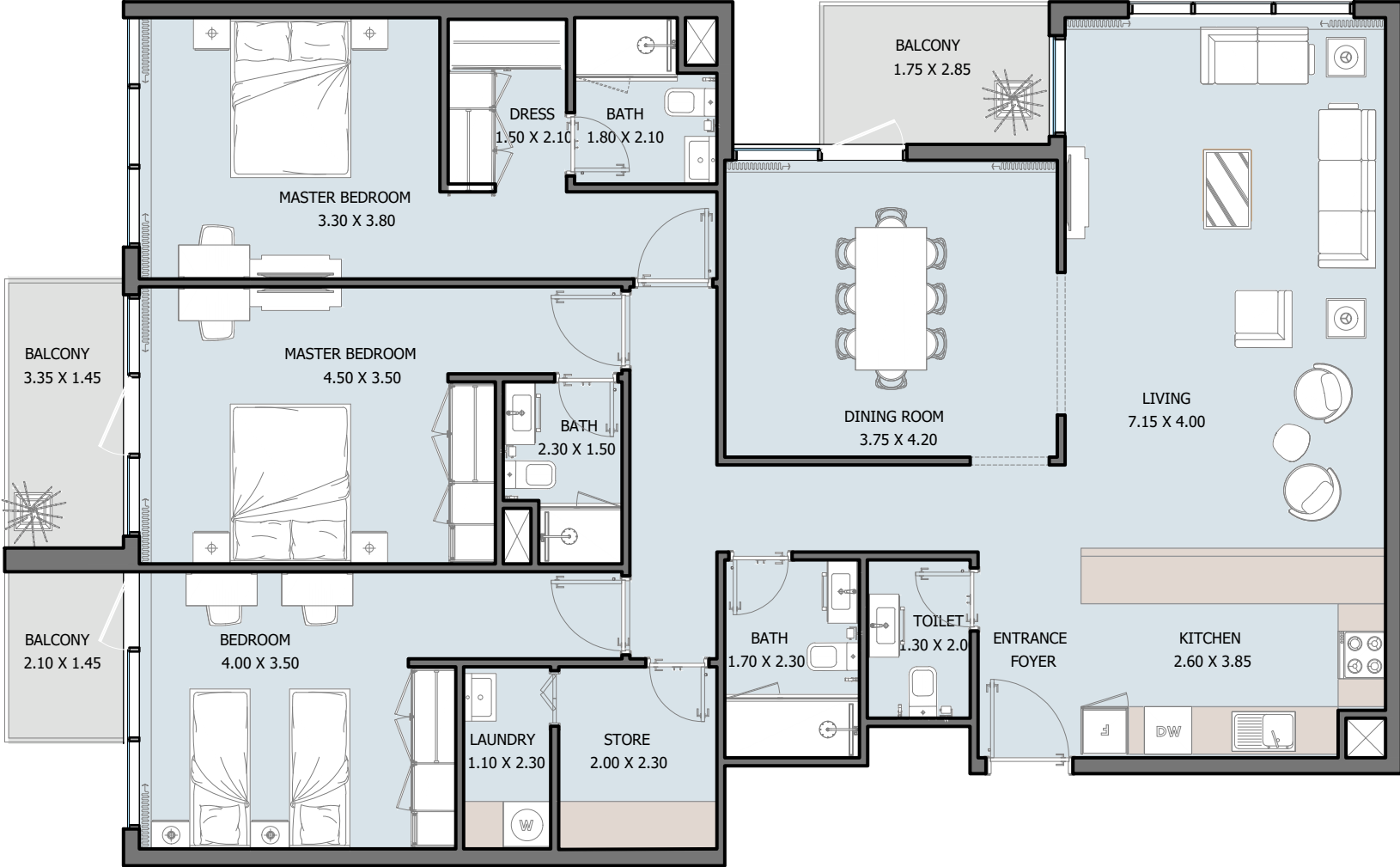
From Ground to 16<sup>th</sup> Floor



Internal Area	1582.62 to 1593.27 sq.ft
Outdoor Area	171.47 to 1954.51 sq.ft
Total Area	1764.74 to 3537.13 sq.ft

# 3B | Type D

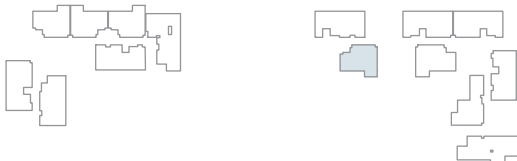
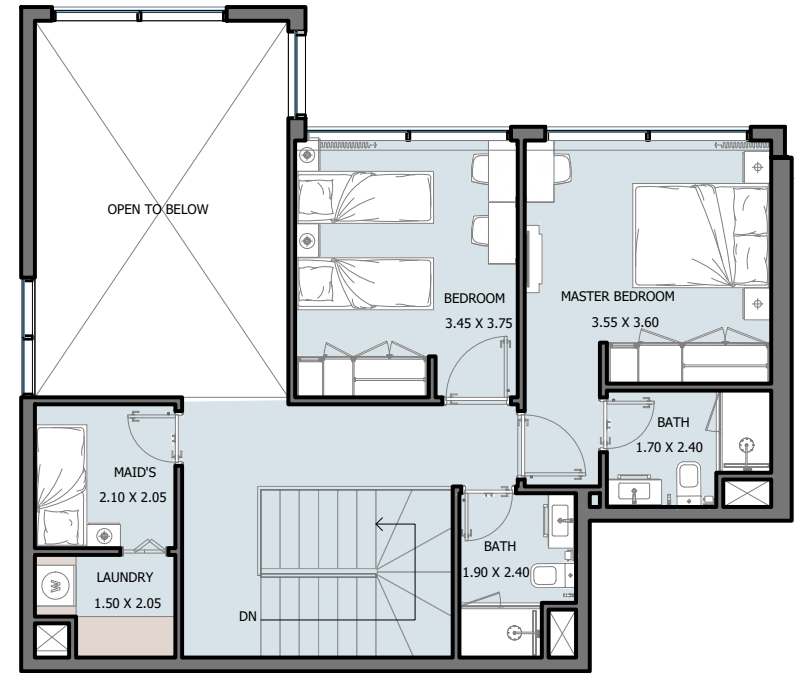
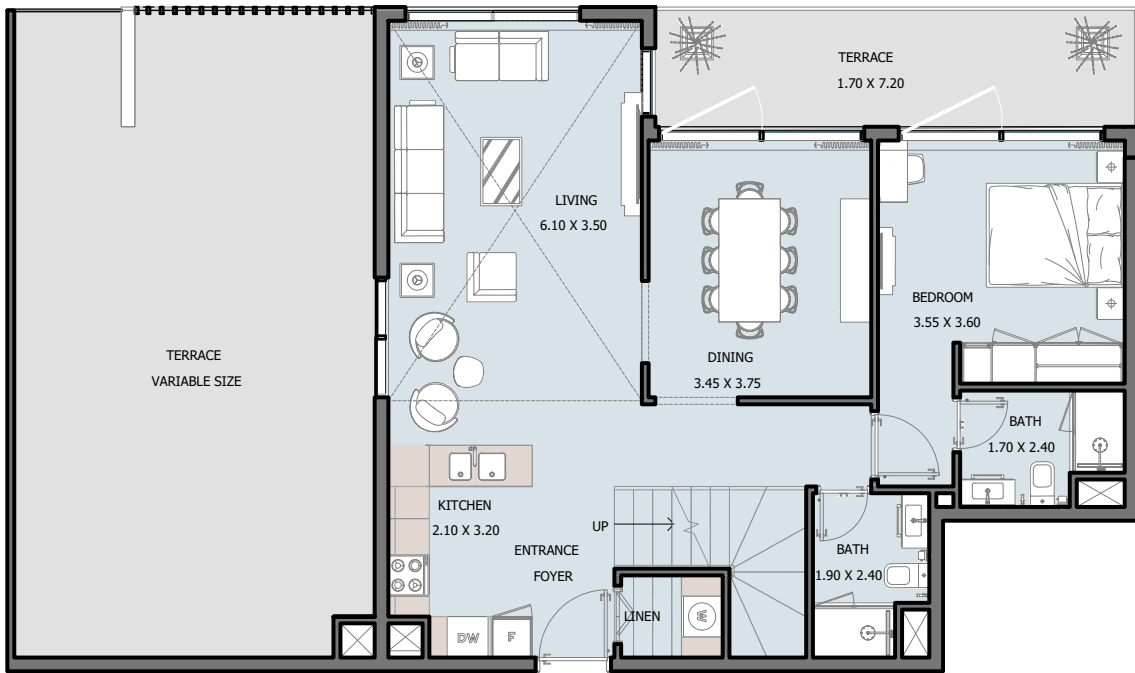
From Ground to 16<sup>th</sup> Floor



Internal Area	1570.02 to 1579.71 sq.ft
Outdoor Area	138.75 to 2096.70 sq.ft
Total Area	1718.46 to 3666.72 sq.ft

# 3B | Penthouse Type A

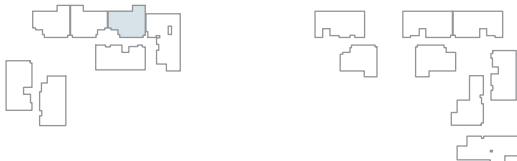
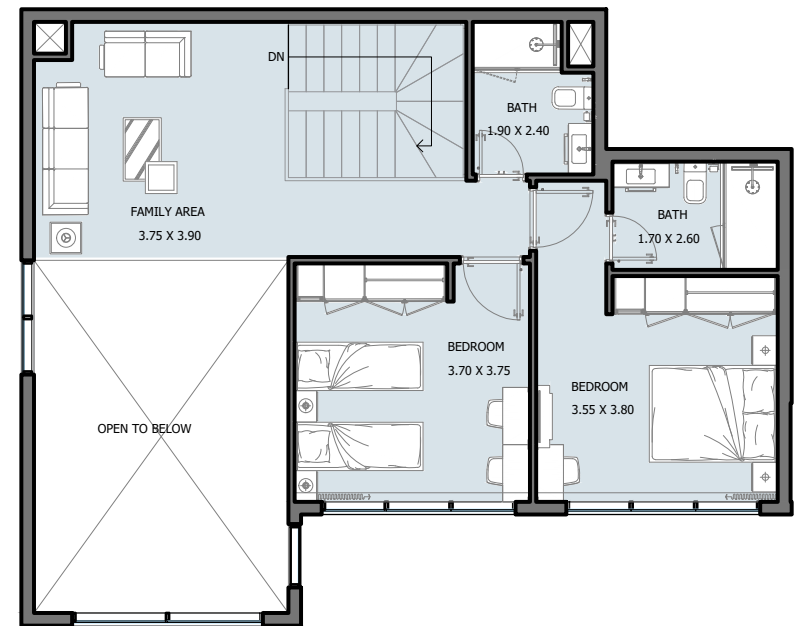
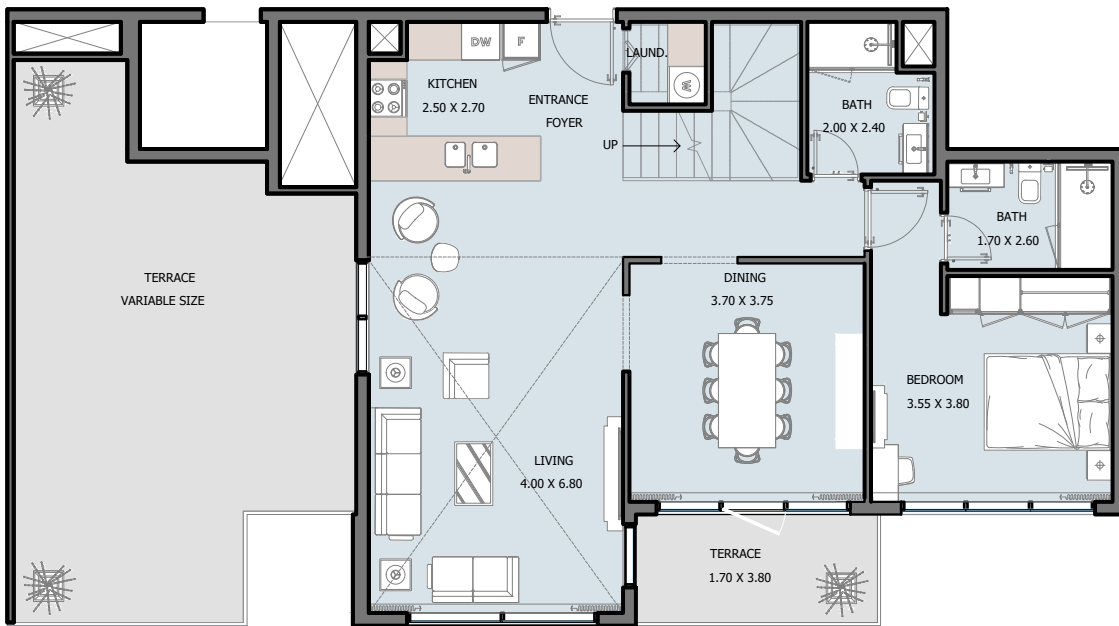
17<sup>th</sup> Floor



Internal Area	1513.73 to 1518.14 sq.ft
Outdoor Area	83.20 to 1301.89 sq.ft
Total Area	1597.69 to 2815.62 sq.ft

# 3B | Penthouse Type B

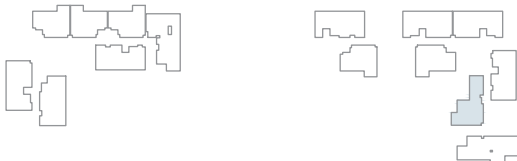
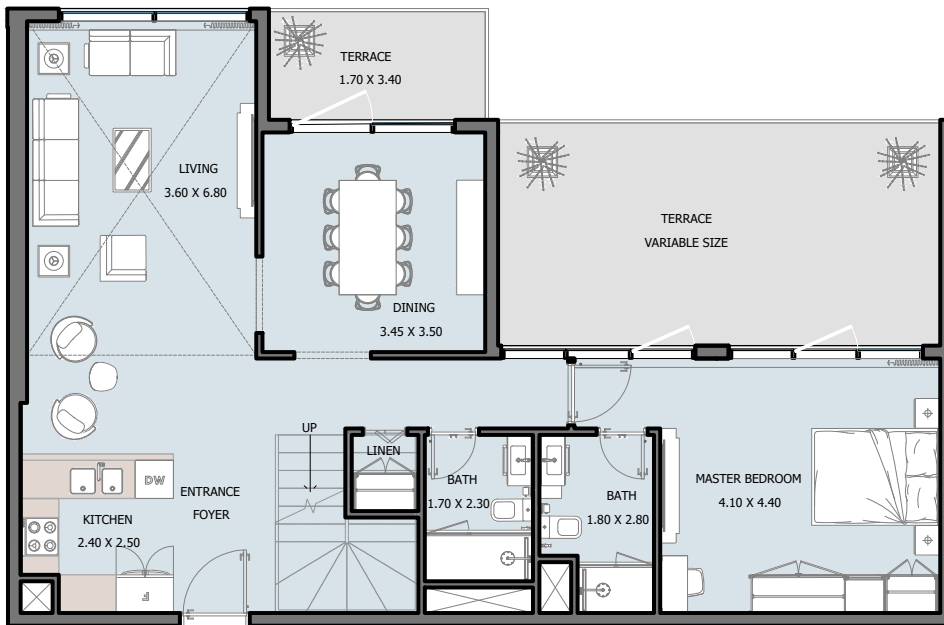
17<sup>th</sup> Floor



Internal Area	1670.88 sq.ft
Outdoor Area	534.75 sq.ft
Total Area	2205.63 sq.ft

# 3B | Penthouse Type C

17<sup>th</sup> Floor

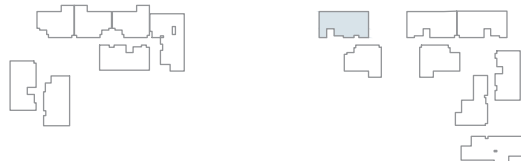
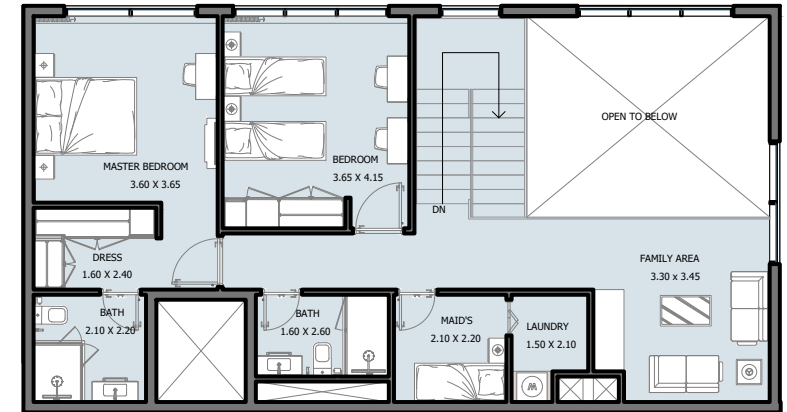


Internal Area	1649.57 sq.ft
Outdoor Area	323.99 sq.ft
Total Area	1973.56 sq.ft



# 4B | Penthouse Type A

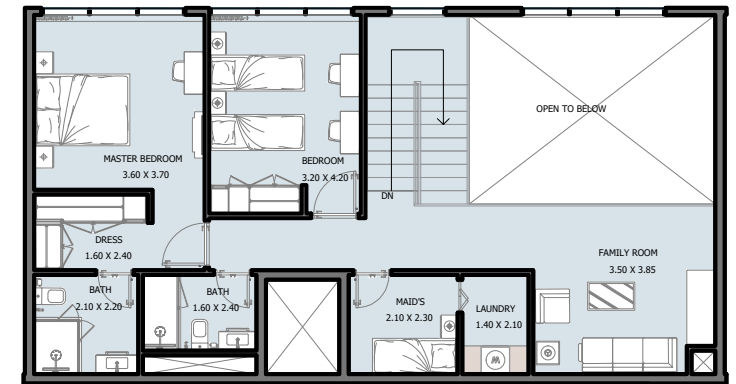
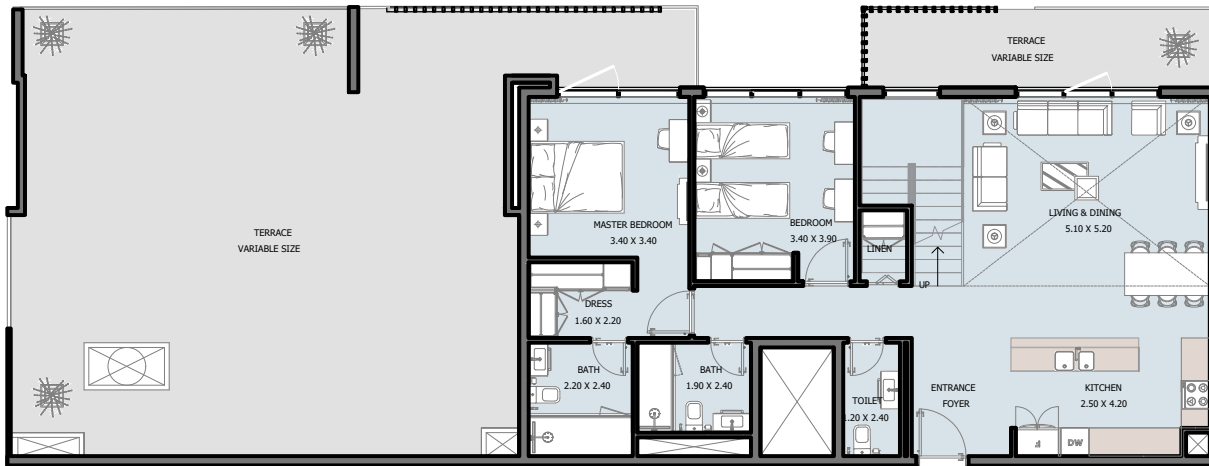
17<sup>th</sup> Floor



Internal Area	1996.06 sq.ft
Outdoor Area	2068.07 sq.ft
Total Area	4064.13 sq.ft

# 4B | Penthouse Type B

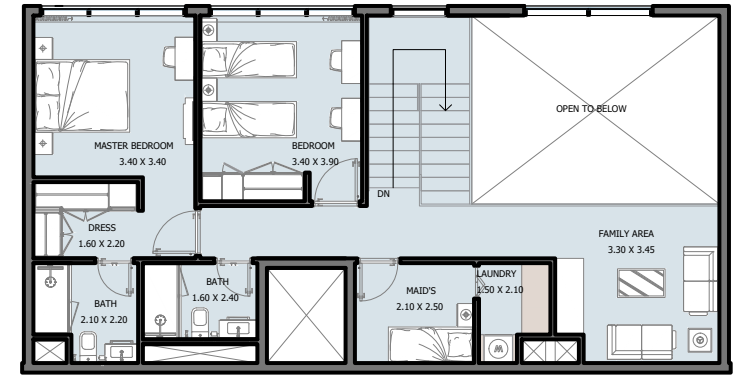
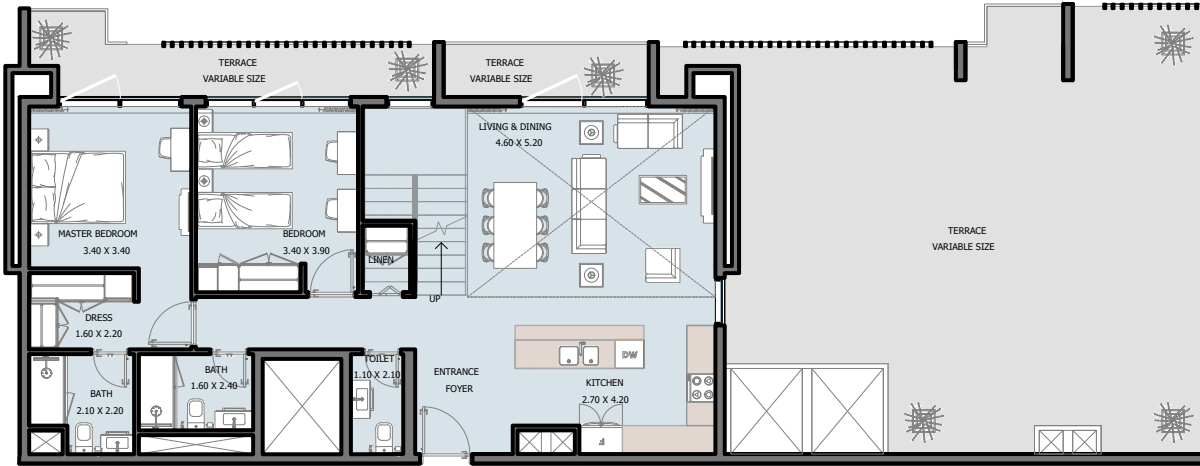
17<sup>th</sup> Floor



Internal Area	1988.20 to 2010.70 sq.ft
Outdoor Area	1188.01 to 2288.30 sq.ft
Total Area	3198.71 to 4276.50 sq.ft

# 4B | Penthouse Type C

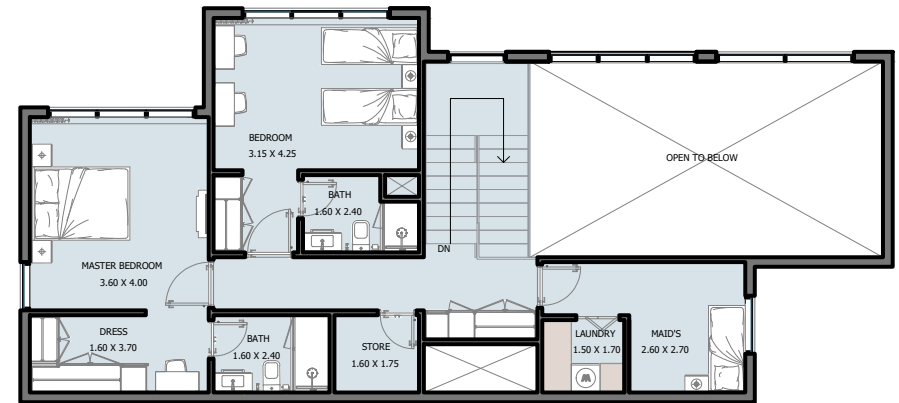
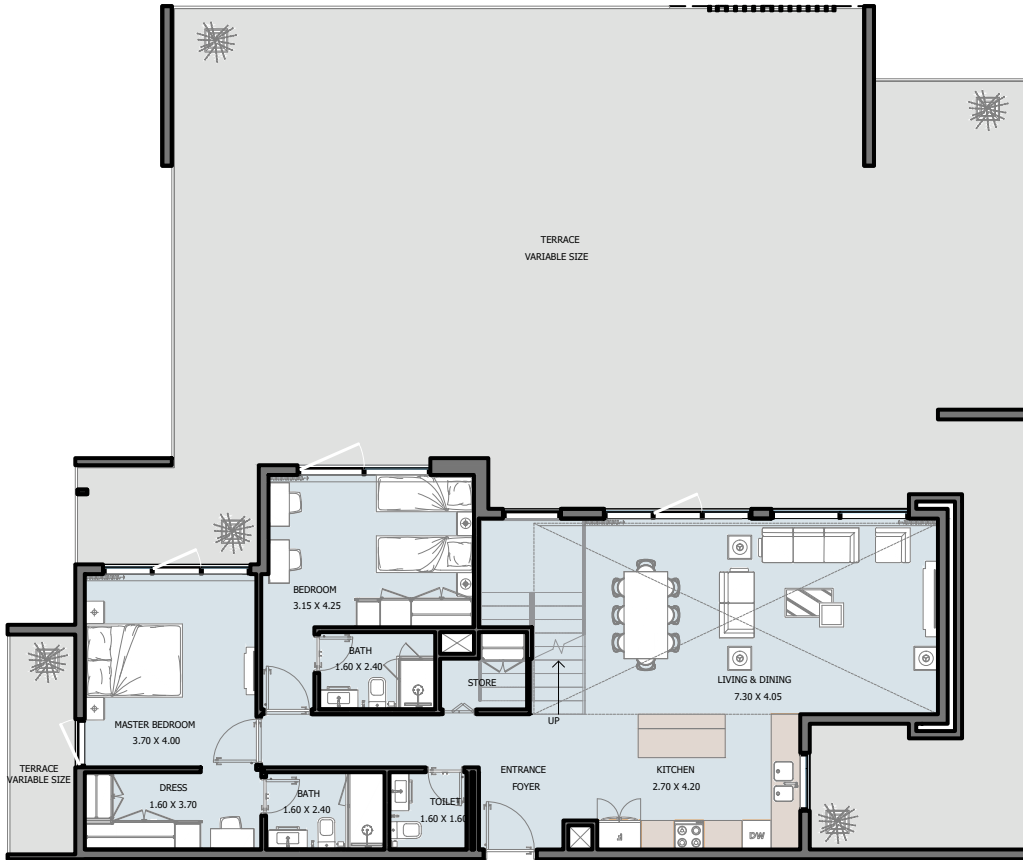
17<sup>th</sup> Floor



Internal Area	1899.72 to 1910.59 sq.ft
Outdoor Area	888.02 to 1048.30 sq.ft
Total Area	2798.61 to 2948.02 sq.ft

# 4B | Penthouse Type D

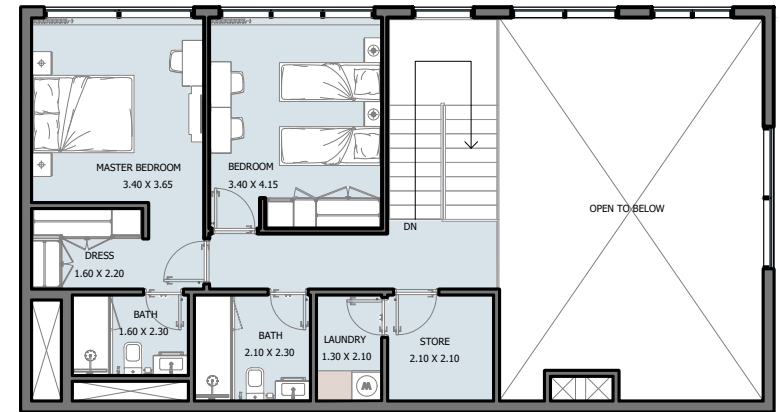
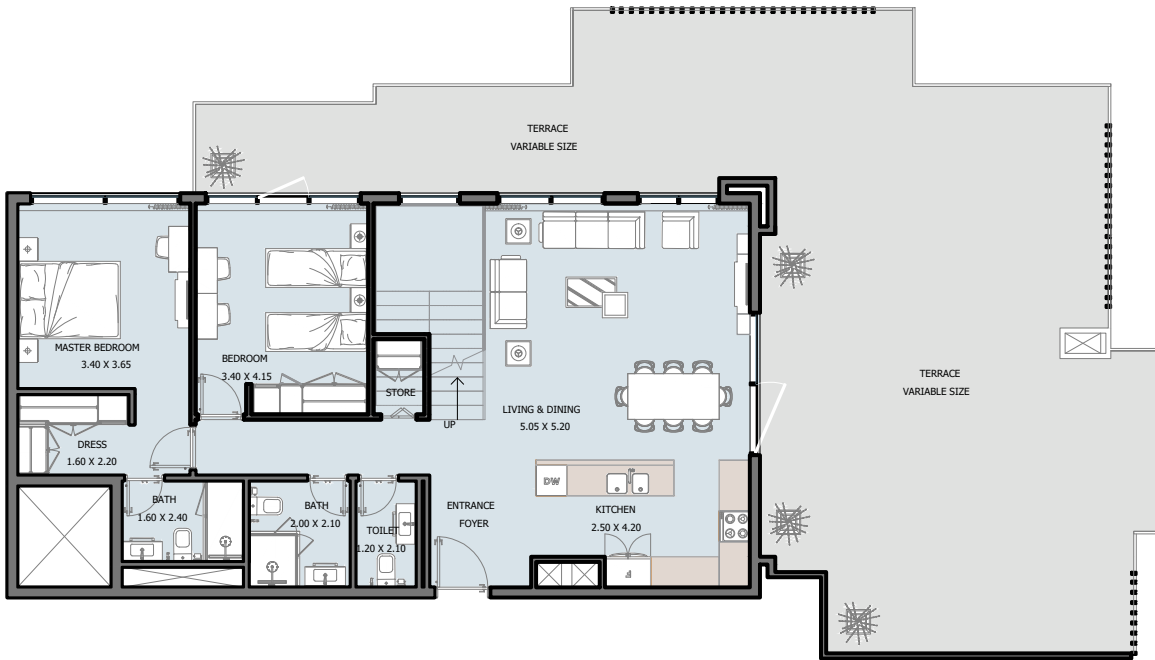
17<sup>th</sup> Floor



Internal Area	2036.64 sq.ft
Outdoor Area	2140.40 sq.ft
Total Area	4177.04 sq.ft

# 4B | Penthouse Type E

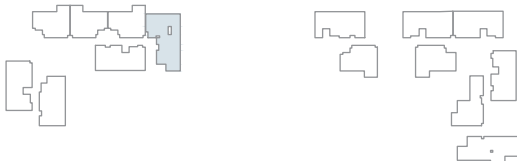
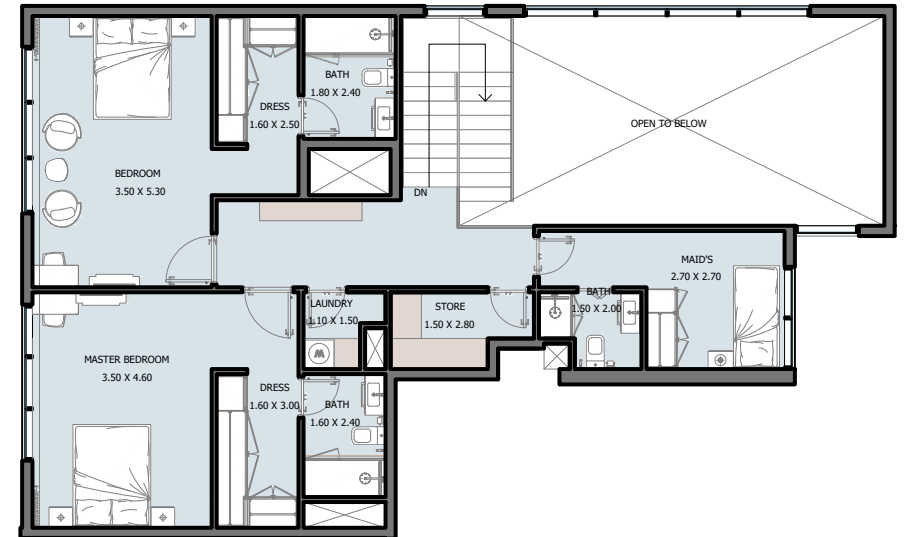
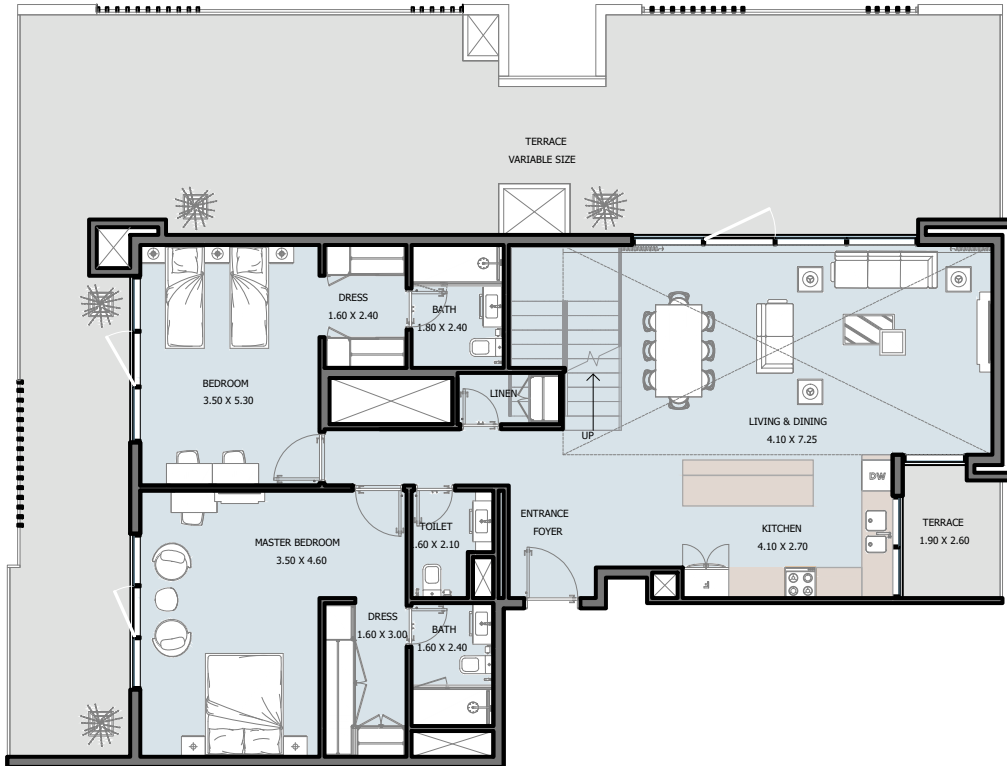
17<sup>th</sup> Floor



Internal Area	1810.17 sq.ft
Outdoor Area	1191.13 sq.ft
Total Area	3001.30 sq.ft

# 4B | Penthouse Type F

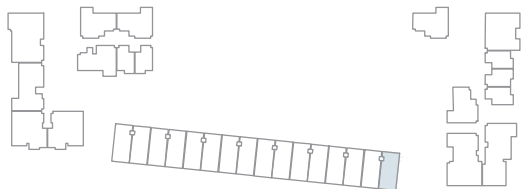
17<sup>th</sup> Floor



Internal Area	2395.18 sq.ft
Outdoor Area	1133.22 sq.ft
Total Area	3528.41 sq.ft

# 4B | TOWNHOUSE

## Ground Floor



Internal Area	1697.79 sq.ft
Outdoor Area	551.65 to 1080.05 sq.ft
Total Area	2247.50 to 2777.84 sq.ft