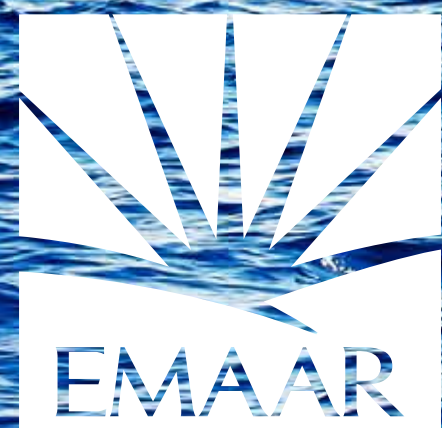


VIDA

RESIDENCES
DUBAI MARINA





THE RIVIERA OF THE GULF

Set sail from the yacht club, shop your heart out at Dubai Marina Mall and enjoy world-class dining, entertainment, hotels, spas and recreation all just steps away.





A VIEW OF OCEANIC PROPORTIONS

Take in the stunning view of the Dubai Marina as you've never seen it before.

AN OPPORTUNITY OF A LIFETIME

Enjoy exquisite service and the VIDA hotel luxury life style in addition to culinary experiences with a range of dining outlets, discover the area's nautical heritage with the Yacht Community.

VIDA
DUBAI MARINA



BALANCE AT THE HEIGHT OF LUXURY

Immerse yourself in lush surroundings and
discover a lifestyle of harmony with your
environment.



RIVIERA-STYLE LIVING

Immerses in vibrant colors, stylish design and cosmopolitan crowds, surrounded by white sandy beaches and the city's best dining, entertainment and leisure.



A NAUTICAL VISION

A stunning architecture allows light to pass through, giving the residence depth and character. The timber paneling of the walls highlights the nautical history.





SOAK UP LIFE
IN THE SUN

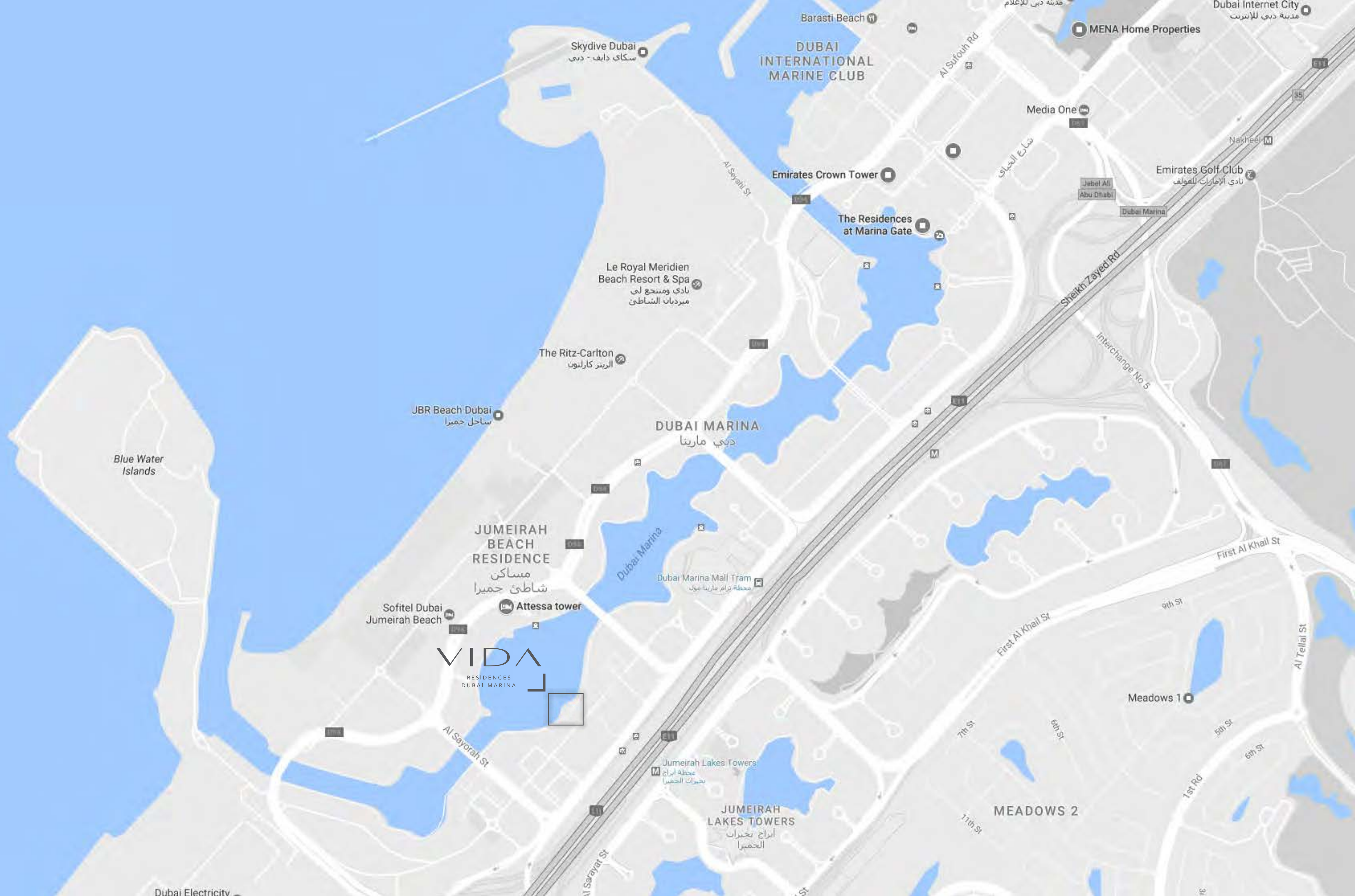
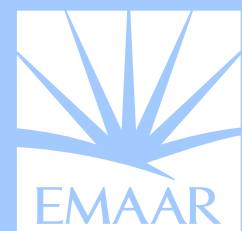




DA
NO RESORTS

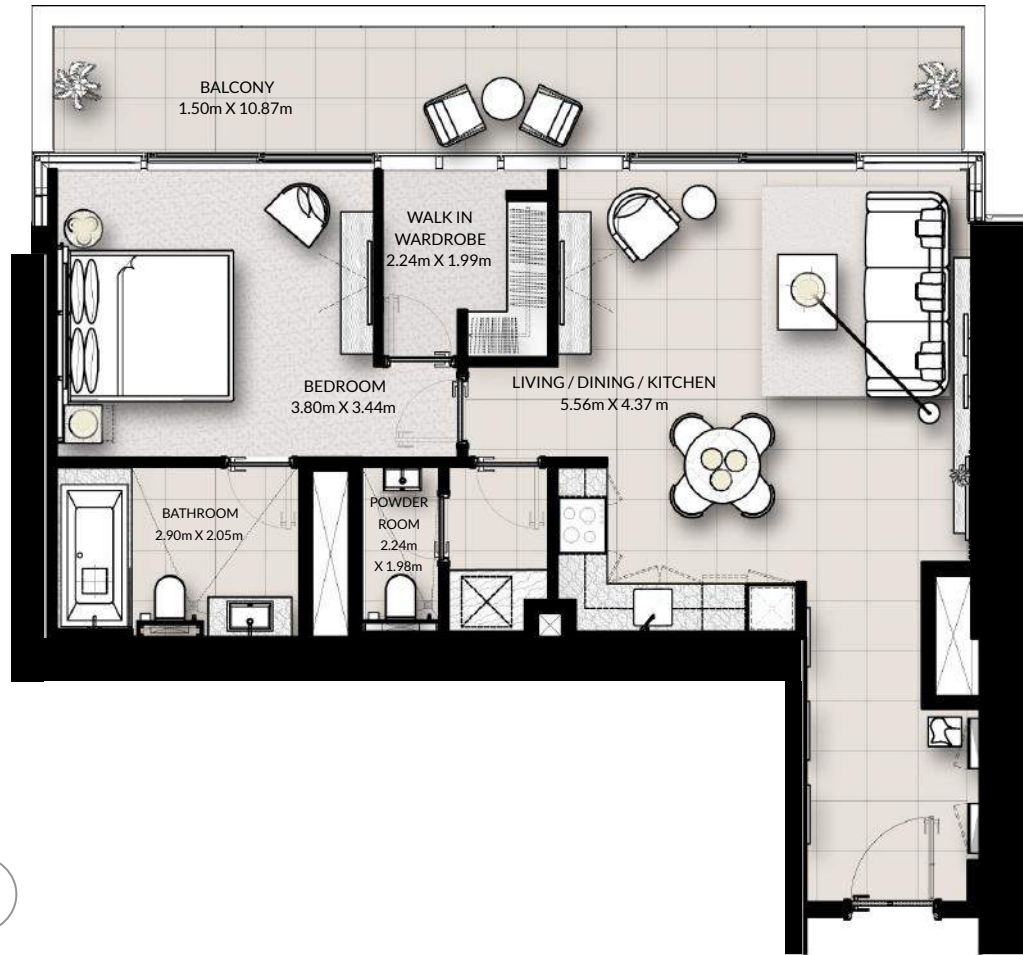




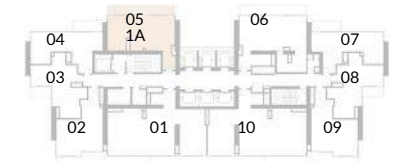


VIDA

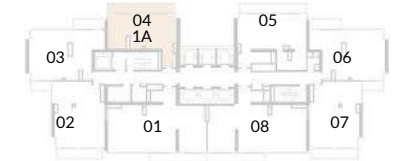
RESIDENCES
DUBAI MARINA



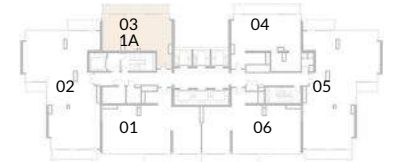
1 Bedroom Type A



FLOOR 14 - 24



FLOOR 26 - 48



FLOOR 49 - 54



MARINA VIEW

Floor	14-19	20-24	26-30	31-41	43-48	49-54
Unit Area	820.10 ft ² / 76.19 m ²	821.82 ft ² / 76.35 m ²	827.31 ft ² / 76.86 m ²	827.64 ft ² / 76.89 m ²	837.54 ft ² / 77.81 m ²	838.51 ft ² / 77.90 m ²
Balcony Area	178.79 ft ² / 16.61 m ²	178.79 ft ² / 16.61 m ²	178.68 ft ² / 16.60 m ²	178.68 ft ² / 16.60 m ²	178.68 ft ² / 16.60 m ²	178.79 ft ² / 16.61 m ²
Total Area	998.89 ft ² / 92.80 m ²	1000.61 ft ² / 92.96 m ²	1005.99 ft ² / 93.46 m ²	1006.32 ft ² / 93.49 m ²	1016.22 ft ² / 94.41 m ²	1017.30 ft ² / 94.51 m ²

Floor	14 - 24	Unit 05
Floor	26 - 48	Unit 04
Floor	49 - 54	Unit 03

1. All dimensions are in imperial and metric, and measured to structural elements and exclude wall finishes and construction tolerances. 2. All materials, dimensions, and drawings are approximate only. 3. Information is subject to change without notice, at developer's absolute discretion. 4. Actual area may vary from the stated area. 5. Drawings not to scale. 6. All images used are for illustrative purposes only and do not represent the actual size, features, specifications, fittings, and furnishings. 7. The developer reserves the right to make revisions/alterations, at its absolute discretion, without any liability whatsoever.