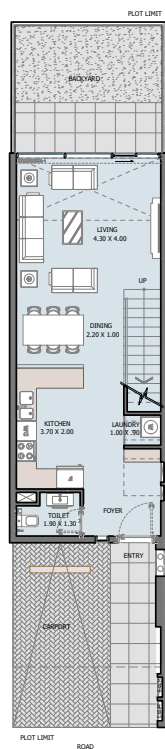


# UNIT TYPES

## TOWNHOUSES



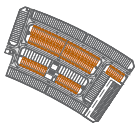
GROUND FLOOR



1ST FLOOR



ROOF FLOOR



### TOWNHOUSE 2B | Type A

Internal Area	1154.75 sq.ft
Outdoor Area	610.31 to 1067.02 sq.ft
<b>Total Area</b>	<b>1765.06 to 2221.77 sq.ft</b>

All change and dimensions are approximate. Changes are not to scale and are subject to change without notice. The developer reserves the right to make revisions. The units are measured at ground level in the building and column the way it also depending on the floor level. The landscaping and accessories shown are for representation only. The usability, length and width of the balcony varies depending on which floor and which orientation the unit is located within the building. There will be slight difference in the internal area between the same unit type depending on the shaft sizes that go through the units.

# UNIT TYPES

## TOWNHOUSES



# UNIT TYPES

## TOWNHOUSES



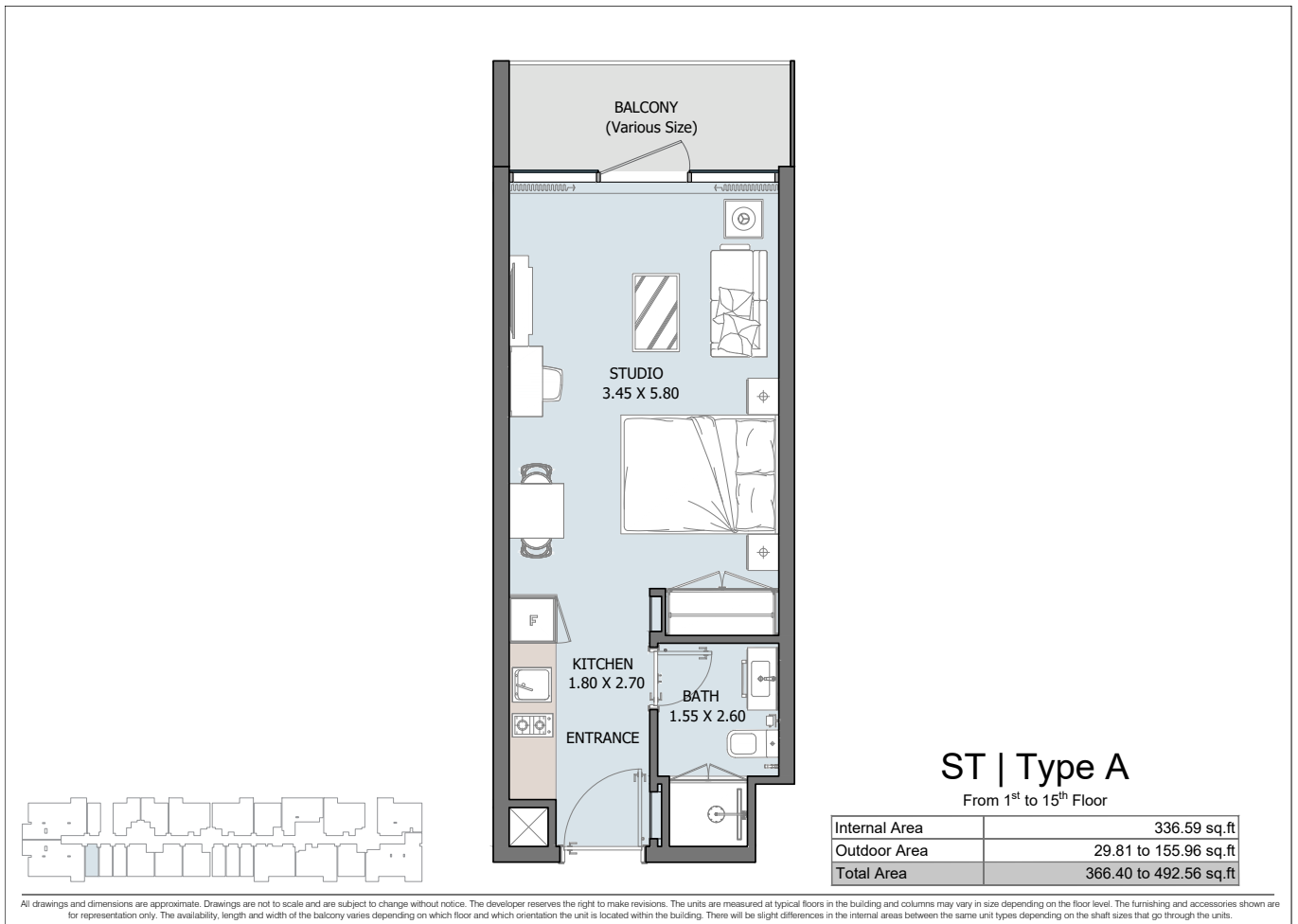
# UNIT TYPES

## TOWNHOUSES



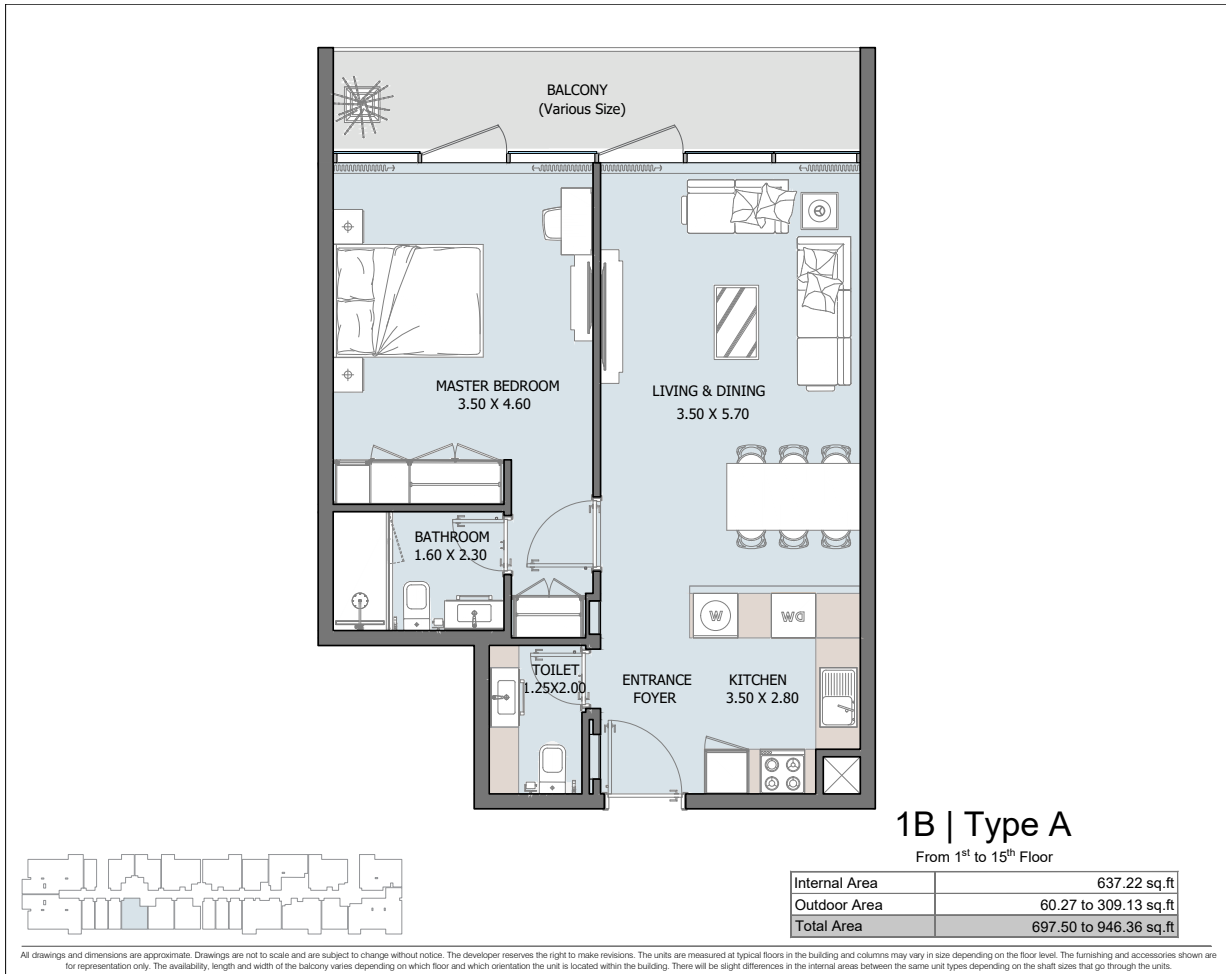
# UNIT TYPES

## RESIDENCE



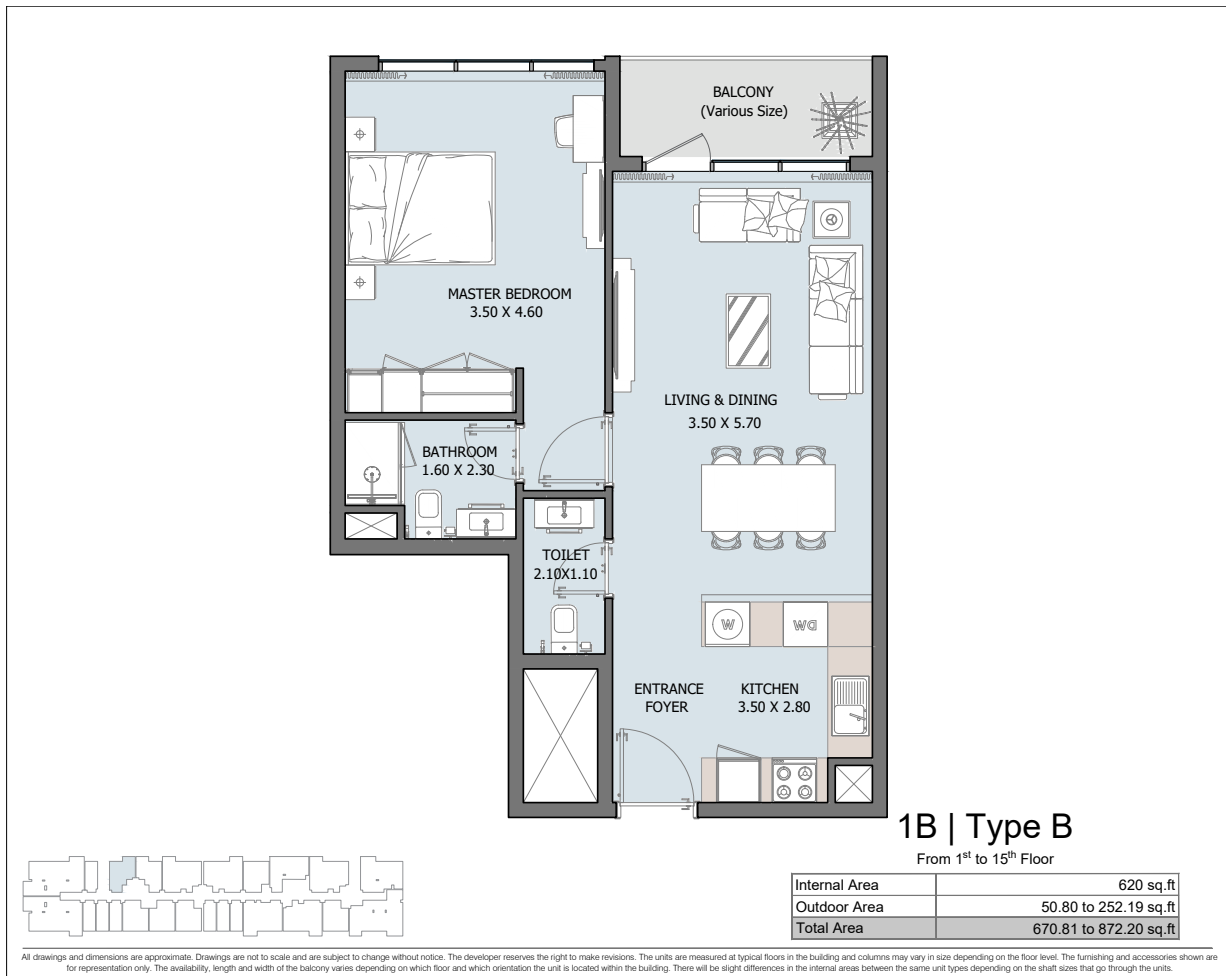
# UNIT TYPES

## RESIDENCE



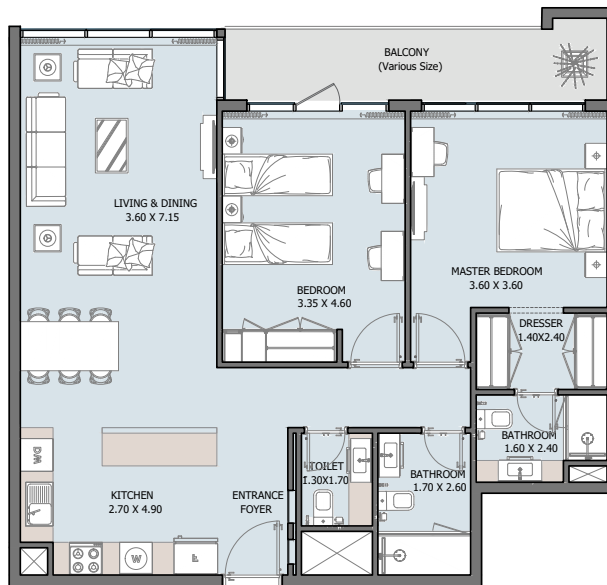
# UNIT TYPES

## RESIDENCE



# UNIT TYPES

## RESIDENCE



### 2B | Type A

From 1<sup>st</sup> to 15<sup>th</sup> Floor

Internal Area	1025.15 sq.ft
Outdoor Area	68.99 to 402.03 sq.ft
<b>Total Area</b>	<b>1094.15 to 1427.19 sq.ft</b>

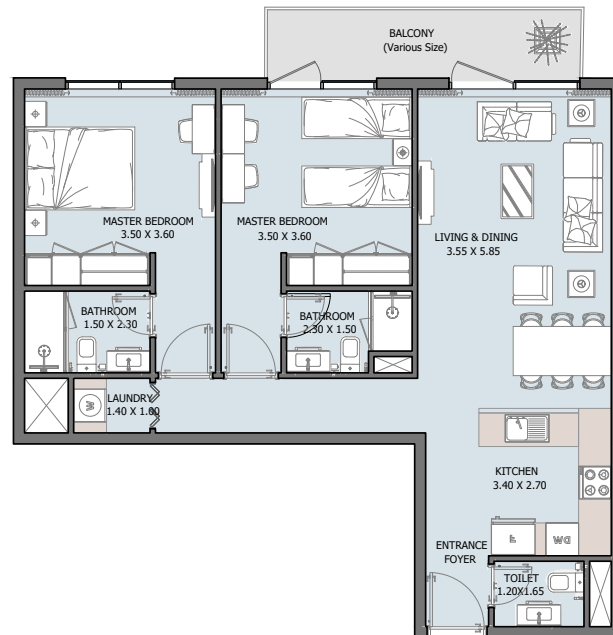


All drawings and dimensions are approximate. Drawings are not to scale and are subject to change without notice. The developer reserves the right to make revisions. The units are measured at typical floors in the building and columns may vary in size depending on the floor level. The furnishing and accessories shown are for representation only. The availability, length and width of the balcony varies depending on which floor and which orientation the unit is located within the building. There will be slight differences in the internal areas between the same unit types, depending on the shaft sizes that go through the units.



# UNIT TYPES

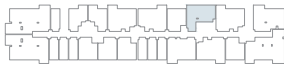
## RESIDENCE



### 2B | Type B

From 1<sup>st</sup> to 15<sup>th</sup> Floor

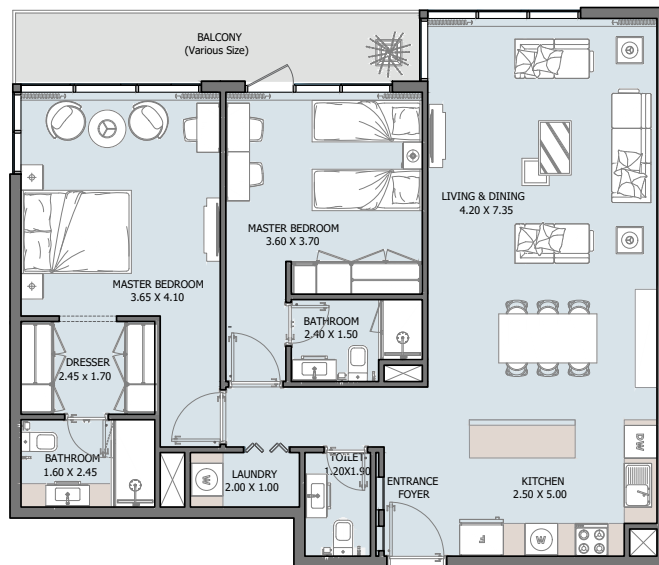
Internal Area	897.60 sq.ft
Outdoor Area	81.80 to 294.71 sq.ft
<b>Total Area</b>	<b>979.41 to 1192.32 sq.ft</b>



All drawings and dimensions are approximate. Drawings are not to scale and are subject to change without notice. The developer reserves the right to make revisions. The units are measured at typical floors in the building and columns may vary in size depending on the floor level. The furnishing and accessories shown are for representation only. The availability, length and width of the balcony varies depending on which floor and which orientation the unit is located within the building. There will be slight differences in the internal areas between the same unit types depending on the shaft sizes that go through the units.

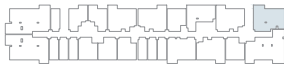
# UNIT TYPES

## RESIDENCE



### 2B | Type C

From 1<sup>st</sup> to 15<sup>th</sup> Floor

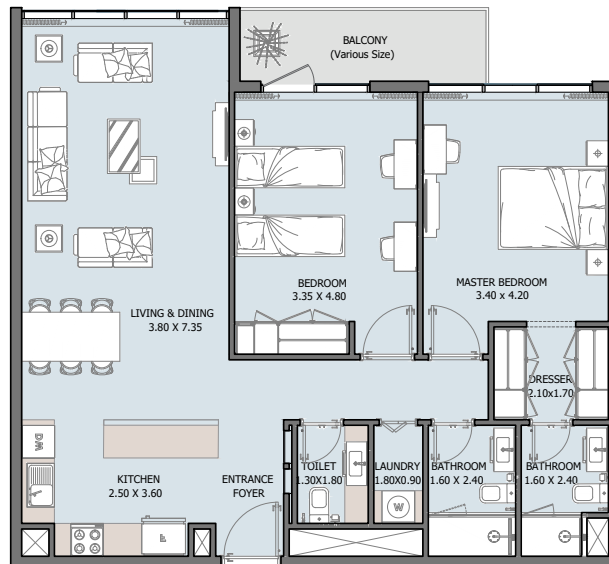


Internal Area	1132.36 sq.ft
Outdoor Area	108.93 to 433.24 sq.ft
<b>Total Area</b>	<b>1241.29 to 1565.61 sq.ft</b>

All drawings and dimensions are approximate. Drawings are not to scale and are subject to change without notice. The developer reserves the right to make revisions. The units are measured at typical floors in the building and columns may vary in size depending on the floor level. The furnishing and accessories shown are for representation only. The availability, length and width of the balcony varies depending on which floor and which orientation the unit is located within the building. There will be slight differences in the internal areas between the same unit types depending on the shaft sizes that go through the units.

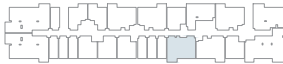
# UNIT TYPES

## RESIDENCE



### 2B | Type D

From 1<sup>st</sup> to 10<sup>th</sup> Floor



Internal Area	1066.59 sq.ft
Outdoor Area	66.06 to 318.61 sq.ft
<b>Total Area</b>	<b>1132.69 to 1385.21 sq.ft</b>

All drawings and dimensions are approximate. Drawings are not to scale and are subject to change without notice. The developer reserves the right to make revisions. The units are measured at typical floors in the building and columns may vary in size depending on the floor level. The furnishing and accessories shown are for representation only. The availability, length and width of the balcony varies depending on which floor and which orientation the unit is located within the building. There will be slight differences in the internal areas between the same unit types depending on the shaft sizes that go through the units.

# UNIT TYPES

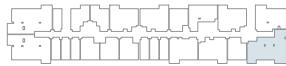
## RESIDENCE



### 3B | Type A

From 1<sup>st</sup> to 15<sup>th</sup> Floor

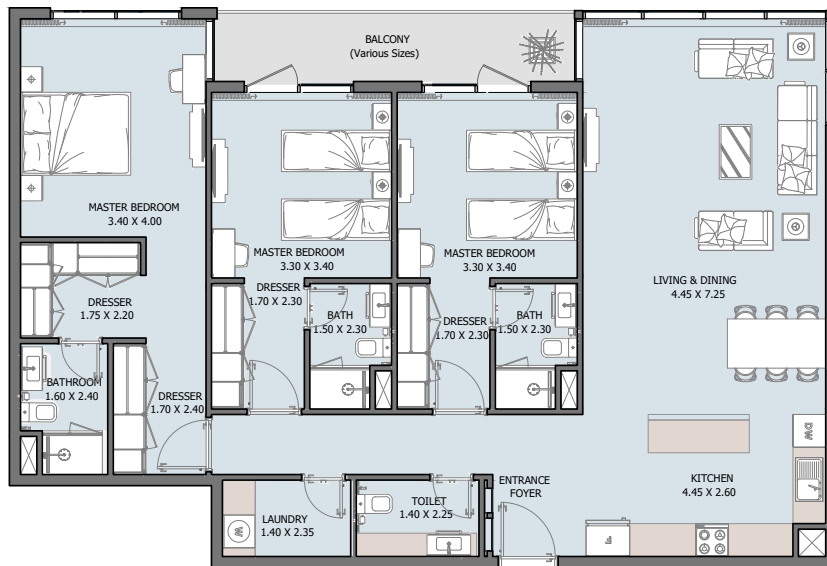
Internal Area	1621.80 sq.ft
Outdoor Area	95.79 to 400.30 sq.ft
<b>Total Area</b>	<b>1717.60 to 2022.11 sq.ft</b>



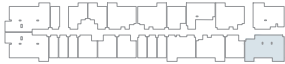
All drawings and dimensions are approximate. Drawings are not to scale and are subject to change without notice. The developer reserves the right to make revisions. The units are measured at typical floors in the building and columns may vary in size depending on the floor level. The furnishing and accessories shown are for representation only. The availability, length and width of the balcony varies depending on which floor and which orientation the unit is located within the building. There will be slight differences in the internal areas between the same unit types depending on the shaft sizes that go through the units.

# UNIT TYPES

## RESIDENCE



**3B | Type B**  
9<sup>th</sup> Floor

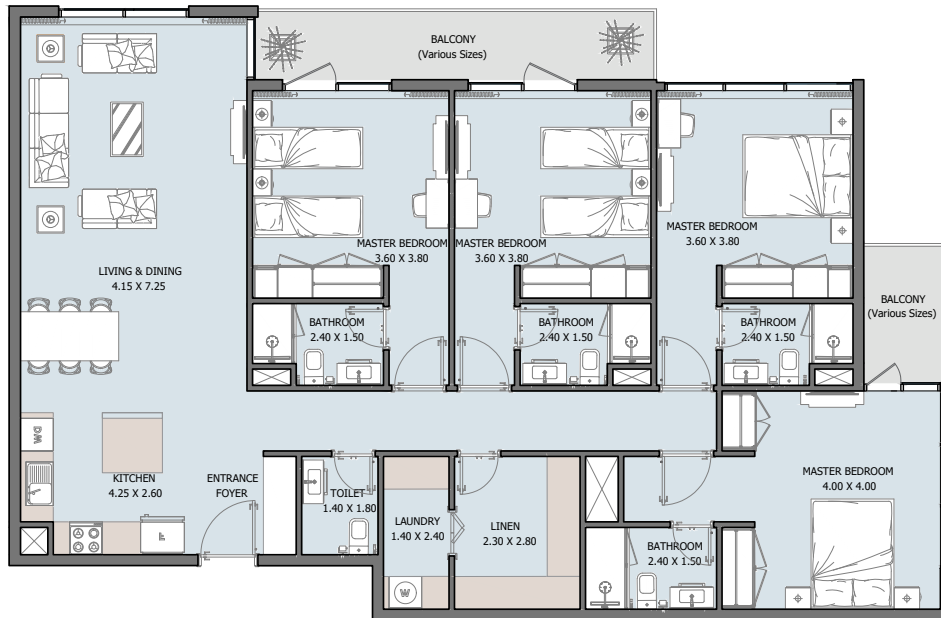


Internal Area	1473.15 sq.ft
Outdoor Area	95.79 sq.ft
<b>Total Area</b>	<b>1568.95 sq.ft</b>

All drawings and dimensions are approximate. Drawings are not to scale and are subject to change without notice. The developer reserves the right to make revisions. The units are measured at typical floors in the building and columns may vary in size depending on the floor level. The furnishing and accessories shown are for representation only. The availability, length and width of the balcony varies depending on which floor and which orientation the unit is located within the building. There will be slight differences in the internal areas between the same unit types depending on the shaft sizes that go through the units.

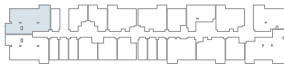
# UNIT TYPES

## RESIDENCE



### 4B | Type A

From 1<sup>st</sup> to 15<sup>th</sup> Floor

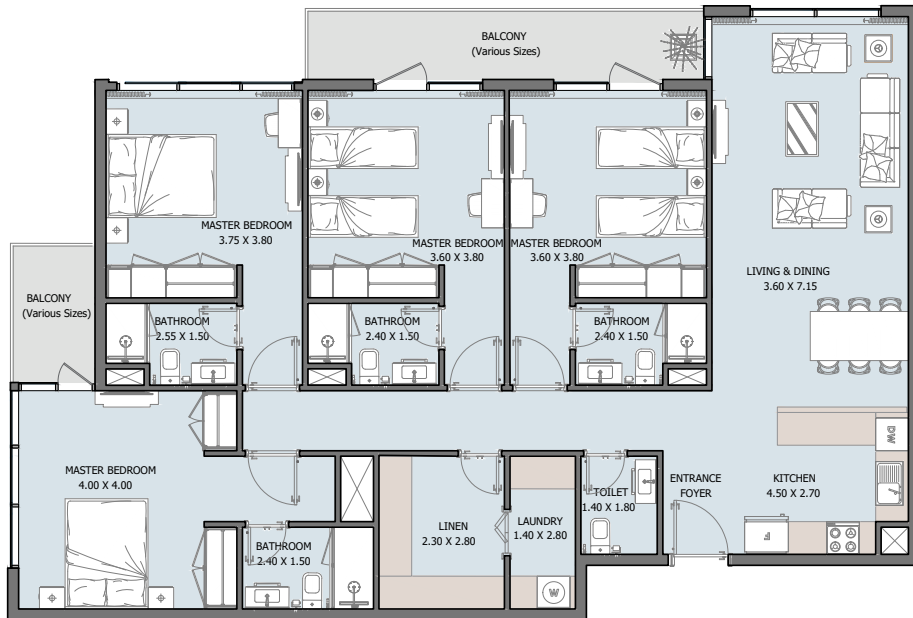


Internal Area	1679.17 sq.ft
Outdoor Area	148.43 to 1068.74 sq.ft
<b>Total Area</b>	<b>1827.60 to 2747.92 sq.ft</b>

All drawings and dimensions are approximate. Drawings are not to scale and are subject to change without notice. The developer reserves the right to make revisions. The units are measured at typical floors in the building and columns may vary in size depending on the floor level. The furnishing and accessories shown are for representation only. The availability, length and width of the balcony varies depending on which floor and which orientation the unit is located within the building. There will be slight differences in the internal areas between the same unit types, depending on the shaft sizes that go through the units.

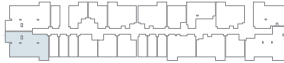
# UNIT TYPES

## RESIDENCE



### 4B | Type B

From 1<sup>st</sup> to 15<sup>th</sup> Floor



Internal Area	1618.35 sq.ft
Outdoor Area	150.47 to 580.71 sq.ft
<b>Total Area</b>	<b>1768.83 to 2199.06 sq.ft</b>

All drawings and dimensions are approximate. Drawings are not to scale and are subject to change without notice. The developer reserves the right to make revisions. The units are measured at typical floors in the building and columns may vary in size depending on the floor level. The furnishing and accessories shown are for representation only. The availability, length and width of the balcony varies depending on which floor and which orientation the unit is located within the building. There will be slight differences in the internal areas between the same unit types depending on the shaft sizes that go through the units.



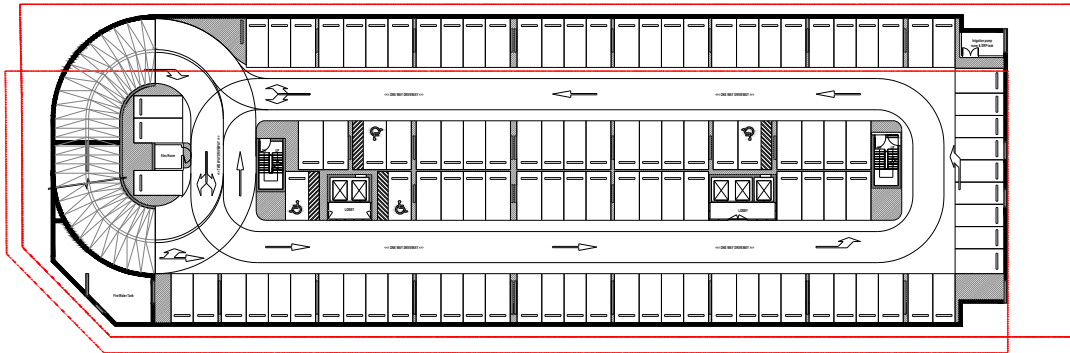
VERDANA

# FLOOR PLANS

## VERDANA-

### BASEMENT 01

○ 31B ○ 1B ○ 2B ○ 3B ○ 4B

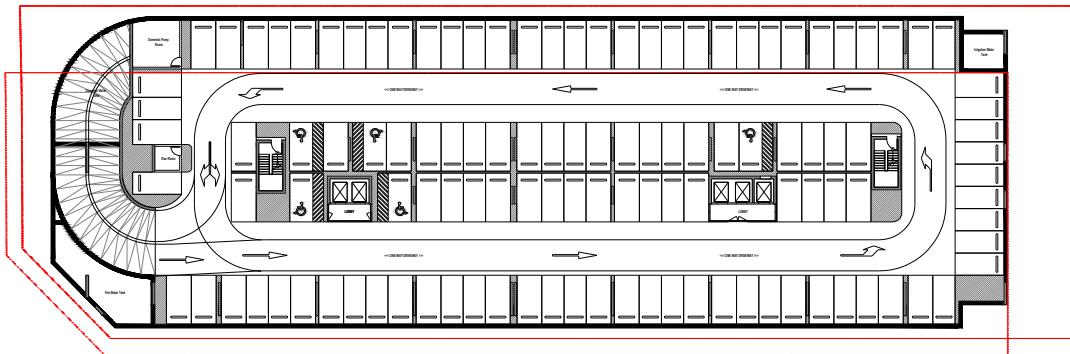


Parking No. 113

## VERDANA-

### BASEMENT 02

○ 31B ○ 1B ○ 2B ○ 3B ○ 4B



Parking No. 118







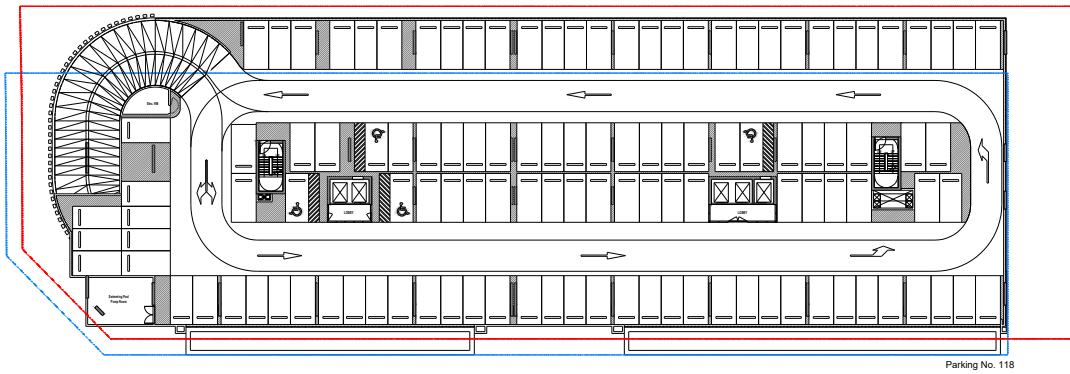
VERDANA

# FLOOR PLANS

## VERDANA-

### PODIUM 01

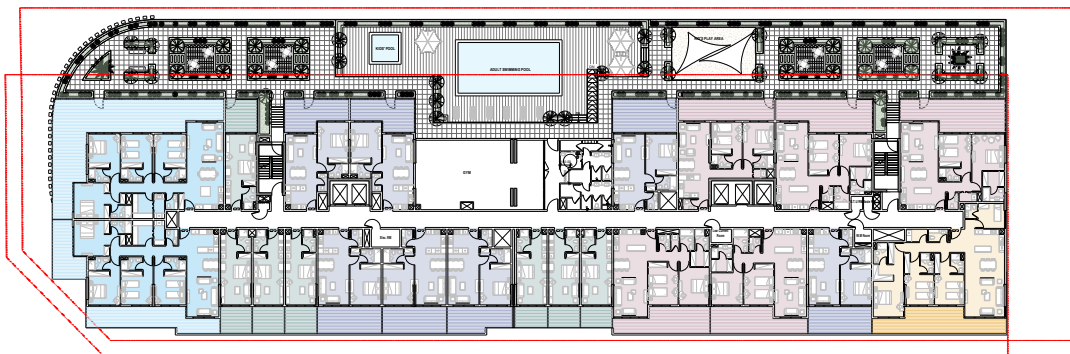
○ 11B ○ 1B ○ 2B ○ 3B ○ 4B



## VERDANA-

### FIRST FLOOR

○ 11B ○ 1B ○ 2B ○ 3B ○ 4B





VERDANA

# FLOOR PLANS

## VERDANA-

### SECOND FLOOR

○ 31B ○ 1B ○ 2B ○ 3B ○ 4B



## VERDANA-

### TYPICAL 3<sup>RD</sup> TO 10<sup>TH</sup>

○ 31B ○ 1B ○ 2B ○ 3B ○ 4B





VERDANA

# FLOOR PLANS

## VERDANA-

### 9<sup>TH</sup>FLOOR

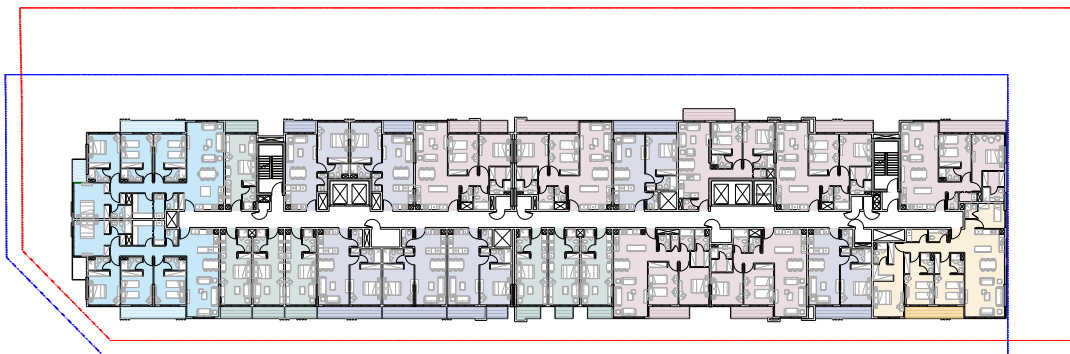
○ 31B ○ 1B ○ 2B ○ 3B ○ 4B



## VERDANA-

### TYPICAL 11<sup>TH</sup> TO 15<sup>TH</sup>

○ 31B ○ 1B ○ 2B ○ 3B ○ 4B





VERDANA

# FLOOR PLANS

## VERDANA-

### ROOF FLOOR

○ 1B ○ 1B ○ 2B ○ 3B ○ 4B

