



# UNIT LAYOUTS



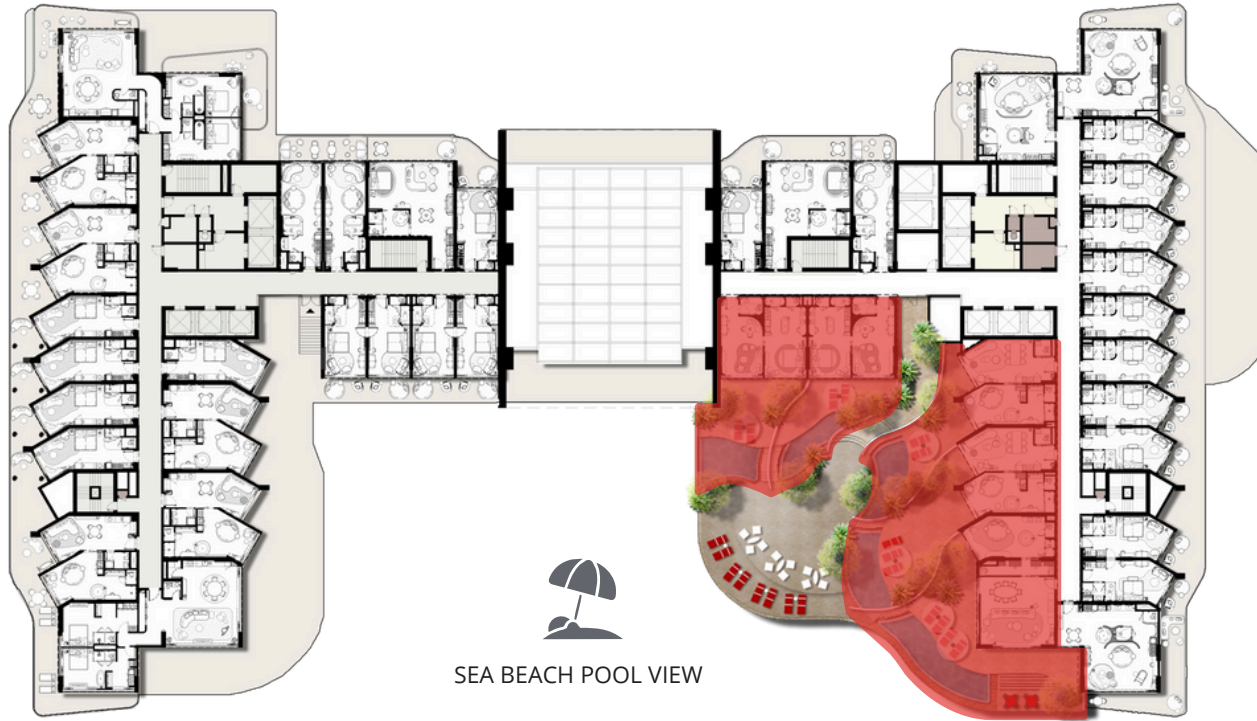
**A +**

## **CATEGORY**

Exclusive one-bedroom units located on the first floor with a private pool, offering stunning views of the sea and beach club, all interconnected with a VIP viewing deck.



**A+**  
**VIP CATEGORY PLAN.**  
**FIRST FLOOR.**



  
SEA BEACH POOL VIEW

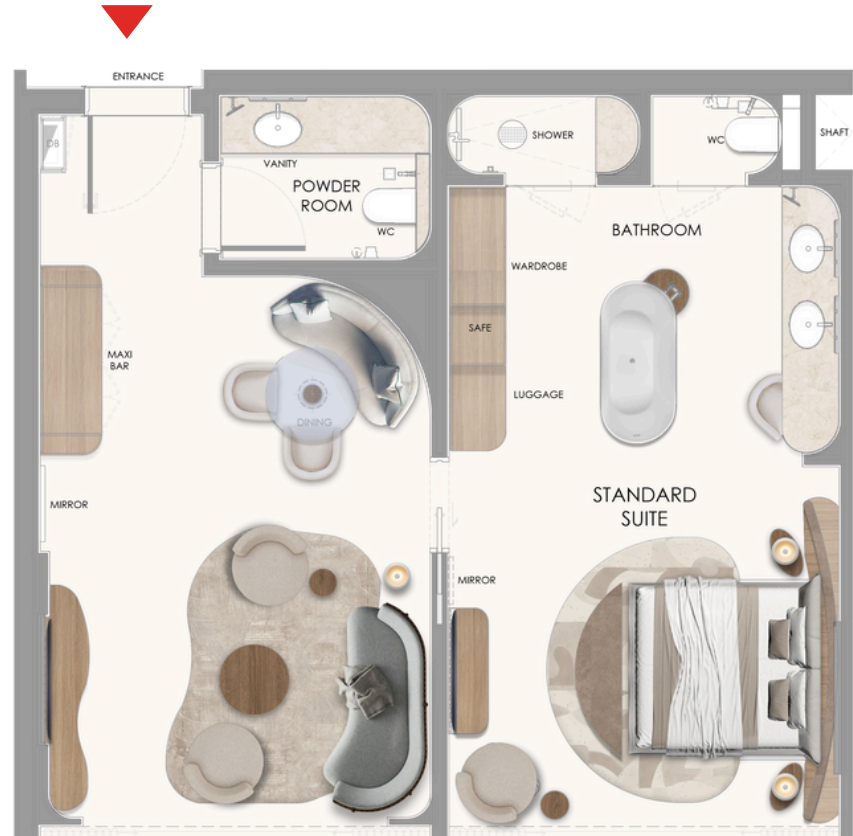
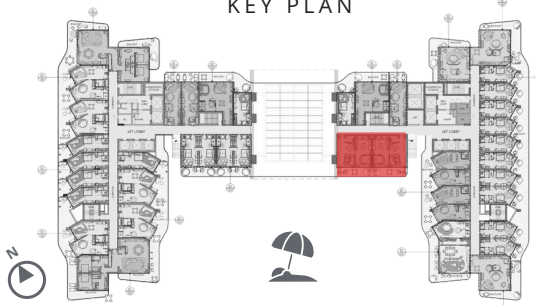
Disclaimer: 1. The ROI figures provided are based on actual assumptions and market trends, and may not reflect future outcomes. Buyers are advised to conduct their own research and seek professional advice before making investment decisions. We do not guarantee the accuracy of projected ROI and disclaim any liability for potential losses. 2. All dimensions are in imperial and metric and measured from finish to finish excluding construction tolerances. 3. All materials, dimensions, and drawings are approximate only. 4. Information is subject to change without notice, at the developer's absolute discretion. 5. Actual area may vary from the stated area. 6. All images used are for illustrative purposes only and do not represent the actual size, features, specifications, fittings, and furnishings. 7. The developer reserves the right to make alterations, without any liability whatsoever.



## HOTEL VIP SUITE

ROOM AREA	742.710 SQ.FT.	69.0 SQ.M.
BALCONY AREA	893.405 SQ.FT.	83.0 SQ.M.
TOTAL AREA	1636.110 SQ.FT.	152.0 SQ.M.

### KEY PLAN



Disclaimer: 1. The ROI figures provided are based on actual assumptions and market trends, and may not reflect future outcomes. Buyers are advised to conduct their own research and seek professional advice before making investment decisions. We do not guarantee the accuracy of projected ROI and disclaim any liability for potential losses. 2. All dimensions are in imperial and metric and measured from finish to finish excluding construction tolerances. 3. All materials, dimensions, and drawings are approximate only. 4. Information is subject to change without notice, at the developer's absolute discretion. 5. Actual area may vary from the stated area. 6. All images used are for illustrative purposes only and do not represent the actual size, features, specifications, fittings, and furnishings. 7. The developer reserves the right to make alterations, without any liability whatsoever.

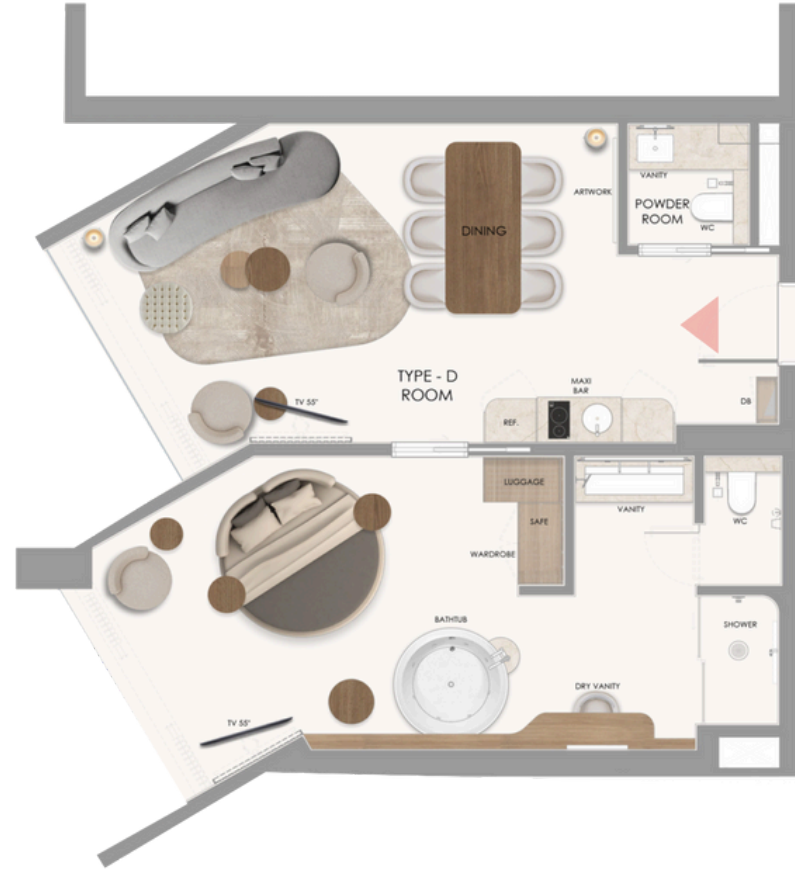
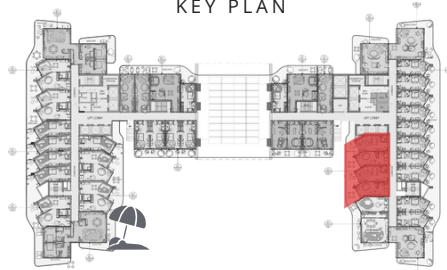




## HOTEL VIP SUITE

ROOM AREA	785.765 SQ.FT.	73.0 SQ.M.
BALCONY AREA	1186.182 SQ.FT.	110.2 SQ.M.
TOTAL AREA	1971.948 SQ.FT.	183.2 SQ.M.

KEY PLAN

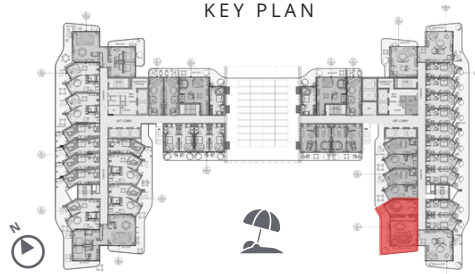


Disclaimer: 1. The ROI figures provided are based on actual assumptions and market trends, and may not reflect future outcomes. Buyers are advised to conduct their own research and seek professional advice before making investment decisions. We do not guarantee the accuracy of projected ROI and disclaim any liability for potential losses. 2. All dimensions are in imperial and metric and measured from finish to finish excluding construction tolerances. 3. All materials, dimensions, and drawings are approximate only. 4. Information is subject to change without notice, at the developer's absolute discretion. 5. Actual area may vary from the stated area. 6. All images used are for illustrative purposes only and do not represent the actual size, features, specifications, fittings, and furnishings. 7. The developer reserves the right to make alterations, without any liability whatsoever.



## HOTEL VIP SUITE

ROOM AREA	1097.920 SQ.FT.	102.0 SQ.M.
BALCONY AREA	1683.475 SQ.FT.	156.4 SQ.M.
TOTAL AREA	2.781.394 SQ.FT.	258.4 SQ.M.



Disclaimer: 1. The ROI figures provided are based on actual assumptions and market trends, and may not reflect future outcomes. Buyers are advised to conduct their own research and seek professional advice before making investment decisions. We do not guarantee the accuracy of projected ROI and disclaim any liability for potential losses. 2. All dimensions are in imperial and metric and measured from finish to finish excluding construction tolerances. 3. All materials, dimensions, and drawings are approximate only. 4. Information is subject to change without notice, at the developer's absolute discretion. 5. Actual area may vary from the stated area. 6. All images used are for illustrative purposes only and do not represent the actual size, features, specifications, fittings, and furnishings. 7. The developer reserves the right to make alterations, without any liability whatsoever.



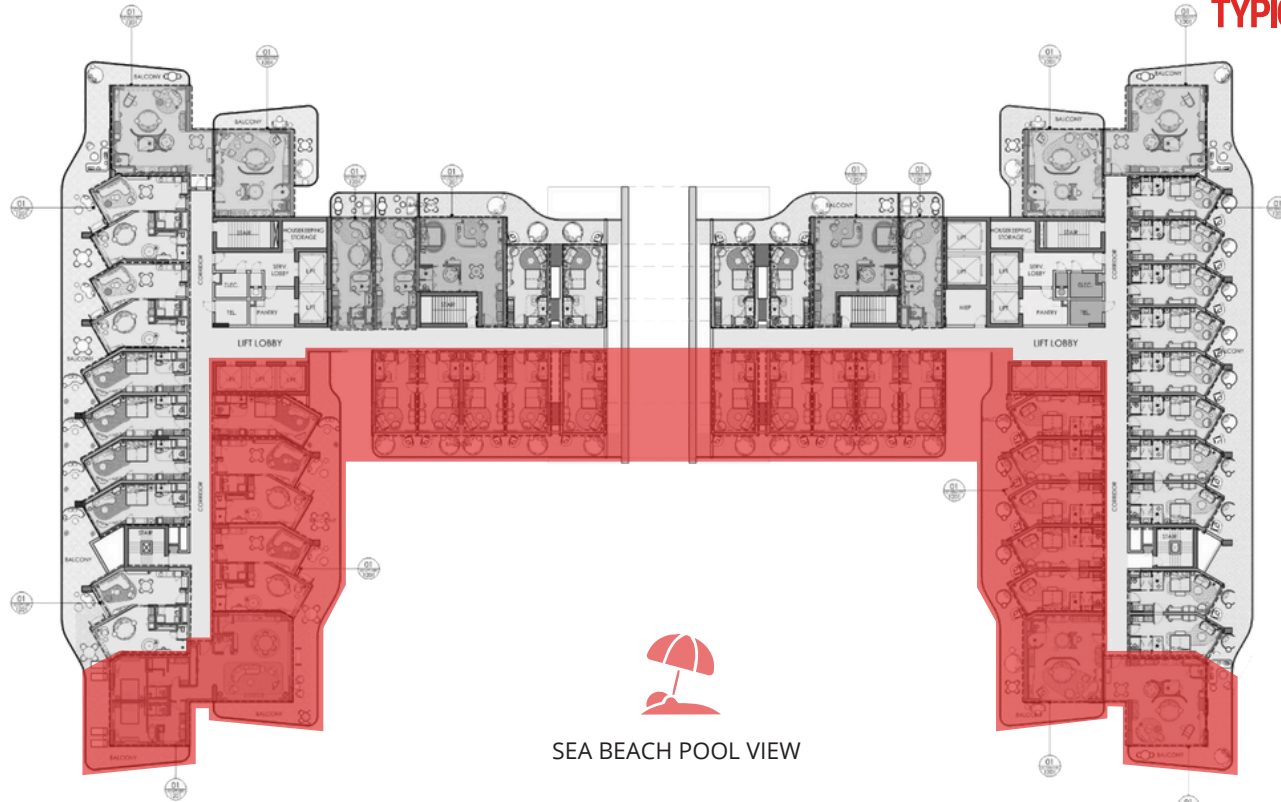
# A

## CATEGORY

Experience stunning ocean and beach club views from our one-bedroom units with interconnected rooms for seamless convenience.



# A TYPICAL CATEGORY PLAN. 2-7 FLOOR.



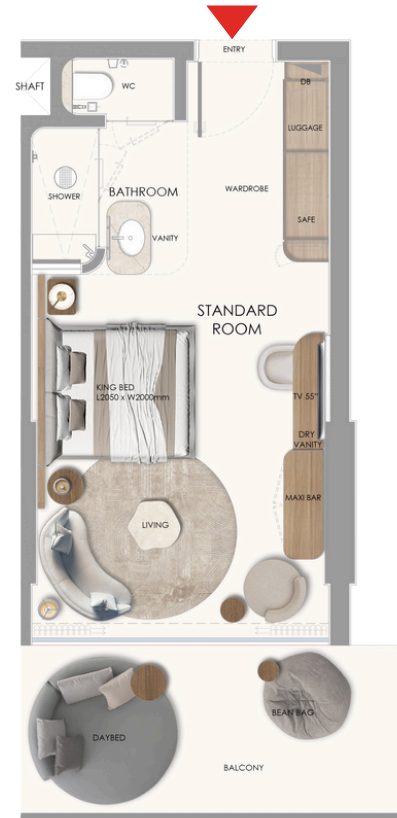
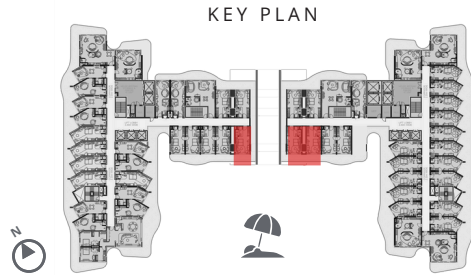
SEA BEACH POOL VIEW

Disclaimer: 1. The ROI figures provided are based on actual assumptions and market trends, and may not reflect future outcomes. Buyers are advised to conduct their own research and seek professional advice before making investment decisions. We do not guarantee the accuracy of projected ROI and disclaim any liability for potential losses. 2. All dimensions are in imperial and metric and measured from finish to finish excluding construction tolerances. 3. All materials, dimensions, and drawings are approximate only. 4. Information is subject to change without notice, at the developer's absolute discretion. 5. Actual area may vary from the stated area. 6. All images used are for illustrative purposes only and do not represent the actual size, features, specifications, fittings, and furnishings. 7. The developer reserves the right to make alterations, without any liability whatsoever.



## HOTEL STANDARD ROOM

ROOM AREA	365.973 SQ.FT.	34.0 SQ.M.
BALCONY AREA	93.646 SQ.FT.	8.7 SQ.M.
TOTAL AREA	459.619 SQ.FT.	42.7 SQ.M.

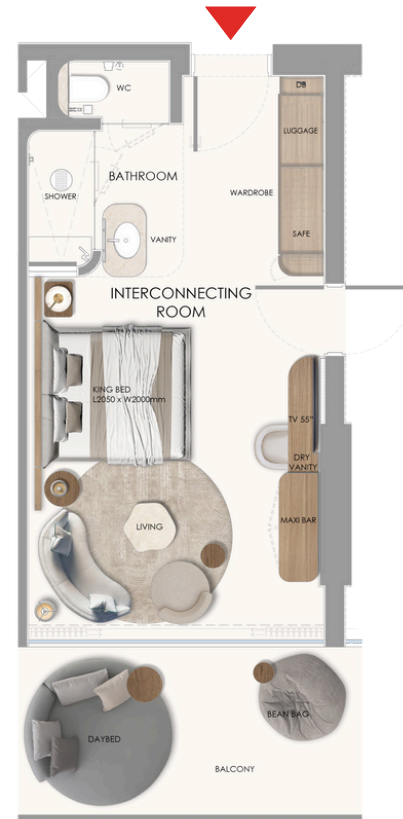
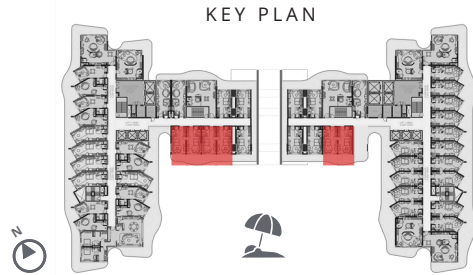


Disclaimer: 1. The ROI figures provided are based on actual assumptions and market trends, and may not reflect future outcomes. Buyers are advised to conduct their own research and seek professional advice before making investment decisions. We do not guarantee the accuracy of projected ROI and disclaim any liability for potential losses. 2. All dimensions are in imperial and metric and measured from finish to finish excluding construction tolerances. 3. All materials, dimensions, and drawings are approximate only. 4. Information is subject to change without notice, at the developer's absolute discretion. 5. Actual area may vary from the stated area. 6. All images used are for illustrative purposes only and do not represent the actual size, features, specifications, fittings, and furnishings. 7. The developer reserves the right to make alterations, without any liability whatsoever.



## HOTEL STANDARD ROOM

ROOM AREA	365.973 SQ.FT.	34.0 SQ.M.
BALCONY AREA	93.646 SQ.FT.	8.7 SQ.M.
TOTAL AREA	459.619 SQ.FT.	42.7 SQ.M.



Disclaimer: 1. The ROI figures provided are based on actual assumptions and market trends, and may not reflect future outcomes. Buyers are advised to conduct their own research and seek professional advice before making investment decisions. We do not guarantee the accuracy of projected ROI and disclaim any liability for potential losses. 2. All dimensions are in imperial and metric and measured from finish to finish excluding construction tolerances. 3. All materials, dimensions, and drawings are approximate only. 4. Information is subject to change without notice, at the developer's absolute discretion. 5. Actual area may vary from the stated area. 6. All images used are for illustrative purposes only and do not represent the actual size, features, specifications, fittings, and furnishings. 7. The developer reserves the right to make alterations, without any liability whatsoever.



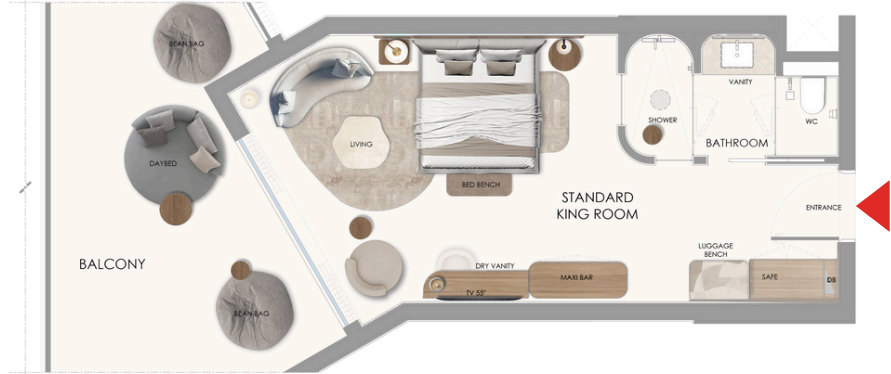
## HOTEL STANDARD ROOM

ROOM AREA	387.501 SQ.FT.	36.0 SQ.M.
BALCONY AREA	210.972 SQ.FT.	19.6 SQ.M.
TOTAL AREA	598.473 SQ.FT.	55.6 SQ.M.

KEY PLAN



OPTION 1



OPTION 2



Disclaimer: 1. The ROI figures provided are based on actual assumptions and market trends, and may not reflect future outcomes. Buyers are advised to conduct their own research and seek professional advice before making investment decisions. We do not guarantee the accuracy of projected ROI and disclaim any liability for potential losses. 2. All dimensions are in imperial and metric and measured from finish to finish excluding construction tolerances. 3. All materials, dimensions, and drawings are approximate only. 4. Information is subject to change without notice, at the developer's absolute discretion. 5. Actual area may vary from the stated area. 6. All images used are for illustrative purposes only and do not represent the actual size, features, specifications, fittings, and furnishings. 7. The developer reserves the right to make alterations, without any liability whatsoever.

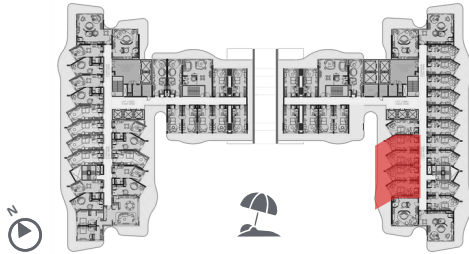




## HOTEL STANDARD ROOM

ROOM AREA	387.501 SQ.FT.	36.0 SQ.M.
BALCONY AREA	158.229 SQ.FT.	14.7 SQ.M.
TOTAL AREA	545.730 SQ.FT.	50.7 SQ.M.

KEY PLAN



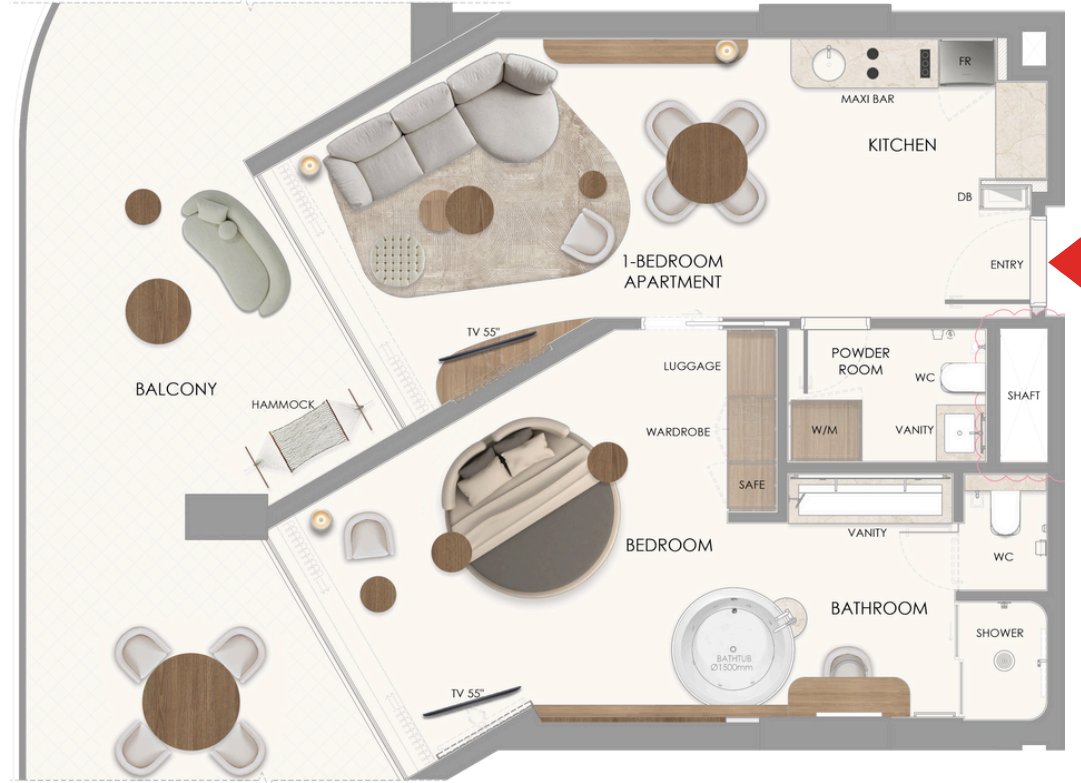
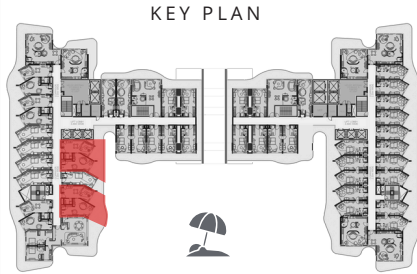
Disclaimer: 1. The ROI figures provided are based on actual assumptions and market trends, and may not reflect future outcomes. Buyers are advised to conduct their own research and seek professional advice before making investment decisions. We do not guarantee the accuracy of projected ROI and disclaim any liability for potential losses. 2. All dimensions are in imperial and metric and measured from finish to finish excluding construction tolerances. 3. All materials, dimensions, and drawings are approximate only. 4. Information is subject to change without notice, at the developer's absolute discretion. 5. Actual area may vary from the stated area. 6. All images used are for illustrative purposes only and do not represent the actual size, features, specifications, fittings, and furnishings. 7. The developer reserves the right to make alterations, without any liability whatsoever.





APARMENT  
1 BEDROOM APARTMENT

ROOM AREA	775.002 SQ.FT.	72.0 SQ.M.
BALCONY AREA	863.265 SQ.FT.	80.2 SQ.M.
TOTAL AREA	1638.267 SQ.FT.	152.2 SQ.M.

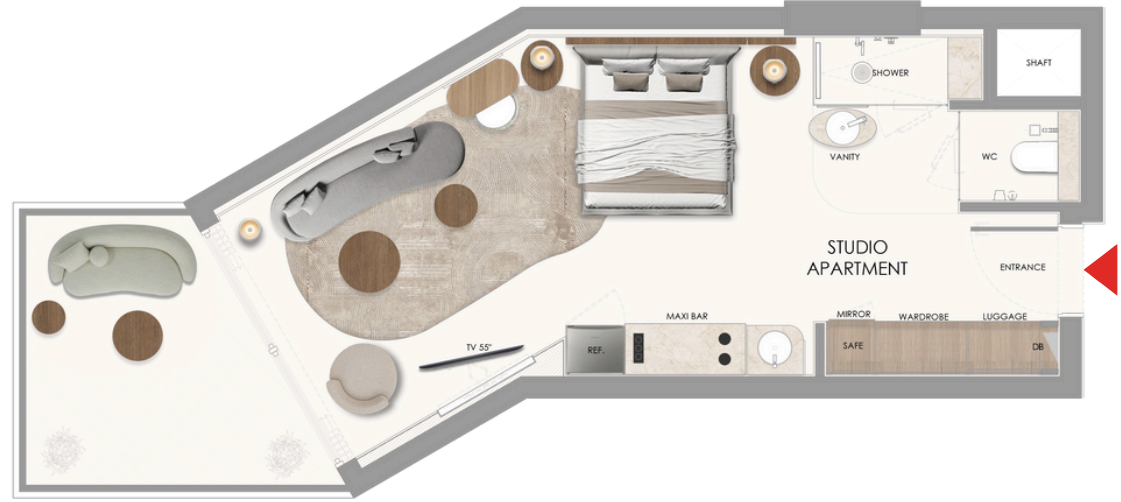
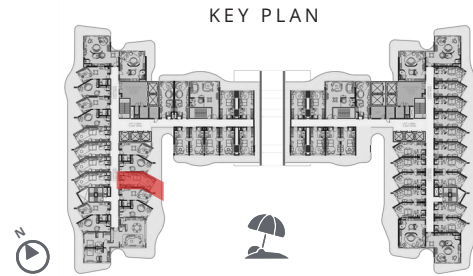


Disclaimer: 1. The ROI figures provided are based on actual assumptions and market trends, and may not reflect future outcomes. Buyers are advised to conduct their own research and seek professional advice before making investment decisions. We do not guarantee the accuracy of projected ROI and disclaim any liability for potential losses. 2. All dimensions are in imperial and metric and measured from finish to finish excluding construction tolerances. 3. All materials, dimensions, and drawings are approximate only. 4. Information is subject to change without notice, at the developer's absolute discretion. 5. Actual area may vary from the stated area. 6. All images used are for illustrative purposes only and do not represent the actual size, features, specifications, fittings, and furnishings. 7. The developer reserves the right to make alterations, without any liability whatsoever.



## APARMENT STUDIO APARTMENT

ROOM AREA	430.556 SQ.FT.	40.0 SQ.M.
BALCONY AREA	384.271 SQ.FT.	35.7 SQ.M.
TOTAL AREA	814.828 SQ.FT.	75.7 SQ.M.

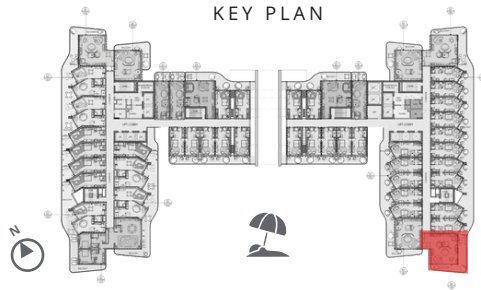


Disclaimer: 1. The ROI figures provided are based on actual assumptions and market trends, and may not reflect future outcomes. Buyers are advised to conduct their own research and seek professional advice before making investment decisions. We do not guarantee the accuracy of projected ROI and disclaim any liability for potential losses. 2. All dimensions are in imperial and metric and measured from finish to finish excluding construction tolerances. 3. All materials, dimensions, and drawings are approximate only. 4. Information is subject to change without notice, at the developer's absolute discretion. 5. Actual area may vary from the stated area. 6. All images used are for illustrative purposes only and do not represent the actual size, features, specifications, fittings, and furnishings. 7. The developer reserves the right to make alterations, without any liability whatsoever.



## HOTEL SUITE

ROOM AREA	818.057 SQ.FT.	76.0 SQ.M.
BALCONY AREA	490.834 SQ.FT.	45.6 SQ.M.
TOTAL AREA	1308.891 SQ.FT.	121.6 SQ.M.



## OPTION 2

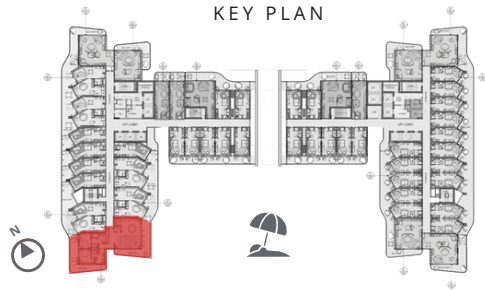


Disclaimer: 1. The ROI figures provided are based on actual assumptions and market trends, and may not reflect future outcomes. Buyers are advised to conduct their own research and seek professional advice before making investment decisions. We do not guarantee the accuracy of projected ROI and disclaim any liability for potential losses. 2. All dimensions are in imperial and metric and measured from finish to finish excluding construction tolerances. 3. All materials, dimensions, and drawings are approximate only. 4. Information is subject to change without notice, at the developer's absolute discretion. 5. Actual area may vary from the stated area. 6. All images used are for illustrative purposes only and do not represent the actual size, features, specifications, fittings, and furnishings. 7. The developer reserves the right to make alterations, without any liability whatsoever.



## APARTMENT 2 BEDROOM APARTMENT

ROOM AREA	1571.530 SQ.FT.	146.0 SQ.M.
BALCONY AREA	973.0575 SQ.FT.	90.4 SQ.M.
TOTAL AREA	2544.5884 SQ.FT.	236.4 SQ.M.



Disclaimer: 1. The ROI figures provided are based on actual assumptions and market trends, and may not reflect future outcomes. Buyers are advised to conduct their own research and seek professional advice before making investment decisions. We do not guarantee the accuracy of projected ROI and disclaim any liability for potential losses. 2. All dimensions are in imperial and metric and measured from finish to finish excluding construction tolerances. 3. All materials, dimensions, and drawings are approximate only. 4. Information is subject to change without notice, at the developer's absolute discretion. 5. Actual area may vary from the stated area. 6. All images used are for illustrative purposes only and do not represent the actual size, features, specifications, fittings, and furnishings. 7. The developer reserves the right to make alterations, without any liability whatsoever.



# B

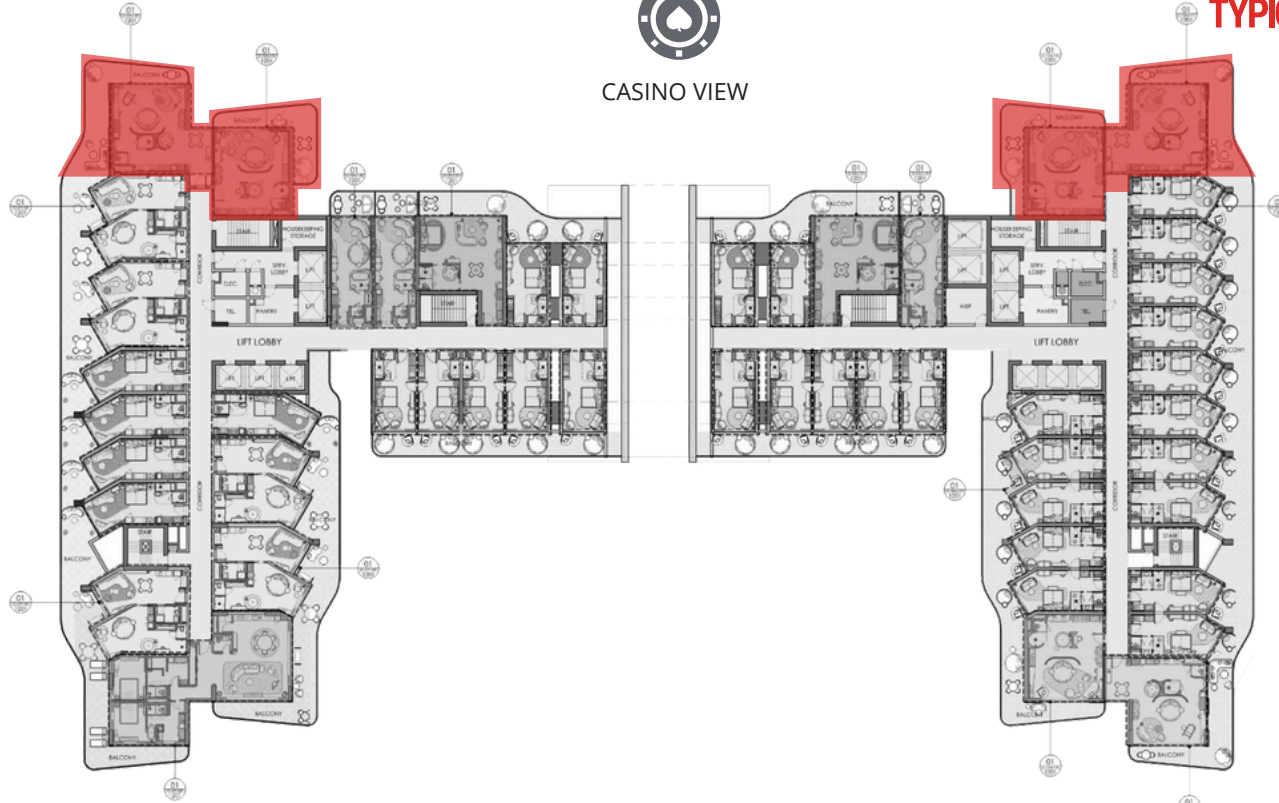
## CATEGORY

Embrace luxury with our exclusive corner units boasting views of the upcoming integrated gaming resort. Choose from our range of 1-2BR residential units and hotel suites



CASINO VIEW

**B**  
**TYPICAL CATEGORY PLAN.**  
**1-7 FLOOR.**



Disclaimer: 1. The ROI figures provided are based on actual assumptions and market trends, and may not reflect future outcomes. Buyers are advised to conduct their own research and seek professional advice before making investment decisions. We do not guarantee the accuracy of projected ROI and disclaim any liability for potential losses. 2. All dimensions are in imperial and metric and measured from finish to finish excluding construction tolerances. 3. All materials, dimensions, and drawings are approximate only. 4. Information is subject to change without notice, at the developer's absolute discretion. 5. Actual area may vary from the stated area. 6. All images used are for illustrative purposes only and do not represent the actual size, features, specifications, fittings, and furnishings. 7. The developer reserves the right to make alterations, without any liability whatsoever.

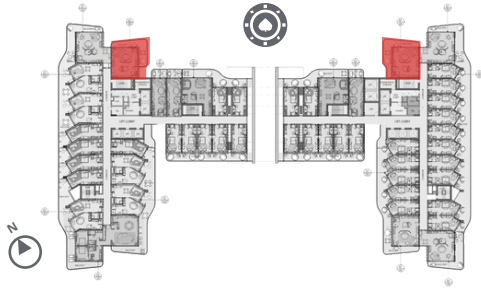




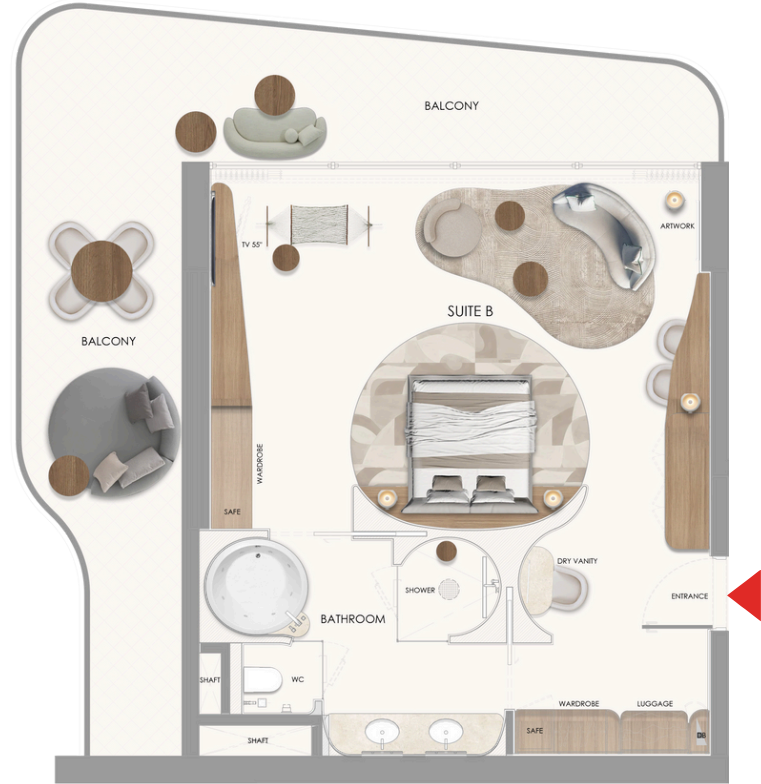
## HOTEL SUITE

ROOM AREA	721.182 SQ.FT.	67.0 SQ.M.
BALCONY AREA	495.140 SQ.FT.	46.0 SQ.M.
TOTAL AREA	1216.320 SQ.FT.	113.0 SQ.M.

### KEY PLAN



### OPTION 2



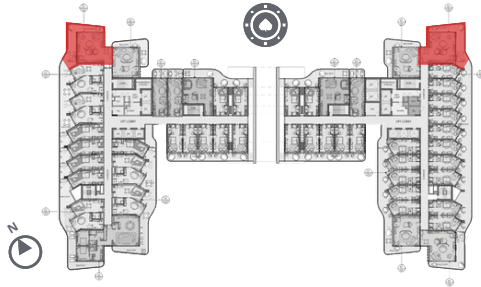
Disclaimer: 1. The ROI figures provided are based on actual assumptions and market trends, and may not reflect future outcomes. Buyers are advised to conduct their own research and seek professional advice before making investment decisions. We do not guarantee the accuracy of projected ROI and disclaim any liability for potential losses. 2. All dimensions are in imperial and metric and measured from finish to finish excluding construction tolerances. 3. All materials, dimensions, and drawings are approximate only. 4. Information is subject to change without notice, at the developer's absolute discretion. 5. Actual area may vary from the stated area. 6. All images used are for illustrative purposes only and do not represent the actual size, features, specifications, fittings, and furnishings. 7. The developer reserves the right to make alterations, without any liability whatsoever.



## HOTEL SUITE

ROOM AREA	818.057 SQ.FT.	76.0 SQ.M.
BALCONY AREA	570.487 SQ.FT.	53.0 SQ.M.
TOTAL AREA	1388.540 SQ.FT.	129.0 SQ.M.

### KEY PLAN



### OPTION 2



Disclaimer: 1. The ROI figures provided are based on actual assumptions and market trends, and may not reflect future outcomes. Buyers are advised to conduct their own research and seek professional advice before making investment decisions. We do not guarantee the accuracy of projected ROI and disclaim any liability for potential losses. 2. All dimensions are in imperial and metric and measured from finish to finish excluding construction tolerances. 3. All materials, dimensions, and drawings are approximate only. 4. Information is subject to change without notice, at the developer's absolute discretion. 5. Actual area may vary from the stated area. 6. All images used are for illustrative purposes only and do not represent the actual size, features, specifications, fittings, and furnishings. 7. The developer reserves the right to make alterations, without any liability whatsoever.





# C

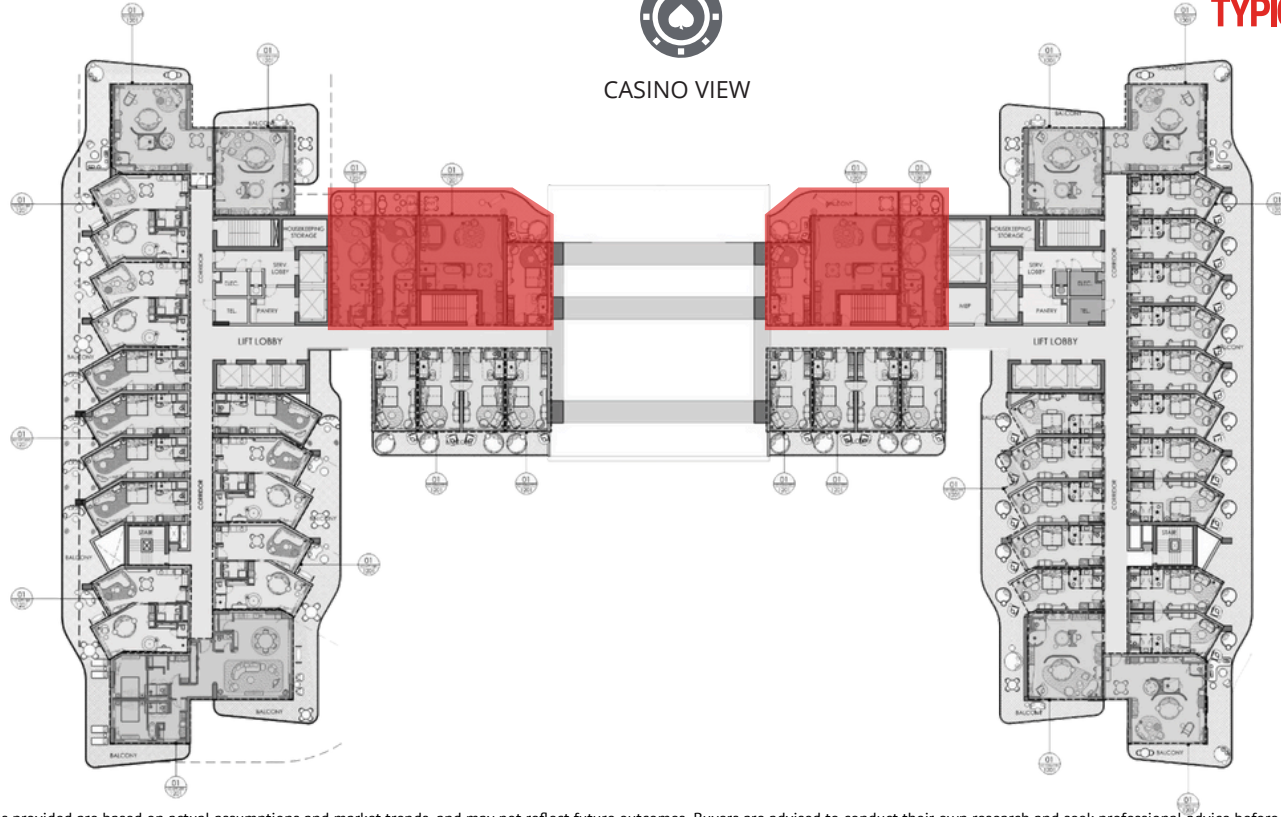
## **CATEGORY**

Standard Rooms and Junior Suites offering captivating views of the forthcoming integrated gaming resort.



CASINO VIEW

**C**  
**TYPICAL CATEGORY PLAN.**  
**1- 4 FLOOR.**

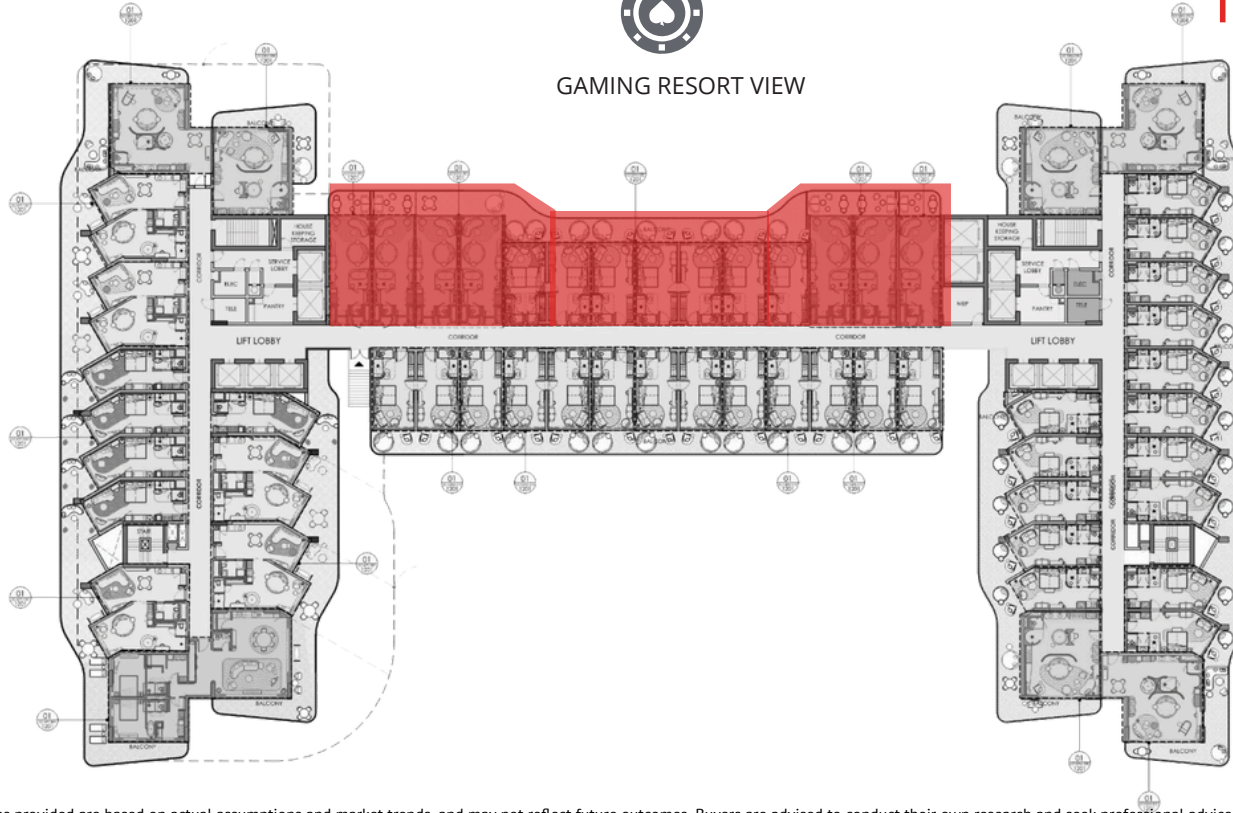


Disclaimer: 1. The ROI figures provided are based on actual assumptions and market trends, and may not reflect future outcomes. Buyers are advised to conduct their own research and seek professional advice before making investment decisions. We do not guarantee the accuracy of projected ROI and disclaim any liability for potential losses. 2. All dimensions are in imperial and metric and measured from finish to finish excluding construction tolerances. 3. All materials, dimensions, and drawings are approximate only. 4. Information is subject to change without notice, at the developer's absolute discretion. 5. Actual area may vary from the stated area. 6. All images used are for illustrative purposes only and do not represent the actual size, features, specifications, fittings, and furnishings. 7. The developer reserves the right to make alterations, without any liability whatsoever.



GAMING RESORT VIEW

**C**  
**TYPICAL CATEGORY PLAN.**  
**5-8 FLOOR.**



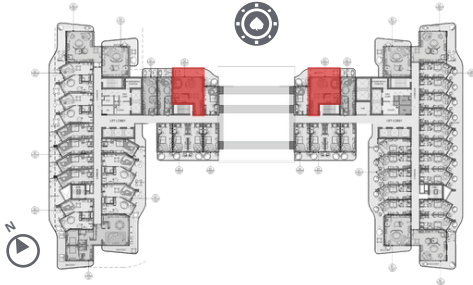
Disclaimer: 1. The ROI figures provided are based on actual assumptions and market trends, and may not reflect future outcomes. Buyers are advised to conduct their own research and seek professional advice before making investment decisions. We do not guarantee the accuracy of projected ROI and disclaim any liability for potential losses. 2. All dimensions are in imperial and metric and measured from finish to finish excluding construction tolerances. 3. All materials, dimensions, and drawings are approximate only. 4. Information is subject to change without notice, at the developer's absolute discretion. 5. Actual area may vary from the stated area. 6. All images used are for illustrative purposes only and do not represent the actual size, features, specifications, fittings, and furnishings. 7. The developer reserves the right to make alterations, without any liability whatsoever.



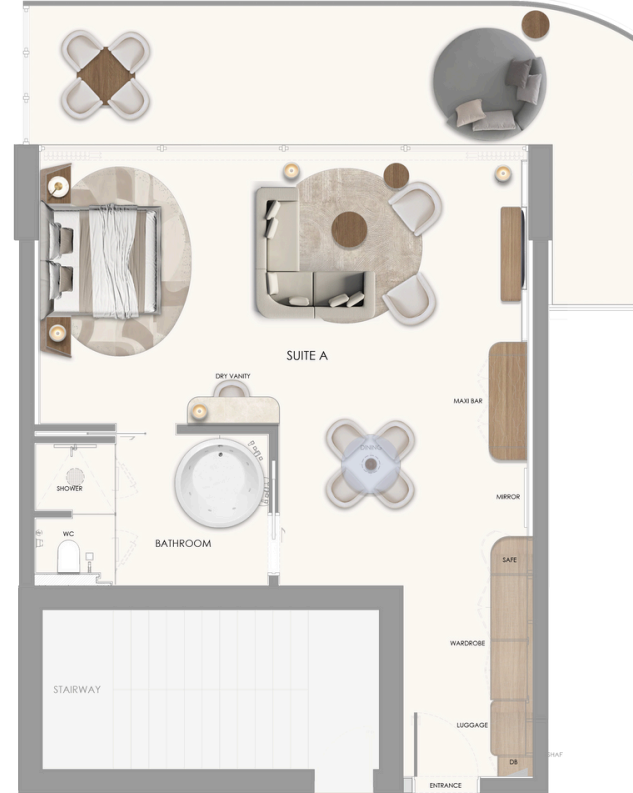
## HOTEL SUITE

ROOM AREA	775.002 SQ.FT.	72.0 SQ.M.
BALCONY AREA	230.347 SQ.FT.	21.4 SQ.M.
TOTAL AREA	1005.349 SQ.FT.	93.4 SQ.M.

### KEY PLAN



### OPTION 1



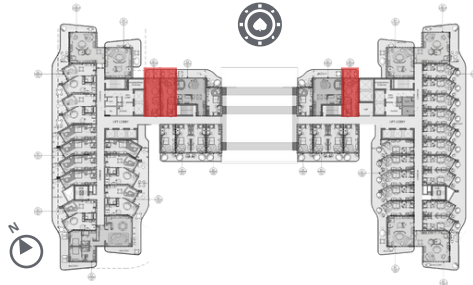
Disclaimer: 1. The ROI figures provided are based on actual assumptions and market trends, and may not reflect future outcomes. Buyers are advised to conduct their own research and seek professional advice before making investment decisions. We do not guarantee the accuracy of projected ROI and disclaim any liability for potential losses. 2. All dimensions are in imperial and metric and measured from finish to finish excluding construction tolerances. 3. All materials, dimensions, and drawings are approximate only. 4. Information is subject to change without notice, at the developer's absolute discretion. 5. Actual area may vary from the stated area. 6. All images used are for illustrative purposes only and do not represent the actual size, features, specifications, fittings, and furnishings. 7. The developer reserves the right to make alterations, without any liability whatsoever.



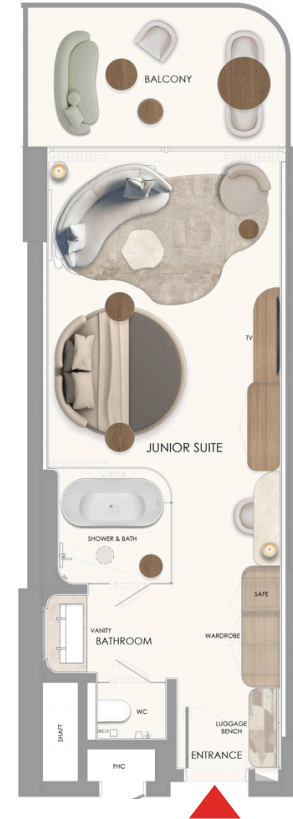
## APARMENT JUNIOR SUITE

ROOM AREA	484.376 SQ.FT.	45.0 SQ.M.
BALCONY AREA	81.805 SQ.FT.	7.6 SQ.M.
TOTAL AREA	566.181 SQ.FT.	52.6 SQ.M.

### KEY PLAN



### OPTION 1



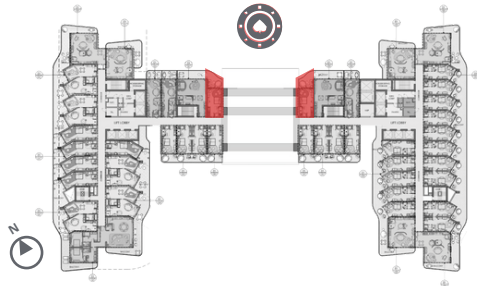
Disclaimer: 1. The ROI figures provided are based on actual assumptions and market trends, and may not reflect future outcomes. Buyers are advised to conduct their own research and seek professional advice before making investment decisions. We do not guarantee the accuracy of projected ROI and disclaim any liability for potential losses. 2. All dimensions are in imperial and metric and measured from finish to finish excluding construction tolerances. 3. All materials, dimensions, and drawings are approximate only. 4. Information is subject to change without notice, at the developer's absolute discretion. 5. Actual area may vary from the stated area. 6. All images used are for illustrative purposes only and do not represent the actual size, features, specifications, fittings, and furnishings. 7. The developer reserves the right to make alterations, without any liability whatsoever.



## HOTEL STANDARD ROOM

ROOM AREA	365.973	SQ.FT.	34.0	SQ.M.
BALCONY AREA	127.014	SQ.FT.	11.8	SQ.M.
TOTAL AREA	492.987	SQ.FT.	45.8	SQ.M.

KEY PLAN



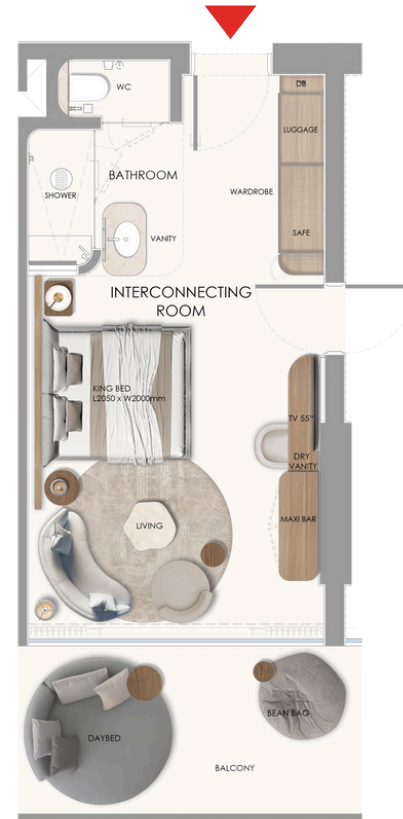
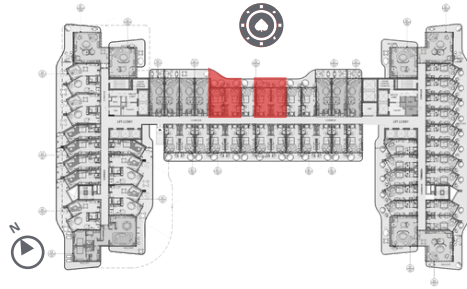
Disclaimer: 1. The ROI figures provided are based on actual assumptions and market trends, and may not reflect future outcomes. Buyers are advised to conduct their own research and seek professional advice before making investment decisions. We do not guarantee the accuracy of projected ROI and disclaim any liability for potential losses. 2. All dimensions are in imperial and metric and measured from finish to finish excluding construction tolerances. 3. All materials, dimensions, and drawings are approximate only. 4. Information is subject to change without notice, at the developer's absolute discretion. 5. Actual area may vary from the stated area. 6. All images used are for illustrative purposes only and do not represent the actual size, features, specifications, fittings, and furnishings. 7. The developer reserves the right to make alterations, without any liability whatsoever.



## HOTEL STANDARD ROOM

ROOM AREA	365.973 SQ.FT.	34.0 SQ.M.
BALCONY AREA	118.403 SQ.FT.	11.0 SQ.M.
TOTAL AREA	484.376 SQ.FT.	45.0 SQ.M.

KEY PLAN



Disclaimer: 1. The ROI figures provided are based on actual assumptions and market trends, and may not reflect future outcomes. Buyers are advised to conduct their own research and seek professional advice before making investment decisions. We do not guarantee the accuracy of projected ROI and disclaim any liability for potential losses. 2. All dimensions are in imperial and metric and measured from finish to finish excluding construction tolerances. 3. All materials, dimensions, and drawings are approximate only. 4. Information is subject to change without notice, at the developer's absolute discretion. 5. Actual area may vary from the stated area. 6. All images used are for illustrative purposes only and do not represent the actual size, features, specifications, fittings, and furnishings. 7. The developer reserves the right to make alterations, without any liability whatsoever.



**D**

## **CATEGORY**

Discover the charm of our hotel and residential units, each graced with a partial sea view, adding a touch of seaside serenity to your experience.

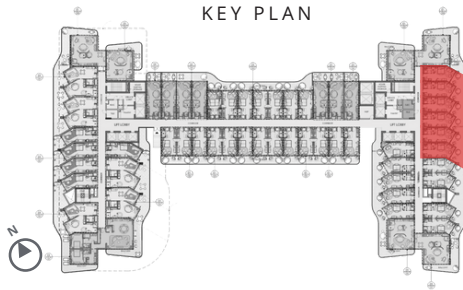




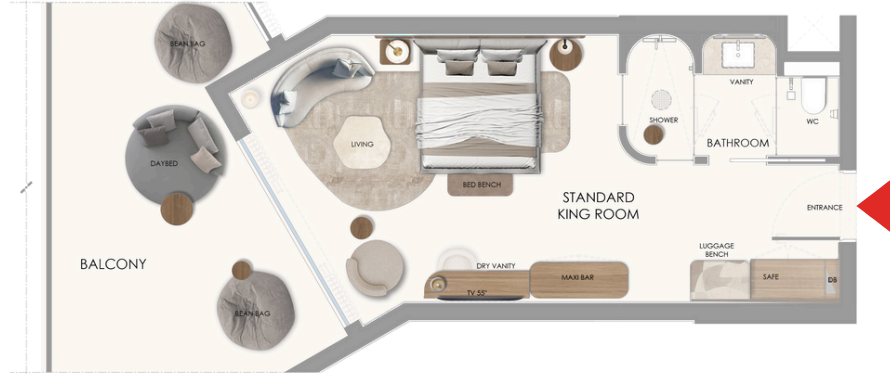


## HOTEL STANDARD ROOM

ROOM AREA	387.501 SQ.FT.	36.0 SQ.M.
BALCONY AREA	182.986 SQ.FT.	17.0 SQ.M.
TOTAL AREA	570.487 SQ.FT.	53.0 SQ.M.



OPTION 1



OPTION 2

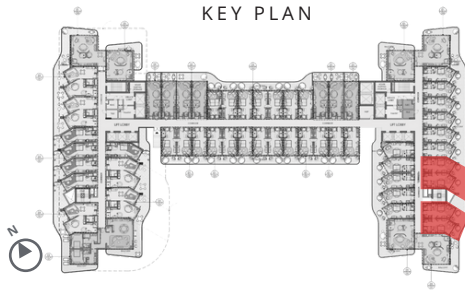


Disclaimer: 1. The ROI figures provided are based on actual assumptions and market trends, and may not reflect future outcomes. Buyers are advised to conduct their own research and seek professional advice before making investment decisions. We do not guarantee the accuracy of projected ROI and disclaim any liability for potential losses. 2. All dimensions are in imperial and metric and measured from finish to finish excluding construction tolerances. 3. All materials, dimensions, and drawings are approximate only. 4. Information is subject to change without notice, at the developer's absolute discretion. 5. Actual area may vary from the stated area. 6. All images used are for illustrative purposes only and do not represent the actual size, features, specifications, fittings, and furnishings. 7. The developer reserves the right to make alterations, without any liability whatsoever.



## HOTEL STANDARD ROOM

ROOM AREA	387.501 SQ.FT.	36.0 SQ.M.
BALCONY AREA	167.917 SQ.FT.	15.6 SQ.M.
TOTAL AREA	555.417 SQ.FT.	51.6 SQ.M.

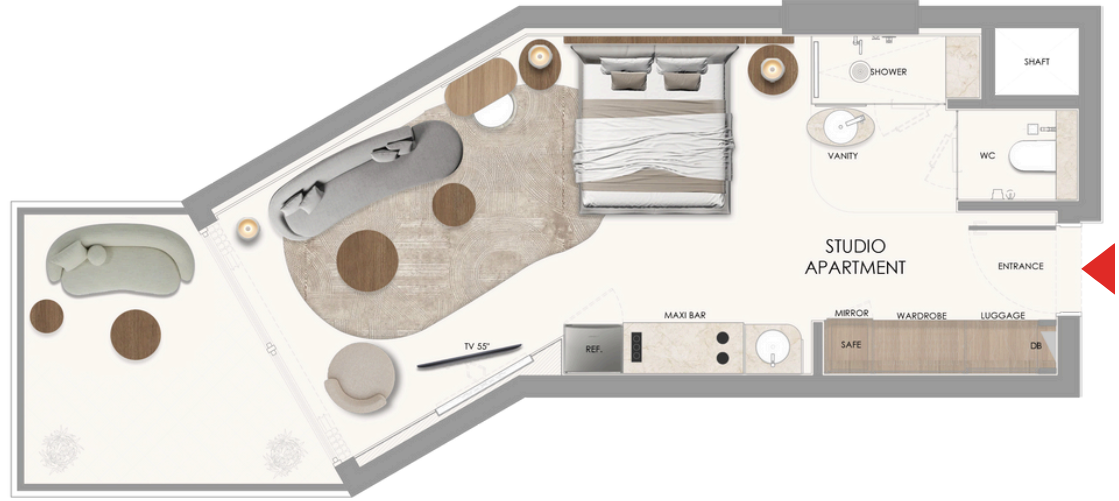
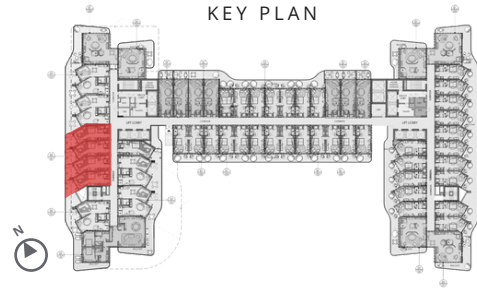


Disclaimer: 1. The ROI figures provided are based on actual assumptions and market trends, and may not reflect future outcomes. Buyers are advised to conduct their own research and seek professional advice before making investment decisions. We do not guarantee the accuracy of projected ROI and disclaim any liability for potential losses. 2. All dimensions are in imperial and metric and measured from finish to finish excluding construction tolerances. 3. All materials, dimensions, and drawings are approximate only. 4. Information is subject to change without notice, at the developer's absolute discretion. 5. Actual area may vary from the stated area. 6. All images used are for illustrative purposes only and do not represent the actual size, features, specifications, fittings, and furnishings. 7. The developer reserves the right to make alterations, without any liability whatsoever.



## APARMENT STUDIO APARTMENT

ROOM AREA	430.556 SQ.FT.	40.0 SQ.M.
BALCONY AREA	121.632 SQ.FT.	11.3 SQ.M.
TOTAL AREA	552.188 SQ.FT.	51.3 SQ.M.

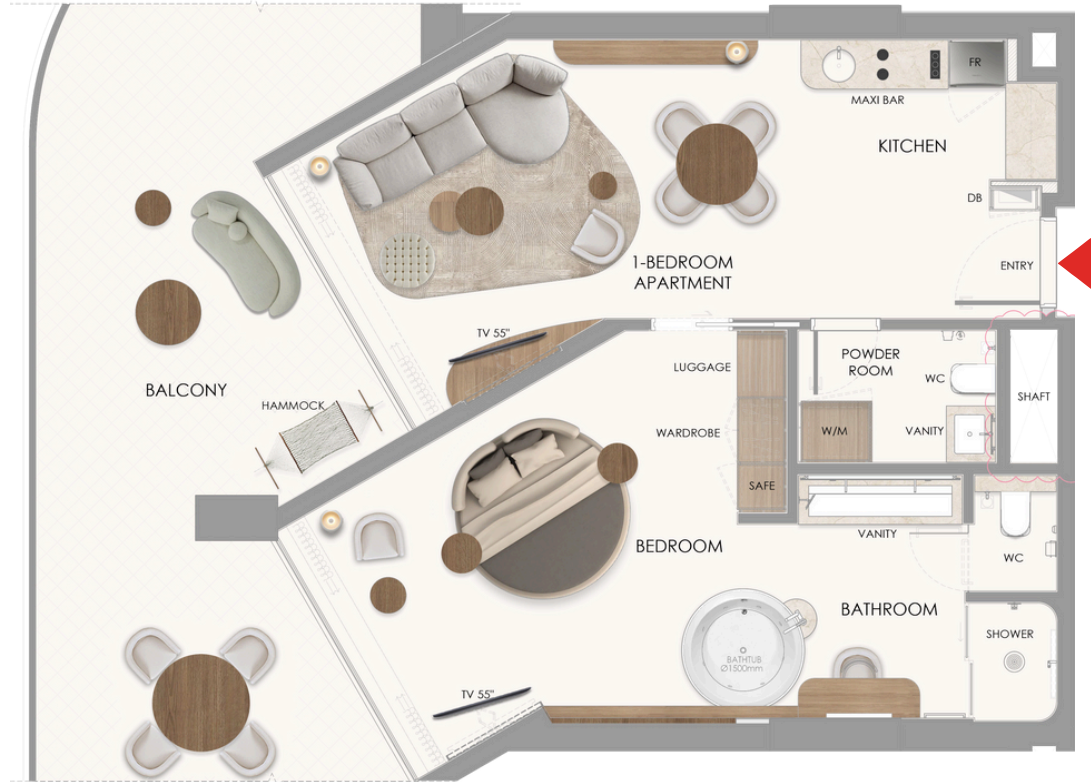
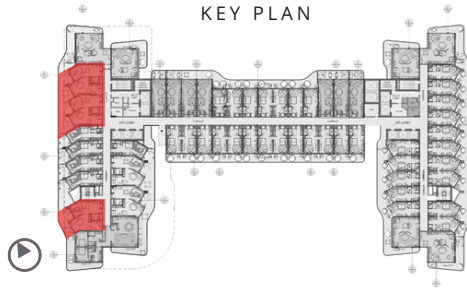


Disclaimer: 1. The ROI figures provided are based on actual assumptions and market trends, and may not reflect future outcomes. Buyers are advised to conduct their own research and seek professional advice before making investment decisions. We do not guarantee the accuracy of projected ROI and disclaim any liability for potential losses. 2. All dimensions are in imperial and metric and measured from finish to finish excluding construction tolerances. 3. All materials, dimensions, and drawings are approximate only. 4. Information is subject to change without notice, at the developer's absolute discretion. 5. Actual area may vary from the stated area. 6. All images used are for illustrative purposes only and do not represent the actual size, features, specifications, fittings, and furnishings. 7. The developer reserves the right to make alterations, without any liability whatsoever.



## APARMENT 1 BEDROOM APARTMENT

ROOM AREA	430.556 SQ.FT.	40.0 SQ.M.
BALCONY AREA	362.743 SQ.FT.	33.7 SQ.M.
TOTAL AREA	793.300 SQ.FT.	73.7 SQ.M.



Disclaimer: 1. The ROI figures provided are based on actual assumptions and market trends, and may not reflect future outcomes. Buyers are advised to conduct their own research and seek professional advice before making investment decisions. We do not guarantee the accuracy of projected ROI and disclaim any liability for potential losses. 2. All dimensions are in imperial and metric and measured from finish to finish excluding construction tolerances. 3. All materials, dimensions, and drawings are approximate only. 4. Information is subject to change without notice, at the developer's absolute discretion. 5. Actual area may vary from the stated area. 6. All images used are for illustrative purposes only and do not represent the actual size, features, specifications, fittings, and furnishings. 7. The developer reserves the right to make alterations, without any liability whatsoever.