

# THE HEIGHTS

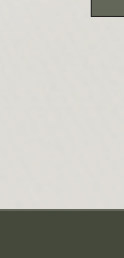
COUNTRY CLUB & WELLNESS



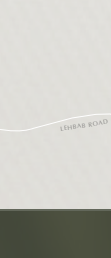
## Elevating Perspectives on Luxury

We are happy to announce the launch of our latest masterplan which reflects Dubai's progressive vision to enhance quality of life and promote well-being.

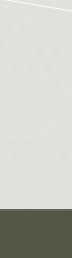
Live an exclusive retreat lifestyle in a vibrant community built around wellness, strategically tucked away in the growing expanse of Dubai.



10 Mins from Al Maktoum Int'l Airport



10 Mins from District 2020



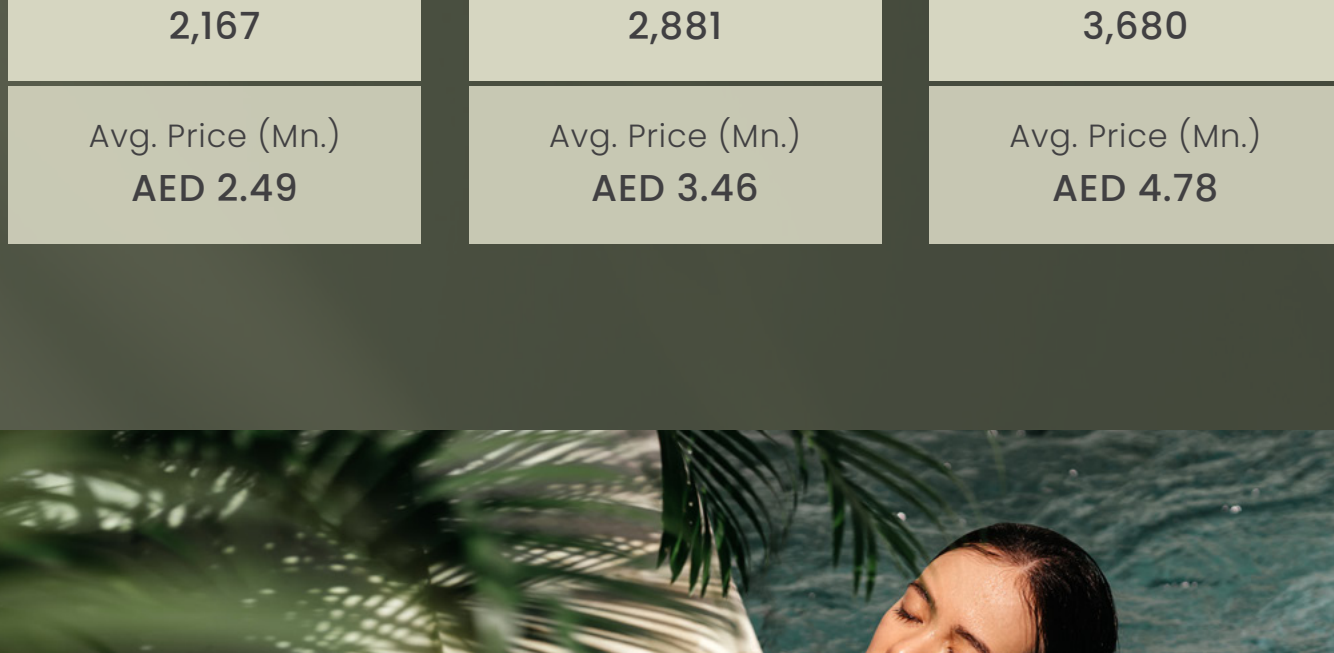
30 Mins from Downtown Dubai

## Strategically Located



## Live in Curated Havens

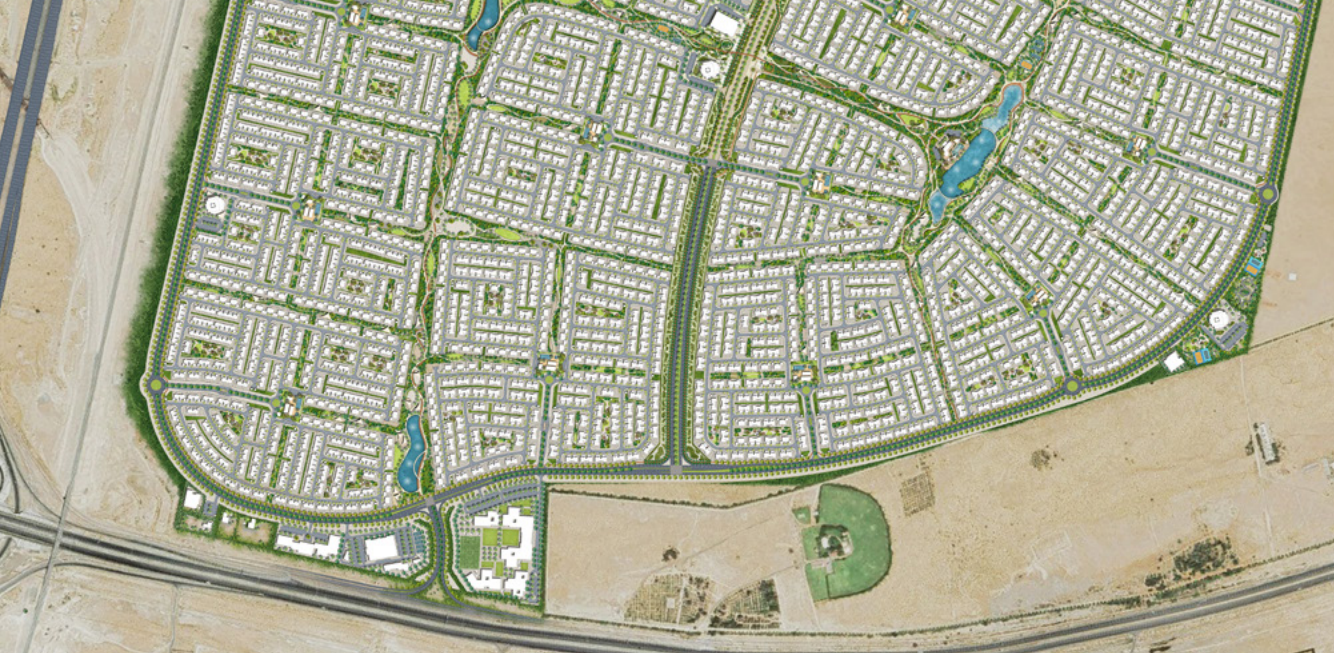
The residential offerings are a showcase of architectural brilliance, with options to suit a variety of tastes and preferences.



3 & 4 Bedroom Townhouses & 4 Bedroom Villas

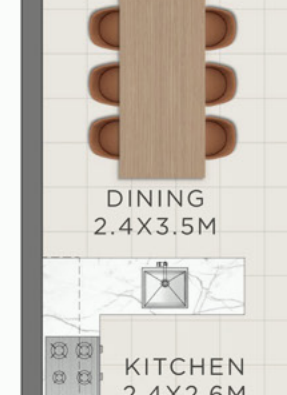
## Coming Soon

3 Bedroom Townhouse	4 Bedroom Townhouse	4 Bedroom Villa
Built Up (Sqft.) <b>2,167</b>	Built Up (Sqft.) <b>2,881</b>	Built Up (Sqft.) <b>3,680</b>
Avg. Price (Mn.) <b>AED 2.49</b>	Avg. Price (Mn.) <b>AED 3.46</b>	Avg. Price (Mn.) <b>AED 4.78</b>



A meticulously designed wellness centre lies at the heart of the community, surrounded by lush wellness greenways that offer serene pathways.

<b>1.36</b> Mn Sq.m Open Space	<b>39,119</b> Retail GFA	<b>38</b> Cycling Tracks
-----------------------------------	-----------------------------	-----------------------------



## Engage In Mindful Wellbeing

Own your home in community with infinite opportunities and spaces to build meaningful connections with like-minded people and curate memories of a lifetime and live the Country Club lifestyle.

## Unit Types

### TYPICAL 3 BEDROOM TOWNHOUSE LAYOUTS



GROUND FLOOR



FIRST FLOOR

### TYPICAL 4 BEDROOM TOWNHOUSE LAYOUTS



GROUND FLOOR



FIRST FLOOR

### TYPICAL 4 BEDROOM VILLA LAYOUTS



GROUND FLOOR



FIRST FLOOR



SECOND FLOOR