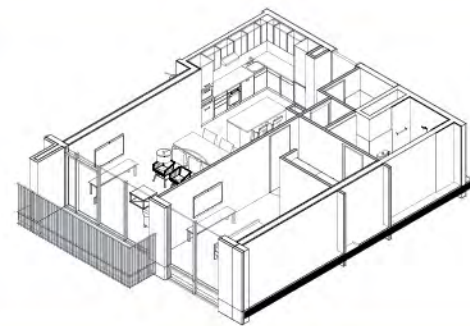


# 1 BEDROOM TYPE A1

## 1 Bedroom Type A1

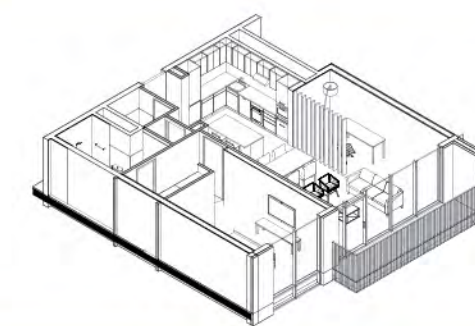
Net Area - 78.81 m<sup>2</sup>  
Balcony - 5.38 m<sup>2</sup>  
Unit Area - 848.32 sq. ft



# BEDROOM TYPE B1

## 1 Bedroom Type B1

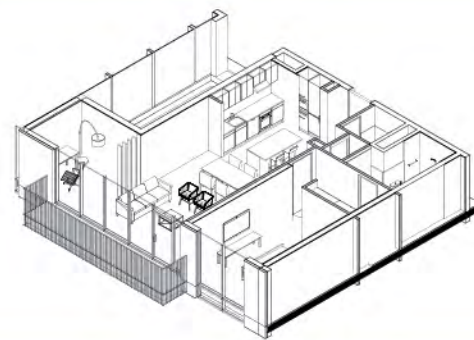
Net Area - 89.64 m<sup>2</sup>  
Balcony - 7.52 m<sup>2</sup>  
Unit Area - 964.84 sq. ft



# 1 BEDROOM TYPE B2

## 1 Bedroom Type B2

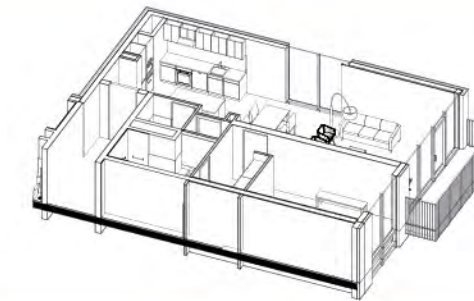
Net Area - 93.84 m<sup>2</sup>  
Balcony - 8.52 m<sup>2</sup>  
Unit Area - 1010.06 sq. ft



# BEDROOM TYPE C1

## 1 Bedroom Type C1

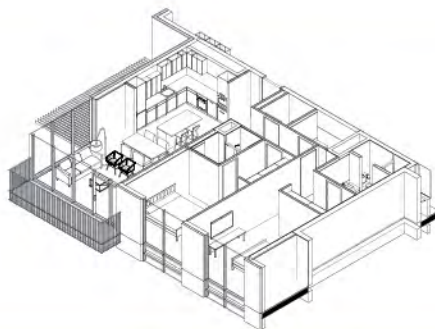
Net Area - 96.84 m<sup>2</sup>  
Balcony - 6.46 m<sup>2</sup>  
Unit Area - 1042.42 sq. ft



# 2 BEDROOM TYPE A

## 2 Bedroom Type A

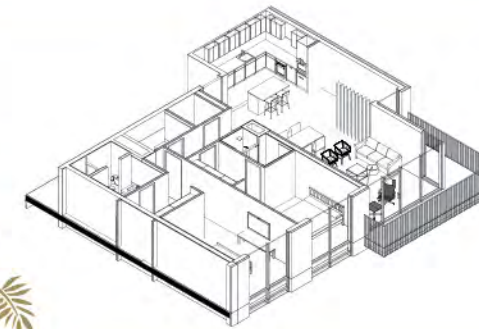
Net Area - 125.64 m<sup>2</sup>  
 Balcony - 6.81 m<sup>2</sup>  
 Unit Area - 1352.37 sq. ft



# BEDROOM TYPE B

## 2 Bedroom Type B

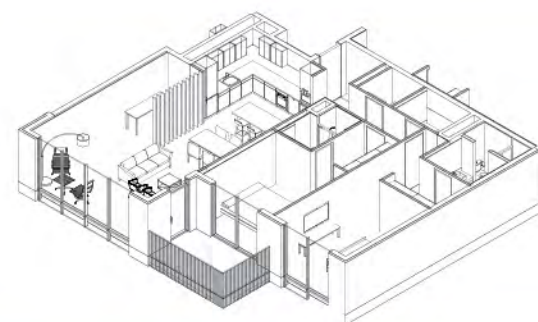
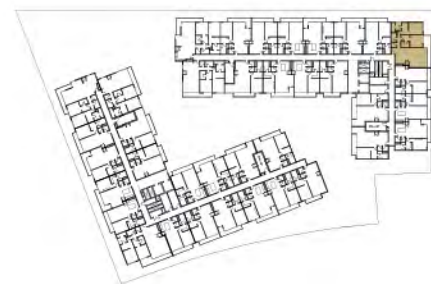
Net Area - 138.68 m<sup>2</sup>  
 Balcony - 14.71 m<sup>2</sup>  
 Unit Area - 1492.72 sq. ft



# 2 BEDROOM TYPE C

## 2 Bedroom Type C

Net Area - 130.75 m<sup>2</sup>  
 Balcony - 9.74 m<sup>2</sup>  
 Unit Area - 1407.42 sq. ft



# BEDROOM TYPE D

## 2 Bedroom Type D

Net Area - 121.19 m<sup>2</sup>  
 Balcony - 6.17 m<sup>2</sup>  
 Unit Area - 1304.47 sq. ft

