



Welcome to
PALM BEACH LIVING

P A L M
B E A C H
T O W E R S

Open doors to a vibrant way of living at the Palm Beach Towers, the amalgam of style and luxury that inspires a fresh perspective on life. With the sound of the waves as your backdrop, immerse yourself in the best the city has to offer and elevate your every day.

a vibrant way of living



An aerial photograph of a beach. The left side shows golden sand with long, dark shadows cast by palm trees. The right side shows clear, turquoise water with gentle ripples. A small person is visible in the water near the shoreline.

*The sun, sand
& palm tree life,*

AT YOUR DOORSTEP



*Wake up to
fresh perspective*

Come home to the exceptional every day at the Palm Beach Towers, with a wide range of world-class amenities that are tailored to complement your life, the way you want to live it.

A woman with blonde hair, wearing a black sports bra and shorts, is sitting in a lotus position on a blue mat. She is smiling slightly and has her hands resting on her knees in a meditative pose. The background shows a swimming pool with a white tiled edge, and beyond that, a beach and the ocean under a soft, hazy sky at sunset or sunrise. The overall mood is peaceful and serene.

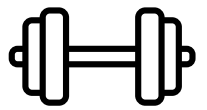
*Relax your
mind and body*



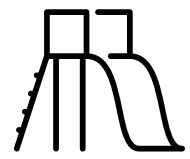
Exceptional amenities centered around you allow you to break free from the everyday and focus on what matters - nurturing your mind and body to be the best it can be. Meditate in the serenity of our yoga area, work out in the state-of-the-art gym or spoil yourself in our exceptional spa facilities; it's all about you.



YOGA AREA



GYM



PLAYGROUND &
SPORT FACILITIES



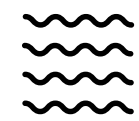
SPA

The water is always



by your side

Your living experience at the Palm Beach Towers is steeped in peace, with access to a plethora of water features that soothe the mind; from a luxurious outdoor infinity swimming pool that almost meets the horizon to your own private beach access for uninterrupted moments in the sun.



OUTDOOR INFINITY
SWIMMING POOL



PRIVATE
BEACH ACCESS



WATERFRONT PARK
AND PROMENADE



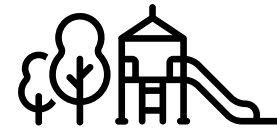
BOAT JETTY





*Beachside living
made luxurious*

Set each day apart from the last with inspired amenities that enhance the ordinary, adding a sense of wonder and energy to everyday life, for the entire family. Drop your kids by the play area where they can have a whole lot of fun while you unwind with friends over a cup of your favorite coffee.



KIDS' PLAY AREA;
INDOOR & OUTDOOR



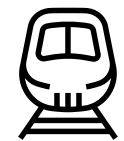
MULTI-PURPOSES
ROOM



RESIDENTIAL
LOUNGE



CAFÉ



MONORAIL
ACCESS



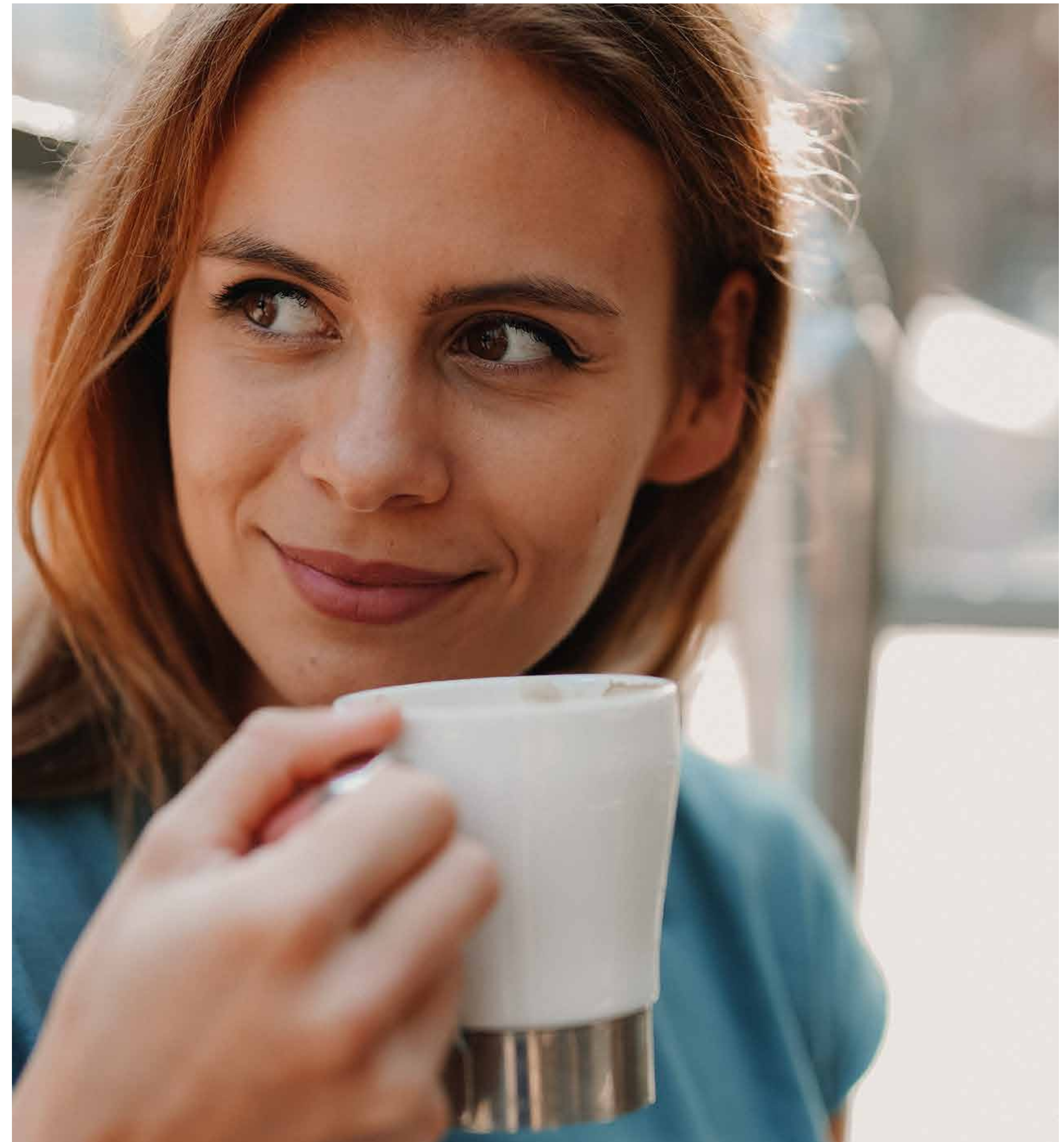
TRAM
ACCESS



RETAIL



VIEWING
DECK





*Beautiful
on the inside*

Every single home at the Palm Beach Towers, be it one, two, three, four-bedroom or penthouse, offers sunlit spaces, exceptional kitchens, and stunning fixtures and finishes. This means every moment you spend at home is nothing but perfect, be it entertaining in the expansive living and dining area or relaxing immersed in the light and airy aesthetic.

Beautiful on the outside



Beautiful vistas spread out in front of you from everywhere you look, with spectacular views including the Palm Jumeirah, the Dubai Eye and so much more. Wake up each day taking in the spectacular views and immerse yourself in the stunning every day.

A high-angle, low-shot photograph of a person walking on a stone-paved path next to a swimming pool. The person is wearing white, wide-leg trousers and brown flip-flops. A large, light-colored straw hat lies on the path to the right of the person. The pool's water is clear and blue, reflecting the sky and palm trees. The path is made of light-colored, irregularly shaped stone tiles. In the bottom right corner, there is a small bush with green leaves and orange flowers. The overall scene is bright and sunny, suggesting a warm, tropical environment.

*Find something
memorable*

IN YOUR FLIP FLOPS

The Palm Beach Towers is located at the entrance of Palm Jumeirah, right in the middle of one the most exciting and vibrant areas of the city. Enjoy the freedom of taking a sunny stroll to some of the most renowned restaurants or spend a day shopping at luxury retail brands that you love; at the Palm Beach Towers, the memorable is never too far away. You are also connected to the entire city with both tram and monorail access, making it easy to take in experiences across the city, no matter where they may be.

Dining & Entertainment

- 1 Atlantis, The Palm
- 2 WHITE Beach Dubai
- 3 Social District
- 4 Nakheel Mall
- 5 Palm West Beach
- 6 Club Vista Marie
- 7 The Pointe
- 8 The View
- 9 St. Regis

Experiences

- 1 Marina Beach
- 2 Aquaventure Water Park
- 3 Palm Jumeirah Corniche
- 4 Dolphin Bay

Convenience

- Supermarkets
- Tram Access
- Metro Access



Come Explore
THE PALM BEACH LIFE



NAKHEEL

P A L M
B E A C H
T O W E R S