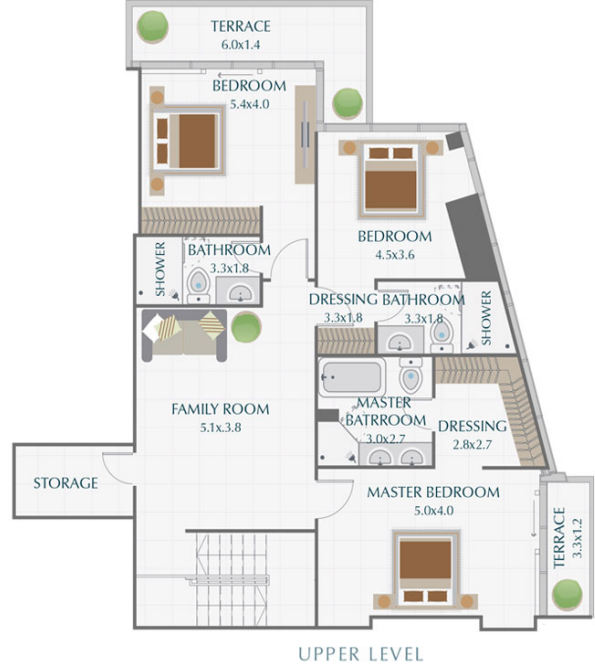


# Park Gate Residence



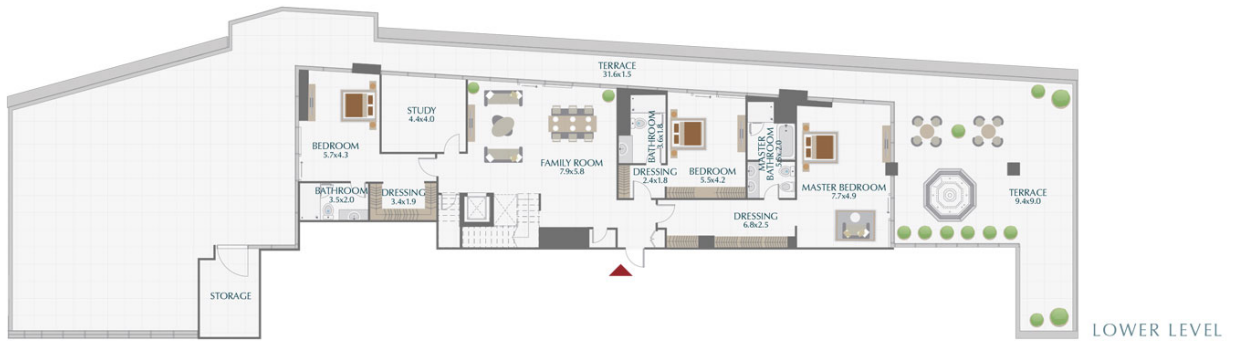
## PARK GATE RESIDENCES



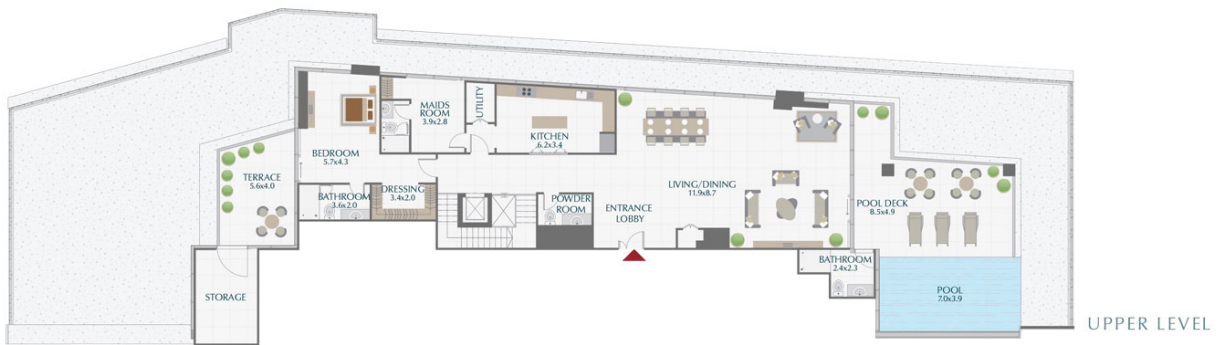
### 3BR PODIUM TOWNHOUSE / TYPE 5

SUITE	3,029.83 SQ.FT.	281.48 SQ.M.
TERRACE	961.43 SQ.FT.	89.32 SQ.M.
<b>TOTAL</b>	<b>3,991.26 SQ.FT.</b>	<b>370.80 SQ.M.</b>

# PARK GATE RESIDENCES



LOWER LEVEL



UPPER LEVEL

## 4 BR PENTHOUSE

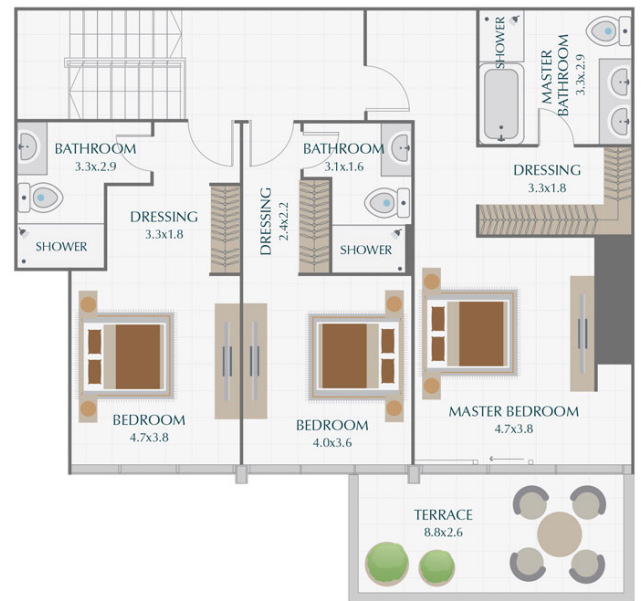
SUITE	5,875.48 SQ.FT.	545.85 SQ.M.
TERRACE	4,996.39 SQ.FT.	464.18 SQ.M.
<b>TOTAL</b>	<b>10,871.87 SQ.FT.</b>	<b>1,010.03 SQ.M.</b>

room dimensions are in metric and measured to structural elements and exclude wall finishes and construction tolerances. Calculation of suite area is measured as the area bounded by the centerline of demising or party walls separating one unit from another unit, the exterior surface of all exterior walls and the exterior surface of the corridor wall on enclosing and abutting the unit. Calculation of Terrace area is measured as the area bounded by the centerline of demising or party walls separating one unit from another unit, the outermost face of the enclosing guard and the external face of the site abutting the balcony. All materials, dimensions & drawings features and amenities are approximate at the time of printing. Information subject to change without notice. Actual suite areas may vary from the stated area. Drawings are not to scale E&O. The developer reserves the right to make revisions.

# PARK GATE RESIDENCES



LOWER LEVEL



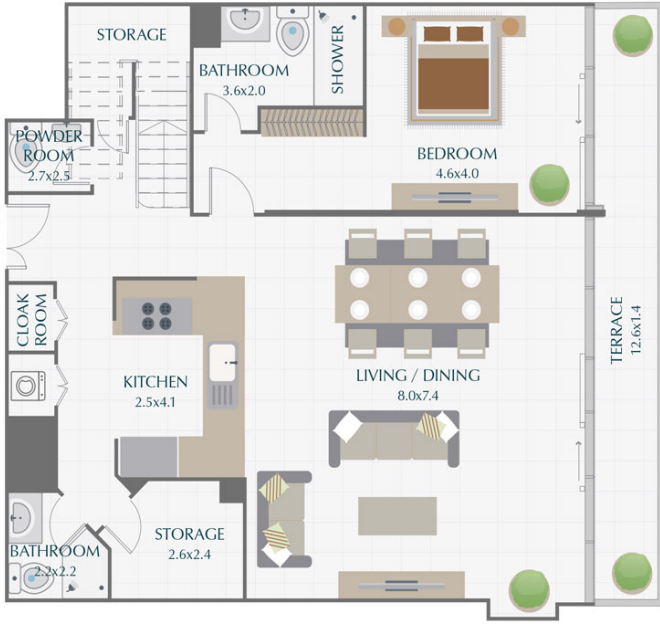
UPPER LEVEL

## 4BR PODIUM TOWNHOUSE / TYPE 3

SUITE	3,258.24 SQ.FT.	302.70 SQ.M.
TERRACE	851.00 SQ.FT.	79.06 SQ.M.
<b>TOTAL</b>	<b>4,109.24 SQ.FT.</b>	<b>381.76 SQ.M.</b>

Room dimensions are in metric and measured to structural elements and exclude wall finishes and construction tolerances. Calculation of suite area is measured as the area bounded by the centerline of demising or party walls separating one unit from another unit, the exterior surface of all exterior walls and the exterior surface of the corridor wall on enclosing and abutting the unit. Calculation of Terrace area is measured as the area bounded by the centerline of demising or party walls separating one unit from another unit, the outermost face of the enclosing guard and the external face of the site abutting the balcony. All materials, dimensions & drawings features and amenities are approximate at the time of printing. Information subject to change without notice. Actual suite areas may vary from the stated area. Drawings are not to scale E&EO. The developer reserves the right to make revisions.

# PARK GATE RESIDENCES



LOWER LEVEL



UPPER LEVEL

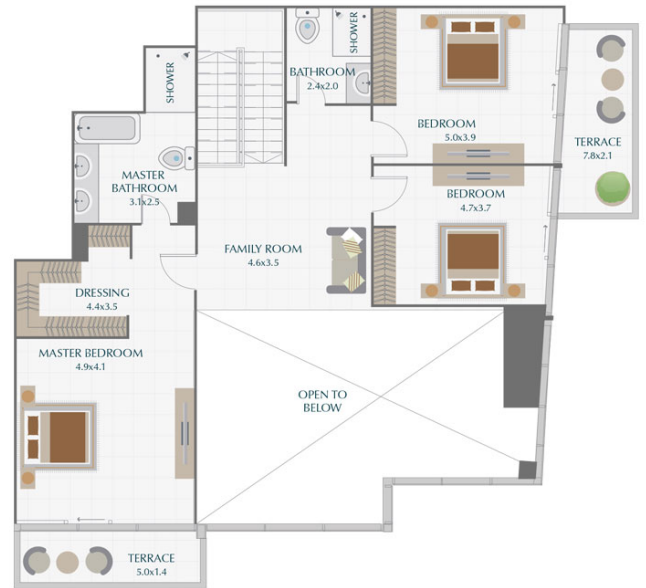
## 4BR PODIUM TOWNHOUSE / TYPE 4A

SUITE	3,260.61 SQ.FT.	302.92 SQ.M.
TERRACE	400.85 SQ.FT.	37.24 SQ.M.
<b>TOTAL</b>	<b>3,661.46 SQ.FT.</b>	<b>340.16 SQ.M.</b>

# PARK GATE RESIDENCES



LOWER LEVEL

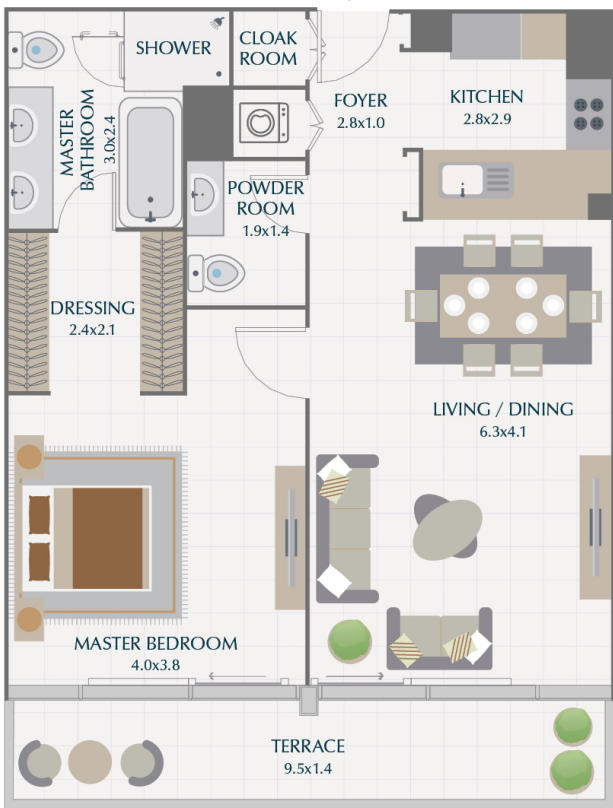


UPPER LEVEL

## 5BR PODIUM TOWNHOUSE / TYPE 1

SUITE	3,419.00 SQ.FT.	317.64 SQ.M.
TERRACE	943.00 SQ.FT.	87.61 SQ.M.
<b>TOTAL</b>	<b>4,362.00 SQ.FT.</b>	<b>405.25 SQ.M.</b>

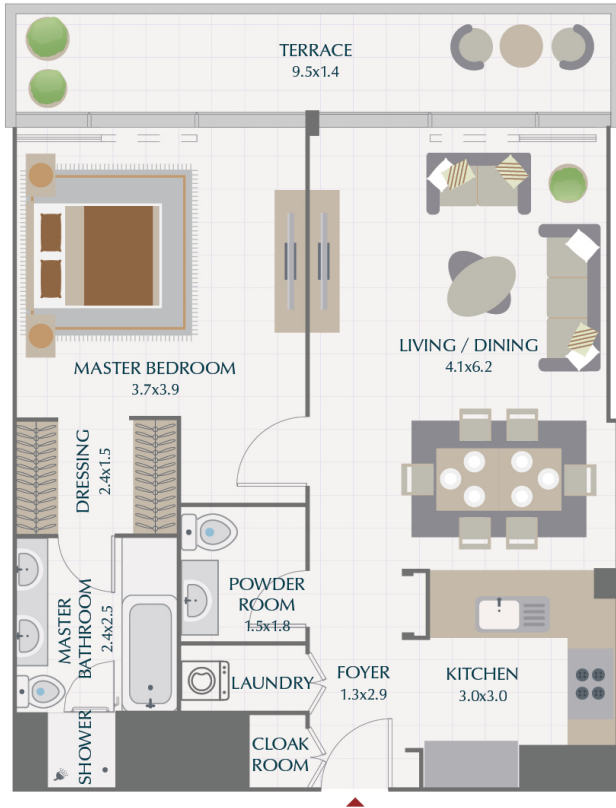
All room dimensions are in metric and measured to structural elements and exclude wall finishes and construction tolerances. Calculation of suite area is measured as the area bounded by the centerline of demising or party walls separating one unit from another unit, the exterior surface of all exterior walls and the exterior surface of the corridor wall on enclosing and abutting the unit. Calculation of Terrace area is measured as the area bounded by the centerline of demising or party walls separating one unit from another unit, the outermost face of the enclosing guard and the external face of the site abutting the balcony. All materials, dimensions & drawings features and amenities are approximate at the time of printing. Information subject to change without notice. Actual suite areas may vary from the stated area. Drawings are not to scale E&CO. The developer reserves the right to make revisions.



**1 BR / TYPE 1A**  
PARK GATE RESIDENCES

SUITE	851.7 SQ.FT.	79.1 SQ.M.
TERRACE	146.8 SQ.FT.	13.6 SQ.M.
<b>TOTAL</b>	<b>998.5 SQ.FT.</b>	<b>92.7 SQ.M.</b>

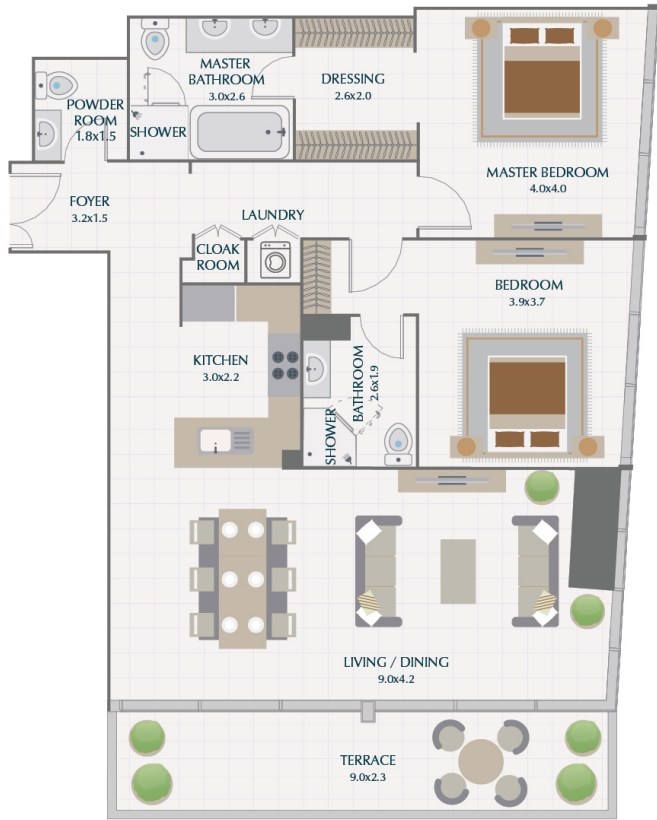
All room dimensions are in metric and measured to structural elements and enclosure finishes and construction tolerances. Calculation of site area is measured as the area bounded by the centerline of demarcating or party walls separating one unit from another unit, the exterior surface of all exterior walls and the exterior surface of the corridor wall or enclosure and abutting the site. Calculation of terrace area is measured as the area bounded by the centerline of demarcating or party walls separating one unit from another unit, the outermost face of the enclosing guard rail and the external face of the site abutting the balcony. All materials, dimensions & drawings features and amenities are approximate as the time of printing, information subject to change without notice. Actual site areas may vary from the stated area. Drawings are not to scale-EGECO. The Developer reserves the right to make revisions.



**1 BR / TYPE 4A**  
PARK GATE RESIDENCES

SUITE	844.1 SQ.FT.	78.4 SQ.M.
TERRACE	145.4 SQ.FT.	13.5 SQ.M.
<b>TOTAL</b>	<b>989.5 SQ.FT.</b>	<b>91.9 SQ.M.</b>

All room dimensions are in metric and measured to structural elements and enclosures wall finishes and construction tolerances. Calculation of suite area is measured as the area bounded by the centerline of demarcating or party walls separating one unit from another unit, the exterior surface of all exterior walls and the interior surface of the corridor wall on enclosing and abutting the suite. Calculation of terrace area is measured as the area bounded by the centerline of demarcating or party walls separating one unit from another unit, the seaward face of the enclosing guard rail the external face of the site abutting the balcony. All materials, dimensions & drawings features and amenities are approximate at the time of printing, information subject to change without notice. Actual suite areas may vary from the stated area. Drawings are not to scale-EGECO. The developer reserves the right to make revisions.



**2 BR / TYPE 1A**  
**PARK GATE RESIDENCES**

SUITE	1365.2 SQ.FT.	126.8 SQ.M.
TERRACE	206.9 SQ.FT.	19.2 SQ.M.
<b>TOTAL</b>	<b>1572.1 SQ.FT.</b>	<b>146.0 SQ.M.</b>

All room dimensions are in metric and measured to structural elements and enclosure wall finishes and construction tolerances. Calculation of suite area is measured as the area bounded by the centerline of demarcating or party walls separating one unit from another unit, the exterior surface of all exterior walls and the interior surface of the corridor wall on enclosing and abutting the unit. Calculation of terrace area is measured as the area bounded by the centerline of demarcating or party walls separating one unit from another unit, the outermost face of the enclosing guard rail and the external face of the site abutting the balcony. All materials, dimensions & drawings features and amenities are approximate at the time of printing, information subject to change without notice. Actual suite areas may vary from the stated area. Drawings are not to scale-EGECO. The Developer reserves the right to make revisions.





**2 BR / TYPE 2A**

**PARK GATE RESIDENCES**

SUITE	1413.6 SQ.FT.	131.3 SQ.M.
TERRACE	137.3 SQ.FT.	12.8 SQ.M.
<b>TOTAL</b>	<b>1550.9 SQ.FT.</b>	<b>144.1 SQ.M.</b>

All room dimensions are in metric and measured to structural elements and enclose wall finishes and construction tolerances. Calculation of site area is measured as the area bounded by the centerline of demarcation or party walls separating one unit from another unit, the exterior surface of all exterior walls and the exterior surface of the corridor wall or enclosure and abutting the site. Calculation of terrace area is measured as the area bounded by the centerline of demarcation or party walls separating one unit from another unit, the outermost face of the enclosing guard rail and the external face of the site abutting the balcony. All materials, dimensions & drawings features and amenities are approximate at the time of printing, information subject to change without notice. Actual site areas may vary from the stated area. Drawings are not to scale-EGECO. The Developer reserves the right to make revisions.



**2 BR / TYPE 3A**

**PARK GATE RESIDENCES**

SUITE	1460.8 SQ.FT.	135.7 SQ.M.
TERRACE	151.6 SQ.FT.	14.1 SQ.M.
<b>TOTAL</b>	<b>1612.4 SQ.FT.</b>	<b>149.8 SQ.M.</b>

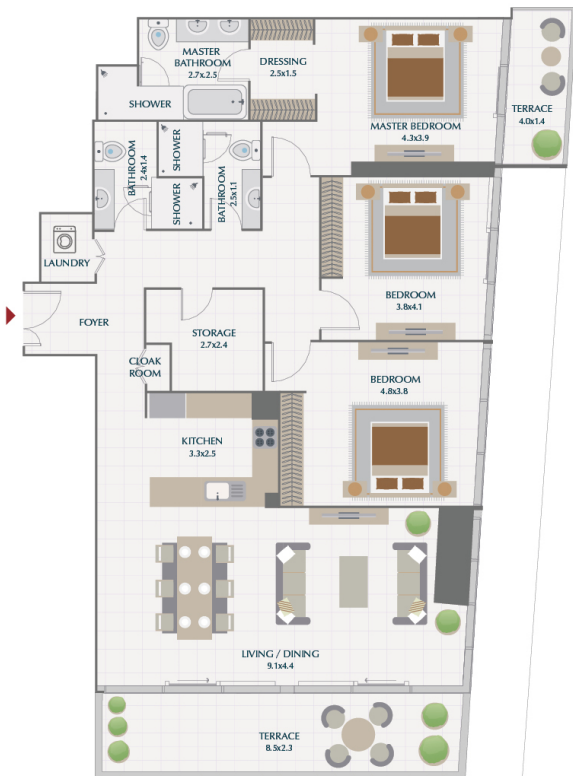
All room dimensions are in metric and measured to structural elements and enclosure wall finishes and construction tolerances. Calculation of site area is measured as the area bounded by the centerline of demarcating or party walls separating one unit from another unit, the exterior surface of all exterior walls and the exterior surface of the corridor wall or enclosure and dividing the site. Calculation of terrace area is measured as the area bounded by the centerline of demarcating or party walls separating one unit from another unit, the outermost face of the enclosing guard rail and the external face of the site abutting the balcony. All materials, dimensions & drawings features and amenities are approximate as the time of printing, information subject to change without notice. Actual site areas may vary from the stated area. Drawings are not to scale-EGECO. The Developer reserves the right to make revisions.



**2 BR / TYPE 4A**  
**PARK GATE RESIDENCES**

SUITE	1377.1 SQ.FT.	127.9 SQ.M.
TERRACE	257.5 SQ.FT.	23.9 SQ.M.
<b>TOTAL</b>	<b>1634.6 SQ.FT.</b>	<b>151.8 SQ.M.</b>

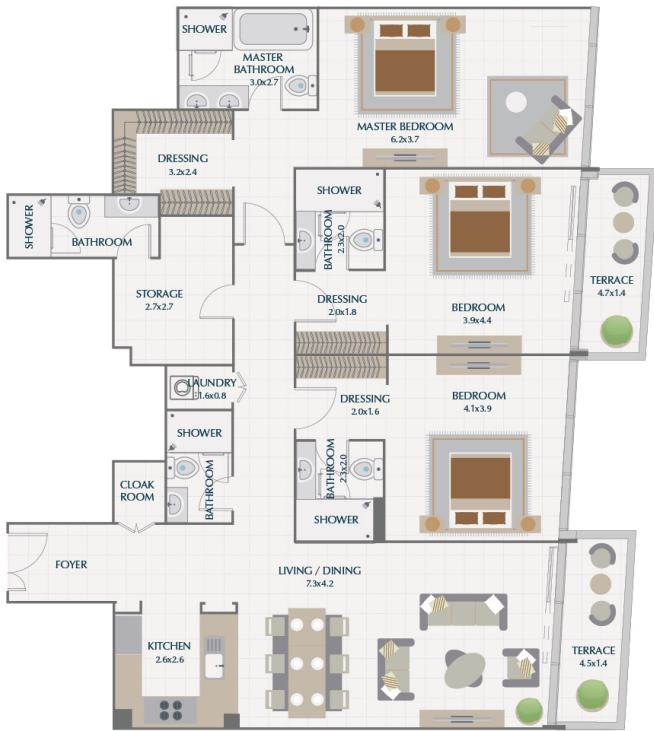
All room dimensions are in metric and measured to structural elements and exclusive of finishes and construction tolerances. Calculation of site area is measured as the area bounded by the centerline of demarcating or party walls separating one unit from another unit, the exterior surface of all exterior walls and the exterior surface of the corridor wall on enclosing and abutting the site. Calculation of terrace area is measured as the area bounded by the centerline of demarcating or party walls separating one unit from another unit, the outermost face of the enclosing guard rail and the external face of the site abutting the balcony. All materials, dimensions & drawings features and amenities are approximate as the time of printing, information subject to change without notice. Actual site areas may vary from the stated area. Drawings are not to scale-EGECO. The Developer reserves the right to make revisions.



**3 BR / TYPE 1A**  
**PARK GATE RESIDENCES**

SUITE	1790.3 SQ.FT.	166.3 SQ.M.
TERRACE	270.7 SQ.FT.	25.2 SQ.M.
<b>TOTAL</b>	<b>2061.0 SQ.FT.</b>	<b>191.5 SQ.M.</b>

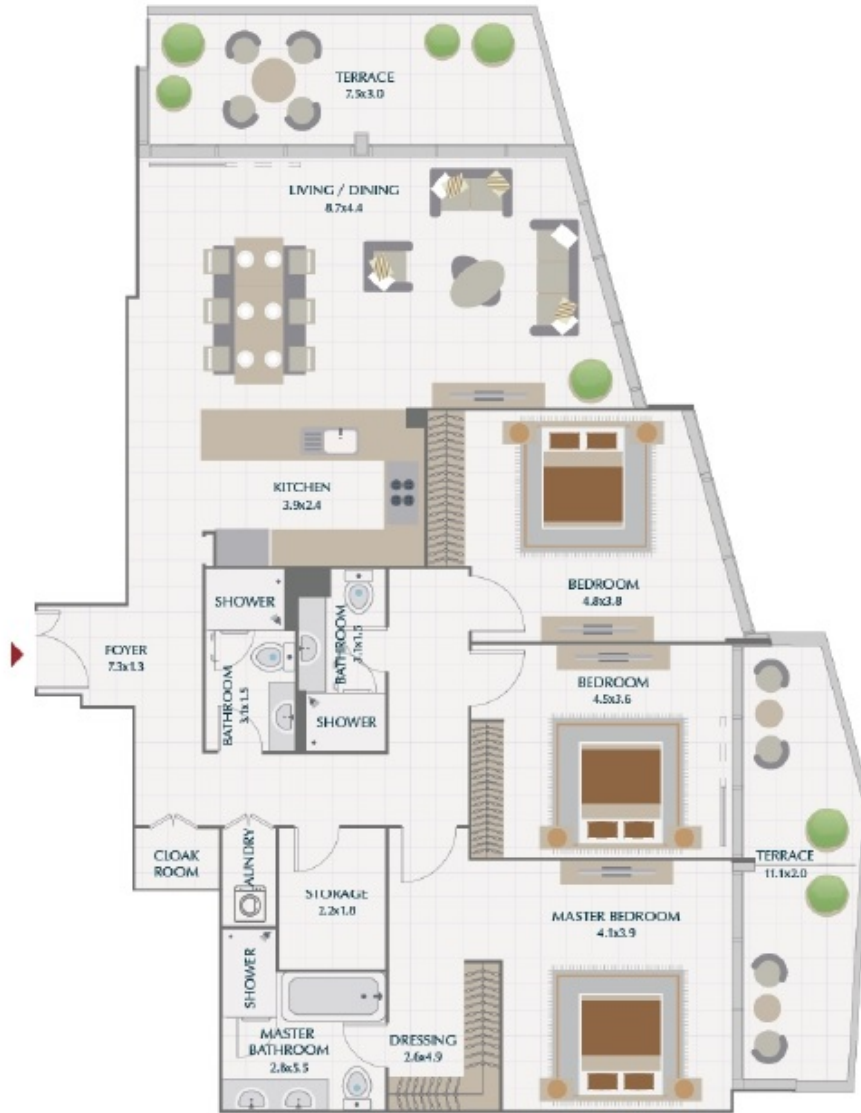
All room dimensions are in metric and measured to structural elements and enclosure wall finishes and construction tolerances. Calculation of site area is measured as the area bounded by the centerline of demarcation or party walls separating one unit from another unit, the exterior surface of all exterior walls and the exterior surface of the corridor wall on enclosing and enclosing the site. Calculation of terrace area is measured as the area bounded by the centerline of demarcation or party walls separating one unit from another unit, the outermost face of the enclosing guard and the external face of the site abutting the balcony. All materials, dimensions & drawings features and amenities are approximate at the time of printing, information subject to change without notice. Actual site areas may vary from the stated area. Drawings are not to scale-EGECO. The Developer reserves the right to make revisions.



**3 BR / TYPE 2**  
**PARK GATE RESIDENCES**

SUITE	2021.4 SQ.FT.	187.8 SQ.M.
TERRACE	142.6 SQ.FT.	13.3 SQ.M.
<b>TOTAL</b>	<b>2164.0 SQ.FT.</b>	<b>201.1 SQ.M.</b>

All room dimensions are in metric and measured to structural elements and enclose wall finishes and construction tolerances. Calculation of site area is measured as the area bounded by the centerline of demarcation or party walls separating one unit from another unit, the exterior surface of all exterior walls and the exterior surface of the corridor wall on enclosing and dividing the site. Calculation of terrace area is measured as the area bounded by the centerline of demarcation or party walls separating one unit from another unit, the outermost face of the enclosing guard rail and the external face of the site abutting the balcony. All materials, dimensions & drawings features and amenities are approximate at the time of printing, information subject to change without notice. Actual site areas may vary from the stated area. Drawings are not to scale-EGECO. The developer reserves the right to make revisions.



**3 BR / TYPE 3A**  
**PARK GATE RESIDENCES**

SUITE	1816.8 SQ.FT.	168.8 SQ.M.
TERRACE	342.8 SQ.FT.	31.9 SQ.M.
<b>TOTAL</b>	<b>2159.6 SQ.FT.</b>	<b>200.7 SQ.M.</b>