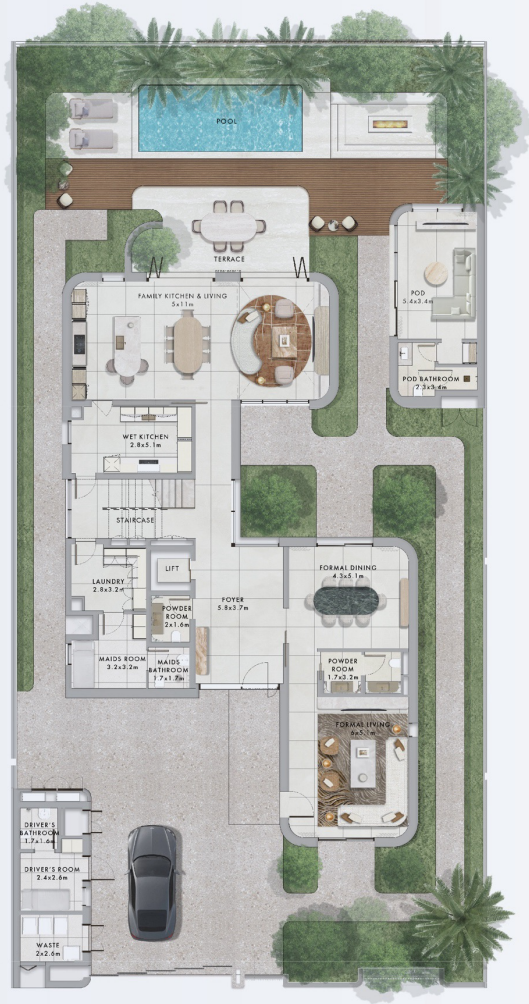


FLOOR PLANS

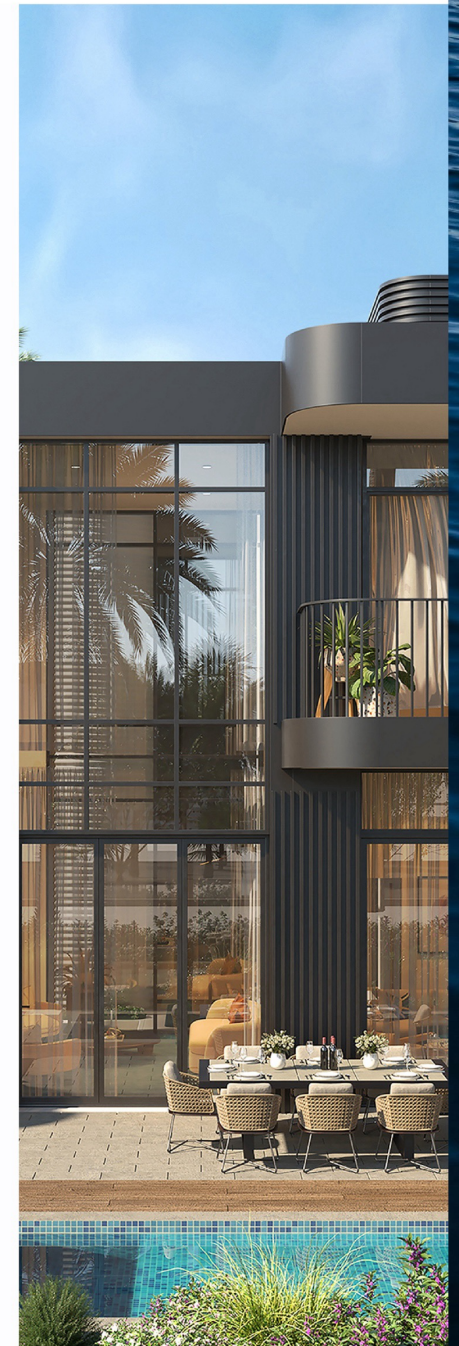


4-BED INLAND VILLA

Light Scheme

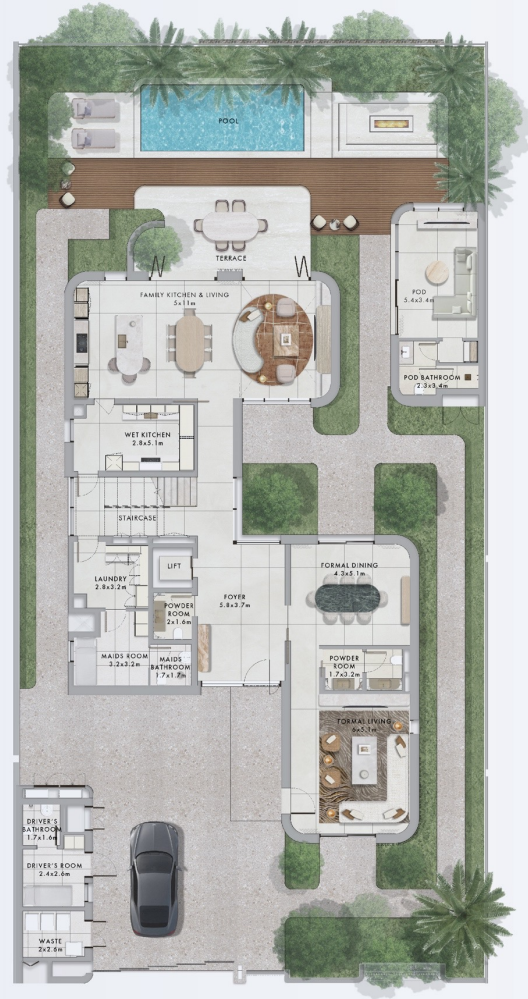


Average area: 481 SQM



4-BED INLAND VILLA

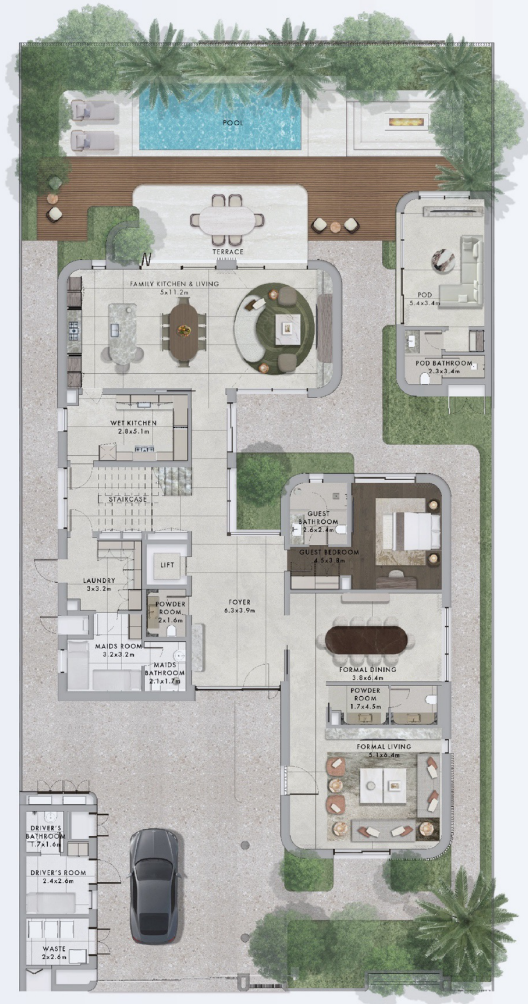
Dark Scheme



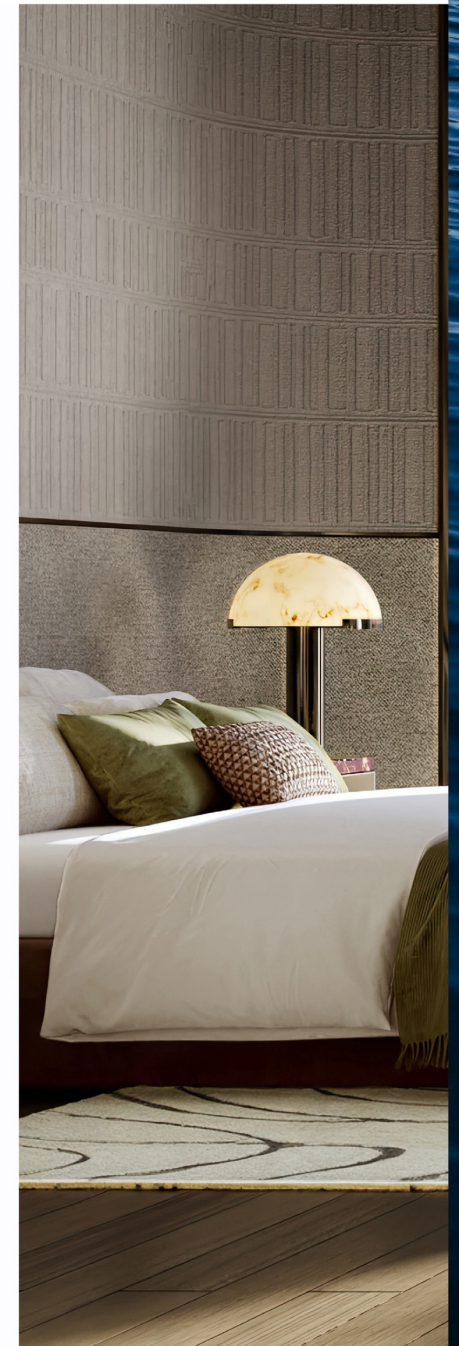
Average area: 481 SQM

5-BED INLAND VILLA

Dark Scheme



Average area: 562 SQM

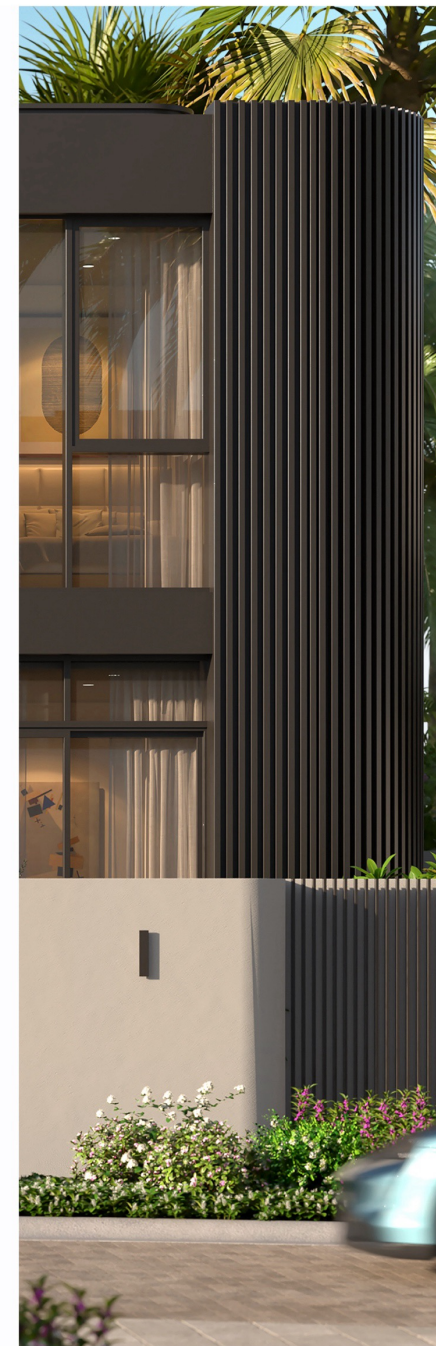


5-BED INLAND VILLA

Light Scheme

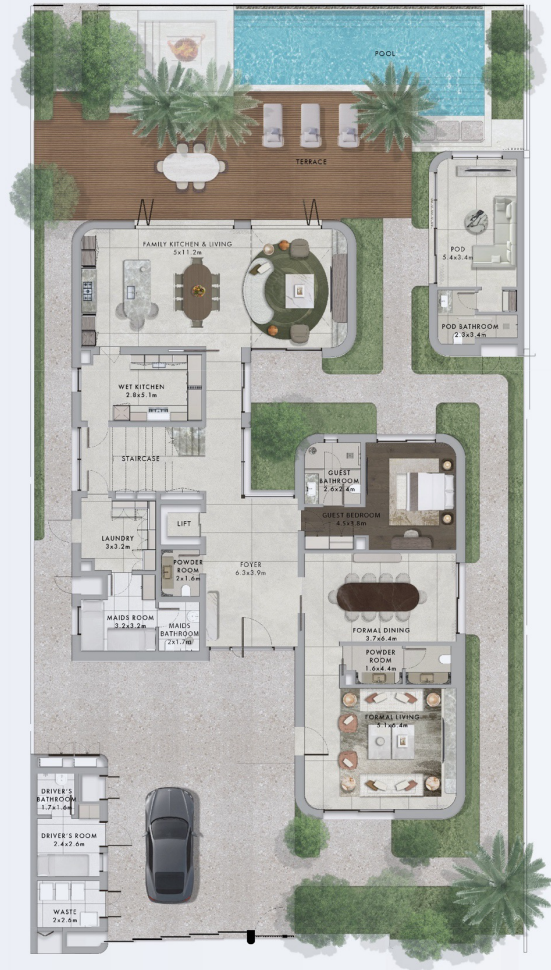


Average area: 562 SQM



5-BED CANAL VILLA

Dark Scheme

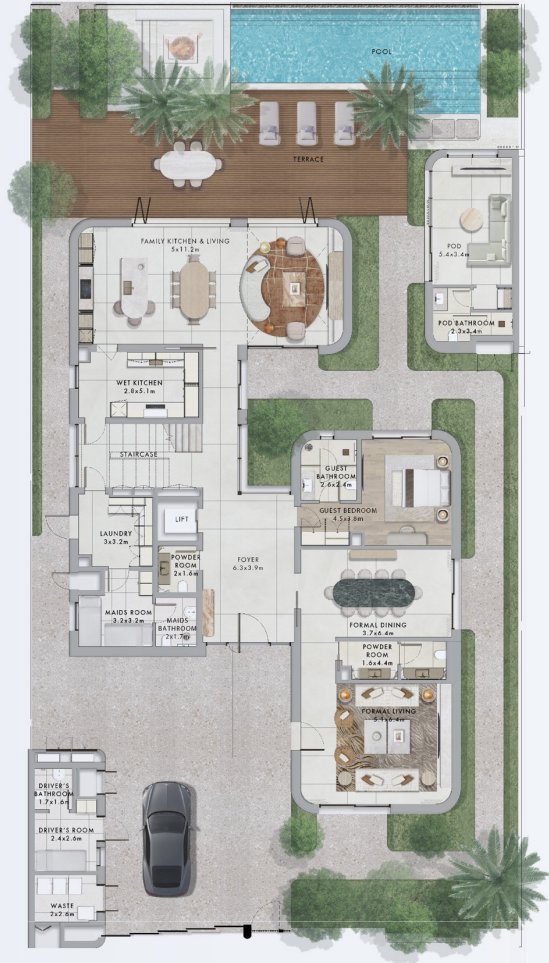


Average area: 571 SQM

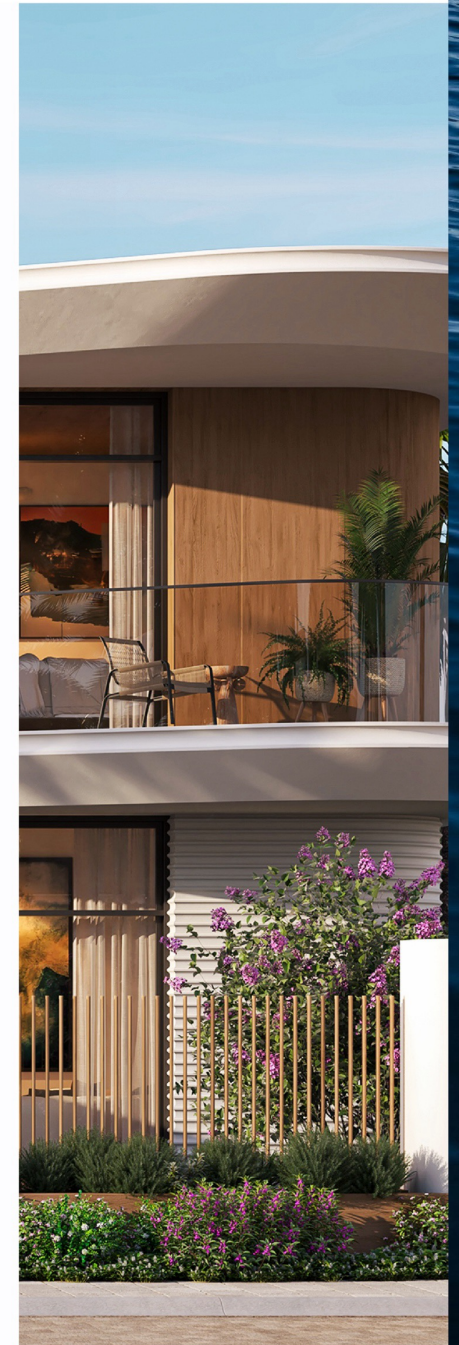


5-BED CANAL VILLA

Light Scheme



Average area: 571 SQM

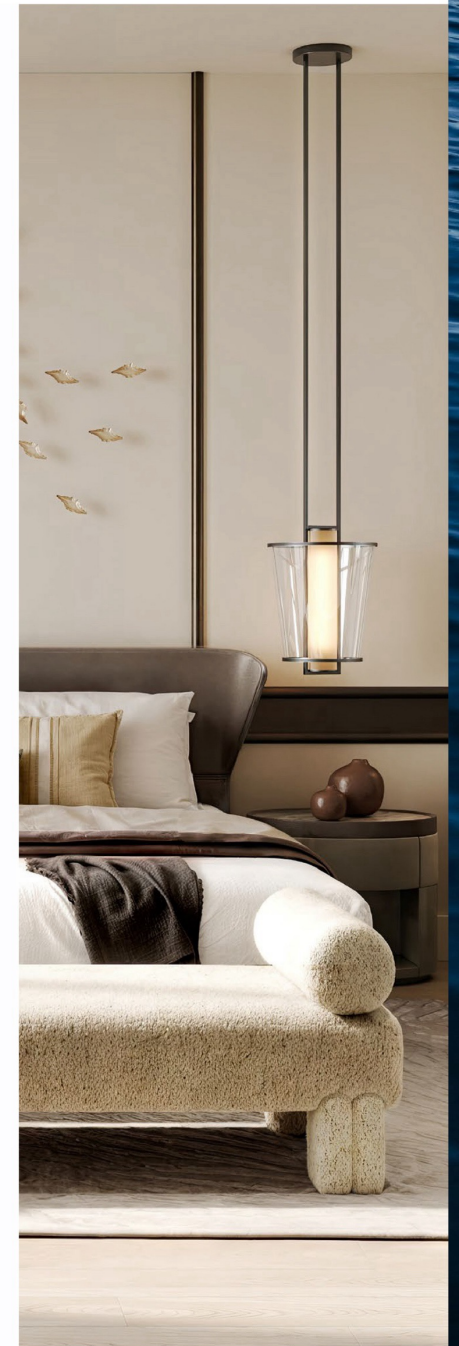


6-BED CANAL VILLA

Dark Scheme



Average area: 631 SQM



6-BED CANAL VILLA

Light Scheme



Average area: 631 SQM



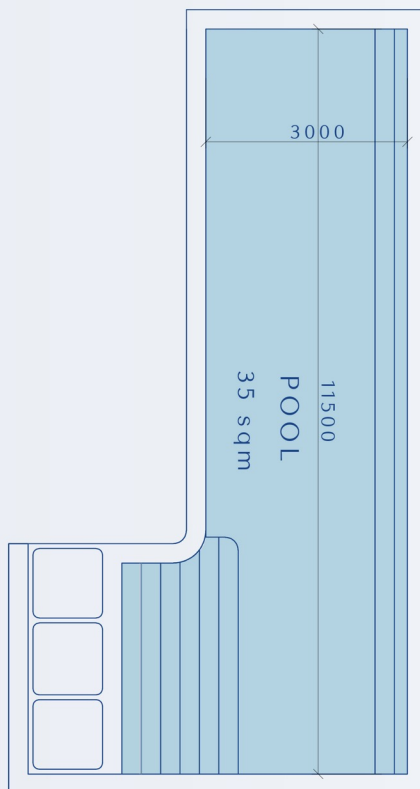


CHOICE TO INCLUDE A POD OR A POOL

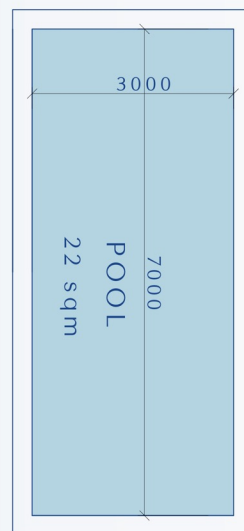
POOL LAYOUTS

Canal and Inland

Canal units



Inland units



POD LAYOUT

Canal and Inland

