



**MAGCITY**  
TOWNHOUSES



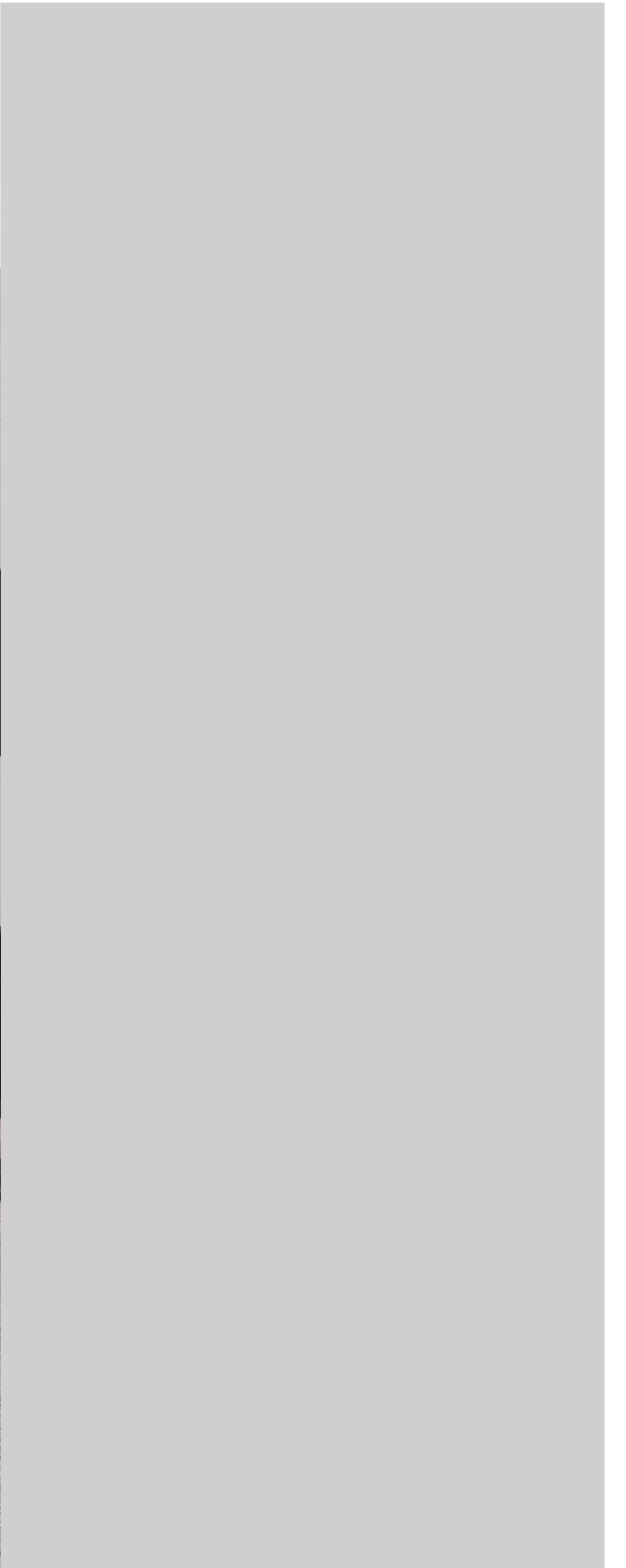
Great design is  
eliminating all  
unnecessary  
details.

- Minh D. Tran



102

































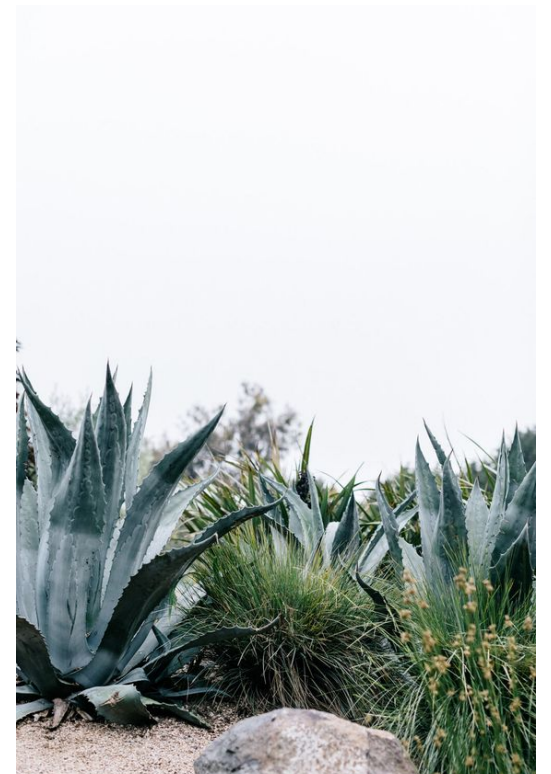










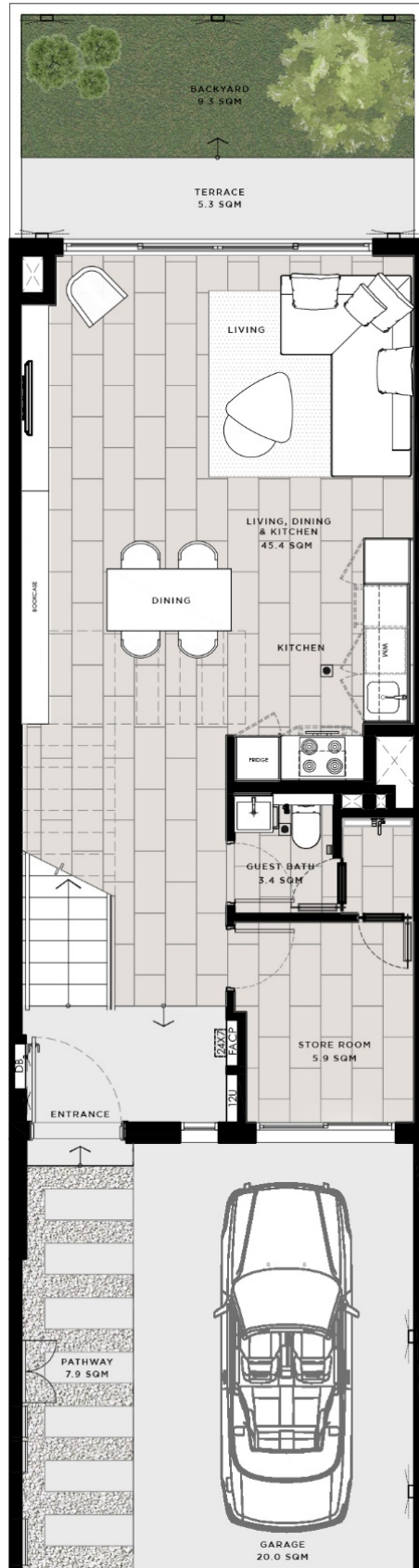




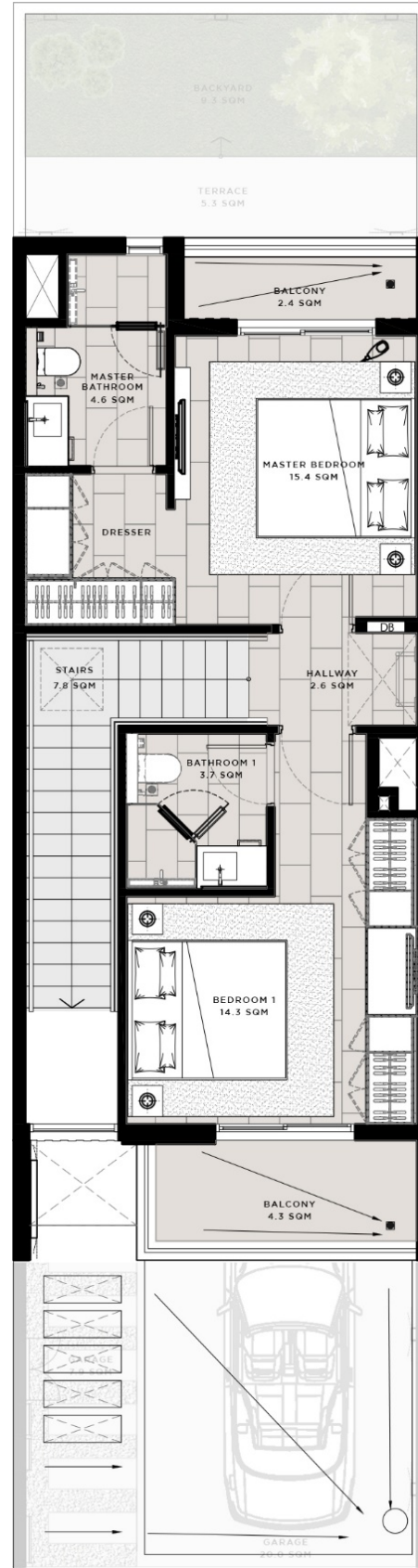


**MAGCITY**  
TOWNHOUSES





GROUND FLOOR



FIRST FLOOR



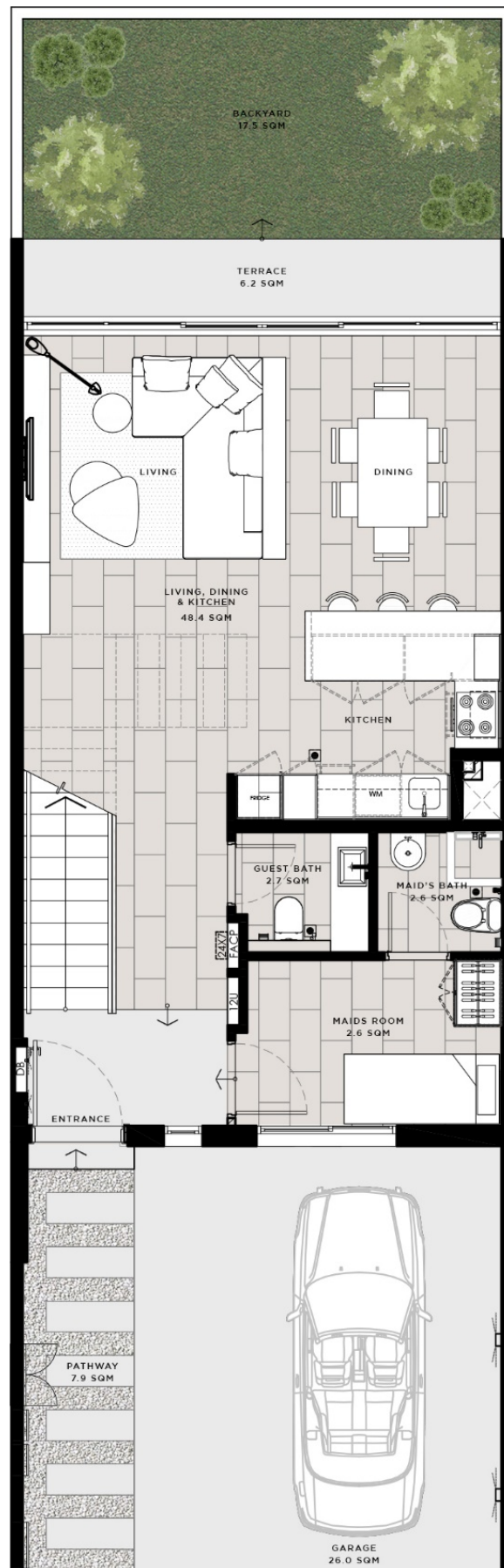
## 2 BEDROOM

TWO - BEDROOM TOWNHOUSE AREA SUMMARY	
LOCATION	FLOOR AREA (SQM)
<b>GROUND FLOOR</b>	
- LIVING, DINING AND KITCHEN	45.4
- STORE ROOM	5.9
- GUEST BATHROOM	3.4
<b>FIRST FLOOR</b>	
- BEDROOM 1	14.3
- BEDROOM 1 BATHROOM	3.7
- BEDROOM 1 BALCONY	4.3
- MASTER BEDROOM	15.4
- MASTER BEDROOM BATHROOM	4.6
- MASTER BEDROOM BALCONY	2.4
- HALLWAY AT FIRST FLOOR	2.6
<b>OTHERS</b>	
- STAIRS	7.8
- GARAGE	19.9
- ENTRANCE PATHWALK	7.9
- BACKYARD	9.3
- TERRACE	5.3
<b>TOTAL</b>	<b>152.2</b>

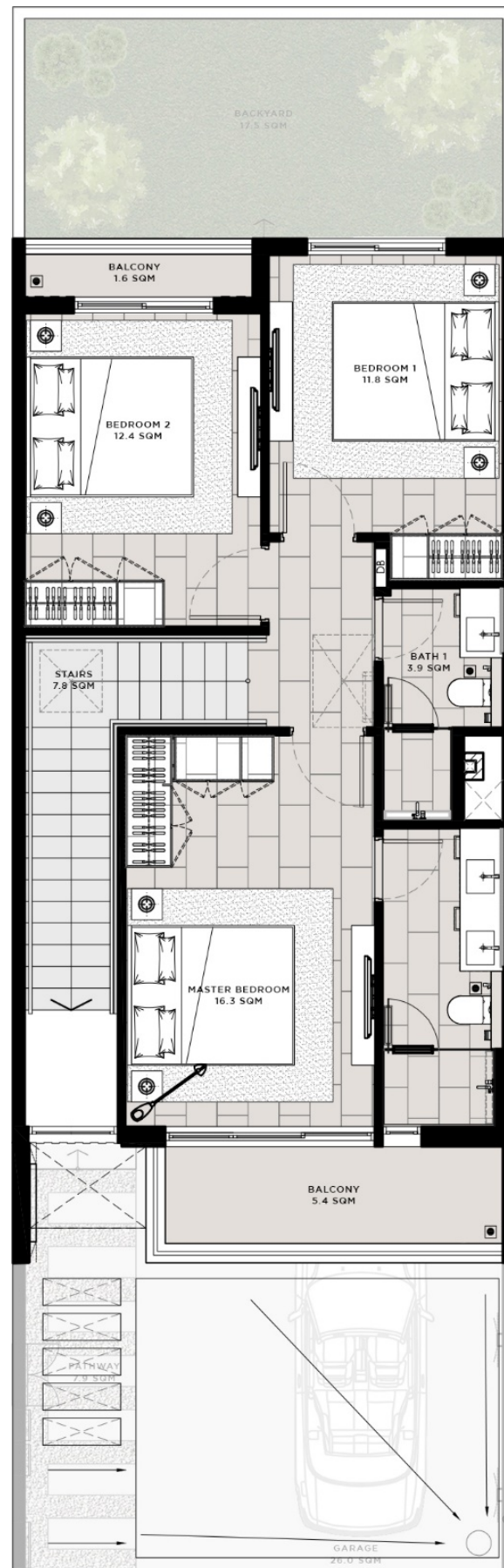


## 3 BEDROOM

THREE - BEDROOM TOWNHOUSE AREA SUMMARY	
LOCATION	FLOOR AREA (SQM)
<b>GROUND FLOOR</b>	
- LIVING, DINING AND KITCHEN	48.4
- MAID'S ROOM	7.3
- MAID'S BATHROOM	2.6
- GUEST BATHROOM	2.7
<b>FIRST FLOOR</b>	
- BEDROOM 1	11.8
- BEDROOM 2	12.4
- BEDROOM 2 BALCONY	1.6
- COMMON BATHROOM	3.9
- MASTER BEDROOM	16.3
- MASTER BEDROOM BATHROOM	5.9
- MASTER BEDROOM BALCONY	5.4
- HALLWAY AT FIRST FLOOR	3.6
<b>OTHERS</b>	
- STAIRS	7.8
- GARAGE	26.0
- ENTRANCE PATHWALK	7.9
- BACKYARD	17.5
- TERRACE	6.2
<b>TOTAL</b>	<b>187.3</b>



GROUND FLOOR



FIRST FLOOR

































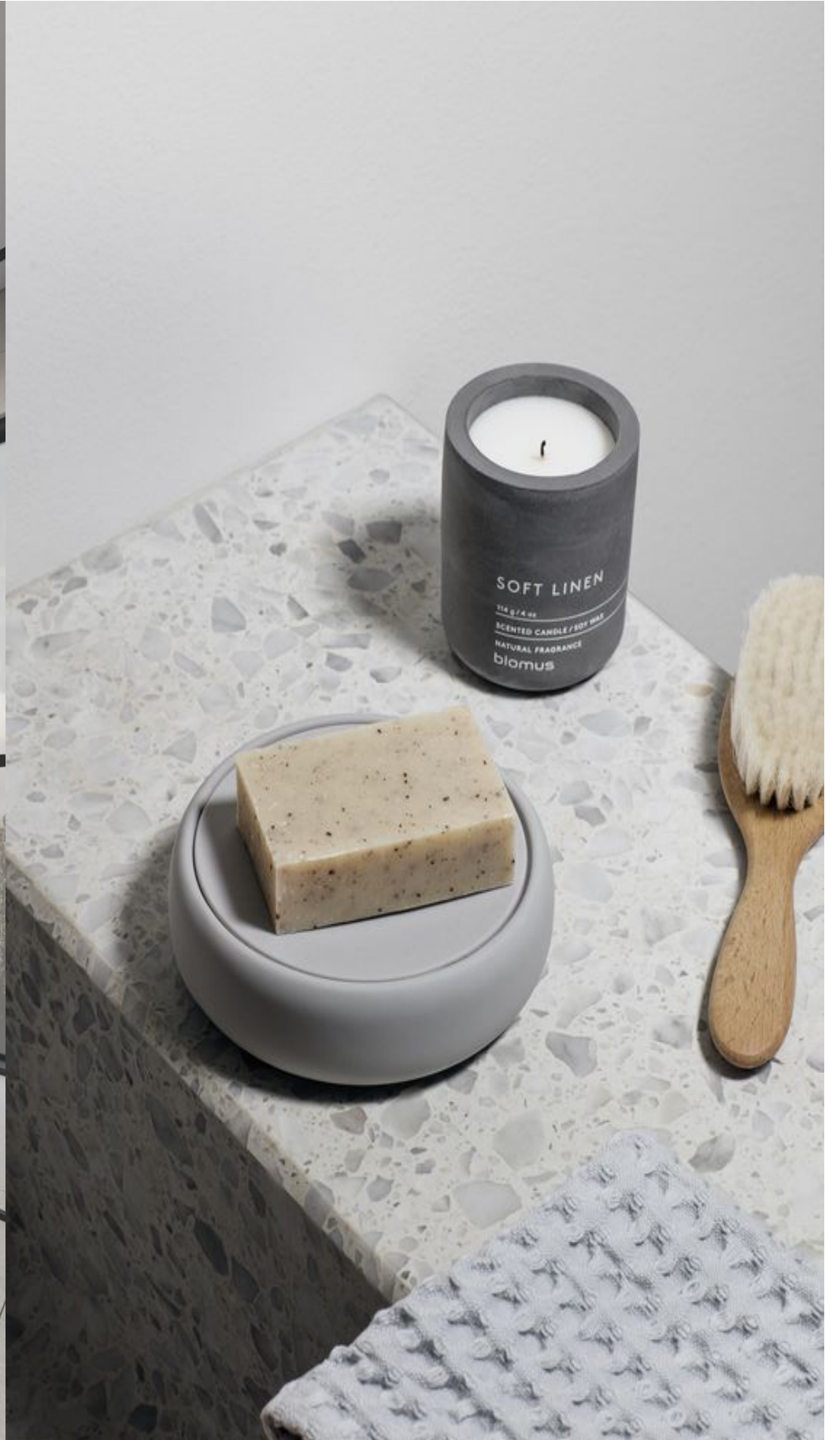








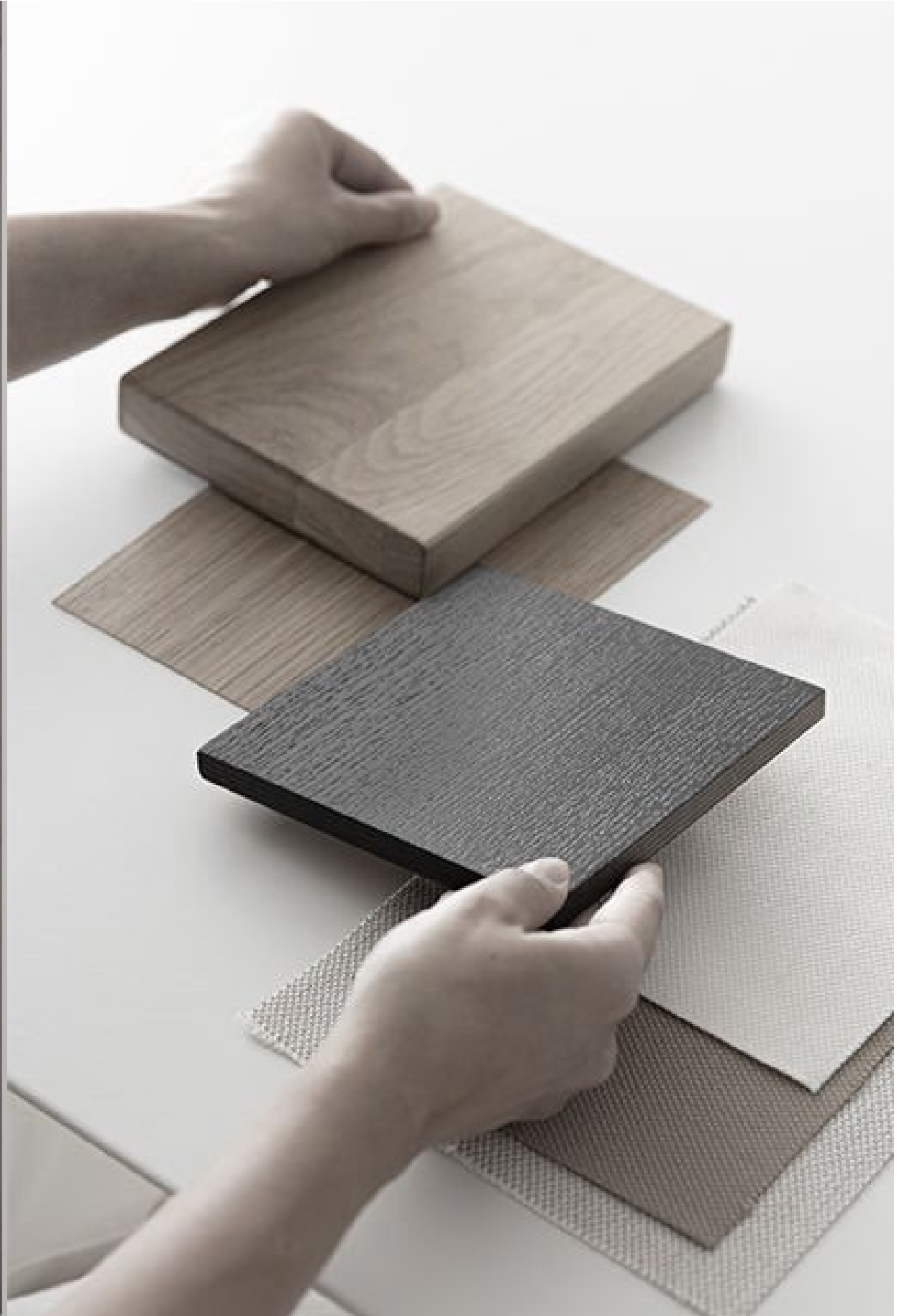
















**MAGCITY**  
TOWNHOUSES



# 4 BEDROOM



GROUND FLOOR



FIRST FLOOR

FOUR - BEDROOM TOWNHOUSE AREA SUMMARY	
LOCATION	FLOOR AREA (SQM)
<b>GROUND FLOOR</b>	
- LIVING, DINING AND KITCHEN	66.9
- MAID'S ROOM	12.5
- MAID'S BATHROOM	2.7
- GUEST BATHROOM	2.4
<b>FIRST FLOOR</b>	
- BEDROOM 1	14.6
- BEDROOM 1 BATHROOM	4.7
- BEDROOM 2	15.0
- BEDROOM 2 BATHROOM	4.5
- BEDROOM 3	12.7
- BEDROOM 3 BATHROOM	4.6
- BEDROOM 3 BALCONY	4.1
- MASTER BEDROOM	22.2
- MASTER BEDROOM BATHROOM	4.9
- HALLWAY AT FIRST FLOOR	8.2
<b>OTHERS</b>	
- STAIRS	7.3
- GARAGE	31.7
- ENTRANCE PATHWALK	8.6
- BACKYARD	53.9
- WALKWAY	32.0
- TERRACE 1	5.7
- TERRACE 2	8.0
<b>TOTAL</b>	<b>327.3</b>





































TOLKO













