

# 1 BEDROOM APARTMENT

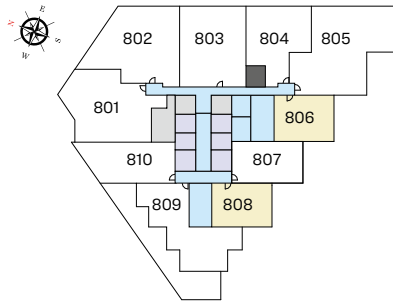
TYPE A (with powder room + balcony)

## TOTAL SALEABLE AREA

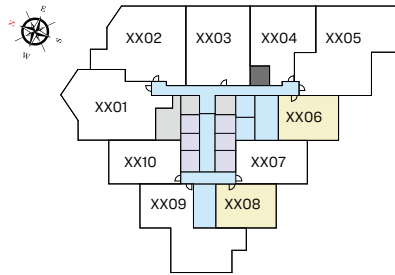
SUITE RANGE = 728.07 - 735.28 SQ.FT.

BALCONY RANGE = 70.18 - 71.80 SQ.FT.

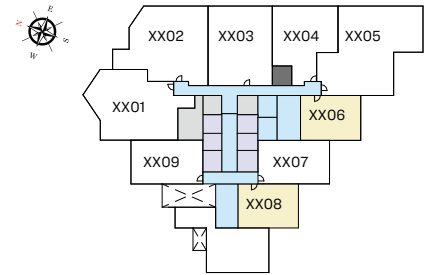
TOTAL RANGE = 798.57 - 807.08 SQ.FT.



LEVEL 08

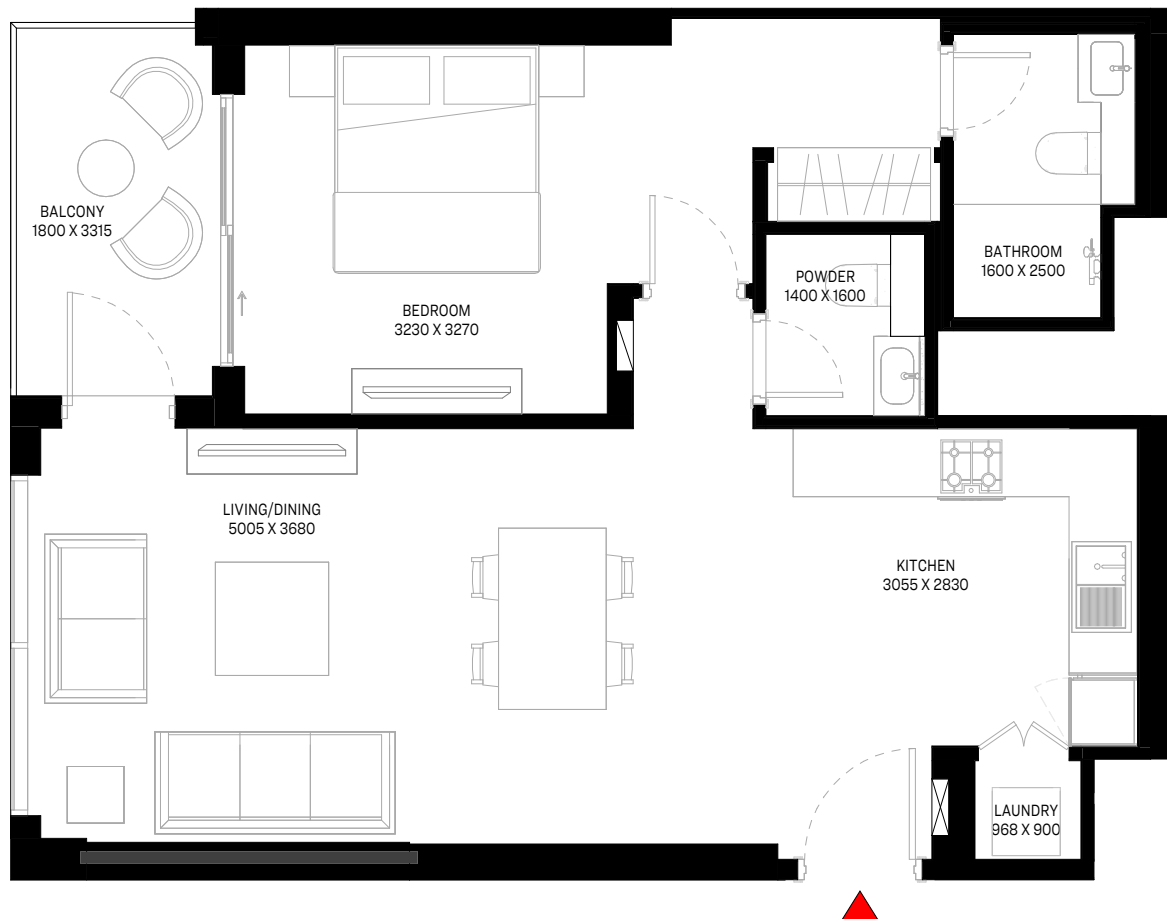


TYPICAL FLOOR PLAN  
(10,12,14,16,18,20,22,24,26,28,30,32,34)\_LOWER LEVEL



TYPICAL FLOOR PLAN  
(07,09,11,13,15,17,19,21,23,25,27,29,31,33,35)\_UPPER LEVEL

UNIT



List of unit numbers with this unit plan:

## VIEWS

Hartland, Amenities

706, 708, 806, 808

Hartland, Waterfront, Amenities

906, 908, 1006, 1008, 1106, 1108, 1206, 1208, 1306, 1308, 1406, 1408, 1506, 1508

Hartland, Waterfront

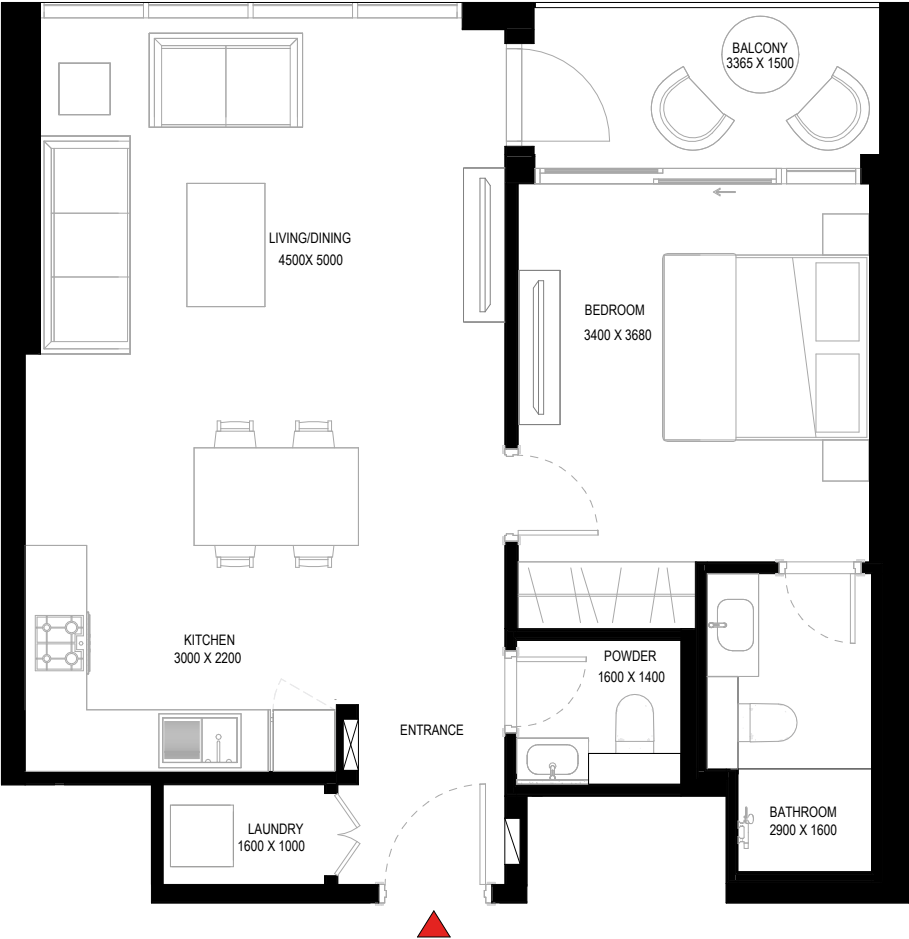
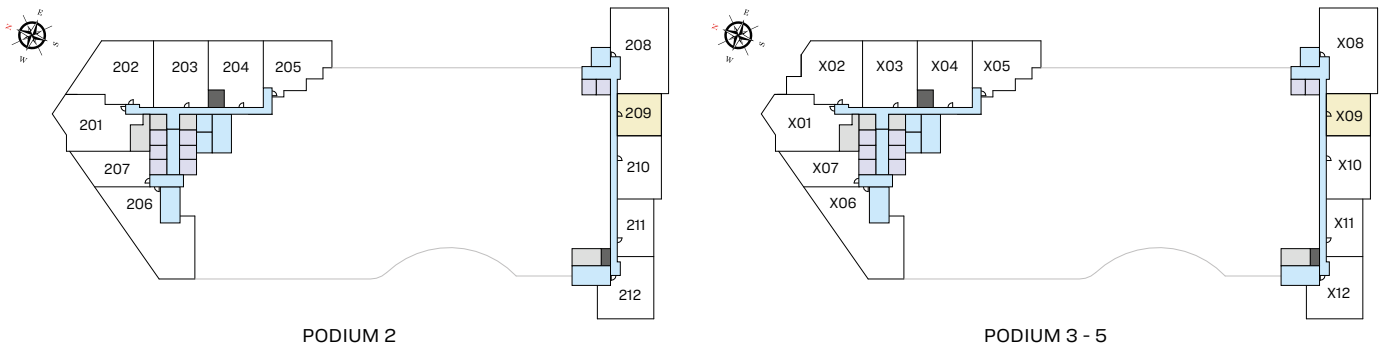
1606, 1608, 1706, 1708, 1806, 1808, 1906, 1908, 2006, 2008, 2106, 2108, 2206, 2208, 2306, 2308, 2406, 2408, 2506, 2508, 2606, 2608, 2706, 2708, 2806, 2808, 2906, 2908, 3006, 3008, 3106, 3108, 3206, 3208, 3306, 3308, 3406, 3408, 3506, 3508

Disclaimer: 1. All dimensions are in metric, measured to wall finishes. 2. All materials, dimensions & drawings are approximate. 3. Information is subject to change without notice, at developer's absolute discretion. 4. Actual area may vary from the stated area. 5. Drawing are not to scale. 6. All images used are for illustrative purpose only and do not represent the actual size, features, specifications, fittings and furnishings. 7. The developer reserves the right to make revisions/ alterations, at its absolute discretion, without any liability whatsoever.

# 1 BEDROOM APARTMENT

## TYPE C (with powder room + balcony)

**TOTAL SALEABLE AREA**  
 SUITE = 696.64 SQ.FT.  
 BALCONY = 65.34 SQ.FT.  
 TOTAL = 761.98 SQ.FT.



List of unit numbers with this unit plan:

### VIEWS

**Waterfront**  
 209, 309, 409, 509

Disclaimer: 1. All dimensions are in metric, measured to wall finishes. 2. All materials, dimensions & drawings are approximate. 3. Information is subject to change without notice, at developer's absolute discretion. 4. Actual area may vary from the stated area. 5. Drawing are not to scale. 6. All images used are for illustrative purpose only and do not represent the actual size, features, specifications, fittings and furnishings. 7. The developer reserves the right to make revisions/ alterations, at its absolute discretion, without any liability whatsoever.

## 1.5 BEDROOM APARTMENT

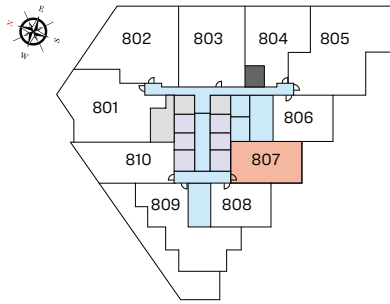
TYPE D (with study room + balcony)

### TOTAL SALEABLE AREA

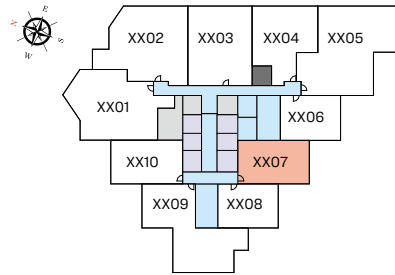
SUITE RANGE = 807.08 - 814.07 SQ.FT.

BALCONY = 87.83 SQ.FT.

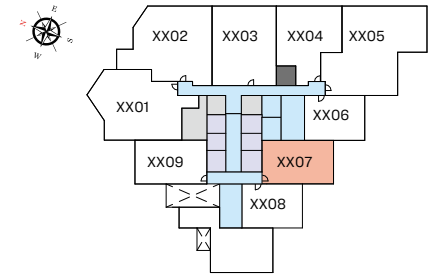
TOTAL RANGE = 894.91 - 901.90 SQ.FT.



LEVEL 08



TYPICAL FLOOR PLAN  
(10,12,14,16,18,20,22,24,26,28,30,32,34)\_LOWER LEVEL



TYPICAL FLOOR PLAN

(07,09,11,13,15,17,19,21,23,25,27,29,31,33,35)\_UPPER LEVEL

UNIT



List of unit numbers with this unit plan:

### VIEWS

Hartland, Amenities  
707, 807

Hartland, Waterfront, Amenities  
907, 1007, 1107, 1207, 1307, 1407, 1507

Hartland, Waterfront  
1607, 1707, 1807, 1907, 2007, 2107, 2207, 2307, 2407, 2507, 2607, 2707, 2807, 2907, 3007, 3107, 3207, 3307, 3407, 3507

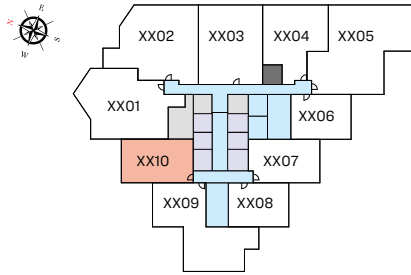
Disclaimer: 1. All dimensions are in metric, measured to wall finishes. 2. All materials, dimensions & drawings are approximate. 3. Information is subject to change without notice, at developer's absolute discretion. 4. Actual area may vary from the stated area. 5. Drawing are not to scale. 6. All images used are for illustrative purpose only and do not represent the actual size, features, specifications, fittings and furnishings. 7. The developer reserves the right to make revisions/ alterations, at its absolute discretion, without any liability whatsoever.

## 1.5 BEDROOM APARTMENT

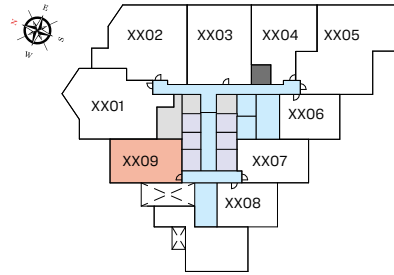
TYPE D1 (with study room + balcony)

### TOTAL SALEABLE AREA

SUITE RANGE = 804.60 - 810.63 SQ.FT.  
BALCONY RANGE = 87.83 - 88.37 SQ.FT.  
TOTAL RANGE = 892.97 - 898.46 SQ.FT.



TYPICAL FLOOR PLAN  
(10,12,14,16,18,20,22,24,26,28,30,32,34)\_LOWER LEVEL



TYPICAL FLOOR PLAN  
(07,09,11,13,15,17,19,21,23,25,27,29,31,33,35)\_UPPER LEVEL

UNIT



List of unit numbers with this unit plan:

### VIEWS

Hartland, Downtown

709, 909, 1010, 1109, 1210, 1309, 1410, 1509, 1610, 1709, 1810, 1909, 2010, 2109, 2210, 2309, 2410, 2509, 2610, 2709, 2810, 2909, 3010, 3109, 3210, 3309, 3410, 3509

Disclaimer: 1. All dimensions are in metric, measured to wall finishes. 2. All materials, dimensions & drawings are approximate. 3. Information is subject to change without notice, at developer's absolute discretion. 4. Actual area may vary from the stated area. 5. Drawing are not to scale. 6. All images used are for illustrative purpose only and do not represent the actual size, features, specifications, fittings and furnishings. 7. The developer reserves the right to make revisions/ alterations, at its absolute discretion, without any liability whatsoever.

# 1.5 BEDROOM APARTMENT

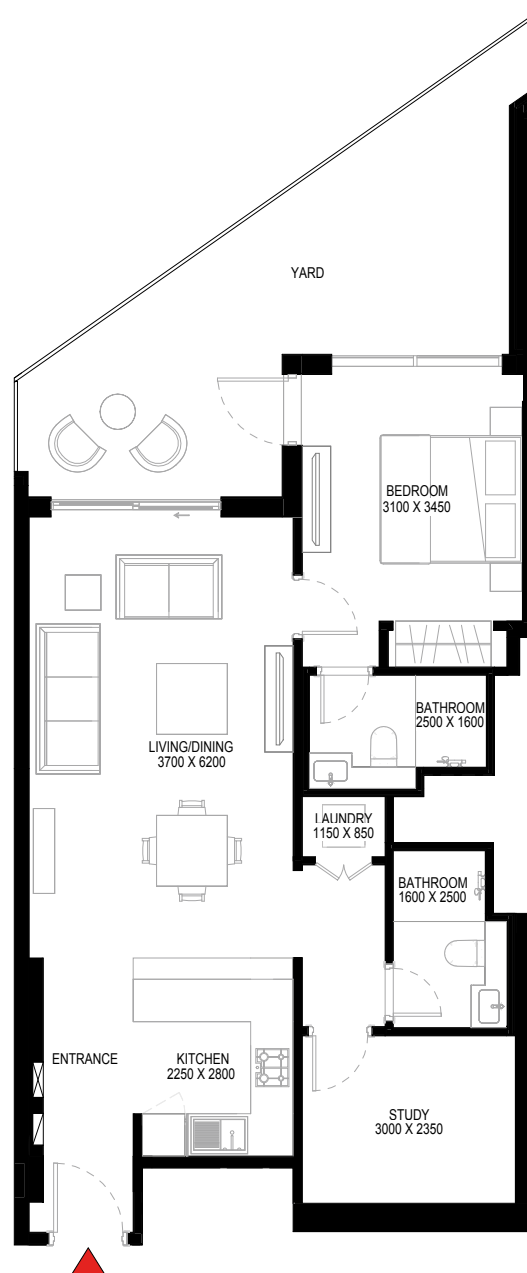
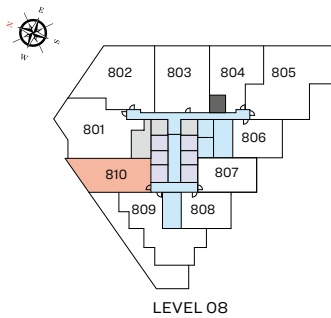
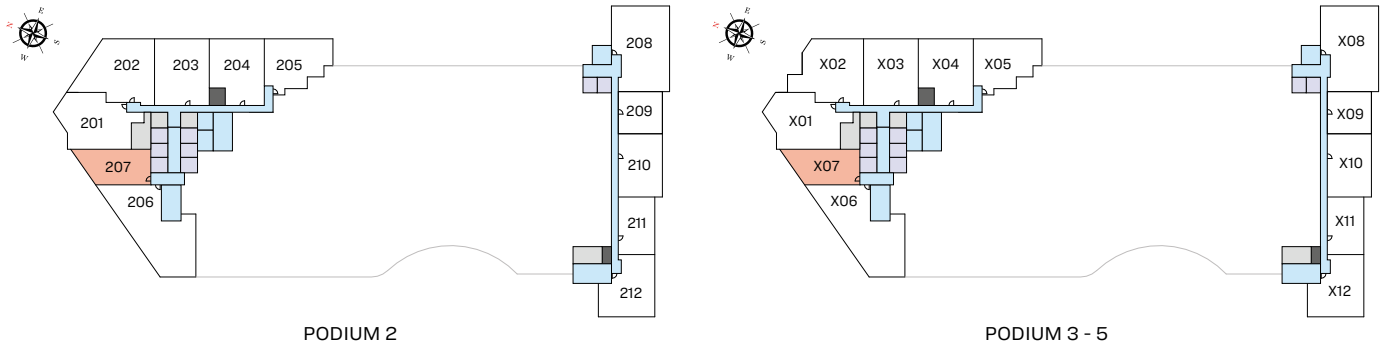
TYPE E (with study room + yard)

## TOTAL SALEABLE AREA

SUITE RANGE = 807.51 - 810.41 SQ.FT.

YARD RANGE = 270.60 - 273.73 SQ.FT.

TOTAL RANGE = 1,081.01 - 1,081.24 SQ.FT.



List of unit numbers with this unit plan:

## VIEWS

Hartland, Downtown  
207, 307, 407, 507, 810

Disclaimer: 1. All dimensions are in metric, measured to wall finishes. 2. All materials, dimensions & drawings are approximate. 3. Information is subject to change without notice, at developer's absolute discretion. 4. Actual area may vary from the stated area. 5. Drawing are not to scale. 6. All images used are for illustrative purpose only and do not represent the actual size, features, specifications, fittings and furnishings. 7. The developer reserves the right to make revisions/ alterations, at its absolute discretion, without any liability whatsoever.

## 1.5 BEDROOM APARTMENT

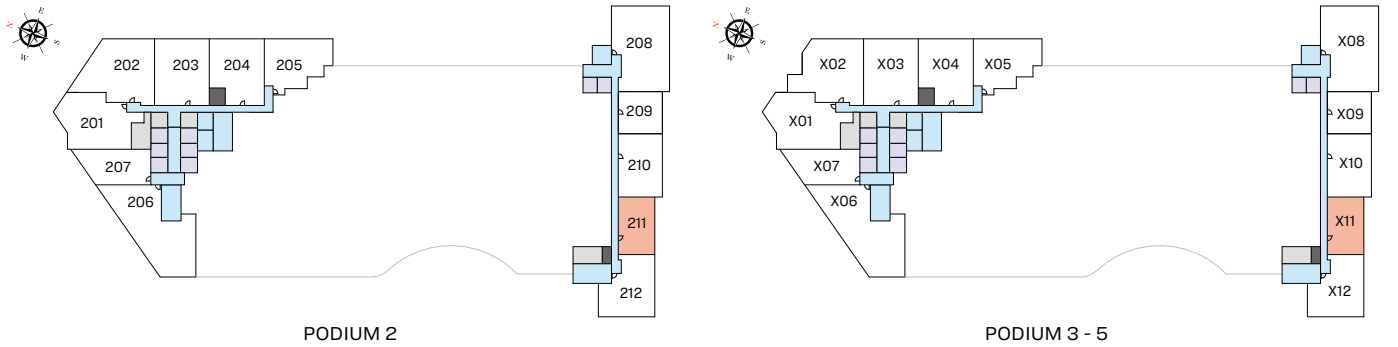
TYPE G (with study room + balcony)

### TOTAL SALEABLE AREA

SUITE = 791.58 SQ.FT.

BALCONY = 68.35 SQ.FT.

TOTAL = 859.93 SQ.FT.



UNIT



List of unit numbers with this unit plan:

### VIEWS

Waterfront

211, 311, 411, 511

Disclaimer: 1. All dimensions are in metric, measured to wall finishes. 2. All materials, dimensions & drawings are approximate. 3. Information is subject to change without notice, at developer's absolute discretion. 4. Actual area may vary from the stated area. 5. Drawing are not to scale. 6. All images used are for illustrative purpose only and do not represent the actual size, features, specifications, fittings and furnishings. 7. The developer reserves the right to make revisions/ alterations, at its absolute discretion, without any liability whatsoever.

## 2 BEDROOM APARTMENT

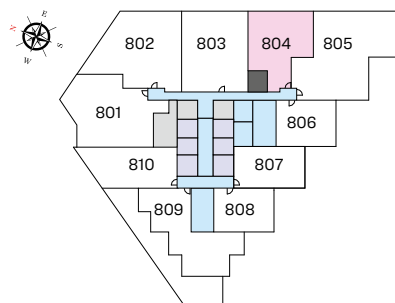
TYPE A (with powder room + balcony)

### TOTAL SALEABLE AREA

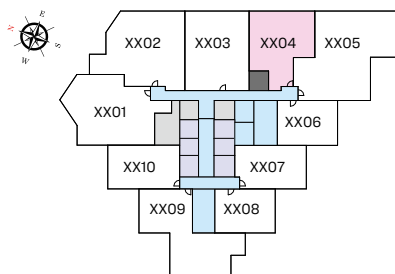
SUITE RANGE = 1,124.83 - 1,125.58 SQ.FT.

BALCONY = 65.98 SQ.FT.

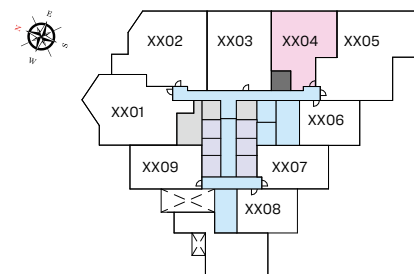
TOTAL RANGE = 1,190.81 - 1,191.56 SQ.FT.



LEVEL 08

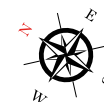


TYPICAL FLOOR PLAN  
(10,12,14,16,18,22,24,26,28,30,32,34)\_LOWER LEVEL



TYPICAL FLOOR PLAN  
(07,09,11,13,15,17,19,21,23,25,27,29,31,33,35)\_UPPER LEVEL

UNIT



List of unit numbers with this unit plan:

### VIEWS

Hartland  
704

Hartland, Waterfront  
804, 904, 1004, 1104, 1204, 1304, 1404, 1504

Hartland, Waterfront, Ras Al Khor Sanctuary  
1604, 1704, 1804, 1904, 2104, 2204, 2304, 2404, 2504, 2604, 2704, 2804, 2904, 3004, 3104, 3204, 3304, 3404, 3504

Disclaimer: 1. All dimensions are in metric, measured to wall finishes. 2. All materials, dimensions & drawings are approximate. 3. Information is subject to change without notice, at developer's absolute discretion. 4. Actual area may vary from the stated area. 5. Drawing are not to scale. 6. All images used are for illustrative purpose only and do not represent the actual size, features, specifications, fittings and furnishings. 7. The developer reserves the right to make revisions/ alterations, at its absolute discretion, without any liability whatsoever.

## 2 BEDROOM APARTMENT

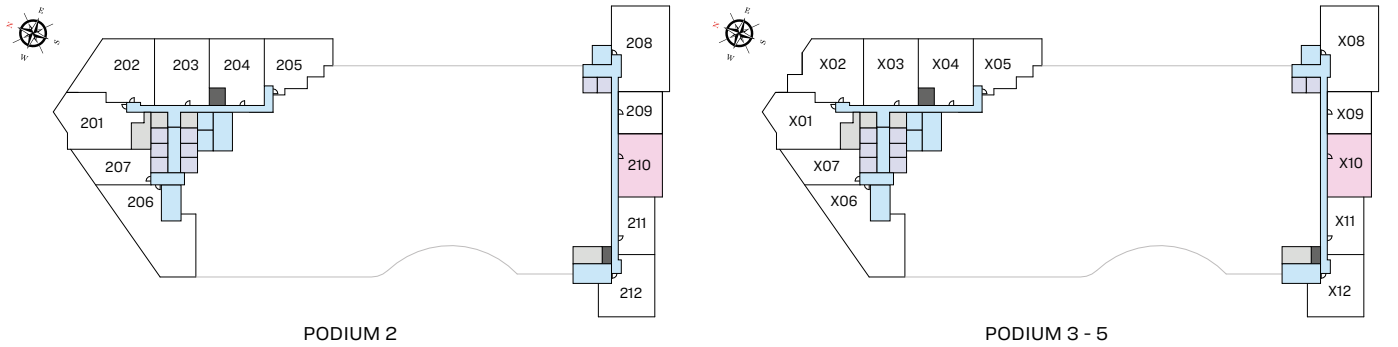
TYPE B (with powder room + balcony)

### TOTAL SALEABLE AREA

SUITE = 1,019.67 SQ.FT.

BALCONY = 131.53 SQ.FT.

TOTAL = 1,151.20 SQ.FT.



UNIT



List of unit numbers with this unit plan:

### VIEWS

Waterfront

210, 310, 410, 510

Disclaimer: 1. All dimensions are in metric, measured to wall finishes. 2. All materials, dimensions & drawings are approximate. 3. Information is subject to change without notice, at developer's absolute discretion. 4. Actual area may vary from the stated area. 5. Drawing are not to scale. 6. All images used are for illustrative purpose only and do not represent the actual size, features, specifications, fittings and furnishings. 7. The developer reserves the right to make revisions/ alterations, at its absolute discretion, without any liability whatsoever.



## 2 BEDROOM APARTMENT

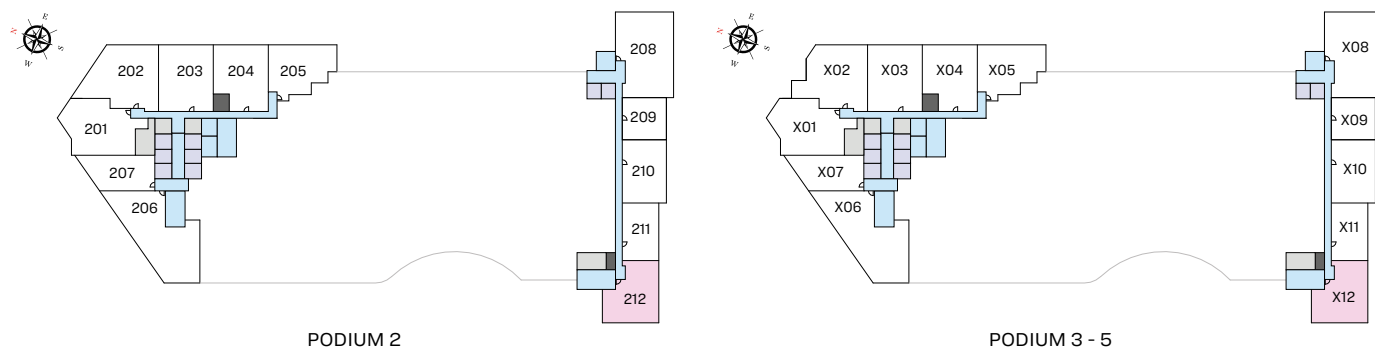
TYPE C (with powder room + balcony)

### TOTAL SALEABLE AREA

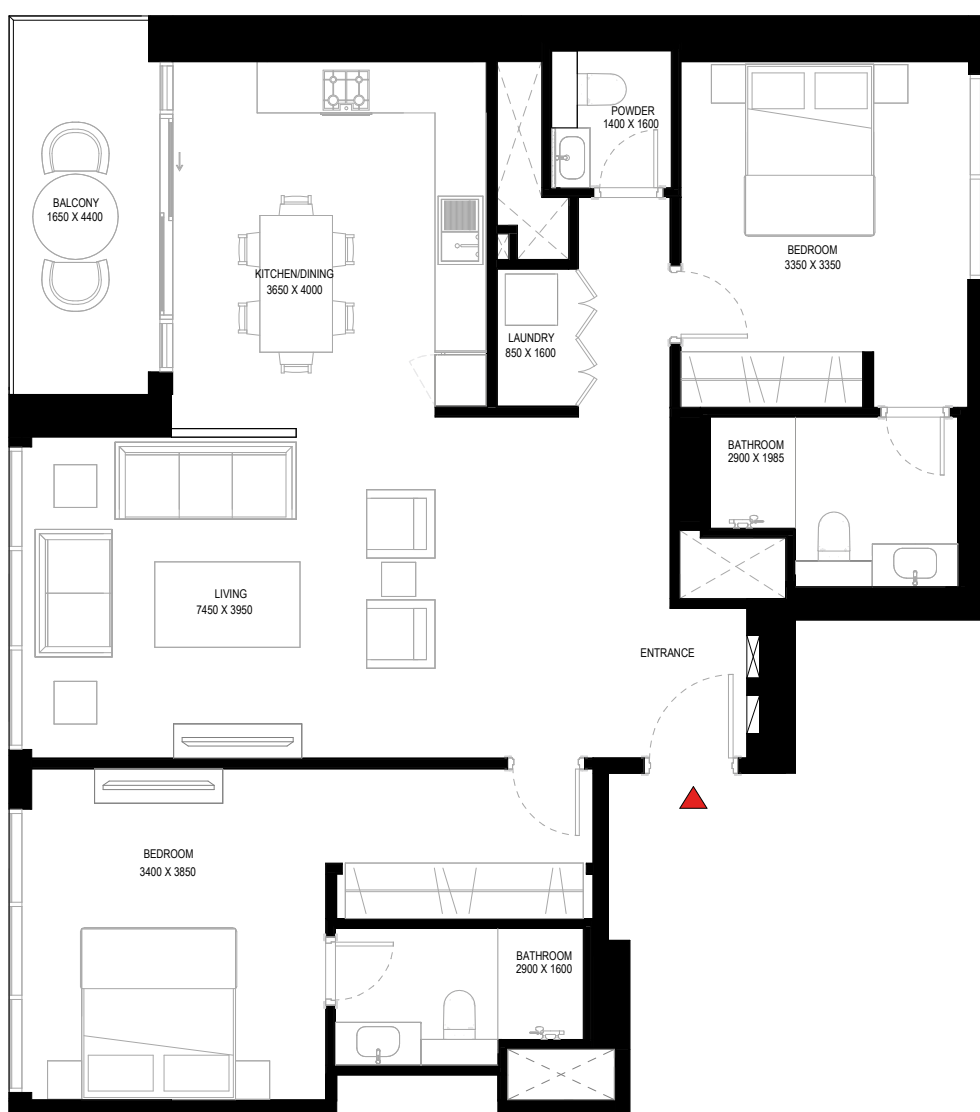
SUITE = 1,177.68 SQ.FT.

BALCONY = 89.77 SQ.FT.

TOTAL = 1,267.45 SQ.FT.



UNIT



List of unit numbers with this unit plan:

### VIEWS

Hartland, Waterfront

212, 312, 412, 512

Disclaimer: 1. All dimensions are in metric, measured to wall finishes. 2. All materials, dimensions & drawings are approximate. 3. Information is subject to change without notice, at developer's absolute discretion. 4. Actual area may vary from the stated area. 5. Drawing are not to scale. 6. All images used are for illustrative purpose only and do not represent the actual size, features, specifications, fittings and furnishings. 7. The developer reserves the right to make revisions/ alterations, at its absolute discretion, without any liability whatsoever.

## 2 BEDROOM APARTMENT

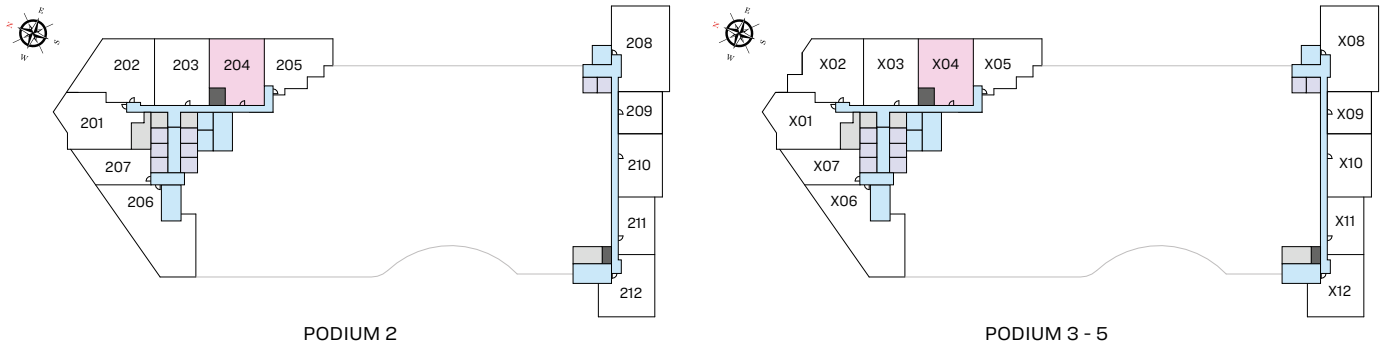
TYPE F (with maid room and powder room + balcony)

### TOTAL SALEABLE AREA

SUITE = 1,304.48 SQ.FT.

BALCONY = 66.20 SQ.FT.

TOTAL = 1,370.68 SQ.FT.



UNIT



List of unit numbers with this unit plan:

### VIEWS

Hartland

204, 304, 404, 504

Disclaimer: 1. All dimensions are in metric, measured to wall finishes. 2. All materials, dimensions & drawings are approximate. 3. Information is subject to change without notice, at developer's absolute discretion. 4. Actual area may vary from the stated area. 5. Drawing are not to scale. 6. All images used are for illustrative purpose only and do not represent the actual size, features, specifications, fittings and furnishings. 7. The developer reserves the right to make revisions/ alterations, at its absolute discretion, without any liability whatsoever.

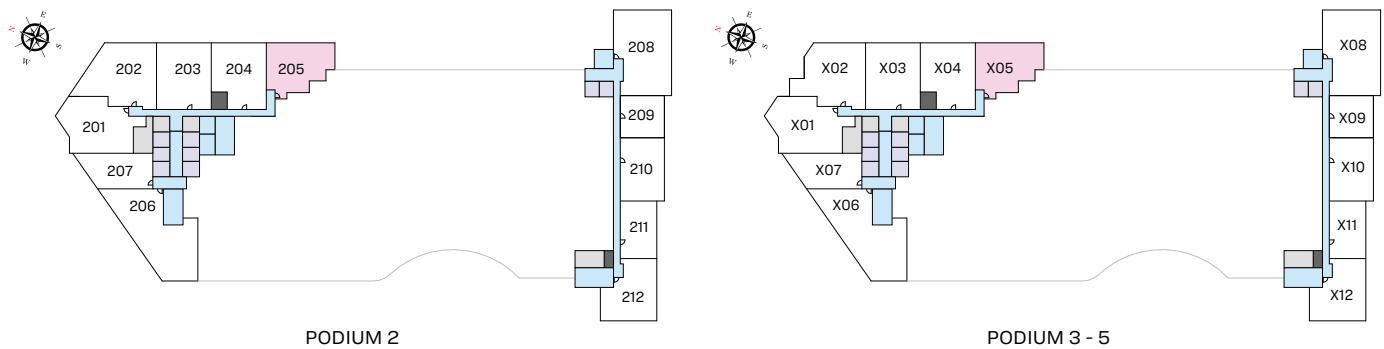
# 2 BEDROOM APARTMENT

TYPE G (with powder room)

## TOTAL SALEABLE AREA

SUITE = 1,279.61 SQ.FT.

TOTAL = 1,279.61 SQ.FT.



PODIUM 2

PODIUM 3 - 5



List of unit numbers with this unit plan:

### VIEWS

Hartland  
205, 305, 405, 505

Disclaimer: 1. All dimensions are in metric, measured to wall finishes. 2. All materials, dimensions & drawings are approximate. 3. Information is subject to change without notice, at developer's absolute discretion. 4. Actual area may vary from the stated area. 5. Drawing are not to scale. 6. All images used are for illustrative purpose only and do not represent the actual size, features, specifications, fittings and furnishings. 7. The developer reserves the right to make revisions/ alterations, at its absolute discretion, without any liability whatsoever.

# 2.5 BEDROOM APARTMENT

TYPE D (with study room, maid room and powder room + balcony)

UNIT



List of unit numbers with this unit plan:

## VIEWS

**Hartland**  
201, 301, 401, 501, 701, 801

**Hartland, Downtown**  
1001, 1101, 1201, 1301, 1401, 1501

**Hartland, Downtown, Ras Al Khor Sanctuary**  
1601, 1701, 1801, 2001, 2101, 2201, 2301, 2401, 2501, 2601, 2701, 2801, 3001, 3101, 3201, 3301, 3401, 3501

Disclaimer: 1. All dimensions are in metric, measured to wall finishes. 2. All materials, dimensions & drawings are approximate. 3. Information is subject to change without notice, at developer's absolute discretion. 4. Actual area may vary from the stated area. 5. Drawing are not to scale. 6. All images used are for illustrative purpose only and do not represent the actual size, features, specifications, fittings and furnishings. 7. The developer reserves the right to make revisions/ alterations, at its absolute discretion, without any liability whatsoever.

## 2.5 BEDROOM APARTMENT

TYPE D (with study room, maid room and powder room + balcony)

### TOTAL SALEABLE AREA

SUITE RANGE = 1,455.39 - 1,455.93 SQ.FT.

BALCONY = 154.79 SQ.FT.

TOTAL RANGE = 1,610.18 - 1,610.72 SQ.FT.



List of unit numbers with this unit plan:

### VIEWS

Hartland

201, 301, 401, 501, 701, 801

Hartland, Downtown

1001, 1101, 1201, 1301, 1401, 1501

Hartland, Downtown, Ras Al Khor Sanctuary

1601, 1701, 1801, 2001, 2101, 2201, 2301, 2401, 2501, 2601, 2701, 2801, 3001, 3101, 3201, 3301, 3401, 3501

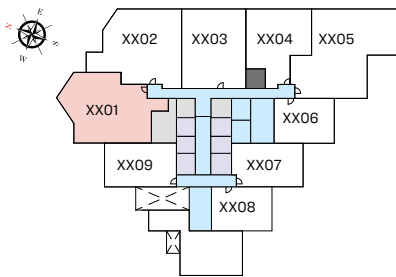
Disclaimer: 1. All dimensions are in metric, measured to wall finishes. 2. All materials, dimensions & drawings are approximate. 3. Information is subject to change without notice, at developer's absolute discretion. 4. Actual area may vary from the stated area. 5. Drawing are not to scale. 6. All images used are for illustrative purpose only and do not represent the actual size, features, specifications, fittings and furnishings. 7. The developer reserves the right to make revisions/ alterations, at its absolute discretion, without any liability whatsoever.

# 2.5 BEDROOM APARTMENT

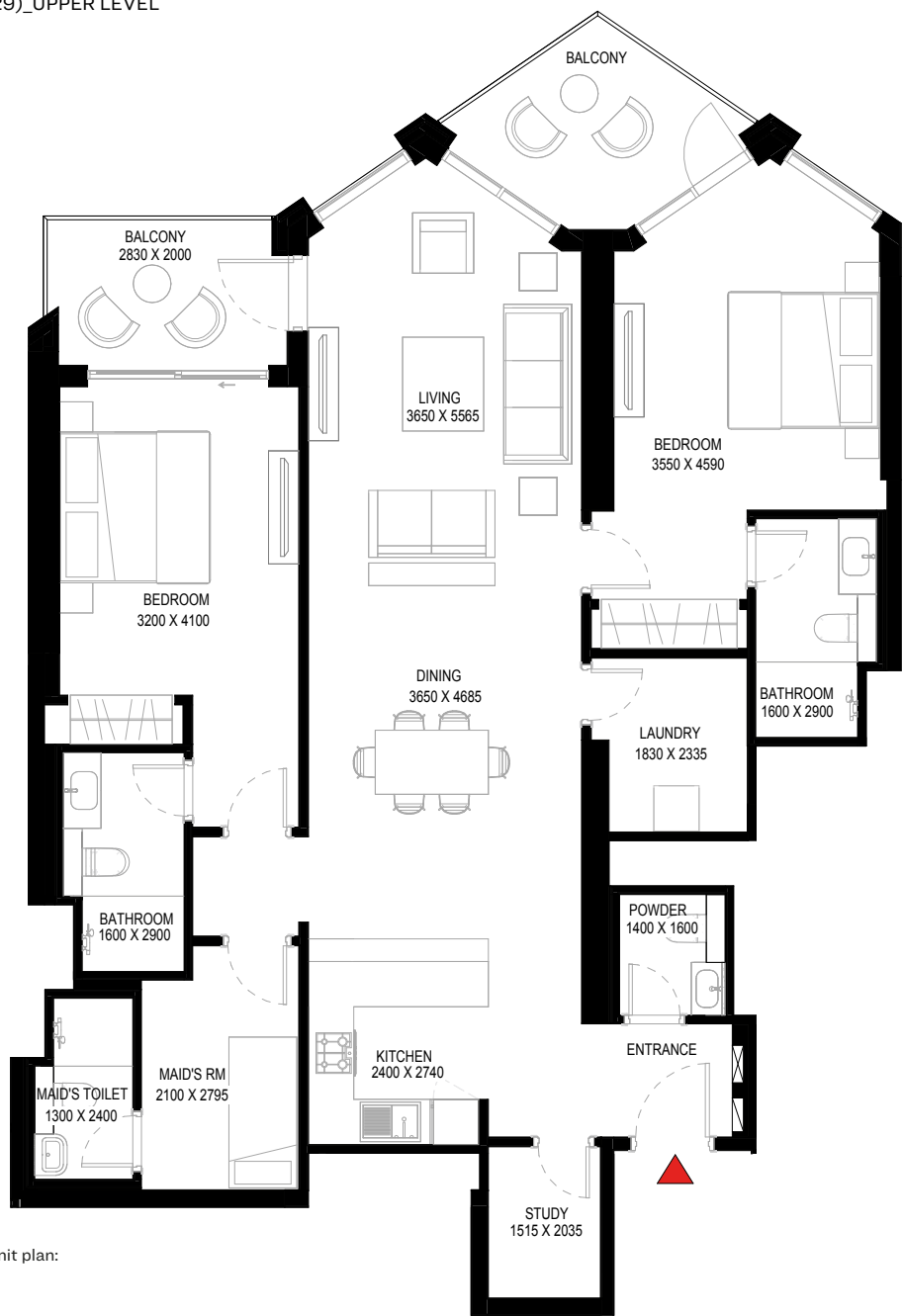
TYPE D1 (with study room, maid room and powder room + balcony)

## TOTAL SALEABLE AREA

SUITE = 1,406.09 SQ.FT.  
BALCONY = 154.79 SQ.FT.  
TOTAL = 1,560.88 SQ.FT.



TYPICAL FLOOR PLAN  
(09,19,29)\_UPPER LEVEL



List of unit numbers with this unit plan:

### VIEWS

Hartland  
901

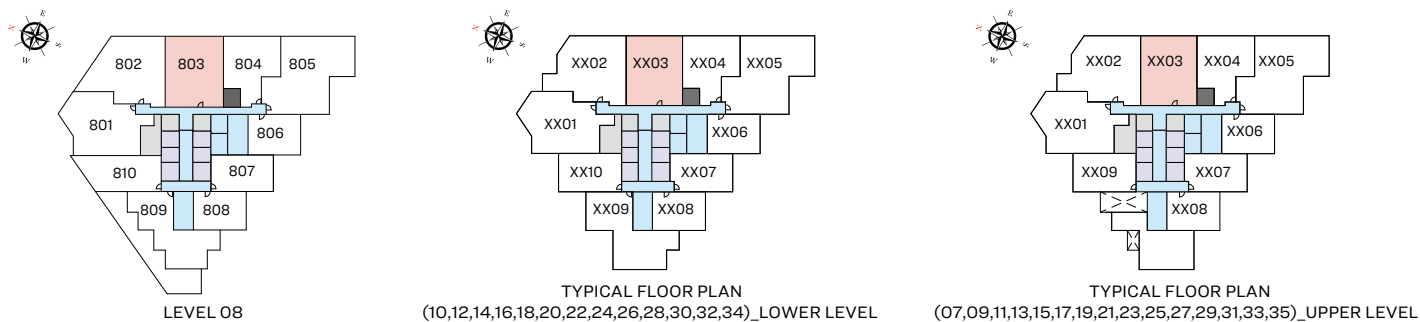
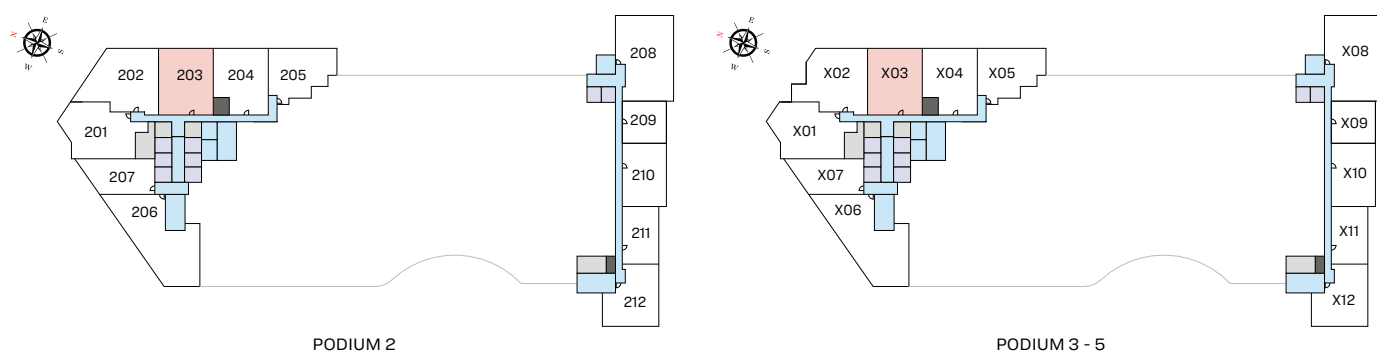
Hartland, Downtown, Ras Al Khor Sanctuary  
1901, 2901

Disclaimer: 1. All dimensions are in metric, measured to wall finishes. 2. All materials, dimensions & drawings are approximate. 3. Information is subject to change without notice, at developer's absolute discretion. 4. Actual area may vary from the stated area. 5. Drawing are not to scale. 6. All images used are for illustrative purpose only and do not represent the actual size, features, specifications, fittings and furnishings. 7. The developer reserves the right to make revisions/ alterations, at its absolute discretion, without any liability whatsoever.

## 2.5 BEDROOM APARTMENT

TYPE E (with study room, maid room and powder room + balcony)

UNIT



List of unit numbers with this unit plan:

### VIEWS

Hartland

203, 303, 403, 503, 703

Hartland, Waterfront

803, 903, 1003, 1103, 1203, 1303, 1403, 1503

Hartland, Waterfront, Ras Al Khor Sanctuary

1603, 1703, 1803, 1903, 2003, 2103, 2203, 2303, 2403, 2503, 2603, 2703, 2803, 2903, 3003, 3103, 3203, 3303, 3403, 3503

Disclaimer: 1. All dimensions are in metric, measured to wall finishes. 2. All materials, dimensions & drawings are approximate. 3. Information is subject to change without notice, at developer's absolute discretion. 4. Actual area may vary from the stated area. 5. Drawing are not to scale. 6. All images used are for illustrative purpose only and do not represent the actual size, features, specifications, fittings and furnishings. 7. The developer reserves the right to make revisions/ alterations, at its absolute discretion, without any liability whatsoever.

## 2.5 BEDROOM APARTMENT

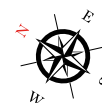
TYPE E (with study room, maid room and powder room + balcony)

### TOTAL SALEABLE AREA

SUITE = 1,437.95 SQ.FT.

BALCONY = 63.83 SQ.FT.

TOTAL = 1,501.78 SQ.FT.



List of unit numbers with this unit plan:

### VIEWS

Hartland

203, 303, 403, 503, 703

Hartland, Waterfront

803, 903, 1003, 1103, 1203, 1303, 1403, 1503

Hartland, Waterfront, Ras Al Khor Sanctuary

1603, 1703, 1803, 1903, 2003, 2103, 2203, 2303, 2403, 2503, 2603, 2703, 2803, 2903, 3003, 3103, 3203, 3303, 3403, 3503

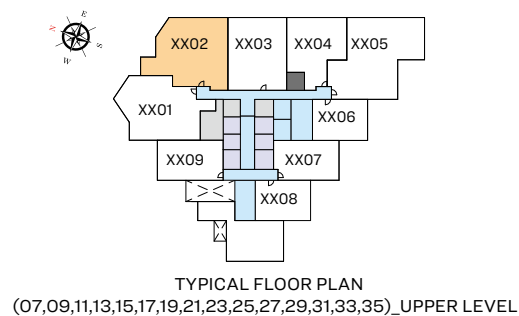
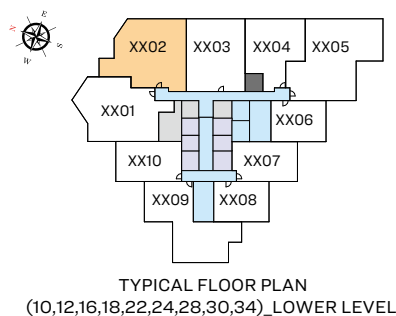
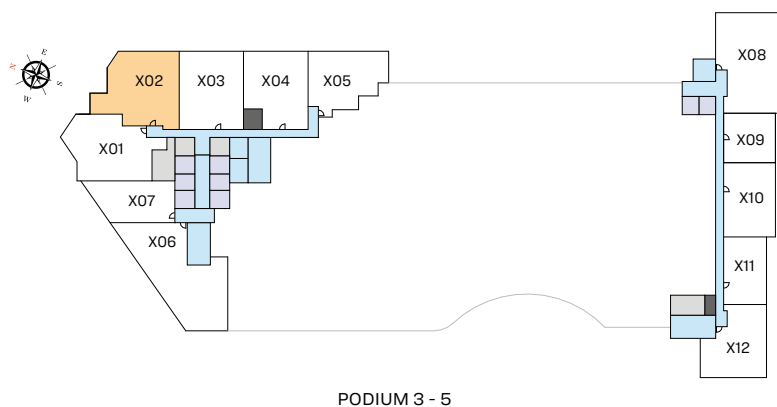
Disclaimer: 1. All dimensions are in metric, measured to wall finishes. 2. All materials, dimensions & drawings are approximate. 3. Information is subject to change without notice, at developer's absolute discretion. 4. Actual area may vary from the stated area. 5. Drawing are not to scale. 6. All images used are for illustrative purpose only and do not represent the actual size, features, specifications, fittings and furnishings. 7. The developer reserves the right to make revisions/ alterations, at its absolute discretion, without any liability whatsoever.



## 3 BEDROOM APARTMENT

TYPE A (with maid room and powder room + balcony)

UNIT



List of unit numbers with this unit plan:

### VIEWS

#### Hartland

302, 402, 502, 702

#### Hartland, Waterfront

902, 1002, 1202, 1102, 1302, 1502

#### Hartland, Waterfront, Ras Al Khor Sanctuary

1602, 1702, 1802, 1902, 2102, 2202, 2302, 2402, 2502, 2702, 2802, 2902, 3002, 3102, 3302, 3402, 3502

Disclaimer: 1. All dimensions are in metric, measured to wall finishes. 2. All materials, dimensions & drawings are approximate. 3. Information is subject to change without notice, at developer's absolute discretion. 4. Actual area may vary from the stated area. 5. Drawing are not to scale. 6. All images used are for illustrative purpose only and do not represent the actual size, features, specifications, fittings and furnishings. 7. The developer reserves the right to make revisions/ alterations, at its absolute discretion, without any liability whatsoever.

## 3 BEDROOM APARTMENT

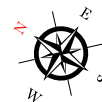
TYPE A (with maid room and powder room + balcony)

### TOTAL SALEABLE AREA

SUITE = 1,659.47 SQ.FT.

BALCONY = 87.62 SQ.FT.

TOTAL = 1,747.09 SQ.FT.



List of unit numbers with this unit plan:

### VIEWS

Hartland

302, 402, 502, 702

Hartland, Waterfront

902, 1002, 1202, 1102, 1302, 1502

Hartland, Waterfront, Ras Al Khor Sanctuary

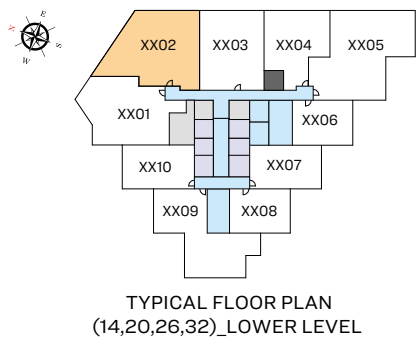
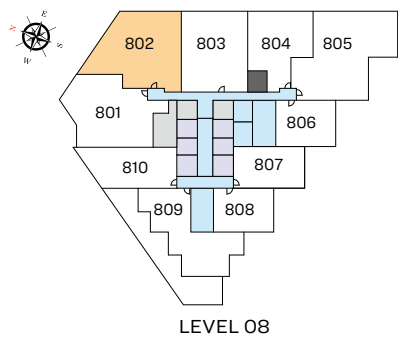
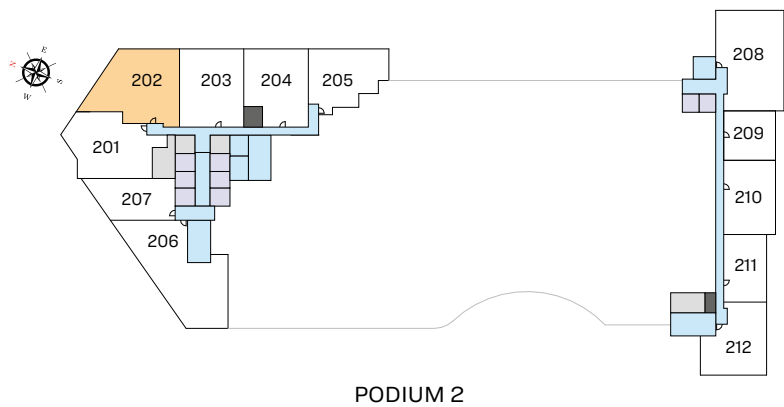
1602, 1702, 1802, 1902, 2102, 2202, 2302, 2402, 2502, 2702, 2802, 2902, 3002, 3102, 3302, 3402, 3502

Disclaimer: 1. All dimensions are in metric, measured to wall finishes. 2. All materials, dimensions & drawings are approximate. 3. Information is subject to change without notice, at developer's absolute discretion. 4. Actual area may vary from the stated area. 5. Drawing are not to scale. 6. All images used are for illustrative purpose only and do not represent the actual size, features, specifications, fittings and furnishings. 7. The developer reserves the right to make revisions/ alterations, at its absolute discretion, without any liability whatsoever.

# 3 BEDROOM APARTMENT

TYPE B (with maid room and powder room + balcony)

UNIT



List of unit numbers with this unit plan:

## VIEWS

Hartland  
202

Hartland, Waterfront  
802, 1402

Hartland, Waterfront, Ras Al Khor Sanctuary  
2002, 2602, 3202

Disclaimer: 1. All dimensions are in metric, measured to wall finishes. 2. All materials, dimensions & drawings are approximate. 3. Information is subject to change without notice, at developer's absolute discretion. 4. Actual area may vary from the stated area. 5. Drawing are not to scale. 6. All images used are for illustrative purpose only and do not represent the actual size, features, specifications, fittings and furnishings. 7. The developer reserves the right to make revisions/ alterations, at its absolute discretion, without any liability whatsoever.

## 3 BEDROOM APARTMENT

TYPE B (with maid room and powder room + balcony)

### TOTAL SALEABLE AREA

SUITE = 1,659.47 SQ.FT.

BALCONY = 196.01 SQ.FT.

TOTAL = 1,855.48 SQ.FT.



List of unit numbers with this unit plan:

### VIEWS

Hartland  
202

Hartland, Waterfront  
802, 1402

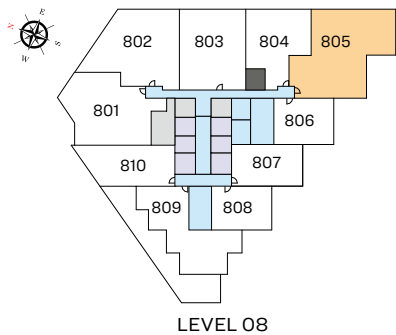
Hartland, Waterfront, Ras Al Khor Sanctuary  
2002, 2602, 3202

Disclaimer: 1. All dimensions are in metric, measured to wall finishes. 2. All materials, dimensions & drawings are approximate. 3. Information is subject to change without notice, at developer's absolute discretion. 4. Actual area may vary from the stated area. 5. Drawing are not to scale. 6. All images used are for illustrative purpose only and do not represent the actual size, features, specifications, fittings and furnishings. 7. The developer reserves the right to make revisions/ alterations, at its absolute discretion, without any liability whatsoever.

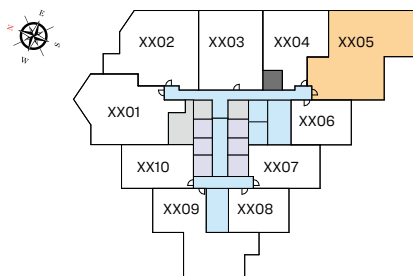
# 3 BEDROOM APARTMENT

TYPE C (with maid room and powder room + balcony)

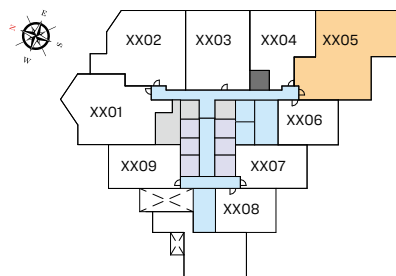
UNIT



LEVEL 08



TYPICAL FLOOR PLAN  
(10,12,14,16,18,20,22,24,26,28,30,32,34)\_LOWER LEVEL



TYPICAL FLOOR PLAN  
(07,09,11,13,15,17,19,21,23,25,27,29,31,33,35)\_UPPER LEVEL

List of unit numbers with this unit plan:

## VIEWS

Hartland, Amenities  
705, 805

Hartland, Waterfront, Amenities  
905, 1005, 1105, 1205, 1305, 1405, 1505

Hartland, Waterfront, Ras Al Khor Sanctuary  
1605, 1705, 1805, 1905, 2005, 2105, 2205, 2305, 2405, 2505, 2605, 2705, 2805, 2905, 3005, 3105, 3205, 3305, 3405, 3505

Disclaimer: 1. All dimensions are in metric, measured to wall finishes. 2. All materials, dimensions & drawings are approximate. 3. Information is subject to change without notice, at developer's absolute discretion. 4. Actual area may vary from the stated area. 5. Drawing are not to scale. 6. All images used are for illustrative purpose only and do not represent the actual size, features, specifications, fittings and furnishings. 7. The developer reserves the right to make revisions/ alterations, at its absolute discretion, without any liability whatsoever.

## 3 BEDROOM APARTMENT

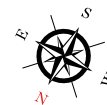
TYPE C (with maid room and powder room + balcony)

### TOTAL SALEABLE AREA

SUITE = 1,914.68 SQ.FT.

BALCONY = 155.43 SQ.FT.

TOTAL = 2,070.11 SQ.FT.



List of unit numbers with this unit plan:

### VIEWS

Hartland, Amenities  
705, 805

Hartland, Waterfront, Amenities  
905, 1005, 1105, 1205, 1305, 1405, 1505

Hartland, Waterfront, Ras Al Khor Sanctuary  
1605, 1705, 1805, 1905, 2005, 2105, 2205, 2305, 2405, 2505, 2605, 2705, 2805, 2905, 3005, 3105, 3205, 3305, 3405, 3505

Disclaimer: 1. All dimensions are in metric, measured to wall finishes. 2. All materials, dimensions & drawings are approximate. 3. Information is subject to change without notice, at developer's absolute discretion. 4. Actual area may vary from the stated area. 5. Drawing are not to scale. 6. All images used are for illustrative purpose only and do not represent the actual size, features, specifications, fittings and furnishings. 7. The developer reserves the right to make revisions/ alterations, at its absolute discretion, without any liability whatsoever.

## 3 BEDROOM APARTMENT

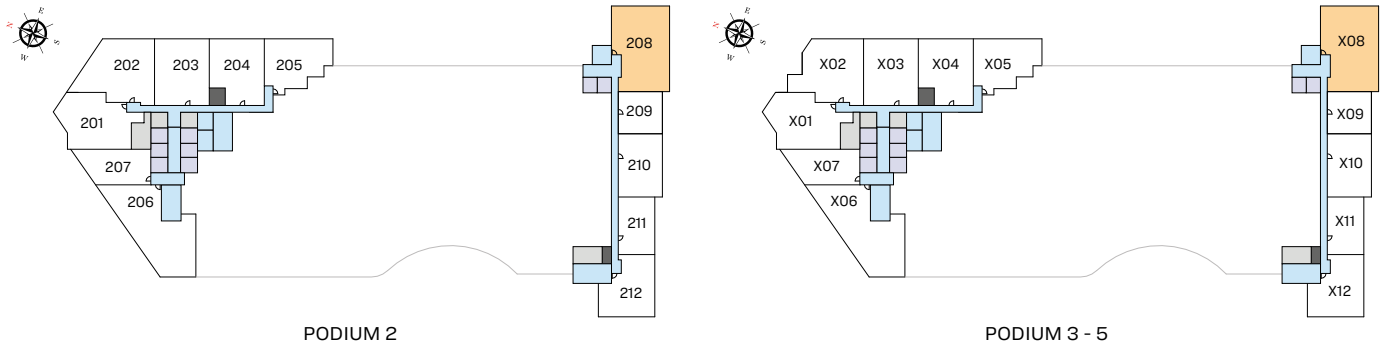
TYPE E (with maid room and powder room + yard)

### TOTAL SALEABLE AREA

SUITE = 1,640.31 SQ.FT.

YARD = 369.96 SQ.FT.

TOTAL = 2,010.27 SQ.FT.



UNIT



List of unit numbers with this unit plan:

### VIEWS

Hartland, Waterfront

208, 308, 408, 508

Disclaimer: 1. All dimensions are in metric, measured to wall finishes. 2. All materials, dimensions & drawings are approximate. 3. Information is subject to change without notice, at developer's absolute discretion. 4. Actual area may vary from the stated area. 5. Drawing are not to scale. 6. All images used are for illustrative purpose only and do not represent the actual size, features, specifications, fittings and furnishings. 7. The developer reserves the right to make revisions/ alterations, at its absolute discretion, without any liability whatsoever.

## 3 BEDROOM APARTMENT

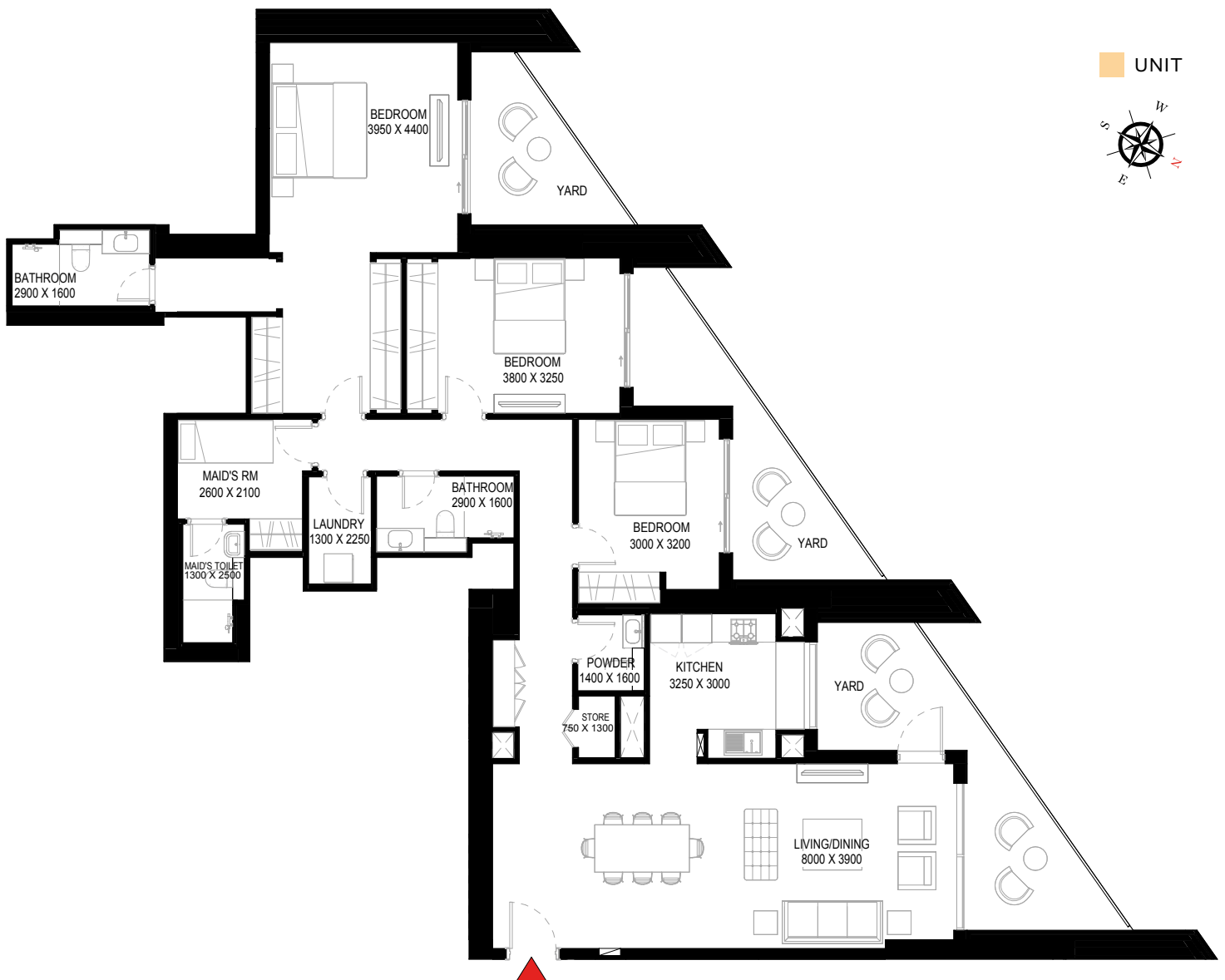
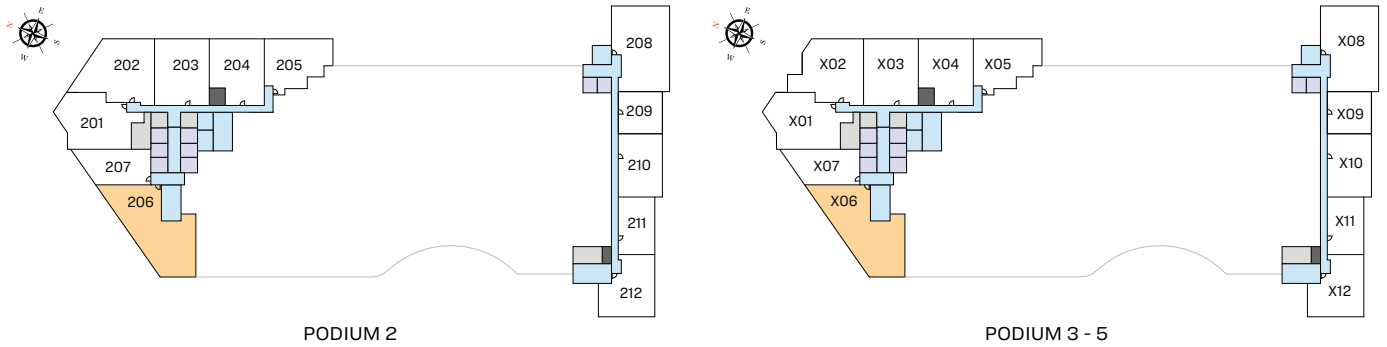
TYPE F (with maid room and powder room + yard)

### TOTAL SALEABLE AREA

SUITE = 1,820.07 SQ.FT.

YARD = 491.59 SQ.FT.

TOTAL = 2,311.66 SQ.FT.



List of unit numbers with this unit plan:

### VIEWS

Hartland, Downtown  
206, 306, 406, 506

Disclaimer: 1. All dimensions are in metric, measured to wall finishes. 2. All materials, dimensions & drawings are approximate. 3. Information is subject to change without notice, at developer's absolute discretion. 4. Actual area may vary from the stated area. 5. Drawing are not to scale. 6. All images used are for illustrative purpose only and do not represent the actual size, features, specifications, fittings and furnishings. 7. The developer reserves the right to make revisions/ alterations, at its absolute discretion, without any liability whatsoever.



4 BEDROOM DUPLEX APARTMENT

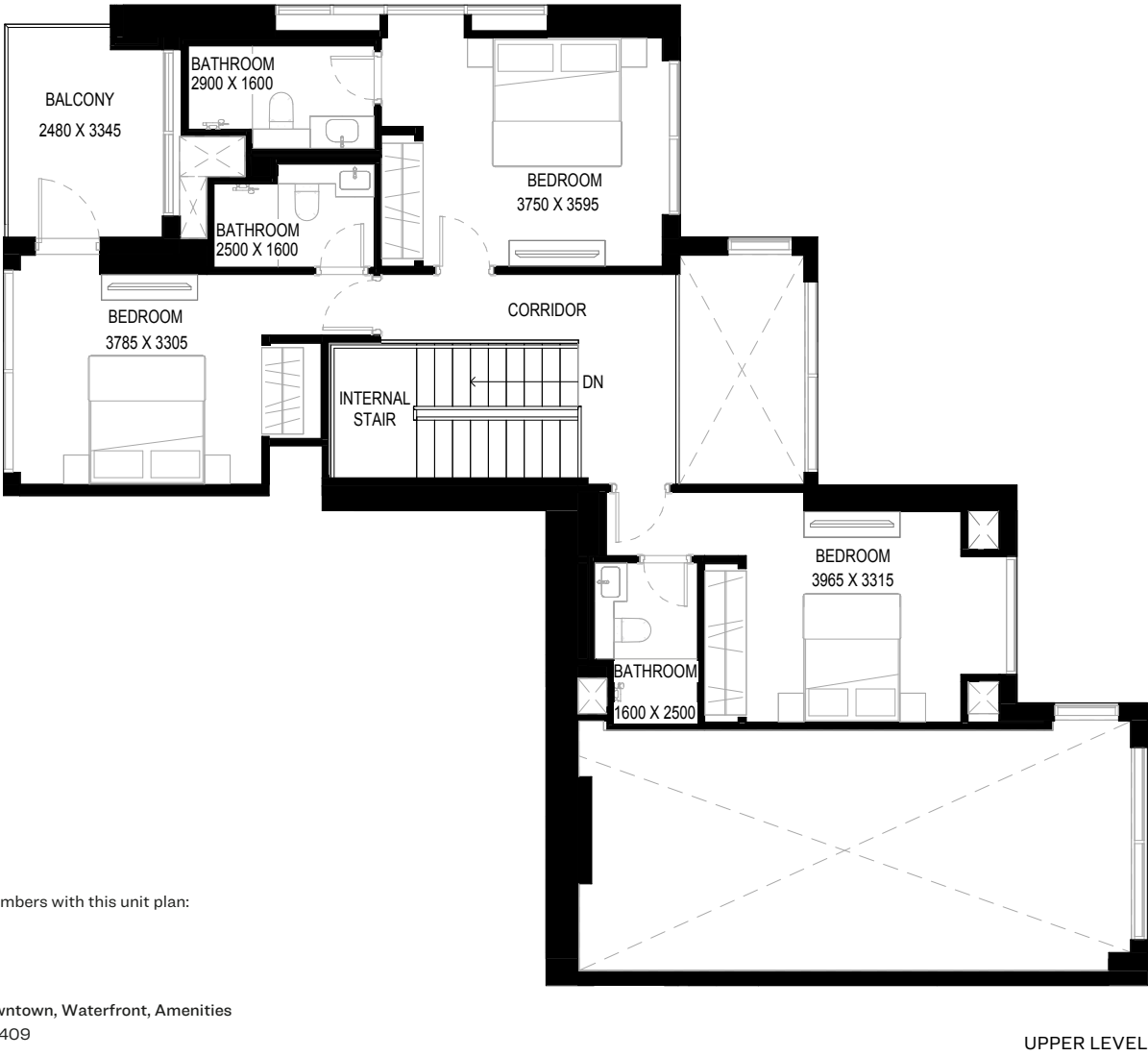
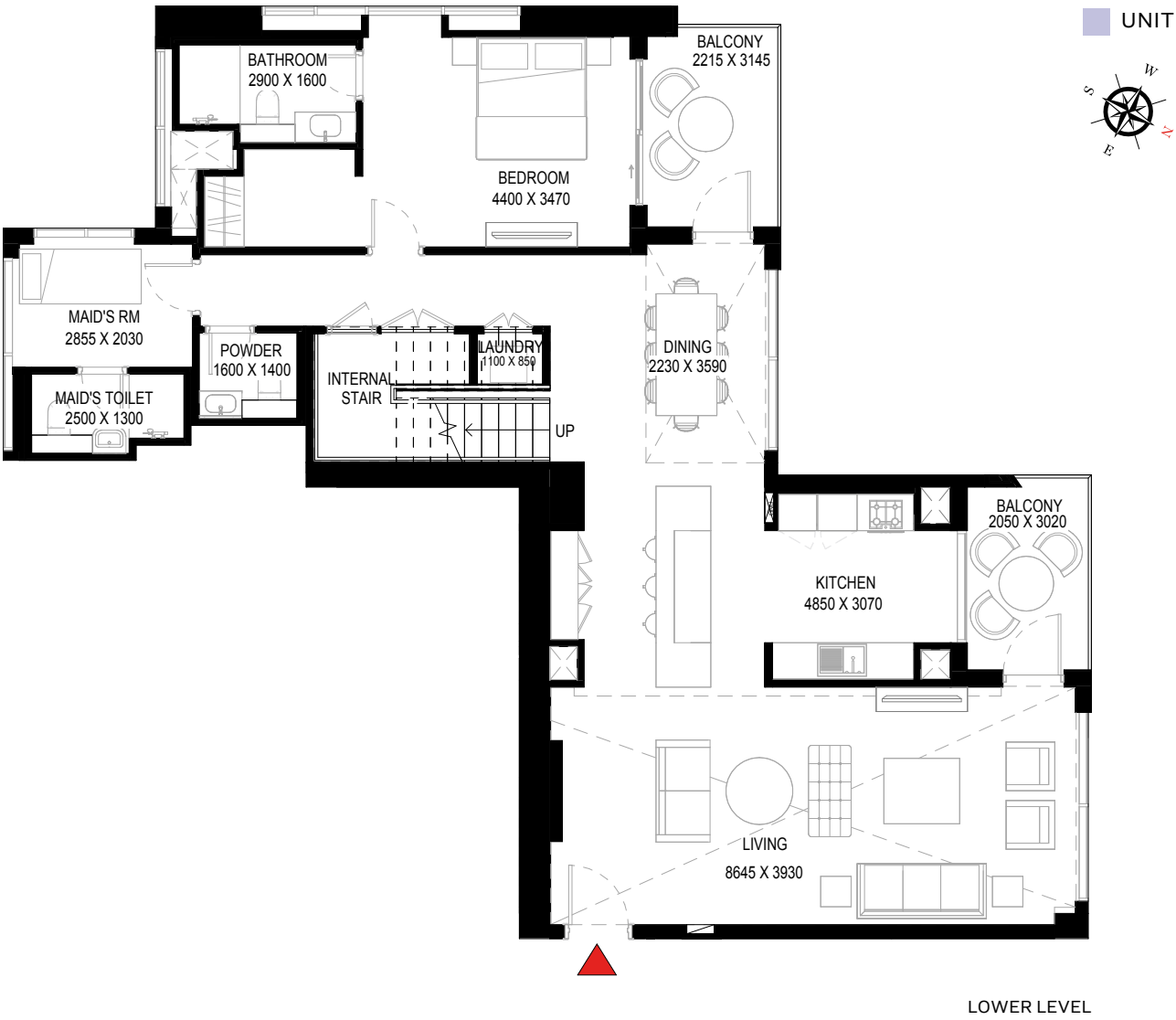
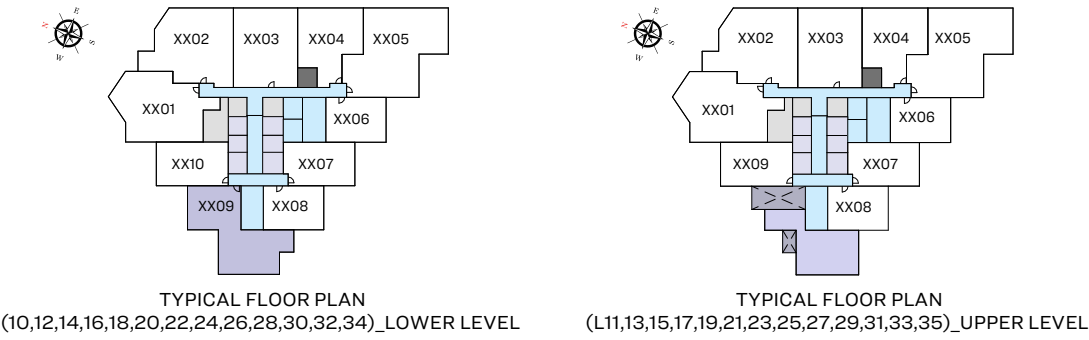
TYPE A (with maid room and powder room + balcony)

TOTAL SALEABLE AREA

SUITE = 2,473.65 SQ.FT.

BALCONY = 251.01 SQ.FT.

TOTAL = 2,724.66 SQ.FT.



List of unit numbers with this unit plan:

VIEWS

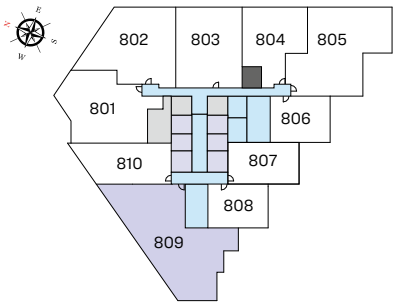
Hartland, Downtown, Waterfront, Amenities  
1009, 1209, 1409

Hartland, Downtown, Waterfront  
1609, 1809, 2009, 2209, 2409, 2609, 2809, 3009, 3209, 3409

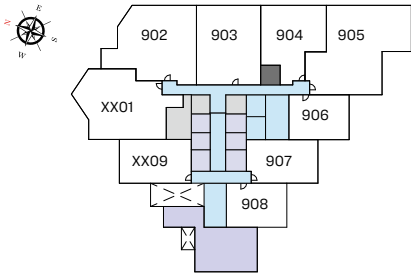
Disclaimer: 1. All dimensions are in metric, measured to wall finishes. 2. All materials, dimensions & drawings are approximate. 3. Information is subject to change without notice, at developer's absolute discretion. 4. Actual area may vary from the stated area. 5. Drawing are not to scale. 6. All images used are for illustrative purpose only and do not represent the actual size, features, specifications, fittings and furnishings. 7. The developer reserves the right to make revisions/ alterations, at its absolute discretion, without any liability whatsoever.

4 BEDROOM DUPLEX APARTMENT  
TYPE C (with maid room and powder room + yard)

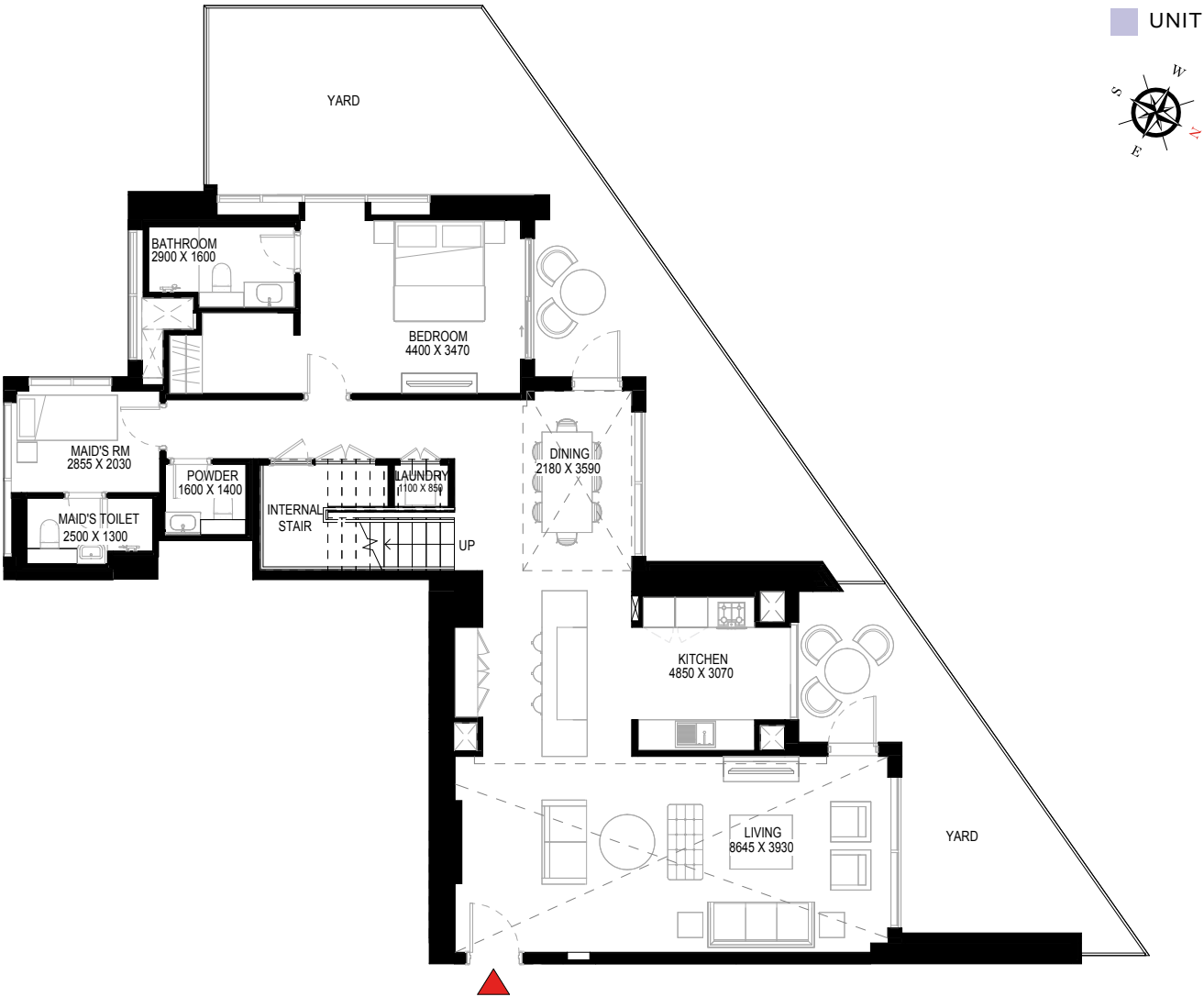
TOTAL SALEABLE AREA  
SUITE = 2,487.65 SQ.FT.  
YARD = 907.29 SQ.FT.  
TOTAL = 3,394.94 SQ.FT.



LEVEL 08\_LOWER LEVEL



LEVEL 09\_UPPER LEVEL



LOWER LEVEL



UPPER LEVEL

List of unit numbers with this unit plan:

VIEWS

Hartland, Downtown, Amenities  
809

Disclaimer: 1. All dimensions are in metric, measured to wall finishes. 2. All materials, dimensions & drawings are approximate. 3. Information is subject to change without notice, at developer's absolute discretion. 4. Actual area may vary from the stated area. 5. Drawing are not to scale. 6. All images used are for illustrative purpose only and do not represent the actual size, features, specifications, fittings and furnishings. 7. The developer reserves the right to make revisions/ alterations, at its absolute discretion, without any liability whatsoever.