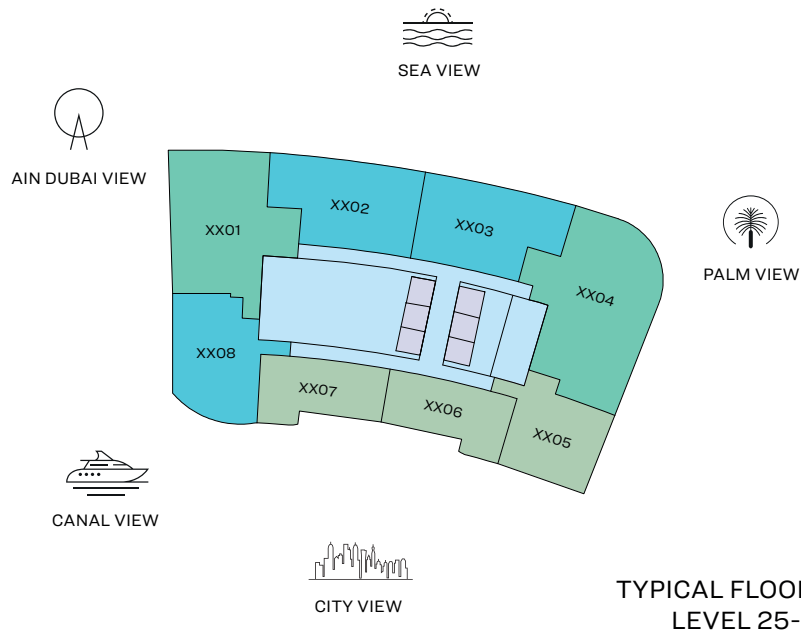
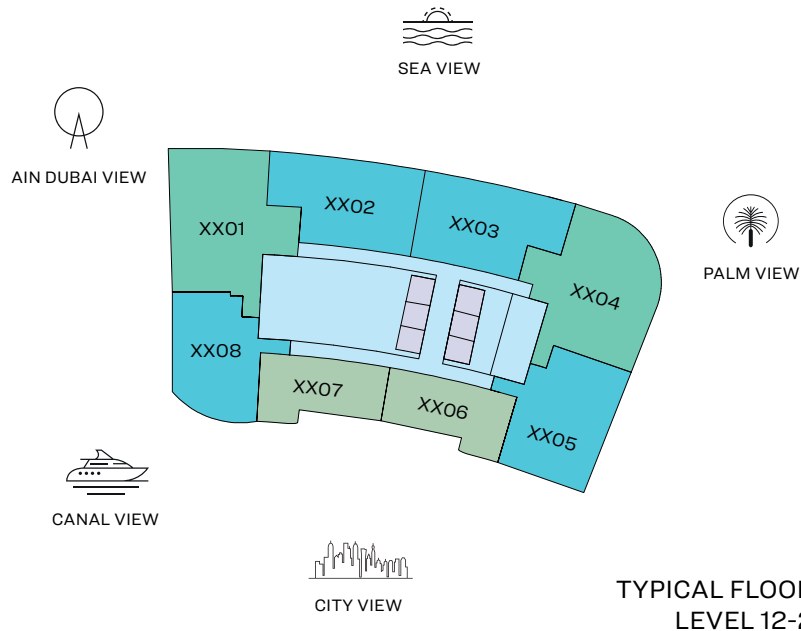
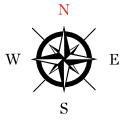


FLOOR PLAN LAYOUT

TOWER A



- 1 BED UNIT
- 3 BED UNIT
- LOBBIES, CORRIDORS & STAIRS
- 2 BED UNIT
- LIFTS

Disclaimer: 1. All dimensions are in metric, measured to wall finishes. 2. All materials, dimensions & drawings are approximate. 3. Information is subject to change without notice, at developer's absolute discretion. 4. Actual area may vary from the stated area. 5. Drawing are not to scale. 6. All images used are for illustrative purpose only and do not represent the actual size, features, specifications, fittings and furnishings. 7. The developer reserves the right to make revisions/ alterations, at its absolute discretion, without any liability whatsoever.

3 BEDROOM APARTMENT

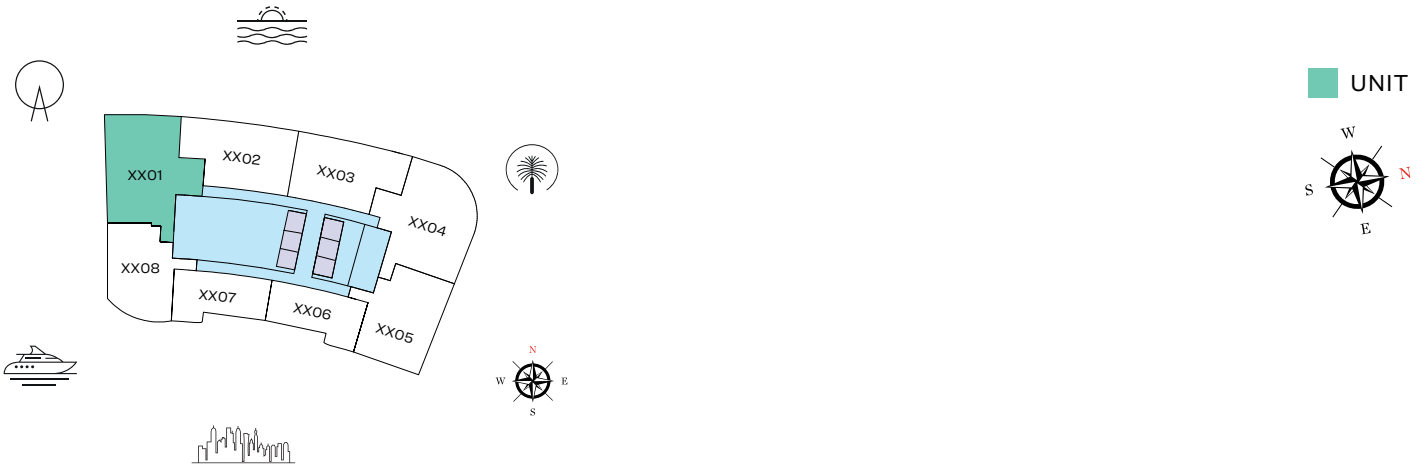
TYPE A (with maid room and powder room + balcony)

TOTAL SALEABLE AREA

SUITE = 1,852.47 SQ.FT.

BALCONY = 176.53 SQ.FT.

TOTAL = 2,029.00 SQ.FT.



TYPICAL FLOOR PLAN
LEVEL 12-23 & 25-32



List of unit numbers with this unit plan:

VIEWS

Blue waters, Ain Dubai, Palm Jumeirah, Harbour, JBR Beach, Marina, Sea, Marina Skyline, Skydive

1201, 1301, 1401, 1501, 1601, 1701, 1801, 1901, 2001, 2101, 2201, 2301, 2501, 2601, 2701, 2801, 2901, 3001, 3101, 3201

Disclaimer: 1. All dimensions are in metric, measured to wall finishes. 2. All materials, dimensions & drawings are approximate. 3. Information is subject to change without notice, at developer's absolute discretion. 4. Actual area may vary from the stated area. 5. Drawing are not to scale. 6. All images used are for illustrative purpose only and do not represent the actual size, features, specifications, fittings and furnishings. 7. The developer reserves the right to make revisions/ alterations, at its absolute discretion, without any liability whatsoever.

3 BEDROOM APARTMENT

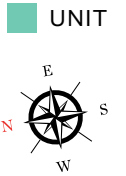
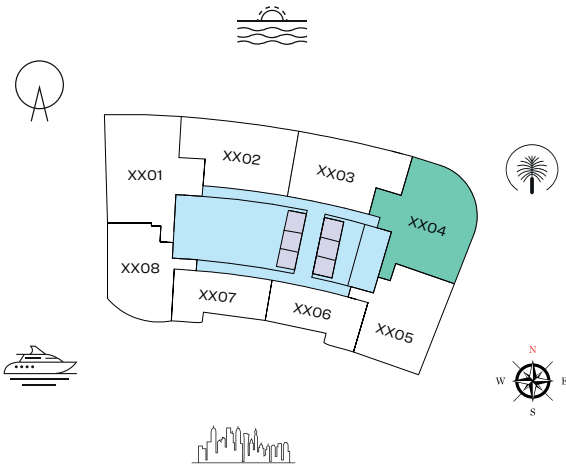
TYPE B (with maid room and powder room + balcony)

TOTAL SALEABLE AREA

SUITE = 1,963.55 SQ.FT.

BALCONY = 119.16 SQ.FT.

TOTAL = 2,082.71 SQ.FT.



TYPICAL FLOOR PLAN
LEVEL 12-23



List of unit numbers with this unit plan:

VIEWS

Palm Jumeirah, Harbour, Sea, Skydive

1204, 1304, 1404, 1504, 1604, 1704, 1804, 1904, 2004, 2104, 2204, 2304

Disclaimer: 1. All dimensions are in metric, measured to wall finishes. 2. All materials, dimensions & drawings are approximate. 3. Information is subject to change without notice, at developer's absolute discretion. 4. Actual area may vary from the stated area. 5. Drawing are not to scale. 6. All images used are for illustrative purpose only and do not represent the actual size, features, specifications, fittings and furnishings. 7. The developer reserves the right to make revisions/ alterations, at its absolute discretion, without any liability whatsoever.

3 BEDROOM APARTMENT

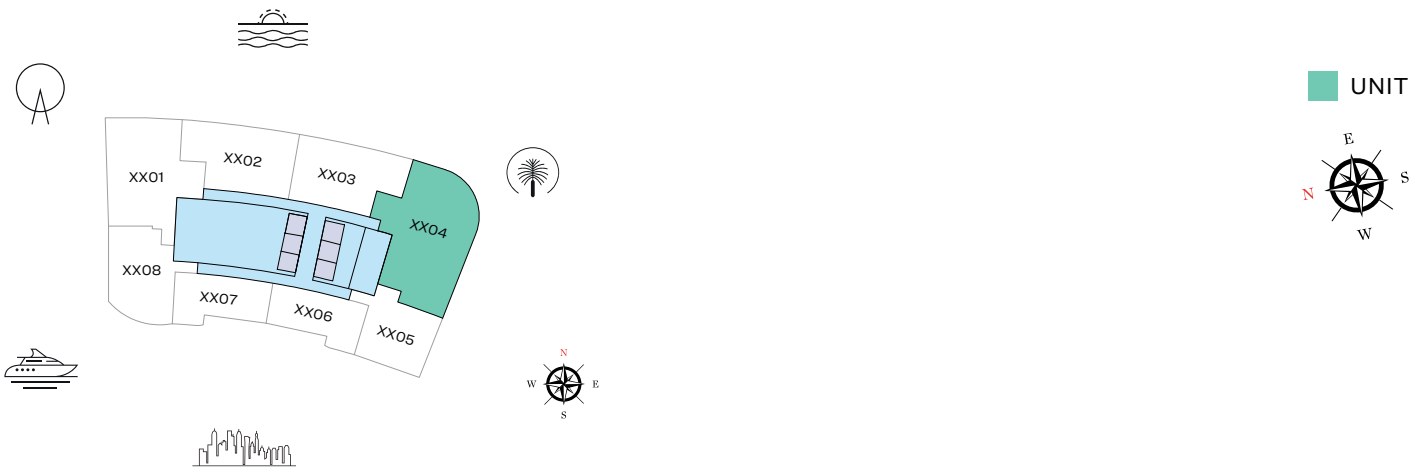
TYPE C (with maid room and powder room + balcony)

TOTAL SALEABLE AREA

SUITE = 2,338.89 SQ.FT.

BALCONY = 119.16 SQ.FT.

TOTAL = 2,458.05 SQ.FT.



TYPICAL FLOOR PLAN
LEVEL 25-32



List of unit numbers with this unit plan:

VIEWS

Palm Jumeirah, Harbour, Sea, Skydive
2504, 2604, 2704, 2804, 2904, 3004, 3104, 3204

Disclaimer: 1. All dimensions are in metric, measured to wall finishes. 2. All materials, dimensions & drawings are approximate. 3. Information is subject to change without notice, at developer's absolute discretion. 4. Actual area may vary from the stated area. 5. Drawing are not to scale. 6. All images used are for illustrative purpose only and do not represent the actual size, features, specifications, fittings and furnishings. 7. The developer reserves the right to make revisions/ alterations, at its absolute discretion, without any liability whatsoever.

2 BEDROOM APARTMENT

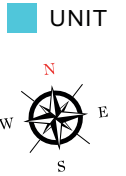
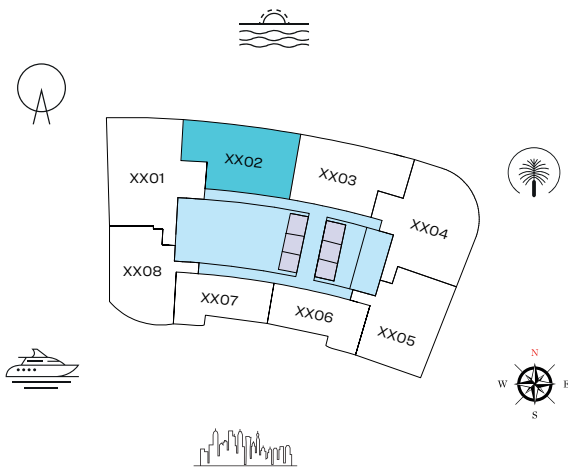
TYPE A (with powder room + balcony)

TOTAL SALEABLE AREA

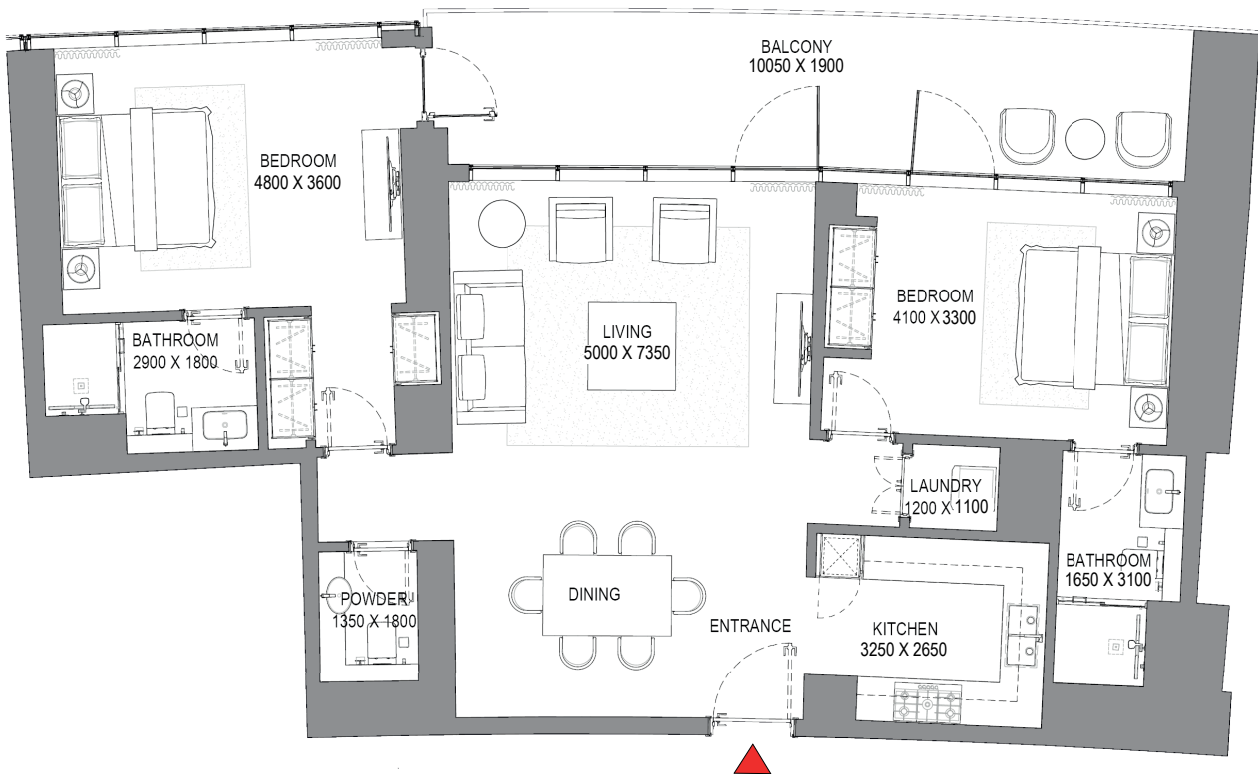
SUITE = 1,225.79 SQ.FT.

BALCONY = 230.89 SQ.FT.

TOTAL = 1,456.68 SQ.FT.



TYPICAL FLOOR PLAN
LEVEL 12-23 & 25-32



List of unit numbers with this unit plan:

VIEWS

Blue waters, Ain Dubai, Palm Jumeirah, Harbour, Sea, Skydive

1202, 1302, 1402, 1502, 1602, 1702, 1802, 1902, 2002, 2102, 2202, 2302, 2502, 2602, 2702, 2802, 2902, 3002, 3102, 3202

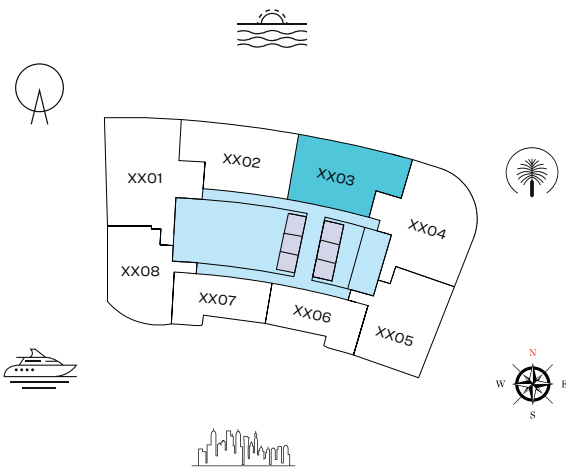
Disclaimer: 1. All dimensions are in metric, measured to wall finishes. 2. All materials, dimensions & drawings are approximate. 3. Information is subject to change without notice, at developer's absolute discretion. 4. Actual area may vary from the stated area. 5. Drawing are not to scale. 6. All images used are for illustrative purpose only and do not represent the actual size, features, specifications, fittings and furnishings. 7. The developer reserves the right to make revisions/ alterations, at its absolute discretion, without any liability whatsoever.

2 BEDROOM APARTMENT

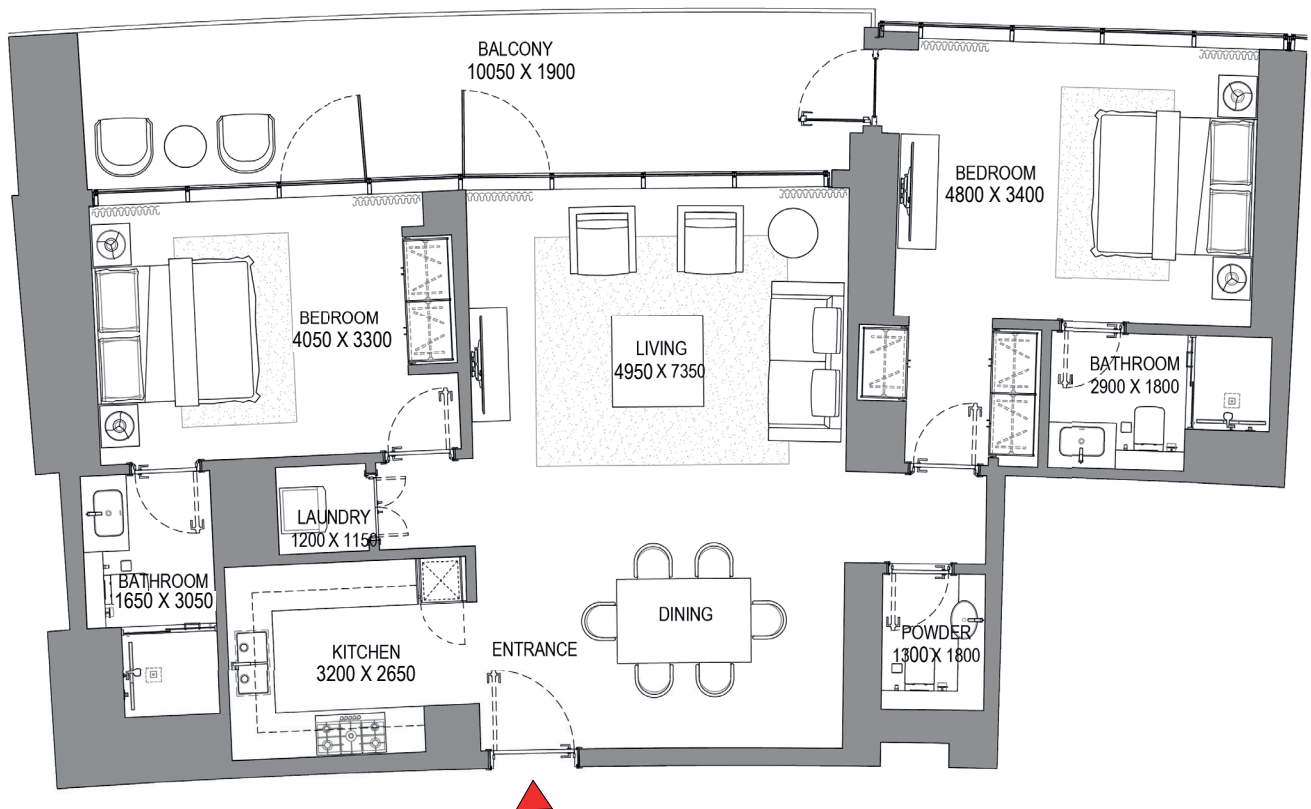
TYPE B (with powder room + balcony)

TOTAL SALEABLE AREA

SUITE RANGE = 1,213.95 - 1,214.28 SQ.FT.
 BALCONY RANGE = 230.02 - 230.35 SQ.FT.
 TOTAL = 1,444.30 SQ.FT.



TYPICAL FLOOR PLAN
 LEVEL 12-23 & 25-32



List of unit numbers with this unit plan:

VIEWS

Palm Jumeirah, Harbour, Sea, Skydive

1203, 1303, 1403, 1503, 1603, 1703, 1803, 1903, 2003, 2103, 2203, 2303, 2503, 2603, 2703, 2803, 2903, 3003, 3103, 3203

Disclaimer: 1. All dimensions are in metric, measured to wall finishes. 2. All materials, dimensions & drawings are approximate. 3. Information is subject to change without notice, at developer's absolute discretion. 4. Actual area may vary from the stated area. 5. Drawing are not to scale. 6. All images used are for illustrative purpose only and do not represent the actual size, features, specifications, fittings and furnishings. 7. The developer reserves the right to make revisions/ alterations, at its absolute discretion, without any liability whatsoever.

2 BEDROOM APARTMENT

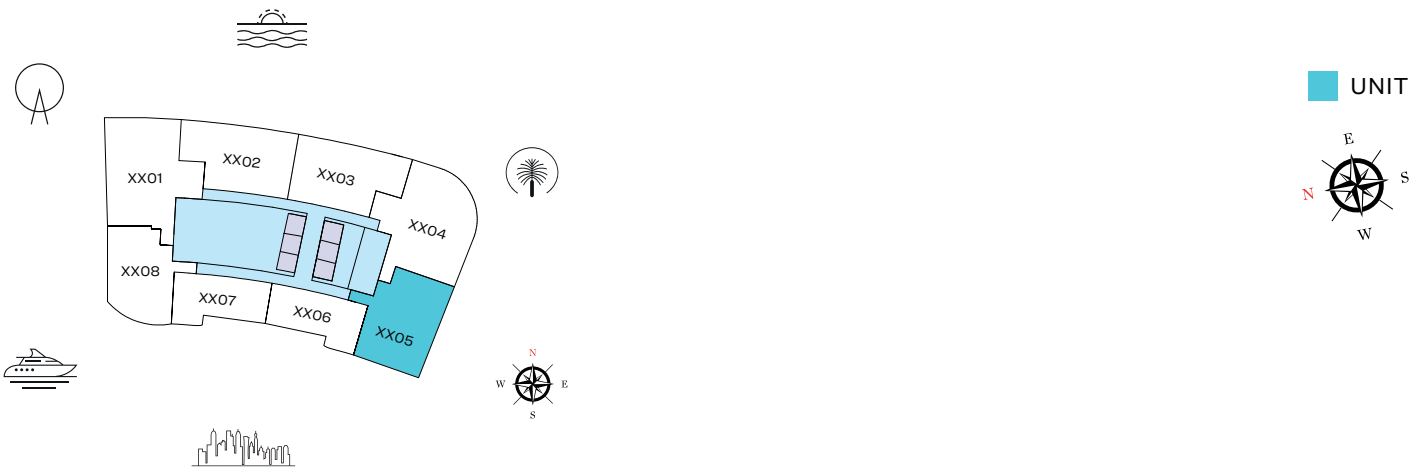
TYPE C (with powder room + balcony)

TOTAL SALEABLE AREA

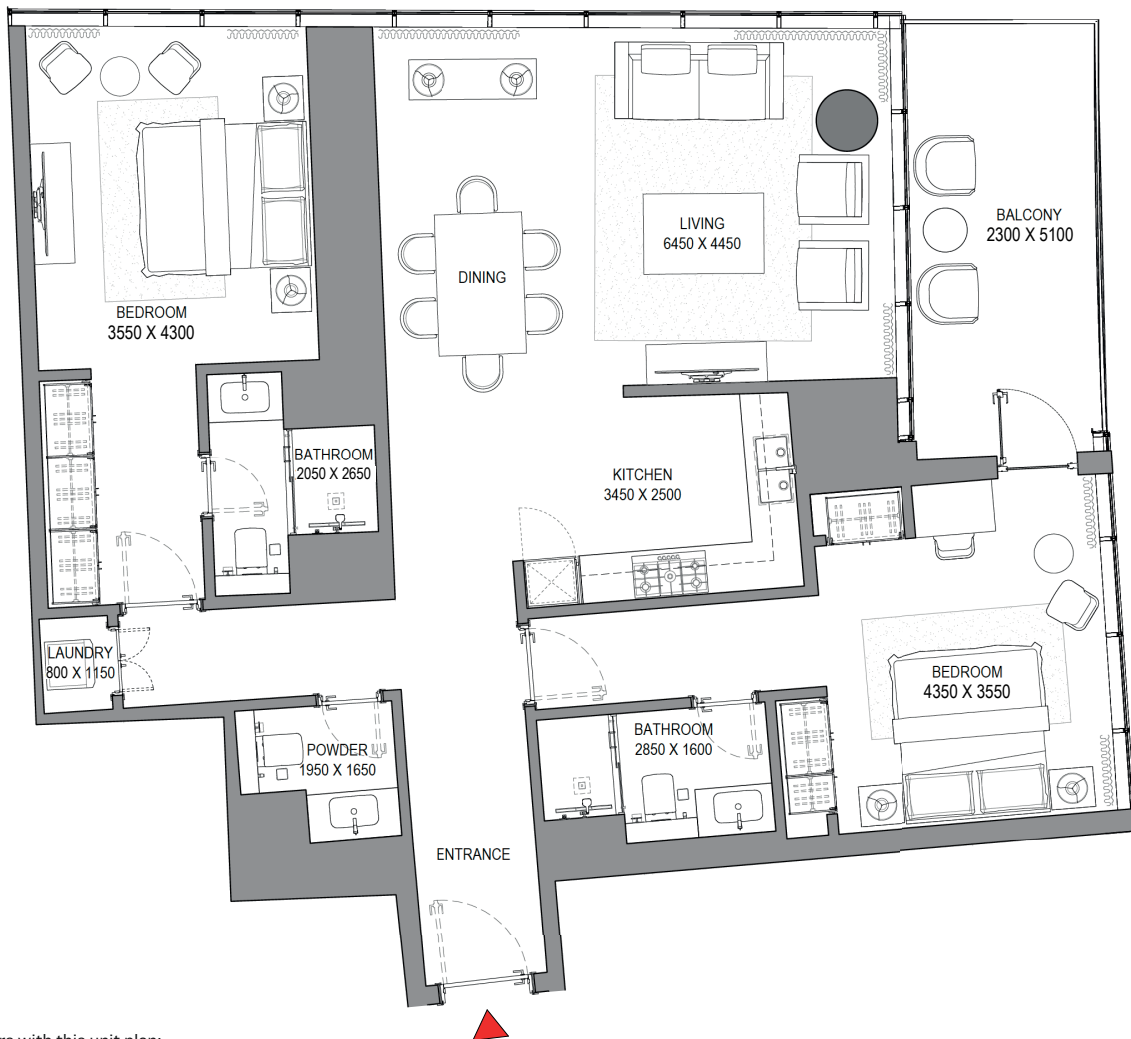
SUITE = 1,338.28 SQ.FT.

BALCONY = 136.49 SQ.FT.

TOTAL = 1,474.77 SQ.FT.



TYPICAL FLOOR PLAN
LEVEL 12-23



List of unit numbers with this unit plan:

VIEWS

Marina, Marina Skyline

1205, 1305, 1405, 1505, 1605, 1705, 1805, 1905, 2005, 2105, 2205, 2305

Disclaimer: 1. All dimensions are in metric, measured to wall finishes. 2. All materials, dimensions & drawings are approximate. 3. Information is subject to change without notice, at developer's absolute discretion. 4. Actual area may vary from the stated area. 5. Drawing are not to scale. 6. All images used are for illustrative purpose only and do not represent the actual size, features, specifications, fittings and furnishings. 7. The developer reserves the right to make revisions/ alterations, at its absolute discretion, without any liability whatsoever.

2 BEDROOM APARTMENT

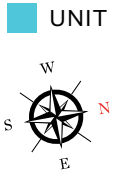
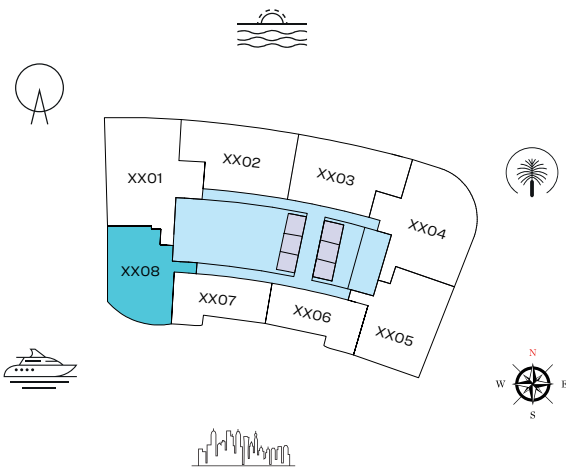
TYPE D (with powder room + balcony)

TOTAL SALEABLE AREA

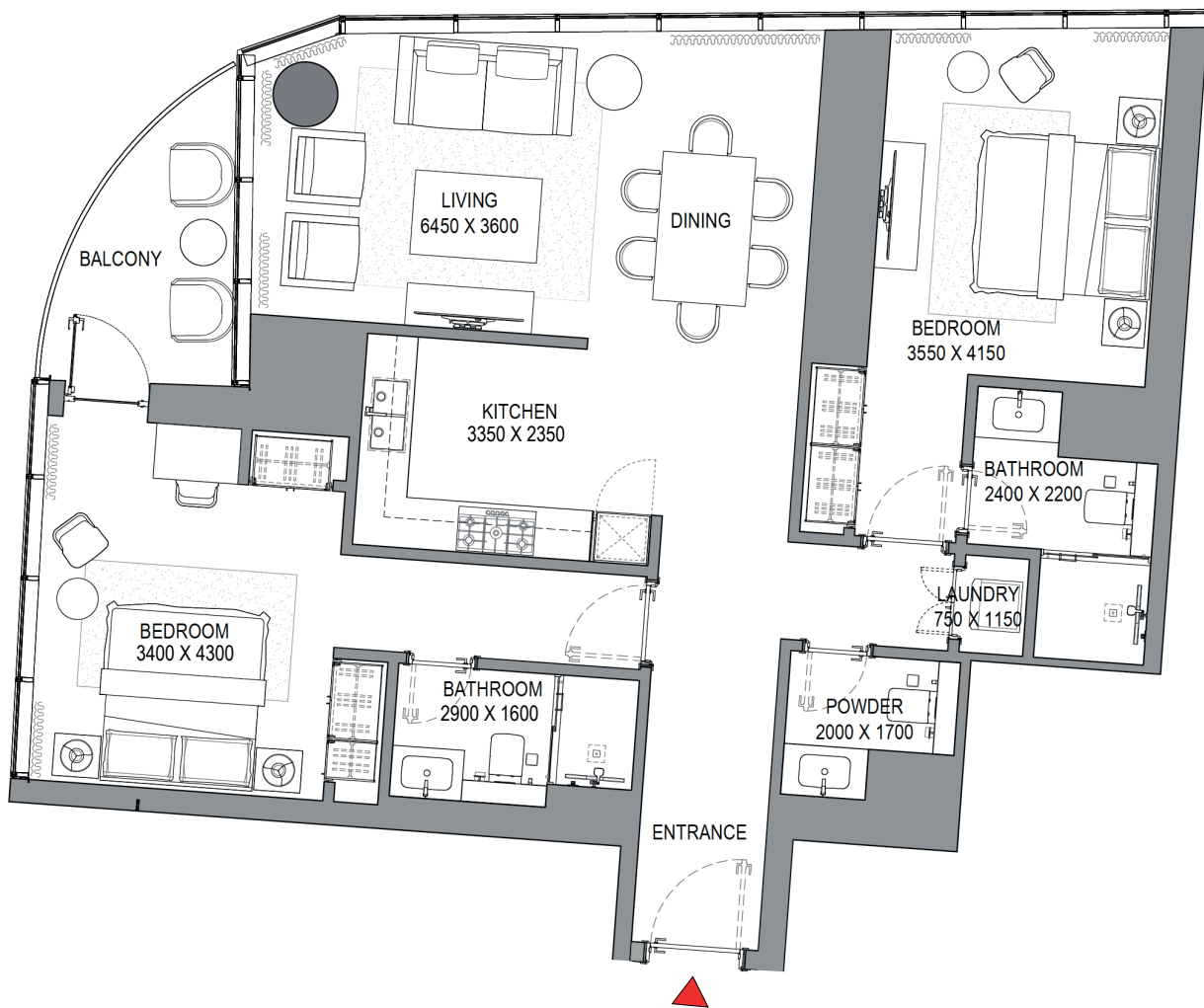
SUITE RANGE = 1,210.51 - 1,210.62 SQ.FT.

BALCONY RANGE = 70.93 - 71.04 SQ.FT.

TOTAL = 1,281.55 SQ.FT.



TYPICAL FLOOR PLAN
LEVEL 12-23 & 25-32



List of unit numbers with this unit plan:

VIEWS

Blue waters, Ain Dubai, JBR Beach, Marina, Sea

1208, 1308, 1408, 1508, 1608, 1708, 1808, 1908, 2008, 2108, 2208, 2308, 2508, 2608, 2708, 2808, 2908, 3008, 3108, 3208

Disclaimer: 1. All dimensions are in metric, measured to wall finishes. 2. All materials, dimensions & drawings are approximate. 3. Information is subject to change without notice, at developer's absolute discretion. 4. Actual area may vary from the stated area. 5. Drawing are not to scale. 6. All images used are for illustrative purpose only and do not represent the actual size, features, specifications, fittings and furnishings. 7. The developer reserves the right to make revisions/ alterations, at its absolute discretion, without any liability whatsoever.

1 BEDROOM APARTMENT

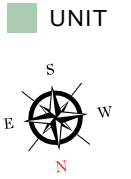
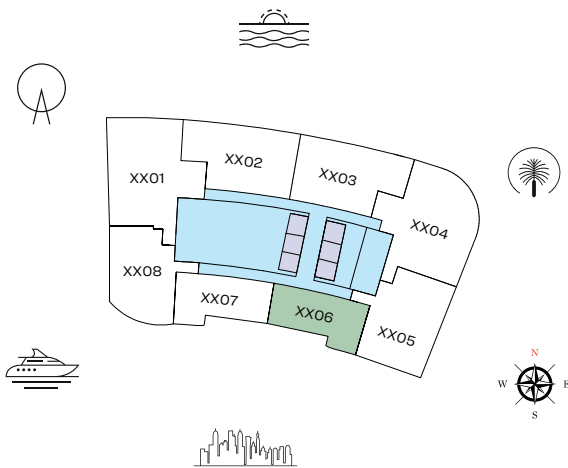
TYPE A (with powder room + balcony)

TOTAL SALEABLE AREA

SUITE = 793.30 SQ.FT.

BALCONY = 68.67 SQ.FT.

TOTAL = 861.97 SQ.FT.



TYPICAL FLOOR PLAN
LEVEL 12-23 & 25-32



List of unit numbers with this unit plan:

VIEWS

Marina, Marina Skyline

1206, 1306, 1406, 1506, 1606, 1706, 1806, 1906, 2006, 2106, 2206, 2306, 2506, 2606, 2706, 2806, 2906, 3006, 3106, 3206

Disclaimer: 1. All dimensions are in metric, measured to wall finishes. 2. All materials, dimensions & drawings are approximate. 3. Information is subject to change without notice, at developer's absolute discretion. 4. Actual area may vary from the stated area. 5. Drawing are not to scale. 6. All images used are for illustrative purpose only and do not represent the actual size, features, specifications, fittings and furnishings. 7. The developer reserves the right to make revisions/ alterations, at its absolute discretion, without any liability whatsoever.

1 BEDROOM APARTMENT

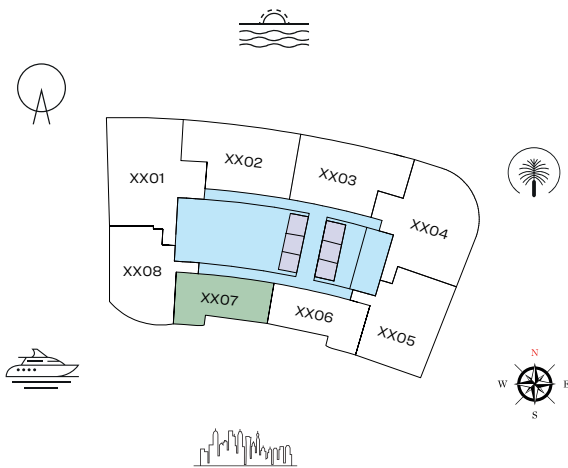
TYPE B (with powder room + balcony)

TOTAL SALEABLE AREA

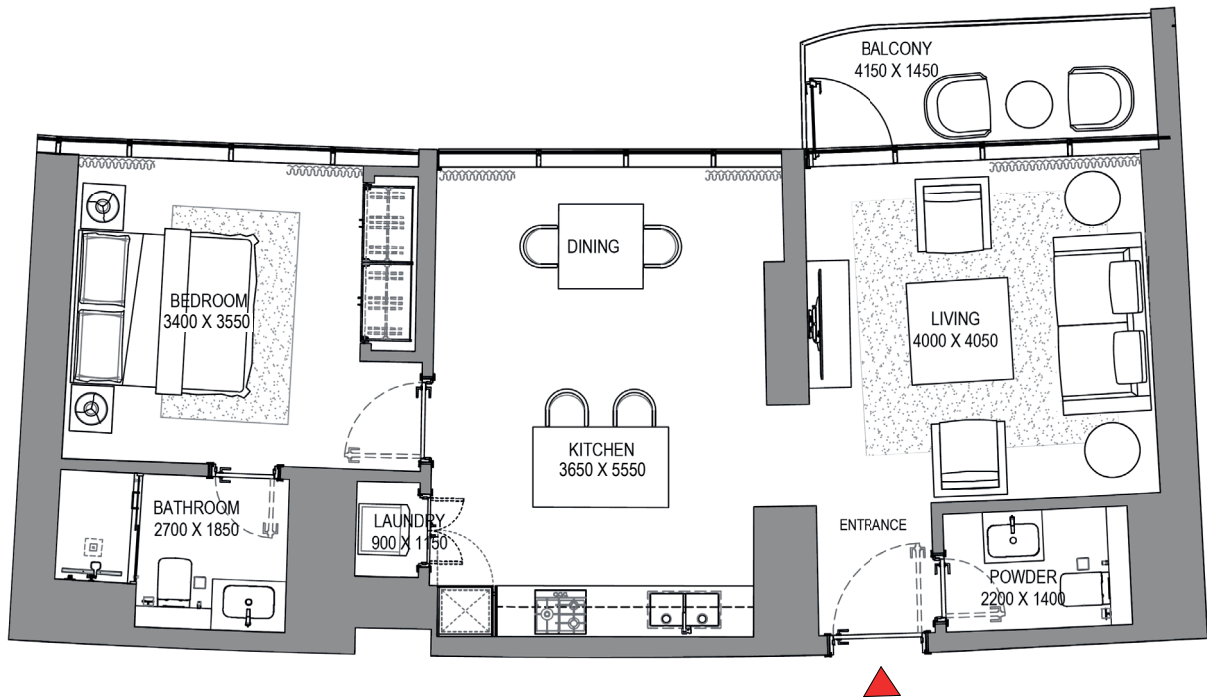
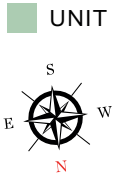
SUITE = 793.30 SQ.FT.

BALCONY = 67.38 SQ.FT.

TOTAL = 860.68 SQ.FT.



TYPICAL FLOOR PLAN
LEVEL 12-23 & 25-32



List of unit numbers with this unit plan:

VIEWS

Marina, Marina Skyline

1207, 1307, 1407, 1507, 1607, 1707, 1807, 1907, 2007, 2107, 2207, 2307, 2507, 2607, 2707, 2807, 2907, 3007, 3107, 3207

Disclaimer: 1. All dimensions are in metric, measured to wall finishes. 2. All materials, dimensions & drawings are approximate. 3. Information is subject to change without notice, at developer's absolute discretion. 4. Actual area may vary from the stated area. 5. Drawing are not to scale. 6. All images used are for illustrative purpose only and do not represent the actual size, features, specifications, fittings and furnishings. 7. The developer reserves the right to make revisions/ alterations, at its absolute discretion, without any liability whatsoever.

1 BEDROOM APARTMENT

TYPE C (with powder room + balcony)

TOTAL SALEABLE AREA

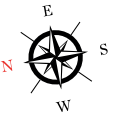
SUITE = 969.61 SQ.FT.

BALCONY = 136.49 SQ.FT.

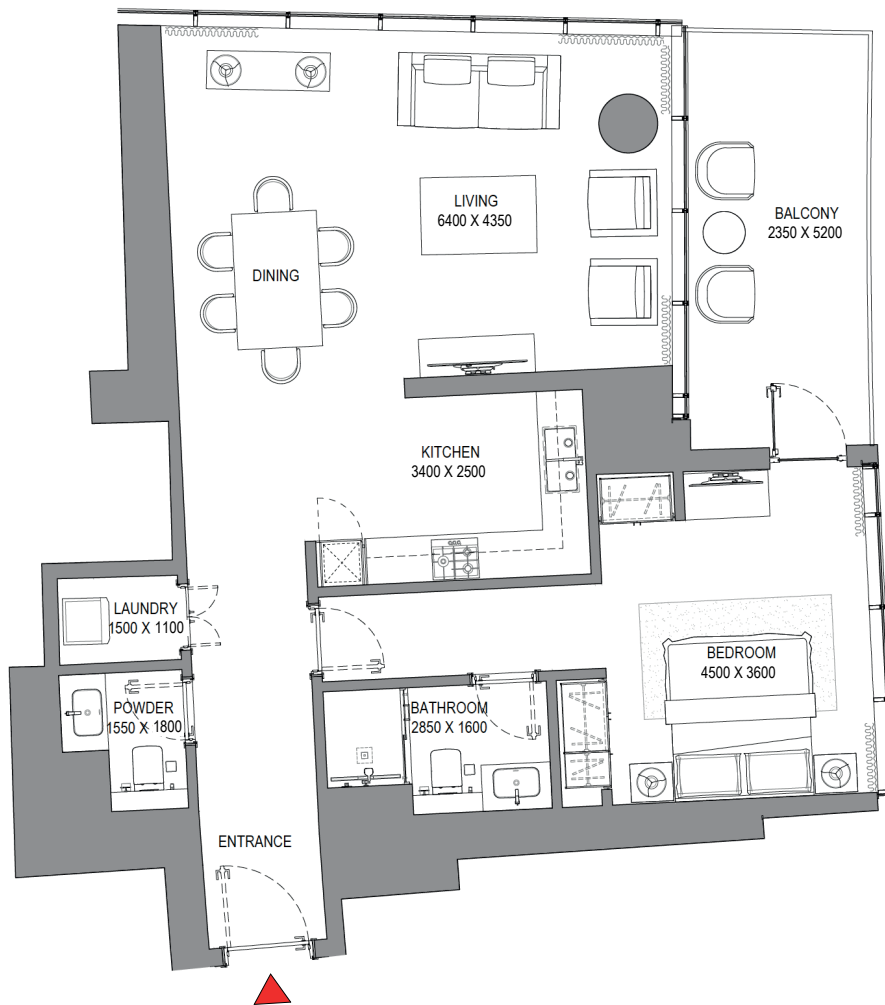
TOTAL = 1,106.10 SQ.FT.



UNIT



TYPICAL FLOOR PLAN
LEVEL 25-32



List of unit numbers with this unit plan:

VIEWS

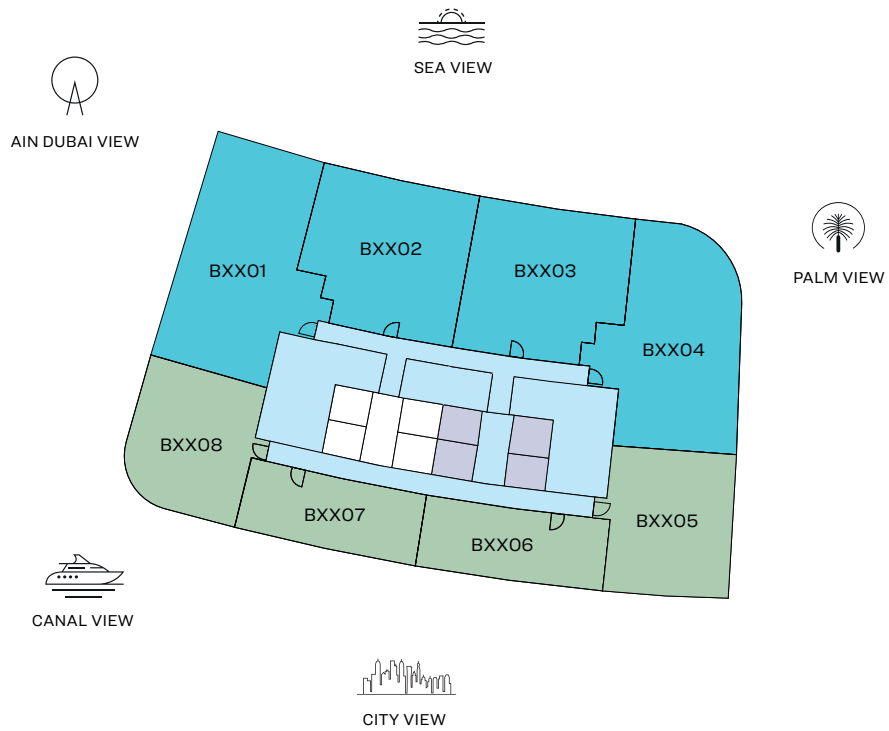
Marina, Marina Skyline

2505, 2605, 2705, 2805, 2905, 3005, 3105, 3205

Disclaimer: 1. All dimensions are in metric, measured to wall finishes. 2. All materials, dimensions & drawings are approximate. 3. Information is subject to change without notice, at developer's absolute discretion. 4. Actual area may vary from the stated area. 5. Drawing are not to scale. 6. All images used are for illustrative purpose only and do not represent the actual size, features, specifications, fittings and furnishings. 7. The developer reserves the right to make revisions/ alterations, at its absolute discretion, without any liability whatsoever.

FLOOR PLAN LAYOUT

TOWER B



LEVEL 11 - 31

- 1 BED UNIT
- 2 BED UNIT
- LOBBIES, CORRIDORS & STAIRS
- LIFTS

Disclaimer: 1. All dimensions are in metric, measured to wall finishes. 2. All materials, dimensions & drawings are approximate. 3. Information is subject to change without notice, at developer's absolute discretion. 4. Actual area may vary from the stated area. 5. Drawing are not to scale. 6. All images used are for illustrative purpose only and do not represent the actual size, features, specifications, fittings and furnishings. 7. The developer reserves the right to make revisions/ alterations, at its absolute discretion, without any liability whatsoever.

2 BEDROOM APARTMENT

TYPE E (with powder room + balcony)

TOTAL SALEABLE AREA

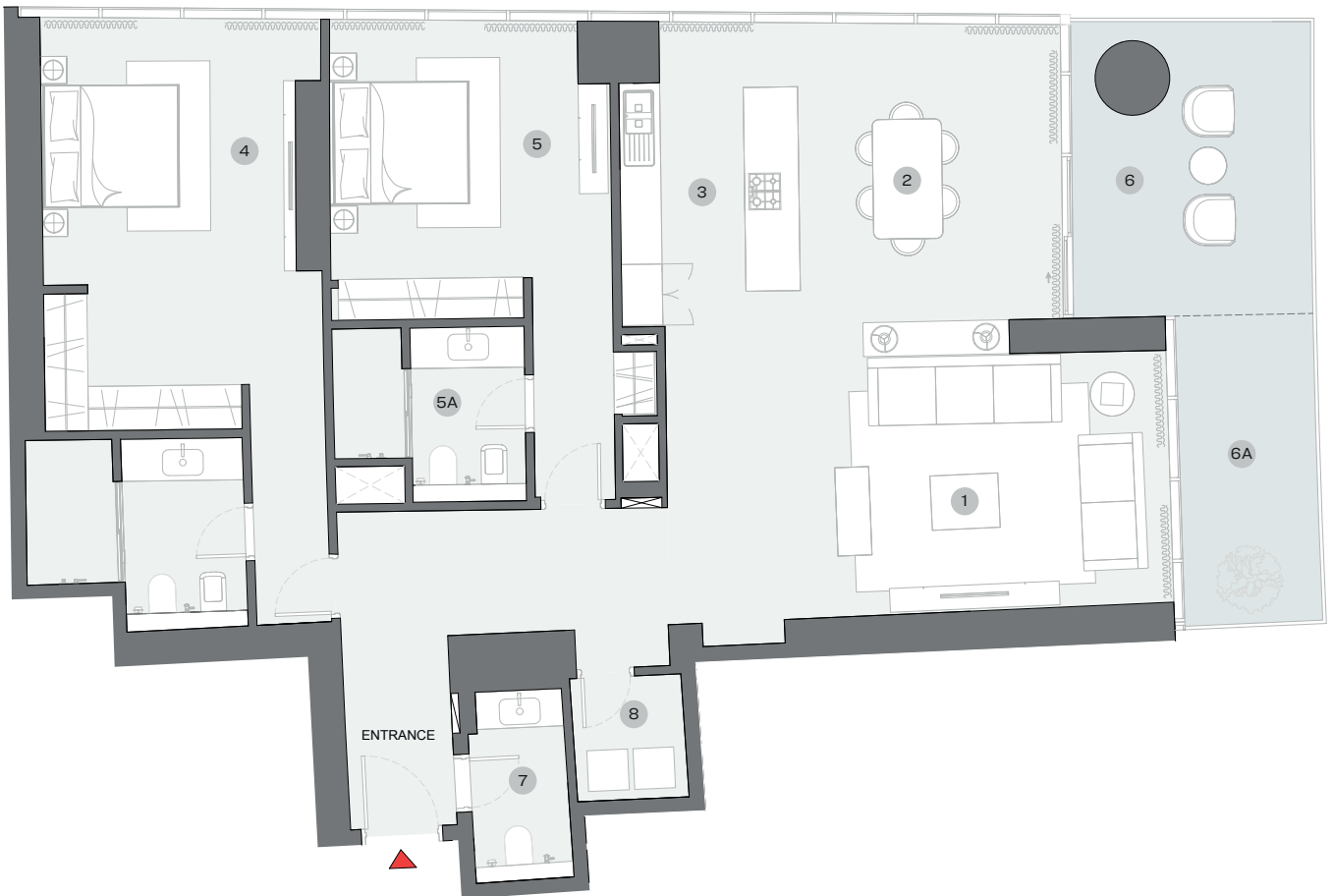
SUITE = 1,749.78 SQ.FT.

BALCONY = 273.30 SQ.FT.

TOTAL = 2,023.08 SQ.FT.



UNIT



List of unit numbers with this unit plan:

VIEWS

Blue waters, Ain Dubai, Palm Jumeirah, Harbour, Sea, Skydive
B1101, B1201, B1301, B1401, B1501, B1601, B1701, B1801, B1901,
B2001, B2101, B2201, B2301, B2401, B2501, B2601, B2701, B2801,
B2901, B3001, B3101

DIMENSIONS (MM)

1 LIVING - 7400 X 3700	4 MASTER BEDROOM - 3700 X 5350	6 BALCONY 1 - 3500 X 4300
2 DINING - 3850 X 4800	4A MASTER BATHROOM - 3200 X 2850	6A BALCONY 2 - 2000 X 4500
3 KITCHEN - 2600 X 4000	5 BEDROOM 2 - 4100 X 4000	7 POWDER - 1450 X 3000
	5A BATHROOM 2 - 2800 X 2550	8 UTILITY - 1650 X 1850

Disclaimer: 1. All dimensions are in metric, measured to wall finishes. 2. All materials, dimensions & drawings are approximate. 3. Information is subject to change without notice, at developer's absolute discretion. 4. Actual area may vary from the stated area. 5. Drawing are not to scale. 6. All images used are for illustrative purpose only and do not represent the actual size, features, specifications, fittings and furnishings. 7. The developer reserves the right to make revisions/ alterations, at its absolute discretion, without any liability whatsoever.

2 BEDROOM APARTMENT

TYPE F (with powder room + balcony)

TOTAL SALEABLE AREA

SUITE = 1,273.48 SQ.FT.

BALCONY = 396.76 SQ.FT.

TOTAL = 1,670.24 SQ.FT.



UNIT



List of unit numbers with this unit plan:

VIEWS

Palm Jumeirah, Harbour, Sea

B1102, B1202, B1302, B1402, B1502, B1602, B1702, B1802, B1902, B2002, B2102, B2202, B2302, B2402, B2502, B2602, B2702, B2802, B2902, B3002, B3102

DIMENSIONS (MM)

1 LIVING - 4200 X 4100	4 MASTER BEDROOM - 3900 X 4450	6 BALCONY 1 - 8100 X 3100
2 DINING - 4300 X 2800	4A MASTER BATHROOM - 3000 X 2600	6A BALCONY 2 - 4650 X 2000
3 KITCHEN - 2800 X 2500	5 BEDROOM 2 - 3650 X 3650	7 POWDER - 1800 X 2200
	5A BATHROOM 2 - 2600 X 2600	8 UTILITY - 850 X 1500

Disclaimer: 1. All dimensions are in metric, measured to wall finishes. 2. All materials, dimensions & drawings are approximate. 3. Information is subject to change without notice, at developer's absolute discretion. 4. Actual area may vary from the stated area. 5. Drawing are not to scale. 6. All images used are for illustrative purpose only and do not represent the actual size, features, specifications, fittings and furnishings. 7. The developer reserves the right to make revisions/ alterations, at its absolute discretion, without any liability whatsoever.

2 BEDROOM APARTMENT

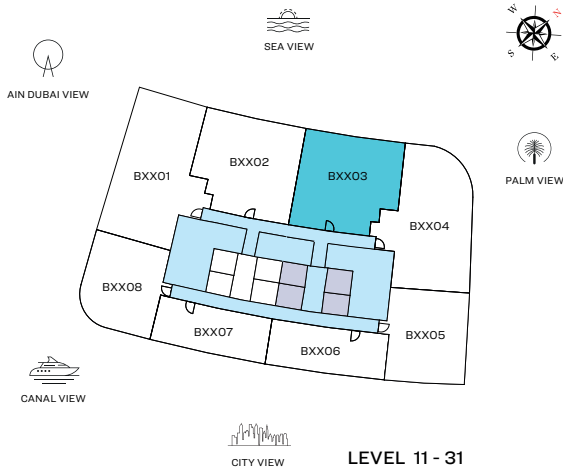
TYPE G (with powder room + balcony)

TOTAL SALEABLE AREA

SUITE = 1,270.57 SQ.FT.

BALCONY = 394.50 SQ.FT.

TOTAL = 1,665.07 SQ.FT.



UNIT



List of unit numbers with this unit plan:

VIEWS

Palm Jumeirah, Harbour, Sea

B1103, B1203, B1303, B1403, B1503, B1603, B1703, B1803, B1903, B2003, B2103, B2203, B2303, B2403, B2503, B2603, B2703, B2803, B2903, B3003, B3103

DIMENSIONS (MM)

1 LIVING - 4150 X 4050	4 MASTER BEDROOM - 3800 X 4450	6 BALCONY 1 - 8000 X 3100
2 DINING - 4300 X 2800	4A MASTER BATHROOM - 3000 X 2600	6A BALCONY 2 - 4600 X 2000
3 KITCHEN - 2850 X 2500	5 BEDROOM 2 - 3800 X 3650	7 POWDER - 1850 X 1950
	5A BATHROOM 2 - 2600 X 2600	8 UTILITY - 850 X 1500

Disclaimer: 1. All dimensions are in metric, measured to wall finishes. 2. All materials, dimensions & drawings are approximate. 3. Information is subject to change without notice, at developer's absolute discretion. 4. Actual area may vary from the stated area. 5. Drawing are not to scale. 6. All images used are for illustrative purpose only and do not represent the actual size, features, specifications, fittings and furnishings. 7. The developer reserves the right to make revisions/ alterations, at its absolute discretion, without any liability whatsoever.

2 BEDROOM APARTMENT

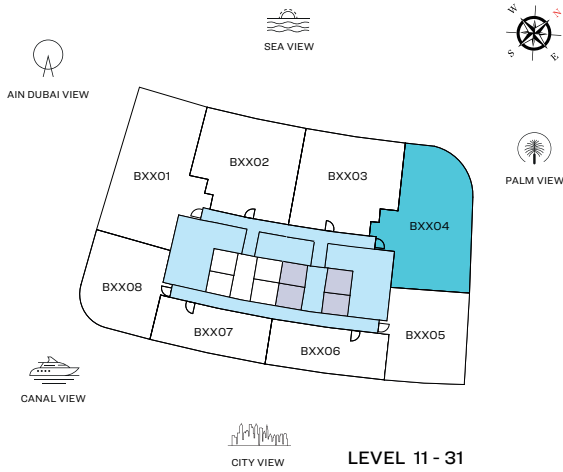
TYPE H (with powder room + balcony)

TOTAL SALEABLE AREA

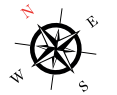
SUITE = 1,740.63 SQ.FT.

BALCONY = 189.65 SQ.FT.

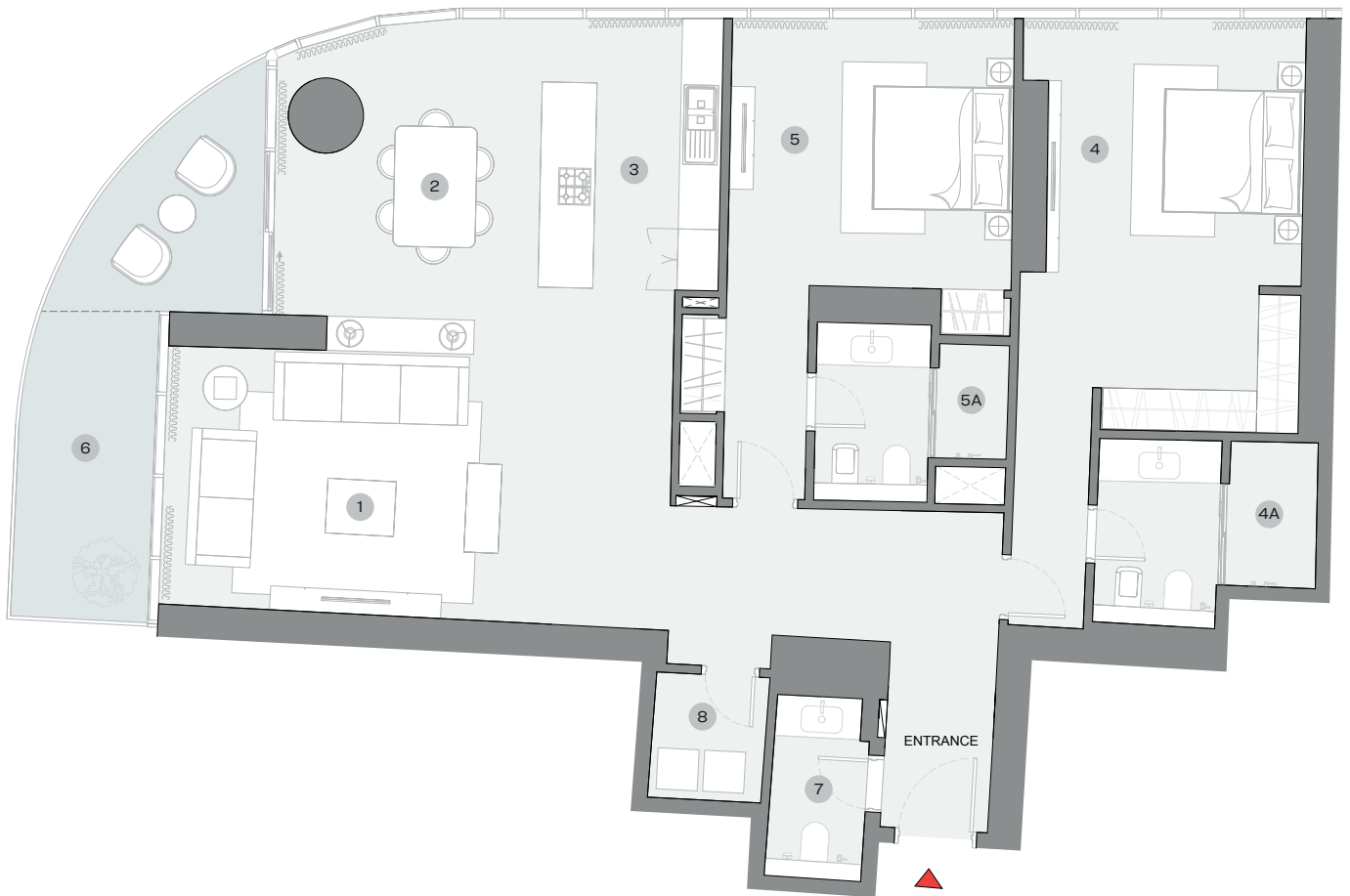
TOTAL = 1,930.28 SQ.FT.



UNIT



LEVEL 11 - 31



List of unit numbers with this unit plan:

VIEWS

Palm Jumeirah, Harbour, Sea

B1104, B1204, B1304, B1404, B1504, B1604, B1704, B1804, B1904, B2004, B2104, B2204, B2304, B2404, B2504, B2604, B2704, B2804, B2904, B3004, B3104

DIMENSIONS (MM)

- | | | |
|-------------------------|----------------------------------|-------------------------|
| 1 LIVING - 7400 X 3850 | 4 MASTER BEDROOM - 3700 X 5350 | 6 BALCONY - 2000 X 4550 |
| 2 DINING - 4000 X 4900 | 4A MASTER BATHROOM - 3200 X 2700 | 7 POWDER - 1400 X 2850 |
| 3 KITCHEN - 2600 X 3950 | 5 BEDROOM 2 - 4150 X 3850 | 8 UTILITY - 1650 X 1850 |
| | 5A BATHROOM 2 - 2800 X 2550 | |

Disclaimer: 1. All dimensions are in metric, measured to wall finishes. 2. All materials, dimensions & drawings are approximate. 3. Information is subject to change without notice, at developer's absolute discretion. 4. Actual area may vary from the stated area. 5. Drawing are not to scale. 6. All images used are for illustrative purpose only and do not represent the actual size, features, specifications, fittings and furnishings. 7. The developer reserves the right to make revisions/ alterations, at its absolute discretion, without any liability whatsoever.

1 BEDROOM + STUDY APARTMENT

TYPE D (with powder room + balcony)

TOTAL SALEABLE AREA

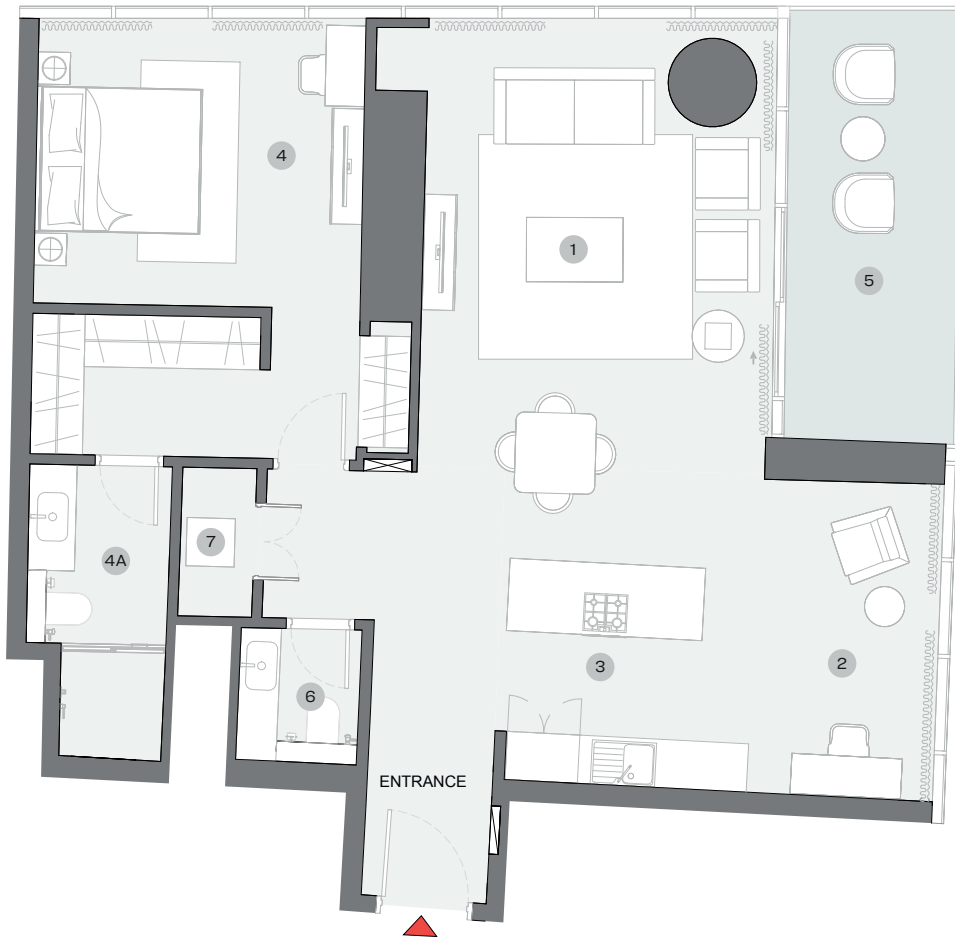
SUITE = 1,102.21 SQ.FT.

BALCONY = 131.43 SQ.FT.

TOTAL = 1,233.64 SQ.FT.



UNIT



List of unit numbers with this unit plan:

VIEWS

Marina Skyline

B1105, B1205, B1305, B1405, B1505, B1605, B1705, B1805, B1905, B2005, B2105, B2205, B2305, B2405, B2505, B2605, B2705, B2805, B2905, B3005, B3105

DIMENSIONS (MM)

1 LIVING/DINING - 4350 X 6700	4 BEDROOM - 4050 X 3550	5 BALCONY - 2150 X 5250
2 STUDY - 2650 X 3950	4A BATHROOM - 1800 X 3600	6 POWDER - 1500 X 1750
3 KITCHEN - 2650 X 2750	7 UTILITY - 900 X 1850	

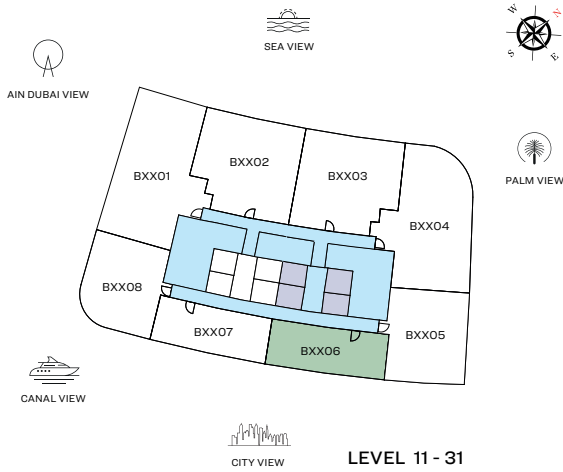
Disclaimer: 1. All dimensions are in metric, measured to wall finishes. 2. All materials, dimensions & drawings are approximate. 3. Information is subject to change without notice, at developer's absolute discretion. 4. Actual area may vary from the stated area. 5. Drawing are not to scale. 6. All images used are for illustrative purpose only and do not represent the actual size, features, specifications, fittings and furnishings. 7. The developer reserves the right to make revisions/ alterations, at its absolute discretion, without any liability whatsoever.

1 BEDROOM APARTMENT

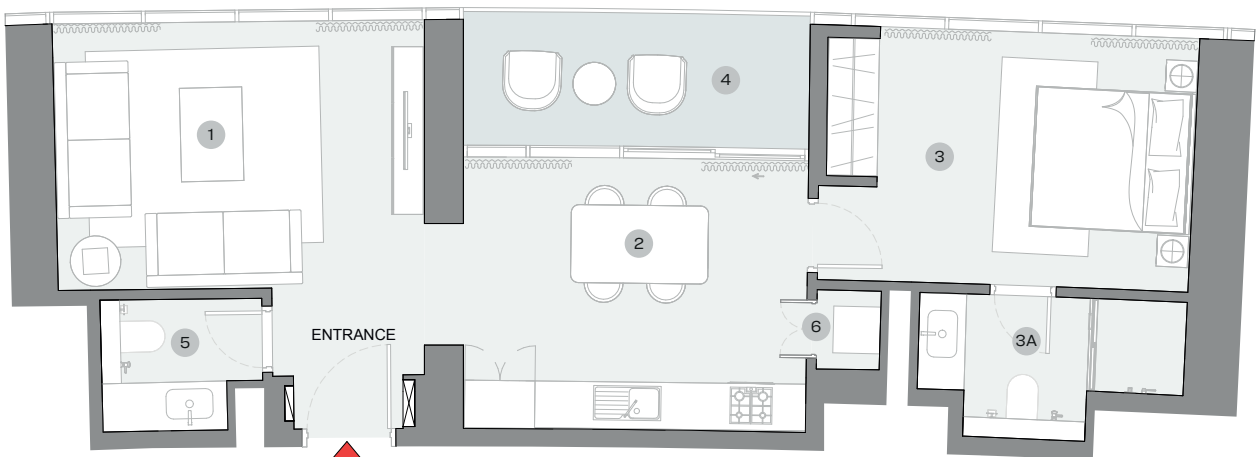
TYPE E (with powder room + balcony)

TOTAL SALEABLE AREA

SUITE = 748.85 SQ.FT.
BALCONY = 92.57 SQ.FT.
TOTAL = 841.41 SQ.FT.



UNIT



List of unit numbers with this unit plan:

VIEWS

Marina Skyline
B1106, B1206, B1306, B1406, B1506, B1606, B1706, B1806, B1906, B2006, B2106, B2206, B2306, B2406, B2506, B2606, B2706, B2806, B2906, B3006, B3106

DIMENSIONS (MM)

1 LIVING - 4700 X 3450	3 BEDROOM - 4000 X 3250	4 BALCONY - 4650 X 1700
2 KITCHEN/DINING - 4400 X 3500	3A BATHROOM - 3400 X 1850	5 POWDER - 2050 X 1700
		6 UTILITY - 800 X 1000

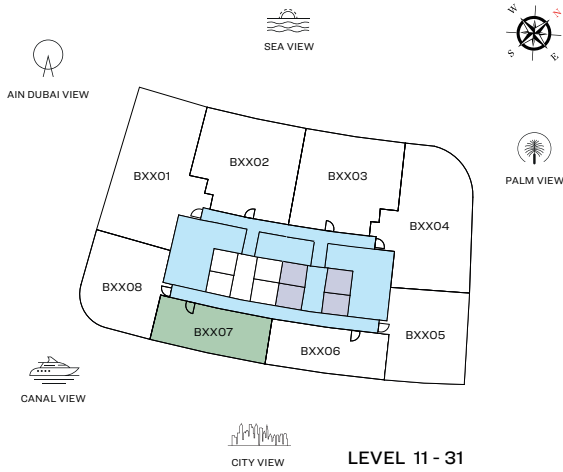
Disclaimer: 1. All dimensions are in metric, measured to wall finishes. 2. All materials, dimensions & drawings are approximate. 3. Information is subject to change without notice, at developer's absolute discretion. 4. Actual area may vary from the stated area. 5. Drawing are not to scale. 6. All images used are for illustrative purpose only and do not represent the actual size, features, specifications, fittings and furnishings. 7. The developer reserves the right to make revisions/ alterations, at its absolute discretion, without any liability whatsoever.

1 BEDROOM APARTMENT

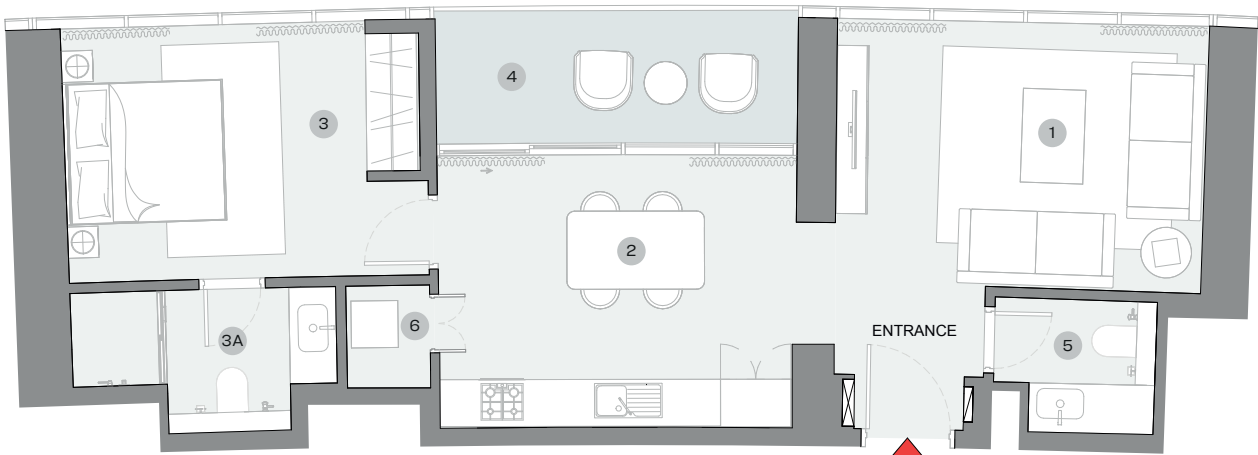
TYPE F (with powder room + balcony)

TOTAL SALEABLE AREA

SUITE = 754.38 SQ.FT.
BALCONY = 96.23 SQ.FT.
TOTAL = 850.61 SQ.FT.



UNIT



List of unit numbers with this unit plan:

VIEWS

Marina Skyline
B1107, B1207, B1307, B1407, B1507, B1607, B1707, B1807, B1907,
B2007, B2107, B2207, B2307, B2407, B2507, B2607, B2707,
B2807, B2907, B3007, B3107

DIMENSIONS (MM)

1 LIVING - 4750 X 3400	3 BEDROOM - 3850 X 3250	4 BALCONY - 4650 X 1700
2 KITCHEN/DINING - 4550 X 3500	3A BATHROOM - 3400 X 1850	5 POWDER - 2100 X 1750
		6 UTILITY - 1050 X 1300

Disclaimer: 1. All dimensions are in metric, measured to wall finishes. 2. All materials, dimensions & drawings are approximate. 3. Information is subject to change without notice, at developer's absolute discretion. 4. Actual area may vary from the stated area. 5. Drawing are not to scale. 6. All images used are for illustrative purpose only and do not represent the actual size, features, specifications, fittings and furnishings. 7. The developer reserves the right to make revisions/ alterations, at its absolute discretion, without any liability whatsoever.

1 BEDROOM + STUDY APARTMENT

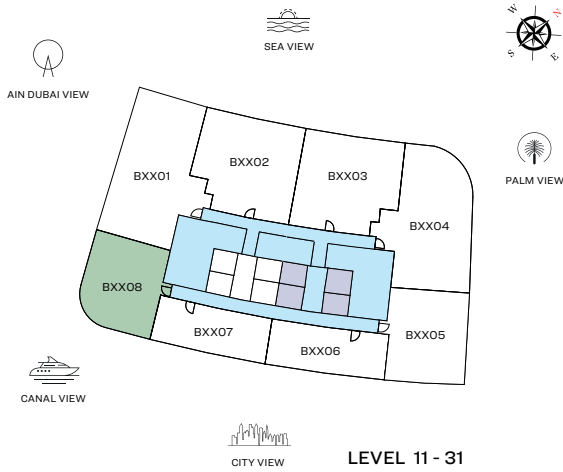
TYPE G (with powder room + balcony)

TOTAL SALEABLE AREA

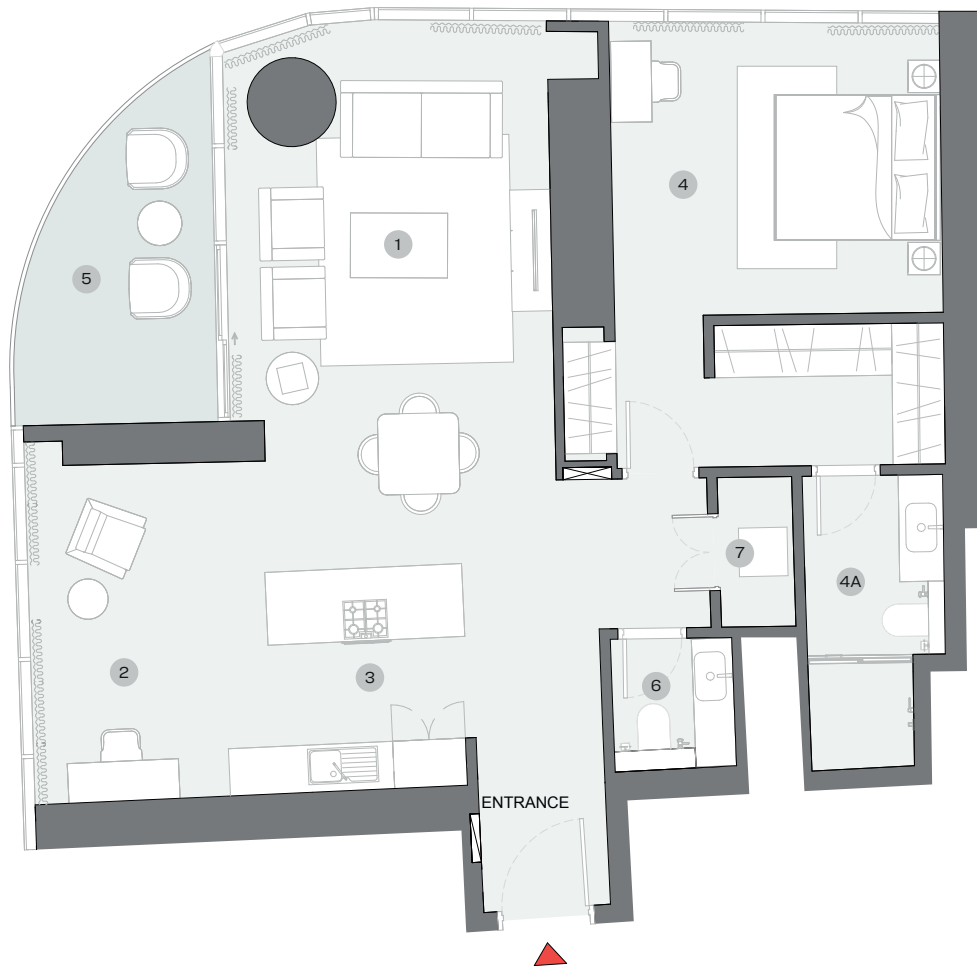
SUITE = 1,086.46 SQ.FT.

BALCONY = 104.15 SQ.FT.

TOTAL = 1,190.62 SQ.FT.



UNIT



List of unit numbers with this unit plan:

VIEWS

Marina Skyline, Sea
B1108

Marina, Marina Skyline, Sea
B1208, B1308, B1408, B1508, B1608, B1708, B1808, B1908, B2008,
B2108, B2208, B2308, B2408, B2508, B2608, B2708, B2808,
B2908, B3008, B3108

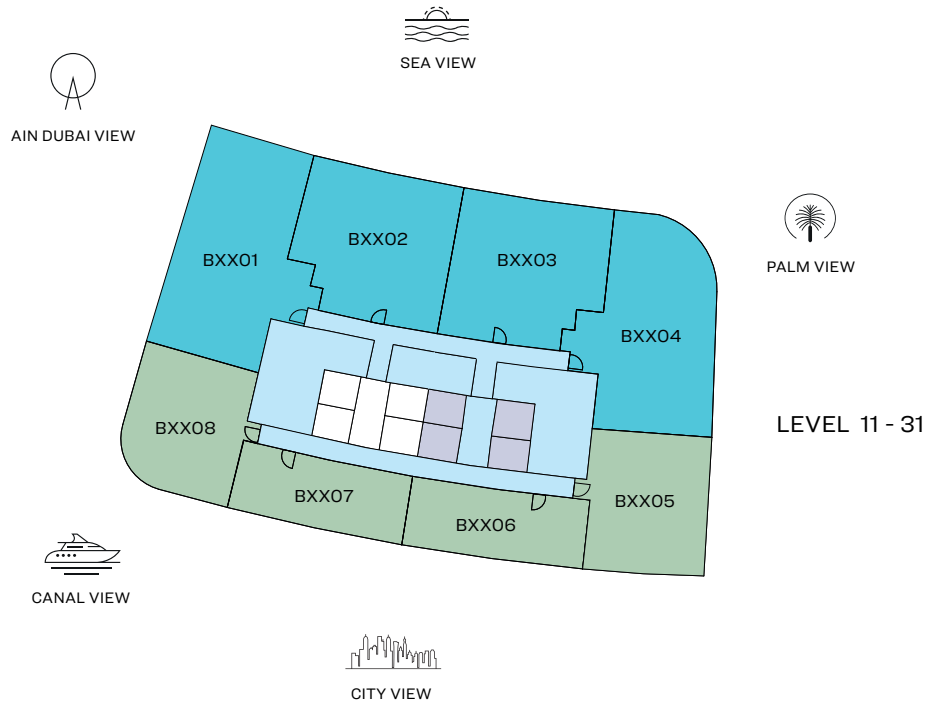
DIMENSIONS (MM)

1 LIVING/DINING - 4000 X 6650	4 BEDROOM - 4100 X 3550	5 BALCONY
2 STUDY - 2650 X 4100	4A BATHROOM - 1750 X 3600	6 POWDER - 1500 X 1600
3 KITCHEN - 2650 X 2700		7 UTILITY - 900 X 1850

Disclaimer: 1. All dimensions are in metric, measured to wall finishes. 2. All materials, dimensions & drawings are approximate. 3. Information is subject to change without notice, at developer's absolute discretion. 4. Actual area may vary from the stated area. 5. Drawing are not to scale. 6. All images used are for illustrative purpose only and do not represent the actual size, features, specifications, fittings and furnishings. 7. The developer reserves the right to make revisions/ alterations, at its absolute discretion, without any liability whatsoever.

FLOOR PLAN LAYOUT

TOWER B

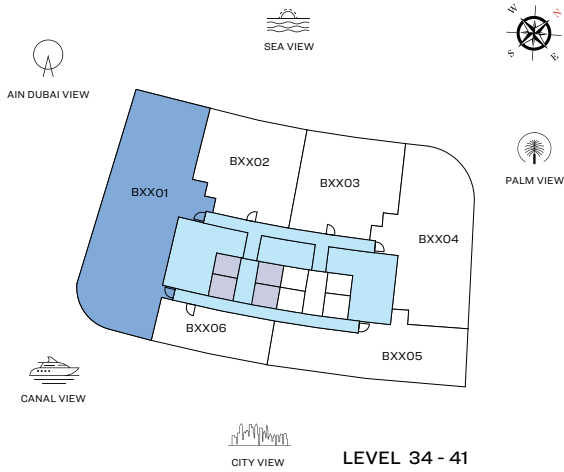


- 1 BED UNIT
- 2 BED UNIT
- 3 BED UNIT
- LOBBIES, CORRIDORS & STAIRS
- LIFTS

Disclaimer: 1. All dimensions are in metric, measured to wall finishes. 2. All materials, dimensions & drawings are approximate. 3. Information is subject to change without notice, at developer's absolute discretion. 4. Actual area may vary from the stated area. 5. Drawing are not to scale. 6. All images used are for illustrative purpose only and do not represent the actual size, features, specifications, fittings and furnishings. 7. The developer reserves the right to make revisions/ alterations, at its absolute discretion, without any liability whatsoever.

3 BEDROOM APARTMENT

TYPE A (with powder room + maid room + balcony)



UNIT



List of unit numbers with this unit plan:

VIEWS

Blue waters, Ain Dubai, Palm Jumeirah, Harbour, Skydive, Marina, Marina Skyline, Sea, JBR Beach

B3401, B3501, B3601, B3701, B3801, B3901, B4001, B4101,

Disclaimer: 1. All dimensions are in metric, measured to wall finishes. 2. All materials, dimensions & drawings are approximate. 3. Information is subject to change without notice, at developer's absolute discretion. 4. Actual area may vary from the stated area. 5. Drawing are not to scale. 6. All images used are for illustrative purpose only and do not represent the actual size, features, specifications, fittings and furnishings. 7. The developer reserves the right to make revisions/ alterations, at its absolute discretion, without any liability whatsoever.

3 BEDROOM APARTMENT

AREAS & DIMENSIONS

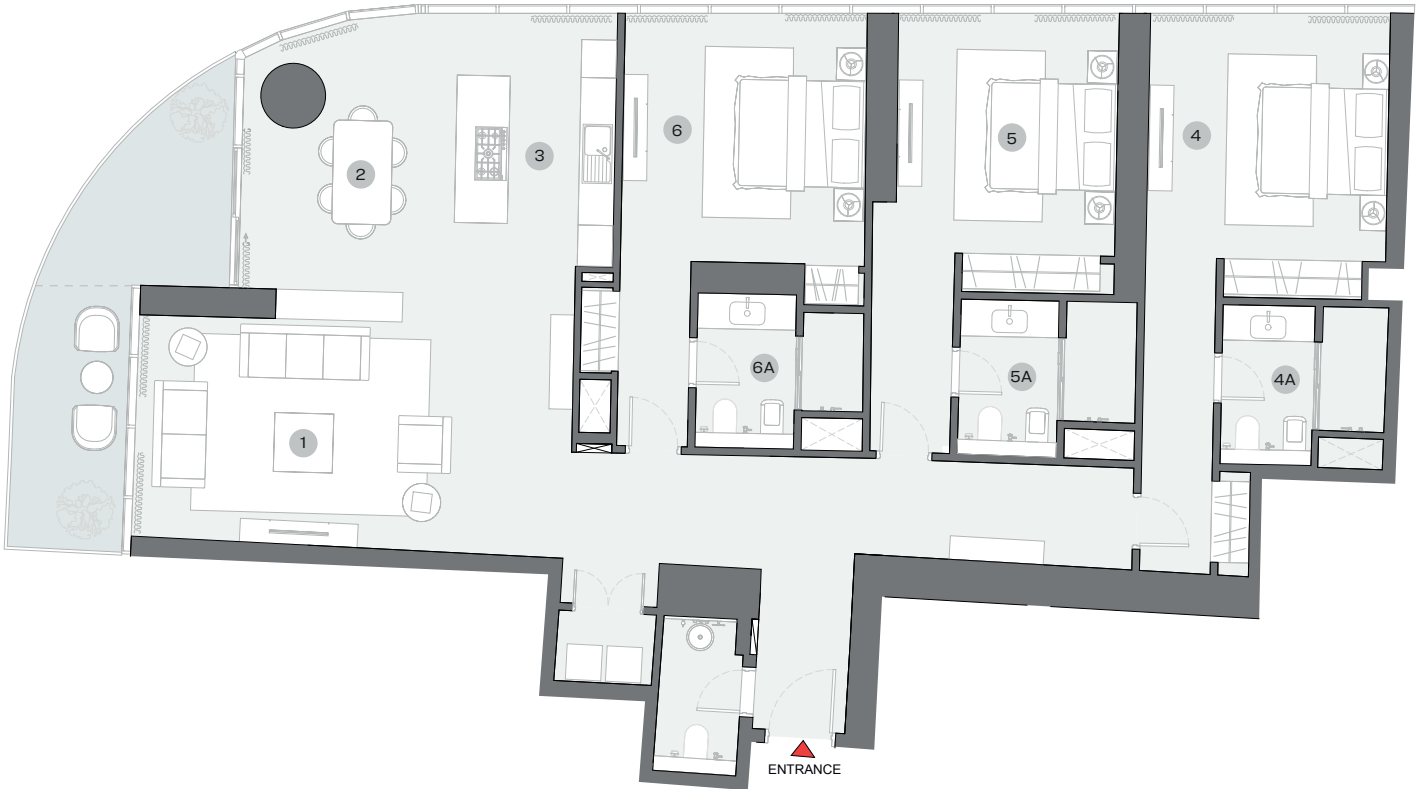
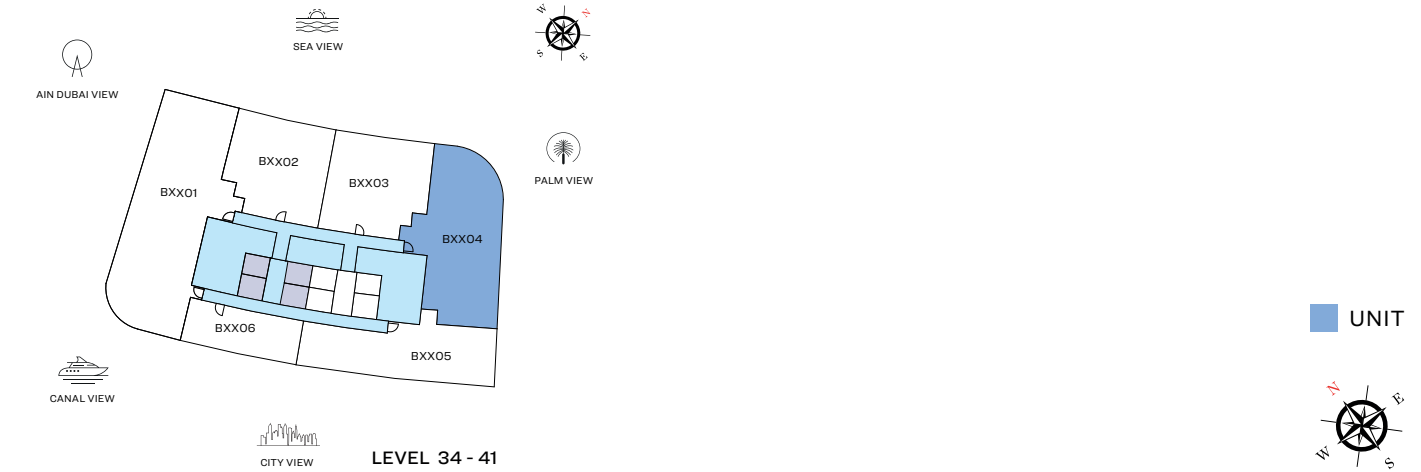
TYPE A (with powder room + maid room)

		UNIT NO. B3401 SUITE = 2,918.10 SQ.FT. BALCONY = 388.68 SQ.FT. TOTAL = 3,306.78 SQ.FT.	UNIT NO. B3501 SUITE = 2,969.98 SQ.FT. BALCONY = 395.68 SQ.FT. TOTAL = 3,365.66 SQ.FT.	UNIT NO. B3601 SUITE = 3,006.25 SQ.FT. BALCONY = 401.06 SQ.FT. TOTAL = 3,407.31 SQ.FT.	UNIT NO. B3701 SUITE = 3,049.20 SQ.FT. BALCONY = 416.56 SQ.FT. TOTAL = 3,465.76 SQ.FT.
	DESCRIPTION	DIMENSIONS (MM)	DIMENSIONS (MM)	DIMENSIONS (MM)	DIMENSIONS (MM)
1	LIVING ROOM	7450 x 4250	7450 x 4250	7450 x 4250	7450 x 4250
2	DINING ROOM	5900 x 4750	5900 x 4850	5900 x 5000	5900 x 5200
3	KITCHEN	4700 x 5400	4700 x 5600	4700 x 5750	4700 x 5900
4	MASTER BEDROOM	4200 x 5100	4200 x 5350	4200 x 5550	4200 x 5700
4A	M. BEDROOM BATHROOM	3700 x 4100	3700 x 4100	3700 x 4100	3700 x 4100
5	BEDROOM - 01	4050 x 3400	4050 x 3500	4050 x 3500	4050 x 3700
5A	BEDROOM - 01 BATHROOM	2250 x 2100	2250 x 2200	2250 x 2350	2250 x 2350
6	BEDROOM - 02	3750 x 3300	3750 x 3500	3750 x 3500	3750 x 3550
6A	BEDROOM - 02 BATHROOM	2300 x 2050	2300 x 2050	2300 x 2250	2300 x 2350

		UNIT NO. B3801 SUITE = 3,090.96 SQ.FT. BALCONY = 419.15 SQ.FT. TOTAL = 3,510.11 SQ.FT.	UNIT NO. B3901 SUITE = 3,135.20 SQ.FT. BALCONY = 436.37 SQ.FT. TOTAL = 3,571.57 SQ.FT.	UNIT NO. B4001 SUITE = 3,178.15 SQ.FT. BALCONY = 438.63 SQ.FT. TOTAL = 3,616.78 SQ.FT.	UNIT NO. B4101 SUITE = 3,233.05 SQ.FT. BALCONY = 451.55 SQ.FT. TOTAL = 3,684.60 SQ.FT.
	DESCRIPTION	DIMENSIONS (MM)	DIMENSIONS (MM)	DIMENSIONS (MM)	DIMENSIONS (MM)
1	LIVING ROOM	7450 x 4250	7450 x 4250	7450 x 4250	7450 x 4250
2	DINING ROOM	5900 x 5350	5900 x 5500	5900 x 5650	5900 x 5850
3	KITCHEN	4700 x 6050	4700 x 6200	4700 x 6400	4700 x 6600
4	MASTER BEDROOM	4200 x 5850	4200 x 6000	4200 x 6200	4200 x 6400
4A	M. BEDROOM BATHROOM	3700 x 4100	3700 x 4100	3700 x 4100	3700 x 4100
5	BEDROOM - 01	4050 x 3850	4050 x 4000	4050 x 4200	4050 x 4400
5A	BEDROOM - 01 BATHROOM	2250 x 2350	2250 x 2350	2250 x 2350	2250 x 2350
6	BEDROOM - 02	3750 x 3700	3750 x 3850	3750 x 4050	3750 x 4250
6A	BEDROOM - 02 BATHROOM	2300 x 2350	2300 x 2350	2300 x 2350	2300 x 2350

3 BEDROOM APARTMENT

TYPE B (with powder room + balcony)



List of unit numbers with this unit plan:

VIEWS

Palm Jumeirah, Harbour, Sea

B3404, B3504, B3604, B3704, B3804, B3904, B4004, B4104,

Disclaimer: 1. All dimensions are in metric, measured to wall finishes. 2. All materials, dimensions & drawings are approximate. 3. Information is subject to change without notice, at developer's absolute discretion. 4. Actual area may vary from the stated area. 5. Drawing are not to scale. 6. All images used are for illustrative purpose only and do not represent the actual size, features, specifications, fittings and furnishings. 7. The developer reserves the right to make revisions/ alterations, at its absolute discretion, without any liability whatsoever.

3 BEDROOM APARTMENT

AREAS & DIMENSIONS

TYPE B (with powder room + balcony)

		UNIT NO. B3404 SUITE = 2,167.53 SQ.FT. BALCONY = 186.86 SQ.FT. TOTAL = 2,354.39 SQ.FT.	UNIT NO. B3504 SUITE = 2,172.37 SQ.FT. BALCONY = 188.05 SQ.FT. TOTAL = 2,360.42 SQ.FT.	UNIT NO. B3604 SUITE = 2,178.72 SQ.FT. BALCONY = 189.34 SQ.FT. TOTAL = 2,368.06 SQ.FT.	UNIT NO. B3704 SUITE = 2,185.50 SQ.FT. BALCONY = 190.20 SQ.FT. TOTAL = 2,375.70 SQ.FT.
	DESCRIPTION	DIMENSIONS (MM)	DIMENSIONS (MM)	DIMENSIONS (MM)	DIMENSIONS (MM)
1	LIVING ROOM	7300X4300	7300X4300	7350X4300	7350X4300
2	DINING ROOM	3600X4600	3600X4600	3600X4650	3600X4650
3	KITCHEN	2700X4100	2700X4100	2700X4150	2700X4200
4	MASTER BEDROOM	4050X4050	4050X4050	4050X4100	4050X4100
4A	M. BEDROOM BATHROOM	2750X2700	2750X2700	2750X2700	2750X2700
5	BEDROOM - 01	3700X3950	3700X3950	3700X4000	3700X4000
5A	BEDROOM - 01 BATHROOM	3000X2650	3000X2650	3000X2650	3000X2650
6	BEDROOM - 02	4100X4050	4100X4050	4100X4100	4100X4150
6A	BEDROOM - 02 BATHROOM	2800X2600	2800X2600	2800X2600	2800X2600

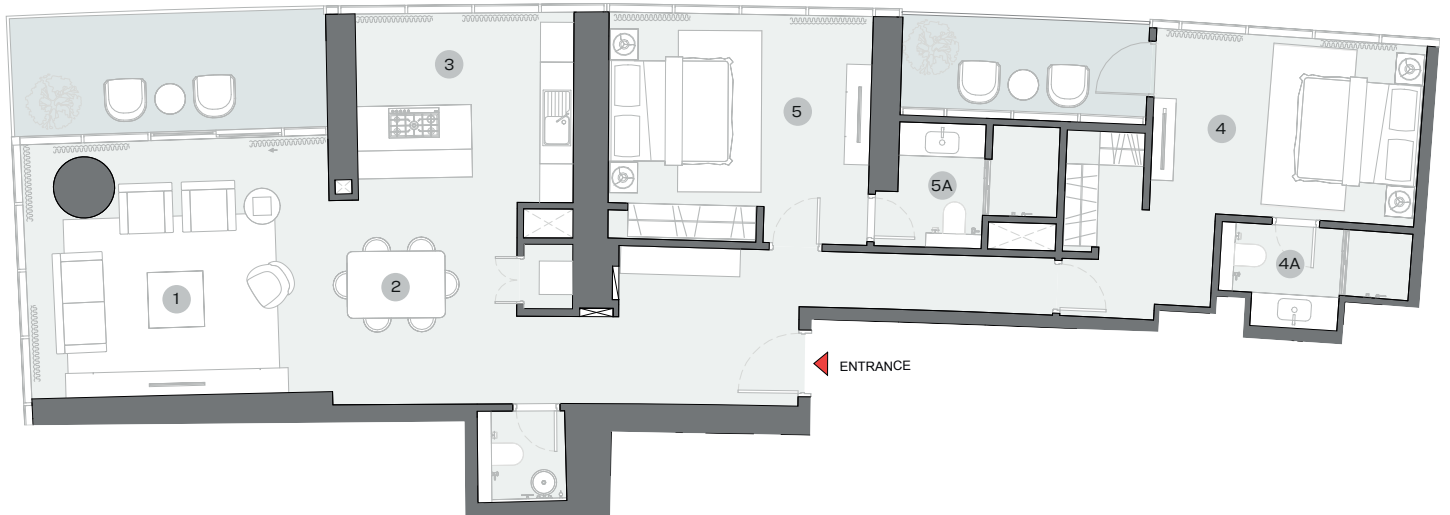
		UNIT NO. B3804 SUITE = 2,192.39 SQ.FT. BALCONY = 192.03 SQ.FT. TOTAL = 2,384.42 SQ.FT.	UNIT NO. B3904 SUITE = 2,200.04 SQ.FT. BALCONY = 193.21 SQ.FT. TOTAL = 2,393.25 SQ.FT.	UNIT NO. B4004 SUITE = 2,206.92 SQ.FT. BALCONY = 194.07 SQ.FT. TOTAL = 2,400.99 SQ.FT.	UNIT NO. B4104 SUITE = 2,214.67 SQ.FT. BALCONY = 194.94 SQ.FT. TOTAL = 2,409.61 SQ.FT.
	DESCRIPTION	DIMENSIONS (MM)	DIMENSIONS (MM)	DIMENSIONS (MM)	DIMENSIONS (MM)
1	LIVING ROOM	7350X4300	7350X4300	7350X4300	7350X4300
2	DINING ROOM	3600X4700	3600X4750	3600X4750	3600X4800
3	KITCHEN	2700X4250	2700X4250	2700X4300	2700X4350
4	MASTER BEDROOM	4050X4150	4050X4200	4050X4200	4050X4250
4A	M. BEDROOM BATHROOM	2750X2700	2750X2700	2750X2700	2750X2700
5	BEDROOM - 01	3700X4050	3700X4100	3700X4100	3700X4150
5A	BEDROOM - 01 BATHROOM	3000X2650	3000X2650	3000X2650	3000X2650
6	BEDROOM - 02	4100X4200	4100X4250	4100X4250	4100X4300
6A	BEDROOM - 02 BATHROOM	2800X2600	2800X2600	2800X2600	2800X2600

2 BEDROOM APARTMENT

TYPE A (with powder room + balcony)



UNIT



List of unit numbers with this unit plan:

VIEWS

Marina Skyline, Marina

B3405, B3505, B3605, B3705, B3805, B3905, B4005, B4105,

Disclaimer: 1. All dimensions are in metric, measured to wall finishes. 2. All materials, dimensions & drawings are approximate. 3. Information is subject to change without notice, at developer's absolute discretion. 4. Actual area may vary from the stated area. 5. Drawing are not to scale. 6. All images used are for illustrative purpose only and do not represent the actual size, features, specifications, fittings and furnishings. 7. The developer reserves the right to make revisions/ alterations, at its absolute discretion, without any liability whatsoever.

2 BEDROOM APARTMENT

TYPE A (with powder room + balcony)

AREAS & DIMENSIONS

		UNIT NO. B3405 SUITE = 1,538.16 SQ.FT. BALCONY = 227.23 SQ.FT. TOTAL = 1,765.39 SQ.FT.	UNIT NO. B3505 SUITE = 1,539.56 SQ.FT. BALCONY = 227.44 SQ.FT. TOTAL = 1,767.00 SQ.FT.	UNIT NO. B3605 SUITE = 1,541.18 SQ.FT. BALCONY = 227.66 SQ.FT. TOTAL = 1,768.84 SQ.FT.	UNIT NO. B3705 SUITE = 1,542.90 SQ.FT. BALCONY = 229.59 SQ.FT. TOTAL = 1,772.49 SQ.FT.
	DESCRIPTION	DIMENSIONS (MM)	DIMENSIONS (MM)	DIMENSIONS (MM)	DIMENSIONS (MM)
1	LIVING ROOM	5350X4550	5400X4550	5400X4550	5400X4550
2	DINING ROOM	3300X3650	3350X3650	3350X3650	3350X3650
3	KITCHEN	3850X3300	3850X3300	3850X3300	3850X3300
4	MASTER BEDROOM	4750X3200	4750X3200	4750X3200	4750X3200
4A	M. BEDROOM BATHROOM	3400X1800	3400X1800	3400X1800	3400X1800
5	BEDROOM - 01	4650X3450	4650X3450	4650X3450	4650X3450
5A	BEDROOM - 01 BATHROOM	2850x2200	2850x2200	2850x2200	2850x2200

		UNIT NO. B3805 SUITE = 1,544.51 SQ.FT. BALCONY = 230.24 SQ.FT. TOTAL = 1,774.75 SQ.FT.	UNIT NO. B3905 SUITE = 1,546.24 SQ.FT. BALCONY = 231.53 SQ.FT. TOTAL = 1,777.77 SQ.FT.	UNIT NO. B4005 SUITE = 1,548.17 SQ.FT. BALCONY = 231.85 SQ.FT. TOTAL = 1,780.02 SQ.FT.	UNIT NO. B4105 SUITE = 1,550.11 SQ.FT. BALCONY = 233.47 SQ.FT. TOTAL = 1,783.58 SQ.FT.
	DESCRIPTION	DIMENSIONS (MM)	DIMENSIONS (MM)	DIMENSIONS (MM)	DIMENSIONS (MM)
1	LIVING ROOM	5450X4550	5500X4550	5500X4550	5600X4550
2	DINING ROOM	3350X3650	3350X3650	3350X3650	3350X3650
3	KITCHEN	3850X3300	3850X3300	3850X3300	3850X3300
4	MASTER BEDROOM	4750X3200	4750X3200	4750X3250	4750X3250
4A	M. BEDROOM BATHROOM	3400X1800	3400X1800	3400X1800	3400X1800
5	BEDROOM - 01	4650X3450	4650X3450	4650X3450	4650X3450
5A	BEDROOM - 01 BATHROOM	2850x2200	2850x2200	2850x2200	2850x2200

2 BEDROOM APARTMENT

TYPE E (with powder room + balcony)

TOTAL SALEABLE AREA

SUITE = 1,749.78 SQ.FT.

BALCONY = 273.30 SQ.FT.

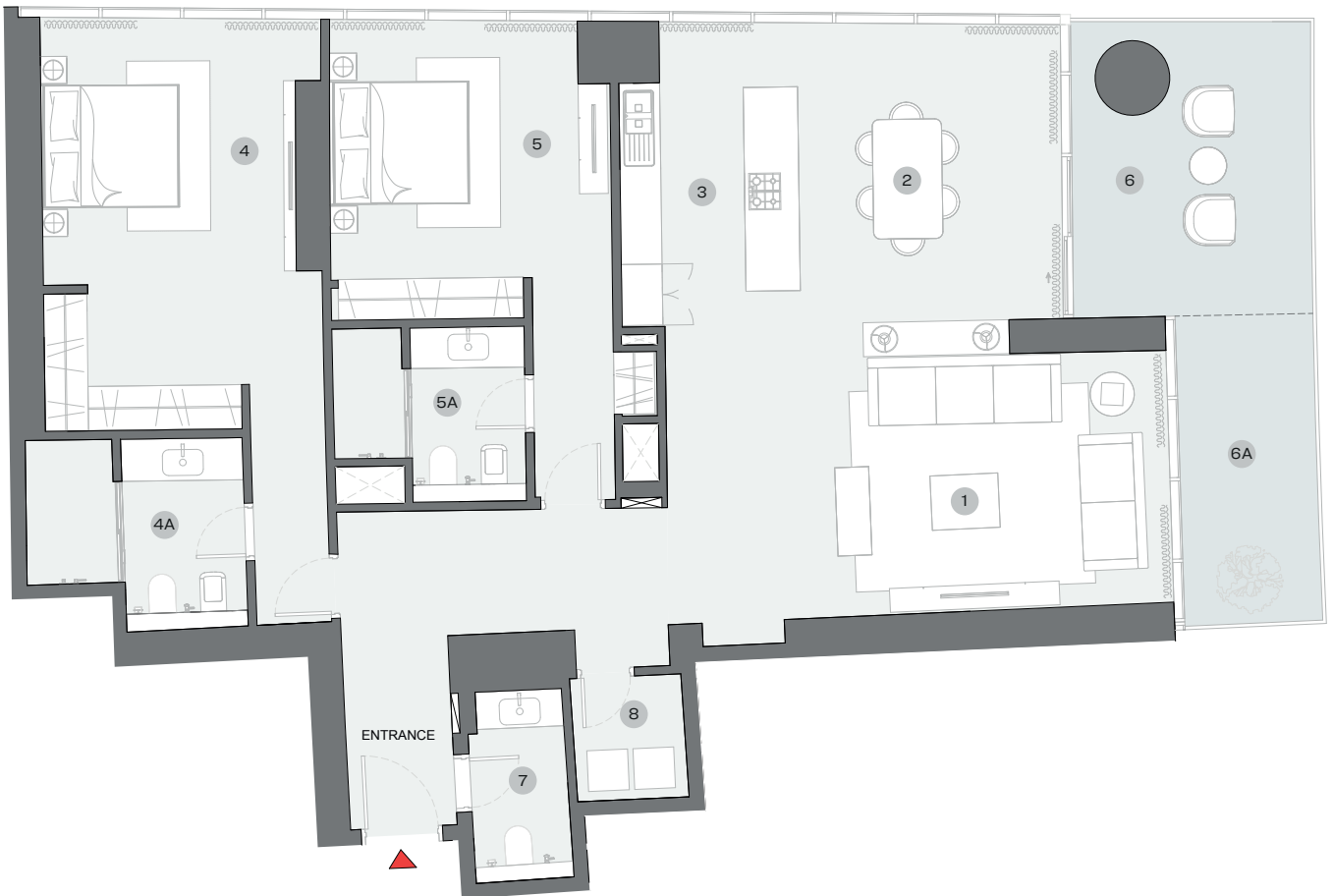
TOTAL = 2,023.08 SQ.FT.



UNIT



LEVEL 11 - 31



List of unit numbers with this unit plan:

VIEWS

Blue waters, Ain Dubai, Palm Jumeirah, Harbour, Sea, Skydive
B1101, B1201, B1301, B1401, B1501, B1601, B1701, B1801, B1901,
B2001, B2101, B2201, B2301, B2401, B2501, B2601, B2701, B2801,
B2901, B3001, B3101

DIMENSIONS (MM)

1 LIVING - 7400 X 3700	4 MASTER BEDROOM - 3700 X 5350	6 BALCONY 1 - 3500 X 4300
2 DINING - 3850 X 4800	4A MASTER BATHROOM - 3200 X 2850	6A BALCONY 2 - 2000 X 4500
3 KITCHEN - 2600 X 4000	5 BEDROOM 2 - 4100 X 4000	7 POWDER - 1450 X 3000
	5A BATHROOM 2 - 2800 X 2550	8 UTILITY - 1650 X 1850

Disclaimer: 1. All dimensions are in metric, measured to wall finishes. 2. All materials, dimensions & drawings are approximate. 3. Information is subject to change without notice, at developer's absolute discretion. 4. Actual area may vary from the stated area. 5. Drawing are not to scale. 6. All images used are for illustrative purpose only and do not represent the actual size, features, specifications, fittings and furnishings. 7. The developer reserves the right to make revisions/ alterations, at its absolute discretion, without any liability whatsoever.

2 BEDROOM APARTMENT

TYPE F (with powder room + balcony)

TOTAL SALEABLE AREA

SUITE = 1,273.48 SQ.FT.

BALCONY = 396.76 SQ.FT.

TOTAL = 1,670.24 SQ.FT.



UNIT



List of unit numbers with this unit plan:

VIEWS

Palm Jumeirah, Harbour, Sea

B1102, B1202, B1302, B1402, B1502, B1602, B1702, B1802, B1902, B2002, B2102, B2202, B2302, B2402, B2502, B2602, B2702, B2802, B2902, B3002, B3102

DIMENSIONS (MM)

1 LIVING - 4200 X 4100	4 MASTER BEDROOM - 3900 X 4450	6 BALCONY 1 - 8100 X 3100
2 DINING - 4300 X 2800	4A MASTER BATHROOM - 3000 X 2600	6A BALCONY 2 - 4650 X 2000
3 KITCHEN - 2800 X 2500	5 BEDROOM 2 - 3650 X 3650	7 POWDER - 1800 X 2200
	5A BATHROOM 2 - 2600 X 2600	8 UTILITY - 850 X 1500

Disclaimer: 1. All dimensions are in metric, measured to wall finishes. 2. All materials, dimensions & drawings are approximate. 3. Information is subject to change without notice, at developer's absolute discretion. 4. Actual area may vary from the stated area. 5. Drawing are not to scale. 6. All images used are for illustrative purpose only and do not represent the actual size, features, specifications, fittings and furnishings. 7. The developer reserves the right to make revisions/ alterations, at its absolute discretion, without any liability whatsoever.

2 BEDROOM APARTMENT

TYPE F (with powder room + balcony)



UNIT



List of unit numbers with this unit plan:

VIEWS

Palm Jumeirah, Harbour, Sea
 B3402, B3502, B3602, B3702, B3802, B3902, B4002, B4102

Disclaimer: 1. All dimensions are in metric, measured to wall finishes. 2. All materials, dimensions & drawings are approximate. 3. Information is subject to change without notice, at developer's absolute discretion. 4. Actual area may vary from the stated area. 5. Drawing are not to scale. 6. All images used are for illustrative purpose only and do not represent the actual size, features, specifications, fittings and furnishings. 7. The developer reserves the right to make revisions/ alterations, at its absolute discretion, without any liability whatsoever.

2 BEDROOM APARTMENT

TYPE F (with powder room + balcony)

AREAS & DIMENSIONS

		UNIT NO. B3402 SUITE = 1,288.98 SQ.FT. BALCONY = 389.33 SQ.FT. TOTAL = 1,678.31 SQ.FT.	UNIT NO. B3502 SUITE = 1,288.98 SQ.FT. BALCONY = 389.33 SQ.FT. TOTAL = 1,678.31 SQ.FT.	UNIT NO. B3602 SUITE = 1,288.98 SQ.FT. BALCONY = 389.33 SQ.FT. TOTAL = 1,678.31 SQ.FT.	UNIT NO. B3702 SUITE = 1,288.98 SQ.FT. BALCONY = 389.33 SQ.FT. TOTAL = 1,678.31 SQ.FT.
	DESCRIPTION	DIMENSIONS (MM)	DIMENSIONS (MM)	DIMENSIONS (MM)	DIMENSIONS (MM)
1	LIVING ROOM	4200 x 4050	4200 x 4050	4200 x 4100	4200 x 4100
2	DINING ROOM	4250 x 2800	4250 x 2800	4250 x 2800	4250 x 2800
3	KITCHEN	2850 x 2500	2850 x 2500	2850 x 2500	2850 x 2500
4	MASTER BEDROOM	3850 x 4450	3850 x 4450	3850 x 4450	3850 x 4450
4A	M. BEDROOM BATHROOM	2950 x 2600	2950 x 2600	2950 x 2600	2950 x 2600
5	BEDROOM - 01	3550 x 3650	3550 x 3650	3550 x 3650	3550 x 3650
5A	BEDROOM - 01 BATHROOM	2900 x 2600	2900 x 2600	2900 x 2600	2900 x 2600

		UNIT NO. B3802 SUITE = 1,288.98 SQ.FT. BALCONY = 389.33 SQ.FT. TOTAL = 1,678.31 SQ.FT.	UNIT NO. B3902 SUITE = 1,288.98 SQ.FT. BALCONY = 389.33 SQ.FT. TOTAL = 1,678.31 SQ.FT.	UNIT NO. B4002 SUITE = 1,288.98 SQ.FT. BALCONY = 389.33 SQ.FT. TOTAL = 1,678.31 SQ.FT.	UNIT NO. B4102 SUITE = 1,288.98 SQ.FT. BALCONY = 389.33 SQ.FT. TOTAL = 1,678.31 SQ.FT.
	DESCRIPTION	DIMENSIONS (MM)	DIMENSIONS (MM)	DIMENSIONS (MM)	DIMENSIONS (MM)
1	LIVING ROOM	4200 x 4100	4200 x 4100	4200 x 4100	4200 x 4100
2	DINING ROOM	4250 x 2800	4250 x 2800	4250 x 2800	4250 x 2800
3	KITCHEN	2850 x 2500	2850 x 2500	2850 x 2500	2850 x 2500
4	MASTER BEDROOM	3850 x 4450	3850 x 4450	3850 x 4450	3850 x 4450
4A	M. BEDROOM BATHROOM	2950 x 2600	2950 x 2600	2950 x 2600	2950 x 2600
5	BEDROOM - 01	3550 x 3650	3550 x 3650	3550 x 3650	3550 x 3650
5A	BEDROOM - 01 BATHROOM	2900 x 2600	2900 x 2600	2900 x 2600	2900 x 2600

2 BEDROOM APARTMENT

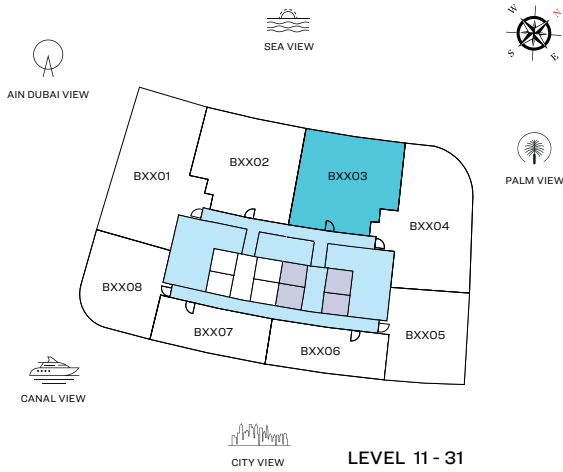
TYPE G (with powder room + balcony)

TOTAL SALEABLE AREA

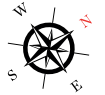
SUITE = 1,270.57 SQ.FT.

BALCONY = 394.50 SQ.FT.

TOTAL = 1,665.07 SQ.FT.



UNIT



List of unit numbers with this unit plan:

VIEWS

Palm Jumeirah, Harbour, Sea

B1103, B1203, B1303, B1403, B1503, B1603, B1703, B1803, B1903, B2003, B2103, B2203, B2303, B2403, B2503, B2603, B2703, B2803, B2903, B3003, B3103

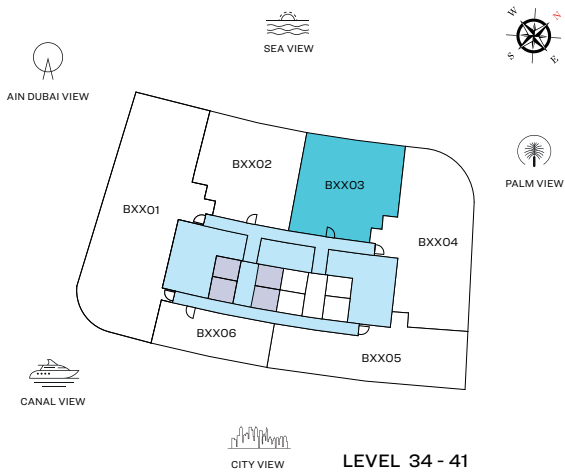
DIMENSIONS (MM)

1 LIVING - 4150 X 4050	4 MASTER BEDROOM - 3800 X 4450	6 BALCONY 1 - 8000 X 3100
2 DINING - 4300 X 2800	4A MASTER BATHROOM - 3000 X 2600	6A BALCONY 2 - 4600 X 2000
3 KITCHEN - 2850 X 2500	5 BEDROOM 2 - 3800 X 3650	7 POWDER - 1850 X 1950
	5A BATHROOM 2 - 2600 X 2600	8 UTILITY - 850 X 1500

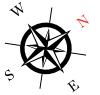
Disclaimer: 1. All dimensions are in metric, measured to wall finishes. 2. All materials, dimensions & drawings are approximate. 3. Information is subject to change without notice, at developer's absolute discretion. 4. Actual area may vary from the stated area. 5. Drawing are not to scale. 6. All images used are for illustrative purpose only and do not represent the actual size, features, specifications, fittings and furnishings. 7. The developer reserves the right to make revisions/ alterations, at its absolute discretion, without any liability whatsoever.

2 BEDROOM APARTMENT

TYPE G (with powder room + balcony)



UNIT



List of unit numbers with this unit plan:

VIEWS

Palm Jumeirah, Harbour, Sea
 B3403, B3503, B3603, B3703, B3803, B3903, B4003, B4103

Disclaimer: 1. All dimensions are in metric, measured to wall finishes. 2. All materials, dimensions & drawings are approximate. 3. Information is subject to change without notice, at developer's absolute discretion. 4. Actual area may vary from the stated area. 5. Drawing are not to scale. 6. All images used are for illustrative purpose only and do not represent the actual size, features, specifications, fittings and furnishings. 7. The developer reserves the right to make revisions/ alterations, at its absolute discretion, without any liability whatsoever.

2 BEDROOM APARTMENT

TYPE G (with powder room + balcony)

AREAS & DIMENSIONS

DESCRIPTION	UNIT NO. B3403	UNIT NO. B3503	UNIT NO. B3603	UNIT NO. B3703
	SUITE = 1,283.70 SQ.FT. BALCONY = 386.64 SQ.FT. TOTAL = 1,670.34 SQ.FT.	SUITE = 1,283.70 SQ.FT. BALCONY = 386.64 SQ.FT. TOTAL = 1,670.34 SQ.FT.	SUITE = 1,283.70 SQ.FT. BALCONY = 386.64 SQ.FT. TOTAL = 1,670.34 SQ.FT.	SUITE = 1,283.70 SQ.FT. BALCONY = 386.64 SQ.FT. TOTAL = 1,670.34 SQ.FT.
	DIMENSIONS (MM)	DIMENSIONS (MM)	DIMENSIONS (MM)	DIMENSIONS (MM)
1 LIVING ROOM	4150 x 4050	4150X4050	4150X4050	4150X4100
2 DINING ROOM	4250 x 2800	4250X2800	4250X2800	4250X2800
3 KITCHEN	2850 x 2500	2850X2500	2850X2500	2850X2500
4 MASTER BEDROOM	3850 x 4450	3850X4450	3850X4450	3850X4450
4A M. BEDROOM BATHROOM	2950 x 2550	2950X2550	2950X2550	2950X2550
5 BEDROOM - 01	3600 x 3700	3600X3700	3600X3700	3600X3700
5A BEDROOM - 01 BATHROOM	2800 x 2550	2800X2550	2800X2550	2800X2550

DESCRIPTION	UNIT NO. B3803	UNIT NO. B3903	UNIT NO. B4003	UNIT NO. B4103
	SUITE = 1,283.70 SQ.FT. BALCONY = 386.64 SQ.FT. TOTAL = 1,670.34 SQ.FT.	SUITE = 1,283.70 SQ.FT. BALCONY = 386.64 SQ.FT. TOTAL = 1,670.34 SQ.FT.	SUITE = 1,283.70 SQ.FT. BALCONY = 386.64 SQ.FT. TOTAL = 1,670.34 SQ.FT.	SUITE = 1,283.70 SQ.FT. BALCONY = 386.64 SQ.FT. TOTAL = 1,670.34 SQ.FT.
	DIMENSIONS (MM)	DIMENSIONS (MM)	DIMENSIONS (MM)	DIMENSIONS (MM)
1 LIVING ROOM	4150X4100	4150X4100	4150X4100	4150X4100
2 DINING ROOM	4250X2800	4250X2800	4250X2800	4250X2800
3 KITCHEN	2850X2500	2850X2500	2850X2500	2850X2500
4 MASTER BEDROOM	3850X4450	3850X4450	3850X4450	3850X4450
4A M. BEDROOM BATHROOM	2950X2550	2950X2550	2950X2550	2950X2550
5 BEDROOM - 01	3600X3700	3600X3700	3600X3700	3600X3700
5A BEDROOM - 01 BATHROOM	2800X2550	2800X2550	2800X2550	2800X2550

2 BEDROOM APARTMENT

TYPE H (with powder room + balcony)

TOTAL SALEABLE AREA

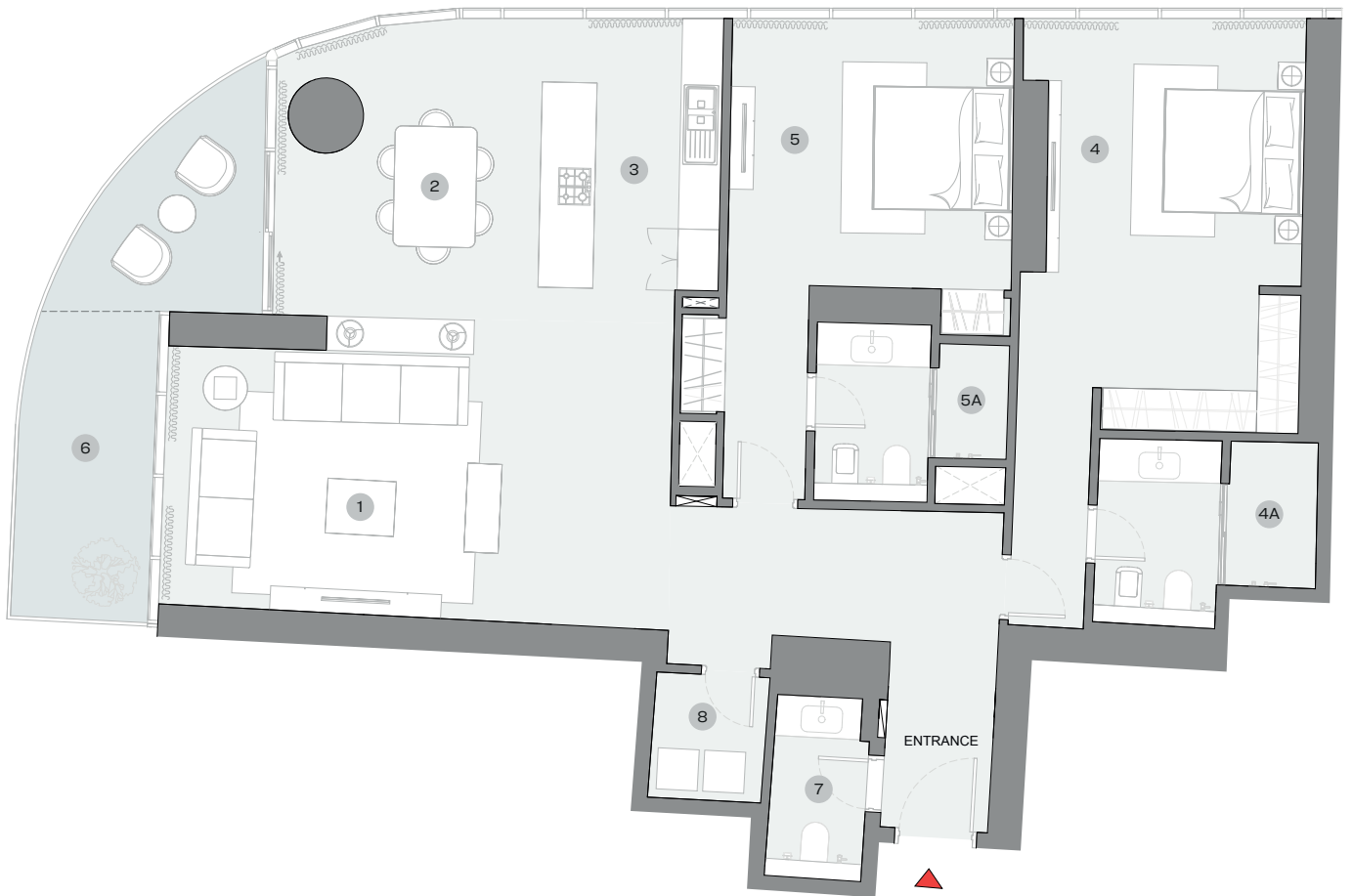
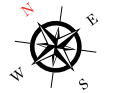
SUITE = 1,740.63 SQ.FT.

BALCONY = 189.65 SQ.FT.

TOTAL = 1,930.28 SQ.FT.



UNIT



List of unit numbers with this unit plan:

VIEWS

Palm Jumeirah, Harbour, Sea

B1104, B1204, B1304, B1404, B1504, B1604, B1704, B1804, B1904, B2004, B2104, B2204, B2304, B2404, B2504, B2604, B2704, B2804, B2904, B3004, B3104

DIMENSIONS (MM)

1 LIVING - 7400 X 3850	4 MASTER BEDROOM - 3700 X 5350	6 BALCONY - 2000 X 4550
2 DINING - 4000 X 4900	4A MASTER BATHROOM - 3200 X 2700	7 POWDER - 1400 X 2850
3 KITCHEN - 2600 X 3950	5 BEDROOM 2 - 4150 X 3850	8 UTILITY - 1650 X 1850
	5A BATHROOM 2 - 2800 X 2550	

Disclaimer: 1. All dimensions are in metric, measured to wall finishes. 2. All materials, dimensions & drawings are approximate. 3. Information is subject to change without notice, at developer's absolute discretion. 4. Actual area may vary from the stated area. 5. Drawing are not to scale. 6. All images used are for illustrative purpose only and do not represent the actual size, features, specifications, fittings and furnishings. 7. The developer reserves the right to make revisions/ alterations, at its absolute discretion, without any liability whatsoever.

1 BEDROOM + STUDY APARTMENT

TYPE D (with powder room + balcony)

TOTAL SALEABLE AREA

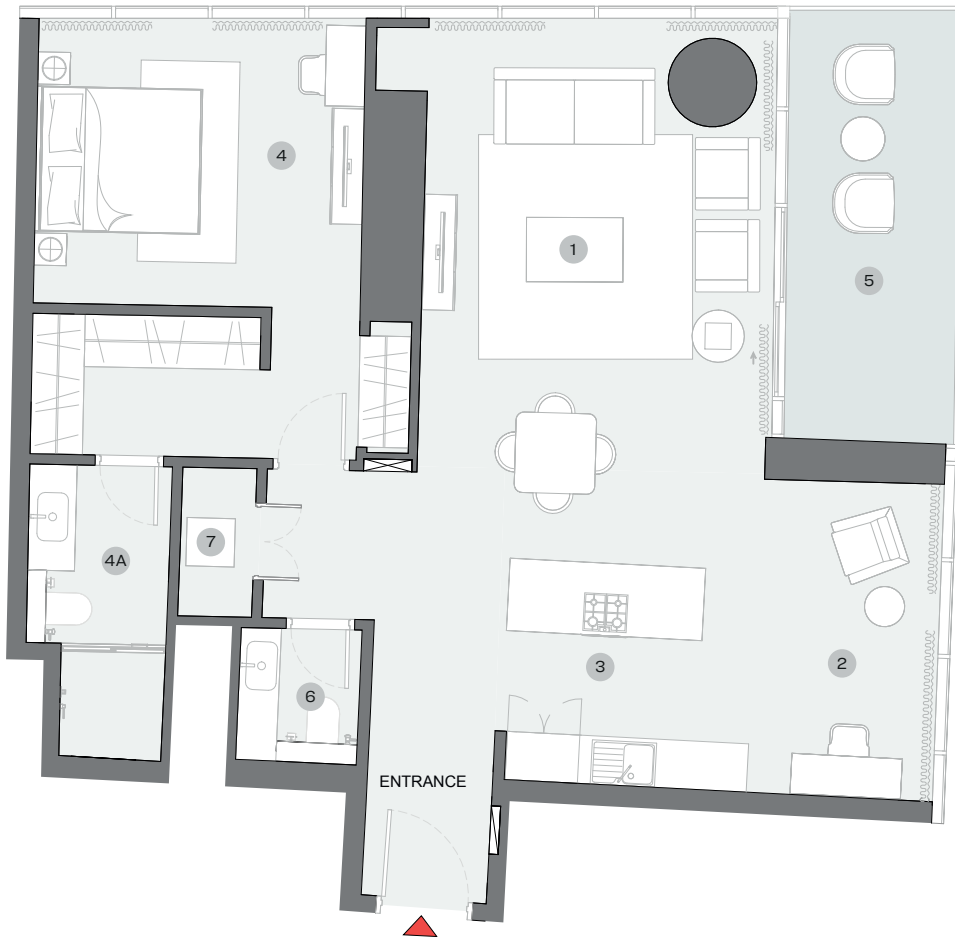
SUITE = 1,102.21 SQ.FT.

BALCONY = 131.43 SQ.FT.

TOTAL = 1,233.64 SQ.FT.



UNIT



List of unit numbers with this unit plan:

VIEWS

Marina Skyline

B1105, B1205, B1305, B1405, B1505, B1605, B1705, B1805, B1905, B2005, B2105, B2205, B2305, B2405, B2505, B2605, B2705, B2805, B2905, B3005, B3105

DIMENSIONS (MM)

1 LIVING/DINING - 4350 X 6700	4 BEDROOM - 4050 X 3550	5 BALCONY - 2150 X 5250
2 STUDY - 2650 X 3950	4A BATHROOM - 1800 X 3600	6 POWDER - 1500 X 1750
3 KITCHEN - 2650 X 2750	7 UTILITY - 900 X 1850	

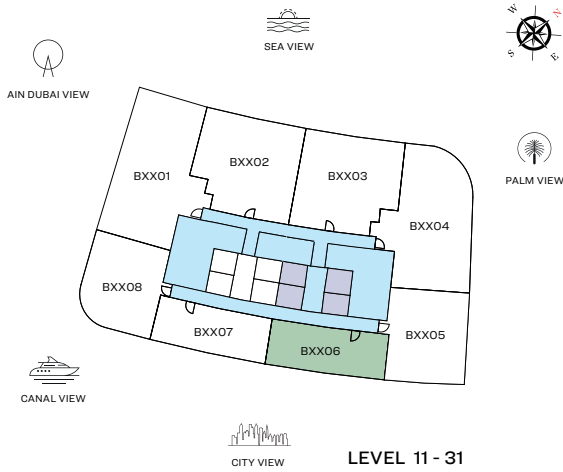
Disclaimer: 1. All dimensions are in metric, measured to wall finishes. 2. All materials, dimensions & drawings are approximate. 3. Information is subject to change without notice, at developer's absolute discretion. 4. Actual area may vary from the stated area. 5. Drawing are not to scale. 6. All images used are for illustrative purpose only and do not represent the actual size, features, specifications, fittings and furnishings. 7. The developer reserves the right to make revisions/ alterations, at its absolute discretion, without any liability whatsoever.

1 BEDROOM APARTMENT

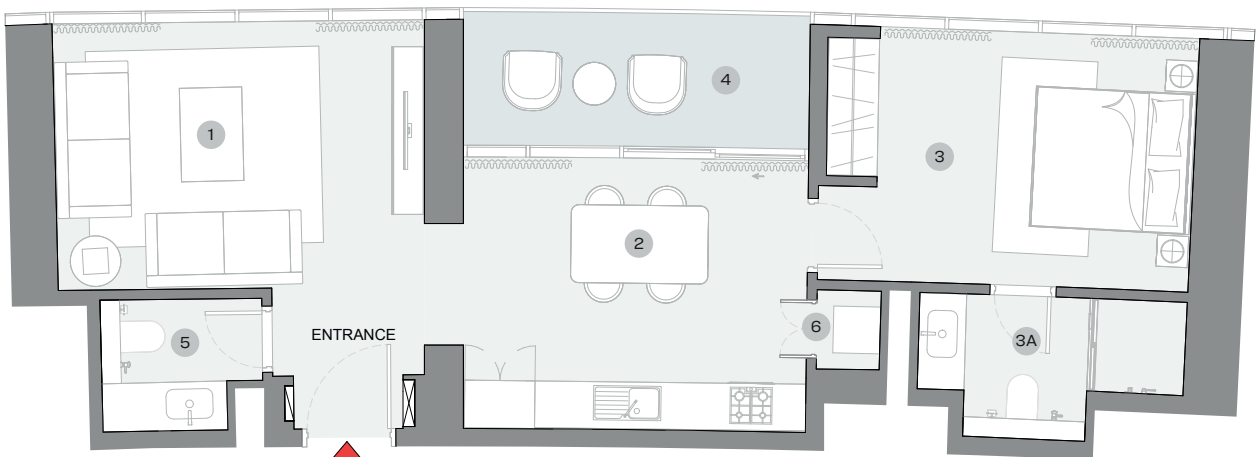
TYPE E (with powder room + balcony)

TOTAL SALEABLE AREA

SUITE = 748.85 SQ.FT.
BALCONY = 92.57 SQ.FT.
TOTAL = 841.41 SQ.FT.



UNIT



List of unit numbers with this unit plan:

VIEWS

Marina Skyline
B1106, B1206, B1306, B1406, B1506, B1606, B1706, B1806, B1906, B2006, B2106, B2206, B2306, B2406, B2506, B2606, B2706, B2806, B2906, B3006, B3106

DIMENSIONS (MM)

1 LIVING - 4700 X 3450	3 BEDROOM - 4000 X 3250	4 BALCONY - 4650 X 1700
2 KITCHEN/DINING - 4400 X 3500	3A BATHROOM - 3400 X 1850	5 POWDER - 2050 X 1700
		6 UTILITY - 800 X 1000

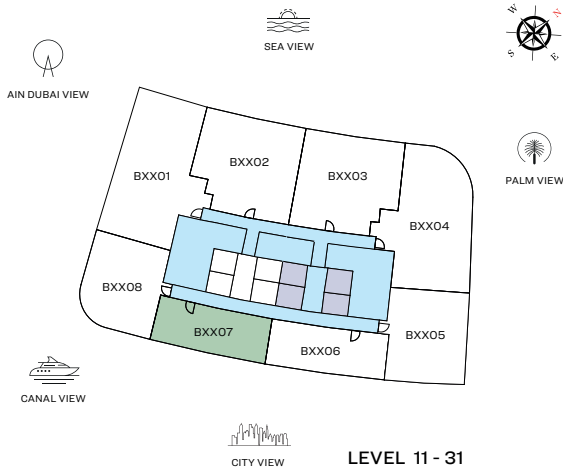
Disclaimer: 1. All dimensions are in metric, measured to wall finishes. 2. All materials, dimensions & drawings are approximate. 3. Information is subject to change without notice, at developer's absolute discretion. 4. Actual area may vary from the stated area. 5. Drawing are not to scale. 6. All images used are for illustrative purpose only and do not represent the actual size, features, specifications, fittings and furnishings. 7. The developer reserves the right to make revisions/ alterations, at its absolute discretion, without any liability whatsoever.

1 BEDROOM APARTMENT

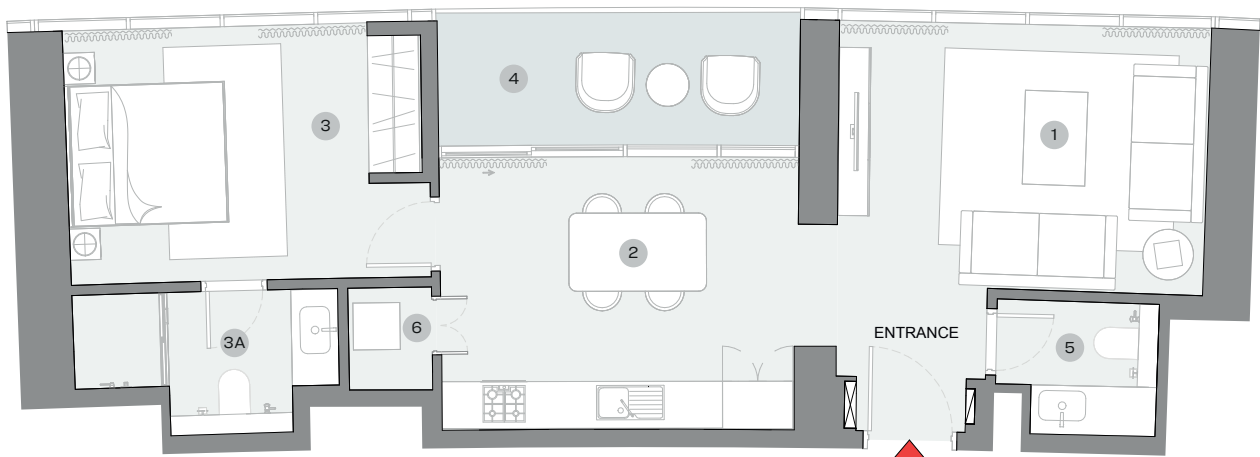
TYPE F (with powder room + balcony)

TOTAL SALEABLE AREA

SUITE = 754.38 SQ.FT.
BALCONY = 96.23 SQ.FT.
TOTAL = 850.61 SQ.FT.



UNIT



List of unit numbers with this unit plan:

VIEWS

Marina Skyline
B1107, B1207, B1307, B1407, B1507, B1607, B1707, B1807, B1907,
B2007, B2107, B2207, B2307, B2407, B2507, B2607, B2707,
B2807, B2907, B3007, B3107

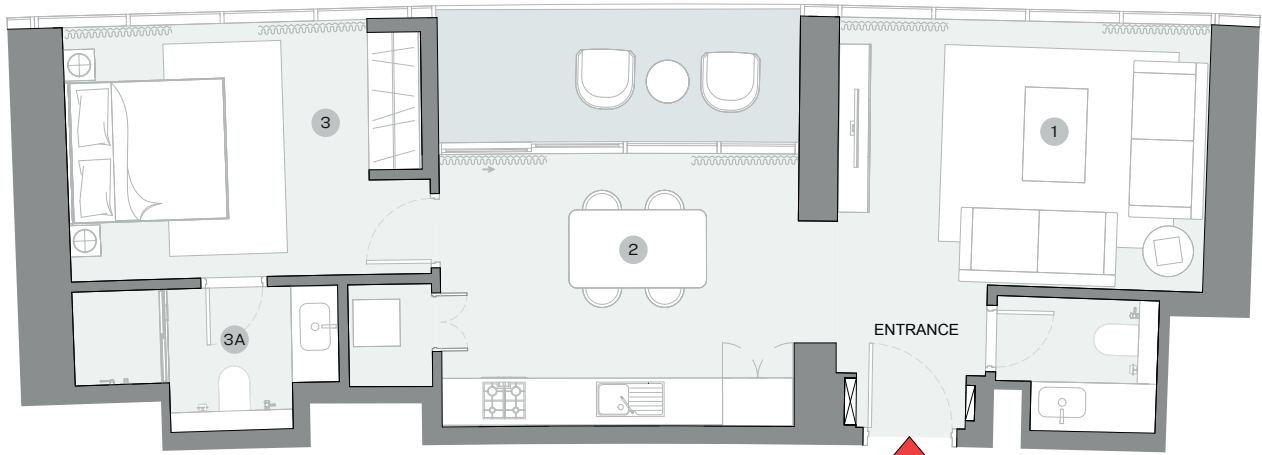
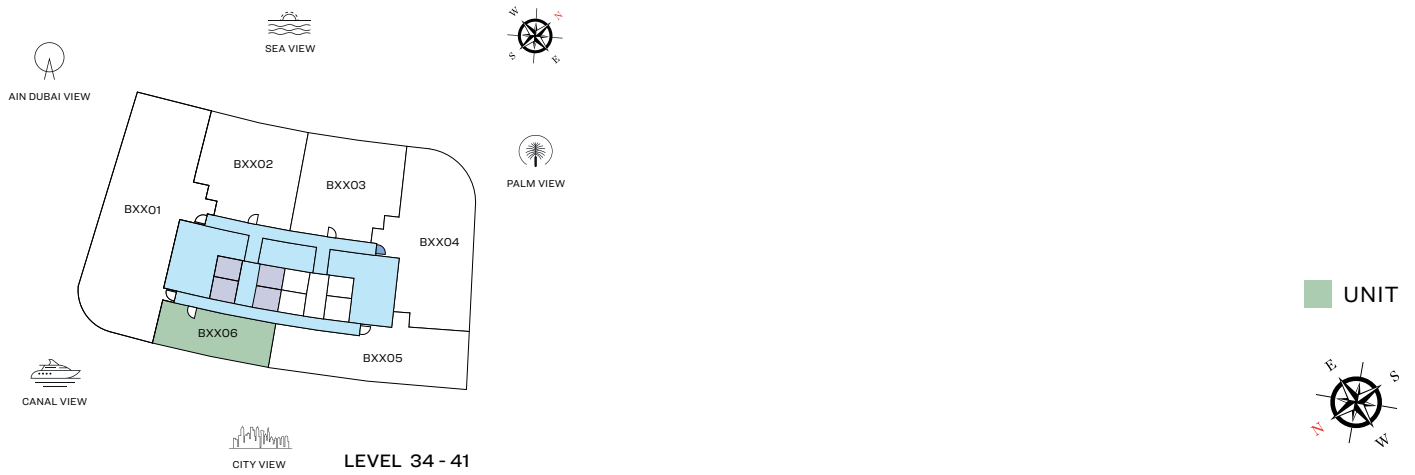
DIMENSIONS (MM)

1 LIVING - 4750 X 3400	3 BEDROOM - 3850 X 3250	4 BALCONY - 4650 X 1700
2 KITCHEN/DINING - 4550 X 3500	3A BATHROOM - 3400 X 1850	5 POWDER - 2100 X 1750
		6 UTILITY - 1050 X 1300

Disclaimer: 1. All dimensions are in metric, measured to wall finishes. 2. All materials, dimensions & drawings are approximate. 3. Information is subject to change without notice, at developer's absolute discretion. 4. Actual area may vary from the stated area. 5. Drawing are not to scale. 6. All images used are for illustrative purpose only and do not represent the actual size, features, specifications, fittings and furnishings. 7. The developer reserves the right to make revisions/ alterations, at its absolute discretion, without any liability whatsoever.

1 BEDROOM APARTMENT

TYPE F (with powder room + balcony)



List of unit numbers with this unit plan:

VIEWS

Marina Skyline, Marina

B3406, B3506, B3606, B3706, B3806, B3906, B4006, B4106

Disclaimer: 1. All dimensions are in metric, measured to wall finishes. 2. All materials, dimensions & drawings are approximate. 3. Information is subject to change without notice, at developer's absolute discretion. 4. Actual area may vary from the stated area. 5. Drawing are not to scale. 6. All images used are for illustrative purpose only and do not represent the actual size, features, specifications, fittings and furnishings. 7. The developer reserves the right to make revisions/ alterations, at its absolute discretion, without any liability whatsoever.

1 BEDROOM APARTMENT

TYPE F (with powder room + balcony)

AREAS & DIMENSIONS

		UNIT NO. B3406 SUITE = 754.23 SQ.FT. BALCONY = 95.15 SQ.FT. TOTAL = 849.38 SQ.FT.	UNIT NO. B3506 SUITE = 754.23 SQ.FT. BALCONY = 95.15 SQ.FT. TOTAL = 849.38 SQ.FT.	UNIT NO. B3606 SUITE = 754.23 SQ.FT. BALCONY = 95.15 SQ.FT. TOTAL = 849.38 SQ.FT.	UNIT NO. B3706 SUITE = 754.23 SQ.FT. BALCONY = 95.15 SQ.FT. TOTAL = 849.38 SQ.FT.
DESCRIPTION	DIMENSIONS (MM)	DIMENSIONS (MM)	DIMENSIONS (MM)	DIMENSIONS (MM)	DIMENSIONS (MM)
1 LIVING ROOM	4650X3350	4650X3350	4650X3350	4650X3350	4650X3350
2 KITCHEN/DINING ROOM	4350X3450	4350X3450	4350X3450	4350X3450	4350X3450
3 MASTER BEDROOM	3850X3200	3850X3200	3850X3200	3850X3200	3850X3200
3A M. BEDROOM BATHROOM	3350X1800	3350X1800	3350X1800	3350X1800	3350X1800

		UNIT NO. B3806 SUITE = 754.23 SQ.FT. BALCONY = 95.15 SQ.FT. TOTAL = 849.38 SQ.FT.	UNIT NO. B3906 SUITE = 754.23 SQ.FT. BALCONY = 95.15 SQ.FT. TOTAL = 849.38 SQ.FT.	UNIT NO. B4006 SUITE = 754.23 SQ.FT. BALCONY = 95.15 SQ.FT. TOTAL = 849.38 SQ.FT.	UNIT NO. B4106 SUITE = 754.23 SQ.FT. BALCONY = 95.15 SQ.FT. TOTAL = 849.38 SQ.FT.
DESCRIPTION	DIMENSIONS (MM)	DIMENSIONS (MM)	DIMENSIONS (MM)	DIMENSIONS (MM)	DIMENSIONS (MM)
1 LIVING ROOM	4650X3350	4650X3350	4650X3350	4650X3350	4650X3350
2 KITCHEN/DINING ROOM	4350X3450	4350X3450	4350X3450	4350X3450	4350X3450
3 MASTER BEDROOM	3850X3200	3850X3200	3850X3200	3850X3200	3850X3200
3A M. BEDROOM BATHROOM	3350X1800	3350X1800	3350X1800	3350X1800	3350X1800

1 BEDROOM + STUDY APARTMENT

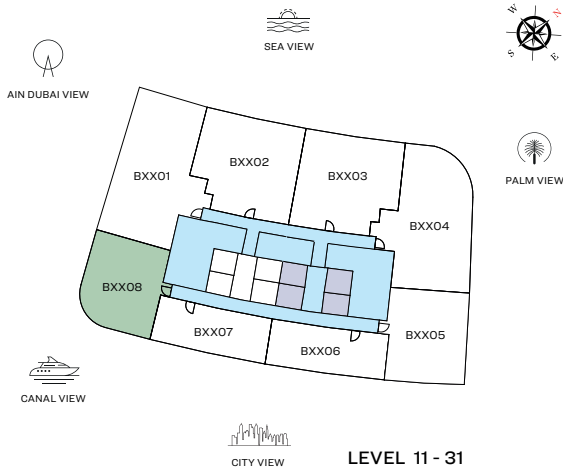
TYPE G (with powder room + balcony)

TOTAL SALEABLE AREA

SUITE = 1,086.46 SQ.FT.

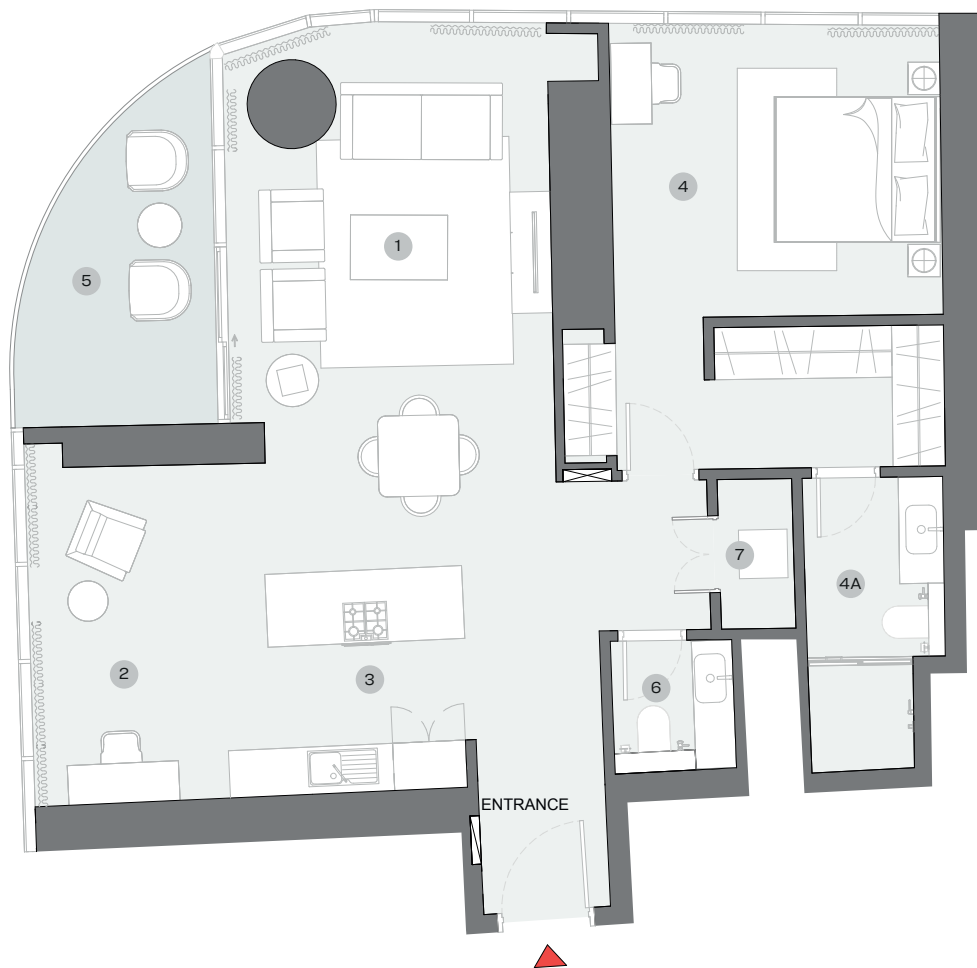
BALCONY = 104.15 SQ.FT.

TOTAL = 1,190.62 SQ.FT.



LEVEL 11 - 31

UNIT



List of unit numbers with this unit plan:

VIEWS

Marina, Marina Skyline, Sea

B1108, B1208, B1308, B1408, B1508, B1608, B1708, B1808, B1908,
B2008, B2108, B2208, B2308, B2408, B2508, B2608, B2708,
B2808, B2908, B3008, B3108

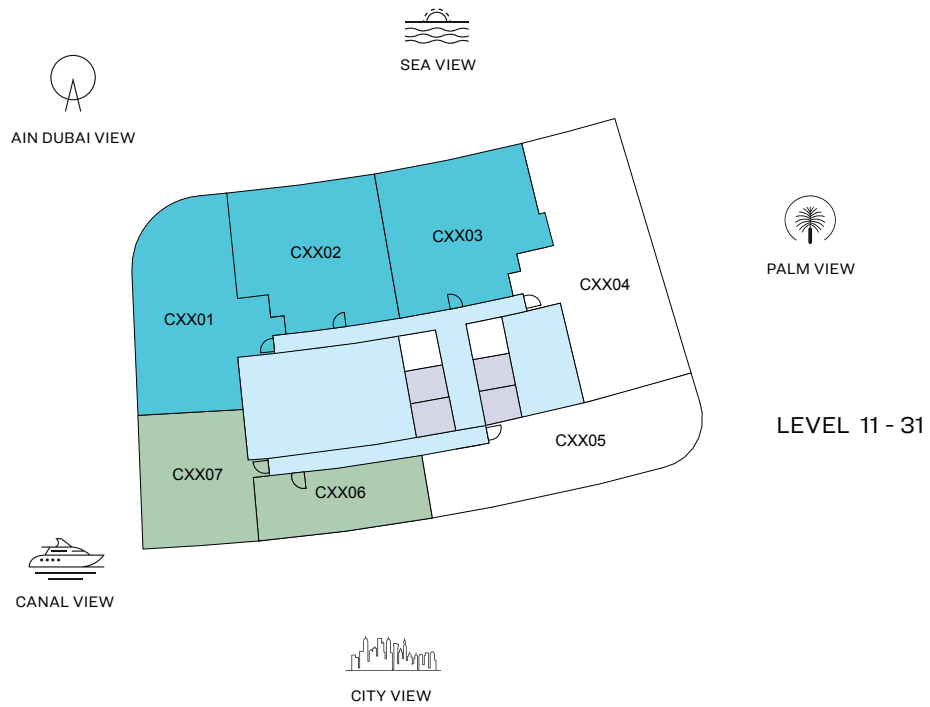
DIMENSIONS (MM)

1 LIVING/DINING - 4000 X 6650	4 BEDROOM - 4100 X 3550	5 BALCONY
2 STUDY - 2650 X 4100	4A BATHROOM - 1750 X 3600	6 POWDER - 1500 X 1600
3 KITCHEN - 2650 X 2700		7 UTILITY - 900 X 1850

Disclaimer: 1. All dimensions are in metric, measured to wall finishes. 2. All materials, dimensions & drawings are approximate. 3. Information is subject to change without notice, at developer's absolute discretion. 4. Actual area may vary from the stated area. 5. Drawing are not to scale. 6. All images used are for illustrative purpose only and do not represent the actual size, features, specifications, fittings and furnishings. 7. The developer reserves the right to make revisions/ alterations, at its absolute discretion, without any liability whatsoever.

FLOOR PLAN LAYOUT

TOWER C



- 1 BED UNIT
- 2 BED UNIT
- LOBBIES, CORRIDORS & STAIRS
- LIFTS

Disclaimer: 1. All dimensions are in metric, measured to wall finishes. 2. All materials, dimensions & drawings are approximate. 3. Information is subject to change without notice, at developer's absolute discretion. 4. Actual area may vary from the stated area. 5. Drawing are not to scale. 6. All images used are for illustrative purpose only and do not represent the actual size, features, specifications, fittings and furnishings. 7. The developer reserves the right to make revisions/ alterations, at its absolute discretion, without any liability whatsoever.

1 BEDROOM APARTMENT

TYPE A (with powder room + balcony)

TOTAL SALEABLE AREA

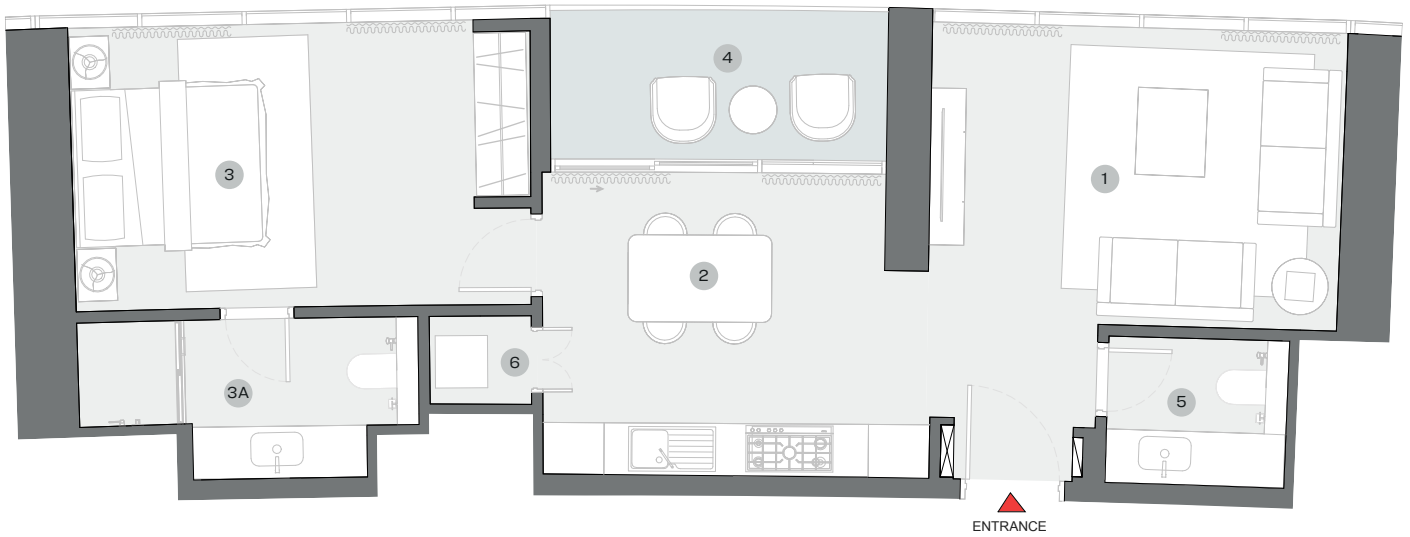
SUITE = 769.30 SQ.FT

BALCONY = 81.91 SQ.FT

TOTAL = 851.21 SQ.FT



UNIT



List of unit numbers with this unit plan:

VIEWS

Marina Skyline

C1106, C1206, C1306, C1406, C1506, C1606, C1706, C1806, C1906, C2006, C2106, C2206, C2306, C2406, C2506, C2606, C2706, C2806, C2906, C3006, C3106

DIMENSIONS (MM)

1 LIVING - 4700 X 3400	3 BEDROOM - 4600 X 3250	4 BALCONY - 3900 X 1700
2 KITCHEN/DINING - 3950 X 3450	3A BATHROOM - 3900 X 1850	5 POWDER - 2050 X 1700
		6 UTILITY - 1150 X 1000

Disclaimer: 1. All dimensions are in metric, measured to wall finishes. 2. All materials, dimensions & drawings are approximate. 3. Information is subject to change without notice, at developer's absolute discretion. 4. Actual area may vary from the stated area. 5. Drawing are not to scale. 6. All images used are for illustrative purpose only and do not represent the actual size, features, specifications, fittings and furnishings. 7. The developer reserves the right to make revisions/ alterations, at its absolute discretion, without any liability whatsoever.

1 BEDROOM APARTMENT

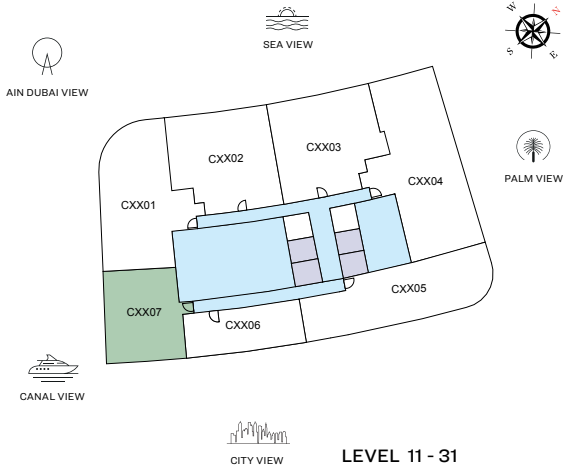
TYPE B (with powder room + study room + balcony)

TOTAL SALEABLE AREA

SUITE = 1,107.93 SQ.FT

BALCONY = 131.21 SQ.FT

TOTAL = 1,239.14 SQ.FT



UNIT



List of unit numbers with this unit plan:

VIEWS

Marina Skyline

C1107, C1207, C1307, C1407, C1507, C1607, C1707, C1807, C1907, C2007, C2107, C2207, C2307, C2407, C2507, C2607, C2707, C2807, C2907, C3007, C3107

DIMENSIONS (MM)

1 LIVING - 4700 X 6750	3 BEDROOM - 3800 X 3550	5 STUDY - 3000 X 3200
2 KITCHEN/DINING - 2800 X 2750	3A BATHROOM - 1700 X 3550	6 POWDER - 1800 X 1950
	4 BALCONY - 2150 X 5300	7 UTILITY - 900 X 1550

Disclaimer: 1. All dimensions are in metric, measured to wall finishes. 2. All materials, dimensions & drawings are approximate. 3. Information is subject to change without notice, at developer's absolute discretion. 4. Actual area may vary from the stated area. 5. Drawing are not to scale. 6. All images used are for illustrative purpose only and do not represent the actual size, features, specifications, fittings and furnishings. 7. The developer reserves the right to make revisions/ alterations, at its absolute discretion, without any liability whatsoever.

2 BEDROOM APARTMENT

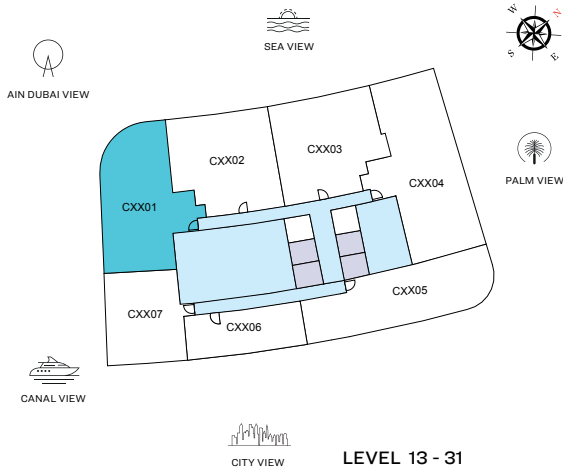
TYPE A (with powder room + balcony)

TOTAL SALEABLE AREA

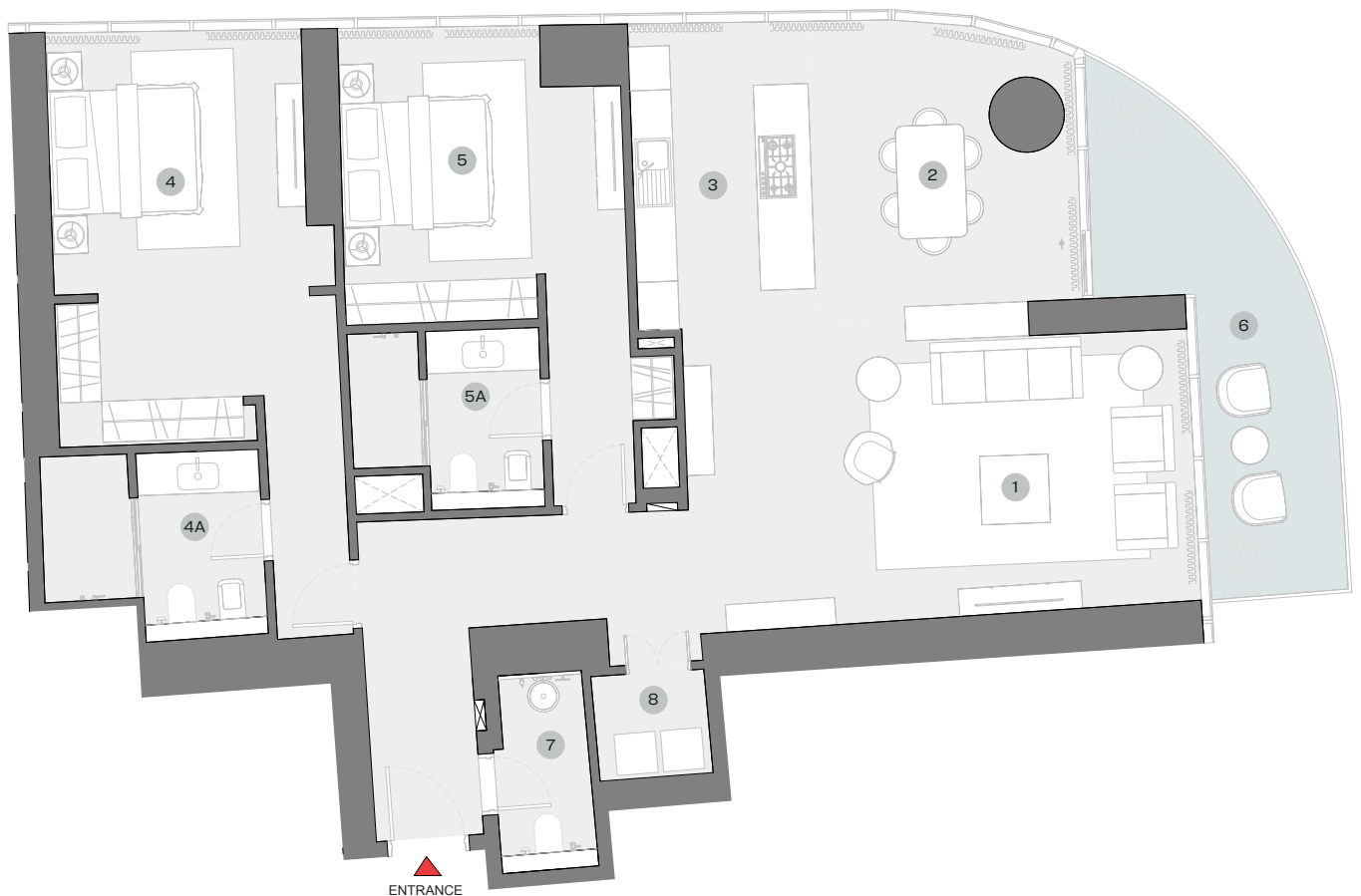
SUITE = 1,728.04 SQ.FT

BALCONY = 186.11 SQ.FT

TOTAL = 1,914.15 SQ.FT



UNIT



List of unit numbers with this unit plan:

VIEWS

Blue waters, Ain Dubai, Palm Jumeirah, Harbour, Sea, Skydive

C1301, C1401, C1501, C1601, C1701, C1801, C1901, C2001, C2101, C2201, C2301, C2401, C2501, C2601, C2701, C2801, C2901, C3001, C3101

DIMENSIONS (MM)

1 LIVING - 7400 X 4300	4 BEDROOM 1 - 3750 X 5350	6 BALCONY - 2000 X 4700
2 DINING - 3900 X 4450	4A BATHROOM 1 - 3200 X 2750	7 POWDER - 1400 X 2900
3 KITCHEN - 2600 X 4500	5 BEDROOM 2 - 4100 X 3650	8 UTILITY - 1650 X 1500
	5A BATHROOM 2 - 2800 X 2600	

Disclaimer: 1. All dimensions are in metric, measured to wall finishes. 2. All materials, dimensions & drawings are approximate. 3. Information is subject to change without notice, at developer's absolute discretion. 4. Actual area may vary from the stated area. 5. Drawing are not to scale. 6. All images used are for illustrative purpose only and do not represent the actual size, features, specifications, fittings and furnishings. 7. The developer reserves the right to make revisions/ alterations, at its absolute discretion, without any liability whatsoever.

2 BEDROOM APARTMENT

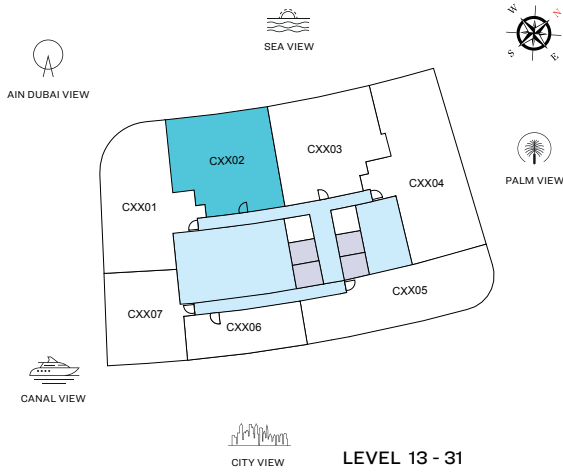
TYPE B (with powder room + balcony)

TOTAL SALEABLE AREA

SUITE = 1,287.47 SQ.FT

BALCONY = 396.00 SQ.FT

TOTAL = 1,683.47 SQ.FT



UNIT



List of unit numbers with this unit plan:

VIEWS

Palm Jumeirah, Harbour, Sea

C1302, C1402, C1502, C1602, C1702, C1802, C1902, C2002, C2102, C2202, C2302, C2402, C2502, C2602, C2702, C2802, C2902, C3002, C3102

DIMENSIONS (MM)

1 LIVING - 4200 X 4000	4 BEDROOM 1 - 3800 X 4450	6 BALCONY - 8250 X 3100
2 DINING - 4250 X 2800	4A BATHROOM 1 - 3000 X 2550	6A BALCONY 2 - 4650 X 2000
3 KITCHEN - 2850 X 2500	5 BEDROOM 2 - 3600 X 3700	7 POWDER - 1750 X 1950
	5A BATHROOM 2 - 2800 X 2600	8 UTILITY - 850 X 1450

Disclaimer: 1. All dimensions are in metric, measured to wall finishes. 2. All materials, dimensions & drawings are approximate. 3. Information is subject to change without notice, at developer's absolute discretion. 4. Actual area may vary from the stated area. 5. Drawing are not to scale. 6. All images used are for illustrative purpose only and do not represent the actual size, features, specifications, fittings and furnishings. 7. The developer reserves the right to make revisions/ alterations, at its absolute discretion, without any liability whatsoever.

2 BEDROOM APARTMENT

TYPE C (with powder room + balcony)

TOTAL SALEABLE AREA
 SUITE = 1,288.44 SQ.FT
 BALCONY = 398.59 SQ.FT
 TOTAL = 1,687.03 SQ.FT



■ UNIT



List of unit numbers with this unit plan:

VIEWS

Palm Jumeirah, Harbour, Sea

C1303, C1403, C1503, C1603, C1703, C1803, C1903, C2003, C2103, C2203, C2303, C2403, C2503, C2603, C2703, C2803, C2903, C3003, C3103

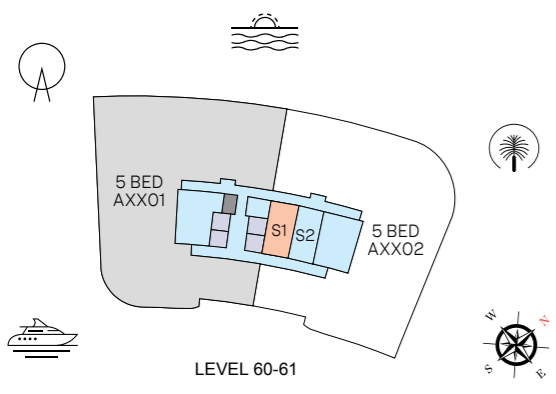
DIMENSIONS (MM)

1 LIVING - 4200 X 4000	4 BEDROOM 1 - 3850 X 4450	6 BALCONY - 8450 X 3100
2 DINING - 4300 X 2800	4A BATHROOM 1 - 3000 X 2550	6A BALCONY 2 - 4900 X 2000
3 KITCHEN - 2850 X 2500	5 BEDROOM 2 - 3600 X 3700	7 POWDER - 1800 X 1950
	5A BATHROOM 2 - 2900 X 2600	8 UTILITY - 850 X 1450

Disclaimer: 1. All dimensions are in metric, measured to wall finishes. 2. All materials, dimensions & drawings are approximate. 3. Information is subject to change without notice, at developer's absolute discretion. 4. Actual area may vary from the stated area. 5. Drawing are not to scale. 6. All images used are for illustrative purpose only and do not represent the actual size, features, specifications, fittings and furnishings. 7. The developer reserves the right to make revisions/ alterations, at its absolute discretion, without any liability whatsoever.

5 BEDROOM APARTMENT

TYPE A (with maid room + powder room + walk-in-wardrobe + balcony + store + office)



LEVEL 60-61



LEVEL 60-61

■ UNIT ■ STORE

VIEWS

180 degree views overlooking Blue waters, Ain Dubai, Palm Jumeirah, Harbour, JBR Beach, Marina, Sea, Skydive 6001, 6101

Disclaimer: 1. All dimensions are in metric, measured to wall finishes. 2. All materials, dimensions & drawings are approximate. 3. Information is subject to change without notice, at developer's absolute discretion. 4. Actual area may vary from the stated area. 5. Drawing are not to scale. 6. All images used are for illustrative purpose only and do not represent the actual size, features, specifications, fittings and furnishings. 7. The developer reserves the right to make revisions/ alterations, at its absolute discretion, without any liability whatsoever. 8. Loose furniture and finishes indicated are for representation purpose only.

5 BEDROOM APARTMENT

TYPE B (with maid room + powder room + walk-in-wardrobe + balcony + store + office)



LEVEL 60-61

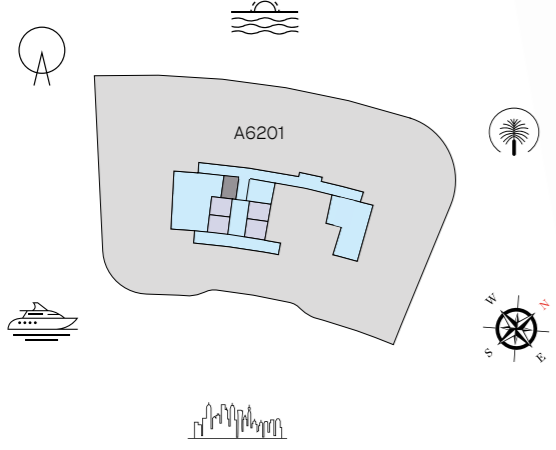
UNIT STORE

VIEWS

180 degree views overlooking Palm Jumeirah, Harbour, Sea, Marina Skyline
6002, 6102

6 BEDROOM

(with gym + home theatre + office + pool + sauna + powder room + wine room + maid room + store)



LEVEL 62

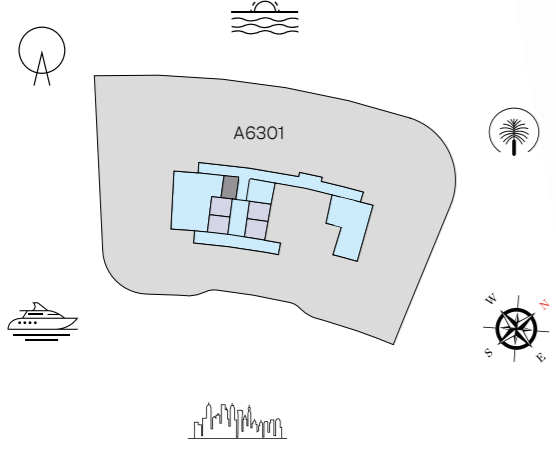
UNIT

VIEWS

360 Degree views
6201

6 BEDROOM

(with gym + home theatre + office + pool + sauna + powder room + wine room + maid room + store)



LEVEL 63

UNIT

VIEWS

360 Degree views

6301