



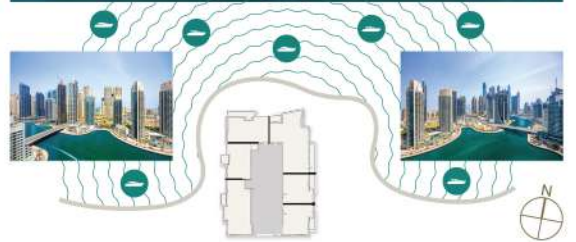
TYPICAL FLOORPLANS

Residential Levels

LIV
WATERSIDE
DUBAI MARINA

Levels 02 (1, 2 & 3 BEDROOM UNITS)

- 1 BR - A
- 1 BR - B
- 1 BR - C
- 1 BR - D
- 2 BR - A
- 3 BR - A





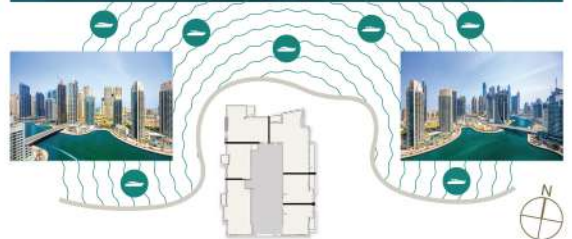
TYPICAL FLOORPLANS

Residential Levels

LIV
WATERSIDE
DUBAI MARINA

Levels 03 - 11 (1, 2 & 3 BEDROOM UNITS)

- 1 BR - A
- 1 BR - B
- 1 BR - D
- 2 BR - A
- 2 BR - B
- 3 BR - A





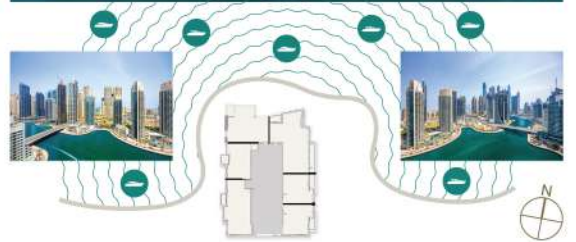
TYPICAL FLOORPLANS

Residential Levels



Levels 12 - 15 (1, 2 & 3 BEDROOM UNITS)

- 1 BR - A
- 1 BR - B
- 1 BR - D
- 2 BR - A
- 2 BR - C
- 3 BR - A





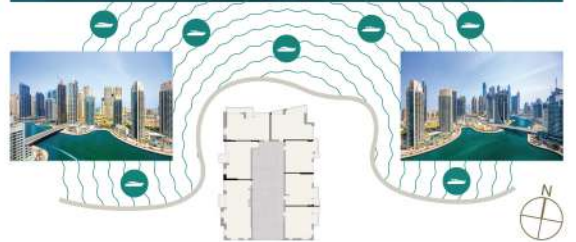
TYPICAL FLOORPLANS

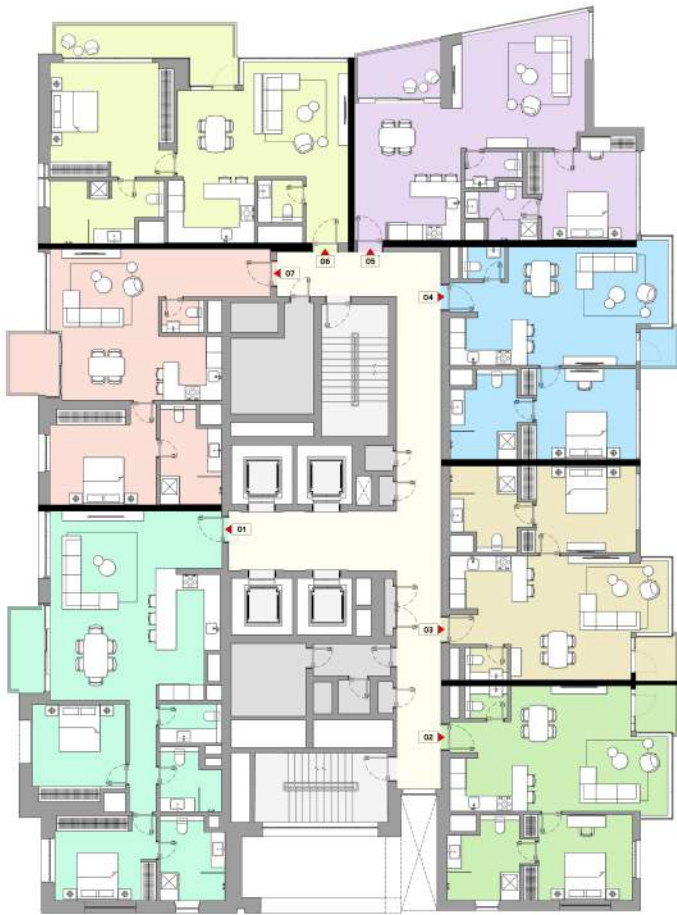
Residential Levels

LIV
WATERSIDE
DUBAI MARINA

Level 17 (1 & 2 BEDROOM UNITS)

- 1 BR - E
- 1 BR - F
- 1 BR - G
- 1 BR - H1
- 1 BR - I
- 1 BR - J
- 2 BR - D





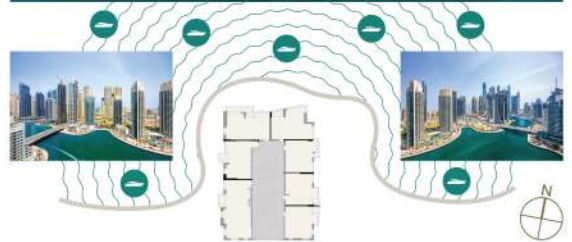
TYPICAL FLOORPLANS

Residential Levels

LIV
WATERSIDE
DUBAI MARINA

Level 18 - 24 (1 & 2 BEDROOM UNITS)

- 1 BR - E
- 1 BR - F
- 1 BR - G
- 1 BR - H2
- 1 BR - I
- 1 BR - J
- 2 BR - D





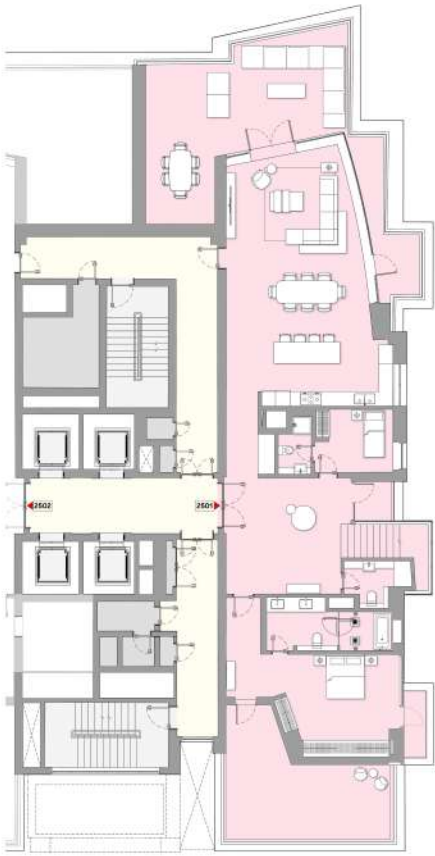
LIV
WATERSIDE
DUBAI MARINA

TYPICAL FLOORPLANS

Penthouse Levels 25 & 26

UNIT 2501

3 BEDROOM DUPLEX PENTHOUSES



LOWER FLOOR



UPPER FLOOR



LIV
WATERSIDE
DUBAI MARINA

TYPICAL FLOORPLANS

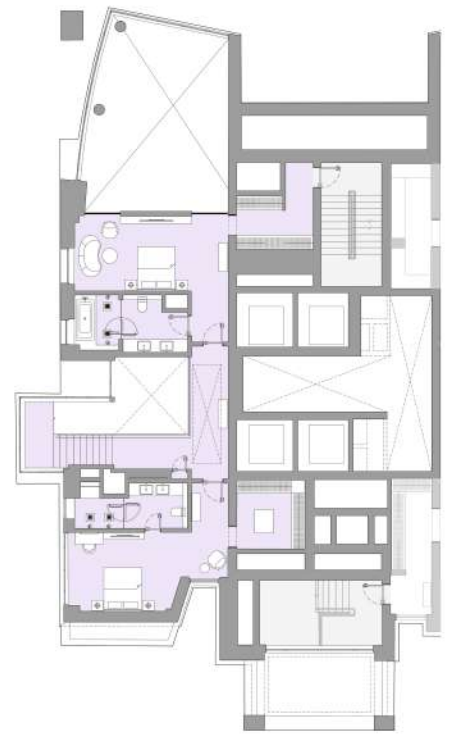
Penthouse Levels 25 & 26

UNIT 2502

3 BEDROOM DUPLEX PENTHOUSES



LOWER FLOOR



UPPER FLOOR

Level 02
Unit 201

2 BR-A Apartment



LIV
WATERSIDE
DUBAI MARINA

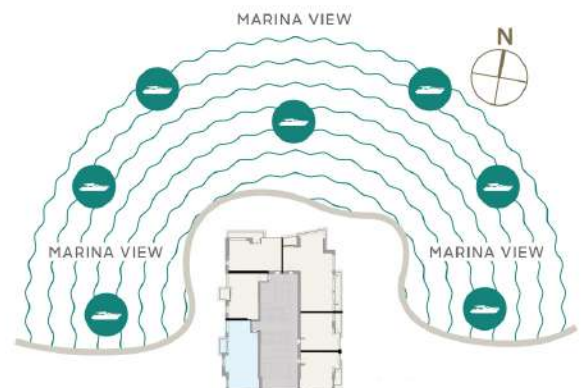


SAMPLE VIEWS



Apartment Area	110.14 sqm	1,186 sqft
Balcony Area	4.68 sqm	50 sqft
Total Area	114.82 sqm	1,236 sqft

Drawings are provided by our consultants. All dimensions, features and amenities are approximate at the time of printing. Actual area may vary from stated area. Drawings not to scale E & OE. The Developer reserves the right to make revisions to the floor plans and any features, materials and dimensions mentioned without further notice. Sample views are indicative and may differ or be subject to change.



Level 02
Unit 202

1 BR-A Apartment



LIV
WATERSIDE
DUBAI MARINA

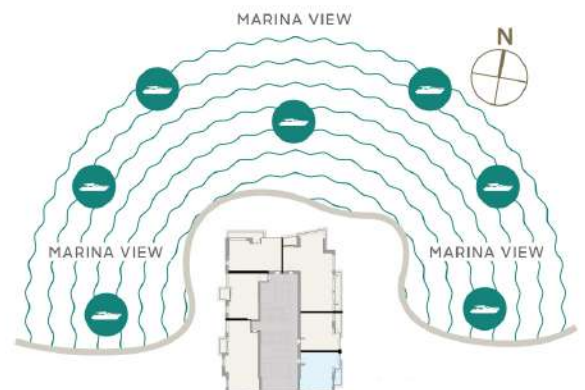


SAMPLE VIEWS



Apartment Area	68.54 sqm	738 sqft
Balcony Area	6.02 sqm	65 sqft
Total Area	74.56 sqm	803 sqft

Drawings are provided by our consultants. All dimensions, features and amenities are approximate at the time of printing. Actual area may vary from stated area. Drawings not to scale E & OE. The Developer reserves the right to make revisions to the floor plans and any features, materials and dimensions mentioned without further notice. Sample views are indicative and may differ or be subject to change.



Level 02
Unit 203

1 BR-B Apartment



LIV
WATERSIDE
DUBAI MARINA

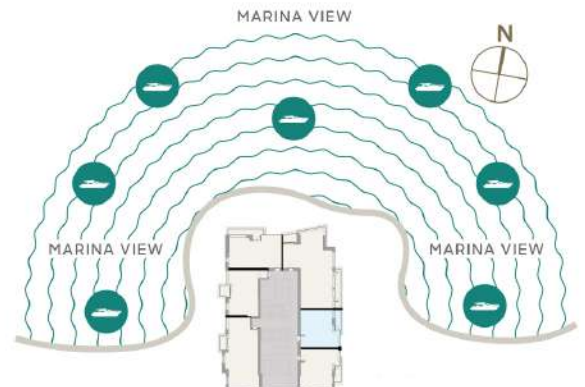


SAMPLE VIEWS



Apartment Area	68.19 sqm	734 sqft
Balcony Area	7.12 sqm	77 sqft
Total Area	75.31 sqm	811 sqft

Drawings are provided by our consultants. All dimensions, features and amenities are approximate at the time of printing. Actual area may vary from stated area. Drawings not to scale E & OE. The Developer reserves the right to make revisions to the floor plans and any features, materials and dimensions mentioned without further notice. Sample views are indicative and may differ or be subject to change.

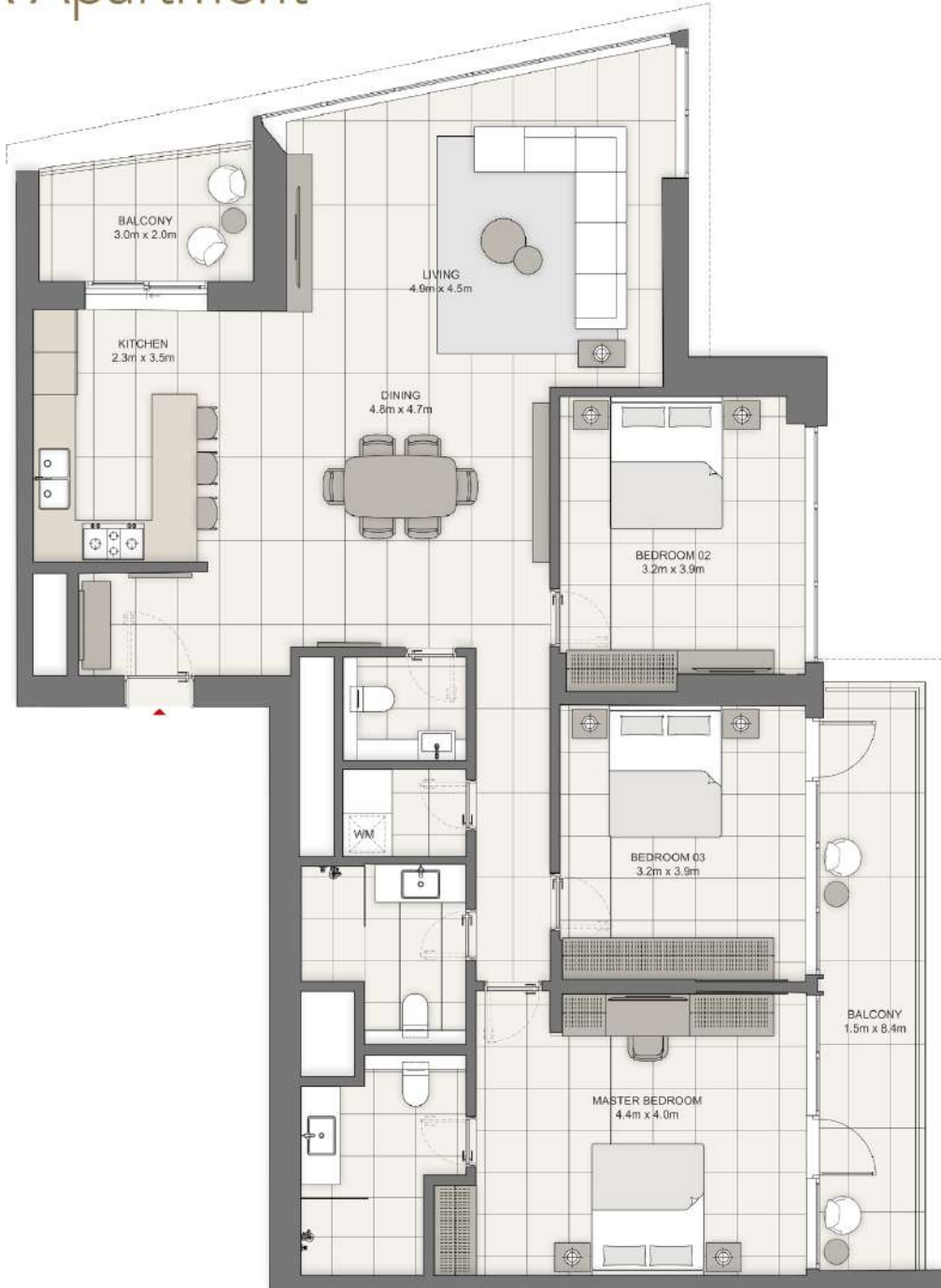


Level 02
Unit 204

3 BR-A Apartment



LIV
WATERSIDE
DUBAI MARINA

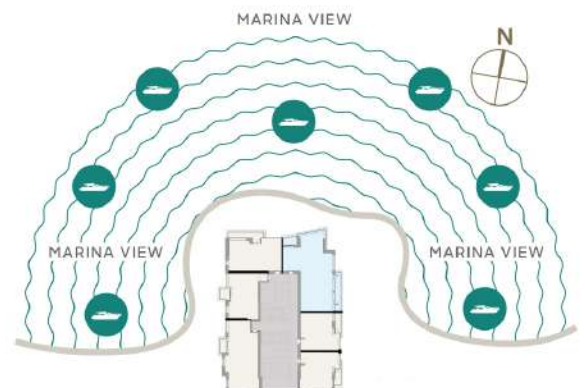


SAMPLE VIEWS



Apartment Area	139.9 sqm	1,506 sqft
Balcony Area	18.94 sqm	204 sqft
Total Area	158.84 sqm	1,710 sqft

Drawings are provided by our consultants. All dimensions, features and amenities are approximate at the time of printing. Actual area may vary from stated area. Drawings not to scale E & OE. The Developer reserves the right to make revisions to the floor plans and any features, materials and dimensions mentioned without further notice. Sample views are indicative and may differ or be subject to change.



Level 02
Unit 205

1 BR-C Apartment



LIV
WATERSIDE
DUBAI MARINA

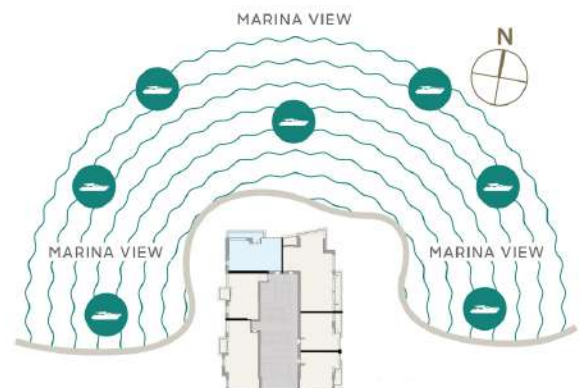


SAMPLE VIEWS



Apartment Area	81.97 sqm	882 sqft
Balcony Area	12.78 sqm	138 sqft
Total Area	94.75 sqm	1,020 sqft

Drawings are provided by our consultants. All dimensions, features and amenities are approximate at the time of printing. Actual area may vary from stated area. Drawings not to scale E & OE. The Developer reserves the right to make revisions to the floor plans and any features, materials and dimensions mentioned without further notice. Sample views are indicative and may differ or be subject to change.



Level 02
Unit 206

1 BR-D Apartment



LIV
WATERSIDE
DUBAI MARINA

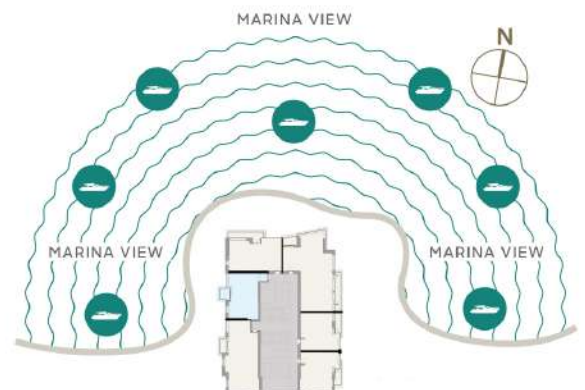


SAMPLE VIEWS



Apartment Area	71.48 sqm	769 sqft
Balcony Area	5.53 sqm	60 sqft
Total Area	77.01 sqm	829 sqft

Drawings are provided by our consultants. All dimensions, features and amenities are approximate at the time of printing. Actual area may vary from stated area. Drawings not to scale E & OE. The Developer reserves the right to make revisions to the floor plans and any features, materials and dimensions mentioned without further notice. Sample views are indicative and may differ or be subject to change.



Level 03-11
Unit 02

1 BR-A Apartment



LIV
WATERSIDE
DUBAI MARINA

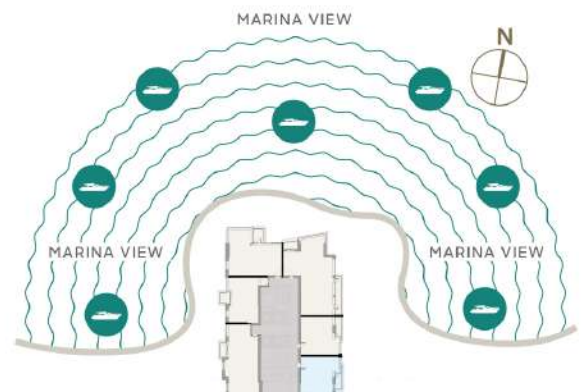


SAMPLE VIEWS



Apartment Area	68.76 sqm	740 sqft
Balcony Area	6.27 sqm	68 sqft
Total Area	75.03 sqm	808 sqft

Drawings are provided by our consultants. All dimensions, features and amenities are approximate at the time of printing. Actual area may vary from stated area. Drawings not to scale E & OE. The Developer reserves the right to make revisions to the floor plans and any features, materials and dimensions mentioned without further notice. Sample views are indicative and may differ or be subject to change.



Level 03-11
Unit 03

1 BR-B Apartment



LIV
WATERSIDE
DUBAI MARINA

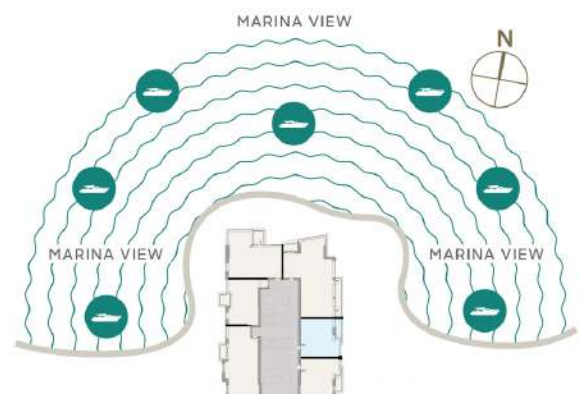


SAMPLE VIEWS



Apartment Area	68.16 sqm	734 sqft
Balcony Area	7.54 sqm	81 sqft
Total Area	75.70 sqm	815 sqft

Drawings are provided by our consultants. All dimensions, features and amenities are approximate at the time of printing. Actual area may vary from stated area. Drawings not to scale E & OE. The Developer reserves the right to make revisions to the floor plans and any features, materials and dimensions mentioned without further notice. Sample views are indicative and may differ or be subject to change.

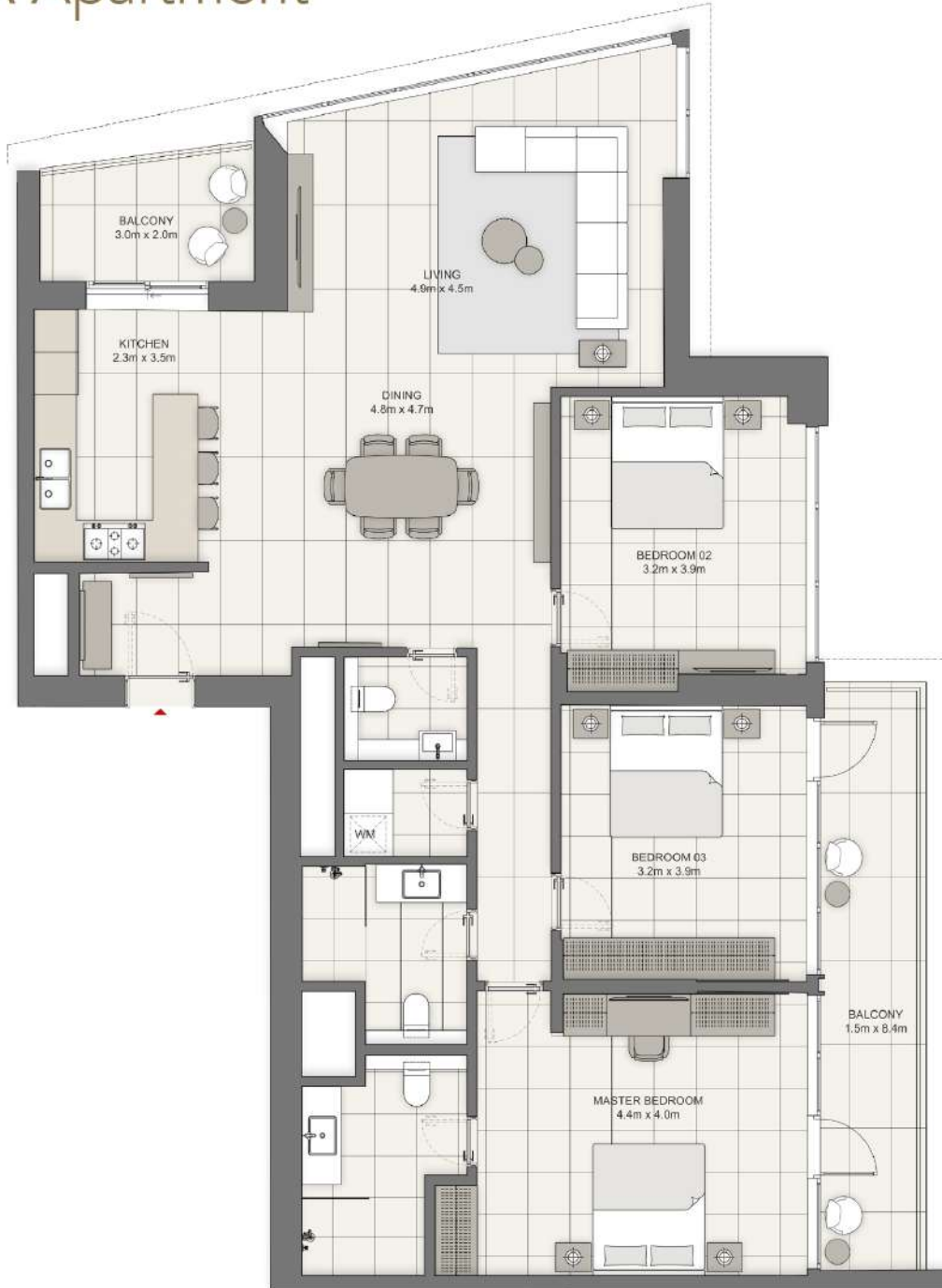


Level 03-11
Unit 04

3 BR-A Apartment



LIV
WATERSIDE
DUBAI MARINA

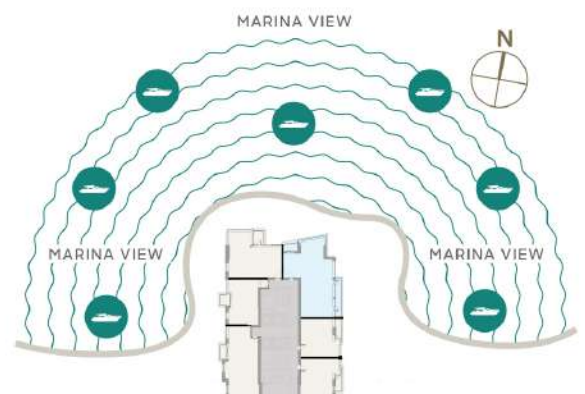


SAMPLE VIEWS



Apartment Area	139.43 sqm	1,501 sqft
Balcony Area	21.63 sqm	233 sqft
Total Area	161.06 sqm	1,734 sqft

Drawings are provided by our consultants. All dimensions, features and amenities are approximate at the time of printing. Actual area may vary from stated area. Drawings not to scale E & OE. The Developer reserves the right to make revisions to the floor plans and any features, materials and dimensions mentioned without further notice. Sample views are indicative and may differ or be subject to change.



Level 03-11
Unit 05

2 BR-B Apartment



LIV
WATERSIDE
DUBAI MARINA

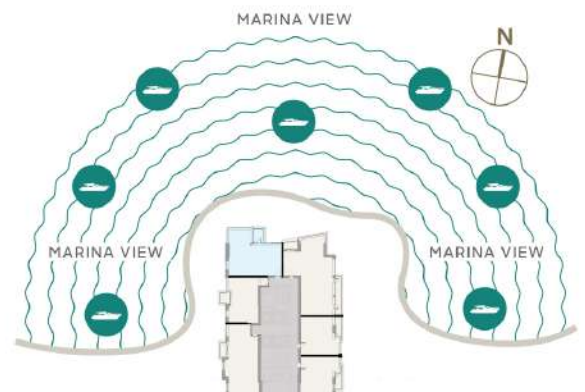


SAMPLE VIEWS



Apartment Area	102.88 sqm	1,107 sqft
Balcony Area	6.70 sqm	73 sqft
Total Area	109.58 sqm	1,180 sqft

Drawings are provided by our consultants. All dimensions, features and amenities are approximate at the time of printing. Actual area may vary from stated area. Drawings not to scale E & OE. The Developer reserves the right to make revisions to the floor plans and any features, materials and dimensions mentioned without further notice. Sample views are indicative and may differ or be subject to change.



Level 03-11
Unit 06

1 BR-D Apartment



LIV
WATERSIDE
DUBAI MARINA

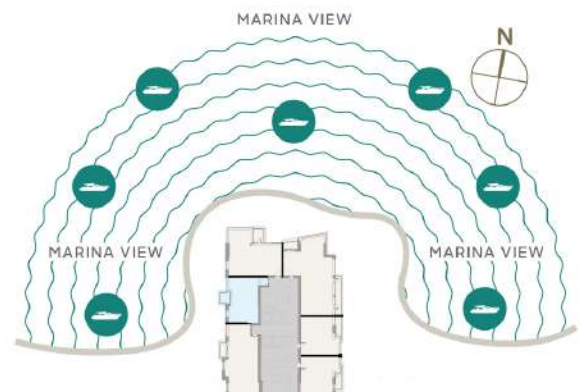


SAMPLE VIEWS



Apartment Area	71.68 sqm	772 sqft
Balcony Area	5.88 sqm	63 sqft
Total Area	77.56 sqm	835 sqft

Drawings are provided by our consultants. All dimensions, features and amenities are approximate at the time of printing. Actual area may vary from stated area. Drawings not to scale E & OE. The Developer reserves the right to make revisions to the floor plans and any features, materials and dimensions mentioned without further notice. Sample views are indicative and may differ or be subject to change.



Level 03-11
Unit 01

2 BR-A Apartment



LIV
WATERSIDE
DUBAI MARINA

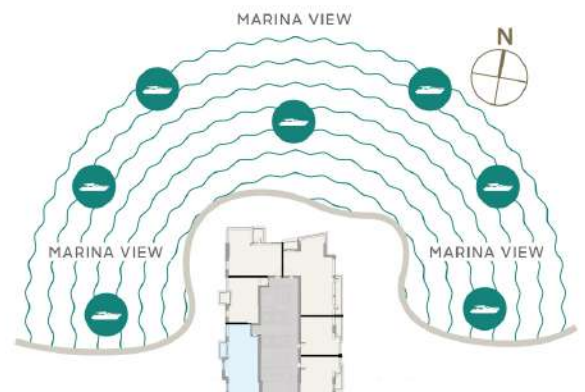


SAMPLE VIEWS



Apartment Area	110.27 sqm	1,187 sqft
Balcony Area	5.18 sqm	56 sqft
Total Area	115.45 sqm	1,243 sqft

Drawings are provided by our consultants. All dimensions, features and amenities are approximate at the time of printing. Actual area may vary from stated area. Drawings not to scale E & OE. The Developer reserves the right to make revisions to the floor plans and any features, materials and dimensions mentioned without further notice. Sample views are indicative and may differ or be subject to change.



Level 12-15
Unit 01

2 BR-A Apartment



LIV
WATERSIDE
DUBAI MARINA

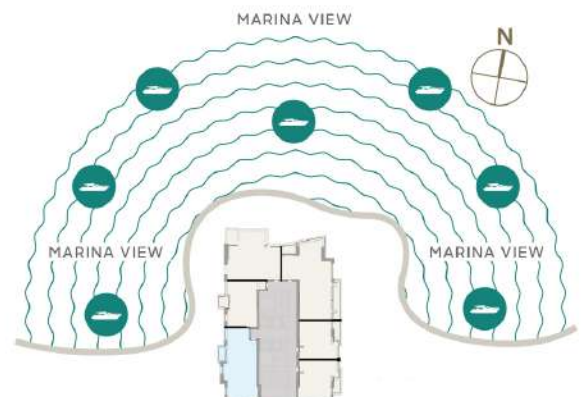


SAMPLE VIEWS



Apartment Area	110.08 sqm	1,185 sqft
Balcony Area	5.22 sqm	56 sqft
Total Area	115.3 sqm	1,241 sqft

Drawings are provided by our consultants. All dimensions, features and amenities are approximate at the time of printing. Actual area may vary from stated area. Drawings not to scale E & OE. The Developer reserves the right to make revisions to the floor plans and any features, materials and dimensions mentioned without further notice. Sample views are indicative and may differ or be subject to change.



Level 12-15
Unit 02

1 BR-A Apartment



LIV
WATERSIDE
DUBAI MARINA

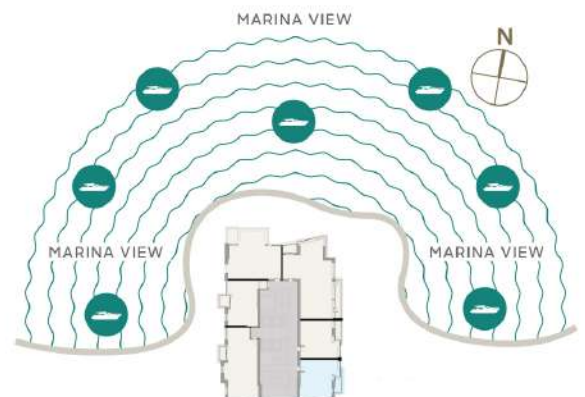


SAMPLE VIEWS



Apartment Area	68.45 sqm	737 sqft
Balcony Area	6.31 sqm	68 sqft
Total Area	74.76 sqm	805 sqft

Drawings are provided by our consultants. All dimensions, features and amenities are approximate at the time of printing. Actual area may vary from stated area. Drawings not to scale E & OE. The Developer reserves the right to make revisions to the floor plans and any features, materials and dimensions mentioned without further notice. Sample views are indicative and may differ or be subject to change.



Level 12-15
Unit 03

1 BR-B Apartment



LIV
WATERSIDE
DUBAI MARINA

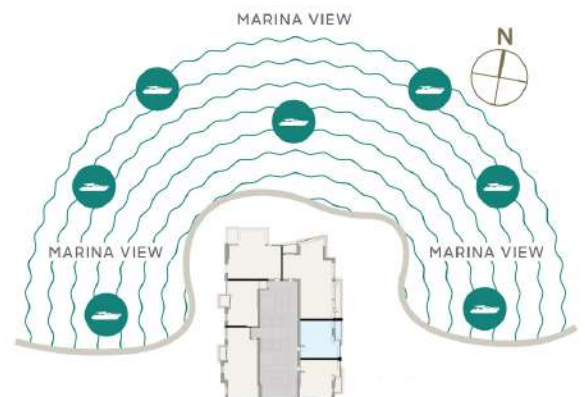


SAMPLE VIEWS



Apartment Area	68.13 sqm	733 sqft
Balcony Area	7.59 sqm	82 sqft
Total Area	75.72 sqm	815 sqft

Drawings are provided by our consultants. All dimensions, features and amenities are approximate at the time of printing. Actual area may vary from stated area. Drawings not to scale E & OE. The Developer reserves the right to make revisions to the floor plans and any features, materials and dimensions mentioned without further notice. Sample views are indicative and may differ or be subject to change.



Level 12-15
Unit 04

3 BR-A Apartment



LIV
WATERSIDE
DUBAI MARINA

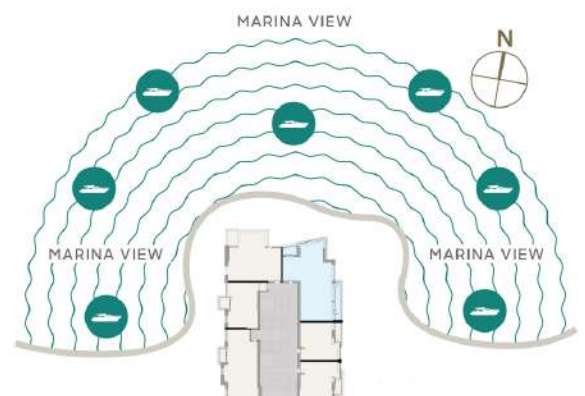


SAMPLE VIEWS



Apartment Area	139.43 sqm	1,501 sqft
Balcony Area	21.63 sqm	233 sqft
Total Area	161.06 sqm	1,734 sqft

Drawings are provided by our consultants. All dimensions, features and amenities are approximate at the time of printing. Actual area may vary from stated area. Drawings not to scale E & OE. The Developer reserves the right to make revisions to the floor plans and any features, materials and dimensions mentioned without further notice. Sample views are indicative and may differ or be subject to change.



Level 12-15
Unit 05

2 BR-C Apartment



LIV
WATERSIDE
DUBAI MARINA

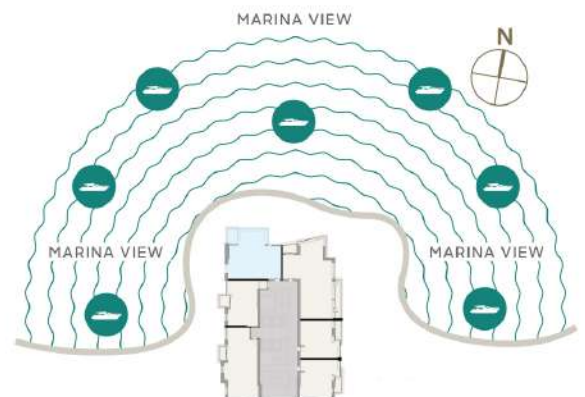


SAMPLE VIEWS



Apartment Area	103.62 sqm	1,115 sqft
Balcony Area	7.13 sqm	77 sqft
Total Area	110.75 sqm	1,192 sqft

Drawings are provided by our consultants. All dimensions, features and amenities are approximate at the time of printing. Actual area may vary from stated area. Drawings not to scale E & OE. The Developer reserves the right to make revisions to the floor plans and any features, materials and dimensions mentioned without further notice. Sample views are indicative and may differ or be subject to change.



Level 12-15
Unit 06

1 BR-D Apartment



LIV
WATERSIDE
DUBAI MARINA

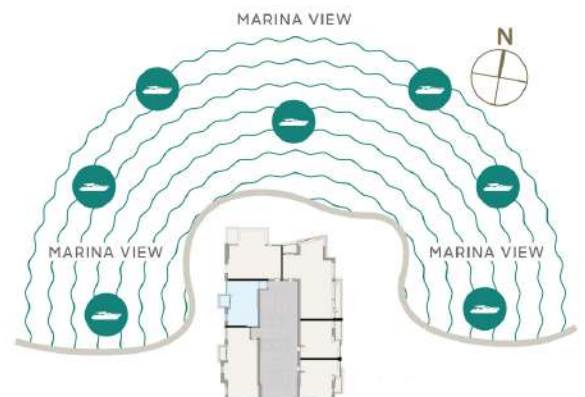


SAMPLE VIEWS



Apartment Area	71.69 sqm	772 sqft
Balcony Area	5.80 sqm	62 sqft
Total Area	77.49 sqm	834 sqft

Drawings are provided by our consultants. All dimensions, features and amenities are approximate at the time of printing. Actual area may vary from stated area. Drawings not to scale E & OE. The Developer reserves the right to make revisions to the floor plans and any features, materials and dimensions mentioned without further notice. Sample views are indicative and may differ or be subject to change.



Level 17
Unit 01

2 BR-D Apartment



LIV
WATERSIDE
DUBAI MARINA

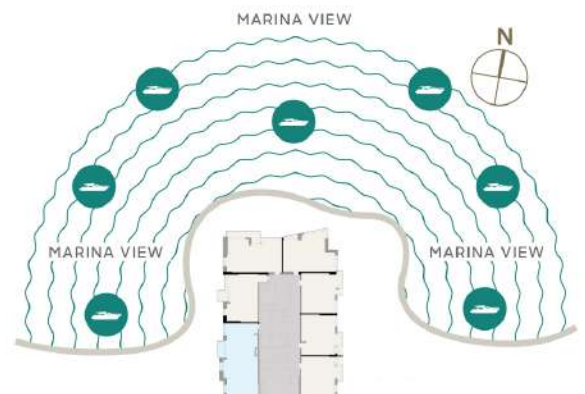


SAMPLE VIEWS



Apartment Area	109.5 sqm	1,179 sqft
Balcony Area	4.65 sqm	50 sqft
Total Area	114.15 sqm	1,229 sqft

Drawings are provided by our consultants. All dimensions, features and amenities are approximate at the time of printing. Actual area may vary from stated area. Drawings not to scale E & OE. The Developer reserves the right to make revisions to the floor plans and any features, materials and dimensions mentioned without further notice. Sample views are indicative and may differ or be subject to change.



Level 17
Unit 02

1 BR-E Apartment



LIV
WATERSIDE
DUBAI MARINA

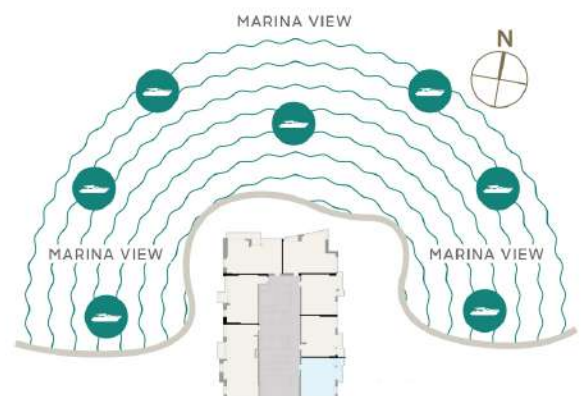


SAMPLE VIEWS



Apartment Area	68.08 sqm	733 sqft
Balcony Area	3.11 sqm	33 sqft
Total Area	71.19 sqm	766 sqft

Drawings are provided by our consultants. All dimensions, features and amenities are approximate at the time of printing. Actual area may vary from stated area. Drawings not to scale E & OE. The Developer reserves the right to make revisions to the floor plans and any features, materials and dimensions mentioned without further notice. Sample views are indicative and may differ or be subject to change.



Level 17
Unit 03

1 BR-F Apartment



LIV
WATERLINE

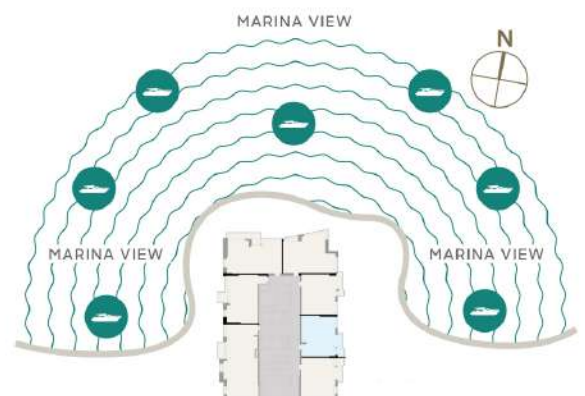


SAMPLE VIEWS



Apartment Area	67.06 sqm	722 sqft
Balcony Area	3.05 sqm	33 sqft
Total Area	70.11 sqm	755 sqft

Drawings are provided by our consultants. All dimensions, features and amenities are approximate at the time of printing. Actual area may vary from stated area. Drawings not to scale E & OE. The Developer reserves the right to make revisions to the floor plans and any features, materials and dimensions mentioned without further notice. Sample views are indicative and may differ or be subject to change.



Level 17
Unit 04

1 BR-G Apartment



LIV
WATERSIDE
DUBAI MARINA

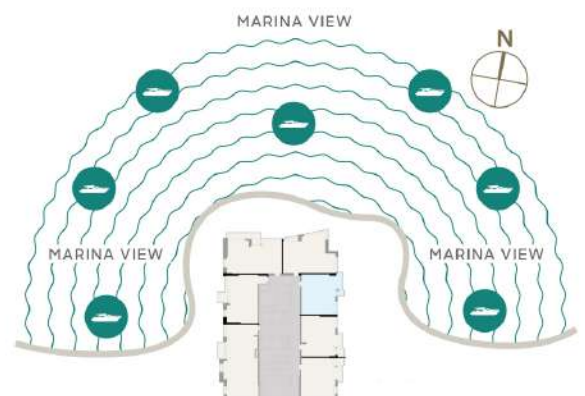


SAMPLE VIEWS



Apartment Area	68.42 sqm	736 sqft
Balcony Area	1.95 sqm	21 sqft
Total Area	70.37 sqm	757 sqft

Drawings are provided by our consultants. All dimensions, features and amenities are approximate at the time of printing. Actual area may vary from stated area. Drawings not to scale E & OE. The Developer reserves the right to make revisions to the floor plans and any features, materials and dimensions mentioned without further notice. Sample views are indicative and may differ or be subject to change.



Level 17
Unit 05

1 BR-H1 Apartment



LIV
WATERSIDE
DUBAI MARINA

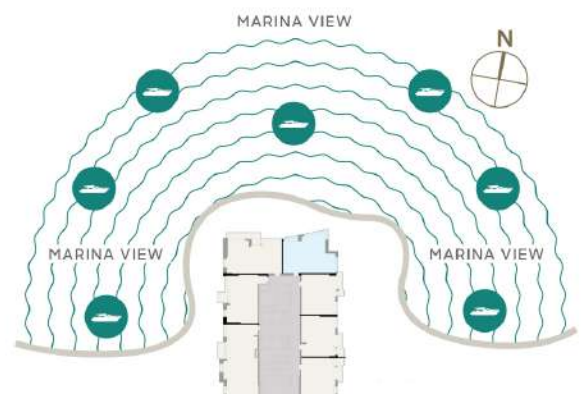


SAMPLE VIEWS



Apartment Area	82.36 sqm	887 sqft
Balcony Area	2.92 sqm	31 sqft
Total Area	85.28 sqm	918 sqft

Drawings are provided by our consultants. All dimensions, features and amenities are approximate at the time of printing. Actual area may vary from stated area. Drawings not to scale E & OE. The Developer reserves the right to make revisions to the floor plans and any features, materials and dimensions mentioned without further notice. Sample views are indicative and may differ or be subject to change.

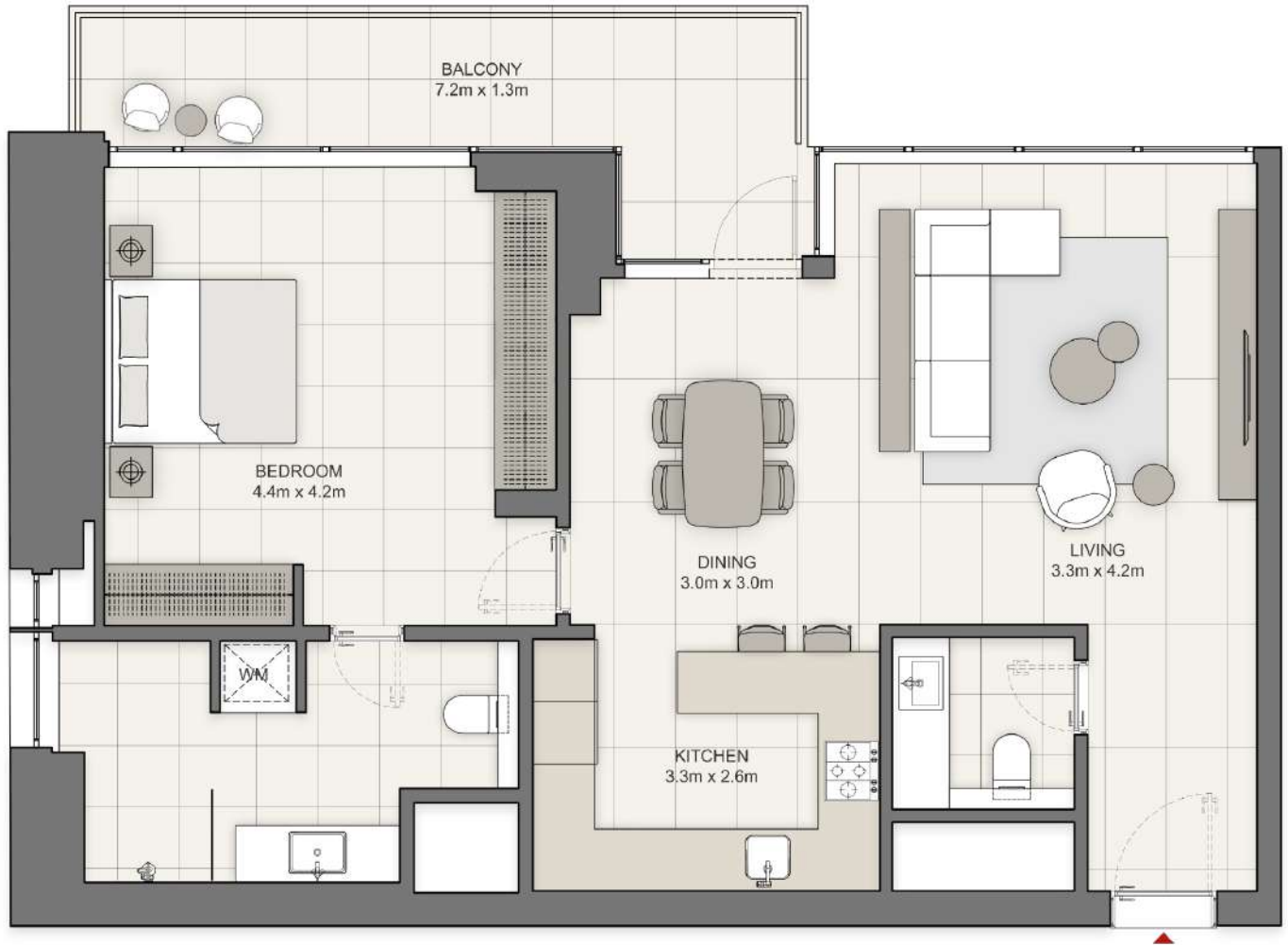


Level 17
Unit 06

1 BR-I Apartment



LIV
WATERSIDE
DUBAI MARINA

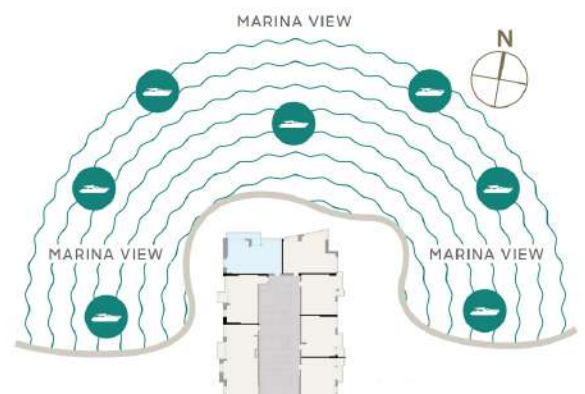


SAMPLE VIEWS



Apartment Area	82.29 sqm	886 sqft
Balcony Area	12.03 sqm	129 sqft
Total Area	94.32 sqm	1,015 sqft

Drawings are provided by our consultants. All dimensions, features and amenities are approximate at the time of printing. Actual area may vary from stated area. Drawings not to scale E & OE. The Developer reserves the right to make revisions to the floor plans and any features, materials and dimensions mentioned without further notice. Sample views are indicative and may differ or be subject to change.



Level 17
Unit 07

1 BR-J Apartment



LIV
WATERSIDE
DUBAI MARINA

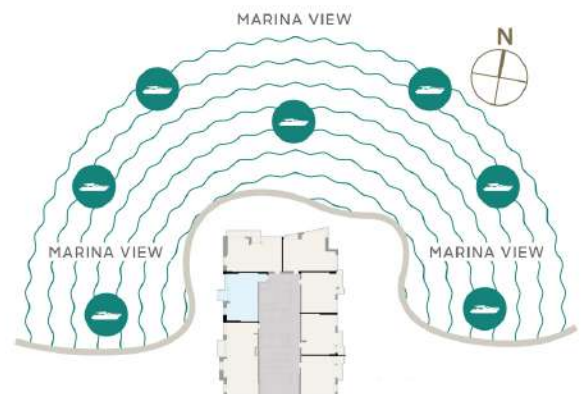


SAMPLE VIEWS



Apartment Area	72.03 sqm	775 sqft
Balcony Area	4.64 sqm	50 sqft
Total Area	76.67 sqm	825 sqft

Drawings are provided by our consultants. All dimensions, features and amenities are approximate at the time of printing. Actual area may vary from stated area. Drawings not to scale E & OE. The Developer reserves the right to make revisions to the floor plans and any features, materials and dimensions mentioned without further notice. Sample views are indicative and may differ or be subject to change.



Level 18-24
Unit 01

2 BR-D Apartment



LIV
WATERSIDE
DUBAI MARINA

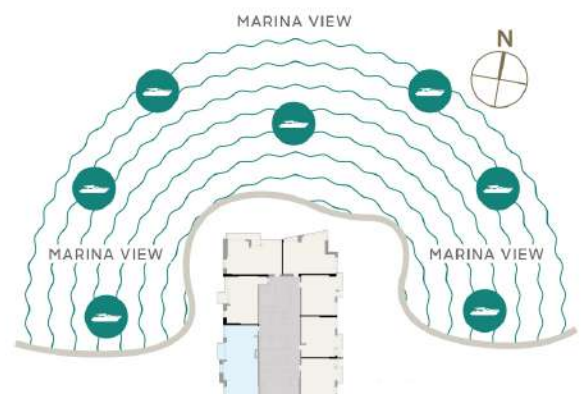


SAMPLE VIEWS



Apartment Area	109.52 sqm	1,179 sqft
Balcony Area	5.34 sqm	57 sqft
Total Area	114.86 sqm	1,236 sqft

Drawings are provided by our consultants. All dimensions, features and amenities are approximate at the time of printing. Actual area may vary from stated area. Drawings not to scale E & OE. The Developer reserves the right to make revisions to the floor plans and any features, materials and dimensions mentioned without further notice. Sample views are indicative and may differ or be subject to change.



Level 18-24
Unit 02

1 BR-E Apartment



LIV
WATERSIDE
DUBAI MARINA

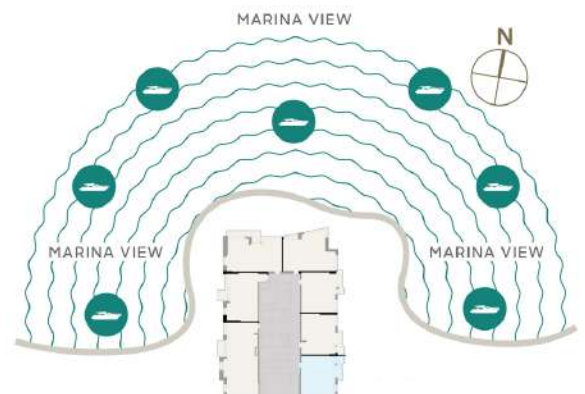


SAMPLE VIEWS



Apartment Area	68.06 sqm	733 sqft
Balcony Area	3.30 sqm	35 sqft
Total Area	71.36 sqm	768 sqft

Drawings are provided by our consultants. All dimensions, features and amenities are approximate at the time of printing. Actual area may vary from stated area. Drawings not to scale E & OE. The Developer reserves the right to make revisions to the floor plans and any features, materials and dimensions mentioned without further notice. Sample views are indicative and may differ or be subject to change.



Level 18-24
Unit 03

1 BR-F Apartment



LIV
WATERLINE

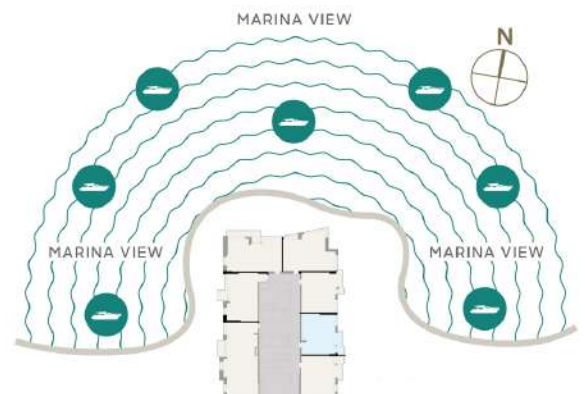


SAMPLE VIEWS



Apartment Area	67.06 sqm	722 sqft
Balcony Area	3.23 sqm	35 sqft
Total Area	70.29 sqm	757 sqft

Drawings are provided by our consultants. All dimensions, features and amenities are approximate at the time of printing. Actual area may vary from stated area. Drawings not to scale E & OE. The Developer reserves the right to make revisions to the floor plans and any features, materials and dimensions mentioned without further notice. Sample views are indicative and may differ or be subject to change.



Level 18-24
Unit 04

1BR-G Apartment



LIV
WATERSIDE
DUBAI MARINA

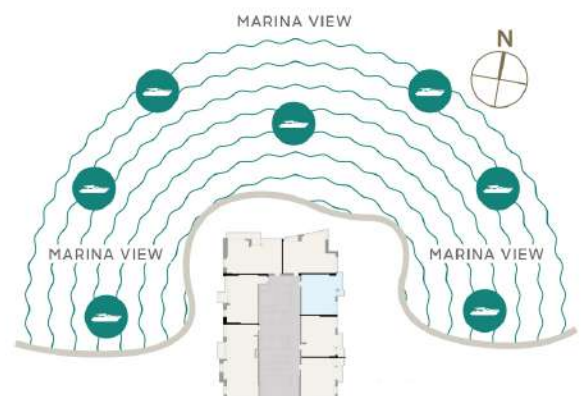


SAMPLE VIEWS



Apartment Area	68.44 sqm	737 sqft
Balcony Area	2.03 sqm	22 sqft
Total Area	70.47 sqm	759 sqft

Drawings are provided by our consultants. All dimensions, features and amenities are approximate at the time of printing. Actual area may vary from stated area. Drawings not to scale E & OE. The Developer reserves the right to make revisions to the floor plans and any features, materials and dimensions mentioned without further notice. Sample views are indicative and may differ or be subject to change.



Level 18-24
Unit 05

1 BR-H2 Apartment



LIV
WATERSIDE
DUBAI MARINA

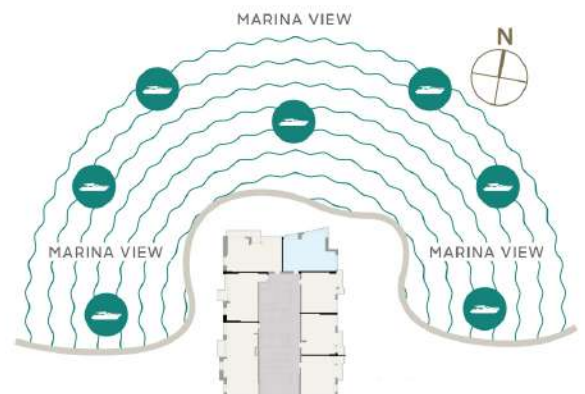


SAMPLE VIEWS



Apartment Area	78.10 sqm	841 sqft
Balcony Area	7.08 sqm	76 sqft
Total Area	85.18 sqm	917 sqft

Drawings are provided by our consultants. All dimensions, features and amenities are approximate at the time of printing. Actual area may vary from stated area. Drawings not to scale E & OE. The Developer reserves the right to make revisions to the floor plans and any features, materials and dimensions mentioned without further notice. Sample views are indicative and may differ or be subject to change.

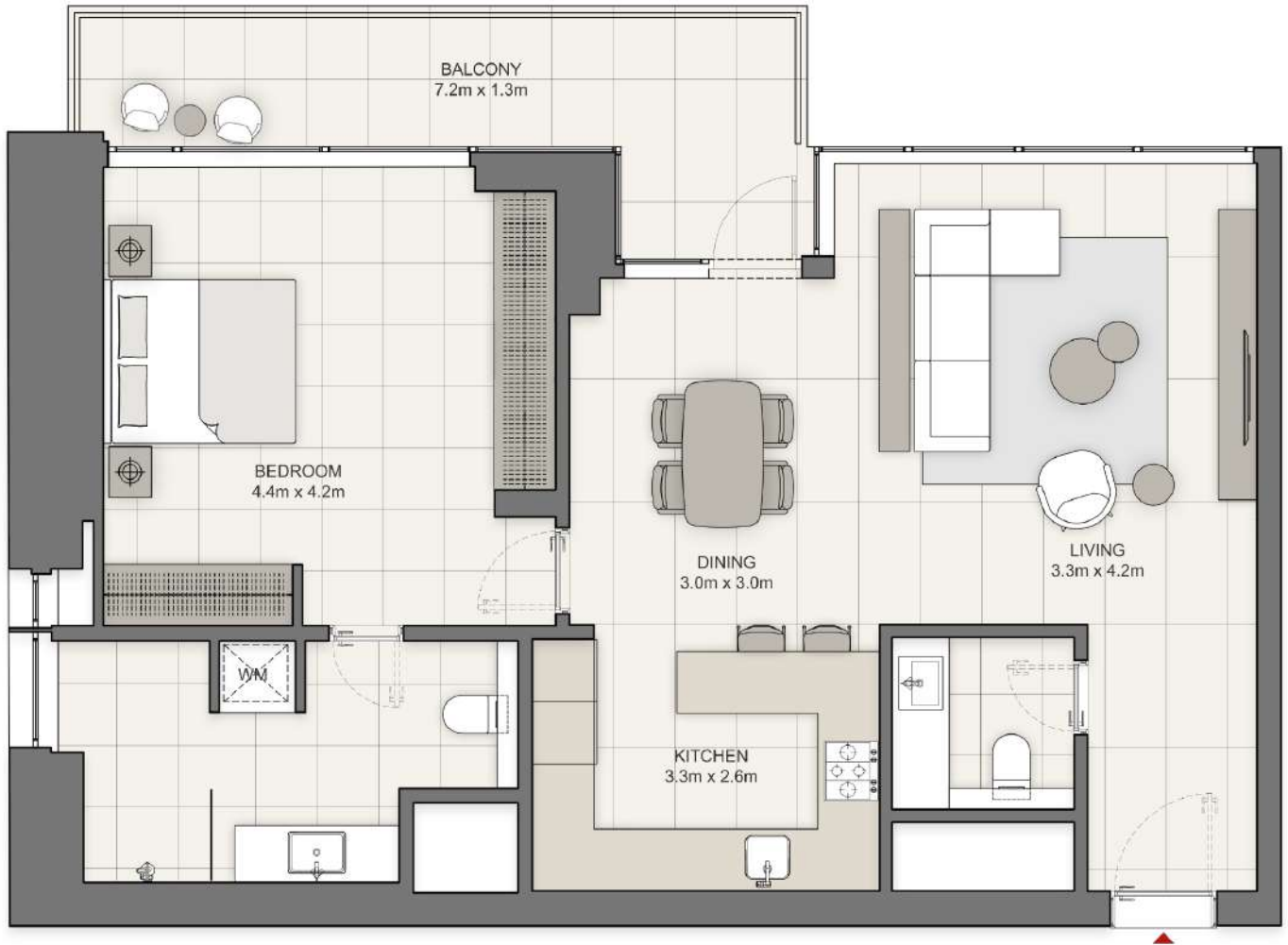


Level 18-24
Unit 06

1 BR-I Apartment



LIV
WATERSIDE
DUBAI MARINA

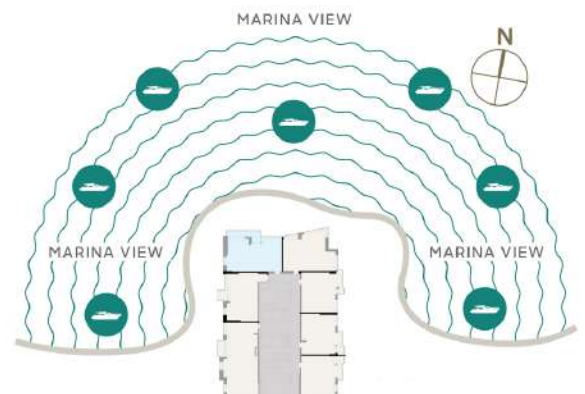


SAMPLE VIEWS



Apartment Area	82.29 sqm	886 sqft
Balcony Area	13.27 sqm	143 sqft
Total Area	95.56 sqm	1,029 sqft

Drawings are provided by our consultants. All dimensions, features and amenities are approximate at the time of printing. Actual area may vary from stated area. Drawings not to scale E & OE. The Developer reserves the right to make revisions to the floor plans and any features, materials and dimensions mentioned without further notice. Sample views are indicative and may differ or be subject to change.



Level 18-24
Unit 07

1 BR-J Apartment



LIV
WATERSIDE
DUBAI MARINA

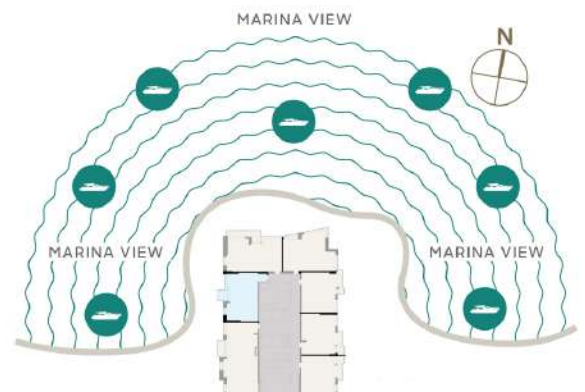


SAMPLE VIEWS



Apartment Area	72 sqm	775 sqft
Balcony Area	4.95 sqm	53 sqft
Total Area	76.95 sqm	828 sqft

Drawings are provided by our consultants. All dimensions, features and amenities are approximate at the time of printing. Actual area may vary from stated area. Drawings not to scale E & OE. The Developer reserves the right to make revisions to the floor plans and any features, materials and dimensions mentioned without further notice. Sample views are indicative and may differ or be subject to change.





LIV
WATERSIDE
DUBAI MARINA

Level 25-26
Unit 01

3 BR Duplex
Penthouse



LOWER FLOOR



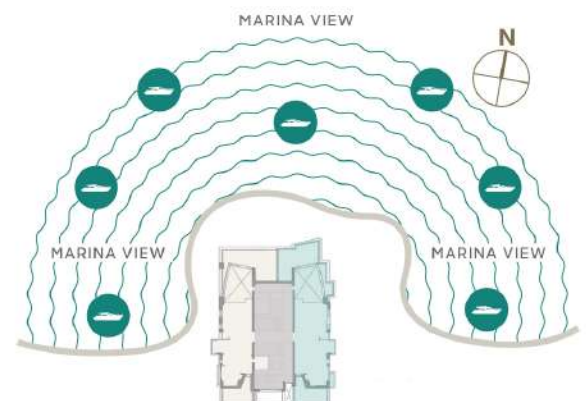
UPPER FLOOR

SAMPLE VIEWS



Apartment Area	315.26 sqm	3,393 sqft
Balcony Area	98.04 sqm	1,056 sqft
Total Area	413.3 sqm	4,449 sqft

Drawings are provided by our consultants. All dimensions, features and amenities are approximate at the time of printing. Actual area may vary from stated area. Drawings not to scale E & OE. The Developer reserves the right to make revisions to the floor plans and any features, materials and dimensions mentioned without further notice. Sample views are indicative and may differ or be subject to change.

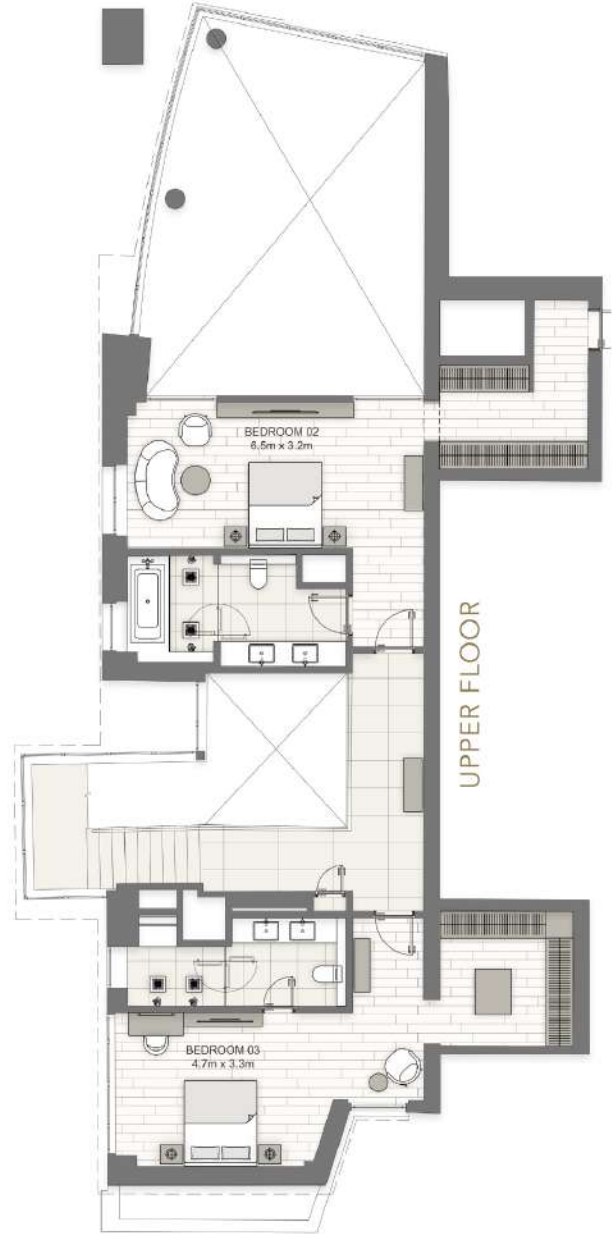
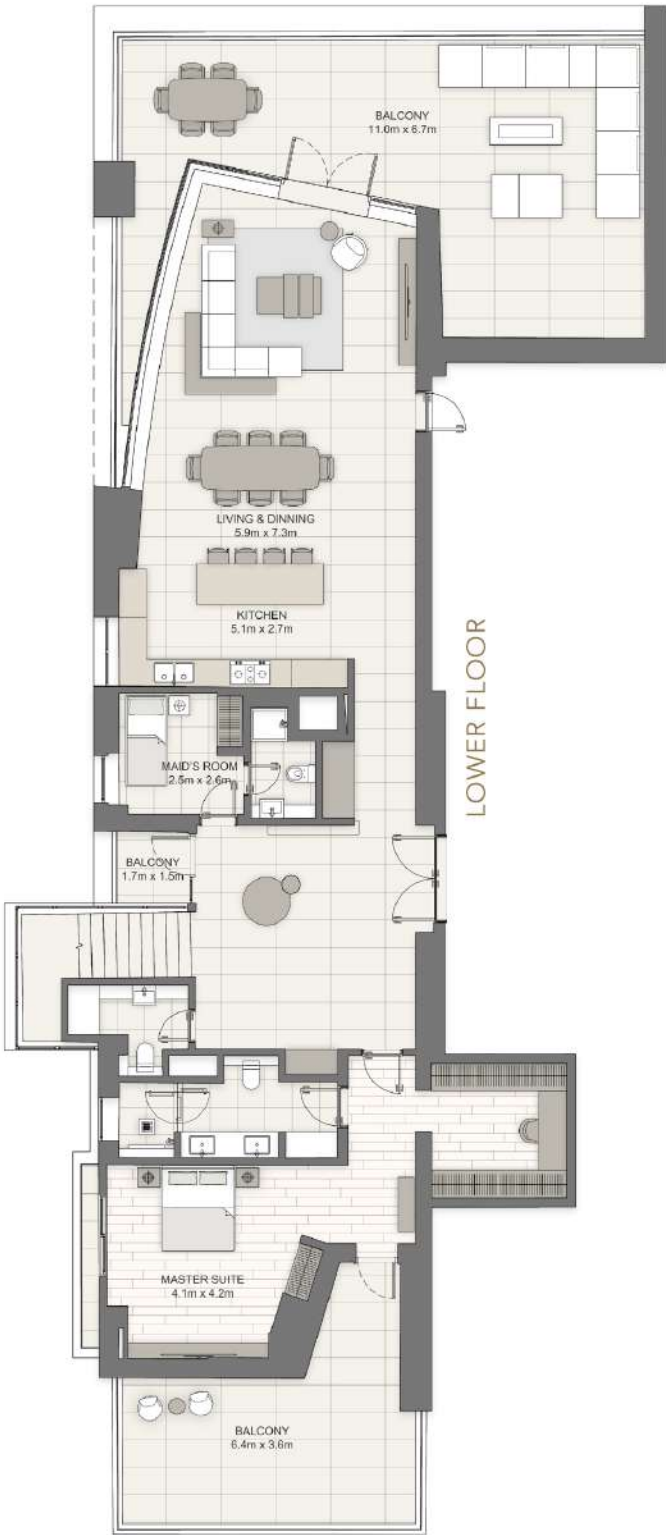




LIV
WATERSIDE
DUBAI MARINA

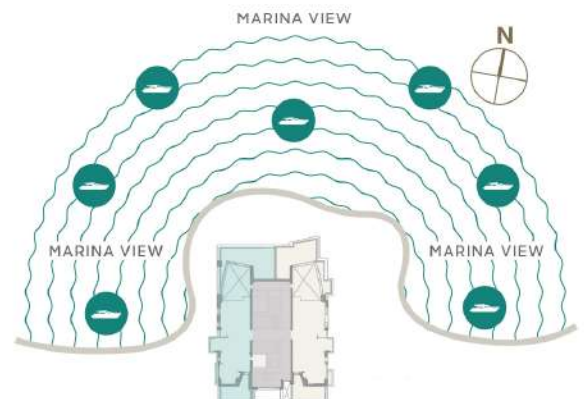
Level 25-26
Unit 02

3 BR Duplex
Penthouse



Apartment Area	311.06 sqm	3,348 sqft
Balcony Area	95.77 sqm	1,031 sqft
Total Area	406.83 sqm	4,379 sqft

Drawings are provided by our consultants. All dimensions, features and amenities are approximate at the time of printing. Actual area may vary from stated area. Drawings not to scale E & OE. The Developer reserves the right to make revisions to the floor plans and any features, materials and dimensions mentioned without further notice. Sample views are indicative and may differ or be subject to change.





LIV
WATERSIDE

UNIT G-08

4 Bedroom

PANORAMIC MARINA VIEW

3 Parking Space



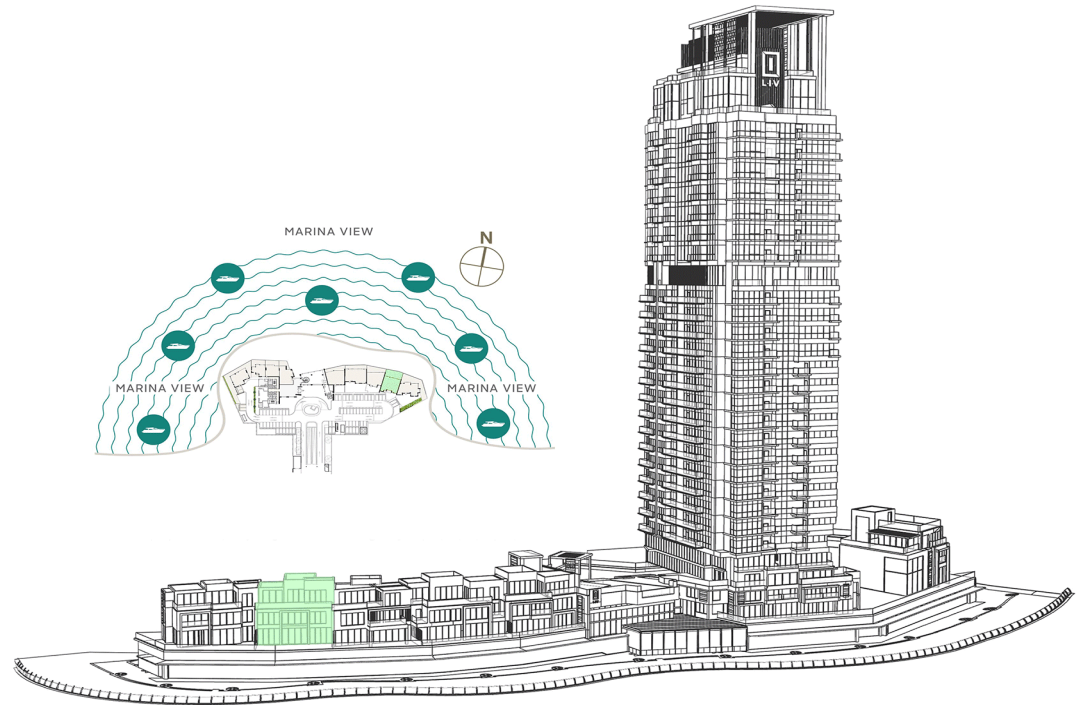
Apartment Area	409.61 sqm	4409.00 sqft
Balcony Area	155.31 sqm	1671.74 sqft
Total Area	564.92 sqm	6080.74 sqft

Sample view from the apartment



Floorplan:

1. All dimensions are in imperial and metric, and measured from finish to finish excluding construction tolerances
2. All materials, dimensions, and drawings are approximate only
3. Information is subject to change without notice, at developer's absolute discretion
4. Actual area may vary from the stated area
5. Drawings not to scale
6. All images used are for illustrative purposes only and do not represent the actual size, features, specifications, fittings, and furnishing
7. The developer reserves the right to make revisions / alterations, at it's absolute discretion, without any liability whatsoever



- DRAFT -

GROUND FLOOR LEVEL



FIRST FLOOR LEVEL



SECOND FLOOR LEVEL



LIV
WATERSIDE

UNIT G-05

4 Bedroom

PANORAMIC MARINA VIEW

3 Parking Space



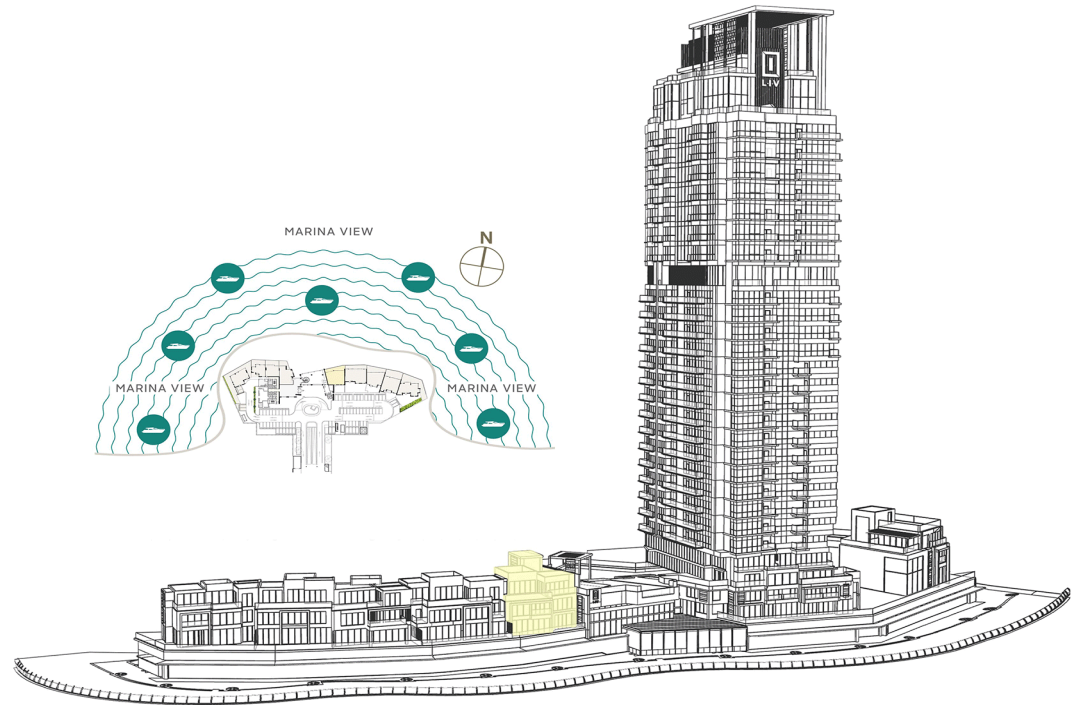
Apartment Area	440.16 sqm	4737.84 sqft
Balcony Area	120.06 sqm	1292.31 sqft
Total Area	560.22 sqm	6030.15 sqft

Sample view from the apartment



Floorplan:

1. All dimensions are in imperial and metric, and measured from finish to finish excluding construction tolerances
2. All materials, dimensions, and drawings are approximate only
3. Information is subject to change without notice, at developer's absolute discretion
4. Actual area may vary from the stated area
5. Drawings not to scale
6. All images used are for illustrative purposes only and do not represent the actual size, features, specifications, fittings, and furnishing
7. The developer reserves the right to make revisions / alterations, at it's absolute discretion, without any liability whatsoever



- DRAFT -

GROUND LEVEL



FIRST FLOOR LEVEL



SECOND FLOOR LEVEL

