

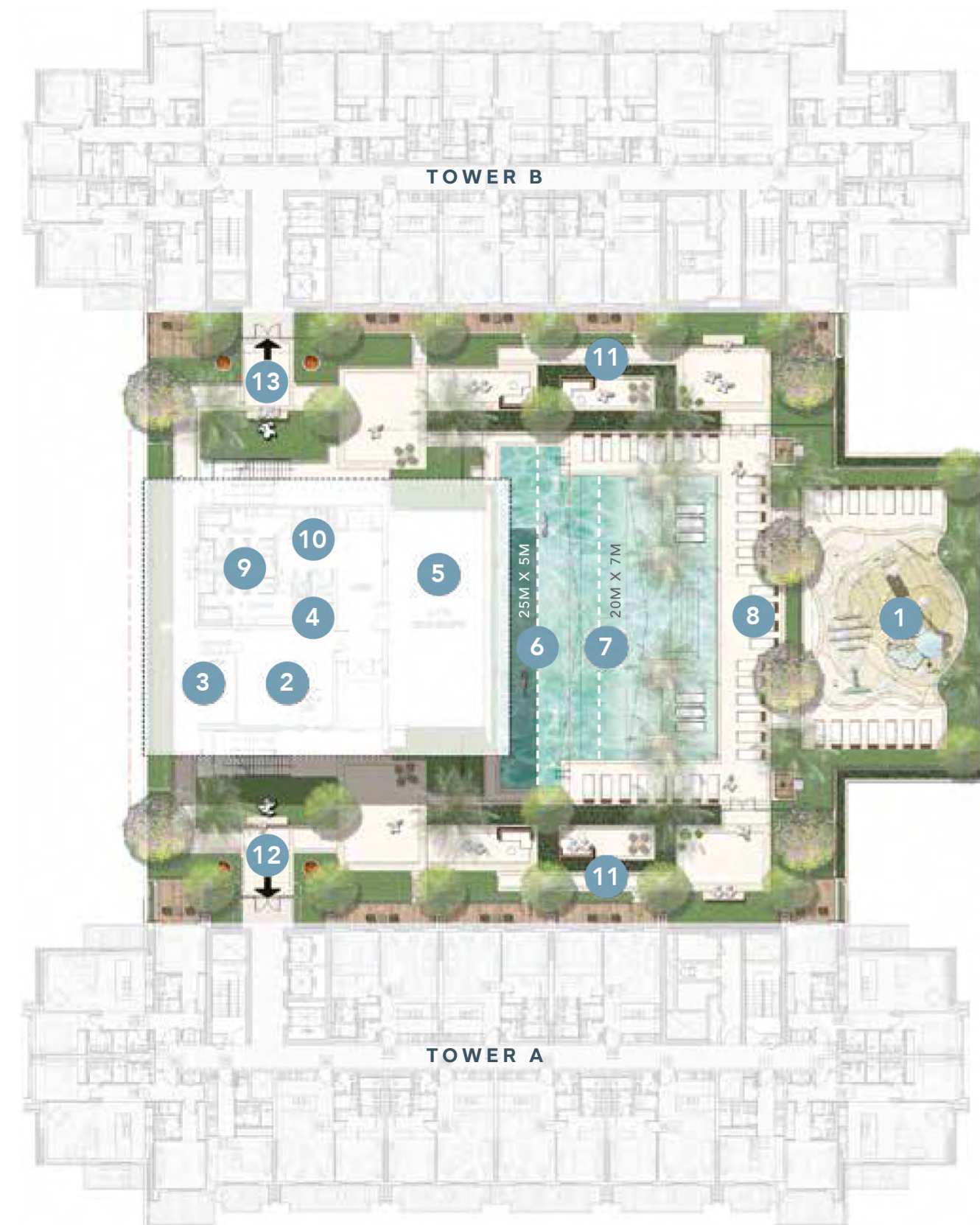
# GROUND FLOOR AMENITIES PLAN

- 1 Drop-Off & Pick-Up Area
- 2 Lobby Reception
- 3 Lobby Seating & Working Space
- 4 Guest Parking
- 5 Residents Parking Entrance
- 6 Lifts
- 7 Service Lifts
- 8 Move-In Truck Parking
- 9 Retail Outlets
- 10 Access To Leisure Outdoor Park



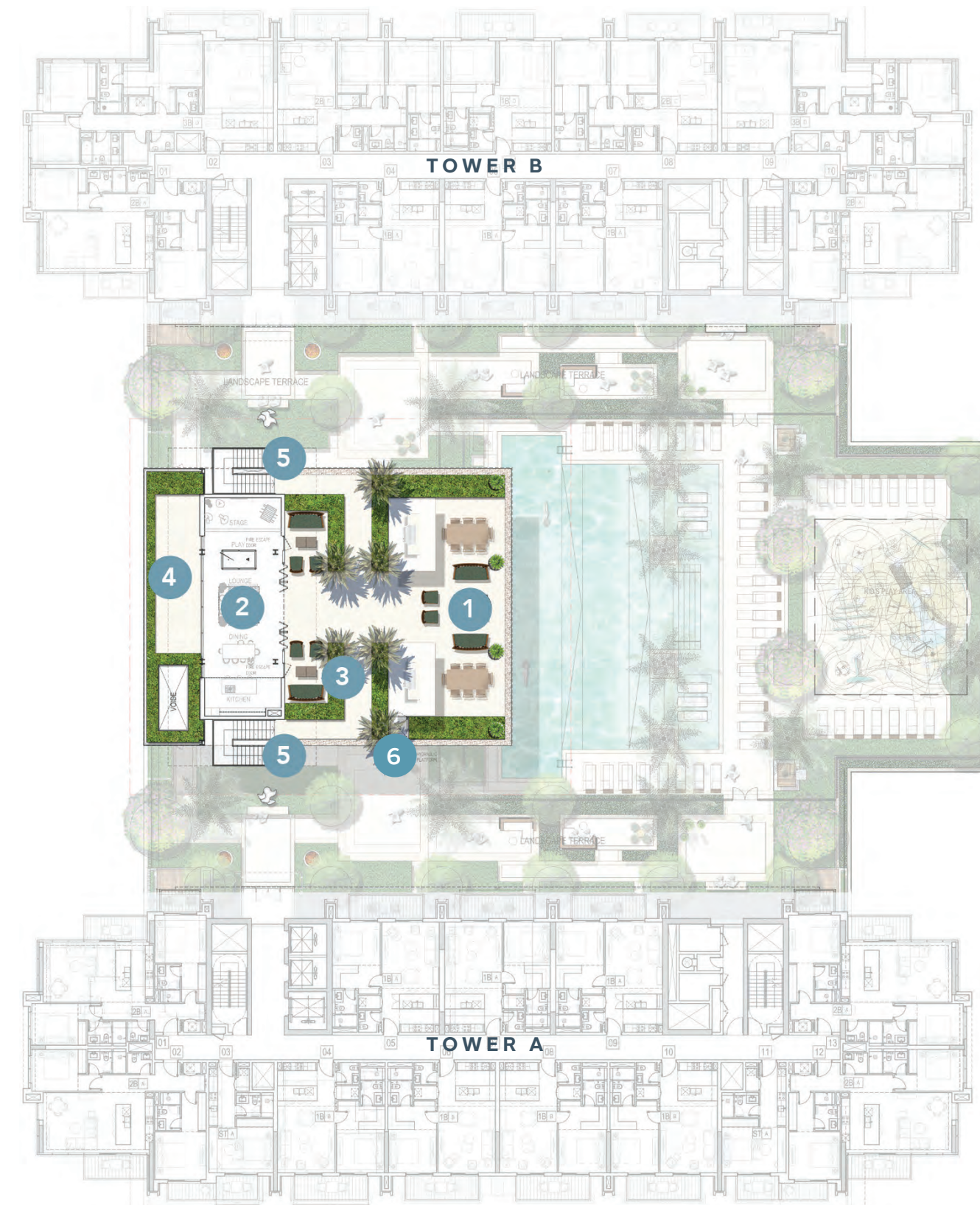
# PAVILION LOWER DECK AMENITIES PLAN

- 1 Kids Splash Pad
- 2 Indoor Kids Play Area
- 3 Outdoor Kids Play Area
- 4 Kids Dedicated Bathroom
- 5 Panoramic Fitness Center
- 6 Semi-Olympic Lap Pool (25m X 5m)
- 7 Leisure Lounge Pool (20m X 7m)
- 8 Pool Sun-Loungers Area
- 9 Changing Room, Steam Shower & Sauna
- 10 Bathroom For People Of Determination
- 11 Seating Areas
- 12 Entrance To Tower A
- 13 Entrance To Tower B



# PAVILION UPPER DECK AMENITIES PLAN

- 1 Outdoor Seating Area With Barbeque Spaces
- 2 Indoor Lounge With Seating & Gaming Spaces
- 3 Seating Areas/Pathway
- 4 Viewing Deck
- 5 Access To The Club Terrace
- 6 External Lift





**DISCOVER A NEW WAVE OF LIVING**

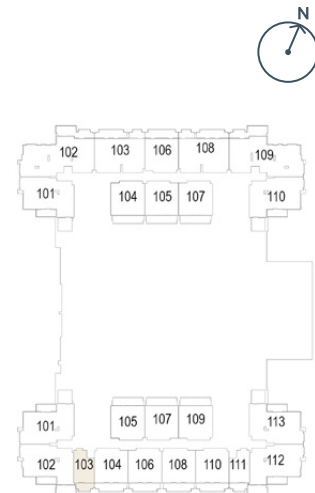
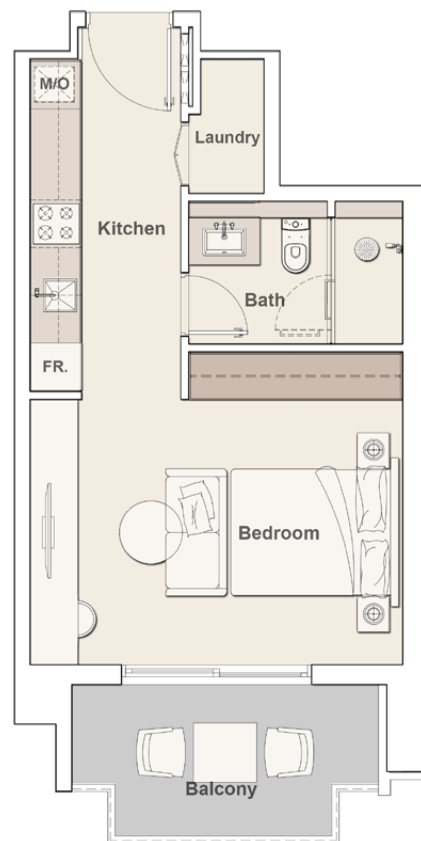
UNIT FLOOR PLANS

Project No.: 2300

# KW

## KENSINGTON WATERS

### STUDIO TYPE A



Internal Living Area 389.22 sq.ft.

Outdoor Living Area 88.59 sq.ft.

Total Living Area 477.81 sq.ft.

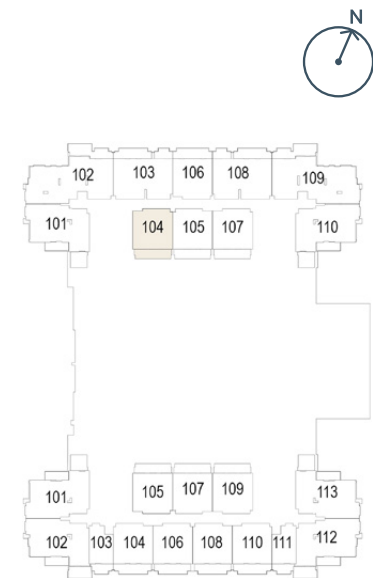
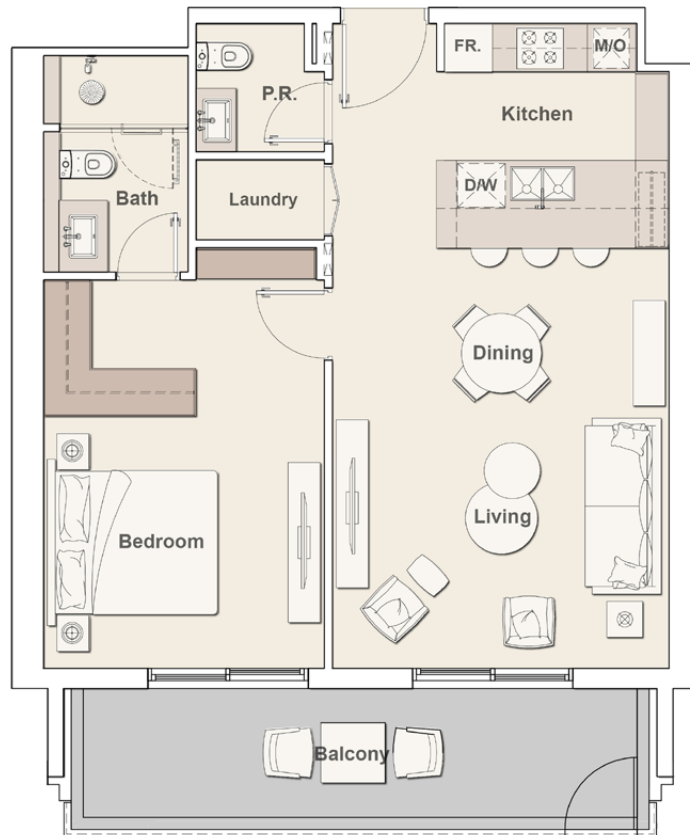
  
**ELLINGTON**  
PROPERTIES

All drawings and dimensions are approximate. Drawings are not to scale and are subject to change without notice. The developer reserves the right to make revisions. The units are taken from the typical floor of the building and columns may vary in size depending on the floor level. The furnishings and accessories shown are for representation only. The length and width of the unit and balcony varies depending on which floor and which orientation the unit is located within the building to comply with the building authority regulations

# KW

## KENSINGTON WATERS

### 1 BEDROOM TYPE A



Internal Living Area 714.40 sq.ft.

Outdoor Living Area 157.69 sq.ft.

Total Living Area 872.09 sq.ft.

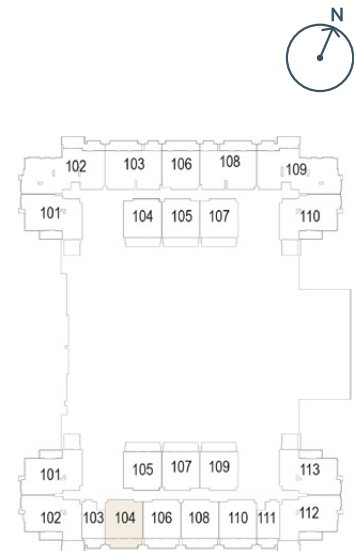
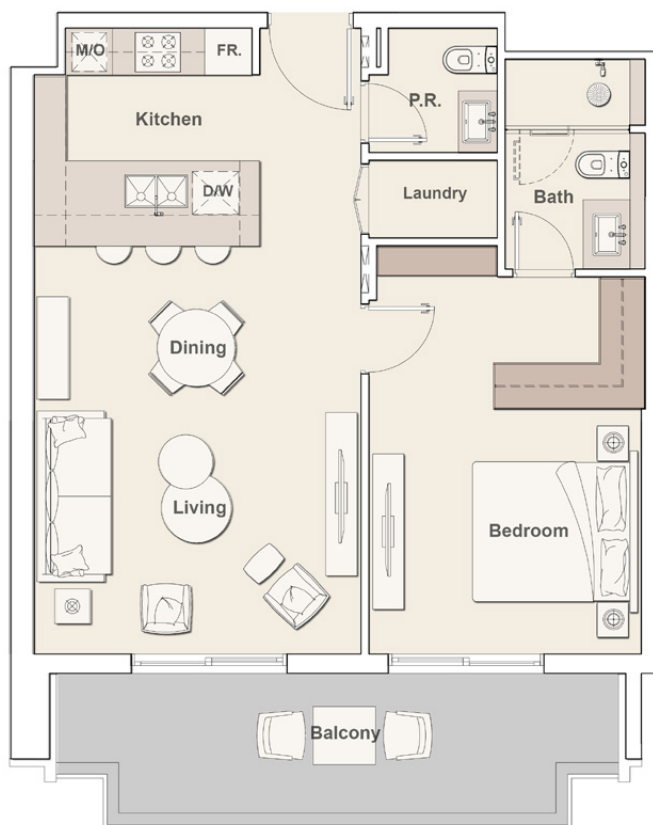
  
**ELLINGTON**  
PROPERTIES

All drawings and dimensions are approximate. Drawings are not to scale and are subject to change without notice. The developer reserves the right to make revisions. The units are taken from the typical floor of the building and columns may vary in size depending on the floor level. The furnishings and accessories shown are for representation only. The length and width of the unit and balcony varies depending on which floor and which orientation the unit is located within the building to comply with the building authority regulations

# KW

## KENSINGTON WATERS

### 1 BEDROOM TYPE B



Internal Living Area 706.00 sq.ft.

Outdoor Living Area 165.12 sq.ft.

Total Living Area 871.12 sq.ft.

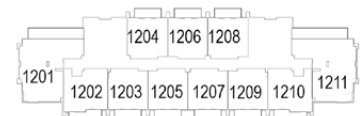
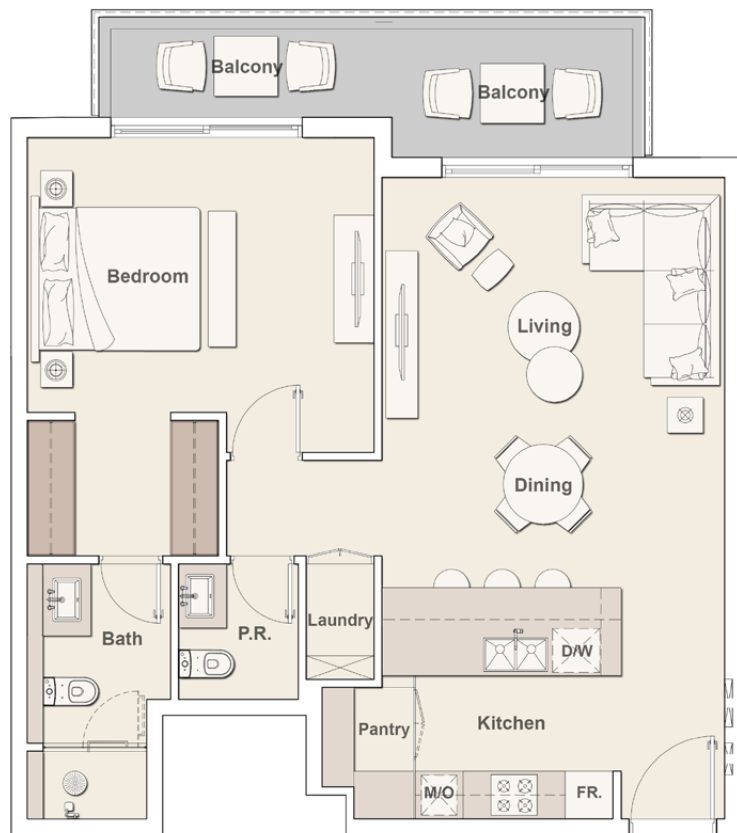
  
**ELLINGTON**  
PROPERTIES

All drawings and dimensions are approximate. Drawings are not to scale and are subject to change without notice. The developer reserves the right to make revisions. The units are taken from the typical floor of the building and columns may vary in size depending on the floor level. The furnishings and accessories shown are for representation only. The length and width of the unit and balcony varies depending on which floor and which orientation the unit is located within the building to comply with the building authority regulations

# KW

## KENSINGTON WATERS

### 1 BEDROOM TYPE C



Internal Living Area 787.92 sq.ft.

Outdoor Living Area 127.34 sq.ft.

Total Living Area 915.25 sq.ft.

  
**ELLINGTON**  
PROPERTIES

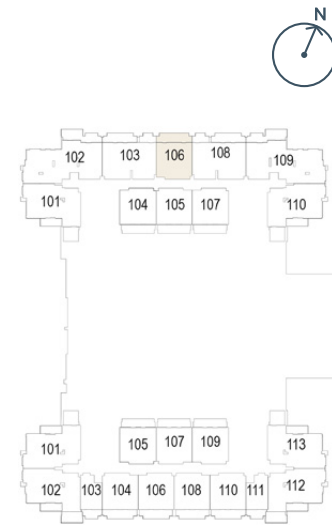
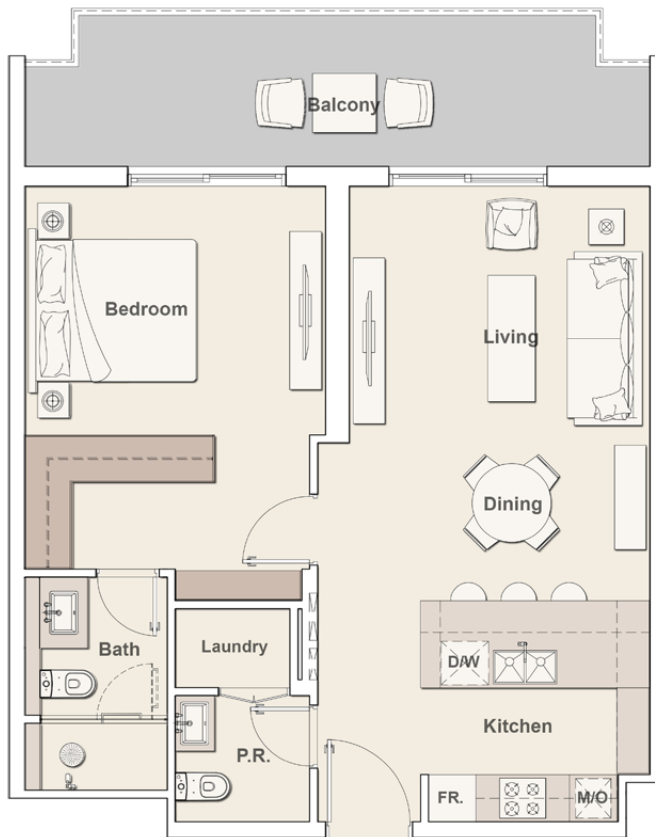
All drawings and dimensions are approximate. Drawings are not to scale and are subject to change without notice. The developer reserves the right to make revisions. The units are taken from the typical floor of the building and columns may vary in size depending on the floor level. The furnishings and accessories shown are for representation only. The length and width of the unit and balcony varies depending on which floor and which orientation the unit is located within the building to comply with the building authority regulations



# KW

## KENSINGTON WATERS

### 1 BEDROOM TYPE D



Internal Living Area 706.76 sq.ft.

Outdoor Living Area 173.08 sq.ft.

Total Living Area 879.84 sq.ft.

  
**ELLINGTON**  
PROPERTIES

All drawings and dimensions are approximate. Drawings are not to scale and are subject to change without notice. The developer reserves the right to make revisions. The units are taken from the typical floor of the building and columns may vary in size depending on the floor level. The furnishings and accessories shown are for representation only. The length and width of the unit and balcony varies depending on which floor and which orientation the unit is located within the building to comply with the building authority regulations

# KW

## KENSINGTON WATERS

### 1 BEDROOM TYPE E



Internal Living Area 781.67 sq.ft.

Outdoor Living Area 127.44 sq.ft.

Total Living Area 909.12 sq.ft.

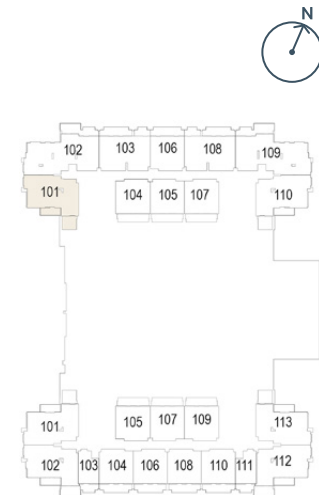
  
**ELLINGTON**  
PROPERTIES

All drawings and dimensions are approximate. Drawings are not to scale and are subject to change without notice. The developer reserves the right to make revisions. The units are taken from the typical floor of the building and columns may vary in size depending on the floor level. The furnishings and accessories shown are for representation only. The length and width of the unit and balcony varies depending on which floor and which orientation the unit is located within the building to comply with the building authority regulations

# KW

## KENSINGTON WATERS

### 2 BEDROOM TYPE A



Internal Living Area 1082.85 sq.ft.

Outdoor Living Area 219.91 sq.ft.

Total Living Area 1302.75 sq.ft.

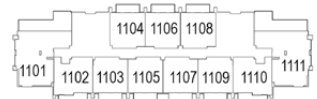
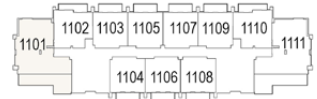
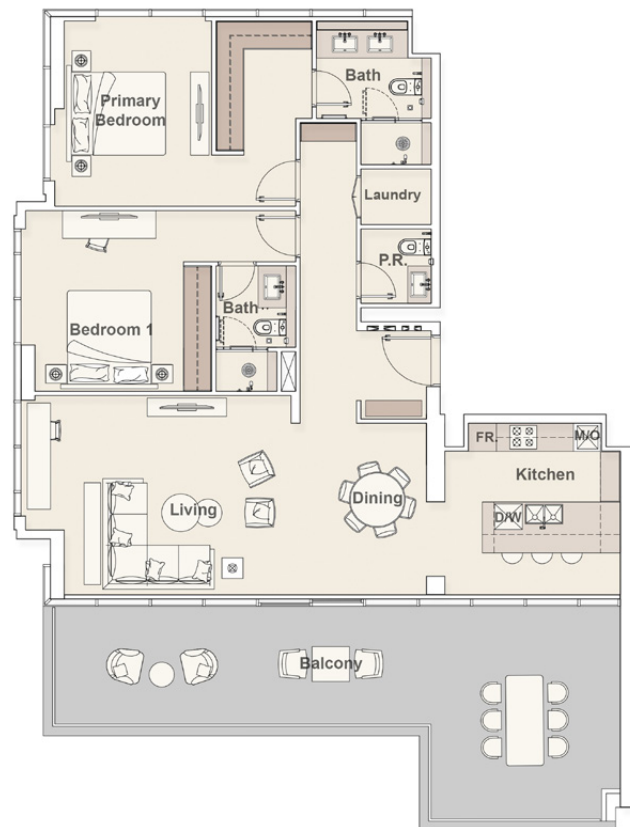
  
**ELLINGTON**  
PROPERTIES

All drawings and dimensions are approximate. Drawings are not to scale and are subject to change without notice. The developer reserves the right to make revisions. The units are taken from the typical floor of the building and columns may vary in size depending on the floor level. The furnishings and accessories shown are for representation only. The length and width of the unit and balcony varies depending on which floor and which orientation the unit is located within the building to comply with the building authority regulations

# KW

## KENSINGTON WATERS

### 2 BEDROOM TYPE B



Internal Living Area 1333.43 sq.ft.

Outdoor Living Area 437.34 sq.ft.

Total Living Area 1770.77 sq.ft.

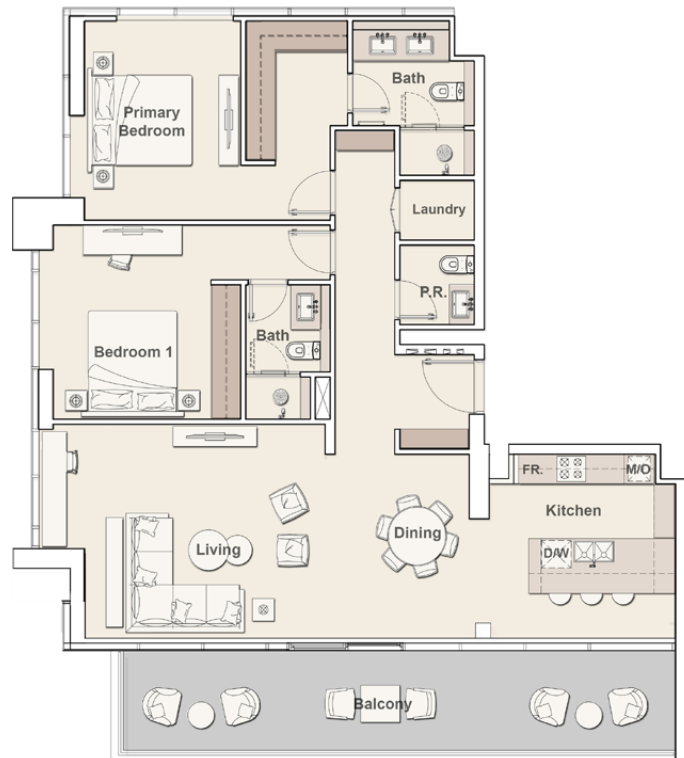
  
**ELLINGTON**  
PROPERTIES

All drawings and dimensions are approximate. Drawings are not to scale and are subject to change without notice. The developer reserves the right to make revisions. The units are taken from the typical floor of the building and columns may vary in size depending on the floor level. The furnishings and accessories shown are for representation only. The length and width of the unit and balcony varies depending on which floor and which orientation the unit is located within the building to comply with the building authority regulations

# KW

## KENSINGTON WATERS

### 2 BEDROOM TYPE C



Internal Living Area 1333.00 sq.ft.

Outdoor Living Area 257.80 sq.ft.

Total Living Area 1590.80 sq.ft.

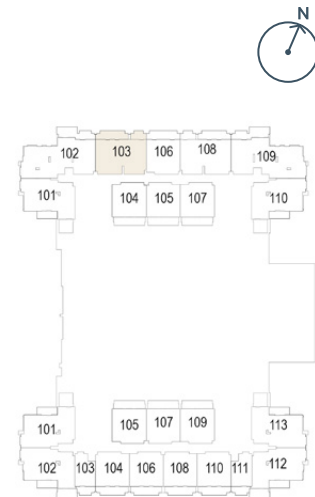
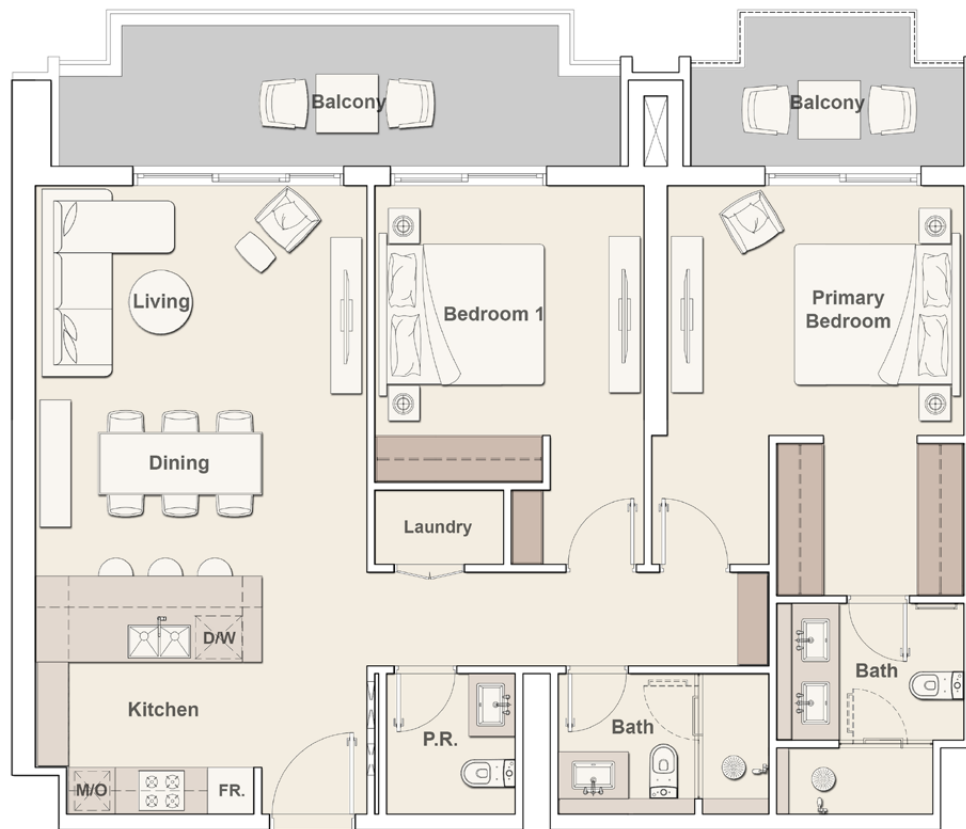
ELLINGTON  
PROPERTIES

All drawings and dimensions are approximate. Drawings are not to scale and are subject to change without notice. The developer reserves the right to make revisions. The units are taken from the typical floor of the building and columns may vary in size depending on the floor level. The furnishings and accessories shown are for representation only. The length and width of the unit and balcony varies depending on which floor and which orientation the unit is located within the building to comply with the building authority regulations

# KW

## KENSINGTON WATERS

### 2 BEDROOM TYPE D



Internal Living Area 1061.21 sq.ft.

Outdoor Living Area 239.82 sq.ft.

Total Living Area 1301.03 sq.ft.

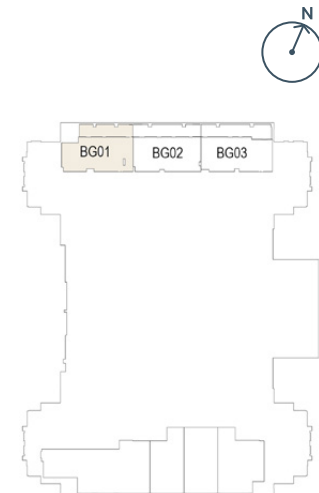
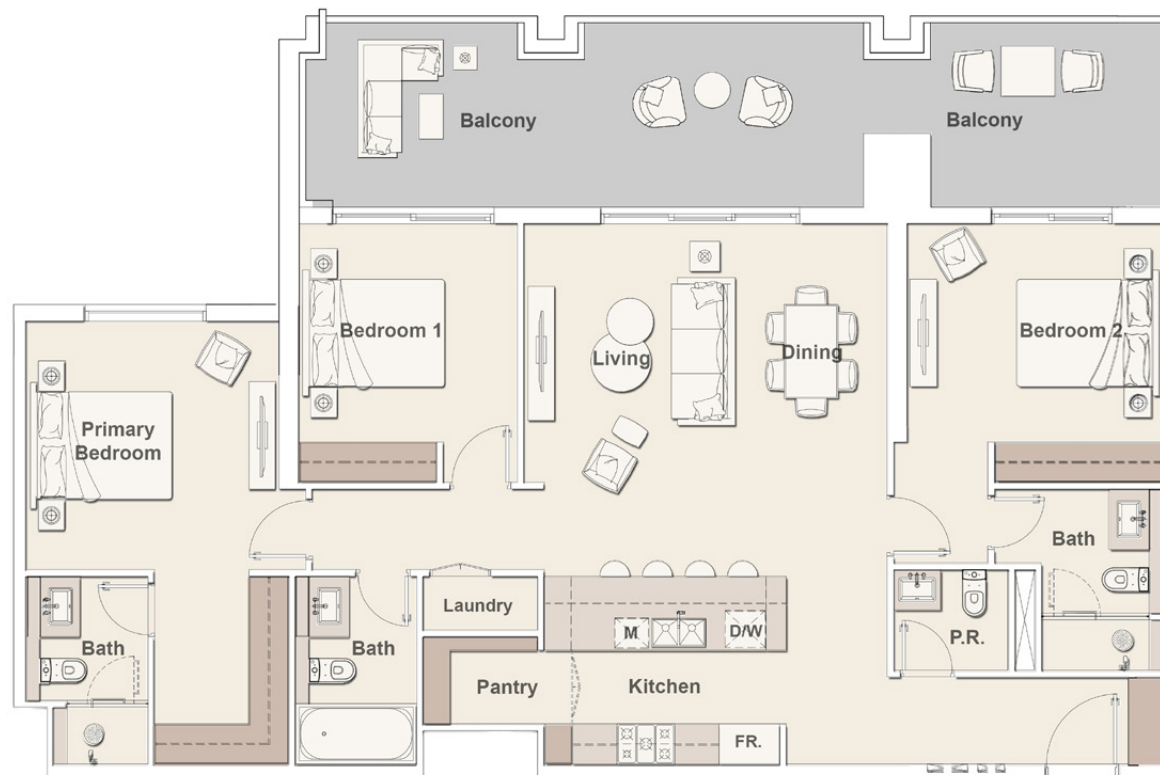
**ELLINGTON**  
PROPERTIES

All drawings and dimensions are approximate. Drawings are not to scale and are subject to change without notice. The developer reserves the right to make revisions. The units are taken from the typical floor of the building and columns may vary in size depending on the floor level. The furnishings and accessories shown are for representation only. The length and width of the unit and balcony varies depending on which floor and which orientation the unit is located within the building to comply with the building authority regulations

# KW

## KENSINGTON WATERS

### 3 BEDROOM TYPE A



Internal Living Area 1433.97 sq.ft.

Outdoor Living Area 409.78 sq.ft.

Total Living Area 1843.75 sq.ft.

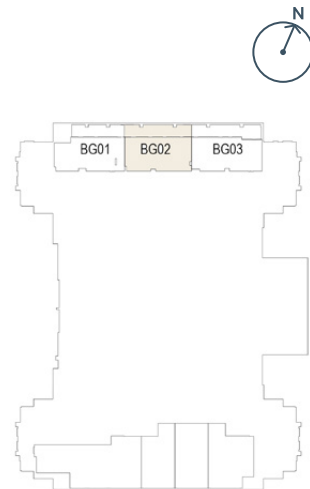
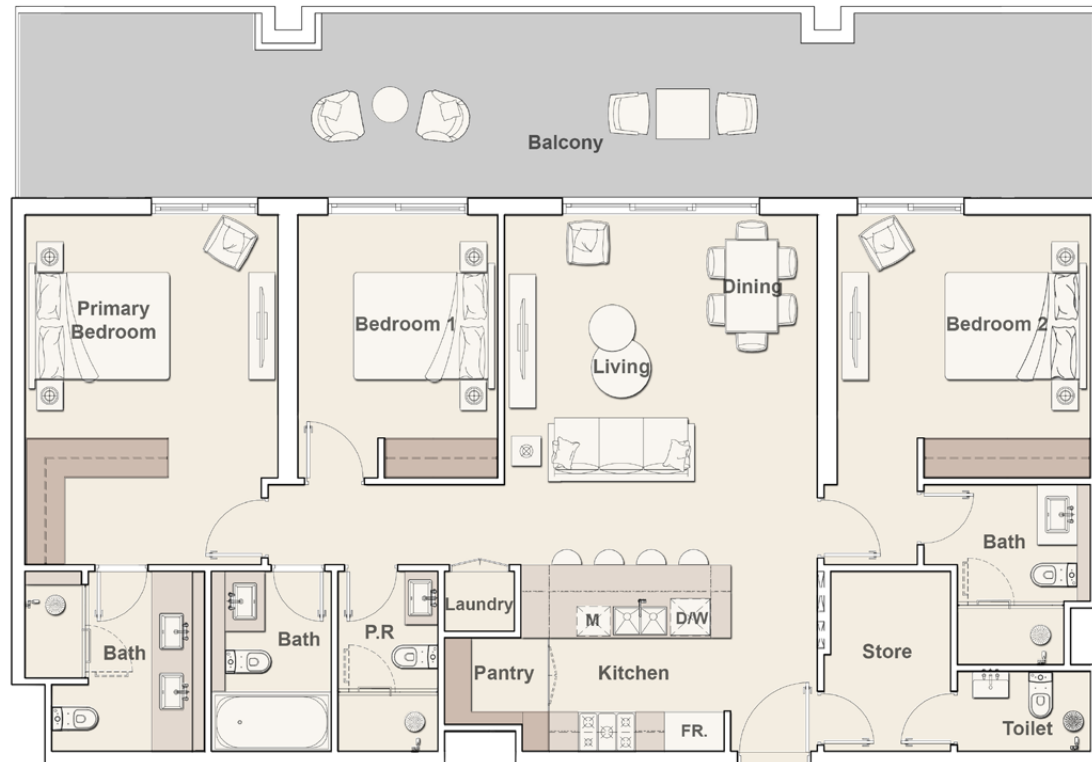
**ELLINGTON**  
PROPERTIES

All drawings and dimensions are approximate. Drawings are not to scale and are subject to change without notice. The developer reserves the right to make revisions. The units are taken from the typical floor of the building and columns may vary in size depending on the floor level. The furnishings and accessories shown are for representation only. The length and width of the unit and balcony varies depending on which floor and which orientation the unit is located within the building to comply with the building authority regulations

# KW

## KENSINGTON WATERS

### 3 BEDROOM TYPE B



Internal Living Area 1422.66 sq.ft.

Outdoor Living Area 509.13 sq.ft.

Total Living Area 1931.80 sq.ft.

  
**ELLINGTON**  
PROPERTIES

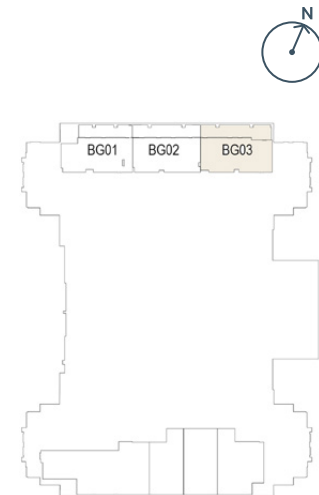
All drawings and dimensions are approximate. Drawings are not to scale and are subject to change without notice. The developer reserves the right to make revisions. The units are taken from the typical floor of the building and columns may vary in size depending on the floor level. The furnishings and accessories shown are for representation only. The length and width of the unit and balcony varies depending on which floor and which orientation the unit is located within the building to comply with the building authority regulations



# KW

## KENSINGTON WATERS

### 3 BEDROOM TYPE C



Internal Living Area 1470.03 sq.ft.

Outdoor Living Area 563.49 sq.ft.

Total Living Area 2035.52 sq.ft.

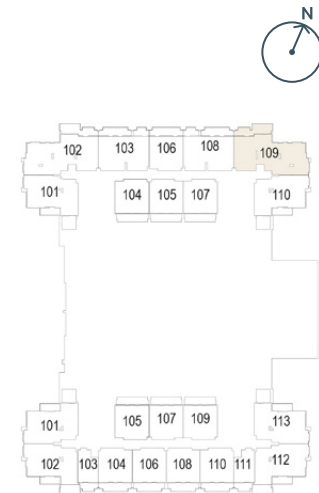
  
**ELLINGTON**  
PROPERTIES

All drawings and dimensions are approximate. Drawings are not to scale and are subject to change without notice. The developer reserves the right to make revisions. The units are taken from the typical floor of the building and columns may vary in size depending on the floor level. The furnishings and accessories shown are for representation only. The length and width of the unit and balcony varies depending on which floor and which orientation the unit is located within the building to comply with the building authority regulations

# KW

## KENSINGTON WATERS

### 3 BEDROOM TYPE D



Internal Living Area 1481.01 sq.ft.

Outdoor Living Area 210.22 sq.ft.

Total Living Area 1691.22 sq.ft.

  
**ELLINGTON**  
PROPERTIES

All drawings and dimensions are approximate. Drawings are not to scale and are subject to change without notice. The developer reserves the right to make revisions. The units are taken from the typical floor of the building and columns may vary in size depending on the floor level. The furnishings and accessories shown are for representation only. The length and width of the unit and balcony varies depending on which floor and which orientation the unit is located within the building to comply with the building authority regulations

