



FLOOR  
PLANS

# UNIT 04 STUDIO

TYPICAL UNIT TYPE 01



## TOTAL AREA

453.70 SQ.FT.    42.15 SQ.M.

## TOTAL INTERNAL AREA

365.87 SQ.FT.    33.99 SQ.M.

## TOTAL EXTERNAL AREA

87.83 SQ.FT.    8.16 SQ.M.

## FLOOR PLATE

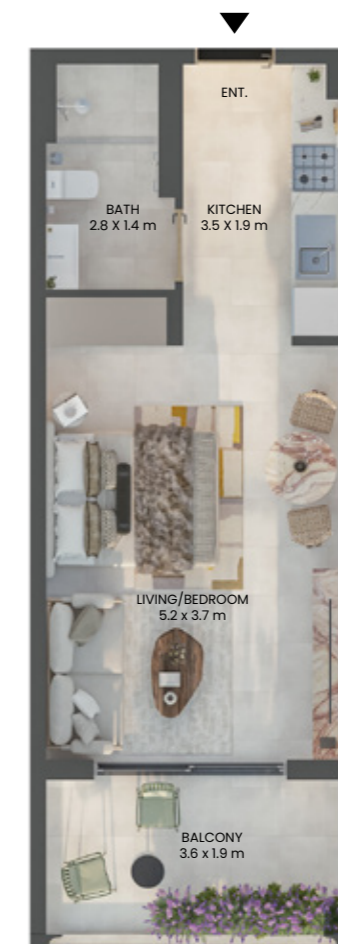


\*Indicative floor plate shows the actual unit in dark beige and typical units of the same type in light beige.

\*\*All drawings and dimensions are approximate. Drawings are not to scale and are subject to change without notice. The developer reserves the right to make revisions. The units are measured as a typical floor in the building and columns may vary in size depending on the floor level. The furnishings and accessories shown are for representation purposes only. The length and width of the unit and balcony varies depending on the floor and orientation, in line with building authority regulations and compliance.

# UNIT 05 STUDIO

TYPICAL UNIT TYPE 02



## TOTAL AREA

454.02 SQ.FT.    42.18 SQ.M.

## TOTAL INTERNAL AREA

366.30 SQ.FT.    34.03 SQ.M.

## TOTAL EXTERNAL AREA

87.73 SQ.FT.    8.15 SQ.M.

## FLOOR PLATE



\*Indicative floor plate shows the actual unit in dark beige and typical units of the same type in light beige.

\*\*All drawings and dimensions are approximate. Drawings are not to scale and are subject to change without notice. The developer reserves the right to make revisions. The units are measured as a typical floor in the building and columns may vary in size depending on the floor level. The furnishings and accessories shown are for representation purposes only. The length and width of the unit and balcony varies depending on the floor and orientation, in line with building authority regulations and compliance.

# UNIT 03 STUDIO

TYPICAL UNIT TYPE 03



## TOTAL AREA

353.59 SQ.FT.    32.85 SQ.M.

## TOTAL INTERNAL AREA

269.10 SQ.FT.    25 SQ.M.

## TOTAL EXTERNAL AREA

84.50 SQ.FT.    7.85 SQ.M.

## FLOOR PLATE



\*Indicative floor plate shows the actual unit in dark beige and typical units of the same type in light beige.

\*\*All drawings and dimensions are approximate. Drawings are not to scale and are subject to change without notice. The developer reserves the right to make revisions. The units are measured as a typical floor in the building and columns may vary in size depending on the floor level. The furnishings and accessories shown are for representation purposes only. The length and width of the unit and balcony varies depending on the floor and orientation, in line with building authority regulations and compliance.

# UNIT 11 STUDIO

TYPICAL UNIT TYPE 04



## TOTAL AREA

353.59 SQ.FT.    32.85 SQ.M.

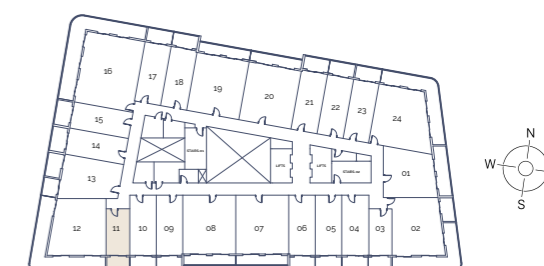
## TOTAL INTERNAL AREA

269.10 SQ.FT.    25 SQ.M.

## TOTAL EXTERNAL AREA

84.50 SQ.FT.    7.85 SQ.M.

## FLOOR PLATE



\*Indicative floor plate shows the actual unit in dark beige and typical units of the same type in light beige.

\*\*All drawings and dimensions are approximate. Drawings are not to scale and are subject to change without notice. The developer reserves the right to make revisions. The units are measured as a typical floor in the building and columns may vary in size depending on the floor level. The furnishings and accessories shown are for representation purposes only. The length and width of the unit and balcony varies depending on the floor and orientation, in line with building authority regulations and compliance.

# UNIT 01

# 1 BEDROOM

TYPICAL UNIT TYPE 01



## TOTAL AREA

723.55 SQ.FT.      67.22 SQ.M.

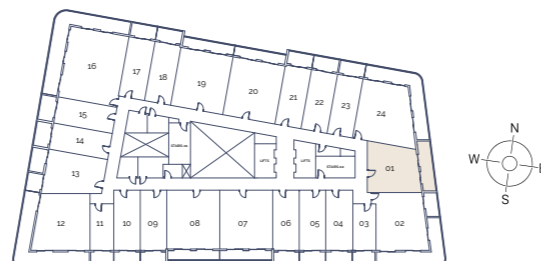
## TOTAL INTERNAL AREA

552.73 SQ.FT.      51.35 SQ.M.

## TOTAL EXTERNAL AREA

170.82 SQ.FT.      15.87 SQ.M.

## FLOOR PLATE



\*Indicative floor plate shows the actual unit in dark beige and typical units of the same type in light beige.

\*\*All drawings and dimensions are approximate. Drawings are not to scale and are subject to change without notice. The developer reserves the right to make revisions. The units are measured as a typical floor in the building and columns may vary in size depending on the floor level. The furnishings and accessories shown are for representation purposes only. The length and width of the unit and balcony varies depending on the floor and orientation, in line with building authority regulations and compliance.

# UNIT 07

# 1 BEDROOM

TYPICAL UNIT TYPE 02



## TOTAL AREA

846.90 SQ.FT.      78.68 SQ.M.

## TOTAL INTERNAL AREA

717.63 SQ.FT.      66.67 SQ.M.

## TOTAL EXTERNAL AREA

129.27 SQ.FT.      12.01 SQ.M.

## FLOOR PLATE



\*Indicative floor plate shows the actual unit in dark beige and typical units of the same type in light beige.

\*\*All drawings and dimensions are approximate. Drawings are not to scale and are subject to change without notice. The developer reserves the right to make revisions. The units are measured as a typical floor in the building and columns may vary in size depending on the floor level. The furnishings and accessories shown are for representation purposes only. The length and width of the unit and balcony varies depending on the floor and orientation, in line with building authority regulations and compliance.

# UNIT 08

# 1 BEDROOM

TYPICAL UNIT TYPE 03



## TOTAL AREA

846.15 SQ.FT.      78.61 SQ.M.

## TOTAL INTERNAL AREA

716.88 SQ.FT.      66.60 SQ.M.

## TOTAL EXTERNAL AREA

129.27 SQ.FT.      12.01 SQ.M.

## FLOOR PLATE



\*Indicative floor plate shows the actual unit in dark beige and typical units of the same type in light beige.

\*\*All drawings and dimensions are approximate. Drawings are not to scale and are subject to change without notice. The developer reserves the right to make revisions. The units are measured as a typical floor in the building and columns may vary in size depending on the floor level. The furnishings and accessories shown are for representation purposes only. The length and width of the unit and balcony varies depending on the floor and orientation, in line with building authority regulations and compliance.

# UNIT 13

# 1 BEDROOM

TYPICAL UNIT TYPE 04



## TOTAL AREA

699.12 SQ.FT.      64.95 SQ.M.

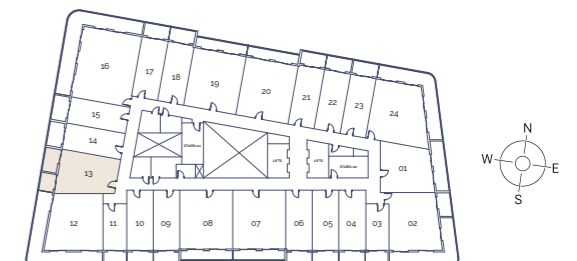
## TOTAL INTERNAL AREA

532.06 SQ.FT.      49.43 SQ.M.

## TOTAL EXTERNAL AREA

167.06 SQ.FT.      15.52 SQ.M.

## FLOOR PLATE



\*Indicative floor plate shows the actual unit in dark beige and typical units of the same type in light beige.

\*\*All drawings and dimensions are approximate. Drawings are not to scale and are subject to change without notice. The developer reserves the right to make revisions. The units are measured as a typical floor in the building and columns may vary in size depending on the floor level. The furnishings and accessories shown are for representation purposes only. The length and width of the unit and balcony varies depending on the floor and orientation, in line with building authority regulations and compliance.

UNIT 02

# 2 BEDROOM

TYPICAL UNIT TYPE 01



**TOTAL AREA**

1100.72 SQ.FT.    102.26 SQ.M.

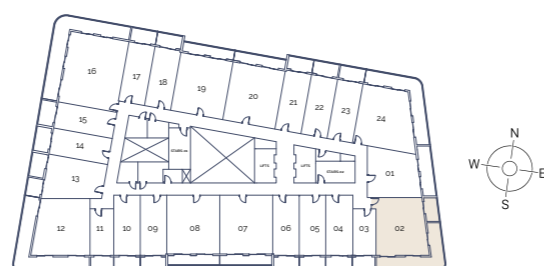
**TOTAL INTERNAL AREA**

685.88 SQ.FT.    63.72 SQ.M.

**TOTAL EXTERNAL AREA**

414.84 SQ.FT.    38.54 SQ.M.

**FLOOR PLATE**



\*Indicative floor plate shows the actual unit in dark beige and typical units of the same type in light beige.

\*\*All drawings and dimensions are approximate. Drawings are not to scale and are subject to change without notice. The developer reserves the right to make revisions. The units are measured as a typical floor in the building and columns may vary in size depending on the floor level. The furnishings and accessories shown are for representation purposes only. The length and width of the unit and balcony varies depending on the floor and orientation, in line with building authority regulations and compliance.

UNIT 12

# 2 BEDROOM

TYPICAL UNIT TYPE 02



**TOTAL AREA**

1182.52 SQ.FT.    109.86 SQ.M.

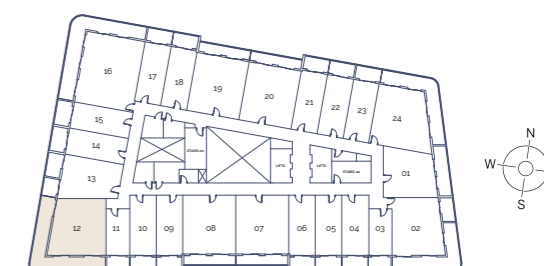
**TOTAL INTERNAL AREA**

719.46 SQ.FT.    66.84 SQ.M.

**TOTAL EXTERNAL AREA**

463.06 SQ.FT.    43.02 SQ.M.

**FLOOR PLATE**



\*Indicative floor plate shows the actual unit in dark beige and typical units of the same type in light beige.

\*\*All drawings and dimensions are approximate. Drawings are not to scale and are subject to change without notice. The developer reserves the right to make revisions. The units are measured as a typical floor in the building and columns may vary in size depending on the floor level. The furnishings and accessories shown are for representation purposes only. The length and width of the unit and balcony varies depending on the floor and orientation, in line with building authority regulations and compliance.

# UNIT 24

## 2 BEDROOM

TYPICAL UNIT TYPE 03



### TOTAL AREA

1131.50 SQ.FT. 105.12 SQ.M.

### TOTAL INTERNAL AREA

765.42 SQ.FT. 71.11 SQ.M.

### TOTAL EXTERNAL AREA

366.08 SQ.FT. 34.01 SQ.M.

### FLOOR PLATE



\*Indicative floor plate shows the actual unit in dark beige and typical units of the same type in light beige.

\*\*All drawings and dimensions are approximate. Drawings are not to scale and are subject to change without notice. The developer reserves the right to make revisions. The units are measured as a typical floor in the building and columns may vary in size depending on the floor level. The furnishings and accessories shown are for representation purposes only. The length and width of the unit and balcony varies depending on the floor and orientation, in line with building authority regulations and compliance.

# UNIT 16

## 3 BEDROOM

TYPICAL UNIT TYPE 01



### TOTAL AREA

1527.18 SQ.FT. 141.88 SQ.M.

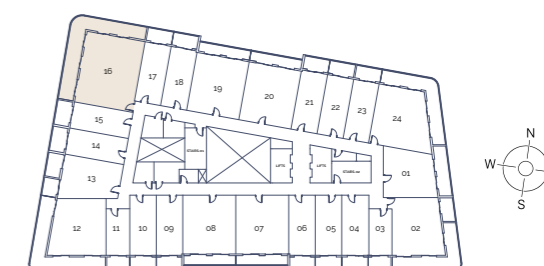
### TOTAL INTERNAL AREA

1005.56 SQ.FT. 93.42 SQ.M.

### TOTAL EXTERNAL AREA

521.62 SQ.FT. 48.46 SQ.M.

### FLOOR PLATE



\*Indicative floor plate shows the actual unit in dark beige and typical units of the same type in light beige.

\*\*All drawings and dimensions are approximate. Drawings are not to scale and are subject to change without notice. The developer reserves the right to make revisions. The units are measured as a typical floor in the building and columns may vary in size depending on the floor level. The furnishings and accessories shown are for representation purposes only. The length and width of the unit and balcony varies depending on the floor and orientation, in line with building authority regulations and compliance.