



DEANSGATE

BY ADE

Affordable. Luxurious. Exceptional.





DISCOVER

 **DEANSGATE**
BY ADE

Your Gateway to Modern Urban Living
in Majan, Dubai

Developed by


PROPERTIES



DEANSGATE BY ADE

Welcome to **Deansgate by ADE**, a captivating architectural masterpiece nestled in the heart of **Majan, Dubai**. This contemporary marvel stands tall, boasting a dynamic structure that seamlessly integrates modern living with commercial convenience, from its inviting ground floor to 10 floors of Residential spaces.

Including **Studios, 1 BHK, 2 BHK, 3 BHK, and 4 BHK residences**, each meticulously designed to cater to your unique lifestyle. But that's not all – with retail shops at your doorstep, Deansgate promises a vibrant, all-encompassing urban experience like no other.

Experience the ideal modern living in **Majan, Dubai**; welcome to **Deansgate by ADE**.

ABOUT
MAJAN


Majan, situated in the heart of DubaiLand, is an up-and-coming community spanning an impressive 15.6 million square feet of land.


Majan provides its residents with a blend of luxury, convenience, and leisure, all nestled within a beautifully connected neighborhood filled with amenities.


As it continues to grow and evolve, Majan is on the cusp of becoming the bustling downtown epicenter of DubaiLand in the near future.




 **Burj Khalifa**
The Dubai Mall
20 mins


 **Burj Al Arab**
20 mins


 **Dubai International Airport**
20 mins


 **IMG Worlds of Adventure**
5 mins


 **Global Village**
5 mins

 **Mall of the Emirates**
16 mins

 **City Land Mall**
8 mins

 **Silicon Central Mall**
10 mins

 **Majan Public Park**
3 mins

 **Al Barari Park**
5 mins





DEANSGATE ELEVATION

Deansgate has a captivating elevation with a harmonious blend of clean lines and modern materials, the elevation is a visual masterpiece that leaves a lasting impression. Whether from the street or approaching the building, the architecture showcases a unique use of light and shadow that adds depth and character to the structure.



MAIN ENTRANCE

As you approach the main entrance, you'll be greeted by a design that seamlessly blends modern aesthetics with a touch of timeless elegance. The landscaping and carefully curated elements make it a welcoming space, setting the tone for the exceptional living experience that awaits within our community.



RECEPTION

Deansgate's reception, where luxury and sophistication combine to offer you a warm and inviting welcome. This is where your journey begins, as you experience the exceptional lifestyle and attention to detail that our project embodies.



MAIN LOBBY

The lobby is a captivating introduction to the refined living experience that Deansgate offers. With its tasteful fusion of materials and natural light, this space is where connections are made and memories begin.



LIFT LOBBY

Our elevators are designed to enhance your experience. With a modern and welcoming atmosphere provided by the **three passenger** elevators and a dedicated **service lift**.



SMART LIVING STARTS HERE

WITH INTEGRATED HOME AUTOMATION

Effortlessly control lighting, climate, security and curtains at the touch of a button. Embrace the future of home living and make your move to a residence where convenience, comfort and innovation converge.



Aqara



EMBRACE COMFORT
& SOPHISTICATION



SIMPLIFY YOUR
SLEEP SPACE





SLEEK AESTHETICS & PRACTICALITY

APPLIANCES INCLUDED



Fridge



Washing
Machine



Hob



Oven



EFFORTLESSLY ELEGANT &
SERENE EXPERIENCE





PENTHOUSE

Discover the luxury living in our penthouses with private pools, available in three and four-bedroom layouts. Perched atop our stunning building, featuring spacious living areas, breathtaking city views and amenities.



PENTHOUSE PRIVATE POOL

Unwind in your private pool, host stylish gatherings, or simply relax in the luxurious interiors. Our penthouses redefine modern luxury living, offering comfort and peace at every turn.



AMENITIES

-  Gazebo Sitting
-  Outdoor Running Track
-  Parking
-  Outdoor Swimming Pool
-  Outdoor Gym
-  Home Automation
-  BBQ Area
-  Kids Play Area
-  Water Feature
-  Kids Swimming Pool
-  Indoor Gym
-  Outdoor Seats



OUTDOOR SWIMMING POOL

Immerse yourself in luxury and relaxation with the outdoor swimming pool. It provides a perfect rejuvenating escape in the warm sunlight. Children can also enjoy a separate kids' swimming pool near the main pool area, ensuring everyone can make the most of their time.



INDOOR & OUTDOOR GYMS

Experience the fitness convenience with the indoor and outdoor gyms located right within the building. Equipped with a variety of exercise stations and machines, you can maintain your fitness goals in the most convenient and inspiring way possible. Additionally, a designated jogging track is available for your running sessions.



KIDS PLAY AREA

Designed with fun and safety in mind, our playground is a colorful and joyous place for children of all ages. With thrilling slides and climbing structures, kids can explore and create unforgettable memories in our dynamic playground.



GAZEBO SITTING AREA

This charming spot offers a serene area to relax and enjoy the outdoors. Sit back and unwind in comfortable seating as you enjoy the fresh air and greenery surrounding you. Our gazebo sitting area provides peace for everyone to enjoy.



PROJECT FACTS

PROJECT NAME	DEANSGATE by ADE
DEVELOPER NAME	A D E Properties L.L.C
DEVELOPER REG. NO.	1551
MASTER DEVELOPER	Liwan (L.L.C)
LOCATION	Majan, Wadi Al Safa 3, Dubai, UAE
DLD PLOT NO.	1001
DESCRIPTION	G + P + 10F + R
ESTIMATED COMPLETION	Q1 2025
PROJECT REG. NO.	2842

NUMBER OF UNITS

Studios	14
1 BHK	40
2 BHK	26
3 BHK	1
4 BHK	1
Retail	5

AVERAGE SIZE (sq.ft)

465
928 - 2,710
1,584 - 2,380
4,112
4,700
341 - 1,010

APPLIANCES INCLUDED



Fridge



Washing
Machine



Hob



Oven





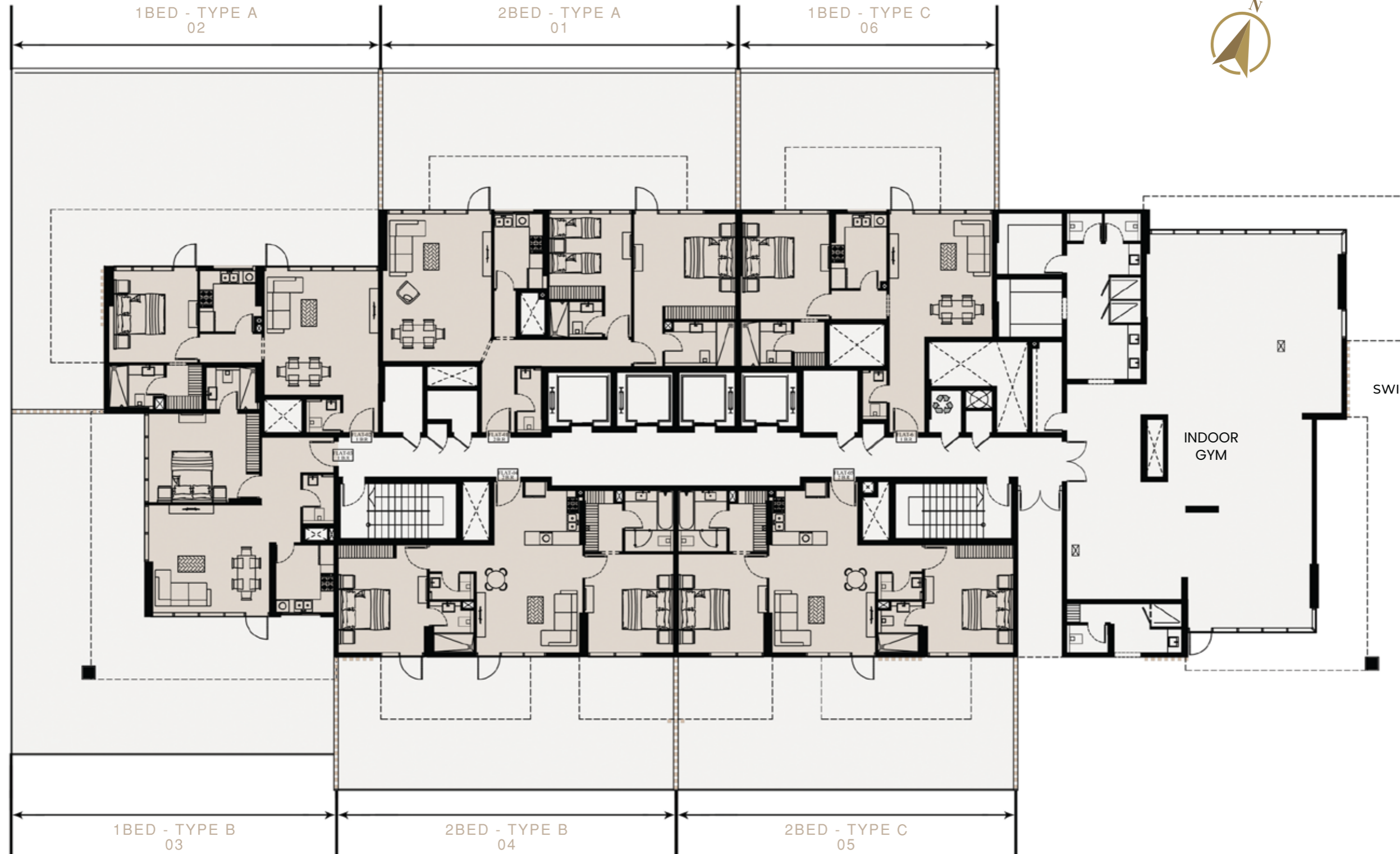
FIRST FLOOR PLAN

AL BARARI VIEW



COMMUNITY VIEW

SWIMMING POOL VIEW



SHEIKH MOHAMMED BIN ZAYED ROAD VIEW



2ND, 5TH AND 8TH TYPICAL FLOOR PLANS

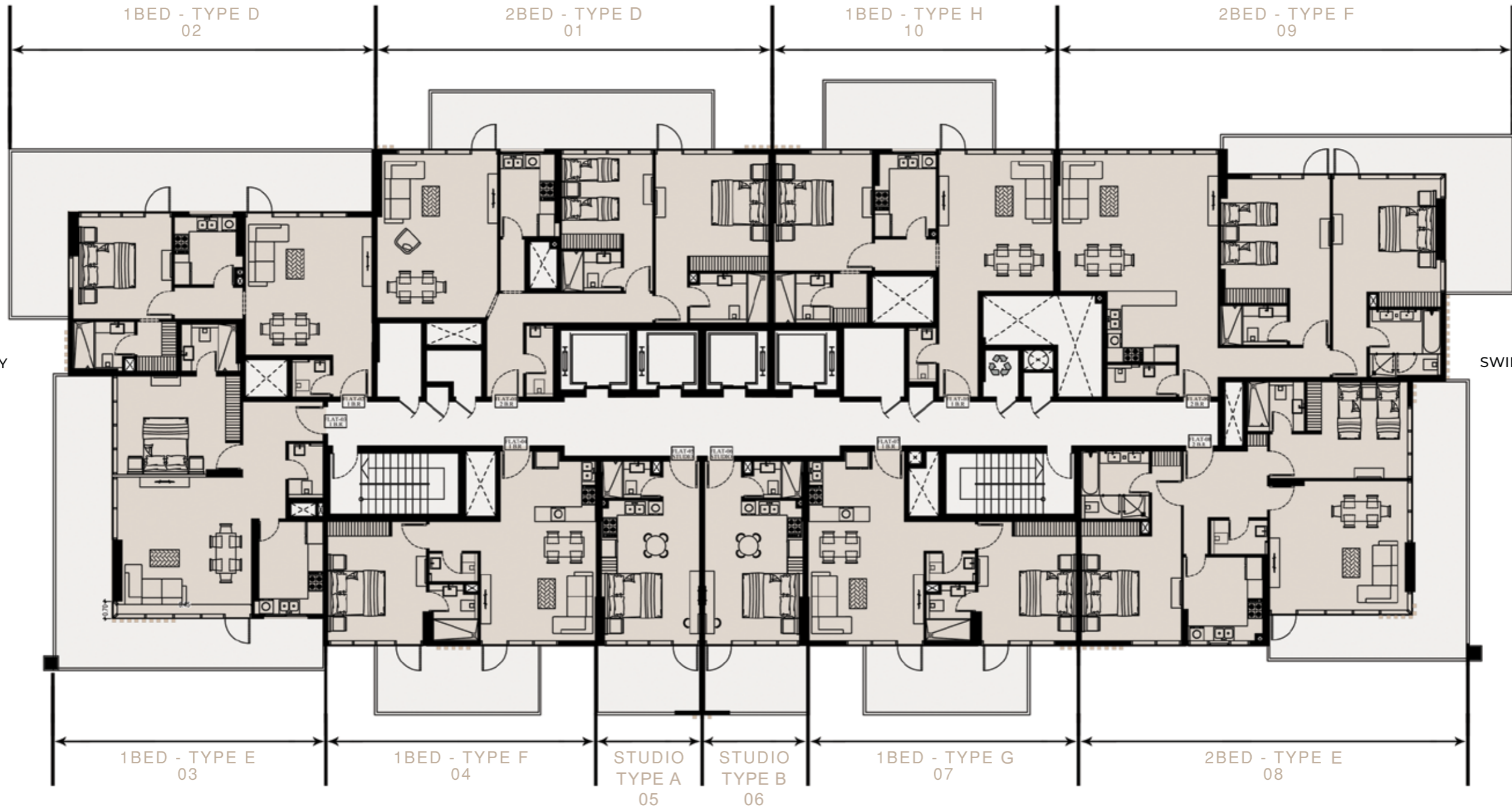


AL BARARI VIEW

COMMUNITY VIEW

SWIMMING POOL VIEW

SHEIKH MOHAMMED BIN ZAYED ROAD VIEW





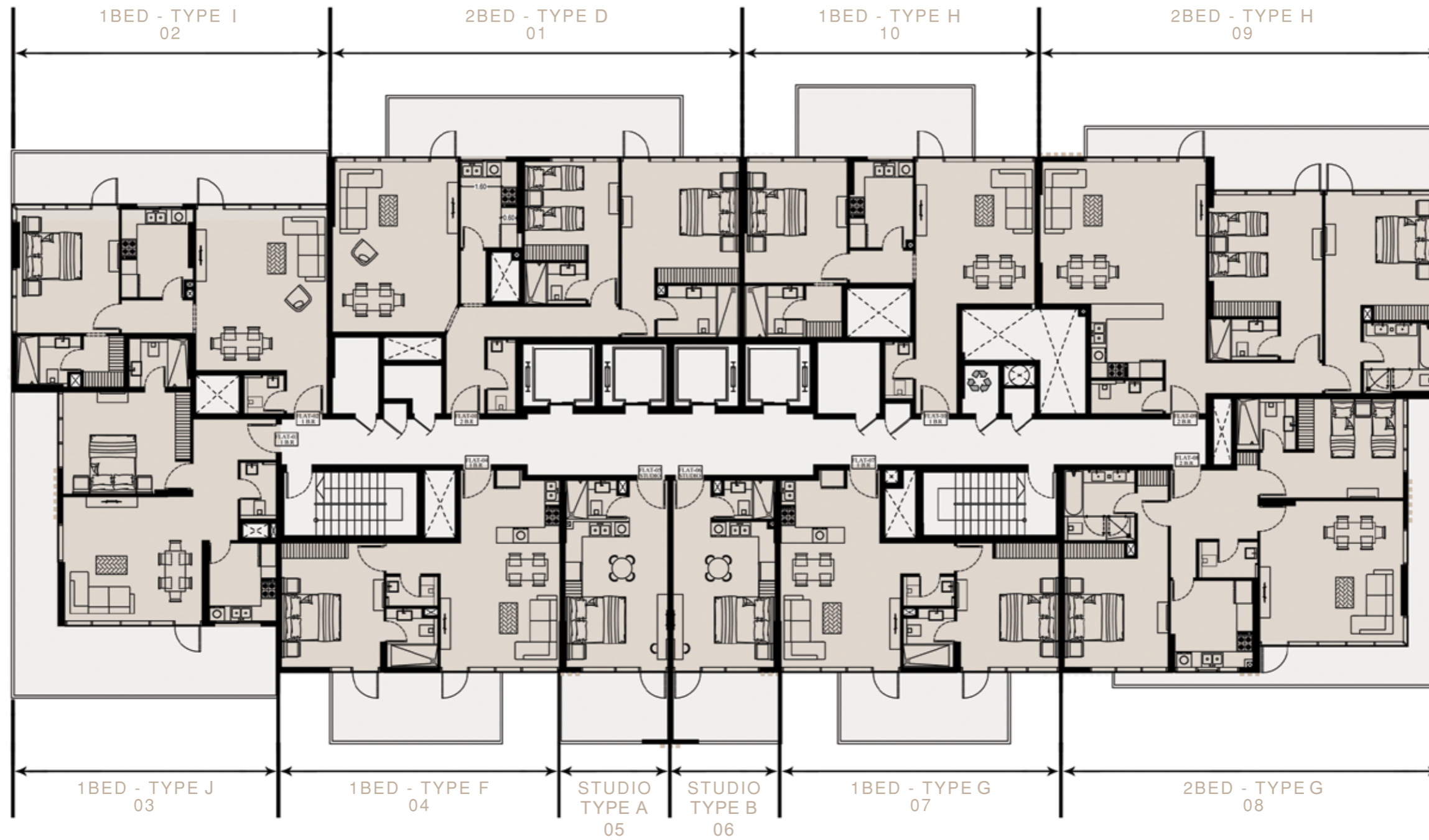
3RD AND 6TH TYPICAL FLOOR PLANS



AL BARARI VIEW

COMMUNITY VIEW

SWIMMING POOL VIEW



SHEIKH MOHAMMED BIN ZAYED ROAD VIEW



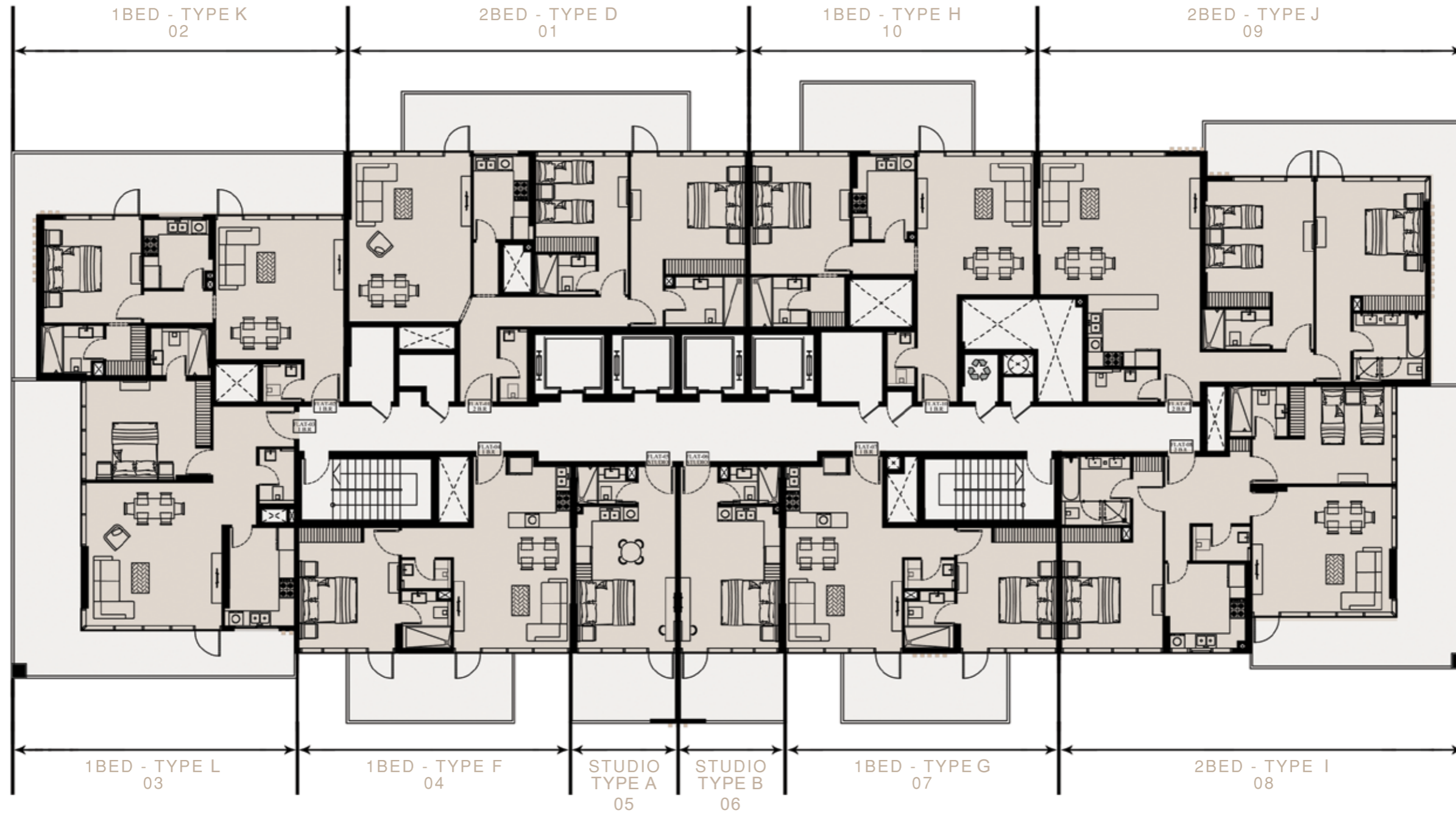
4TH AND 7TH TYPICAL FLOOR PLANS



AL BARARI VIEW

COMMUNITY VIEW

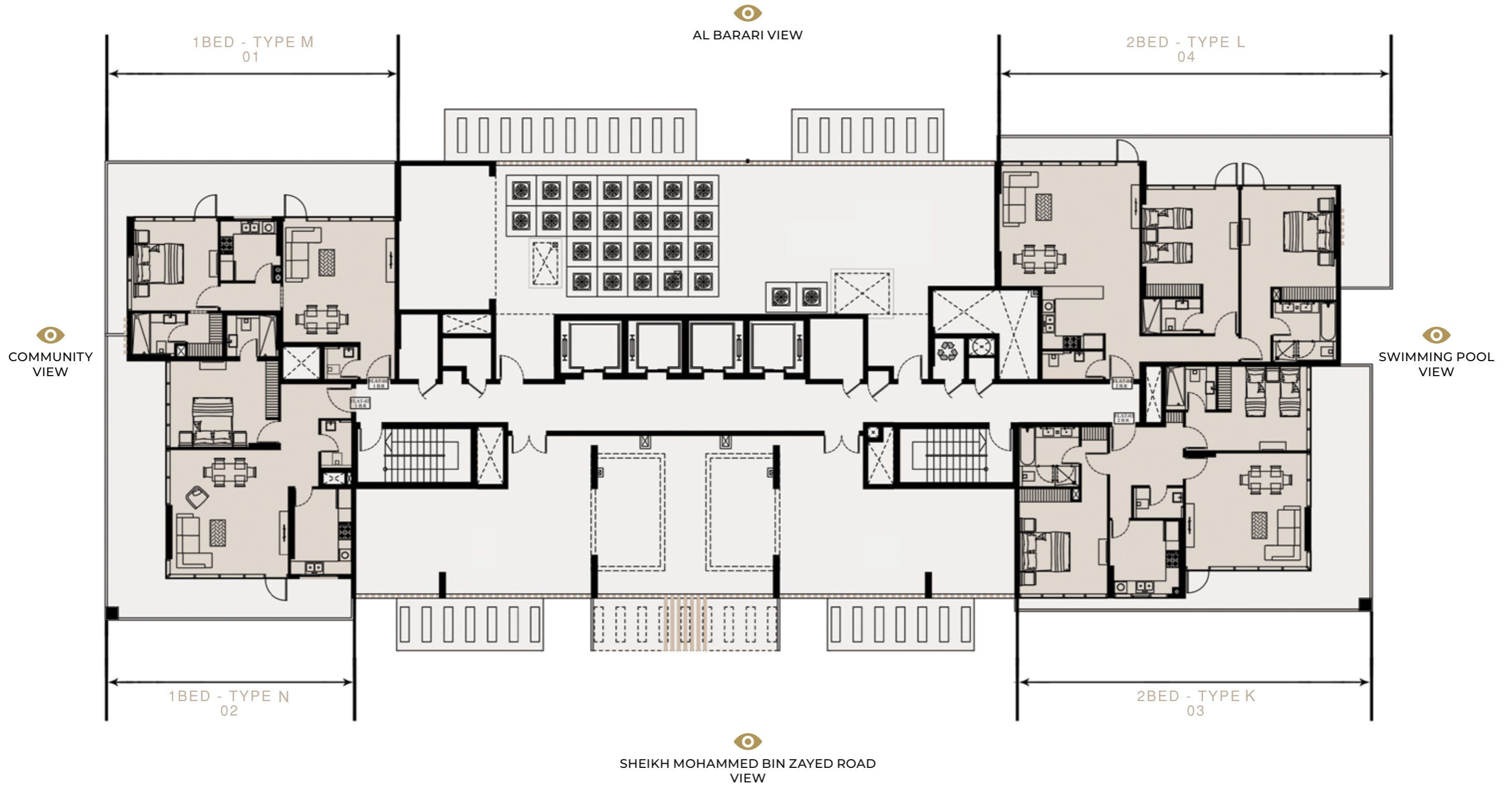
SWIMMING POOL VIEW



SHEIKH MOHAMMED BIN ZAYED ROAD VIEW



9TH FLOOR PLAN





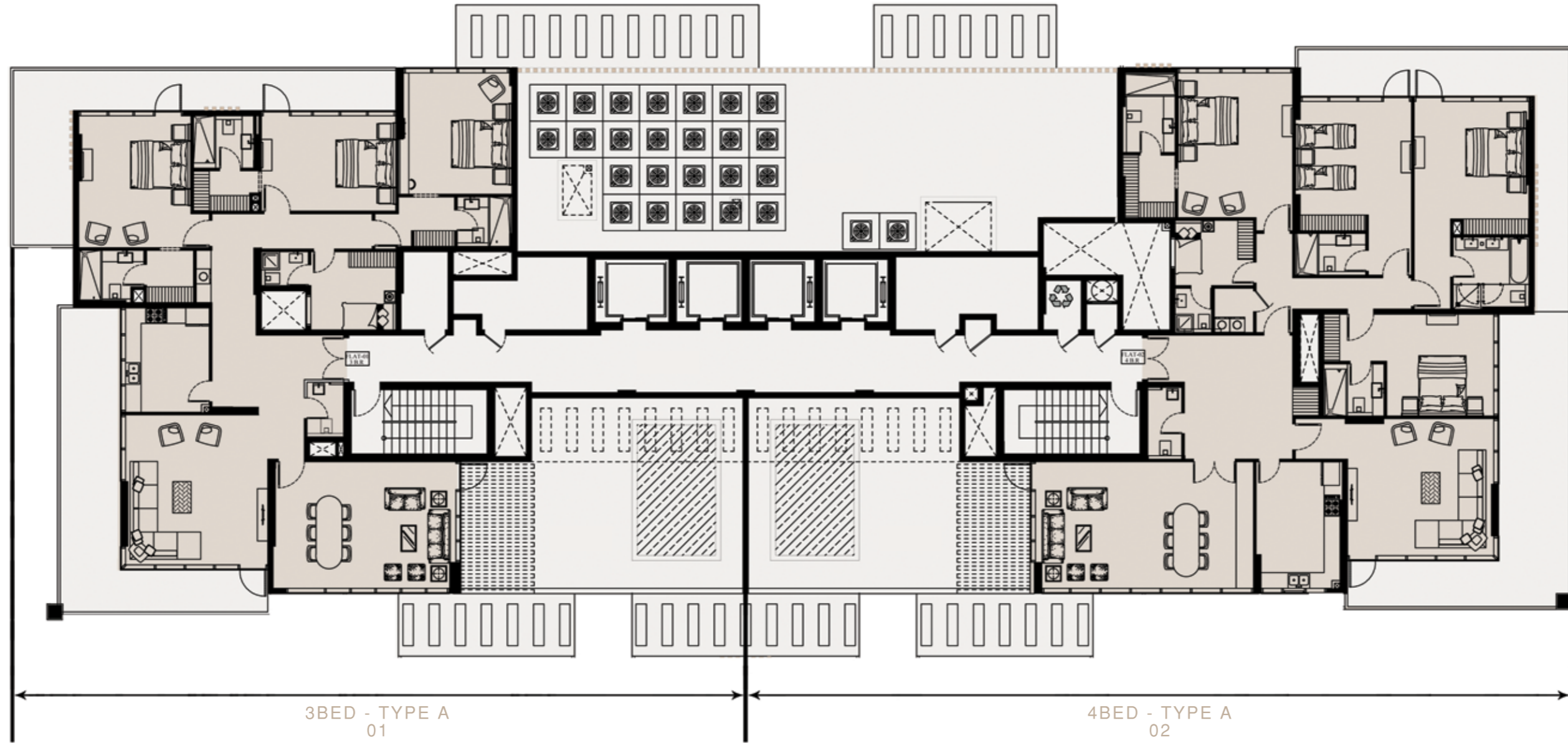
10TH FLOOR PLAN



AL BARARI VIEW

COMMUNITY VIEW

SWIMMING POOL VIEW



3BED - TYPE A
01

4BED - TYPE A
02

SHEIKH MOHAMMED BIN ZAYED ROAD
VIEW