



ART BAY

PROJECT BRIEF



HOME IS A WORK OF ART

Set along the banks of the Al Jaddaf Waterfront, Dutco and Ellington Properties' latest residential offering bring a new level of curated lifestyle to the heart of the arts and culture scene in one of Dubai's most exciting new locations.

Art Bay, a lifestyle masterpiece, celebrates the harmony between design and culture, creating a symphony of wellness for its residents with a variety of amenities on offer. Featuring waterfront apartments, including studios, 2, 1, and 3-bedroom units with views of Dubai Creek.

WELCOME TO A LIFESTYLE MASTERPIECE

A new vision of urban life emerges,
where art, culture, and wellness
seamlessly integrate into the daily
lives of all residents.



A JOINT DEDICATION
TO EXCELLENCE

In their second collaboration, Dutco and Ellington are consolidating their wealth of experience and expertise to develop their first residential development in Al Jaddaf, Art Bay under the Dutco Ellington brand. By merging Ellington's resident-centric philosophy, meticulous attention to detail, and lifestyle curation with Dutco's renowned real estate proficiency, and top-tier quality. This partnership not only signifies a new chapter of expansion for Ellington but also serves as a testament to Dutco's enduring commitment to delivering the utmost standards in the industry.





SET ALONG THE BANKS OF
DUBAI CREEK IN AL JADDAF

DRIVING DISTANCES

- 1 Minute Al Jaddaf Waterfront Park
- 2 Minutes Jameel Arts Centre, Jaddaf Waterfront Sculpture Park, Al Jaddaf Metro Station, Palazzo Versace Dubai
- 4 Minutes Mohammed Bin Rashid Library
- 6 Minutes Dubai Festival City Mall, Dubai International Airport
- 8 Minutes Zabeel Stadium, Latifa Women and Children Hospital
- 11 Minutes Ras Al Khor Wildlife Sanctuary, Business Bay, Burj Khalifa and Dubai Mall
- 12 Minutes Dubai Dolphinarium
- 13 Minutes Dubai Creek Golf and Yacht Club, Museum of the Future
- 15 Minutes Dubai Creek Harbour
- 16 Minutes Dubai International Financial Centre
- 17 Minutes Jumeirah Beach
- 20 Minutes Mall of the Emirates
- 27 Minutes Palm Jumeirah

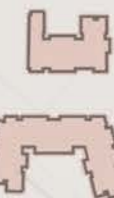


PALAZZO VERSACE

SUN AND VIEWS ANALYSIS

EAST

WEST



S

W

N

E

WINTER SUNSET

WINTER SUNSET

CITY VIEW

MAIN ROAD

SUMMER SUNRISE

CREEK VIEW

PROMENADE

CREEK VIEW

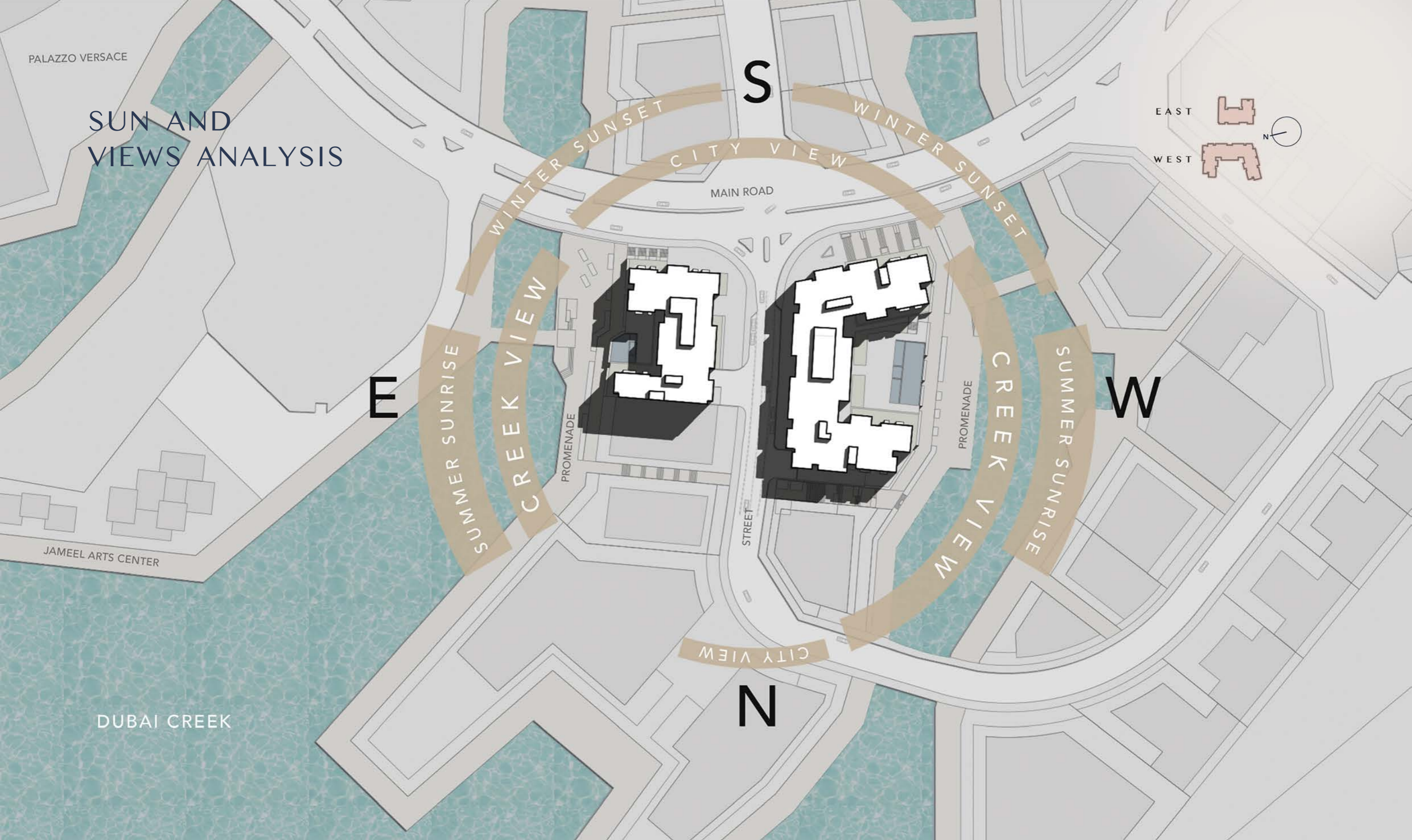
SUMMER SUNRISE

PROMENADE

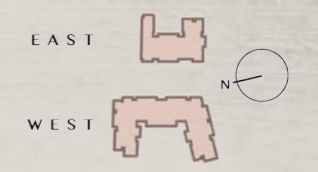
CITY VIEW

JAMEEL ARTS CENTER

DUBAI CREEK



ACTUAL PROJECT VIEW



View of Jameel Arts Centre and Palazzo Versace

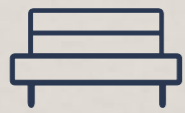


Dubai Culture Village Promenade



View of Dubai Creek

DESIGN ATTRIBUTES



Outdoor comfort



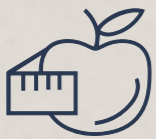
Indoor comfort



Views



Environment



Healthy lifestyle



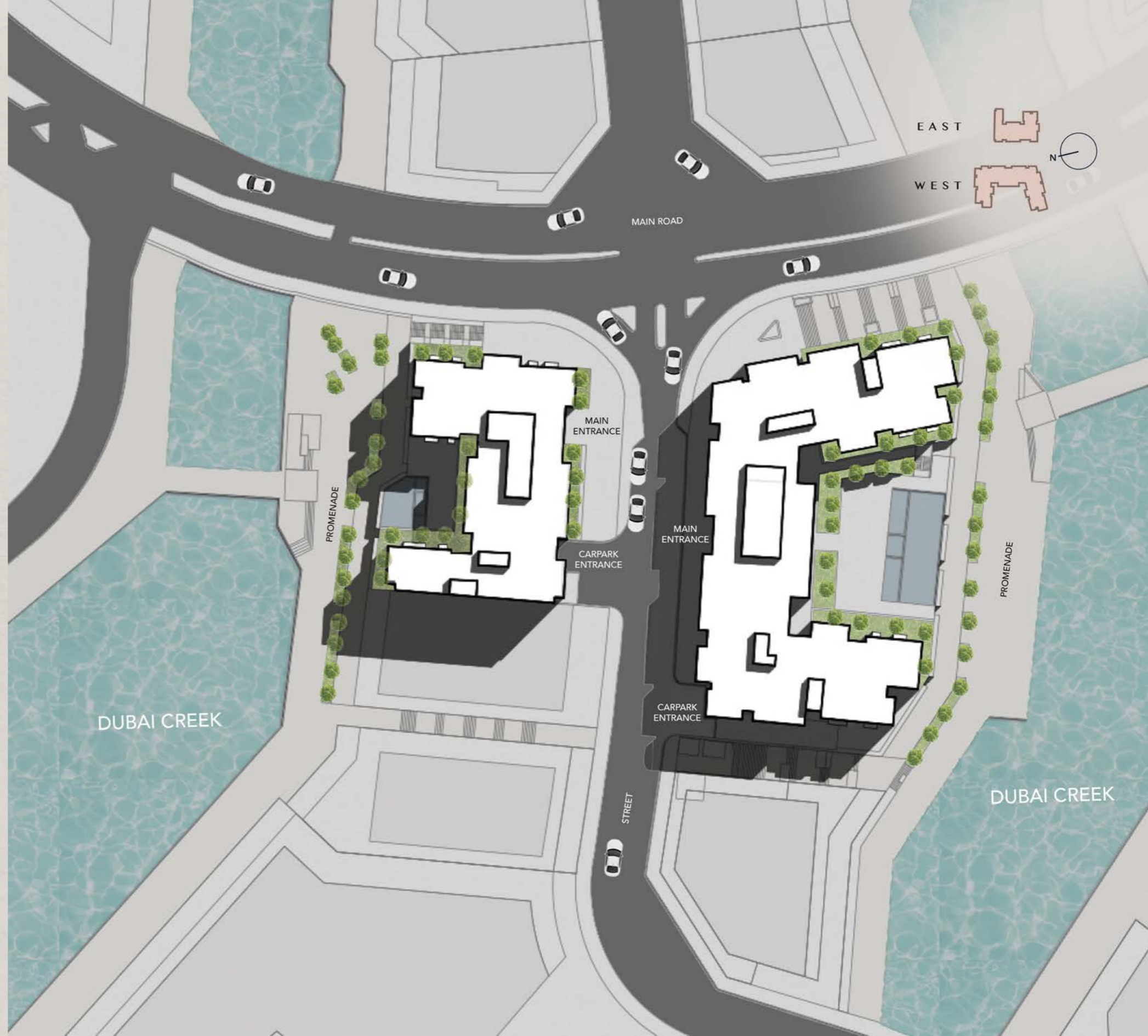
Unique experience



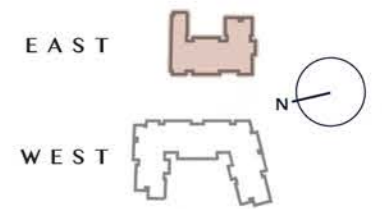
Retail experience



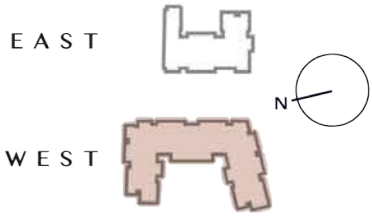
Entertainment



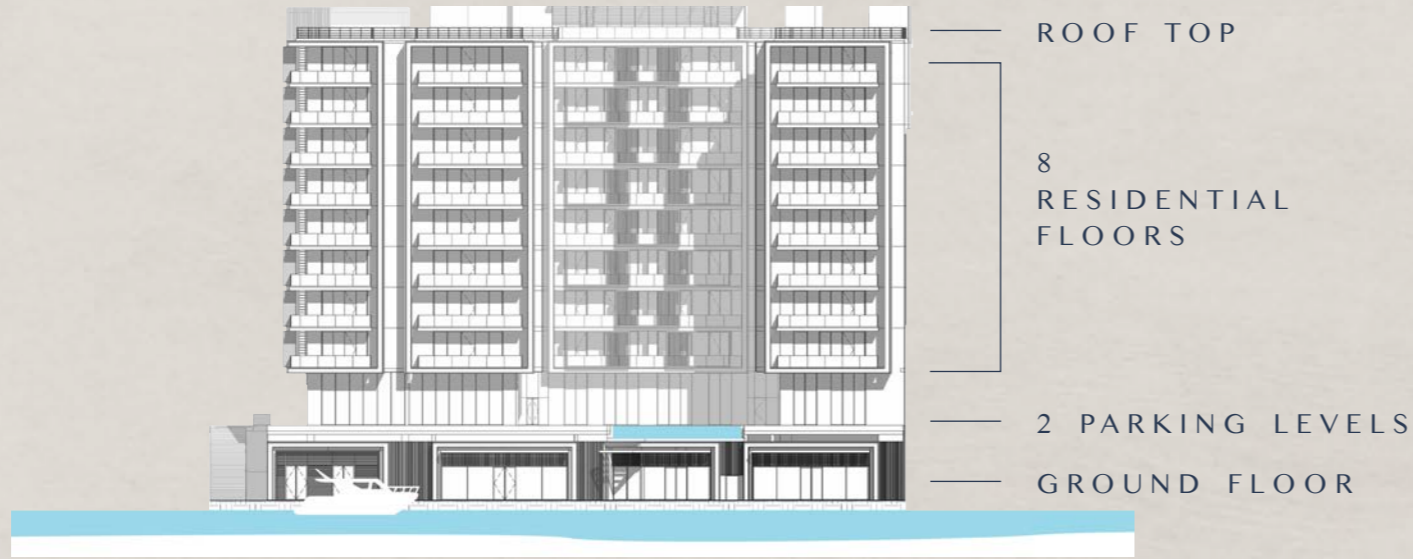
ARCHITECTURAL DESIGN SECTIONS



ARCHITECTURAL DESIGN SECTIONS



ART BAY
EAST



ELEVATORS

East Tower

1 passenger elevator

1 service elevator

West Tower

2 passenger elevators

2 service elevators

ANTICIPATED COMPLETION DATE

Q3 2026

ANTICIPATED SERVICE CHARGE

AED 18 per sq.ft.

ART BAY
WEST



PARKING

Studio, 1 and 2 beds: 1 parking space

3 beds: 2 parking spaces

OWNERSHIP

Freehold



SIZE RANGE PER UNIT TYPE

EAST TOWER

Studio	From 430 sq. ft
1 Bedroom	From 862 sq. ft to 959 sq. ft
2 Bedrooms	From 1,211 sq. ft to 1,692 sq. ft
3 Bedrooms	From 2,135 sq. ft to 2,147 sq. ft

WEST TOWER

Studio	From 485 sq. ft
1 Bedroom	From 847 sq. ft to 1,010 sq. ft
2 Bedrooms	From 1,216 sq. ft to 2,426 sq. ft
3 Bedrooms	From 1,798 sq. ft to 2,459 sq. ft

NUMBER OF UNITS PER TYPE

EAST TOWER

Studio	8 units
1 Bedroom	50 units
2 Bedrooms	32 units
3 Bedrooms	9 units

WEST TOWER

Studio	8 units
1 Bedroom	34 units
2 Bedrooms	90 units
3 Bedrooms	35 units



GROUND &
FIRST FLOOR
AMENITIES



RETAIL



DUBAI CULTURE VILLAGE PROMENADE

Actual View

EAST
GROUND FLOOR
AMENITIES PLAN

- ① ACCESS TO PARKING LEVELS
- ② EV CHARGING STATION
- ③ PARKING FOR PEOPLE OF DETERMINATION
- ④ BICYCLE PARKING
- ⑤ LIFT LOBBY
- ⑥ ACCESS TO PROMENADE



EAST
FIRST FLOOR
AMENITIES PLAN

- ① ACCESS TO PARKING LEVELS
- ② ACCESS TO GROUND FLOOR PARKING
- ③ EV CHARGING STATION
- ④ PARKING FOR PEOPLE OF DETERMINATION
- ⑤ BICYCLE PARKING
- ⑥ LIFT LOBBY



WEST
GROUND FLOOR
AMENITIES PLAN

- ① ACCESS TO PARKING LEVELS
- ② EV CHARGING STATION
- ③ PARKING FOR PEOPLE OF DETERMINATION
- ④ BICYCLE PARKING
- ⑤ LIFT LOBBY
- ⑥ ACCESS TO PROMENADE



**WEST
FIRST FLOOR
AMENITIES PLAN**

- ① ACCESS TO PARKING LEVELS
- ② ACCESS TO GROUND FLOOR PARKING
- ③ EV CHARGING STATION
- ④ PARKING FOR PEOPLE OF DETERMINATION
- ⑤ BICYCLE PARKING
- ⑥ LIFT LOBBY
- ⑦ ACCESS TO PROMENADE





SECOND FLOOR
AMENITIES



LOBBY
ENTRANCE

LOBBY
RECEPTION



ELLINGTON



LOBBY
LIBRARY



LIFT
LOBBY





CLUB
LOUNGE



THE
THEATRE



FITNESS
STUDIO

HOT YOGA
STUDIO



CHANGE
ROOM





ELLINGTON VILLAS WORK STATION PLAY AREA
← ↓ →

YOUTH
HUB



POOL
DECK



THE
COURTYARD

**EAST
SECOND FLOOR
AMENITIES PLAN**

- | | |
|--|----------------------------|
| ① LEISURE AND LOUNGE POOL | ⑫ FEMALE WELLNESS CORNER |
| ② BAJA SHELF | ⑬ MALE WELLNESS CORNER |
| ③ SUN LOUNGERS AREA | ⑭ YOUTH HUB |
| ④ KIDS POOL | ⑮ LIFT LOBBY |
| ⑤ BARBEQUE DECK | ⑯ LOBBY LOUNGE |
| ⑥ CULTURE LOUNGE | ⑰ LOBBY RECEPTION |
| ⑦ PANTRY/DINING | ⑱ LOBBY ENTRANCE |
| ⑧ THE THEATRE | ⑲ MAIN ENTRANCE |
| ⑨ FITNESS STUDIO | ⑳ MOVE-IN TRUCK ZONE |
| ⑩ HOT YOGA STUDIO | ㉑ VEHICLE ENTRANCE/EXIT |
| ⑪ BATHROOM FOR PEOPLE OF DETERMINATION | ㉒ ACCESS TO PARKING LEVELS |



**WEST
SECOND FLOOR
AMENITIES PLAN**

- | | | | |
|---------------------------------------|-------------------|-------------------|-------------------|
| ① LEISURE AND LOUNGE POOL | ②③④⑤⑥⑦⑧⑨⑩⑪⑫⑬⑭⑮⑯⑰⑱ | ②③④⑤⑥⑦⑧⑨⑩⑪⑫⑬⑭⑮⑯⑰⑱ | ②③④⑤⑥⑦⑧⑨⑩⑪⑫⑬⑭⑮⑯⑰⑱ |
| ② BAJA SHELF | ②③④⑤⑥⑦⑧⑨⑩⑪⑫⑬⑭⑮⑯⑰⑱ | ②③④⑤⑥⑦⑧⑨⑩⑪⑫⑬⑭⑮⑯⑰⑱ | ②③④⑤⑥⑦⑧⑨⑩⑪⑫⑬⑭⑮⑯⑰⑱ |
| ③ SUN LOUNGERS AREA | ②③④⑤⑥⑦⑧⑨⑩⑪⑫⑬⑭⑮⑯⑰⑱ | ②③④⑤⑥⑦⑧⑨⑩⑪⑫⑬⑭⑮⑯⑰⑱ | ②③④⑤⑥⑦⑧⑨⑩⑪⑫⑬⑭⑮⑯⑰⑱ |
| ④ CABANAS | ②③④⑤⑥⑦⑧⑨⑩⑪⑫⑬⑭⑮⑯⑰⑱ | ②③④⑤⑥⑦⑧⑨⑩⑪⑫⑬⑭⑮⑯⑰⑱ | ②③④⑤⑥⑦⑧⑨⑩⑪⑫⑬⑭⑮⑯⑰⑱ |
| ⑤ OUTDOOR SHOWER | ②③④⑤⑥⑦⑧⑨⑩⑪⑫⑬⑭⑮⑯⑰⑱ | ②③④⑤⑥⑦⑧⑨⑩⑪⑫⑬⑭⑮⑯⑰⑱ | ②③④⑤⑥⑦⑧⑨⑩⑪⑫⑬⑭⑮⑯⑰⑱ |
| ⑥ COURTYARD | ②③④⑤⑥⑦⑧⑨⑩⑪⑫⑬⑭⑮⑯⑰⑱ | ②③④⑤⑥⑦⑧⑨⑩⑪⑫⑬⑭⑮⑯⑰⑱ | ②③④⑤⑥⑦⑧⑨⑩⑪⑫⑬⑭⑮⑯⑰⑱ |
| ⑦ KIDS POOL | ②③④⑤⑥⑦⑧⑨⑩⑪⑫⑬⑭⑮⑯⑰⑱ | ②③④⑤⑥⑦⑧⑨⑩⑪⑫⑬⑭⑮⑯⑰⑱ | ②③④⑤⑥⑦⑧⑨⑩⑪⑫⑬⑭⑮⑯⑰⑱ |
| ⑧ BARBEQUE DECK | ②③④⑤⑥⑦⑧⑨⑩⑪⑫⑬⑭⑮⑯⑰⑱ | ②③④⑤⑥⑦⑧⑨⑩⑪⑫⑬⑭⑮⑯⑰⑱ | ②③④⑤⑥⑦⑧⑨⑩⑪⑫⑬⑭⑮⑯⑰⑱ |
| ⑨ OUTDOOR KIDS PLAY AREA | ②③④⑤⑥⑦⑧⑨⑩⑪⑫⑬⑭⑮⑯⑰⑱ | ②③④⑤⑥⑦⑧⑨⑩⑪⑫⑬⑭⑮⑯⑰⑱ | ②③④⑤⑥⑦⑧⑨⑩⑪⑫⑬⑭⑮⑯⑰⑱ |
| ⑩ OUTDOOR TERRACE | ②③④⑤⑥⑦⑧⑨⑩⑪⑫⑬⑭⑮⑯⑰⑱ | ②③④⑤⑥⑦⑧⑨⑩⑪⑫⑬⑭⑮⑯⑰⑱ | ②③④⑤⑥⑦⑧⑨⑩⑪⑫⑬⑭⑮⑯⑰⑱ |
| ⑪ ACCESS TO COURTYARD | ②③④⑤⑥⑦⑧⑨⑩⑪⑫⑬⑭⑮⑯⑰⑱ | ②③④⑤⑥⑦⑧⑨⑩⑪⑫⑬⑭⑮⑯⑰⑱ | ②③④⑤⑥⑦⑧⑨⑩⑪⑫⑬⑭⑮⑯⑰⑱ |
| ⑫ LIFT LOBBY | ②③④⑤⑥⑦⑧⑨⑩⑪⑫⑬⑭⑮⑯⑰⑱ | ②③④⑤⑥⑦⑧⑨⑩⑪⑫⑬⑭⑮⑯⑰⑱ | ②③④⑤⑥⑦⑧⑨⑩⑪⑫⑬⑭⑮⑯⑰⑱ |
| ⑬ CULTURE LOUNGE | ②③④⑤⑥⑦⑧⑨⑩⑪⑫⑬⑭⑮⑯⑰⑱ | ②③④⑤⑥⑦⑧⑨⑩⑪⑫⑬⑭⑮⑯⑰⑱ | ②③④⑤⑥⑦⑧⑨⑩⑪⑫⑬⑭⑮⑯⑰⑱ |
| ⑭ THE THEATRE | ②③④⑤⑥⑦⑧⑨⑩⑪⑫⑬⑭⑮⑯⑰⑱ | ②③④⑤⑥⑦⑧⑨⑩⑪⑫⑬⑭⑮⑯⑰⑱ | ②③④⑤⑥⑦⑧⑨⑩⑪⑫⑬⑭⑮⑯⑰⑱ |
| ⑮ GAMES CORNER | ②③④⑤⑥⑦⑧⑨⑩⑪⑫⑬⑭⑮⑯⑰⑱ | ②③④⑤⑥⑦⑧⑨⑩⑪⑫⑬⑭⑮⑯⑰⑱ | ②③④⑤⑥⑦⑧⑨⑩⑪⑫⑬⑭⑮⑯⑰⑱ |
| ⑯ YOUTH HUB | ②③④⑤⑥⑦⑧⑨⑩⑪⑫⑬⑭⑮⑯⑰⑱ | ②③④⑤⑥⑦⑧⑨⑩⑪⑫⑬⑭⑮⑯⑰⑱ | ②③④⑤⑥⑦⑧⑨⑩⑪⑫⑬⑭⑮⑯⑰⑱ |
| ⑰ MULTIPURPOSE TABLE | ②③④⑤⑥⑦⑧⑨⑩⑪⑫⑬⑭⑮⑯⑰⑱ | ②③④⑤⑥⑦⑧⑨⑩⑪⑫⑬⑭⑮⑯⑰⑱ | ②③④⑤⑥⑦⑧⑨⑩⑪⑫⑬⑭⑮⑯⑰⑱ |
| ⑱ LOBBY LOUNGE | ②③④⑤⑥⑦⑧⑨⑩⑪⑫⑬⑭⑮⑯⑰⑱ | ②③④⑤⑥⑦⑧⑨⑩⑪⑫⑬⑭⑮⑯⑰⑱ | ②③④⑤⑥⑦⑧⑨⑩⑪⑫⑬⑭⑮⑯⑰⑱ |
| ⑲ LOBBY RECEPTION | ②③④⑤⑥⑦⑧⑨⑩⑪⑫⑬⑭⑮⑯⑰⑱ | ②③④⑤⑥⑦⑧⑨⑩⑪⑫⑬⑭⑮⑯⑰⑱ | ②③④⑤⑥⑦⑧⑨⑩⑪⑫⑬⑭⑮⑯⑰⑱ |
| ⑳ LOBBY ENTRANCE | ②③④⑤⑥⑦⑧⑨⑩⑪⑫⑬⑭⑮⑯⑰⑱ | ②③④⑤⑥⑦⑧⑨⑩⑪⑫⑬⑭⑮⑯⑰⑱ | ②③④⑤⑥⑦⑧⑨⑩⑪⑫⑬⑭⑮⑯⑰⑱ |
| ㉑ MAIN ENTRANCE | ②③④⑤⑥⑦⑧⑨⑩⑪⑫⑬⑭⑮⑯⑰⑱ | ②③④⑤⑥⑦⑧⑨⑩⑪⑫⑬⑭⑮⑯⑰⑱ | ②③④⑤⑥⑦⑧⑨⑩⑪⑫⑬⑭⑮⑯⑰⑱ |
| ㉒ FITNESS STUDIO | ②③④⑤⑥⑦⑧⑨⑩⑪⑫⑬⑭⑮⑯⑰⑱ | ②③④⑤⑥⑦⑧⑨⑩⑪⑫⑬⑭⑮⑯⑰⑱ | ②③④⑤⑥⑦⑧⑨⑩⑪⑫⑬⑭⑮⑯⑰⑱ |
| ㉓ HOT YOGA STUDIO | ②③④⑤⑥⑦⑧⑨⑩⑪⑫⑬⑭⑮⑯⑰⑱ | ②③④⑤⑥⑦⑧⑨⑩⑪⑫⑬⑭⑮⑯⑰⑱ | ②③④⑤⑥⑦⑧⑨⑩⑪⑫⑬⑭⑮⑯⑰⑱ |
| ㉔ OUTDOOR FITNESS AREA | ②③④⑤⑥⑦⑧⑨⑩⑪⑫⑬⑭⑮⑯⑰⑱ | ②③④⑤⑥⑦⑧⑨⑩⑪⑫⑬⑭⑮⑯⑰⑱ | ②③④⑤⑥⑦⑧⑨⑩⑪⑫⑬⑭⑮⑯⑰⑱ |
| ㉕ MALE WELLNESS CORNER | ②③④⑤⑥⑦⑧⑨⑩⑪⑫⑬⑭⑮⑯⑰⑱ | ②③④⑤⑥⑦⑧⑨⑩⑪⑫⑬⑭⑮⑯⑰⑱ | ②③④⑤⑥⑦⑧⑨⑩⑪⑫⑬⑭⑮⑯⑰⑱ |
| ㉖ FEMALE WELLNESS CORNER | ②③④⑤⑥⑦⑧⑨⑩⑪⑫⑬⑭⑮⑯⑰⑱ | ②③④⑤⑥⑦⑧⑨⑩⑪⑫⑬⑭⑮⑯⑰⑱ | ②③④⑤⑥⑦⑧⑨⑩⑪⑫⑬⑭⑮⑯⑰⑱ |
| ㉗ PARKING FOR PEOPLE OF DETERMINATION | ②③④⑤⑥⑦⑧⑨⑩⑪⑫⑬⑭⑮⑯⑰⑱ | ②③④⑤⑥⑦⑧⑨⑩⑪⑫⑬⑭⑮⑯⑰⑱ | ②③④⑤⑥⑦⑧⑨⑩⑪⑫⑬⑭⑮⑯⑰⑱ |
| ㉘ SERVICE LIFT | ②③④⑤⑥⑦⑧⑨⑩⑪⑫⑬⑭⑮⑯⑰⑱ | ②③④⑤⑥⑦⑧⑨⑩⑪⑫⑬⑭⑮⑯⑰⑱ | ②③④⑤⑥⑦⑧⑨⑩⑪⑫⑬⑭⑮⑯⑰⑱ |
| ㉙ MOVE-IN TRUCK ZONE | ②③④⑤⑥⑦⑧⑨⑩⑪⑫⑬⑭⑮⑯⑰⑱ | ②③④⑤⑥⑦⑧⑨⑩⑪⑫⑬⑭⑮⑯⑰⑱ | ②③④⑤⑥⑦⑧⑨⑩⑪⑫⑬⑭⑮⑯⑰⑱ |
| ㉚ VEHICLE ENTRANCE/EXIT | ②③④⑤⑥⑦⑧⑨⑩⑪⑫⑬⑭⑮⑯⑰⑱ | ②③④⑤⑥⑦⑧⑨⑩⑪⑫⑬⑭⑮⑯⑰⑱ | ②③④⑤⑥⑦⑧⑨⑩⑪⑫⑬⑭⑮⑯⑰⑱ |
| ㉛ ACCESS TO PARKING LEVELS | ②③④⑤⑥⑦⑧⑨⑩⑪⑫⑬⑭⑮⑯⑰⑱ | ②③④⑤⑥⑦⑧⑨⑩⑪⑫⑬⑭⑮⑯⑰⑱ | ②③④⑤⑥⑦⑧⑨⑩⑪⑫⑬⑭⑮⑯⑰⑱ |

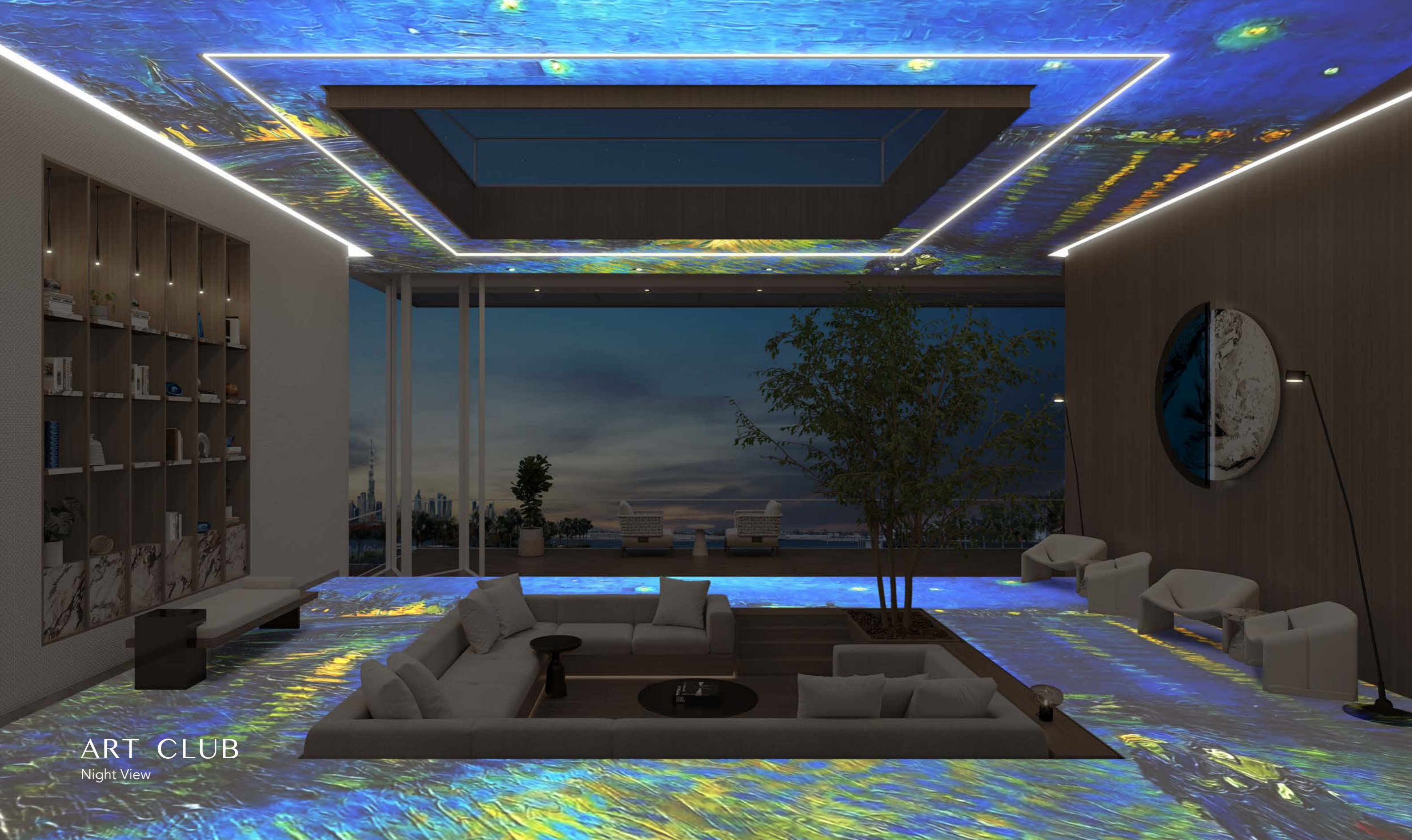




ART CLUB
AMENITIES



ART CLUB
Day View



ART CLUB
Night View

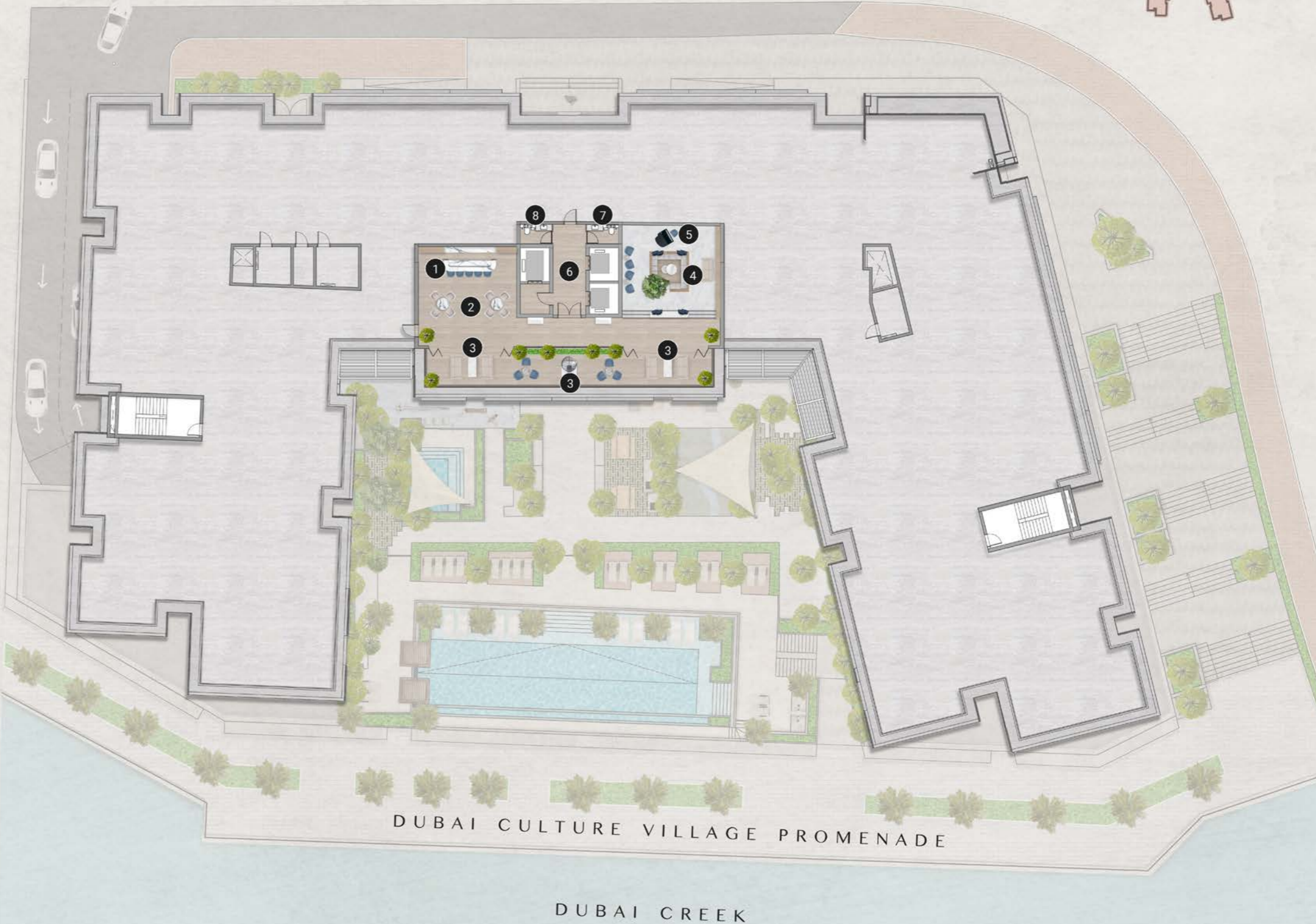
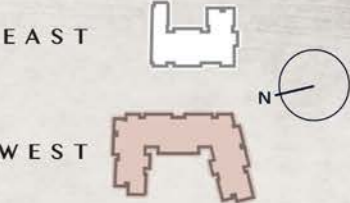
**EAST
ART CLUB
AMENITIES PLAN**

- ① ROOFTOP BAR
- ② WORKSHOP CORNER
- ③ OUTDOOR LOUNGE & VIEWING DECK
- ④ SUNKEN SEATING
- ⑤ ARTS & PERFORMANCES STAGE
- ⑥ LIFT LOBBY
- ⑦ WASHROOM



WEST
ART CLUB
AMENITIES PLAN

- ① ROOFTOP BAR
- ② WORKSHOP CORNER
- ③ OUTDOOR LOUNGE & VIEWING DECK
- ④ SUNKEN SEATING
- ⑤ ARTS & PERFORMANCES STAGE
- ⑥ LIFT LOBBY
- ⑦ WASHROOM



APARTMENTS





LIVING
& DINING



TYPICAL
KITCHEN



3 BEDROOM
KITCHEN





BEDROOMS



GLASS
BOX

Applicable to 2 and 3-bedroom corner units



BATHROOMS

GUEST
WASHROOM



POWDER
ROOM



CONSTRUCTION CONTRACTOR



As well as being the project developer, Dutco's top-tier contracting division will be the main contractors for the construction and delivery of the development. With over 70 years of presence in the UAE, Dutco is renowned for high quality and on-time delivery.

Dutco has been involved in many iconic projects, including the world's largest mall, Dubai Mall, Museum of the Future and Dubai International Airport, in addition to many residential and commercial projects.



ART BAY

EAST
FLOOR PLANS



2ND FLOOR PLAN

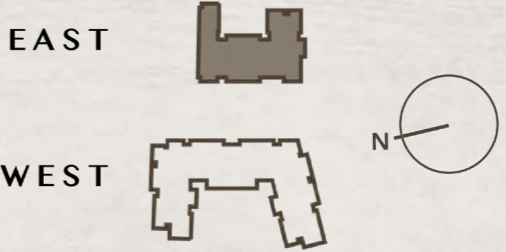
- 1 BEDROOM
- 3 BEDROOM



3RD - 10TH
FLOOR PLAN

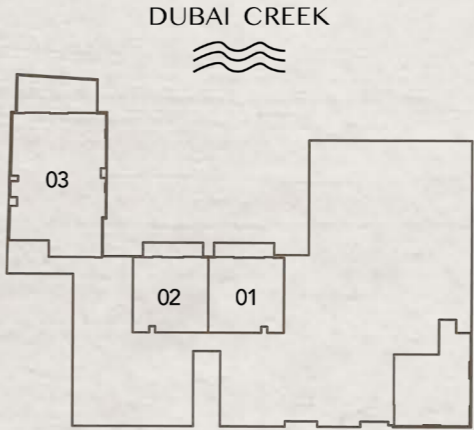
- STUDIO
- 1 BEDROOM
- 2 BEDROOM
- 3 BEDROOM

STUDIO
TYPE A

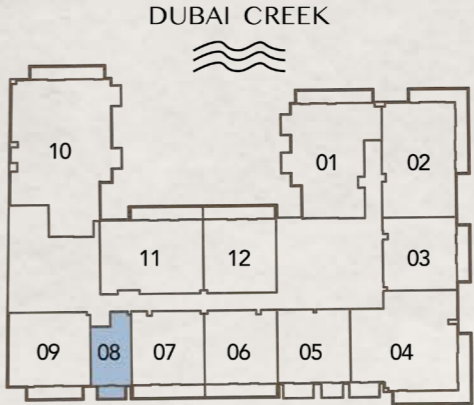


Internal Living Area : 379.54 Sq. Ft
 Outdoor Living Area : 50.48 Sq. Ft
 Total Living Area : 430.02 Sq. Ft

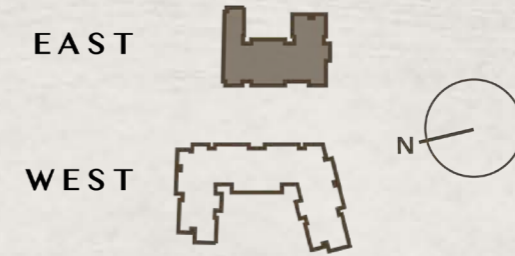
2nd Floor:



3rd - 10th Floor:

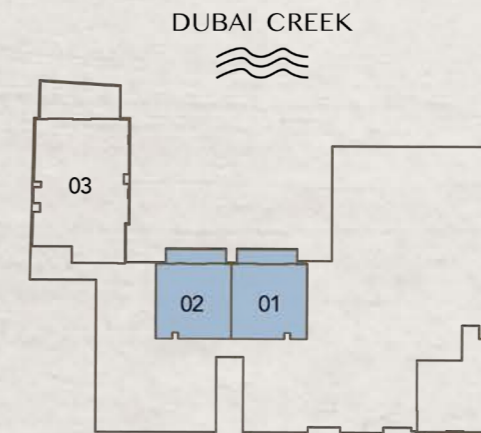


1 BEDROOM TYPE A

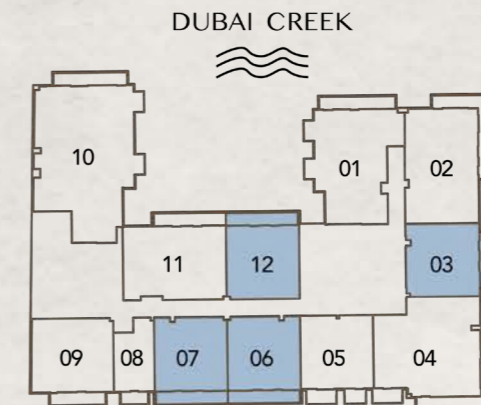


Internal Living Area : 758.64 Sq. Ft
 Outdoor Living Area : 130.67 Sq. Ft
 Total Living Area : 889.31 Sq. Ft

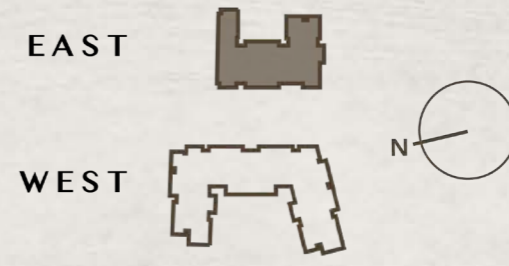
2nd Floor:



3rd - 10th Floor:

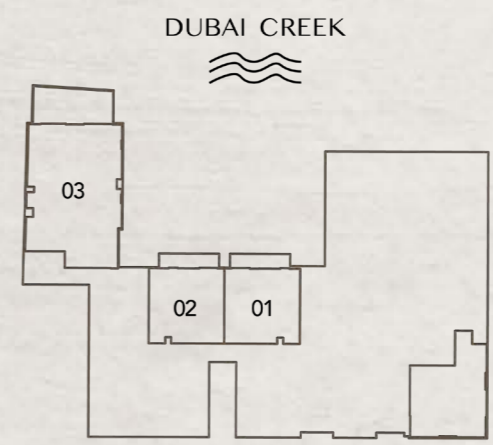


**1 BEDROOM
TYPE B**

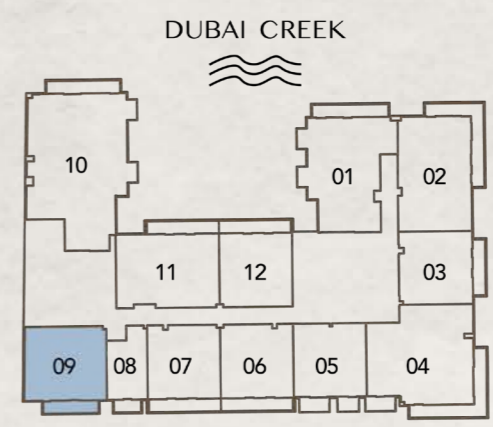


Internal Living Area : 857.24 Sq. Ft
 Outdoor Living Area : 102.58 Sq. Ft
 Total Living Area : 959.82 Sq. Ft

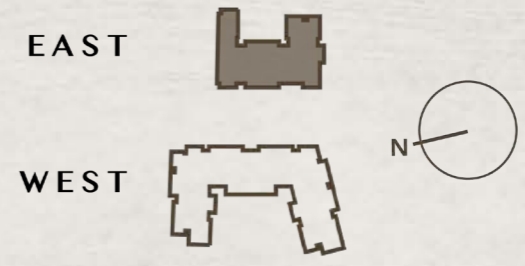
2nd Floor:



3rd - 10th Floor:

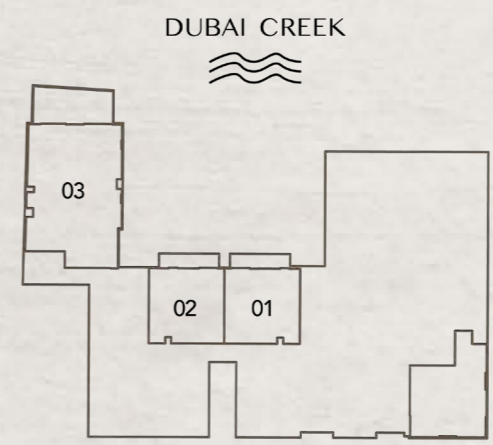


1 BEDROOM
TYPE C

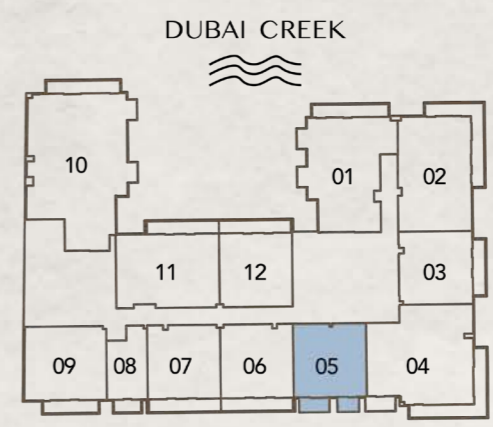


Internal Living Area : 762.73 Sq. Ft
 Outdoor Living Area : 105.81 Sq. Ft
 Total Living Area : 868.54 Sq. Ft

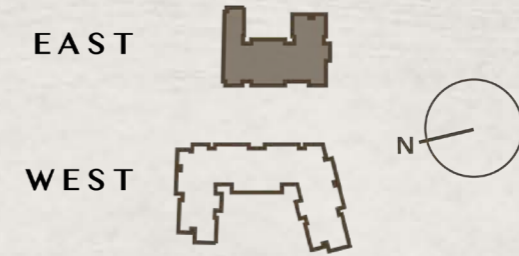
2nd Floor:



3rd - 10th Floor:

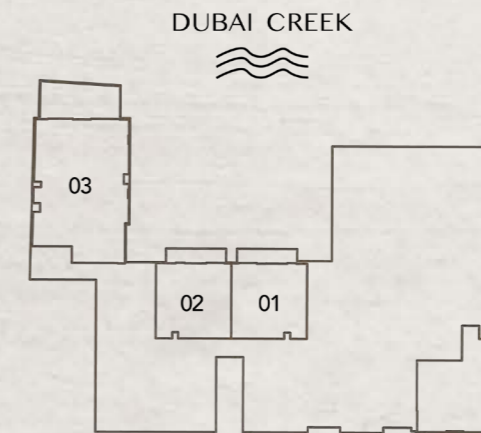


2 BEDROOM
TYPE A

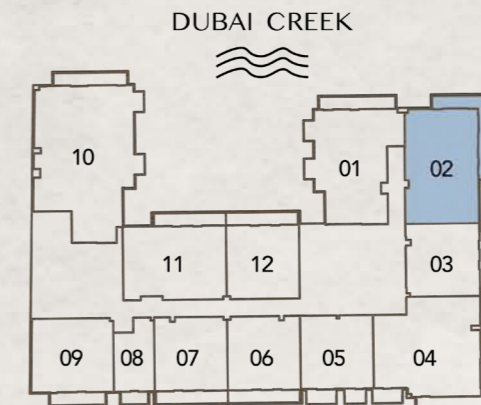


Internal Living Area : 1210.19 Sq. Ft
 Outdoor Living Area : 240.36 Sq. Ft
 Total Living Area : 1450.54 Sq. Ft

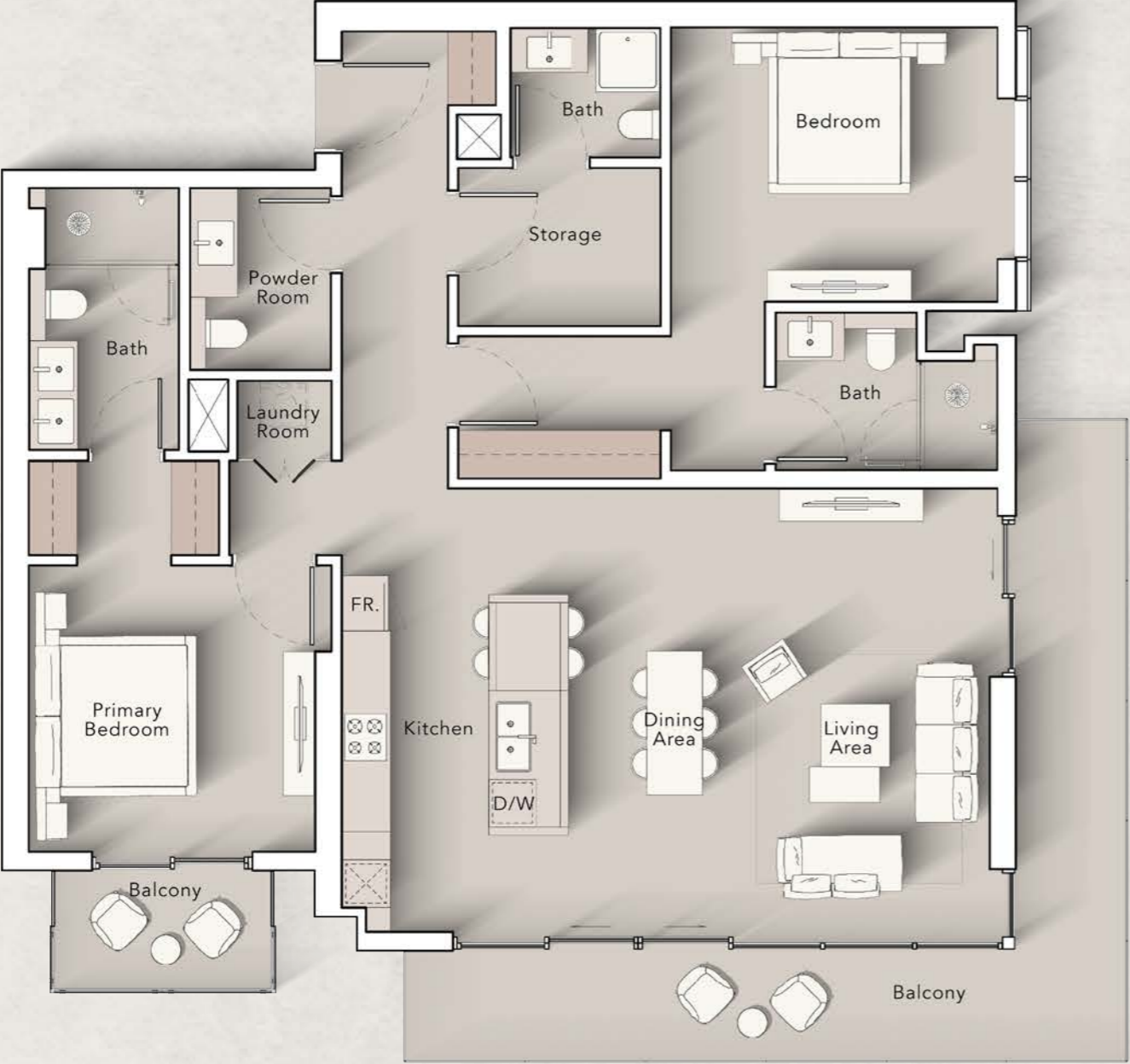
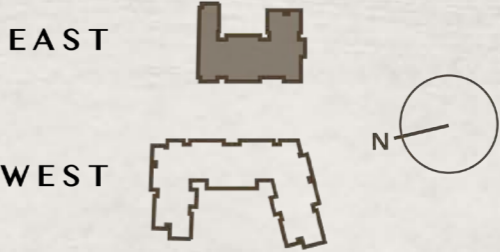
2nd Floor:



3rd - 10th Floor:

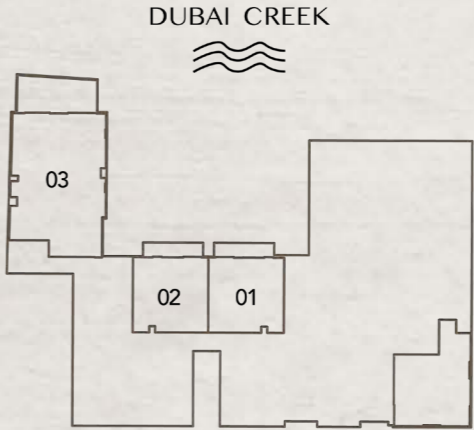


**2 BEDROOM
TYPE B**

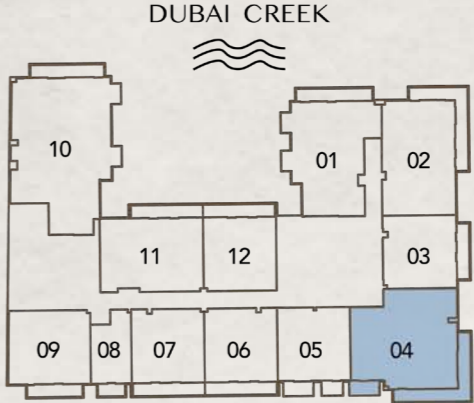


Internal Living Area : 1396.83 Sq. Ft
 Outdoor Living Area : 295.58 Sq. Ft
 Total Living Area : 1692.41 Sq. Ft

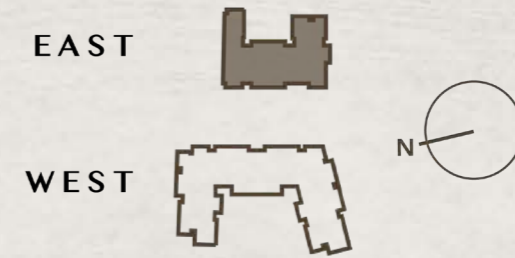
2nd Floor:



3rd - 10th Floor:

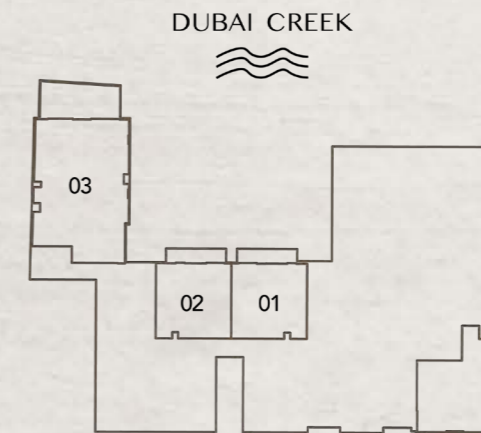


**2 BEDROOM
TYPE C**

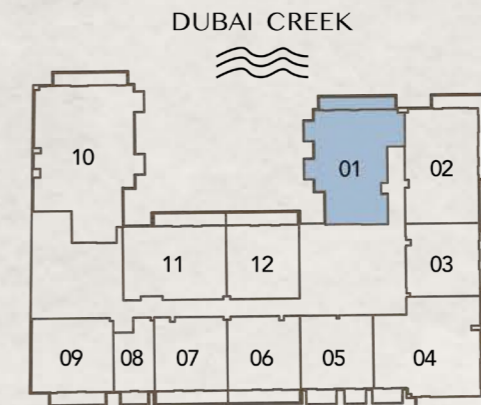


Internal Living Area : 1292.53 Sq. Ft
 Outdoor Living Area : 141.01 Sq. Ft
 Total Living Area : 1433.54 Sq. Ft

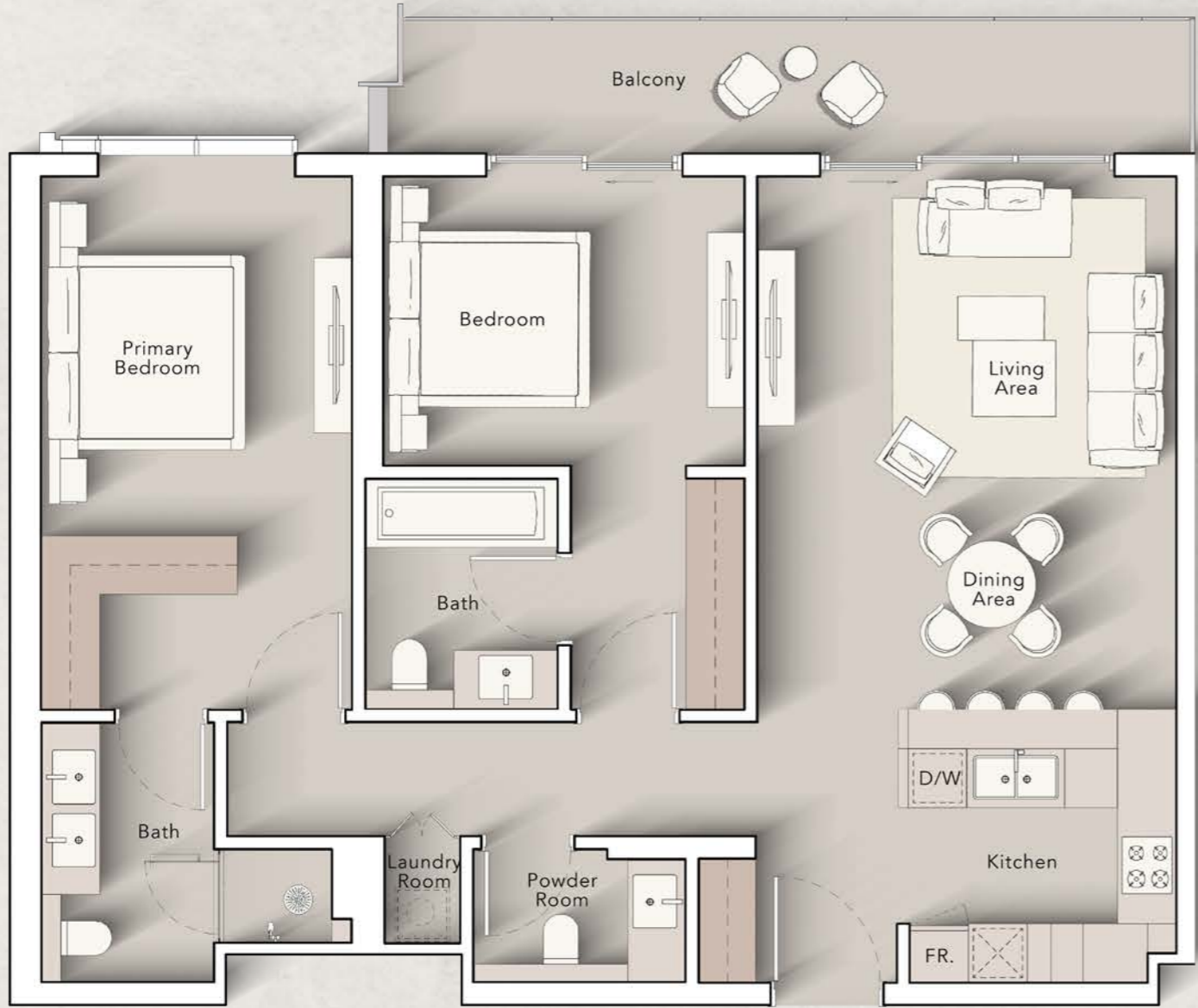
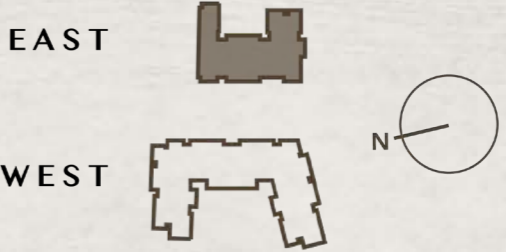
2nd Floor:



3rd - 10th Floor:

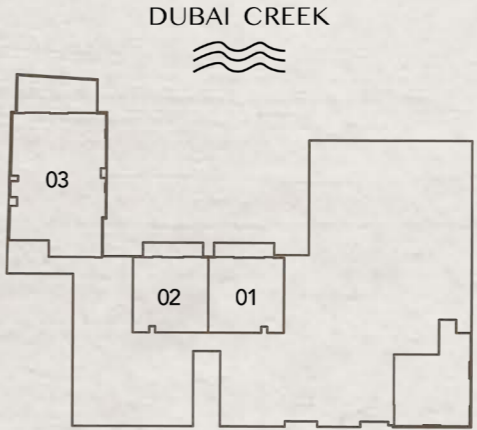


**2 BEDROOM
TYPE D**

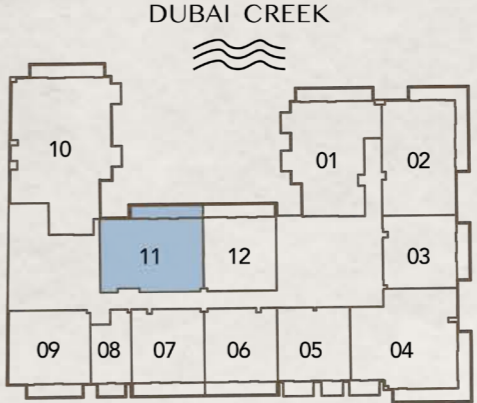


Internal Living Area : 1080.48 Sq. Ft
 Outdoor Living Area : 130.67 Sq. Ft
 Total Living Area : 1211.16 Sq. Ft

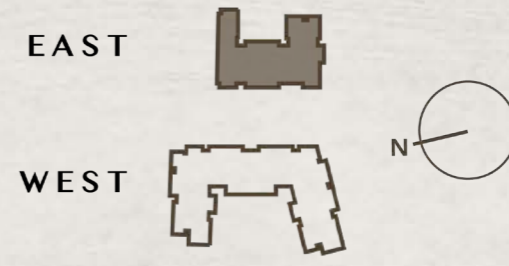
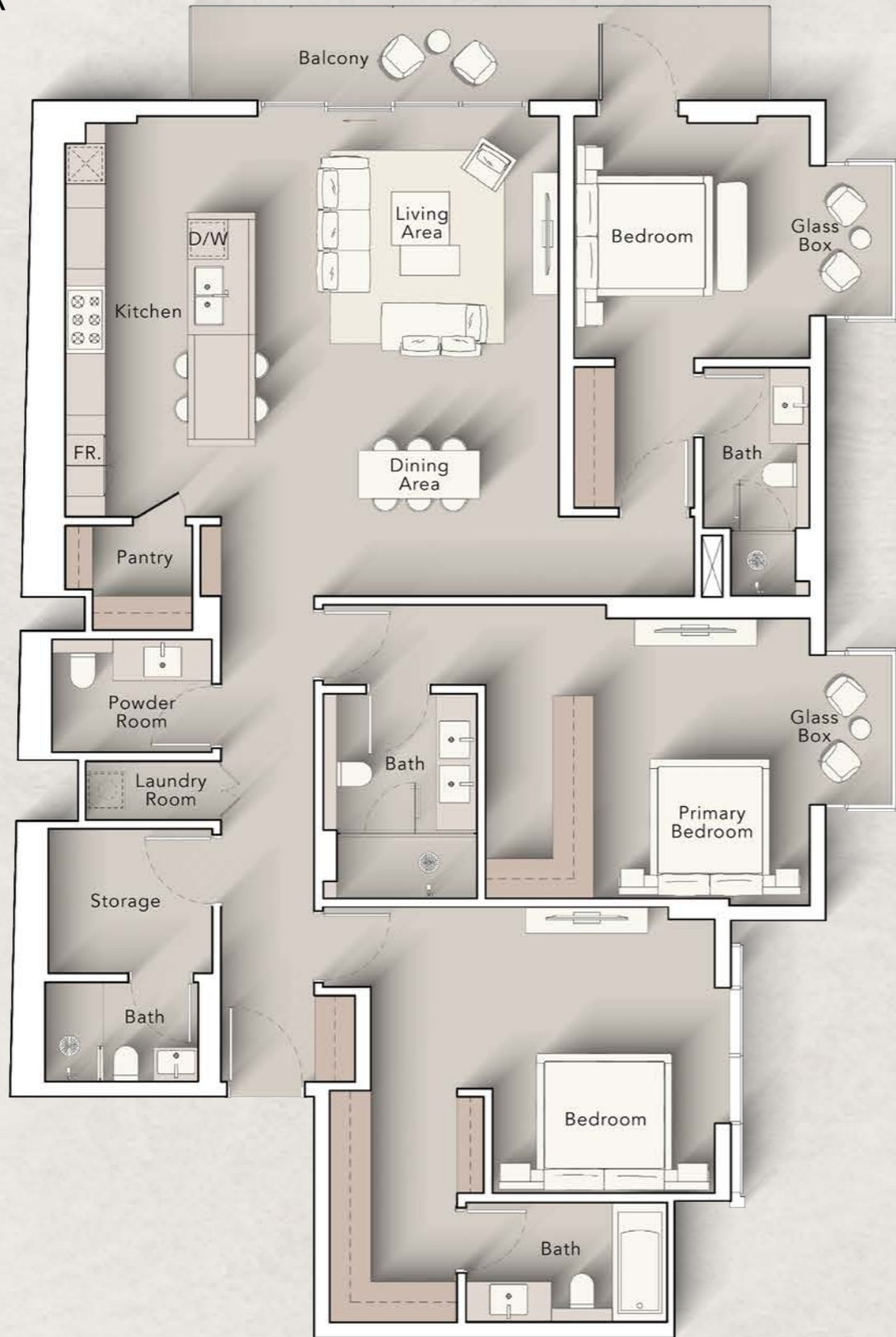
2nd Floor:



3rd - 10th Floor:

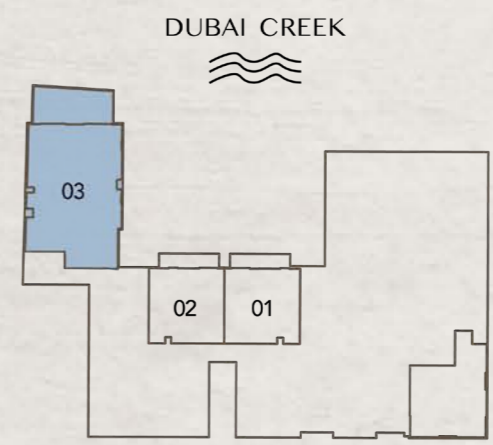


3 BEDROOM TYPE A

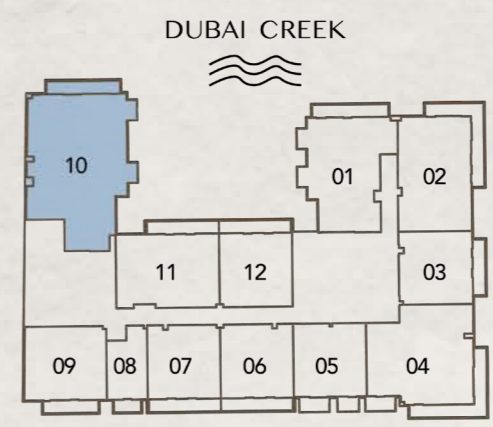


Internal Living Area : 2011.99 Sq. Ft
 Outdoor Living Area : 135.84 Sq. Ft
 Total Living Area : 2147.83 Sq. Ft

2nd Floor:



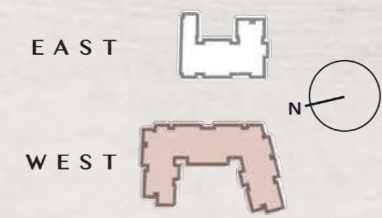
3rd - 10th Floor:




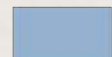


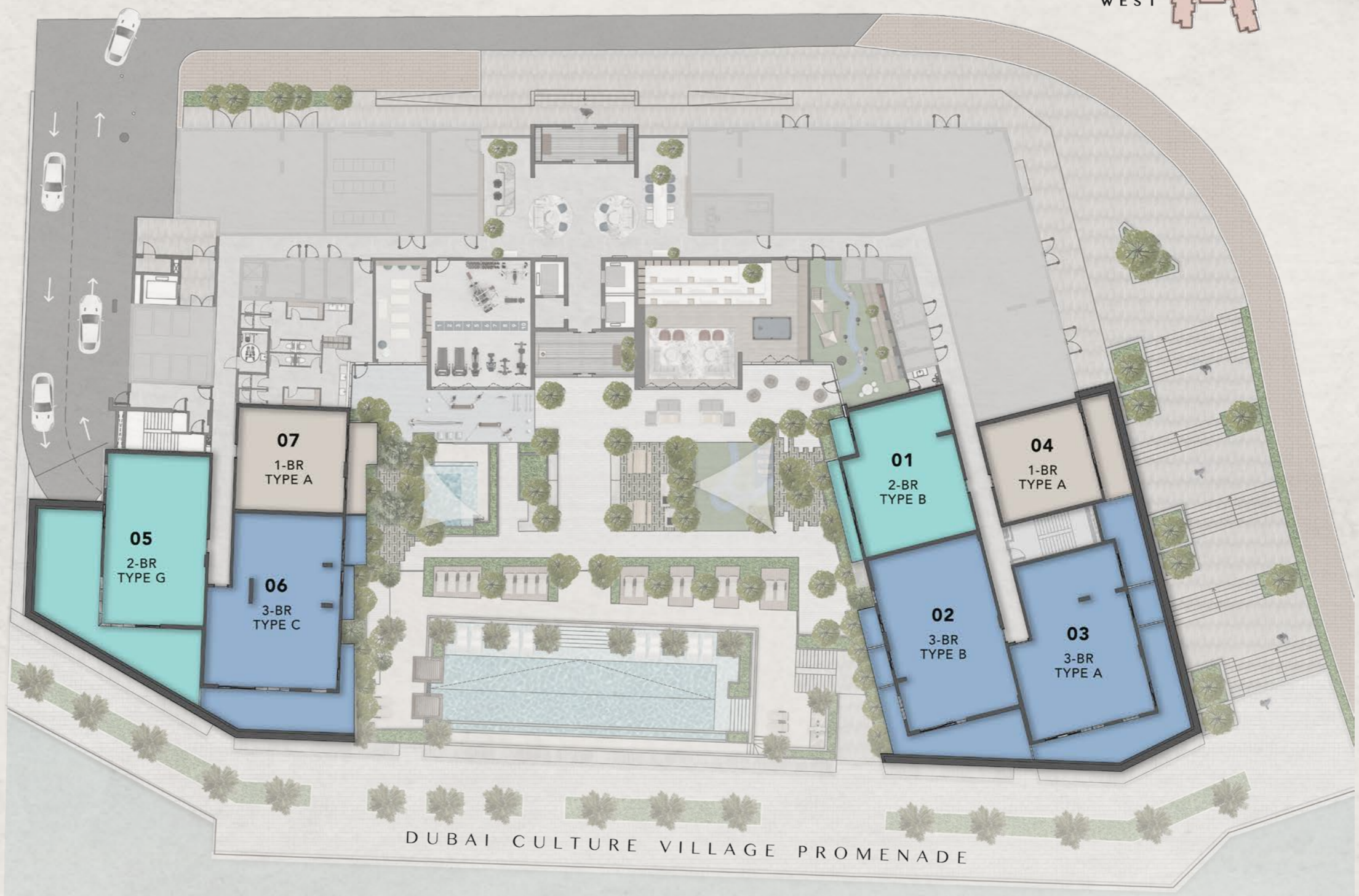
ART BAY

WEST
FLOOR PLANS



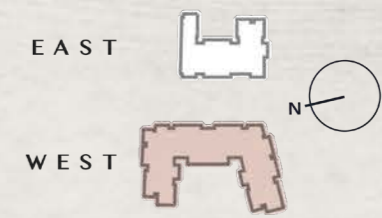
2ND FLOOR PLAN

-  1 BEDROOM
-  2 BEDROOM
-  3 BEDROOM


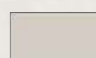



DUBAI CULTURE VILLAGE PROMENADE

DUBAI CREEK



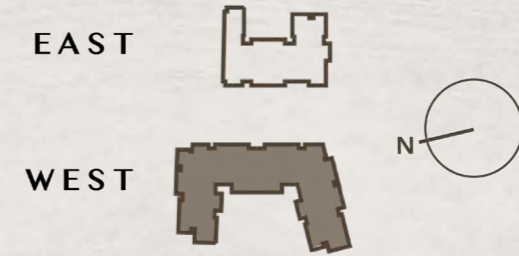
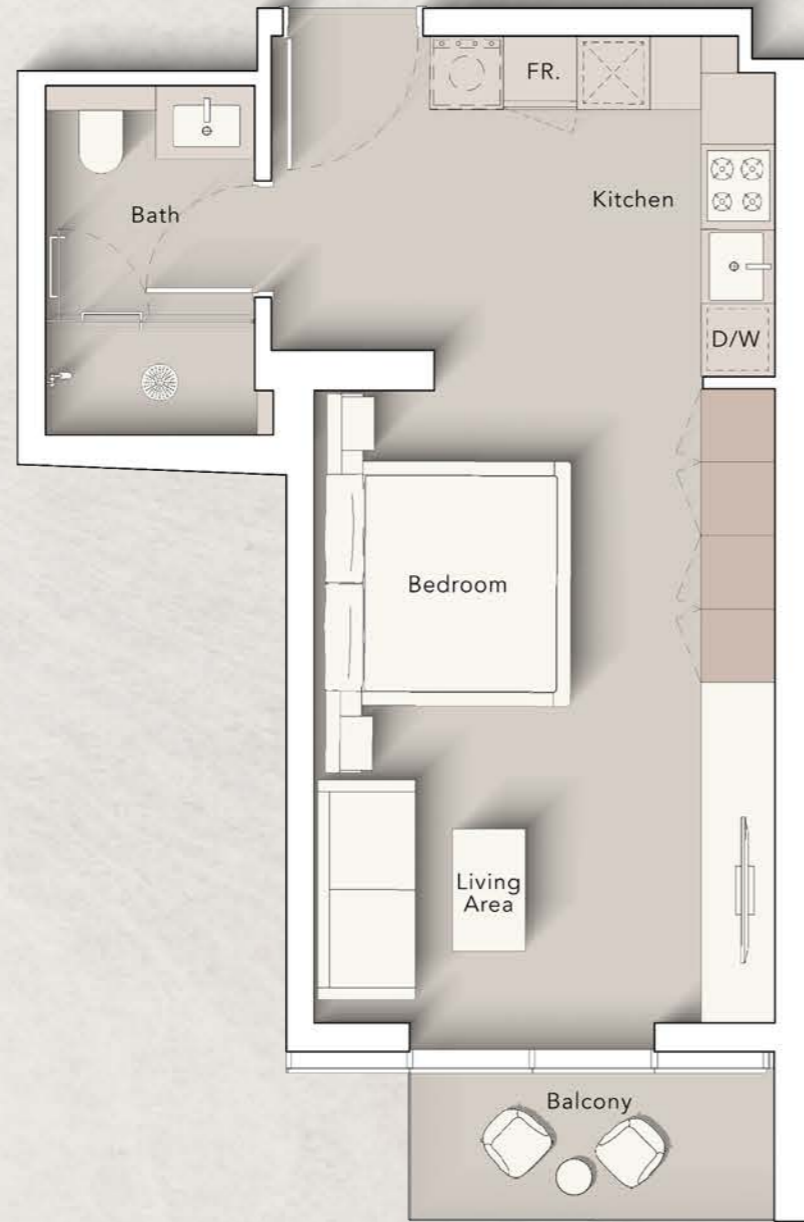
3RD - 10TH
FLOOR PLAN

-  STUDIO
-  1 BEDROOM
-  2 BEDROOM
-  3 BEDROOM

DUBAI CULTURE VILLAGE PROMENADE

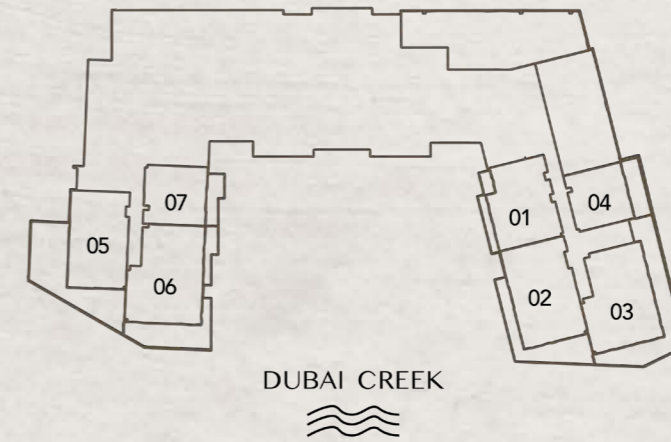
DUBAI CREEK

STUDIO
TYPE A



Internal Living Area : **440.67 Sq. Ft**
 Outdoor Living Area : **44.78 Sq. Ft**
 Total Living Area : **485.45 Sq. Ft**

2nd Floor:



3rd - 10th Floor:

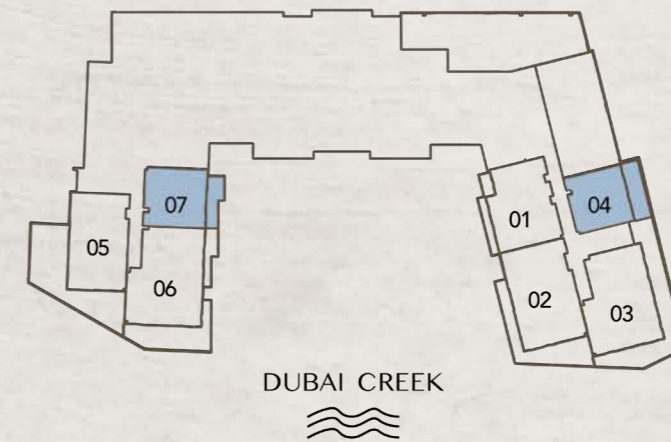


**1 BEDROOM
TYPE A**

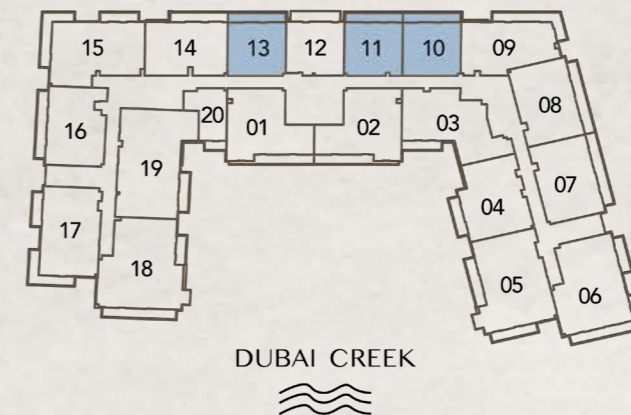


Internal Living Area : 763.27 Sq. Ft
 Outdoor Living Area : 131.32 Sq. Ft
 Total Living Area : 894.59 Sq. Ft

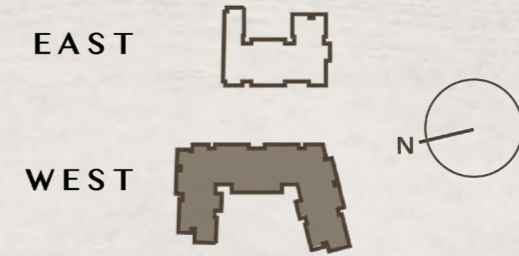
2nd Floor:



3rd - 10th Floor:

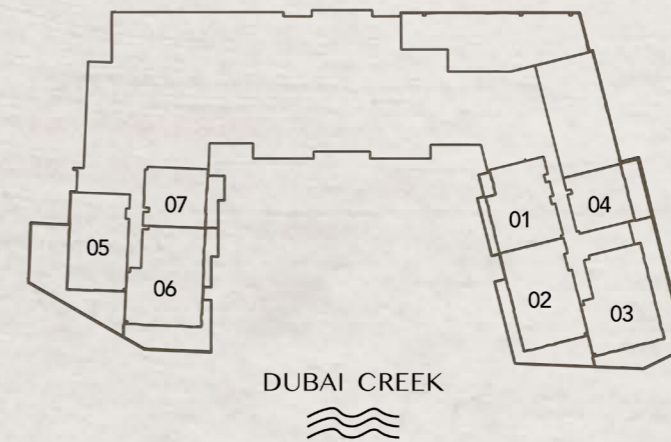


**1 BEDROOM
TYPE B**



Internal Living Area : **753.80 Sq. Ft**
 Outdoor Living Area : **93.54 Sq. Ft**
 Total Living Area : **847.34 Sq. Ft**

2nd Floor:



3rd - 10th Floor:

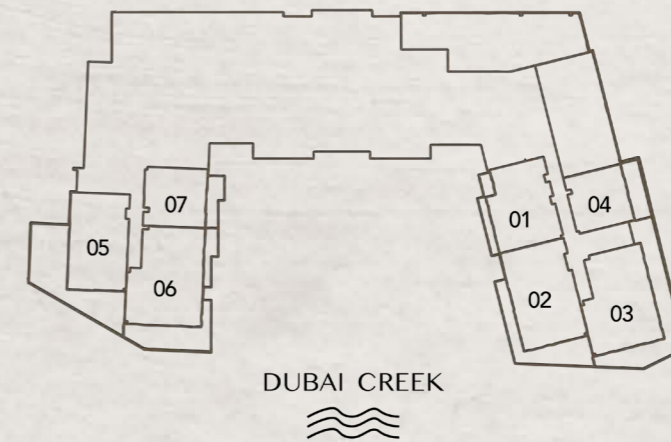


**2 BEDROOM
TYPE A**

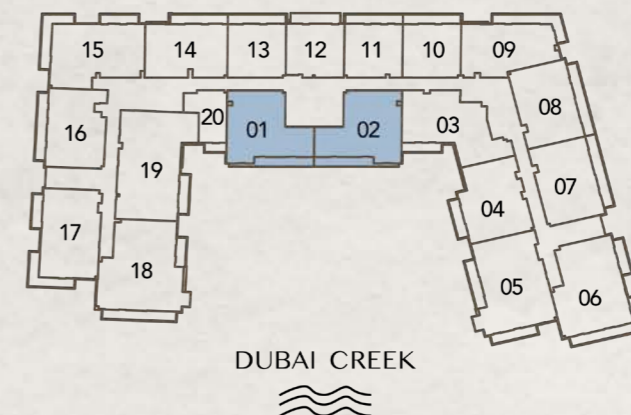


Internal Living Area : 1202.76 Sq. Ft
 Outdoor Living Area : 154.79 Sq. Ft
 Total Living Area : 1357.54 Sq. Ft

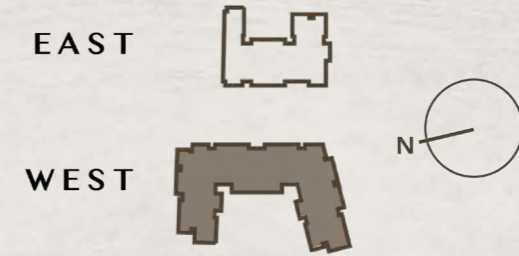
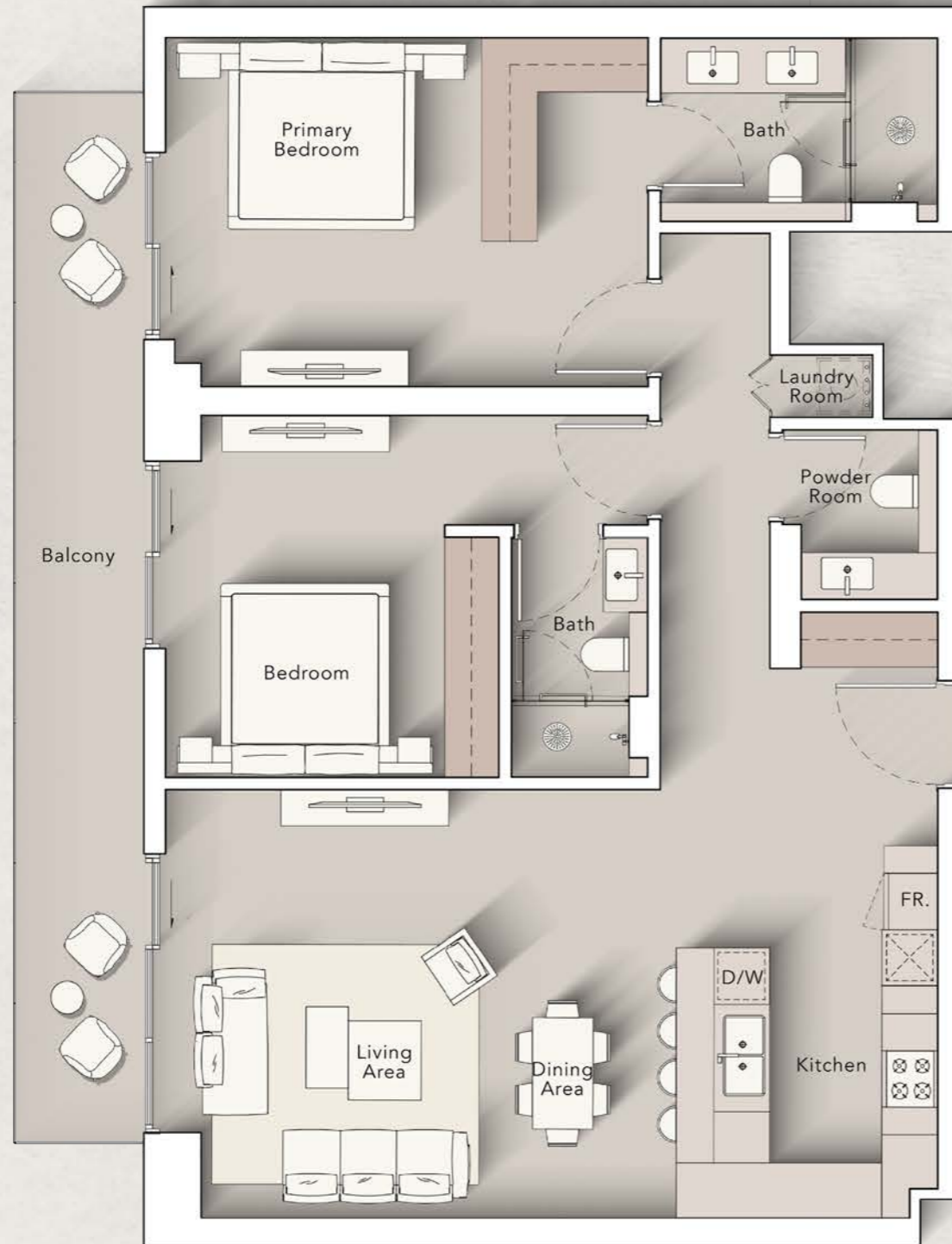
2nd Floor:



3rd - 10th Floor:

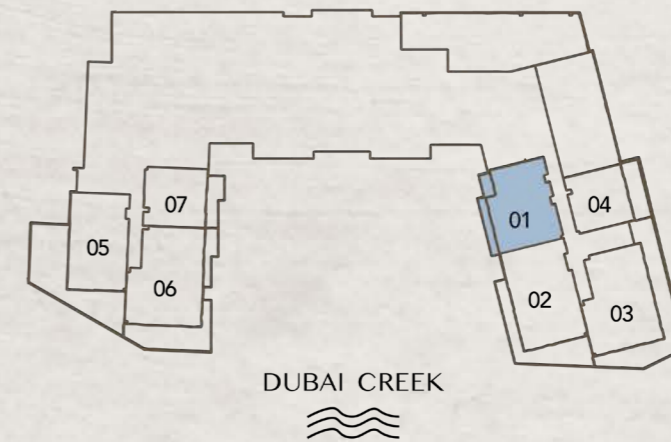


**2 BEDROOM
TYPE B**



Internal Living Area : 1152.71 Sq. Ft
 Outdoor Living Area : 180.08 Sq. Ft
 Total Living Area : 1332.79 Sq. Ft

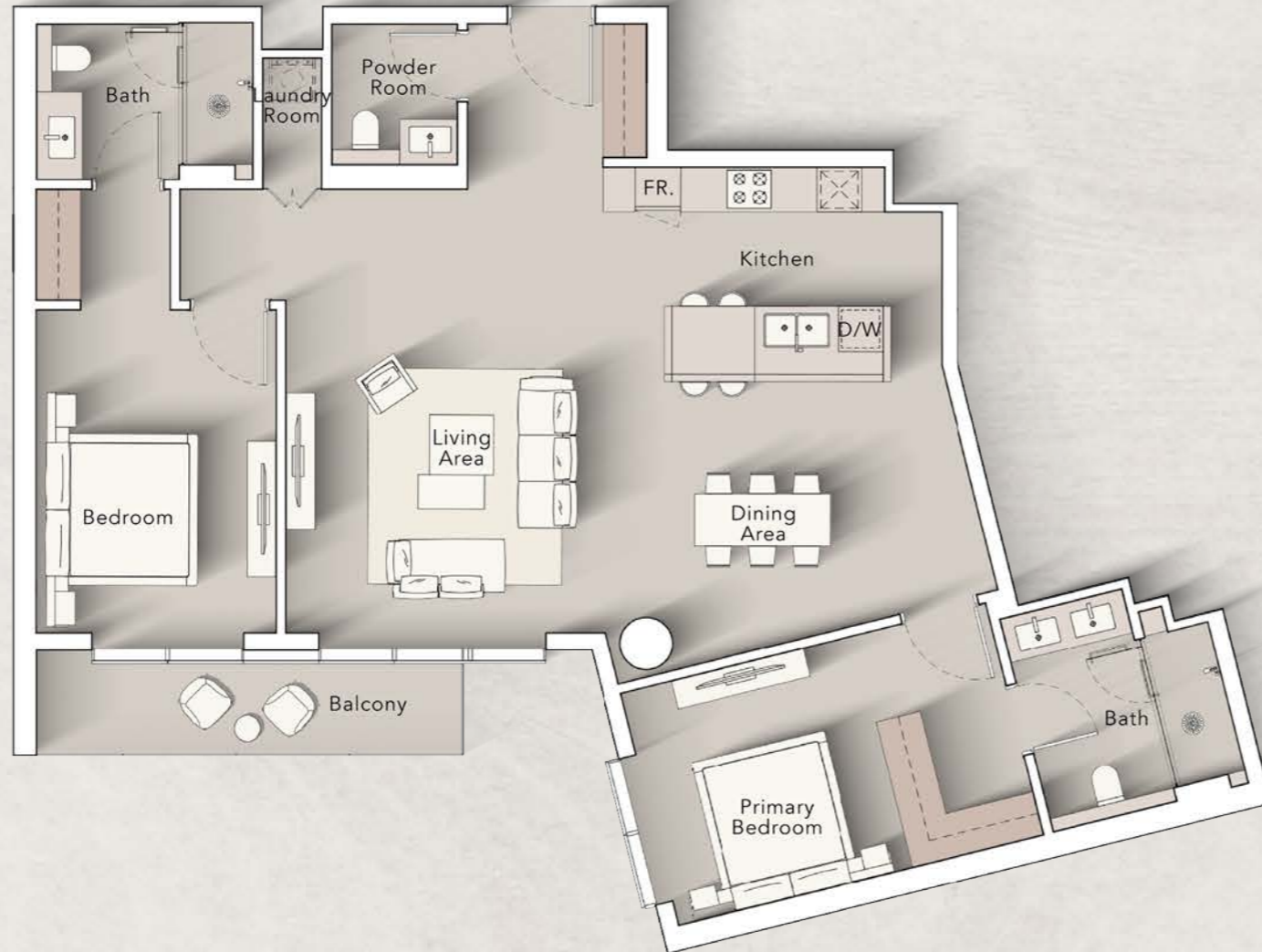
2nd Floor:



3rd - 10th Floor:

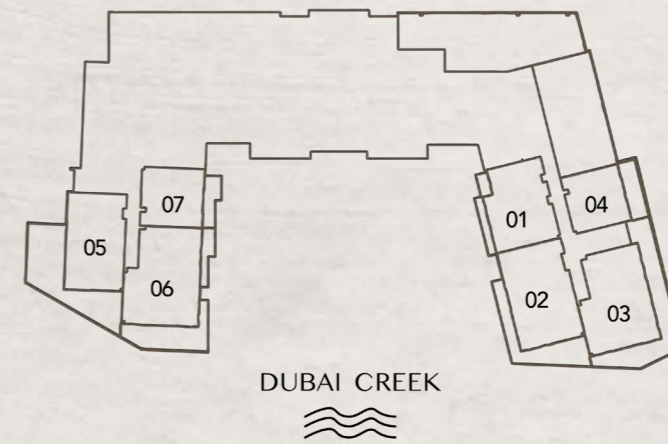


**2 BEDROOM
TYPE C**

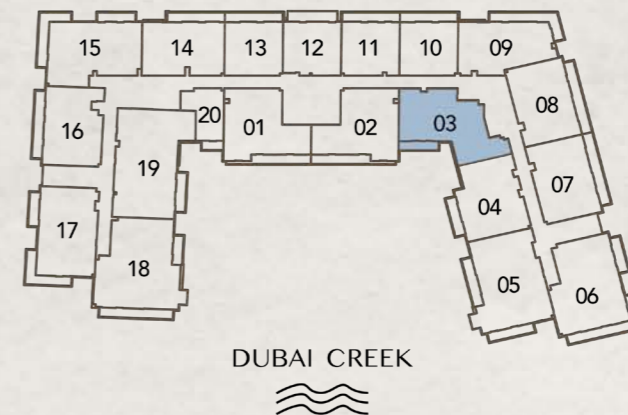


Internal Living Area : 1324.07 Sq. Ft
 Outdoor Living Area : 81.91 Sq. Ft
 Total Living Area : 1405.98 Sq. Ft

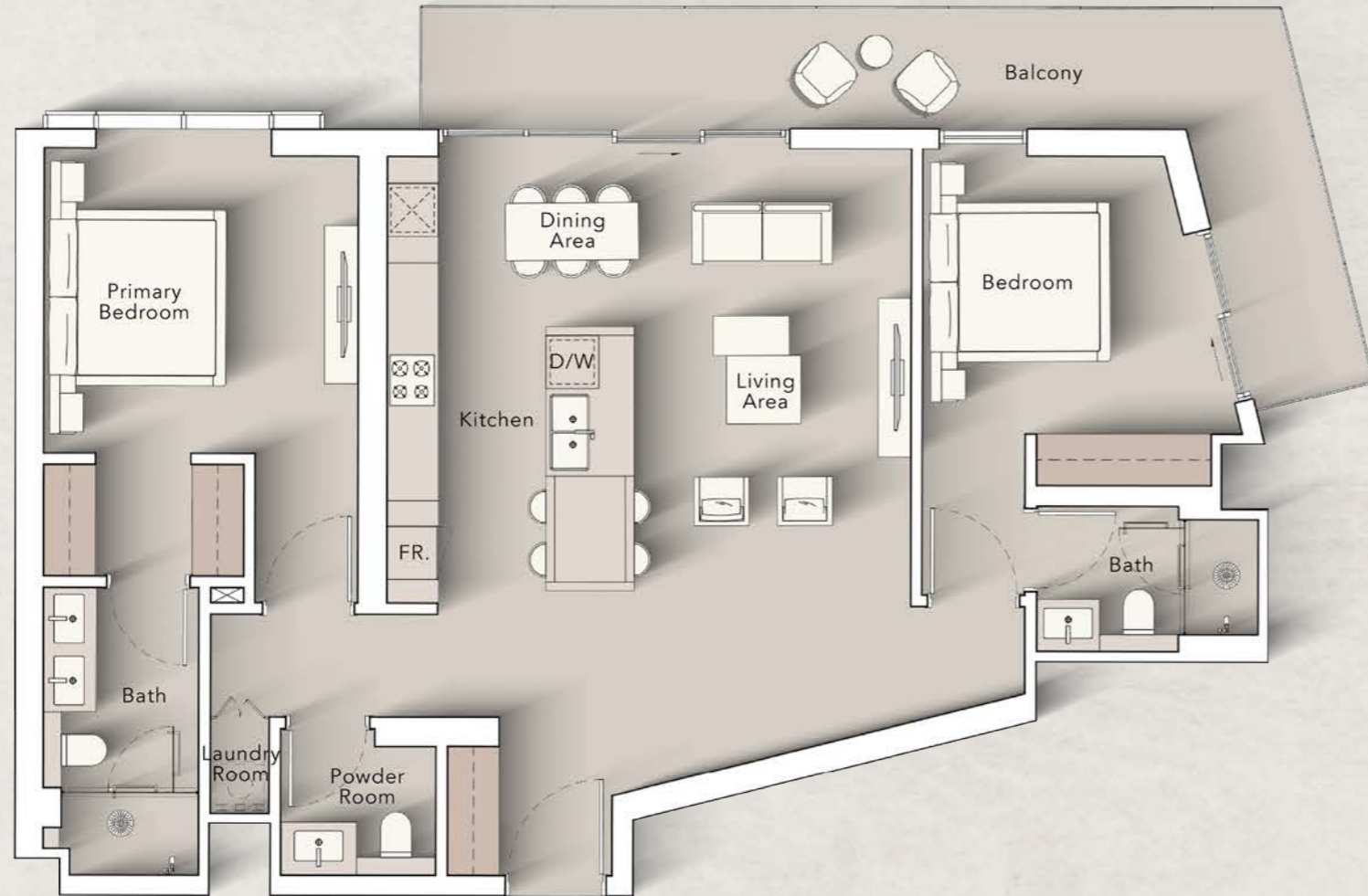
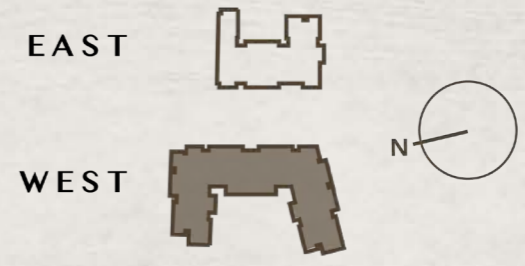
2nd Floor:



3rd - 10th Floor:

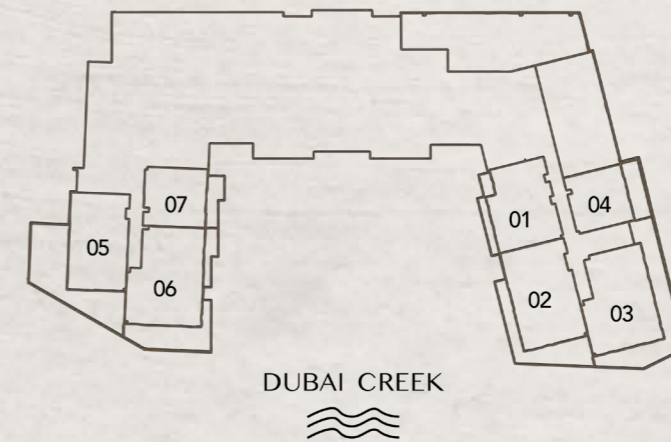


**2 BEDROOM
TYPE D**

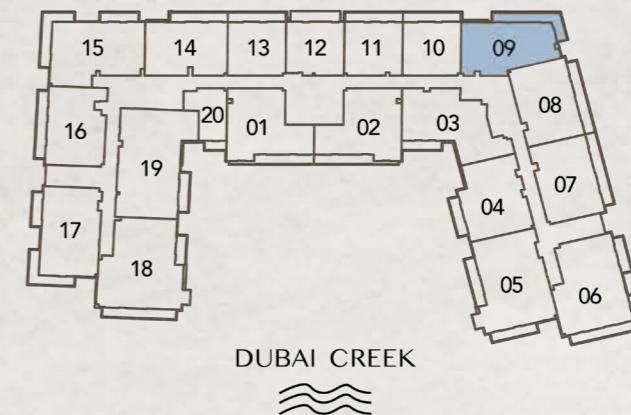


Internal Living Area : 1121.06 Sq. Ft
 Outdoor Living Area : 208.82 Sq. Ft
 Total Living Area : 1329.88 Sq. Ft

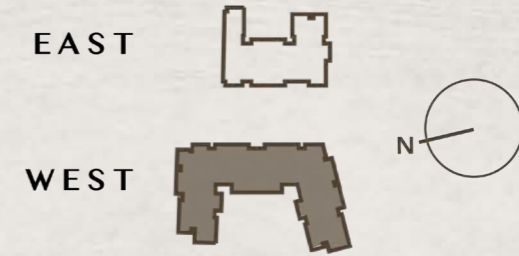
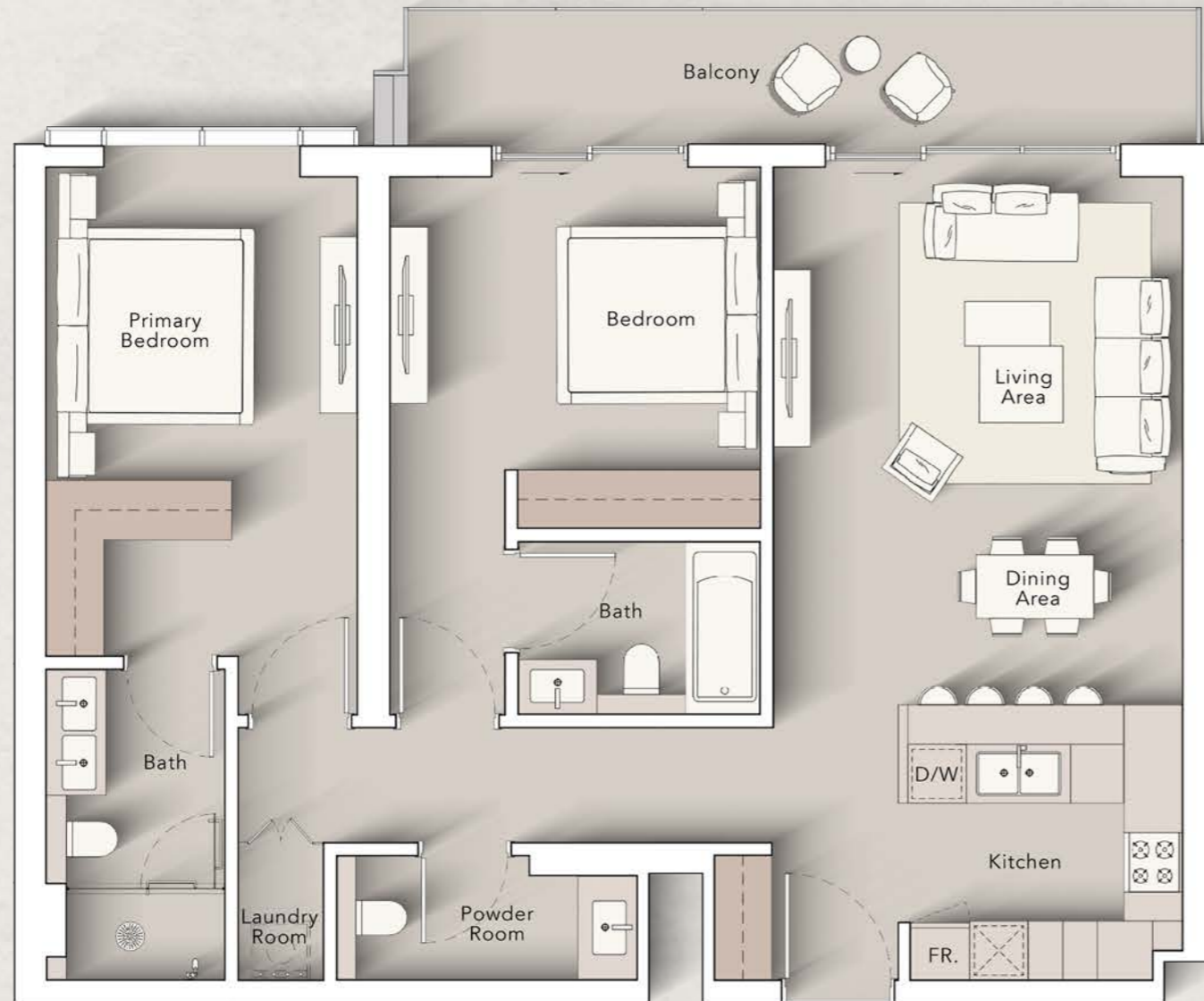
2nd Floor:



3rd - 10th Floor:

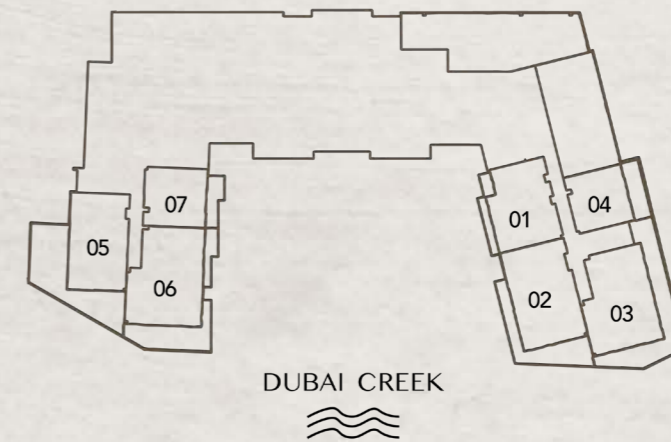


2 BEDROOM
TYPE E

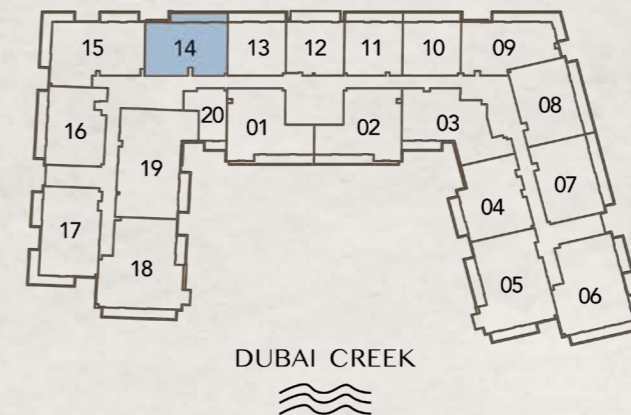


Internal Living Area : 1084.25 Sq. Ft
 Outdoor Living Area : 131.75 Sq. Ft
 Total Living Area : 1216.00 Sq. Ft

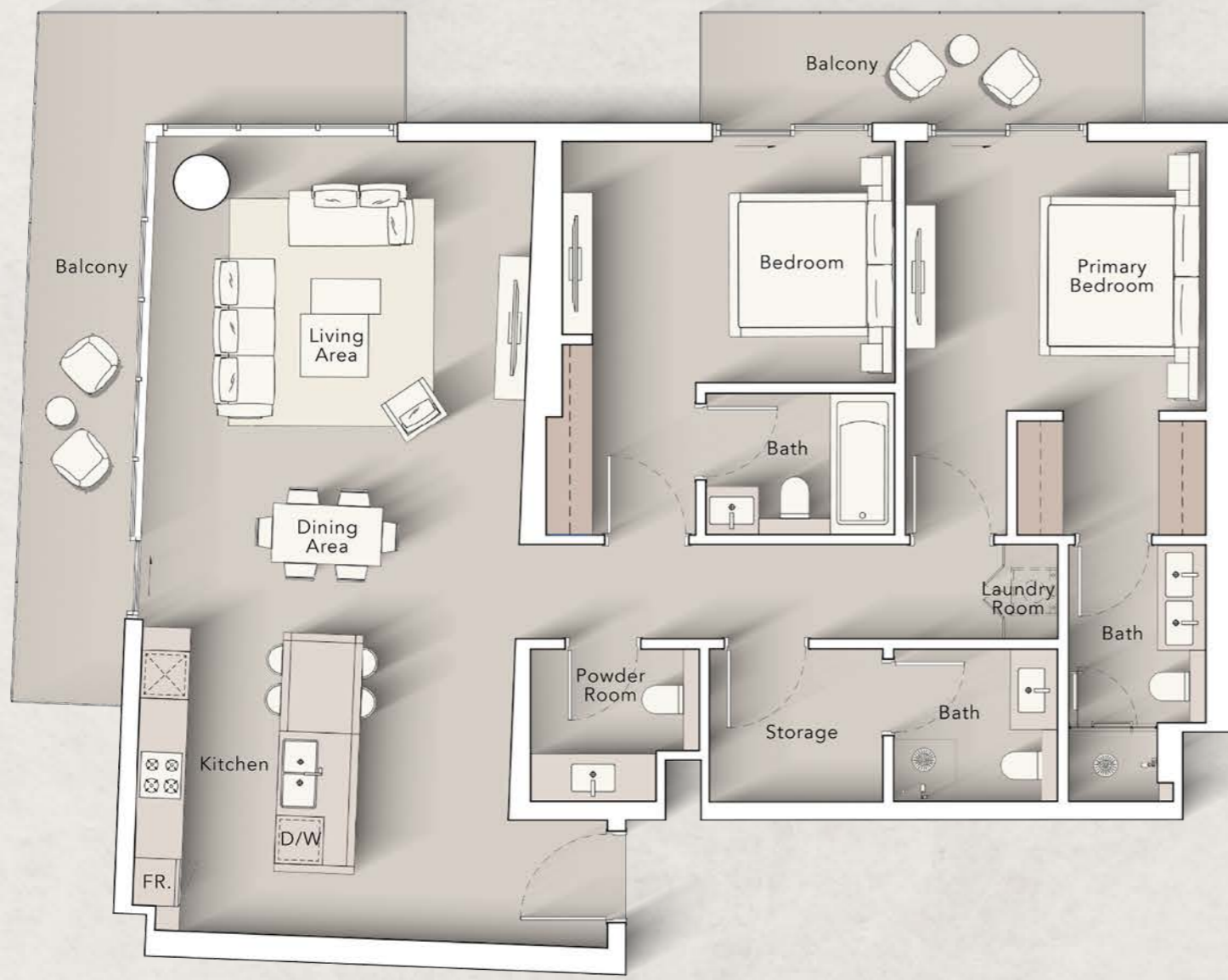
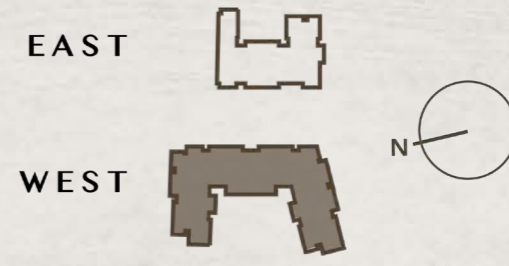
2nd Floor:



3rd - 10th Floor:

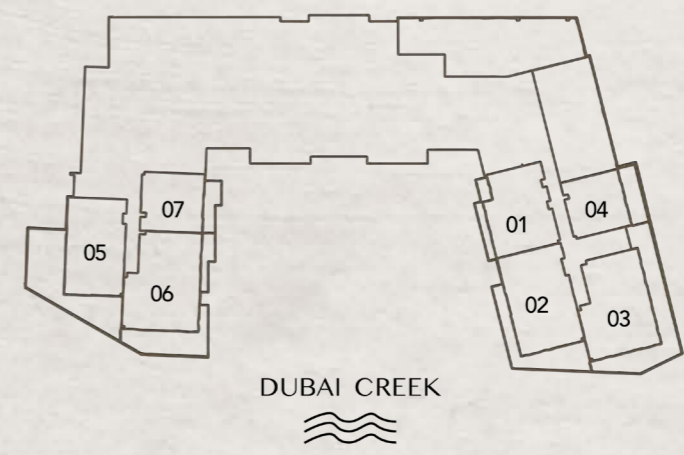


**2 BEDROOM
TYPE F**

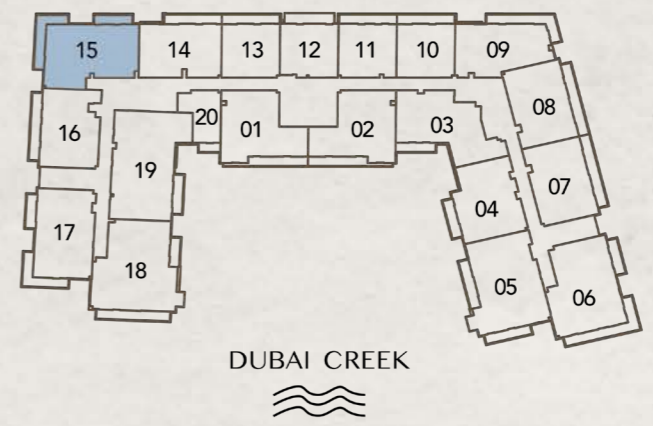


Internal Living Area : 1349.47 Sq. Ft
 Outdoor Living Area : 273.83 Sq. Ft
 Total Living Area : 1623.31 Sq. Ft

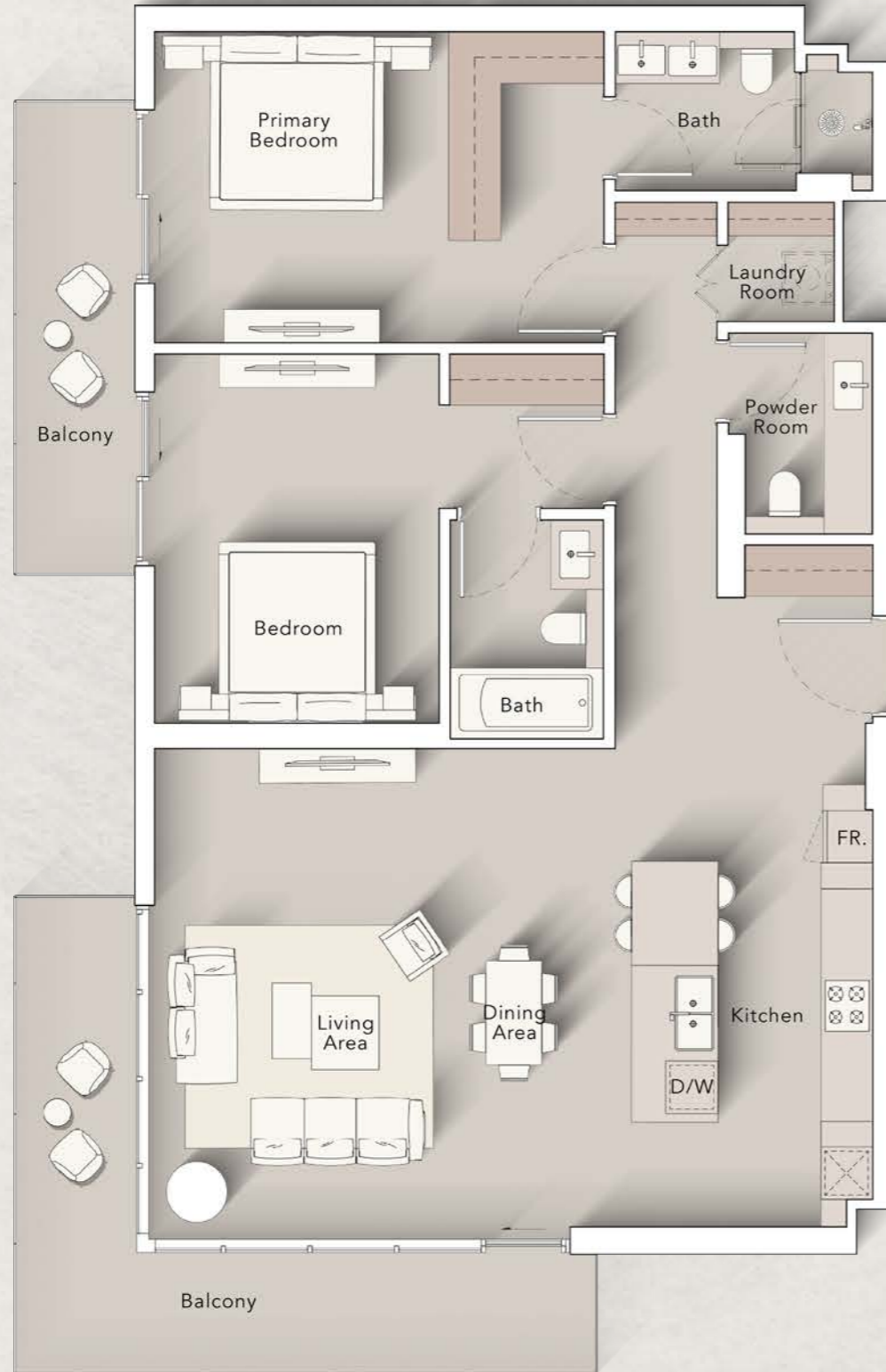
2nd Floor:



3rd - 10th Floor:

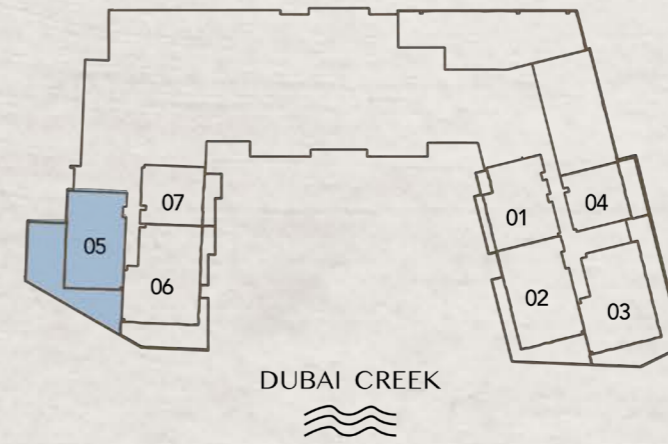


**2 BEDROOM
TYPE G**



Internal Living Area : 1279.51 Sq. Ft
 Outdoor Living Area : 254.78 Sq. Ft
 Total Living Area : 1534.29 Sq. Ft

2nd Floor:



3rd - 10th Floor:

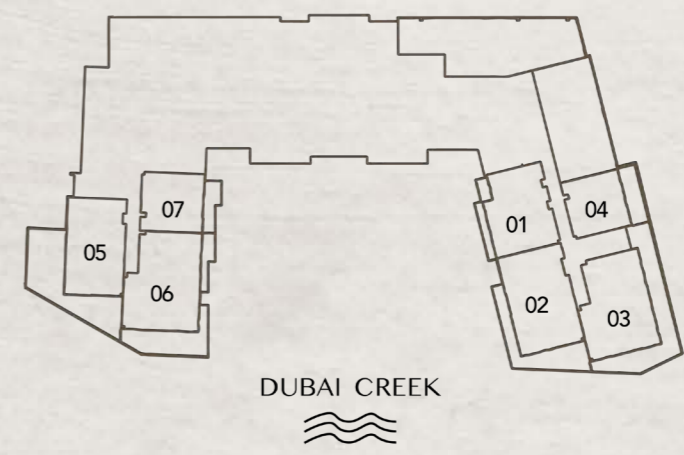


**2 BEDROOM
TYPE H**

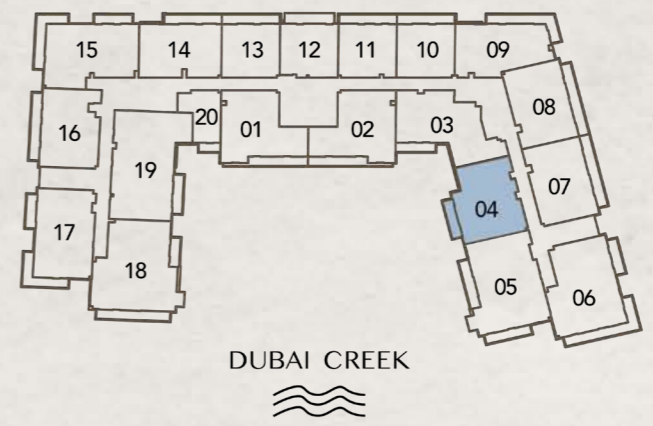


Internal Living Area : 1171.33 Sq. Ft
 Outdoor Living Area : 98.38 Sq. Ft
 Total Living Area : 1269.71 Sq. Ft

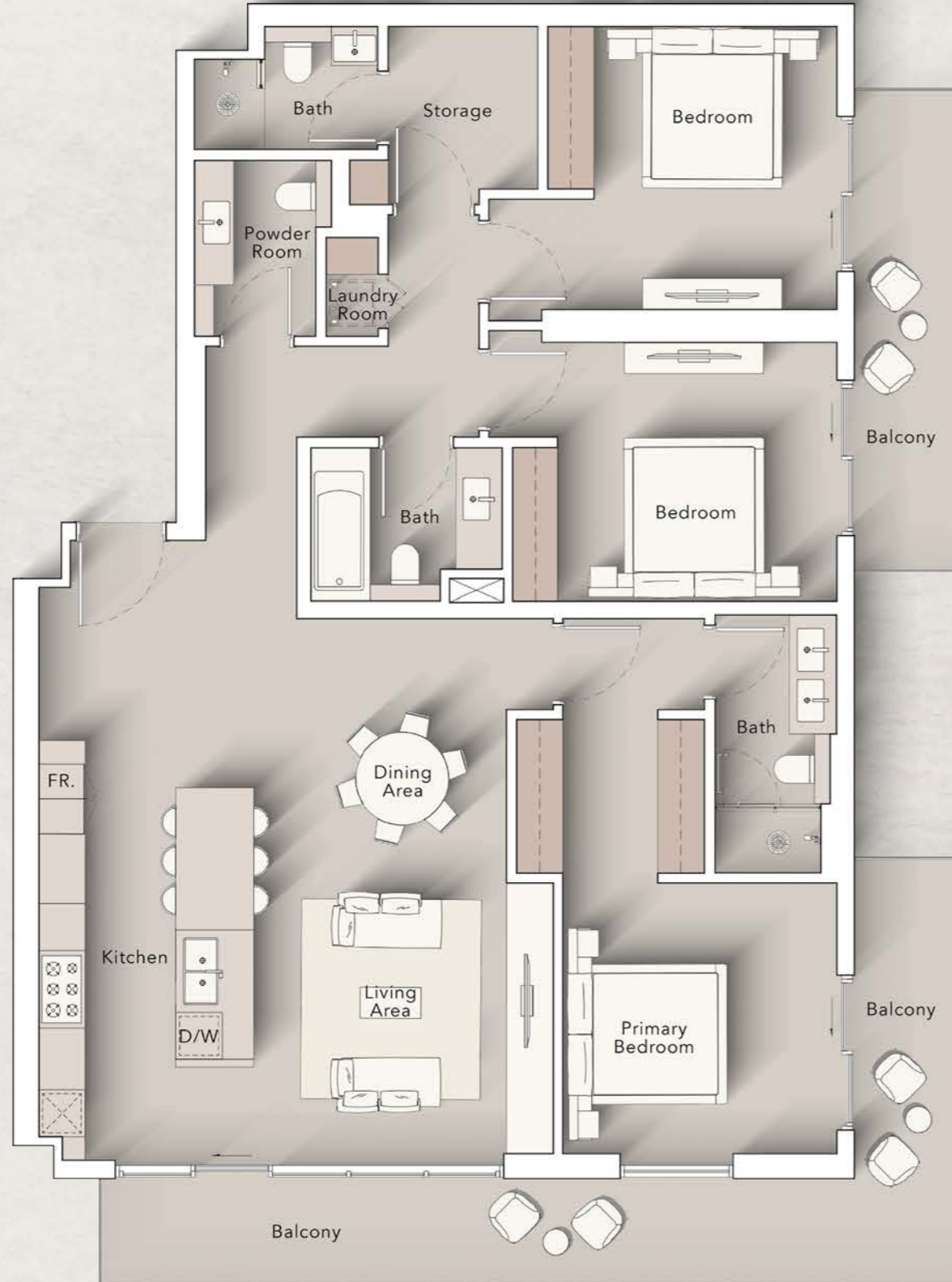
2nd Floor:



3rd - 10th Floor:

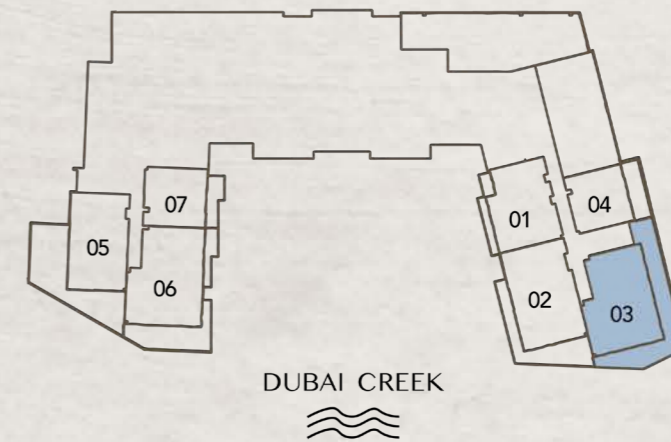


3 BEDROOM TYPE A



Internal Living Area : 1525.78 Sq. Ft
 Outdoor Living Area : 341.22 Sq. Ft
 Total Living Area : 1867.00 Sq. Ft

2nd Floor:



3rd - 10th Floor:

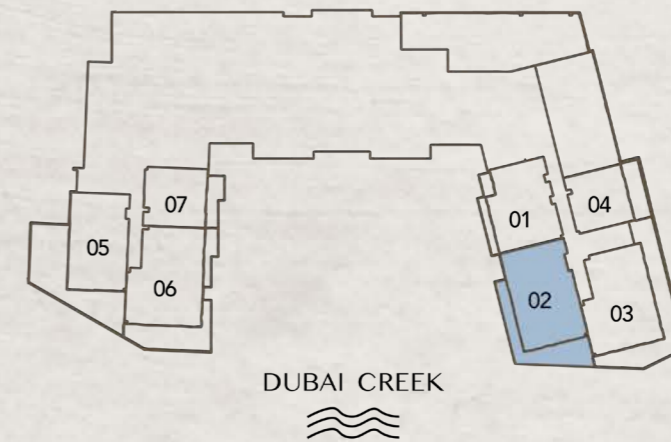


3 BEDROOM TYPE B

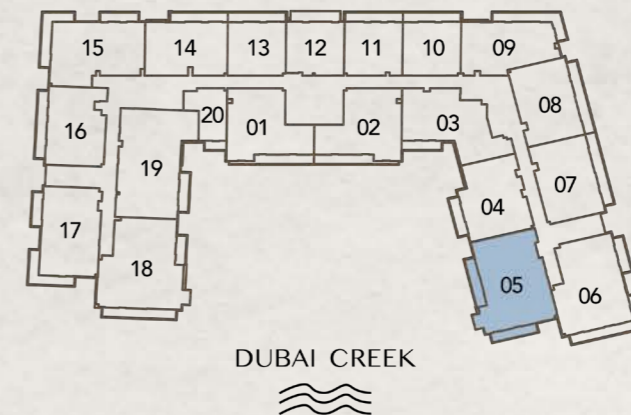


Internal Living Area : 1563.14 Sq. Ft
 Outdoor Living Area : 235.41 Sq. Ft
 Total Living Area : 1798.54 Sq. Ft

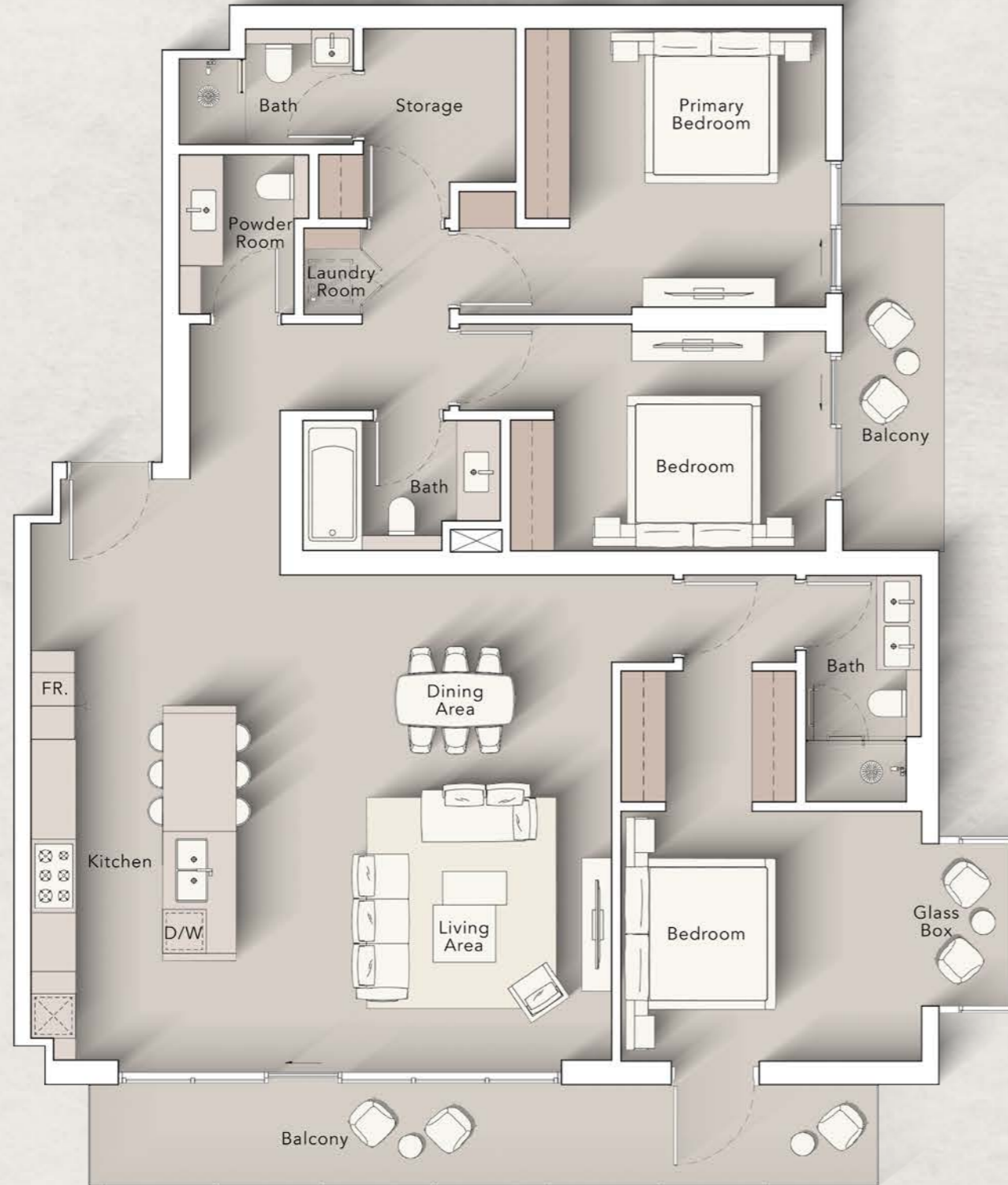
2nd Floor:



3rd - 10th Floor:

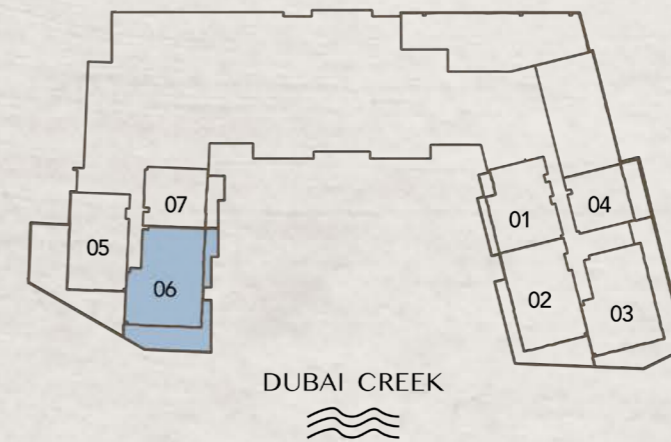


3 BEDROOM TYPE C

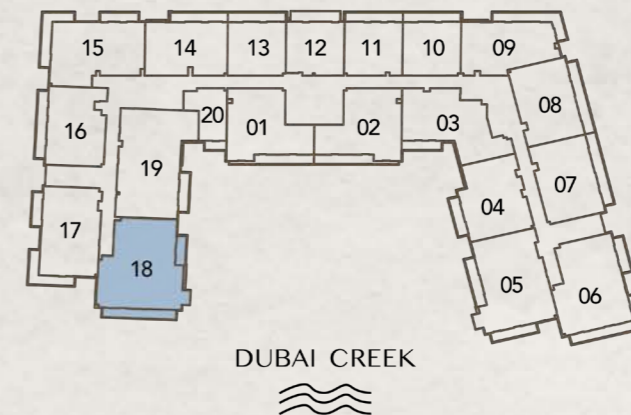


Internal Living Area : 1682.61 Sq. Ft
 Outdoor Living Area : 248.75 Sq. Ft
 Total Living Area : 1931.37 Sq. Ft

2nd Floor:



3rd - 10th Floor:

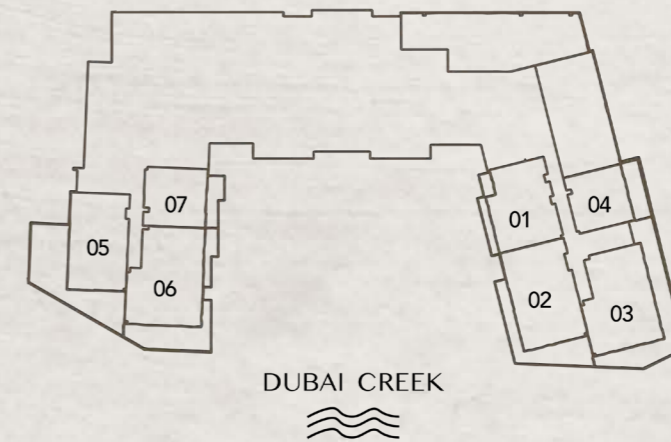


3 BEDROOM TYPE D



Internal Living Area : 1778.84 Sq. Ft
 Outdoor Living Area : 99.89 Sq. Ft
 Total Living Area : 1878.73 Sq. Ft

2nd Floor:



3rd - 10th Floor:



PAYMENT PLAN

20%

at the time of booking

10%

30 days after the reservation date

10%

90 days after the reservation date

5%

150 days after the reservation date

5%

240 days after the reservation date

5%

On completion of 30%
construction of the project

5%

On completion of 40%
construction of the project

5%

On completion of 50%
construction of the project

5%

On completion of 60%
construction of the project

30%

On completion