





Apartments by the water canal

CanalFront is located in the Jumeirah area right by the Dubai Water Canal and Safa Park. Downtown is just a 9-minute drive away, and Jumeirah Beach is a 15-minute walk away. It is possible to reach Dubai Marina in 16 minutes by car.





Jumeirah Beach
5 minutes

Tolerance Bridge
3 minutes

Four Seasons Hotel
5 minutes

Bulgari Hotel
6 minutes

Mandarin Oriental
8 minutes

Safa Park
1 minute

Dubai Canal
1 minute

Sheikh Zayed Rd
1 minute

HOTELS (5 MIN)

- 1. Bulgari Hotel & Resort
- 2. Four Seasons Jumeirah
- 3. Mandarin Oriental

HOTELS (10 MIN)

- 4. Armani Hotel Dubai
- 5. Burj Al Arab
- 6. Shangri-La Hotel

- 7. Ritz Carlton (DIFC)
- 8. Four Seasons (DIFC)

LEISURE (5 MIN)

ATTRACTIONS

- 1. Dubai Water Canal
- 2. Jumeirah Beach
- 3. Dubai Harbour 1 & 2
- 4. City Walk & Box Park
- 5. Meydan Grand Stand

SHOPPING MALLS

- 6. Dubai Mall (5 min)
- 7. Mall of The Emirates (10 min)

ARTS AND SHOWS

- 8. Dubai Design District (10 min)
- 9. La Perle (3 min)

EDUCATION

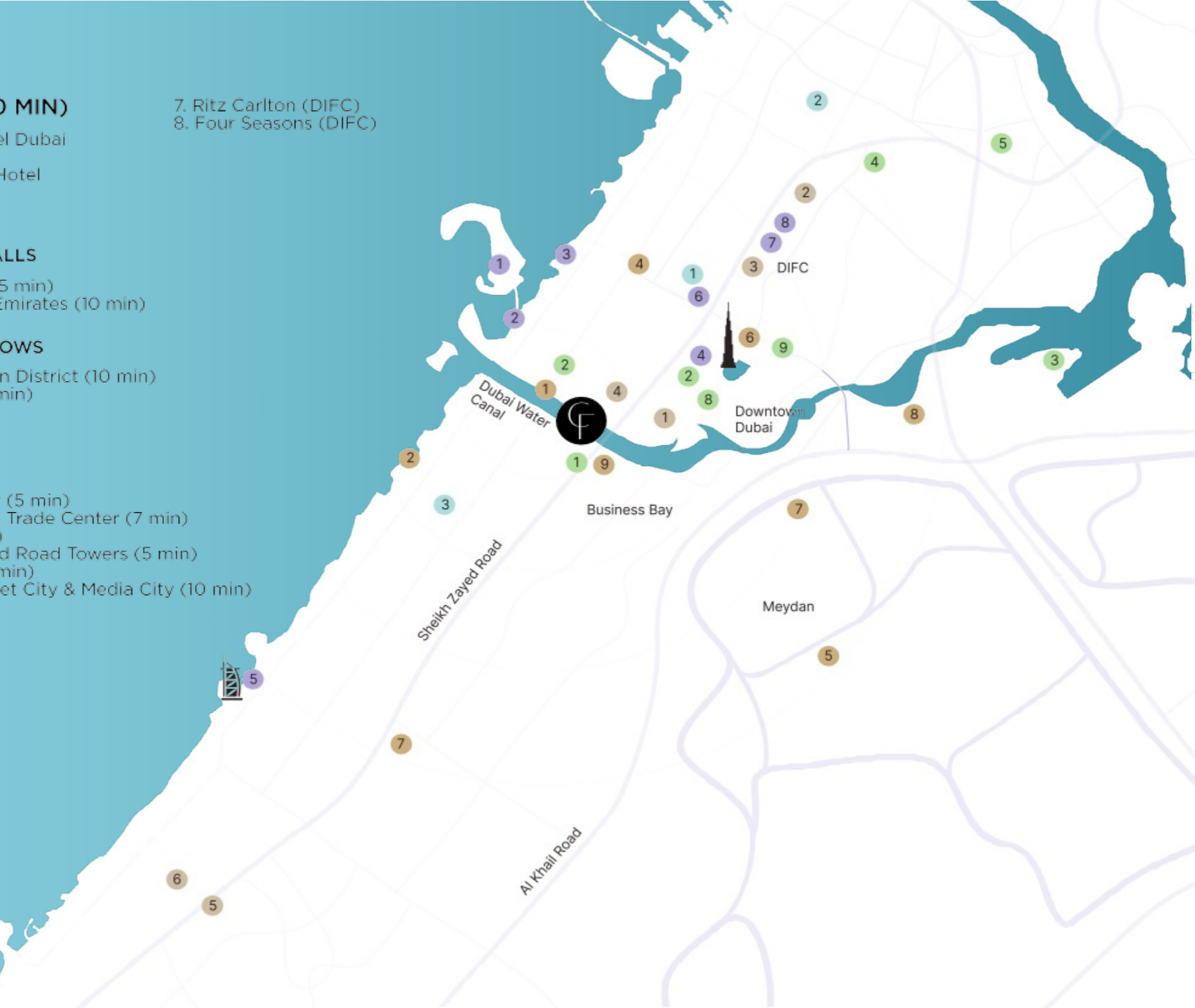
- 1. Canadian University Dubai
- 2. Maktoum Bin Hamdan College
- 3. Schools on Al Wasl Road

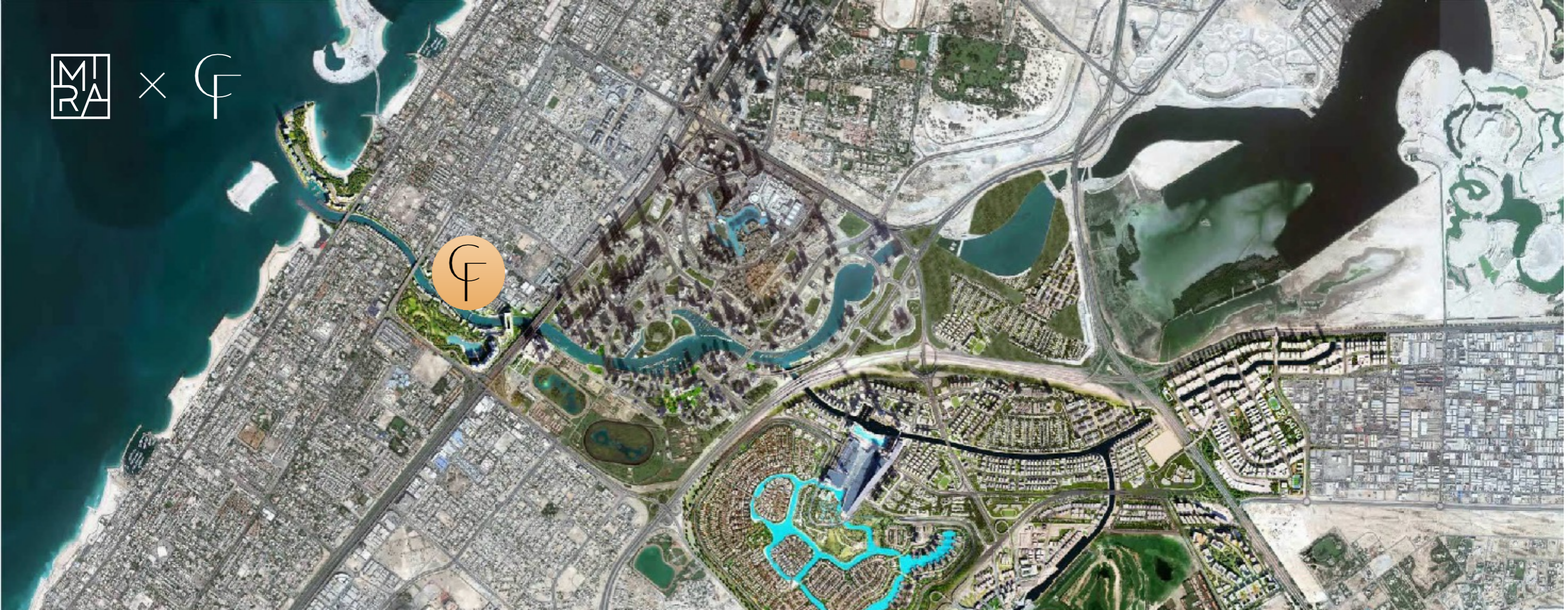
BUSINESS

- 1. Business Bay (5 min)
- 2. Dubai World Trade Center (7 min)
- 3. DIFC (7 min)
- 4. Sheikh Zayed Road Towers (5 min)
- 5. TECOM (10 min)
- 6. Dubai Internet City & Media City (10 min)

PARKS AND SANCTUARIES

- 1. Safa Park (1 min)
- 2. Burj Park (5 min)
- 3. Заповедник Ras Al Khor (10 min)
- 4. Zabeel Park (10 min)
- 5. Dubai Healthcare City (10 min)

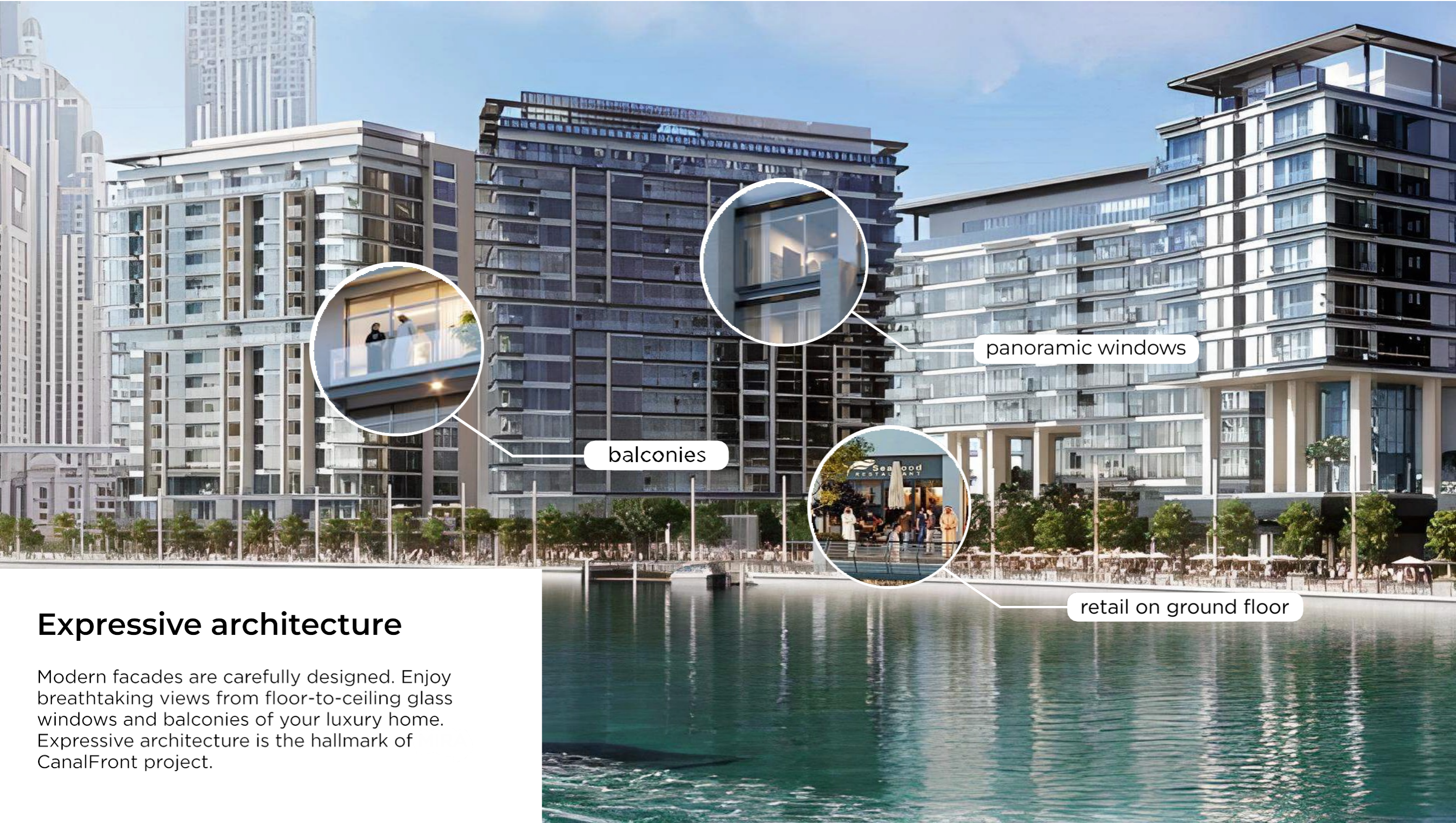




Project in the heart of Dubai

The residence is located near the Al Safa Green Park. There is a convenient exit to Sheikh Zayed Road, along which you can quickly get to the rest of the city. The Burj Khalifa Skyscraper and the DIFC Business Center are just 5 minutes away





balconies



panoramic windows



retail on ground floor

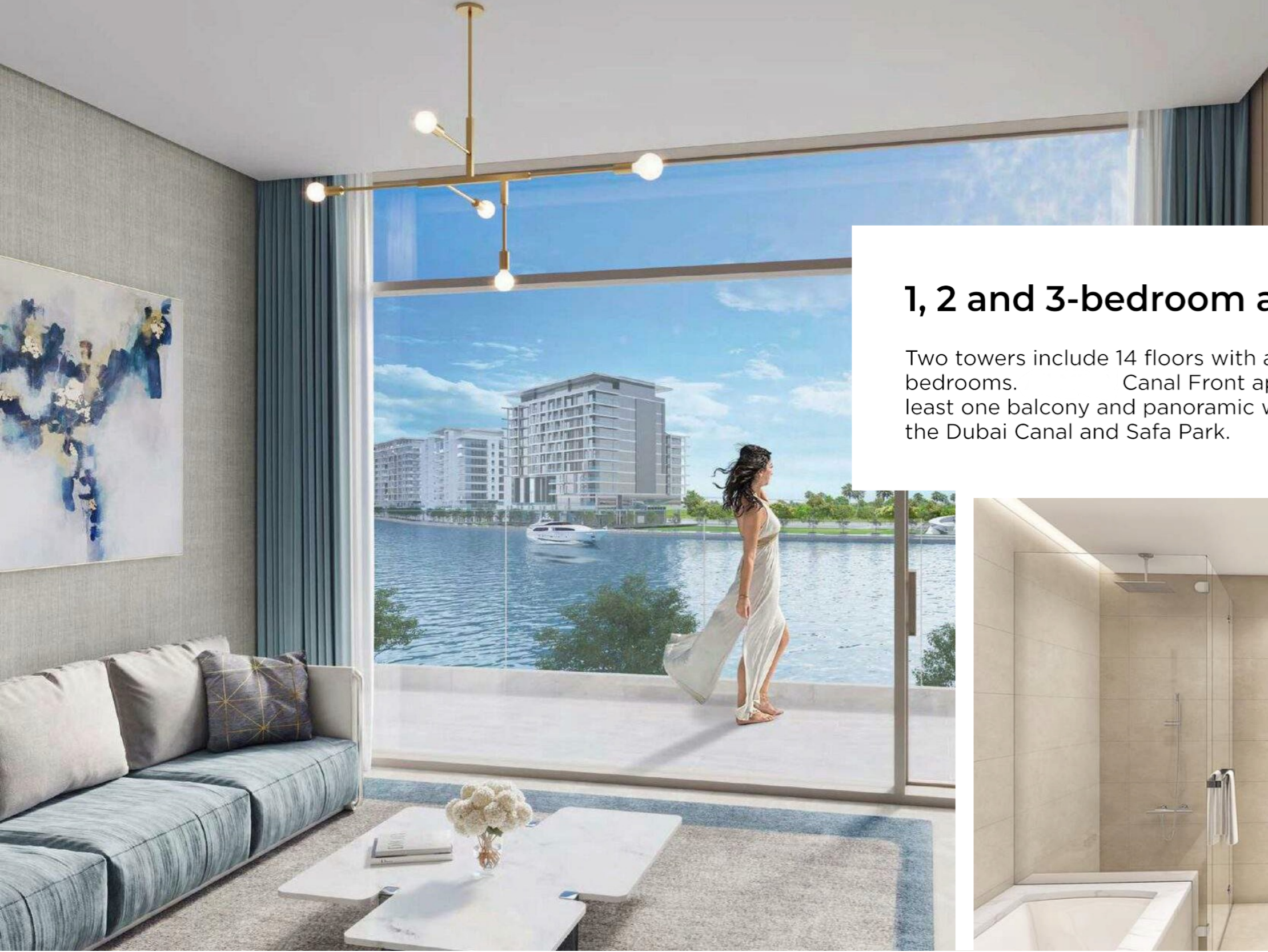
Expressive architecture

Modern facades are carefully designed. Enjoy breathtaking views from floor-to-ceiling glass windows and balconies of your luxury home. Expressive architecture is the hallmark of CanalFront project.

Modern finishings

Canal Front residential project is renowned for its well-appointed residences with large windows, spacious rooms, carefully designed interiors and unique pastel textures and finishes.





1, 2 and 3-bedroom apartments

Two towers include 14 floors with apartments from 1 to 3 bedrooms. Canal Front apartments include at least one balcony and panoramic windows with views of the Dubai Canal and Safa Park.





The project includes a variety of apartments from 914 sq. ft., with picturesque views of the embankment, the bridge and the Dubai skyline.



Unobstructed view of the water

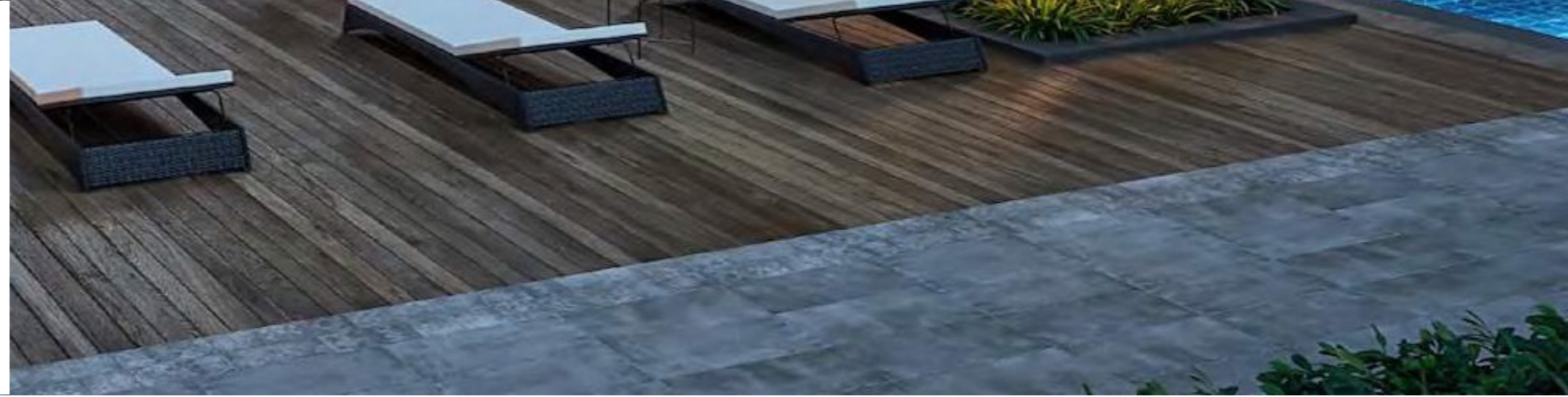
Canal Front project is surrounded by greenery and water. The apartments with an open balconies provide spectacular views of the canal as well as the stunning urban neighbourhood on the opposite side





Pool and recreation area

Canal Front offers a variety of activities. Enjoy swimming in the outdoor pool located on the podium. Relax with a cool drink in the sunny lounge. There is a barbecue area for family evening gatherings nearby.



Equipped gym and access to the garden

Canal Front has an equipped gym with panoramic windows. You can run on the treadmill overlooking the water or stroll through the landscaped gardens of Safa Park.





Terrace and lounge area

Each building has its own landscaped garden, where residents can enjoy spending time with friends or family on the spacious terrace, prepare meals in the open air, relax in the lounge area, or arrange a work meeting





Al Safa Park

Safa Park is one of the greenest parks in Dubai, located 1 minute walk from MIRA Canal Front. This is a great place for a family holiday, where you can spend time in a friendly company outdoors.

Canals with pedestrian bridges run through the entire park, only to converge into an artificial lake with beautiful fountains in the middle.





Safa Park is the only park in the Al Safa district with an area of 64 hectares, with recreation areas, cafes, sports and children's playgrounds.



Near the scenic bridge

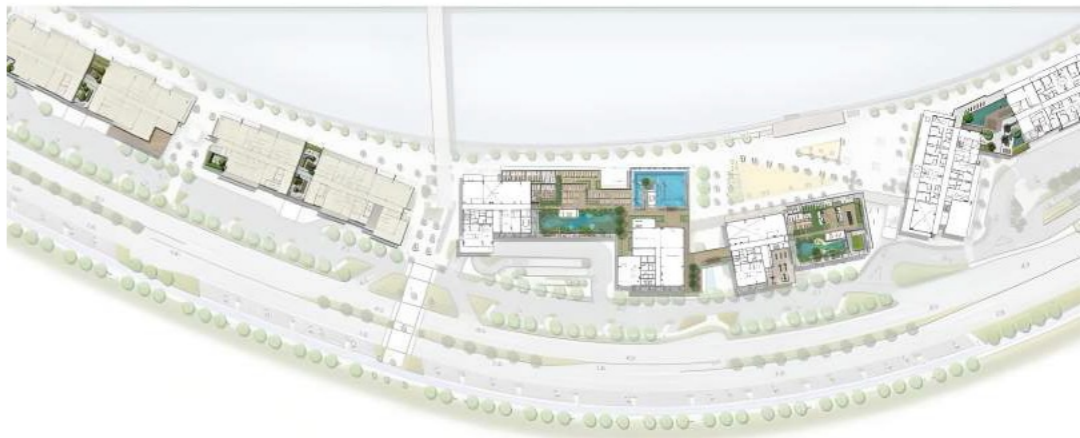
There is a graceful Tolerance Bridge right in front of the complex, with snow-white yachts slowly sailing by. The bridge is pedestrian only, so the air in your apartment will always be clean.





3 kilometers long landscaped embankment

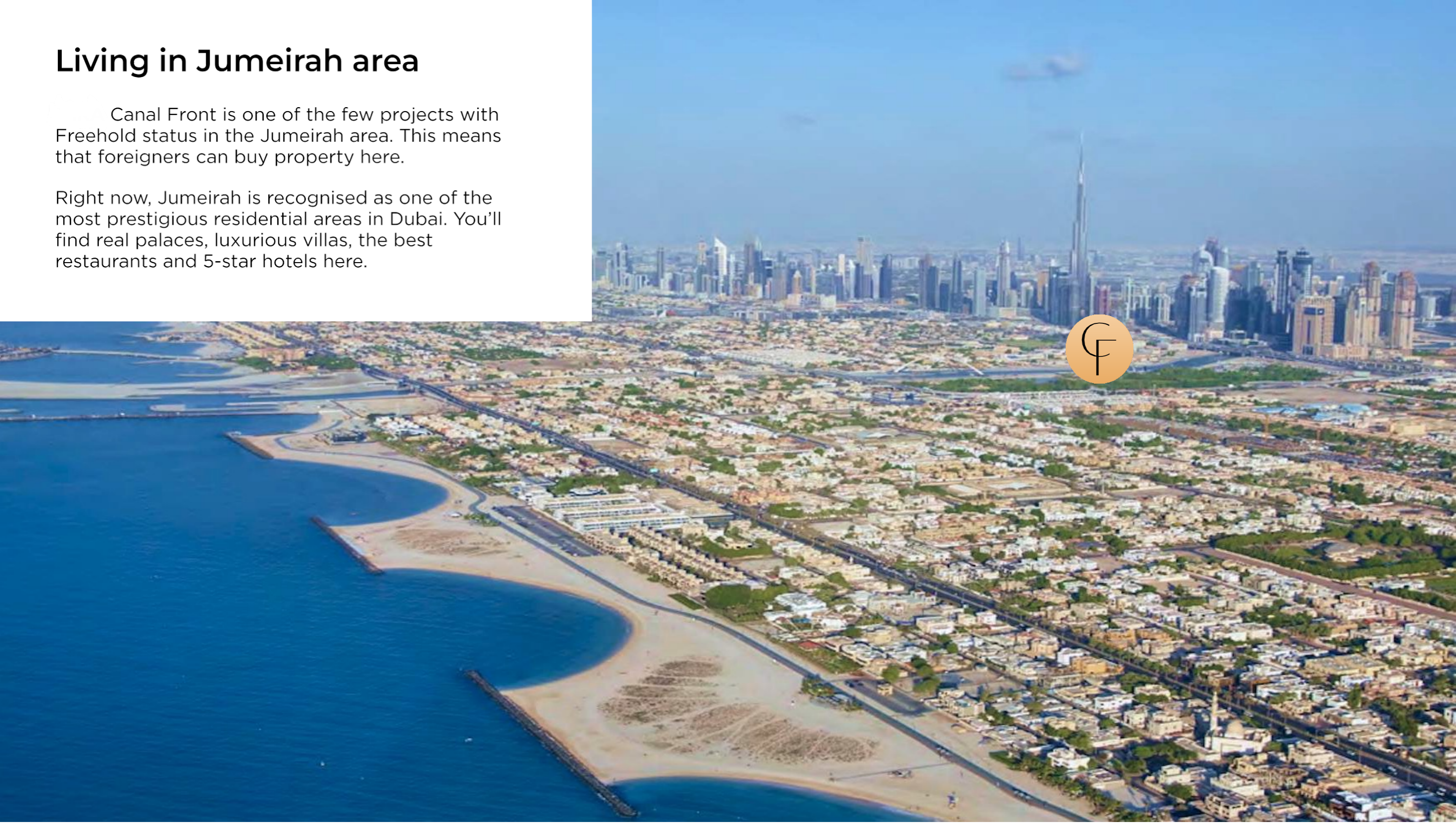
Walking enthusiasts will appreciate the walking trail to Safa and Jumeirah Beach, while direct access to the Dubai Water Canal and the waterfront will fill every day with a resort atmosphere.



Living in Jumeirah area

Canal Front is one of the few projects with Freehold status in the Jumeirah area. This means that foreigners can buy property here.

Right now, Jumeirah is recognised as one of the most prestigious residential areas in Dubai. You'll find real palaces, luxurious villas, the best restaurants and 5-star hotels here.





Water transport

The RTA marine transport station is located nearby. You can quickly get to the main attractions of Dubai from here.

