



GROUND FLOOR



FIRST FLOOR

## TYPE 2M Two Beds Middle. TOWNHOUSE

Ground Floor	743 sqft.	69 sqm.
First Floor	592 sqft.	55 sqm.
<b>Total Sellable Area</b>	<b>1335 sqft.</b>	<b>124 sqm.</b>

All floor plans depicted here with are not to scale, applied finishes and final unit areas are subject to change without prior notice at the discretion of Bloom Properties in line with the provision of contract of sale. Landscaping and interior design shown in the imagery including furniture, accessories and electronics are indicative only and will not be included within the offering.

Area of the plot is 1000 sqm. The plot is 10m wide and 100m long. The plot is located in the center of the city. The plot is surrounded by trees and greenery. The plot is very beautiful and suitable for building a house.



GROUND FLOOR



FIRST FLOOR

## TYPE 2M-1 Two Beds Middle 1. TOWNHOUSE

Ground Floor	743 sqft.	69 sqm.
First Floor	549 sqft.	51 sqm.
<b>Total Sellable Area</b>	<b>1292 sqft.</b>	<b>120 sqm.</b>

All floor plans depicted here with are not to scale, applied finishes and final unit areas are subject to change without prior notice at the discretion of Bloom Properties in line with the provision of contract of sale. Landscaping and interior design shown in the imagery including furniture, accessories and electronics are indicative only and will not be included within the offering.

All floor plans depicted here with are not to scale, applied finishes and final unit areas are subject to change without prior notice at the discretion of Bloom Properties in line with the provision of contract of sale. Landscaping and interior design shown in the imagery including furniture, accessories and electronics are indicative only and will not be included within the offering.



GROUND FLOOR



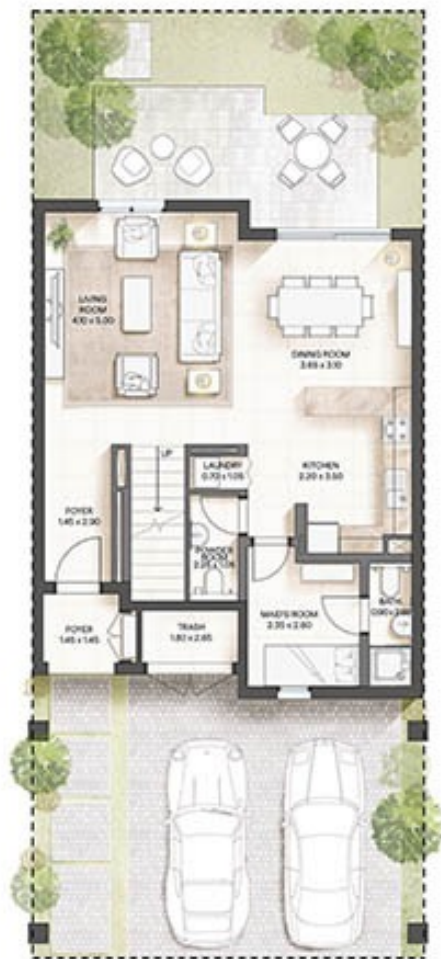
FIRST FLOOR

## TYPE 2E Two Beds End. TOWNHOUSE

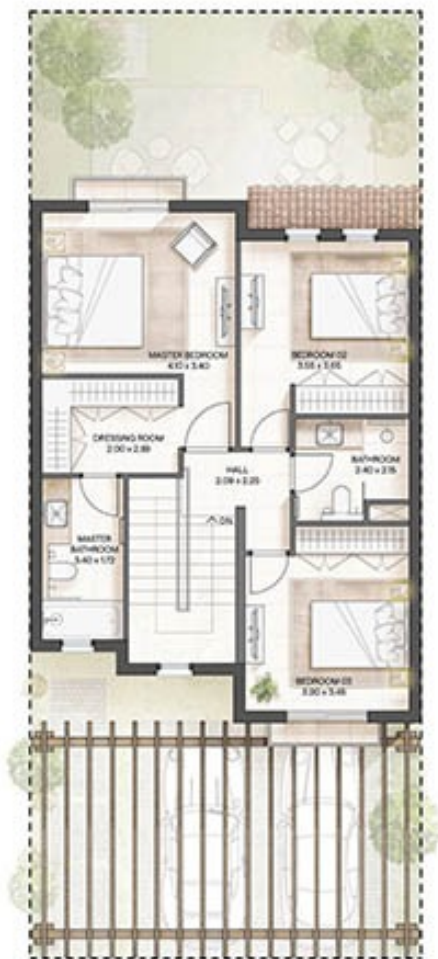
Ground Floor	764 sqft.	71 sqm.
First Floor	560 sqft.	52 sqm.
Total Sellable Area	1324 sqft.	123 sqm.

All floor plans depicted here with are not to scale, applied finishes and final unit areas are subject to change without prior notice at the discretion of Bloom Properties in line with the provision of contract of sale. Landscaping and interior design shown in the imagery including furniture, accessories and electronics are indicative only and will not be included within the offering.

All floor plans depicted here with are not to scale, applied finishes and final unit areas are subject to change without prior notice at the discretion of Bloom Properties in line with the provision of contract of sale. Landscaping and interior design shown in the imagery including furniture, accessories and electronics are indicative only and will not be included within the offering.



GROUND FLOOR



FIRST FLOOR

## TYPE 3M Three Beds Middle. TOWNHOUSE

Ground Floor	828 sqft.	77 sqm.
First Floor	797 sqft.	74 sqm.
<b>Total Sellable Area</b>	<b>1625 sqft.</b>	<b>151 sqm.</b>

All floor plans depicted here with are not to scale, applied finishes and final unit areas are subject to change without prior notice at the discretion of Bloom Properties in line with the provision of contract of sale. Landscaping and interior design shown in the imagery including furniture, accessories and electronics are indicative only and will not be included within the offering.

All floor plans depicted here with are not to scale, applied finishes and final unit areas are subject to change without prior notice at the discretion of Bloom Properties in line with the provision of contract of sale. Landscaping and interior design shown in the imagery including furniture, accessories and electronics are indicative only and will not be included within the offering.



GROUND FLOOR



FIRST FLOOR

## TYPE 3E Three Beds End. TOWNHOUSE

Ground Floor	958 sqft.	89 sqm.
First Floor	883 sqft.	82 sqm.
<b>Total Sellable Area</b>	<b>1841 sqft.</b>	<b>171 sqm.</b>

All floor plans depicted here with are not to scale, applied finishes and final unit areas are subject to change without prior notice at the discretion of Bloom Properties in line with the provision of contract of sale. Landscaping and interior design shown in the imagery including furniture, accessories and electronics are indicative only and will not be included within the offering.

جميع المخططات المبينة هنا هي غير متسقة، والمواد المستخدمة والقطاعات النهائية هي عرضة للتغيير دون إشعار مسبق، وبإذني شركة بلوم العقارية، وذلك وفقاً لما هو منصوص عليه في عقد البيع. تصميم الحدائق وتصميمات الأثاث والاكسسوارات والإلكترونيات المبينة في الصور هي عرضة للتغيير، ولن يتم تضمينها ضمن العرض.