

An architectural rendering of a modern residential development. The scene features two multi-story apartment buildings. The building on the left has a facade with vertical wooden slats and large glass windows. The building on the right is white with a grid-like window pattern. In the foreground, there is a paved walkway with a few people walking, surrounded by green lawns, manicured hedges, and several trees, including palm trees and larger leafy trees. The sky is clear and bright.

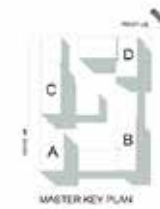
DUBAI HILLS  
ESTATE

PARK POINT

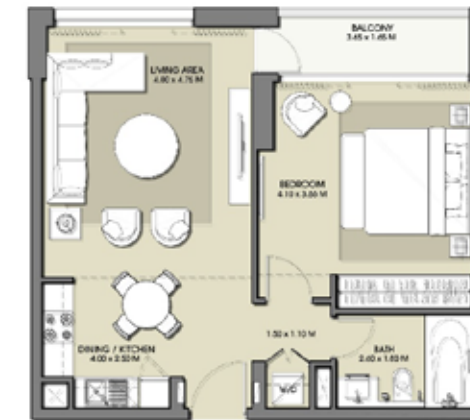


# FLOOR PLANS

## DUBAI HILLS ESTATE PARK POINT



		1 BEDROOM - 1.0					
LEVEL	UNIT NUMBER	AREA					
		SUITE		BALCONY		TOTAL	
		Ft <sup>2</sup>	m <sup>2</sup>	Ft <sup>2</sup>	m <sup>2</sup>	Ft <sup>2</sup>	m <sup>2</sup>
<b>BLOCK A</b>							
2	A201	601.1	55.8	67.38	6.3	668.44	62.1
	A205	603.3	56.1	74.49	6.9	677.81	63.0
3	A301	601.1	55.8	67.38	6.3	668.44	62.1
	A305	603.3	56.1	74.49	6.9	677.81	63.0
4	A401	601.1	55.8	67.38	6.3	668.44	62.1
	A405	603.3	56.1	74.49	6.9	677.81	63.0
5	A501	601.1	55.8	67.38	6.3	668.44	62.1
	A505	603.3	56.1	74.49	6.9	677.81	63.0
6	A601	601.1	55.8	67.38	6.3	668.44	62.1
	A605	603.3	56.1	74.49	6.9	677.81	63.0
7	A701	601.1	55.8	67.38	6.3	668.44	62.1
8	A801	601.1	55.8	67.38	6.3	668.44	62.1
9	A901	601.1	55.8	67.38	6.3	668.44	62.1



# DUBAI HILLS

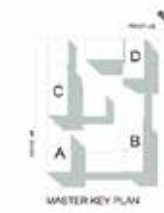
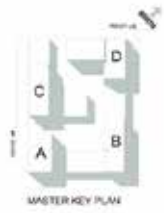
## ESTATE

### PARK POINT

# DUBAI HILLS

## ESTATE

### PARK POINT



#### 1 BEDROOM - 1.0

LEVEL	UNIT NUMBER	AREA					
		SUITE		BALCONY		TOTAL	
		Ft <sup>2</sup>	m <sup>2</sup>	Ft <sup>2</sup>	m <sup>2</sup>	Ft <sup>2</sup>	m <sup>2</sup>

#### BLOCK B

2	B213	616.8	57.3	67.92	6.3	684.70	63.6
3	B313	616.8	57.3	67.92	6.3	684.70	63.6
4	B413	616.8	57.3	67.92	6.3	684.70	63.6
5	B513	616.8	57.3	67.92	6.3	684.70	63.6
6	B613	616.8	57.3	67.92	6.3	684.70	63.6

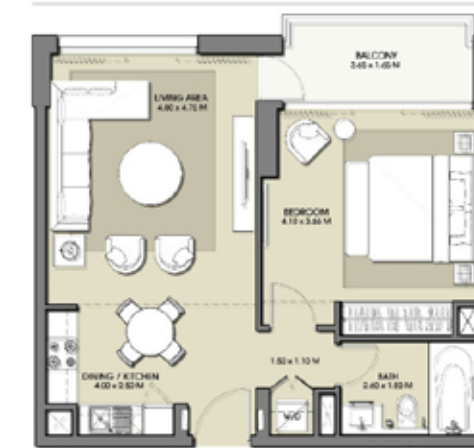


#### 1 BEDROOM - 1.0

LEVEL	UNIT NUMBER	AREA					
		SUITE		BALCONY		TOTAL	
		Ft <sup>2</sup>	m <sup>2</sup>	Ft <sup>2</sup>	m <sup>2</sup>	Ft <sup>2</sup>	m <sup>2</sup>

#### BLOCK C

2	C214	623.5	57.9	70.07	6.5	693.52	64.4
3	C314	623.5	57.9	70.07	6.5	693.52	64.4
4	C414	623.5	57.9	70.07	6.5	693.52	64.4
5	C514	623.5	57.9	70.07	6.5	693.52	64.4
6	C614	623.5	57.9	70.07	6.5	693.52	64.4



1. All dimensions are in imperial and metric, and measured to structural elements and exclude wall finishes and construction tolerances. 2. All materials, dimensions, and drawings are approximate only. 3. Information is subject to change without notice, at developer's absolute discretion. 4. Actual area may vary from the stated area. 5. Drawings not to scale. 6. All images used are for illustrative purposes only and do not represent the actual size, features, specifications, fittings, and furnishings. 7. The developer reserves the right to make revisions/ alterations, at its absolute discretion, without any liability whatsoever. \*Please note that landscaping and swimming pool are not provided by the developer.



1. All dimensions are in imperial and metric, and measured to structural elements and exclude wall finishes and construction tolerances. 2. All materials, dimensions, and drawings are approximate only. 3. Information is subject to change without notice, at developer's absolute discretion. 4. Actual area may vary from the stated area. 5. Drawings not to scale. 6. All images used are for illustrative purposes only and do not represent the actual size, features, specifications, fittings, and furnishings. 7. The developer reserves the right to make revisions/ alterations, at its absolute discretion, without any liability whatsoever. \*Please note that landscaping and swimming pool are not provided by the developer.

# DUBAI HILLS

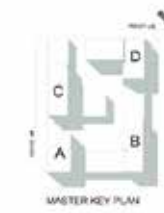
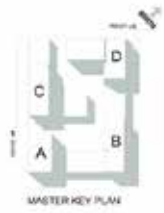
## ESTATE

### PARK POINT

# DUBAI HILLS

## ESTATE

### PARK POINT



#### 1 BEDROOM - 1.0

#### 1 BEDROOM - 1.0

LEVEL	UNIT NUMBER	AREA					
		SUITE		BALCONY		TOTAL	
		Ft <sup>2</sup>	m <sup>2</sup>	Ft <sup>2</sup>	m <sup>2</sup>	Ft <sup>2</sup>	m <sup>2</sup>

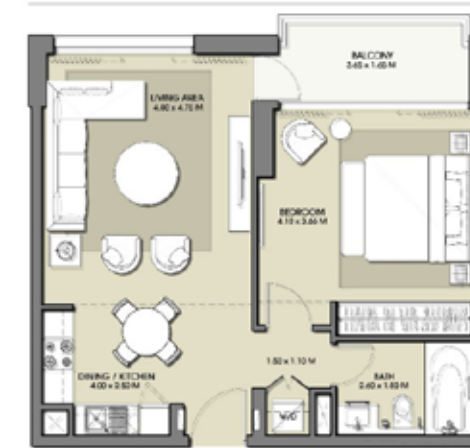
LEVEL	UNIT NUMBER	AREA					
		SUITE		BALCONY		TOTAL	
		Ft <sup>2</sup>	m <sup>2</sup>	Ft <sup>2</sup>	m <sup>2</sup>	Ft <sup>2</sup>	m <sup>2</sup>

#### BLOCK C

#### BLOCK C

1	C103	624.6	58.0	69.97	6.5	694.60	64.5
	C104	624.6	58.0	69.97	6.5	694.60	64.5
	C105	623.3	57.9	71.37	6.6	694.71	64.5
	C106	631.5	58.7	69.97	6.5	701.49	65.2
2	C201	623.9	58.0	67.71	6.3	691.59	64.3
	C208	624.6	58.0	69.97	6.5	694.60	64.5
	C209	624.6	58.0	69.97	6.5	694.60	64.5
	C210	624.6	58.0	70.07	6.5	694.71	64.5
	C211	631.5	58.7	69.97	6.5	701.49	65.2
3	C301	623.9	58.0	67.71	6.3	691.59	64.3
	C308	624.6	58.0	69.97	6.5	694.60	64.5
	C309	624.6	58.0	69.97	6.5	694.60	64.5
	C310	624.6	58.0	70.07	6.5	694.71	64.5
4	C401	623.9	58.0	67.71	6.3	691.59	64.3
	C408	624.6	58.0	69.97	6.5	694.60	64.5
	C409	624.6	58.0	69.97	6.5	694.60	64.5
	C410	624.6	58.0	70.07	6.5	694.71	64.5
	C411	631.5	58.7	69.97	6.5	701.49	65.2
	C413	624.6	58.0	69.97	6.5	694.60	64.5

5	C501	623.9	58.0	67.71	6.3	691.59	64.3
	C508	624.6	58.0	69.97	6.5	694.60	64.5
	C509	624.6	58.0	69.97	6.5	694.60	64.5
	C510	624.6	58.0	70.07	6.5	694.71	64.5
6	C601	623.9	58.0	67.71	6.3	691.59	64.3
	C608	624.6	58.0	69.97	6.5	694.60	64.5
	C609	624.6	58.0	69.97	6.5	694.60	64.5
	C610	624.6	58.0	70.07	6.5	694.71	64.5
	C611	631.5	58.7	69.97	6.5	701.49	65.2
7	C703	625.4	58.1	69.43	6.5	694.82	64.6
	C704	628.2	58.4	69.43	6.5	697.61	64.8
	C803	625.4	58.1	69.43	6.5	694.82	64.6
8	C804	628.2	58.4	69.43	6.5	697.61	64.8



# DUBAI HILLS

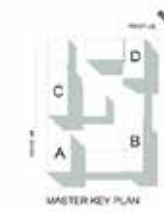
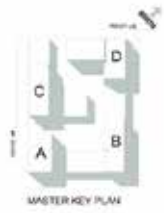
## ESTATE

### PARK POINT

# DUBAI HILLS

## ESTATE

### PARK POINT



#### 1 BEDROOM - 1.0

LEVEL	UNIT NUMBER	AREA					
		SUITE		BALCONY		TOTAL	
		Ft <sup>2</sup>	m <sup>2</sup>	Ft <sup>2</sup>	m <sup>2</sup>	Ft <sup>2</sup>	m <sup>2</sup>

#### BLOCK C

2	C215	622.6	57.8	69.97	6.5	692.56	64.3
3	C315	624.7	58.0	67.81	6.3	692.56	64.3
4	C415	622.6	57.8	69.97	6.5	692.56	64.3
5	C515	624.7	58.0	67.81	6.3	692.56	64.3
6	C615	622.6	57.8	69.97	6.5	692.56	64.3



#### 1 BEDROOM - 1.0.a

LEVEL	UNIT NUMBER	AREA					
		SUITE		BALCONY		TOTAL	
		Ft <sup>2</sup>	m <sup>2</sup>	Ft <sup>2</sup>	m <sup>2</sup>	Ft <sup>2</sup>	m <sup>2</sup>

#### BLOCK C

	C108	670.4	62.3	188.2	17.5	858.5	79.8
1	C109	672.1	62.4	190.8	17.7	862.9	80.2
	C110	676.1	62.8	183.8	17.1	859.9	79.9

#### BLOCK D

1	D102	730.1	67.8	222.5	20.7	952.6	88.5
---	------	-------	------	-------	------	-------	------



1. All dimensions are in imperial and metric, and measured to structural elements and exclude wall finishes and construction tolerances. 2. All materials, dimensions, and drawings are approximate only. 3. Information is subject to change without notice, at developer's absolute discretion. 4. Actual area may vary from the stated area. 5. Drawings not to scale. 6. All images used are for illustrative purposes only and do not represent the actual size, features, specifications, fittings, and furnishings. 7. The developer reserves the right to make revisions/ alterations, at its absolute discretion, without any liability whatsoever. \*Please note that landscaping and swimming pool are not provided by the developer.



1. All dimensions are in imperial and metric, and measured to structural elements and exclude wall finishes and construction tolerances. 2. All materials, dimensions, and drawings are approximate only. 3. Information is subject to change without notice, at developer's absolute discretion. 4. Actual area may vary from the stated area. 5. Drawings not to scale. 6. All images used are for illustrative purposes only and do not represent the actual size, features, specifications, fittings, and furnishings. 7. The developer reserves the right to make revisions/ alterations, at its absolute discretion, without any liability whatsoever. \*Please note that landscaping and swimming pool are not provided by the developer.

# DUBAI HILLS

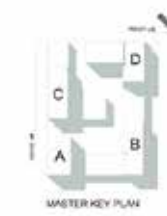
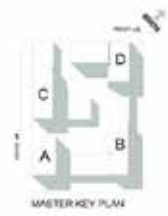
## ESTATE

### PARK POINT

# DUBAI HILLS

## ESTATE

### PARK POINT



1 BEDROOM - 1.0.b								
LEVEL	UNIT NUMBER	AREA						
		SUITE		BALCONY		TOTAL		
		Ft <sup>2</sup>	m <sup>2</sup>	Ft <sup>2</sup>	m <sup>2</sup>	Ft <sup>2</sup>	m <sup>2</sup>	
BLOCK A								
2	A204	573.8	53.3	61.0	5.7	634.9	59.0	
3	A304	575.0	53.4	61.7	5.7	636.7	59.2	
4	A404	573.8	53.3	61.0	5.7	634.9	59.0	
5	A504	575.0	53.4	61.7	5.7	636.7	59.2	
6	A604	573.8	53.3	61.0	5.7	634.9	59.0	
7	A704	575.0	53.4	61.7	5.7	636.7	59.2	
8	A804	573.8	53.3	61.0	5.7	634.9	59.0	
9	A903	575.3	53.5	61.0	5.7	636.4	59.1	



1 BEDROOM - 1.0.c								
LEVEL	UNIT NUMBER	AREA						
		SUITE		BALCONY		TOTAL		
		Ft <sup>2</sup>	m <sup>2</sup>	Ft <sup>2</sup>	m <sup>2</sup>	Ft <sup>2</sup>	m <sup>2</sup>	
BLOCK A								
7	A705	603.3	56.1	74.4	6.9	677.8	63.0	
8	A805	603.3	56.1	74.5	6.9	677.8	63.0	
9	A904	603.3	56.1	65.2	6.1	668.6	62.1	



1. All dimensions are in imperial and metric, and measured to structural elements and exclude wall finishes and construction tolerances. 2. All materials, dimensions, and drawings are approximate only. 3. Information is subject to change without notice, at developer's absolute discretion. 4. Actual area may vary from the stated area. 5. Drawings not to scale. 6. All images used are for illustrative purposes only and do not represent the actual size, features, specifications, fittings, and furnishings. 7. The developer reserves the right to make revisions/ alterations, at its absolute discretion, without any liability whatsoever. \*Please note that landscaping and swimming pool are not provided by the developer.



1. All dimensions are in imperial and metric, and measured to structural elements and exclude wall finishes and construction tolerances. 2. All materials, dimensions, and drawings are approximate only. 3. Information is subject to change without notice, at developer's absolute discretion. 4. Actual area may vary from the stated area. 5. Drawings not to scale. 6. All images used are for illustrative purposes only and do not represent the actual size, features, specifications, fittings, and furnishings. 7. The developer reserves the right to make revisions/ alterations, at its absolute discretion, without any liability whatsoever. \*Please note that landscaping and swimming pool are not provided by the developer.

# DUBAI HILLS

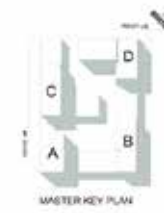
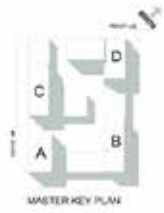
## ESTATE

### PARK POINT

# DUBAI HILLS

## ESTATE

### PARK POINT

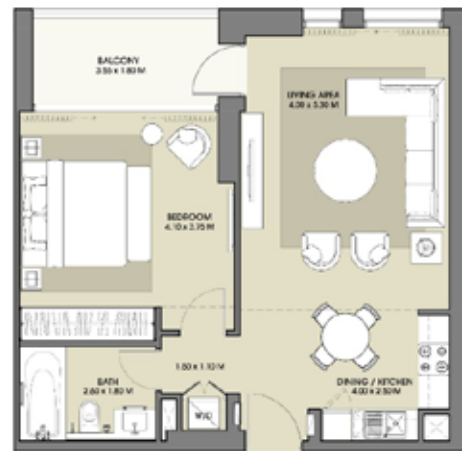


#### 1 BEDROOM - 1.0.d

LEVEL	UNIT NUMBER	AREA					
		SUITE		BALCONY		TOTAL	
		Ft <sup>2</sup>	m <sup>2</sup>	Ft <sup>2</sup>	m <sup>2</sup>	Ft <sup>2</sup>	m <sup>2</sup>

#### BLOCK D

1	D104	662.6	61.6	70.2	6.5	732.8	68.1
	D105	658.0	61.1	68.9	6.4	726.9	67.5
2	D201	653.4	60.7	73.2	6.8	726.6	67.5
	D202	655.4	60.9	73.2	6.8	728.6	67.7
	D203	655.4	60.9	73.2	6.8	728.6	67.7
	D205	661.6	61.5	61.5	5.7	723.0	67.2
3	D206	656.6	61.0	70.2	6.5	726.8	67.5
	D301	653.4	60.7	73.2	6.8	726.6	67.5
	D302	655.4	60.9	73.2	6.8	728.6	67.7
	D303	655.4	60.9	73.2	6.8	728.6	67.7
4	D305	661.6	61.5	61.5	5.7	723.0	67.2
	D306	656.6	61.0	70.2	6.5	726.8	67.5
	D401	653.4	60.7	73.2	6.8	726.6	67.5
	D402	655.4	60.9	73.2	6.8	728.6	67.7
	D403	655.4	60.9	73.2	6.8	728.6	67.7
4	D405	661.6	61.5	61.5	5.7	723.0	67.2
	D406	656.6	61.0	70.2	6.5	726.8	67.5

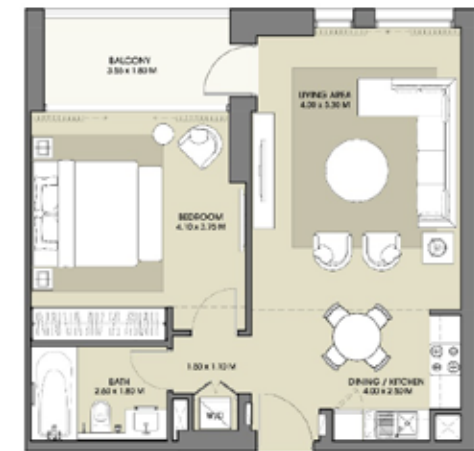


#### 1 BEDROOM - 1.0.d

LEVEL	UNIT NUMBER	AREA					
		SUITE		BALCONY		TOTAL	
		Ft <sup>2</sup>	m <sup>2</sup>	Ft <sup>2</sup>	m <sup>2</sup>	Ft <sup>2</sup>	m <sup>2</sup>

#### BLOCK D

5	D501	653.4	60.7	73.2	6.8	726.6	67.5
	D502	655.4	60.9	73.2	6.8	728.6	67.7
6	D503	655.4	60.9	73.2	6.8	728.6	67.7
	D505	661.6	61.5	61.5	5.7	723.0	67.2
	D506	656.6	61.0	70.2	6.5	726.8	67.5
	D601	653.4	60.7	73.2	6.8	726.6	67.5
7	D602	655.4	60.9	73.2	6.8	728.6	67.7
	D603	655.4	60.9	73.2	6.8	728.6	67.7
	D605	661.6	61.5	61.5	5.7	723.0	67.2
	D606	656.6	61.0	70.2	6.5	726.8	67.5
8	D704	661.6	61.5	61.5	5.7	723.0	67.2
	D705	656.6	61.0	70.2	6.5	726.8	67.5
	D804	661.6	61.5	61.5	5.7	723.0	67.2
8	D805	656.6	61.0	70.2	6.5	726.8	67.5



# DUBAI HILLS

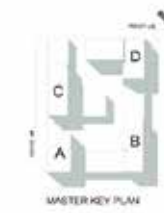
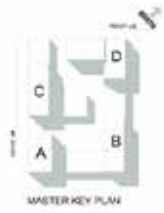
## ESTATE

### PARK POINT

# DUBAI HILLS

## ESTATE

### PARK POINT



#### 2 BEDROOM – 2.0

LEVEL	UNIT NUMBER	AREA					
		SUITE		BALCONY		TOTAL	
		Ft <sup>2</sup>	m <sup>2</sup>	Ft <sup>2</sup>	m <sup>2</sup>	Ft <sup>2</sup>	m <sup>2</sup>

#### BLOCK B

1	B105	973.2	90.4	69.4	6.5	1042.6	96.9
	B106	957.4	88.9	68.6	6.4	1025.9	95.3
	B107	959.0	89.1	67.3	6.3	1026.2	95.3



#### 2 BEDROOM – 2.0

LEVEL	UNIT NUMBER	AREA					
		SUITE		BALCONY		TOTAL	
		Ft <sup>2</sup>	m <sup>2</sup>	Ft <sup>2</sup>	m <sup>2</sup>	Ft <sup>2</sup>	m <sup>2</sup>

#### BLOCK B

2	B202	958.6	89.1	68.1	6.3	1026.8	95.4
	B205	971.0	90.2	69.4	6.5	1040.4	96.7
	B206	953.3	88.6	67.9	6.3	1021.2	94.9
	B207	957.4	88.9	67.3	6.3	1024.6	95.2
3	B302	958.6	89.1	68.1	6.3	1026.8	95.4
	B305	971.0	90.2	69.4	6.5	1040.4	96.7
	B306	953.3	88.6	67.9	6.3	1021.2	94.9
	B307	957.4	88.9	67.3	6.3	1024.6	95.2
4	B402	958.6	89.1	68.1	6.3	1026.8	95.4
	B405	971.0	90.2	69.4	6.5	1040.4	96.7
	B406	953.3	88.6	67.9	6.3	1021.2	94.9
	B407	957.4	88.9	67.3	6.3	1024.6	95.2
5	B502	958.6	89.1	68.1	6.3	1026.8	95.4
	B505	971.0	90.2	69.4	6.5	1040.4	96.7
	B506	953.3	88.6	67.9	6.3	1021.2	94.9
	B507	957.4	88.9	67.3	6.3	1024.6	95.2



1. All dimensions are in imperial and metric, and measured to structural elements and exclude wall finishes and construction tolerances. 2. All materials, dimensions, and drawings are approximate only. 3. Information is subject to change without notice, at developer's absolute discretion. 4. Actual area may vary from the stated area. 5. Drawings not to scale. 6. All images used are for illustrative purposes only and do not represent the actual size, features, specifications, fittings, and furnishings. 7. The developer reserves the right to make revisions/ alterations, at its absolute discretion, without any liability whatsoever. \*Please note that landscaping and swimming pool are not provided by the developer.



1. All dimensions are in imperial and metric, and measured to structural elements and exclude wall finishes and construction tolerances. 2. All materials, dimensions, and drawings are approximate only. 3. Information is subject to change without notice, at developer's absolute discretion. 4. Actual area may vary from the stated area. 5. Drawings not to scale. 6. All images used are for illustrative purposes only and do not represent the actual size, features, specifications, fittings, and furnishings. 7. The developer reserves the right to make revisions/ alterations, at its absolute discretion, without any liability whatsoever. \*Please note that landscaping and swimming pool are not provided by the developer.



# DUBAI HILLS

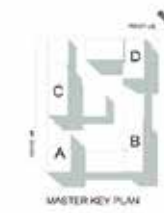
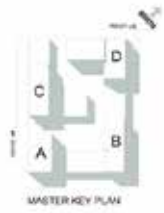
## ESTATE

### PARK POINT

# DUBAI HILLS

## ESTATE

### PARK POINT



#### 2 BEDROOM – 2.0

LEVEL	UNIT NUMBER	AREA					
		SUITE		BALCONY		TOTAL	
		Ft <sup>2</sup>	m <sup>2</sup>	Ft <sup>2</sup>	m <sup>2</sup>	Ft <sup>2</sup>	m <sup>2</sup>

#### BLOCK B

6	B602	958.6	89.1	68.1	6.3	1026.8	95.4
	B605	971.0	90.2	69.4	6.5	1040.4	96.7
	B606	953.3	88.6	67.9	6.3	1021.2	94.9
	B607	957.4	88.9	67.3	6.3	1024.6	95.2

#### BLOCK C

2	C202	956.9	88.9	67.7	6.3	1024.6	95.2
	C216	962.9	89.5	67.8	6.3	1030.8	95.8
3	C302	956.9	88.9	67.7	6.3	1024.6	95.2
	C316	962.9	89.5	67.8	6.3	1030.8	95.8
4	C402	956.9	88.9	67.7	6.3	1024.6	95.2
	C416	962.9	89.5	67.8	6.3	1030.8	95.8
5	C502	956.9	88.9	67.7	6.3	1024.6	95.2
	C516	962.9	89.5	67.8	6.3	1030.8	95.8
6	C602	956.9	88.9	67.7	6.3	1024.6	95.2
	C616	962.9	89.5	67.8	6.3	1030.8	95.8



#### 2 BEDROOM – 2.0

LEVEL	UNIT NUMBER	AREA					
		SUITE		BALCONY		TOTAL	
		Ft <sup>2</sup>	m <sup>2</sup>	Ft <sup>2</sup>	m <sup>2</sup>	Ft <sup>2</sup>	m <sup>2</sup>

#### BLOCK B

2	B212	959.9	89.2	68.4	6.4	1028.3	95.5
3	B312	959.9	89.2	68.4	6.4	1028.3	95.5
4	B412	959.9	89.2	68.4	6.4	1028.3	95.5
5	B512	959.9	89.2	68.4	6.4	1028.3	95.5
6	B612	959.9	89.2	68.4	6.4	1028.3	95.5

#### BLOCK C

2	C205	956.2	88.8	68.5	6.4	1024.6	95.2
3	C305	956.2	88.8	68.5	6.4	1024.6	95.2
4	C405	956.2	88.8	68.5	6.4	1024.6	95.2
5	C505	956.2	88.8	68.5	6.4	1024.6	95.2
6	C605	956.2	88.8	68.5	6.4	1024.6	95.2



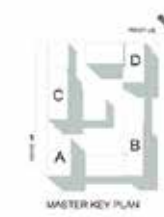
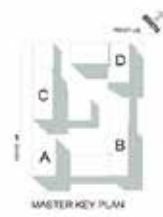
1. All dimensions are in imperial and metric, and measured to structural elements and exclude wall finishes and construction tolerances. 2. All materials, dimensions, and drawings are approximate only. 3. Information is subject to change without notice, at developer's absolute discretion. 4. Actual area may vary from the stated area. 5. Drawings not to scale. 6. All images used are for illustrative purposes only and do not represent the actual size, features, specifications, fittings, and furnishings. 7. The developer reserves the right to make revisions/ alterations, at its absolute discretion, without any liability whatsoever. \*Please note that landscaping and swimming pool are not provided by the developer.



1. All dimensions are in imperial and metric, and measured to structural elements and exclude wall finishes and construction tolerances. 2. All materials, dimensions, and drawings are approximate only. 3. Information is subject to change without notice, at developer's absolute discretion. 4. Actual area may vary from the stated area. 5. Drawings not to scale. 6. All images used are for illustrative purposes only and do not represent the actual size, features, specifications, fittings, and furnishings. 7. The developer reserves the right to make revisions/ alterations, at its absolute discretion, without any liability whatsoever. \*Please note that landscaping and swimming pool are not provided by the developer.

DUBAI HILLS  
ESTATE  
PARK POINT

DUBAI HILLS  
ESTATE  
PARK POINT



2 BEDROOM – 2.0.a

LEVEL	UNIT NUMBER	AREA					
		SUITE		BALCONY		TOTAL	
		Ft <sup>2</sup>	m <sup>2</sup>	Ft <sup>2</sup>	m <sup>2</sup>	Ft <sup>2</sup>	m <sup>2</sup>

BLOCK B

1	B102	1012.0	94.0	308.8	28.7	1320.9	122.7
	B103	1007.8	93.6	310.0	28.8	1317.8	122.4

BLOCK C

1	C111	1011.5	94.0	257.5	23.9	1269.0	117.9
---	------	--------	------	-------	------	--------	-------

BLOCK D

1	D101	1084.8	100.8	304.9	28.3	1389.7	129.1
---	------	--------	-------	-------	------	--------	-------



2 BEDROOM – 2.0.b

LEVEL	UNIT NUMBER	AREA					
		SUITE		BALCONY		TOTAL	
		Ft <sup>2</sup>	m <sup>2</sup>	Ft <sup>2</sup>	m <sup>2</sup>	Ft <sup>2</sup>	m <sup>2</sup>

BLOCK A

1	A102	1016.2	94.4	358.7	33.3	1374.9	127.7
---	------	--------	------	-------	------	--------	-------



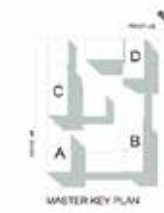
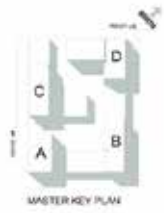
1. All dimensions are in imperial and metric, and measured to structural elements and exclude wall finishes and construction tolerances. 2. All materials, dimensions, and drawings are approximate only. 3. Information is subject to change without notice, at developer's absolute discretion. 4. Actual area may vary from the stated area. 5. Drawings not to scale. 6. All images used are for illustrative purposes only and do not represent the actual size, features, specifications, fittings, and furnishings. 7. The developer reserves the right to make revisions/ alterations, at its absolute discretion, without any liability whatsoever. \*Please note that landscaping and swimming pool are not provided by the developer.



1. All dimensions are in imperial and metric, and measured to structural elements and exclude wall finishes and construction tolerances. 2. All materials, dimensions, and drawings are approximate only. 3. Information is subject to change without notice, at developer's absolute discretion. 4. Actual area may vary from the stated area. 5. Drawings not to scale. 6. All images used are for illustrative purposes only and do not represent the actual size, features, specifications, fittings, and furnishings. 7. The developer reserves the right to make revisions/ alterations, at its absolute discretion, without any liability whatsoever. \*Please note that landscaping and swimming pool are not provided by the developer.

DUBAI HILLS  
ESTATE  
PARK POINT

DUBAI HILLS  
ESTATE  
PARK POINT



2 BEDROOM – 2.1

2 BEDROOM – 2.1.a

LEVEL	UNIT NUMBER	AREA					
		SUITE		BALCONY		TOTAL	
		Ft <sup>2</sup>	m <sup>2</sup>	Ft <sup>2</sup>	m <sup>2</sup>	Ft <sup>2</sup>	m <sup>2</sup>

LEVEL	UNIT NUMBER	AREA					
		SUITE		BALCONY		TOTAL	
		Ft <sup>2</sup>	m <sup>2</sup>	Ft <sup>2</sup>	m <sup>2</sup>	Ft <sup>2</sup>	m <sup>2</sup>

BLOCK A

BLOCK A

2	A202	1242.2	115.4	119.0	11.1	1361.2	126.5
4	A402	1242.2	115.4	119.0	11.1	1361.2	126.5
6	A602	1242.2	115.4	119.0	11.1	1361.2	126.5
8	A802	1241.8	115.4	119.0	11.1	1360.9	126.4

3	A302	1271.3	118.1	94.8	8.8	1366.2	126.9
5	A502	1271.3	118.1	94.8	8.8	1366.2	126.9
7	A702	1270.7	118.1	95.5	8.9	1366.2	126.9
9	A902	1270.3	118.0	95.5	8.9	1365.7	126.9



1. All dimensions are in imperial and metric, and measured to structural elements and exclude wall finishes and construction tolerances. 2. All materials, dimensions, and drawings are approximate only. 3. Information is subject to change without notice, at developer's absolute discretion. 4. Actual area may vary from the stated area. 5. Drawings not to scale. 6. All images used are for illustrative purposes only and do not represent the actual size, features, specifications, fittings, and furnishings. 7. The developer reserves the right to make revisions/ alterations, at its absolute discretion, without any liability whatsoever. \*Please note that landscaping and swimming pool are not provided by the developer.



1. All dimensions are in imperial and metric, and measured to structural elements and exclude wall finishes and construction tolerances. 2. All materials, dimensions, and drawings are approximate only. 3. Information is subject to change without notice, at developer's absolute discretion. 4. Actual area may vary from the stated area. 5. Drawings not to scale. 6. All images used are for illustrative purposes only and do not represent the actual size, features, specifications, fittings, and furnishings. 7. The developer reserves the right to make revisions/ alterations, at its absolute discretion, without any liability whatsoever. \*Please note that landscaping and swimming pool are not provided by the developer.

# DUBAI HILLS

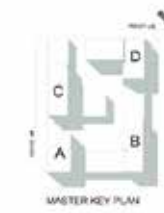
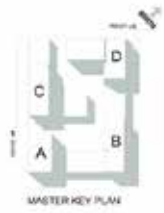
## ESTATE

### PARK POINT

# DUBAI HILLS

## ESTATE

### PARK POINT



		2 BEDROOM – 2.2					
LEVEL	UNIT NUMBER	AREA				TOTAL	
		SUITE		BALCONY		Ft <sup>2</sup>	m <sup>2</sup>
BLOCK B							
2	B201	876.1	81.4	67.2	6.2	943.2	87.6
3	B301	876.1	81.4	67.2	6.2	943.2	87.6
4	B401	876.1	81.4	67.2	6.2	943.2	87.6
5	B501	876.1	81.4	67.2	6.2	943.2	87.6
6	B601	876.1	81.4	67.2	6.2	943.2	87.6



		2 BEDROOM – 2.2					
LEVEL	UNIT NUMBER	AREA				TOTAL	
		SUITE		BALCONY		Ft <sup>2</sup>	m <sup>2</sup>
BLOCK B							
7	B704	866.3	80.5	68.4	6.4	934.6	86.8
8	B804	866.3	80.5	68.4	6.4	934.6	86.8



		BLOCK C					
LEVEL	UNIT NUMBER	SUITE		BALCONY		TOTAL	
		Ft <sup>2</sup>	m <sup>2</sup>	Ft <sup>2</sup>	m <sup>2</sup>	Ft <sup>2</sup>	m <sup>2</sup>
1	C102	869.1	80.7	67.9	6.3	937.0	87.1
2	C207	869.1	80.7	67.9	6.3	937.0	87.1
3	C307	869.1	80.7	67.9	6.3	937.0	87.1
4	C407	869.1	80.7	67.9	6.3	937.0	87.1
5	C507	869.1	80.7	67.9	6.3	937.0	87.1
6	C607	869.1	80.7	67.9	6.3	937.0	87.1
7	C702	869.9	80.8	67.9	6.3	937.9	87.1
8	C802	866.9	80.5	67.9	6.3	934.9	86.9



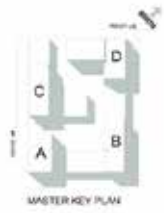
1. All dimensions are in imperial and metric, and measured to structural elements and exclude wall finishes and construction tolerances. 2. All materials, dimensions, and drawings are approximate only. 3. Information is subject to change without notice, at developer's absolute discretion. 4. Actual area may vary from the stated area. 5. Drawings not to scale. 6. All images used are for illustrative purposes only and do not represent the actual size, features, specifications, fittings, and furnishings. 7. The developer reserves the right to make revisions/ alterations, at its absolute discretion, without any liability whatsoever. \*Please note that landscaping and swimming pool are not provided by the developer.



1. All dimensions are in imperial and metric, and measured to structural elements and exclude wall finishes and construction tolerances. 2. All materials, dimensions, and drawings are approximate only. 3. Information is subject to change without notice, at developer's absolute discretion. 4. Actual area may vary from the stated area. 5. Drawings not to scale. 6. All images used are for illustrative purposes only and do not represent the actual size, features, specifications, fittings, and furnishings. 7. The developer reserves the right to make revisions/ alterations, at its absolute discretion, without any liability whatsoever. \*Please note that landscaping and swimming pool are not provided by the developer.

DUBAI HILLS  
ESTATE  
PARK POINT

DUBAI HILLS  
ESTATE  
PARK POINT



2 BEDROOM – 2.2.a

LEVEL	UNIT NUMBER	AREA					
		SUITE		BALCONY		TOTAL	
		Ft <sup>2</sup>	m <sup>2</sup>	Ft <sup>2</sup>	m <sup>2</sup>	Ft <sup>2</sup>	m <sup>2</sup>

BLOCK B

1	B101	918.6	85.3	306.0	28.4	1224.6	113.8
---	------	-------	------	-------	------	--------	-------



2 BEDROOM – 2.2.b

LEVEL	UNIT NUMBER	AREA					
		SUITE		BALCONY		TOTAL	
		Ft <sup>2</sup>	m <sup>2</sup>	Ft <sup>2</sup>	m <sup>2</sup>	Ft <sup>2</sup>	m <sup>2</sup>

BLOCK D

1	D106	927.5	86.2	69.8	6.5	997.3	92.7
2	D207	928.5	86.3	69.5	6.5	998.0	92.7
3	D307	928.5	86.3	69.5	6.5	998.0	92.7
4	D407	928.5	86.3	69.5	6.5	998.0	92.7
5	D507	928.5	86.3	69.5	6.5	998.0	92.7
6	D607	928.5	86.3	69.5	6.5	998.0	92.7
7	D706	928.9	86.3	69.5	6.5	998.5	92.8
8	D806	928.9	86.3	69.5	6.5	998.5	92.8



1. All dimensions are in imperial and metric, and measured to structural elements and exclude wall finishes and construction tolerances. 2. All materials, dimensions, and drawings are approximate only. 3. Information is subject to change without notice, at developer's absolute discretion. 4. Actual area may vary from the stated area. 5. Drawings not to scale. 6. All images used are for illustrative purposes only and do not represent the actual size, features, specifications, fittings, and furnishings. 7. The developer reserves the right to make revisions/ alterations, at its absolute discretion, without any liability whatsoever. \*Please note that landscaping and swimming pool are not provided by the developer.



1. All dimensions are in imperial and metric, and measured to structural elements and exclude wall finishes and construction tolerances. 2. All materials, dimensions, and drawings are approximate only. 3. Information is subject to change without notice, at developer's absolute discretion. 4. Actual area may vary from the stated area. 5. Drawings not to scale. 6. All images used are for illustrative purposes only and do not represent the actual size, features, specifications, fittings, and furnishings. 7. The developer reserves the right to make revisions/ alterations, at its absolute discretion, without any liability whatsoever. \*Please note that landscaping and swimming pool are not provided by the developer.

# DUBAI HILLS

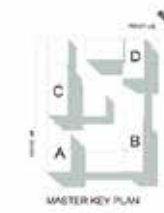
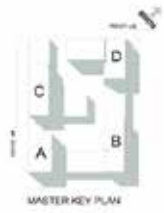
## ESTATE

### PARK POINT

# DUBAI HILLS

## ESTATE

### PARK POINT



#### 2 BEDROOM – 2.3

LEVEL	UNIT NUMBER	AREA					
		SUITE		BALCONY		TOTAL	
		Ft <sup>2</sup>	m <sup>2</sup>	Ft <sup>2</sup>	m <sup>2</sup>	Ft <sup>2</sup>	m <sup>2</sup>

#### BLOCK C

2	C206	1040.7	96.7	93.1	8.7	1133.8	105.3
3	C306	1040.7	96.7	93.1	8.7	1133.8	105.3
4	C406	1040.7	96.7	93.1	8.7	1133.8	105.3
5	C506	1040.7	96.7	93.1	8.7	1133.8	105.3
6	C606	1040.7	96.7	93.1	8.7	1133.8	105.3



#### 2 BEDROOM – 2.4

LEVEL	UNIT NUMBER	AREA					
		SUITE		BALCONY		TOTAL	
		Ft <sup>2</sup>	m <sup>2</sup>	Ft <sup>2</sup>	m <sup>2</sup>	Ft <sup>2</sup>	m <sup>2</sup>

#### BLOCK A

2	A206	957.2	88.9	57.4	5.3	1014.6	94.3
3	A306	957.2	88.9	57.4	5.3	1014.6	94.3
4	A406	957.2	88.9	57.4	5.3	1014.6	94.3
5	A506	957.2	88.9	57.4	5.3	1014.6	94.3
6	A606	957.2	88.9	57.4	5.3	1014.6	94.3
7	A706	957.2	88.9	57.4	5.3	1014.6	94.3
8	A806	957.2	88.9	57.4	5.3	1014.6	94.3
9	A905	957.2	88.9	57.4	5.3	1014.6	94.3



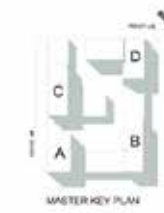
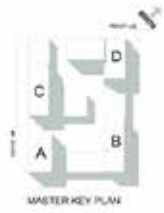
1. All dimensions are in imperial and metric, and measured to structural elements and exclude wall finishes and construction tolerances. 2. All materials, dimensions, and drawings are approximate only. 3. Information is subject to change without notice, at developer's absolute discretion. 4. Actual area may vary from the stated area. 5. Drawings not to scale. 6. All images used are for illustrative purposes only and do not represent the actual size, features, specifications, fittings, and furnishings. 7. The developer reserves the right to make revisions/ alterations, at its absolute discretion, without any liability whatsoever. \*Please note that landscaping and swimming pool are not provided by the developer.



1. All dimensions are in imperial and metric, and measured to structural elements and exclude wall finishes and construction tolerances. 2. All materials, dimensions, and drawings are approximate only. 3. Information is subject to change without notice, at developer's absolute discretion. 4. Actual area may vary from the stated area. 5. Drawings not to scale. 6. All images used are for illustrative purposes only and do not represent the actual size, features, specifications, fittings, and furnishings. 7. The developer reserves the right to make revisions/ alterations, at its absolute discretion, without any liability whatsoever. \*Please note that landscaping and swimming pool are not provided by the developer.

DUBAI HILLS  
ESTATE  
PARK POINT

DUBAI HILLS  
ESTATE  
PARK POINT



2 BEDROOM – 2.4

LEVEL	UNIT NUMBER	AREA				TOTAL	
		SUITE		BALCONY		Ft <sup>2</sup>	m <sup>2</sup>

BLOCK B

2	B203	963.3	89.5	67.7	6.3	1031.0	95.8
3	B303	963.8	89.5	67.7	6.3	1031.5	95.8
4	B403	963.3	89.5	67.7	6.3	1031.0	95.8
5	B503	963.8	89.5	67.7	6.3	1031.5	95.8
6	B603	963.3	89.5	67.7	6.3	1031.0	95.8



2 BEDROOM – 2.4.a

LEVEL	UNIT NUMBER	AREA				TOTAL	
		SUITE		BALCONY		Ft <sup>2</sup>	m <sup>2</sup>

BLOCK D

7	D701	1015.0	94.3	73.2	6.8	1088.2	101.1
8	D801	1015.0	94.3	73.2	6.8	1088.2	101.1



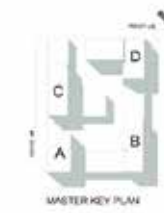
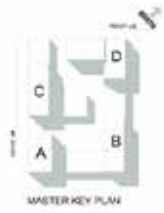
1. All dimensions are in imperial and metric, and measured to structural elements and exclude wall finishes and construction tolerances. 2. All materials, dimensions, and drawings are approximate only. 3. Information is subject to change without notice, at developer's absolute discretion. 4. Actual area may vary from the stated area. 5. Drawings not to scale. 6. All images used are for illustrative purposes only and do not represent the actual size, features, specifications, fittings, and furnishings. 7. The developer reserves the right to make revisions/ alterations, at its absolute discretion, without any liability whatsoever. \*Please note that landscaping and swimming pool are not provided by the developer.



1. All dimensions are in imperial and metric, and measured to structural elements and exclude wall finishes and construction tolerances. 2. All materials, dimensions, and drawings are approximate only. 3. Information is subject to change without notice, at developer's absolute discretion. 4. Actual area may vary from the stated area. 5. Drawings not to scale. 6. All images used are for illustrative purposes only and do not represent the actual size, features, specifications, fittings, and furnishings. 7. The developer reserves the right to make revisions/ alterations, at its absolute discretion, without any liability whatsoever. \*Please note that landscaping and swimming pool are not provided by the developer.

DUBAI HILLS  
ESTATE  
PARK POINT

DUBAI HILLS  
ESTATE  
PARK POINT



2 BEDROOM – 2.5

2 BEDROOM – 2.5.a

LEVEL	UNIT NUMBER	AREA					
		SUITE		BALCONY		TOTAL	
		Ft <sup>2</sup>	m <sup>2</sup>	Ft <sup>2</sup>	m <sup>2</sup>	Ft <sup>2</sup>	m <sup>2</sup>

LEVEL	UNIT NUMBER	AREA					
		SUITE		BALCONY		TOTAL	
		Ft <sup>2</sup>	m <sup>2</sup>	Ft <sup>2</sup>	m <sup>2</sup>	Ft <sup>2</sup>	m <sup>2</sup>

BLOCK D

BLOCK D

2	D210	1136.4	105.6	77.4	7.2	1213.7	112.8
3	D310	1136.4	105.6	77.4	7.2	1213.7	112.8
4	D410	1136.4	105.6	77.4	7.2	1213.7	112.8
5	D510	1136.4	105.6	77.4	7.2	1213.7	112.8
6	D610	1136.4	105.6	77.4	7.2	1213.7	112.8

7	D709	1135.7	105.5	77.4	7.2	1213.1	112.7
8	D809	1135.7	105.5	77.4	7.2	1213.1	112.7





# DUBAI HILLS

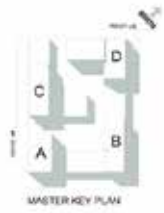
## ESTATE

### PARK POINT

# DUBAI HILLS

## ESTATE

### PARK POINT

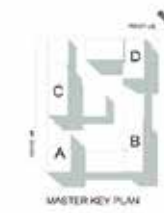


#### 2 BEDROOM – 2.5.b

LEVEL	UNIT NUMBER	AREA					
		SUITE		BALCONY		TOTAL	
		Ft <sup>2</sup>	m <sup>2</sup>	Ft <sup>2</sup>	m <sup>2</sup>	Ft <sup>2</sup>	m <sup>2</sup>

#### BLOCK D

1	D109	1227.2	114.0	541.1	50.3	1768.3	164.3
---	------	--------	-------	-------	------	--------	-------



#### 2 BEDROOM – 2.6

LEVEL	UNIT NUMBER	AREA					
		SUITE		BALCONY		TOTAL	
		Ft <sup>2</sup>	m <sup>2</sup>	Ft <sup>2</sup>	m <sup>2</sup>	Ft <sup>2</sup>	m <sup>2</sup>

#### BLOCK D

7	D702	948.2	88.1	146.4	13.6	1094.6	101.7
8	D802	948.5	88.1	146.4	13.6	1094.9	101.7



1. All dimensions are in imperial and metric, and measured to structural elements and exclude wall finishes and construction tolerances. 2. All materials, dimensions, and drawings are approximate only. 3. Information is subject to change without notice, at developer's absolute discretion. 4. Actual area may vary from the stated area. 5. Drawings not to scale. 6. All images used are for illustrative purposes only and do not represent the actual size, features, specifications, fittings, and furnishings. 7. The developer reserves the right to make revisions/ alterations, at its absolute discretion, without any liability whatsoever. \*Please note that landscaping and swimming pool are not provided by the developer.



1. All dimensions are in imperial and metric, and measured to structural elements and exclude wall finishes and construction tolerances. 2. All materials, dimensions, and drawings are approximate only. 3. Information is subject to change without notice, at developer's absolute discretion. 4. Actual area may vary from the stated area. 5. Drawings not to scale. 6. All images used are for illustrative purposes only and do not represent the actual size, features, specifications, fittings, and furnishings. 7. The developer reserves the right to make revisions/ alterations, at its absolute discretion, without any liability whatsoever. \*Please note that landscaping and swimming pool are not provided by the developer.

# DUBAI HILLS

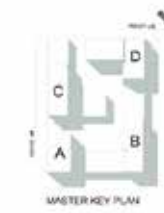
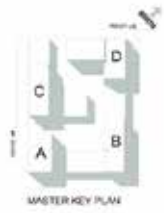
## ESTATE

### PARK POINT

# DUBAI HILLS

## ESTATE

### PARK POINT



#### 3 BEDROOM – 3.0

LEVEL	UNIT NUMBER	AREA					
		SUITE		BALCONY		TOTAL	
		Ft <sup>2</sup>	m <sup>2</sup>	Ft <sup>2</sup>	m <sup>2</sup>	Ft <sup>2</sup>	m <sup>2</sup>

#### BLOCK D

2	D204	1588.8	147.6	60.4	5.6	1649.2	153.2
3	D304	1588.8	147.6	60.4	5.6	1649.2	153.2
4	D404	1588.8	147.6	60.4	5.6	1649.2	153.2
5	D504	1588.8	147.6	60.4	5.6	1649.2	153.2
6	D604	1588.8	147.6	60.4	5.6	1649.2	153.2



#### 3 BEDROOM – 3.0.a

LEVEL	UNIT NUMBER	AREA					
		SUITE		BALCONY		TOTAL	
		Ft <sup>2</sup>	m <sup>2</sup>	Ft <sup>2</sup>	m <sup>2</sup>	Ft <sup>2</sup>	m <sup>2</sup>

#### BLOCK D

1	D103	1658.4	154.1	601.4	55.9	2259.8	209.9
---	------	--------	-------	-------	------	--------	-------



1. All dimensions are in imperial and metric, and measured to structural elements and exclude wall finishes and construction tolerances. 2. All materials, dimensions, and drawings are approximate only. 3. Information is subject to change without notice, at developer's absolute discretion. 4. Actual area may vary from the stated area. 5. Drawings not to scale. 6. All images used are for illustrative purposes only and do not represent the actual size, features, specifications, fittings, and furnishings. 7. The developer reserves the right to make revisions/ alterations, at its absolute discretion, without any liability whatsoever. \*Please note that landscaping and swimming pool are not provided by the developer.



1. All dimensions are in imperial and metric, and measured to structural elements and exclude wall finishes and construction tolerances. 2. All materials, dimensions, and drawings are approximate only. 3. Information is subject to change without notice, at developer's absolute discretion. 4. Actual area may vary from the stated area. 5. Drawings not to scale. 6. All images used are for illustrative purposes only and do not represent the actual size, features, specifications, fittings, and furnishings. 7. The developer reserves the right to make revisions/ alterations, at its absolute discretion, without any liability whatsoever. \*Please note that landscaping and swimming pool are not provided by the developer.

# DUBAI HILLS

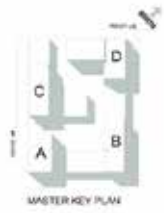
## ESTATE

### PARK POINT

# DUBAI HILLS

## ESTATE

### PARK POINT

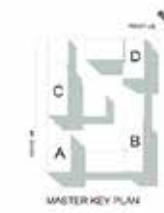


#### 3 BEDROOM – 3.0.b

LEVEL	UNIT NUMBER	AREA					
		SUITE		BALCONY		TOTAL	
		Ft <sup>2</sup>	m <sup>2</sup>	Ft <sup>2</sup>	m <sup>2</sup>	Ft <sup>2</sup>	m <sup>2</sup>

#### BLOCK D

7	D703	1589.6	147.7	59.5	5.5	1649.2	153.2
8	D803	1589.6	147.7	59.5	5.5	1649.2	153.2



#### 3 BEDROOM – 3.0.c

LEVEL	UNIT NUMBER	AREA					
		SUITE		BALCONY		TOTAL	
		Ft <sup>2</sup>	m <sup>2</sup>	Ft <sup>2</sup>	m <sup>2</sup>	Ft <sup>2</sup>	m <sup>2</sup>

#### BLOCK B

2	B204	1490.9	138.5	113.2	10.5	1604.2	149.0
	B211	1501.9	139.5	113.2	10.5	1615.1	150.1
3	B304	1490.9	138.5	113.2	10.5	1604.2	149.0
	B311	1501.9	139.5	113.2	10.5	1615.1	150.1
4	B404	1490.9	138.5	113.2	10.5	1604.2	149.0
	B411	1501.9	139.5	113.2	10.5	1615.1	150.1
5	B504	1490.9	138.5	113.2	10.5	1604.2	149.0
	B511	1501.9	139.5	113.2	10.5	1615.1	150.1
6	B604	1490.9	138.5	113.2	10.5	1604.2	149.0
	B611	1501.9	139.5	113.2	10.5	1615.1	150.1



1. All dimensions are in imperial and metric, and measured to structural elements and exclude wall finishes and construction tolerances. 2. All materials, dimensions, and drawings are approximate only. 3. Information is subject to change without notice, at developer's absolute discretion. 4. Actual area may vary from the stated area. 5. Drawings not to scale. 6. All images used are for illustrative purposes only and do not represent the actual size, features, specifications, fittings, and furnishings. 7. The developer reserves the right to make revisions/ alterations, at its absolute discretion, without any liability whatsoever. \*Please note that landscaping and swimming pool are not provided by the developer.



1. All dimensions are in imperial and metric, and measured to structural elements and exclude wall finishes and construction tolerances. 2. All materials, dimensions, and drawings are approximate only. 3. Information is subject to change without notice, at developer's absolute discretion. 4. Actual area may vary from the stated area. 5. Drawings not to scale. 6. All images used are for illustrative purposes only and do not represent the actual size, features, specifications, fittings, and furnishings. 7. The developer reserves the right to make revisions/ alterations, at its absolute discretion, without any liability whatsoever. \*Please note that landscaping and swimming pool are not provided by the developer.

# DUBAI HILLS

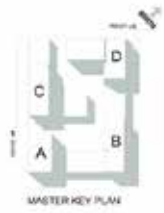
## ESTATE

### PARK POINT

# DUBAI HILLS

## ESTATE

### PARK POINT

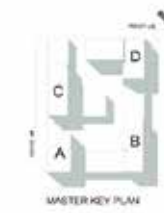


#### 3 BEDROOM – 3.0.c

LEVEL	UNIT NUMBER	AREA				TOTAL	
		SUITE		BALCONY		Ft <sup>2</sup>	m <sup>2</sup>
		Ft <sup>2</sup>	m <sup>2</sup>	Ft <sup>2</sup>	m <sup>2</sup>		

#### BLOCK C

2	C203	1491.8	138.6	113.2	10.5	1605.0	149.1
	C212	1501.1	139.5	118.3	11.0	1619.4	150.5
3	C303	1491.8	138.6	113.2	10.5	1605.0	149.1
	C312	1501.1	139.5	112.9	10.5	1614.1	150.0
4	C403	1491.8	138.6	113.2	10.5	1605.0	149.1
	C412	1501.1	139.5	118.3	11.0	1619.4	150.5
5	C503	1491.8	138.6	113.2	10.5	1605.0	149.1
	C512	1501.1	139.5	112.9	10.5	1614.1	150.0
6	C603	1491.8	138.6	113.2	10.5	1605.0	149.1
	C612	1501.1	139.5	118.3	11.0	1619.4	150.5



#### 3 BEDROOM – 3.0.d

LEVEL	UNIT NUMBER	AREA				TOTAL	
		SUITE		BALCONY		Ft <sup>2</sup>	m <sup>2</sup>
		Ft <sup>2</sup>	m <sup>2</sup>	Ft <sup>2</sup>	m <sup>2</sup>		

#### BLOCK B

1	B104	1535.7	142.7	389.7	36.2	1925.4	178.9
---	------	--------	-------	-------	------	--------	-------



1. All dimensions are in imperial and metric, and measured to structural elements and exclude wall finishes and construction tolerances. 2. All materials, dimensions, and drawings are approximate only. 3. Information is subject to change without notice, at developer's absolute discretion. 4. Actual area may vary from the stated area. 5. Drawings not to scale. 6. All images used are for illustrative purposes only and do not represent the actual size, features, specifications, fittings, and furnishings. 7. The developer reserves the right to make revisions/ alterations, at its absolute discretion, without any liability whatsoever. \*Please note that landscaping and swimming pool are not provided by the developer.



1. All dimensions are in imperial and metric, and measured to structural elements and exclude wall finishes and construction tolerances. 2. All materials, dimensions, and drawings are approximate only. 3. Information is subject to change without notice, at developer's absolute discretion. 4. Actual area may vary from the stated area. 5. Drawings not to scale. 6. All images used are for illustrative purposes only and do not represent the actual size, features, specifications, fittings, and furnishings. 7. The developer reserves the right to make revisions/ alterations, at its absolute discretion, without any liability whatsoever. \*Please note that landscaping and swimming pool are not provided by the developer.

# DUBAI HILLS

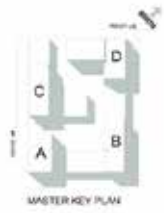
## ESTATE

### PARK POINT

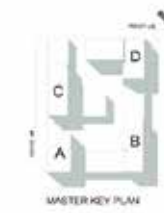
# DUBAI HILLS

## ESTATE

### PARK POINT



3 BEDROOM – 3.0.e							
LEVEL	UNIT NUMBER	AREA					
		SUITE		BALCONY		TOTAL	
		Ft <sup>2</sup>	m <sup>2</sup>	Ft <sup>2</sup>	m <sup>2</sup>	Ft <sup>2</sup>	m <sup>2</sup>
BLOCK C							
1	C107	1536.0	142.7	246.7	22.9	1782.7	165.6



3 BEDROOM – 3.0.f							
LEVEL	UNIT NUMBER	AREA					
		SUITE		BALCONY		TOTAL	
		Ft <sup>2</sup>	m <sup>2</sup>	Ft <sup>2</sup>	m <sup>2</sup>	Ft <sup>2</sup>	m <sup>2</sup>
BLOCK B							
1	B111	1501.3	139.5	594.2	55.2	2095.4	194.7



1. All dimensions are in imperial and metric, and measured to structural elements and exclude wall finishes and construction tolerances. 2. All materials, dimensions, and drawings are approximate only. 3. Information is subject to change without notice, at developer's absolute discretion. 4. Actual area may vary from the stated area. 5. Drawings not to scale. 6. All images used are for illustrative purposes only and do not represent the actual size, features, specifications, fittings, and furnishings. 7. The developer reserves the right to make revisions/ alterations, at its absolute discretion, without any liability whatsoever. \*Please note that landscaping and swimming pool are not provided by the developer.



1. All dimensions are in imperial and metric, and measured to structural elements and exclude wall finishes and construction tolerances. 2. All materials, dimensions, and drawings are approximate only. 3. Information is subject to change without notice, at developer's absolute discretion. 4. Actual area may vary from the stated area. 5. Drawings not to scale. 6. All images used are for illustrative purposes only and do not represent the actual size, features, specifications, fittings, and furnishings. 7. The developer reserves the right to make revisions/ alterations, at its absolute discretion, without any liability whatsoever. \*Please note that landscaping and swimming pool are not provided by the developer.

# DUBAI HILLS

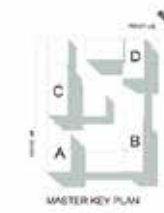
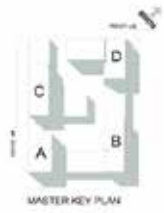
## ESTATE

### PARK POINT

# DUBAI HILLS

## ESTATE

### PARK POINT



#### 3 BEDROOM – 3.1

LEVEL	UNIT NUMBER	AREA					
		SUITE		BALCONY		TOTAL	
		Ft <sup>2</sup>	m <sup>2</sup>	Ft <sup>2</sup>	m <sup>2</sup>	Ft <sup>2</sup>	m <sup>2</sup>

#### BLOCK D

2	D209	1526.3	141.8	76.6	7.1	1603.0	148.9
3	D309	1526.3	141.8	76.6	7.1	1603.0	148.9
4	D409	1526.3	141.8	76.6	7.1	1603.0	148.9
5	D509	1526.3	141.8	76.6	7.1	1603.0	148.9
6	D609	1526.3	141.8	76.6	7.1	1603.0	148.9
7	D708	1526.3	141.8	76.6	7.1	1603.0	148.9
8	D808	1526.3	141.8	76.6	7.1	1603.0	148.9



#### 3 BEDROOM – 3.1.a

LEVEL	UNIT NUMBER	AREA					
		SUITE		BALCONY		TOTAL	
		Ft <sup>2</sup>	m <sup>2</sup>	Ft <sup>2</sup>	m <sup>2</sup>	Ft <sup>2</sup>	m <sup>2</sup>

#### BLOCK D

1	D108	1526.3	141.8	288.2	26.8	1814.5	168.6
---	------	--------	-------	-------	------	--------	-------



1. All dimensions are in imperial and metric, and measured to structural elements and exclude wall finishes and construction tolerances. 2. All materials, dimensions, and drawings are approximate only. 3. Information is subject to change without notice, at developer's absolute discretion. 4. Actual area may vary from the stated area. 5. Drawings not to scale. 6. All images used are for illustrative purposes only and do not represent the actual size, features, specifications, fittings, and furnishings. 7. The developer reserves the right to make revisions/ alterations, at its absolute discretion, without any liability whatsoever. \*Please note that landscaping and swimming pool are not provided by the developer.



1. All dimensions are in imperial and metric, and measured to structural elements and exclude wall finishes and construction tolerances. 2. All materials, dimensions, and drawings are approximate only. 3. Information is subject to change without notice, at developer's absolute discretion. 4. Actual area may vary from the stated area. 5. Drawings not to scale. 6. All images used are for illustrative purposes only and do not represent the actual size, features, specifications, fittings, and furnishings. 7. The developer reserves the right to make revisions/ alterations, at its absolute discretion, without any liability whatsoever. \*Please note that landscaping and swimming pool are not provided by the developer.

# DUBAI HILLS

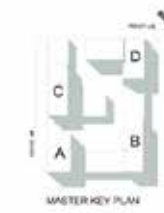
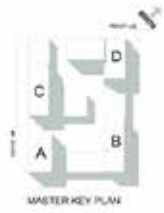
## ESTATE

### PARK POINT

# DUBAI HILLS

## ESTATE

### PARK POINT



#### 3 BEDROOM – 3.2

LEVEL	UNIT NUMBER	AREA					
		SUITE		BALCONY		TOTAL	
		Ft <sup>2</sup>	m <sup>2</sup>	Ft <sup>2</sup>	m <sup>2</sup>	Ft <sup>2</sup>	m <sup>2</sup>

#### BLOCK B

1	B110	1298.6	120.6	74.6	6.9	1373.2	127.6
2	B210	1298.6	120.6	74.4	6.9	1372.9	127.6
3	B310	1298.6	120.6	74.4	6.9	1372.9	127.6
4	B410	1298.6	120.6	74.4	6.9	1372.9	127.6
5	B510	1298.6	120.6	74.4	6.9	1372.9	127.6
6	B610	1298.6	120.6	74.4	6.9	1372.9	127.6

#### BLOCK C

2	C204	1303.3	121.1	75.1	7.0	1378.4	128.1
3	C304	1303.3	121.1	75.1	7.0	1378.4	128.1
4	C404	1303.3	121.1	75.1	7.0	1378.4	128.1
5	C504	1303.3	121.1	75.1	7.0	1378.4	128.1
6	C604	1303.3	121.1	75.1	7.0	1378.4	128.1



#### 3 BEDROOM – 3.2.a

LEVEL	UNIT NUMBER	AREA					
		SUITE		BALCONY		TOTAL	
		Ft <sup>2</sup>	m <sup>2</sup>	Ft <sup>2</sup>	m <sup>2</sup>	Ft <sup>2</sup>	m <sup>2</sup>

#### BLOCK B

1	B112	1347.0	125.1	361.9	33.6	1708.9	158.8
---	------	--------	-------	-------	------	--------	-------



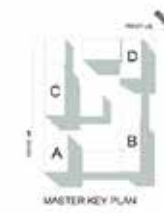
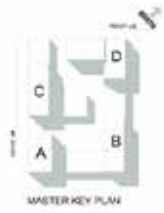
1. All dimensions are in imperial and metric, and measured to structural elements and exclude wall finishes and construction tolerances. 2. All materials, dimensions, and drawings are approximate only. 3. Information is subject to change without notice, at developer's absolute discretion. 4. Actual area may vary from the stated area. 5. Drawings not to scale. 6. All images used are for illustrative purposes only and do not represent the actual size, features, specifications, fittings, and furnishings. 7. The developer reserves the right to make revisions/ alterations, at its absolute discretion, without any liability whatsoever. \*Please note that landscaping and swimming pool are not provided by the developer.



1. All dimensions are in imperial and metric, and measured to structural elements and exclude wall finishes and construction tolerances. 2. All materials, dimensions, and drawings are approximate only. 3. Information is subject to change without notice, at developer's absolute discretion. 4. Actual area may vary from the stated area. 5. Drawings not to scale. 6. All images used are for illustrative purposes only and do not represent the actual size, features, specifications, fittings, and furnishings. 7. The developer reserves the right to make revisions/ alterations, at its absolute discretion, without any liability whatsoever. \*Please note that landscaping and swimming pool are not provided by the developer.

DUBAI HILLS  
ESTATE  
PARK POINT

DUBAI HILLS  
ESTATE  
PARK POINT



3 BEDROOM – 3.2.b

3 BEDROOM – 3.3

LEVEL	UNIT NUMBER	AREA					
		SUITE		BALCONY		TOTAL	
		Ft <sup>2</sup>	m <sup>2</sup>	Ft <sup>2</sup>	m <sup>2</sup>	Ft <sup>2</sup>	m <sup>2</sup>

LEVEL	UNIT NUMBER	AREA					
		SUITE		BALCONY		TOTAL	
		Ft <sup>2</sup>	m <sup>2</sup>	Ft <sup>2</sup>	m <sup>2</sup>	Ft <sup>2</sup>	m <sup>2</sup>

BLOCK B

BLOCK A

1	B108	1398.1	129.9	79.2	7.4	1477.4	137.3
2	B208	1398.2	129.9	79.2	7.4	1477.5	137.3
3	B308	1398.2	129.9	79.2	7.4	1477.5	137.3
4	B408	1398.2	129.9	79.2	7.4	1477.5	137.3
5	B508	1398.2	129.9	79.2	7.4	1477.5	137.3
6	B608	1398.2	129.9	79.2	7.4	1477.5	137.3

1	A101	1207.6	112.2	145.0	13.5	1352.6	125.7
---	------	--------	-------	-------	------	--------	-------



1. All dimensions are in imperial and metric, and measured to structural elements and exclude wall finishes and construction tolerances. 2. All materials, dimensions, and drawings are approximate only. 3. Information is subject to change without notice, at developer's absolute discretion. 4. Actual area may vary from the stated area. 5. Drawings not to scale. 6. All images used are for illustrative purposes only and do not represent the actual size, features, specifications, fittings, and furnishings. 7. The developer reserves the right to make revisions/ alterations, at its absolute discretion, without any liability whatsoever. \*Please note that landscaping and swimming pool are not provided by the developer.



1. All dimensions are in imperial and metric, and measured to structural elements and exclude wall finishes and construction tolerances. 2. All materials, dimensions, and drawings are approximate only. 3. Information is subject to change without notice, at developer's absolute discretion. 4. Actual area may vary from the stated area. 5. Drawings not to scale. 6. All images used are for illustrative purposes only and do not represent the actual size, features, specifications, fittings, and furnishings. 7. The developer reserves the right to make revisions/ alterations, at its absolute discretion, without any liability whatsoever. \*Please note that landscaping and swimming pool are not provided by the developer.



# DUBAI HILLS

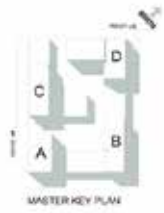
## ESTATE

### PARK POINT

# DUBAI HILLS

## ESTATE

### PARK POINT

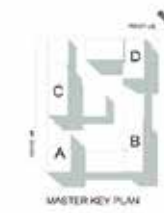


#### 3 BEDROOM – 3.3.a

LEVEL	UNIT NUMBER	AREA					
		SUITE		BALCONY		TOTAL	
		Ft <sup>2</sup>	m <sup>2</sup>	Ft <sup>2</sup>	m <sup>2</sup>	Ft <sup>2</sup>	m <sup>2</sup>

#### BLOCK C

7	C706	1189.3	110.5	137.0	12.7	1326.3	123.2
8	C806	1189.3	110.5	137.0	12.7	1326.3	123.2



#### 3 BEDROOM – 3.4

LEVEL	UNIT NUMBER	AREA					
		SUITE		BALCONY		TOTAL	
		Ft <sup>2</sup>	m <sup>2</sup>	Ft <sup>2</sup>	m <sup>2</sup>	Ft <sup>2</sup>	m <sup>2</sup>

#### BLOCK A

3	A303	1487.4	138.2	80.4	7.5	1567.8	145.7
5	A503	1487.4	138.2	80.4	7.5	1567.8	145.7
7	A703	1487.4	138.2	80.4	7.5	1567.8	145.7



1. All dimensions are in imperial and metric, and measured to structural elements and exclude wall finishes and construction tolerances. 2. All materials, dimensions, and drawings are approximate only. 3. Information is subject to change without notice, at developer's absolute discretion. 4. Actual area may vary from the stated area. 5. Drawings not to scale. 6. All images used are for illustrative purposes only and do not represent the actual size, features, specifications, fittings, and furnishings. 7. The developer reserves the right to make revisions/ alterations, at its absolute discretion, without any liability whatsoever. \*Please note that landscaping and swimming pool are not provided by the developer.



1. All dimensions are in imperial and metric, and measured to structural elements and exclude wall finishes and construction tolerances. 2. All materials, dimensions, and drawings are approximate only. 3. Information is subject to change without notice, at developer's absolute discretion. 4. Actual area may vary from the stated area. 5. Drawings not to scale. 6. All images used are for illustrative purposes only and do not represent the actual size, features, specifications, fittings, and furnishings. 7. The developer reserves the right to make revisions/ alterations, at its absolute discretion, without any liability whatsoever. \*Please note that landscaping and swimming pool are not provided by the developer.

# DUBAI HILLS

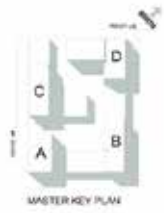
## ESTATE

### PARK POINT

# DUBAI HILLS

## ESTATE

### PARK POINT

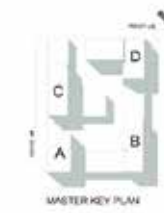


#### 3 BEDROOM – 3.4.a

LEVEL	UNIT NUMBER	AREA				TOTAL	
		SUITE		BALCONY		Ft <sup>2</sup>	m <sup>2</sup>
		Ft <sup>2</sup>	m <sup>2</sup>	Ft <sup>2</sup>	m <sup>2</sup>		

#### BLOCK A

2	A203	1486.7	138.1	80.4	7.5	1567.1	145.6
4	A403	1486.7	138.1	80.4	7.5	1567.1	145.6
6	A603	1486.7	138.1	80.4	7.5	1567.1	145.6



#### 3 BEDROOM – 3.5

LEVEL	UNIT NUMBER	AREA				TOTAL	
		SUITE		BALCONY		Ft <sup>2</sup>	m <sup>2</sup>
		Ft <sup>2</sup>	m <sup>2</sup>	Ft <sup>2</sup>	m <sup>2</sup>		

#### BLOCK C

7	C701	1350.2	125.4	158.8	14.8	1509.0	140.2
---	------	--------	-------	-------	------	--------	-------



1. All dimensions are in imperial and metric, and measured to structural elements and exclude wall finishes and construction tolerances. 2. All materials, dimensions, and drawings are approximate only. 3. Information is subject to change without notice, at developer's absolute discretion. 4. Actual area may vary from the stated area. 5. Drawings not to scale. 6. All images used are for illustrative purposes only and do not represent the actual size, features, specifications, fittings, and furnishings. 7. The developer reserves the right to make revisions/ alterations, at its absolute discretion, without any liability whatsoever. \*Please note that landscaping and swimming pool are not provided by the developer.



1. All dimensions are in imperial and metric, and measured to structural elements and exclude wall finishes and construction tolerances. 2. All materials, dimensions, and drawings are approximate only. 3. Information is subject to change without notice, at developer's absolute discretion. 4. Actual area may vary from the stated area. 5. Drawings not to scale. 6. All images used are for illustrative purposes only and do not represent the actual size, features, specifications, fittings, and furnishings. 7. The developer reserves the right to make revisions/ alterations, at its absolute discretion, without any liability whatsoever. \*Please note that landscaping and swimming pool are not provided by the developer.

# DUBAI HILLS

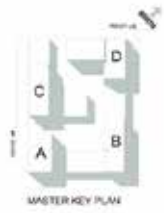
## ESTATE

### PARK POINT

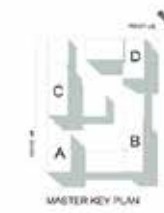
# DUBAI HILLS

## ESTATE

### PARK POINT



3 BEDROOM – 3.5.a		AREA					
LEVEL	UNIT NUMBER	SUITE		BALCONY		TOTAL	
		Ft <sup>2</sup>	m <sup>2</sup>	Ft <sup>2</sup>	m <sup>2</sup>	Ft <sup>2</sup>	m <sup>2</sup>
BLOCK C							
1	C101	1406.6	130.7	471.1	43.8	1877.8	174.5



3 BEDROOM – 3.5.b		AREA					
LEVEL	UNIT NUMBER	SUITE		BALCONY		TOTAL	
		Ft <sup>2</sup>	m <sup>2</sup>	Ft <sup>2</sup>	m <sup>2</sup>	Ft <sup>2</sup>	m <sup>2</sup>
BLOCK C							
8	C801	1350.2	125.4	158.9	14.8	1509.1	140.2



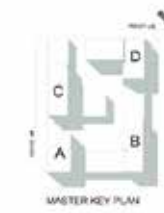
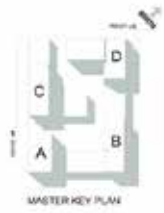
1. All dimensions are in imperial and metric, and measured to structural elements and exclude wall finishes and construction tolerances. 2. All materials, dimensions, and drawings are approximate only. 3. Information is subject to change without notice, at developer's absolute discretion. 4. Actual area may vary from the stated area. 5. Drawings not to scale. 6. All images used are for illustrative purposes only and do not represent the actual size, features, specifications, fittings, and furnishings. 7. The developer reserves the right to make revisions/ alterations, at its absolute discretion, without any liability whatsoever. \*Please note that landscaping and swimming pool are not provided by the developer.



1. All dimensions are in imperial and metric, and measured to structural elements and exclude wall finishes and construction tolerances. 2. All materials, dimensions, and drawings are approximate only. 3. Information is subject to change without notice, at developer's absolute discretion. 4. Actual area may vary from the stated area. 5. Drawings not to scale. 6. All images used are for illustrative purposes only and do not represent the actual size, features, specifications, fittings, and furnishings. 7. The developer reserves the right to make revisions/ alterations, at its absolute discretion, without any liability whatsoever. \*Please note that landscaping and swimming pool are not provided by the developer.

DUBAI HILLS  
ESTATE  
PARK POINT

DUBAI HILLS  
ESTATE  
PARK POINT



3 BEDROOM – 3.6

LEVEL	UNIT NUMBER	AREA					
		SUITE		BALCONY		TOTAL	
		Ft <sup>2</sup>	m <sup>2</sup>	Ft <sup>2</sup>	m <sup>2</sup>	Ft <sup>2</sup>	m <sup>2</sup>

BLOCK B

7	B701	1176.4	109.3	66.8	6.2	1243.2	115.5
8	B801	1176.4	109.3	66.8	6.2	1243.2	115.5



3 BEDROOM – 3.7

LEVEL	UNIT NUMBER	AREA					
		SUITE		BALCONY		TOTAL	
		Ft <sup>2</sup>	m <sup>2</sup>	Ft <sup>2</sup>	m <sup>2</sup>	Ft <sup>2</sup>	m <sup>2</sup>

BLOCK D

1	D107	1459.5	135.6	164.9	15.3	1624.4	150.9
2	D208	1459.8	135.6	148.9	13.8	1608.7	149.5
3	D308	1459.8	135.6	148.9	13.8	1608.7	149.5
4	D408	1459.8	135.6	148.9	13.8	1608.7	149.5
5	D508	1459.8	135.6	148.9	13.8	1608.7	149.5
6	D608	1459.8	135.6	148.9	13.8	1608.7	149.5
7	D707	1459.7	135.6	148.8	13.8	1608.5	149.4
8	D807	1459.5	135.6	148.8	13.8	1608.2	149.4



1. All dimensions are in imperial and metric, and measured to structural elements and exclude wall finishes and construction tolerances. 2. All materials, dimensions, and drawings are approximate only. 3. Information is subject to change without notice, at developer's absolute discretion. 4. Actual area may vary from the stated area. 5. Drawings not to scale. 6. All images used are for illustrative purposes only and do not represent the actual size, features, specifications, fittings, and furnishings. 7. The developer reserves the right to make revisions/ alterations, at its absolute discretion, without any liability whatsoever. \*Please note that landscaping and swimming pool are not provided by the developer.



1. All dimensions are in imperial and metric, and measured to structural elements and exclude wall finishes and construction tolerances. 2. All materials, dimensions, and drawings are approximate only. 3. Information is subject to change without notice, at developer's absolute discretion. 4. Actual area may vary from the stated area. 5. Drawings not to scale. 6. All images used are for illustrative purposes only and do not represent the actual size, features, specifications, fittings, and furnishings. 7. The developer reserves the right to make revisions/ alterations, at its absolute discretion, without any liability whatsoever. \*Please note that landscaping and swimming pool are not provided by the developer.

# DUBAI HILLS

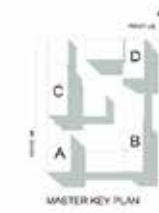
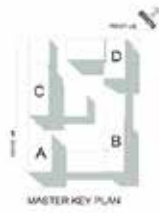
## ESTATE

### PARK POINT

# DUBAI HILLS

## ESTATE

### PARK POINT



### 3 BEDROOM – 3.8

LEVEL	UNIT NUMBER	AREA					
		SUITE		BALCONY		TOTAL	
		Ft <sup>2</sup>	m <sup>2</sup>	Ft <sup>2</sup>	m <sup>2</sup>	Ft <sup>2</sup>	m <sup>2</sup>

### BLOCK B

7	B702	1446.7	134.4	578.8	53.8	2025.5	188.2
---	------	--------	-------	-------	------	--------	-------



### 3 BEDROOM – 3.8

LEVEL	UNIT NUMBER	AREA					
		SUITE		BALCONY		TOTAL	
		Ft <sup>2</sup>	m <sup>2</sup>	Ft <sup>2</sup>	m <sup>2</sup>	Ft <sup>2</sup>	m <sup>2</sup>

### BLOCK C

7	C705	1451.3	134.8	579.4	53.8	2030.7	188.7
---	------	--------	-------	-------	------	--------	-------



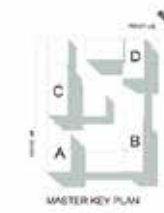
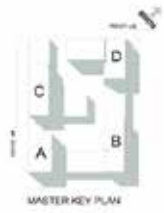
1. All dimensions are in imperial and metric, and measured to structural elements and exclude wall finishes and construction tolerances. 2. All materials, dimensions, and drawings are approximate only. 3. Information is subject to change without notice, at developer's absolute discretion. 4. Actual area may vary from the stated area. 5. Drawings not to scale. 6. All images used are for illustrative purposes only and do not represent the actual size, features, specifications, fittings, and furnishings. 7. The developer reserves the right to make revisions/ alterations, at its absolute discretion, without any liability whatsoever. \*Please note that landscaping and swimming pool are not provided by the developer.



1. All dimensions are in imperial and metric, and measured to structural elements and exclude wall finishes and construction tolerances. 2. All materials, dimensions, and drawings are approximate only. 3. Information is subject to change without notice, at developer's absolute discretion. 4. Actual area may vary from the stated area. 5. Drawings not to scale. 6. All images used are for illustrative purposes only and do not represent the actual size, features, specifications, fittings, and furnishings. 7. The developer reserves the right to make revisions/ alterations, at its absolute discretion, without any liability whatsoever. \*Please note that landscaping and swimming pool are not provided by the developer.

DUBAI HILLS  
ESTATE  
PARK POINT

DUBAI HILLS  
ESTATE  
PARK POINT



3 BEDROOM – 3.8.a

3 BEDROOM – 3.8.a

LEVEL	UNIT NUMBER	AREA					
		SUITE		BALCONY		TOTAL	
		Ft <sup>2</sup>	m <sup>2</sup>	Ft <sup>2</sup>	m <sup>2</sup>	Ft <sup>2</sup>	m <sup>2</sup>

LEVEL	UNIT NUMBER	AREA					
		SUITE		BALCONY		TOTAL	
		Ft <sup>2</sup>	m <sup>2</sup>	Ft <sup>2</sup>	m <sup>2</sup>	Ft <sup>2</sup>	m <sup>2</sup>

BLOCK B

BLOCK C

8	B802	1446.7	134.4	176.7	16.4	1623.4	150.8
---	------	--------	-------	-------	------	--------	-------

8	C805	1451.3	134.8	169.2	15.7	1620.5	150.6
---	------	--------	-------	-------	------	--------	-------



1. All dimensions are in imperial and metric, and measured to structural elements and exclude wall finishes and construction tolerances. 2. All materials, dimensions, and drawings are approximate only. 3. Information is subject to change without notice, at developer's absolute discretion. 4. Actual area may vary from the stated area. 5. Drawings not to scale. 6. All images used are for illustrative purposes only and do not represent the actual size, features, specifications, fittings, and furnishings. 7. The developer reserves the right to make revisions/ alterations, at its absolute discretion, without any liability whatsoever. \*Please note that landscaping and swimming pool are not provided by the developer.



1. All dimensions are in imperial and metric, and measured to structural elements and exclude wall finishes and construction tolerances. 2. All materials, dimensions, and drawings are approximate only. 3. Information is subject to change without notice, at developer's absolute discretion. 4. Actual area may vary from the stated area. 5. Drawings not to scale. 6. All images used are for illustrative purposes only and do not represent the actual size, features, specifications, fittings, and furnishings. 7. The developer reserves the right to make revisions/ alterations, at its absolute discretion, without any liability whatsoever. \*Please note that landscaping and swimming pool are not provided by the developer.

# DUBAI HILLS

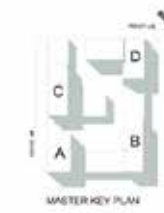
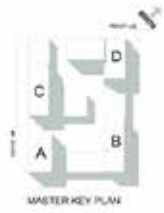
## ESTATE

### PARK POINT

# DUBAI HILLS

## ESTATE

### PARK POINT



		3 BEDROOM – 3.9					
LEVEL	UNIT NUMBER	AREA				TOTAL	
		SUITE		BALCONY		Ft <sup>2</sup>	m <sup>2</sup>
BLOCK B							
1	B109	1295.8	120.4	68.1	6.3	1363.9	126.7
2	B209	1296.0	120.4	68.1	6.3	1364.1	126.7
3	B309	1296.0	120.4	68.1	6.3	1364.1	126.7
4	B409	1296.0	120.4	68.1	6.3	1364.1	126.7
5	B509	1296.0	120.4	68.1	6.3	1364.1	126.7
6	B609	1296.0	120.4	68.1	6.3	1364.1	126.7

		3 BEDROOM – 3.9					
LEVEL	UNIT NUMBER	AREA				TOTAL	
		SUITE		BALCONY		Ft <sup>2</sup>	m <sup>2</sup>
BLOCK B							
7	B703	1295.9	120.4	68.5	6.4	1364.3	126.8
8	B803	1295.9	120.4	68.5	6.4	1364.3	126.8



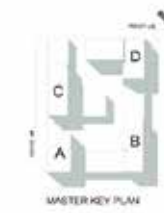
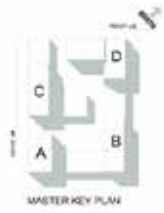
1. All dimensions are in imperial and metric, and measured to structural elements and exclude wall finishes and construction tolerances. 2. All materials, dimensions, and drawings are approximate only. 3. Information is subject to change without notice, at developer's absolute discretion. 4. Actual area may vary from the stated area. 5. Drawings not to scale. 6. All images used are for illustrative purposes only and do not represent the actual size, features, specifications, fittings, and furnishings. 7. The developer reserves the right to make revisions/ alterations, at its absolute discretion, without any liability whatsoever. \*Please note that landscaping and swimming pool are not provided by the developer.



1. All dimensions are in imperial and metric, and measured to structural elements and exclude wall finishes and construction tolerances. 2. All materials, dimensions, and drawings are approximate only. 3. Information is subject to change without notice, at developer's absolute discretion. 4. Actual area may vary from the stated area. 5. Drawings not to scale. 6. All images used are for illustrative purposes only and do not represent the actual size, features, specifications, fittings, and furnishings. 7. The developer reserves the right to make revisions/ alterations, at its absolute discretion, without any liability whatsoever. \*Please note that landscaping and swimming pool are not provided by the developer.

DUBAI HILLS  
ESTATE  
PARK POINT

DUBAI HILLS  
ESTATE  
PARK POINT



3 BEDROOM – 3.10		AREA					
LEVEL	UNIT NUMBER	SUITE		BALCONY		TOTAL	
		Ft <sup>2</sup>	m <sup>2</sup>	Ft <sup>2</sup>	m <sup>2</sup>	Ft <sup>2</sup>	m <sup>2</sup>
BLOCK B							

3 BEDROOM – 3.10.a		AREA					
LEVEL	UNIT NUMBER	SUITE		BALCONY		TOTAL	
		Ft <sup>2</sup>	m <sup>2</sup>	Ft <sup>2</sup>	m <sup>2</sup>	Ft <sup>2</sup>	m <sup>2</sup>
BLOCK B							

7	B705	1358.4	126.2	315.2	29.3	1673.6	155.5
---	------	--------	-------	-------	------	--------	-------

8	B805	1358.4	126.2	182.6	17.0	1541.0	143.2
---	------	--------	-------	-------	------	--------	-------



1. All dimensions are in imperial and metric, and measured to structural elements and exclude wall finishes and construction tolerances. 2. All materials, dimensions, and drawings are approximate only. 3. Information is subject to change without notice, at developer's absolute discretion. 4. Actual area may vary from the stated area. 5. Drawings not to scale. 6. All images used are for illustrative purposes only and do not represent the actual size, features, specifications, fittings, and furnishings. 7. The developer reserves the right to make revisions/ alterations, at its absolute discretion, without any liability whatsoever. \*Please note that landscaping and swimming pool are not provided by the developer.



1. All dimensions are in imperial and metric, and measured to structural elements and exclude wall finishes and construction tolerances. 2. All materials, dimensions, and drawings are approximate only. 3. Information is subject to change without notice, at developer's absolute discretion. 4. Actual area may vary from the stated area. 5. Drawings not to scale. 6. All images used are for illustrative purposes only and do not represent the actual size, features, specifications, fittings, and furnishings. 7. The developer reserves the right to make revisions/ alterations, at its absolute discretion, without any liability whatsoever. \*Please note that landscaping and swimming pool are not provided by the developer.



# DUBAI HILLS

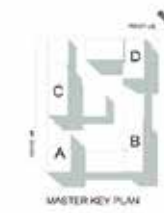
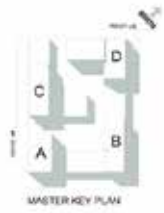
## ESTATE

### PARK POINT

# DUBAI HILLS

## ESTATE

### PARK POINT



#### 2 BEDROOM – A.1

LEVEL	UNIT NUMBER	AREA					
		SUITE		BALCONY		TOTAL	
		Ft <sup>2</sup>	m <sup>2</sup>	Ft <sup>2</sup>	m <sup>2</sup>	Ft <sup>2</sup>	m <sup>2</sup>

#### BLOCK D

9	D901	1254.8	116.6	706.9	65.7	1961.6	182.2
---	------	--------	-------	-------	------	--------	-------



#### 3 BEDROOM – A.2

LEVEL	UNIT NUMBER	AREA					
		SUITE		BALCONY		TOTAL	
		Ft <sup>2</sup>	m <sup>2</sup>	Ft <sup>2</sup>	m <sup>2</sup>	Ft <sup>2</sup>	m <sup>2</sup>

#### BLOCK D

9	D902	1338.2	124.3	548.1	50.9	1886.3	175.2
---	------	--------	-------	-------	------	--------	-------



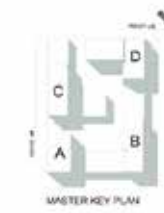
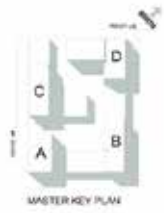
1. All dimensions are in imperial and metric, and measured to structural elements and exclude wall finishes and construction tolerances. 2. All materials, dimensions, and drawings are approximate only. 3. Information is subject to change without notice, at developer's absolute discretion. 4. Actual area may vary from the stated area. 5. Drawings not to scale. 6. All images used are for illustrative purposes only and do not represent the actual size, features, specifications, fittings, and furnishings. 7. The developer reserves the right to make revisions/ alterations, at its absolute discretion, without any liability whatsoever. \*Please note that landscaping and swimming pool are not provided by the developer.



1. All dimensions are in imperial and metric, and measured to structural elements and exclude wall finishes and construction tolerances. 2. All materials, dimensions, and drawings are approximate only. 3. Information is subject to change without notice, at developer's absolute discretion. 4. Actual area may vary from the stated area. 5. Drawings not to scale. 6. All images used are for illustrative purposes only and do not represent the actual size, features, specifications, fittings, and furnishings. 7. The developer reserves the right to make revisions/ alterations, at its absolute discretion, without any liability whatsoever. \*Please note that landscaping and swimming pool are not provided by the developer.

DUBAI HILLS  
ESTATE  
PARK POINT

DUBAI HILLS  
ESTATE  
PARK POINT



2 BEDROOM – A.3

LEVEL	UNIT NUMBER	AREA					
		SUITE		BALCONY		TOTAL	
		Ft <sup>2</sup>	m <sup>2</sup>	Ft <sup>2</sup>	m <sup>2</sup>	Ft <sup>2</sup>	m <sup>2</sup>

BLOCK D

9	D903	899.0	83.5	419.8	39.0	1318.8	122.5
---	------	-------	------	-------	------	--------	-------



DUPLEX (LOWER LEVEL)

LEVEL	UNIT NUMBER	AREA					
		SUITE		BALCONY		TOTAL	
		Ft <sup>2</sup>	m <sup>2</sup>	Ft <sup>2</sup>	m <sup>2</sup>	Ft <sup>2</sup>	m <sup>2</sup>

BLOCK A

8	A803	2422.7	225.1	347.9	32.3	2770.5	257.4
---	------	--------	-------	-------	------	--------	-------



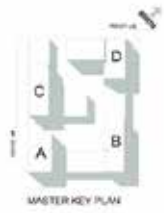
1. All dimensions are in imperial and metric, and measured to structural elements and exclude wall finishes and construction tolerances. 2. All materials, dimensions, and drawings are approximate only. 3. Information is subject to change without notice, at developer's absolute discretion. 4. Actual area may vary from the stated area. 5. Drawings not to scale. 6. All images used are for illustrative purposes only and do not represent the actual size, features, specifications, fittings, and furnishings. 7. The developer reserves the right to make revisions/ alterations, at its absolute discretion, without any liability whatsoever. \*Please note that landscaping and swimming pool are not provided by the developer.



1. All dimensions are in imperial and metric, and measured to structural elements and exclude wall finishes and construction tolerances. 2. All materials, dimensions, and drawings are approximate only. 3. Information is subject to change without notice, at developer's absolute discretion. 4. Actual area may vary from the stated area. 5. Drawings not to scale. 6. All images used are for illustrative purposes only and do not represent the actual size, features, specifications, fittings, and furnishings. 7. The developer reserves the right to make revisions/ alterations, at its absolute discretion, without any liability whatsoever. \*Please note that landscaping and swimming pool are not provided by the developer.

# DUBAI HILLS

ESTATE  
PARK POINT



## DUPLEX (UPPER LEVEL)

LEVEL	UNIT NUMBER	AREA				TOTAL	
		SUITE		BALCONY		Ft <sup>2</sup>	m <sup>2</sup>

### BLOCK A

8	A803	2422.7	225.1	347.9	32.3	2770.5	257.4
---	------	--------	-------	-------	------	--------	-------



24/7 Sales Contact No.  
+971 4248 3400

More Details are Available in  
<http://www.tanamiproperties.com/>