



PRIME

TOWER

by ■ uniostate

DUBAI, UAE



WORK-LIFE BALANCE



Importance of Work-Life balance

Work-life balance is the state where a person chooses to equally prioritize the demands of work and career and the demands of their personal life.



Happy life

is about living in the present and taking care of your needs at that moment.



FEEL THE TOUCH OF NATURE
IN THE MIDDLE OF DUBAI

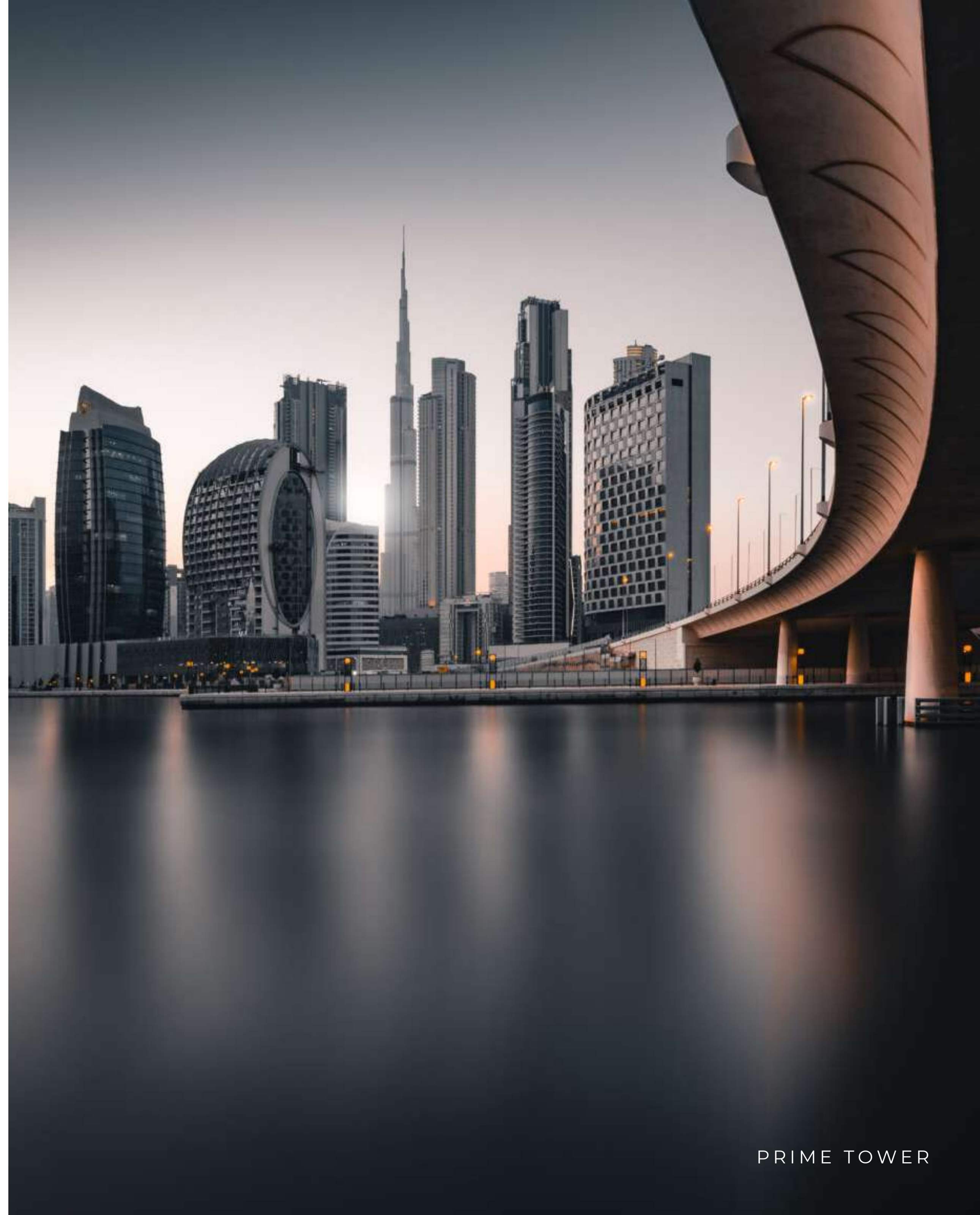


Uniestate: Elevating the Art of Living

With over 28 years of experience since 1995, Uniestate is a trusted name in UAE real estate. Our commitment to excellence in development, contracting, and customer service sets us apart.



From iconic residential and commercial spaces to innovative mixed-use projects, we create exceptional spaces that inspire.





Discover the Uniestate difference and embark on a remarkable journey towards your brighter future.



Dubai`s Road to Prosperity

Ignite Your Potential in a Global Powerhouse. With its strategic location, business-friendly environment, and diverse growth opportunities, Dubai is a magnet for investors worldwide.

Experience stability, tax benefits, and a high quality of life while being part of Dubai`s visionary journey. Unlock limitless possibilities for success and prosperity as you invest in the vibrant heart of the UAE.





EXPERIENCE THE RHYTHM
OF VIBRANT LIVING IN
JUMEIRAH VILLAGE CIRCLE



Discover an exceptional quality of life in Jumeirah Village Circle, where tranquility and community thrive. Immerse yourself in the beauty of green landscapes, thoughtfully designed parks, and a welcoming neighborhood atmosphere. Experience convenient access to top-notch schools, healthcare facilities, retail destinations, and recreational spaces, ensuring that all your needs are met.

JUMEIRAH VILLAGE CIRCLE

offers a harmonious balance of modern living and natural serenity, making it an ideal place to create cherished memories and enjoy a fulfilling lifestyle.

The Path to Well-Being

With its lush greenery, scenic parks, and invigorating fitness amenities, JVC promotes an active and vibrant lifestyle. Discover a community designed to nourish your well-being, where wellness and nature unite to create a sanctuary for a healthy and balanced life. Embrace the vitality of Jumeirah Village Circle and unlock a world of health and happiness at your doorstep.





Discover the Ultimate Family Hub:

Jumeirah Village Circle (JVC). With schools, shopping centers, and sports academies within walking distance, JVC offers unrivaled convenience for families. Experience a community where education, leisure, and sports come together, providing a well-rounded environment for your children's growth and happiness.





Vibrant Living

Immerse yourself in the vibrant lifestyle of Jumeirah Village Circle , where a world of entertainment awaits at your doorstep.





From trendy cafes and gourmet restaurants to buzzing nightlife venues, JVC offers a diverse range of dining and entertainment options to cater to every taste. Indulge in retail therapy at the nearby shopping centers, catch the latest blockbuster at the cinema, or enjoy outdoor activities in the beautifully landscaped parks.

PRIME

TOWER

by ■ uniostate

EMBRACE THE ART OF
BALANCED LIVING



WELCOME TO PRIME TOWER

where dreams of owning a coveted investment property in the heart of Jumeirah Village Circle come to life. Our ready apartments transcend the ordinary, offering not just a home but an exclusive opportunity for high-value investment.

With flexible payment options, exquisite features, and a prime location surrounded by vibrant amenities, Prime Tower sets the stage for a truly exceptional lifestyle and a future filled with unparalleled success.



Dubai Marina

Burj al Arab

Downtown
Burj Kahlifa

Dubai Hills Mall

PRIME
TOWER

JSS School

Circle Mall

Nord Angelia
International School

Five Hotel

Sunmarke
School

Live at the Center of It All: Prime Tower in an Enviably Prime Location

Sports

Community	3 Minutes
Park Wellfit	3 Minutes

Schools

JSS school	3 minutes
Sunmarke	10 minutes
Nord Angila	10 Minutes

Shopping malls

Circle Mall	3 minutes
Dubai Hills Mall	10 minutes
Dubai Mall	18 Minutes

Attractions

Five Hotel JVC	3 Minutes
Els golf club	10 Minutes
JBR beach	18 Minutes

Hospital

Saudi German Hospital	10 minutes
Kings College London	10 minutes
Dubai Hills	

Airport

Dubai international	20 minutes
Airport	
Al Maktoum	25 Minutes
International	
Airport	



Smart Investment Made Easy

with Flexible Payment Plans



APARTMENTS



Ready, Set, Live

Prime Tower`s Move-in Ready Apartments»







Unparalleled Space and Style:

Studios, 1-BR, and 2-BR Apartments
Designed for Modern Living»









Smart Investment Balanced Living

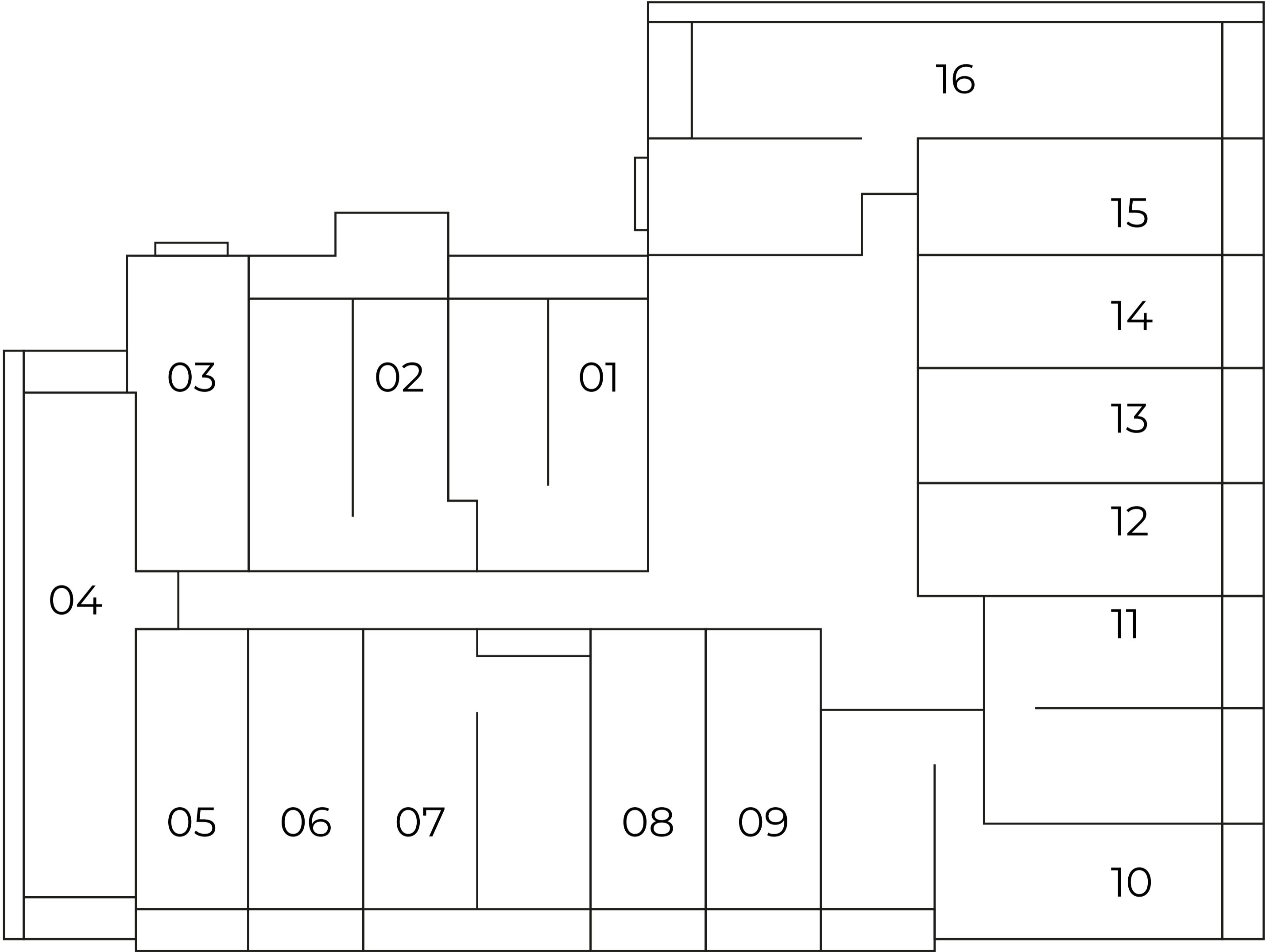
Elevate Your Life. Experience the perfect blend of smart investment and balanced living at Prime Tower. Discover a vibrant community that prioritizes health, family, and lifestyle, offering an enriching living experience beyond compare.



A photograph of a staircase with a white curved graphic overlay. The staircase is made of light-colored stone or concrete steps, leading up from a landing. The walls are a textured, light-colored material. A bright light source from the right casts a strong shadow of the staircase onto the wall. A thick, white, curved line starts from the bottom right and curves upwards and to the left, following the path of the stairs. The word 'PLANNING' is centered in the middle of the image in a white, sans-serif font, with a short horizontal line underneath it.

PLANNING

**General Plan
(Floor 1-8)**





Type 01 1 Bedroom

Unit Details

Unit Type 01
1 bedroom
Size from 774 to 775 sq.ft

Location in Building



The floor plan images are for illustration purposes and do not accurately depict the size, features, specifications, fittings, or furnishings. All materials, dimensions, and drawings are approximate. The exact area will be specified in the individual unit's sales agreement

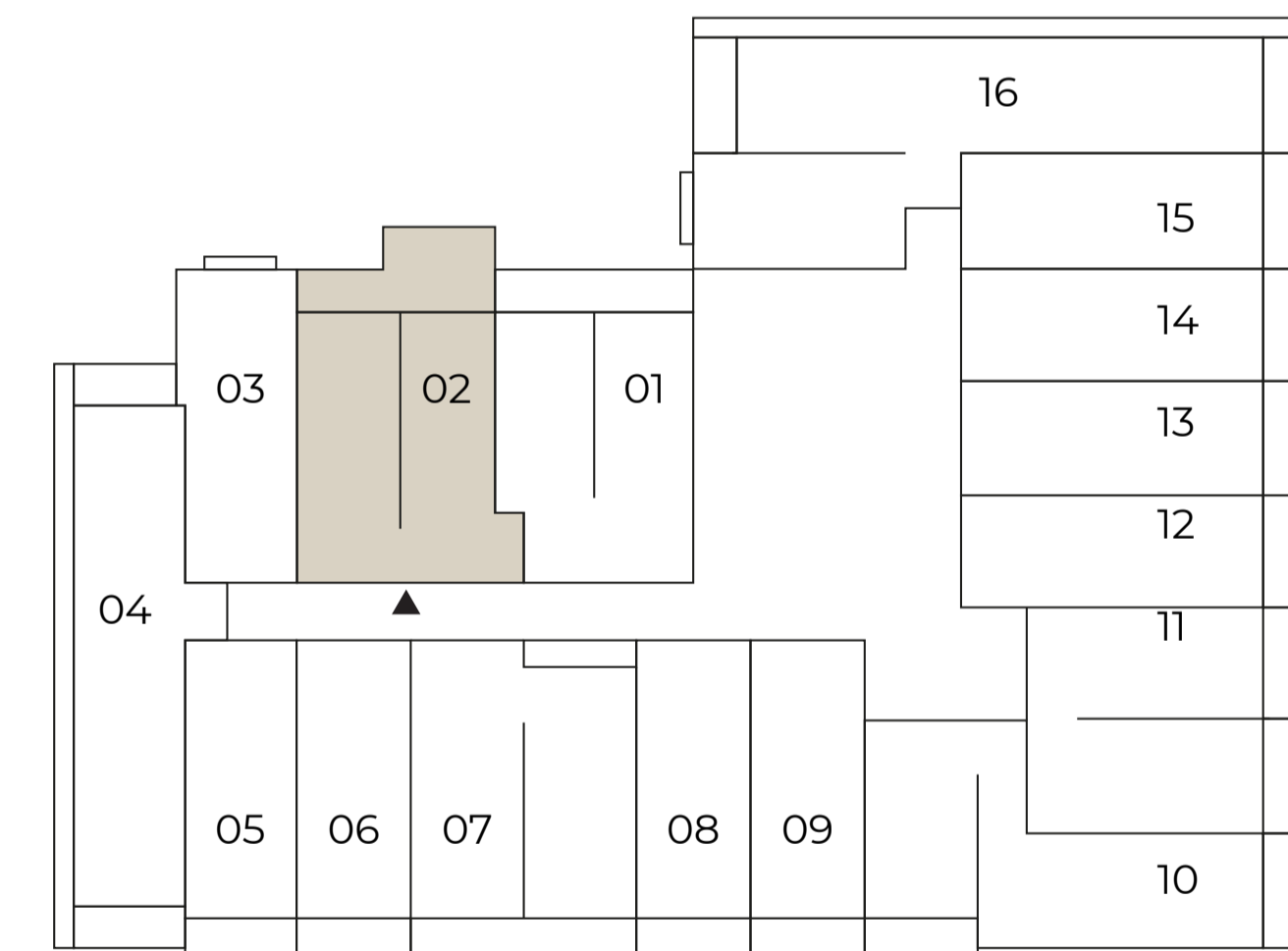


Type 02 1 Bedroom

Unit Details

Unit Type 02
1 bedroom
Size from 818 to 819 sq.ft.

Location in Building



The floor plan images are for illustration purposes and do not accurately depict the size, features, specifications, fittings, or furnishings. All materials, dimensions, and drawings are approximate. The exact area will be specified in the individual unit's sales agreement.

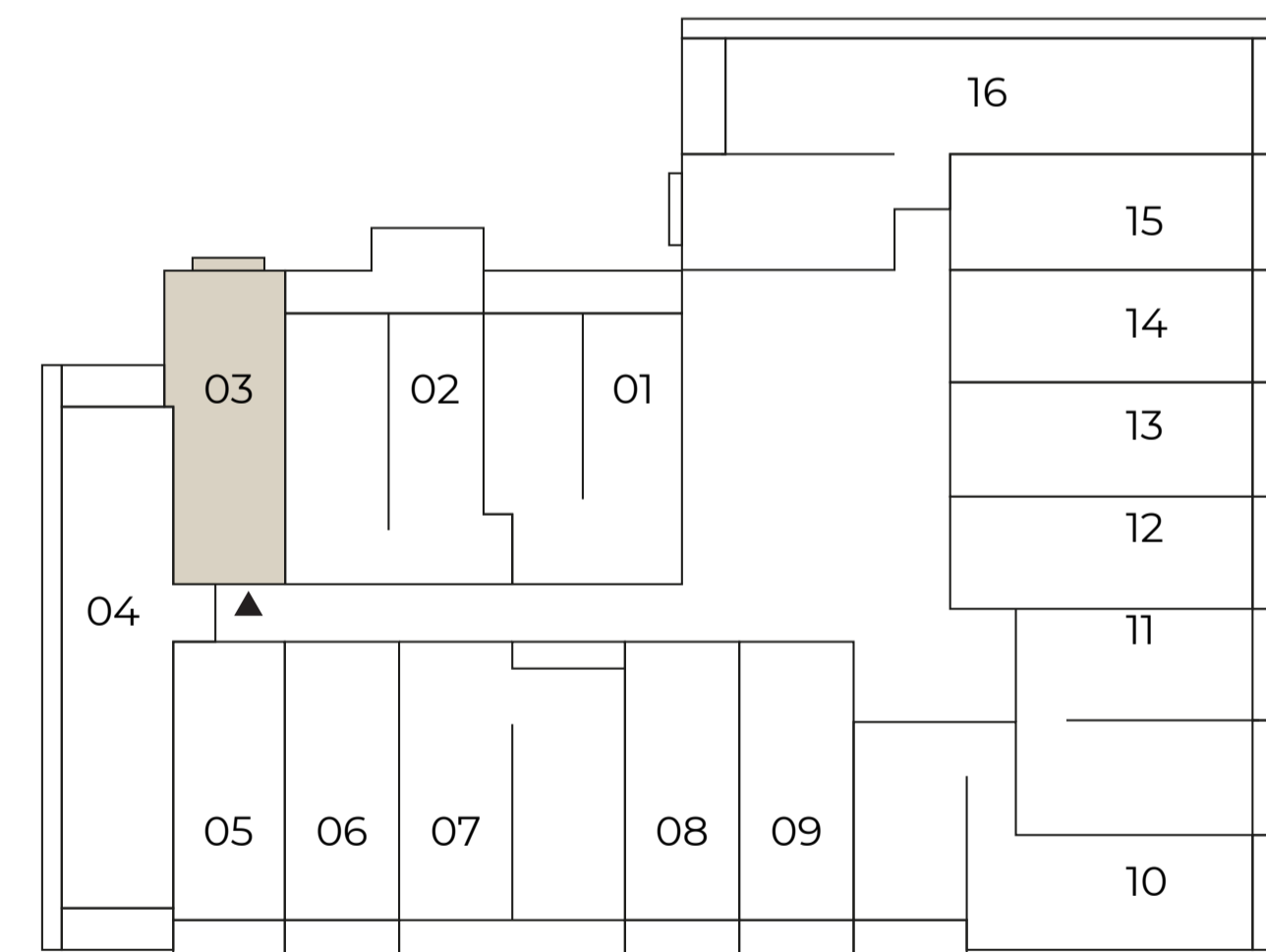


Type 03 Studio

Unit Details

Unit Type 03
 Studio
 Size from 472 to 473 sq.ft.

Location in Building



The floor plan images are for illustration purposes and do not accurately depict the size, features, specifications, fittings, or furnishings. All materials, dimensions, and drawings are approximate. The exact area will be specified in the individual unit's sales agreement



Type 04 1 Bedroom

Unit Details

Unit Type 04
1 Bedroom
Size from 841 to 903 sq.ft.

Location in Building



The floor plan images are for illustration purposes and do not accurately depict the size, features, specifications, fittings, or furnishings. All materials, dimensions, and drawings are approximate. The exact area will be specified in the individual unit's sales agreement.

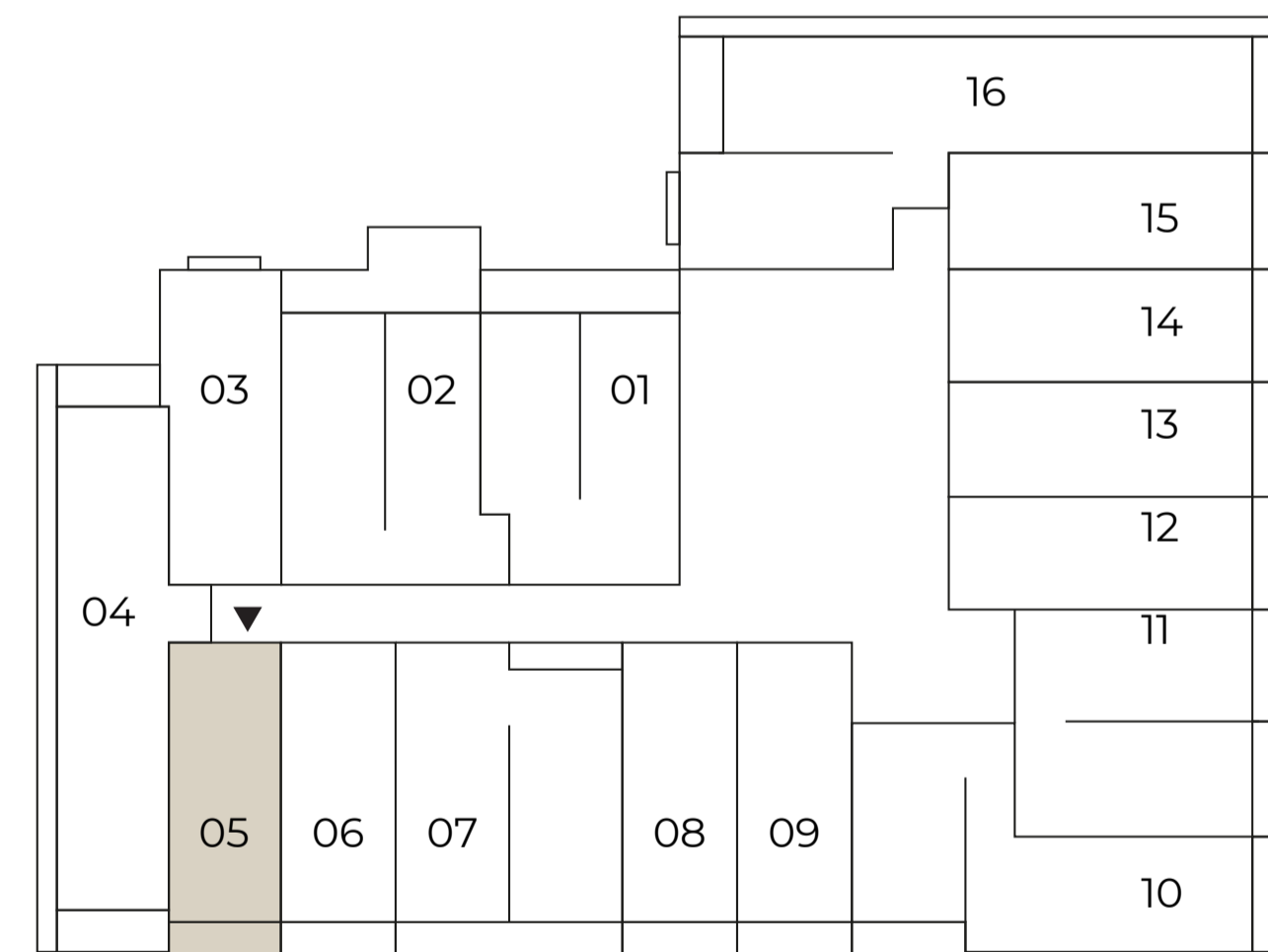


Type 05 Studio

Unit Details

Unit Type 05
Studio
Size from 420 to 451 sq.ft.

Location in Building



The floor plan images are for illustration purposes and do not accurately depict the size, features, specifications, fittings, or furnishings. All materials, dimensions, and drawings are approximate. The exact area will be specified in the individual unit's sales agreement.

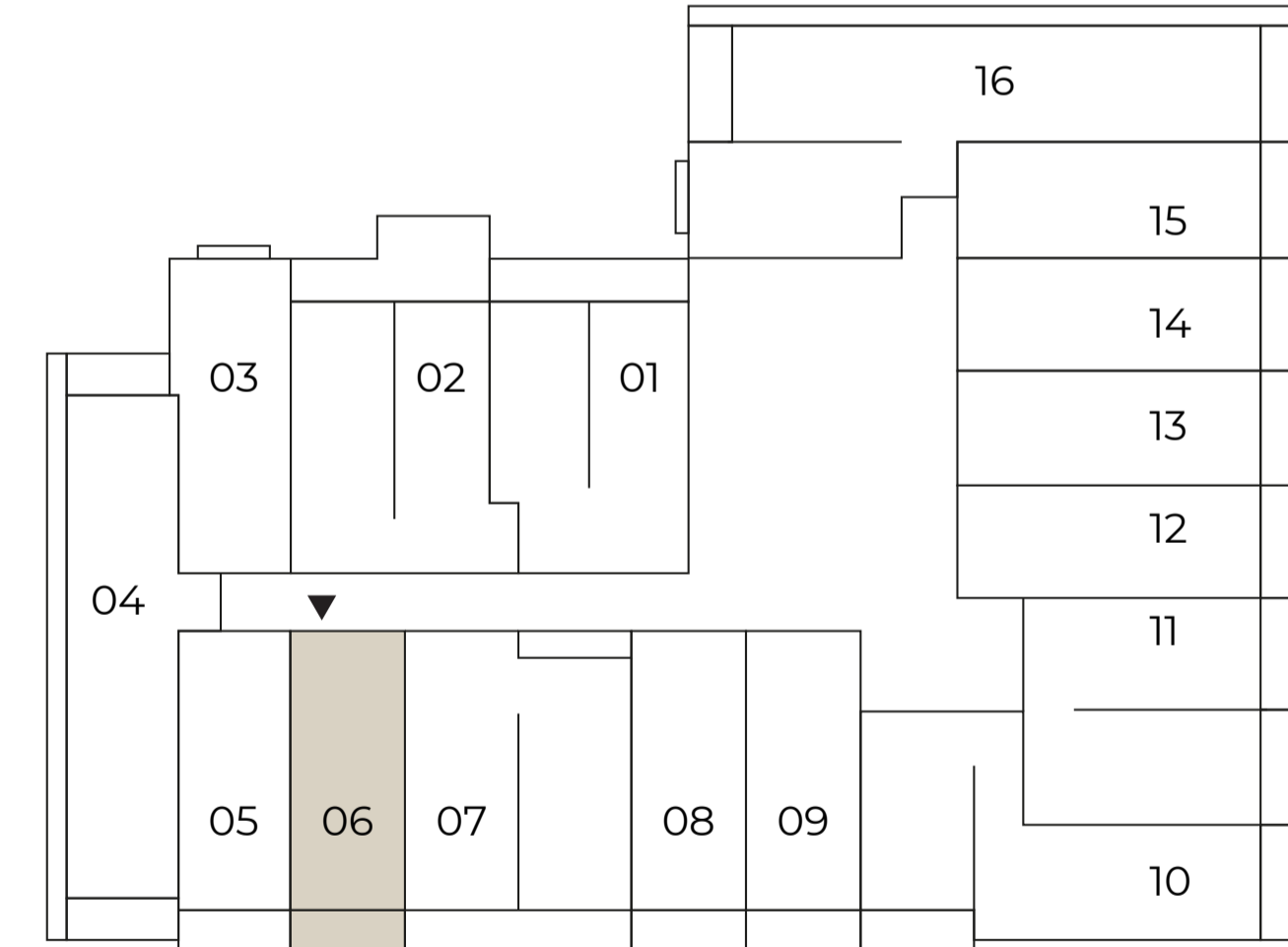


Type 06 Studio

Unit Details

Unit Type 06
Studio
Size from 427 to 460 sq.ft.

Location in Building



The floor plan images are for illustration purposes and do not accurately depict the size, features, specifications, fittings, or furnishings. All materials, dimensions, and drawings are approximate. The exact area will be specified in the individual unit's sales agreement

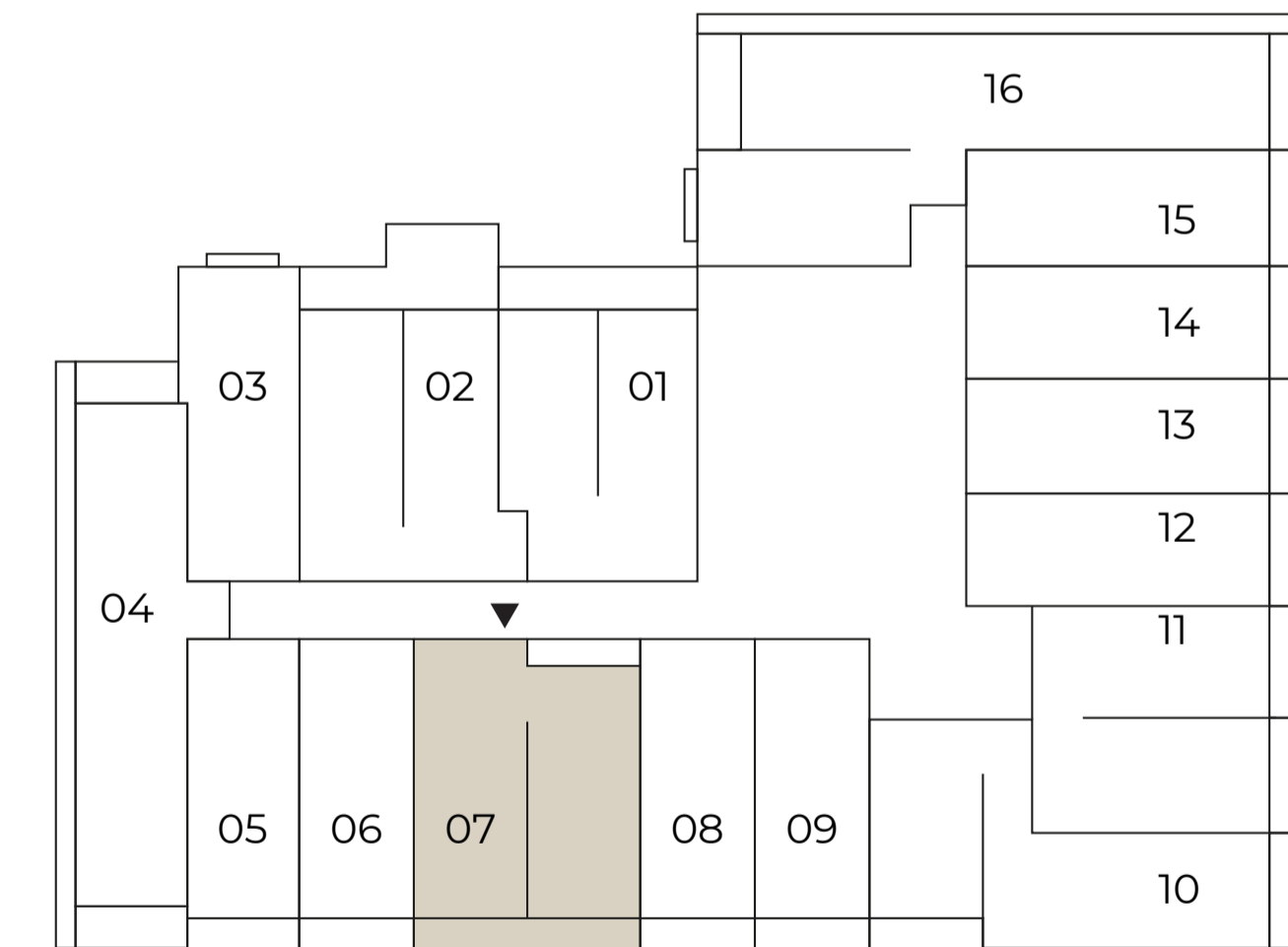


Type 07 1 Bedroom

Unit Details

Unit Type 07
1 Bedroom
Size from 837 to 885 sq.ft.

Location in Building



The floor plan images are for illustration purposes and do not accurately depict the size, features, specifications, fittings, or furnishings. All materials, dimensions, and drawings are approximate. The exact area will be specified in the individual unit's sales agreement.

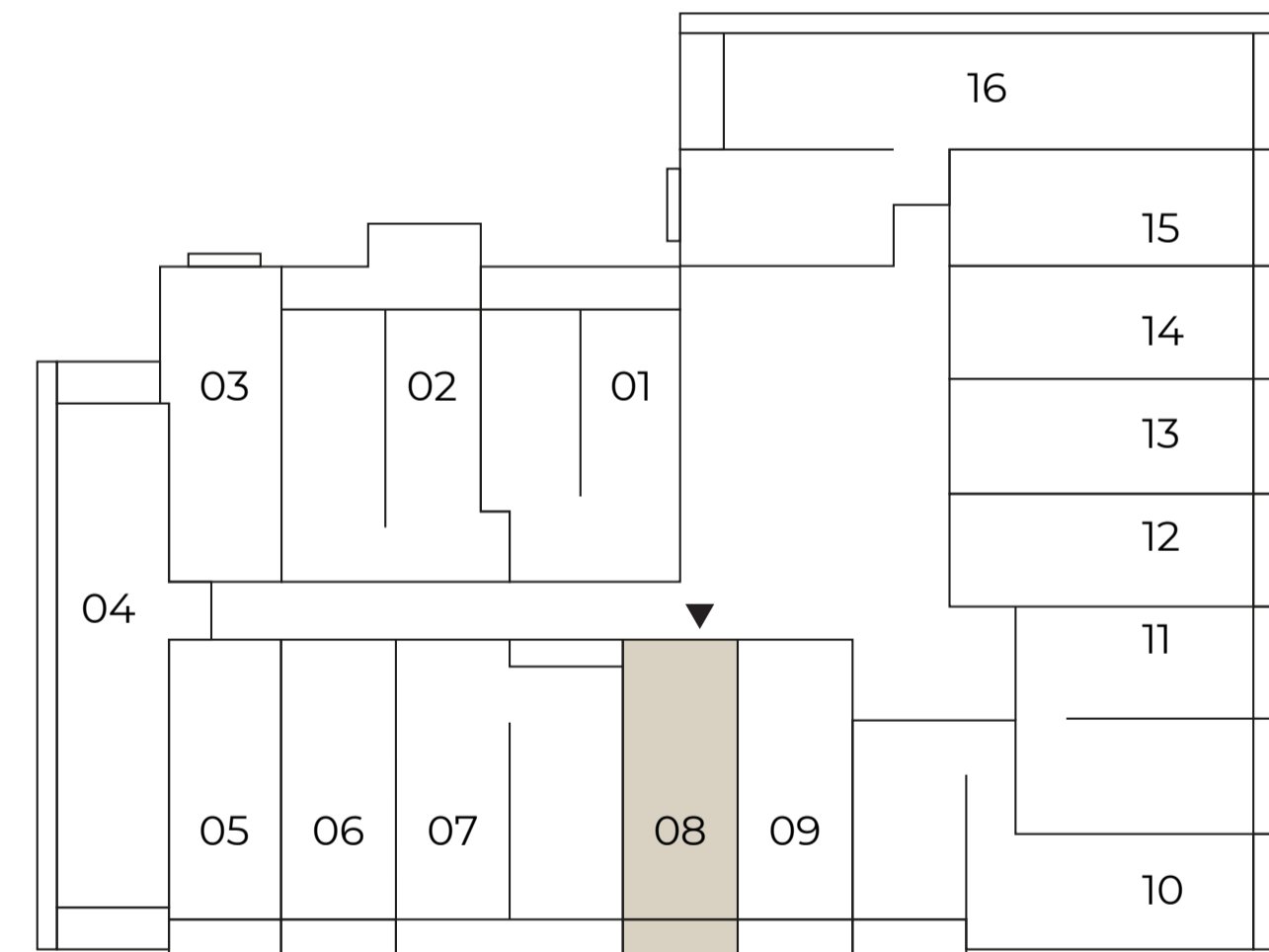


Type 08 Studio

Unit Details

Unit Type 08
Studio
Size from 427 to 459 sq.ft.

Location in Building



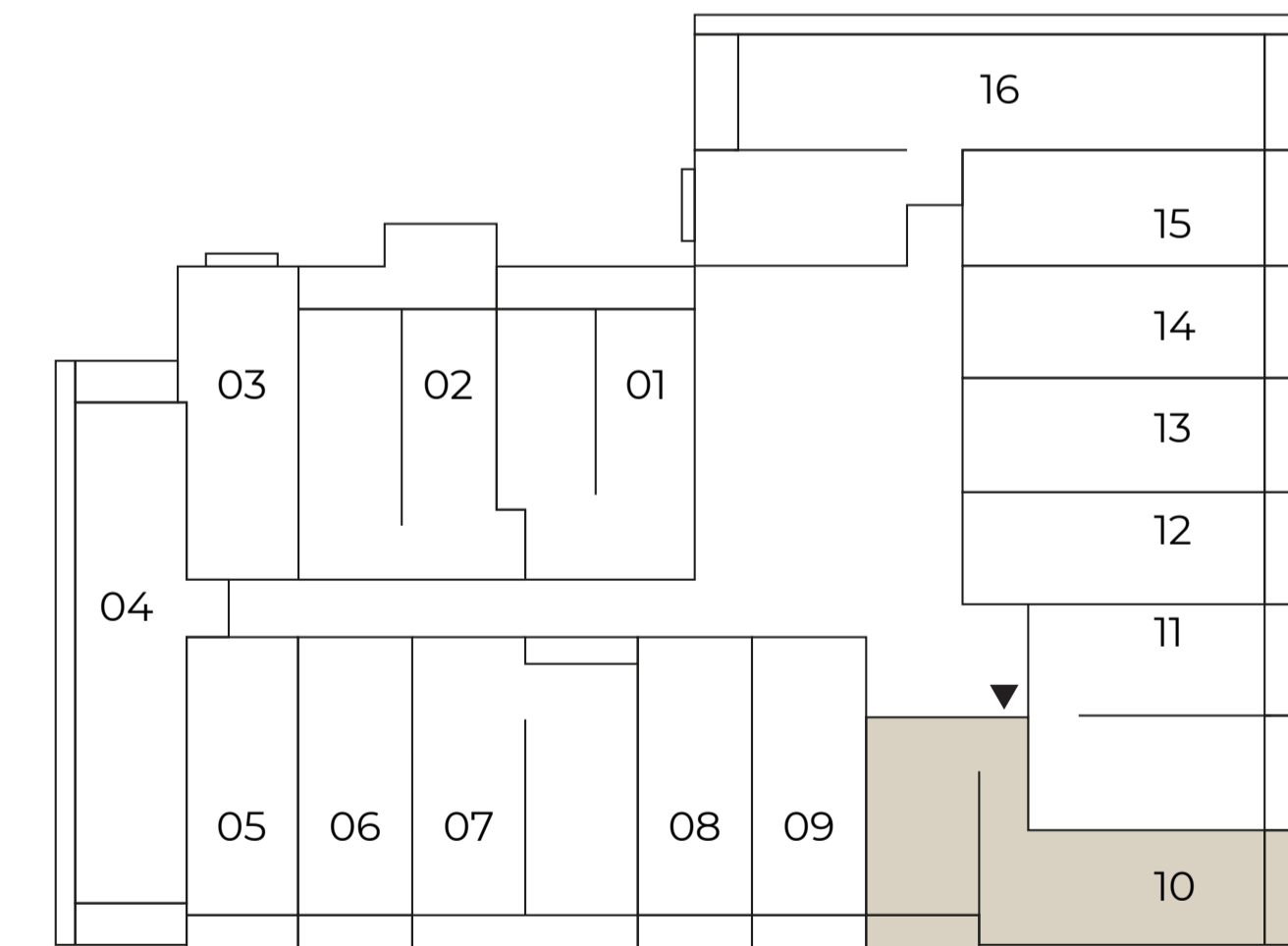
The floor plan images are for illustration purposes and do not accurately depict the size, features, specifications, fittings, or furnishings. All materials, dimensions, and drawings are approximate. The exact area will be specified in the individual unit's sales agreement.

Type 10 1 Bedroom

Unit Details

Unit Type 10
1 Bedroom
Size from 832 to 896 sq.ft.

Location in Building



The floor plan images are for illustration purposes and do not accurately depict the size, features, specifications, fittings, or furnishings. All materials, dimensions, and drawings are approximate. The exact area will be specified in the individual unit's sales agreement.

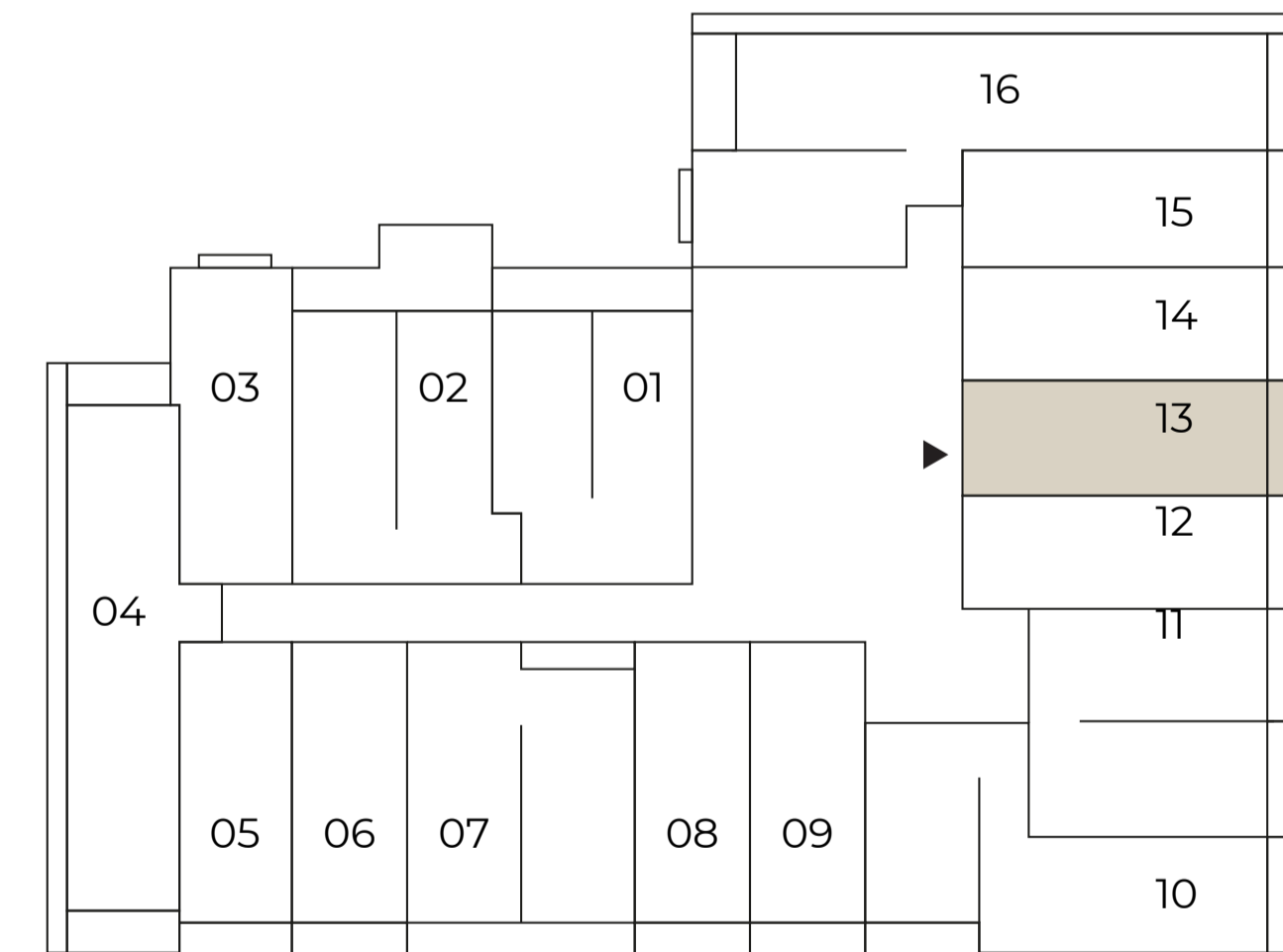


Type 13 Studio

Unit Details

Unit Type 13
Studio
Size from 466 to 498 sq.ft.

Location in Building



The floor plan images are for illustration purposes and do not accurately depict the size, features, specifications, fittings, or furnishings. All materials, dimensions, and drawings are approximate. The exact area will be specified in the individual unit's sales agreement.

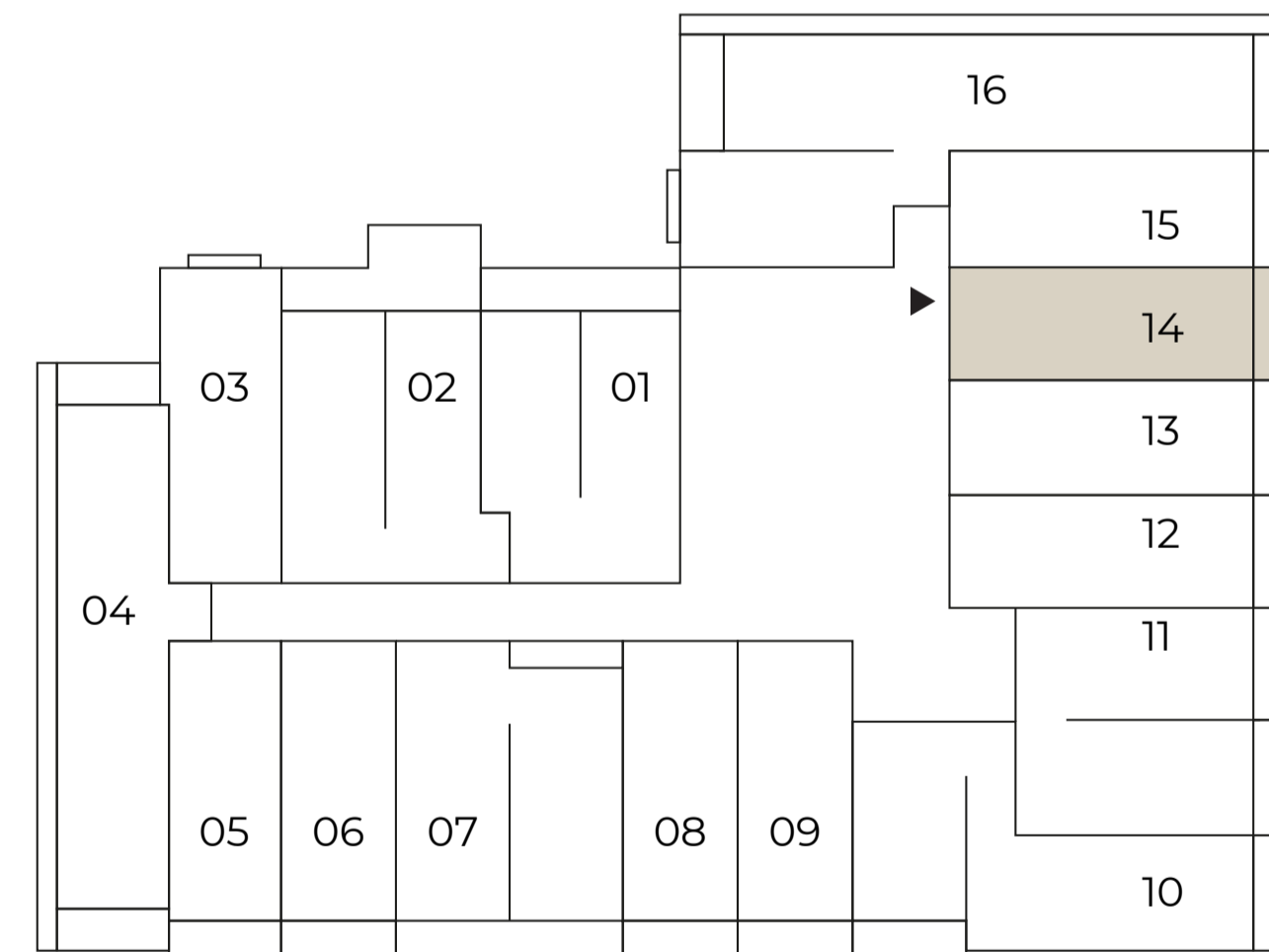


Type 14 Studio

Unit Details

Unit Type 14
 Studio
 Size from 455 to 486 sq.ft.

Location in Building



The floor plan images are for illustration purposes and do not accurately depict the size, features, specifications, fittings, or furnishings. All materials, dimensions, and drawings are approximate. The exact area will be specified in the individual unit's sales agreement

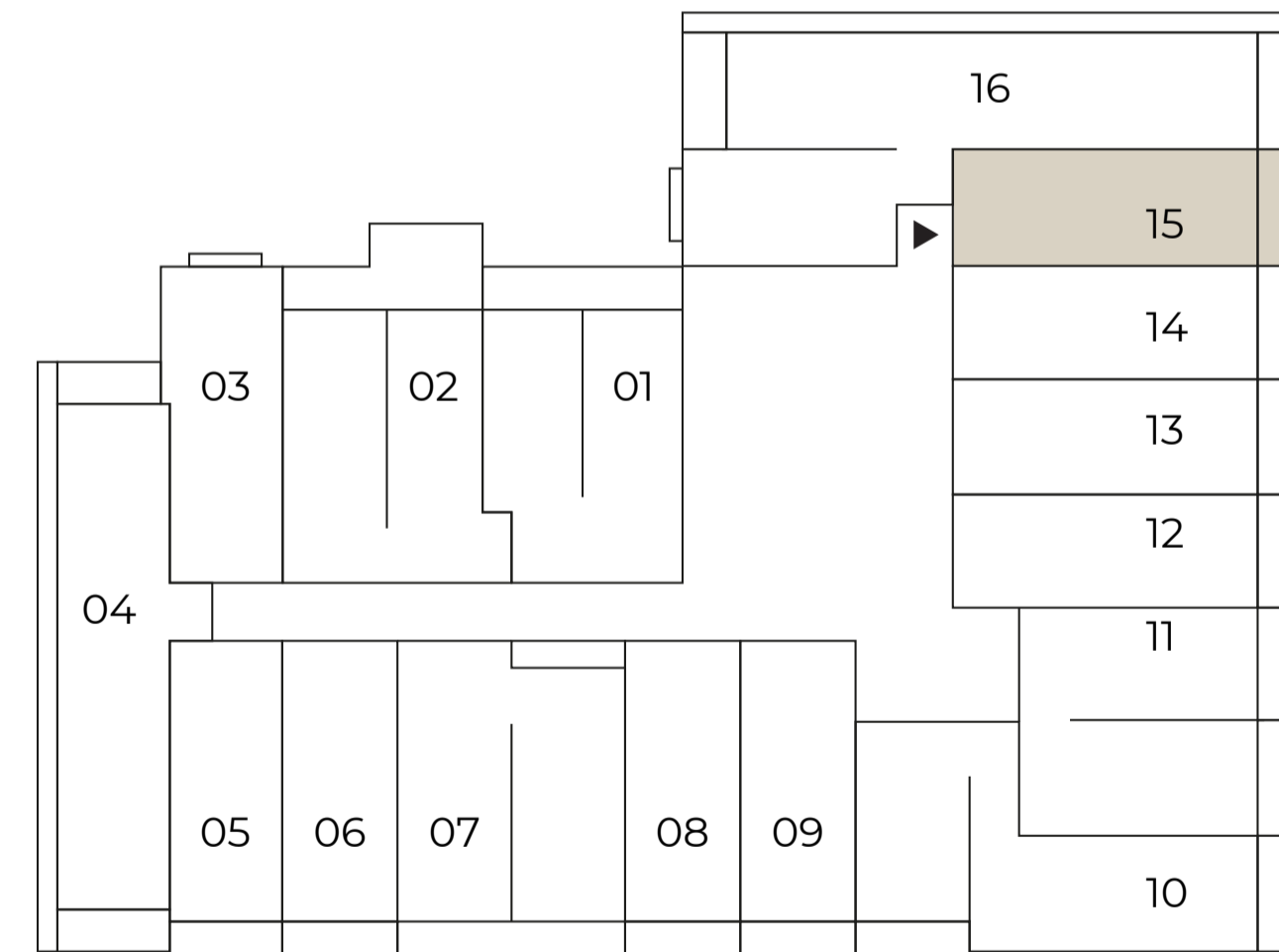


Type 15 Studio

Unit Details

Unit Type 15
 Studio
 Size from 476 to 509 sq.ft.

Location in Building



The floor plan images are for illustration purposes and do not accurately depict the size, features, specifications, fittings, or furnishings. All materials, dimensions, and drawings are approximate. The exact area will be specified in the individual unit's sales agreement



PRIME TOWER,
WHERE ENCHANTMENT AND
LOCATION CONVERGE