

**DAMAC**



*Paramount Tower*

---

HOTEL  
FLOOR PLANS





# HOTEL - STUDIO

UNIT AREA	BALCONY	TOTAL
470 sqft	50 sqft	520 sqft



# HOTEL - 1 BEDROOM

UNIT AREA	BALCONY	TOTAL
935 sqft	119 sqft	1,054 sqft



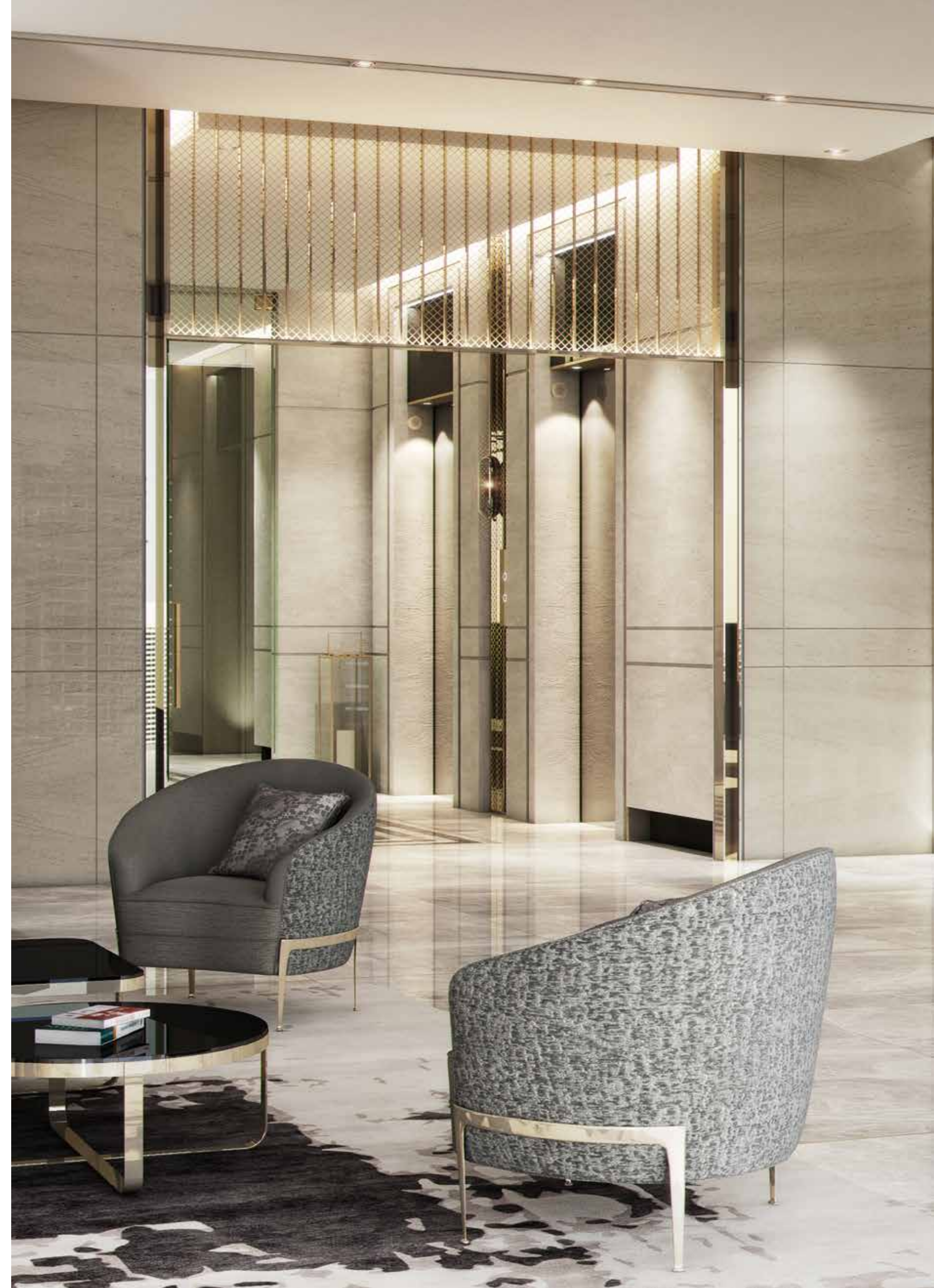
Unless stated otherwise, all accessories and interior finishes such as wallpaper, chandeliers, furniture, electronics, white goods, curtains, hard and soft landscaping, pavements, features, swimming pool(s) and other elements displayed in the brochure, or within the show apartment or between the plot boundary and the unit, are not part of the standard unit and are shown for illustrative purposes only.

Unless stated otherwise, all accessories and interior finishes such as wallpaper, chandeliers, furniture, electronics, white goods, curtains, hard and soft landscaping, pavements, features, swimming pool(s) and other elements displayed in the brochure, or within the show apartment or between the plot boundary and the unit, are not part of the standard unit and are shown for illustrative purposes only.



# HOTEL - 2 BEDROOMS

UNIT AREA	BALCONY	TOTAL
1,282 sqft	88 sqft	1,370 sqft

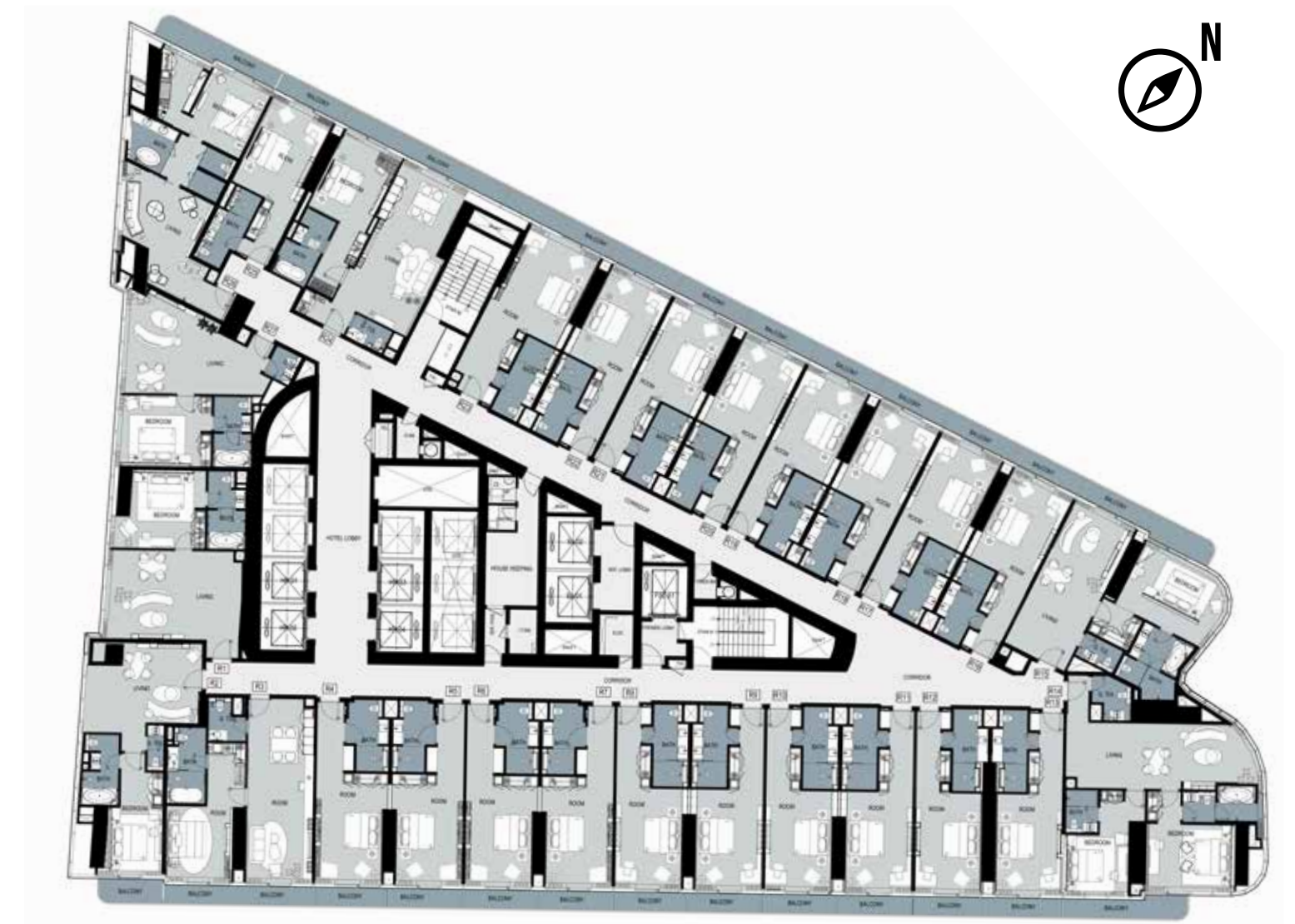


Unless stated otherwise, all accessories and interior finishes such as wallpaper, chandeliers, furniture, electronics, white goods, curtains, hard and soft landscaping, pavements, features, swimming pool(s) and other elements displayed in the brochure, or within the show apartment or between the plot boundary and the unit, are not part of the standard unit and are shown for illustrative purposes only.



# TYPICAL FLOOR PLAN FLOOR 15

# TYPICAL FLOOR PLAN FLOOR 16



Unless stated otherwise, all accessories and interior finishes such as wallpaper, chandeliers, furniture, electronics, white goods, curtains, hard and soft landscaping, pavements, features, swimming pool(s) and other elements displayed in the brochure, or within the show apartment or between the plot boundary and the unit, are not part of the standard unit and are shown for illustrative purposes only.

Unless stated otherwise, all accessories and interior finishes such as wallpaper, chandeliers, furniture, electronics, white goods, curtains, hard and soft landscaping, pavements, features, swimming pool(s) and other elements displayed in the brochure, or within the show apartment or between the plot boundary and the unit, are not part of the standard unit and are shown for illustrative purposes only.



# TYPICAL FLOOR PLAN FLOOR 17 - 25

## LUXURY BY APPOINTMENT

CONTACT US AT ANY OF OUR OFFICES OR VISIT DAMACPROPERTIES.COM

### UNITED ARAB EMIRATES

Dubai  
Park Towers  
Dubai International Financial Centre  
Tel: 800-DAMAC (800-32622)  
Email: dubai@damacgroup.com

DAMAC Hills Sales Centre  
Sheikh Zayed bin Hamdan  
Al Nahyan Street  
Tel: 800-DAMAC (800-32622)  
Email: dubai@damacgroup.com

DAMAC Hills Sales Centre  
Golf Vudata  
Townhouse TH2  
Sheikh Zayed bin Hamdan  
Al Nahyan Street  
Tel: 800-DAMAC (800-32622)  
Email: dubai@damacgroup.com

### QATAR

Building 90, New Solta Area  
Ali bin Abi Talib Street  
Next to Omar bin Al Khattab Health Centre  
Tel: +974 44 666 986  
Fax: +974 44 554 576  
Email: doha@damacgroup.com

### KINGDOM OF SAUDI ARABIA

Riyadh  
DAMAC Towers Riyadh  
South Tower  
Olaya District  
King Fahd Road  
PO Box 102460  
Tel: +966 11 835 0300  
Email: ksa@damacgroup.com

### TURKEY

Levazım, Mah. Koru Sk. Zorlu Centre No: 2  
Ic Kapi 347 Beşiktaş/Istanbul, Turkey  
Tel: +90 212 892 0327  
Fax: +90 212 890 7184  
E-mail: turkey.office@damacgroup.com

### LEBANON

Unit 1801, 18th Floor  
DAMAC Tower  
Omar Daouk Street  
Mina El Hosn, Beirut Central District  
Tel: +961 81 647 200  
Email: beirut@damacgroup.com

### JORDAN

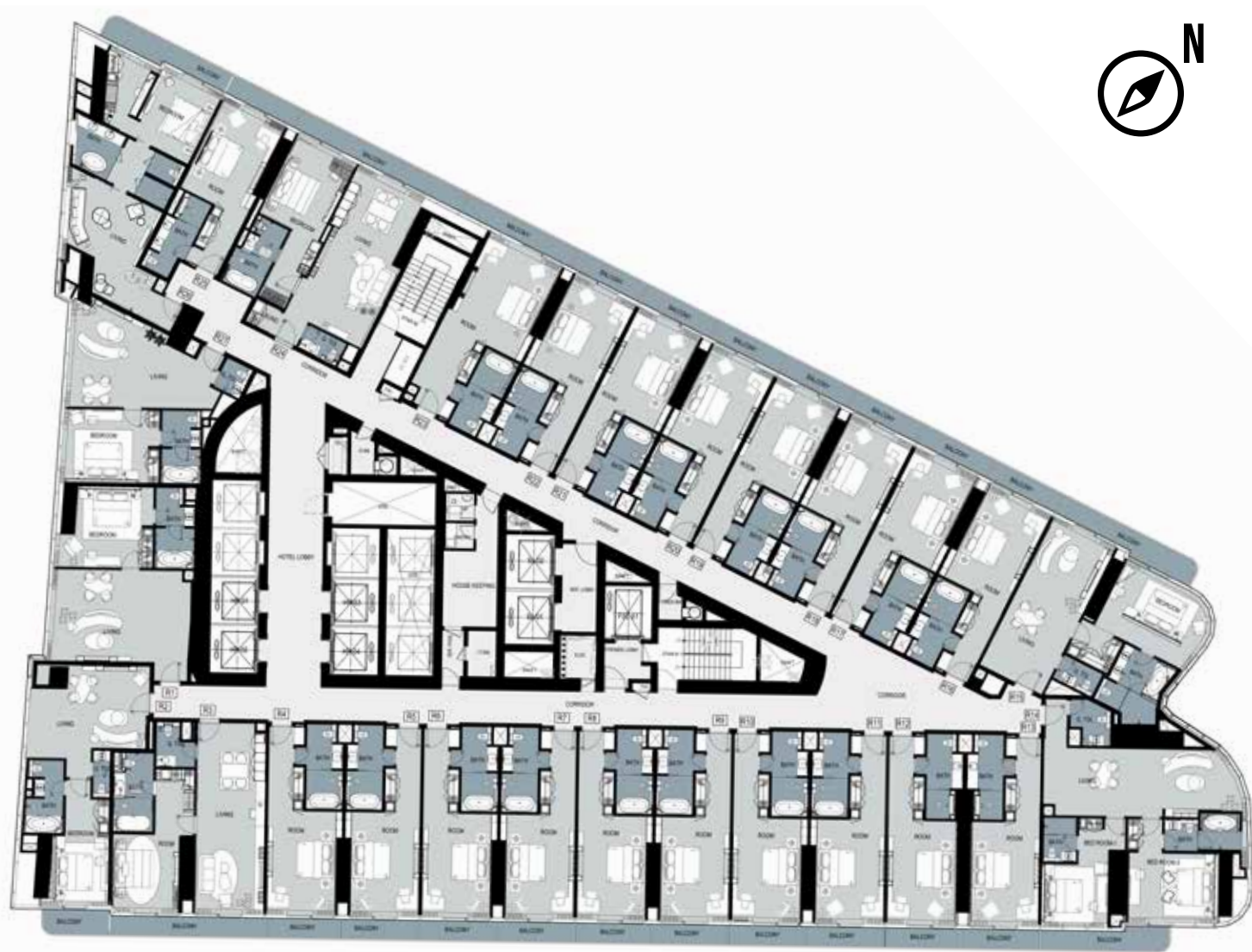
Al Istithmar Street  
Abdali Project  
Amman  
Opposite Abdali Mall Gate #1  
Tel: +962 6 510 7000  
Fax: +962 6 565 7896  
E-mail: amman@damacgroup.com

### UNITED KINGDOM



4th Floor, 100 Brompton Road  
Opposite Harrods  
Knightsbridge, London  
SW3 1ER, United Kingdom  
Tel: +44 (0) 207 590 8050  
Email: sales@damactower.co.uk

### CHINA

Shanghai  
Room 803  
8th Floor, Building 2  
1266 West Nanjing Road  
Jing'an District, Shanghai  
China, 200040  
Tel: +86 21 6086 1266



 /DAMACPropertiesOfficial  /DAMACOfficial  /DAMACOfficial

 DAMAC Properties  /DAMACOfficial

Unless stated otherwise, all accessories and interior finishes such as wallpaper, chandeliers, furniture, electronics, white goods, curtains, hard and soft landscaping, pavements, features, swimming pool(s) and other elements displayed in the brochure, or within the show apartment or between the plot boundary and the unit, are not part of the standard unit and are shown for illustrative purposes only.



**DAMAC**



*Paramount Tower*

---

**RESIDENTIAL  
FLOOR PLANS**





# RESIDENTIAL - STUDIO

UNIT AREA	BALCONY	TOTAL
411 sqft	55 sqft	466 sqft



Unless stated otherwise, all accessories and interior finishes such as wallpaper, chandeliers, furniture, electronics, white goods, curtains, hard and soft landscaping, pavements, features, swimming pool(s) and other elements displayed in the brochure, or within the show apartment or between the plot boundary and the unit, are not part of the standard unit and are shown for illustrative purposes only.

# RESIDENTIAL - 1 BEDROOM

UNIT AREA	BALCONY	TOTAL
837 sqft	141 sqft	978 sqft



Unless stated otherwise, all accessories and interior finishes such as wallpaper, chandeliers, furniture, electronics, white goods, curtains, hard and soft landscaping, pavements, features, swimming pool(s) and other elements displayed in the brochure, or within the show apartment or between the plot boundary and the unit, are not part of the standard unit and are shown for illustrative purposes only.



# RESIDENTIAL - 2 BEDROOMS

UNIT AREA	BALCONY	TOTAL
1,108 sqft	214 sqft	1,322 sqft



Unless stated otherwise, all accessories and interior finishes such as wallpaper, chandeliers, furniture, electronics, white goods, curtains, hard and soft landscaping, pavements, features, swimming pool(s) and other elements displayed in the brochure, or within the show apartment or between the plot boundary and the unit, are not part of the standard unit and are shown for illustrative purposes only.



# RESIDENTIAL - 3 BEDROOMS

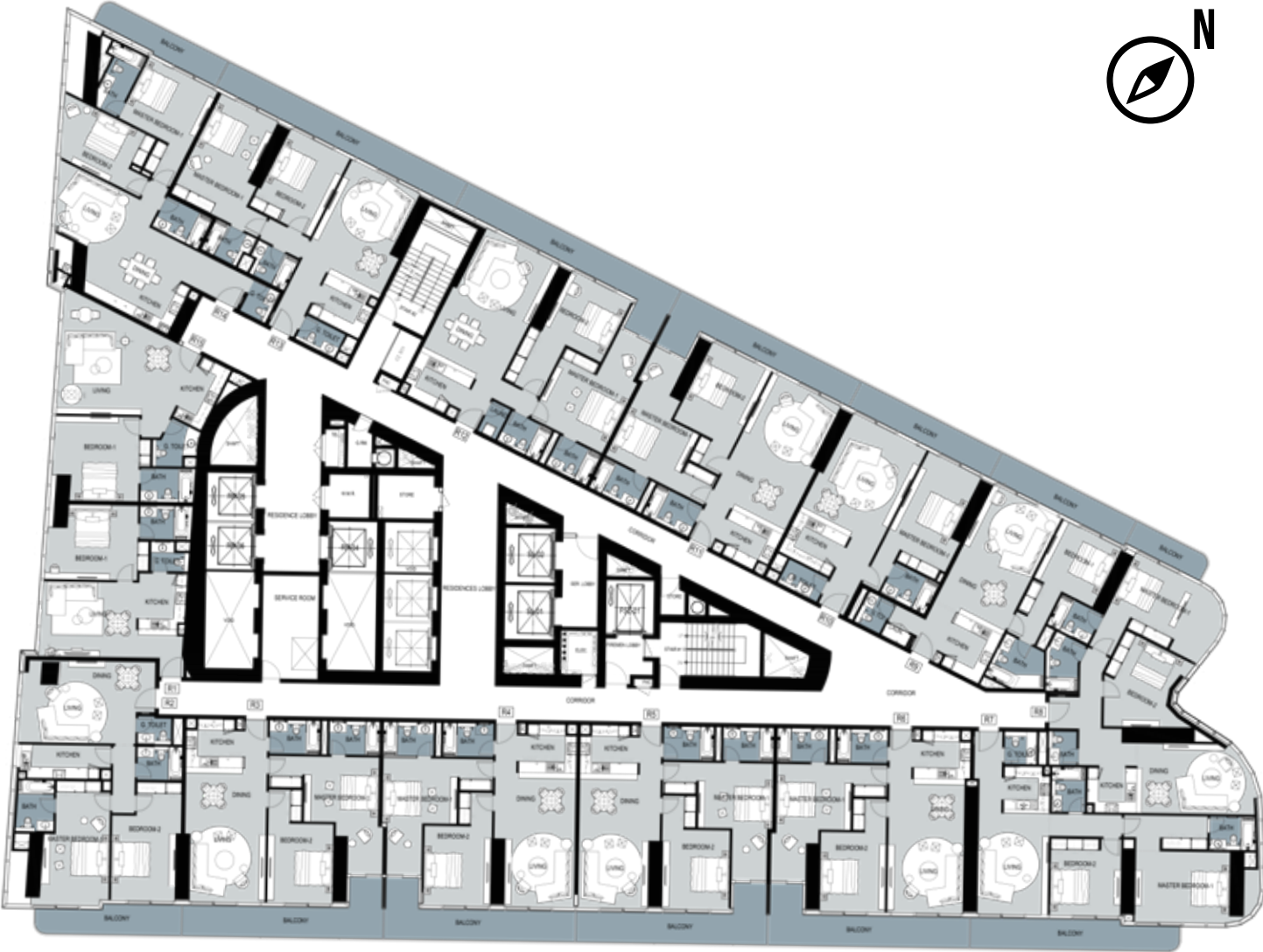
UNIT AREA	BALCONY	TOTAL
1,475 sqft	110 sqft	1,585 sqft



Unless stated otherwise, all accessories and interior finishes such as wallpaper, chandeliers, furniture, electronics, white goods, curtains, hard and soft landscaping, pavements, features, swimming pool(s) and other elements displayed in the brochure, or within the show apartment or between the plot boundary and the unit, are not part of the standard unit and are shown for illustrative purposes only.



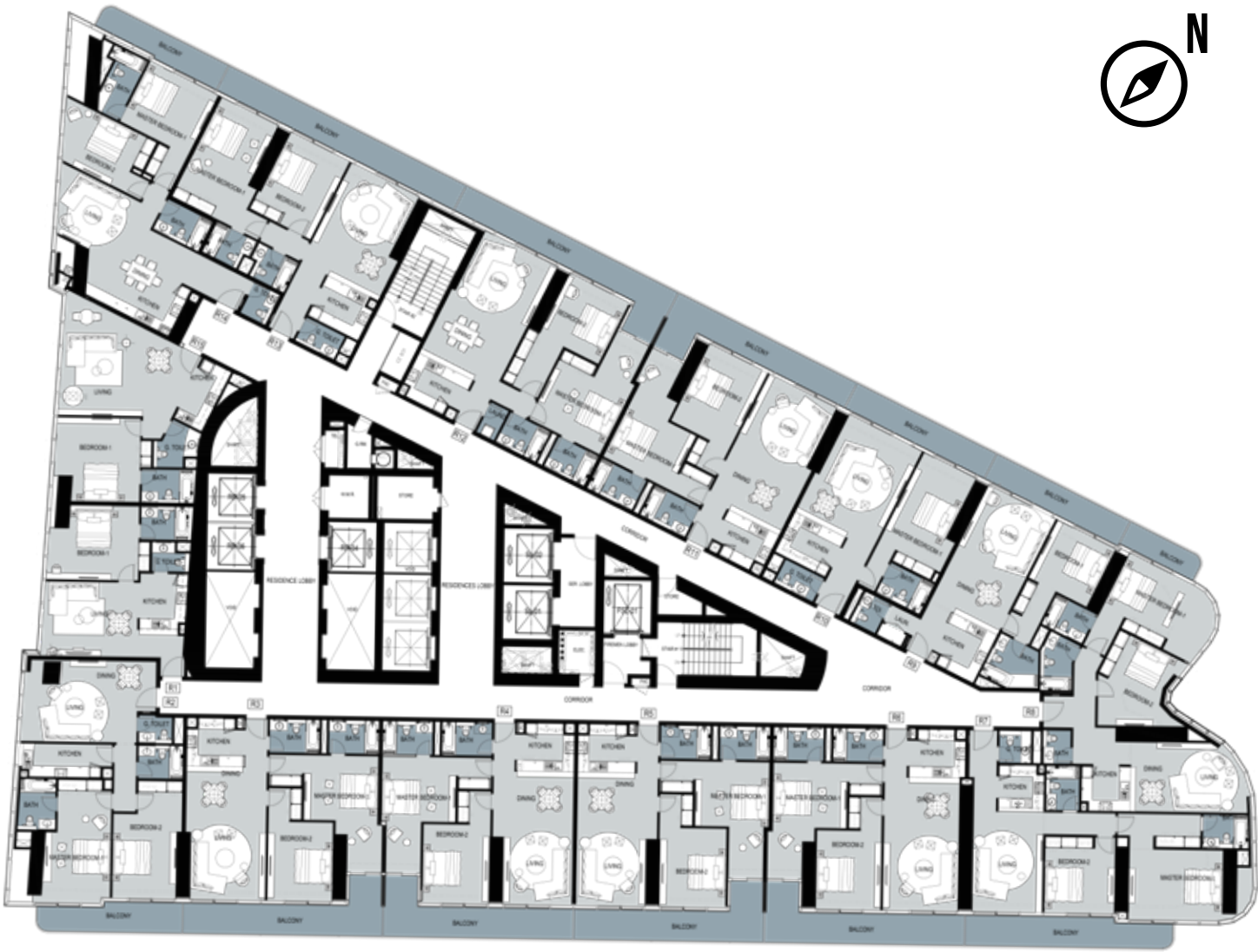
# TYPICAL FLOOR PLAN FLOOR 26



Unless stated otherwise, all accessories and interior finishes such as wallpaper, chandeliers, furniture, electronics, white goods, curtains, hard and soft landscaping, pavements, features, swimming pool(s) and other elements displayed in the brochure, or within the show apartment or between the plot boundary and the unit, are not part of the standard unit and are shown for illustrative purposes only.



# TYPICAL FLOOR PLAN FLOOR 28 - 35



Unless stated otherwise, all accessories and interior finishes such as wallpaper, chandeliers, furniture, electronics, white goods, curtains, hard and soft landscaping, pavements, features, swimming pool(s) and other elements displayed in the brochure, or within the show apartment or between the plot boundary and the unit, are not part of the standard unit and are shown for illustrative purposes only.



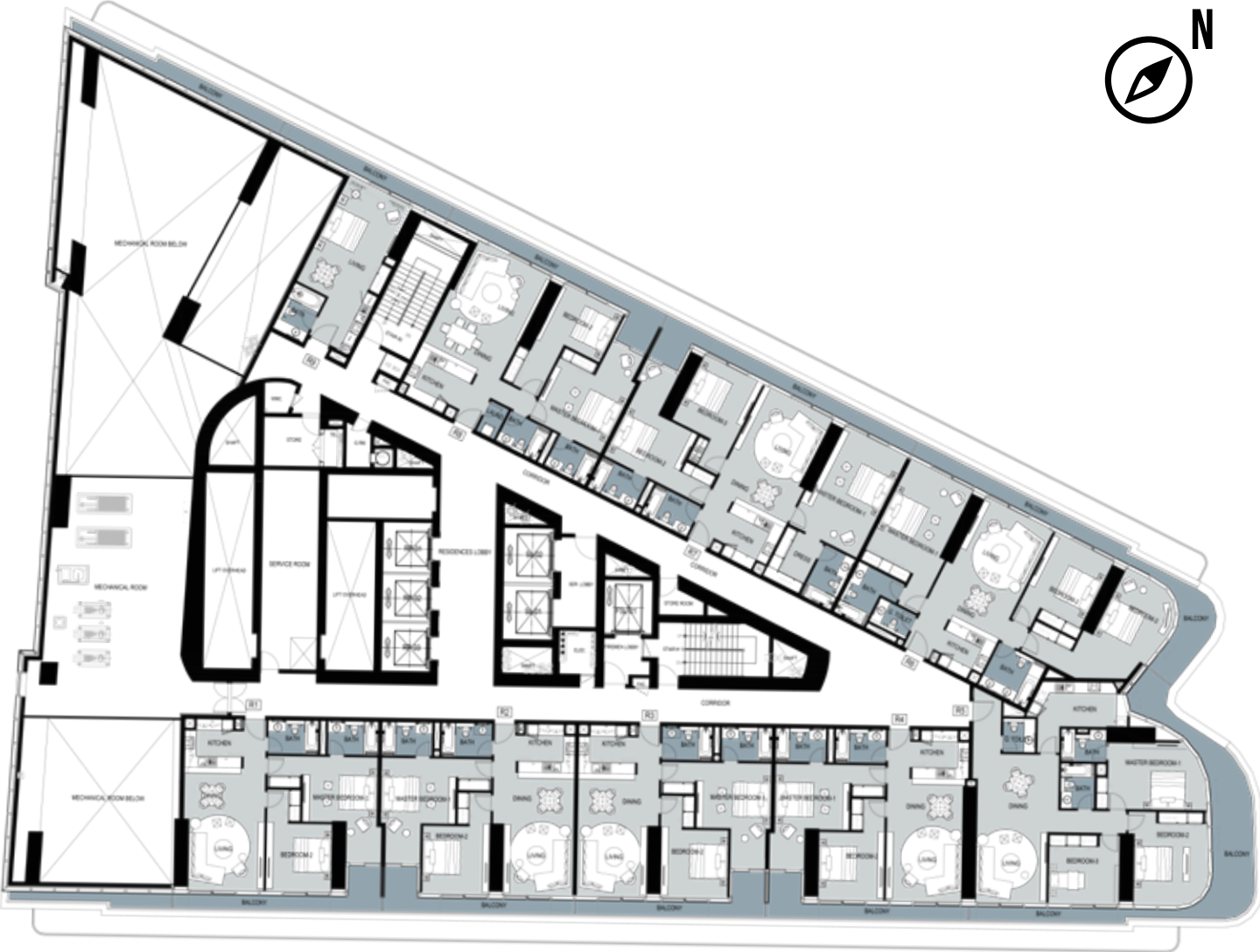
# TYPICAL FLOOR PLAN FLOOR 36



Unless stated otherwise, all accessories and interior finishes such as wallpaper, chandeliers, furniture, electronics, white goods, curtains, hard and soft landscaping, pavements, features, swimming pool(s) and other elements displayed in the brochure, or within the show apartment or between the plot boundary and the unit, are not part of the standard unit and are shown for illustrative purposes only.



# TYPICAL FLOOR PLAN FLOOR 37



Unless stated otherwise, all accessories and interior finishes such as wallpaper, chandeliers, furniture, electronics, white goods, curtains, hard and soft landscaping, pavements, features, swimming pool(s) and other elements displayed in the brochure, or within the show apartment or between the plot boundary and the unit, are not part of the standard unit and are shown for illustrative purposes only.



# TYPICAL FLOOR PLAN FLOOR 38



Unless stated otherwise, all accessories and interior finishes such as wallpaper, chandeliers, furniture, electronics, white goods, curtains, hard and soft landscaping, pavements, features, swimming pool(s) and other elements displayed in the brochure, or within the show apartment or between the plot boundary and the unit, are not part of the standard unit and are shown for illustrative purposes only.



# TYPICAL FLOOR PLAN

# FLOOR 39,41-42,44,46-52,54-55



Unless stated otherwise, all accessories and interior finishes such as wallpaper, chandeliers, furniture, electronics, white goods, curtains, hard and soft landscaping, pavements, features, swimming pool(s) and other elements displayed in the brochure, or within the show apartment or between the plot boundary and the unit, are not part of the standard unit and are shown for illustrative purposes only.



# TYPICAL FLOOR PLAN FLOOR 40 AND 43



Unless stated otherwise, all accessories and interior finishes such as wallpaper, chandeliers, furniture, electronics, white goods, curtains, hard and soft landscaping, pavements, features, swimming pool(s) and other elements displayed in the brochure, or within the show apartment or between the plot boundary and the unit, are not part of the standard unit and are shown for illustrative purposes only.

# TYPICAL FLOOR PLAN FLOOR 45



Unless stated otherwise, all accessories and interior finishes such as wallpaper, chandeliers, furniture, electronics, white goods, curtains, hard and soft landscaping, pavements, features, swimming pool(s) and other elements displayed in the brochure, or within the show apartment or between the plot boundary and the unit, are not part of the standard unit and are shown for illustrative purposes only.



# TYPICAL FLOOR PLAN FLOOR 53



Unless stated otherwise, all accessories and interior finishes such as wallpaper, chandeliers, furniture, electronics, white goods, curtains, hard and soft landscaping, pavements, features, swimming pool(s) and other elements displayed in the brochure, or within the show apartment or between the plot boundary and the unit, are not part of the standard unit and are shown for illustrative purposes only.

# TYPICAL FLOOR PLAN FLOOR 56



Unless stated otherwise, all accessories and interior finishes such as wallpaper, chandeliers, furniture, electronics, white goods, curtains, hard and soft landscaping, pavements, features, swimming pool(s) and other elements displayed in the brochure, or within the show apartment or between the plot boundary and the unit, are not part of the standard unit and are shown for illustrative purposes only.



# TYPICAL FLOOR PLAN FLOOR 57 - 59



Unless stated otherwise, all accessories and interior finishes such as wallpaper, chandeliers, furniture, electronics, white goods, curtains, hard and soft landscaping, pavements, features, swimming pool(s) and other elements displayed in the brochure, or within the show apartment or between the plot boundary and the unit, are not part of the standard unit and are shown for illustrative purposes only.

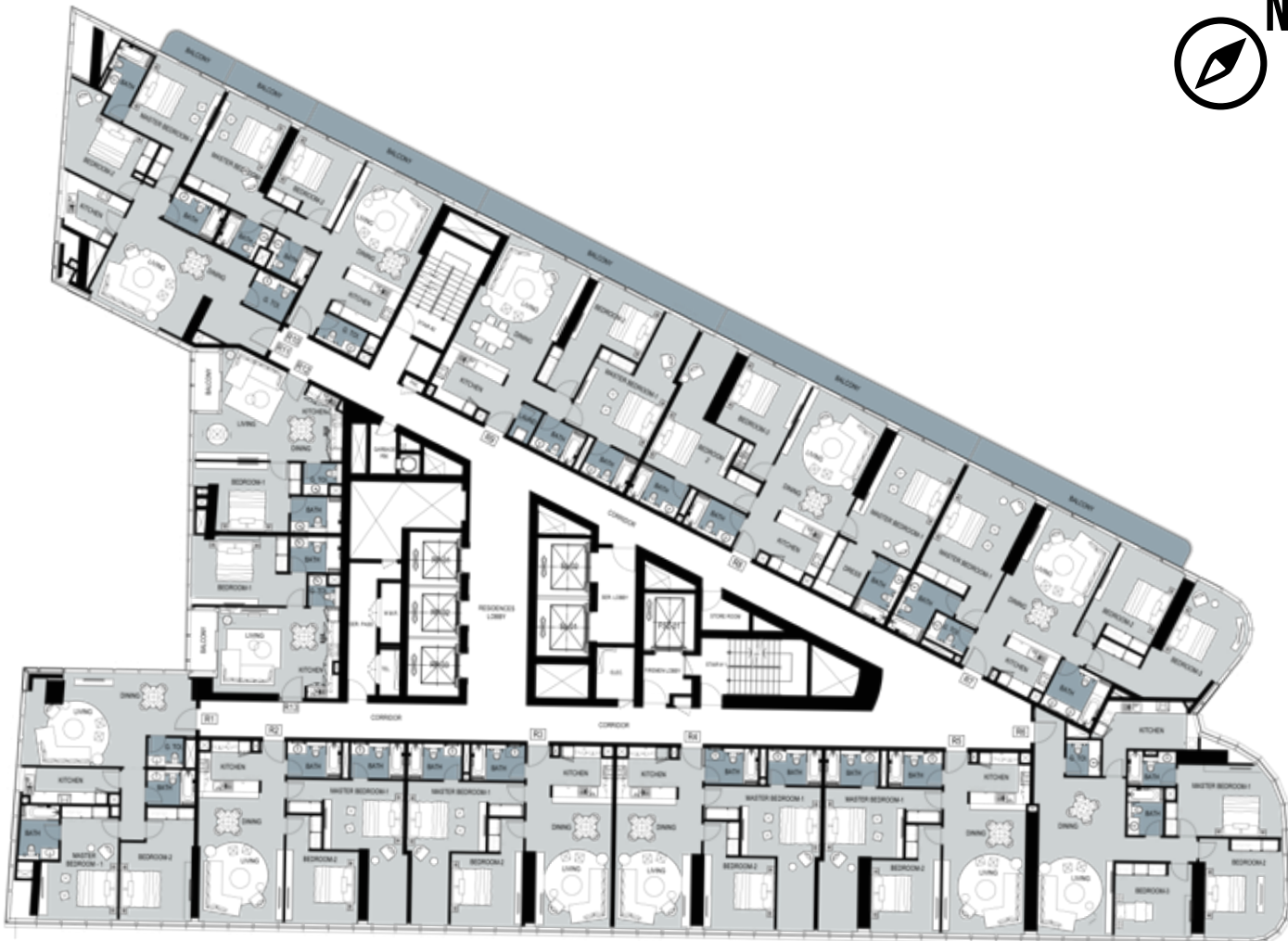
# TYPICAL FLOOR PLAN FLOOR 60 - 61



Unless stated otherwise, all accessories and interior finishes such as wallpaper, chandeliers, furniture, electronics, white goods, curtains, hard and soft landscaping, pavements, features, swimming pool(s) and other elements displayed in the brochure, or within the show apartment or between the plot boundary and the unit, are not part of the standard unit and are shown for illustrative purposes only.

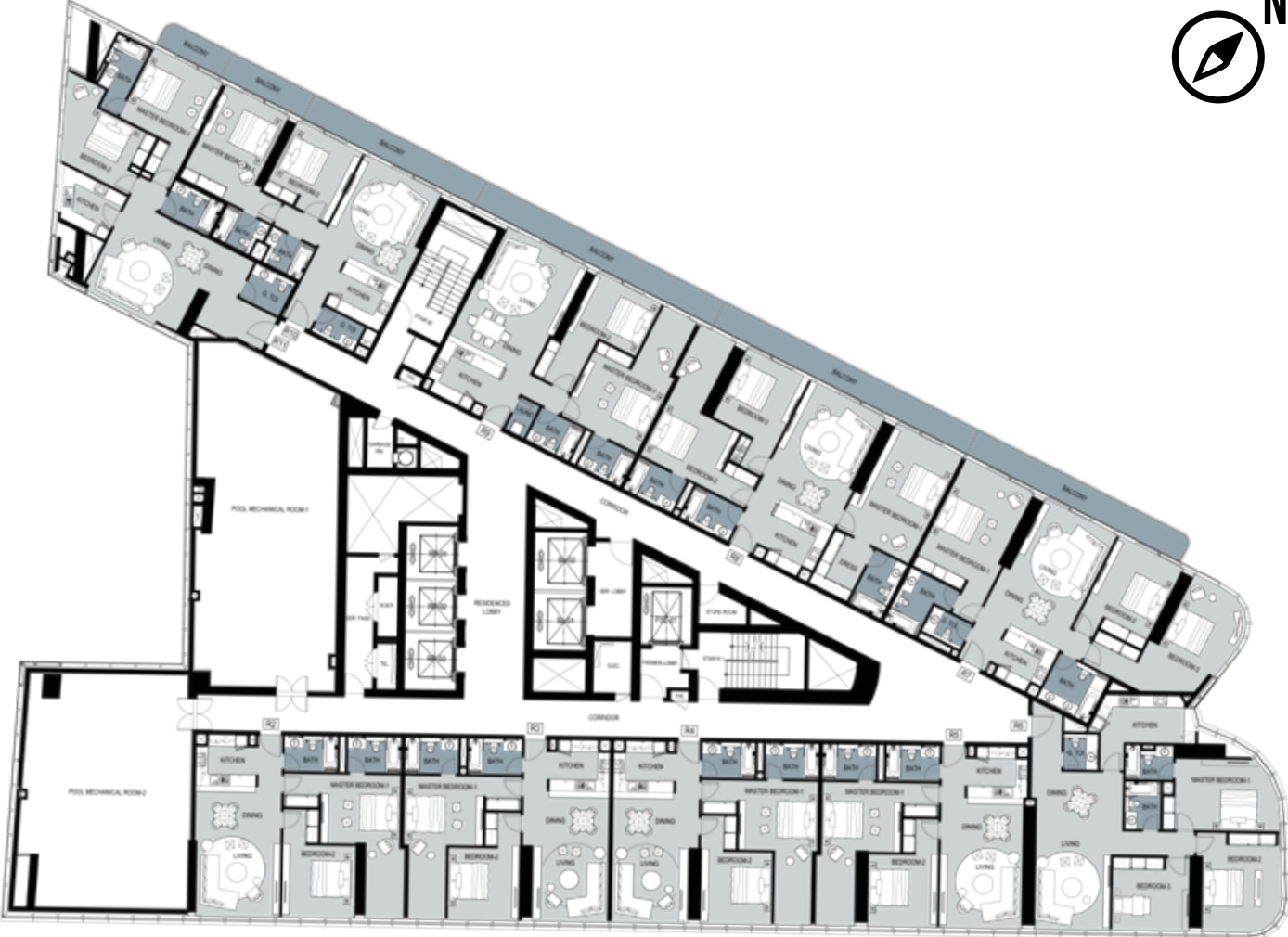


# TYPICAL FLOOR PLAN FLOOR 62



Unless stated otherwise, all accessories and interior finishes such as wallpaper, chandeliers, furniture, electronics, white goods, curtains, hard and soft landscaping, pavements, features, swimming pool(s) and other elements displayed in the brochure, or within the show apartment or between the plot boundary and the unit, are not part of the standard unit and are shown for illustrative purposes only.

# TYPICAL FLOOR PLAN FLOOR 63



Unless stated otherwise, all accessories and interior finishes such as wallpaper, chandeliers, furniture, electronics, white goods, curtains, hard and soft landscaping, pavements, features, swimming pool(s) and other elements displayed in the brochure, or within the show apartment or between the plot boundary and the unit, are not part of the standard unit and are shown for illustrative purposes only.