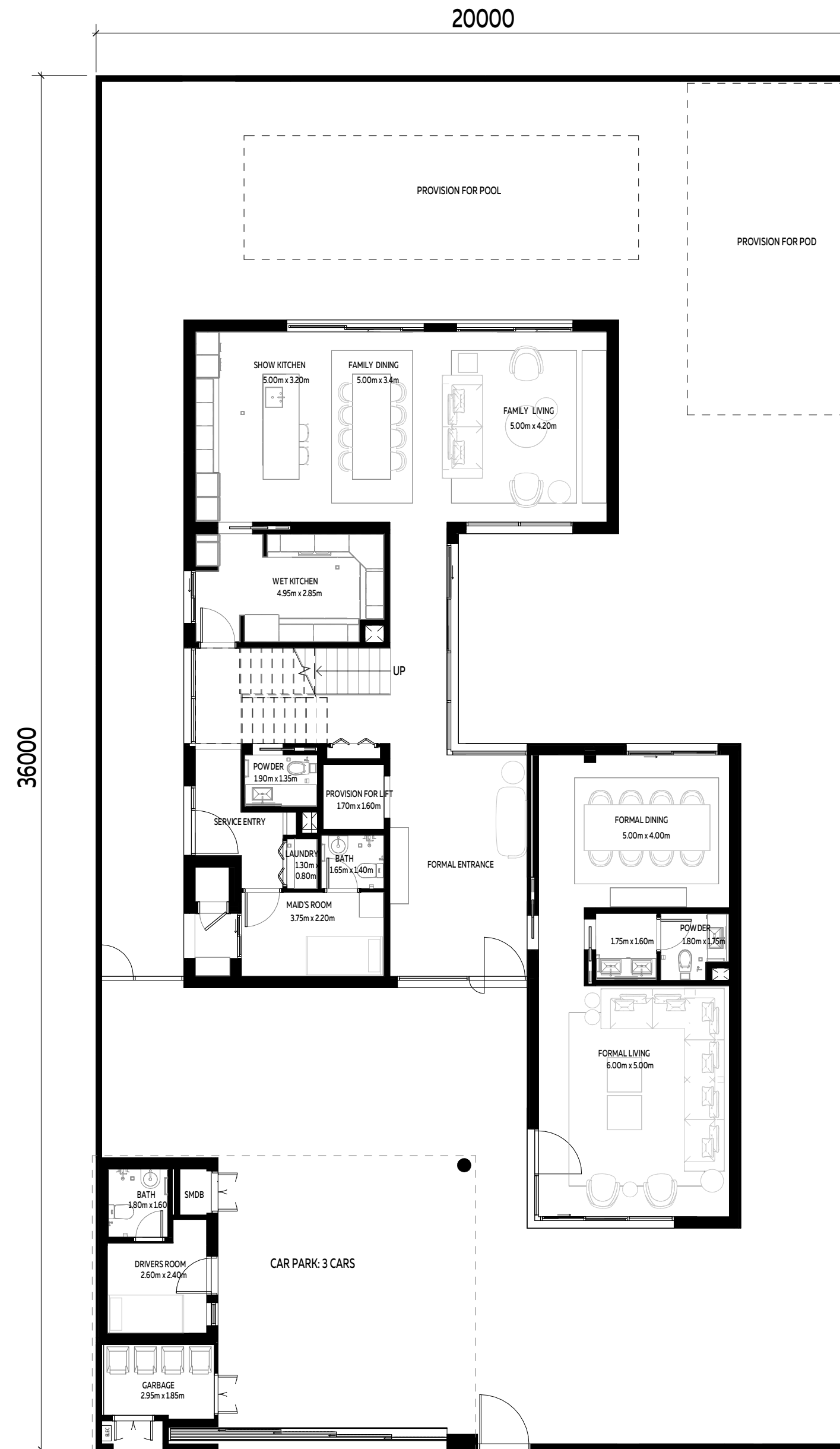
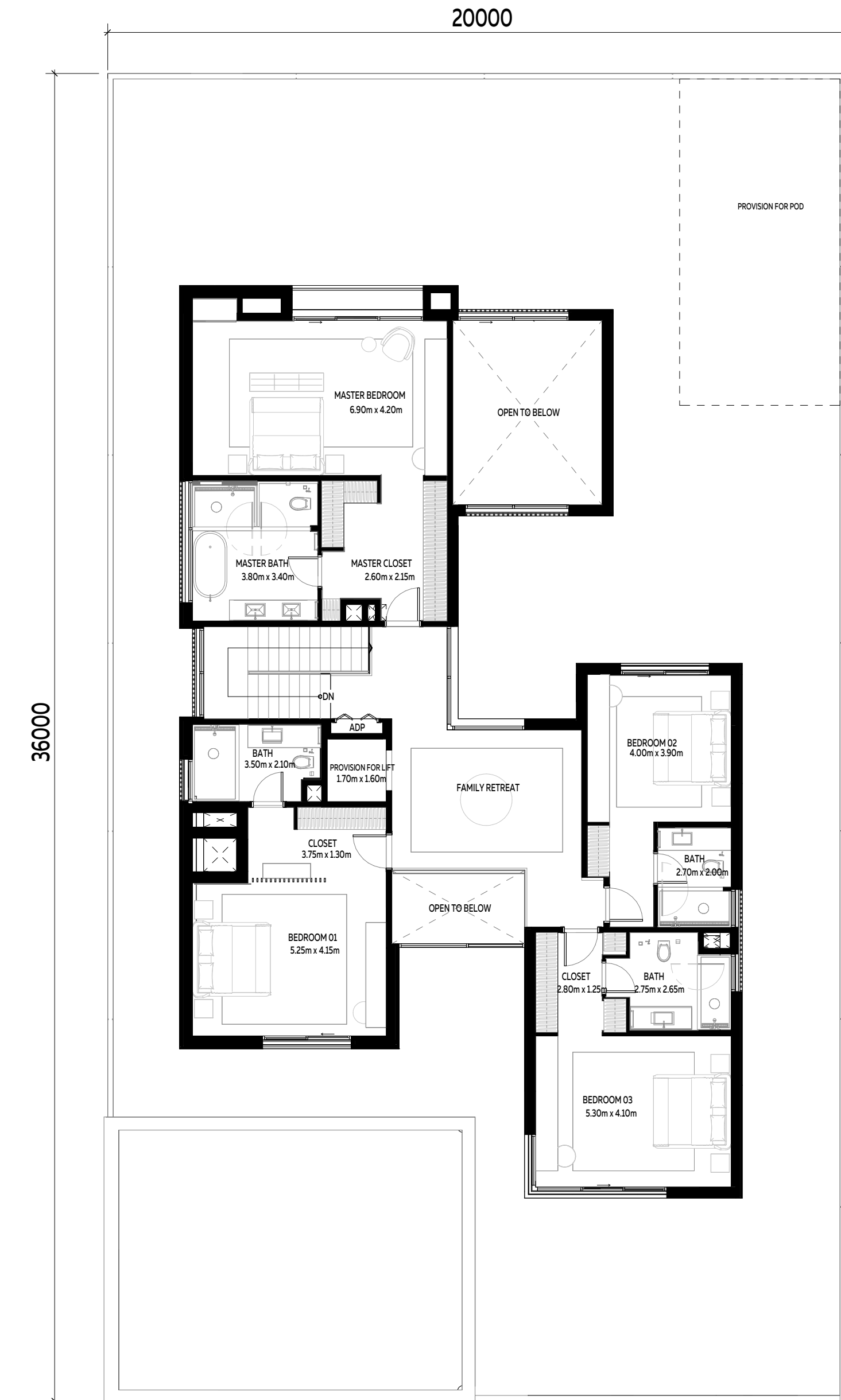


4 BEDROOMS VILLA + MAID'S ROOM

INTERNAL SELLABLE AREA: 464.7 SQM



GROUND FLOOR

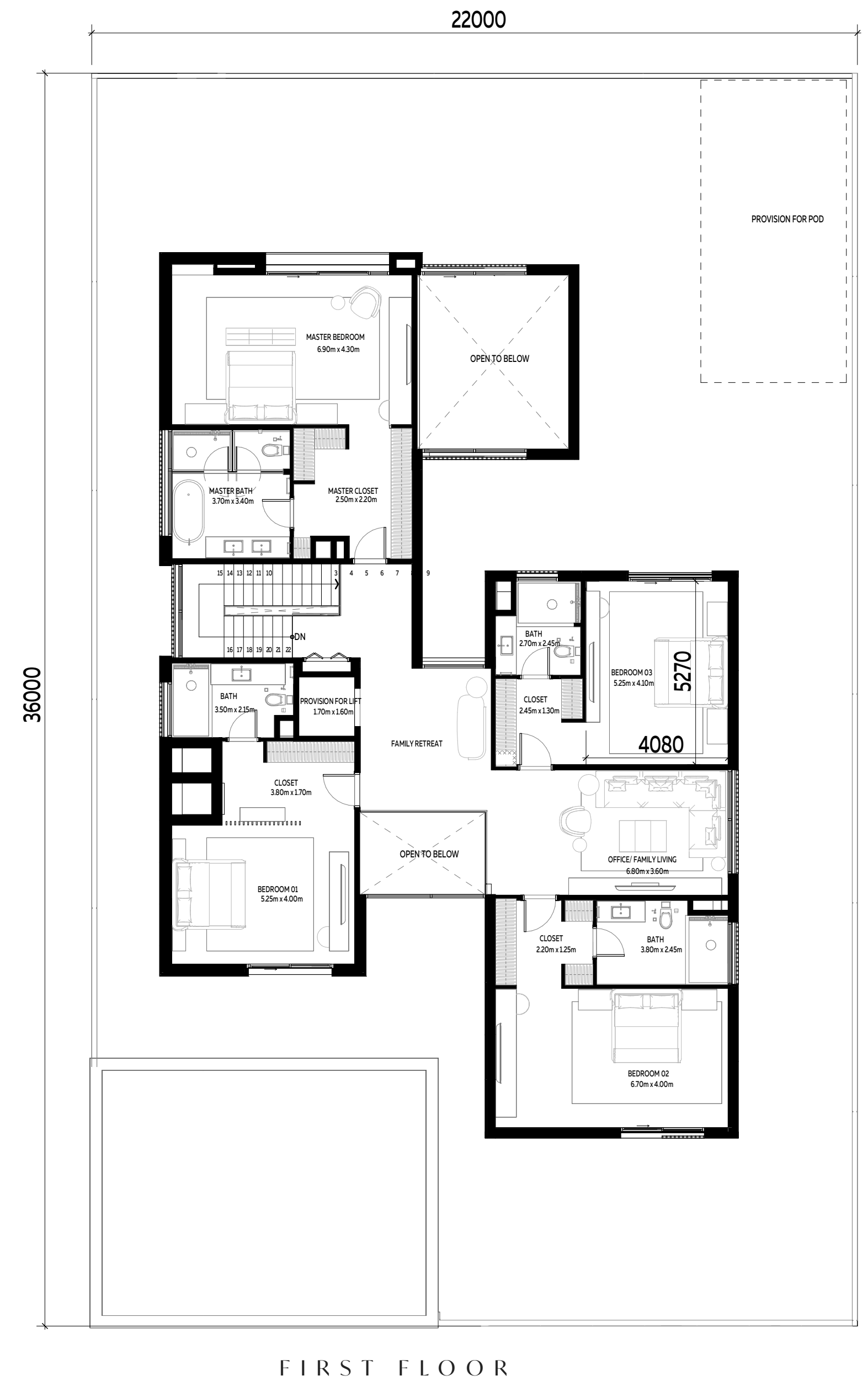
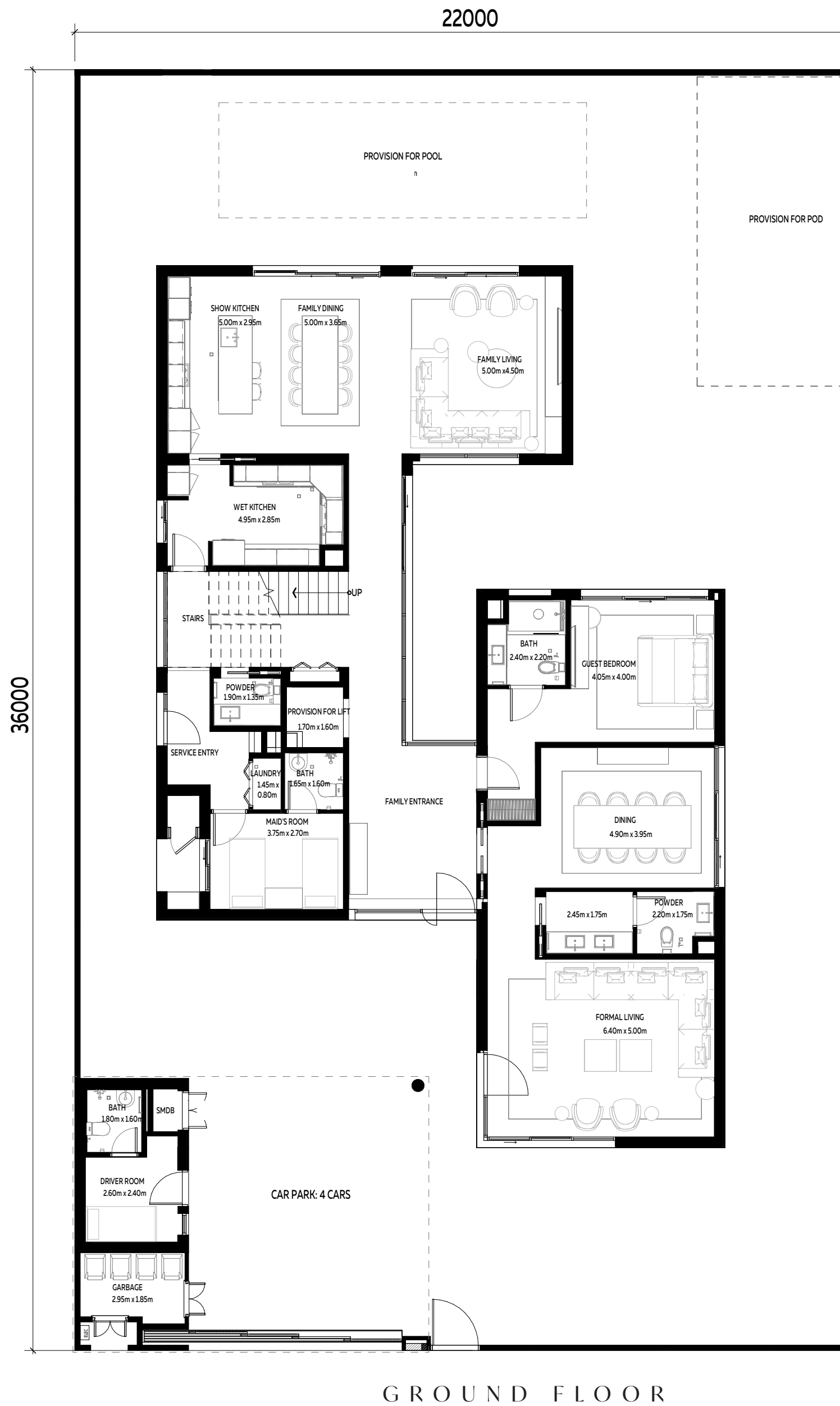


FIRST FLOOR

Disclaimer: This plan is reproduced for illustrative purposes as an example of a typical villa layout and Aldar makes no representation of warranty in relation to any of the information shown. Please note that the pool, the pod, and the elevator are additional elements that are not included in the initial price.

5 BEDROOMS VILLA + MAID'S ROOM

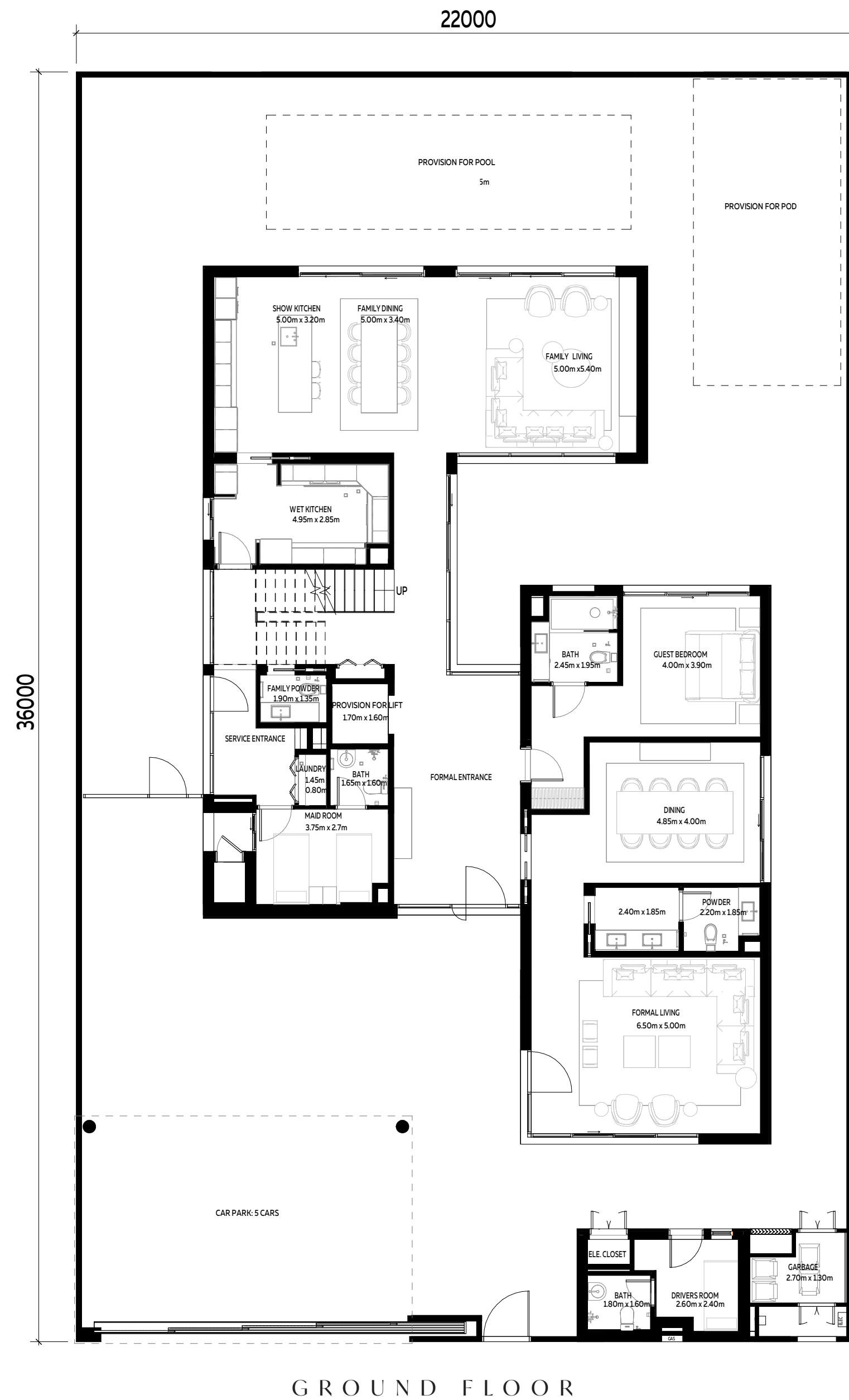
INTERNAL SELLABLE AREA: 544.6 SQM



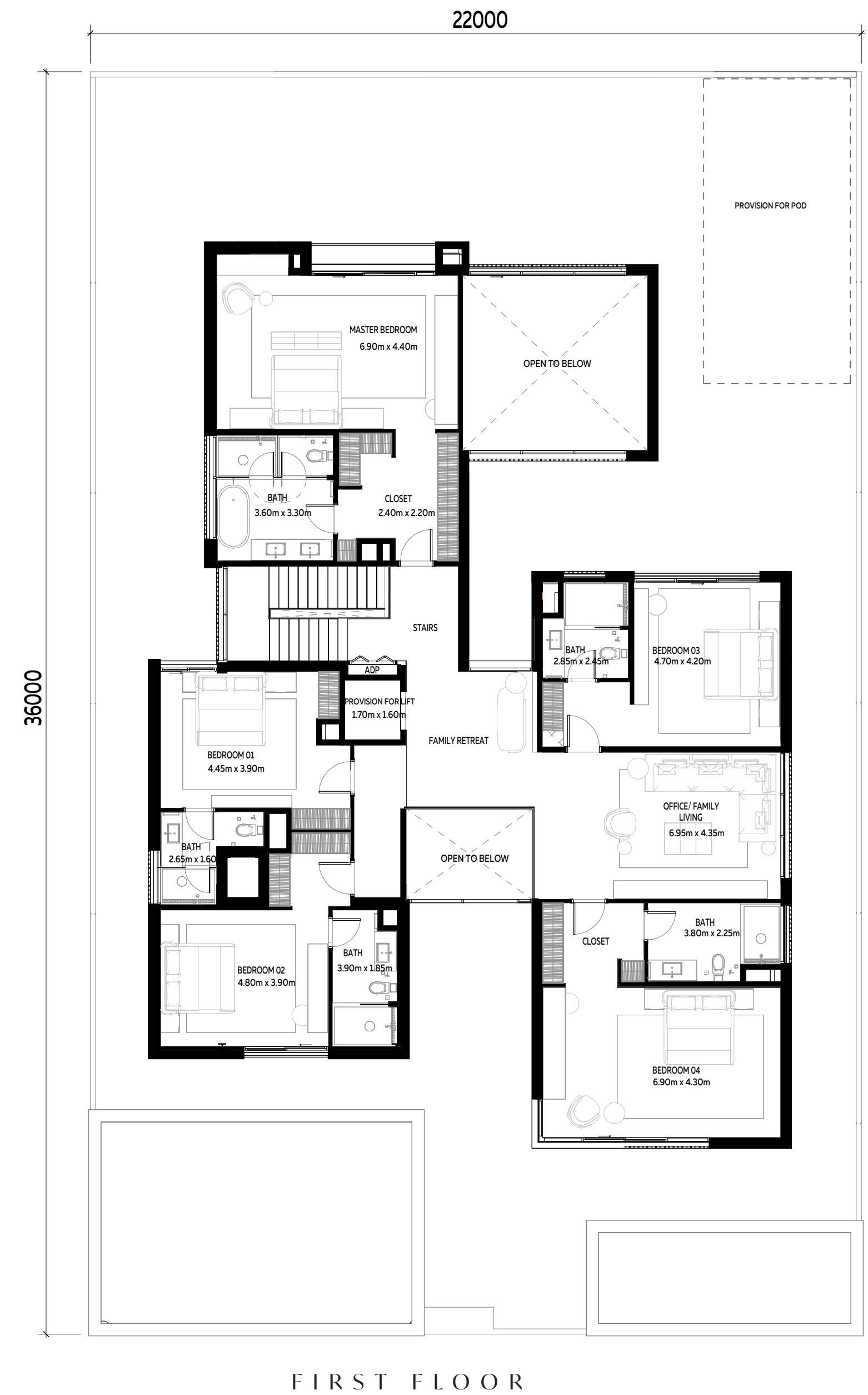
Disclaimer: This plan is reproduced for illustrative purposes as an example of a typical villa layout and Aldar makes no representation of warranty in relation to any of the information shown. Please note that the pool, the pod, and the elevator are additional elements that are not included in the initial price.

6 BEDROOMS VILLA + MAID'S ROOM

INTERNAL SELLABLE AREA: 591.4 SQM



GROUND FLOOR

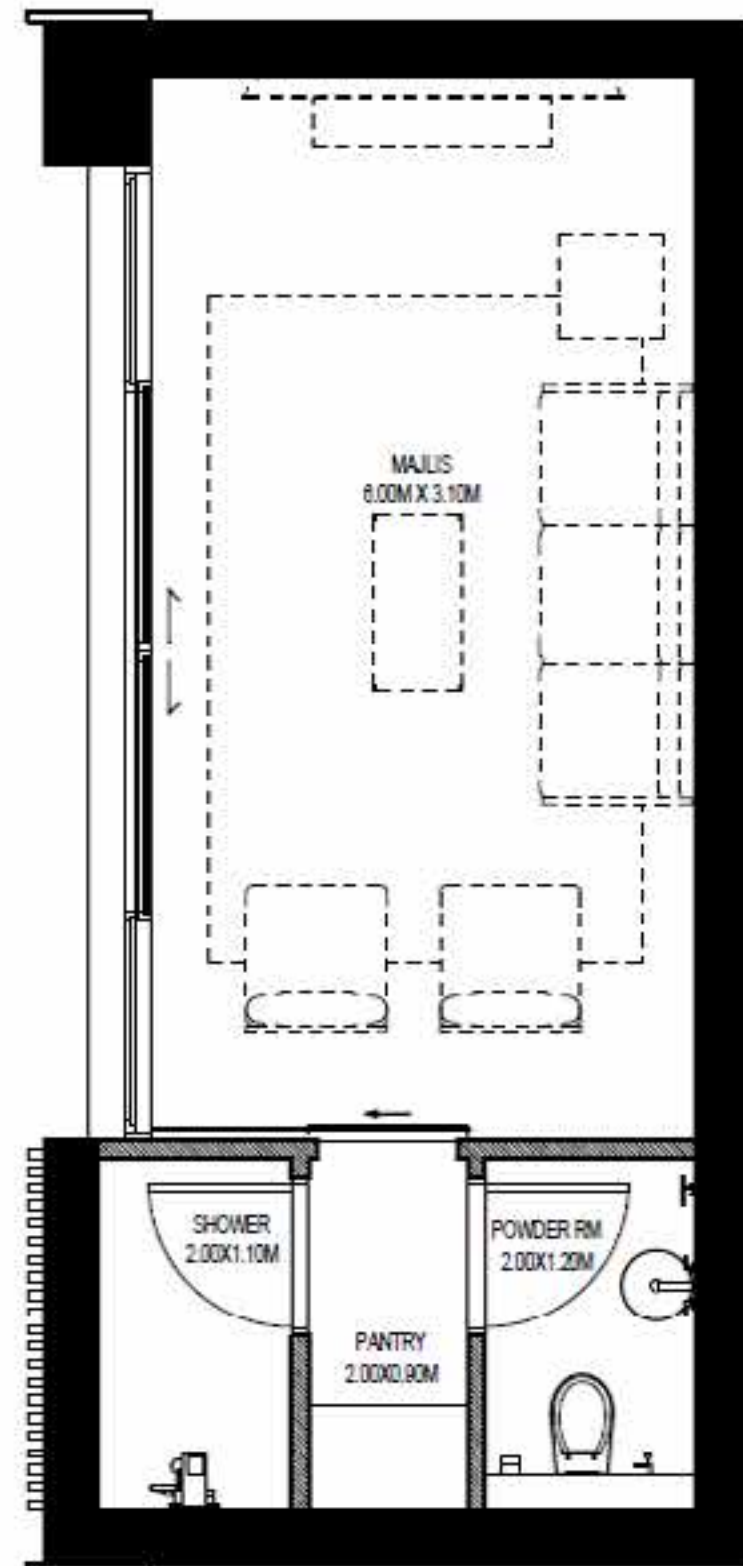


FIRST FLOOR

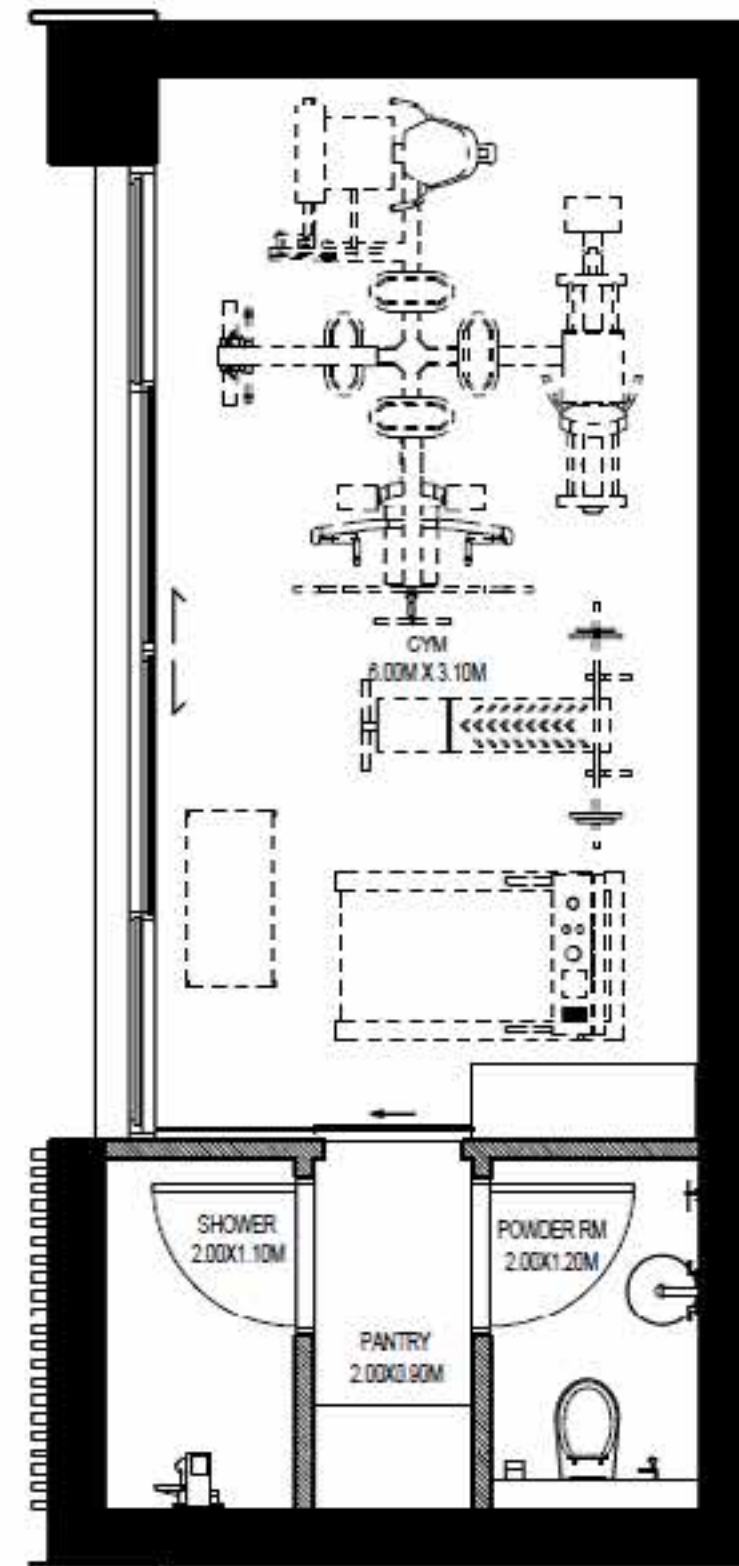
Disclaimer: This plan is reproduced for illustrative purposes as an example of a typical villa layout and Aldar makes no representation of warranty in relation to any of the information shown. Please note that the pool, the pod, and the elevator are additional elements that are not included in the initial price.

POD TYPE 1 : MULTIPURPOSE SPACE - POTENTIAL USES

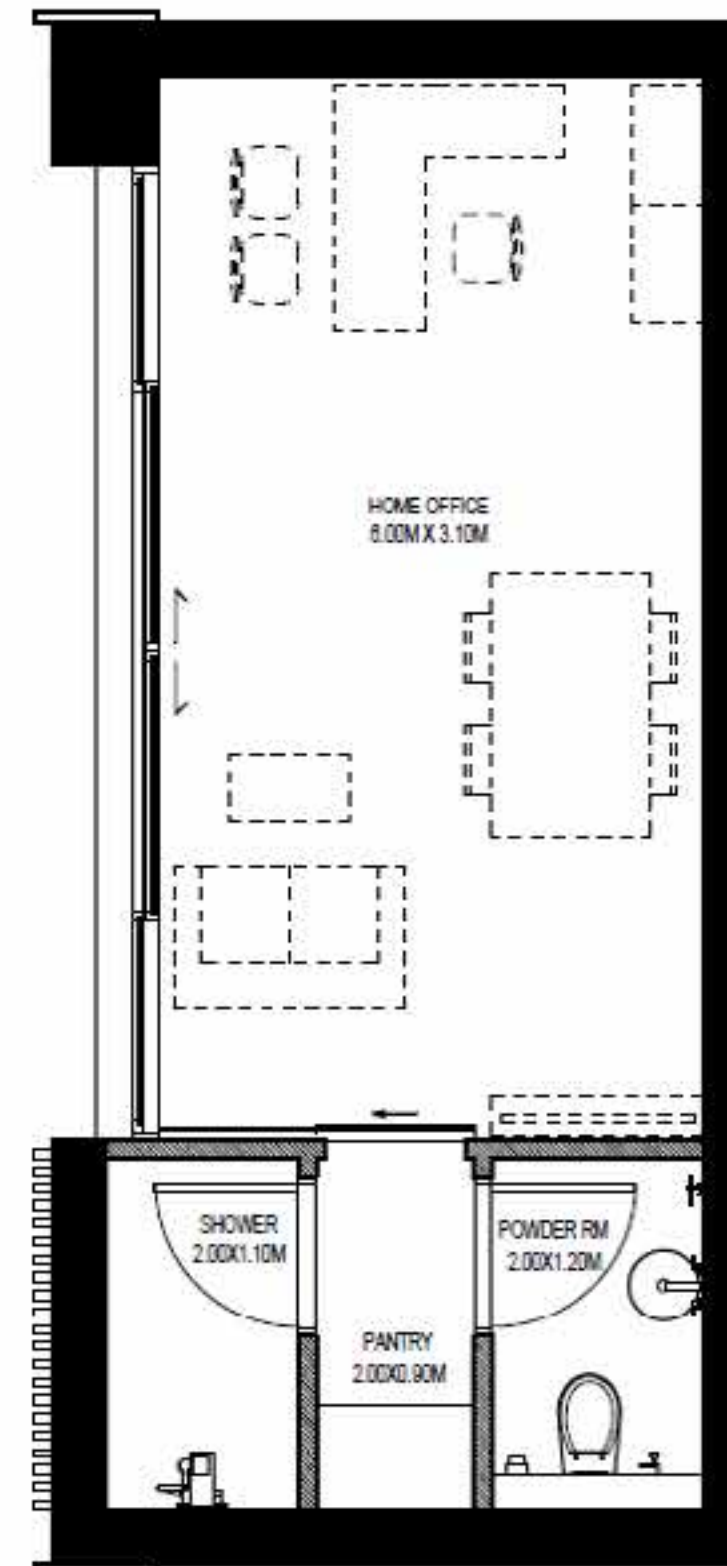
GSA 35 SQM



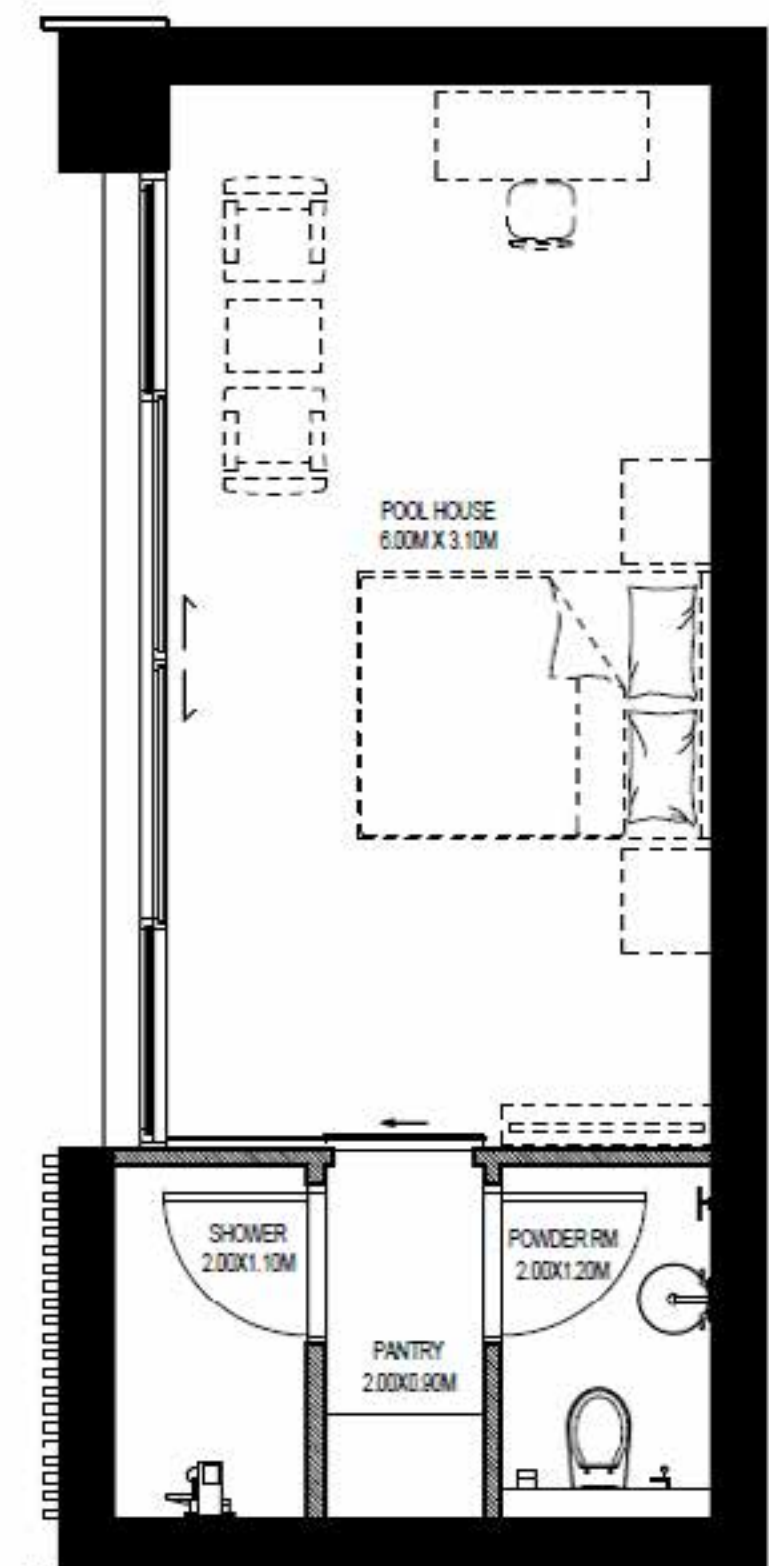
MAJLIS LAYOUT



GYM LAYOUT



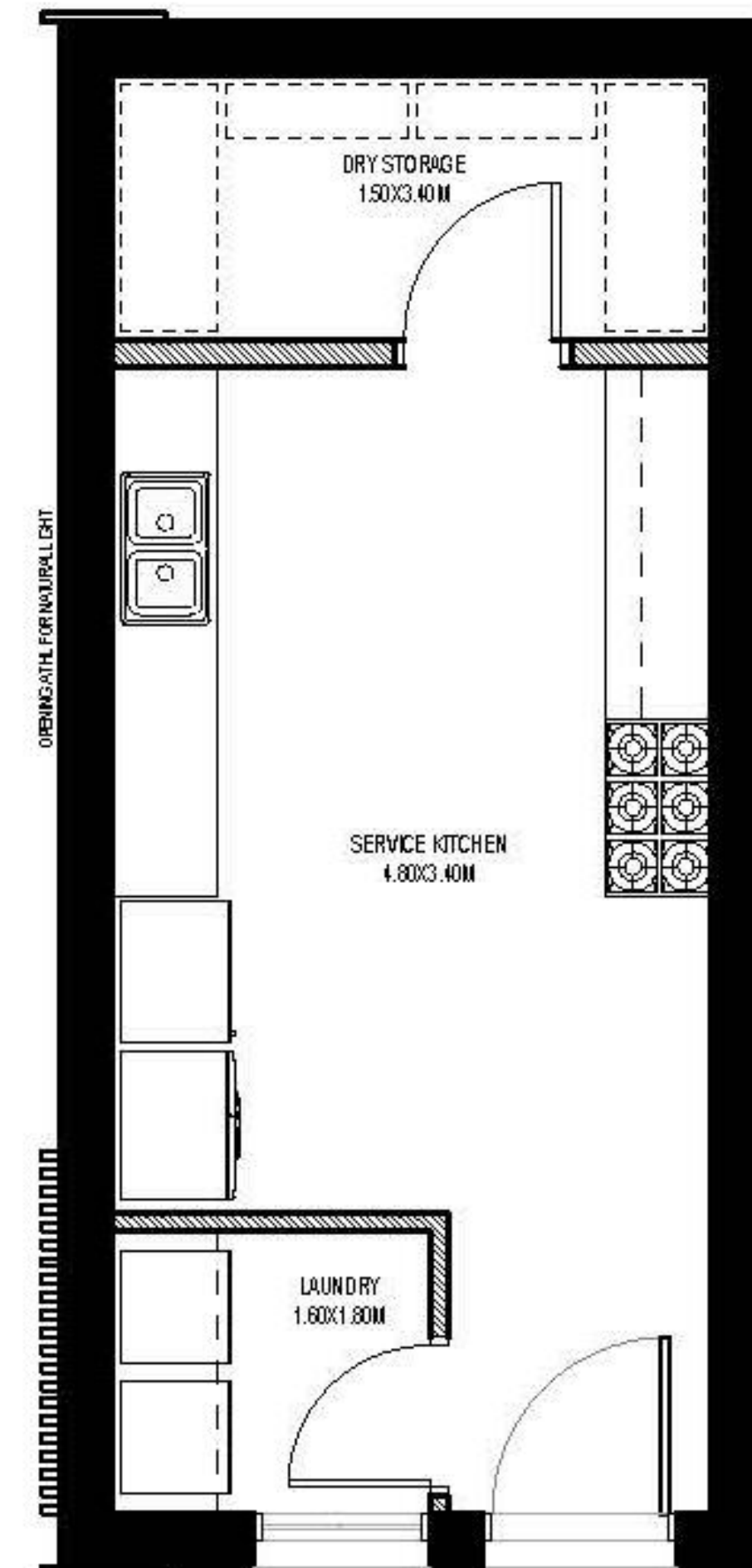
HOME OFFICE



POOL HOUSE

POD TYPE 2 : KITCHEN

GSA 35 SQM



KITCHEN POD