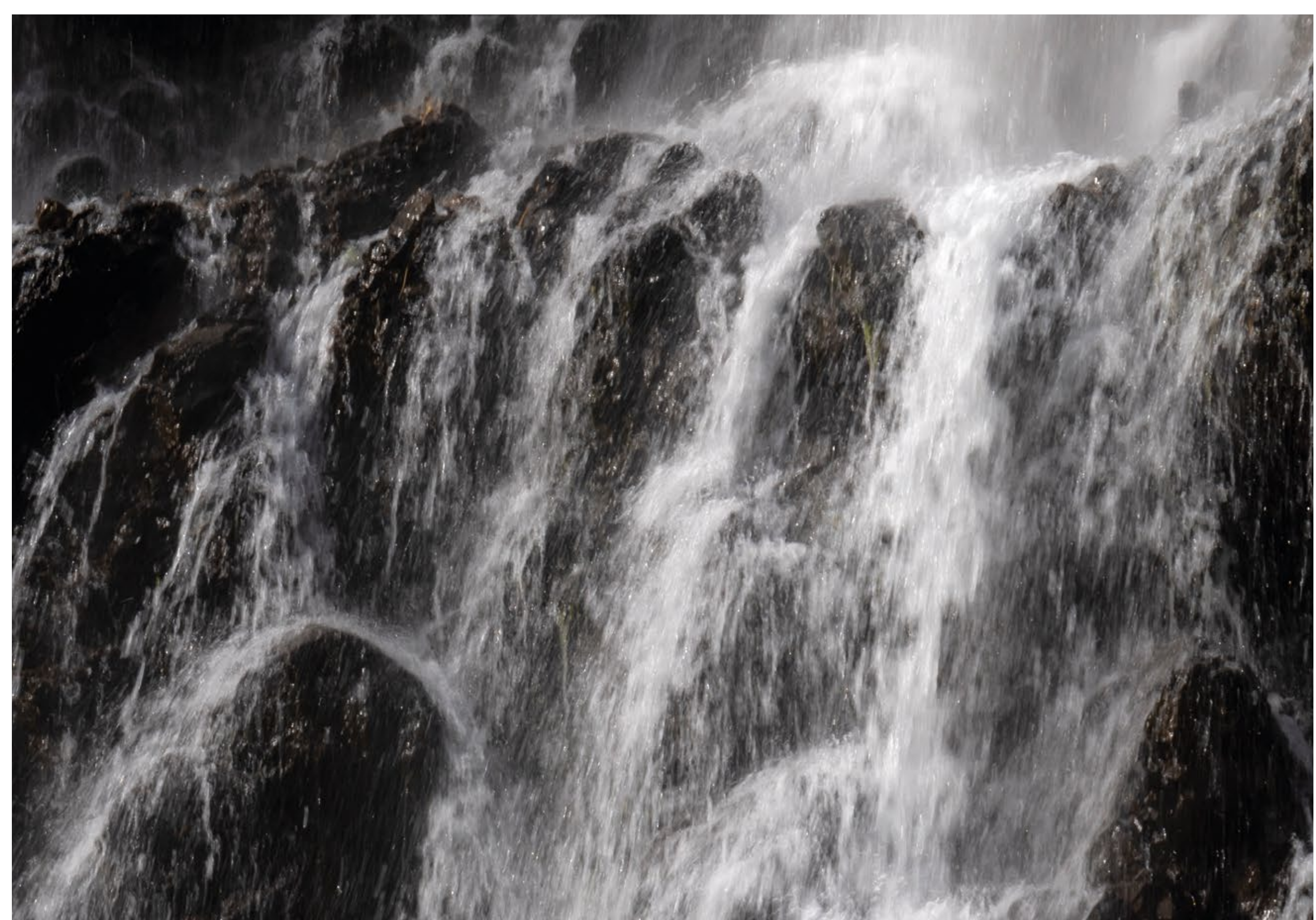




KYOTO

BY ORO24

EDITION 2023 N°5



KYOTO

BY ORO24



Your calm mind is the ultimate
weapon against your challenges.

-BRYANT MCGILL

Dubai



A wide-angle photograph of the Dubai skyline at dusk. The Burj Khalifa is the most prominent feature on the right side, reaching towards a cloudy, twilight sky. The water of the Dubai Marina is in the foreground, reflecting the city lights. The overall color palette is dominated by blues and greys, with some warm lights from the buildings.

دبي

The global epicenter.

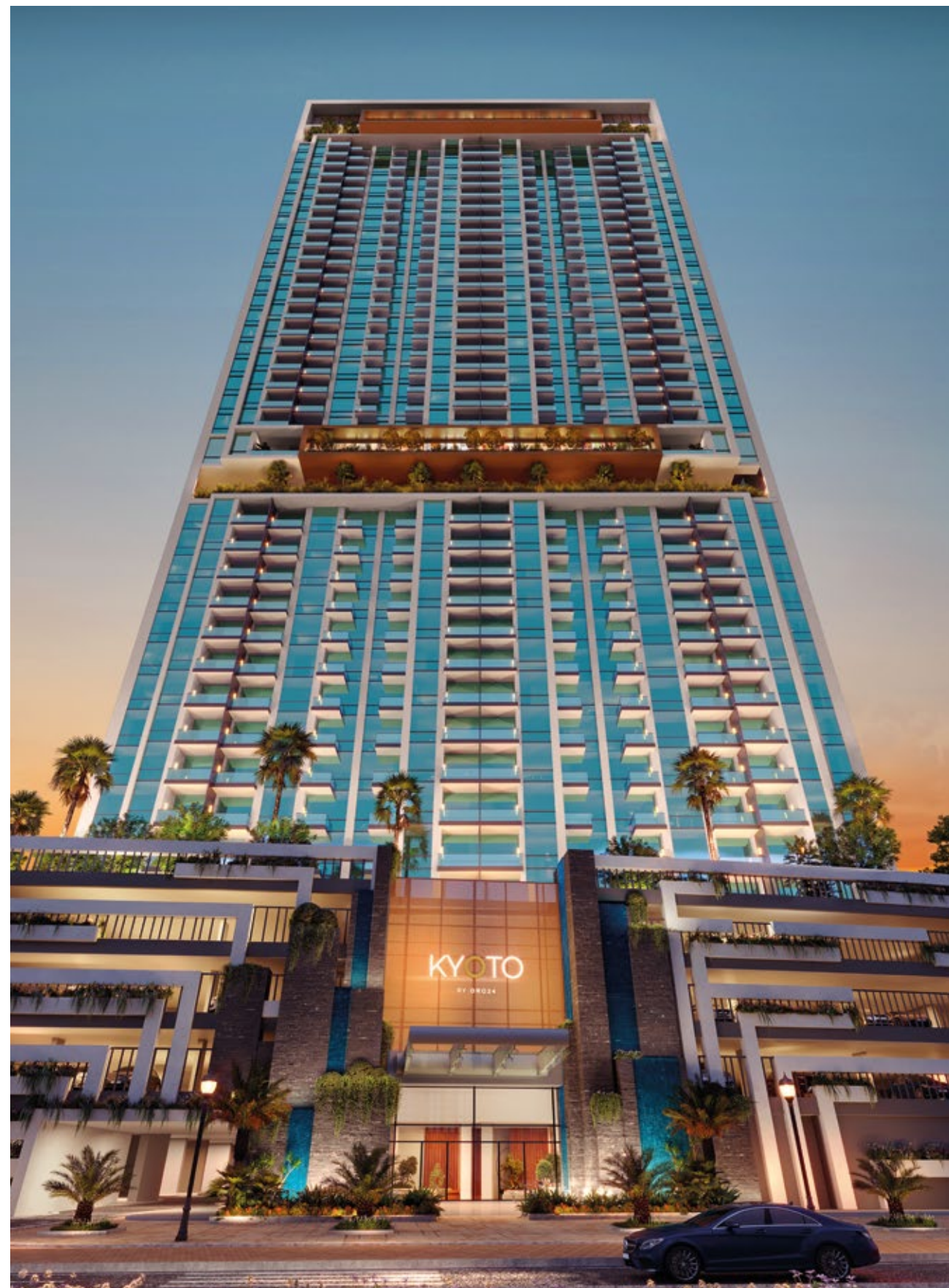
Immerse yourself in
a sanctuary of calmness





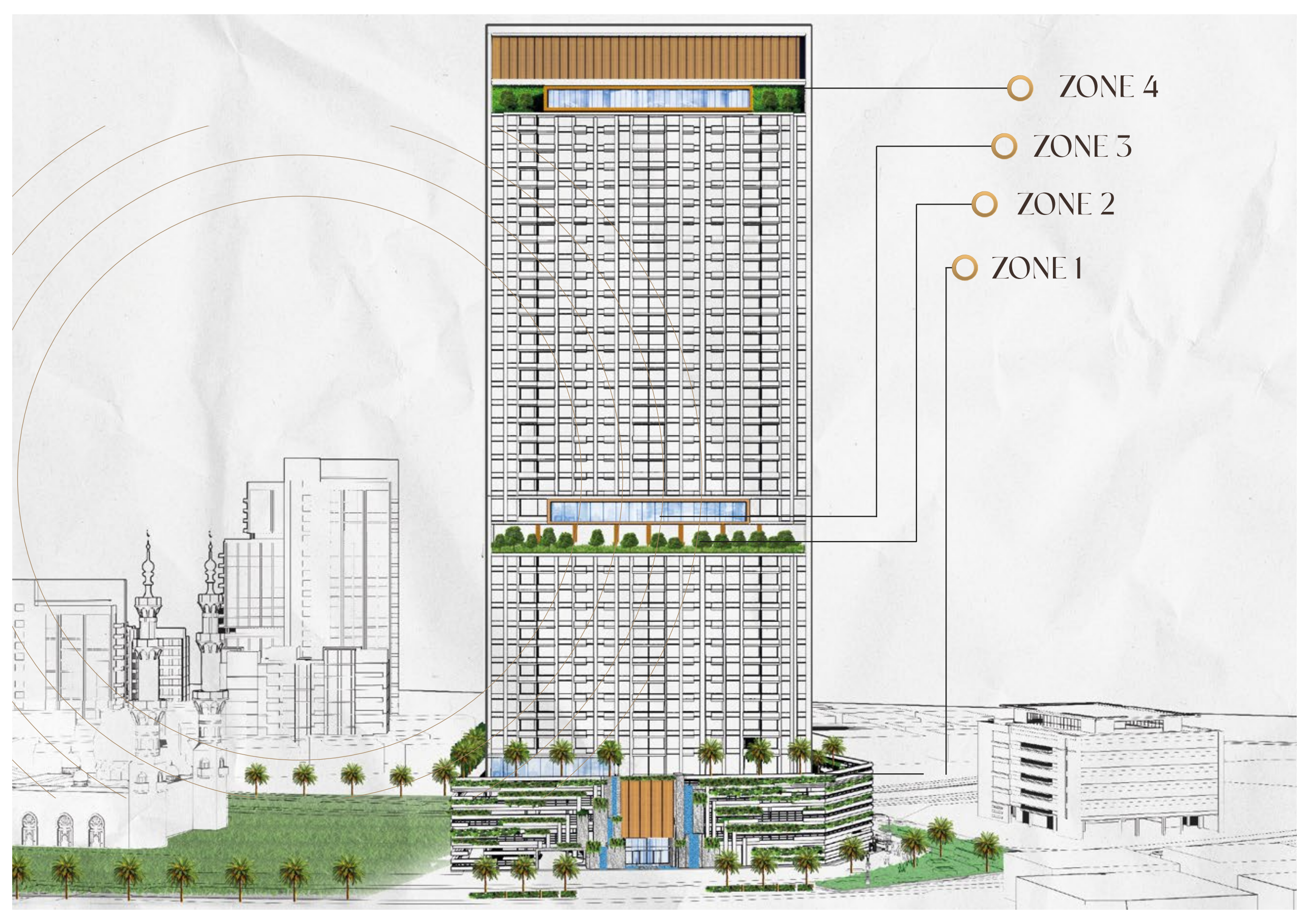
KYOTO

BY ORO24



Welcome to Kyoto living





○ ZONE 4

○ ZONE 3

○ ZONE 2

○ ZONE 1



CURATED
COMMUNITY
LIVING

Step into a world where time slows down



40 METER
INFINITY POOL



LANDSCAPE POOL
DECK



CABANA
SEATING



OUTDOOR
CINEMA



KIDS
POOL



RAIN SHOWER
LOUNGE



MEDITATION
ZONE



SQUASH
COURT



RAINFOREST
DINING



HEALTH
CLUB



YOGA
DECK



ROOF TOP
LOUNGE



OBSERVATORY
LOUNGE



PARTY
HALL



BUSINESS
CENTER



LIBRARY



DRIVE-IN ENTRANCE /
DROP OFF



GRAND ENTRANCE
LOBBY



WATER FEATURE



MOVE IN/
MOVE OUT BAY



DELIVERY WORKERS
RESTING ZONE



JOGGING
TRACK



TERRACE BROOK



PADEL ON THE
WATER



BARBECUE
DECK



LANDSCAPE



OUTDOOR KIDS
PLAY AREA



INDOOR KIDS
PLAY AREA



VIRTUAL
GOLF



GAMING
ARCADE



BOWLING
ALLEY



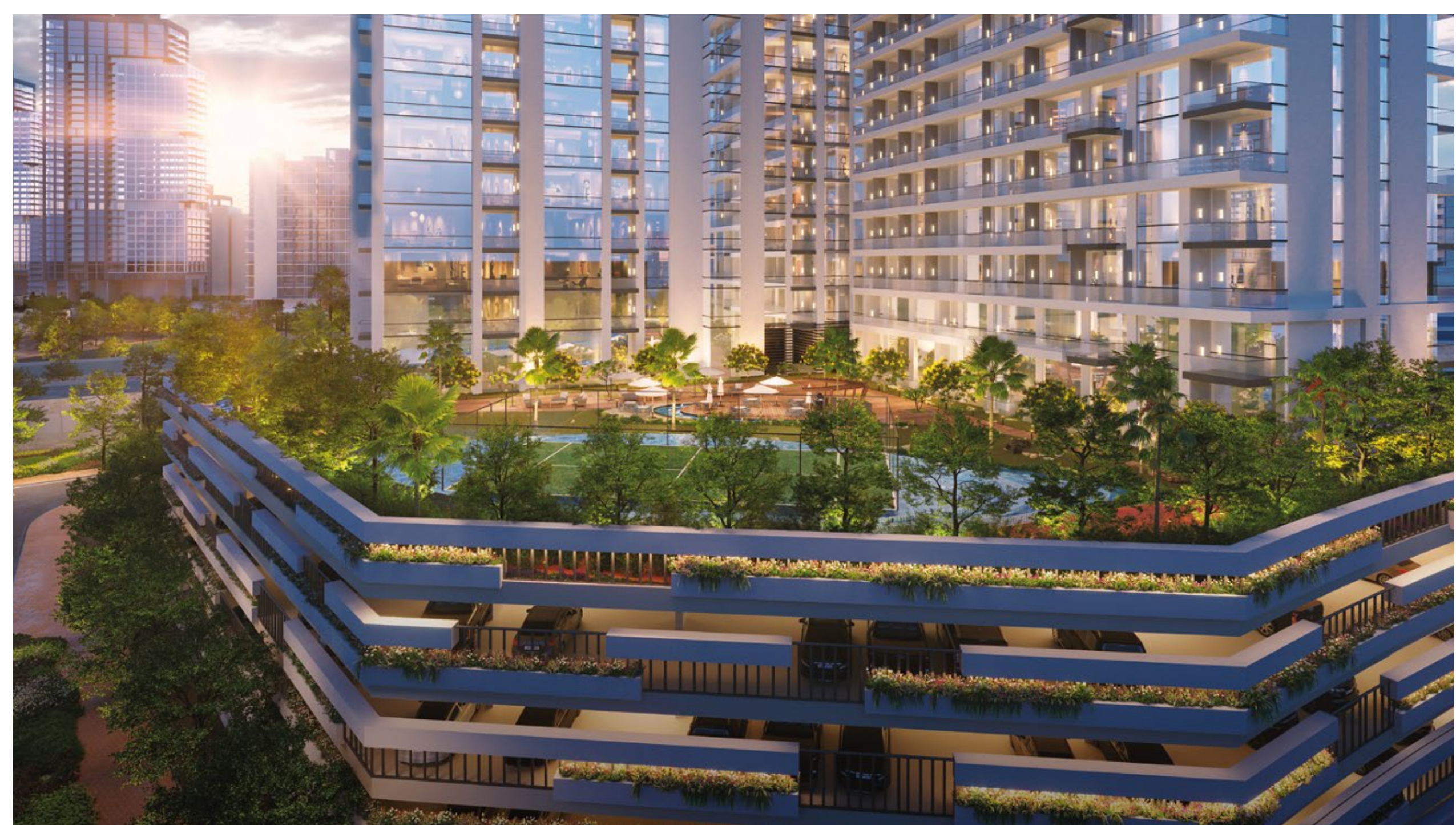
BILLIARDS



 ENTRANCE LOBBY



 LIFT LOBBY



 ZONE 1





 PADEL ON WATER



 BARBECUE DECK



 OUTDOOR KIDS PLAY AREA



 INDOOR KIDS PLAY



○ ARCADE, POOL TABLE & BOWLING



 VIRTUAL GOLF



○ ZONE 2





○ 40 METER INFINITY POOL



 LANDSCAPE POOL DECK



 KIDS POOL



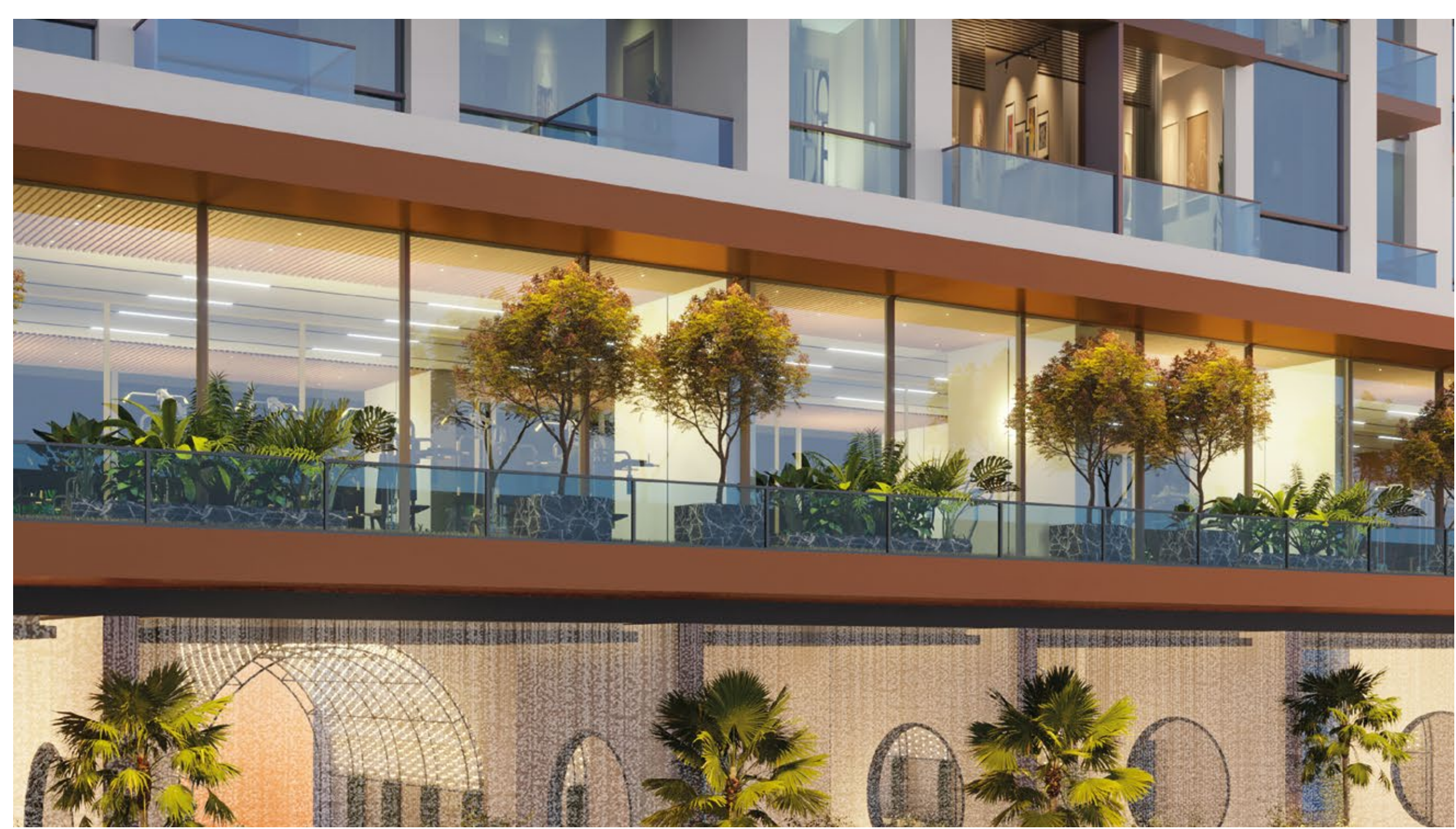
 RAINSHOWER SEATING



MEDITATION ZONE



 RAINFOREST DINING



○ ZONE 3





HEALTH CLUB





○ ZONE 4





 PARTY HALL





 BUSINESS CENTER



KYOTO

BY ORO 24



ARJAN

CENTRALLY LOCATED



MAILLS

- MY CITY CENTRE - 5 MINS
- CIRCLE MALL - 10 MINS
- CITY CENTRE ME'AISEM - 10 MINS
- MALL OF THE EMIRATES - 15 MINS
- DUBAI HILLS MALL - 15 MINS
- MARINA MALL - 15 MINS
- AL BARSHA MALL - 15 MINS
- IBN BATTUTA MALL - 20 MINS
- NAKHEEL MALL - 20 MINS



MEDICAL FACILITIES

- NEURO SPINAL HOSPITAL - 5 MINS
- MEDICLINIC PARKVIEW HOSPITAL - 5 MINS
- ASTER CLINIC - 15 MINS
- SAUDI GERMAN HOSPITAL - 15 MINS
- AL ZAHRA HOSPITAL - 15 MINS
- MEDICLINIC MEADOWS - 20 MINS



SCHOOLS

- BLOOM WORLD ACADEMY - 5 MINS
- GEMS FOUNDERS SCHOOL - 5 MINS
- JSS INTERNATIONAL SCHOOL - 10 MINS
- SUNMARKE SCHOOL - 10 MINS
- ARCADIA SCHOOL - 10 MINS
- REPTON SCHOOL - 10 MINS
- NORD ANGLIA INTERNATIONAL SCHOOL - 10 MINS



AIRPORTS

- DUBAI INTERNATIONAL AIRPORT (DXB) - 30 MINS
- AL MAKTOUM INTERNATIONAL AIRPORT (DWC) - 30 MINS



BEACHES

- SUFOUH BEACH - 20 MINS
- MARINA BEACH - 20 MINS
- THE WALK - 25 MINS
- JBR - 25 MINS
- SUNSET BEACH - 25 MINS



COMMUNITY PARKS

- SABAT PARK - 10 MINS
- DOKHON PARK - 10 MINS
- SABAR PARK - 10 MINS
- BARSHA POND PARK - 15 MINS



MOTORWAYS

- AL HESSA ROAD - 10 MINS
- SHEIKH MOHAMMED BIN ZAYED ROAD - 10 MINS
- SHEIKH ZAYED ROAD - 20 MINS
- AL KHAIL ROAD - 10 MINS



ATTRACTIONS

- DUBAI MIRACLE GARDEN - 5 MINS
- DUBAI BUTTERFLY GARDEN - 5 MINS
- GLOBAL VILLAGE - 15 MINS

