



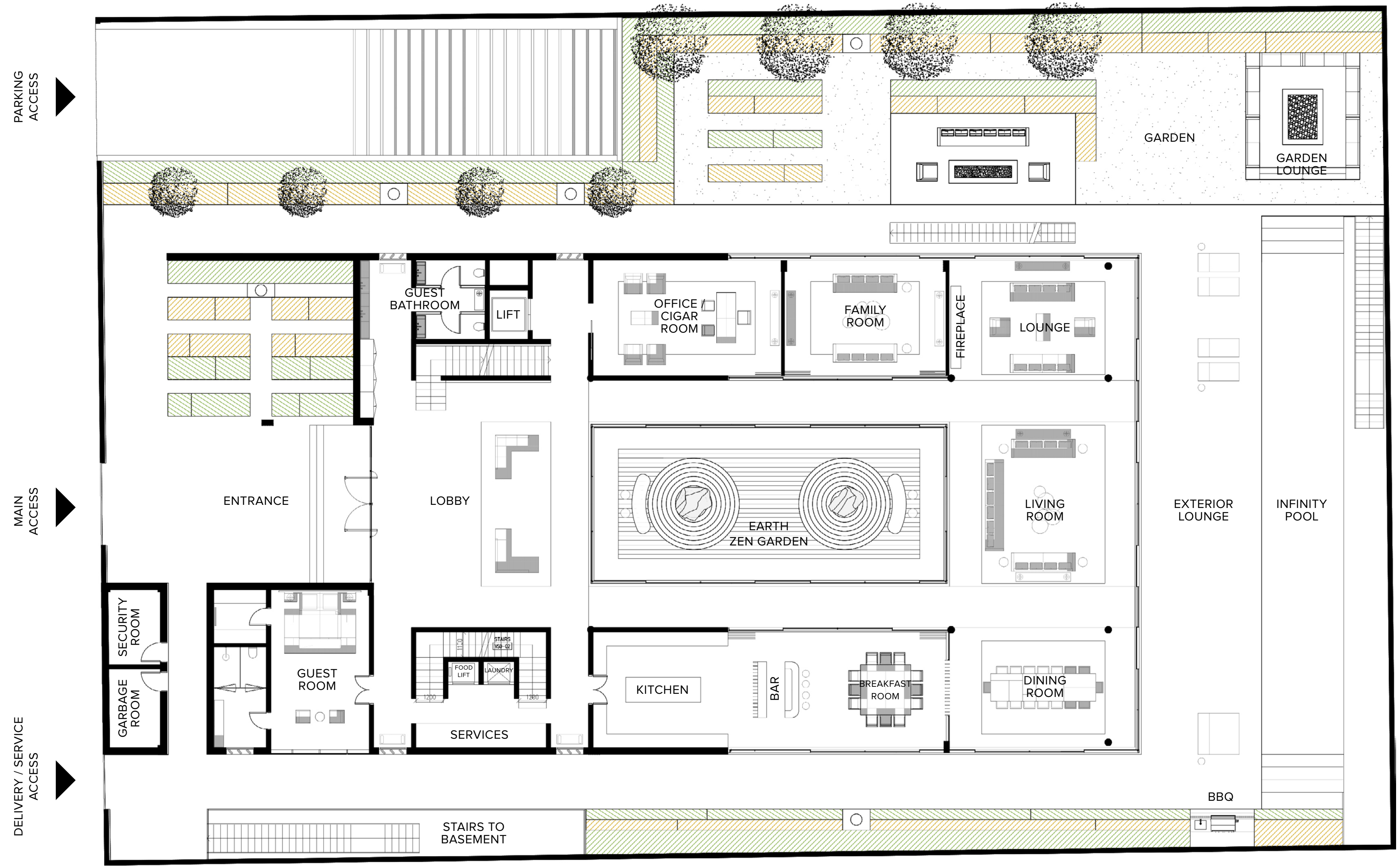
THE RITZ-CARLTON RESIDENCES

DUBAI, CREEKSIDE

EARTH MANSION

Ground Floor

INTERIOR	684.69 SQ.M / 7,369.93 SQ.FT
EXTERIOR	204.32 SQ.M / 2,199.28 SQ.FT
SERVICES	21.37 SQ.M / 230.02 SQ.FT
TOTAL AREA	910.38 SQ.M / 9,799.24 SQ.FT



DIFC Conference Centre
DIFC Gate Village - 11
Street 312, Dubai

theresidencesdubaicreek.com
info@theresidencesdubaicreek.com

The Ritz-Carlton Residences, Dubai, Creekside are not owned, developed or sold by The Ritz-Carlton Hotel Company, L.L.C. or its affiliates ("Ritz-Carlton"). MAG of Life FZ-LLC uses The Ritz-Carlton marks under a license from Ritz-Carlton, which has not confirmed the accuracy of any of the statements or representations made herein.

MAG OF LIFE All room sizes and floorplan measurements are approximate and may vary per unit. Floorplans and unit features are preliminary and proposed only. Developer reserves the right to modify, revise, change or withdraw any or all of same in its sole and absolute discretion and without prior notice. Depictions of furnishings, finishes, appliances, counters, soffits, floor coverings and other matters of detail, including, without limitation, items of finish and decoration are conceptual only and are not necessarily included in each Unit. Consult your Agreement and the Prospectus for items included with your Unit.



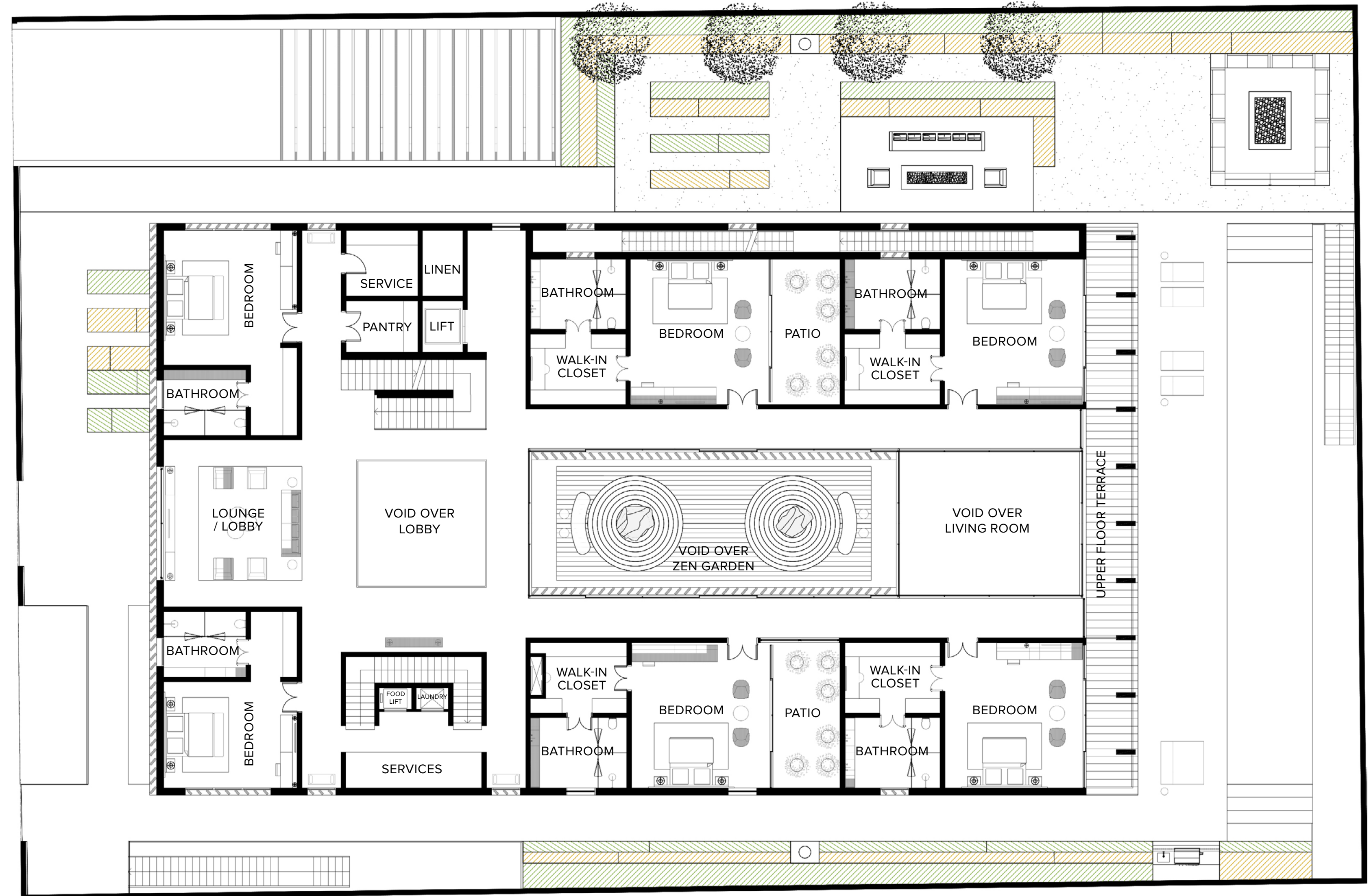
THE RITZ-CARLTON RESIDENCES

DUBAI, CREEKSIDE

EARTH
MANSION

First Floor

INTERIOR	682.76 SQ.M / 7,349.16 SQ.FT
EXTERIOR	51.94 SQ.M / 559.08 SQ.FT
SERVICES	6.12 SQ.M / 65.88 SQ.FT
TOTAL AREA	740.82 SQ.M / 7,974.11 SQ.FT



DIFC Conference Centre
DIFC Gate Village - 11
Street 312, Dubai

theresidencesdubaicreek.com
info@theresidencesdubaicreek.com

The Ritz-Carlton Residences, Dubai, Creekside are not owned, developed or sold by The Ritz-Carlton Hotel Company, L.L.C. or its affiliates ("Ritz-Carlton"). MAG of Life FZ-LLC uses The Ritz-Carlton marks under a license from Ritz-Carlton, which has not confirmed the accuracy of any of the statements or representations made herein.

MAG OF LIFE All room sizes and floorplan measurements are approximate and may vary per unit. Floorplans and unit features are preliminary and proposed only. Developer reserves the right to modify, revise, change or withdraw any or all of same in its sole and absolute discretion and without prior notice. Depictions of furnishings, finishes, appliances, counters, soffits, floor coverings and other matters of detail, including, without limitation, items of finish and decoration are conceptual only and are not necessarily included in each Unit. Consult your Agreement and the Prospectus for items included with your Unit.



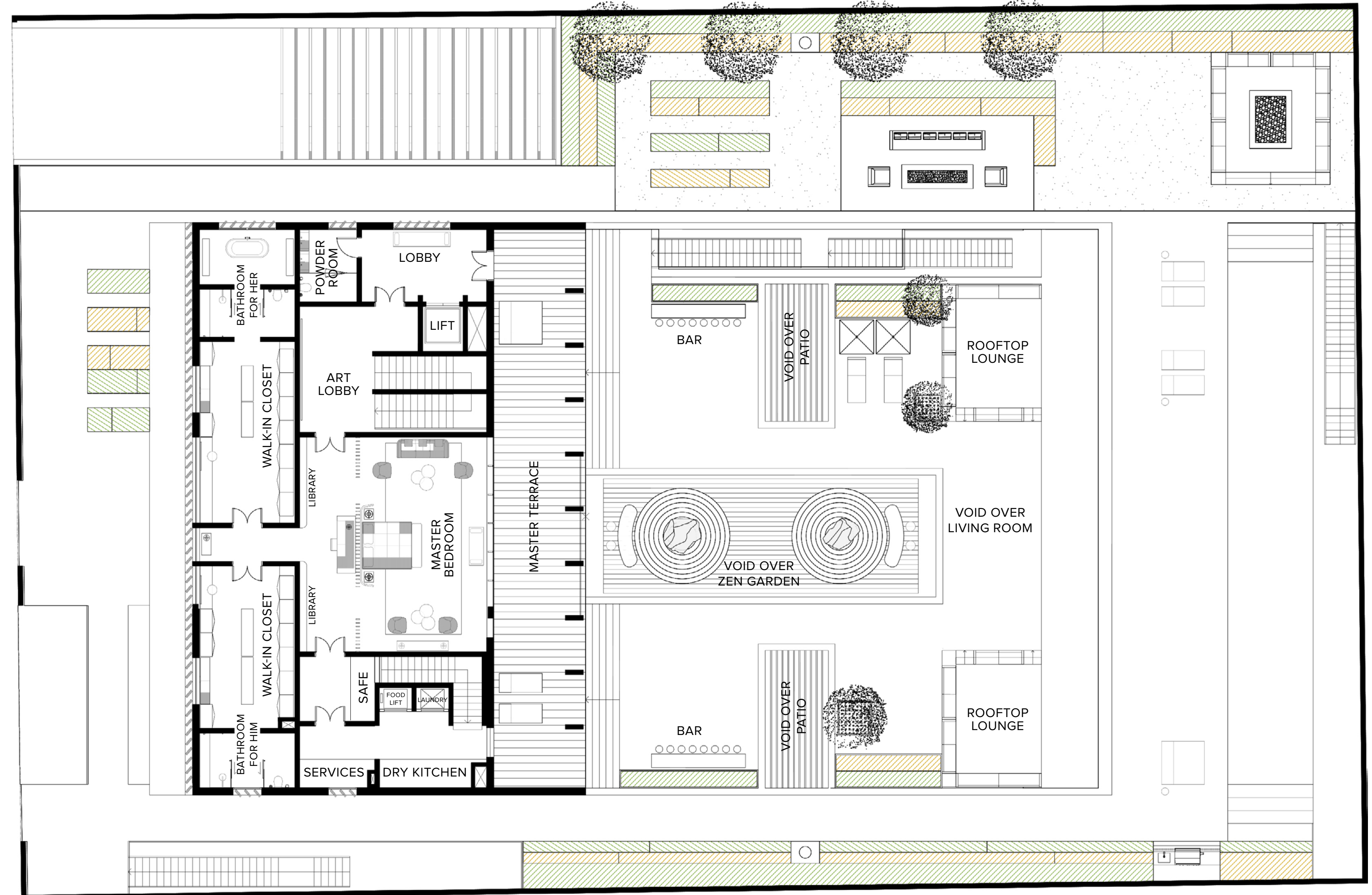
THE RITZ-CARLTON RESIDENCES

DUBAI, CREEKSIDE

EARTH
MANSION

Second Floor

INTERIOR	299.75 SQ.M / 3,226.48 SQ.FT
EXTERIOR	92.42 SQ.M / 994.80 SQ.FT
TOTAL AREA	392.17 SQ.M / 4,221.28 SQ.FT
SKY GARDEN	348.65 SQ.M / 3,752.83 SQ.FT



DIFC Conference Centre
 DIFC Gate Village - 11
 Street 312, Dubai

theresidencesdubaicreek.com
 info@theresidencesdubaicreek.com

The Ritz-Carlton Residences, Dubai, Creekside are not owned, developed or sold by The Ritz-Carlton Hotel Company, L.L.C. or its affiliates ("Ritz-Carlton"). MAG of Life FZ-LLC uses The Ritz-Carlton marks under a license from Ritz-Carlton, which has not confirmed the accuracy of any of the statements or representations made herein.

MAG OF LIFE All room sizes and floorplan measurements are approximate and may vary per unit. Floorplans and unit features are preliminary and proposed only. Developer reserves the right to modify, revise, change or withdraw any or all of same in its sole and absolute discretion and without prior notice. Depictions of furnishings, finishes, appliances, counters, soffits, floor coverings and other matters of detail, including, without limitation, items of finish and decoration are conceptual only and are not necessarily included in each Unit. Consult your Agreement and the Prospectus for items included with your Unit.



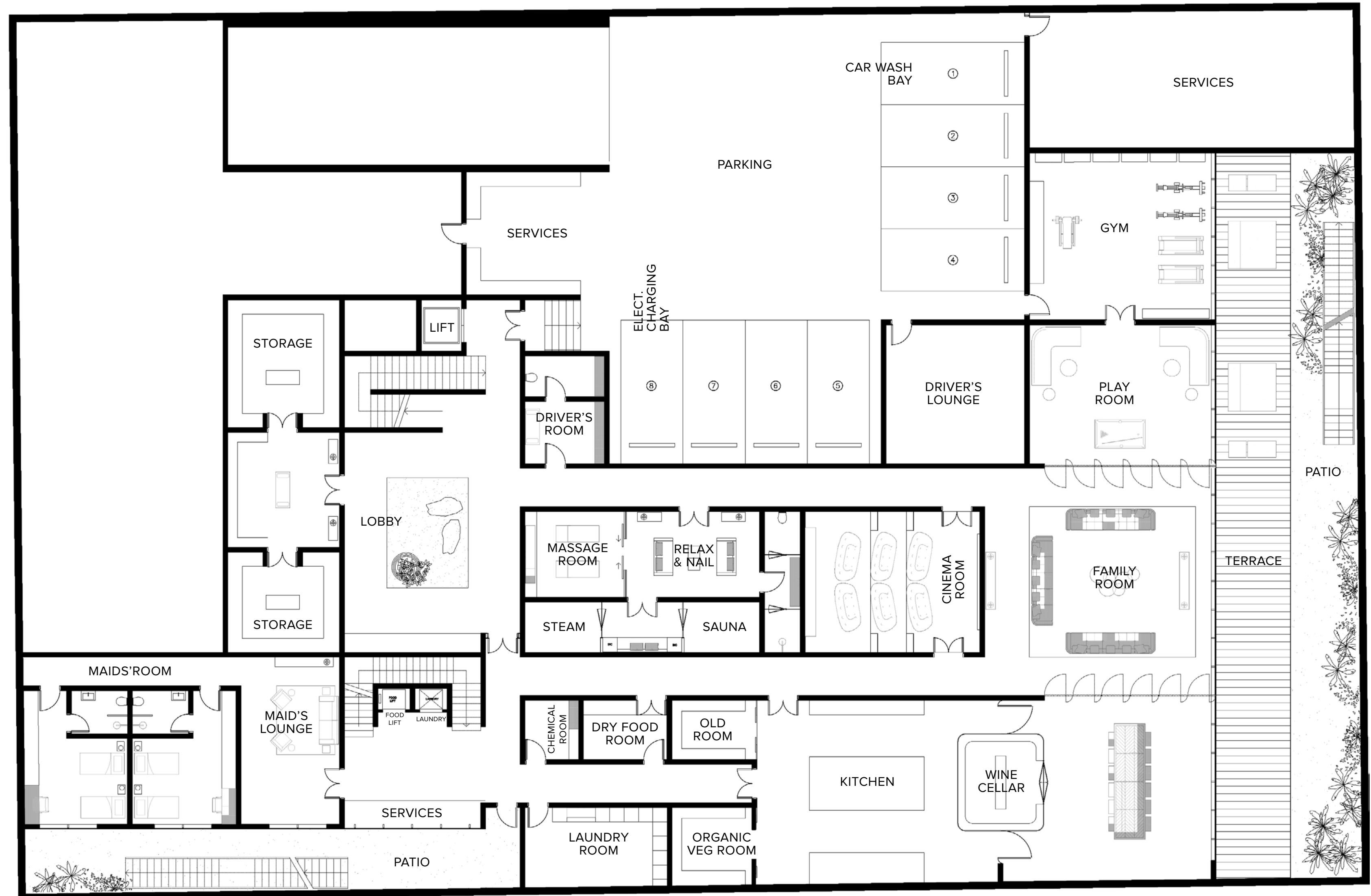
THE RITZ-CARLTON RESIDENCES

DUBAI, CREEKSIDE

EARTH
MANSION

Basement

INTERIOR	1,007.47 SQ.M / 10,844.31 SQ.FT
EXTERIOR	157.77 SQ.M / 1,698.22 SQ.FT
SERVICES	733.53 SQ.M / 7,895.64 SQ.FT
TOTAL AREA	1,898.77 SQ.M / 20,438.17 SQ.FT



DIFC Conference Centre
 DIFC Gate Village - 11
 Street 312, Dubai

theresidencesdubaicreek.com
 info@theresidencesdubaicreek.com

The Ritz-Carlton Residences, Dubai, Creekside are not owned, developed or sold by The Ritz-Carlton Hotel Company, L.L.C. or its affiliates ("Ritz-Carlton"). MAG of Life FZ-LLC uses The Ritz-Carlton marks under a license from Ritz-Carlton, which has not confirmed the accuracy of any of the statements or representations made herein.

MAG OF LIFE All room sizes and floorplan measurements are approximate and may vary per unit. Floorplans and unit features are preliminary and proposed only. Developer reserves the right to modify, revise, change or withdraw any or all of same in its sole and absolute discretion and without prior notice. Depictions of furnishings, finishes, appliances, counters, soffits, floor coverings and other matters of detail, including, without limitation, items of finish and decoration are conceptual only and are not necessarily included in each Unit. Consult your Agreement and the Prospectus for items included with your Unit.



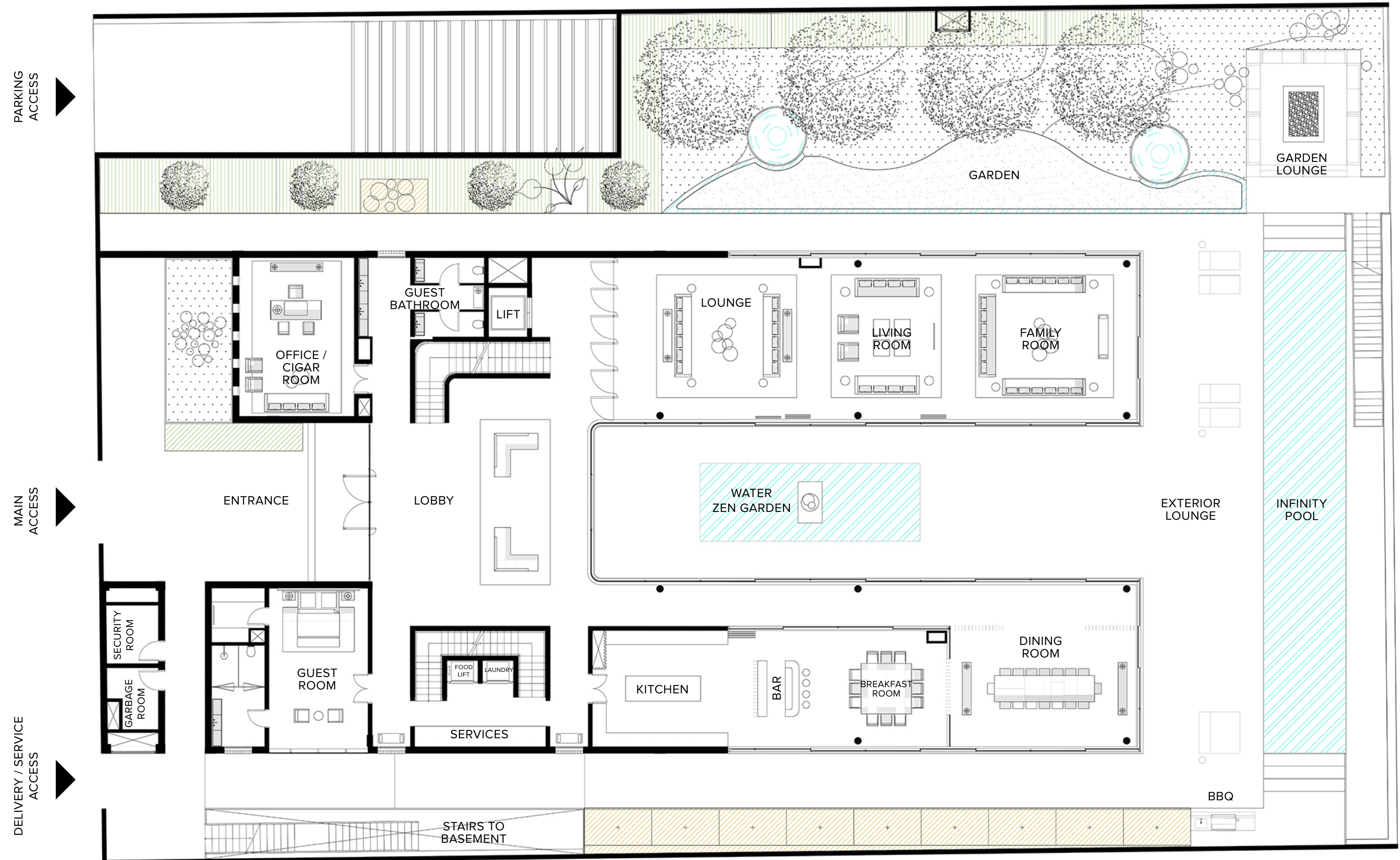
THE RITZ-CARLTON RESIDENCES

DUBAI, CREEKSIDE

WATER MANSION

Ground Floor

INTERIOR	669.03 SQ.M / 7,201.37 SQ.FT
EXTERIOR	241.08 SQ.M / 2,594.96 SQ.FT
SERVICES	21.25 SQ.M / 228.72 SQ.FT
TOTAL AREA	931.36 SQ.M / 10,025.07 SQ.FT



DIFC Conference Centre
DIFC Gate Village - 11
Street 312, Dubai

theresidencesdubaicreek.com
info@theresidencesdubaicreek.com

The Ritz-Carlton Residences, Dubai, Creekside are not owned, developed or sold by The Ritz-Carlton Hotel Company, L.L.C. or its affiliates ("Ritz-Carlton"). MAG of Life FZ-LLC uses The Ritz-Carlton marks under a license from Ritz-Carlton, which has not confirmed the accuracy of any of the statements or representations made herein.

MAG OF LIFE All room sizes and floorplan measurements are approximate and may vary per unit. Floorplans and unit features are preliminary and proposed only. Developer reserves the right to modify, revise, change or withdraw any or all of same in its sole and absolute discretion and without prior notice. Depictions of furnishings, finishes, appliances, counters, soffits, floor coverings and other matters of detail, including, without limitation, items of finish and decoration are conceptual only and are not necessarily included in each Unit. Consult your Agreement and the Prospectus for items included with your Unit.



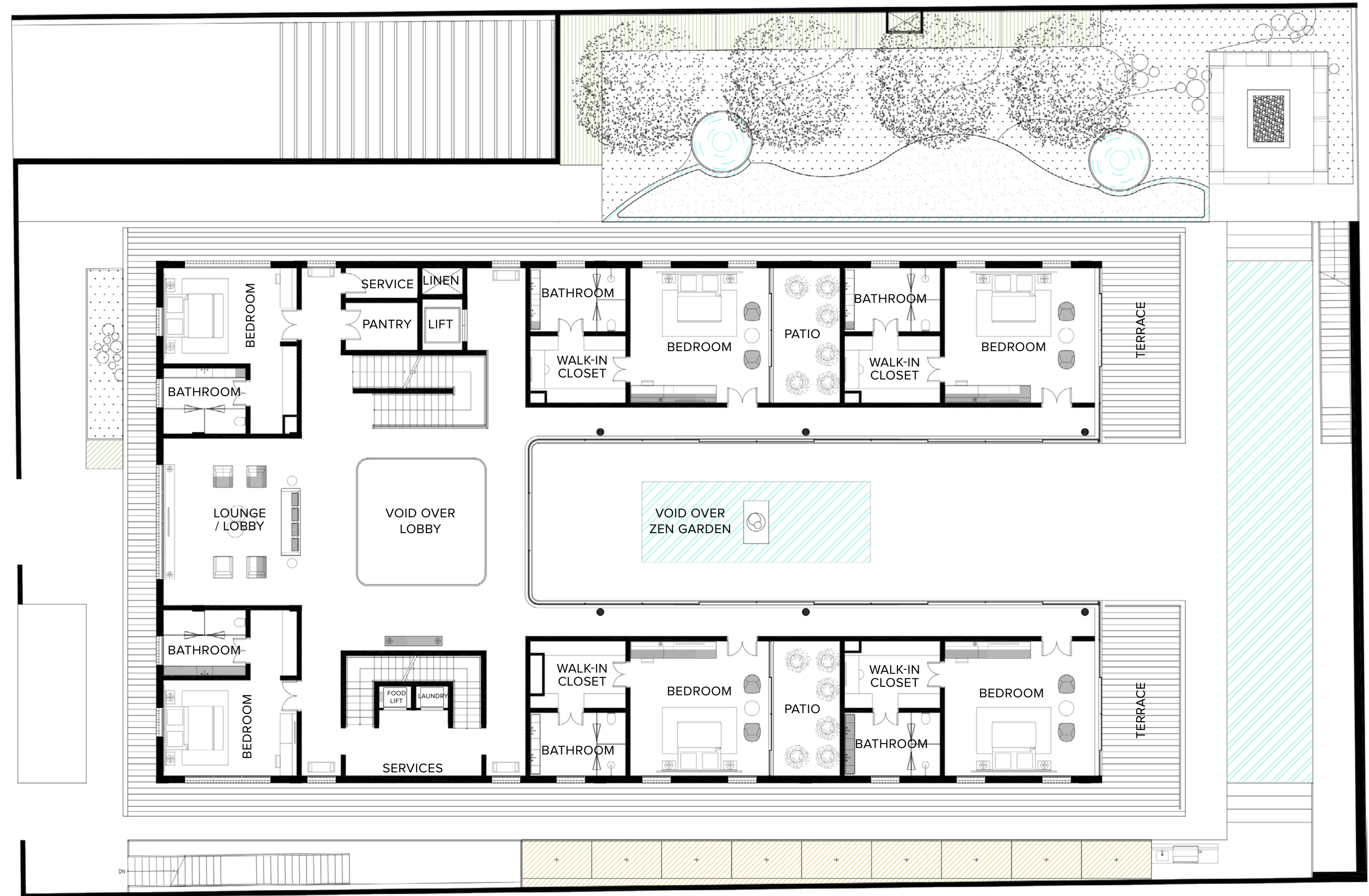
THE RITZ-CARLTON RESIDENCES

DUBAI, CREEKSIDE

WATER
MANSION

First Floor

INTERIOR	636.39 SQ.M / 6,850.04 SQ.FT
EXTERIOR	145.74 SQ.M / 1,568.73 SQ.FT
TOTAL AREA	782.13 SQ.M / 8,418.77 SQ.FT



DIFC Conference Centre
 DIFC Gate Village - 11
 Street 312, Dubai

theresidencesdubaicreek.com
 info@theresidencesdubaicreek.com

The Ritz-Carlton Residences, Dubai, Creekside are not owned, developed or sold by The Ritz-Carlton Hotel Company, L.L.C. or its affiliates ("Ritz-Carlton"). MAG of Life FZ-LLC uses The Ritz-Carlton marks under a license from Ritz-Carlton, which has not confirmed the accuracy of any of the statements or representations made herein.

MAG OF LIFE All room sizes and floorplan measurements are approximate and may vary per unit. Floorplans and unit features are preliminary and proposed only. Developer reserves the right to modify, revise, change or withdraw any or all of same in its sole and absolute discretion and without prior notice. Depictions of furnishings, finishes, appliances, counters, soffits, floor coverings and other matters of detail, including, without limitation, items of finish and decoration are conceptual only and are not necessarily included in each Unit. Consult your Agreement and the Prospectus for items included with your Unit.



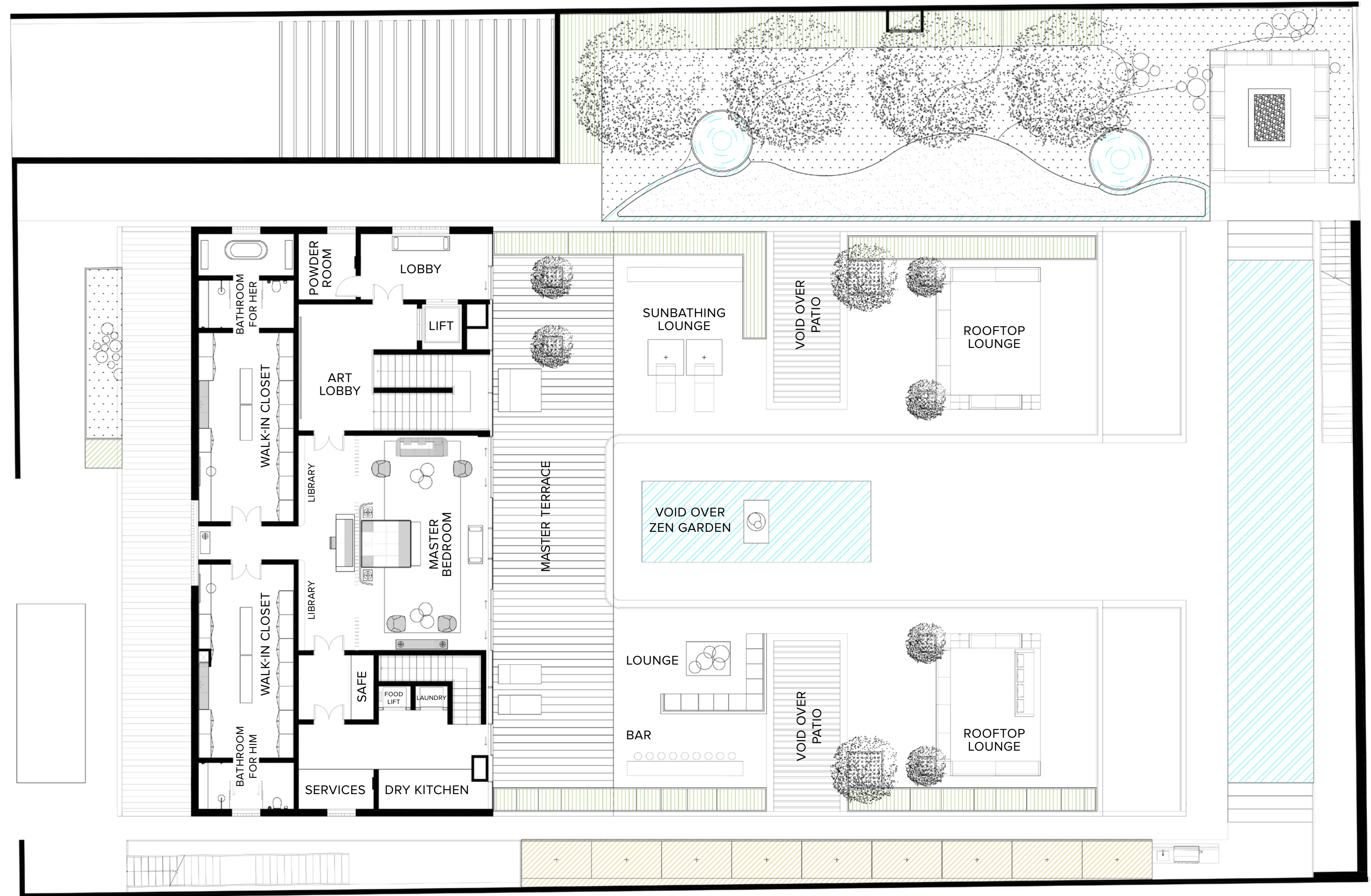
THE RITZ-CARLTON RESIDENCES

DUBAI, CREEKSIDE

WATER
MANSION

Second Floor

INTERIOR	302.33 SQ.M / 3,254.25 SQ.FT
EXTERIOR	164.18 SQ.M / 1,767.22 SQ.FT
TOTAL AREA	466.51 SQ.M / 5,021.47 SQ.FT
SKY GARDEN	315.62 SQ.M / 3,397.30 SQ.FT



DIFC Conference Centre
 DIFC Gate Village - 11
 Street 312, Dubai

theresidencesdubaicreek.com
 info@theresidencesdubaicreek.com

The Ritz-Carlton Residences, Dubai, Creekside are not owned, developed or sold by The Ritz-Carlton Hotel Company, L.L.C. or its affiliates ("Ritz-Carlton"). MAG of Life FZ-LLC uses The Ritz-Carlton marks under a license from Ritz-Carlton, which has not confirmed the accuracy of any of the statements or representations made herein.

MAG OF LIFE All room sizes and floorplan measurements are approximate and may vary per unit. Floorplans and unit features are preliminary and proposed only. Developer reserves the right to modify, revise, change or withdraw any or all of same in its sole and absolute discretion and without prior notice. Depictions of furnishings, finishes, appliances, counters, soffits, floor coverings and other matters of detail, including, without limitation, items of finish and decoration are conceptual only and are not necessarily included in each Unit. Consult your Agreement and the Prospectus for items included with your Unit.



THE RITZ-CARLTON RESIDENCES

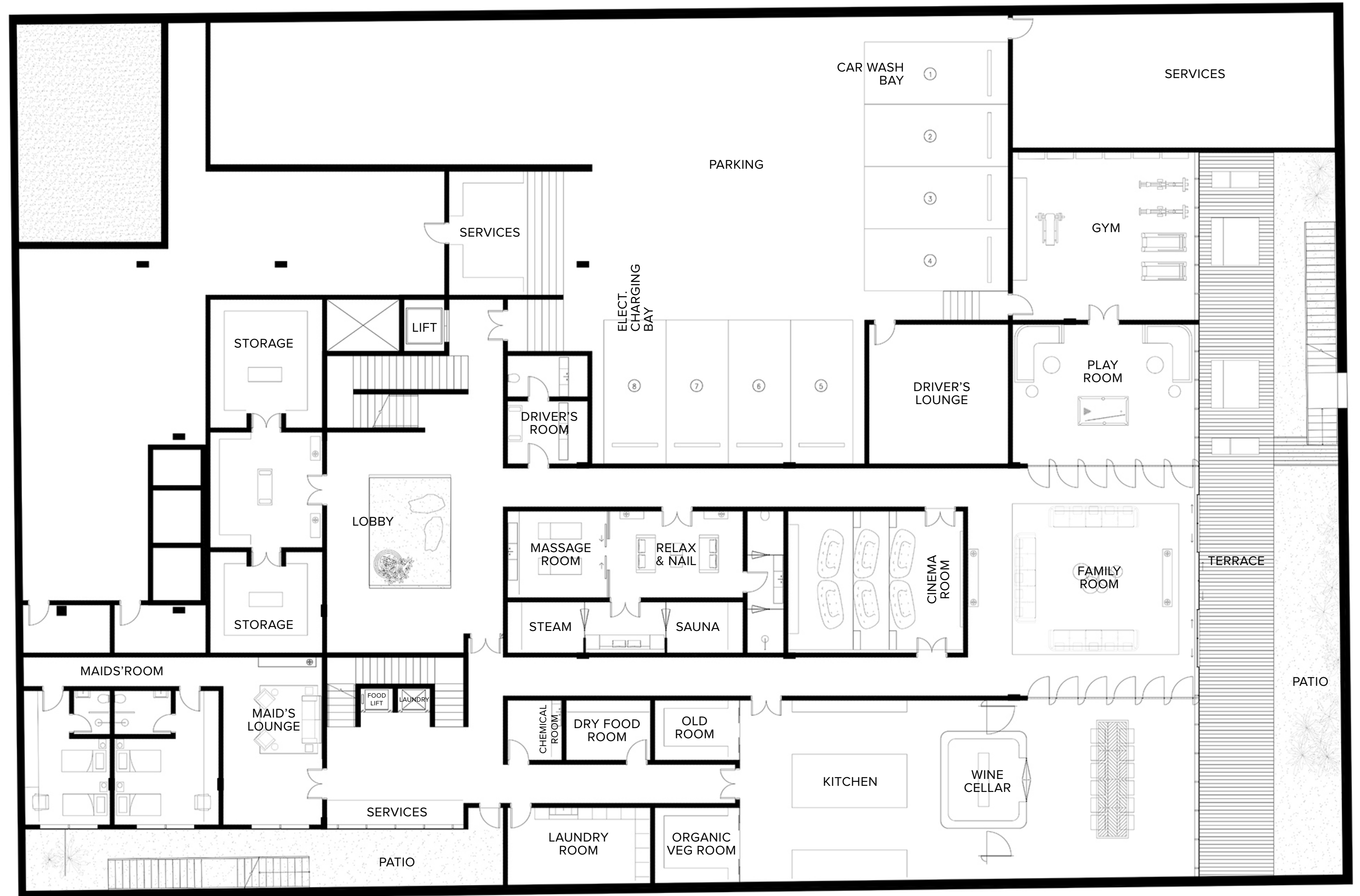
DUBAI, CREEKSIDE

WATER MANSION



Basement

INTERIOR	996.49 SQ.M / 10,726.12 SQ.FT
EXTERIOR	127.61 SQ.M / 1,373.58 SQ.FT
SERVICES	671.02 SQ.M / 7,222.79 SQ.FT
TOTAL AREA	1,795.12 SQ.M / 19,322.49 SQ.FT



DIFC Conference Centre
DIFC Gate Village - 11
Street 312, Dubai

theresidencesdubaicreek.com
info@theresidencesdubaicreek.com

The Ritz-Carlton Residences, Dubai, Creekside are not owned, developed or sold by The Ritz-Carlton Hotel Company, L.L.C. or its affiliates ("Ritz-Carlton"). MAG of Life FZ-LLC uses The Ritz-Carlton marks under a license from Ritz-Carlton, which has not confirmed the accuracy of any of the statements or representations made herein.

MAG OF LIFE All room sizes and floorplan measurements are approximate and may vary per unit. Floorplans and unit features are preliminary and proposed only. Developer reserves the right to modify, revise, change or withdraw any or all of same in its sole and absolute discretion and without prior notice. Depictions of furnishings, finishes, appliances, counters, soffits, floor coverings and other matters of detail, including, without limitation, items of finish and decoration are conceptual only and are not necessarily included in each Unit. Consult your Agreement and the Prospectus for items included with your Unit.

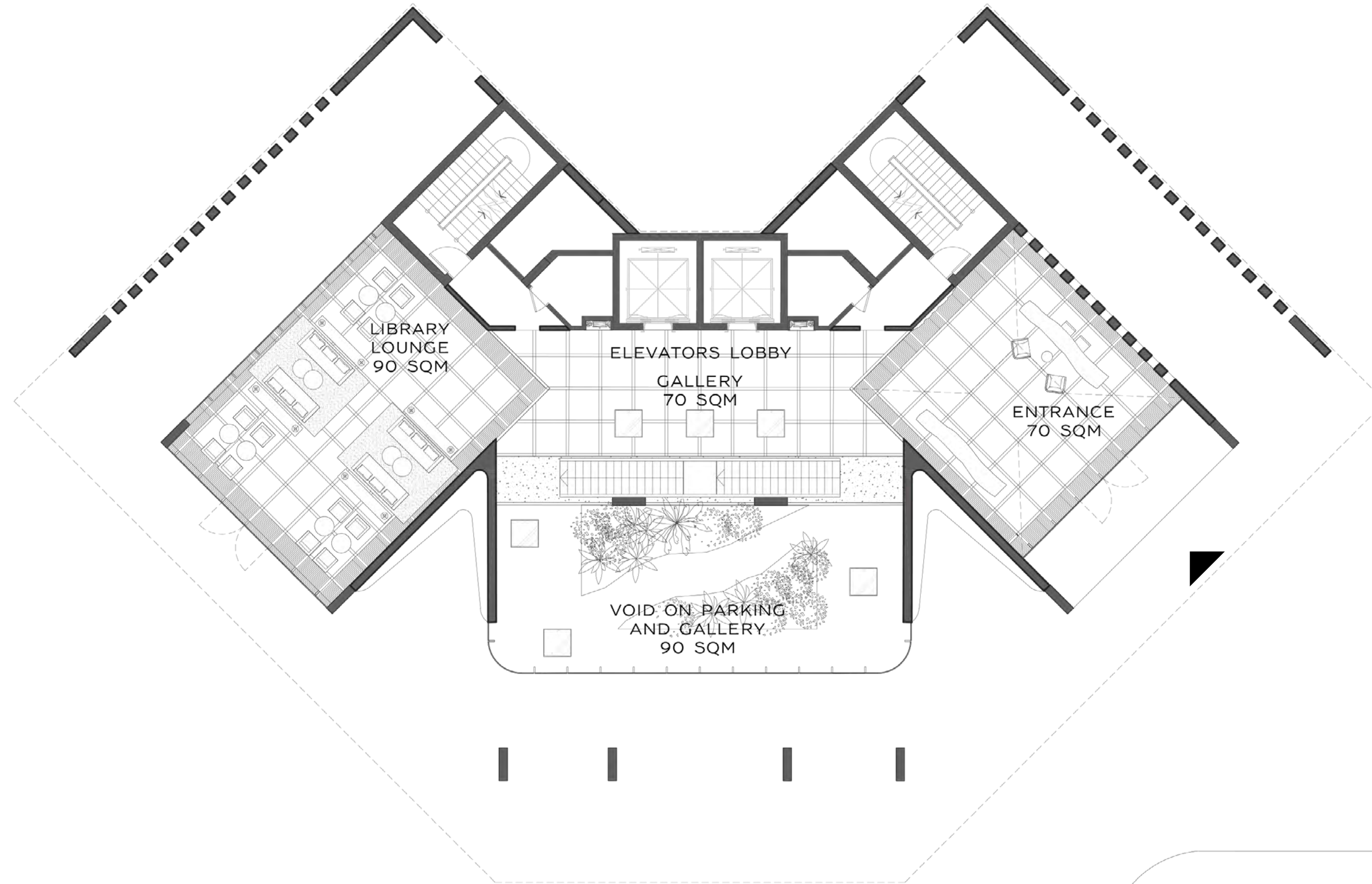


THE RITZ-CARLTON RESIDENCES

DUBAI, CREEKSIDE



Ground Floor BUILDING



Residence Lobby	70 SQ.M
Gallery and Elevator Lobby	70 SQ.M
Library Lounge	90 SQ.M

DIFC Conference Centre
 DIFC Gate Village - 11
 Street 312, Dubai

theresidencesdubaicreek.com
info@theresidencesdubaicreek.com

RESIDENCE
 DROP OFF

The Ritz-Carlton Residences, Dubai, Creekside are not owned, developed or sold by The Ritz-Carlton Hotel Company, L.L.C. or its affiliates ("Ritz-Carlton"). MAG of Life FZ-LLC uses The Ritz-Carlton marks under a license from Ritz-Carlton, which has not confirmed the accuracy of any of the statements or representations made herein.

MAG OF LIFE All room sizes and floorplan measurements are approximate and may vary per unit. Floorplans and unit features are preliminary and proposed only. Developer reserves the right to modify, revise, change or withdraw any or all of same in its sole and absolute discretion and without prior notice. Depictions of furnishings, finishes, appliances, counters, soffits, floor coverings and other matters of detail, including, without limitation, items of finish and decoration are conceptual only and are not necessarily included in each Unit. Consult your Agreement and the Prospectus for items included with your Unit.



THE RITZ-CARLTON RESIDENCES

DUBAI, CREEKSIDE

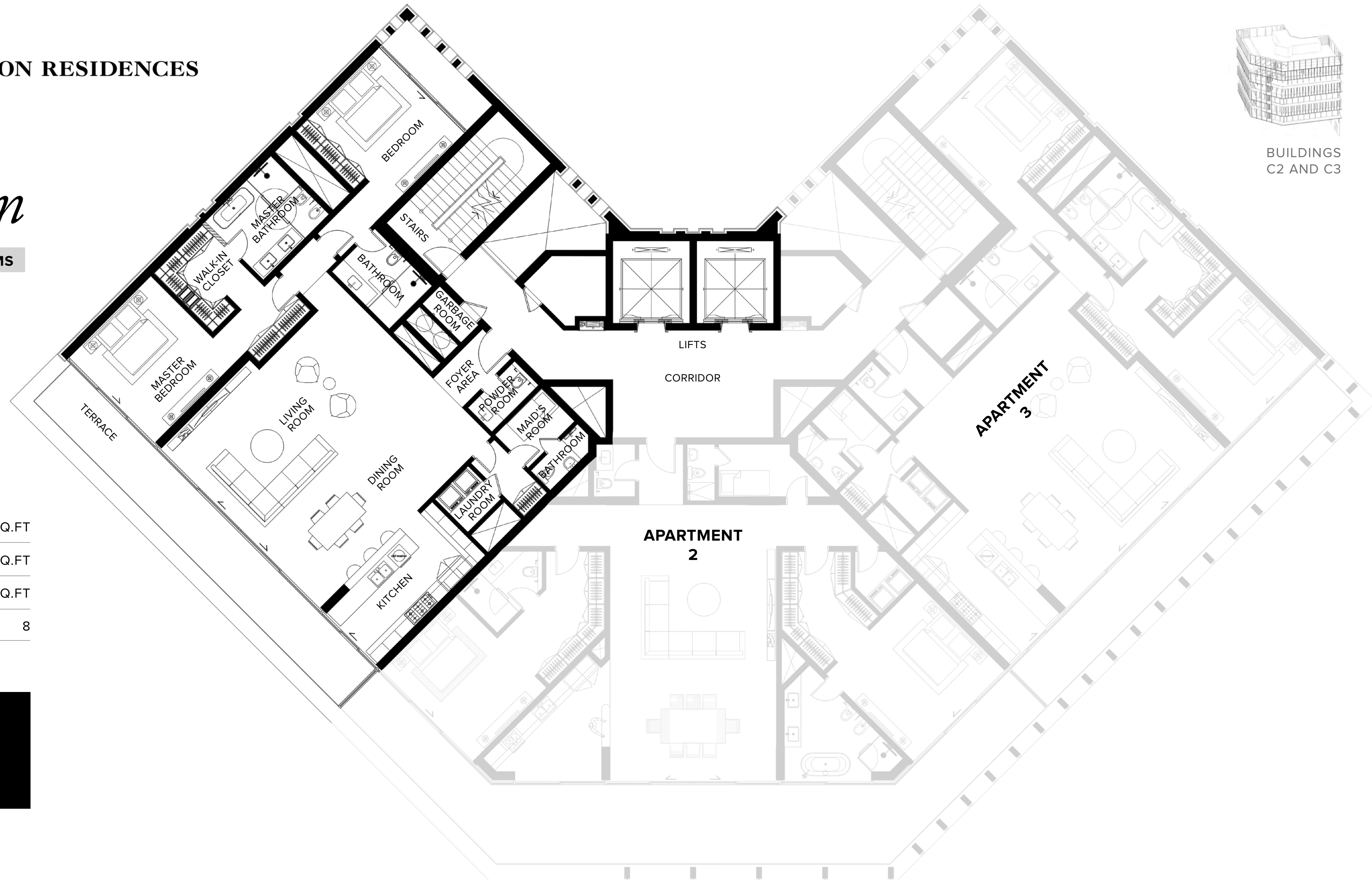


BUILDINGS C2 AND C3

Two Bedroom

2 BEDROOM + MAID + 2.5 BATHROOMS

- BURJ KHALIFA SKYLINE VIEW
- CREEK
- GARDEN RESORT



INTERIOR	200 SQ.M / 2,153 SQ.FT
EXTERIOR	32 SQ.M / 345 SQ.FT
TOTAL AREA	232 SQ.M / 2,498 SQ.FT
NO. OF UNITS	8

DIFC Conference Centre
 DIFC Gate Village - 11
 Street 312, Dubai

theresidencesdubaicreek.com
 info@theresidencesdubaicreek.com

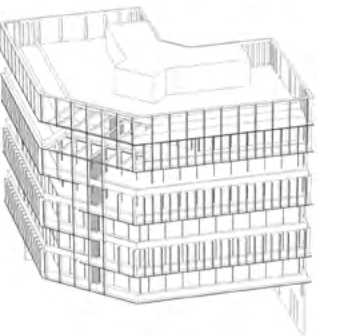
The Ritz-Carlton Residences, Dubai, Creekside are not owned, developed or sold by The Ritz-Carlton Hotel Company, L.L.C. or its affiliates ("Ritz-Carlton"). MAG of Life FZ-LLC uses The Ritz-Carlton marks under a license from Ritz-Carlton, which has not confirmed the accuracy of any of the statements or representations made herein.

MAG OF LIFE All room sizes and floorplan measurements are approximate and may vary per unit. Floorplans and unit features are preliminary and proposed only. Developer reserves the right to modify, revise, change or withdraw any or all of same in its sole and absolute discretion and without prior notice. Depictions of furnishings, finishes, appliances, counters, soffits, floor coverings and other matters of detail, including, without limitation, items of finish and decoration are conceptual only and are not necessarily included in each Unit. Consult your Agreement and the Prospectus for items included with your Unit.



THE RITZ-CARLTON RESIDENCES

DUBAI, CREEKSIDE



BUILDINGS
C2 AND C3

Two Bedroom

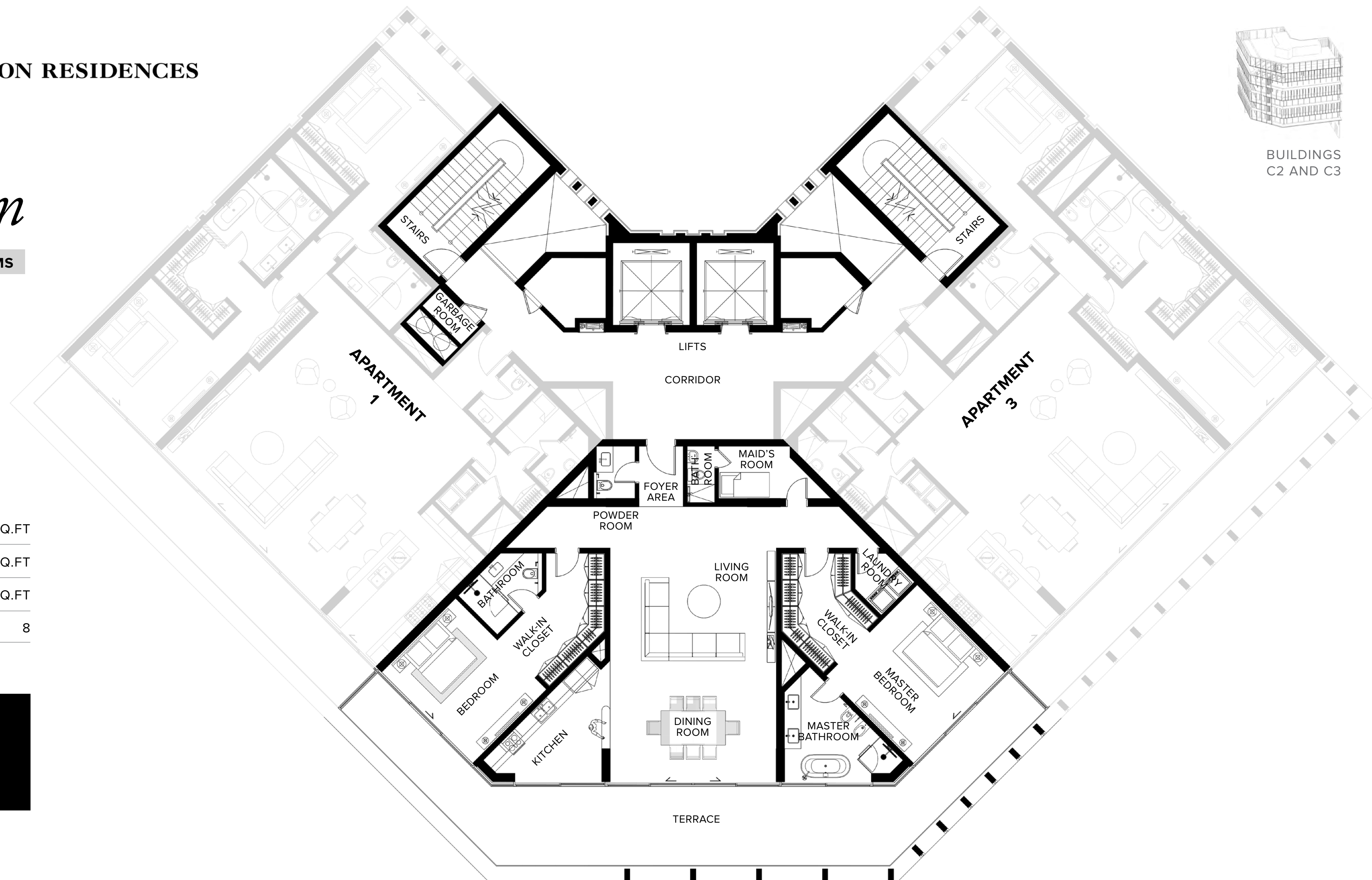
2 BEDROOM + MAID + 2.5 BATHROOMS

- PANORAMIC CREEK VIEW
- BURJ KHALIFA
- GARDEN RESORT

INTERIOR	200 SQ.M / 2,153 SQ.FT
EXTERIOR	68 SQ.M / 732 SQ.FT
TOTAL AREA	268 SQ.M / 2,885 SQ.FT
NO. OF UNITS	8

DIFC Conference Centre
DIFC Gate Village - 11
Street 312, Dubai

theresidencesdubaicreek.com
info@theresidencesdubaicreek.com



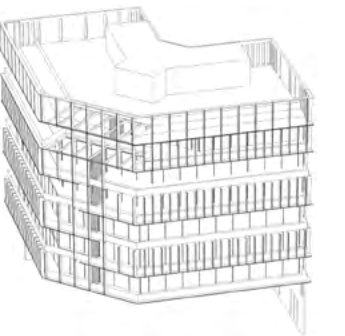
The Ritz-Carlton Residences, Dubai, Creekside are not owned, developed or sold by The Ritz-Carlton Hotel Company, L.L.C. or its affiliates ("Ritz-Carlton"). MAG of Life FZ-LLC uses The Ritz-Carlton marks under a license from Ritz-Carlton, which has not confirmed the accuracy of any of the statements or representations made herein.

MAG OF LIFE All room sizes and floorplan measurements are approximate and may vary per unit. Floorplans and unit features are preliminary and proposed only. Developer reserves the right to modify, revise, change or withdraw any or all of same in its sole and absolute discretion and without prior notice. Depictions of furnishings, finishes, appliances, counters, soffits, floor coverings and other matters of detail, including, without limitation, items of finish and decoration are conceptual only and are not necessarily included in each Unit. Consult your Agreement and the Prospectus for items included with your Unit.



THE RITZ-CARLTON RESIDENCES

DUBAI, CREEKSIDE

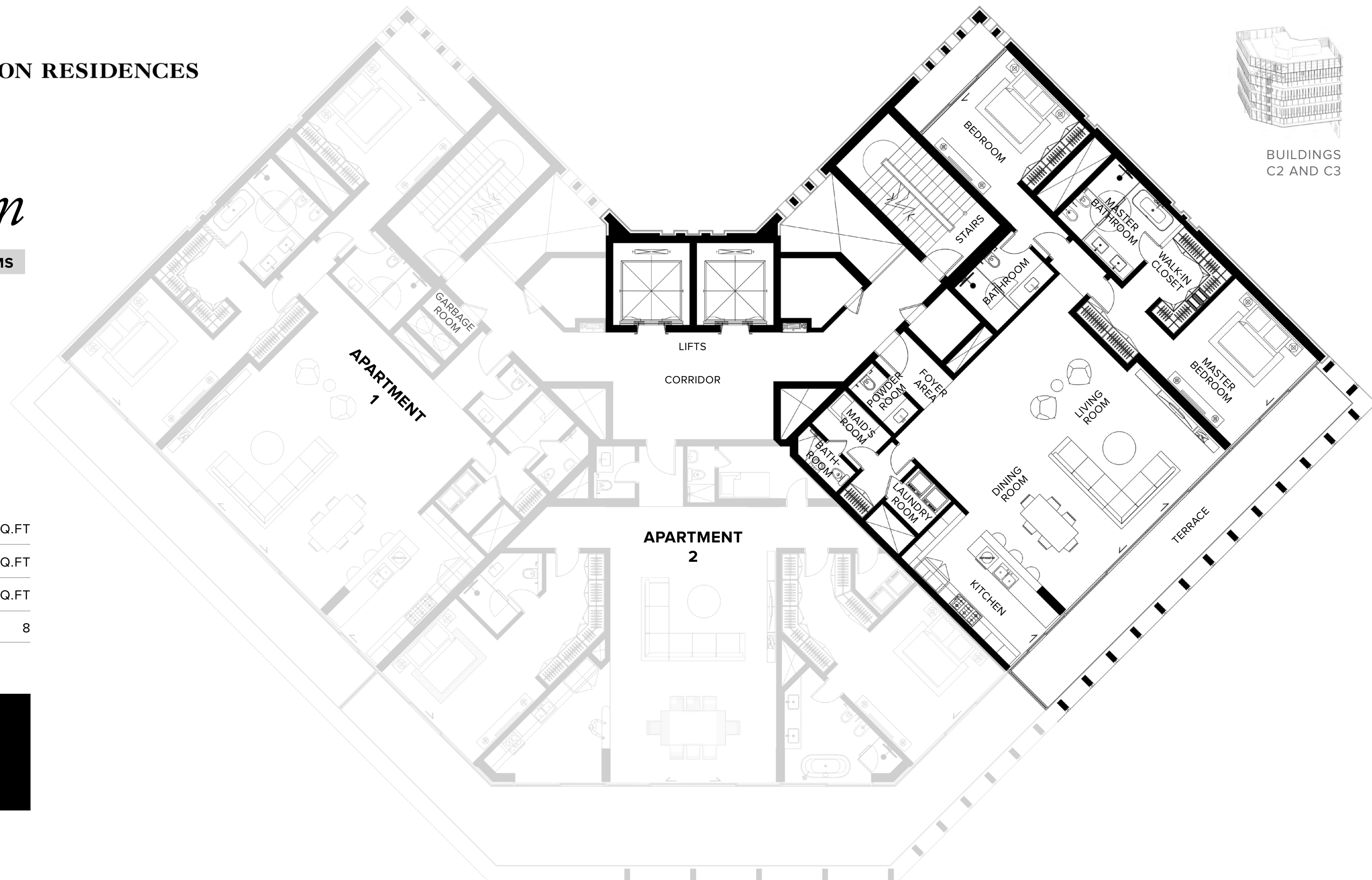


BUILDINGS
C2 AND C3

Two Bedroom

2 BEDROOM + MAID + 2.5 BATHROOMS

- CREEK HARBOUR VIEW
- CREEK SANCTUARY
- POOL & GARDEN



INTERIOR	200 SQ.M / 2,153 SQ.FT
EXTERIOR	32 SQ.M / 345 SQ.FT
TOTAL AREA	232 SQ.M / 2,498 SQ.FT
NO. OF UNITS	8

DIFC Conference Centre
DIFC Gate Village - 11
Street 312, Dubai

theresidencesdubaicreek.com
info@theresidencesdubaicreek.com

The Ritz-Carlton Residences, Dubai, Creekside are not owned, developed or sold by The Ritz-Carlton Hotel Company, L.L.C. or its affiliates ("Ritz-Carlton"). MAG of Life FZ-LLC uses The Ritz-Carlton marks under a license from Ritz-Carlton, which has not confirmed the accuracy of any of the statements or representations made herein.

MAG OF LIFE All room sizes and floorplan measurements are approximate and may vary per unit. Floorplans and unit features are preliminary and proposed only. Developer reserves the right to modify, revise, change or withdraw any or all of same in its sole and absolute discretion and without prior notice. Depictions of furnishings, finishes, appliances, counters, soffits, floor coverings and other matters of detail, including, without limitation, items of finish and decoration are conceptual only and are not necessarily included in each Unit. Consult your Agreement and the Prospectus for items included with your Unit.



THE RITZ-CARLTON RESIDENCES

DUBAI, CREEKSIDE

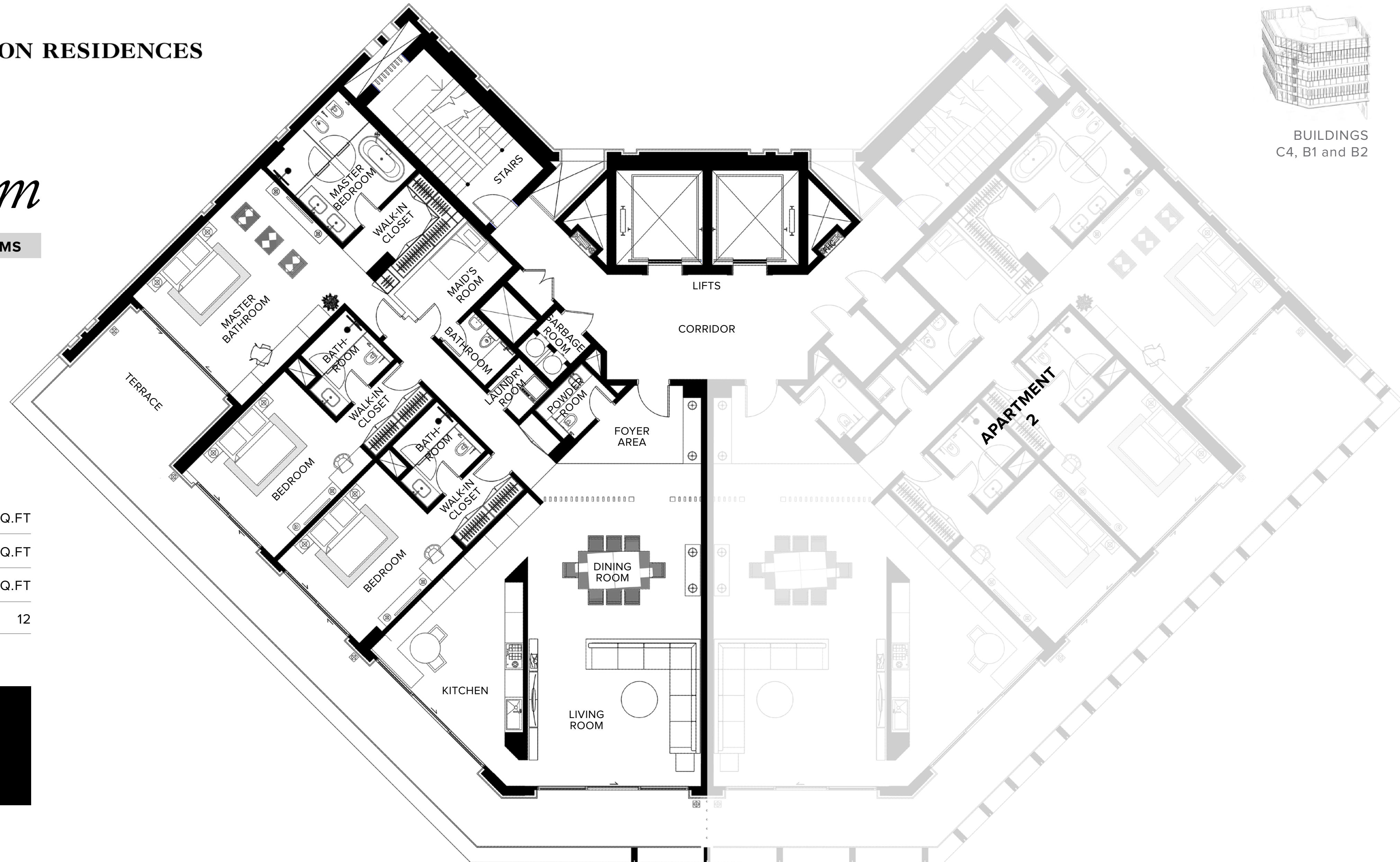


BUILDINGS
C4, B1 and B2

Three Bedroom

3 BEDROOM + MAID + 3.5 BATHROOMS

- BURJ KHALIFA SKYLINE VIEW
- CREEK
- GARDEN RESORT



INTERIOR	261 SQ.M / 2,810 SQ.FT
EXTERIOR	72 SQ.M / 775 SQ.FT
TOTAL AREA	333 SQ.M / 3,585 SQ.FT
NO. OF UNITS	12

DIFC Conference Centre
 DIFC Gate Village - 11
 Street 312, Dubai

theresidencesdubaicreek.com
info@theresidencesdubaicreek.com

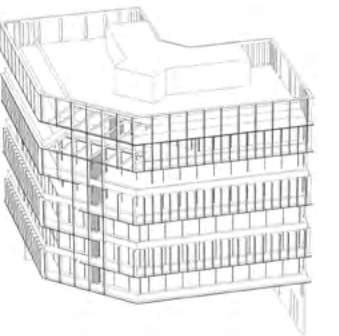
The Ritz-Carlton Residences, Dubai, Creekside are not owned, developed or sold by The Ritz-Carlton Hotel Company, L.L.C. or its affiliates ("Ritz-Carlton"). MAG of Life FZ-LLC uses The Ritz-Carlton marks under a license from Ritz-Carlton, which has not confirmed the accuracy of any of the statements or representations made herein.

MAG OF LIFE All room sizes and floorplan measurements are approximate and may vary per unit. Floorplans and unit features are preliminary and proposed only. Developer reserves the right to modify, revise, change or withdraw any or all of same in its sole and absolute discretion and without prior notice. Depictions of furnishings, finishes, appliances, counters, soffits, floor coverings and other matters of detail, including, without limitation, items of finish and decoration are conceptual only and are not necessarily included in each Unit. Consult your Agreement and the Prospectus for items included with your Unit.



THE RITZ-CARLTON RESIDENCES

DUBAI, CREEKSIDE



BUILDINGS
C4, B1 and B2

Three Bedroom

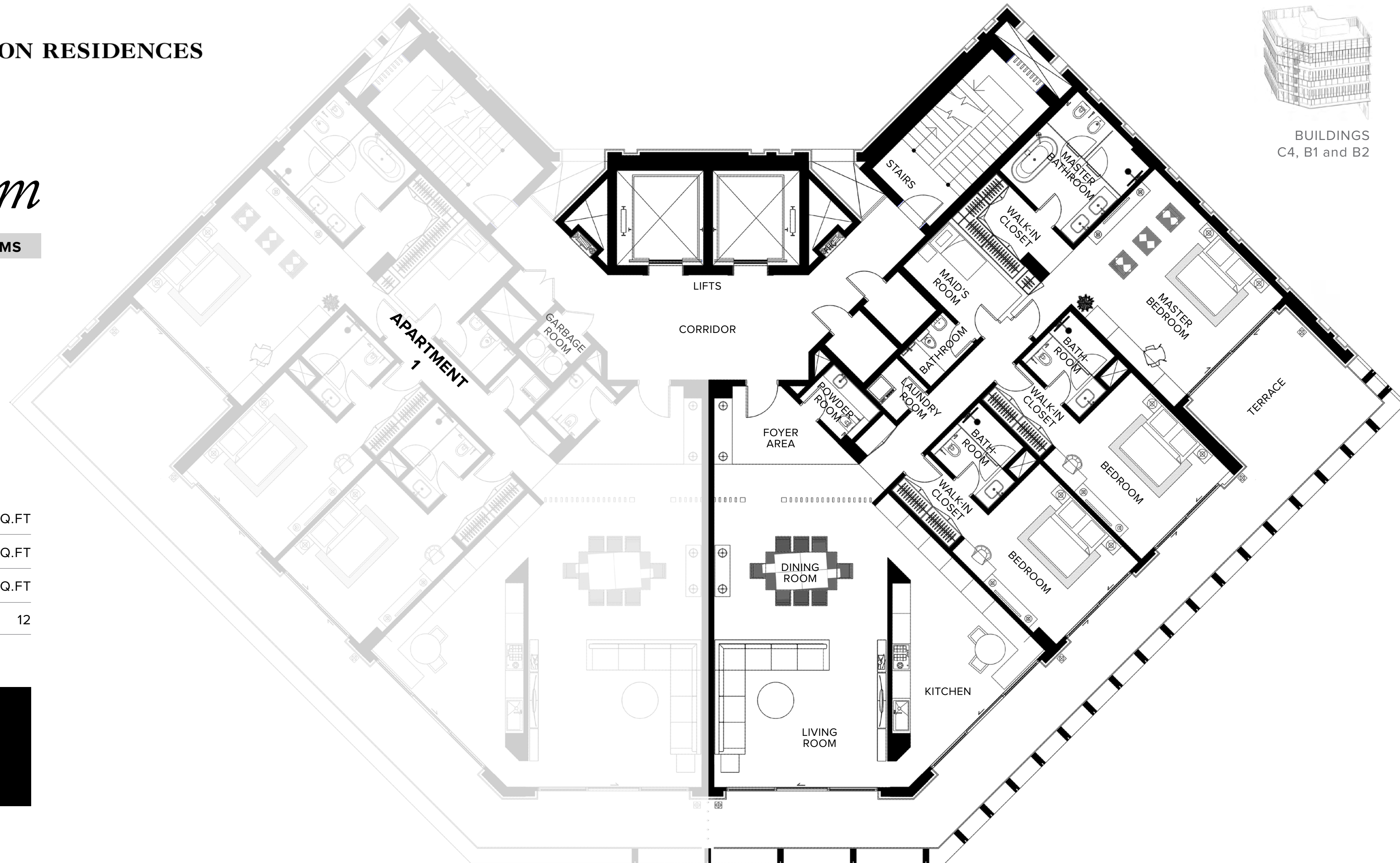
3 BEDROOM + MAID + 3.5 BATHROOMS

- PANORAMIC CREEK VIEW
- BURJ KHALIFA
- GARDEN RESORT

INTERIOR	261 SQ.M / 2,810 SQ.FT
EXTERIOR	72 SQ.M / 775 SQ.FT
TOTAL AREA	333 SQ.M / 3,585 SQ.FT
NO. OF UNITS	12

DIFC Conference Centre
DIFC Gate Village - 11
Street 312, Dubai

theresidencesdubaicreek.com
info@theresidencesdubaicreek.com



The Ritz-Carlton Residences, Dubai, Creekside are not owned, developed or sold by The Ritz-Carlton Hotel Company, L.L.C. or its affiliates ("Ritz-Carlton"). MAG of Life FZ-LLC uses The Ritz-Carlton marks under a license from Ritz-Carlton, which has not confirmed the accuracy of any of the statements or representations made herein.

MAG OF LIFE All room sizes and floorplan measurements are approximate and may vary per unit. Floorplans and unit features are preliminary and proposed only. Developer reserves the right to modify, revise, change or withdraw any or all of same in its sole and absolute discretion and without prior notice. Depictions of furnishings, finishes, appliances, counters, soffits, floor coverings and other matters of detail, including, without limitation, items of finish and decoration are conceptual only and are not necessarily included in each Unit. Consult your Agreement and the Prospectus for items included with your Unit.