



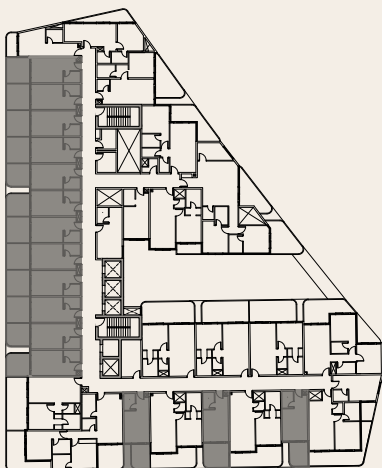
The pinnacle of  
*planning.*

## STUDIO

### Type 01

---

Suite Area	: 247.46	sqft
Balcony Area	: 119.48	sqft
Total Area	: 367	sqft
Total Units	: 157	



KEY PLAN



\*\*The unit layout shown above is a typical layout where there can be minor changes in room dimensions, total area and balcony sizes in the actual units.

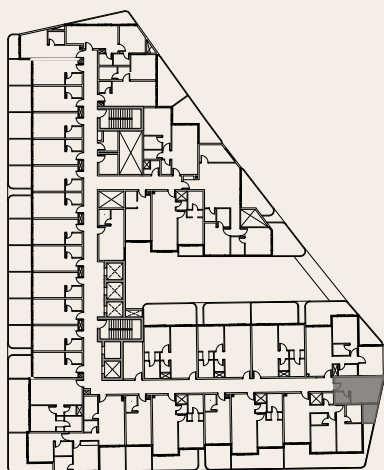


# STUDIO

## Type 02

---

Suite Area	: 240.25	sqft
Balcony Area	: 51.34	sqft
Total Area	: 292.00	sqft
Total Units	: 11	



KEY PLAN



\*\*The unit layout shown above is a typical layout where there can be minor changes in room dimensions, total area and balcony sizes in the actual units.

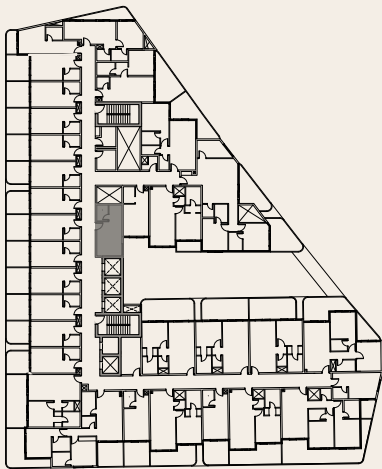


# STUDIO

## Type 03

---

Suite Area	: 262.00	sqft
Balcony Area	: 00.00	sqft
Total Area	: 262.00	sqft
Total Units	: 11	



KEY PLAN



\*\*The unit layout shown above is a typical layout where there can be minor changes in room dimensions, total area and balcony sizes in the actual units.

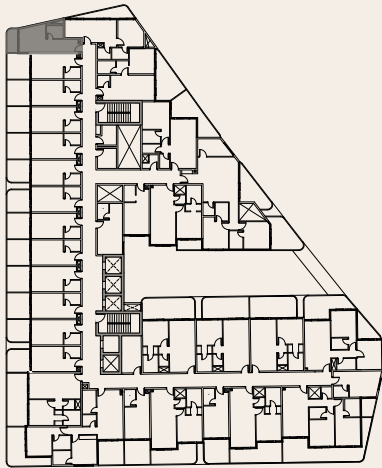


# STUDIO

## Type 04

---

Suite Area	: 279.11	sqft
Balcony Area	: 52.85	sqft
Total Area	: 332.00	sqft
Total Units	: 11	



KEY PLAN



\*\*The unit layout shown above is a typical layout where there can be minor changes in room dimensions, total area and balcony sizes in the actual units.



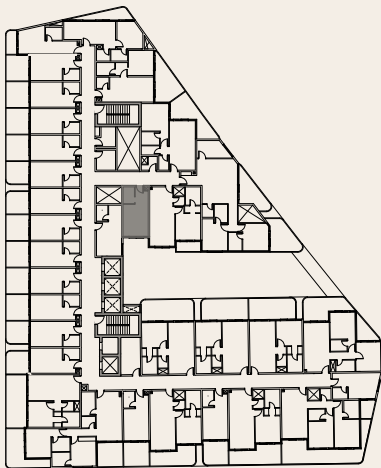


# STUDIO

Type 05

---

Suite Area	: 249.94	sqft
Balcony Area	: 0.00	sqft
Total Area	: 250.00	sqft
Total Units	: 11	



KEY PLAN



\*\*The unit layout shown above is a typical layout where there can be minor changes in room dimensions, total area and balcony sizes in the actual units.

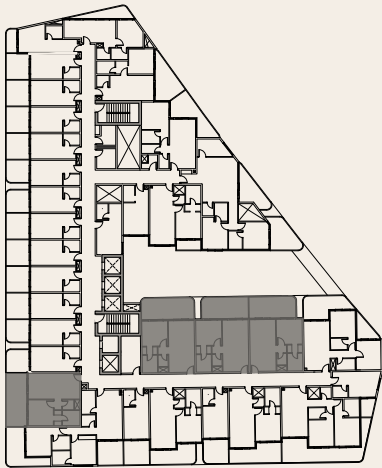


# ONE BHK

Type 01

---

Suite Area	: 522.16	sqft
Balcony Area	: 197.50	sqft
Total Area	: 720.00	sqft
Total Units	: 44	



KEY PLAN



\*\*The unit layout shown above is a typical layout where there can be minor changes in room dimensions, total area and balcony sizes in the actual units.



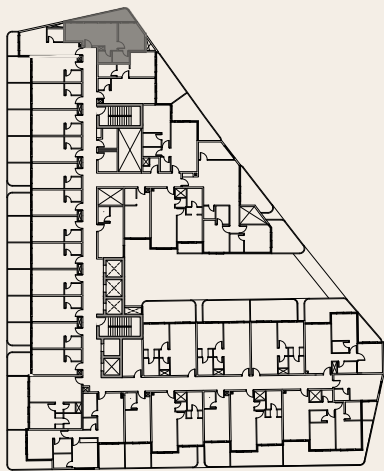


# ONE BHK

## Type 02

---

Suite Area	: 447.13	sqft
Balcony Area	: 101.50	sqft
Total Area	: 549.00	sqft
Total Units	: 11	



KEY PLAN



\*\*The unit layout shown above is a typical layout where there can be minor changes in room dimensions, total area and balcony sizes in the actual units.

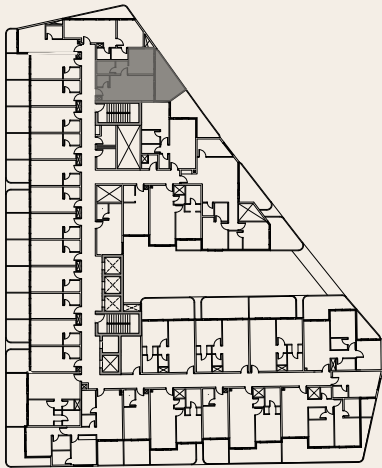


# ONE BHK

## Type 03

---

Suite Area	: 505.80	sqft
Balcony Area	: 177.70	sqft
Total Area	: 684.00	sqft
Total Units	: 11	



KEY PLAN



\*\*The unit layout shown above is a typical layout where there can be minor changes in room dimensions, total area and balcony sizes in the actual units.





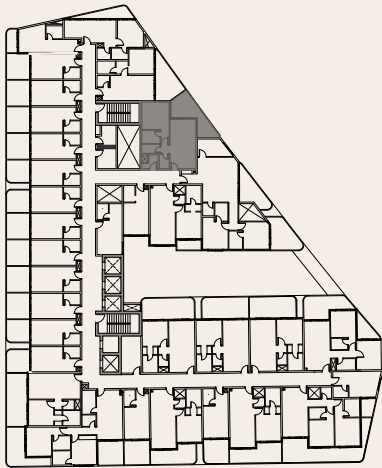


# ONE BHK

## Type 04

---

Suite Area	: 571.67	sqft
Balcony Area	: 191.17	sqft
Total Area	: 763.00	sqft
Total Units	: 11	



KEY PLAN



\*\*The unit layout shown above is a typical layout where there can be minor changes in room dimensions, total area and balcony sizes in the actual units.





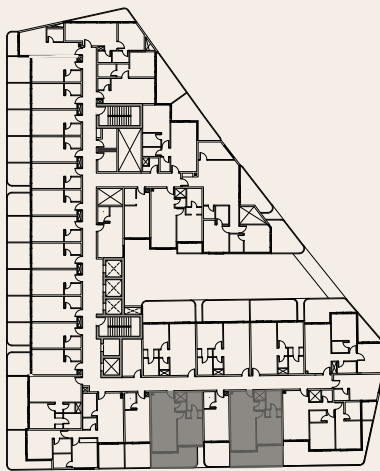


# ONE BHK

Type 05

---

Suite Area	: 540.13	sqft
Balcony Area	: 181.05	sqft
Total Area	: 721.00	sqft
Total Units	: 22	



KEY PLAN



\*\*The unit layout shown above is a typical layout where there can be minor changes in room dimensions, total area and balcony sizes in the actual units.

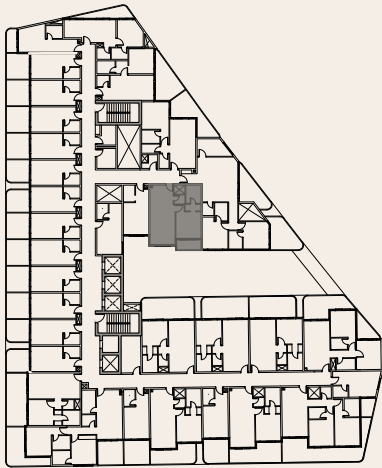


# ONE BHK

Type 06

---

Suite Area	: 542.60	sqft
Balcony Area	: 52.74	sqft
Total Area	: 595.00	sqft
Total Units	: 11	



KEY PLAN



\*\*The unit layout shown above is a typical layout where there can be minor changes in room dimensions, total area and balcony sizes in the actual units.

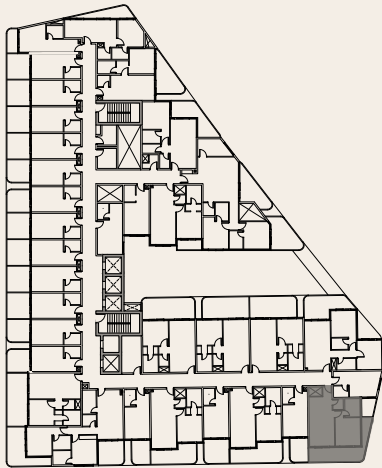


# ONE BHK

Type 07

---

Suite Area	: 503.64	sqft
Balcony Area	: 206.24	sqft
Total Area	: 710.00	sqft
Total Units	: 3	



KEY PLAN



\*\*The unit layout shown above is a typical layout where there can be minor changes in room dimensions, total area and balcony sizes in the actual units.



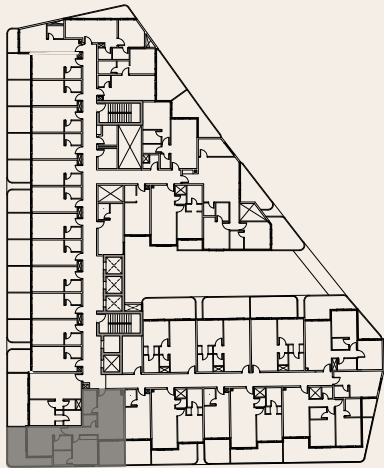


# TWO BHK

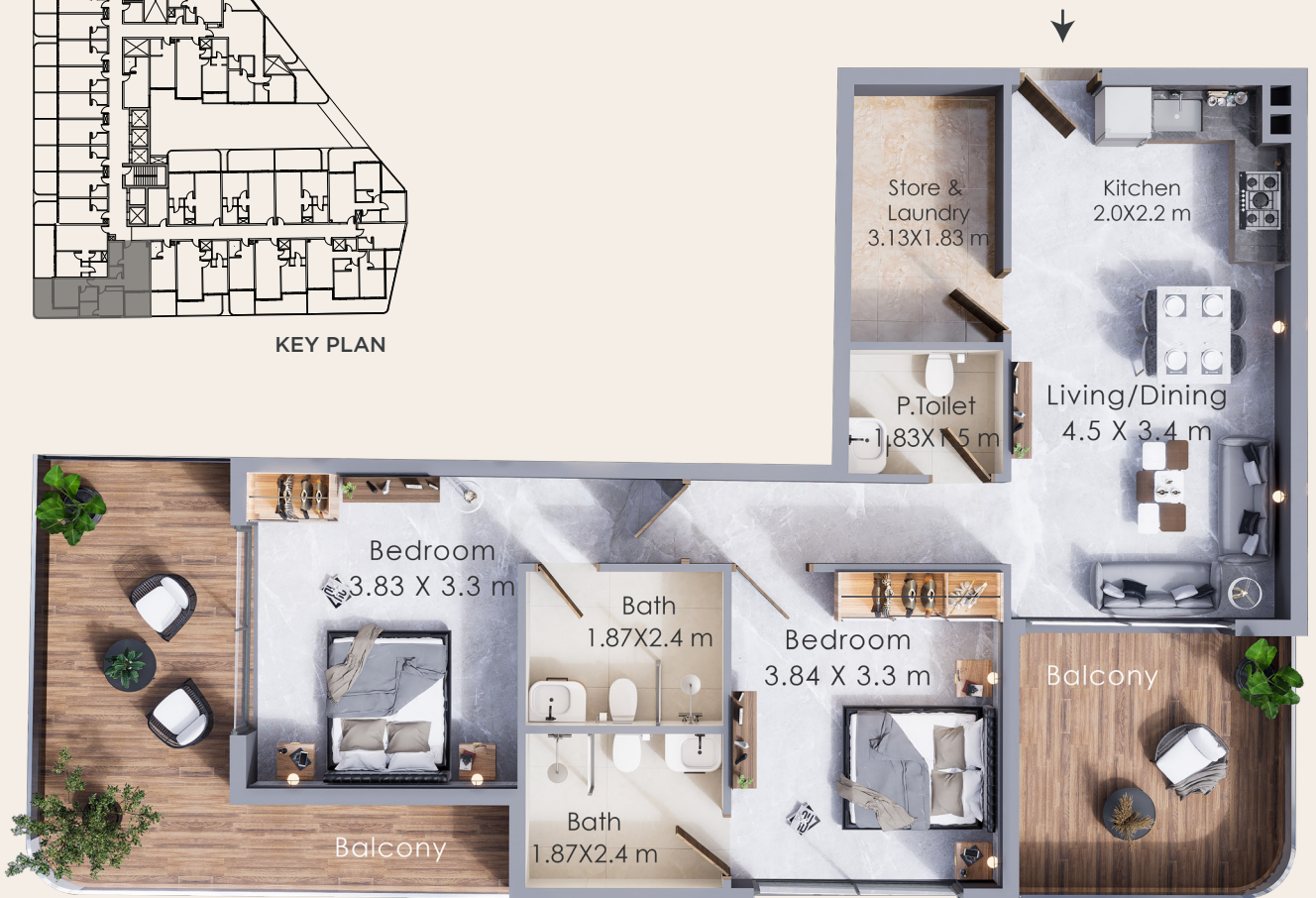
Type 01

---

Suite Area	: 838.19	sqft
Balcony Area	: 315.17	sqft
Total Area	: 1153.00	sqft
Total Units	: 11	



KEY PLAN



\*\*The unit layout shown above is a typical layout where there can be minor changes in room dimensions, total area and balcony sizes in the actual units.



# TWO BHK

Type 02

---

Suite Area	: 752.40	sqft
Balcony Area	: 330.24	sqft
Total Area	: 1083.00	sqft
Total Units	: 8	



\*\*The unit layout shown above is a typical layout where there can be minor changes in room dimensions, total area and balcony sizes in the actual units.





# TWO BHK

## Type 03

---

Suite Area	: 683.40	sqft
Balcony Area	: 253.27	sqft
Total Area	: 937.00	sqft
Total Units	: 11	



\*\*The unit layout shown above is a typical layout where there can be minor changes in room dimensions, total area and balcony sizes in the actual units.



# TWO BHK

## Type 04

Suite Area : 979.84 sqft  
Balcony Area : 309.89 sqft  
Total Area : 1290.00 sqft  
Total Units : 11



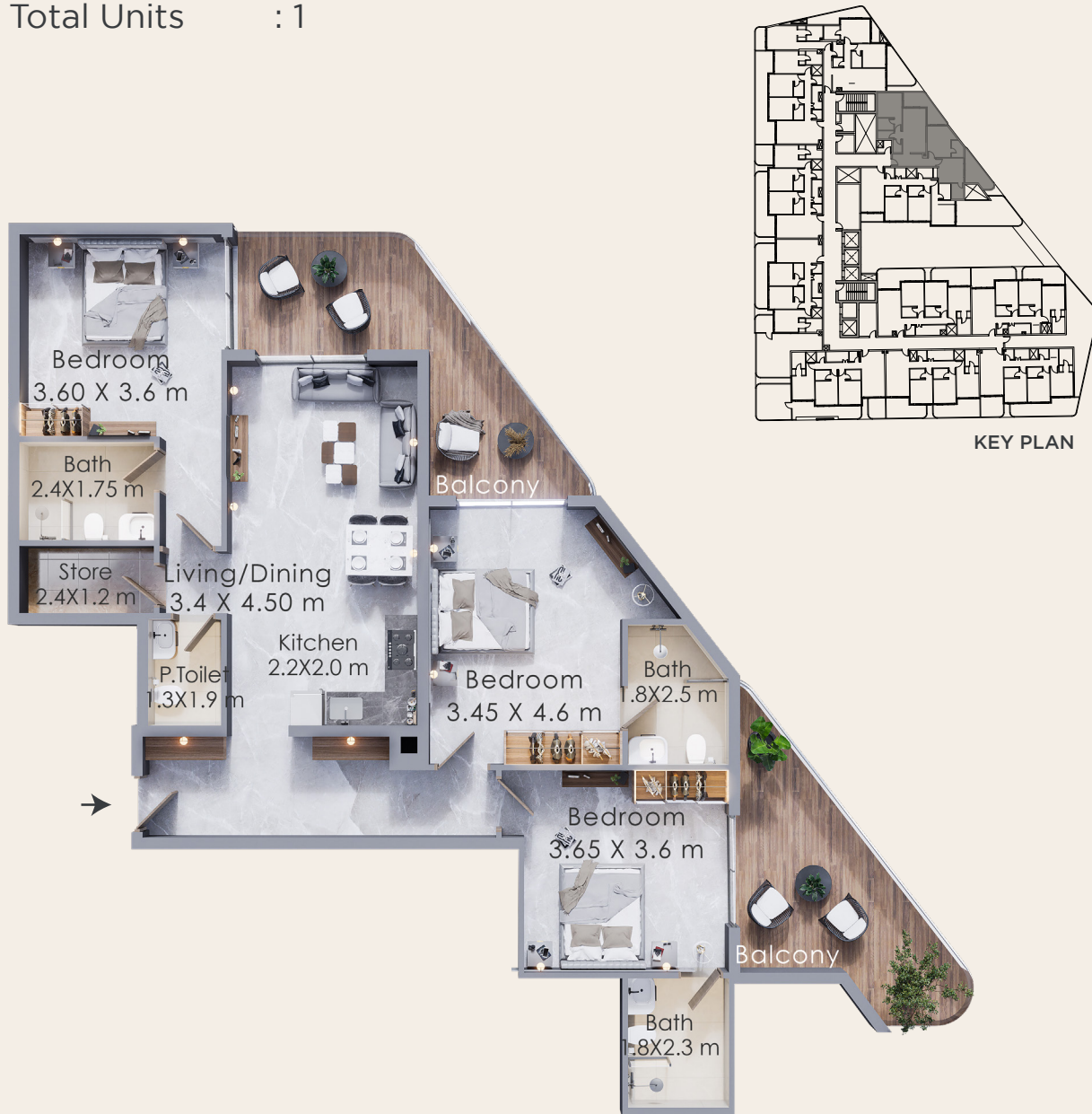
\*\*The unit layout shown above is a typical layout where there can be minor changes in room dimensions, total area and balcony sizes in the actual units.



# 3 BHK

Type 01

Suite Area : 1162.08 sqft  
Balcony Area : 314.85 sqft  
Total Area : 1477.00 sqft  
Total Units : 1



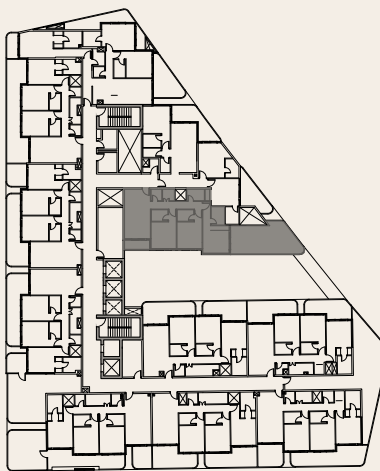
\*\*The unit layout shown above is a typical layout where there can be minor changes in room dimensions, total area and balcony sizes in the actual units.



# 3 BHK

## Type 02

Suite Area : 1052.93 sqft  
Balcony Area : 432.28 sqft  
Total Area : 1485.00 sqft  
Total Units : 1



KEY PLAN



\*\*The unit layout shown above is a typical layout where there can be minor changes in room dimensions, total area and balcony sizes in the actual units.

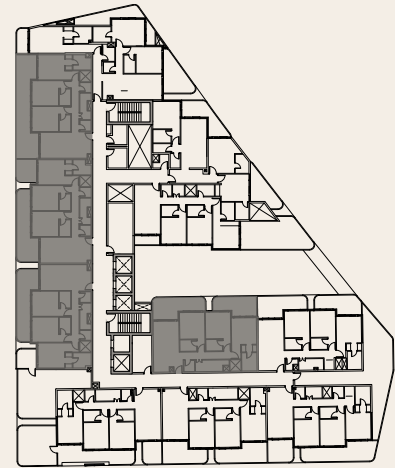




# 3 BHK

## Type 03

Suite Area : 1079.95 sqft  
Balcony Area : 339.6 sqft  
Total Area : 1420.00 sqft  
Total Units : 4



KEY PLAN



\*\*The unit layout shown above is a typical layout where there can be minor changes in room dimensions, total area and balcony sizes in the actual units.

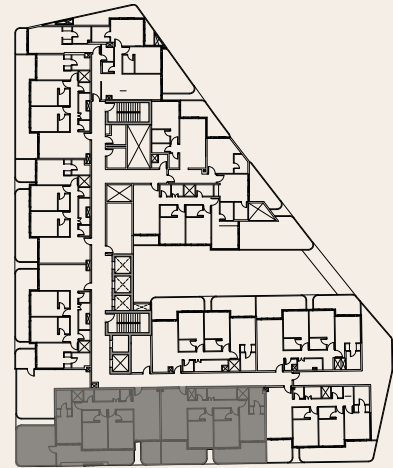




# 3 BHK

## Type 04

Suite Area : 1070.16 sqft  
Balcony Area : 348.43 sqft  
Total Area : 1419.00 sqft  
Total Units : 2



KEY PLAN



\*\*The unit layout shown above is a typical layout where there can be minor changes in room dimensions, total area and balcony sizes in the actual units.

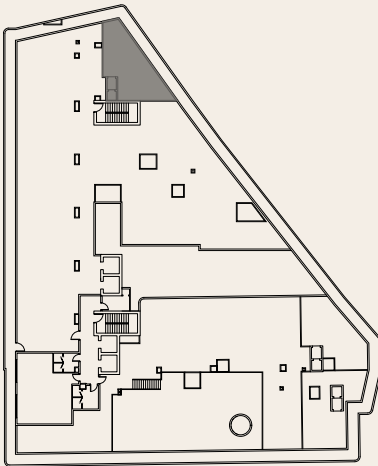


# 3 BHK

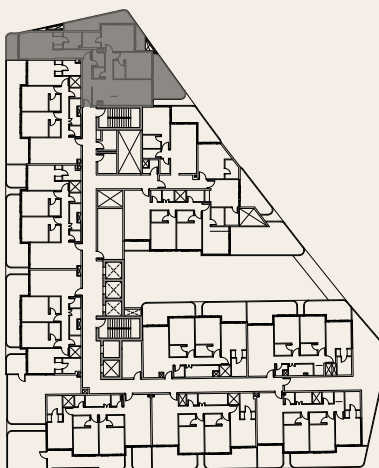
## Type 05

---

Suite Area	: 1283.50	sqft
Balcony Area	: 431.74	sqft
Terrace Gar.	: 694.00	sqft
Total Area	: 2409.00	sqft
Total Units	: 1	



TERRACE FLOOR



APARTMENT LAYOUT    **KEY PLAN**



\*\*The unit layout shown above is a typical layout where there can be minor changes in room dimensions, total area and balcony sizes in the actual units.

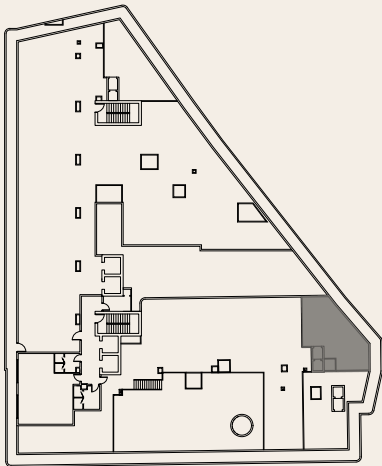


# 3 BHK

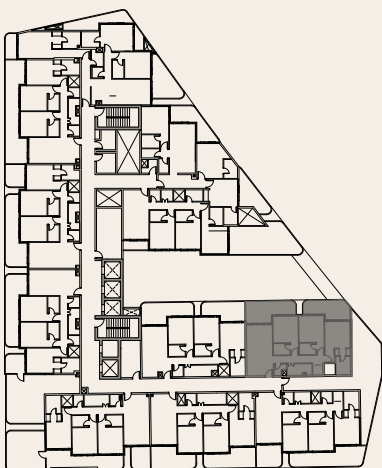
## Type 06

---

Suite Area	: 1080.70	sqft
Balcony Area	: 335.08	sqft
Terrace Gar.	: 719.00	sqft
Total Area	: 2135.0	sqft
Total Units	: 1	



TERRACE FLOOR



APARTMENT LAYOUT    **KEY PLAN**



\*\*The unit layout shown above is a typical layout where there can be minor changes in room dimensions, total area and balcony sizes in the actual units.

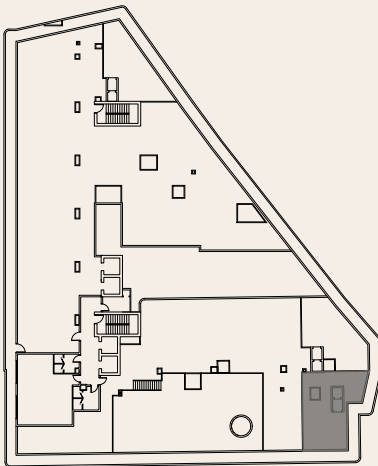


# 3 BHK

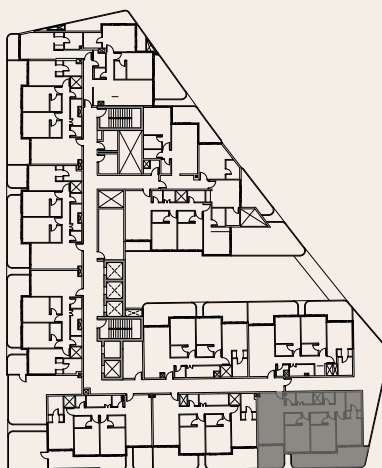
Type 07

---

Suite Area	: 1090.93	sqft
Balcony Area	: 362.74	sqft
Terrace Gar.	: 749.00	sqft
Total Area	: 2203.00	sqft
Total Units	: 1	



TERRACE FLOOR



APARTMENT LAYOUT    **KEY PLAN**



\*\*The unit layout shown above is a typical layout where there can be minor changes in room dimensions, total area and balcony sizes in the actual units.