



OCEAN HOUSE

ELLINGTON

A STATE OF FLOW

THE ART
OF PALM
ISLAND
LIVING

Since 2014, we have approached every project with a deep understanding of the human experience. We believe our devotion to craft and exceptional detail is what makes our developments stand out among Dubai's expanding skyline, and beautiful islands, in ways that few buildings can.

Ocean House epitomises this philosophy at the highest level yet. Our second development on Palm Jumeirah, it perfects the art of island living.

LIVE IN DESIGN



An aerial photograph of Palm Jumeirah, an artificial island in Dubai, United Arab Emirates. The island is a long, narrow strip of land that curves into the Arabian Gulf. In the foreground, the deep blue water of the sea is visible. The island is densely packed with buildings, including the iconic Atlantis The Palm hotel with its central tower. In the background, the Dubai city skyline is visible, featuring numerous skyscrapers. The sky is filled with soft, golden clouds, indicating a sunset or sunrise. The overall scene is a blend of natural beauty and urban development.

A MASTERPIECE OF
OCEAN EXPANSION

The 17 fronds of Palm Jumeirah reach into the Arabian Gulf, immersing themselves in the ocean's ethereal charm. With views out to sea and back across the city skyline, the island connects Dubai's rich maritime heritage with its insatiable appetite for innovation, expansion and limitless possibilities.

DRIVING DISTANCES

THE PALM JUMEIRAH

01
MINUTE
The Boardwalk Palm Jumeirah

02
MINUTES
Atlantis The Palm

05
MINUTES
The Pointe Palm Jumeirah

10
MINUTES
The View at The Palm

10
MINUTES
Nakheel Mall

15
MINUTES
Dubai Marina

15
MINUTES
Dubai Harbour

20
MINUTES
Emirates Golf Club

20
MINUTES
Burj Al Arab

25
MINUTES
Ain Dubai

25
MINUTES
Mall of The Emirates

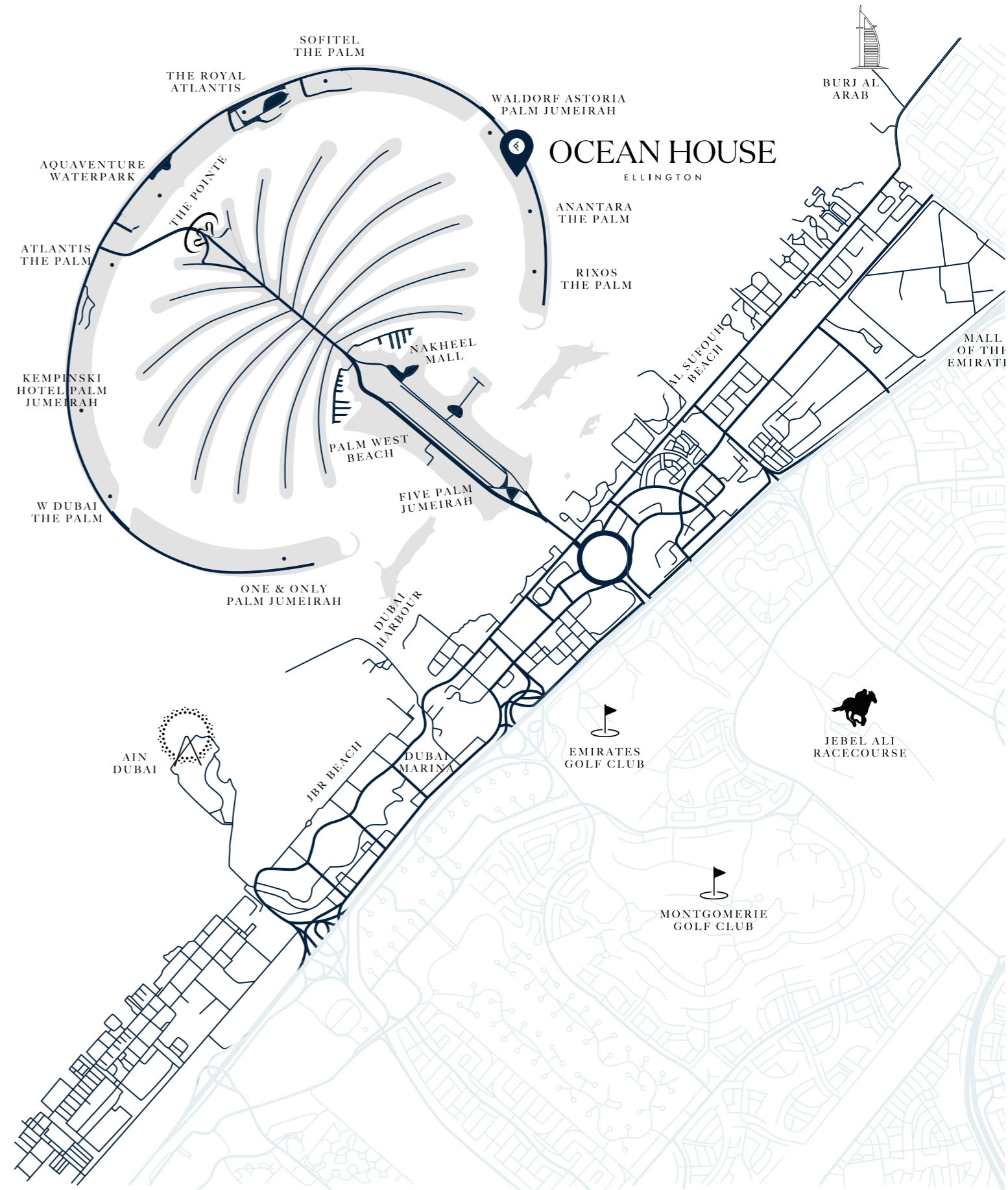
25
MINUTES
Dubai Mall & Burj Khalifa

25
MINUTES
Museum of the Future

30
MINUTES
Dubai International Financial Centre

35
MINUTES
Dubai International Airport

38
MINUTES
Dubai World Central Airport



WELCOME TO A SEAMLESS STATE OF FLOW

WHERE
EXPERIENCES
BECOME
LIFESTYLES

Follow the call of the ocean and discover a modernist way of life, led by design. The building's flowing physical facade is akin to the way the interiors fit seamlessly with the lives and lifestyles of its residents — a place to find a new way to co-exist with the ocean.





ARCHITECTURAL
SYNERGY



ARCHITECTURAL SYNERGY

ALWAYS
IN
MOTION

Emulating the undulation of waves and tides, the architectural form of Ocean House appears always in motion. Its curves have a fluidity that draws your eye to the building's connection with the Gulf and the calming nature of its beachside location.

A NEW ARRIVAL

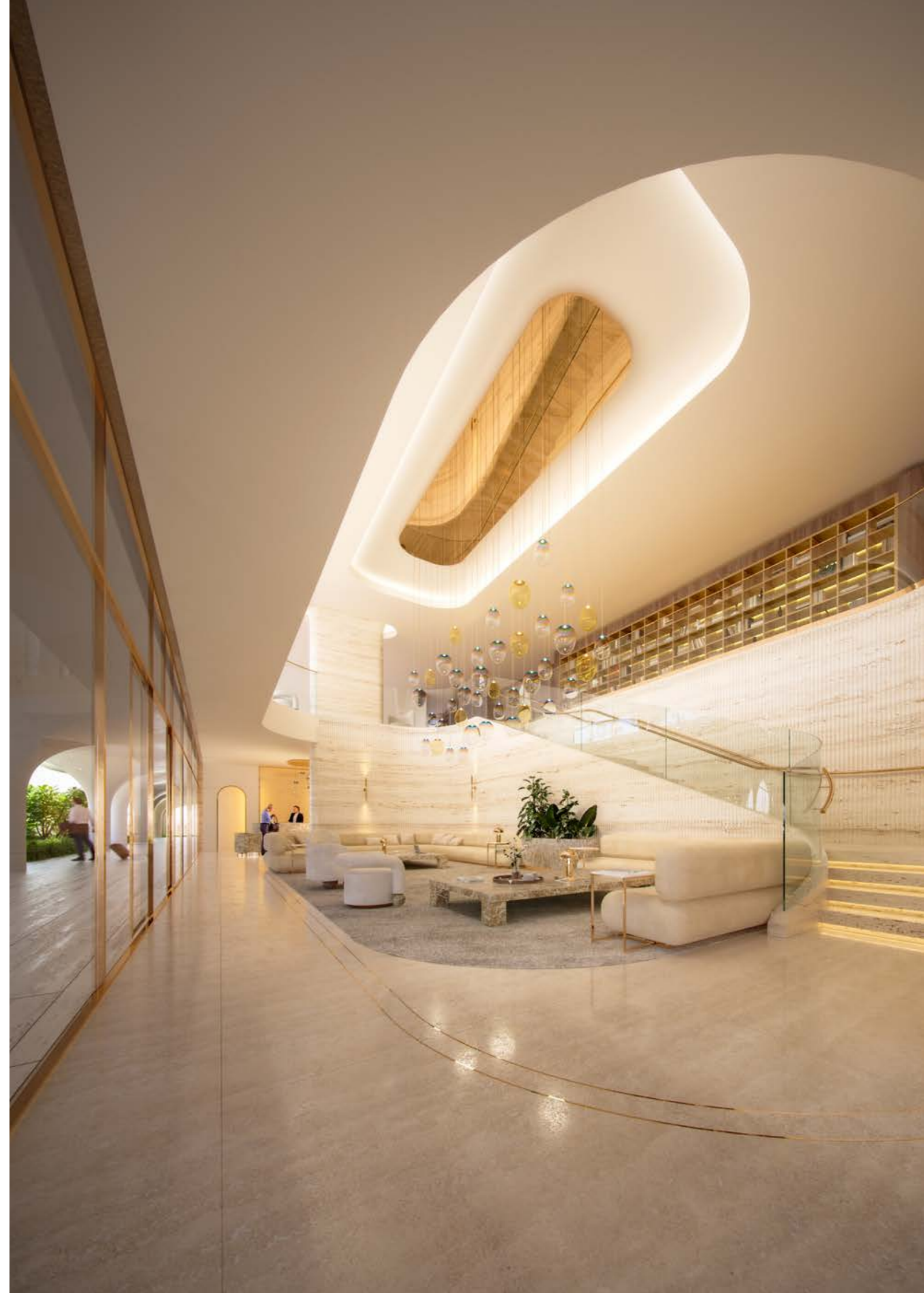


THE LOBBY

WHERE
THE
OCEAN
MEETS
THE
SAND

Residents are welcomed home to a vast double-height lobby with a hotel-style pick-up and drop-off. Spanning two floors of the building, the Lobby features a beautiful carved stone reception desk, inviting you to discover a comfortable lounge and private co-working spaces.

A wooden sculptural staircase takes you to the first floor, where an art gallery and skyline views from the terrace await. At this upper level, there is also access to the property's exclusive spa and salt caves via the privacy of a corridor with curved walls in natural stone.





FOLLOW THE OCEAN

At Ocean House, a 'lifestyle' is not defined by how many amenities are on offer, or even by how exclusive they are. Here, they are transformed into experiences, made unforgettable by design.



WATER

Next in your odyssey through the elements, the refreshing cascades of rain showers, soothing hydromassage and chromotherapy showers trigger a multitude of rejuvenating senses — combined with aromatherapy steam showers and mineral-enriched power showers, you are left feeling renewed.



SALT

Health and well being is at the heart of Ocean House.
And the wellness studio is the pulse. Embark on a journey through the
healing properties of salt and water with halo therapy salt cave and kneip
path walks, infrared sauna and steam rooms.





WELLNESS SPA

Salt Cave

Steam

Infrared
Sauna

AIR

Wellness at Ocean House flows through the building like a sea breeze. Accessible from the lobby, residents have private access to an outdoor yoga area with a calming water feature, a fitness gym looking out over the swimming pool view and changing areas featuring steam rooms, a sauna and an enclosed outdoor shower.







THE CLUBHOUSE

EXCELLENCE
FOR
ALL
TASTES

The decadence of The Clubhouse is an invitation for all tastes and occasions to excel. The space is a reconfigurable lounge and dining area complete with a show kitchen for private chefs, wine and cigar rooms, as well as a bar with games tables and a plush private cinema room.



CHILDREN'S PLAY AREA

AN
OCEAN
ADVENTURE
FOR
KIDS

Fun and games for our younger residents are not forgotten. On the ground floor they will find a unique play area with a climbing wall, storybooks, art areas, sensory walls and a motor skills busy board.





A high-end architectural rendering of a modern residence. The building features a prominent curved glass facade with large, arched windows and a thick, white, sculptural concrete structure. The interior is visible through the glass, showing a dining area with a table and chairs, and a lounge area with sofas. Outside, there is a well-manicured lawn with two lounge chairs in the foreground, a swimming pool to the right, and a curved stone path. The scene is set during the day with soft lighting, and palm trees are visible in the background.

INTERIOR
ENCHANTMENT



The vast interiors of Ocean House introduce textures and funnels of light that speak the language of the sea: calming, refreshing, soothing and powerful. White marble, travertine, warm oak and earthy upholstery bring a natural harmony to open and intimate spaces. This counteracts the patterned rugs and champagne gold fixtures that exude the property's unique modern character.

LIVING ROOMS

A LIFE BY THE OCEAN

Upon an expanse of natural marble that extends through the apartments, sumptuous living spaces look out across the water from curved balconies – with Royal Atlantis to the West and Burj Al Arab to the North East. These stunning rooms are adorned in plush furnishing and the finer details of living.





KITCHENS



O P E N
P L A N
O P E N
M I N D

Blending seamlessly into living spaces, the kitchen follows the line-of-sight from out at sea. It is centred around a grand island in natural stone and surrounded by soft-toned cabinetry. Subtle metallic finishes can be found in fittings and appliances, showcasing a level of detailing that's become synonymous with Ellington Properties.



BEDROOMS

YOUR PRIVATE VIEW OF THE OCEAN

The most intimate spaces in the building, bedrooms can be soothing, rejuvenating, awakening and nourishing over 24 hours. They are designed to give every resident a unique sense of belonging by harmonising with their lifestyles as seamlessly as the sun rising over the ocean and setting over the Dubai skyline.







BATHROOMS

WELLNESS RITUALS

Living In an ocean paradise, apartments are gifted with bathrooms designed to promote rituals of wellness. Taking inspiration from nature with textured stone and marble, the bathrooms feature large UV stable free-standing bathtubs designed to retain heat, fully sealed flush stone counters and sensor-touch wellness spa areas built-in.

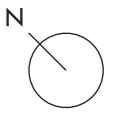
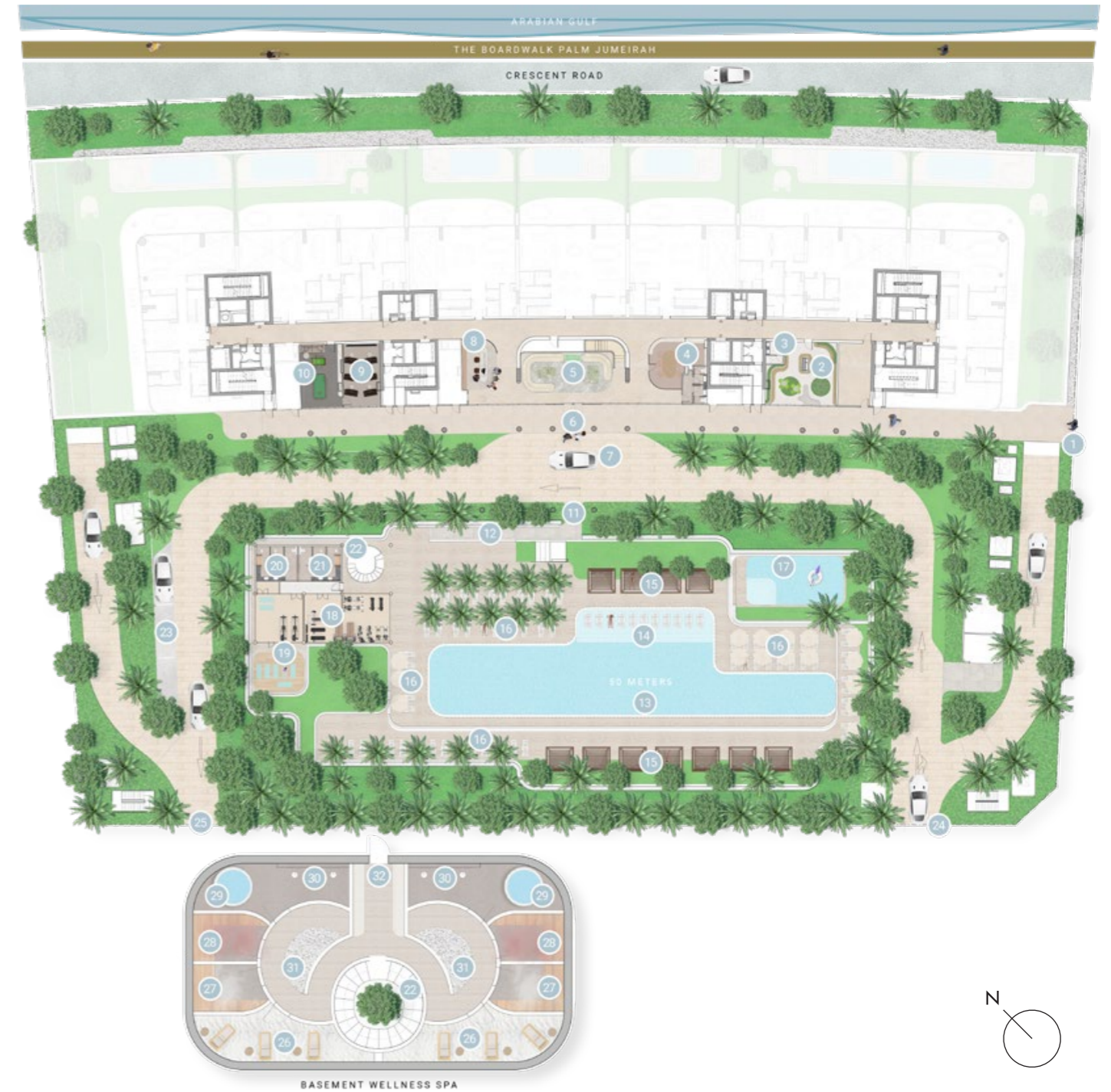


FLOOR
PLANS



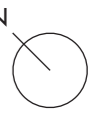
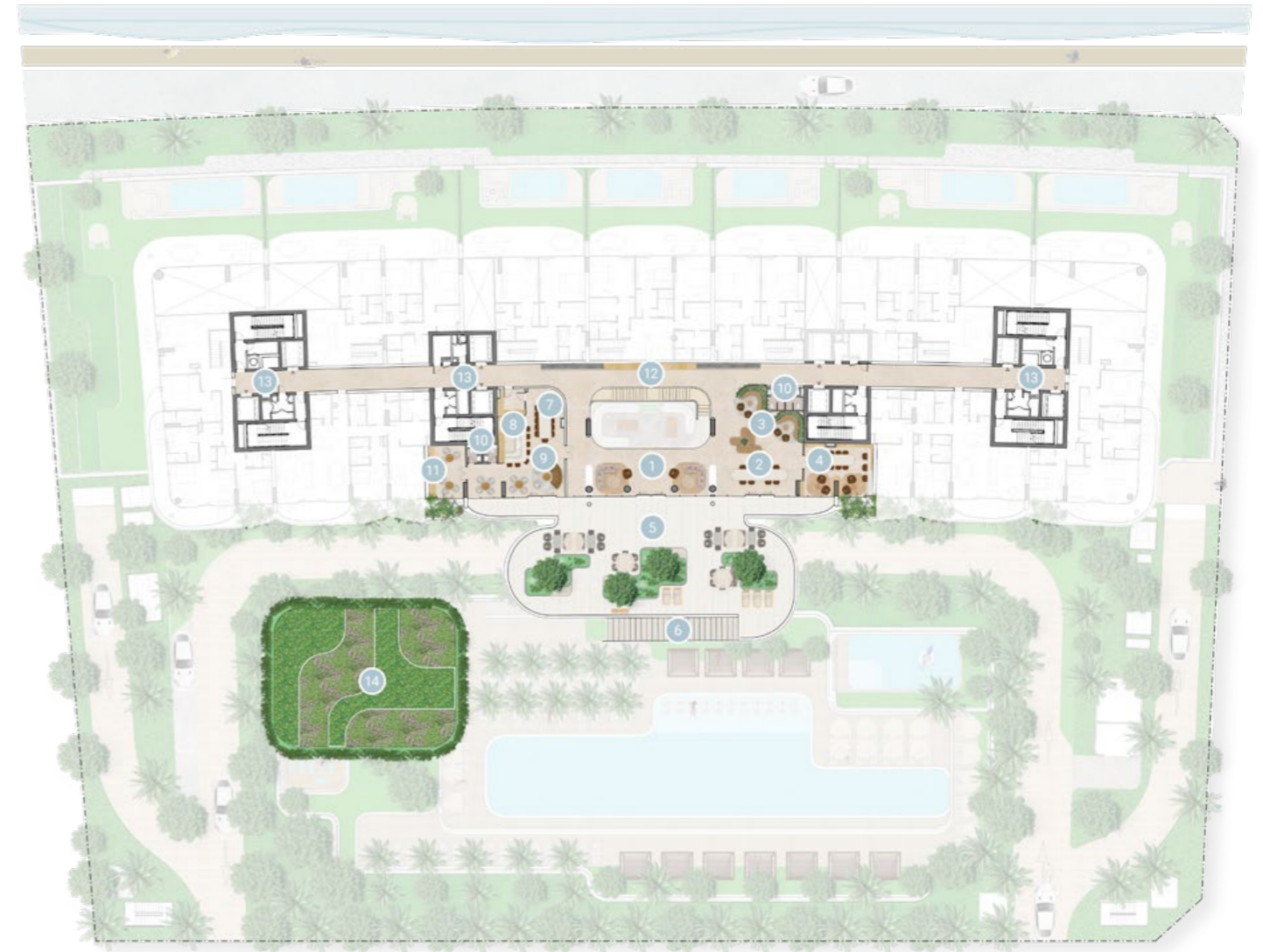
**GROUND FLOOR
AMENITIES PLAN**

- 01 MAIN ENTRANCE
- 02 KIDS PLAY AREA
- 03 KIDS BATHROOM
- 04 MEETING ROOM
- 05 LOBBY LOUNGE
- 06 LOBBY ENTRANCE
- 07 DROP-OFF AREA
- 08 LOBBY RECEPTION
- 09 CINEMA ROOM
- 10 GAMES ROOM
- 11 ACCESS TO THE POOL TERRACE
- 12 FEATURE STAIRCASE
- 13 OLYMPIC SIZE POOL
- 14 BAJA SHELF
- 15 CABANAS
- 16 SUN LOUNGERS' AREA
- 17 KIDS POOL
- 18 FITNESS STUDIO
- 19 OUTDOOR YOGA DECK
- 20 FEMALE CHANGE ROOM
- 21 MALE CHANGE ROOM
- 22 ACCESS TO WELLNESS SPA
- 23 VISITOR PARKING
- 24 VEHICLE ENTRANCE
- 25 VEHICLE EXIT
- 26 SALT CAVE
- 27 STEAM ROOM
- 28 INFRARED SAUNA ROOM
- 29 PLUNGE ROOM
- 30 AROMATHERAPY EXPERIENCE SHOWER
- 31 HYDROTHERAPY PATH WALK
- 32 ACCESS TO BASEMENT PARKING



**1ST FLOOR
AMENITIES PLAN**

- 01 LOUNGE AREA
- 02 COMMUNAL TABLE
- 03 CO-WORKING AREA
- 04 LIBRARY ROOM
- 05 OUTDOOR TERRACE LOUNGE
- 06 ACCESS TO POOL DECK
- 07 PRIVATE DINING
- 08 SHOW KITCHEN
- 09 PRIVATE LOUNGE
- 10 WASHROOM
- 11 CIGAR ROOM
- 12 GALLERY WALL
- 13 LIFT LOBBIES
- 14 ROOFTOP GARDEN



A still life composition featuring a white ceramic vase, a lit candle, and folded linens on a textured surface. The scene is dimly lit, with the candle providing a warm glow. The vase is the central focus, with the candle to its right and linens in the foreground and background. The overall mood is serene and minimalist.

SUSTAINABILITY

Our buildings are cooled and heated with low noise energy-efficient FCUs, with a system that collects condensation for irrigation. Our fitness centres are equipped with eco-conscious facilities. Our parking spaces accommodate charging points for electric vehicles. As our developments continue to expand across Dubai, our focus is on going above and beyond best practices to support environmentally-friendly living with beautiful design.

A wall-mounted sculpture consisting of numerous stylized flower-like forms. Each form is made of thin, metallic-looking material, possibly brass or gold leaf, and is painted in shades of gold and brown. The flowers are arranged in a dense, overlapping pattern across the wall, creating a sense of depth and movement. The background is a plain, light-colored wall.

ELLINGTON ART FOUNDATION

Ellington Art Foundation aims to nurture the UAE's emerging talent across painting, photography, sculpture, installation and mixed media. Through workshops and competitions, we use our position as a leading design-led developer to help raise the profile of regional artists by showcasing their work in our buildings. In our latest project, Ellington House displays a bespoke mural across the reception area as well as paintings and sculptures throughout.



ELLINGTON
PROPERTIES

NORTHACRE

SOL
PROPERTIES