

01 TYPICAL FLOORS KEY PLAN
AR-105 SCALE - 1:125

AUTHORITY STAMP:

KEY PLAN:



GENERAL NOTES:

1. ALL LEVELS AND PLOT COORDINATES INDICATED ARE IN METERS AND ARE FLOOR FINISH LEVEL OR TOP OF WALL LEVEL UNLESS NOTED OTHERWISE (U.N.O.).
 2. DO NOT SCALE THIS DRAWING FOR THE PURPOSE OF MEASUREMENT. REFER WRITTEN DIMENSIONS WHICH ARE IN MILLIMETERS.
 3. REFER TO RELEVANT SURVEY, STRUCTURAL, BUILDING SERVICES, INTERIORS, LANDSCAPE AND ALL SPECIALIST CONSULTANTS DRAWINGS AND SPECIFICATIONS BEFORE PROCEEDING WITH THE WORKS.
 4. DETAIL DRAWINGS SHOWN ARE INDICATIVE OF DESIGN INTENT. CONTRACTOR TO SUBMIT SHOP DRAWINGS AND SAMPLES AS PER SPECIFICATIONS TO DESIGNER'S APPROVAL PRIOR TO CONSTRUCTION OR FABRICATION.
 5. CONSTRUCTION MUST CONFORM TO ALL APPLICABLE CODES AND REQUIREMENTS OF STATUTORY AUTHORITIES AS APPLICABLE.
 6. THE CONTRACTOR USING DRAWINGS NOT SPECIFICALLY MARKED "ISSUED FOR CONSTRUCTION" MUST ASSUME FULL RESPONSIBILITY AND BEAR COSTS FOR ANY CORRECTIONS AND DAMAGES RESULTING FROM THE WORK.
 7. THE CONTRACTOR SHALL VERIFY THE CONTENT OF THIS DRAWING AND SHALL NOTIFY THE CONSULTANTS IN WRITING OF ANY DEVIATION OR DISCREPANCY.
 8. CORRECTNESS, BUILDABILITY, AND STABILITY OF THE CONSTRUCTION SHALL REMAIN SOLE RESPONSIBILITY OF THE CONTRACTOR.
- SPECIAL NOTES:
1. THIS DRAWING, THE DESIGNS, AND DETAILS SHOWN ARE THE COPYRIGHT OF STUDIO 360 AND SHALL NOT BE COPIED OR REPRODUCED IN ANY FORM WITHOUT THEIR WRITTEN CONSENT.
 2. SITE DATUM FOR ± 0.00M = +9.240 DMD LVL.



REVISIONS:

NO.	DATE	REVISION DESCRIPTION	CHK.	APPR.

STATUS:

PROJECT TITLE:

AFCH045
2B+G+2P+7+ROOF
HOTEL APARTMENT
5911850
ALFURJAN, DUBAI

OWNER / DEVELOPER:

AZIZI
AZIZI DEVELOPMENTS L.L.C
SHEIKH ZAYED ROAD,
DUBAI, UAE.
P.O. BOX: 121885
TEL: +971 4 333 2460
FAX: +971 4 333 2932
WEBSITE: www.azizidevelopments.com

LEAD CONSULTANT:

STUDIO 360
CONRAD HOTEL
SUITE NO. 1502 15TH FLOOR,
SHEIKH ZAYED ROAD,
DUBAI, UAE.
P.O. BOX: 121885
TEL: +971 4 333 2460
FAX: +971 4 333 2932
WEBSITE: www.studio360design.com

DRAWN: **HH/JJ** SCALE: **1:125**

REVIEWED: **HB** DATE: **06.03.2024**

APPROVED: **SP** DM: **RD**

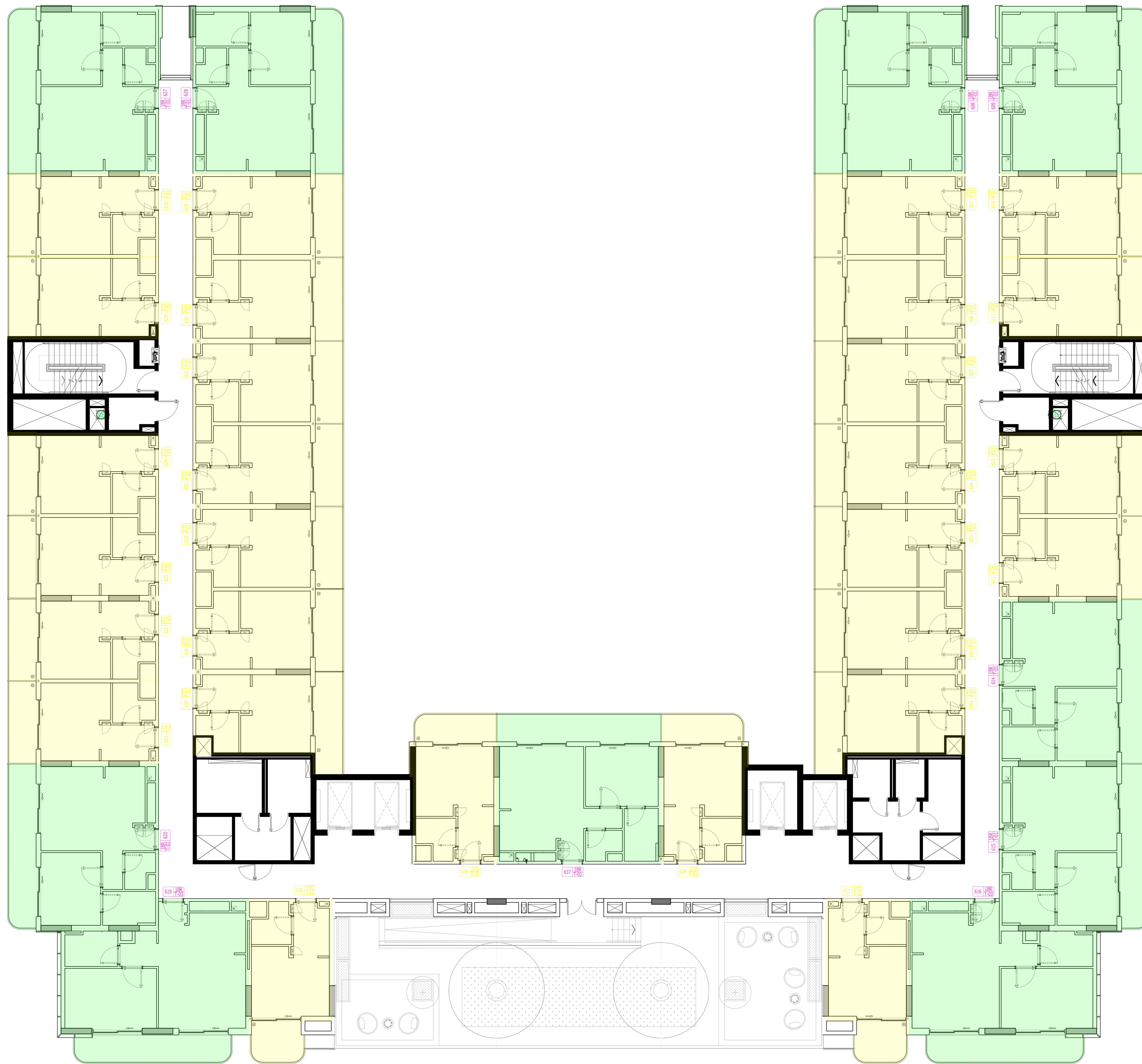
DWG. TITLE:

TYPICAL FLOOR KEY PLAN

SHEET. NO. REV. NO.

AR-105 00

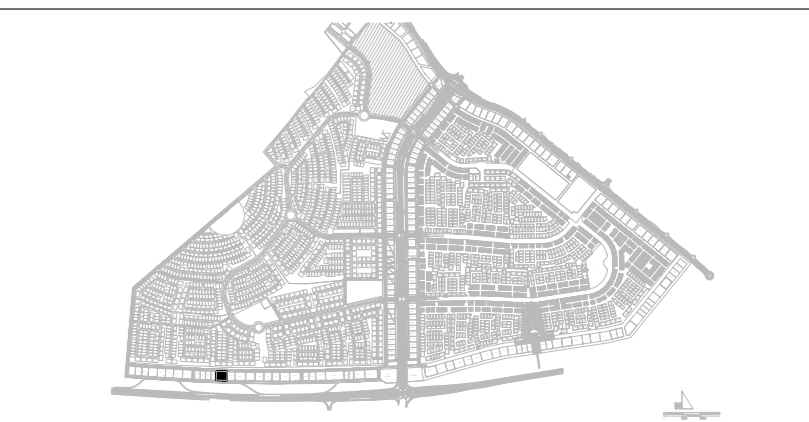
File Path: Z:\03_PROJ\2023\1122_AFCH 045\02_ARC\01_GN\01_SALES & MARKETING FOLDERS\01\06_UNIT PLANS FOR SPA\DWG\KEY PLANS.dwg Save Date: 6-Mar-24 Saved By: Hamdan.Hassan



01 **6TH FLOOR KEY PLAN**
AR-109 SCALE - 1:125

AUTHORITY
STAMP:

KEY PLAN:



GENERAL NOTES:

1. ALL LEVELS AND PLOT COORDINATES INDICATED ARE IN METERS AND ARE FLOOR FINISH LEVEL OR TOP OF WALL LEVEL UNLESS NOTED OTHERWISE (U.N.O.).
 2. DO NOT SCALE THIS DRAWING FOR THE PURPOSE OF MEASUREMENT. REFER WRITTEN DIMENSIONS WHICH ARE IN MILLIMETERS.
 3. REFER TO RELEVANT SURVEY, STRUCTURAL, BUILDING SERVICES, INTERIORS, LANDSCAPE AND ALL SPECIALIST CONSULTANTS DRAWINGS AND SPECIFICATIONS BEFORE PROCEEDING WITH THE WORKS.
 4. DETAIL DRAWINGS SHOWN ARE INDICATIVE OF DESIGN INTENT. CONTRACTOR TO SUBMIT SHOP DRAWINGS AND SAMPLES AS PER SPECIFICATIONS TO DESIGNER'S APPROVAL PRIOR TO CONSTRUCTION OR FABRICATION.
 5. CONSTRUCTION MUST CONFORM TO ALL APPLICABLE CODES AND REQUIREMENTS OF STATUTORY AUTHORITIES AS APPLICABLE.
 6. THE CONTRACTOR USING DRAWINGS NOT SPECIFICALLY MARKED "ISSUED FOR CONSTRUCTION" MUST ASSUME FULL RESPONSIBILITY AND BEAR COSTS FOR ANY CORRECTIONS AND DAMAGES RESULTING FROM THE WORK.
 7. THE CONTRACTOR SHALL VERIFY THE CONTENT OF THIS DRAWING AND SHALL NOTIFY THE CONSULTANTS IN WRITING OF ANY DEVIATION OR DISCREPANCY.
 8. CORRECTNESS, BUILDABILITY, AND STABILITY OF THE CONSTRUCTION SHALL REMAIN SOLE RESPONSIBILITY OF THE CONTRACTOR.
- SPECIAL NOTES:
1. THIS DRAWING, THE DESIGNS, AND DETAILS SHOWN ARE THE COPYRIGHT OF STUDIO 360 AND SHALL NOT BE COPIED OR REPRODUCED IN ANY FORM WITHOUT THEIR WRITTEN CONSENT.
 2. SITE DATUM FOR ± 0.00M = +9.240 DMD LVL.



REVISIONS:

NO.	DATE	REVISION DESCRIPTION	CHK.	APPR.

STATUS:

PROJECT TITLE:

AFCH045
2B+G+2P+7+ROOF
HOTEL APARTMENT
5911850
ALFURJAN, DUBAI

OWNER /
DEVELOPER:



AZIZI DEVELOPMENTS LLC
SHEIKH ZAYED ROAD,
DUBAI, UAE.
P.O. BOX: 121885
TEL: +971 4 332 2460
FAX: +971 4 332 2932
WEBSITE: www.azizidevelopments.com

LEAD
CONSULTANT:



CONRAD HOTEL
SUITE NO. 1502 15TH FLOOR,
SHEIKH ZAYED ROAD,
DUBAI, UAE.
P.O. BOX: 121885
TEL: +971 4 326 5154
FAX: +971 4 332 2932
WEBSITE: www.studio360design.com

DRAWN: **HH/JJ**

SCALE: **1:125**

REVIEWED: **HB**

DATE: **06.03.2024**

APPROVED: **SP**

DM: **RD**

DWG. TITLE:

6TH FLOOR KEY PLAN

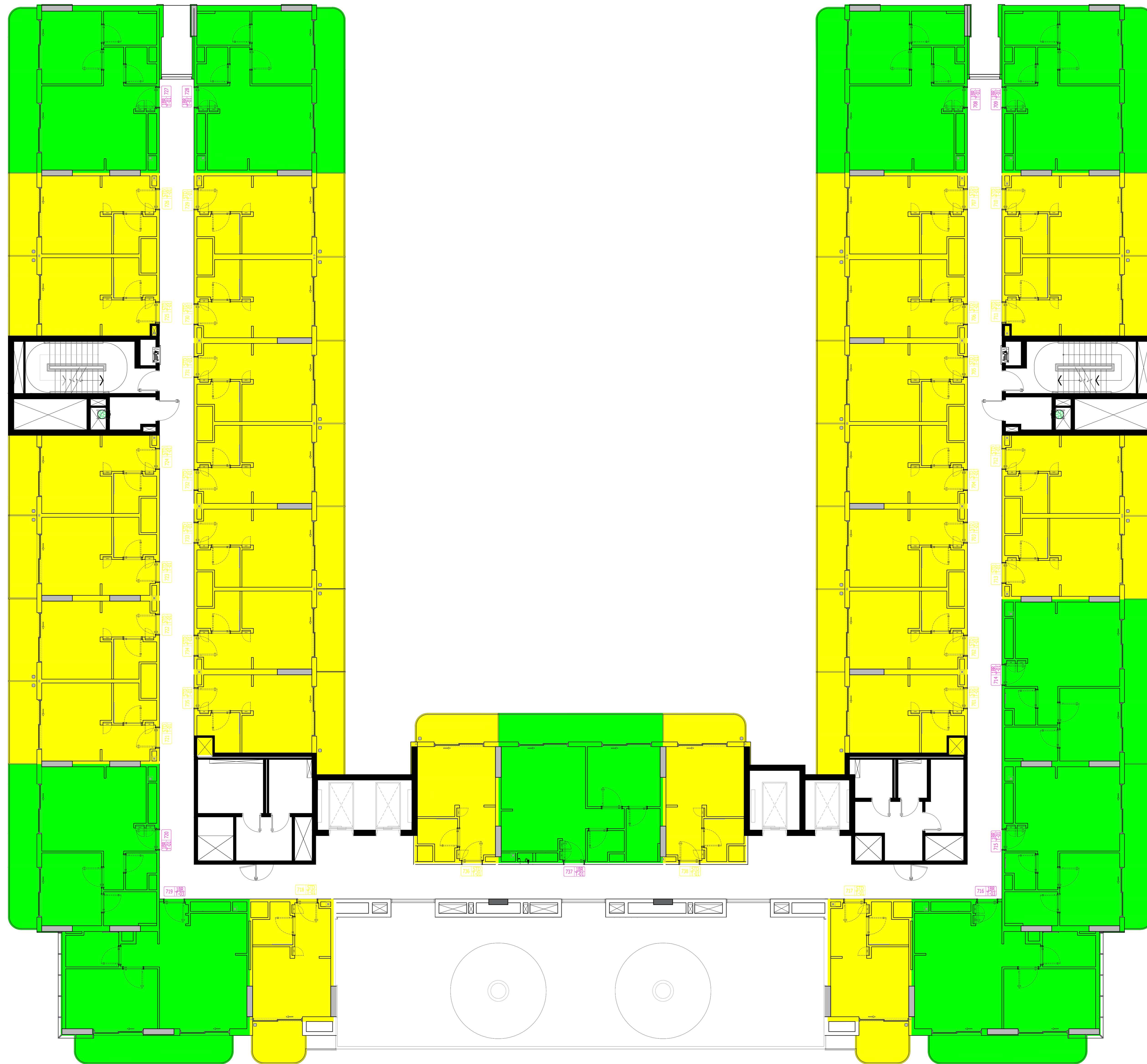
SHEET. NO.

AR-109

REV.
NO.

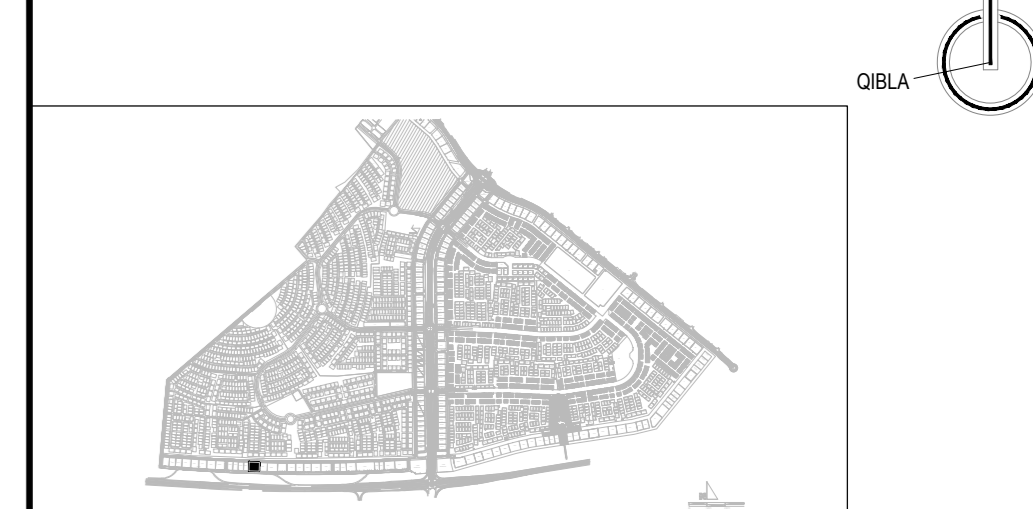
00

File Path: Z:\05_PROJ\2023\1122_AFCH 045\02_ARC\01_GN\01_SALES & MARKETING FOLDERS\01\06_UNIT PLANS FOR SPA\DWG\KEY PLANS.dwg Save Date: 6-Mar-24 Saved By: Hamdan.Hassan



AUTHORITY STAMP:

KEY PLAN:



GENERAL NOTES:

1. ALL LEVELS AND PLOT COORDINATES INDICATED ARE IN METERS AND ARE FLOOR FINISH LEVEL OR TOP OF WALL LEVEL UNLESS NOTED OTHERWISE (U.N.O.).
2. DO NOT SCALE THIS DRAWING FOR THE PURPOSE OF MEASUREMENT. REFER WRITTEN DIMENSIONS WHICH ARE IN MILLIMETERS.
3. REFER TO RELEVANT SURVEY, STRUCTURAL, BUILDING SERVICES, INTERIORS, LANDSCAPE AND ALL SPECIALIST CONSULTANTS DRAWINGS AND SPECIFICATIONS BEFORE PROCEEDING WITH THE WORKS.
4. DETAIL DRAWINGS SHOWN ARE INDICATIVE OF DESIGN INTENT. CONTRACTOR TO SUBMIT SHOP DRAWINGS AND SAMPLES AS PER SPECIFICATIONS TO DESIGNERS APPROVAL PRIOR TO CONSTRUCTION OR FABRICATION.
5. CONSTRUCTION MUST CONFORM TO ALL APPLICABLE CODES AND REQUIREMENTS OF STATUTORY AUTHORITIES AS APPLICABLE.
6. THE CONTRACTOR USING DRAWINGS NOT SPECIFICALLY MARKED 'ISSUED FOR CONSTRUCTION' MUST ASSUME FULL RESPONSIBILITY AND BEAR COSTS FOR ANY CORRECTIONS AND DAMAGES RESULTING FROM THE WORK.
7. THE CONTRACTOR SHALL VERIFY THE CONTENT OF THIS DRAWING AND SHALL NOTIFY THE CONSULTANTS IN WRITING OF ANY DEVIATION OR DISCREPANCY.
8. CORRECTNESS, BUILDABILITY, AND STABILITY OF THE CONSTRUCTION SHALL REMAIN SOLE RESPONSIBILITY OF THE CONTRACTOR.
9. THIS DRAWING, THE DESIGNS, AND DETAILS SHOWN ARE THE COPYRIGHT OF STUDIO 360 AND SHALL NOT BE COPIED OR REPRODUCED IN ANY FORM WITHOUT THEIR WRITTEN CONSENT.
10. SITE DATUM FOR ± 0.00M = +2.240 OMD LVL.

SPECIAL NOTES:

- 1.
- 2.
- 3.



REVISIONS:

NO.	DATE	REVISION DESCRIPTION	CHK.	APPR.

STATUS:

PROJECT TITLE:

AFCH045
2B+G+2P+7+ROOF
HOTEL APARTMENT
5911850
ALFURJAN, DUBAI

OWNER/ DEVELOPER:

AZIZI
 AZIZI DEVELOPMENTS L.L.C
 SHEIKH ZAYED ROAD,
 DUBAI, UAE.
 P.O. BOX: 101080
 TEL: +971 4 332 2400
 FAX: +971 4 332 9100
 WEBSITE: www.azizidevelopments.com

LEAD CONSULTANT:

STUDIO 360
 CONRAD HOTEL,
 SUITE NO. 1502 15TH FLOOR,
 SHEIKH ZAYED ROAD,
 DUBAI, UAE.
 P.O. BOX: 101080
 TEL: +971 4 332 9100
 FAX: +971 4 332 9100
 WEBSITE: www.studio360.design

DRAWN: HH/JJ

SCALE: 1:125

REVIEWED: HB

DATE: 06.03.2024

APPROVED: SP

DM: RD

DWG. TITLE:

7TH FLOOR KEY PLAN

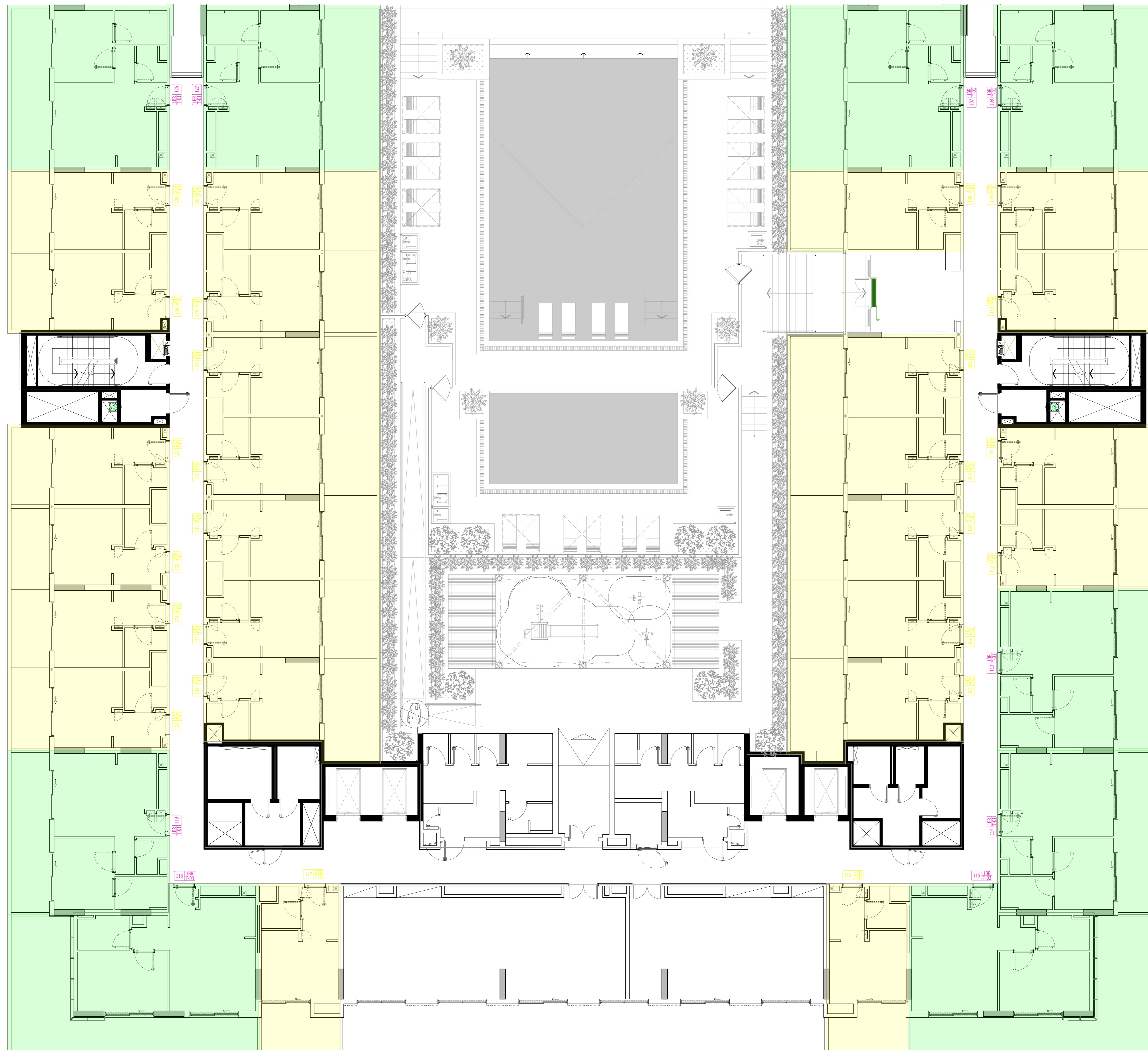
SHEET. NO.

AR-110

REV. NO.

00

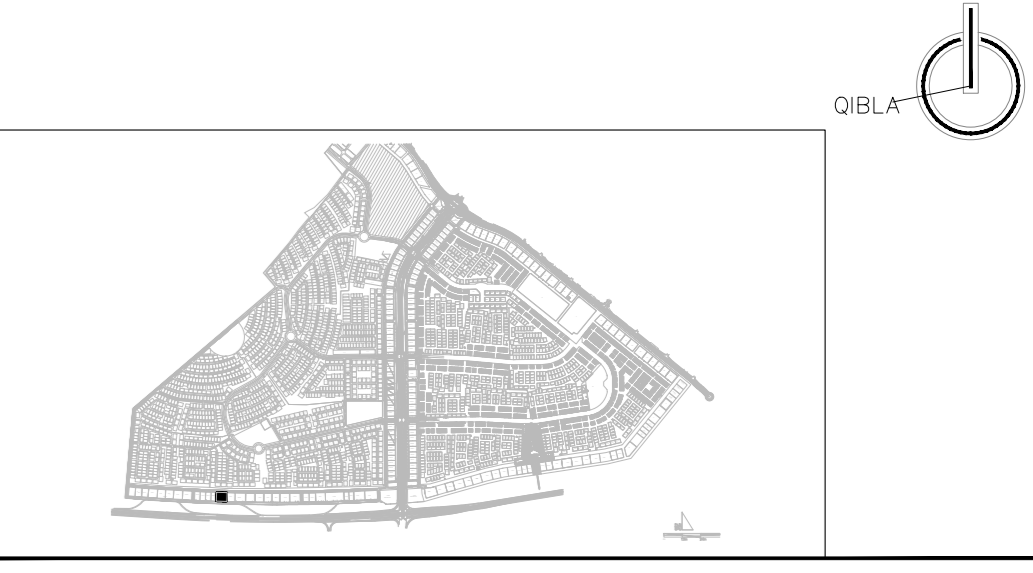
01
7TH FLOOR KEY PLAN
 AR-110 SCALE - 1:125



01 FIRST FLOOR KEY PLAN
AR-104 SCALE - 1:125

AUTHORITY
STAMP:

KEY PLAN:



GENERAL NOTES:

- ALL LEVELS AND PLOT COORDINATES INDICATED ARE IN METERS AND ARE FLOOR FINISH LEVEL OR TOP OF WALL LEVEL UNLESS NOTED OTHERWISE (U.N.O.).
 - DO NOT SCALE THIS DRAWING FOR THE PURPOSE OF MEASUREMENT. REFER WRITTEN DIMENSIONS WHICH ARE IN MILLIMETERS.
 - REFER TO RELEVANT SURVEY, STRUCTURAL, BUILDING SERVICES, INTERIORS, LANDSCAPE AND ALL SPECIALIST CONSULTANTS DRAWINGS AND SPECIFICATIONS BEFORE PROCEEDING WITH THE WORKS.
 - DETAIL DRAWINGS SHOWN ARE INDICATIVE OF DESIGN INTENT. CONTRACTOR TO SUBMIT SHOP DRAWINGS AND SAMPLES AS PER SPECIFICATIONS TO DESIGNER'S APPROVAL PRIOR TO CONSTRUCTION OR FABRICATION.
 - CONSTRUCTION MUST CONFORM TO ALL APPLICABLE CODES AND REQUIREMENTS OF STATUTORY AUTHORITIES AS APPLICABLE.
 - THE CONTRACTOR USING DRAWINGS NOT SPECIFICALLY MARKED "ISSUED FOR CONSTRUCTION" MUST ASSUME FULL RESPONSIBILITY AND BEAR COSTS FOR ANY CORRECTIONS AND DAMAGES RESULTING FROM THE WORK.
 - THE CONTRACTOR SHALL VERIFY THE CONTENT OF THIS DRAWING AND SHALL NOTIFY THE CONSULTANTS IN WRITING OF ANY DEVIATION OR DISCREPANCY.
 - CORRECTNESS, BUILDABILITY, AND STABILITY OF THE CONSTRUCTION SHALL REMAIN SOLE RESPONSIBILITY OF THE CONTRACTOR.
- SPECIAL NOTES:
- THIS DRAWING, THE DESIGN, AND DETAILS SHOWN ARE THE COPYRIGHT OF STUDIO 360 AND SHALL NOT BE COPIED OR REPRODUCED IN ANY FORM WITHOUT THEIR WRITTEN CONSENT.
 - SITE DATUM FOR ± 0.00M = +9.240 DMD LVL.



REVISIONS:

NO.	DATE	REVISION DESCRIPTION	CHK.	APPR.

STATUS:

PROJECT TITLE:
AFCH045
2B+G+2P+7+ROOF
HOTEL APARTMENT
5911850
ALFURJAN, DUBAI

OWNER / DEVELOPER:

AZIZI
AZIZI DEVELOPMENTS L.L.C
SHEIKH ZAYED ROAD,
DUBAI, UAE
P.O. BOX: 121885
TEL: +971 4 333 2460
FAX: +971 4 333 2932
WEBSITE: www.azizidevelopments.com

LEAD CONSULTANT:

STUDIO 360
CONRAD HOTEL
SUITE NO. 1502 15TH FLOOR,
SHEIKH ZAYED ROAD,
DUBAI, UAE
P.O. BOX: 121885
TEL: +971 4 333 2460
FAX: +971 4 333 2932
WEBSITE: www.studio360.design

DRAWN: **HH/JJ** SCALE: **1:125**

REVIEWED: **HB** DATE: **06.03.2024**

APPROVED: **SP** DM: **RD**

DWG. TITLE:
FIRST FLOOR KEY PLAN

SHEET. NO. **AR-104** REV. NO. **00**

File Path: Z:\03_PROJ\2023\1122_AFCH 045\02_ARCH\01_GN\01_SALES & MARKETING FOLDERS\0106_UNIT PLANS FOR SPA\DWG\KEY PLANS.dwg Save Date: 6-Mar-24 Saved By: Hamdan.Hassan